

V&V Reference Report

L2 ASCDS Version : 7.6.7.2

Observation 5008 - L2 Version 001
Chandra X-Ray Center

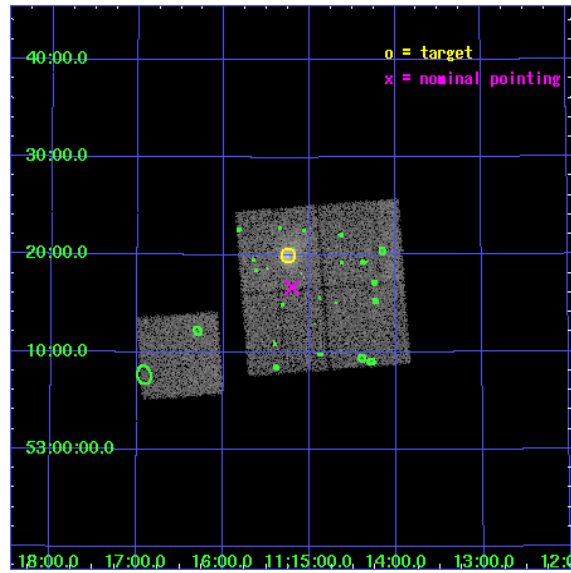
L2 Processing Date : May 23 2006

Contents

1	Front	2
2	OBI	3
2.1	OBI	3
2.1.1	Images	3
2.1.2	Bias	3
2.1.3	Parameters	4
2.1.4	Events	4
2.2	Compared Parameters	5
2.3	Aspect	6
2.4	Star Slots	9
2.4.1	Slot 3	9
2.4.2	Slot 4	10
2.4.3	Slot 5	11
2.4.4	Slot 6	12
2.4.5	Slot 7	13
2.5	FID Slots	14
2.5.1	Slot 0	14
2.5.2	Slot 1	15
2.5.3	Slot 2	16
3	Point Sources	17
A	Summary	18
A.1	Status	18
A.2	Comments	18

1 Front

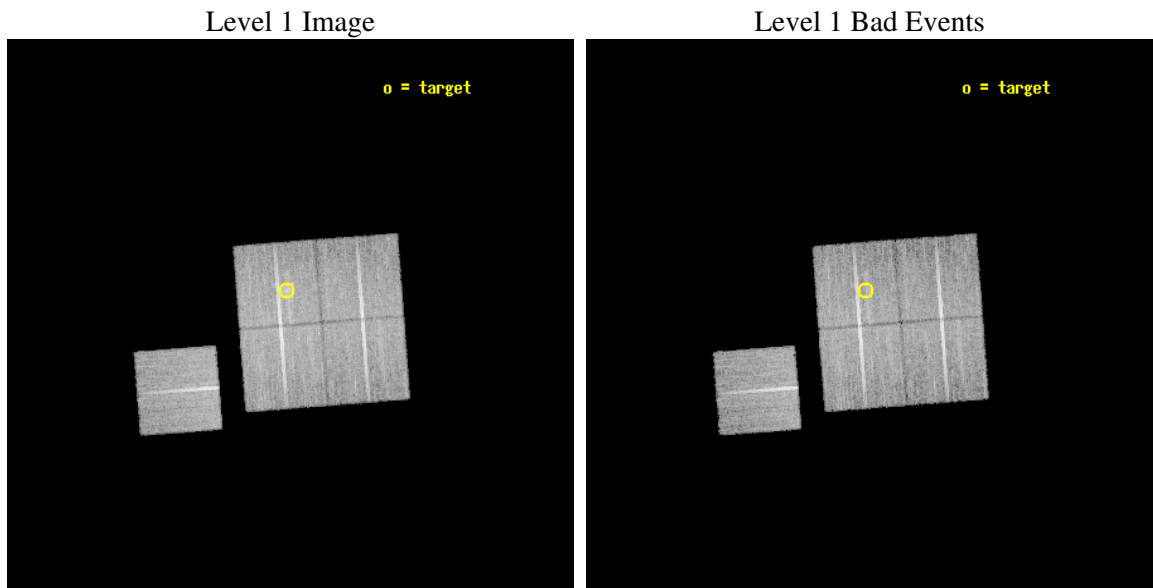
seq_num	800451
obs_id	5008
title	Cluster studies: Determination of H0/q0
observer	DR. LEON VANSPEYBROECK
object	MACS1115.2+5320
dtcycle	0
cycle	P
ra_targ	168.812083
dec_targ	53.331944
ra_nom	168.80180608769
dec_nom	53.278000257681
roll_nom	265.61259714158
revision	2
ontime	18221.759004712
livetime	17983.678308652
ontime0	18221.75902462
ontime1	18215.477074206
ontime2	18221.758994699
ontime3	18221.759004712
ontime6	18224.899964958
l2events	51744



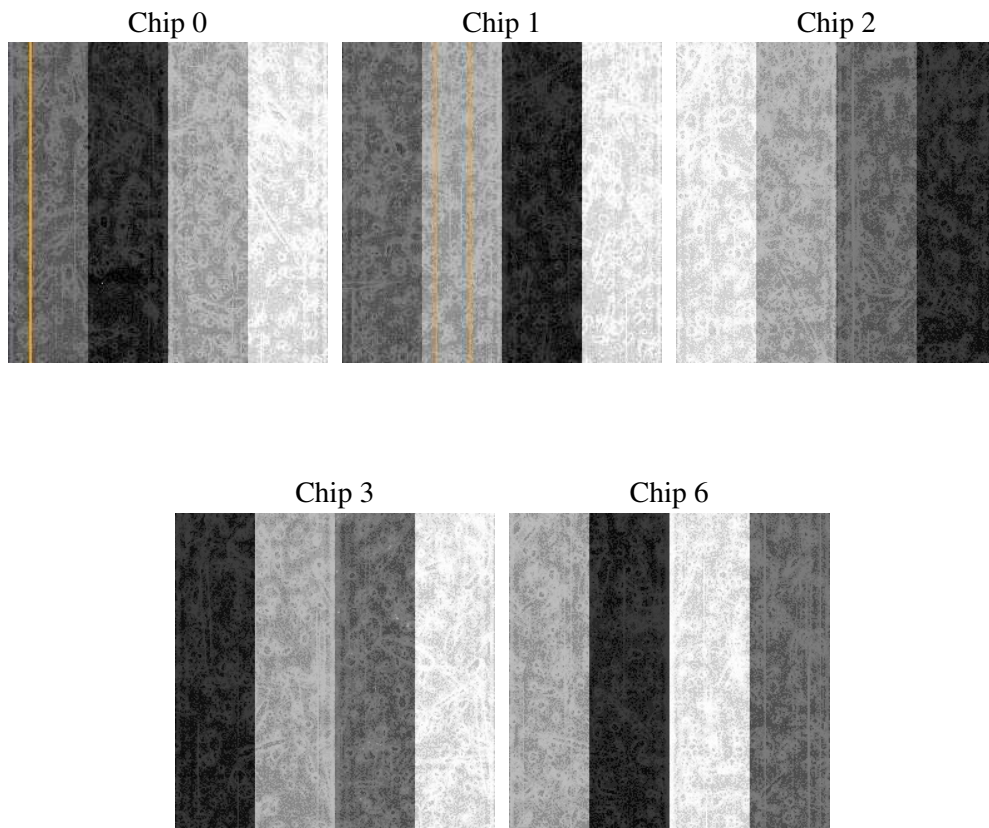
2 OBI

2.1 OBI

2.1.1 Images



2.1.2 Bias



2.1.3 Parameters

obi_num	0
ascdsver	7.6.7.2
caldbver	3.2.2
date	2006-05-23T17:19:09
revision	2

sched_exp_time	25000.000000
ontime	18632.426824927
ontime0	18632.426844835
ontime1	18626.144894421
ontime2	18632.426814914
ontime3	18632.426824927
ontime6	18635.567785174
l1events	564418

2.1.4 Events

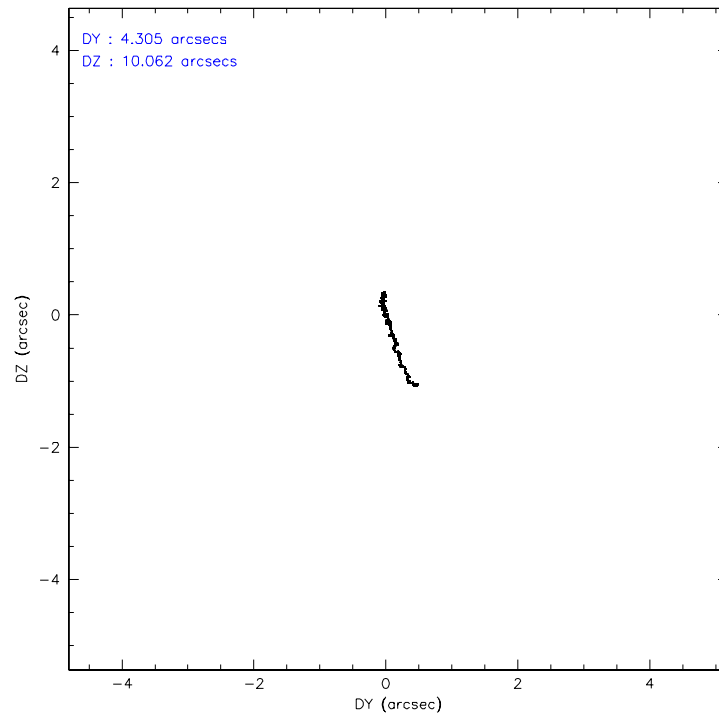
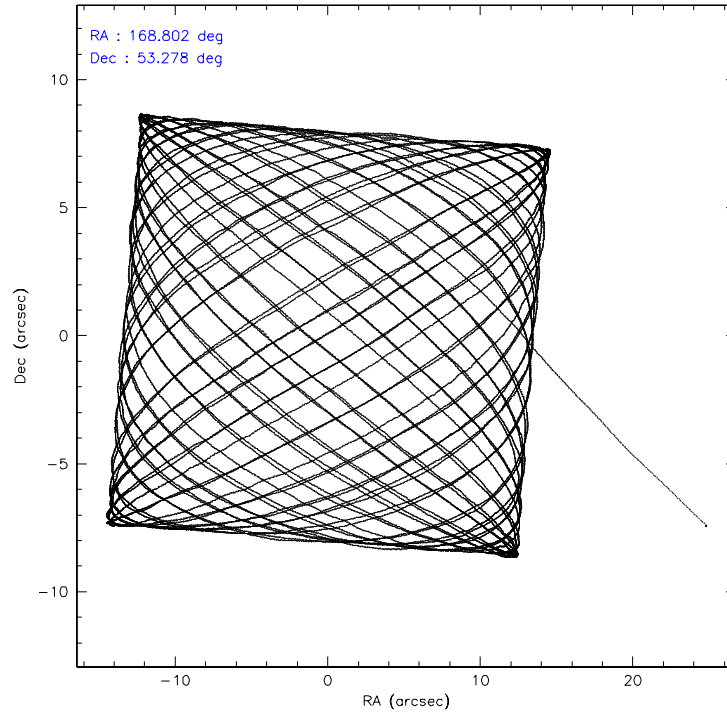
	ccd 0	ccd 1	ccd 2	ccd 3	ccd 6
level 1 events	108425	104449	120094	118555	112895
rejected events	97151	91853	109254	103371	101682
rejected %	89%	87%	90%	87%	90%

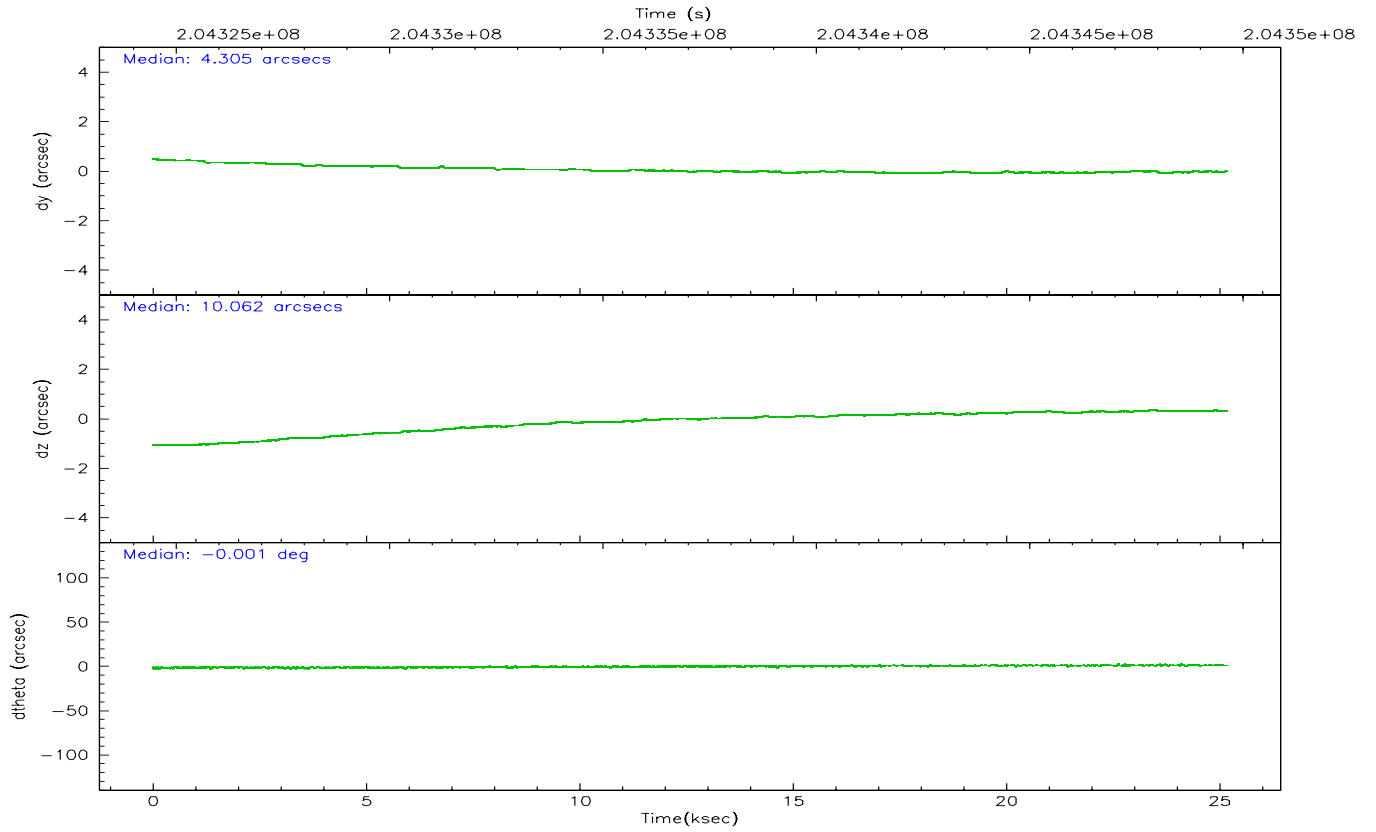
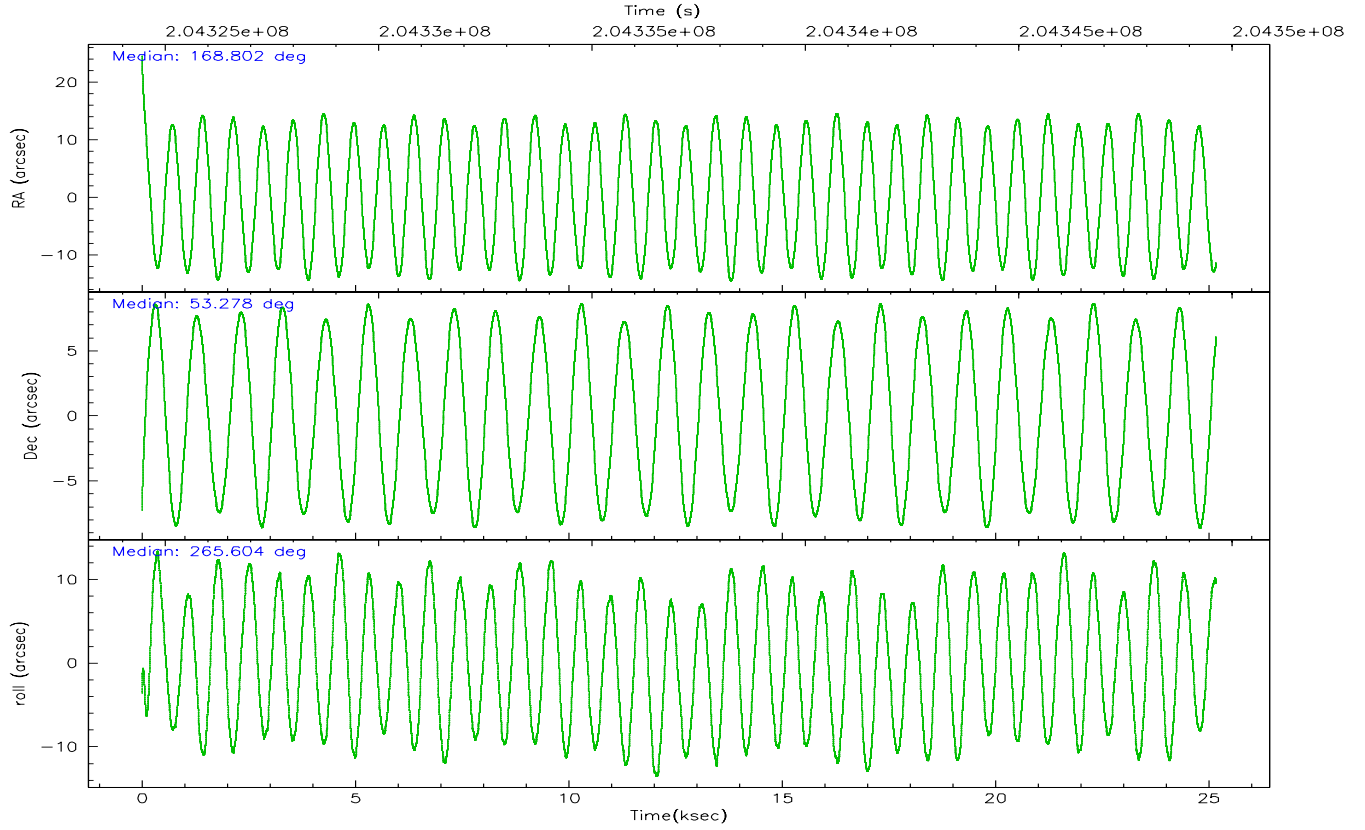
	ccd 0	ccd 1	ccd 2	ccd 3	ccd 6
grade 0 events	4085	4807	4203	7601	3940
	3%	4%	3%	6%	3%
grade 1 events	42	40	59	75	47
	0%	0%	0%	0%	0%
grade 2 events	2646	2783	2545	2749	2423
	2%	2%	2%	2%	2%
grade 3 events	1347	1397	1196	1363	1289
	1%	1%	0%	1%	1%
grade 4 events	1246	1379	1174	1368	1309
	1%	1%	0%	1%	1%
grade 5 events	3977	4292	3878	4665	4505
	3%	4%	3%	3%	3%
grade 6 events	2197	2522	1967	2330	2533
	2%	2%	1%	1%	2%
grade 7 events	92885	87229	105072	98404	96849
	85%	83%	87%	83%	85%

2.2 Compared Parameters

Parameter	Planned	Actual	Parameter	Planned	Actual
Instrument	ACIS	ACIS	Obspar format version number	6	6
Detector	ACIS-01236	ACIS-01236	Obspar file type	PREDICTED	ACTUAL
Grating	NONE	NONE	Obspar update status	NONE	UPDATED
Data mode	VFAINT	VFAINT	On-chip summing requested	N	N
Observation mode	POINTING	POINTING	Subarray requested	NONE	NONE
Pointing RA	168.781834	168.8018060876936	Alternating exposures requested	N	N
Pointing Dec	53.302620	53.27800025768125	Primary exposure time	0.000000	3.1
Pointing Roll	265.419918	265.6125971415826			
SIM focus pos (mm)	-0.782348	-0.7809083437167272			
SIM defocus (mm)	0	0.001439871863259334			
SIM translation stage pos (mm)	-225.840463	-225.8433433320239			
SIM translation stage offset (mm)	-7.752	-7.749109670905796			
Observation start time	204324639.184000	204323445.79526			
Observation start date	2004-06-22T20:49:35	2004-06-22T20:30:45			
Observation end time	204349639.184000	204350263.38395			
Observation end date	2004-06-23T03:46:15	2004-06-23T03:57:43			
Read mode	TIMED	TIMED			

2.3 Aspect



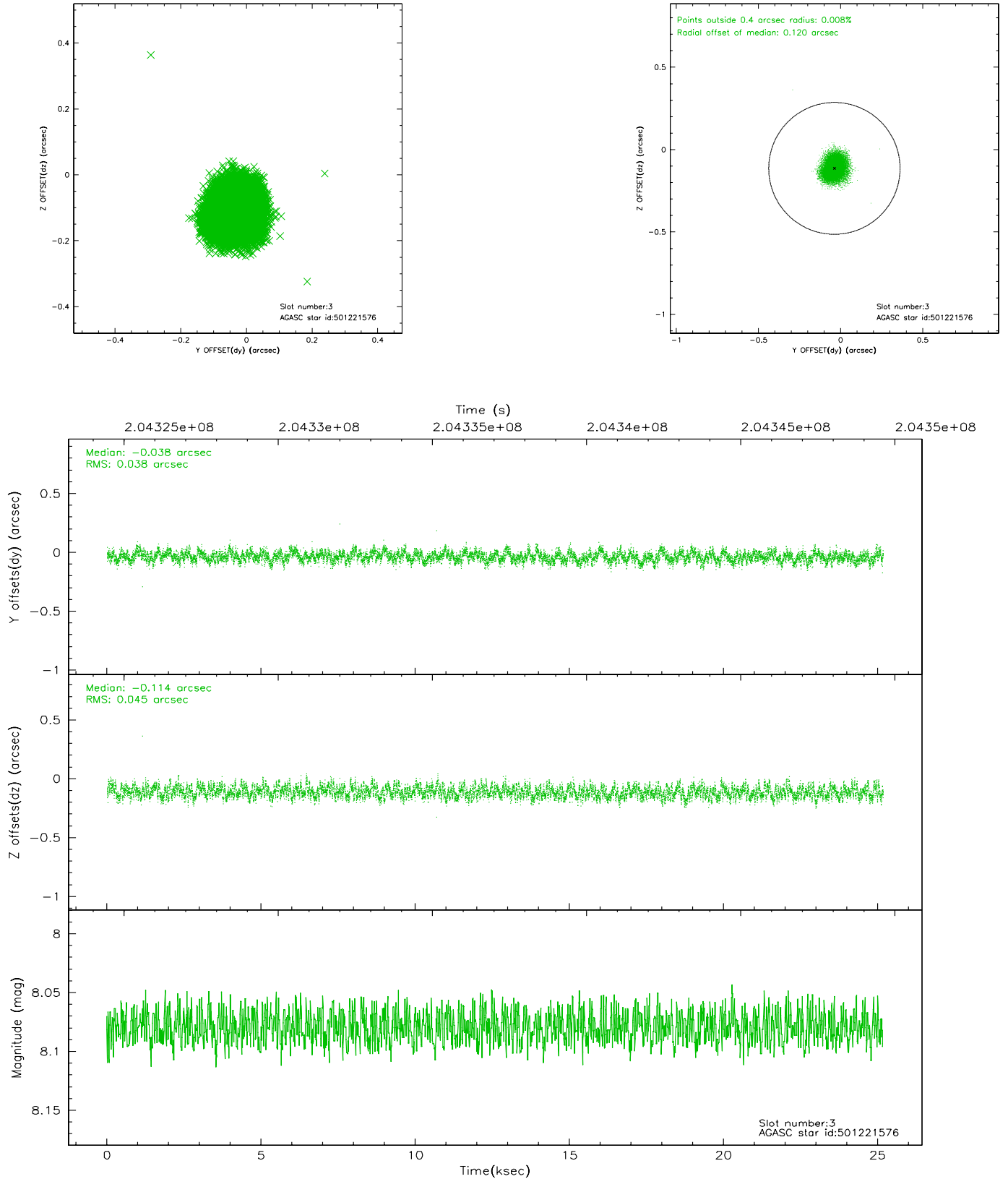


Slot Statistics

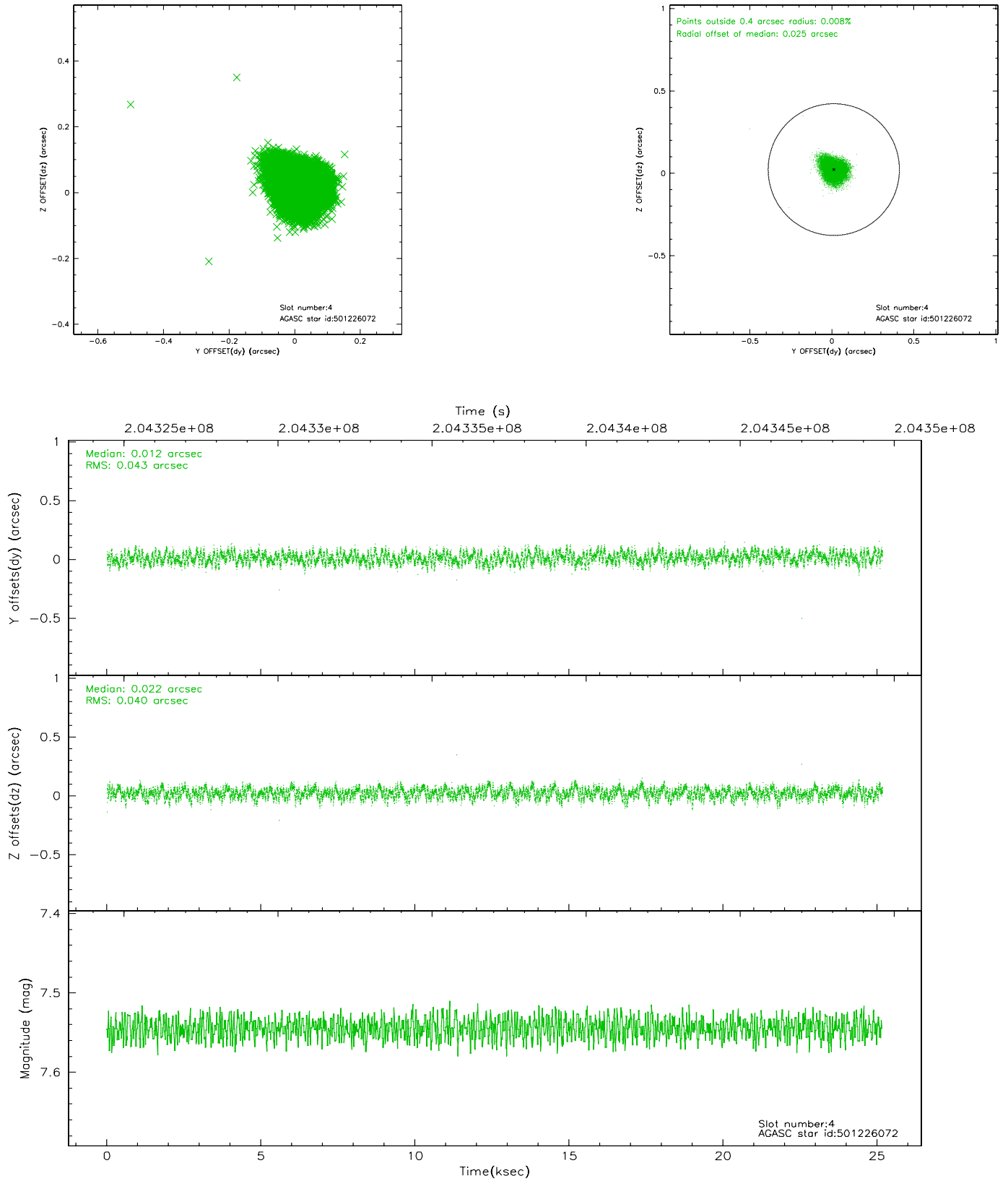
slot	status	id	mag	n_pts	med_dy	med_dz	dr1	dr2	ra	dec	mean_y	mean_z
0	FID	ACIS-I-1	7.22	6140	0.065	-0.046	0.019	0.028	0.000000	0.000000	935.29	-992.51
1	FID	ACIS-I-5	7.22	6142	-0.222	0.063	0.012	0.018	0.000000	0.000000	-1813.02	905.03
2	FID	ACIS-I-6	7.25	6142	0.061	0.056	0.011	0.016	0.000000	0.000000	400.73	1549.64
3	GUIDE	501221576	8.08	12284	-0.038	-0.114	0.064	0.099	168.270365	53.371526	-162.97	-1115.17
4	GUIDE	501226072	7.54	12283	0.012	0.022	0.063	0.097	168.396705	52.850484	1687.73	-704.65
5	GUIDE	501226240	7.42	12284	0.016	0.096	0.064	0.105	168.639140	52.946889	1301.66	-205.78
6	GUIDE	501357376	9.35	12276	0.018	0.033	0.115	0.185	169.850008	53.661633	-1487.22	2166.60
7	GUIDE	501219480	8.88	12277	-0.004	-0.034	0.076	0.123	167.857770	52.792383	1979.32	-1859.05

2.4 Star Slots

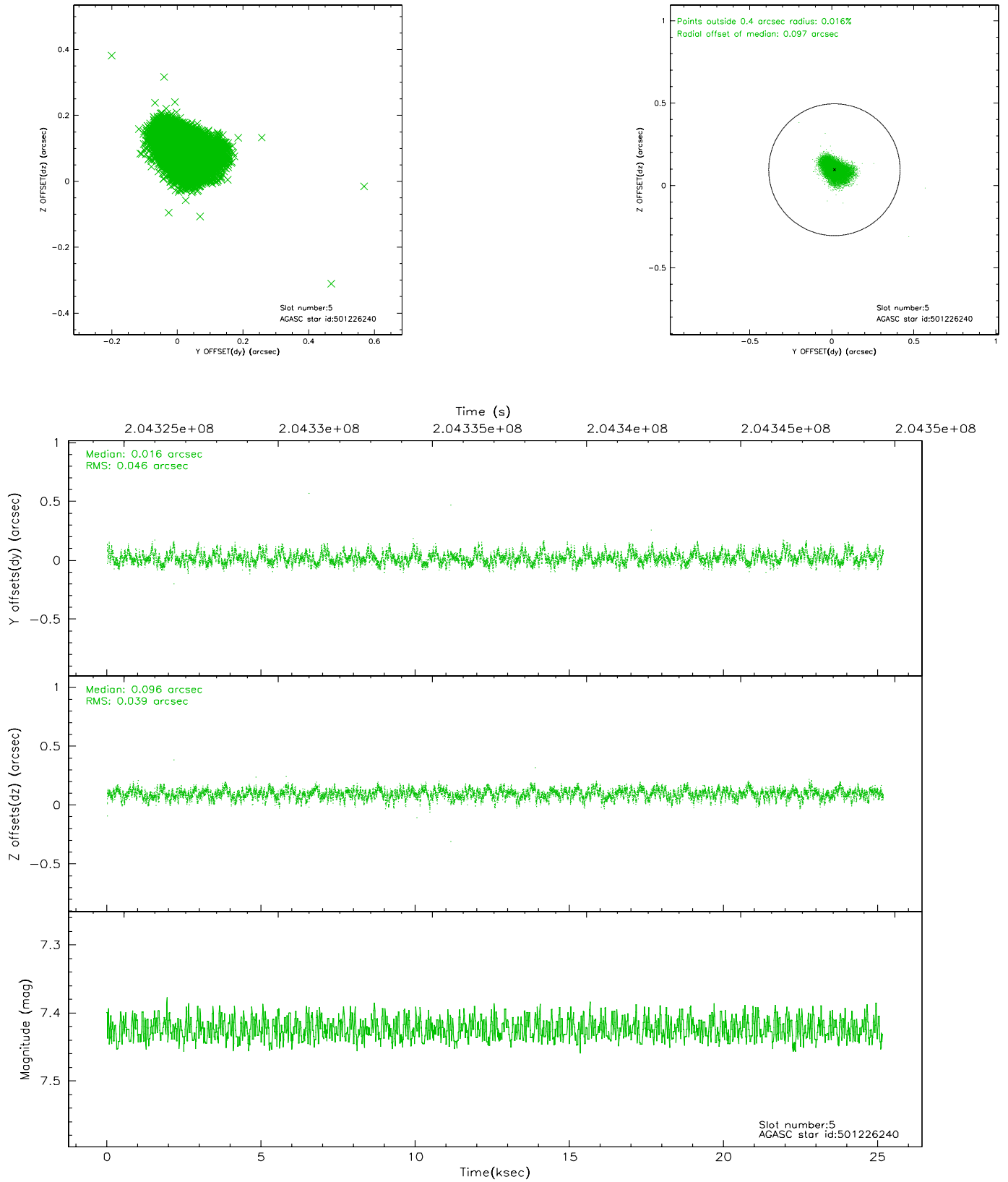
2.4.1 Slot 3



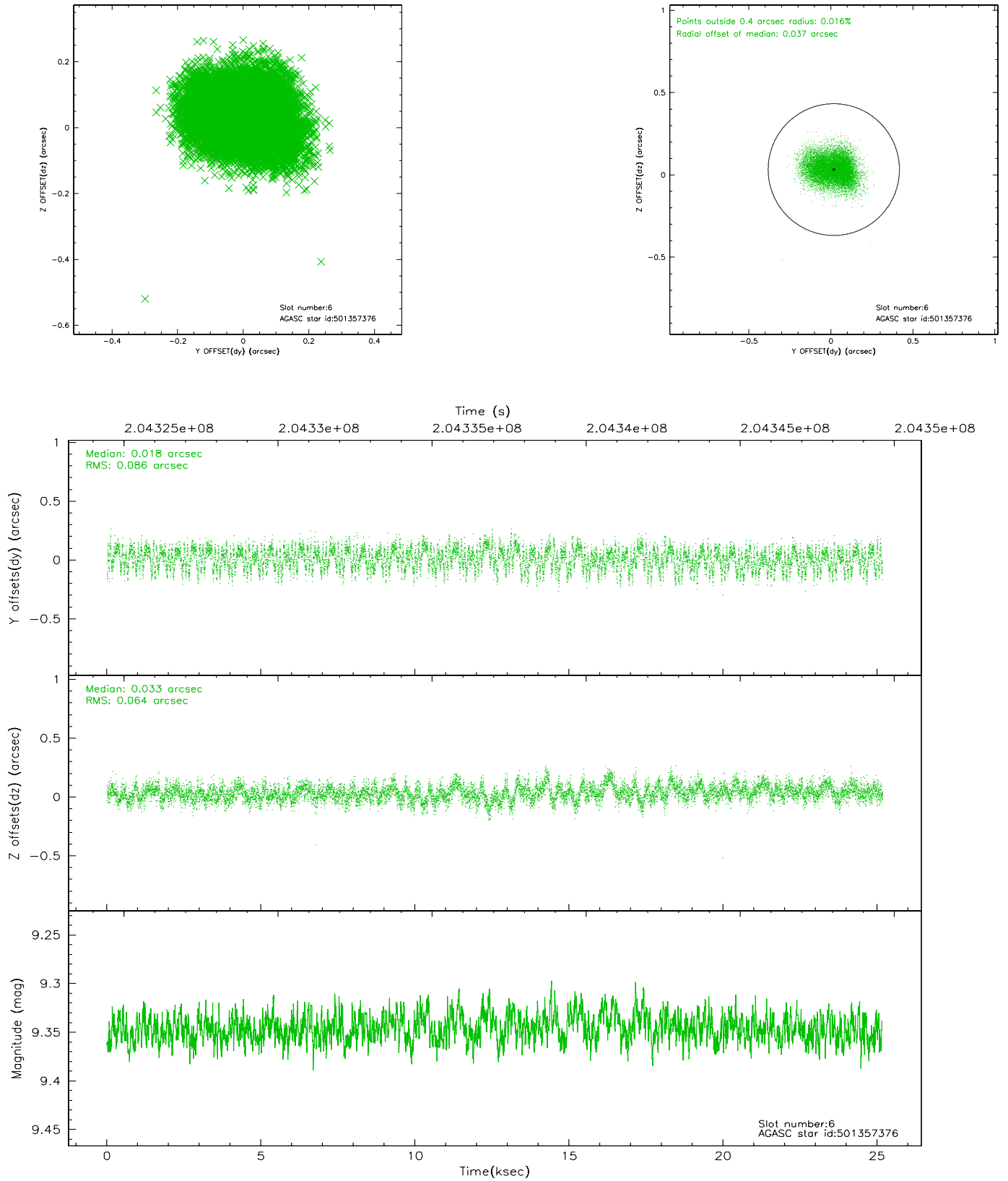
2.4.2 Slot 4



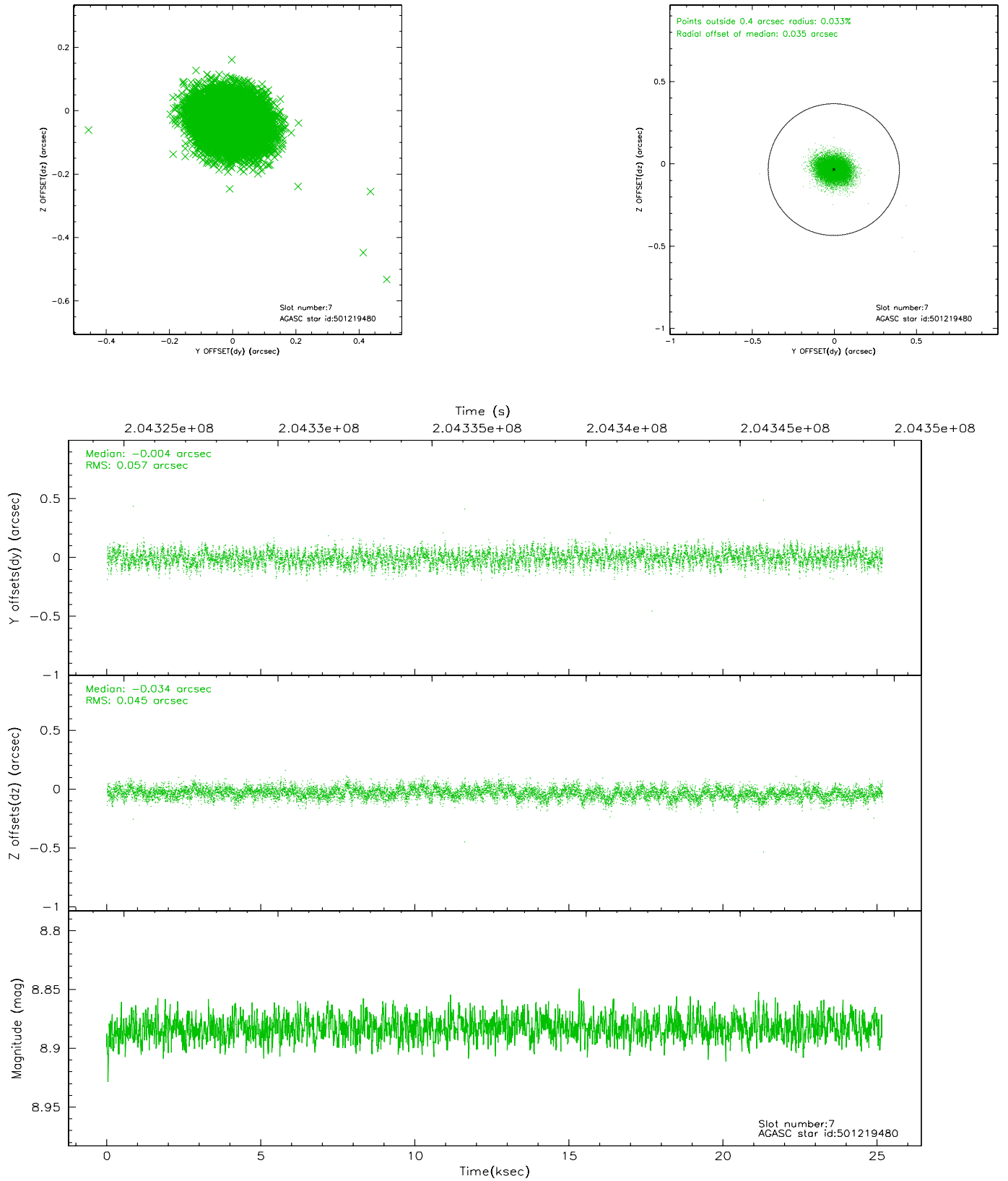
2.4.3 Slot 5



2.4.4 Slot 6

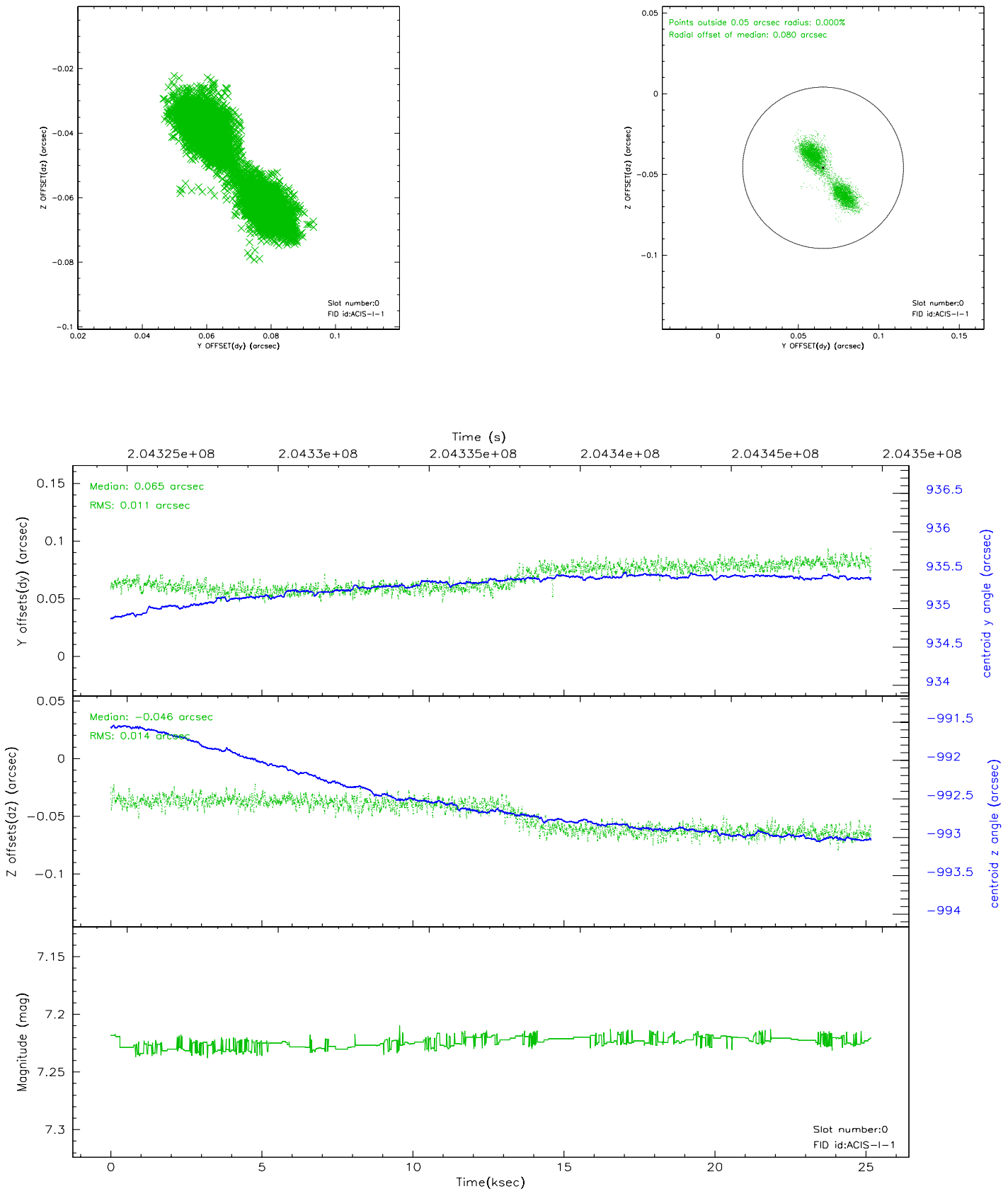


2.4.5 Slot 7

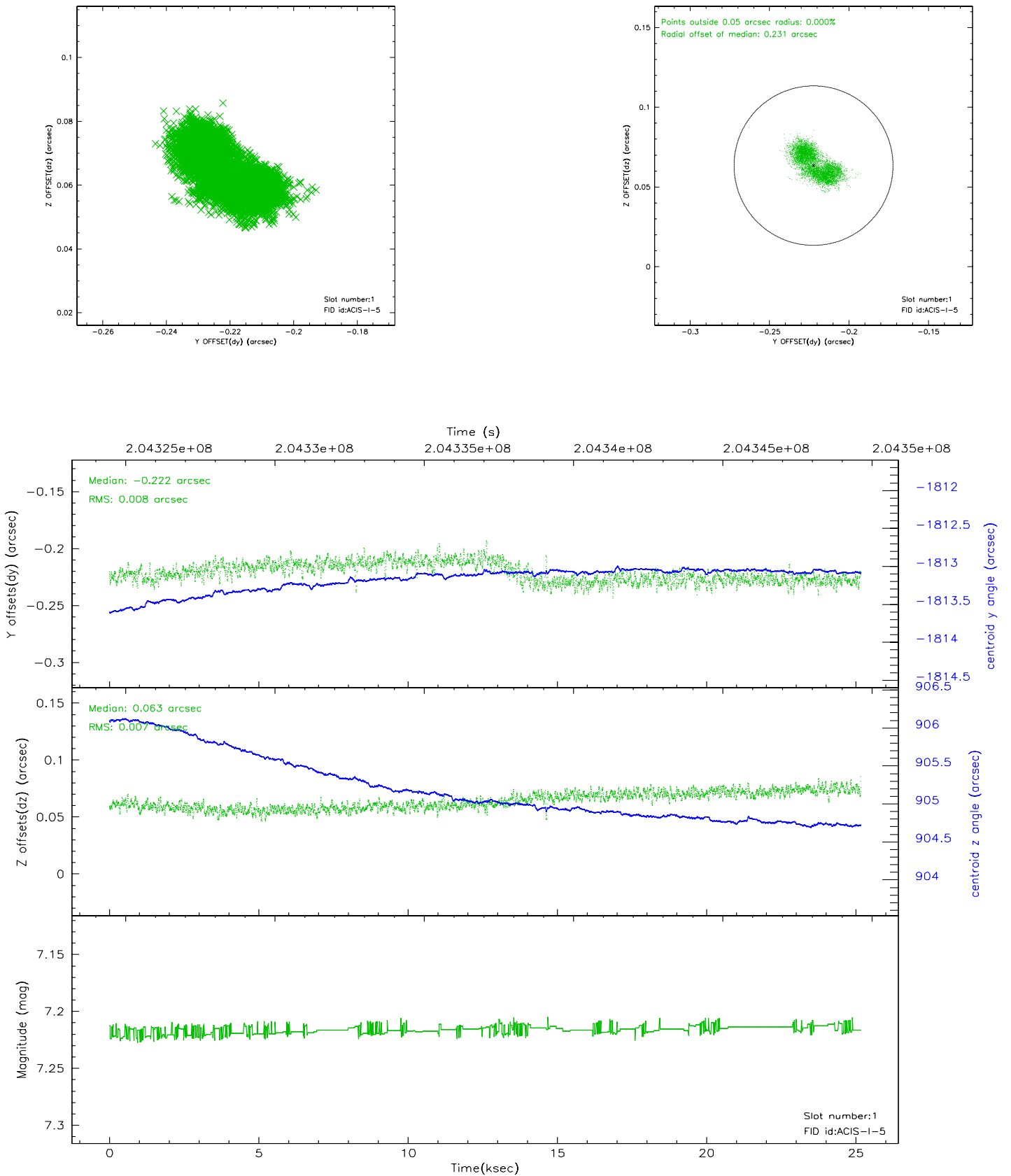


2.5 FID Slots

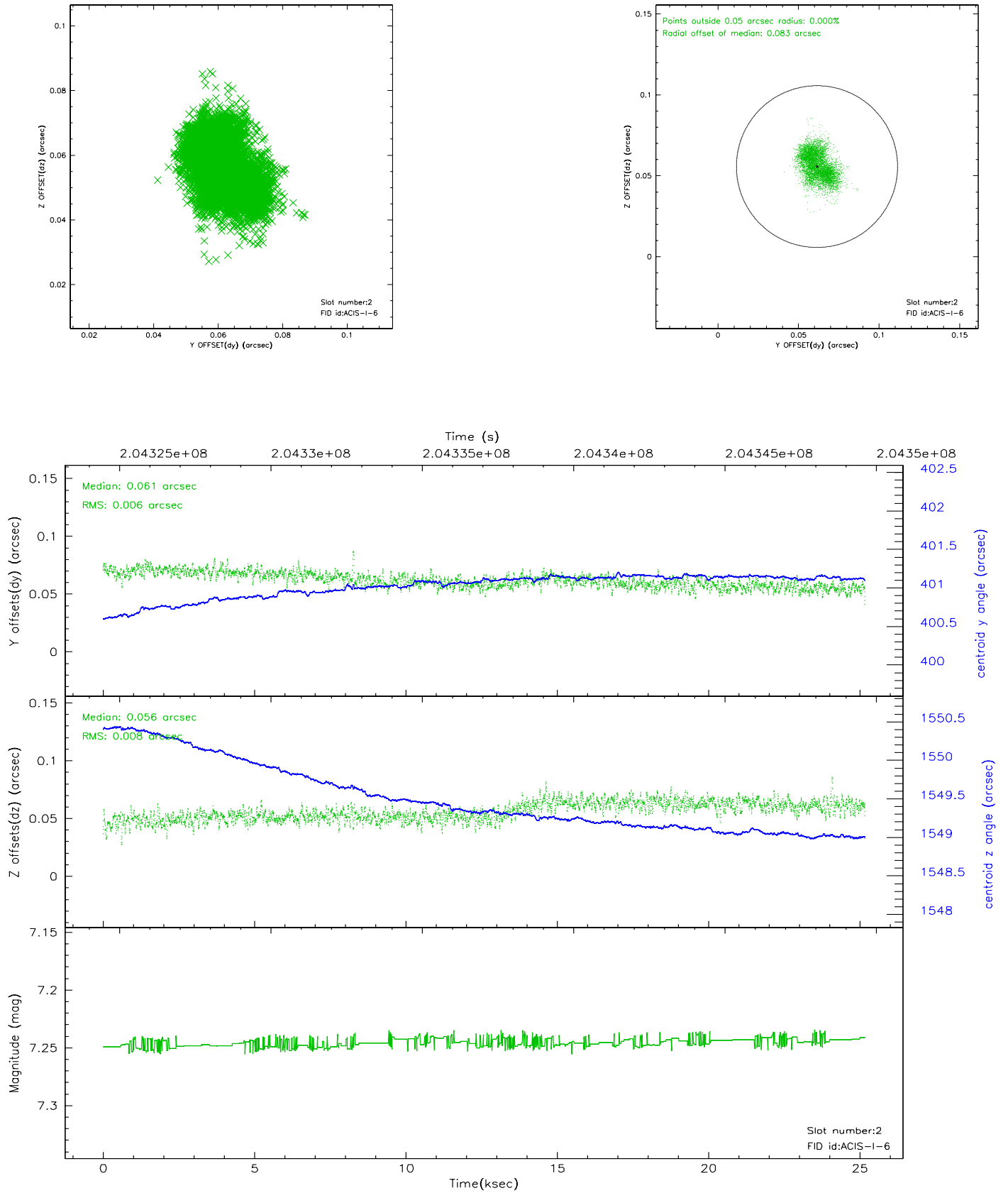
2.5.1 Slot 0



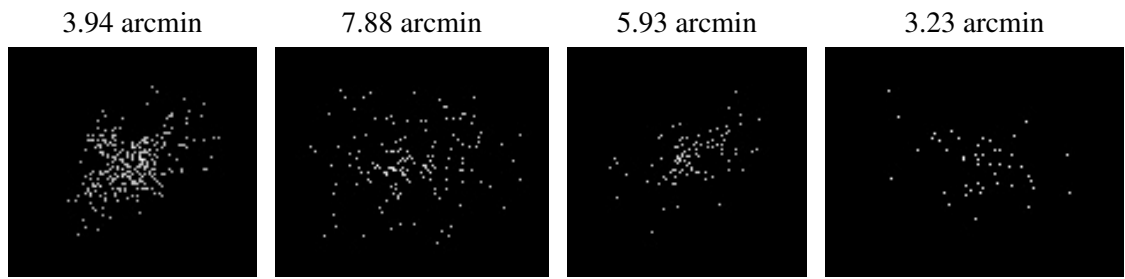
2.5.2 Slot 1



2.5.3 Slot 2



3 Point Sources



A Summary

A.1 Status

V&V Scientist	Beth Sundheim
V&V Date (YYYY-MM-DD)	2006.05.23
V&V Edition	1
V&V Disposition and Status	OK
V&V Charge Time	18.221

A.2 Comments