

V&V Reference Report

L2 ASCDS Version : 8.5.1.1

Observation 5000 - L2 Version 4
Chandra X-Ray Center

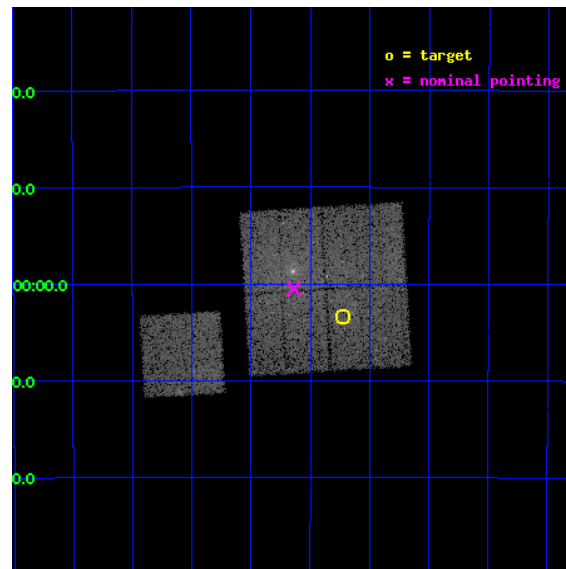
L2 Processing Date : Mar 28 2013

Contents

1	Front	2
2	OBI	3
2.1	OBI	3
2.1.1	Images	3
2.1.2	Bias	3
2.1.3	Parameters	4
2.1.4	Events	4
2.2	Compared Parameters	5
2.3	Aspect	6
2.4	Star Slots	9
2.4.1	Slot 3	9
2.4.2	Slot 4	10
2.4.3	Slot 5	11
2.4.4	Slot 6	12
2.4.5	Slot 7	13
2.5	FID Slots	14
2.5.1	Slot 0	14
2.5.2	Slot 1	15
2.5.3	Slot 2	16
A	Summary	17
A.1	Status	17
A.2	Comments	17

1 Front

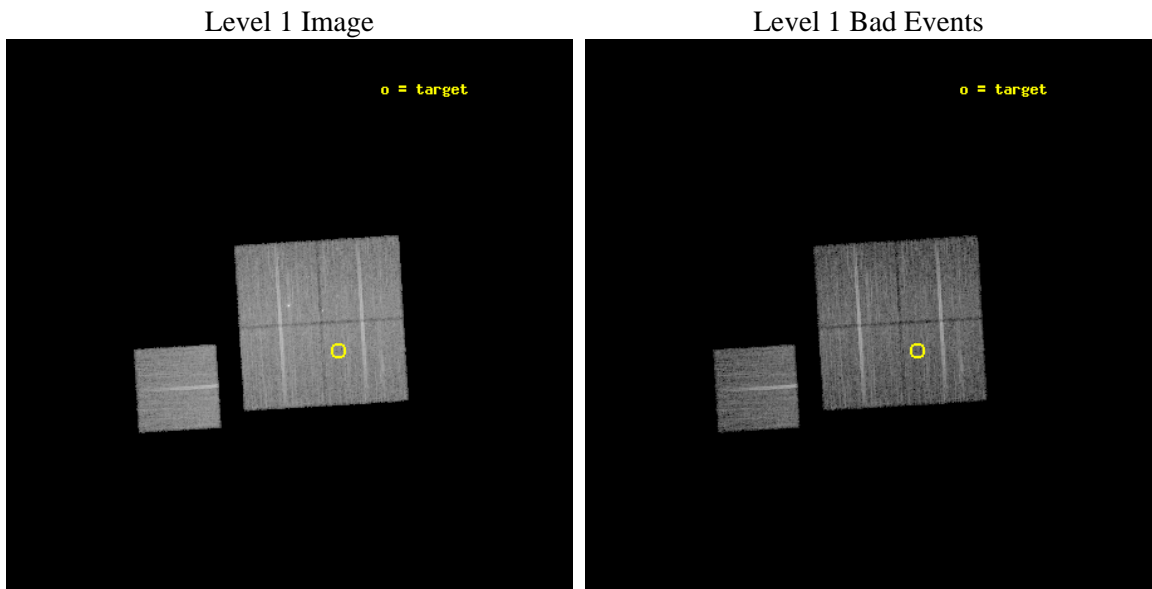
seq_num	800443	Sequence number
obs_id	5000	Observation id
title	Study of Candidate 'Fossil Groups	Proposal title
observer	Dr Stephen Murray	Principal investigator
object	NGC5419-offset2	Source name
dtcycle	0	
cycle	P	events from which exps? Prim/Second/Both
ra_targ	210.807083	Observer's specified target RA [deg]
dec_targ	-34.057111	Observer's specified target Dec [deg]
ra_nom	210.9095380947	Nominal RA [deg]
dec_nom	-34.008528393652	Nominal Dec [deg]
roll_nom	266.51040732142	Nominal Roll [deg]
revision	4	Processing version of data
ontime	15009.648022056	Sum of GTIs [s]
livetime	14813.535920705	Livetime [s]
ontime0	15009.648022056	Sum of GTIs [s]
ontime1	15009.689062059	Sum of GTIs [s]
ontime2	15003.448061943	Sum of GTIs [s]
ontime3	15006.630151808	Sum of GTIs [s]
ontime6	15003.325001657	Sum of GTIs [s]
l2events	57494	Number of level 2 events



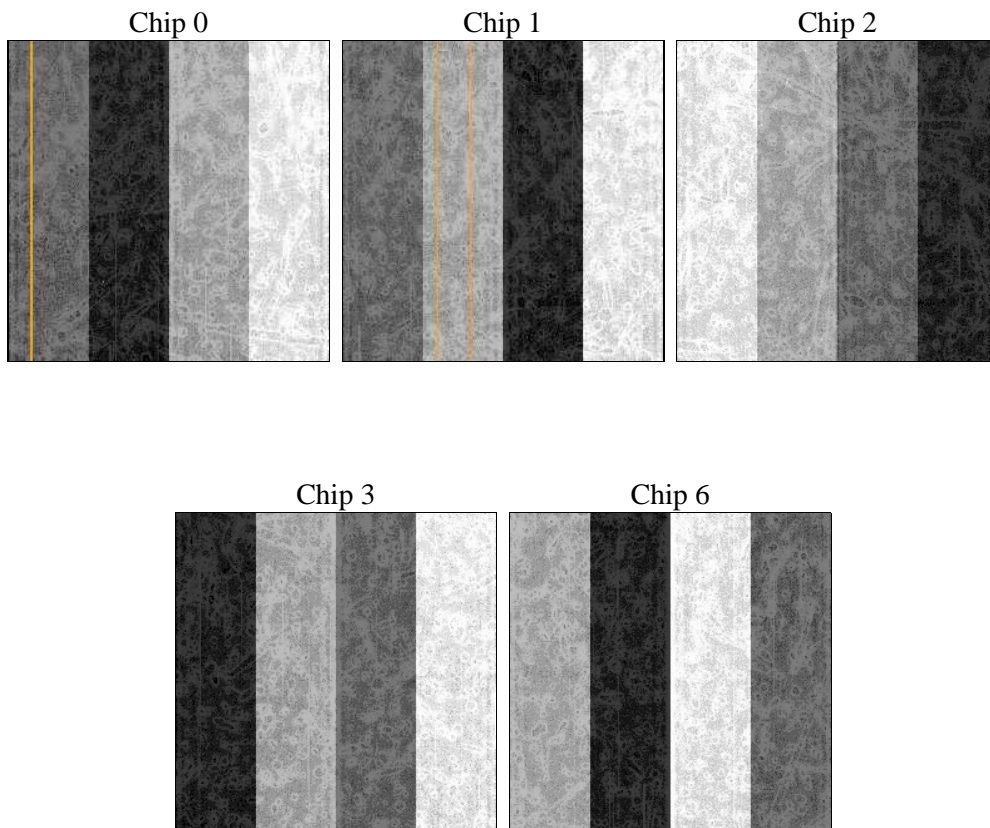
2 OBI

2.1 OBI

2.1.1 Images



2.1.2 Bias



2.1.3 Parameters

obi_num	0	Obi number	sched_exp_time	15231.482000	[s] Scheduled observation exposure time
ascdsver	8.5.1.1	Processing system revision	ontime	15009.648022056	Sum of GTIs [s]
caldbver	4.5.6	 	ontime0	15009.648022056	Sum of GTIs [s]
date	2013-03-28T16:43:40	Date and time of file creation	ontime1	15009.689062059	Sum of GTIs [s]
revision	4	Processing version of data	ontime2	15003.448061943	Sum of GTIs [s]
			ontime3	15006.630151808	Sum of GTIs [s]
			ontime6	15003.325001657	Sum of GTIs [s]
			l1events	479002	Number of level 1 events

2.1.4 Events

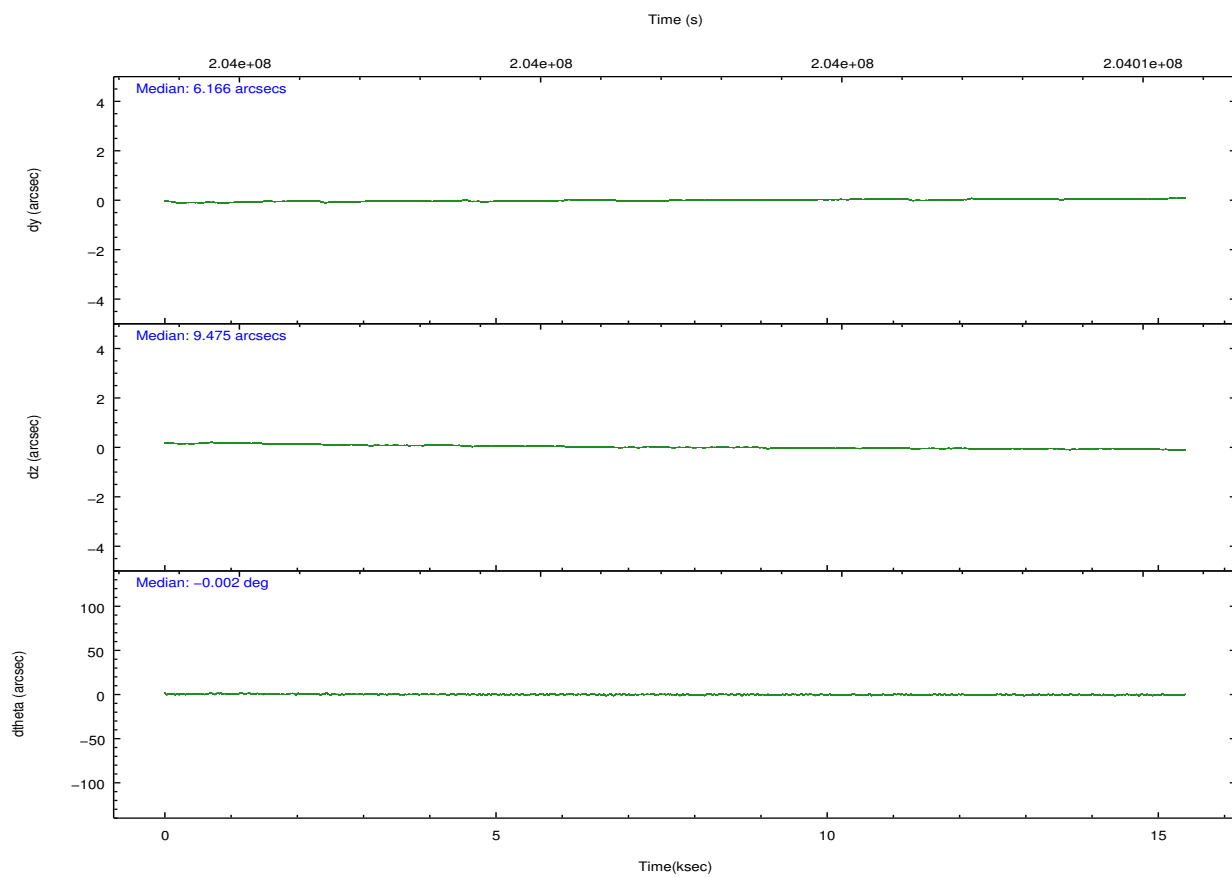
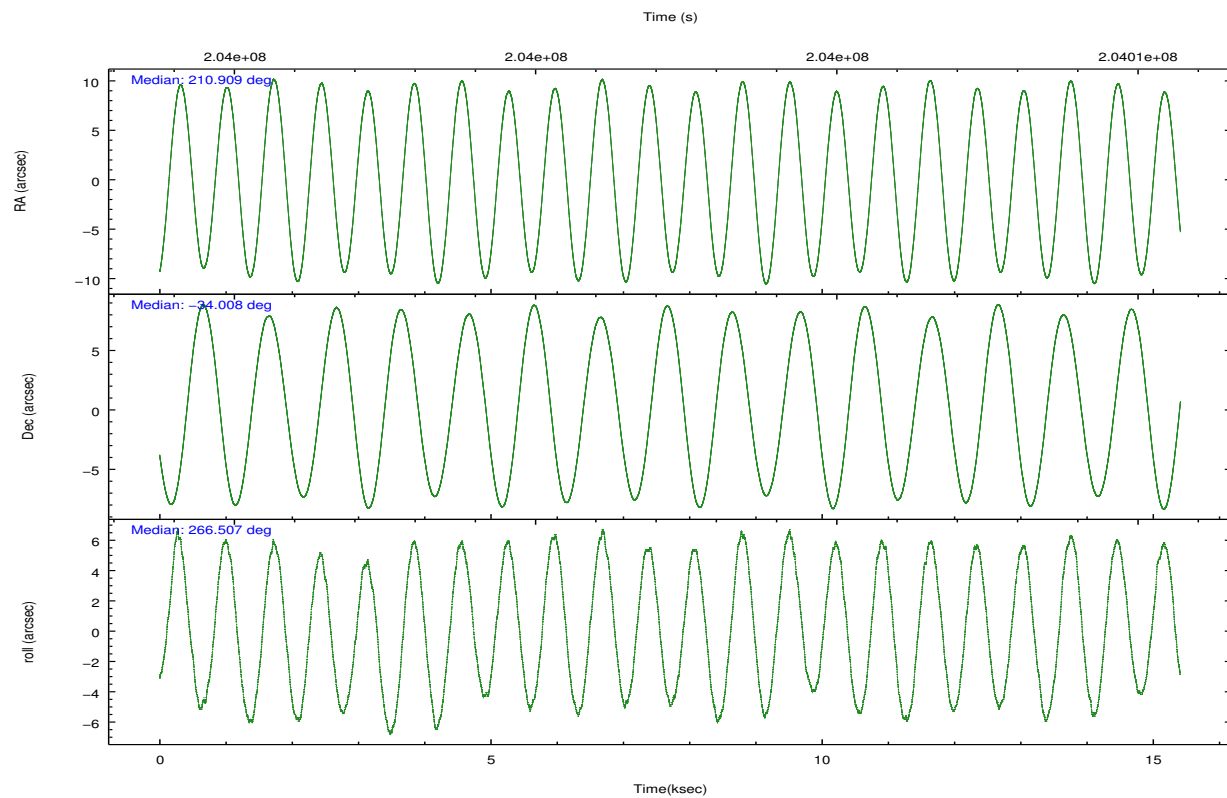
	ccd 0	ccd 1	ccd 2	ccd 3	ccd 6
level 1 events	92641	91869	99397	100583	94512
rejected events	80198	78131	86726	84006	83289
rejected %	86%	85%	87%	83%	88%

	ccd 0	ccd 1	ccd 2	ccd 3	ccd 6
grade 0 events	5876	6698	6459	9693	4845
	6%	7%	6%	9%	5%
grade 1 events	57	53	64	133	47
	0%	0%	0%	0%	0%
grade 2 events	2399	2542	2401	2566	2154
	2%	2%	2%	2%	2%
grade 3 events	1227	1234	1049	1230	1070
	1%	1%	1%	1%	1%
grade 4 events	1063	1229	1066	1216	1101
	1%	1%	1%	1%	1%
grade 5 events	3298	3346	2993	3693	3571
	3%	3%	3%	3%	3%
grade 6 events	1883	2038	1700	1879	2056
	2%	2%	1%	1%	2%
grade 7 events	76838	74729	83665	80173	79668
	82%	81%	84%	79%	84%

2.2 Compared Parameters

Parameter	Planned	Actual	Parameter	Planned	Actual
Instrument	ACIS	ACIS	Obspar format version number	7	7
Detector	ACIS-01236	ACIS-01236	Obspar file type	PREDICTED	ACTUAL
Grating	NONE	NONE	Obspar update status	NONE	UPDATED
Data mode	VFAINT	VFAINT	Number of optional ACIS chips dropped	0	0
Observation mode	POINTING	POINTING	On-chip summing requested	N	N
[deg] Pointing RA	210.894642	210.9095380946951	Subarray requested	NONE	NONE
[deg] Pointing Dec	-33.984011	-34.00852839365153	Alternating exposures requested	N	N
[deg] Pointing Roll	266.293392	266.5104073214221	[s] Primary exposure time	0.000000	3.1
[mm] SIM focus pos	-0.782348	-0.7809083437167272			
[mm] SIM defocus	0	0.001439871863259334			
[mm] SIM translation stage pos	-225.592463	-225.5843688559632			
[mm] SIM translation stage offset	-8	-8.008084146966468			
[s] Observation start time (MET)	203994706.184000	203994330.06819			
Observation start date	2004-06-19T01:10:42	2004-06-19T01:05:30			
[s] Observation end time (MET)	204009937.184000	204010162.73139			
Observation end date	2004-06-19T05:24:33	2004-06-19T05:29:22			
Read mode	TIMED	TIMED			

2.3 Aspect

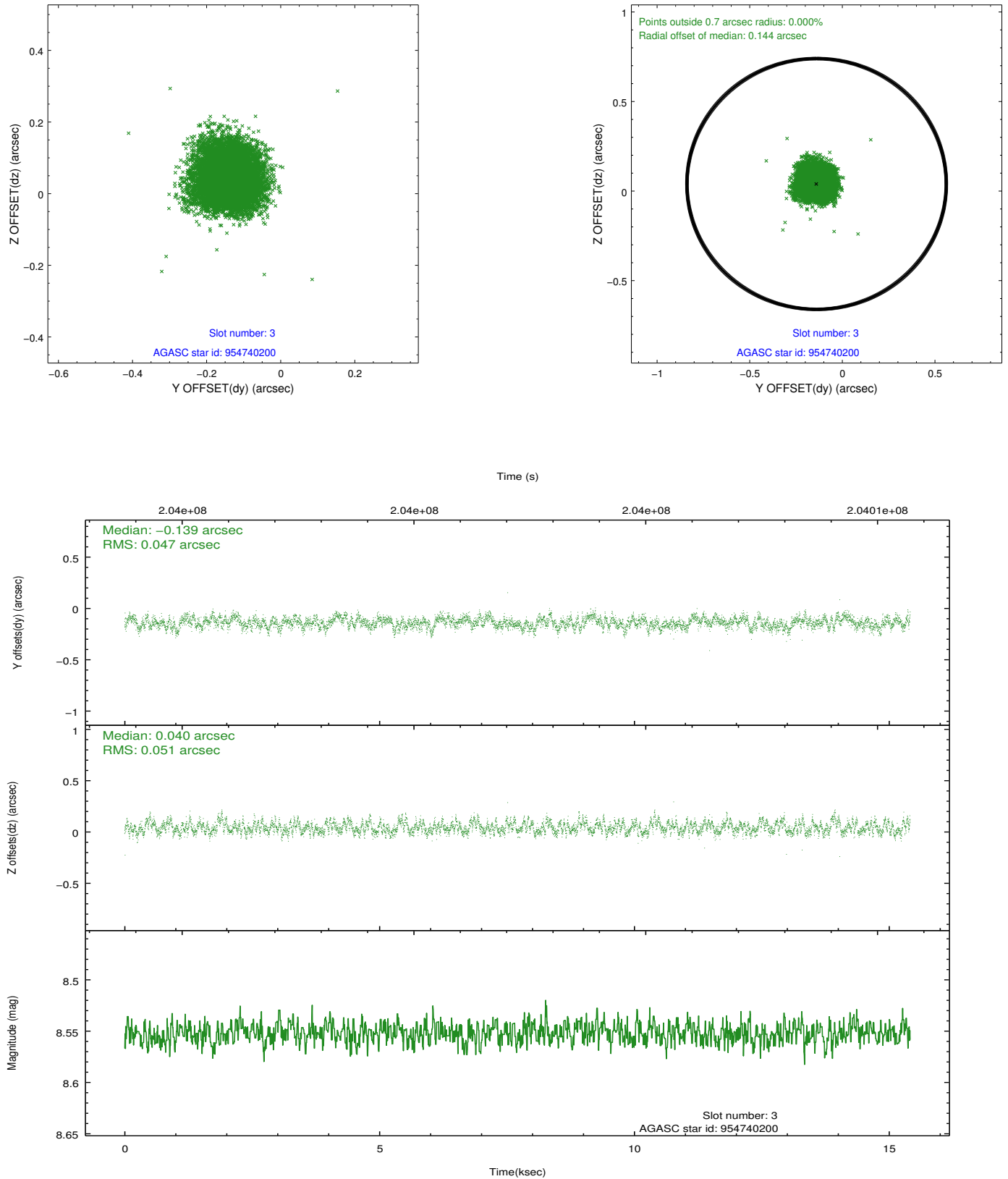


Slot Statistics

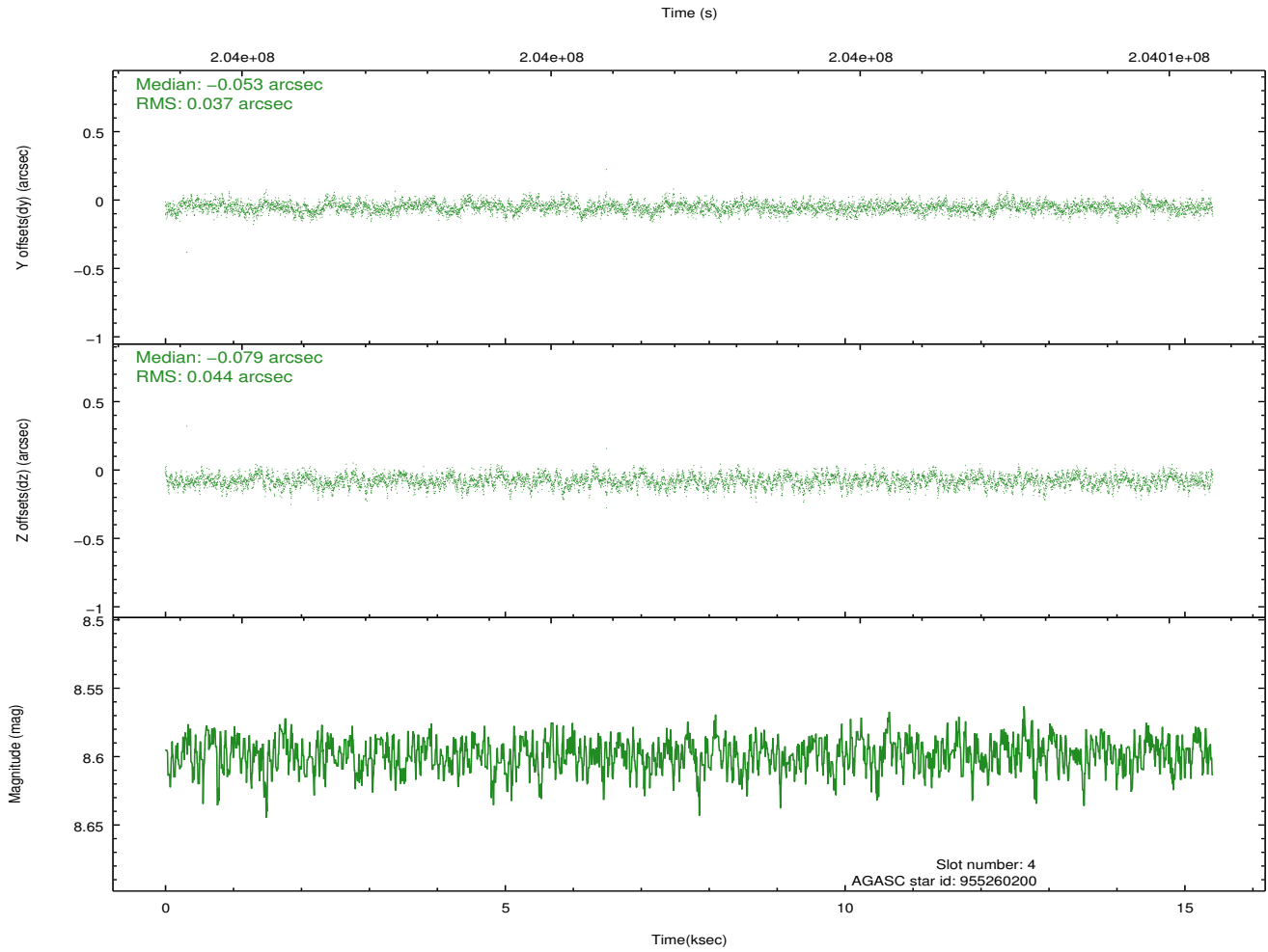
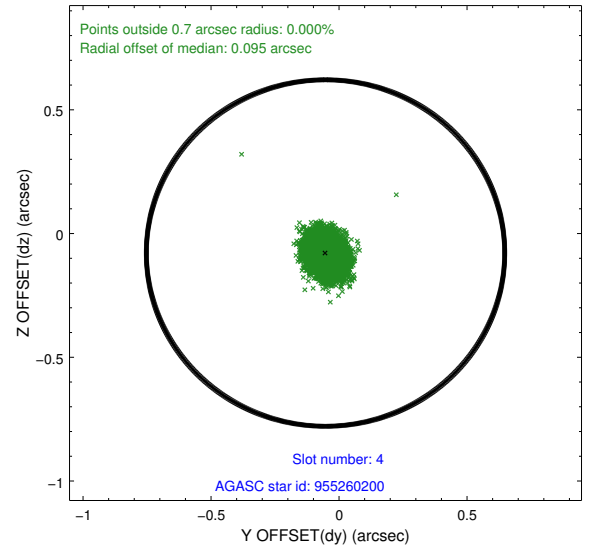
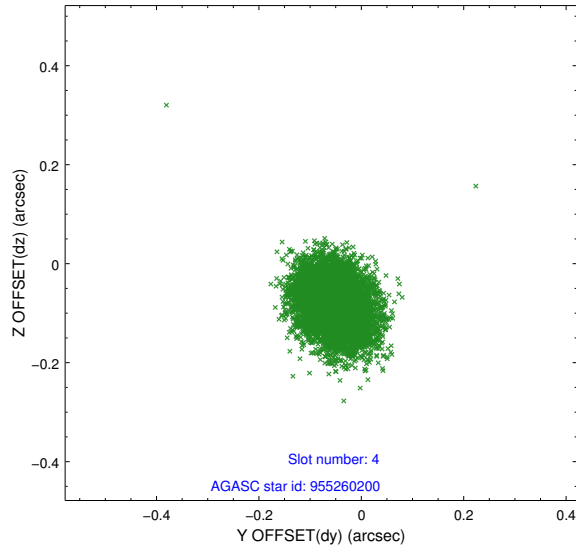
slot	status	id	mag	n_pts	med_dy	med_dz	dr1	dr2	ra	dec	mean_y	mean_z
0	FID	ACIS-I-1	7.23	3760	0.095	-0.082	0.006	0.011	0.000000	0.000000	933.50	-997.43
1	FID	ACIS-I-5	7.22	3760	-0.225	0.086	0.006	0.011	0.000000	0.000000	-1814.78	900.03
2	FID	ACIS-I-6	7.25	3760	0.038	0.066	0.007	0.011	0.000000	0.000000	398.66	1544.85
3	GUIDE	954740200	8.55	7517	-0.139	0.040	0.074	0.116	210.828569	-33.446121	-1919.08	-323.76
4	GUIDE	955260200	8.60	7519	-0.053	-0.079	0.061	0.099	210.218841	-34.127979	654.04	-1975.79
5	GUIDE	955261632	7.93	7519	0.185	0.122	0.058	0.092	210.777259	-34.540798	2023.43	-217.52
6	GUIDE	955263032	8.67	7516	0.130	-0.094	0.057	0.092	211.177099	-34.436586	1573.24	942.41
7	GUIDE	954861224	8.93	7518	-0.126	0.007	0.086	0.137	211.716360	-33.398119	-2254.70	2329.01

2.4 Star Slots

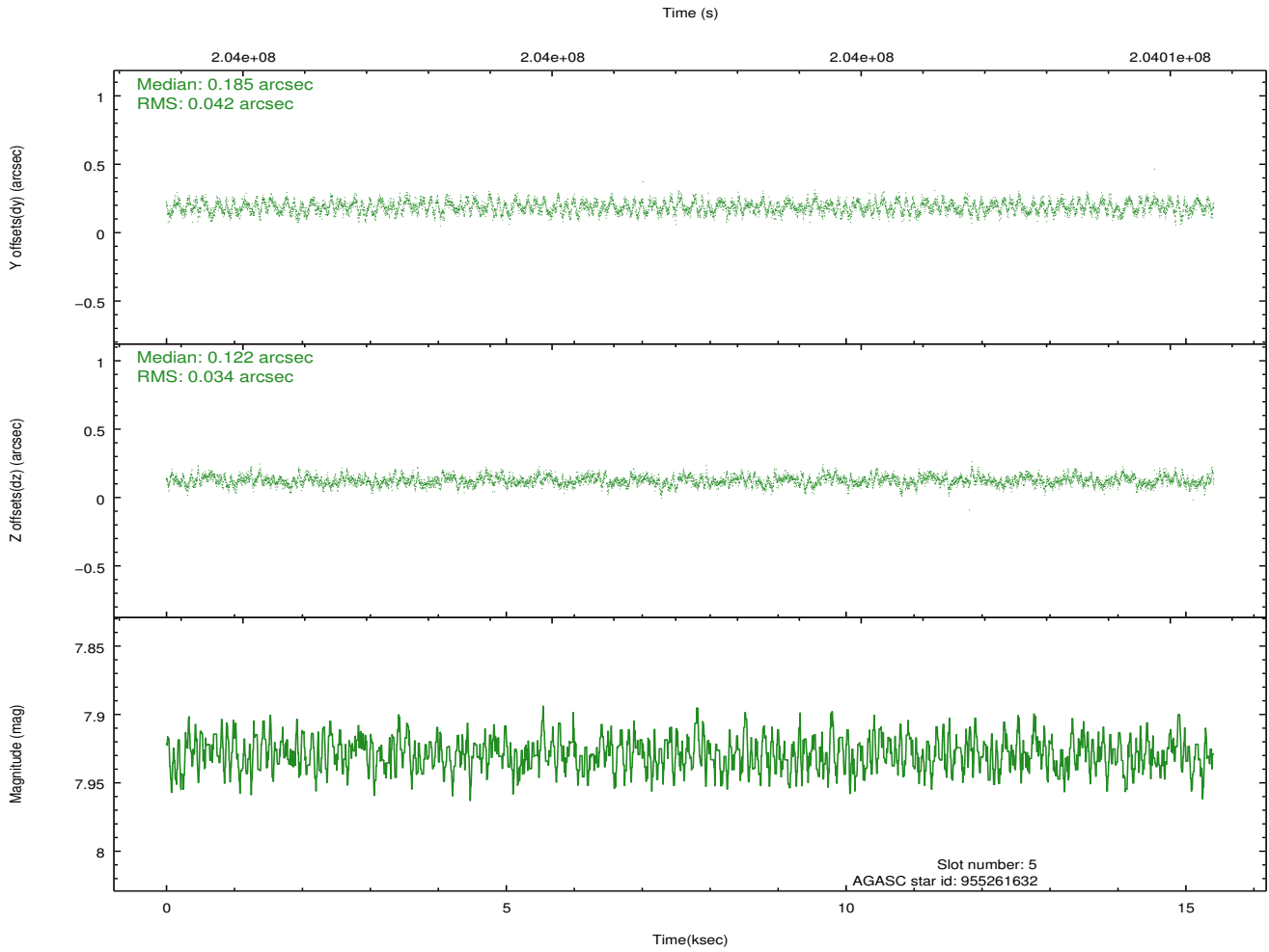
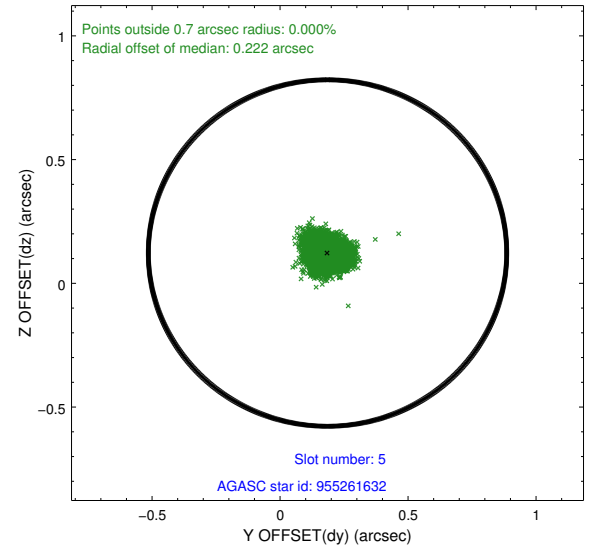
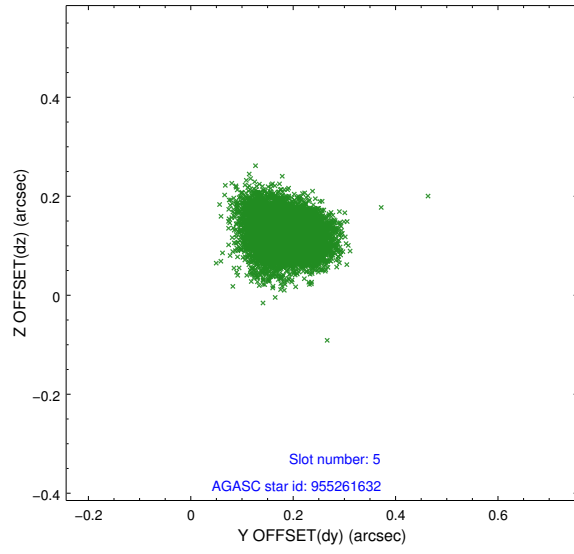
2.4.1 Slot 3



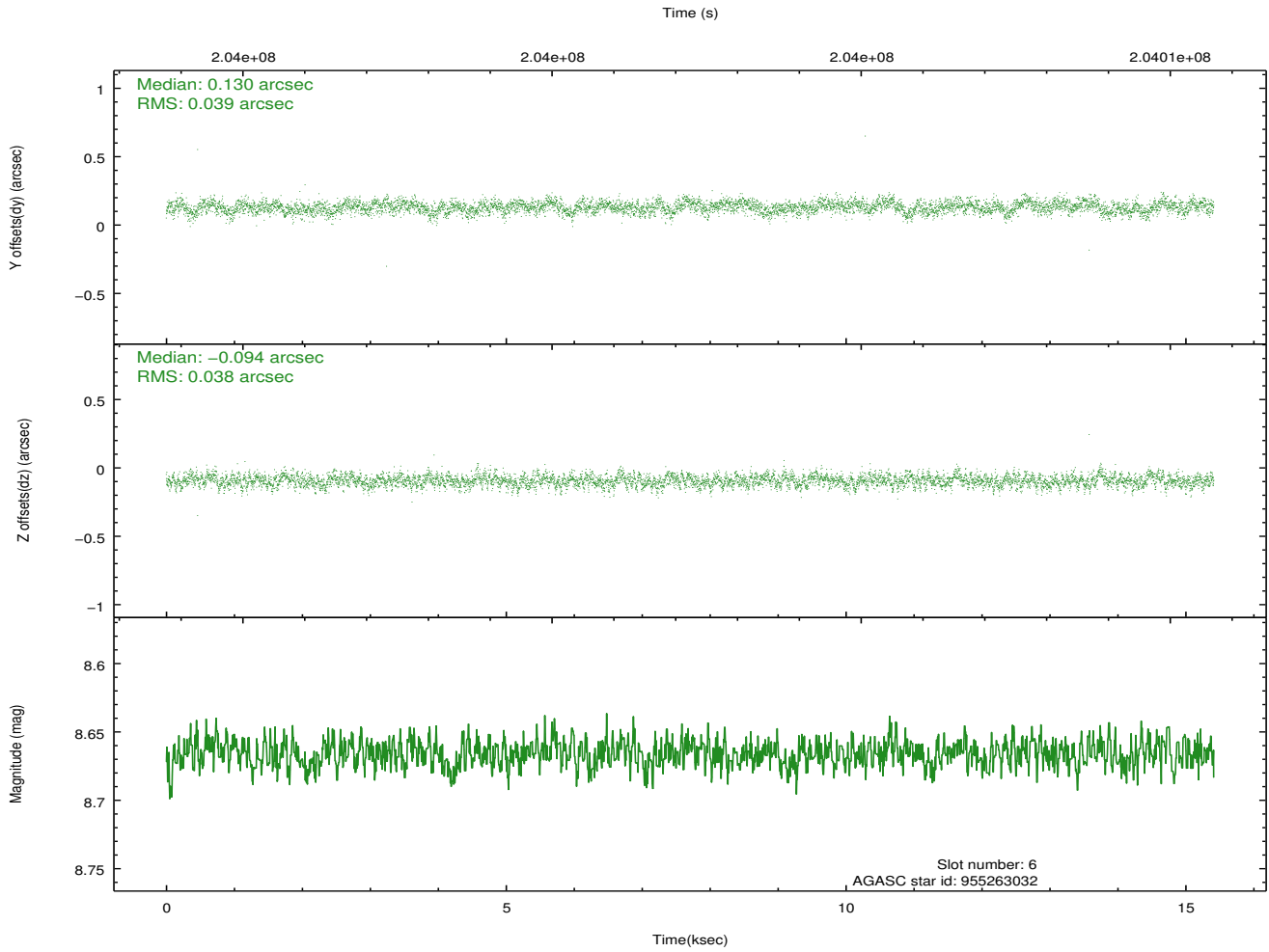
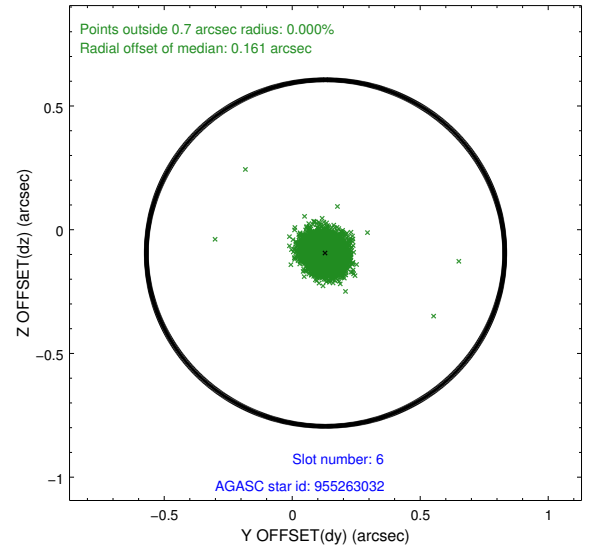
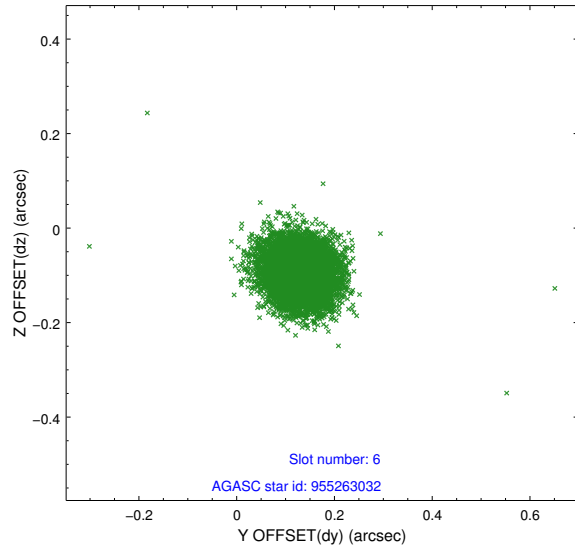
2.4.2 Slot 4



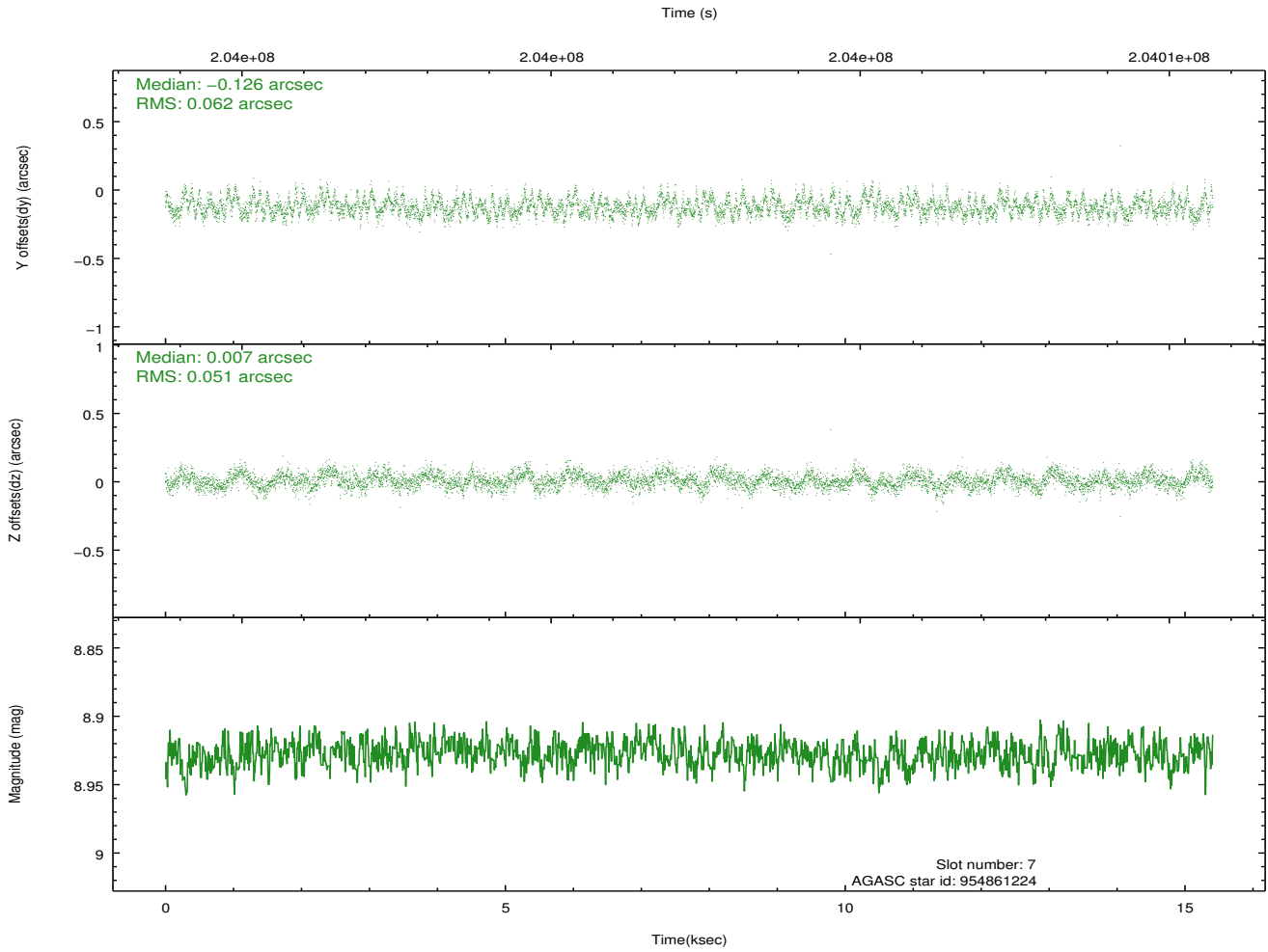
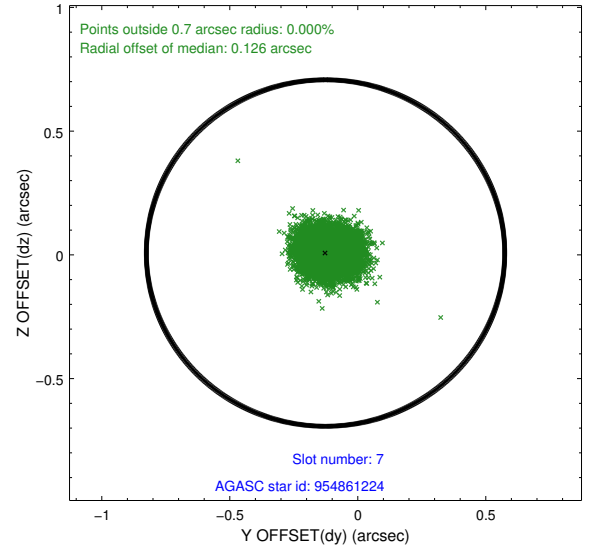
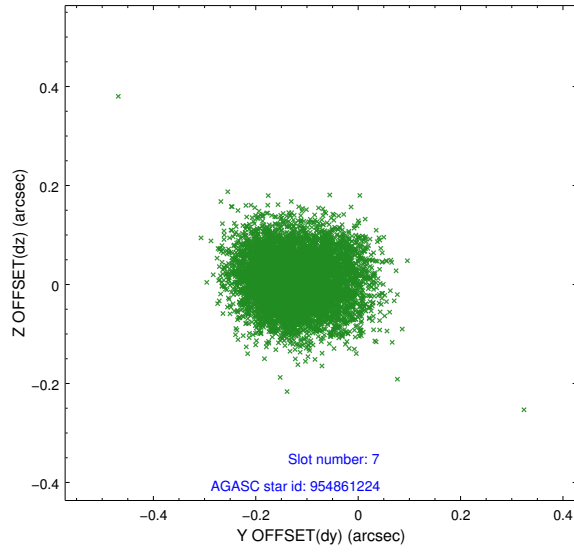
2.4.3 Slot 5



2.4.4 Slot 6

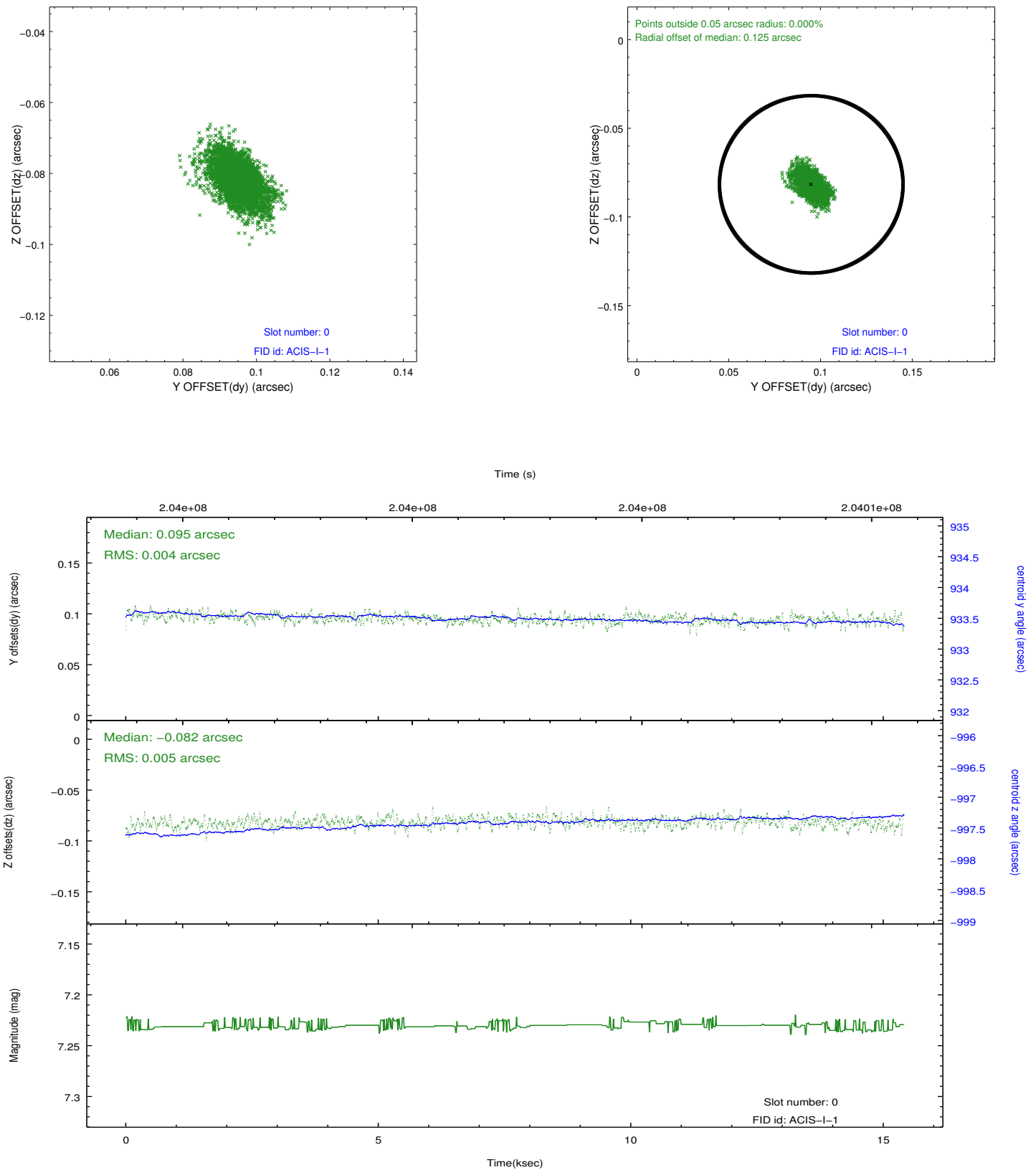


2.4.5 Slot 7

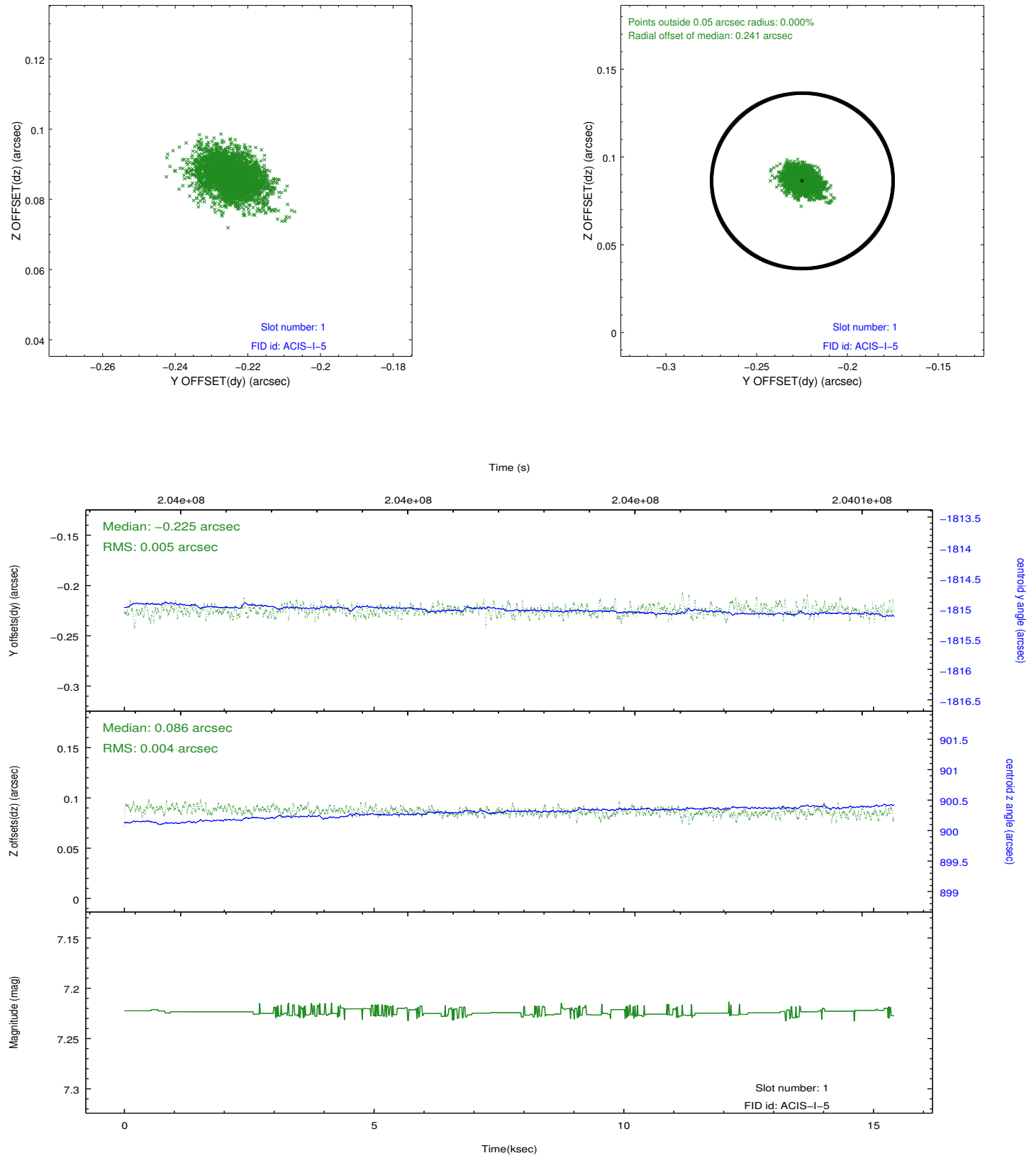


2.5 FID Slots

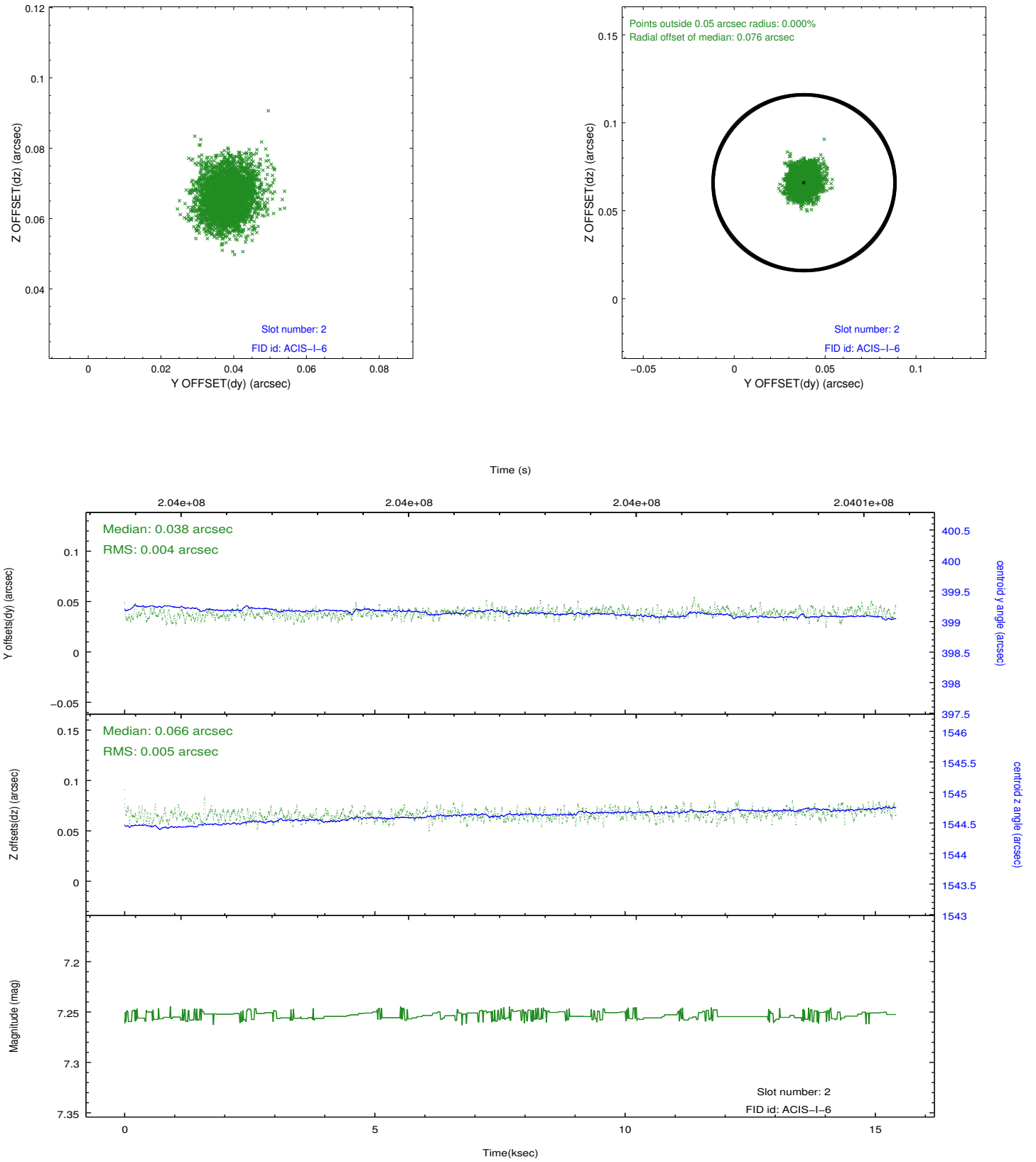
2.5.1 Slot 0



2.5.2 Slot 1



2.5.3 Slot 2



A Summary

A.1 Status

V&V Scientist	Jen Lauer
V&V Date (YYYY-MM-DD)	2013.04.01
V&V Edition	1
V&V Disposition and Status	OK
V&V Charge Time	15.01

A.2 Comments

A spatial region of the original bias map for CCD = 3 suffered from anomalously high data values. Pixels in the event data that were bias-corrected by one of the original affected bias pixels may have an apparent energy shift. While the change in energy is expected to be small (~ 20 eV), it depends on many parameters that have not yet been fully explored for this bias anomaly. The bias map for CCD = 3 has been reconstructed for this processing to remove this anomaly using scaled data from a comparable bias map from another observation. The pixels affected by the anomaly are bounded by sky coords:
(210.90621,-33.91099),(210.90244,-33.91079),(210.89513,-34.01012),(210.89891,-34.01032)