

V&V Reference Report

L2 ASCDS Version : 7.6.7.2

Observation 4995 - L2 Version 001
Chandra X-Ray Center

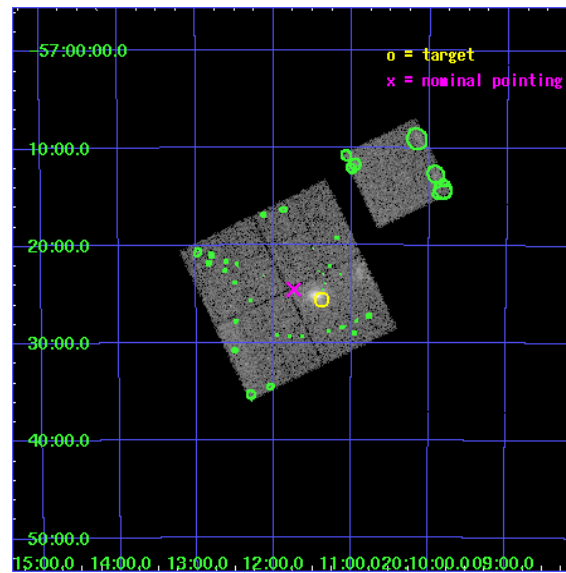
L2 Processing Date : May 1 2006

Contents

1	Front	2
2	OBI	3
2.1	OBI	3
2.1.1	Images	3
2.1.2	Bias	3
2.1.3	Parameters	4
2.1.4	Events	4
2.2	Compared Parameters	5
2.3	Aspect	6
2.4	Star Slots	9
2.4.1	Slot 3	9
2.4.2	Slot 4	10
2.4.3	Slot 5	11
2.4.4	Slot 6	12
2.4.5	Slot 7	13
2.5	FID Slots	14
2.5.1	Slot 0	14
2.5.2	Slot 1	15
2.5.3	Slot 2	16
3	Point Sources	17
A	Summary	18
A.1	Status	18
A.2	Comments	18

1 Front

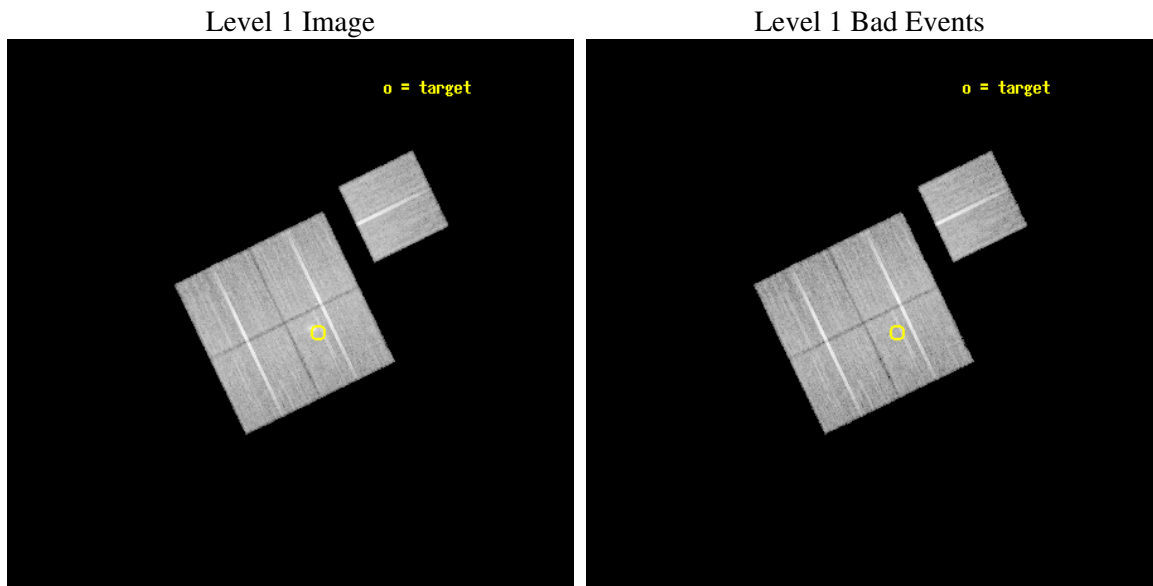
seq_num	800438
obs_id	4995
title	Studying the effect of merging clusters in cosmological cluster samples
observer	Prof. Hans Boehringer
object	RXCJ2011.3-5725
dtcycle	0
cycle	P
ra_targ	302.84625
dec_targ	-57.4275
ra_nom	302.93551224487
dec_nom	-57.409167258091
roll_nom	64.18087357082
revision	2
ontime	24313.299953252
livetime	23995.628790172
ontime0	24307.017972827
ontime1	24313.299953252
ontime2	24307.017972738
ontime3	24313.299953252
ontime6	24313.299953252
l2events	69680



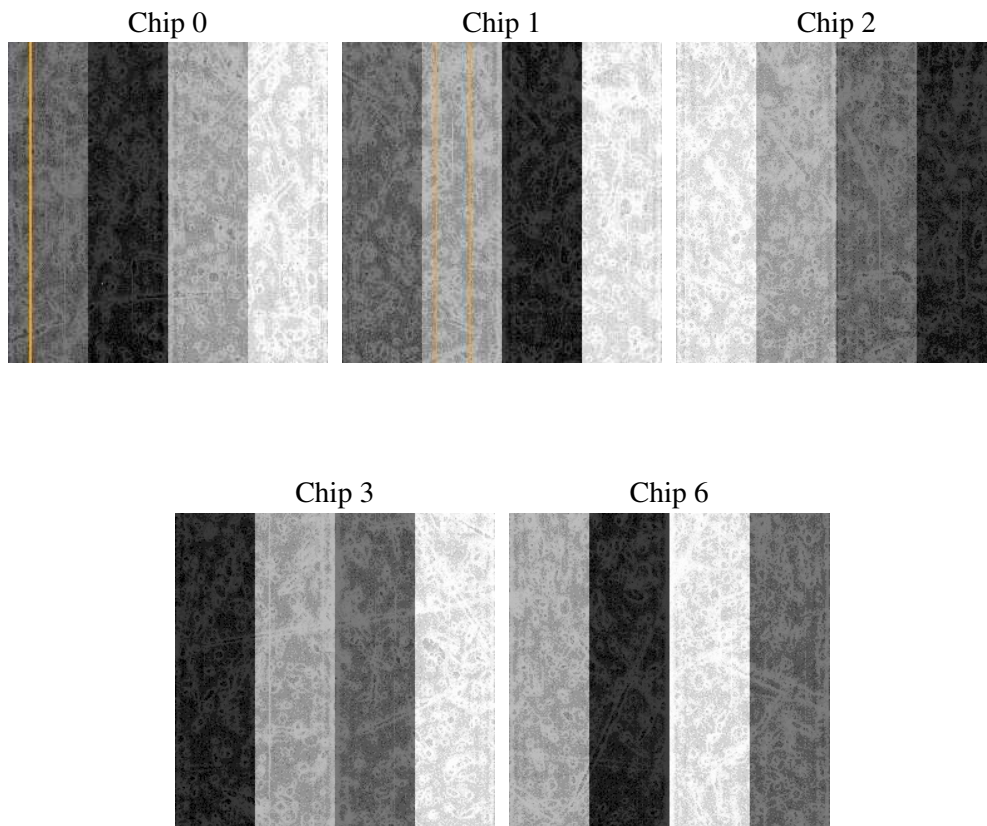
2 OBI

2.1 OBI

2.1.1 Images



2.1.2 Bias



2.1.3 Parameters

obi_num	0
ascdsver	7.6.7.2
caldbver	3.2.1
date	2006-05-01T12:10:54
revision	2

sched_exp_time	24142.000000
ontime	25445.322645515
ontime0	25435.899684846
ontime1	25445.322645515
ontime2	25439.040665001
ontime3	25445.322645515
ontime6	25445.322645515
l1events	773587

2.1.4 Events

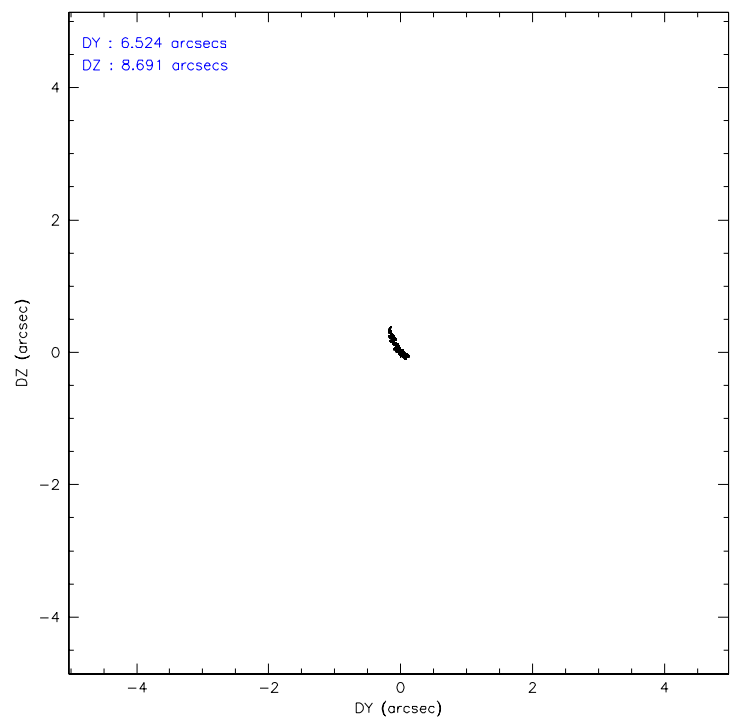
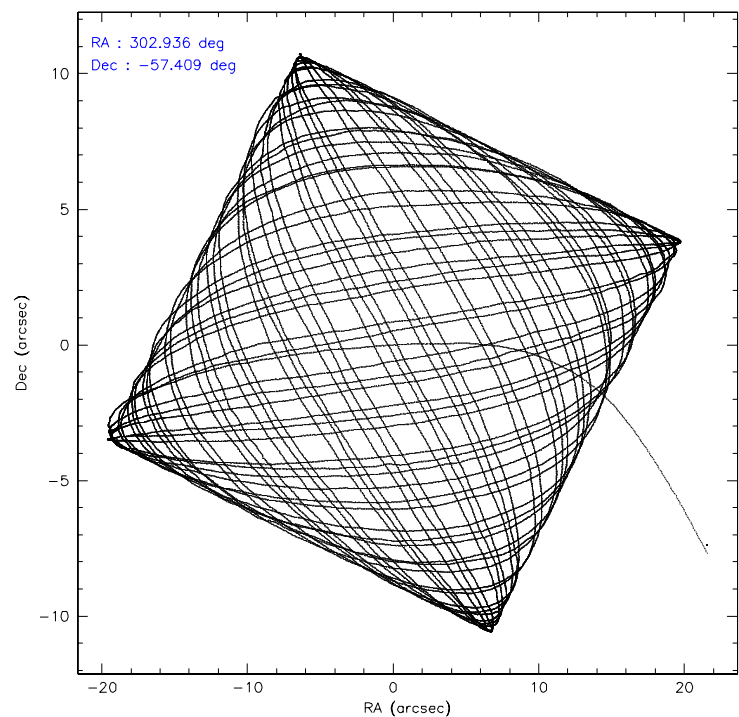
	ccd 0	ccd 1	ccd 2	ccd 3	ccd 6
level 1 events	146801	147927	161977	158743	158139
rejected events	131599	131187	147164	138822	142428
rejected %	89%	88%	90%	87%	90%

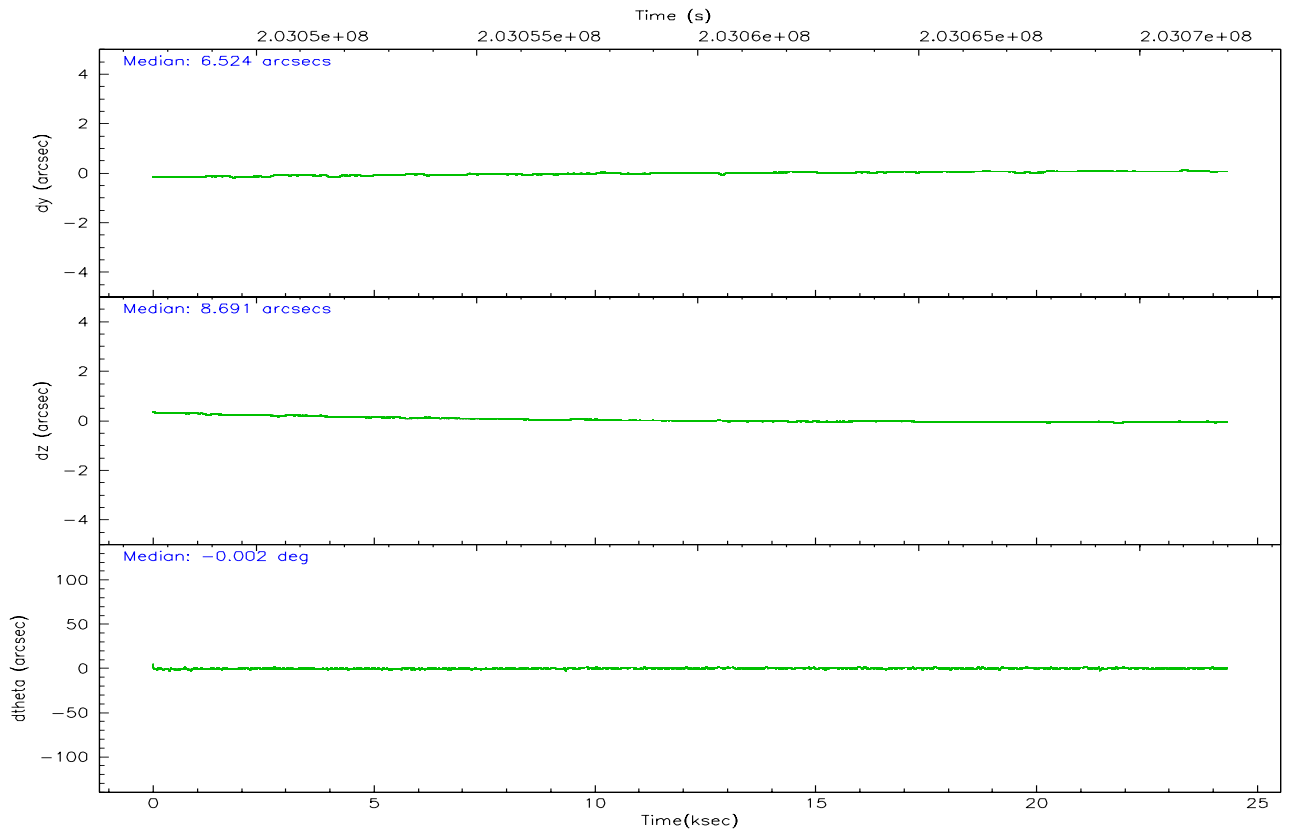
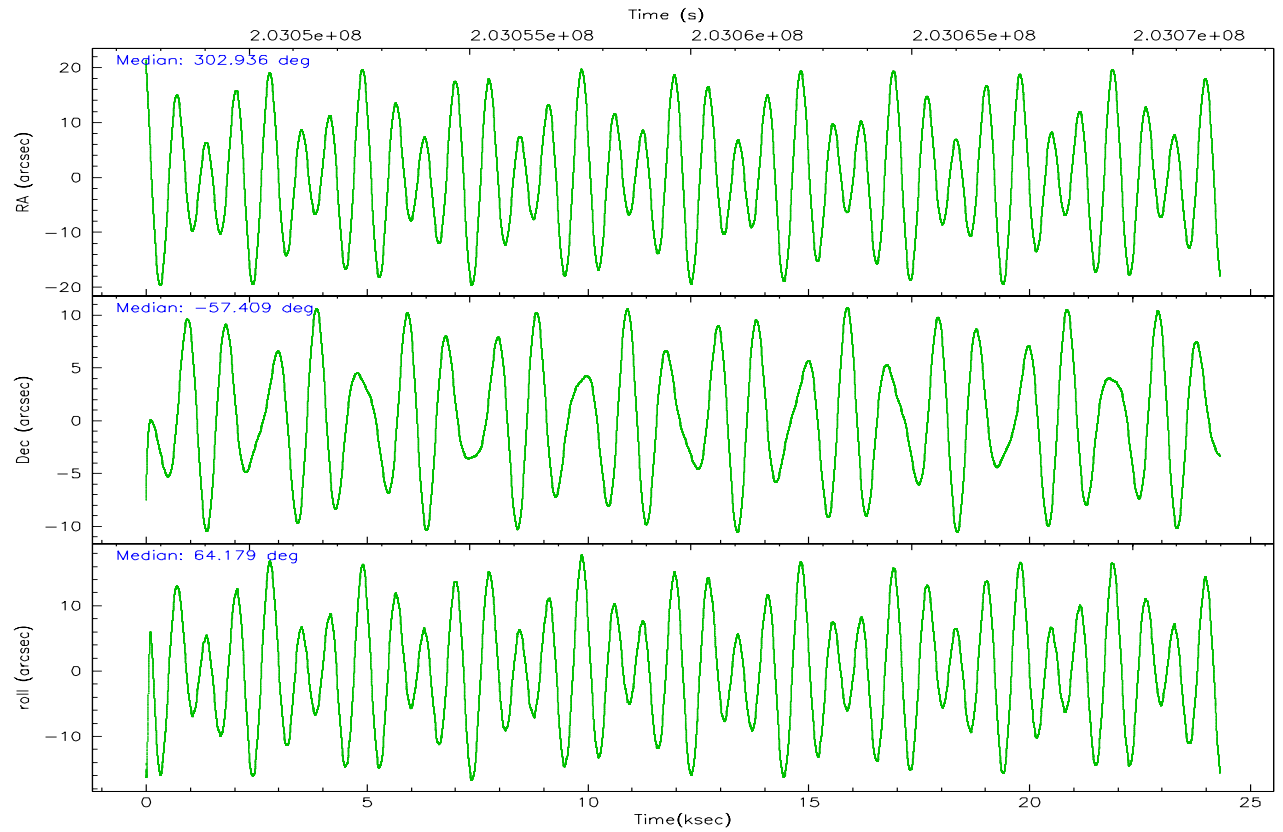
	ccd 0	ccd 1	ccd 2	ccd 3	ccd 6
grade 0 events	5690	6482	5883	10236	6064
	3%	4%	3%	6%	3%
grade 1 events	75	78	109	105	73
	0%	0%	0%	0%	0%
grade 2 events	3610	3599	3507	3581	3373
	2%	2%	2%	2%	2%
grade 3 events	1856	2020	1671	1981	1842
	1%	1%	1%	1%	1%
grade 4 events	1674	1983	1714	1818	1755
	1%	1%	1%	1%	1%
grade 5 events	5469	5760	5133	6104	6186
	3%	3%	3%	3%	3%
grade 6 events	3034	3411	2809	3046	3451
	2%	2%	1%	1%	2%
grade 7 events	125393	124594	141151	131872	135395
	85%	84%	87%	83%	85%

2.2 Compared Parameters

Parameter	Planned	Actual	Parameter	Planned	Actual
Instrument	ACIS	ACIS	Obspar format version number	6	6
Detector	ACIS-01236	ACIS-01236	Obspar file type	PREDICTED	ACTUAL
Grating	NONE	NONE	Obspar update status	NONE	UPDATED
Data mode	VFAINT	VFAINT	On-chip summing requested	N	N
Observation mode	POINTING	POINTING	Subarray requested	NONE	NONE
Pointing RA	302.939444	302.9355122448694	Alternating exposures requested	N	N
Pointing Dec	-57.436463	-57.40916725809123	Primary exposure time	0.000000	3.1
Pointing Roll	63.975519	64.18087357081954			
SIM focus pos (mm)	-0.782348	-0.7809083437167272			
SIM defocus (mm)	0	0.001439871863259334			
SIM translation stage pos (mm)	-233.592463	-233.5874344608287			
SIM translation stage offset (mm)	0	-0.005018542100998502			
Observation start time	203047838.184000	203046285.48874			
Observation start date	2004-06-08T02:09:34	2004-06-08T01:44:45			
Observation end time	203071980.184000	203072700.2524			
Observation end date	2004-06-08T08:51:56	2004-06-08T09:05:00			
Read mode	TIMED	TIMED			

2.3 Aspect



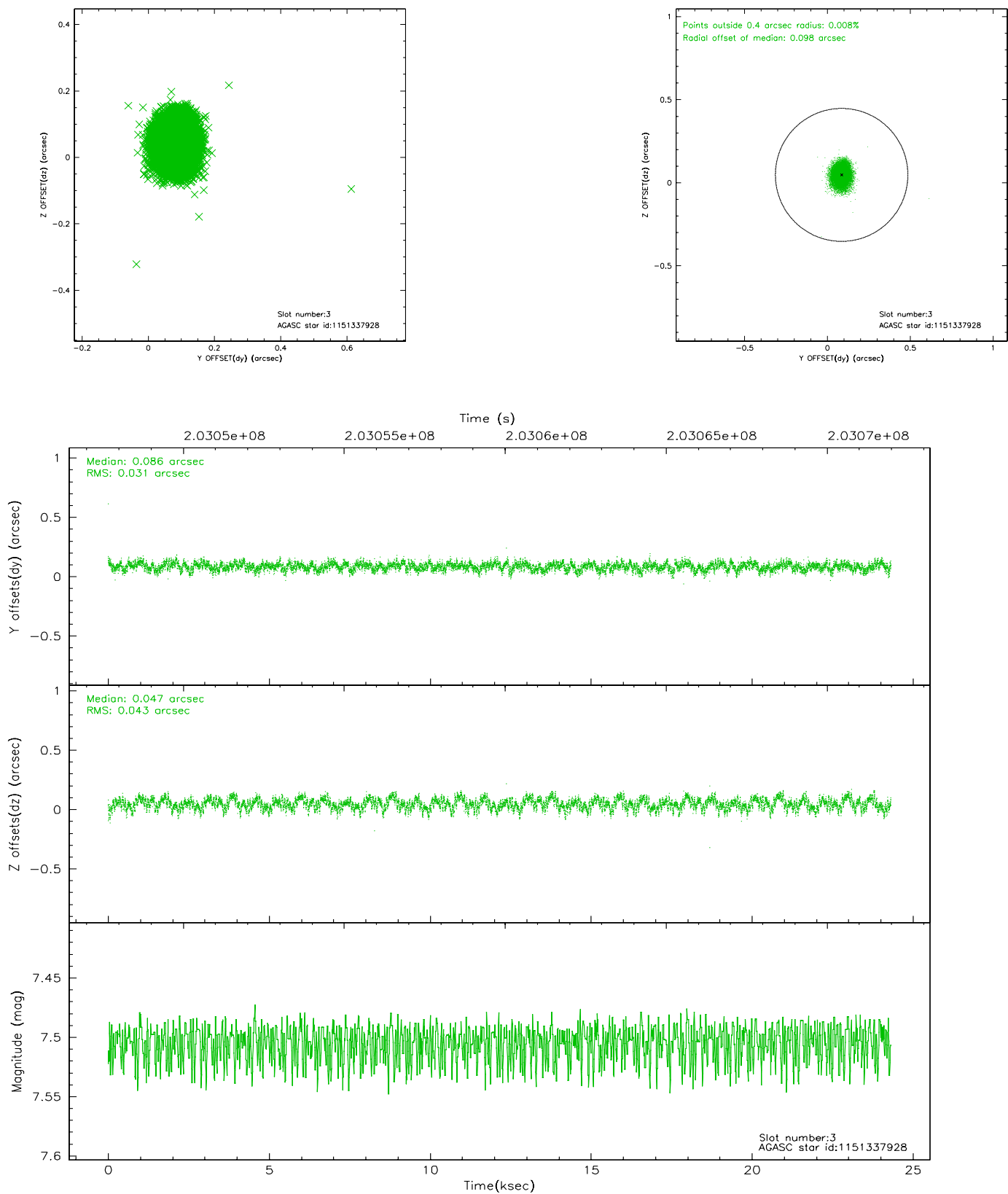


Slot Statistics

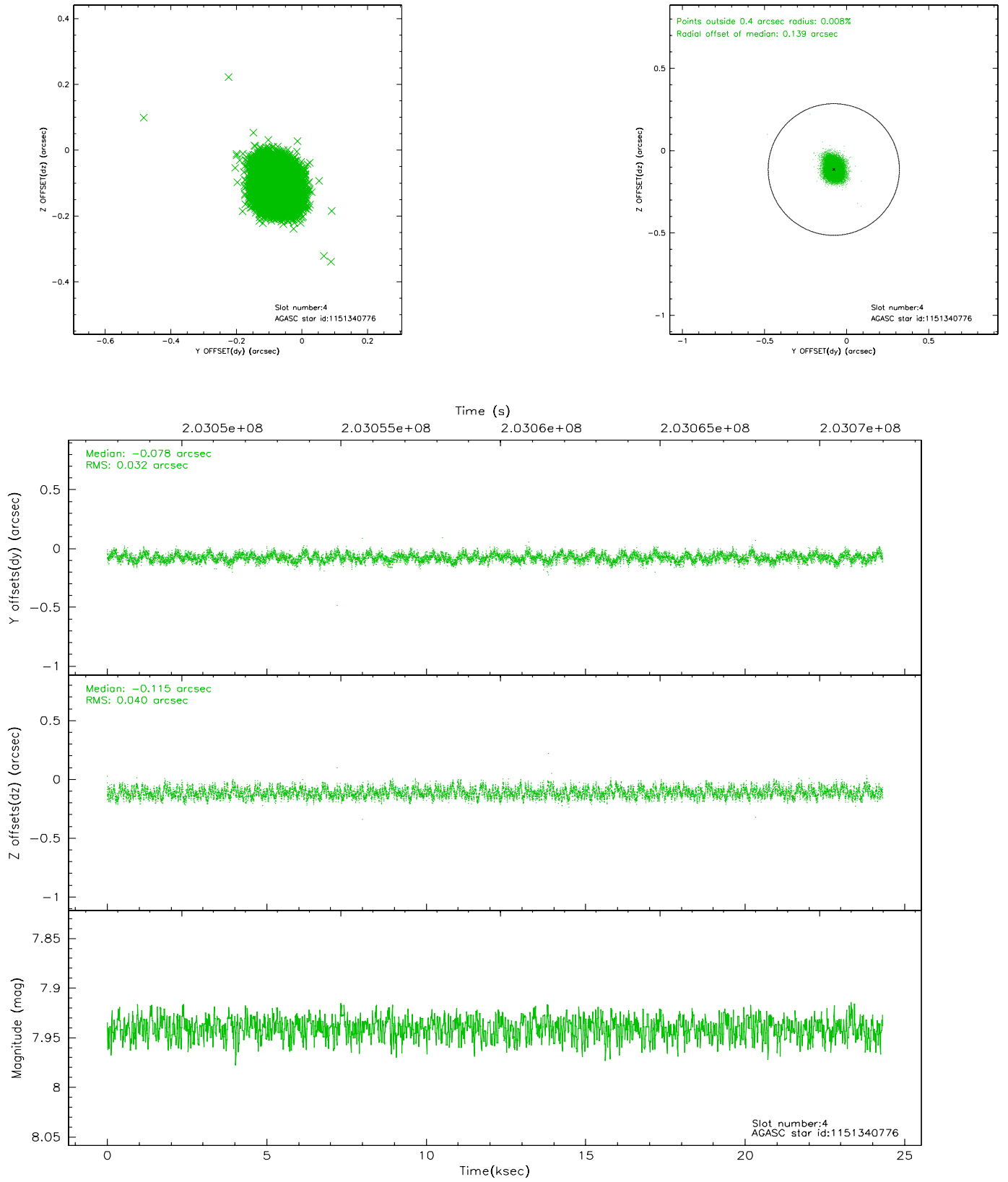
slot	status	id	mag	n_pts	med_dy	med_dz	dr1	dr2	ra	dec	mean_y	mean_z
0	FID	ACIS-I-2	7.14	5932	-0.039	-0.030	0.010	0.017	0.000000	0.000000	-761.03	-838.56
1	FID	ACIS-I-4	7.19	5931	0.073	0.038	0.009	0.017	0.000000	0.000000	2153.09	1067.59
2	FID	ACIS-I-5	7.23	5932	-0.135	0.060	0.011	0.017	0.000000	0.000000	-1814.78	1065.63
3	GUIDE	1151337928	7.50	11865	0.086	0.047	0.057	0.089	303.142902	-58.116577	-2030.61	-1422.45
4	GUIDE	1151340776	7.94	11865	-0.078	-0.115	0.055	0.087	302.320116	-57.331751	-194.20	1244.33
5	GUIDE	1151350112	9.16	11859	0.012	-0.126	0.082	0.133	303.241865	-56.846660	2168.34	396.20
6	GUIDE	1151472992	9.61	11854	0.016	0.111	0.089	0.143	303.531180	-57.237033	1146.97	-722.80
7	GUIDE	1151471432	9.88	11851	-0.035	0.081	0.113	0.184	303.351325	-57.459643	273.16	-754.20

2.4 Star Slots

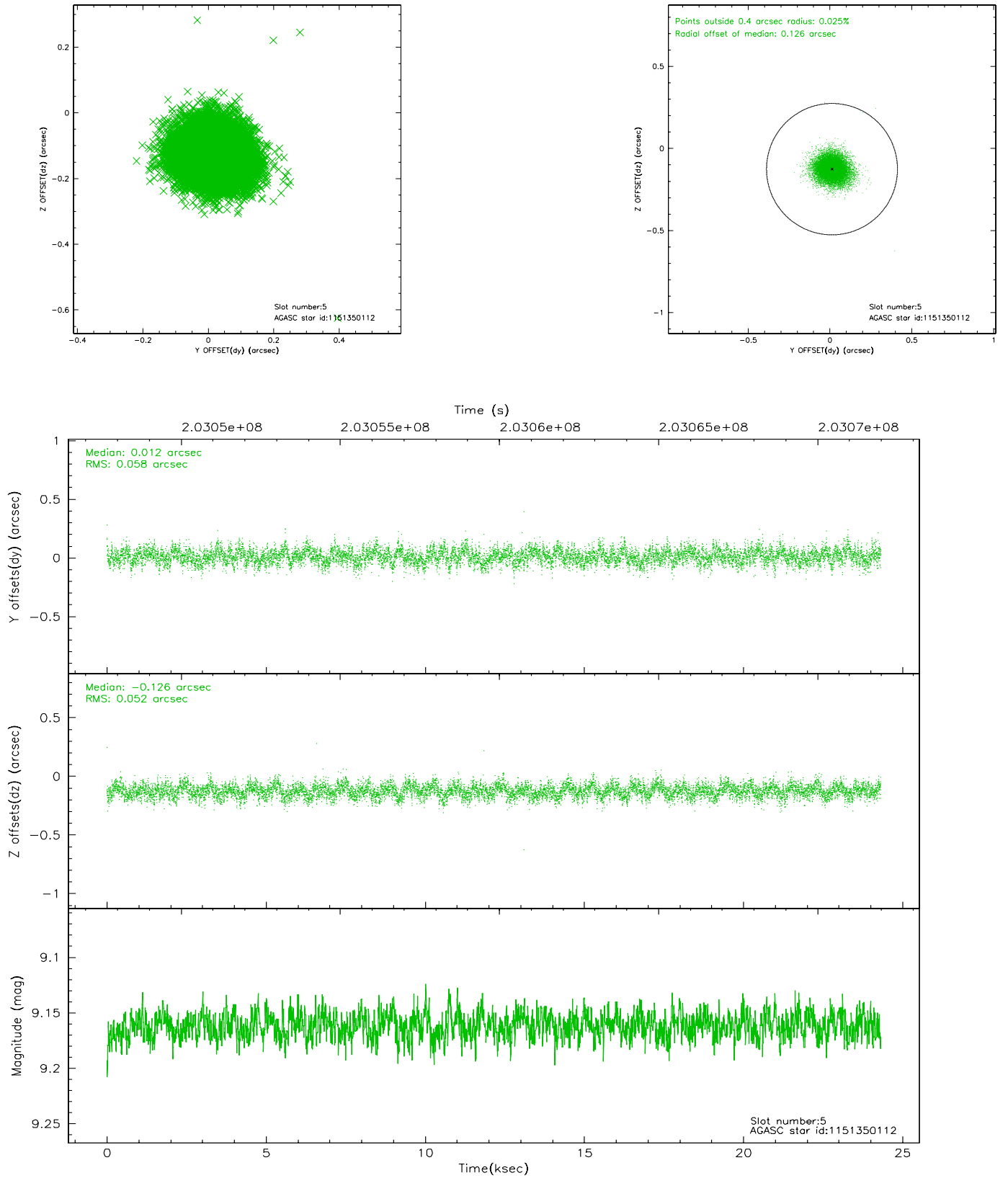
2.4.1 Slot 3



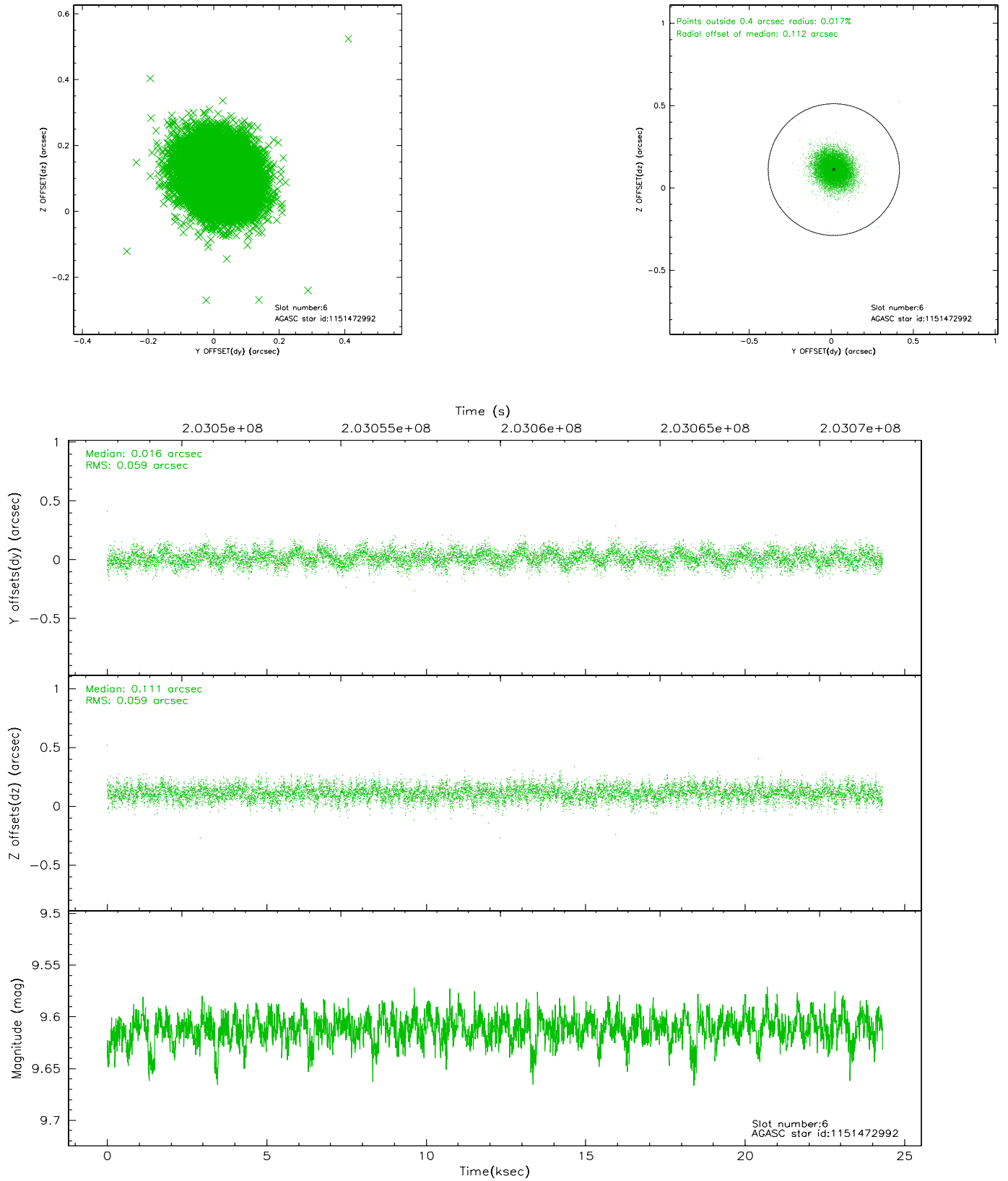
2.4.2 Slot 4



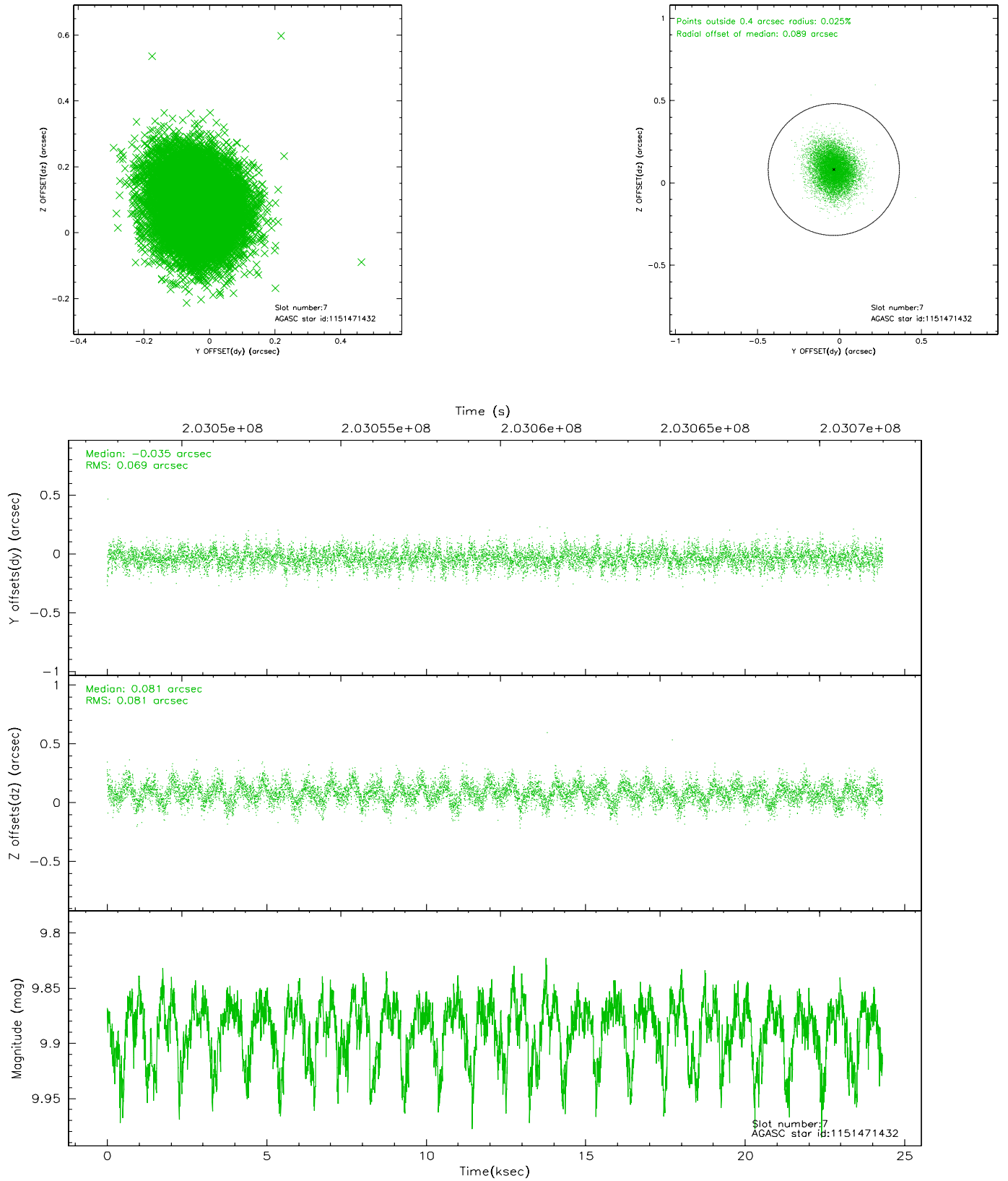
2.4.3 Slot 5



2.4.4 Slot 6

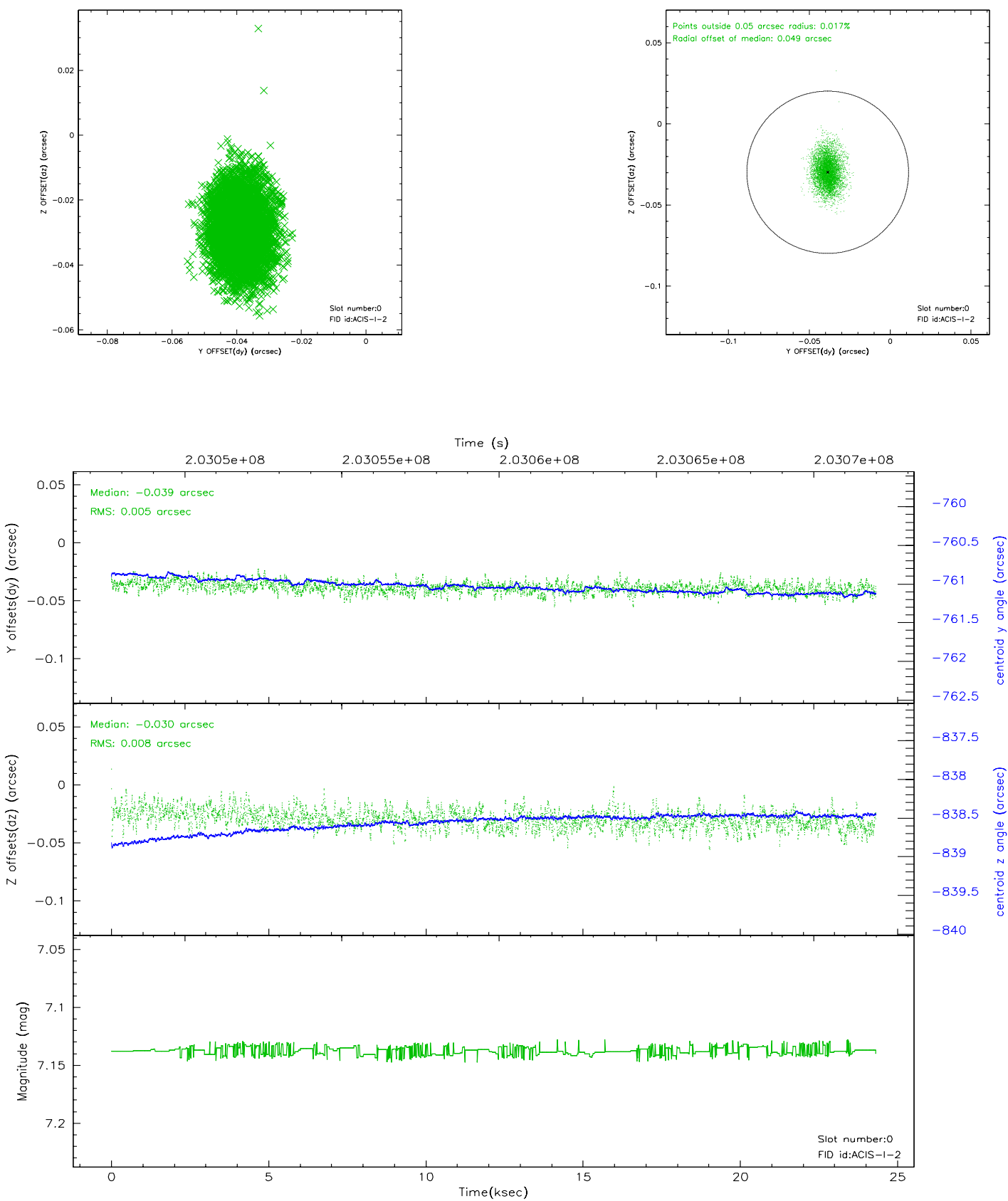


2.4.5 Slot 7

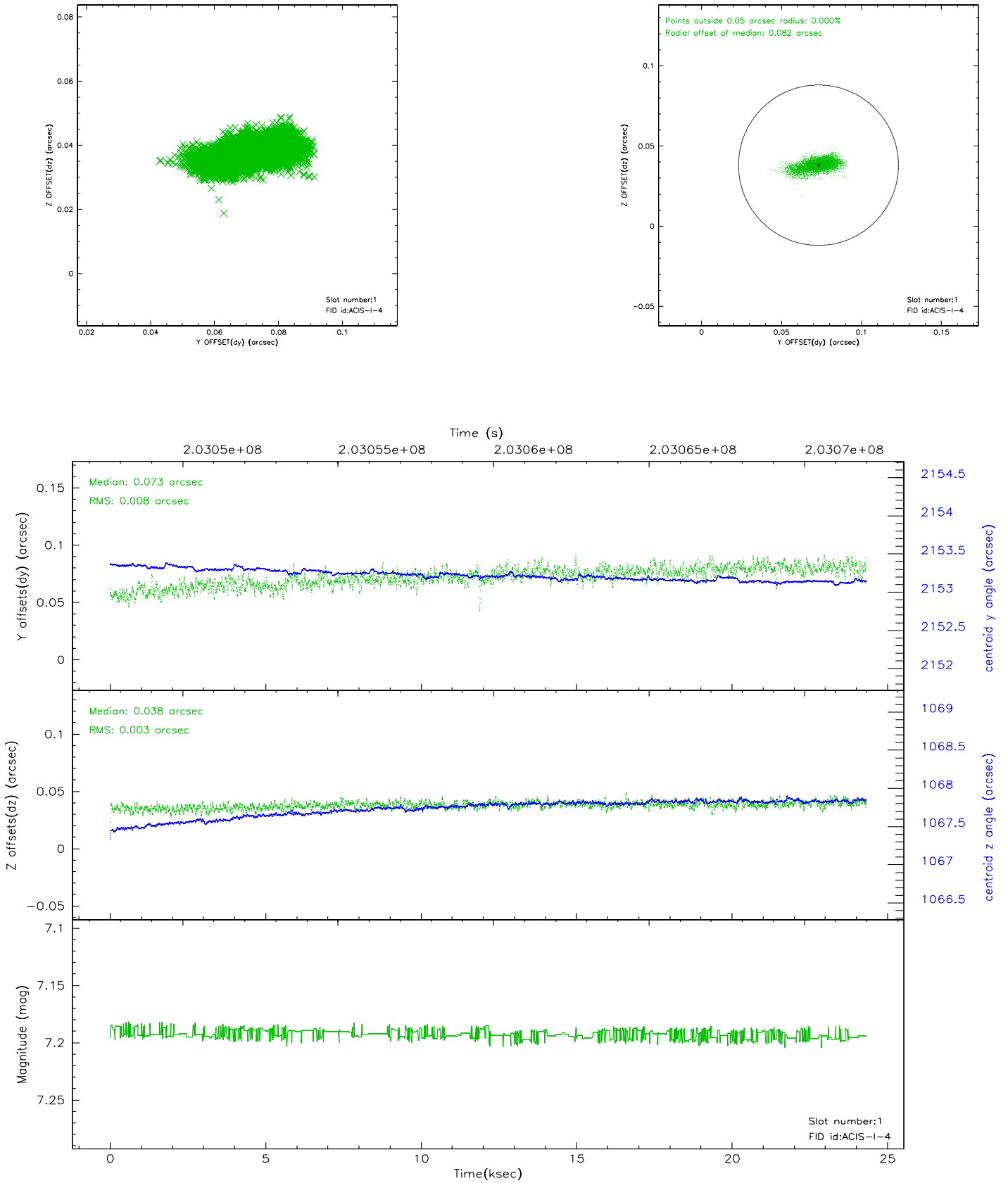


2.5 FID Slots

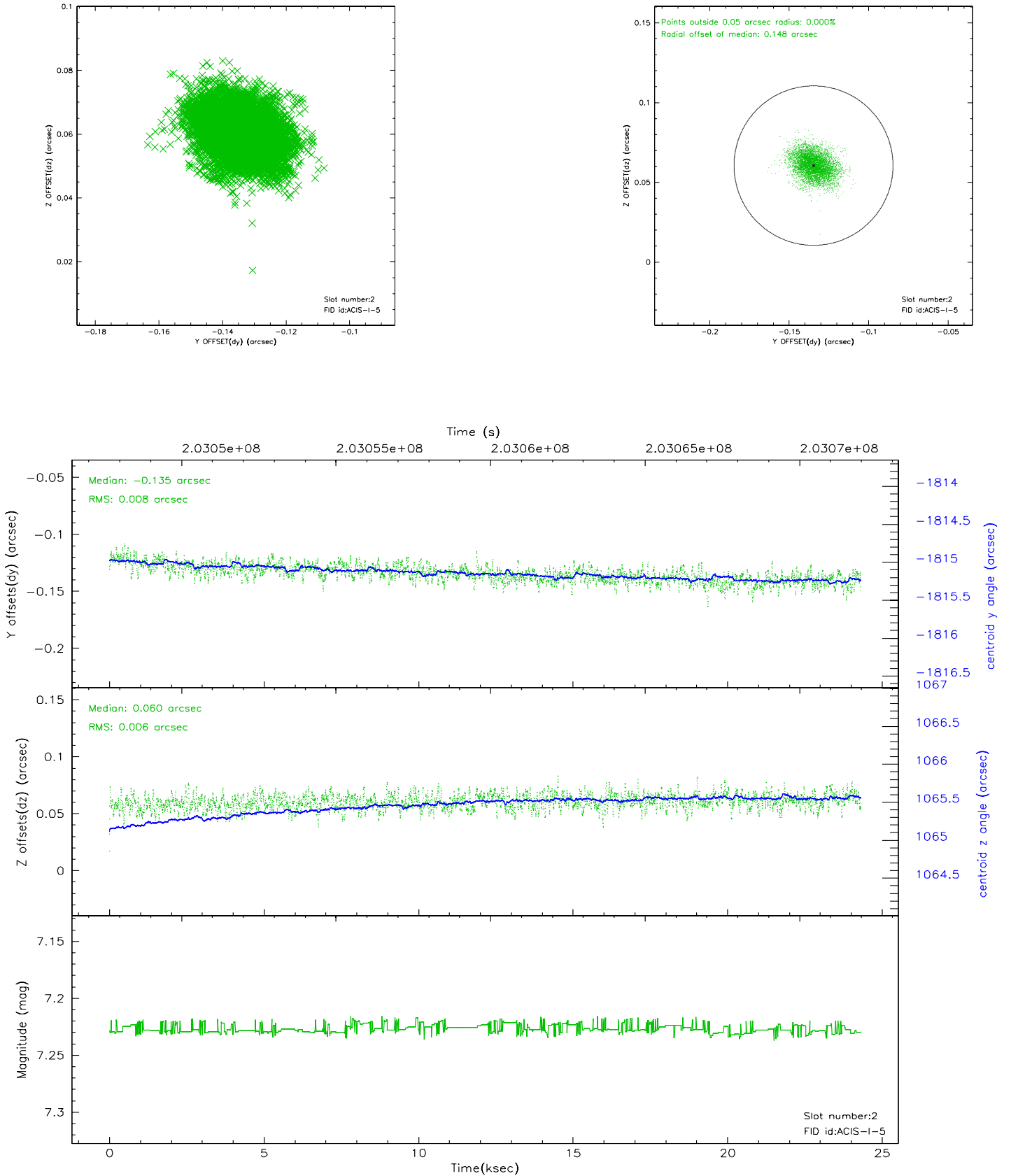
2.5.1 Slot 0



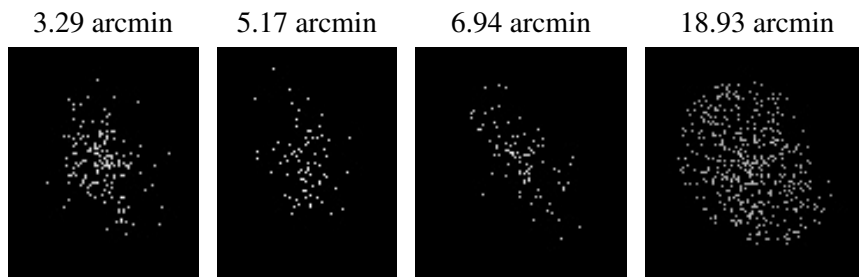
2.5.2 Slot 1



2.5.3 Slot 2



3 Point Sources



A Summary

A.1 Status

V&V Scientist	Jen Lauer
V&V Date (YYYY-MM-DD)	2006.05.01
V&V Edition	1
V&V Disposition and Status	OK
V&V Charge Time	24.313

A.2 Comments