

V&V Reference Report

L2 ASCDS Version : 7.6.7.2

Observation 4989 - L2 Version 001
Chandra X-Ray Center

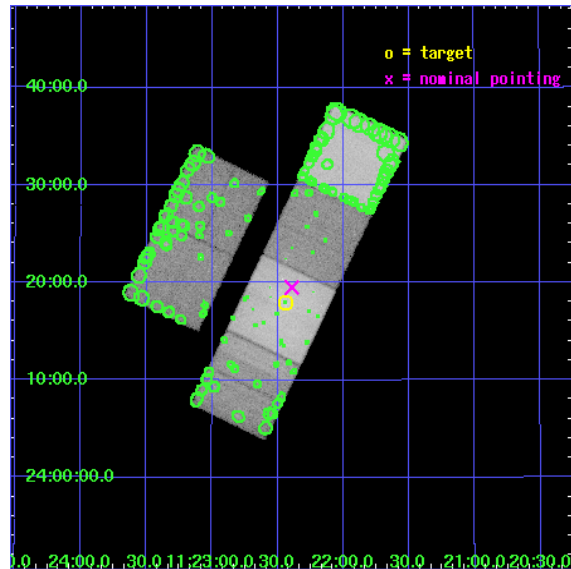
L2 Processing Date : Jun 2 2006

Contents

1	Front	2
2	OBI	3
2.1	OBI	3
2.1.1	Images	3
2.1.2	Bias	3
2.1.3	Parameters	4
2.1.4	Events	4
2.2	Compared Parameters	5
2.3	Aspect	6
2.4	Star Slots	9
2.4.1	Slot 3	9
2.4.2	Slot 4	10
2.4.3	Slot 5	11
2.4.4	Slot 6	12
2.4.5	Slot 7	13
2.5	FID Slots	14
2.5.1	Slot 0	14
2.5.2	Slot 1	15
2.5.3	Slot 2	16
3	Point Sources	17
A	Summary	18
A.1	Status	18
A.2	Comments	18

1 Front

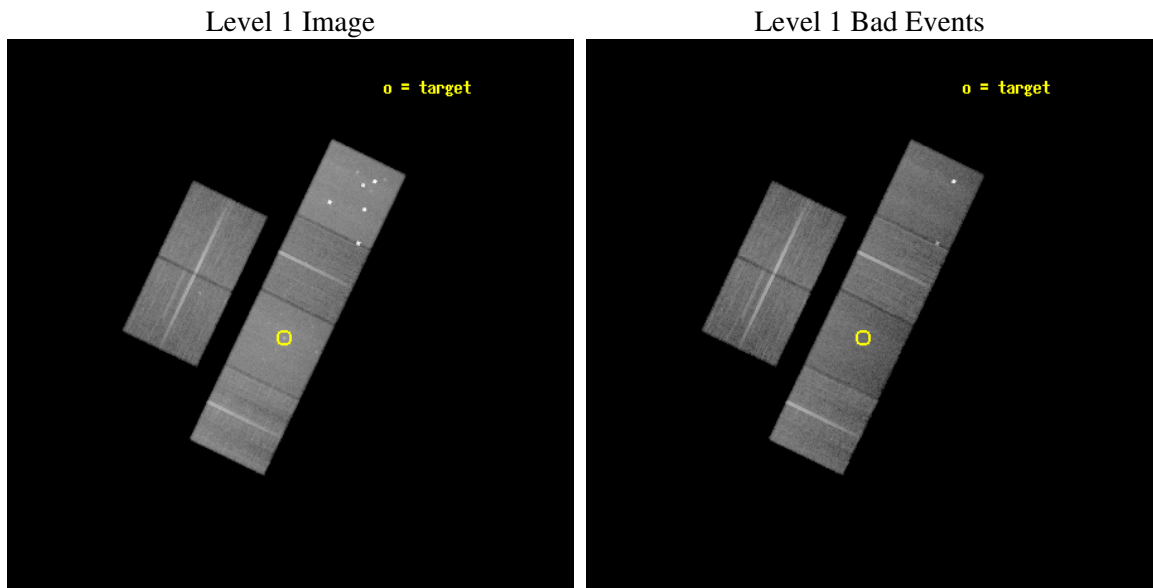
seq_num	800432
obs_id	4989
title	X-Ray Bright Hickson Compact Groups: the Origin and Distribution of Metallicity and the Regulation of Cooling Flows
observer	DR. JAN VRTILEK
object	HCG 51
dtcycle	0
cycle	P
ra_targ	170.61
dec_targ	24.298333
ra_nom	170.59794630005
dec_nom	24.325232994259
roll_nom	115.66159550511
revision	2
ontime	39033.599854589
livetime	38539.332910018
ontime2	39033.599854589
ontime3	39033.599854589
ontime5	39033.599854589
ontime6	39033.599854589
ontime7	39033.599854589
ontime8	39023.876963556
l2events	562843



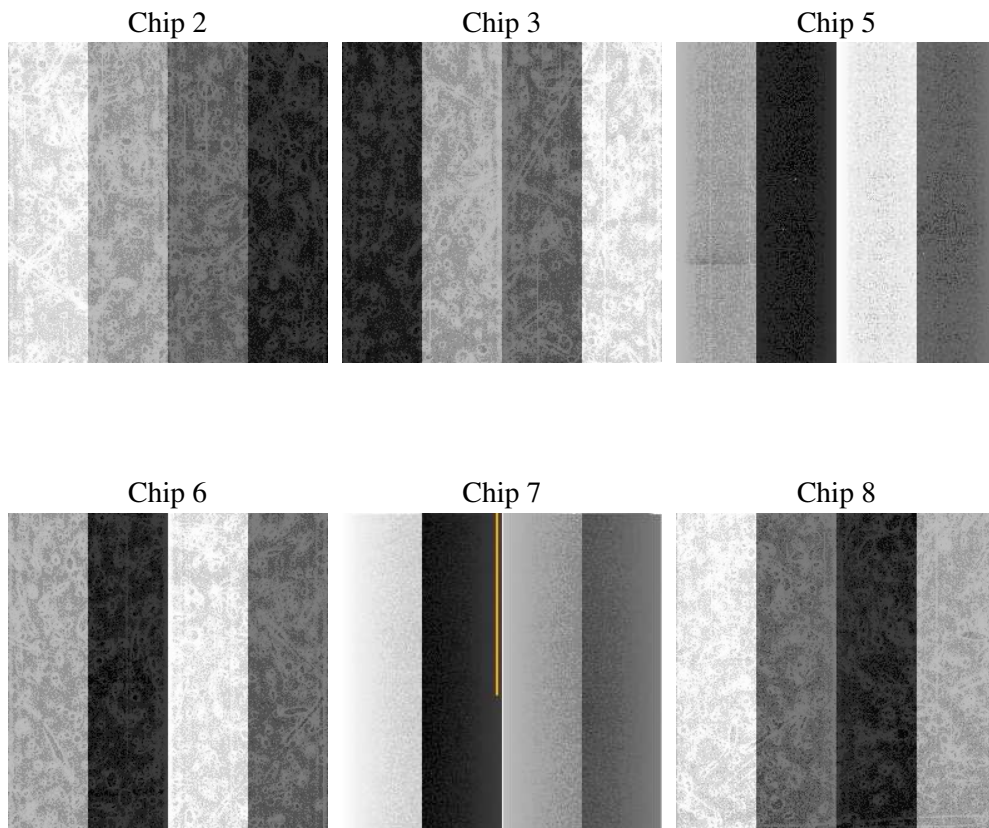
2 OBI

2.1 OBI

2.1.1 Images



2.1.2 Bias



2.1.3 Parameters

obi_num	0
ascdsver	7.6.7.2
caldsver	3.2.2
date	2006-06-02T12:37:10
revision	2

sched_exp_time	38881.628000
ontime	40327.901534408
ontime2	40327.901524514
ontime3	40327.901524514
ontime5	40327.901524514
ontime6	40327.901524514
ontime7	40327.901534408
ontime8	40318.178633481
l1events	1804232

2.1.4 Events

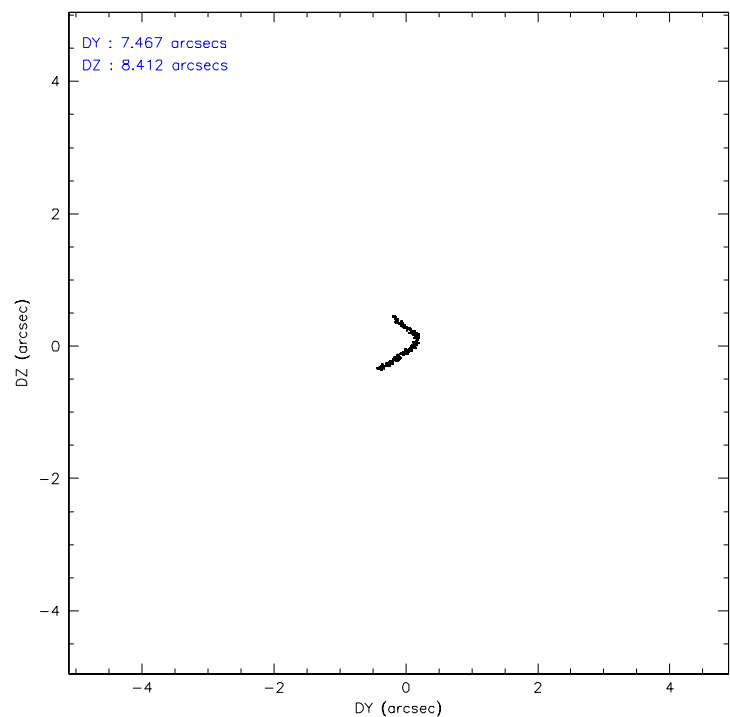
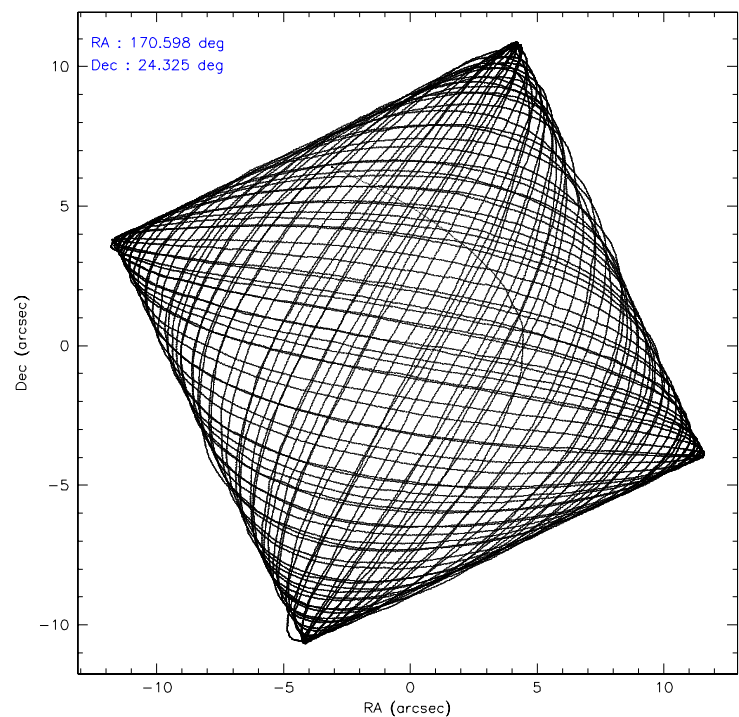
	ccd 2	ccd 3	ccd 5	ccd 6	ccd 7	ccd 8
level 1 events	262547	241202	401777	255926	327958	314822
rejected events	211886	190580	174413	197140	150736	212082
rejected %	80%	79%	43%	77%	45%	67%

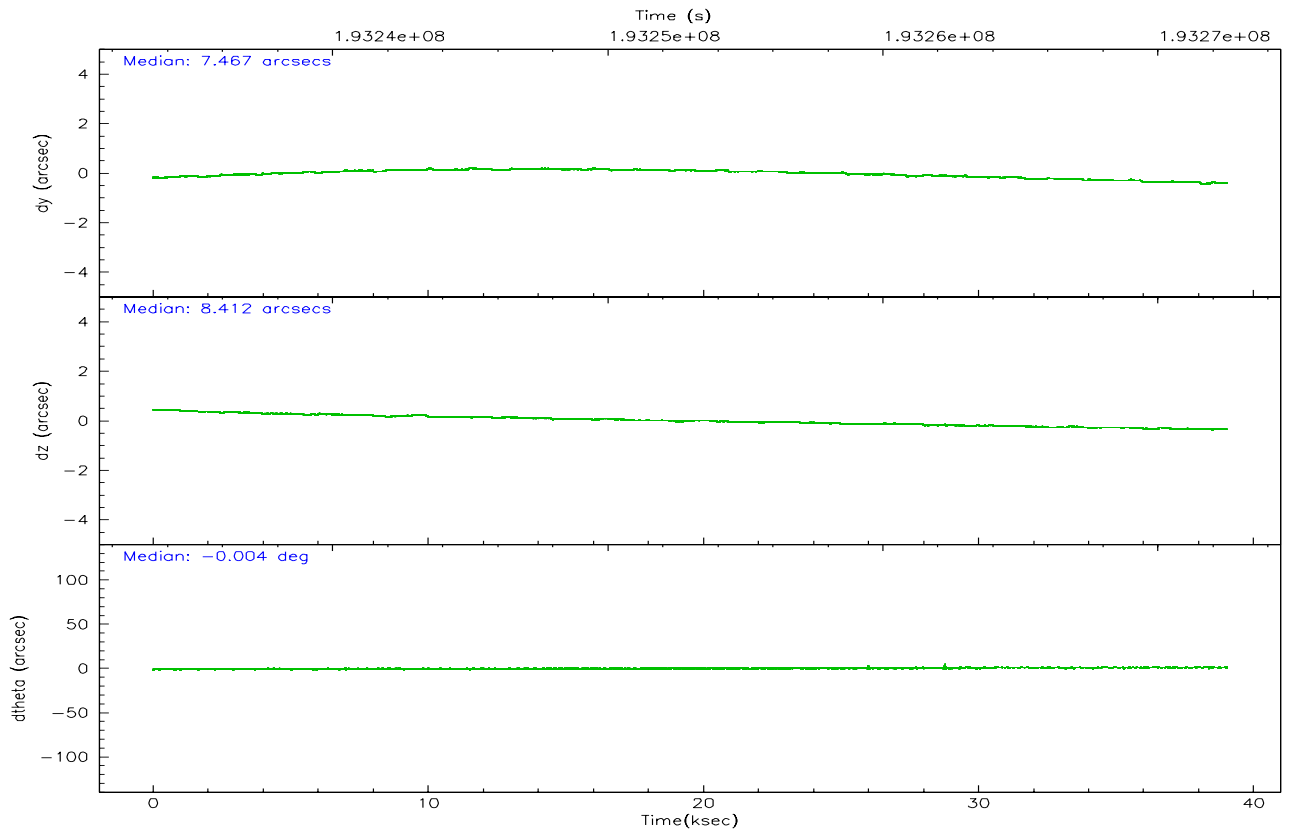
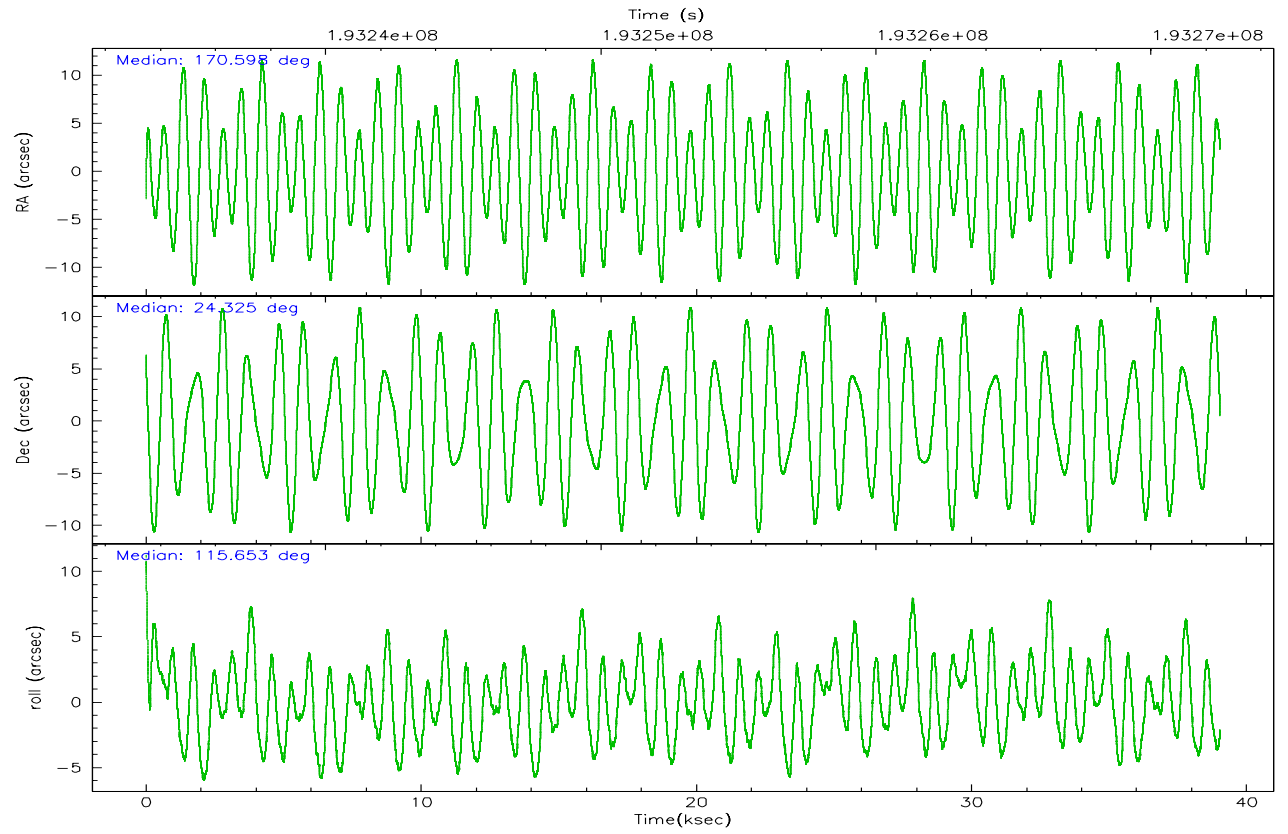
	ccd 2	ccd 3	ccd 5	ccd 6	ccd 7	ccd 8
grade 0 events	28218	28360	43640	33422	17296	49851
	10%	11%	10%	13%	5%	15%
grade 1 events	230	229	369	204	113	296
	0%	0%	0%	0%	0%	0%
grade 2 events	8543	8101	64450	9338	42044	18367
	3%	3%	16%	3%	12%	5%
grade 3 events	3761	3903	6438	4083	11028	8343
	1%	1%	1%	1%	3%	2%
grade 4 events	3801	3854	5373	4060	10559	7938
	1%	1%	1%	1%	3%	2%
grade 5 events	7387	8410	16932	8712	18318	11993
	2%	3%	4%	3%	5%	3%
grade 6 events	7046	7112	112391	8633	99561	20182
	2%	2%	27%	3%	30%	6%
grade 7 events	203561	181233	152184	187474	129039	197852
	77%	75%	37%	73%	39%	62%

2.2 Compared Parameters

Parameter	Planned	Actual	Parameter	Planned	Actual
Instrument	ACIS	ACIS	Obspar format version number	6	6
Detector	ACIS-235678	ACIS-235678	Obspar file type	PREDICTED	ACTUAL
Grating	NONE	NONE	Obspar update status	NONE	UPDATED
Data mode	VFAINT	VFAINT	On-chip summing requested	N	N
Observation mode	POINTING	POINTING	Subarray requested	NONE	NONE
Pointing RA	170.622843	170.5979463000512	Alternating exposures requested	N	N
Pointing Dec	24.310198	24.32523299425895	Primary exposure time	0.000000	3.2
Pointing Roll	115.494710	115.661595505114			
SIM focus pos (mm)	-0.684267	-0.6828225247311905			
SIM defocus (mm)	0	0.001444936568705701			
SIM translation stage pos (mm)	-190.132523	-190.1425803651734			
SIM translation stage offset (mm)	0	0.01005778216563158			
Observation start time	193233628.184000	193231927.48191			
Observation start date	2004-02-15T11:59:24	2004-02-15T11:32:07			
Observation end time	193272510.184000	193272824.4712			
Observation end date	2004-02-15T22:47:26	2004-02-15T22:53:44			
Read mode	TIMED	TIMED			

2.3 Aspect



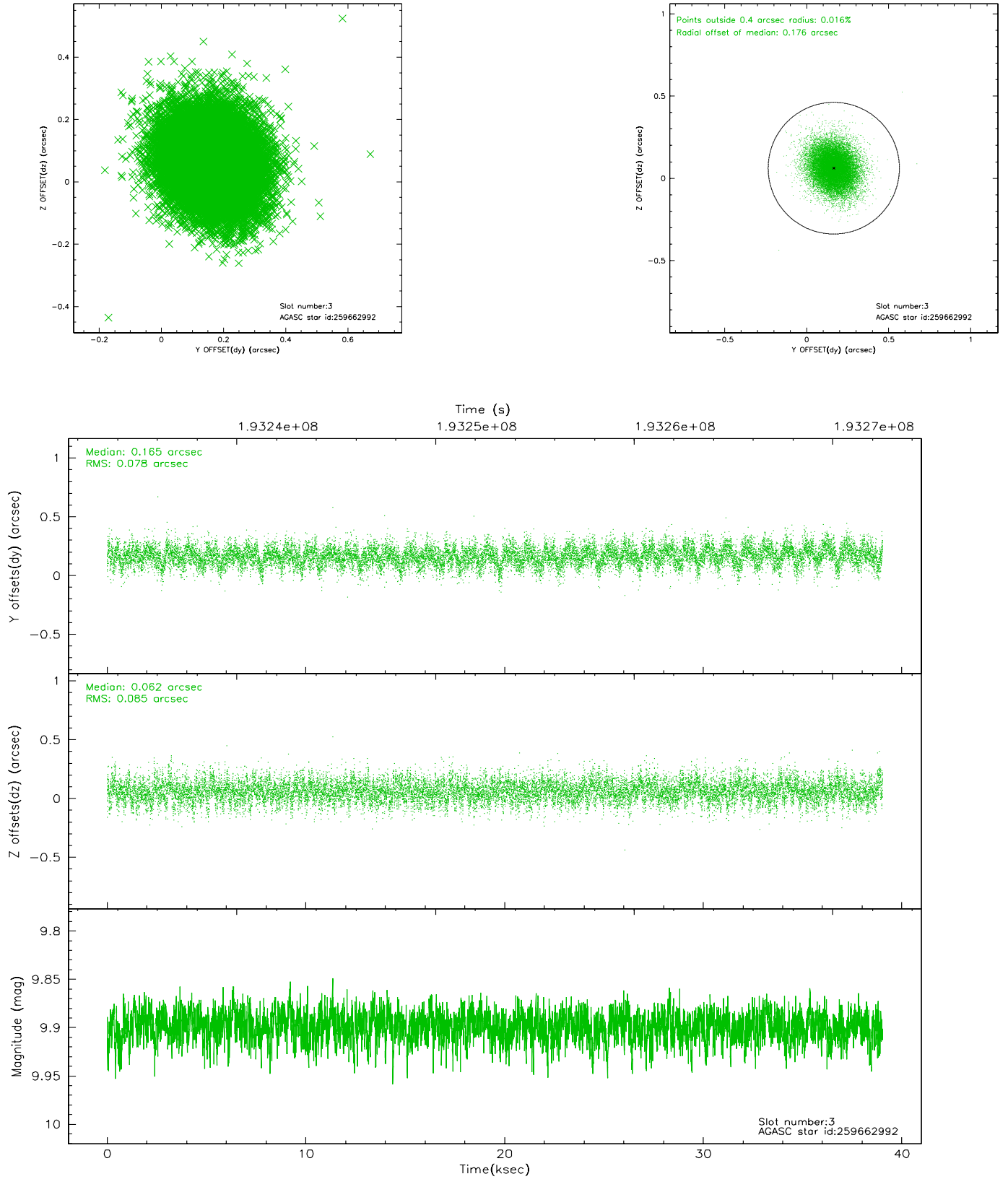


Slot Statistics

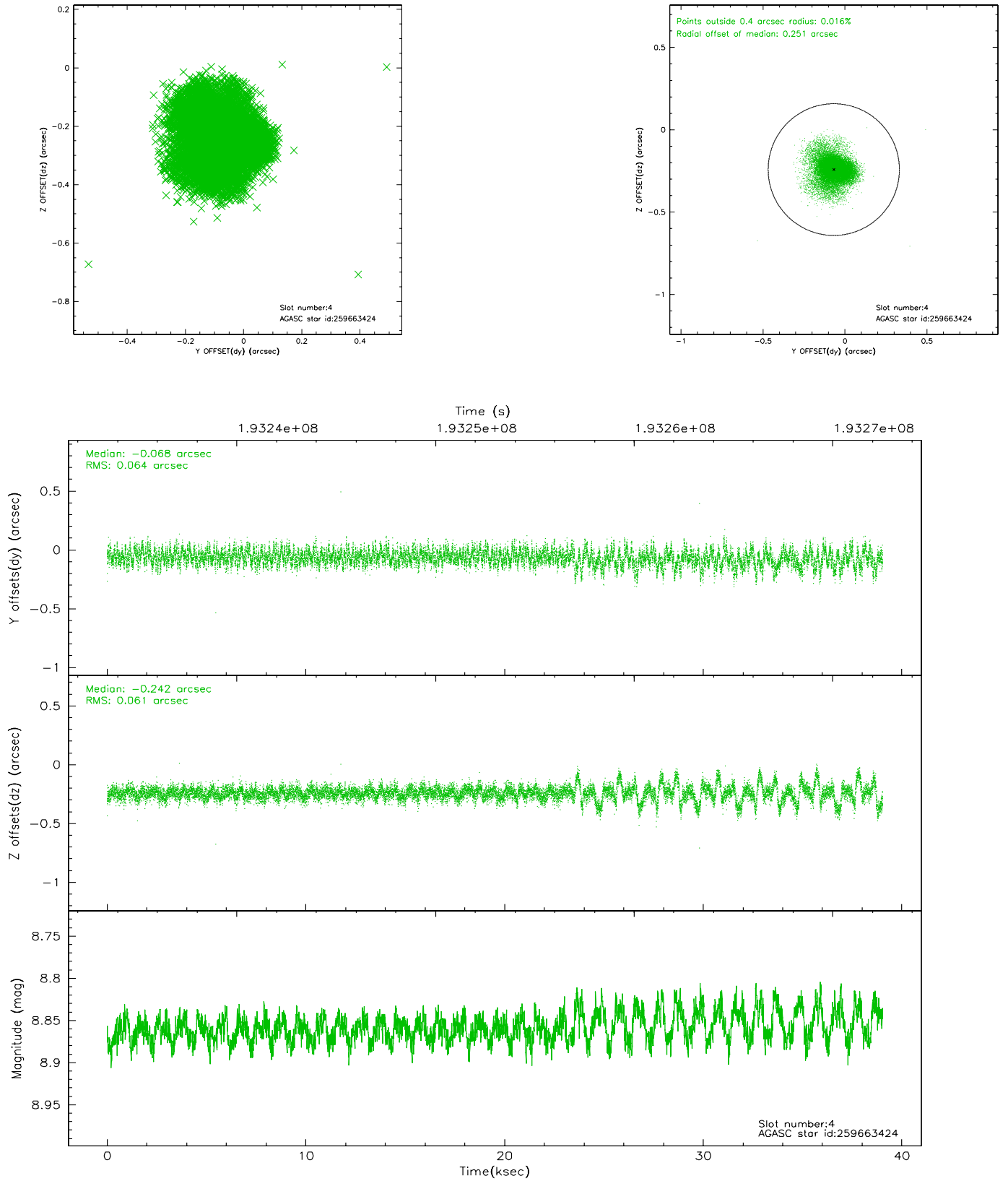
slot	status	id	mag	n_pts	med_dy	med_dz	dr1	dr2	ra	dec	mean_y	mean_z
0	FID	ACIS-S-2	7.10	9522	0.005	-0.013	0.007	0.012	0.000000	0.000000	-760.20	-1729.58
1	FID	ACIS-S-4	7.20	9521	0.012	0.001	0.007	0.012	0.000000	0.000000	2153.08	178.89
2	FID	ACIS-S-5	7.23	9520	-0.048	0.020	0.009	0.016	0.000000	0.000000	-1813.06	172.61
3	GUIDE	259662992	9.90	19023	0.165	0.062	0.123	0.200	170.634435	23.634300	-2212.42	1012.93
4	GUIDE	259663424	8.86	19038	-0.068	-0.242	0.089	0.166	170.243291	23.834131	-1007.60	1865.13
5	GUIDE	259663456	8.70	19040	-0.224	0.031	0.071	0.115	170.962709	24.951050	1606.46	-1994.16
6	GUIDE	259665288	8.62	19042	0.118	0.167	0.061	0.100	170.672049	24.733578	1307.18	-800.72
7	GUIDE	259665864	9.69	19030	0.011	-0.017	0.115	0.181	170.950609	24.417770	-111.53	-1136.68

2.4 Star Slots

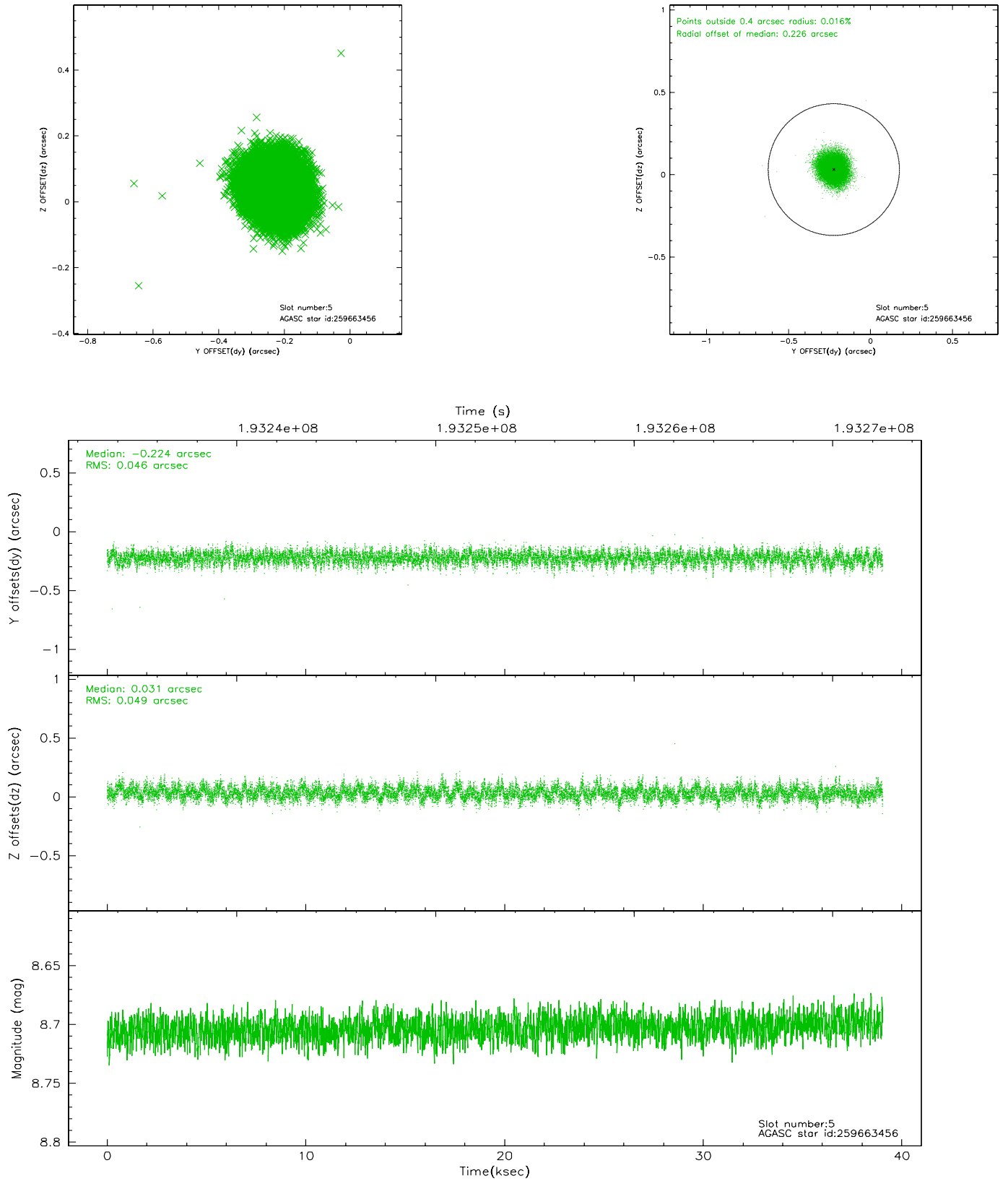
2.4.1 Slot 3



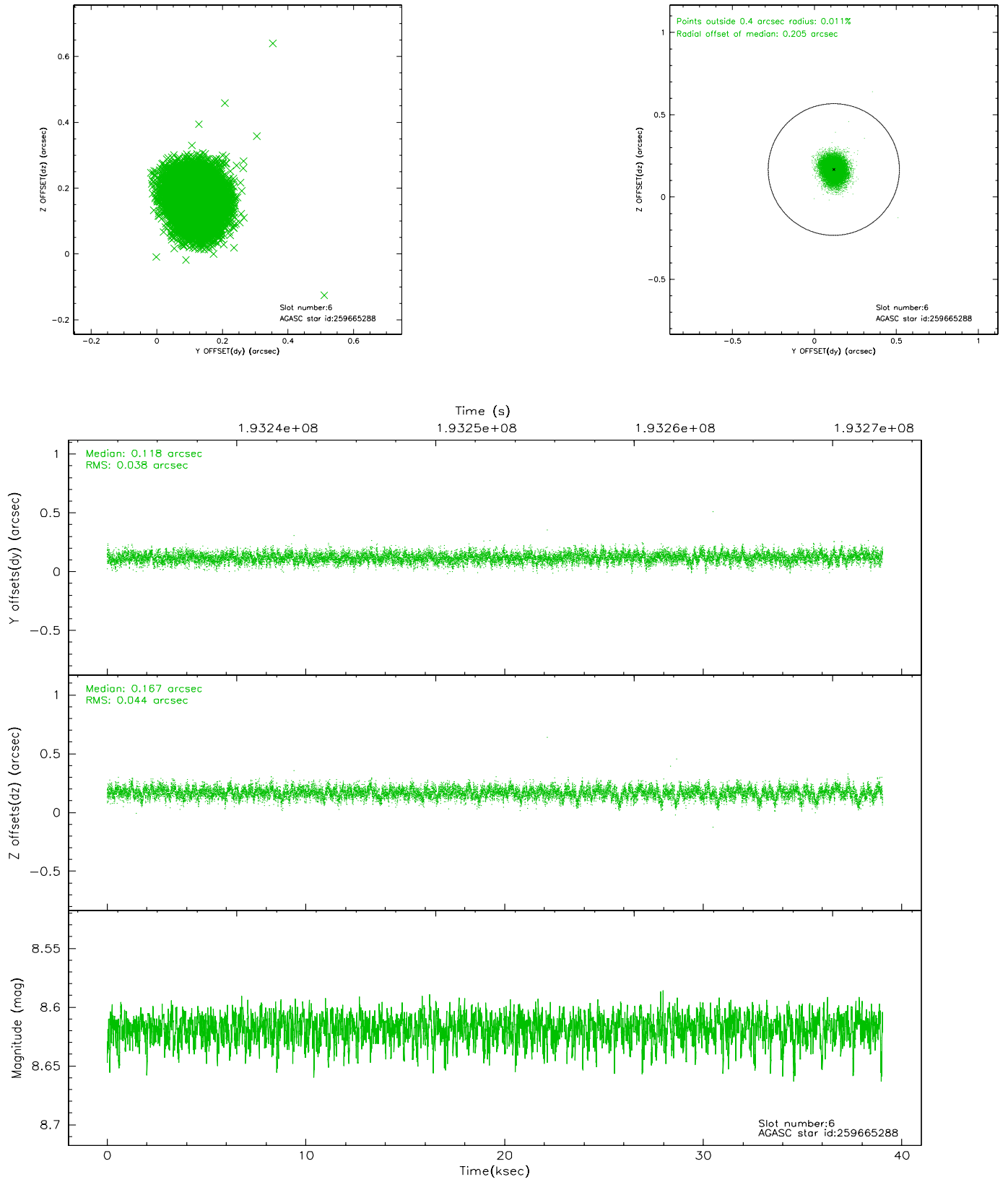
2.4.2 Slot 4



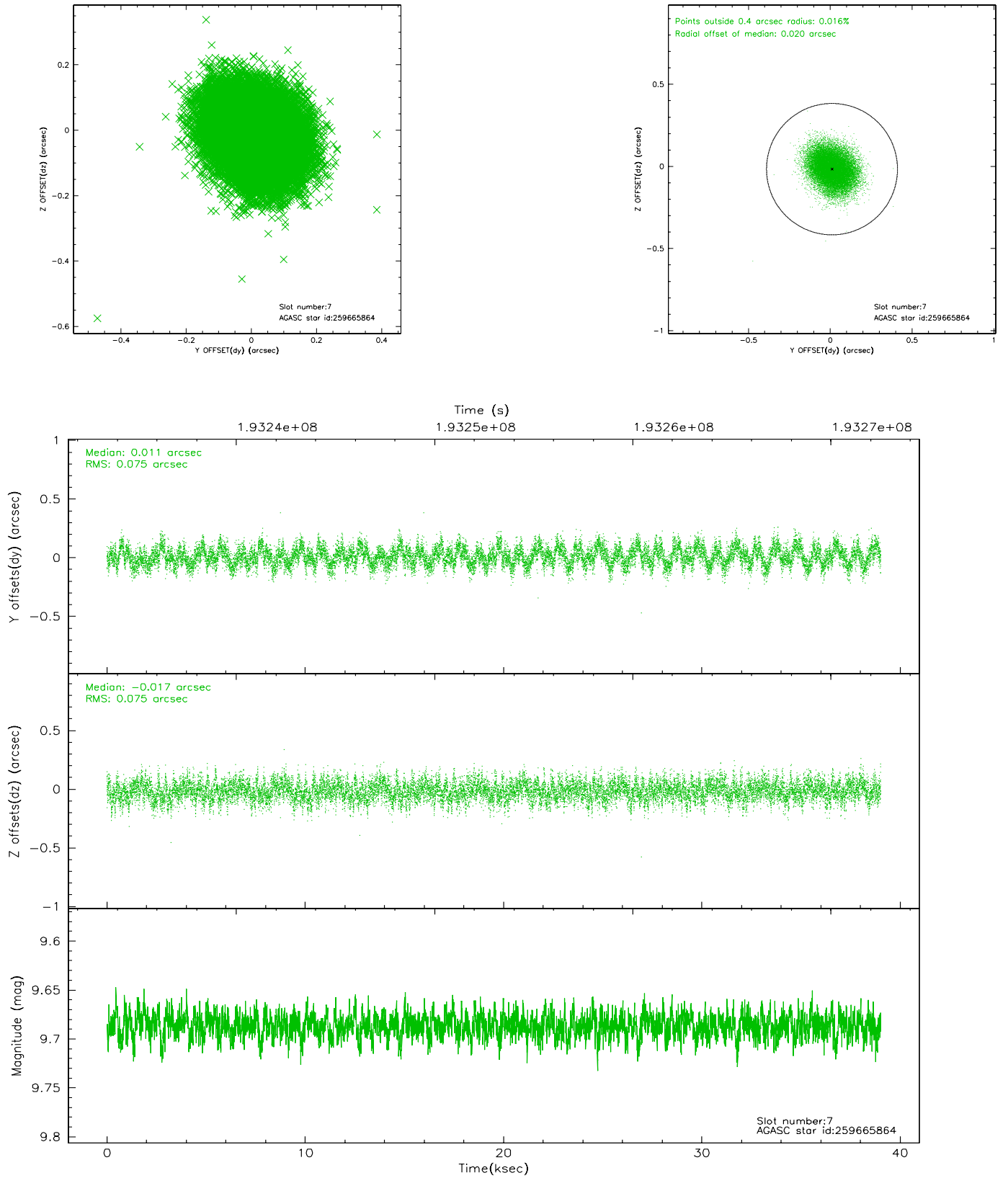
2.4.3 Slot 5



2.4.4 Slot 6

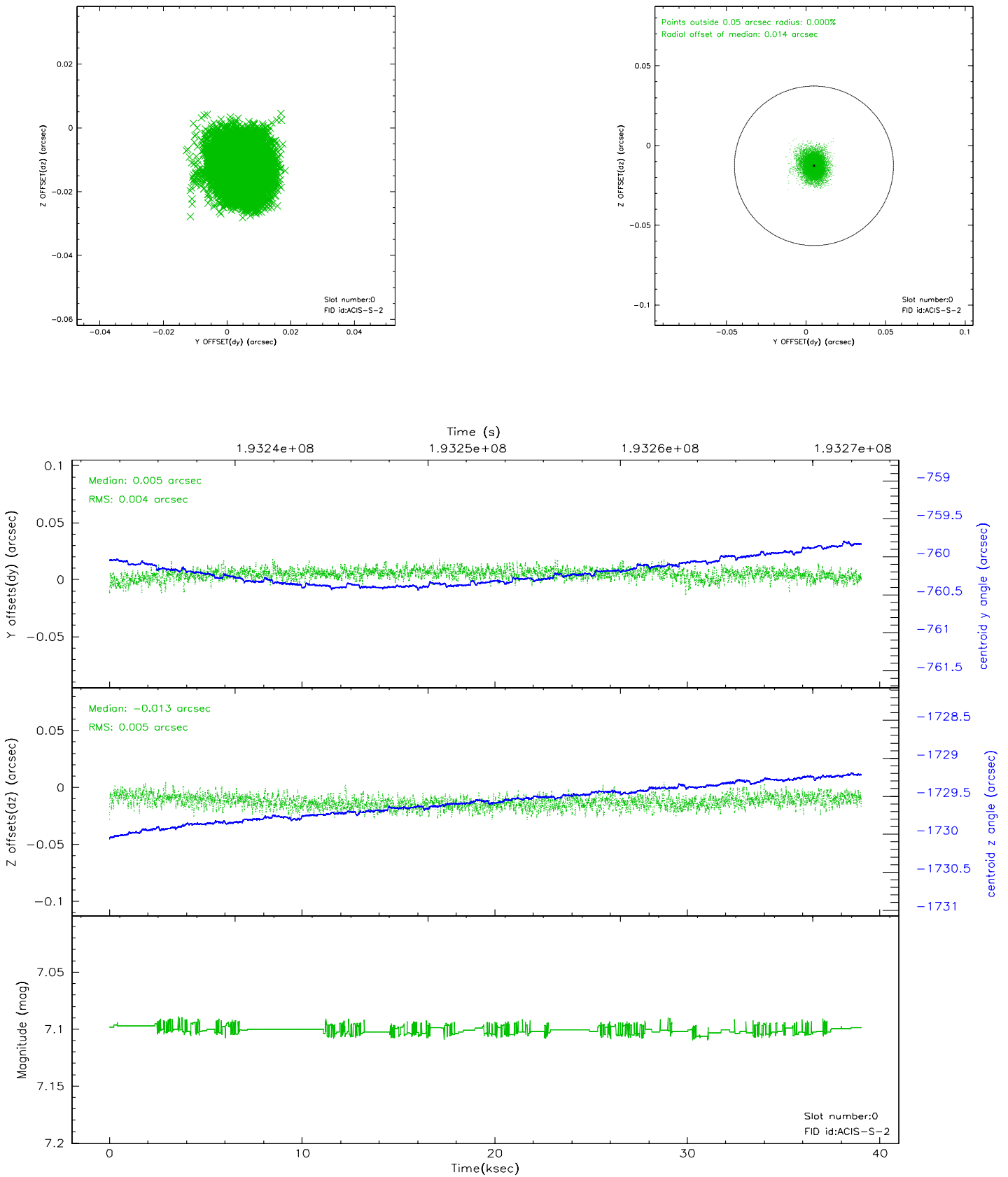


2.4.5 Slot 7

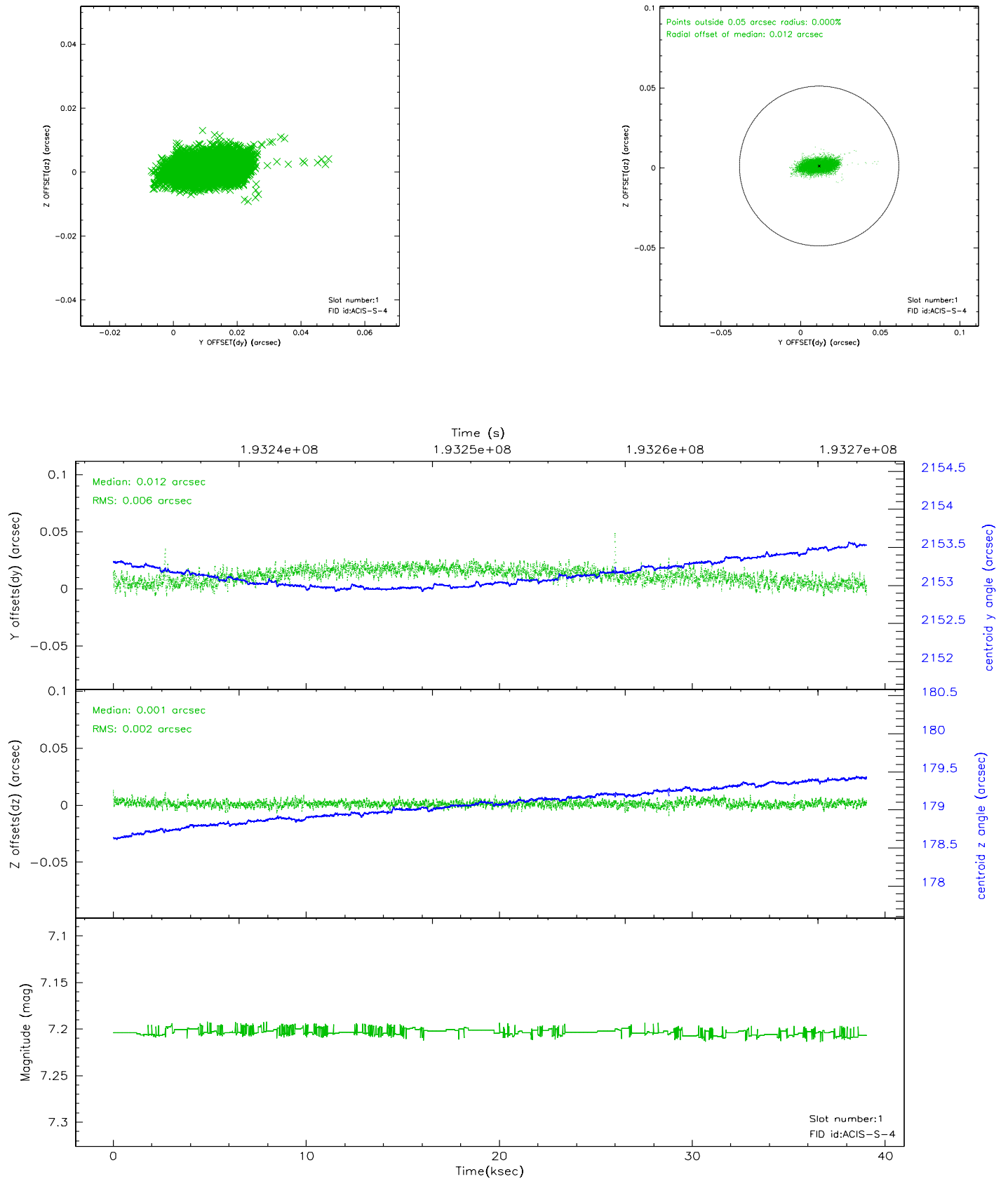


2.5 FID Slots

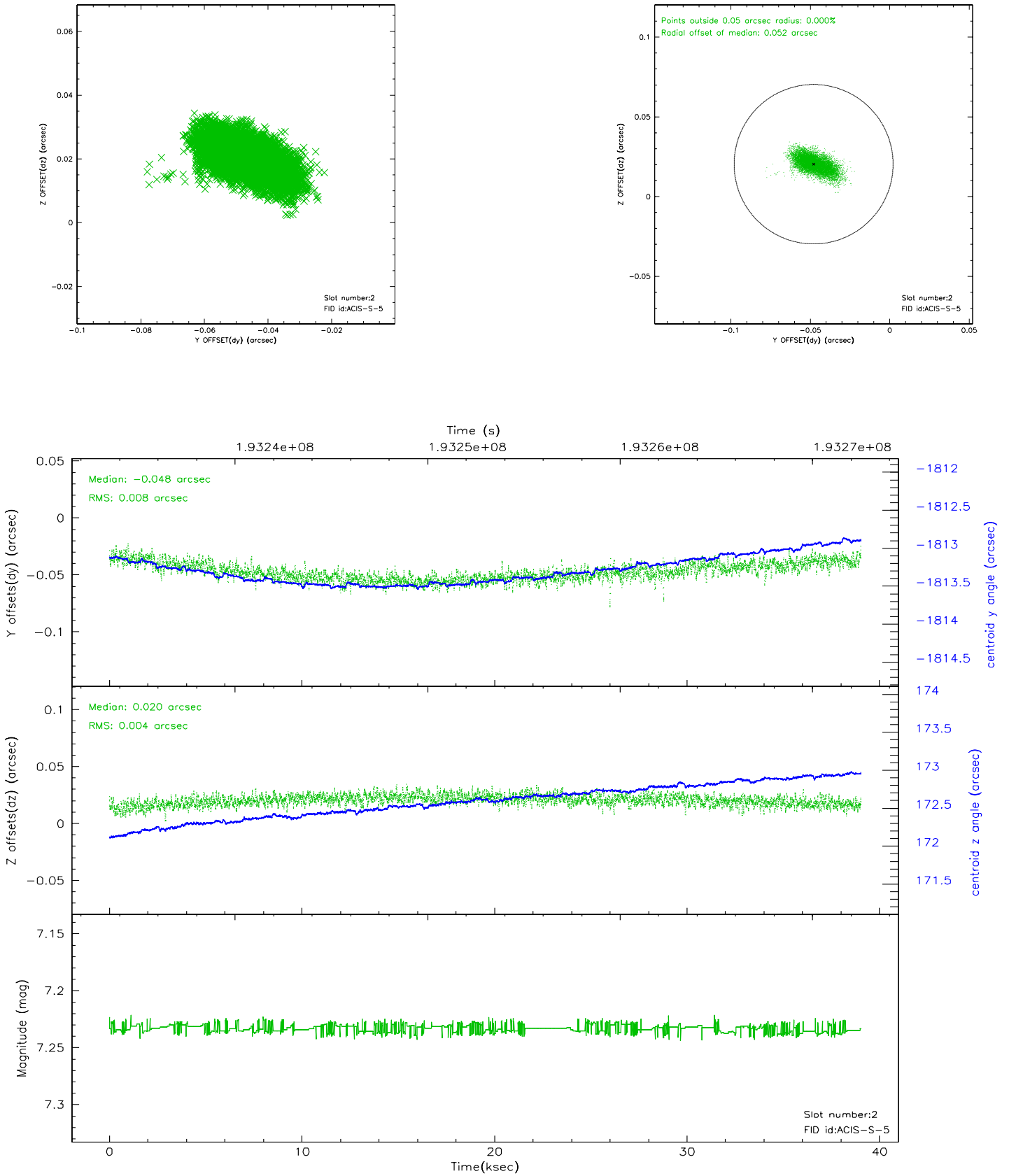
2.5.1 Slot 0



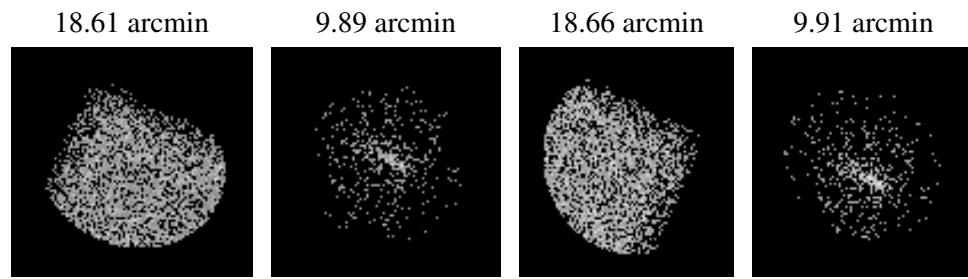
2.5.2 Slot 1



2.5.3 Slot 2



3 Point Sources



A Summary

A.1 Status

V&V Scientist	Jen Lauer
V&V Date (YYYY-MM-DD)	2006.06.04
V&V Edition	1
V&V Disposition and Status	OK
V&V Charge Time	39.0335998

A.2 Comments

The temperature is above calibration limits for the last ten ksec of the observation.