

# V&V Reference Report

## L2 ASCDS Version : 7.6.7

Observation 4988 - L2 Version 002  
Chandra X-Ray Center

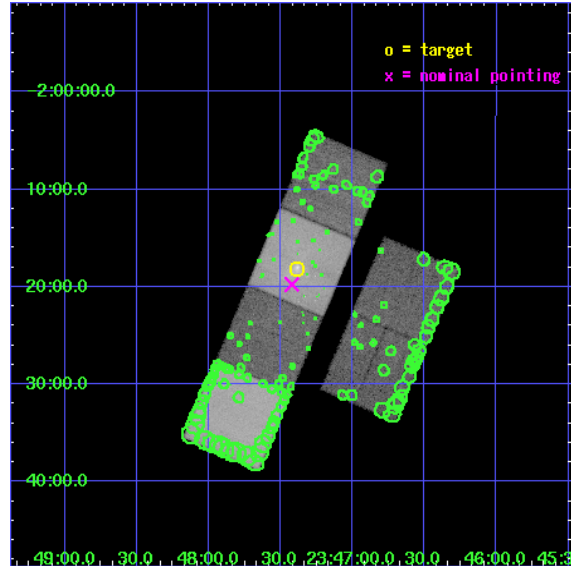
L2 Processing Date: Feb 17 2006

## Contents

<b>1</b>	<b>Front</b>	<b>2</b>
<b>2</b>	<b>OBI</b>	<b>3</b>
2.1	OBI . . . . .	3
2.1.1	Images . . . . .	3
2.1.2	Bias . . . . .	3
2.1.3	Parameters . . . . .	4
2.1.4	Events . . . . .	4
2.2	Compared Parameters . . . . .	5
2.3	Aspect . . . . .	6
2.4	Star Slots . . . . .	9
2.4.1	Slot 3 . . . . .	9
2.4.2	Slot 4 . . . . .	10
2.4.3	Slot 5 . . . . .	11
2.4.4	Slot 6 . . . . .	12
2.4.5	Slot 7 . . . . .	13
2.5	FID Slots . . . . .	14
2.5.1	Slot 0 . . . . .	14
2.5.2	Slot 1 . . . . .	15
2.5.3	Slot 2 . . . . .	16
<b>3</b>	<b>Point Sources</b>	<b>17</b>
<b>A</b>	<b>Summary</b>	<b>18</b>
A.1	Status . . . . .	18
A.2	Comments . . . . .	18

# 1 Front

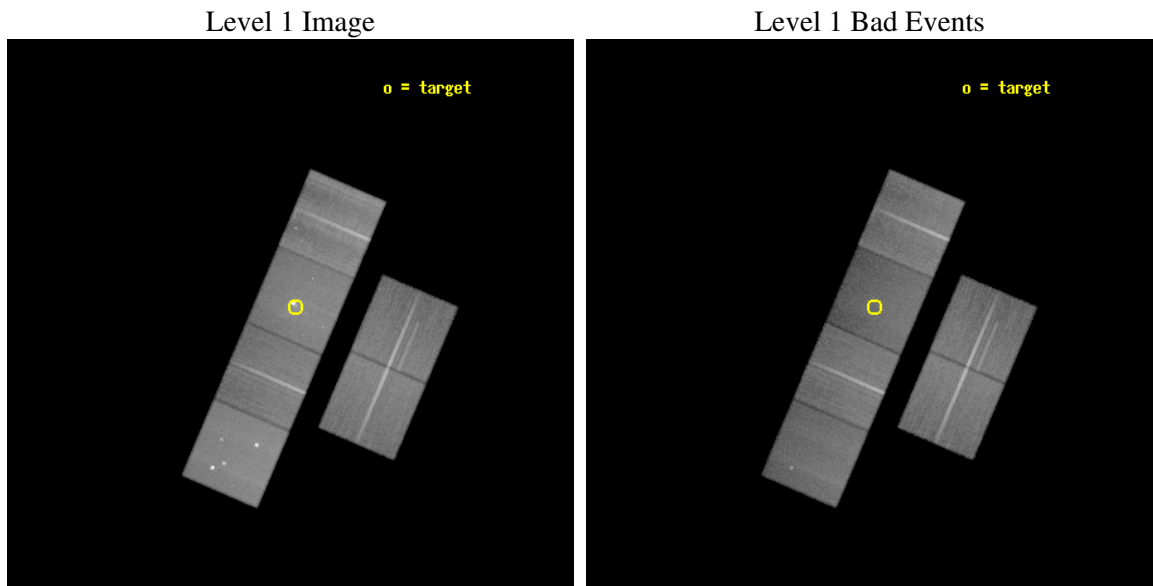
seq_num	800431
obs_id	4988
title	X-Ray Bright Hickson Compact Groups: the Origin and Distribution of Metallicity and the Regulation of Cooling Flows
observer	DR. JAN VRTILEK
object	HCG 97
dtcycle	0
cycle	P
ra_targ	356.845833
dec_targ	-2.301944
ra_nom	356.85561259174
dec_nom	-2.3293046121611
roll_nom	293.10873603119
revision	2
ontime	58134.399783432
livetime	57398.267009042
ontime2	58131.158823162
ontime3	58127.917842865
ontime5	58134.399783432
ontime6	58131.158942729
ontime7	58134.399783432
ontime8	58121.435962081
l2events	589161



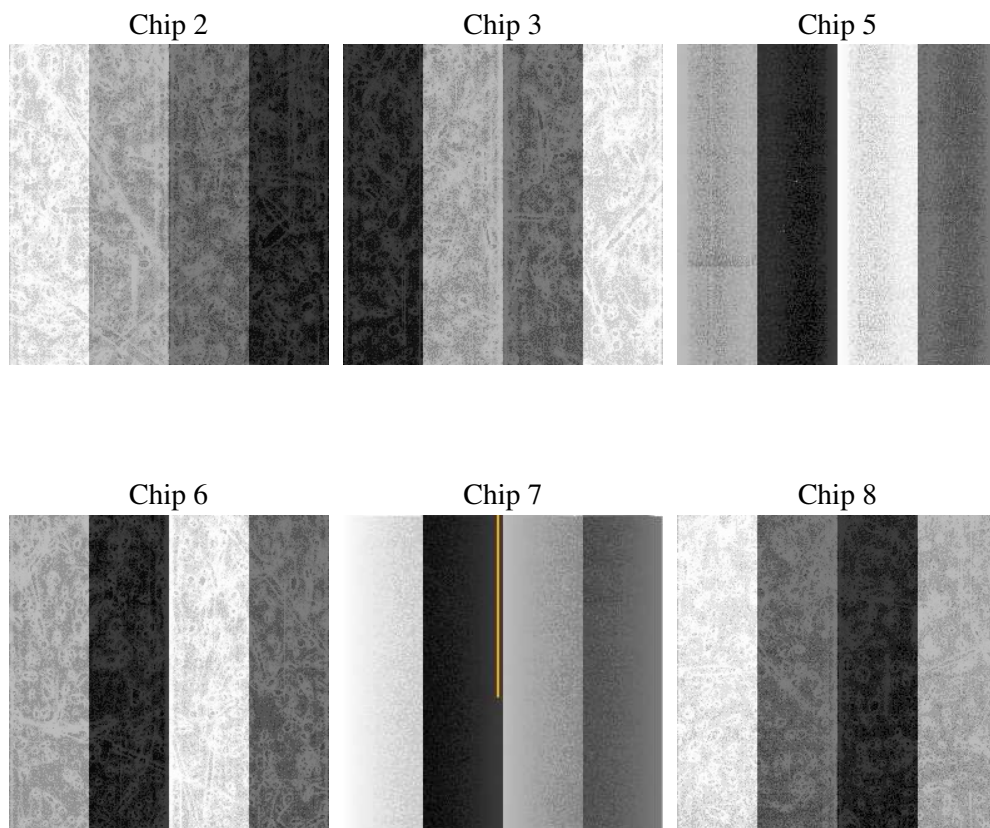
## 2 OBI

### 2.1 OBI

#### 2.1.1 Images



#### 2.1.2 Bias



### 2.1.3 Parameters

obi_num	0
ascdsver	7.6.7
caldsver	3.2.1
date	2006-02-17T05:03:05
revision	2

sched_exp_time	58000.000000
ontime	58603.78237322
ontime2	58600.541383028
ontime3	58597.300402731
ontime5	58603.78237322
ontime6	58600.541532516
ontime7	58603.78237322
ontime8	58590.818551868
l1events	2585825

### 2.1.4 Events

	ccd 2	ccd 3	ccd 5	ccd 6	ccd 7	ccd 8
level 1 events	400943	362903	511453	383915	446356	480255
rejected events	358419	322759	253842	335749	227307	353776
rejected %	89%	88%	49%	87%	50%	73%

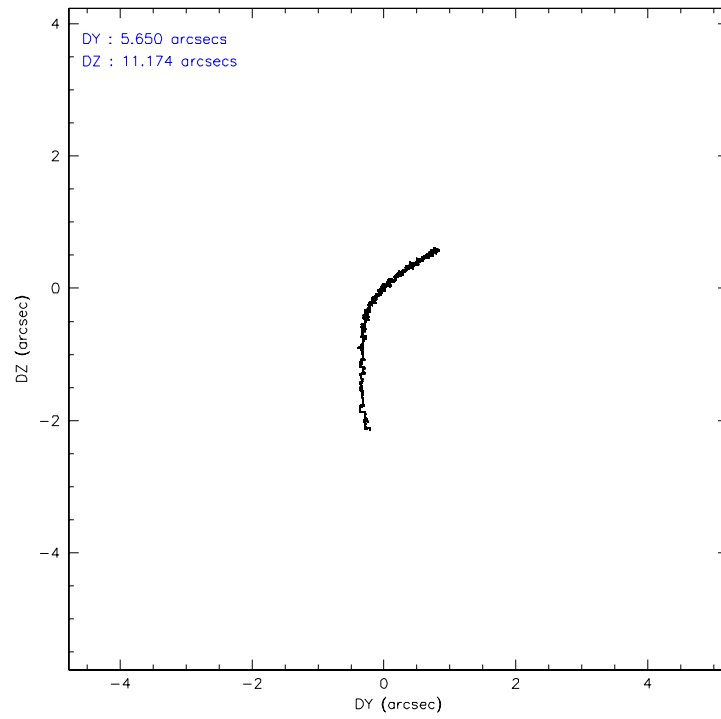
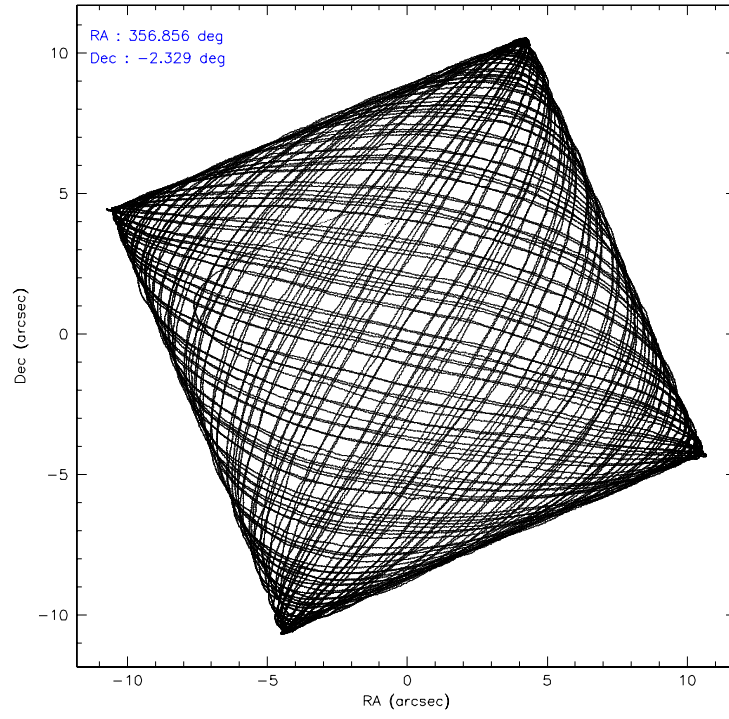
	ccd 2	ccd 3	ccd 5	ccd 6	ccd 7	ccd 8
grade 0 events	16294	15448	30678	19496	35649	40536
	4%	4%	5%	5%	7%	8%
grade 1 events	225	184	1107	196	236	384
	0%	0%	0%	0%	0%	0%
grade 2 events	9596	8126	79150	9718	50914	27103
	2%	2%	15%	2%	11%	5%
grade 3 events	4334	4376	6674	4689	12960	13834
	1%	1%	1%	1%	2%	2%
grade 4 events	4352	4360	6298	4670	12660	12630
	1%	1%	1%	1%	2%	2%
grade 5 events	12431	13878	26077	14314	30692	20247
	3%	3%	5%	3%	6%	4%
grade 6 events	8212	8112	136826	9911	108368	33060
	2%	2%	26%	2%	24%	6%
grade 7 events	345499	308419	224643	320921	194877	332461
	86%	84%	43%	83%	43%	69%

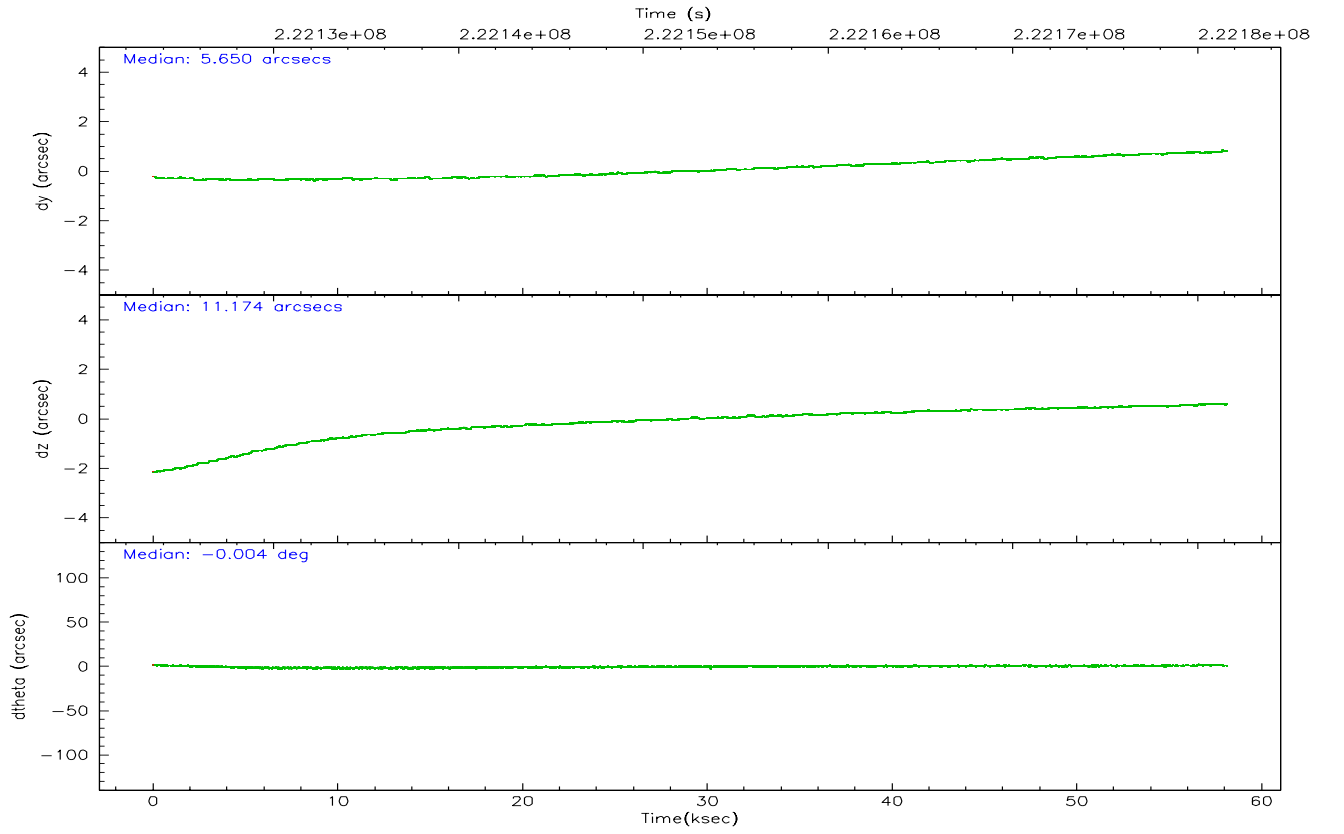
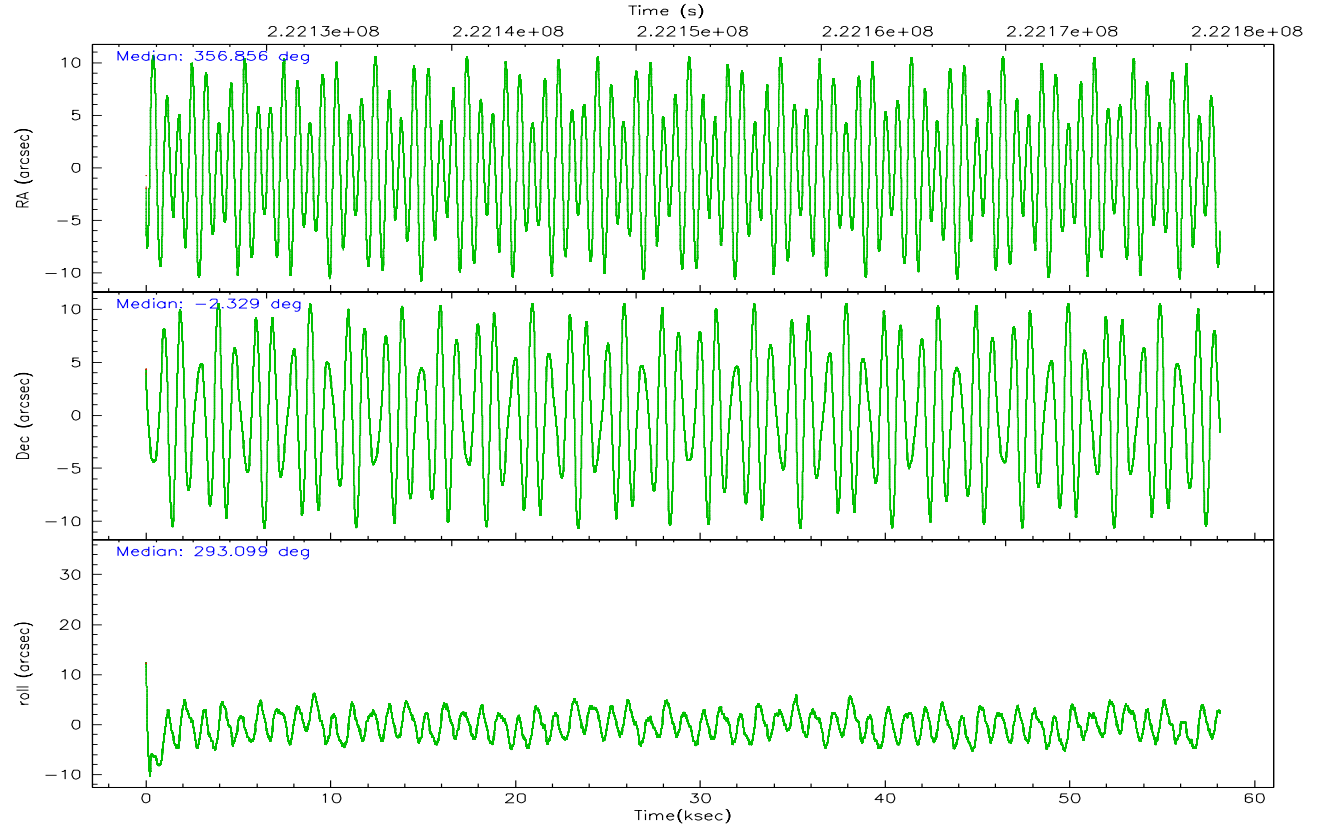


## 2.2 Compared Parameters

Parameter	Planned	Actual	Parameter	Planned	Actual
Instrument	ACIS	ACIS	Obspar format version number	6	6
Detector	ACIS-235678	ACIS-235678	Obspar file type	PREDICTED	ACTUAL
Grating	NONE	NONE	Obspar update status	NONE	UPDATED
Data mode	VFAINT	VFAINT	On-chip summing requested	N	N
Observation mode	POINTING	POINTING	Subarray requested	NONE	NONE
Pointing RA	356.833612	356.8556125917415	Alternating exposures requested	N	N
Pointing Dec	-2.313274	-2.329304612161088	Primary exposure time	0.000000	3.2
Pointing Roll	292.951218	293.1087360311921			
SIM focus pos (mm)	-0.684267	-0.6828225247311905			
SIM defocus (mm)	0	0.001444936568705701			
SIM translation stage pos (mm)	-190.132523	-190.1400660498719			
SIM translation stage offset (mm)	0	0.00754346686406393			
Observation start time	222123604.184000	222122320.46599			
Observation start date	2005-01-14T20:59:00	2005-01-14T20:38:40			
Observation end time	222181604.184000	222182658.63121			
Observation end date	2005-01-15T13:05:40	2005-01-15T13:24:18			
Read mode	TIMED	TIMED			

## 2.3 Aspect



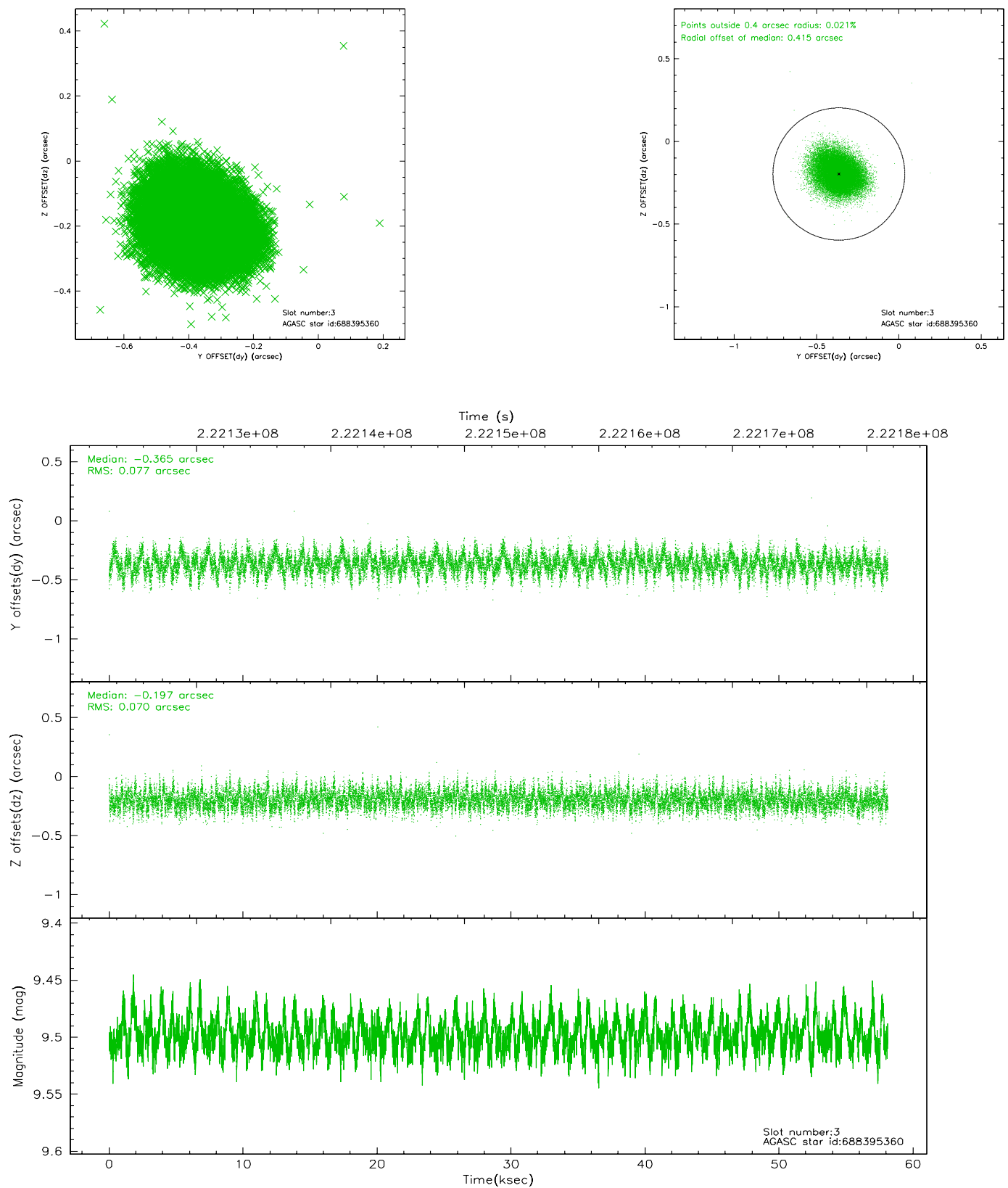


### Slot Statistics

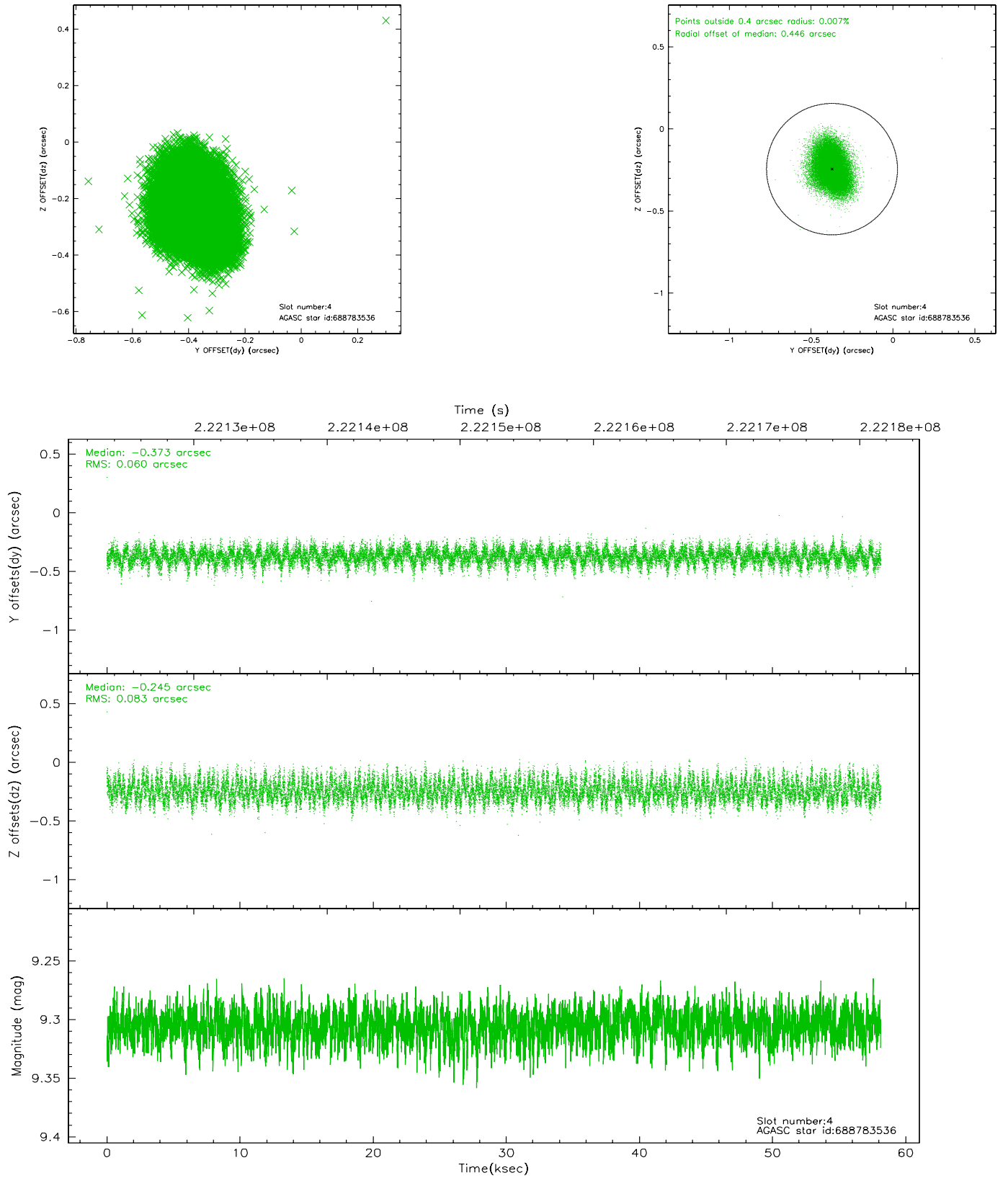
slot	status	id	mag	n_pts	med_dy	med_dz	dr1	dr2	ra	dec	mean_y	mean_z
0	FID	ACIS-S-2	7.10	14182	-0.051	-0.003	0.014	0.023	0.000000	0.000000	-758.49	-1732.27
1	FID	ACIS-S-4	7.21	14182	0.055	0.025	0.019	0.029	0.000000	0.000000	2154.90	176.31
2	FID	ACIS-S-5	7.23	14182	-0.036	-0.014	0.012	0.022	0.000000	0.000000	-1811.38	169.86
3	GUIDE	688395360	9.50	28342	-0.365	-0.197	0.111	0.180	356.351108	-1.945464	-1895.82	-1082.83
4	GUIDE	688783536	9.31	28337	-0.373	-0.245	0.110	0.175	356.344501	-2.620614	333.81	-2051.69
5	GUIDE	688790192	9.24	28353	-0.144	-0.219	0.113	0.179	356.616722	-3.006211	1993.67	-1690.72
6	GUIDE	688783912	9.90	28330	0.872	0.265	0.214	0.333	356.937787	-2.750686	1597.50	-268.55
7	GUIDE	688914640	9.83	28332	-0.008	0.385	0.120	0.198	357.676511	-2.642513	2274.58	2329.64

## 2.4 Star Slots

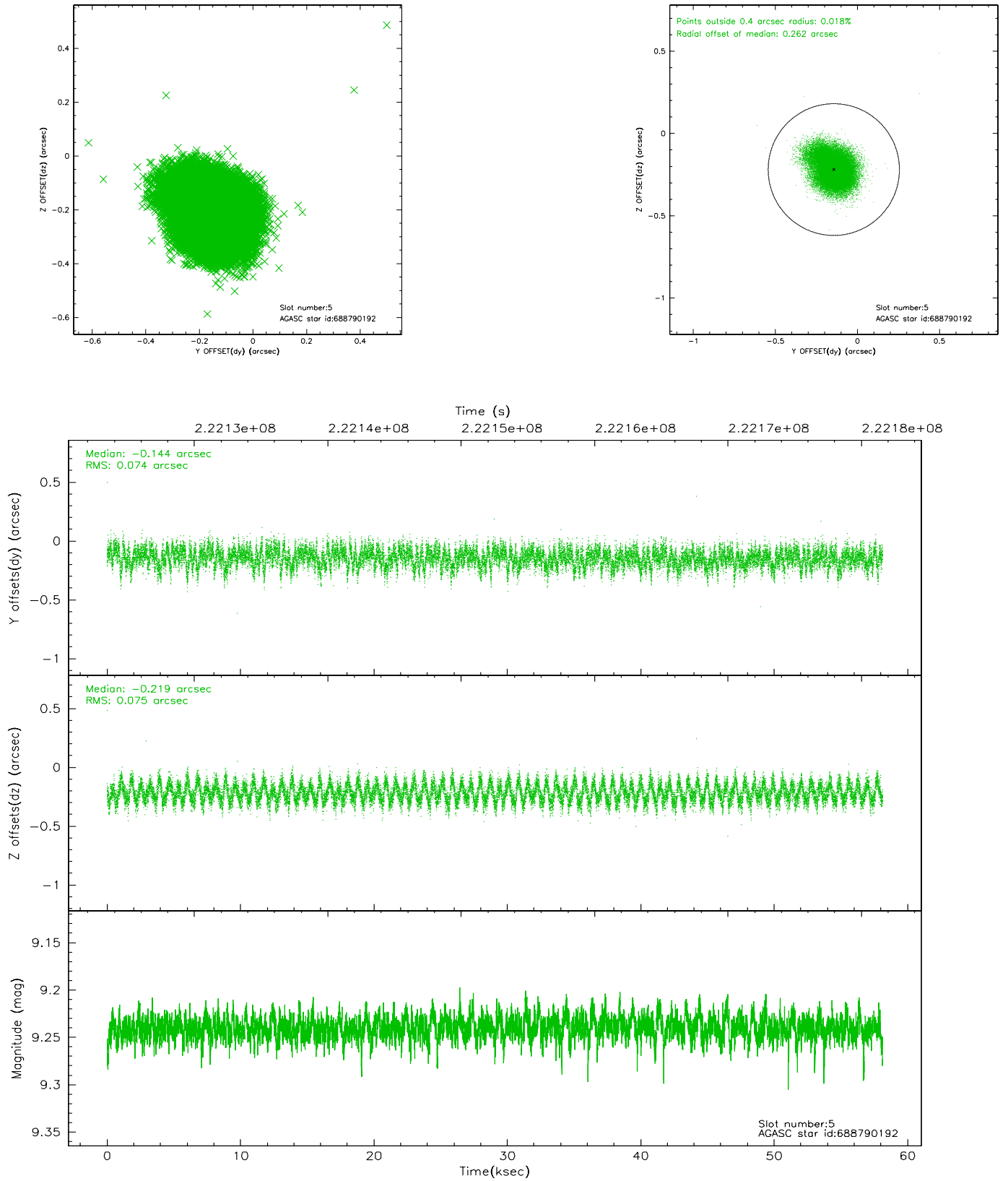
### 2.4.1 Slot 3



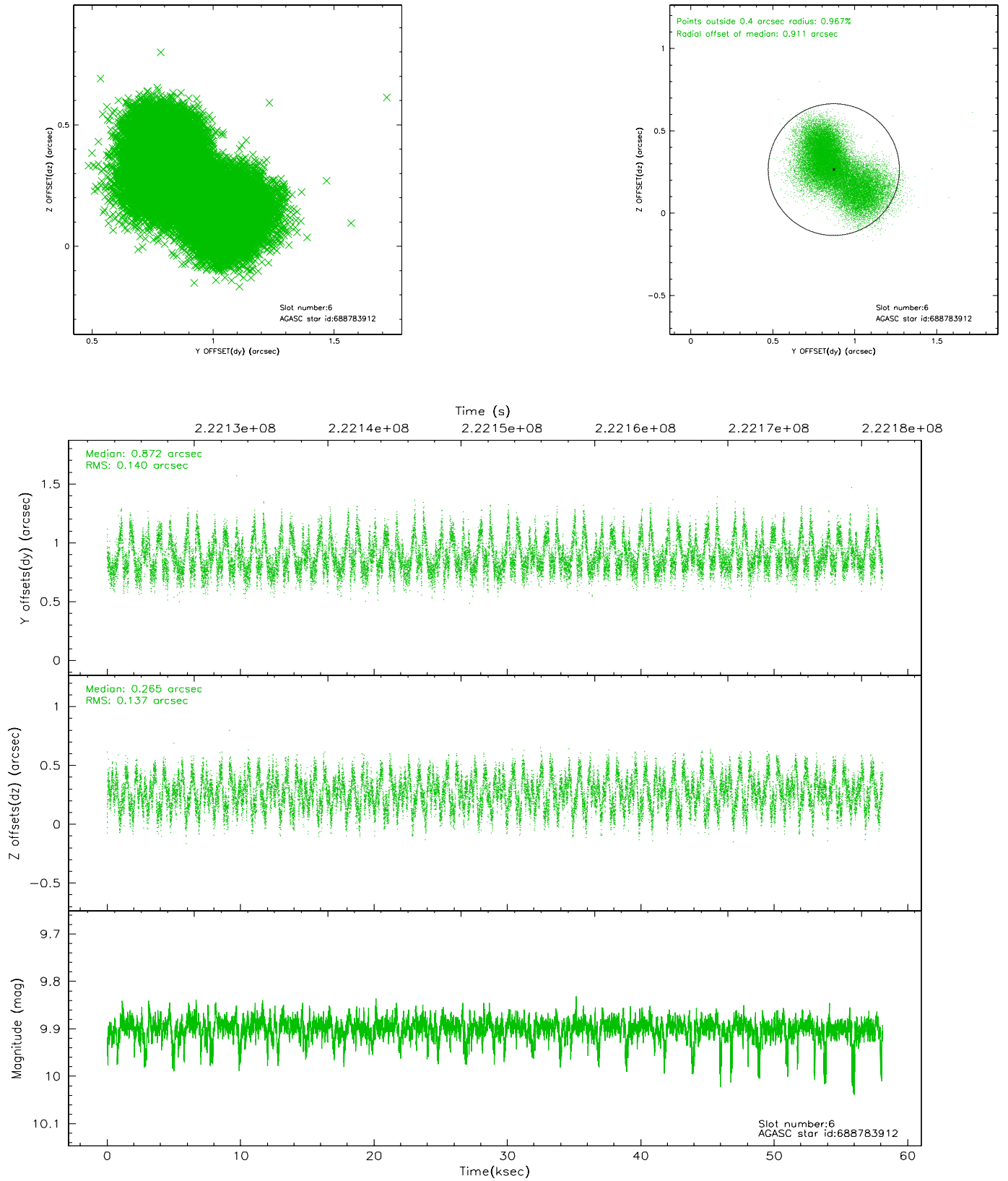
## 2.4.2 Slot 4



### 2.4.3 Slot 5

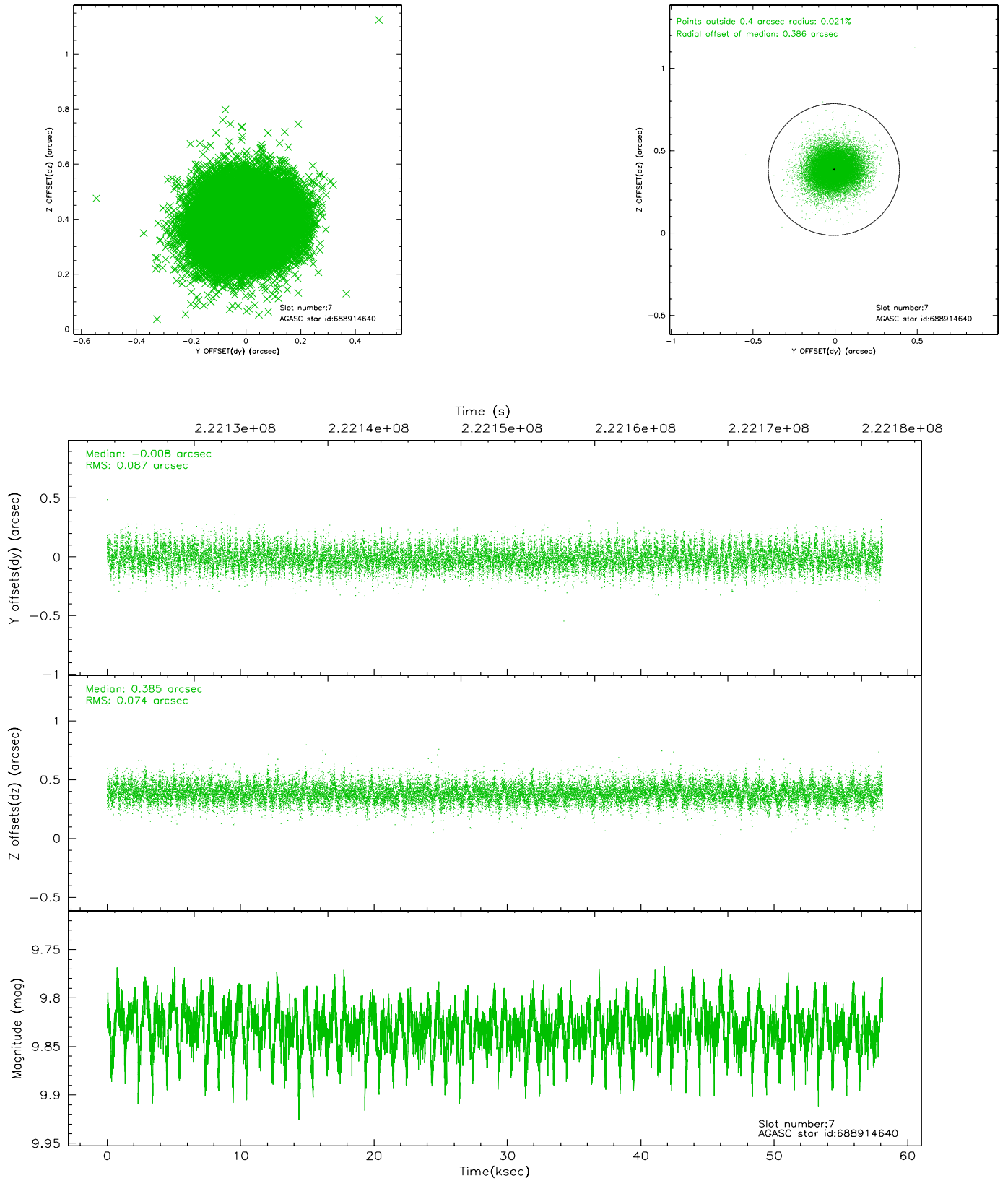


## 2.4.4 Slot 6



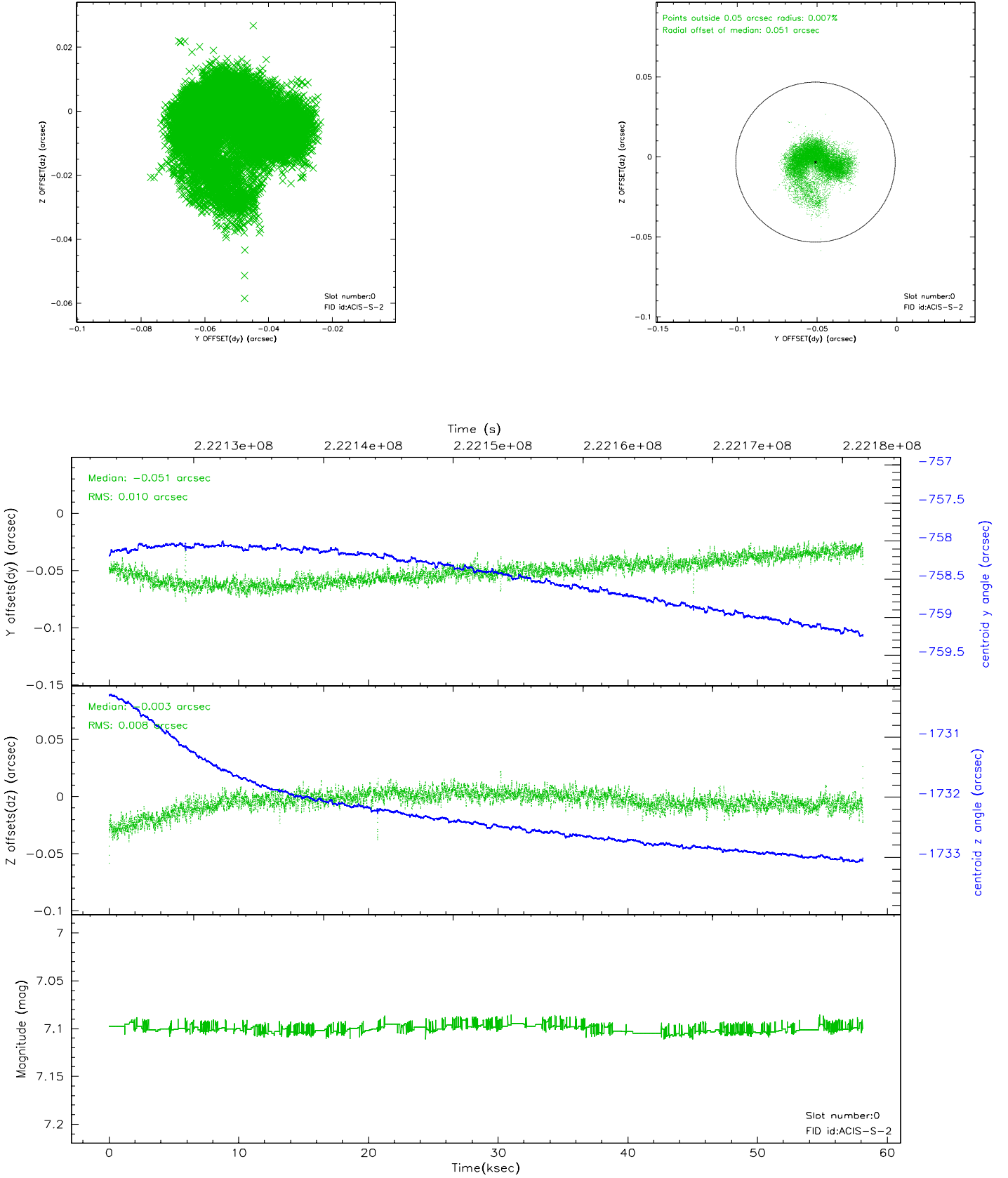


## 2.4.5 Slot 7

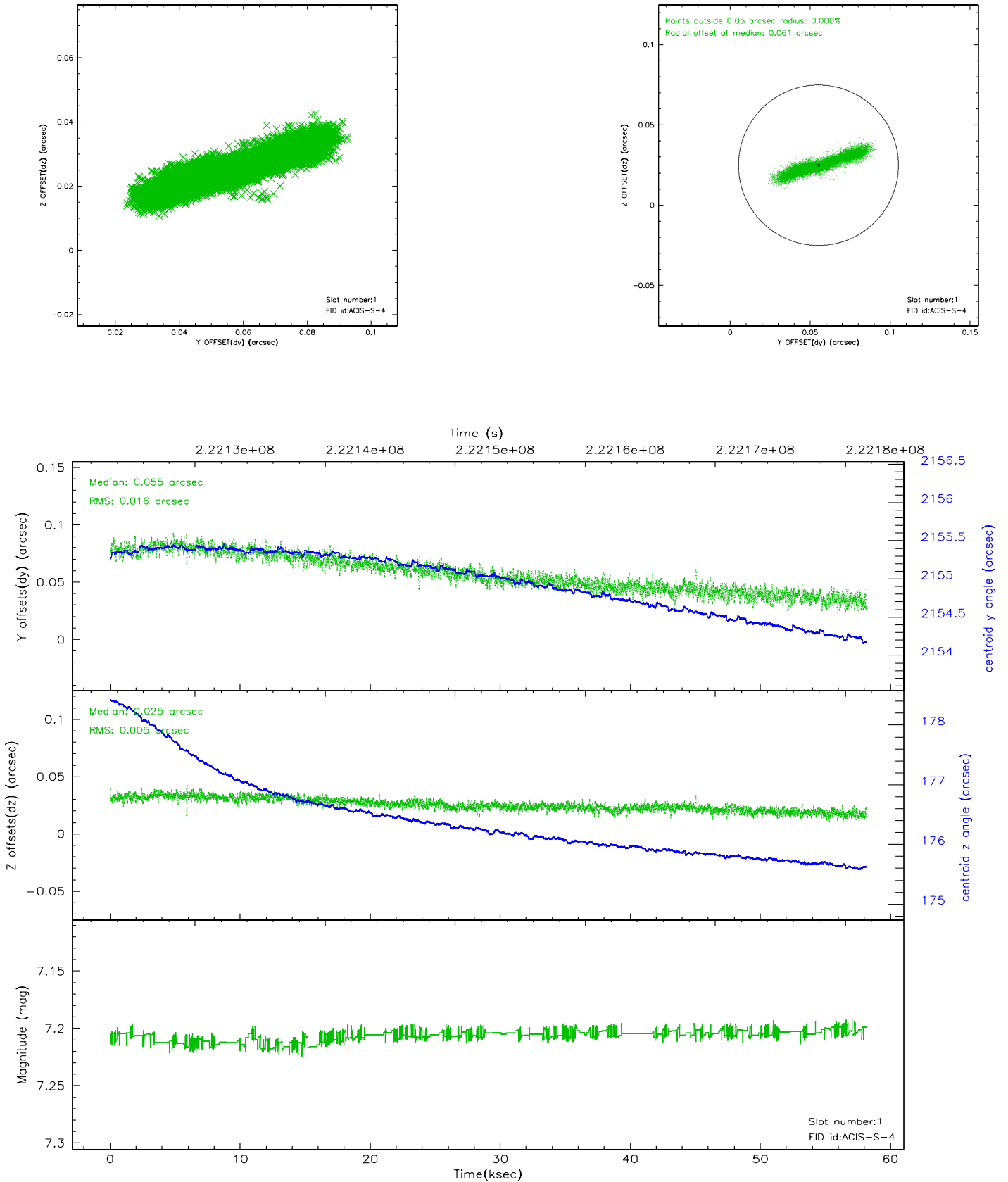


## 2.5 FID Slots

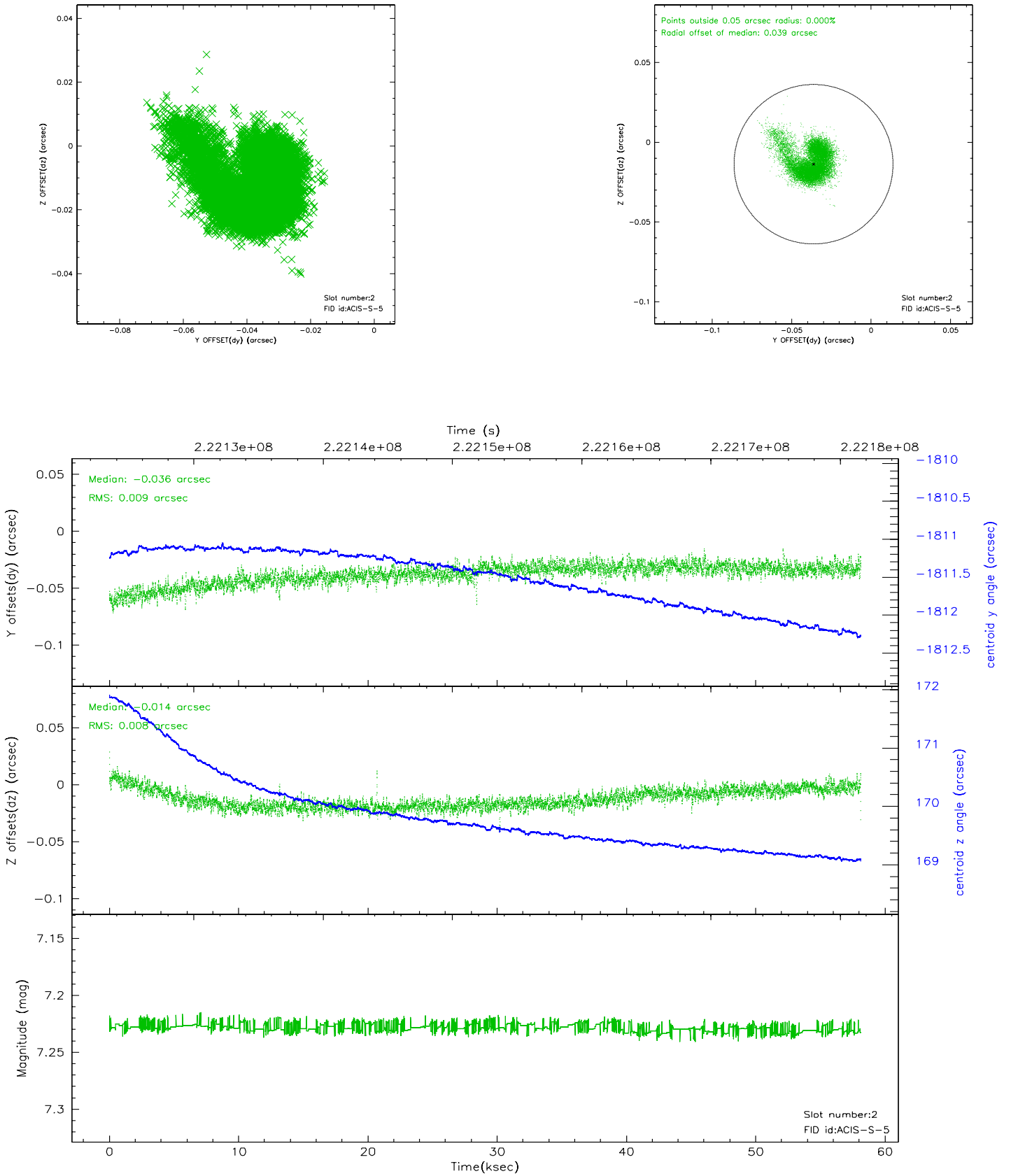
### 2.5.1 Slot 0



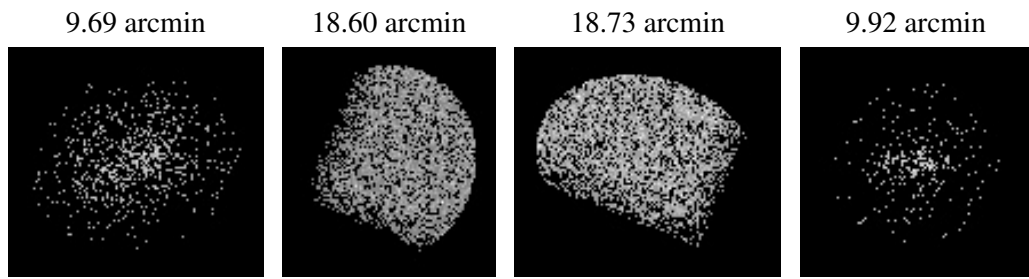
## 2.5.2 Slot 1



### 2.5.3 Slot 2



### 3 Point Sources



## A Summary

### A.1 Status

V&V Scientist	Jen Lauer
V&V Date (YYYY-MM-DD)	2006.03.21
V&V Edition	3
V&V Disposition and Status	OK
V&V Charge Time	58.134

### A.2 Comments

Please reprocess without slot 6.