

V&V Reference Report

L2 ASCDS Version : 8.5

Observation 4984 - L2 Version 3
Chandra X-Ray Center

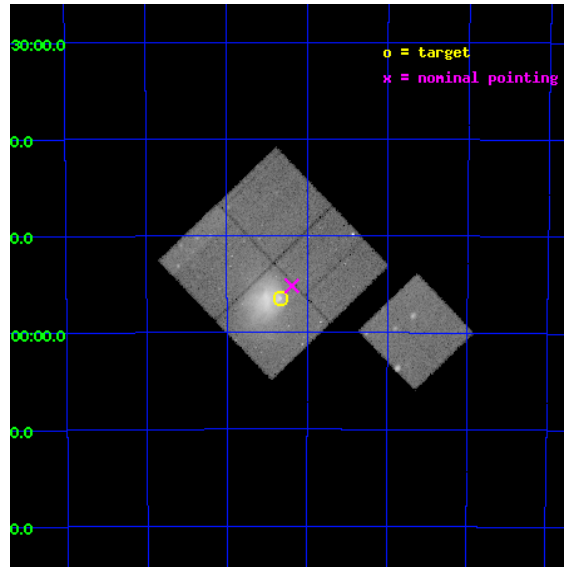
L2 Processing Date : Dec 7 2012

Contents

1	Front	2
2	OBI	3
2.1	OBI	3
2.1.1	Images	3
2.1.2	Bias	3
2.1.3	Parameters	4
2.1.4	Events	4
2.2	Compared Parameters	5
2.3	Aspect	6
2.4	Star Slots	9
2.4.1	Slot 3	9
2.4.2	Slot 4	10
2.4.3	Slot 5	11
2.4.4	Slot 6	12
2.4.5	Slot 7	13
2.5	FID Slots	14
2.5.1	Slot 0	14
2.5.2	Slot 1	15
2.5.3	Slot 2	16
A	Summary	17
A.1	Status	17
A.2	Comments	17

1 Front

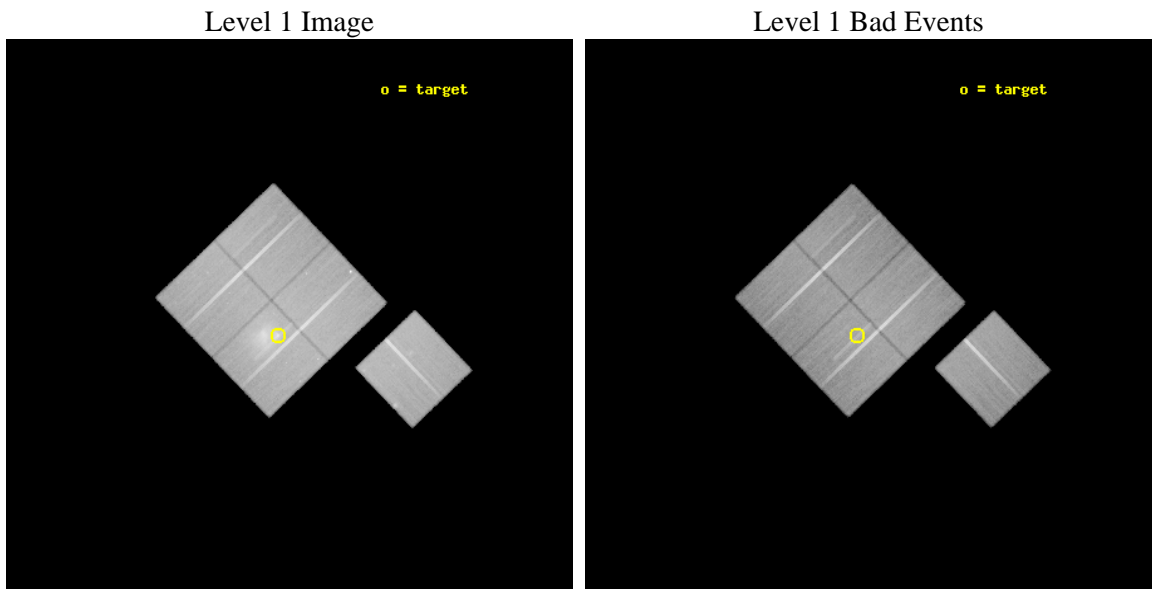
seq_num	800429	Sequence number
obs_id	4984	Observation id
title	THE MOST INTERESTING CLUSTER IN THE UNIVERSE	Proposal title
observer	Dr Maxim Markevitch	Principal investigator
object	1E0657-56	Source name
dtcycle	0	
cycle	P	events from which exps? Prim/Second/Both
ra_targ	104.5827	Observer's specified target RA [deg]
dec_targ	-55.9415	Observer's specified target Dec [deg]
ra_nom	104.54732261484	Nominal RA [deg]
dec_nom	-55.919856359201	Nominal Dec [deg]
roll_nom	136.17937691736	Nominal Roll [deg]
revision	3	Processing version of data
ontime	77124.81789124	Sum of GTIs [s]
livetime	76117.125367026	Livetime [s]
ontime0	77118.535960823	Sum of GTIs [s]
ontime1	77131.099851668	Sum of GTIs [s]
ontime2	77118.535911024	Sum of GTIs [s]
ontime3	77124.81789124	Sum of GTIs [s]
ontime6	77127.958891451	Sum of GTIs [s]
l2events	319252	Number of level 2 events



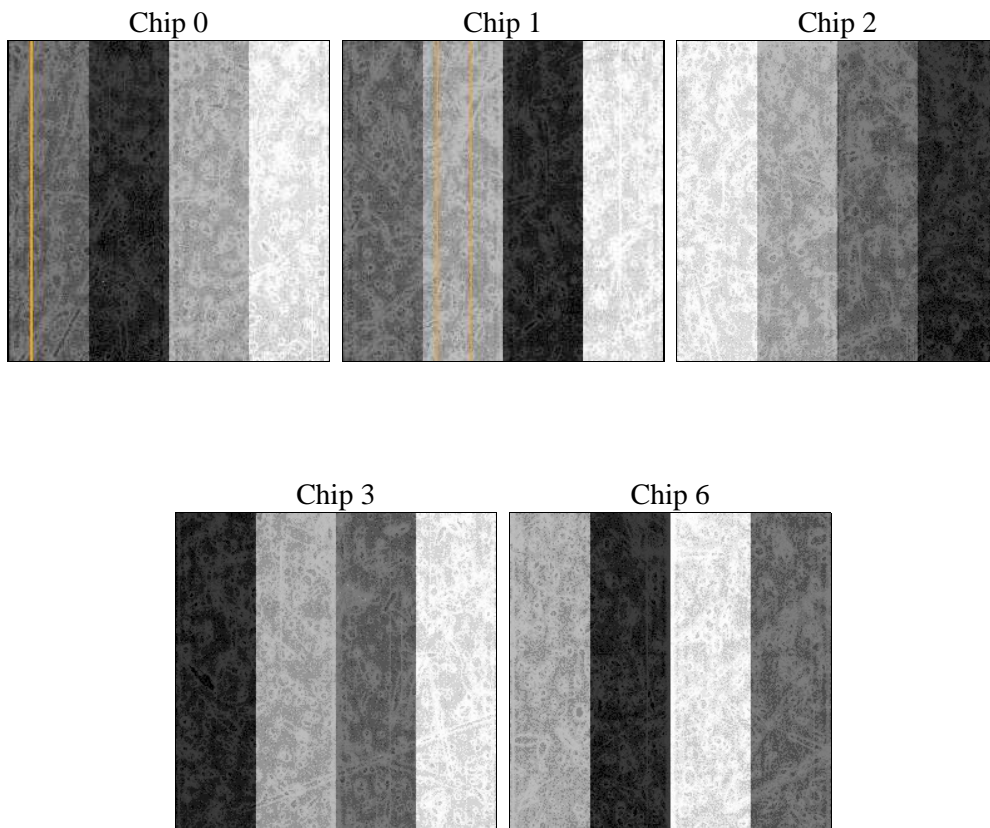
2 OBI

2.1 OBI

2.1.1 Images



2.1.2 Bias



2.1.3 Parameters

obi_num	1	Obi number	sched_exp_time	77000.000000	[s] Scheduled observation exposure time
ascdsver	8.5	Processing system revision	ontime	77124.81789124	Sum of GTIs [s]
caldbver	4.5.4	 	ontime0	77118.535960823	Sum of GTIs [s]
date	2012-12-07T20:39:11	Date and time of file creation	ontime1	77131.099851668	Sum of GTIs [s]
revision	3	Processing version of data	ontime2	77118.535911024	Sum of GTIs [s]
			ontime3	77124.81789124	Sum of GTIs [s]
			ontime6	77127.958891451	Sum of GTIs [s]
			l1events	2540156	Number of level 1 events

2.1.4 Events

	ccd 0	ccd 1	ccd 2	ccd 3	ccd 6
level 1 events	453044	464789	517030	603795	501498
rejected events	405593	405665	465848	450634	447921
rejected %	89%	87%	90%	74%	89%

	ccd 0	ccd 1	ccd 2	ccd 3	ccd 6
grade 0 events	16655	23866	20499	103399	20804
	3%	5%	3%	17%	4%
grade 1 events	221	233	242	736	241
	0%	0%	0%	0%	0%
grade 2 events	11185	12263	11427	20726	10975
	2%	2%	2%	3%	2%
grade 3 events	5721	6381	5321	8870	5796
	1%	1%	1%	1%	1%
grade 4 events	5169	6140	5403	8591	5699
	1%	1%	1%	1%	1%
grade 5 events	16848	18326	16081	19398	19082
	3%	3%	3%	3%	3%
grade 6 events	9047	10887	8845	12142	10637
	1%	2%	1%	2%	2%
grade 7 events	388198	386693	449212	429933	428264
	85%	83%	86%	71%	85%

2.2 Compared Parameters

Parameter	Planned	Actual	Parameter	Planned	Actual
Instrument	ACIS	ACIS	Obspar format version number	7	7
Detector	ACIS-01236	ACIS-01236	Obspar file type	PREDICTED	ACTUAL
Grating	NONE	NONE	Obspar update status	NONE	UPDATED
Data mode	VFAINT	VFAINT	Number of optional ACIS chips dropped	0	0
Observation mode	POINTING	POINTING	On-chip summing requested	N	N
[deg] Pointing RA	104.594854	104.5473226148417	Subarray requested	NONE	NONE
[deg] Pointing Dec	-55.926296	-55.91985635920101	Alternating exposures requested	N	N
[deg] Pointing Roll	136.010067	136.1793769173621	[s] Primary exposure time	0.000000	3.1
[mm] SIM focus pos	-0.782348	-0.7809083437167272			
[mm] SIM defocus	0	0.001439871863259334			
[mm] SIM translation stage pos	-226.592463	-226.5875806612856			
[mm] SIM translation stage offset	-7	-7.004872341644045			
[s] Observation start time (MET)	209324863.184000	209323645.09232			
Observation start date	2004-08-19T17:46:39	2004-08-19T17:27:25			
[s] Observation end time (MET)	209401863.184000	209402554.72084			
Observation end date	2004-08-20T15:09:59	2004-08-20T15:22:34			
Read mode	TIMED	TIMED			

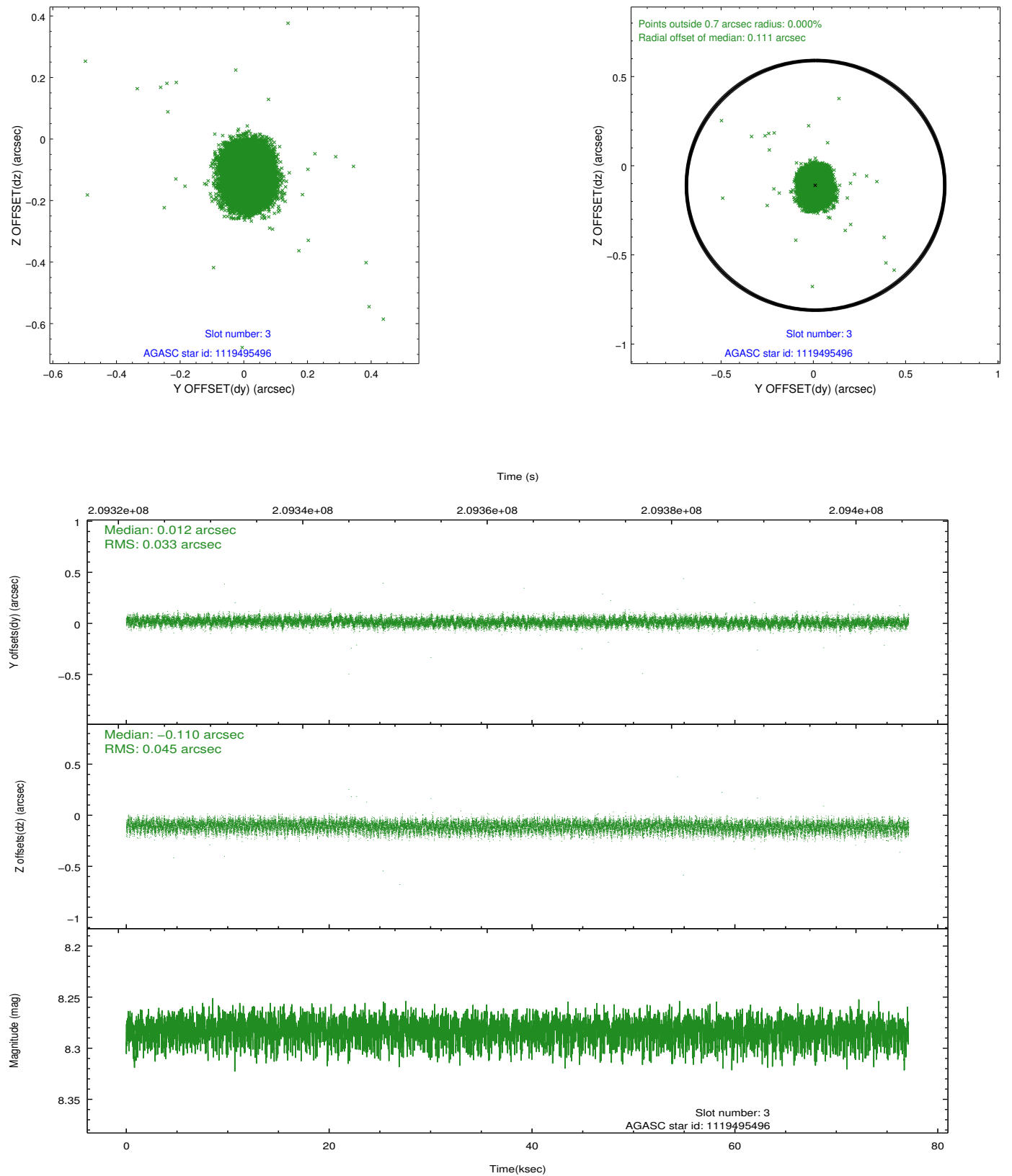
2.3 Aspect

Slot Statistics

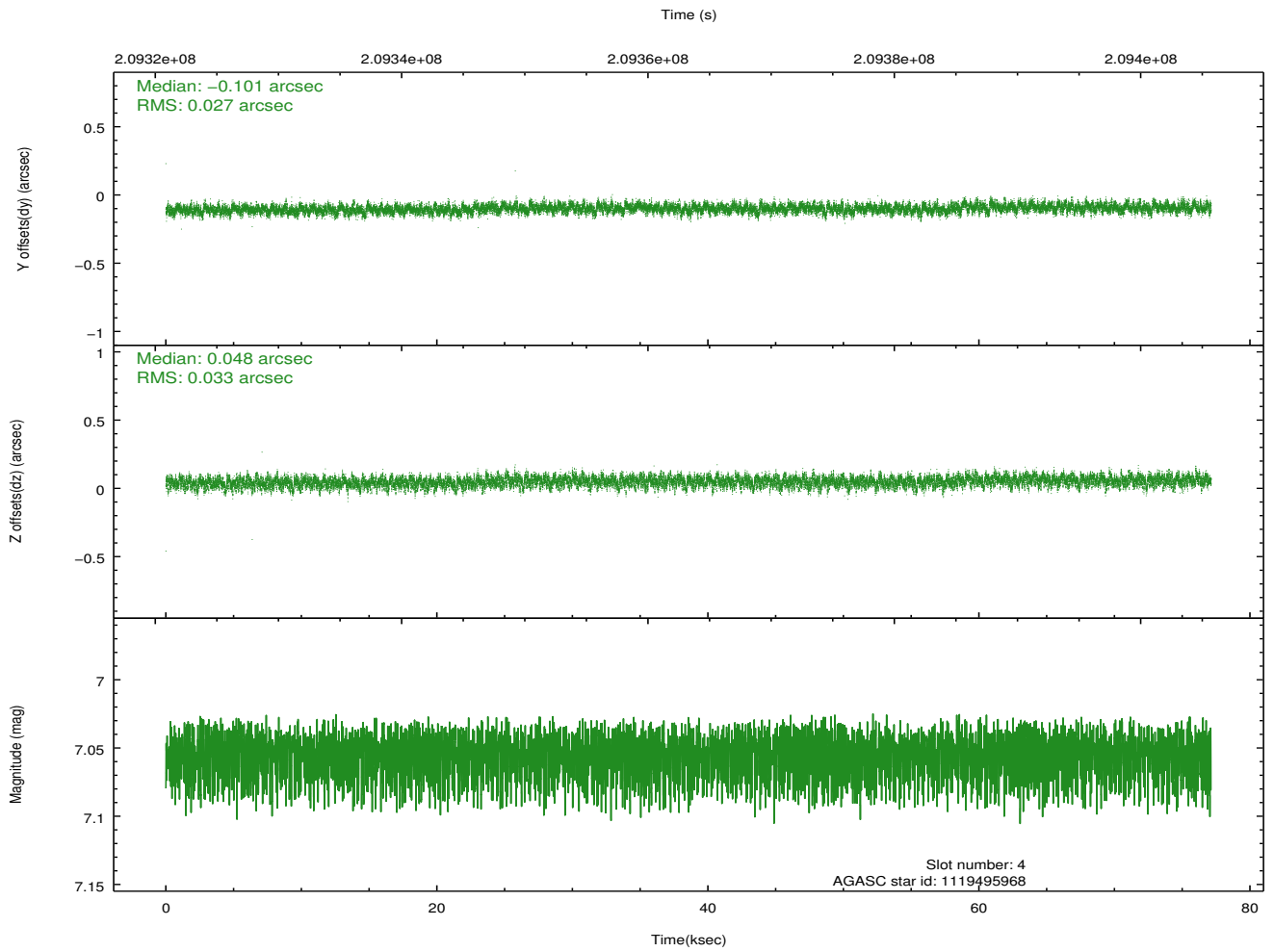
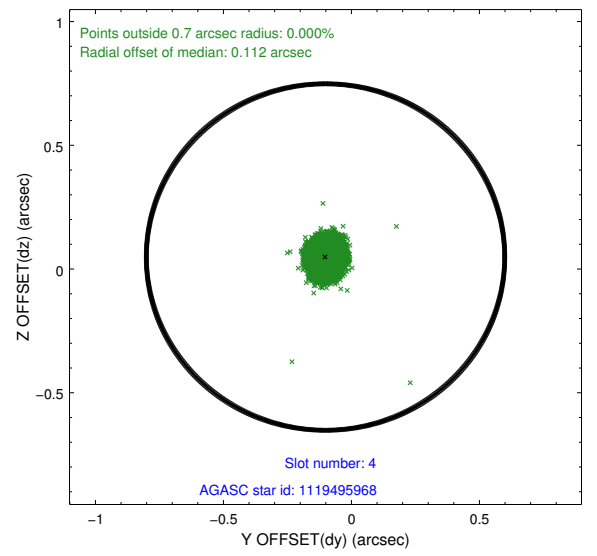
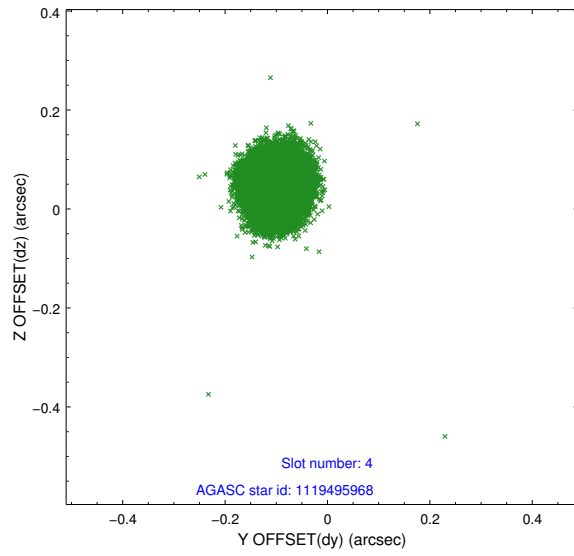
slot	status	id	mag	n_pts	med_dy	med_dz	dr1	dr2	ra	dec	mean_y	mean_z
0	FID	ACIS-I-1	7.23	18815	0.068	-0.070	0.026	0.038	0.000000	0.000000	934.67	-977.67
1	FID	ACIS-I-2	7.16	18811	-0.156	0.044	0.025	0.039	0.000000	0.000000	-760.04	-983.11
2	FID	ACIS-I-4	7.14	18812	-0.012	0.096	0.023	0.059	0.000000	0.000000	2154.05	923.26
3	GUIDE	1119495496	8.28	37621	0.012	-0.110	0.058	0.095	104.298364	-55.915101	457.56	387.51
4	GUIDE	1119495968	7.05	37625	-0.101	0.048	0.046	0.073	105.873528	-55.948238	-1925.53	-1716.19
5	GUIDE	1119496704	7.86	37618	0.139	0.077	0.059	0.095	104.368364	-55.667750	977.01	-349.40
6	GUIDE	1120026344	6.70	37558	-0.091	-0.071	0.059	0.105	104.651539	-56.394853	-1252.94	1135.40
7	GUIDE	1119500592	8.69	37620	0.038	0.056	0.088	0.142	105.814889	-55.642715	-1088.87	-2439.99

2.4 Star Slots

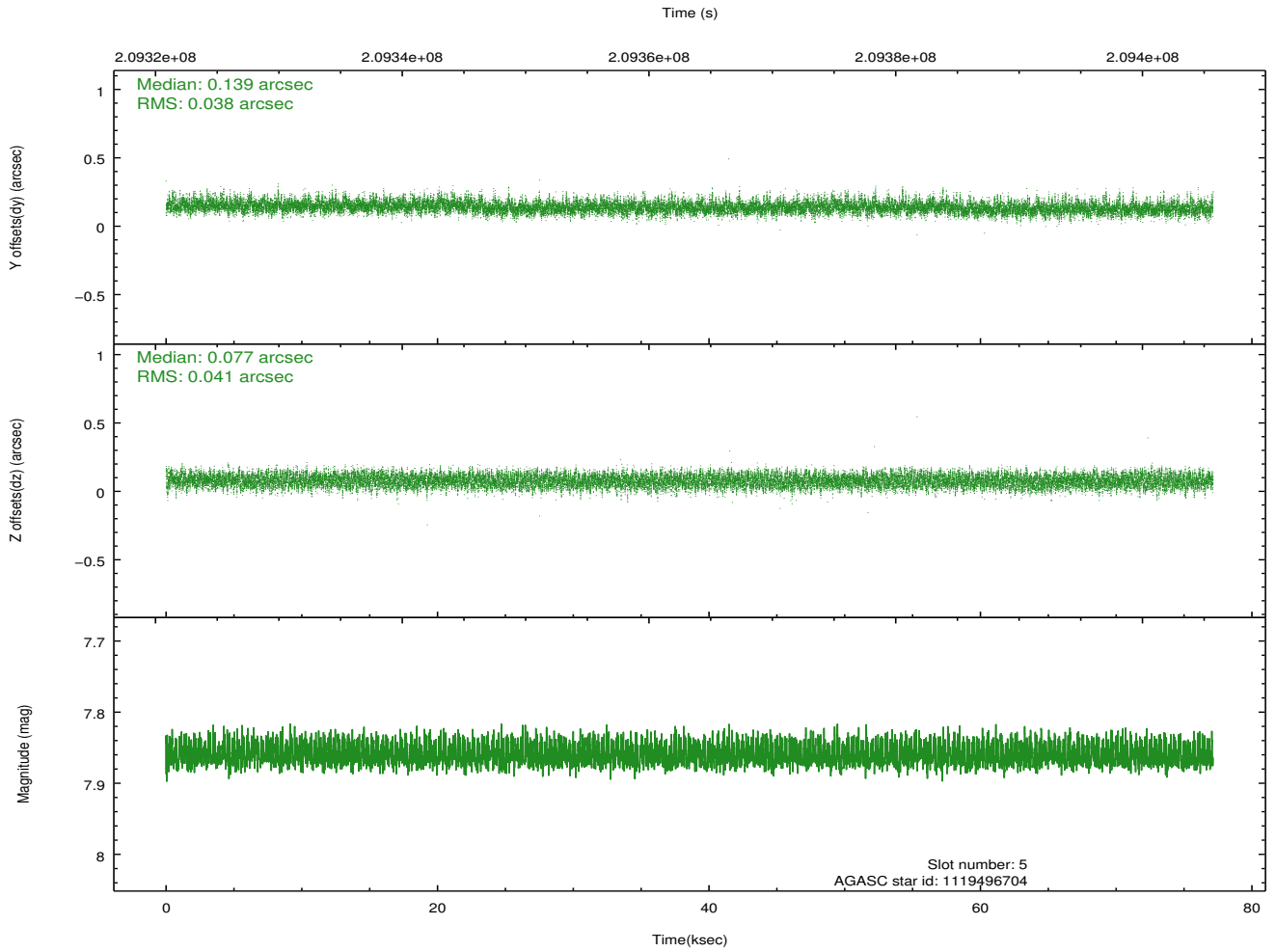
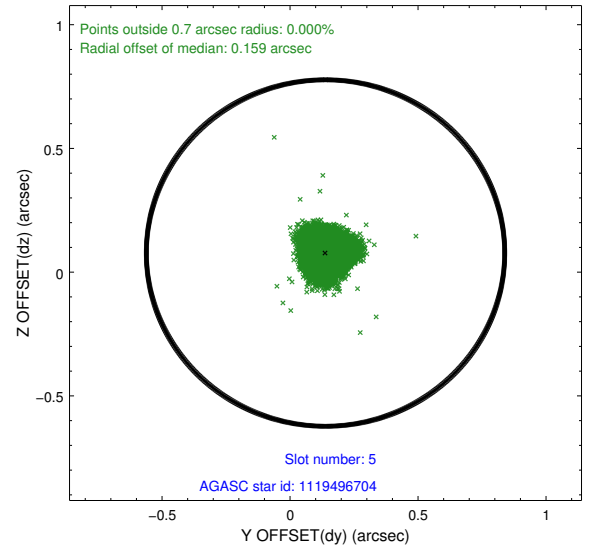
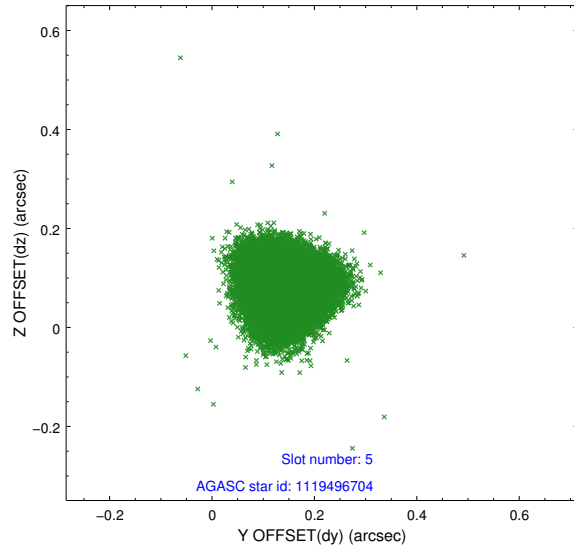
2.4.1 Slot 3



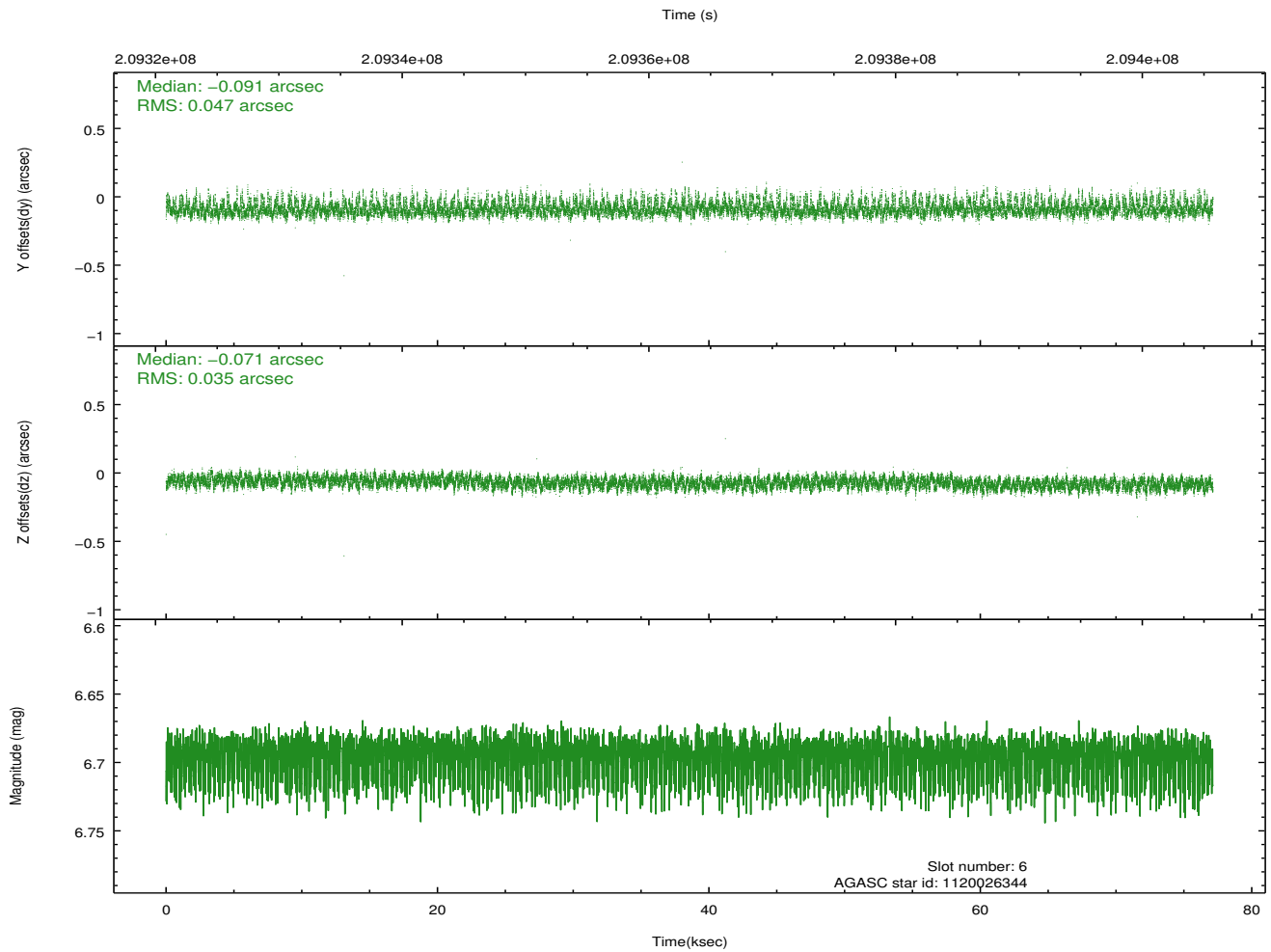
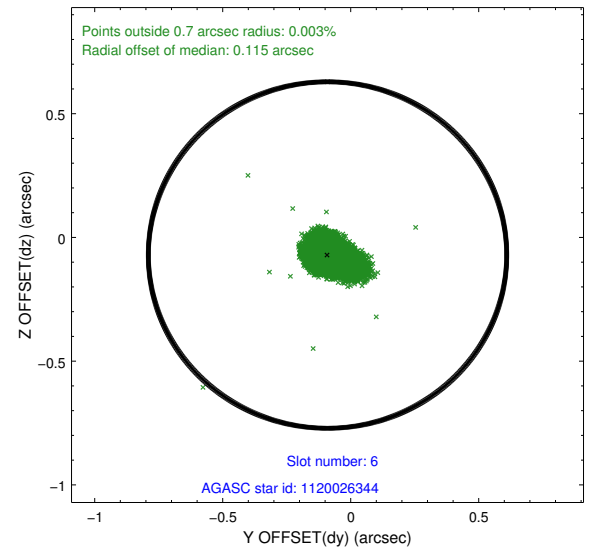
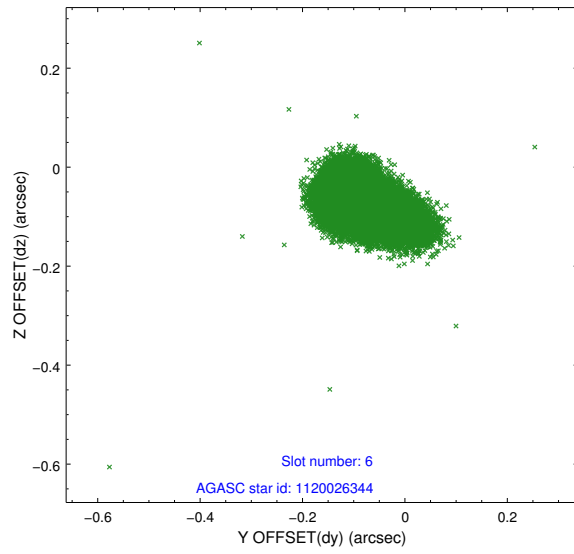
2.4.2 Slot 4



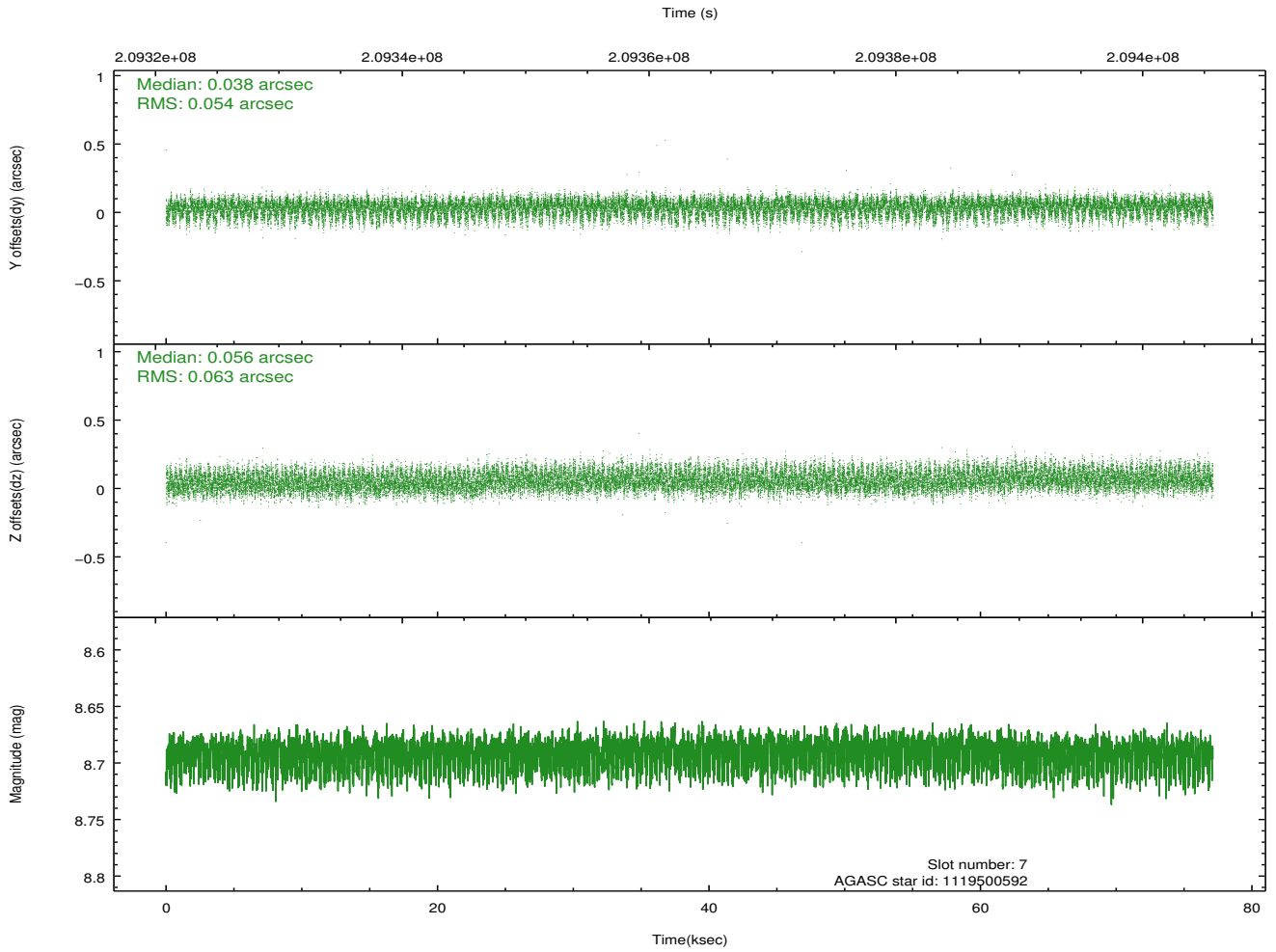
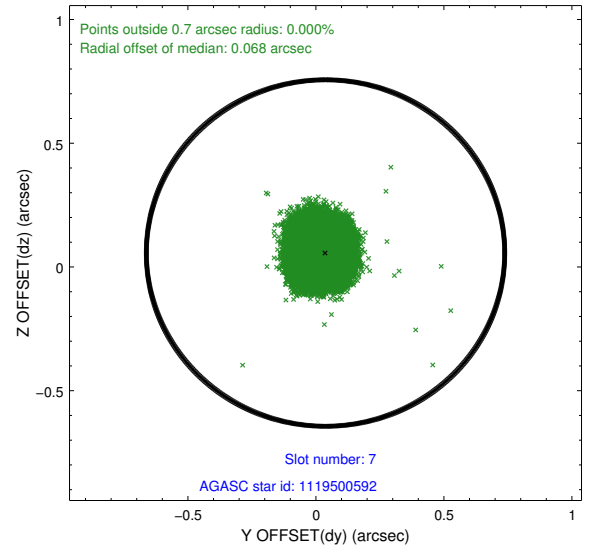
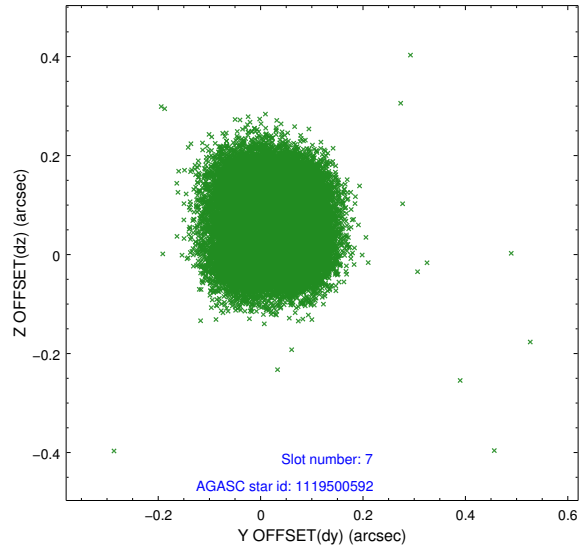
2.4.3 Slot 5



2.4.4 Slot 6

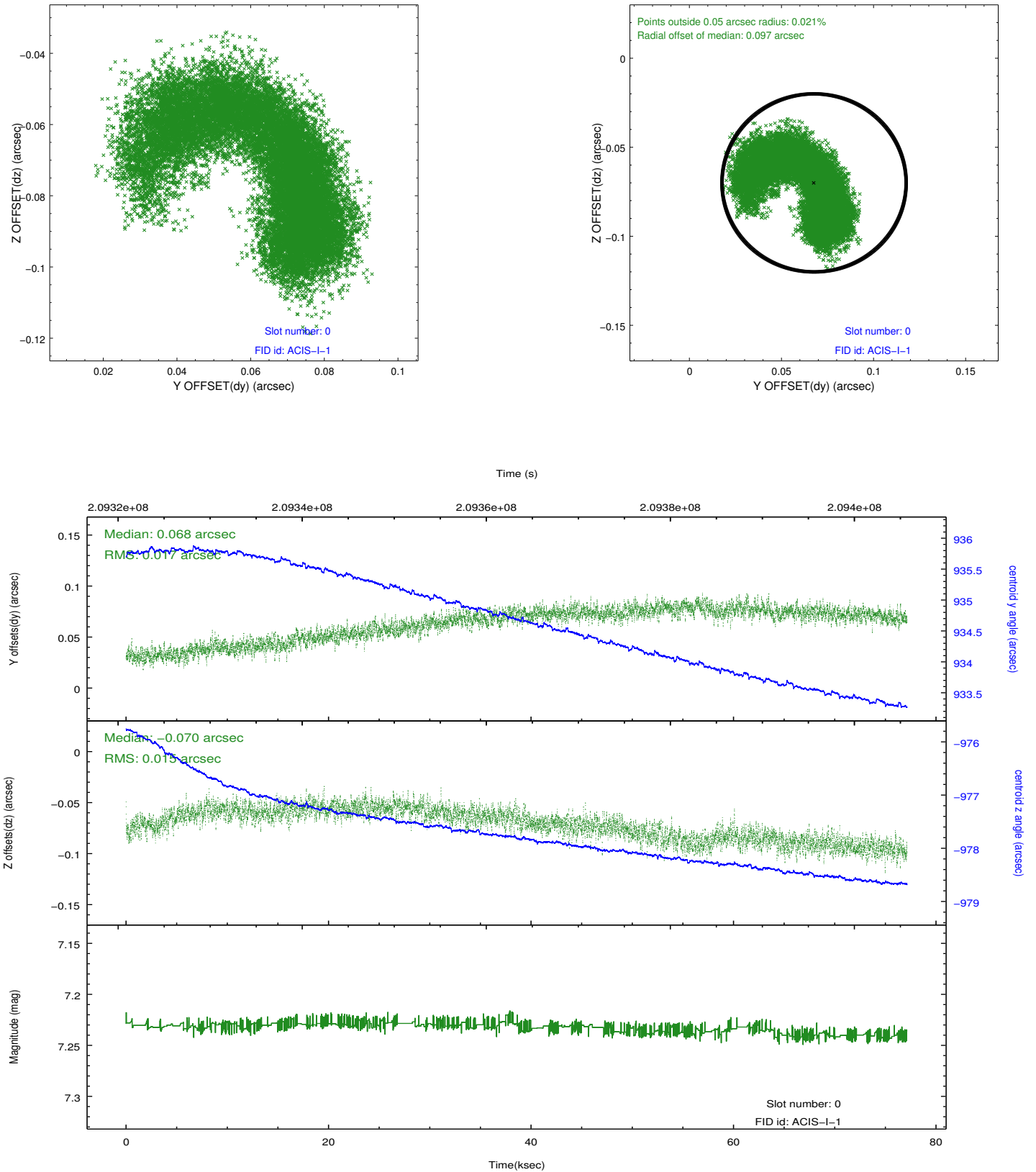


2.4.5 Slot 7

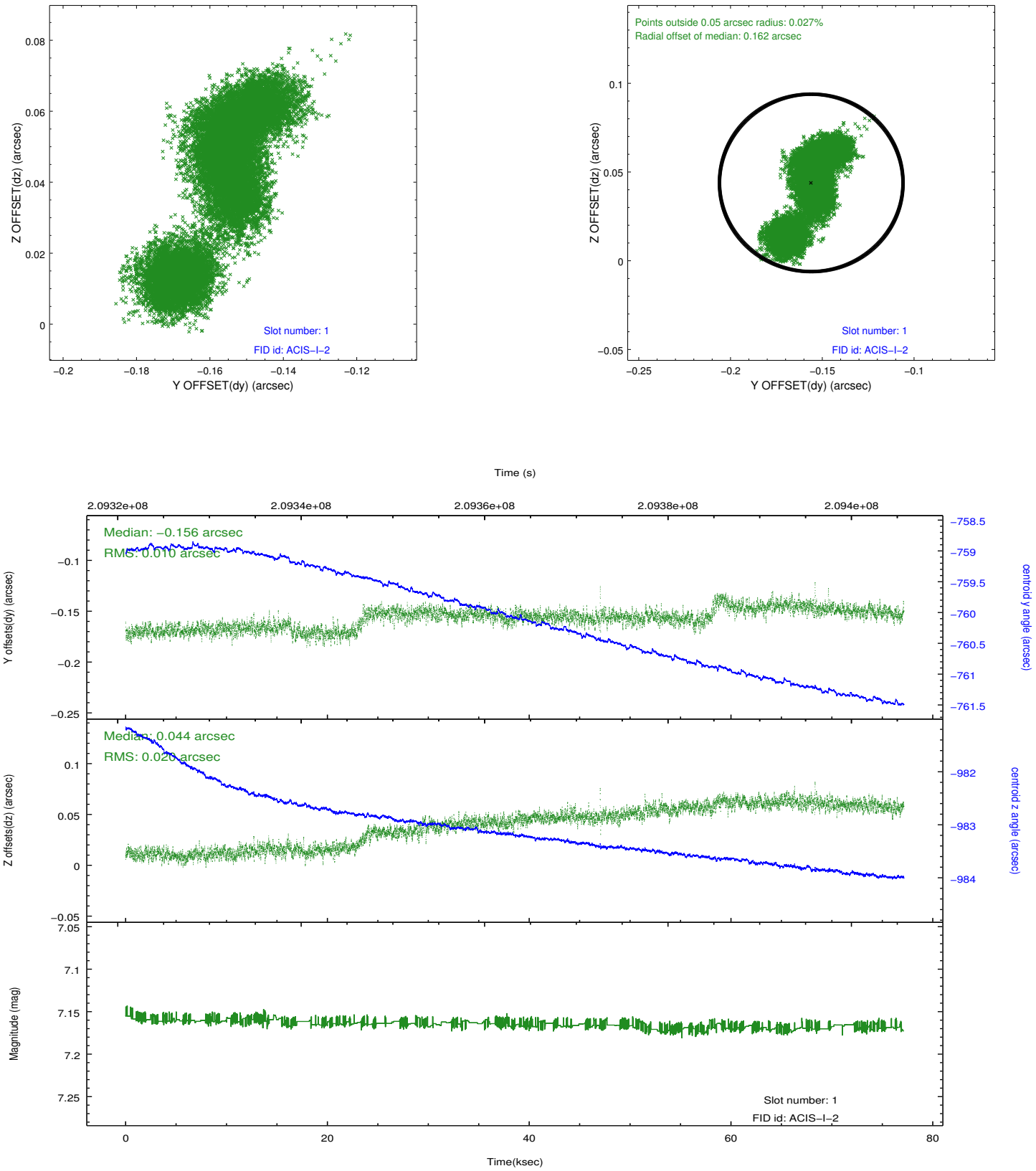


2.5 FID Slots

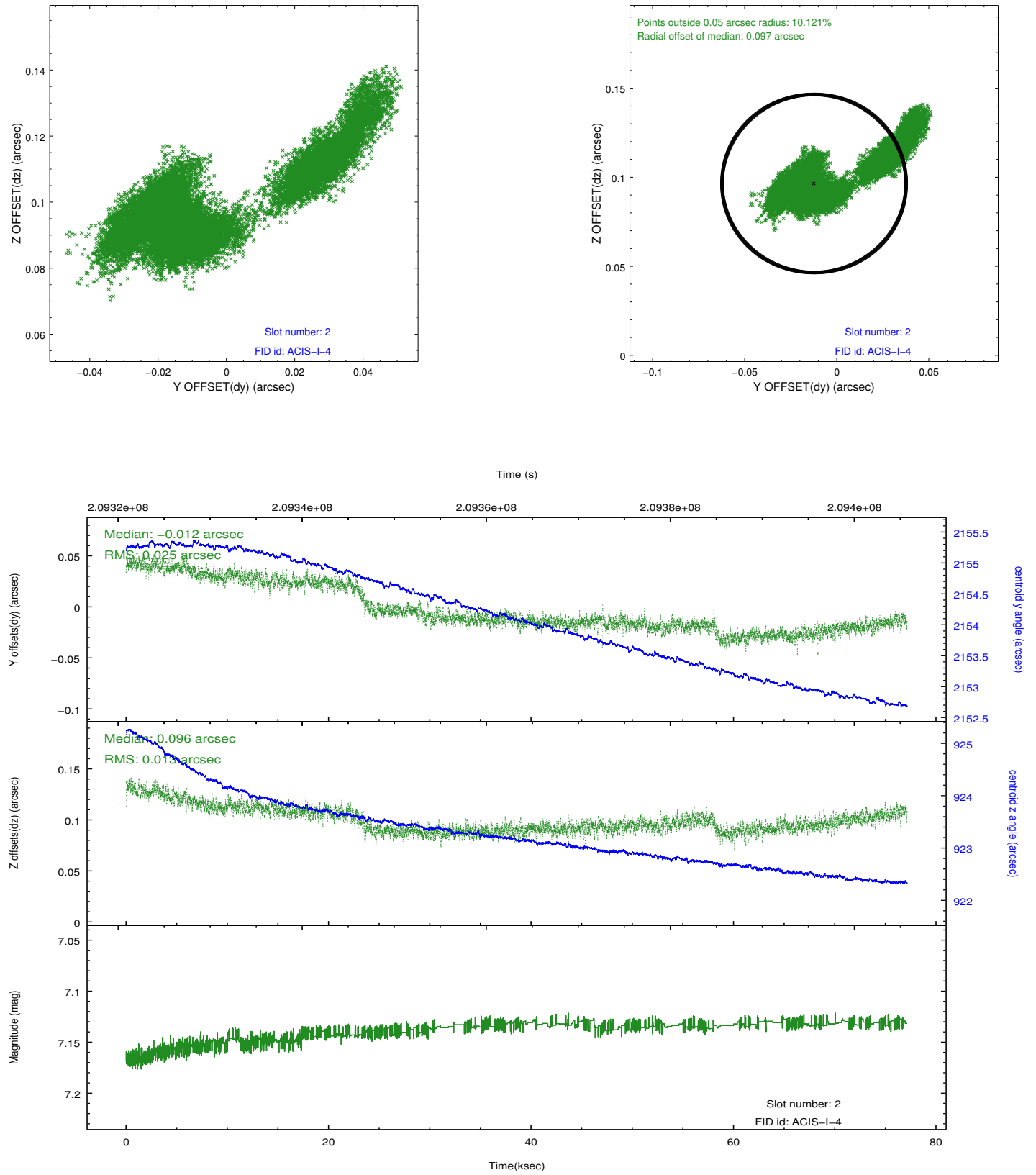
2.5.1 Slot 0



2.5.2 Slot 1



2.5.3 Slot 2



A Summary

A.1 Status

V&V Scientist	Jen Lauer
V&V Date (YYYY-MM-DD)	2012.12.21
V&V Edition	1
V&V Disposition and Status	OK
V&V Charge Time	77.124

A.2 Comments