

# V&V Reference Report

## L2 ASCDS Version : 8.4.5

Observation 4982 - L2 Version 3  
Chandra X-Ray Center

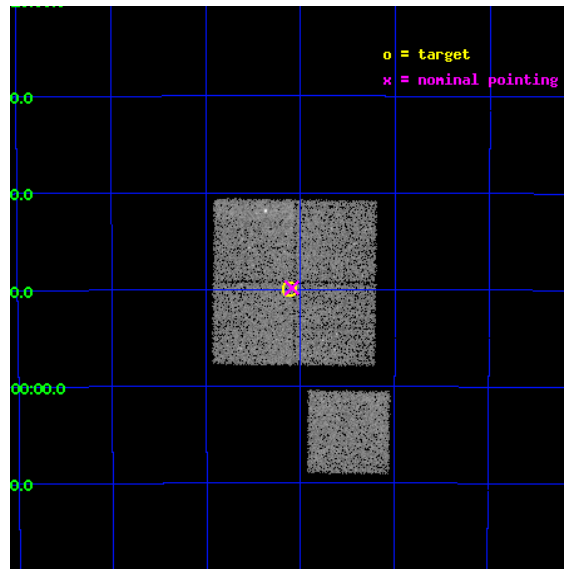
L2 Processing Date : Dec 2 2012

## Contents

<b>1</b>	<b>Front</b>	<b>2</b>
<b>2</b>	<b>OBI</b>	<b>3</b>
2.1	OBI . . . . .	3
2.1.1	Images . . . . .	3
2.1.2	Bias . . . . .	3
2.1.3	Parameters . . . . .	4
2.1.4	Events . . . . .	4
2.2	Compared Parameters . . . . .	5
2.3	Aspect . . . . .	6
2.4	Star Slots . . . . .	9
2.4.1	Slot 3 . . . . .	9
2.4.2	Slot 4 . . . . .	10
2.4.3	Slot 5 . . . . .	11
2.4.4	Slot 6 . . . . .	12
2.4.5	Slot 7 . . . . .	13
2.5	FID Slots . . . . .	14
2.5.1	Slot 0 . . . . .	14
2.5.2	Slot 1 . . . . .	15
2.5.3	Slot 2 . . . . .	16
<b>A</b>	<b>Summary</b>	<b>17</b>
A.1	Status . . . . .	17
A.2	Comments . . . . .	17

# 1 Front

seq_num	800427	Sequence number
obs_id	4982	Observation id
title	Chandra Observations of DLS Shear-Selected Clusters	Proposal title
observer	Prof. John Hughes	Principal investigator
object	DLS J0518-4849	Source name
dtcycle	0	&#160
cycle	P	events from which exps? Prim/Second/Both
ra_targ	79.529583	Observer's specified target RA [deg]
dec_targ	-48.832472	Observer's specified target Dec [deg]
ra_nom	79.523024561416	Nominal RA [deg]
dec_nom	-48.830690271617	Nominal Dec [deg]
roll_nom	180.63891977655	Nominal Roll [deg]
revision	3	Processing version of data
ontime	20096.204965919	Sum of GTIs [s]
livetime	19833.633253429	Livetime [s]
ontime0	20102.363796324	Sum of GTIs [s]
ontime1	20102.404836327	Sum of GTIs [s]
ontime2	20102.44587633	Sum of GTIs [s]
ontime3	20096.204965919	Sum of GTIs [s]
ontime6	20102.32275632	Sum of GTIs [s]
l2events	50880	Number of level 2 events

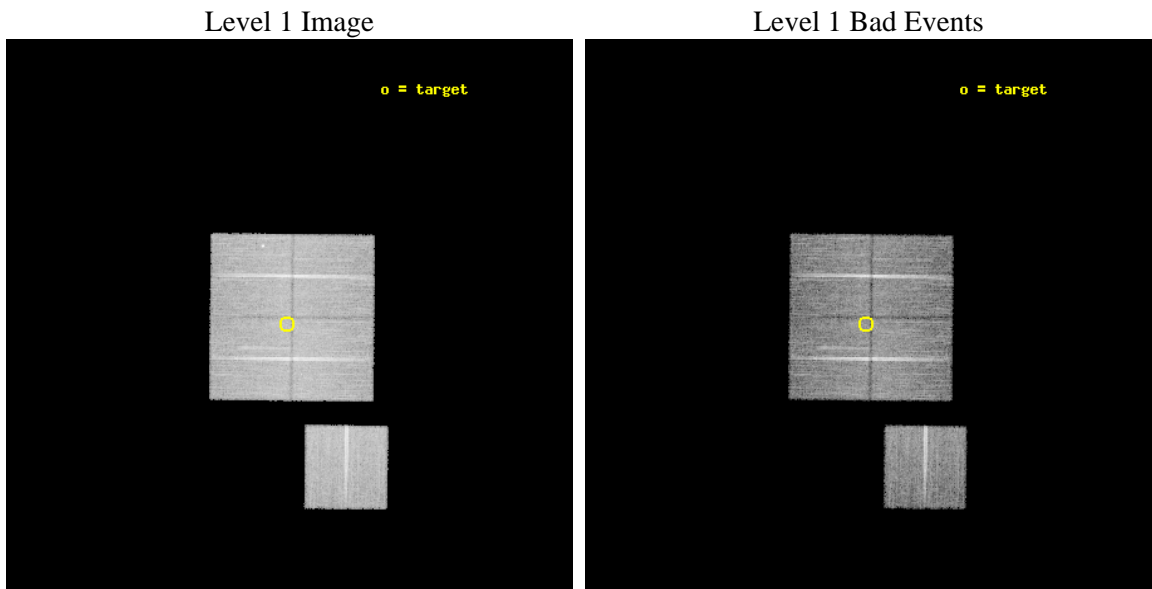




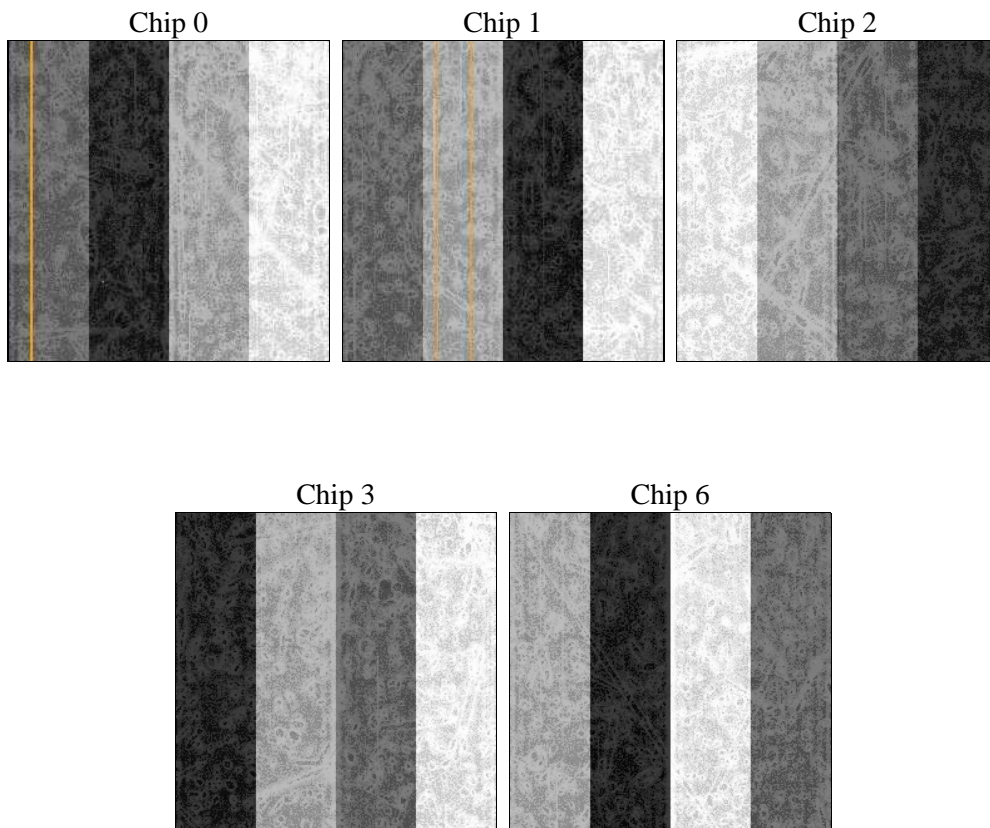
## 2 OBI

### 2.1 OBI

#### 2.1.1 Images



#### 2.1.2 Bias



### 2.1.3 Parameters

obi_num	0	Obi number	sched_exp_time	20000.000000	[s] Scheduled observation exposure time
ascdsver	8.4.5	Processing system revision	ontime	20096.204965919	Sum of GTIs [s]
caldsver	4.5.2	&#160	ontime0	20102.363796324	Sum of GTIs [s]
date	2012-12-03T00:57:46	Date and time of file creation	ontime1	20102.404836327	Sum of GTIs [s]
revision	3	Processing version of data	ontime2	20102.44587633	Sum of GTIs [s]
			ontime3	20096.204965919	Sum of GTIs [s]
			ontime6	20102.32275632	Sum of GTIs [s]
			l1events	595458	Number of level 1 events

### 2.1.4 Events

	ccd 0	ccd 1	ccd 2	ccd 3	ccd 6
level 1 events	112718	116230	126912	119888	119710
rejected events	100882	101939	115284	108614	107453
rejected %	89%	87%	90%	90%	89%

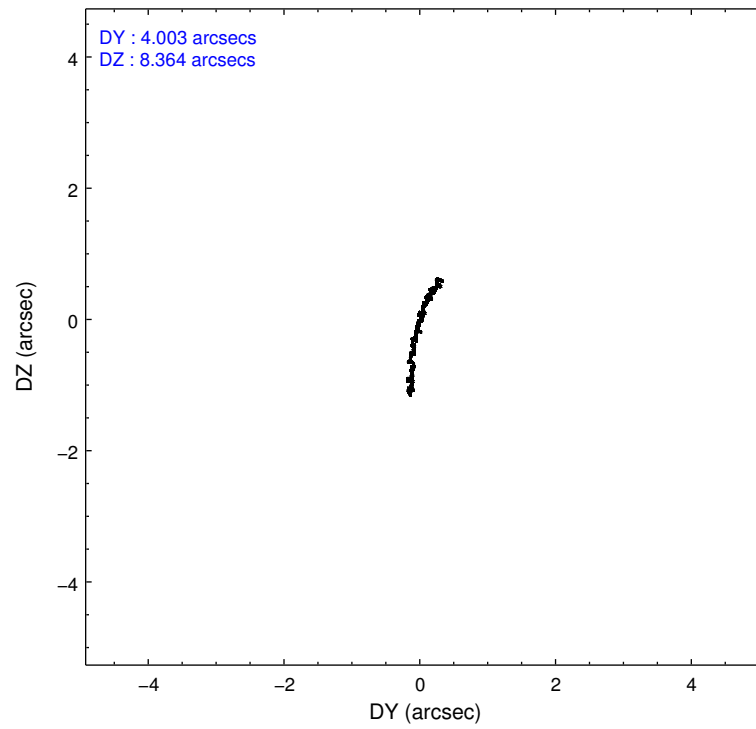
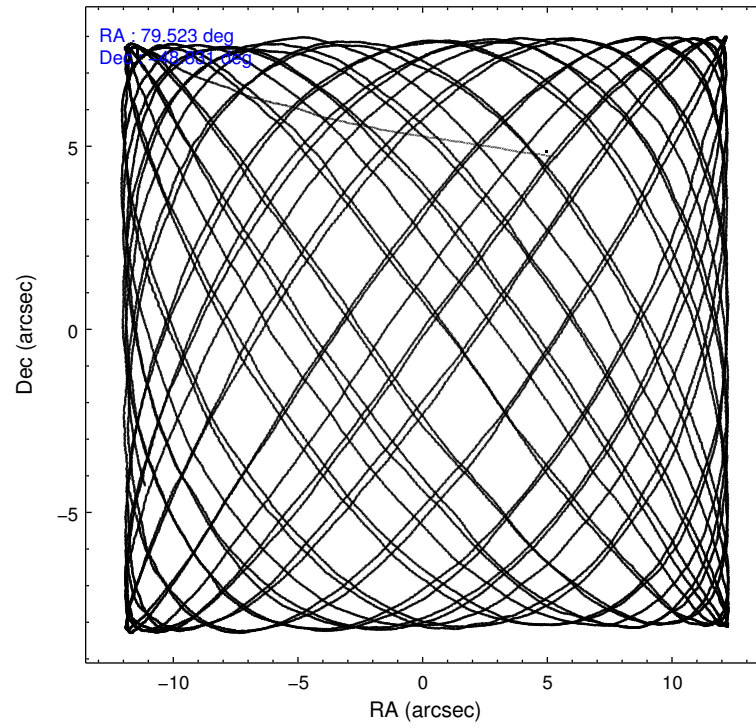
	ccd 0	ccd 1	ccd 2	ccd 3	ccd 6
grade 0 events	3978	5536	4183	3892	4122
	3%	4%	3%	3%	3%
grade 1 events	41	65	59	63	44
	0%	0%	0%	0%	0%
grade 2 events	2743	2973	2616	2500	2715
	2%	2%	2%	2%	2%
grade 3 events	1443	1553	1335	1305	1400
	1%	1%	1%	1%	1%
grade 4 events	1301	1529	1378	1317	1418
	1%	1%	1%	1%	1%
grade 5 events	4306	4682	4074	4864	4721
	3%	4%	3%	4%	3%
grade 6 events	2374	2703	2126	2262	2608
	2%	2%	1%	1%	2%
grade 7 events	96532	97189	111141	103685	102682
	85%	83%	87%	86%	85%

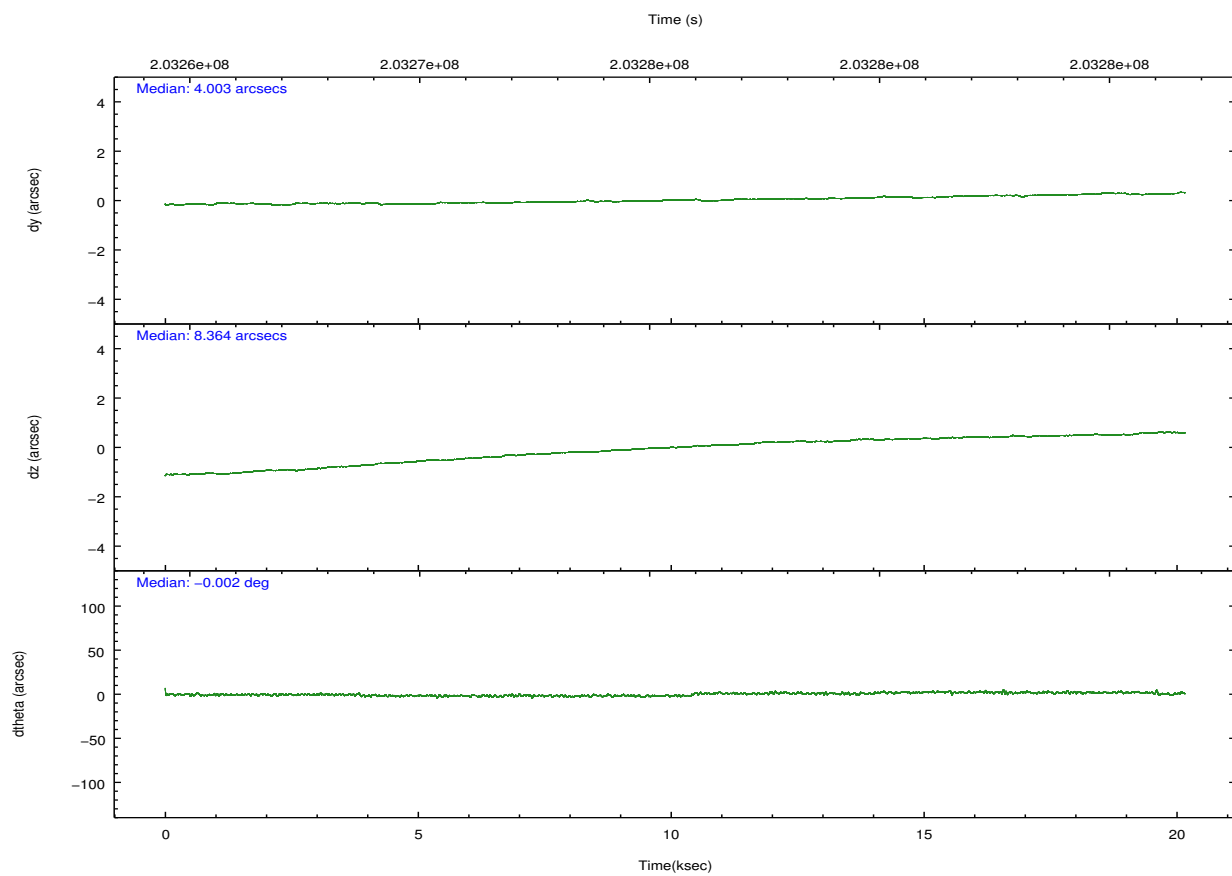
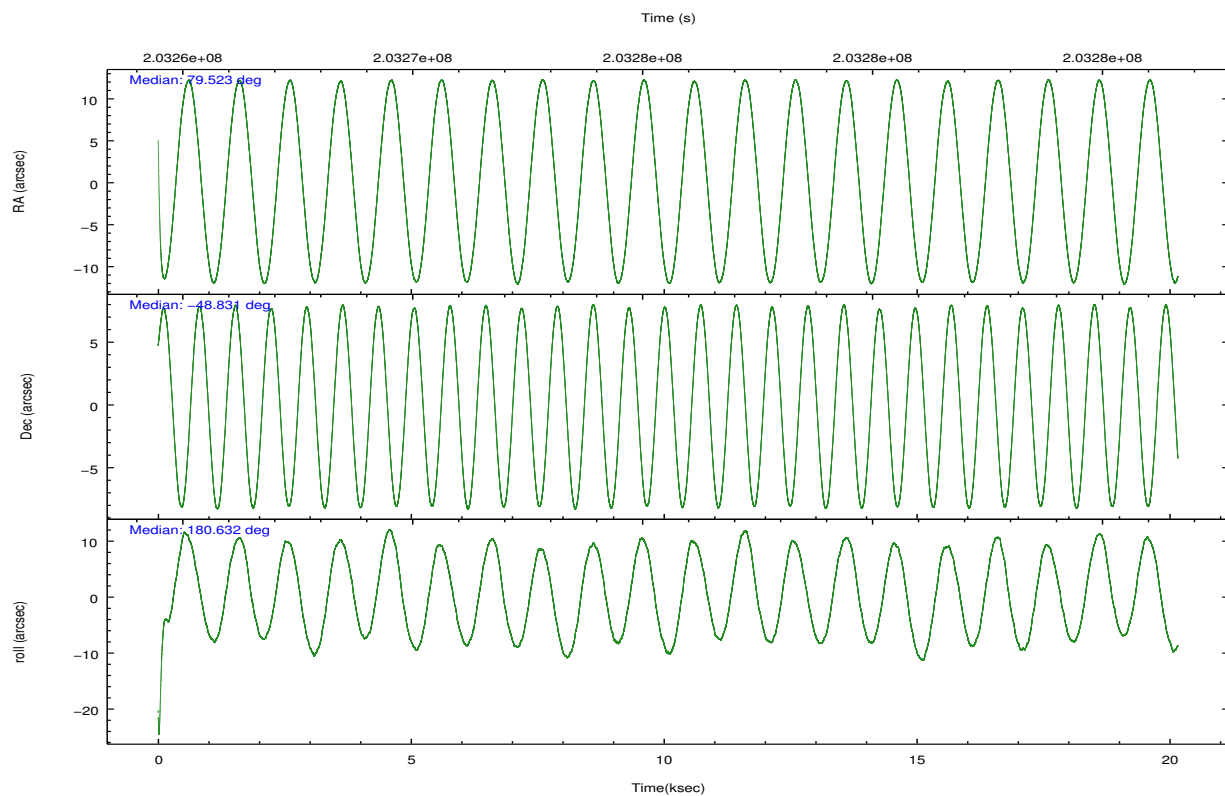
## 2.2 Compared Parameters

Parameter	Planned	Actual
Instrument	ACIS	ACIS
Detector	ACIS-01236	ACIS-01236
Grating	NONE	NONE
Data mode	VFAINT	VFAINT
Observation mode	POINTING	POINTING
[deg] Pointing RA	79.558760	79.52302456141578
[deg] Pointing Dec	-48.816658	-48.83069027161737
[deg] Pointing Roll	180.457155	180.6389197765515
[mm] SIM focus pos	-0.782348	-0.7809083437167272
[mm] SIM defocus	0	0.001439871863259334
[mm] SIM translation stage pos	-233.592463	-233.5874344608287
[mm] SIM translation stage offset	0	-0.005018542100998502
[s] Observation start time (MET)	203265628.184000	203264674.5609
Observation start date	2004-06-10T14:39:24	2004-06-10T14:24:34
[s] Observation end time (MET)	203285628.184000	203286312.82435
Observation end date	2004-06-10T20:12:44	2004-06-10T20:25:12
Read mode	TIMED	TIMED

Parameter	Planned	Actual
Obspar format version number	7	7
Obspar file type	PREDICTED	ACTUAL
Obspar update status	NONE	UPDATED
Number of optional ACIS chips dropped	0	0
On-chip summing requested	N	N
Subarray requested	NONE	NONE
Alternating exposures requested	N	N
[s] Primary exposure time	0.000000	3.1

## 2.3 Aspect



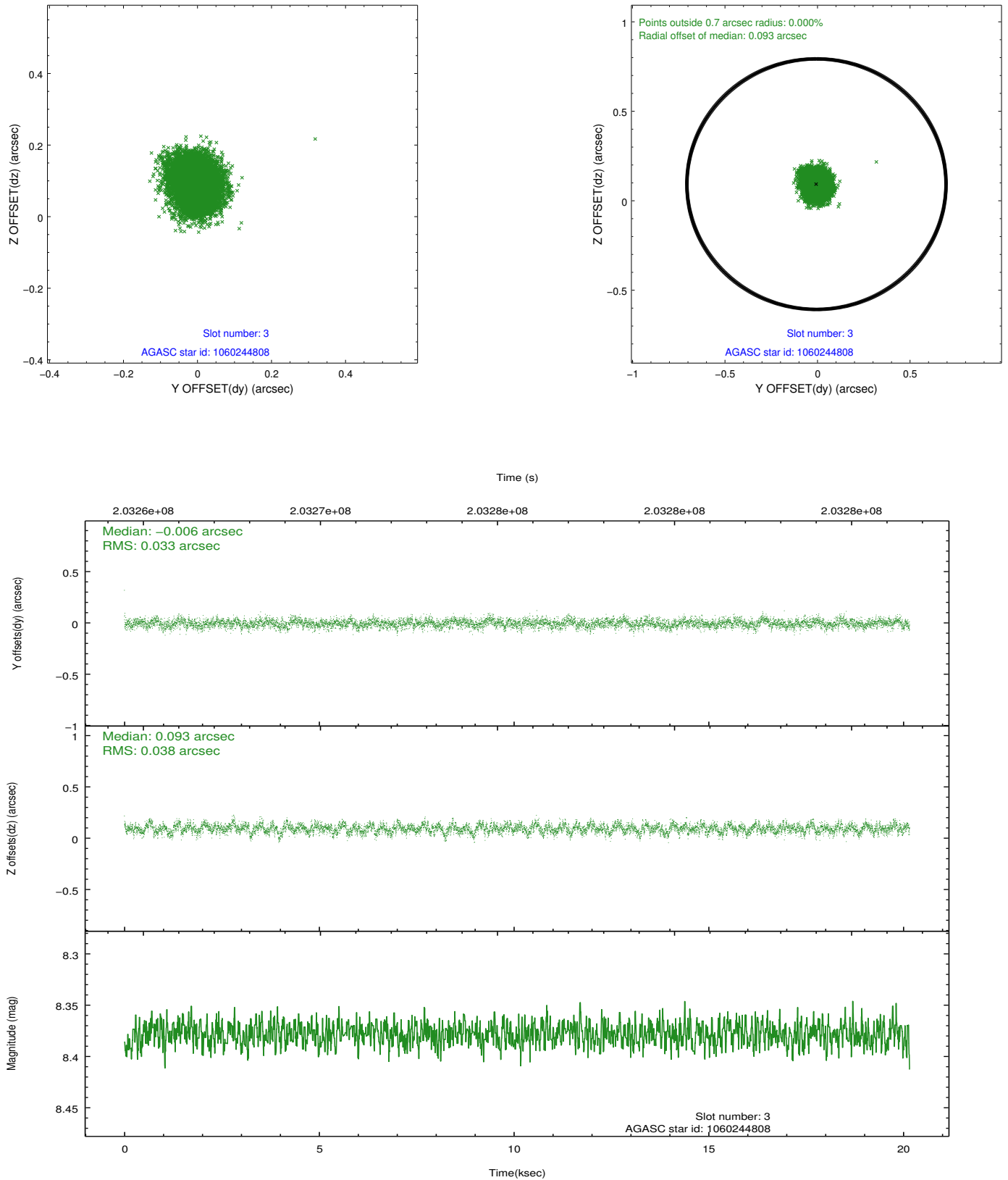


### Slot Statistics

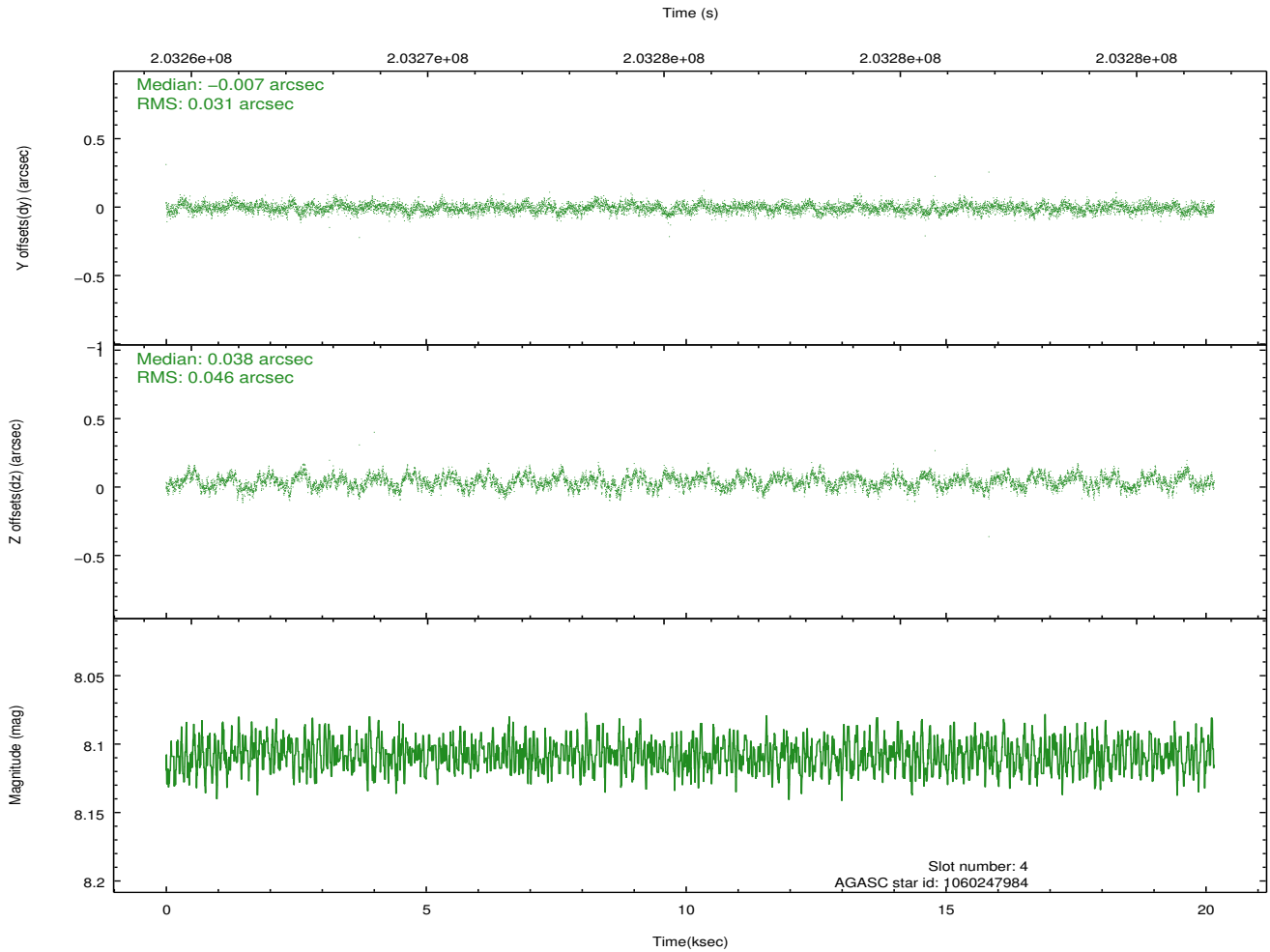
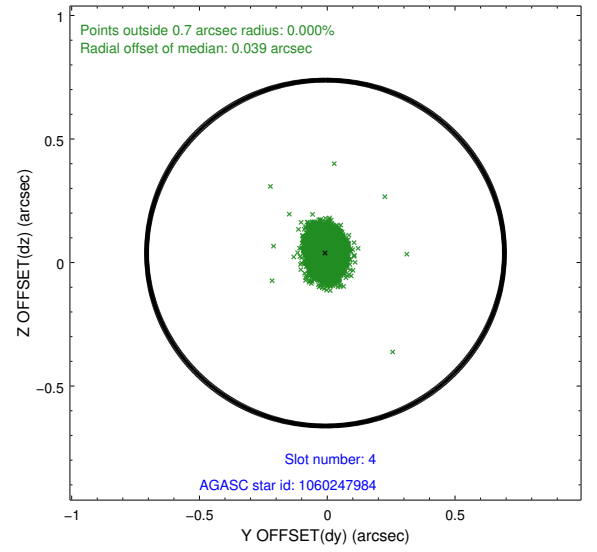
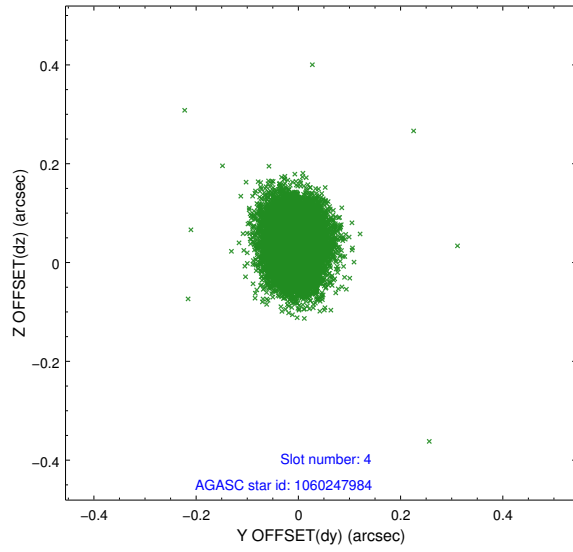
slot	status	id	mag	n_pts	med_dy	med_dz	dr1	dr2	ra	dec	mean_y	mean_z
0	FID	ACIS-I-2	7.14	4918	-0.136	-0.053	0.018	0.027	0.000000	0.000000	-758.57	-838.10
1	FID	ACIS-I-4	7.17	4917	0.078	0.081	0.017	0.023	0.000000	0.000000	2155.61	1068.13
2	FID	ACIS-I-6	7.25	4918	-0.041	0.035	0.014	0.024	0.000000	0.000000	401.83	1710.47
3	GUIDE	1060244808	8.38	9835	-0.006	0.093	0.054	0.087	78.979100	-48.690695	1374.08	-458.06
4	GUIDE	1060247984	8.11	9835	-0.007	0.038	0.059	0.096	79.200991	-48.640794	846.08	-637.27
5	GUIDE	1060766192	8.87	9836	0.045	-0.060	0.073	0.119	80.252562	-49.173251	-1622.62	1304.31
6	GUIDE	1060771312	9.39	9830	-0.118	-0.093	0.087	0.148	79.424524	-48.911494	319.98	339.64
7	GUIDE	1060771792	9.42	9826	0.085	0.018	0.107	0.174	80.313577	-49.351204	-1754.83	1947.54

## 2.4 Star Slots

### 2.4.1 Slot 3

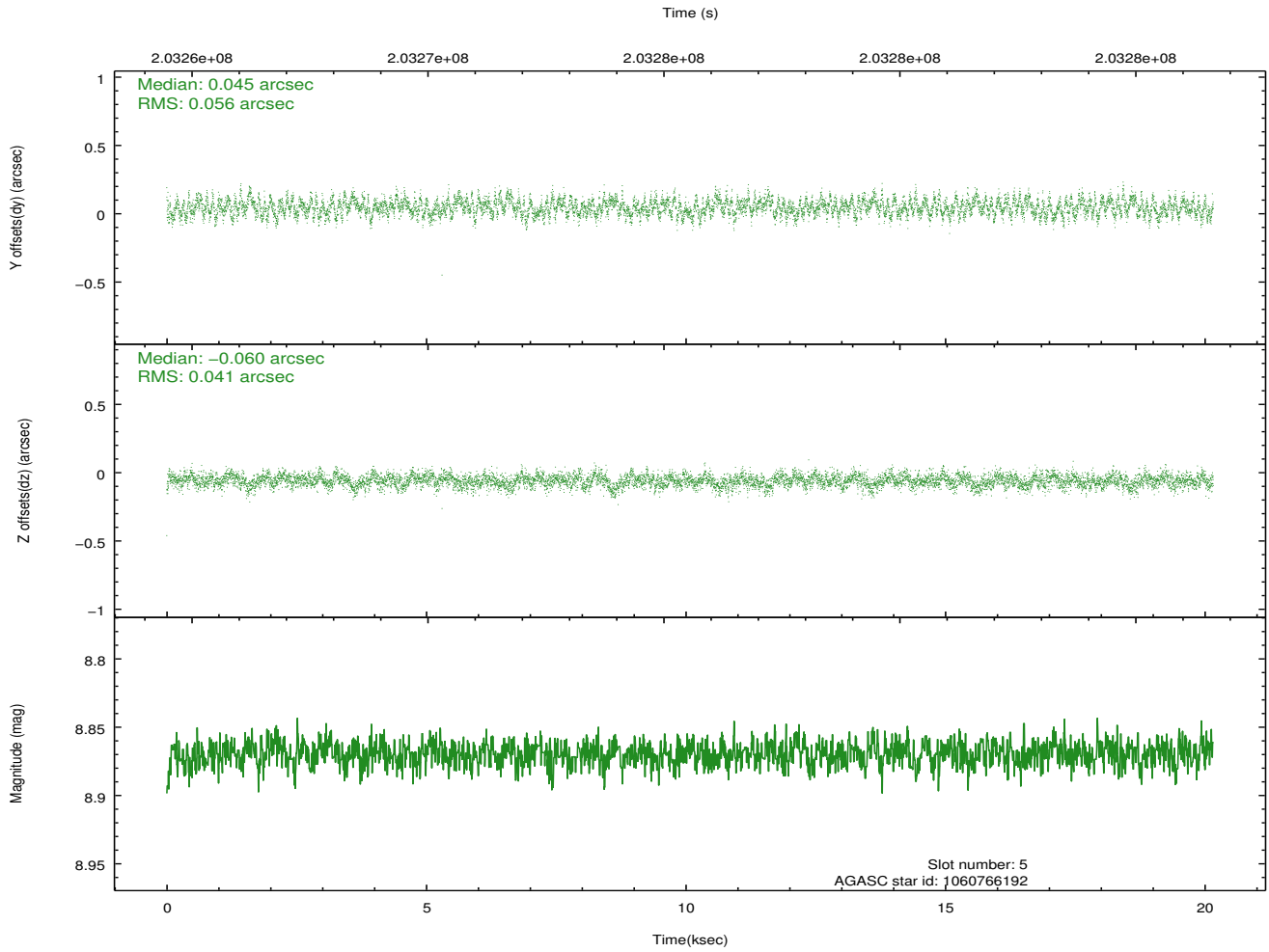
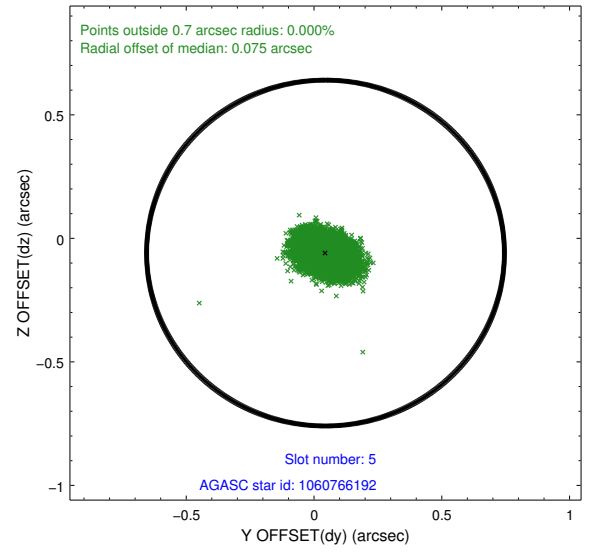
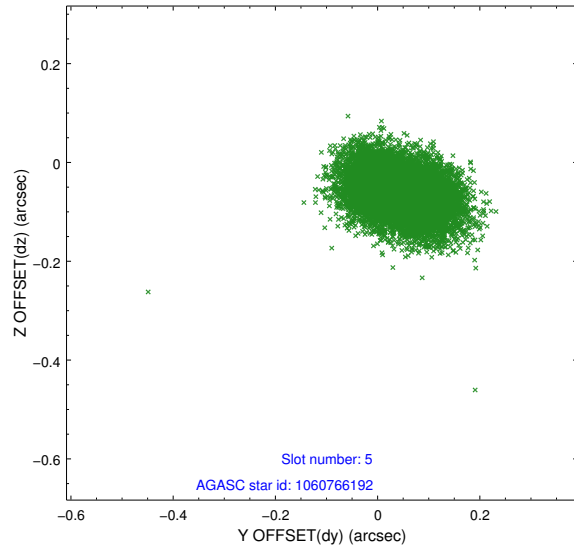


## 2.4.2 Slot 4

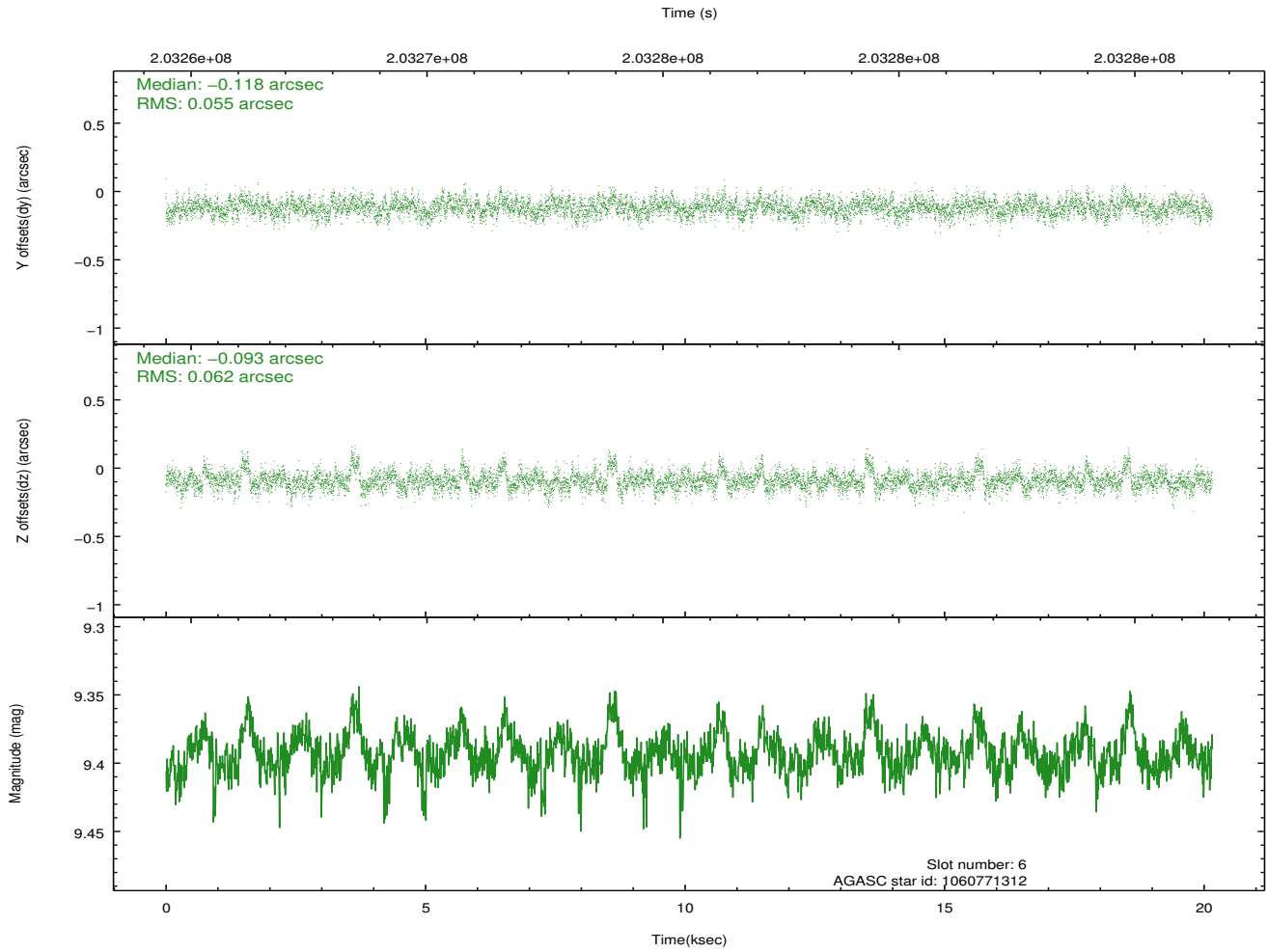
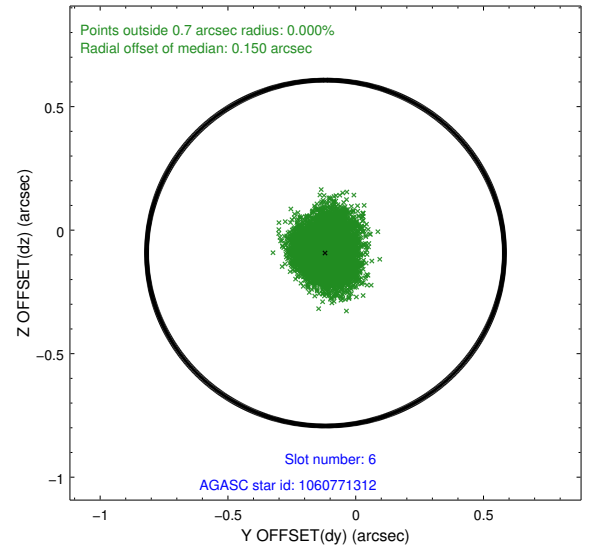
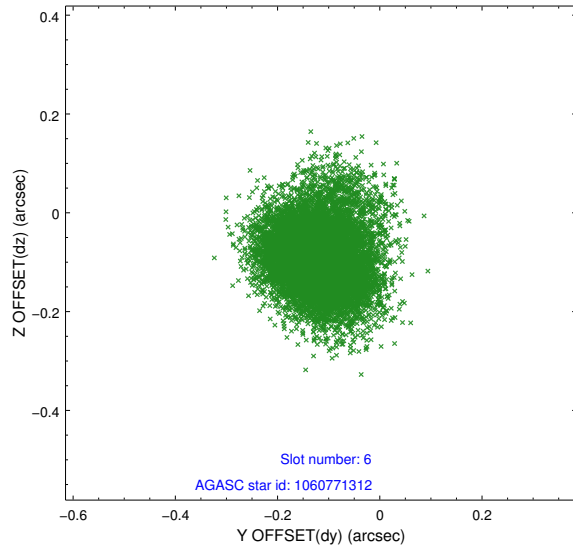




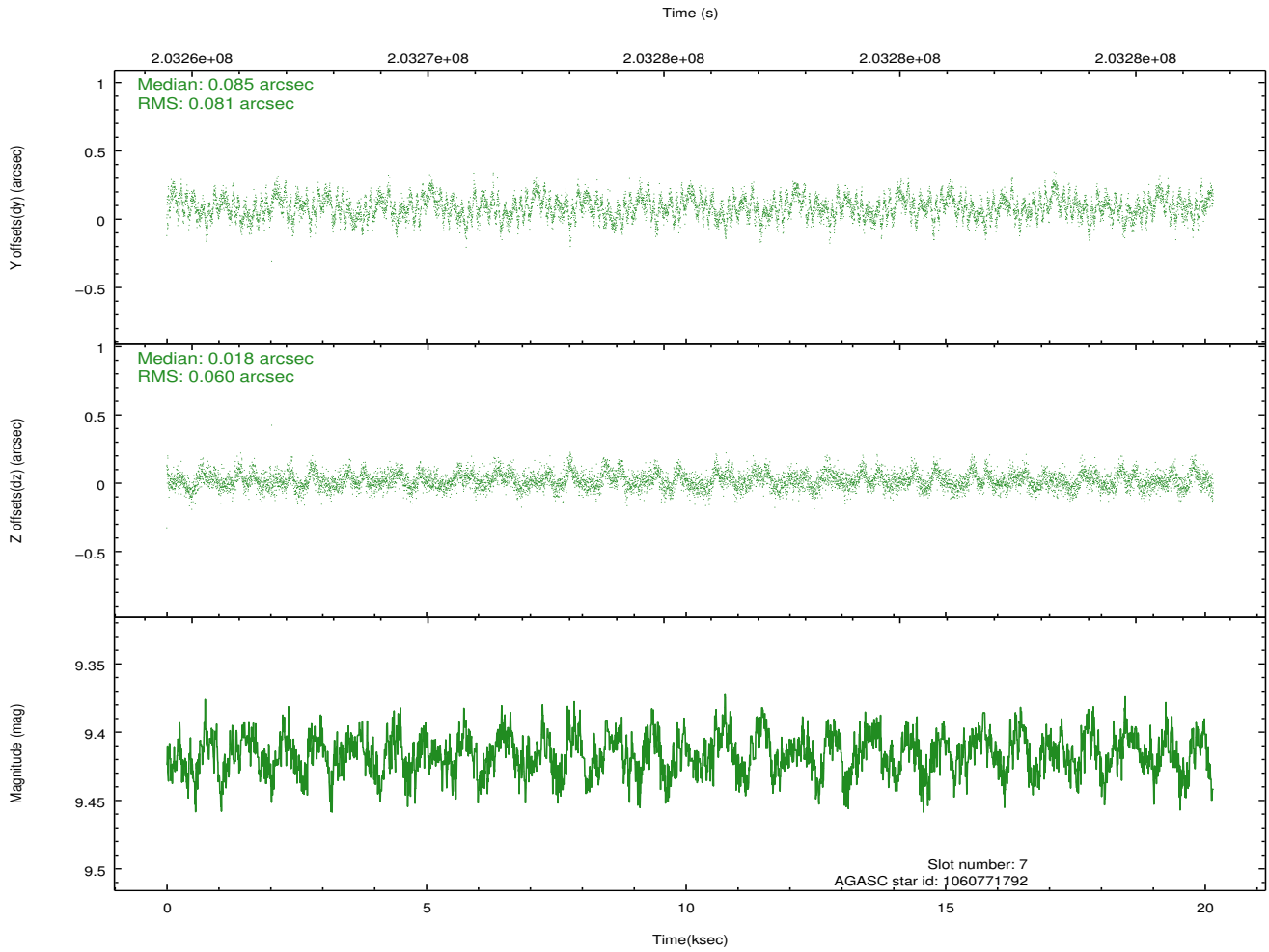
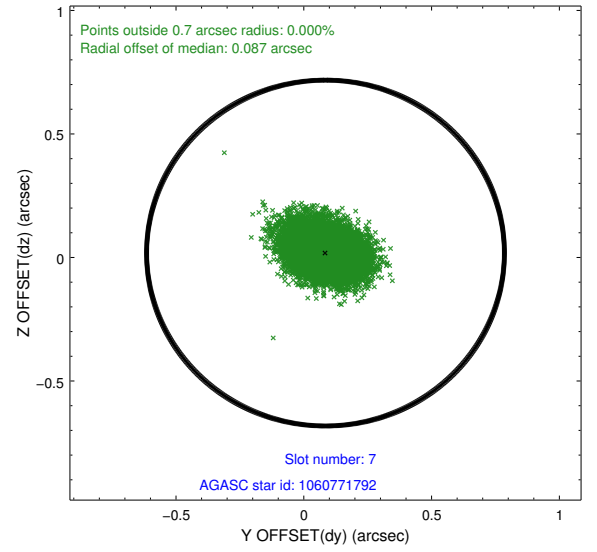
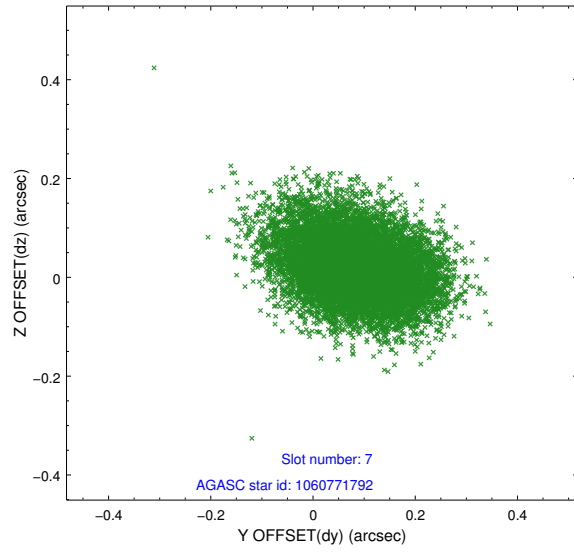
### 2.4.3 Slot 5



## 2.4.4 Slot 6

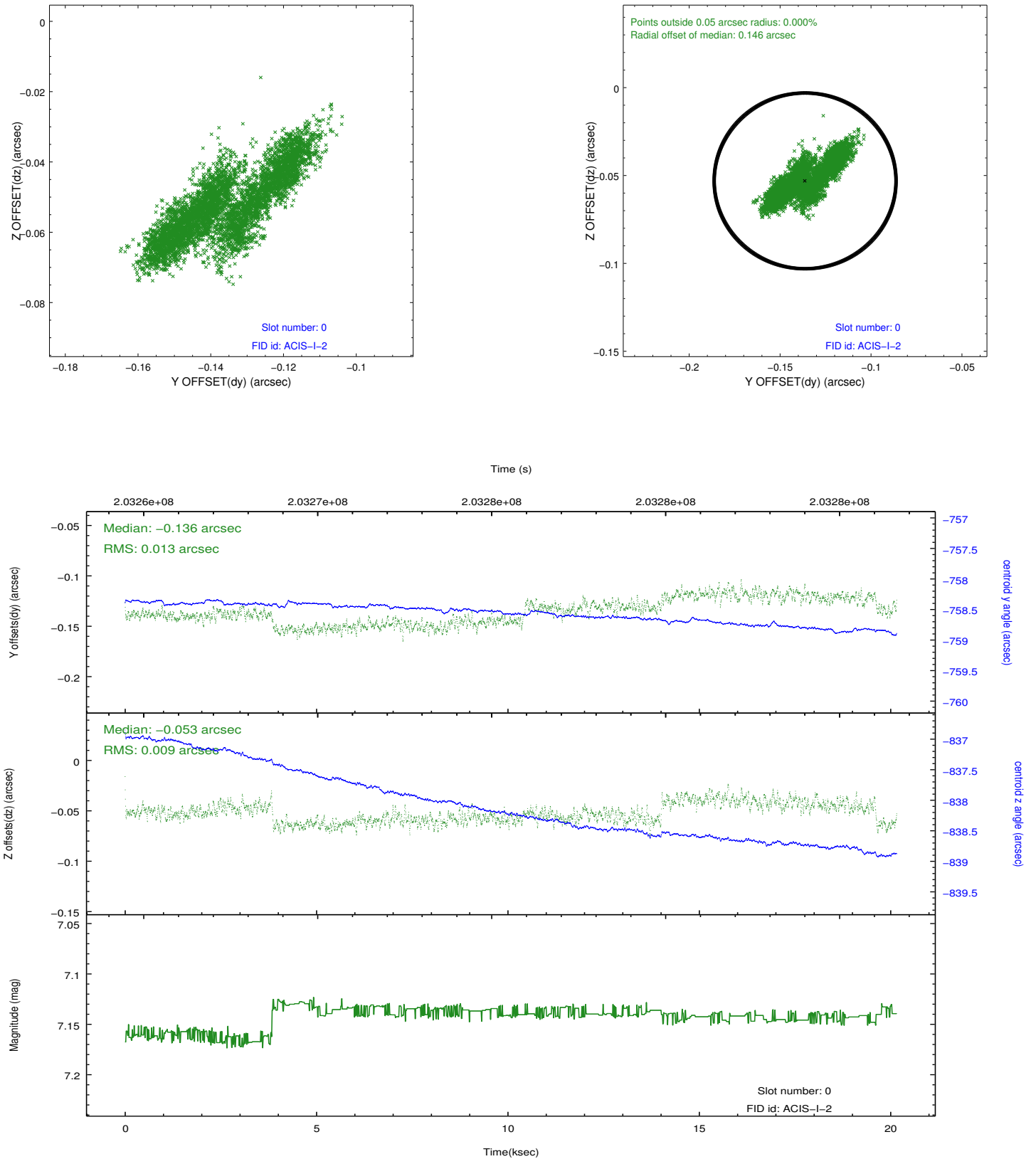


## 2.4.5 Slot 7

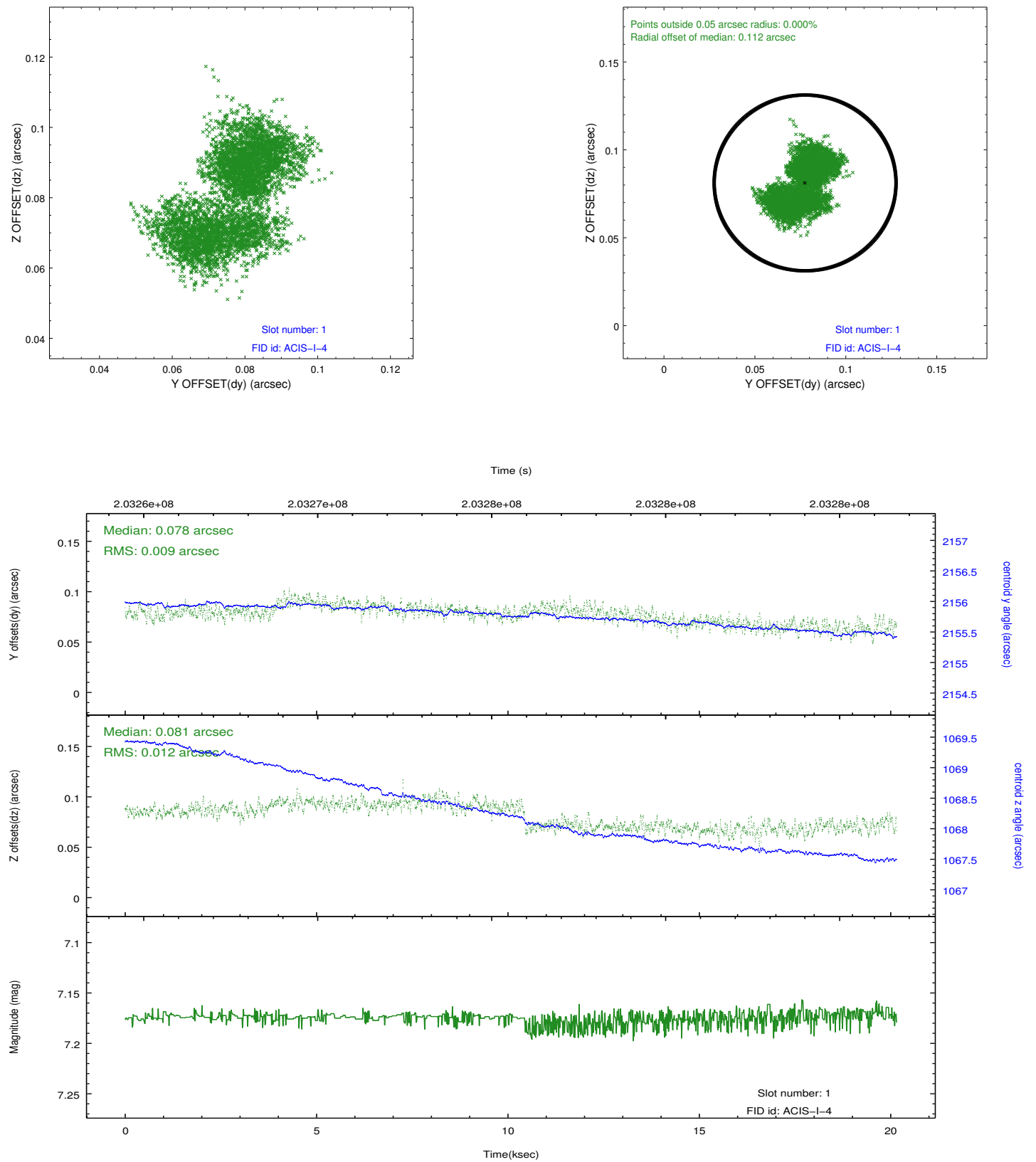


## 2.5 FID Slots

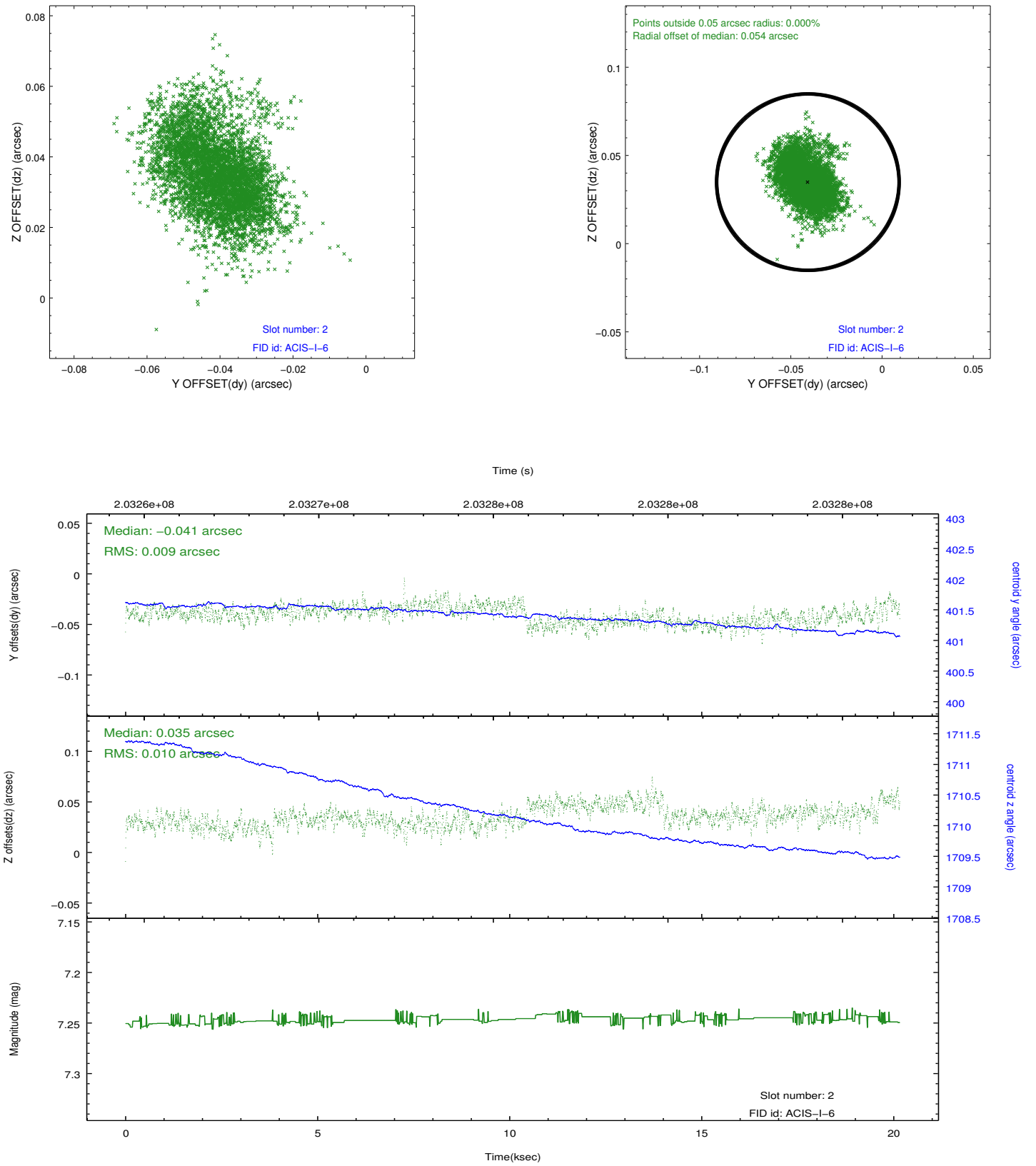
### 2.5.1 Slot 0



## 2.5.2 Slot 1



### 2.5.3 Slot 2



## **A Summary**

### **A.1 Status**

V&V Scientist	Jen Lauer
V&V Date (YYYY-MM-DD)	2012.12.18
V&V Edition	1
V&V Disposition and Status	OK
V&V Charge Time	20.097

### **A.2 Comments**