

V&V Reference Report

L2 ASCDS Version : 7.6.7.2

Observation 4973 - L2 Version 001
Chandra X-Ray Center

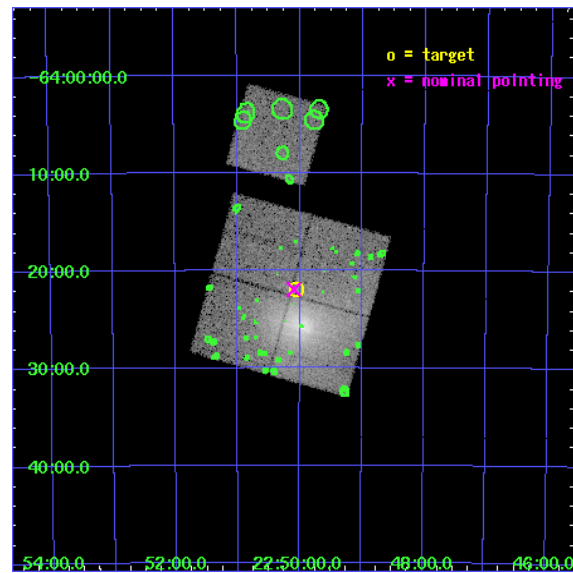
L2 Processing Date : Apr 25 2006

Contents

1	Front	2
2	OBI	3
2.1	OBI	3
2.1.1	Images	3
2.1.2	Bias	3
2.1.3	Parameters	4
2.1.4	Events	4
2.2	Compared Parameters	5
2.3	Aspect	6
2.4	Star Slots	9
2.4.1	Slot 3	9
2.4.2	Slot 4	10
2.4.3	Slot 5	11
2.4.4	Slot 6	12
2.4.5	Slot 7	13
2.5	FID Slots	14
2.5.1	Slot 0	14
2.5.2	Slot 1	15
2.5.3	Slot 2	16
3	Point Sources	17
A	Summary	18
A.1	Status	18
A.2	Comments	18

1 Front

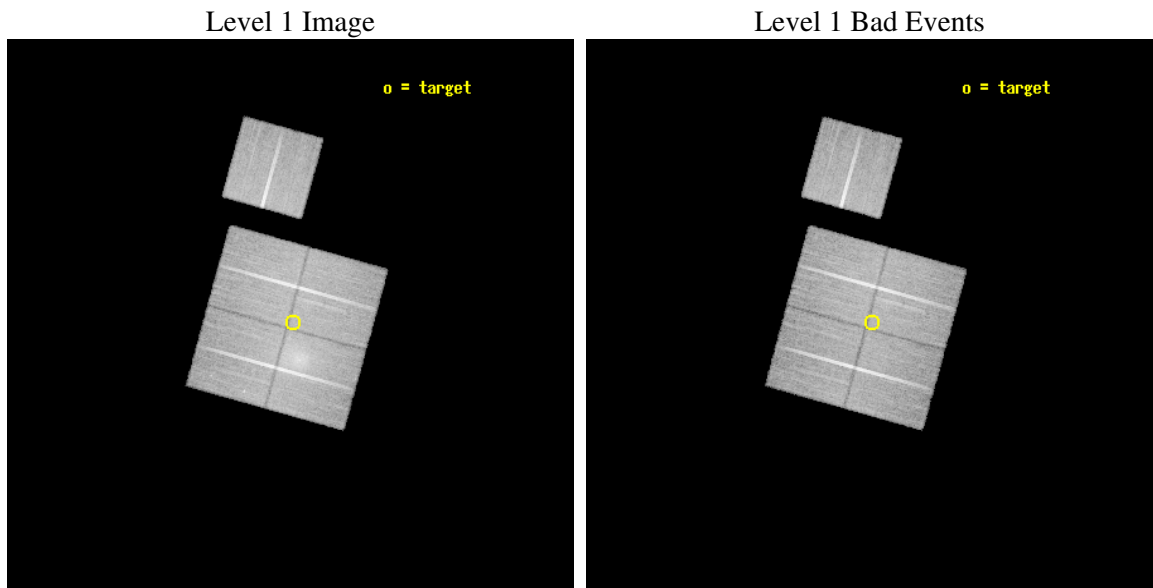
seq_num	800418
obs_id	4973
title	High resolution observations of the merging cluster Abell 3921
observer	Ms. Chiara Ferrari
object	Abell 3921
dtcycle	0
cycle	P
ra_targ	342.5125
dec_targ	-64.365278
ra_nom	342.52309430712
dec_nom	-64.365861295084
roll_nom	15.585480237096
revision	2
ontime	29762.976982117
livetime	29374.10177666
ontime0	29772.399942756
ontime1	29766.117992252
ontime2	29762.976992071
ontime3	29762.976982117
ontime6	29766.117942452
l2events	130083



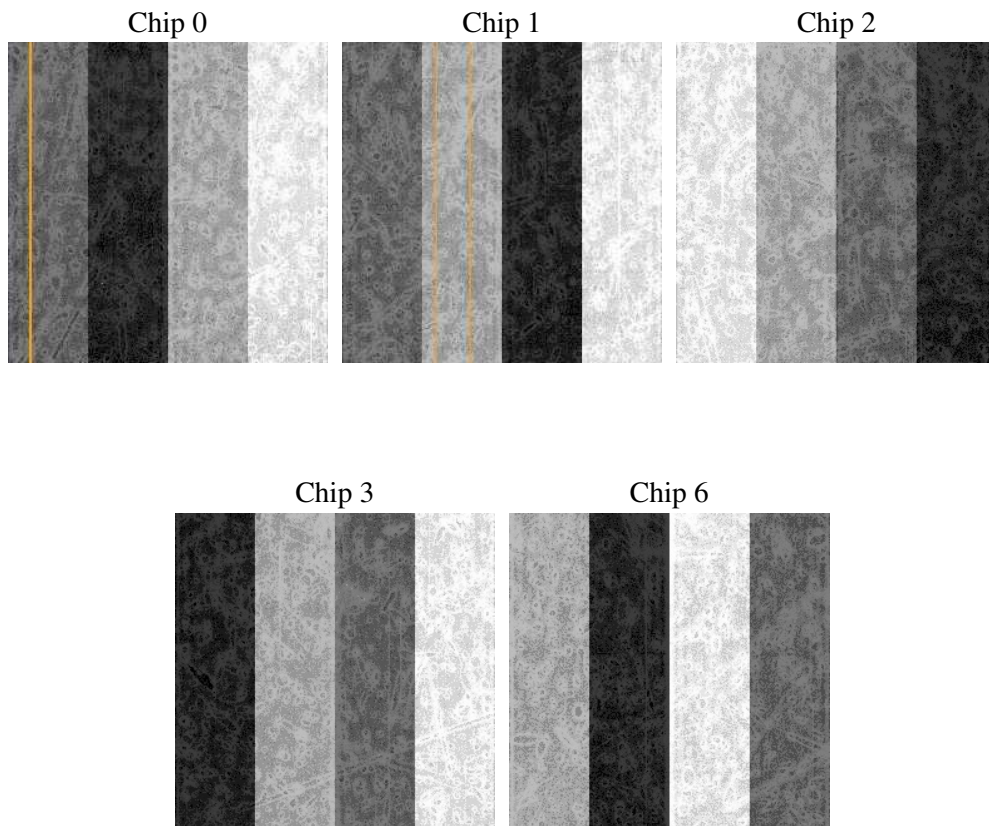
2 OBI

2.1 OBI

2.1.1 Images



2.1.2 Bias



2.1.3 Parameters

obi_num	1
ascdsver	7.6.7.2
caldbver	3.2.1
date	2006-04-25T01:37:39
revision	2

sched_exp_time	30000.000000
ontime	29767.336654752
ontime0	29776.759615391
ontime1	29770.477664888
ontime2	29767.336664706
ontime3	29767.336654752
ontime6	29770.477615088
l1events	988956

2.1.4 Events

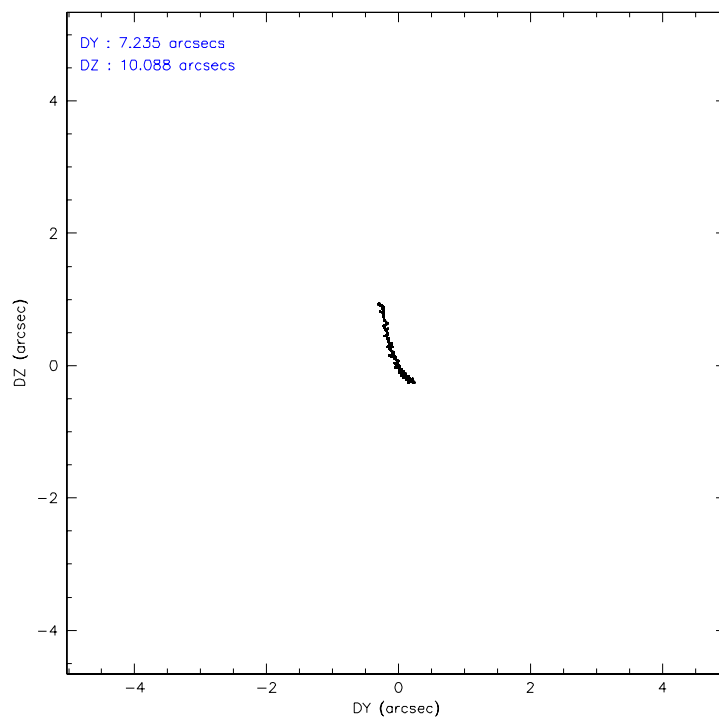
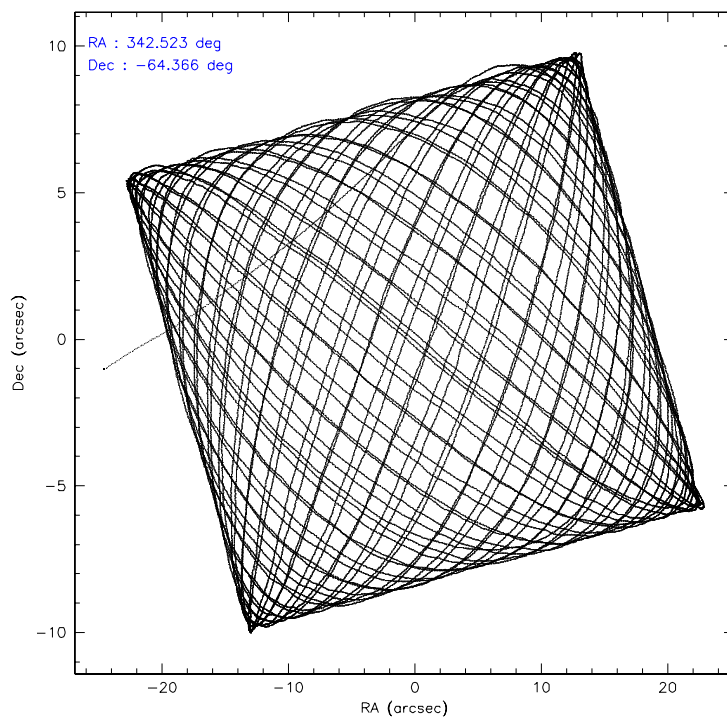
	ccd 0	ccd 1	ccd 2	ccd 3	ccd 6
level 1 events	183917	215503	199533	196521	193482
rejected events	155767	155985	179686	173432	174496
rejected %	84%	72%	90%	88%	90%

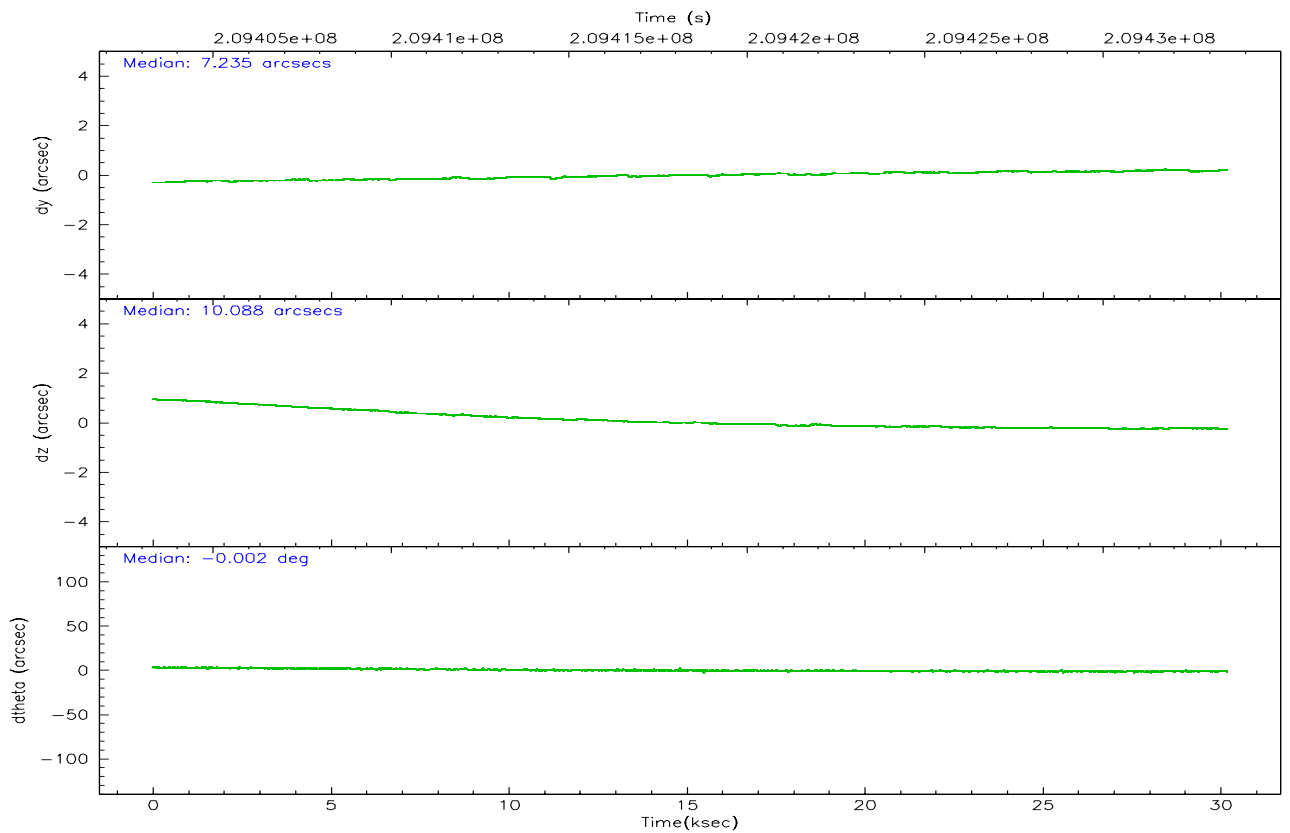
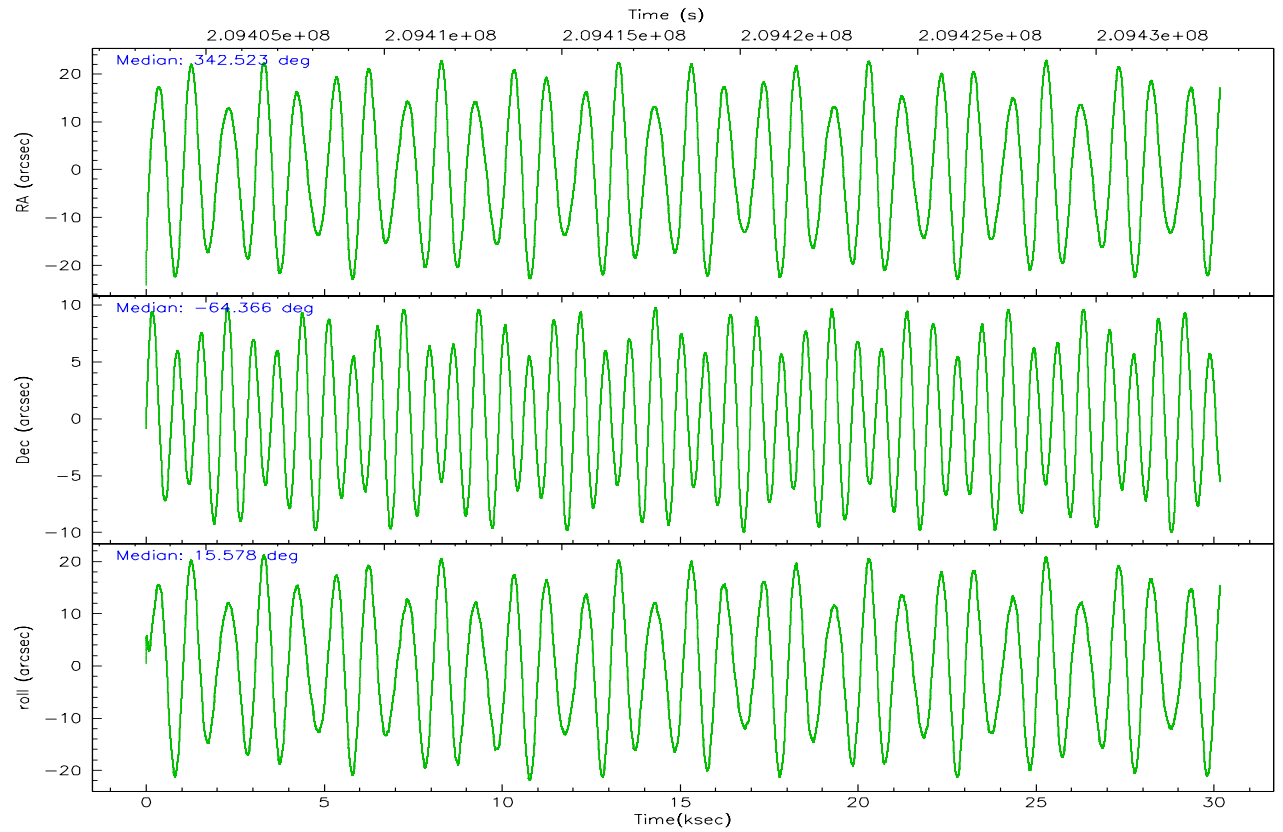
	ccd 0	ccd 1	ccd 2	ccd 3	ccd 6
grade 0 events	14324	39277	7672	10690	6494
	7%	18%	3%	5%	3%
grade 1 events	136	223	124	119	69
	0%	0%	0%	0%	0%
grade 2 events	5206	8255	4487	4358	4039
	2%	3%	2%	2%	2%
grade 3 events	2490	3401	2037	2237	2218
	1%	1%	1%	1%	1%
grade 4 events	2311	3434	2133	2189	2148
	1%	1%	1%	1%	1%
grade 5 events	6468	7131	6182	7439	7479
	3%	3%	3%	3%	3%
grade 6 events	3821	5156	3520	3620	4087
	2%	2%	1%	1%	2%
grade 7 events	149161	148626	173378	165869	166948
	81%	68%	86%	84%	86%

2.2 Compared Parameters

Parameter	Planned	Actual	Parameter	Planned	Actual
Instrument	ACIS	ACIS	Obspar format version number	6	6
Detector	ACIS-01236	ACIS-01236	Obspar file type	PREDICTED	ACTUAL
Grating	NONE	NONE	Obspar update status	NONE	UPDATED
Data mode	VFAINT	VFAINT	On-chip summing requested	N	N
Observation mode	POINTING	POINTING	Subarray requested	NONE	NONE
Pointing RA	342.478982	342.5230943071249	Alternating exposures requested	N	N
Pointing Dec	-64.385499	-64.36586129508369	Primary exposure time	0.000000	3.1
Pointing Roll	15.337007	15.58548023709608			
SIM focus pos (mm)	-0.782348	-0.7809083437167272			
SIM defocus (mm)	0	0.001439871863259334			
SIM translation stage pos (mm)	-233.592463	-233.5874344608287			
SIM translation stage offset (mm)	0	-0.005018542100998502			
Observation start time	209403488.184000	209402554.72084			
Observation start date	2004-08-20T15:37:04	2004-08-20T15:22:34			
Observation end time	209433488.184000	209434196.98474			
Observation end date	2004-08-20T23:57:04	2004-08-21T00:09:56			
Read mode	TIMED	TIMED			

2.3 Aspect



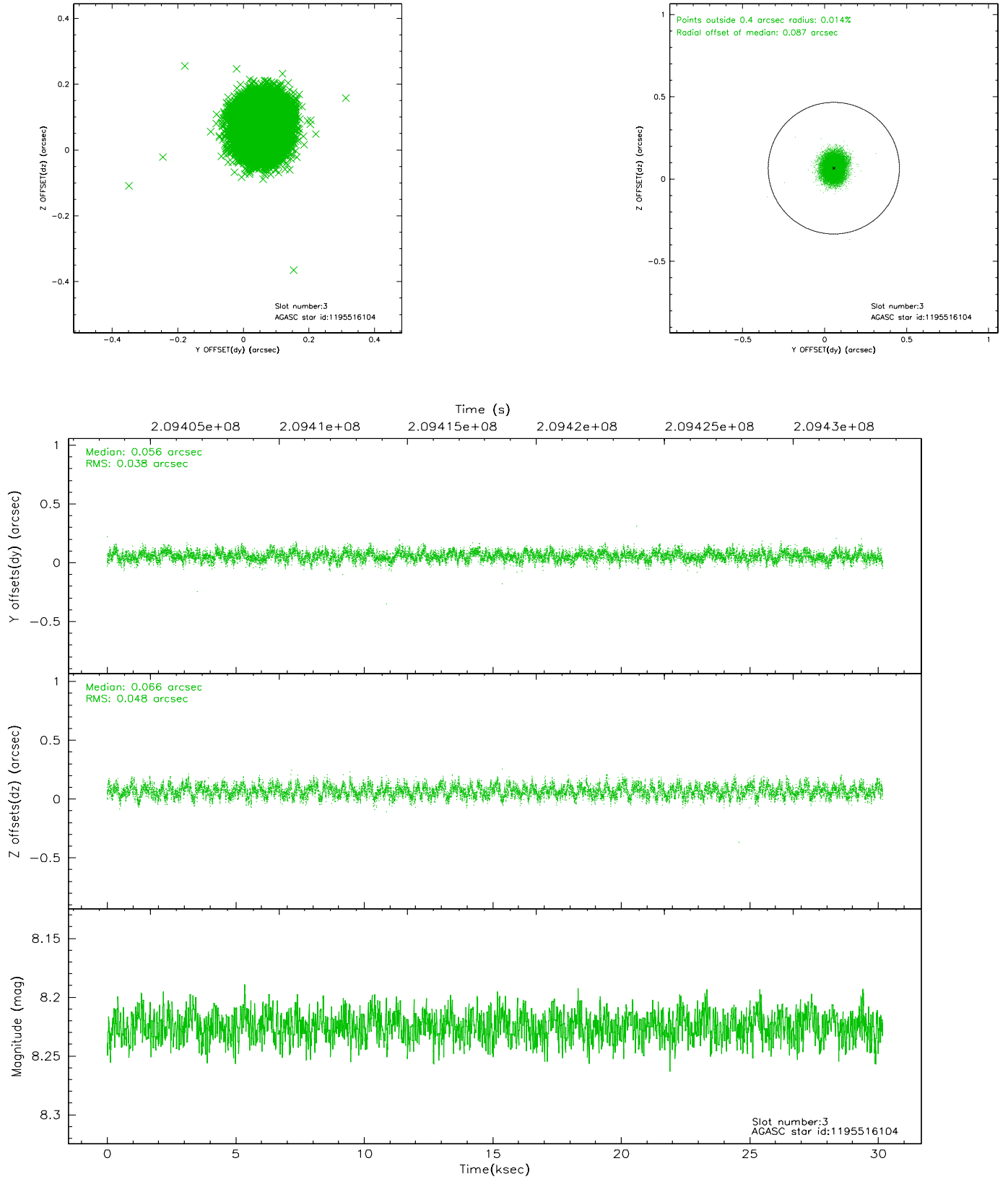


Slot Statistics

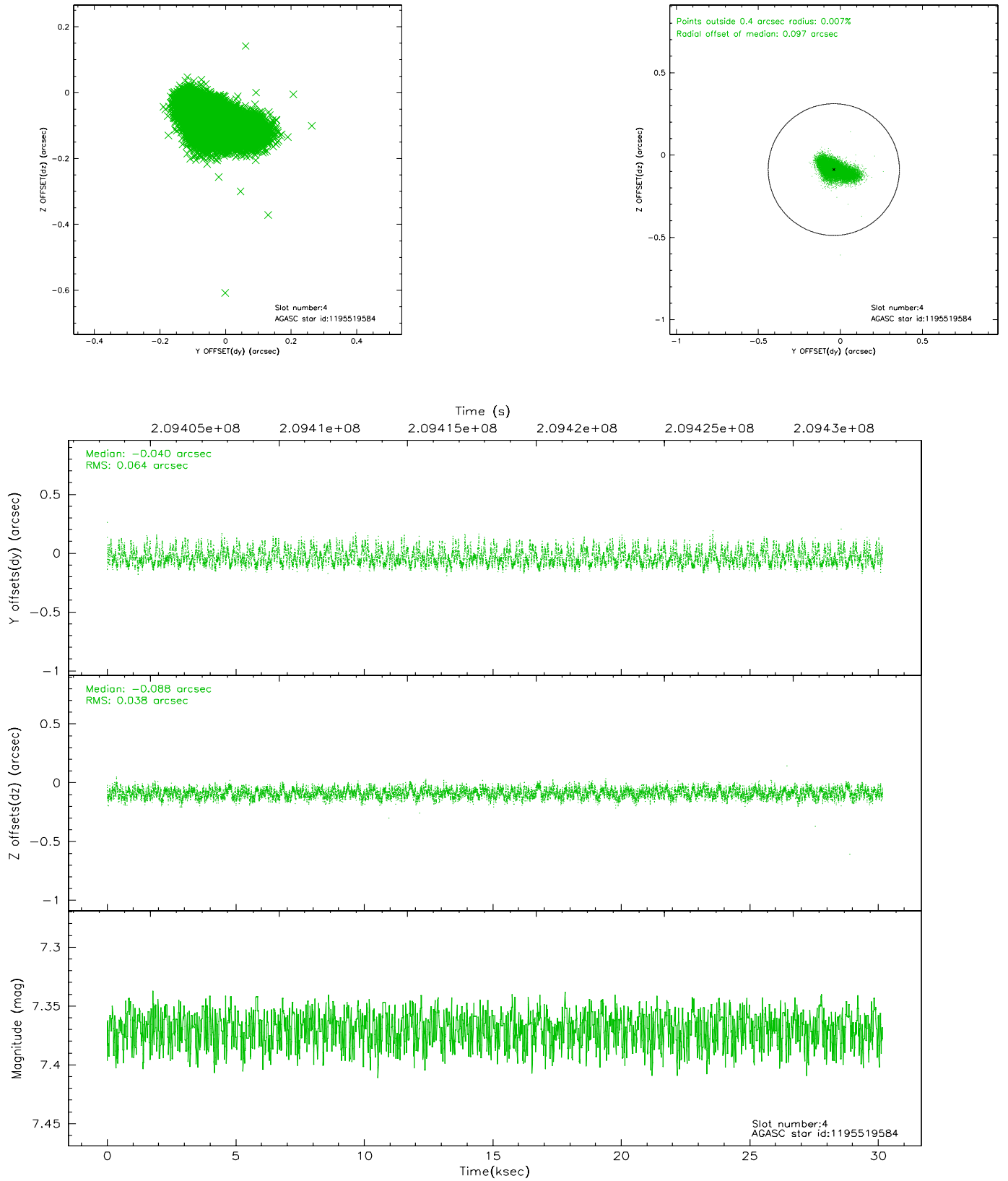
slot	status	id	mag	n_pts	med_dy	med_dz	dr1	dr2	ra	dec	mean_y	mean_z
0	FID	ACIS-I-1	7.24	7361	-0.013	0.038	0.012	0.031	0.000000	0.000000	932.44	-833.66
1	FID	ACIS-I-5	7.23	7362	-0.128	0.019	0.010	0.019	0.000000	0.000000	-1815.73	1063.78
2	FID	ACIS-I-6	7.25	7361	0.051	0.014	0.013	0.026	0.000000	0.000000	397.98	1708.36
3	GUIDE	1195516104	8.22	14716	0.056	0.066	0.065	0.103	342.199615	-64.457745	-487.02	-137.07
4	GUIDE	1195519584	7.37	14720	-0.040	-0.088	0.077	0.132	341.141289	-63.953912	-1634.37	2035.96
5	GUIDE	1196435400	7.73	14722	0.011	-0.081	0.054	0.086	343.317051	-63.764930	1874.81	1793.38
6	GUIDE	1196439480	8.97	14714	0.058	0.063	0.078	0.128	343.915909	-64.377153	2158.85	-586.71
7	GUIDE	1196439840	7.24	14719	-0.096	0.040	0.052	0.086	343.200523	-64.907990	563.77	-2111.45

2.4 Star Slots

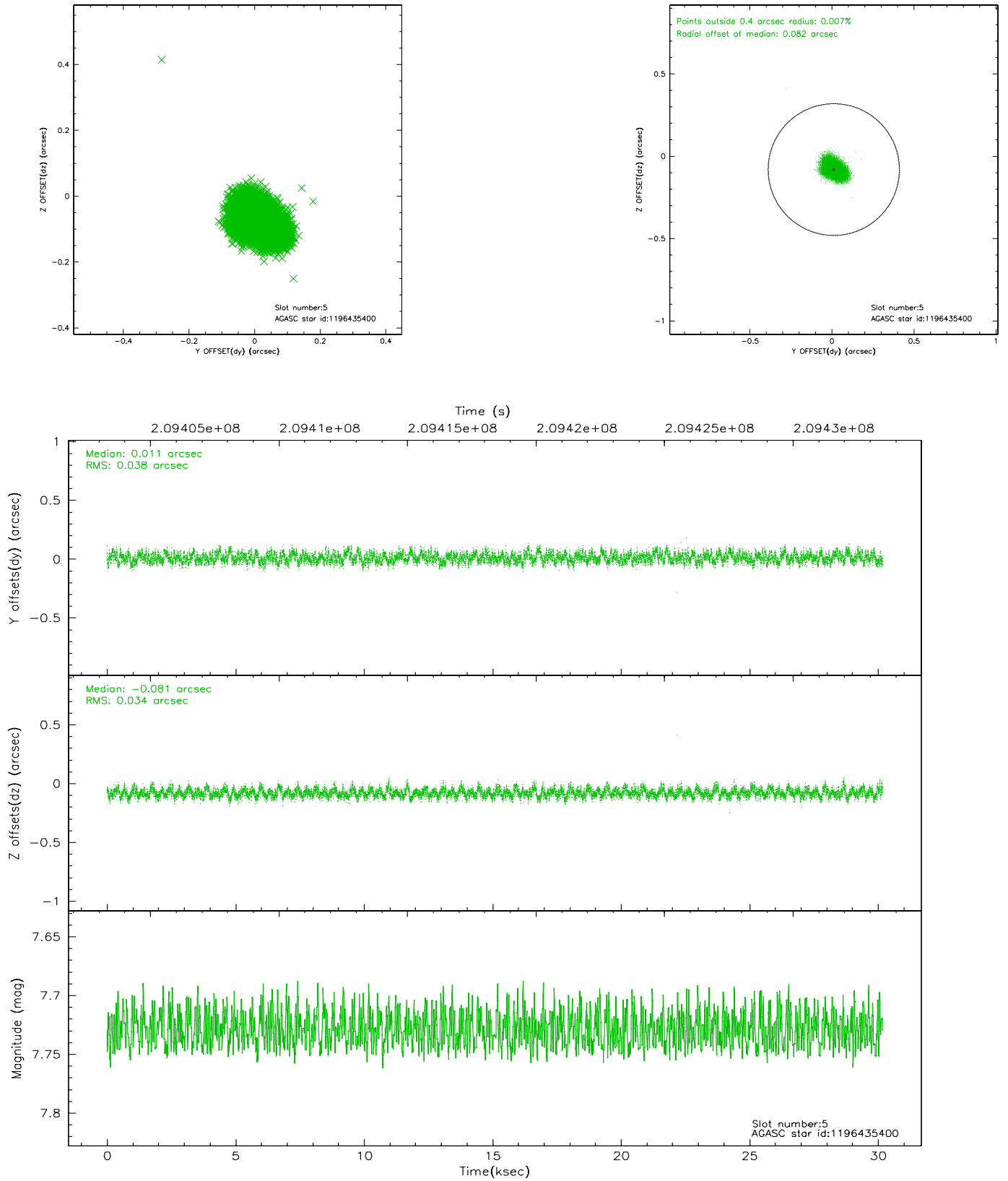
2.4.1 Slot 3



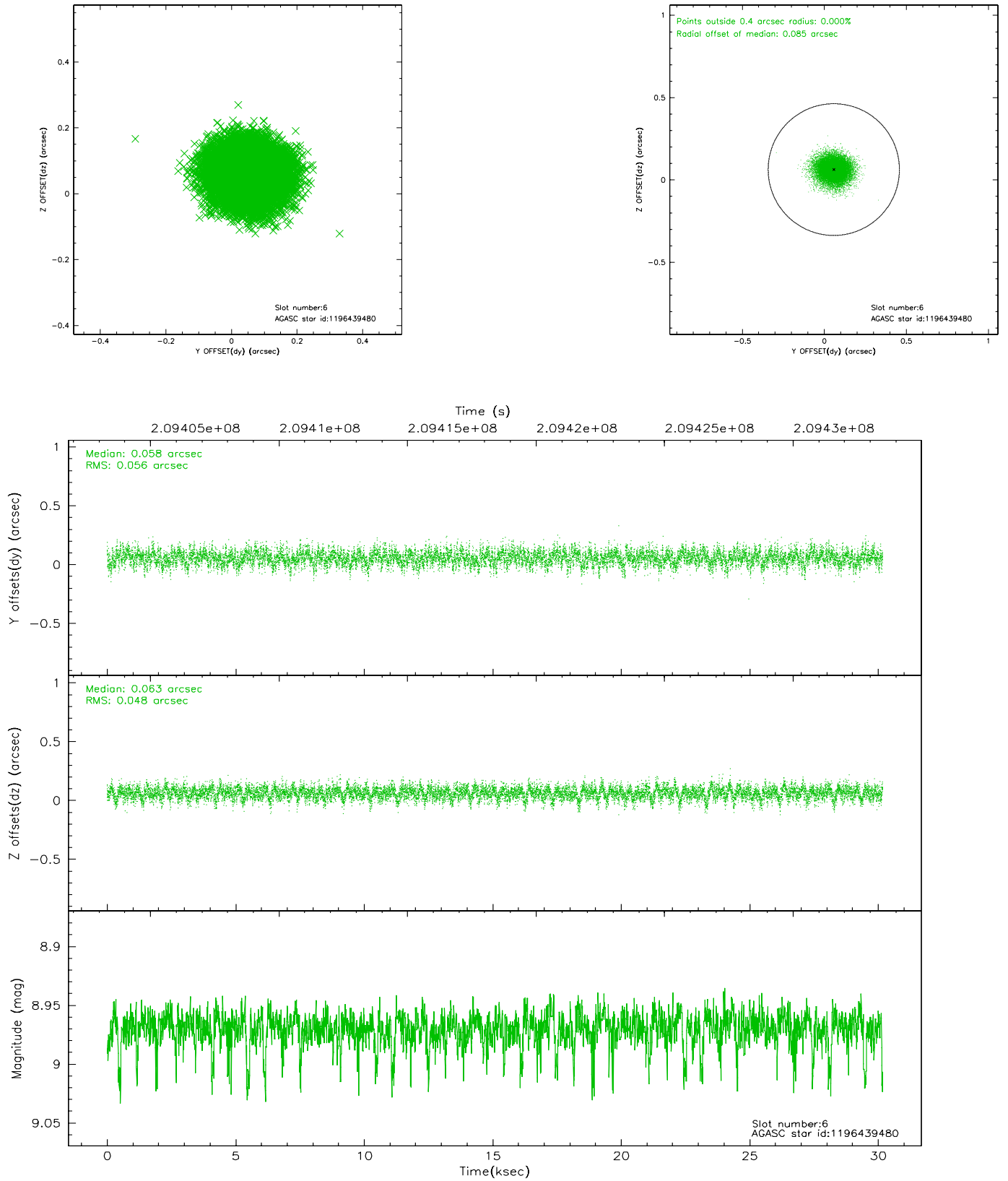
2.4.2 Slot 4



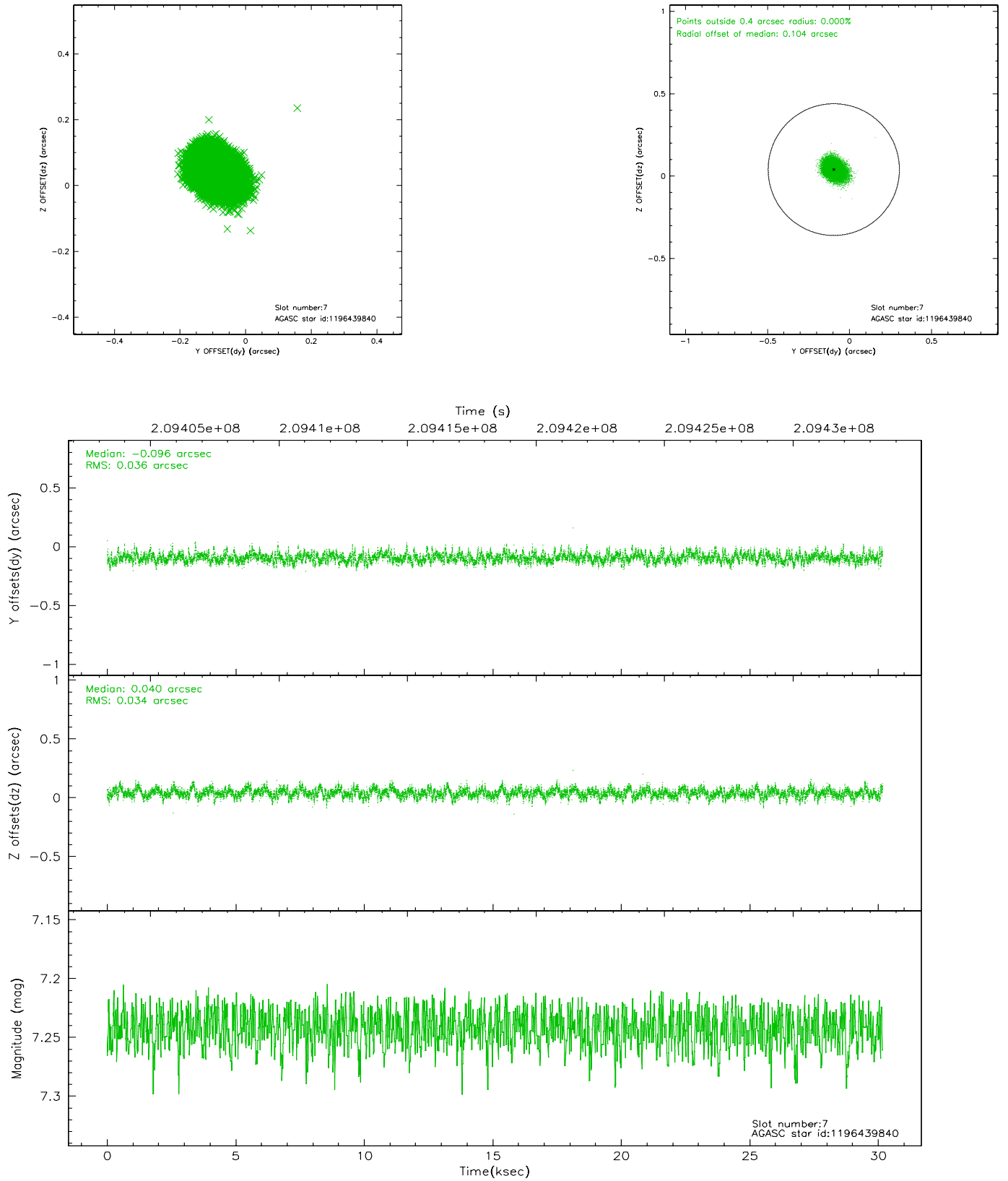
2.4.3 Slot 5



2.4.4 Slot 6

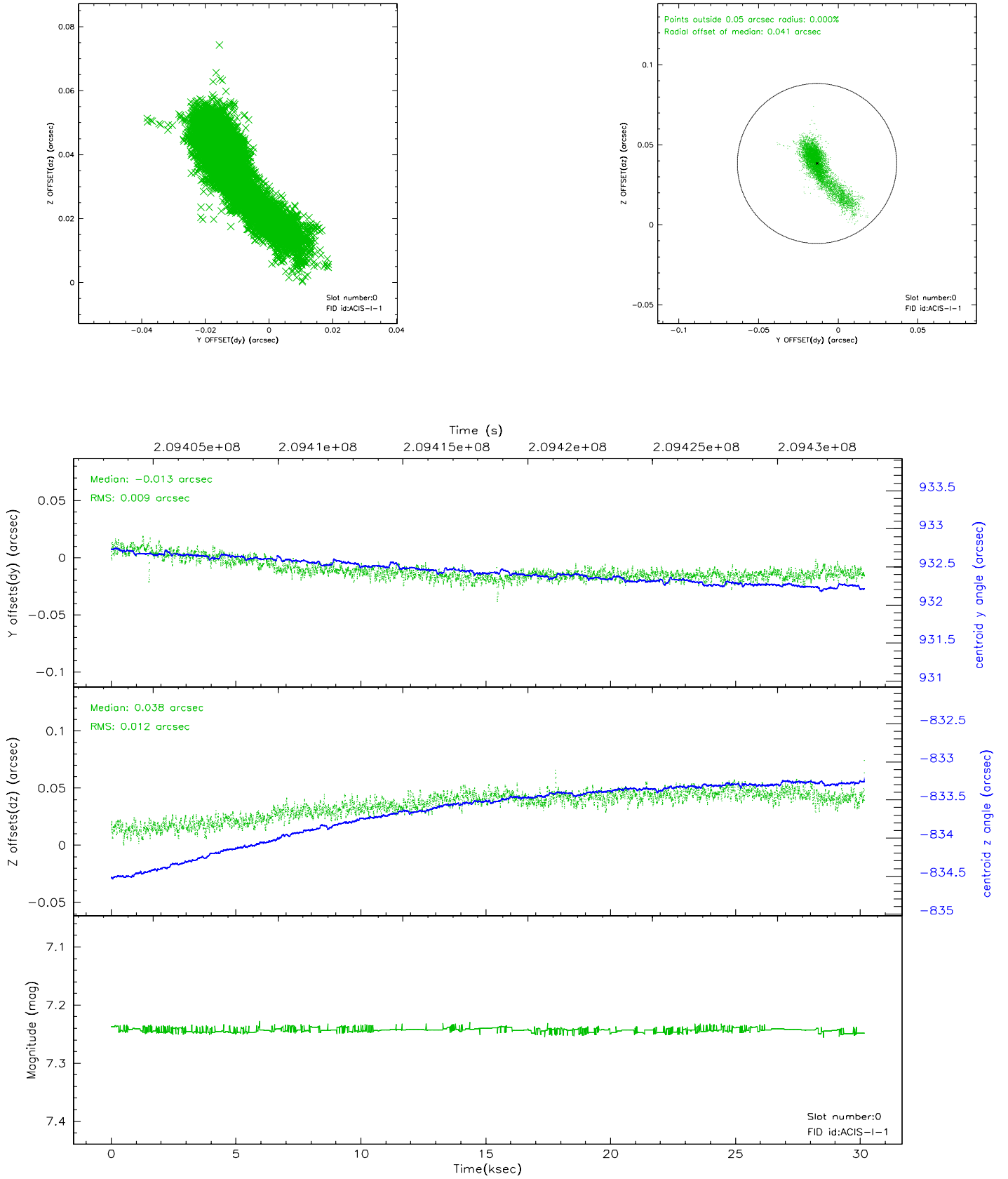


2.4.5 Slot 7

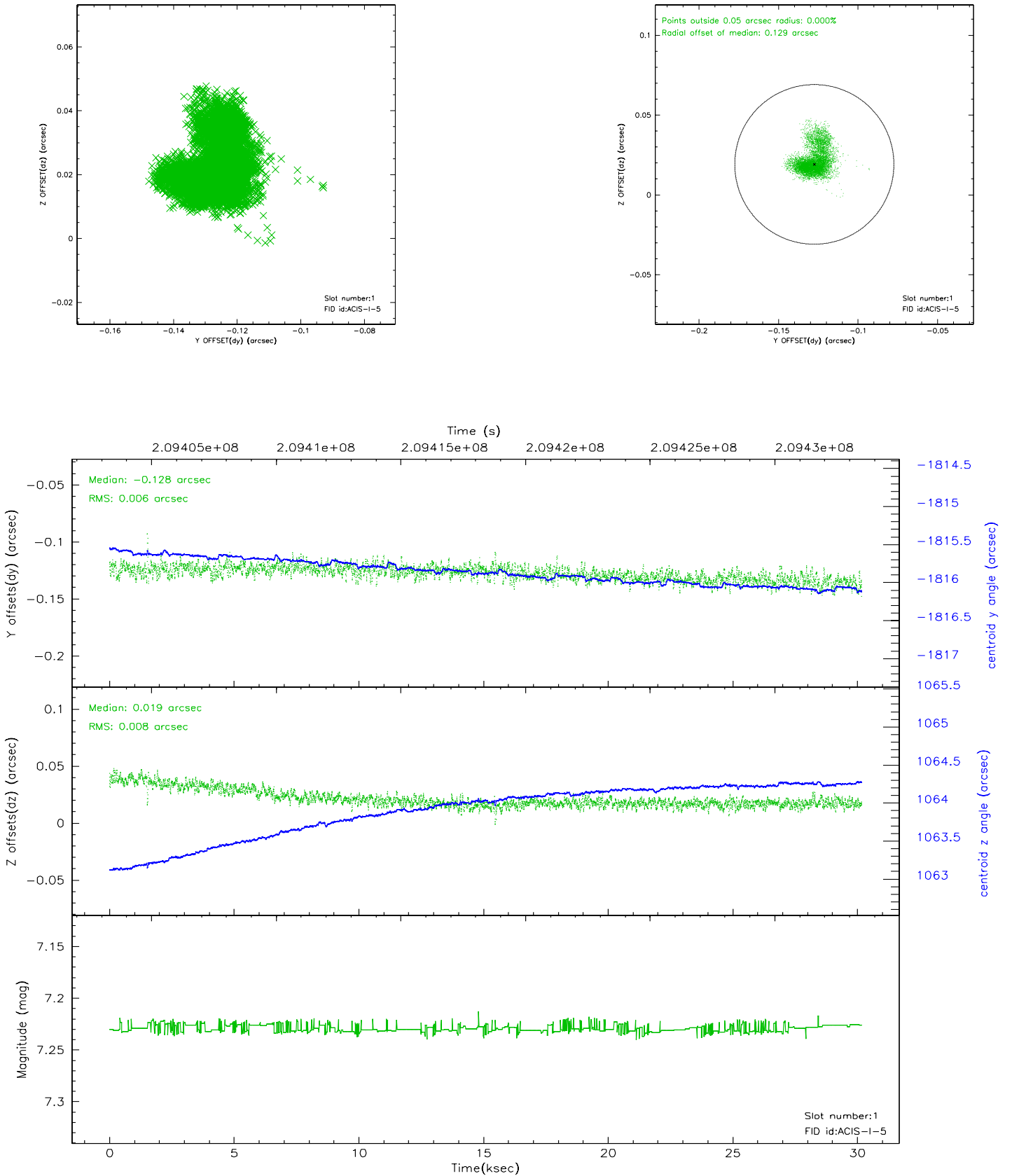


2.5 FID Slots

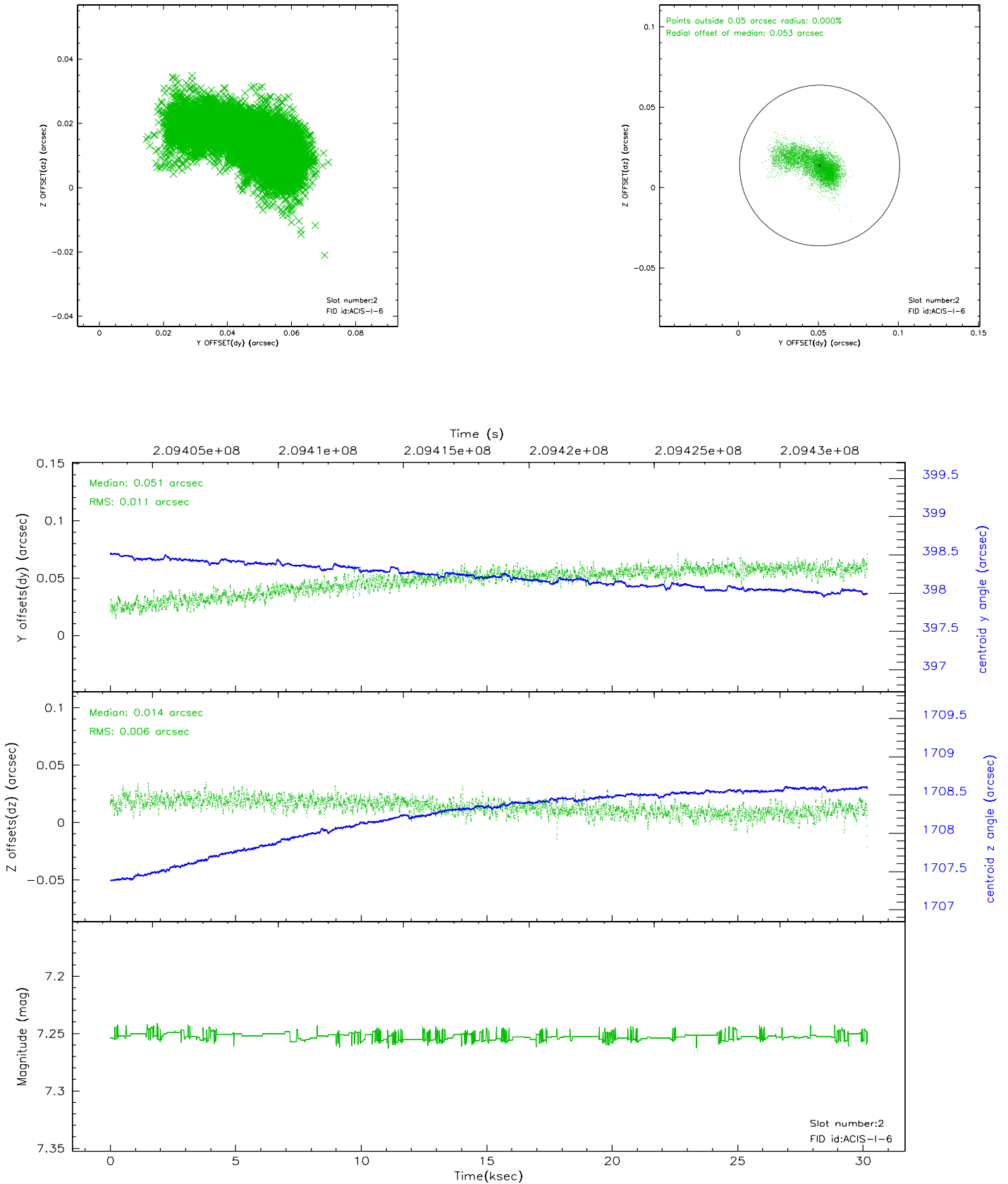
2.5.1 Slot 0



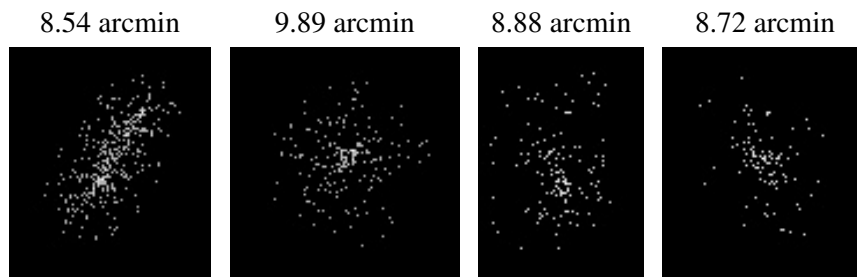
2.5.2 Slot 1



2.5.3 Slot 2



3 Point Sources



A Summary

A.1 Status

V&V Scientist	Jen Lauer
V&V Date (YYYY-MM-DD)	2006.04.25
V&V Edition	1
V&V Disposition and Status	OK
V&V Charge Time	29.762

A.2 Comments