

V&V Reference Report

L2 ASCDS Version : 7.6.8

Observation 4972 - L2 Version 001
Chandra X-Ray Center

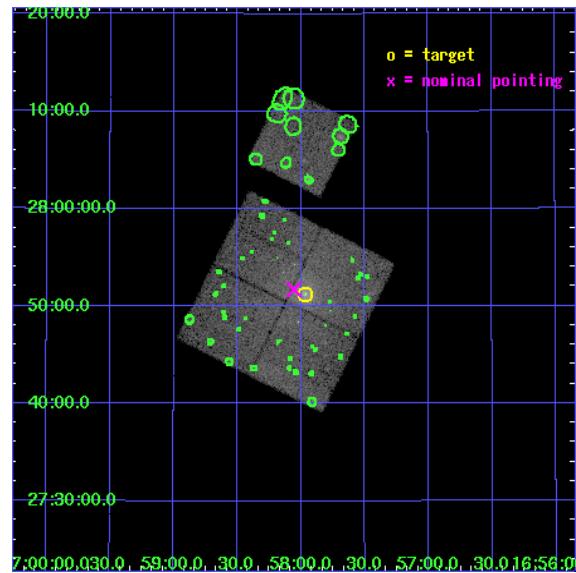
L2 Processing Date : Jun 22 2006

Contents

| | | |
|----------|-------------------------------|-----------|
| 1 | Front | 2 |
| 2 | OBI | 3 |
| 2.1 | OBI | 3 |
| 2.1.1 | Images | 3 |
| 2.1.2 | Bias | 3 |
| 2.1.3 | Parameters | 4 |
| 2.1.4 | Events | 4 |
| 2.2 | Compared Parameters | 5 |
| 2.3 | Aspect | 6 |
| 2.4 | Star Slots | 9 |
| 2.4.1 | Slot 3 | 9 |
| 2.4.2 | Slot 4 | 10 |
| 2.4.3 | Slot 5 | 11 |
| 2.4.4 | Slot 6 | 12 |
| 2.4.5 | Slot 7 | 13 |
| 2.5 | FID Slots | 14 |
| 2.5.1 | Slot 0 | 14 |
| 2.5.2 | Slot 1 | 15 |
| 2.5.3 | Slot 2 | 16 |
| 3 | Point Sources | 17 |
| A | Summary | 18 |
| A.1 | Status | 18 |
| A.2 | Comments | 18 |

1 Front

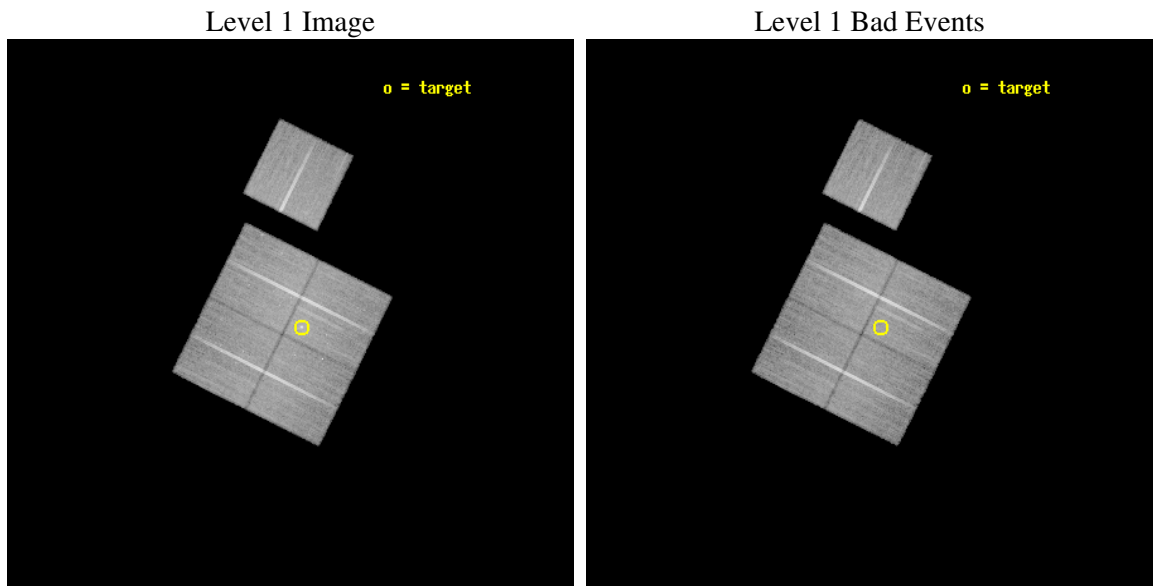
| | |
|----------|---|
| seq_num | 800417 |
| obs_id | 4972 |
| title | Testing Formation Models and Heating and Feedback Mechanisms In Galaxy Groups |
| observer | Dr. William Forman |
| object | NGC6269 |
| dtcycle | 0 |
| cycle | P |
| ra_targ | 254.492083 |
| dec_targ | 27.854444 |
| ra_nom | 254.51420007275 |
| dec_nom | 27.86211450072 |
| roll_nom | 26.539052746068 |
| revision | 2 |
| ontime | 40160.458932638 |
| livetime | 39635.732970984 |
| ontime0 | 40163.599922776 |
| ontime1 | 40154.176992089 |
| ontime2 | 40157.31799233 |
| ontime3 | 40160.458932638 |
| ontime6 | 40157.317962408 |
| l2events | 111309 |



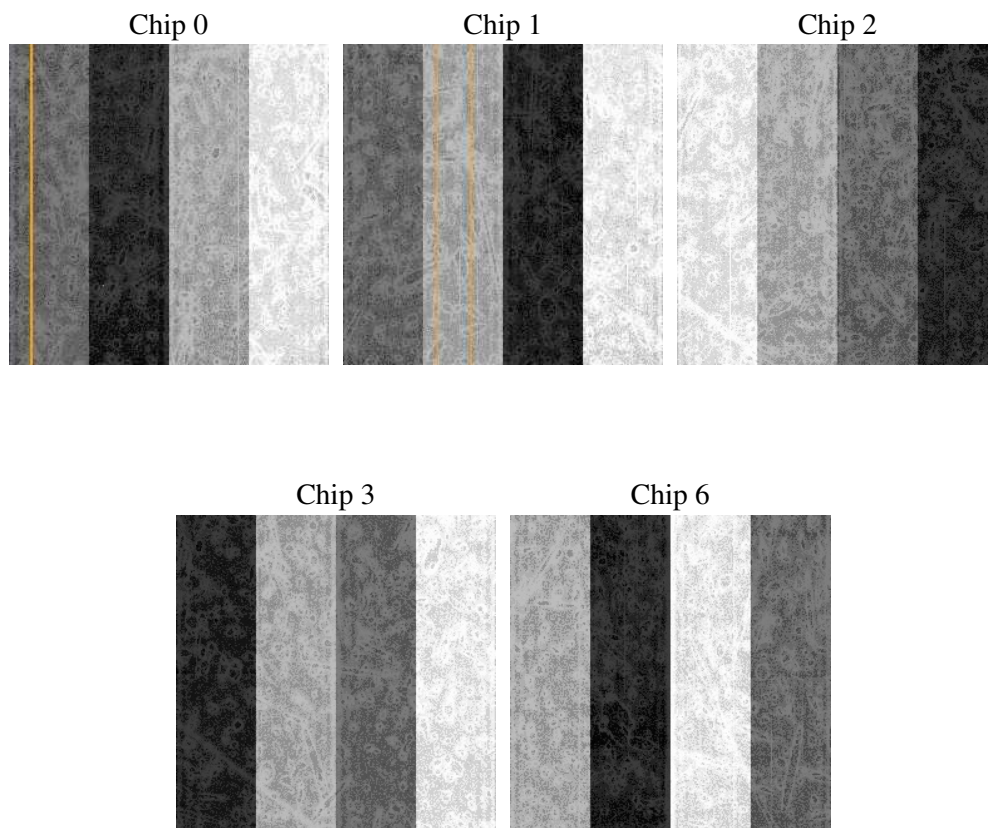
2 OBI

2.1 OBI

2.1.1 Images



2.1.2 Bias



2.1.3 Parameters

| | |
|----------|---------------------|
| obi_num | 0 |
| ascdsver | 7.6.8 |
| caldbver | 3.2.2 |
| date | 2006-06-22T15:44:59 |
| revision | 2 |

| | |
|----------------|-----------------|
| sched_exp_time | 40000.000000 |
| ontime | 41995.188116133 |
| ontime0 | 41998.329106271 |
| ontime1 | 41988.906175584 |
| ontime2 | 41992.047175825 |
| ontime3 | 41995.188116133 |
| ontime6 | 41992.047145903 |
| l1events | 1083939 |

2.1.4 Events

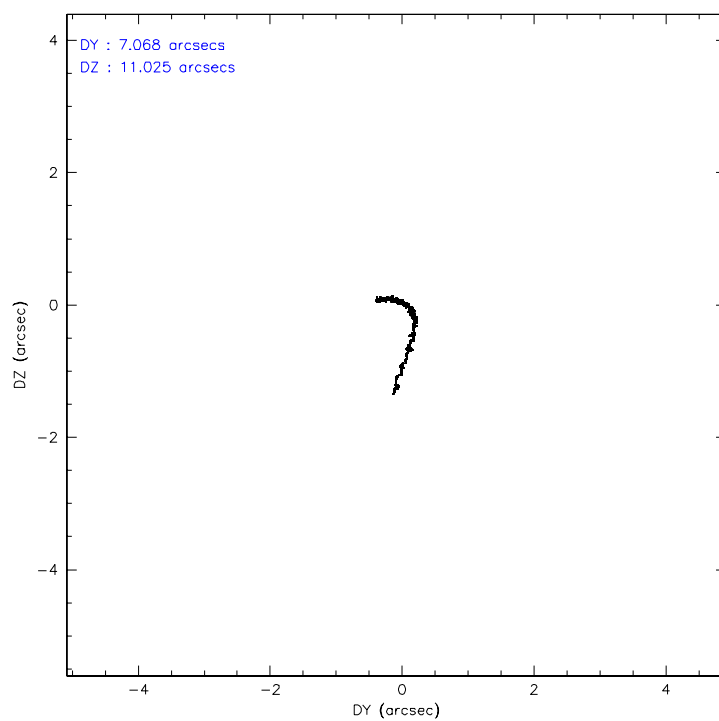
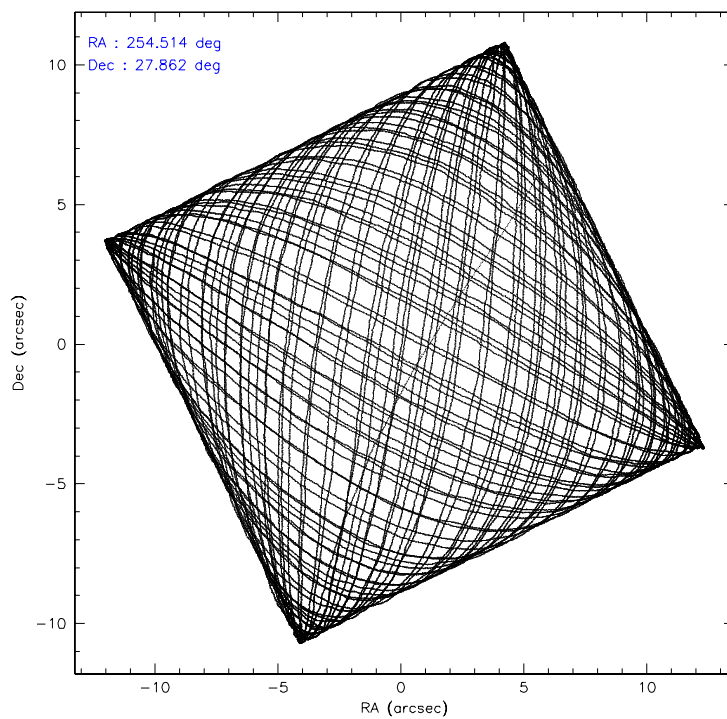
| | ccd 0 | ccd 1 | ccd 2 | ccd 3 | ccd 6 |
|-----------------|--------|--------|--------|--------|--------|
| level 1 events | 200843 | 206171 | 230909 | 226081 | 219935 |
| rejected events | 177234 | 178302 | 205243 | 194780 | 198199 |
| rejected % | 88% | 86% | 88% | 86% | 90% |

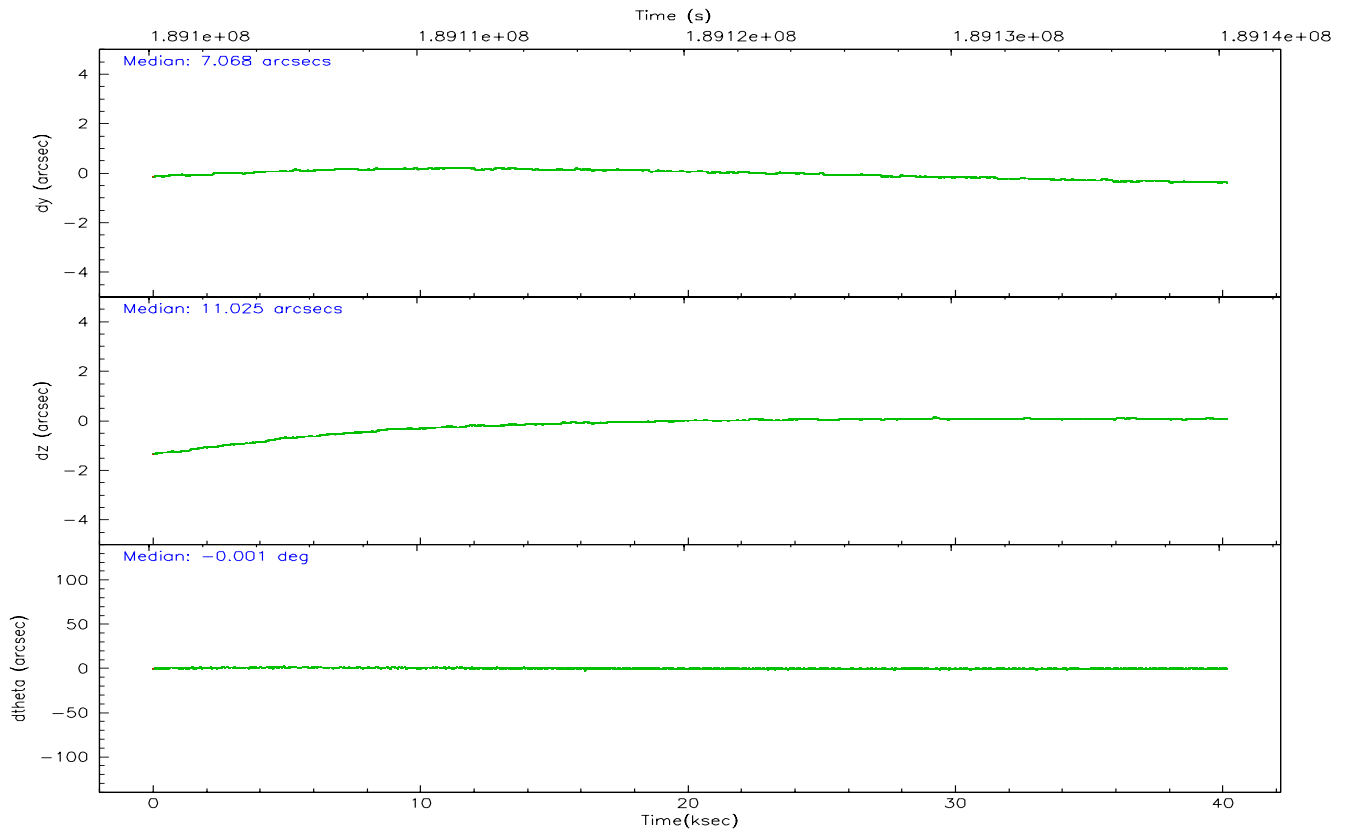
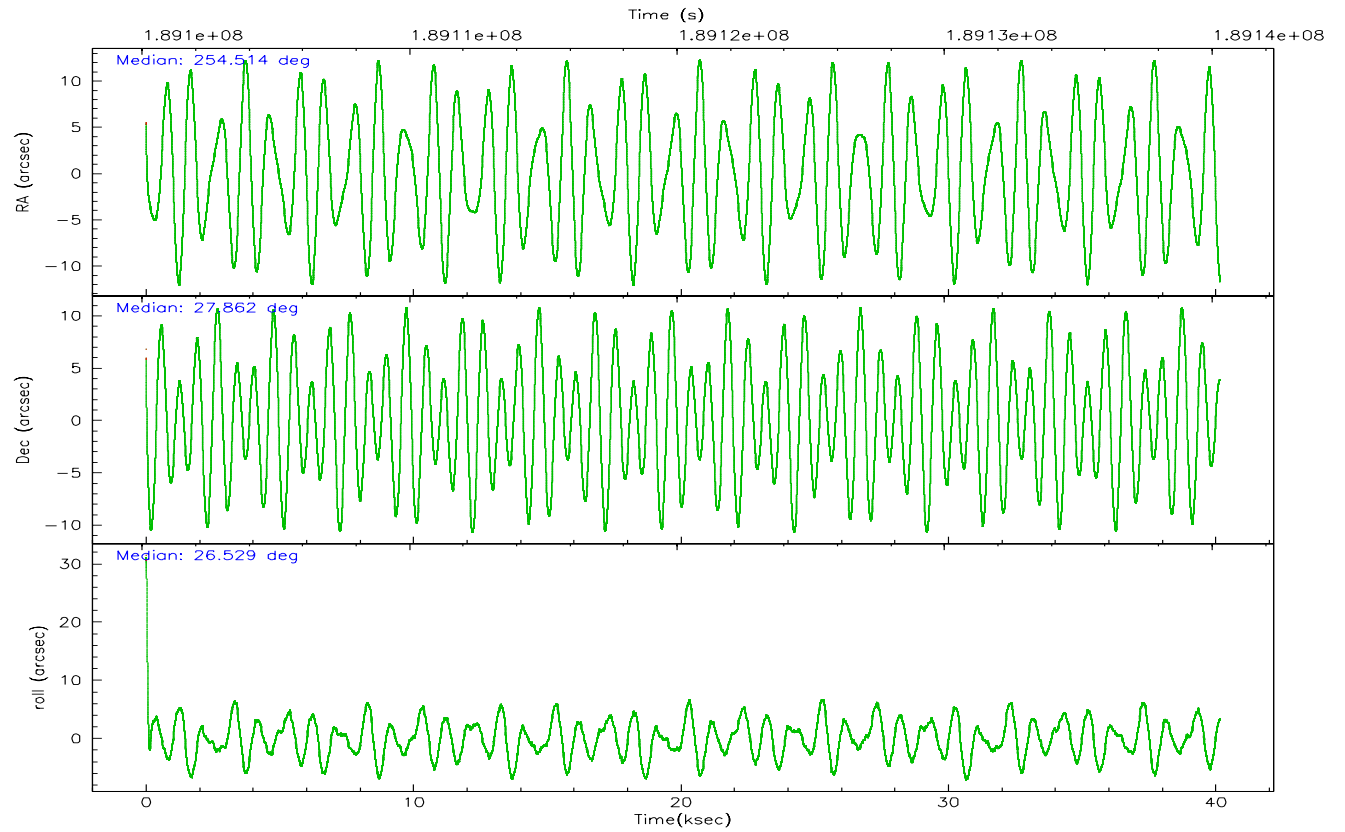
| | ccd 0 | ccd 1 | ccd 2 | ccd 3 | ccd 6 |
|----------------|--------|--------|--------|--------|--------|
| grade 0 events | 9938 | 12500 | 12185 | 17235 | 8068 |
| | 4% | 6% | 5% | 7% | 3% |
| grade 1 events | 108 | 124 | 133 | 153 | 80 |
| | 0% | 0% | 0% | 0% | 0% |
| grade 2 events | 5244 | 5672 | 5366 | 5287 | 4765 |
| | 2% | 2% | 2% | 2% | 2% |
| grade 3 events | 2576 | 2908 | 2398 | 2764 | 2518 |
| | 1% | 1% | 1% | 1% | 1% |
| grade 4 events | 2487 | 2789 | 2543 | 2707 | 2527 |
| | 1% | 1% | 1% | 1% | 1% |
| grade 5 events | 7709 | 8225 | 7260 | 8733 | 8742 |
| | 3% | 3% | 3% | 3% | 3% |
| grade 6 events | 4326 | 5025 | 4065 | 4229 | 4837 |
| | 2% | 2% | 1% | 1% | 2% |
| grade 7 events | 168455 | 168928 | 196959 | 184973 | 188398 |
| | 83% | 81% | 85% | 81% | 85% |

2.2 Compared Parameters

| Parameter | Planned | Actual | Parameter | Planned | Actual |
|-----------------------------------|---------------------|----------------------|---------------------------------|-----------|---------|
| Instrument | ACIS | ACIS | Obspar format version number | 6 | 6 |
| Detector | ACIS-01236 | ACIS-01236 | Obspar file type | PREDICTED | ACTUAL |
| Grating | NONE | NONE | Obspar update status | NONE | UPDATED |
| Data mode | VFAINT | VFAINT | On-chip summing requested | N | N |
| Observation mode | POINTING | POINTING | Subarray requested | NONE | NONE |
| Pointing RA | 254.497246 | 254.5142000727536 | Alternating exposures requested | N | N |
| Pointing Dec | 27.839219 | 27.8621145007198 | Primary exposure time | 0.000000 | 3.1 |
| Pointing Roll | 26.338271 | 26.53905274606766 | | | |
| SIM focus pos (mm) | -0.782348 | -0.7809083437167272 | | | |
| SIM defocus (mm) | 0 | 0.001439871863259334 | | | |
| SIM translation stage pos (mm) | -231.092463 | -231.0932336816812 | | | |
| SIM translation stage offset (mm) | -2.5 | -2.499219321248518 | | | |
| Observation start time | 189100309.184000 | 189098309.35158 | | | |
| Observation start date | 2003-12-29T15:50:45 | 2003-12-29T15:18:29 | | | |
| Observation end time | 189140309.184000 | 189141204.06594 | | | |
| Observation end date | 2003-12-30T02:57:25 | 2003-12-30T03:13:24 | | | |
| Read mode | TIMED | TIMED | | | |

2.3 Aspect



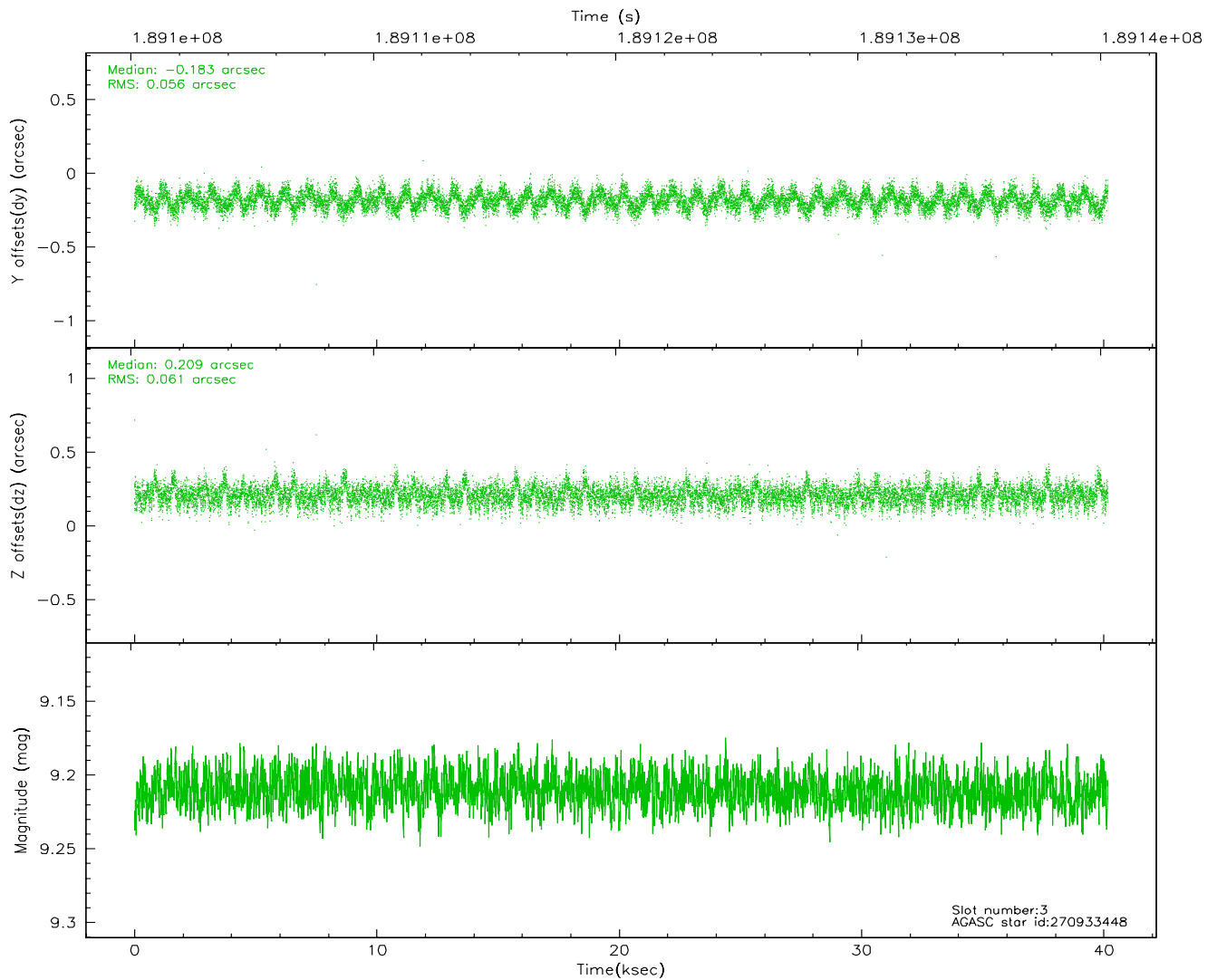
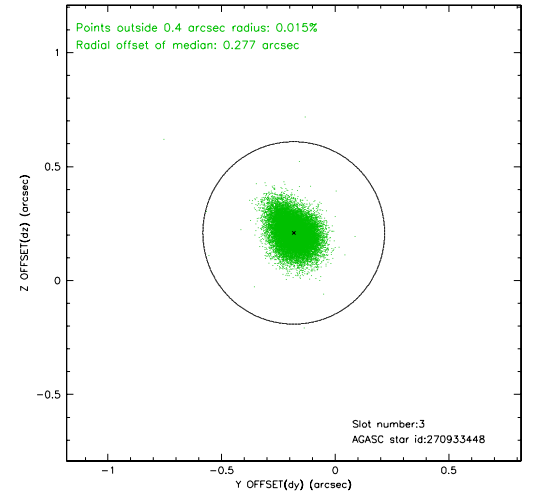
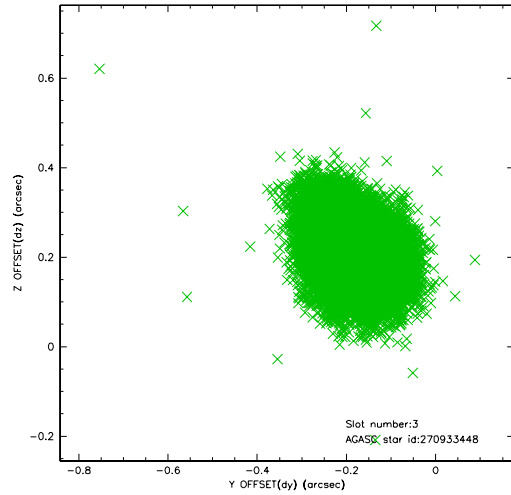


Slot Statistics

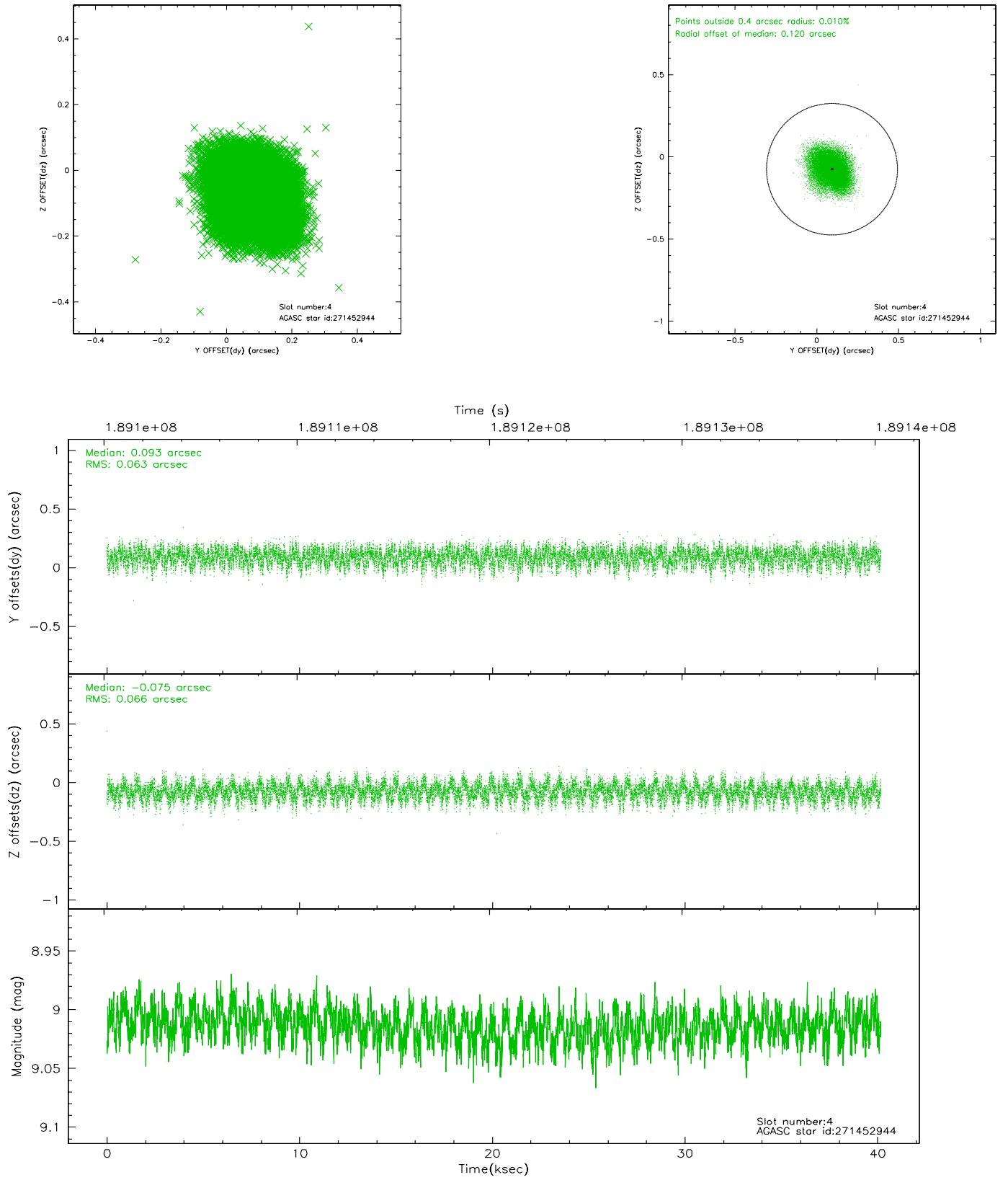
| slot | status | id | mag | n_pts | med_dy | med_dz | dr1 | dr2 | ra | dec | mean_y | mean_z |
|------|--------|-----------|------|-------|--------|--------|-------|-------|------------|-----------|----------|----------|
| 0 | FID | ACIS-I-1 | 7.23 | 9796 | 0.009 | 0.027 | 0.014 | 0.034 | 0.000000 | 0.000000 | 932.59 | -885.56 |
| 1 | FID | ACIS-I-5 | 7.23 | 9798 | -0.119 | 0.044 | 0.009 | 0.014 | 0.000000 | 0.000000 | -1815.60 | 1011.99 |
| 2 | FID | ACIS-I-6 | 7.25 | 9798 | 0.019 | -0.001 | 0.012 | 0.038 | 0.000000 | 0.000000 | 398.17 | 1656.43 |
| 3 | GUIDE | 270933448 | 9.21 | 19590 | -0.183 | 0.209 | 0.088 | 0.143 | 254.929117 | 27.410049 | 552.87 | -1994.37 |
| 4 | GUIDE | 271452944 | 9.01 | 19589 | 0.093 | -0.075 | 0.098 | 0.158 | 254.218451 | 28.321718 | -20.65 | 1949.73 |
| 5 | GUIDE | 271453792 | 7.62 | 19593 | 0.020 | -0.155 | 0.072 | 0.114 | 253.729889 | 28.137131 | -1704.04 | 2048.86 |
| 6 | GUIDE | 270935240 | 8.15 | 19592 | -0.021 | 0.010 | 0.062 | 0.098 | 254.043878 | 27.205763 | -2311.13 | -1397.41 |
| 7 | GUIDE | 271064712 | 9.44 | 19581 | 0.092 | 0.013 | 0.137 | 0.225 | 255.474964 | 27.513344 | 2283.44 | -2424.79 |

2.4 Star Slots

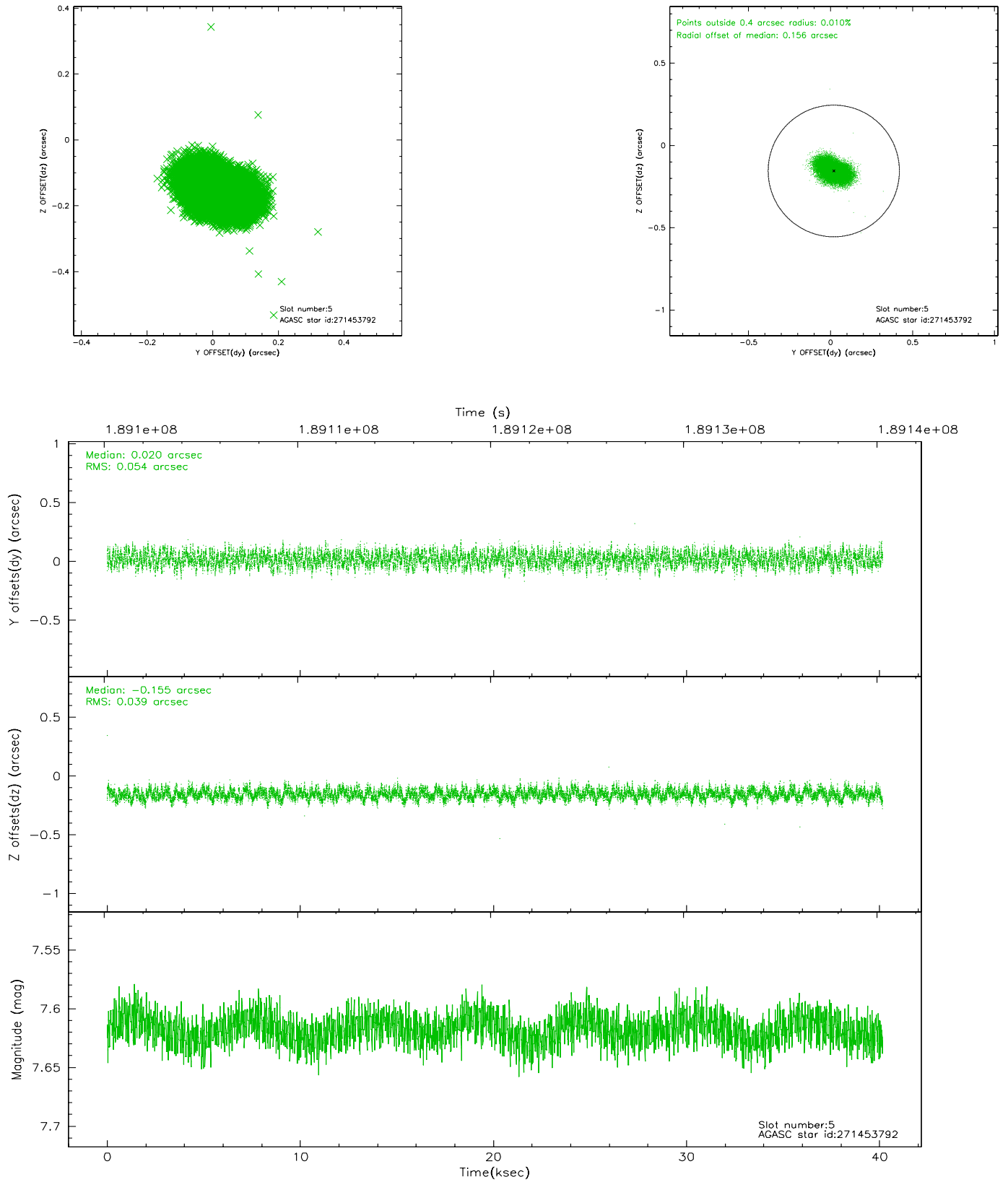
2.4.1 Slot 3



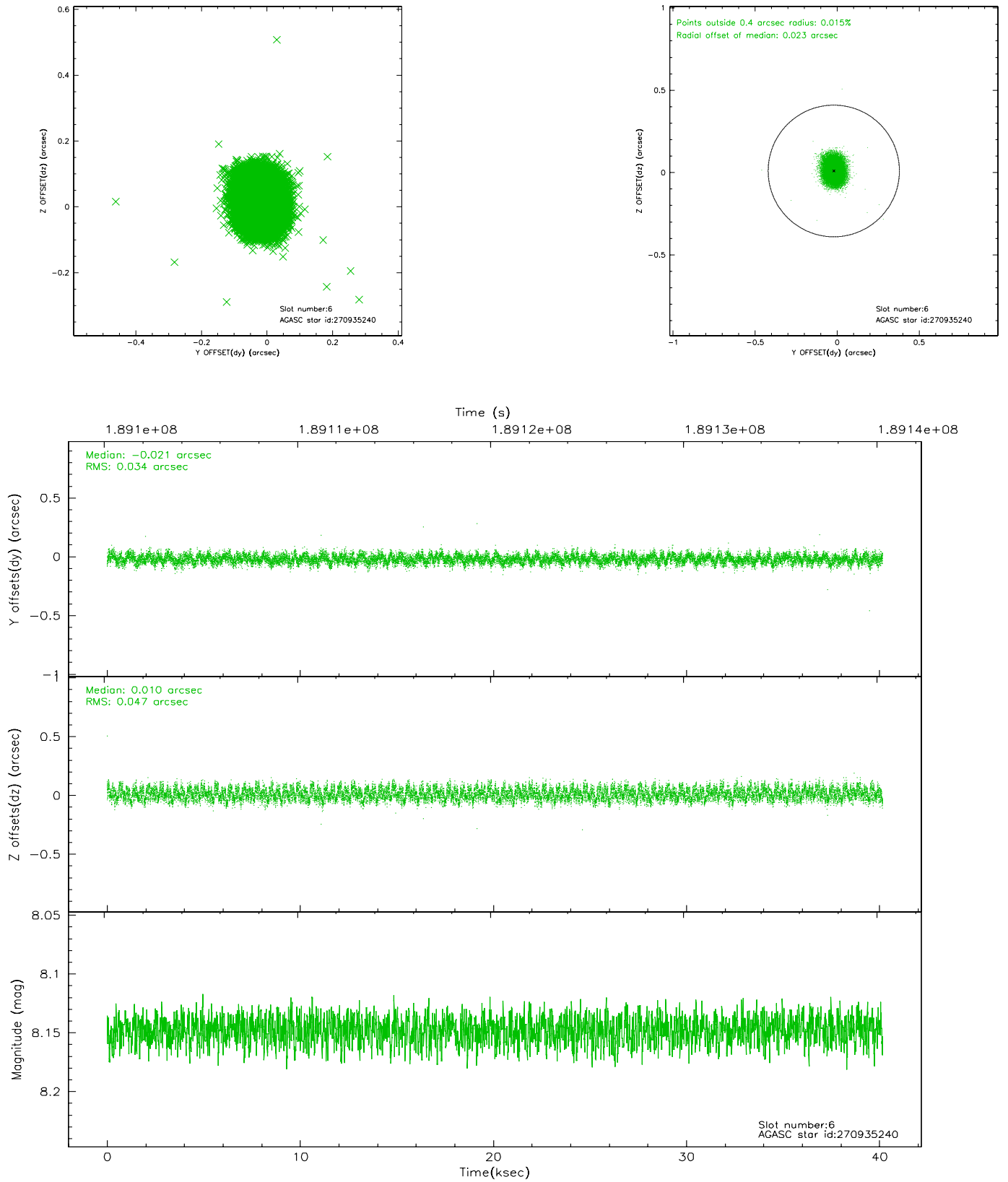
2.4.2 Slot 4



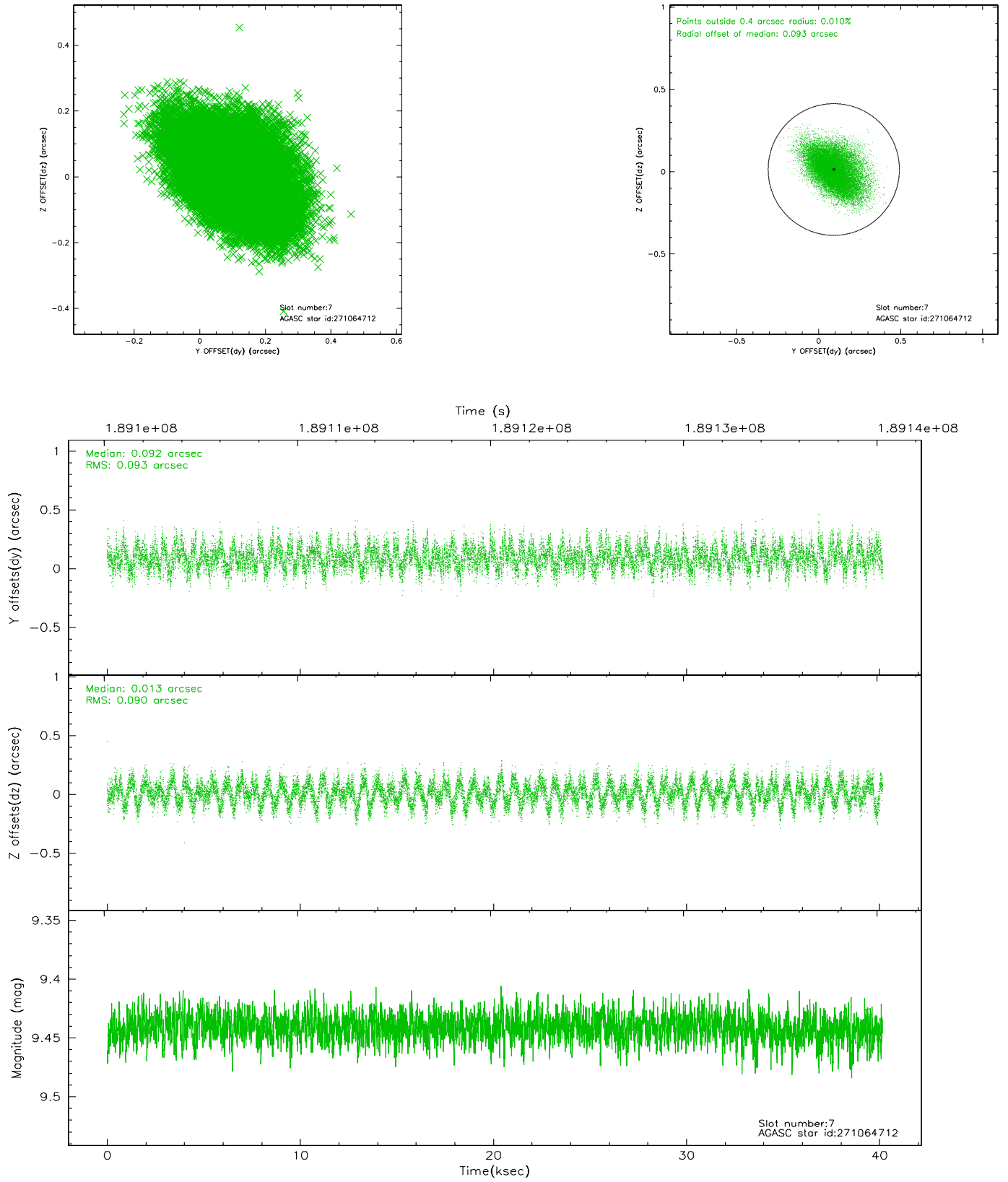
2.4.3 Slot 5



2.4.4 Slot 6

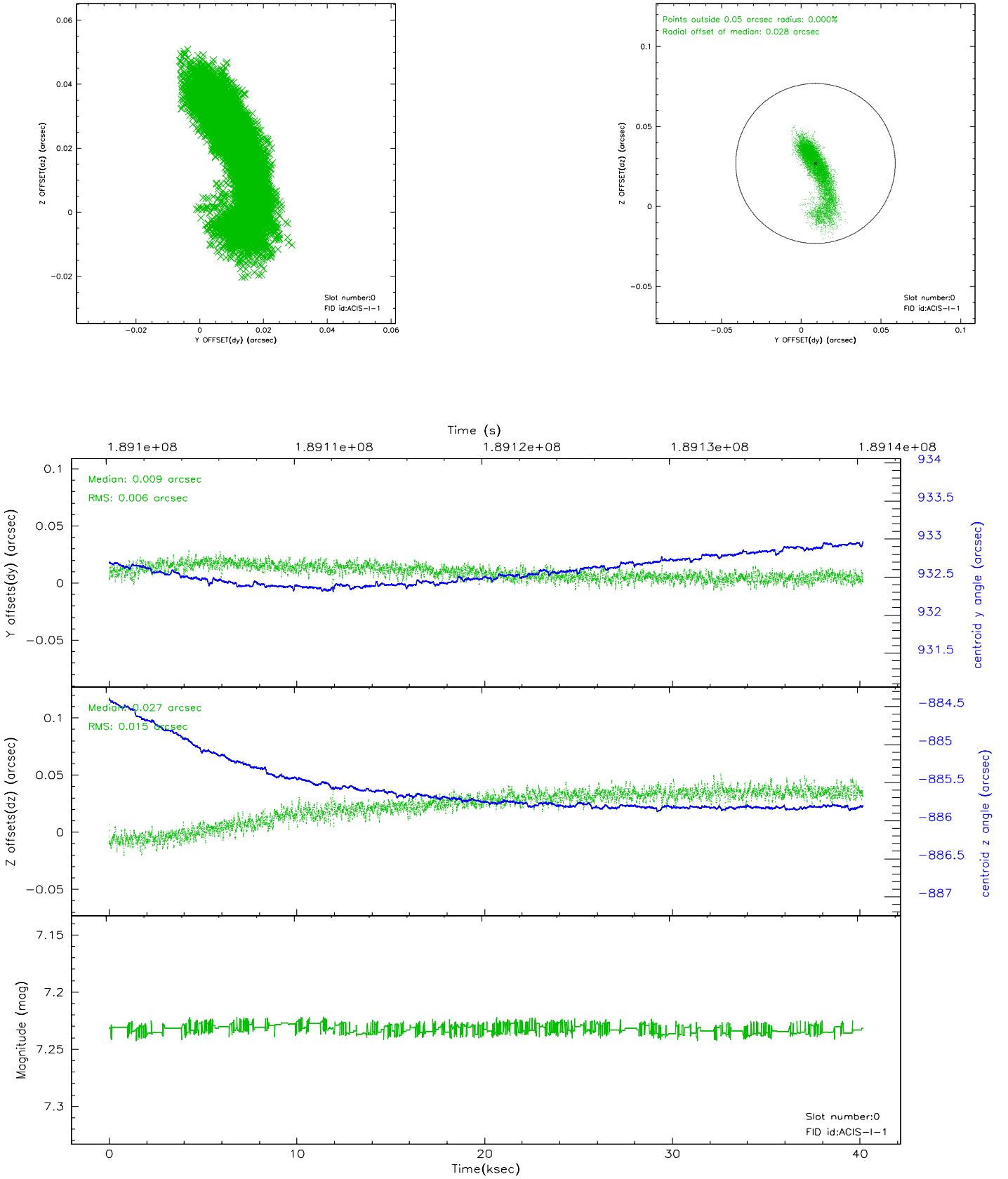


2.4.5 Slot 7

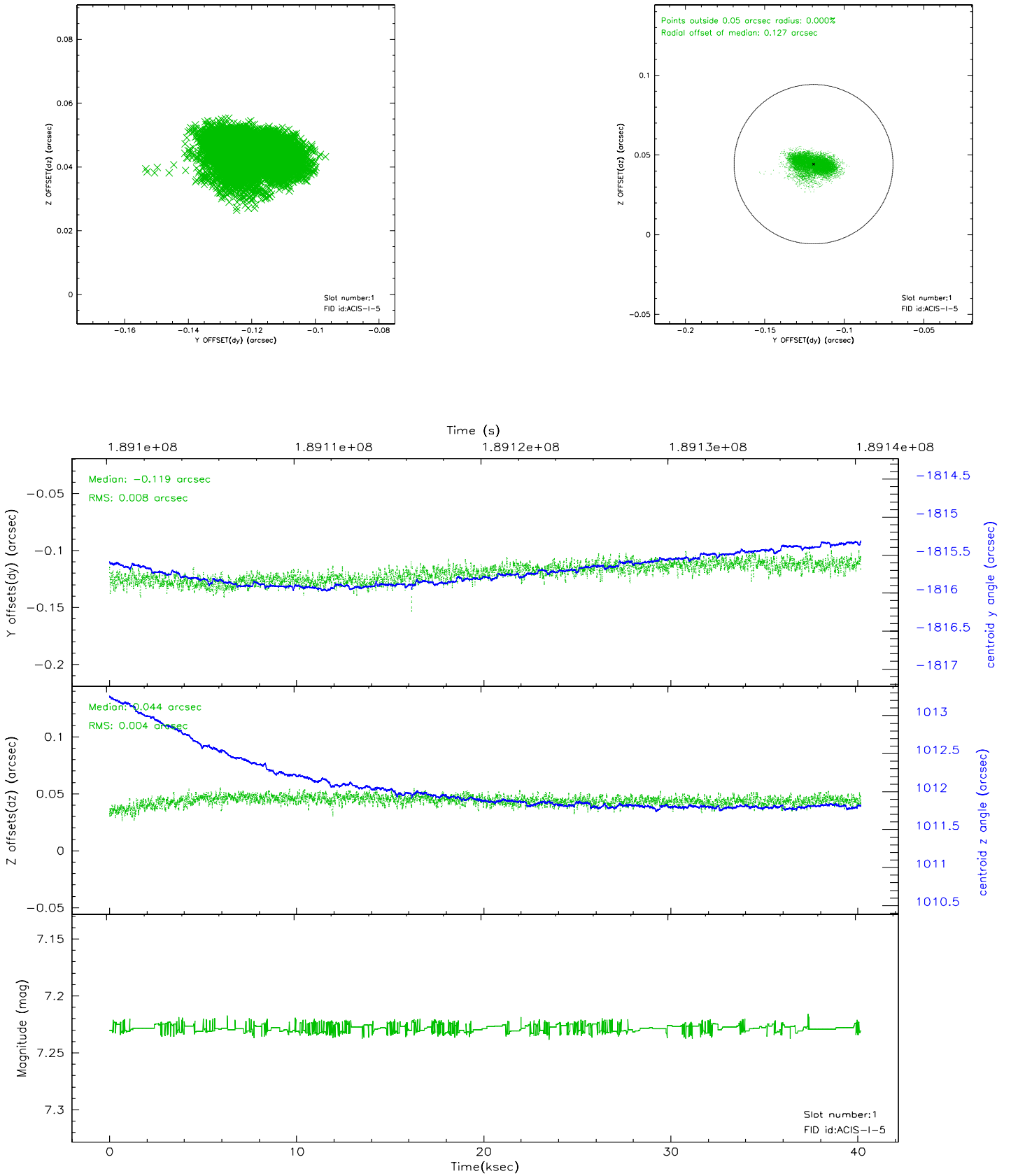


2.5 FID Slots

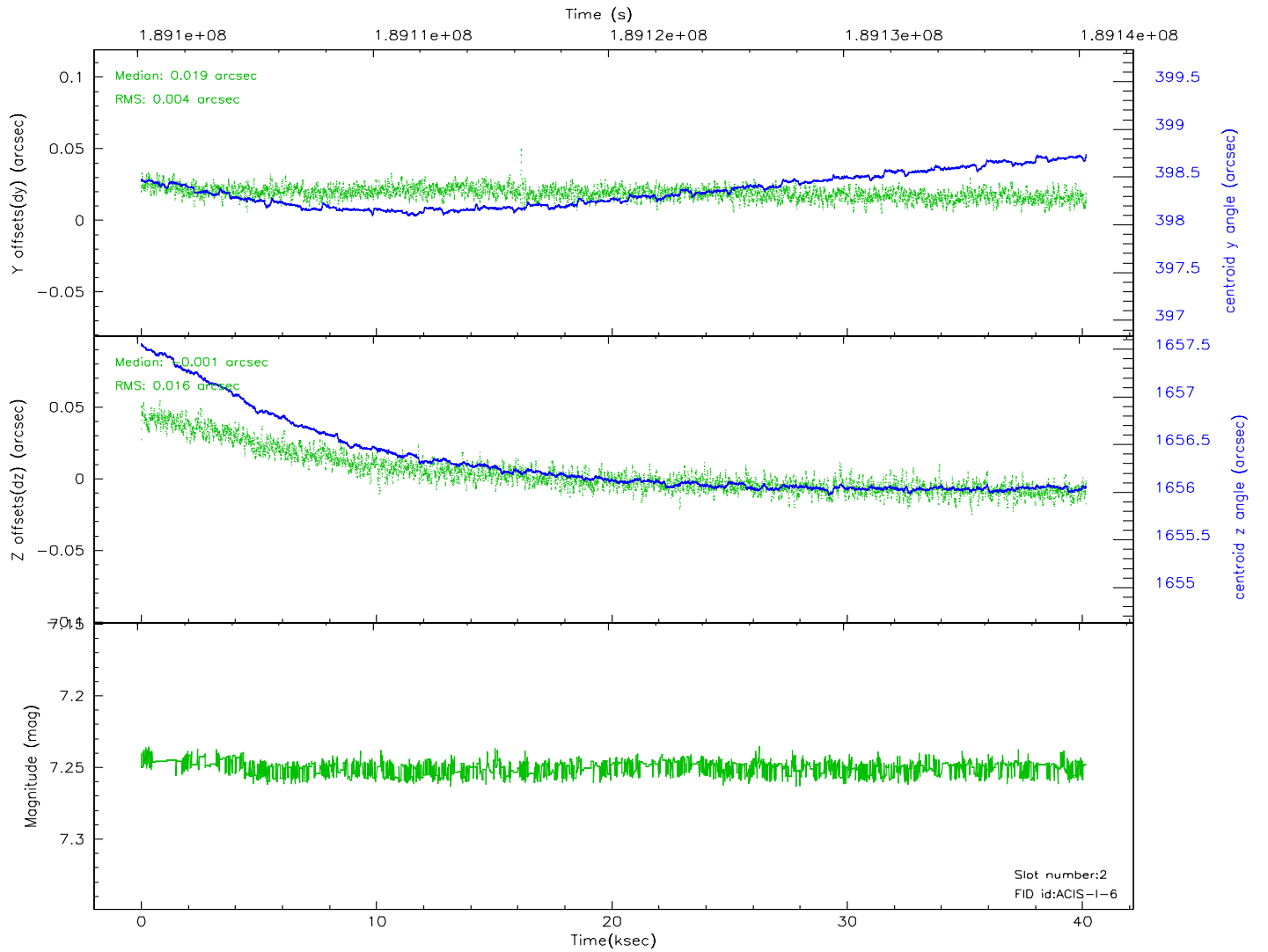
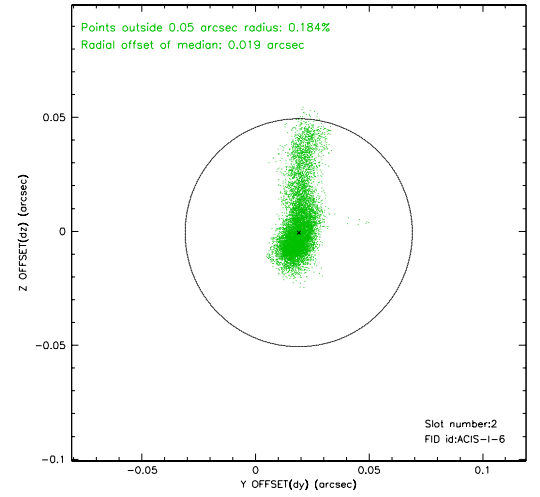
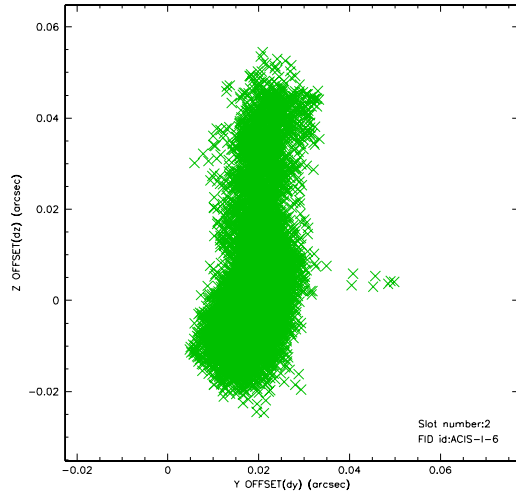
2.5.1 Slot 0



2.5.2 Slot 1



2.5.3 Slot 2



3 Point Sources

4.99 arcmin



3.37 arcmin



9.45 arcmin



7.15 arcmin



A Summary

A.1 Status

| | |
|----------------------------|------------|
| V&V Scientist | Jen Lauer |
| V&V Date (YYYY-MM-DD) | 2006.06.22 |
| V&V Edition | 1 |
| V&V Disposition and Status | OK |
| V&V Charge Time | 40.16 |

A.2 Comments

On day 356 at about 00:30, the OBA heater stuck in the 'on' position. This situation affected obsid 4901 and all subsequent observations to this point. The result of this anomaly could be a displacement of the target on the chip in the z direction. The displacement will be small because everything is still within spec, but the target may be spatially displaced, have a different point spread function, or trail across the chip.