

V&V Reference Report

L2 ASCDS Version : 7.6.7.2

Observation 4965 - L2 Version 001
Chandra X-Ray Center

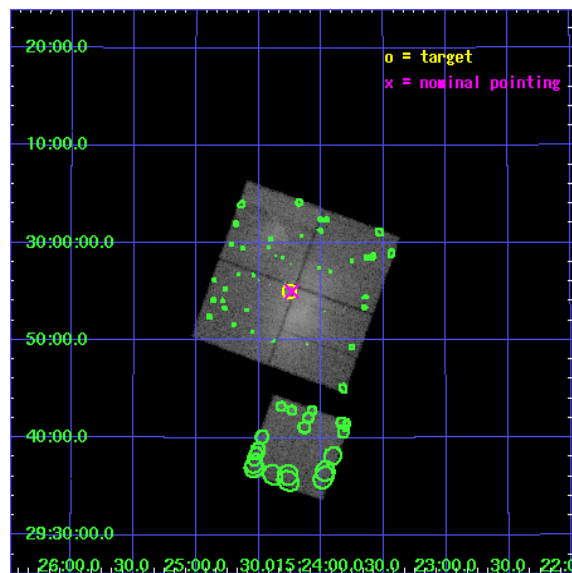
L2 Processing Date : May 15 2006

Contents

1	Front	2
2	OBI	3
2.1	OBI	3
2.1.1	Images	3
2.1.2	Bias	3
2.1.3	Parameters	4
2.1.4	Events	4
2.2	Compared Parameters	5
2.3	Aspect	6
2.4	Star Slots	9
2.4.1	Slot 3	9
2.4.2	Slot 4	10
2.4.3	Slot 5	11
2.4.4	Slot 6	12
2.4.5	Slot 7	13
2.5	FID Slots	14
2.5.1	Slot 0	14
2.5.2	Slot 1	15
2.5.3	Slot 2	16
3	Point Sources	17
A	Summary	18
A.1	Status	18
A.2	Comments	18

1 Front

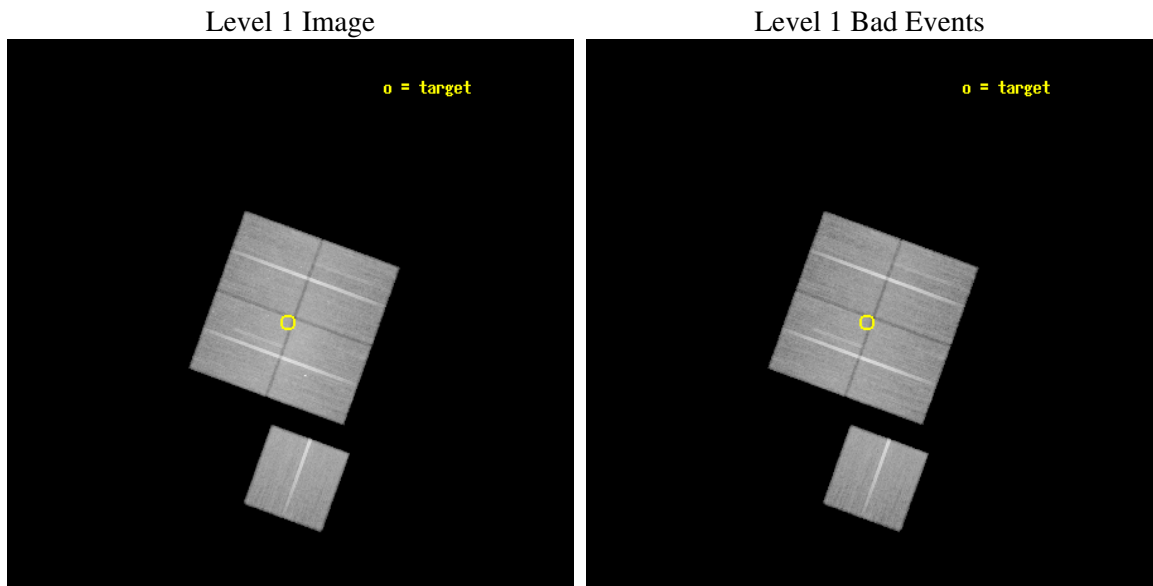
seq_num	800411
obs_id	4965
title	CHANDRA Observation of Galaxy Cluster A2069 - Implication for Hierarchical Mergers
observer	Dr. Stephen Murray
object	A2069
dtcycle	0
cycle	P
ra_targ	231.064167
dec_targ	29.917
ra_nom	231.05882677364
dec_nom	29.917256546457
roll_nom	199.90051345123
revision	2
ontime	56150.217921615
livetime	55416.57398728
ontime0	56156.499892026
ontime1	56156.499892026
ontime2	56140.795040607
ontime3	56150.217921615
ontime6	56156.499892026
l2events	235607



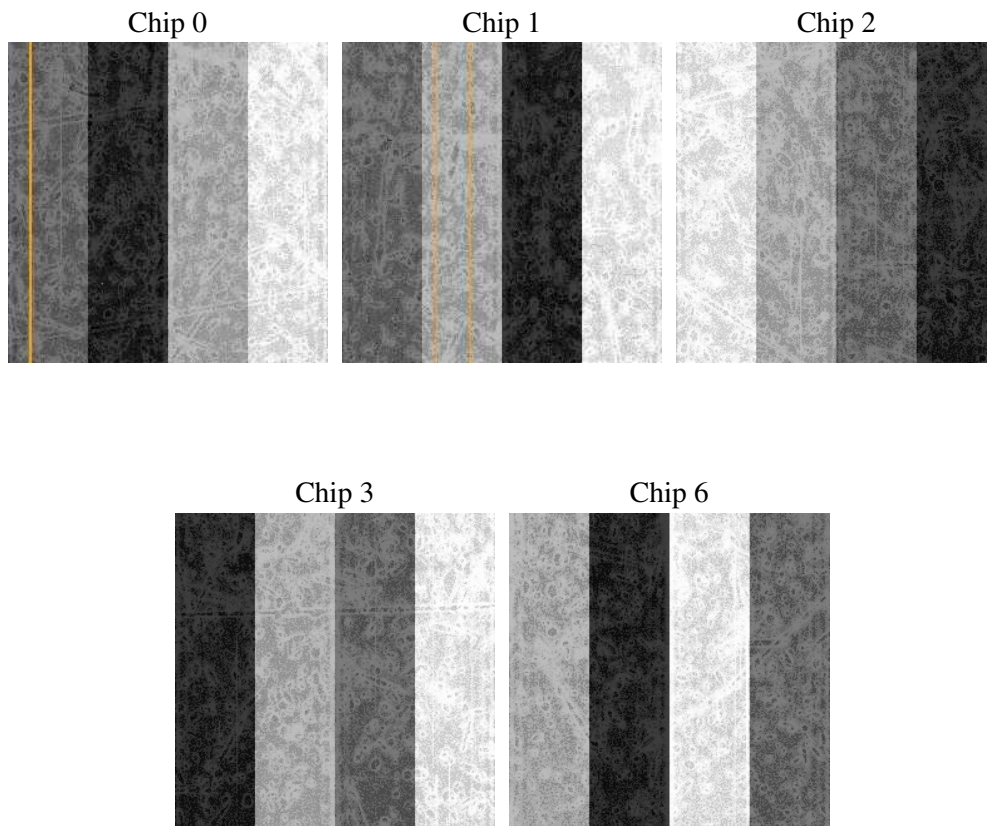
2 OBI

2.1 OBI

2.1.1 Images



2.1.2 Bias



2.1.3 Parameters

obi_num	0
ascdsver	7.6.7.2
caldbver	3.2.2
date	2006-05-15T00:42:58
revision	2

sched_exp_time	56106.157000
ontime	56154.935210764
ontime0	56161.217181176
ontime1	56161.217201114
ontime2	56145.512309849
ontime3	56154.935210764
ontime6	56161.217181176
l1events	1797754

2.1.4 Events

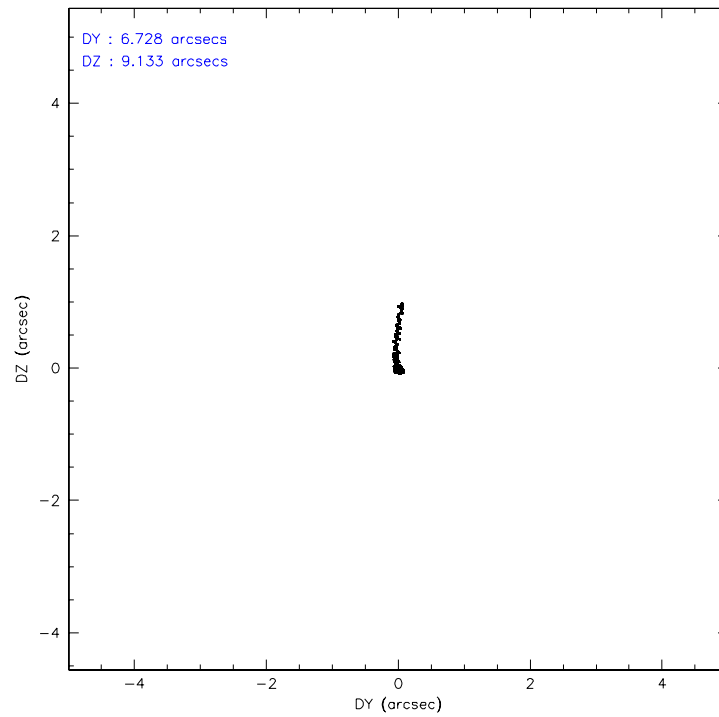
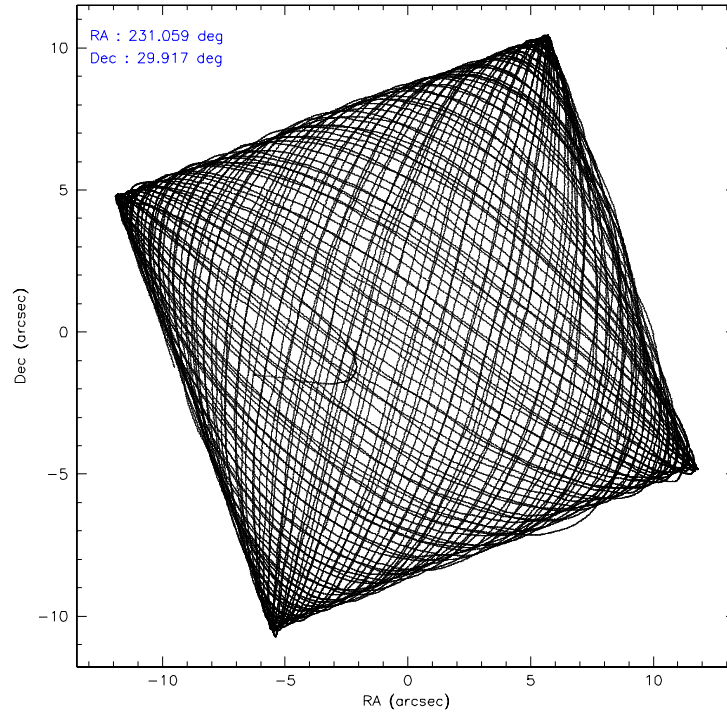
	ccd 0	ccd 1	ccd 2	ccd 3	ccd 6
level 1 events	343905	343004	397151	364292	349402
rejected events	291141	285023	326642	315224	309622
rejected %	84%	83%	82%	86%	88%

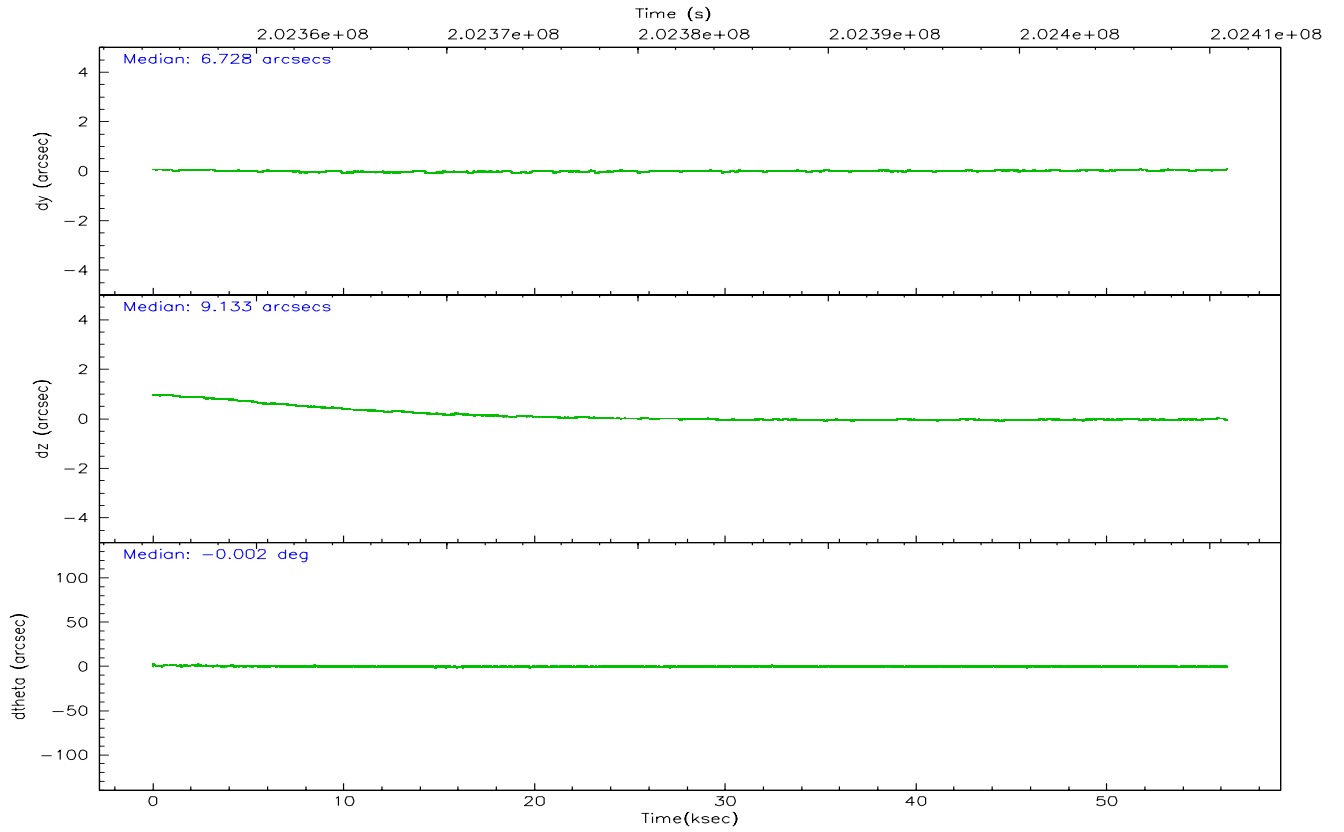
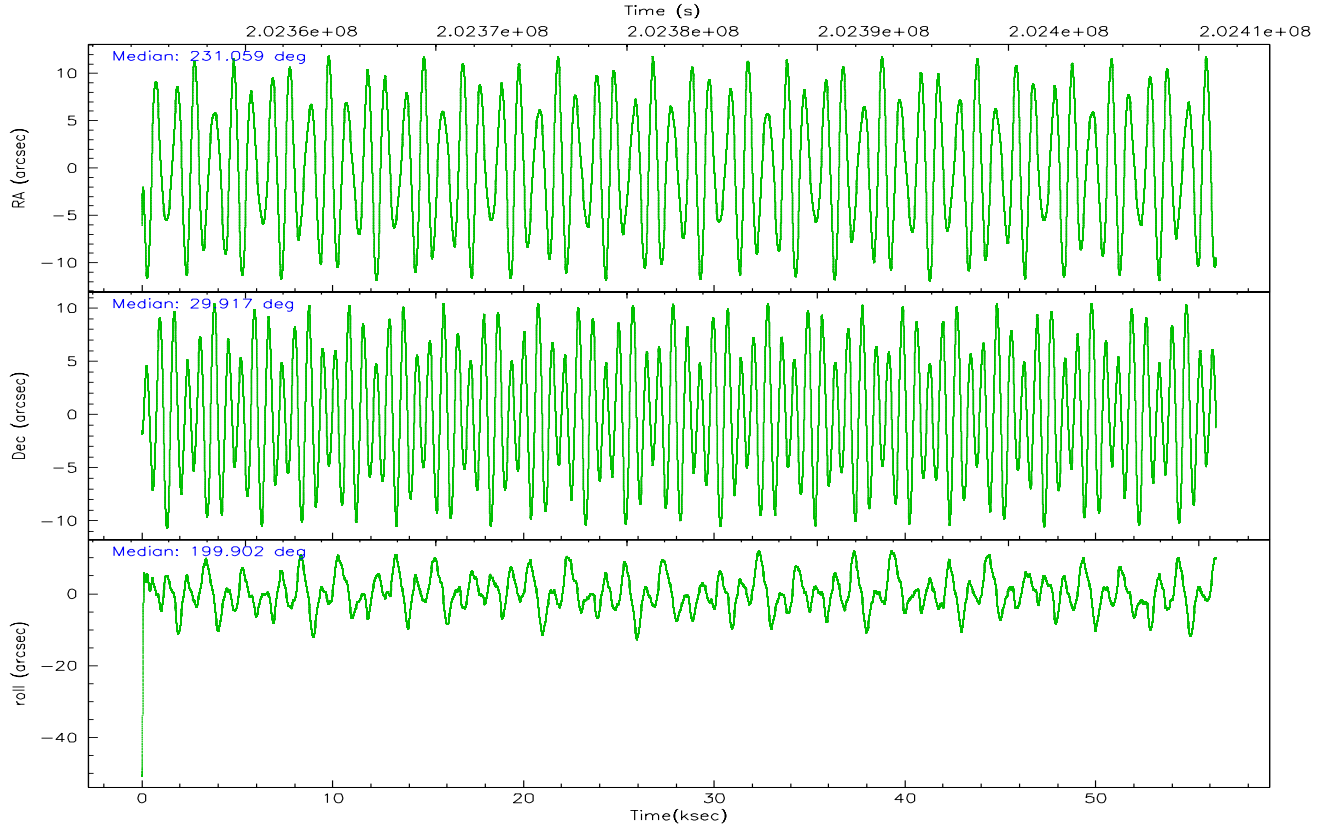
	ccd 0	ccd 1	ccd 2	ccd 3	ccd 6
grade 0 events	26860	29317	42271	24987	15720
	7%	8%	10%	6%	4%
grade 1 events	210	248	349	216	161
	0%	0%	0%	0%	0%
grade 2 events	9861	10180	11369	8707	8030
	2%	2%	2%	2%	2%
grade 3 events	4538	5066	4683	4232	4129
	1%	1%	1%	1%	1%
grade 4 events	4335	4936	4820	4158	4031
	1%	1%	1%	1%	1%
grade 5 events	12075	13083	11673	13549	13654
	3%	3%	2%	3%	3%
grade 6 events	7177	8493	7371	6990	7874
	2%	2%	1%	1%	2%
grade 7 events	278849	271681	314615	301453	295803
	81%	79%	79%	82%	84%

2.2 Compared Parameters

Parameter	Planned	Actual	Parameter	Planned	Actual
Instrument	ACIS	ACIS	Obspar format version number	6	6
Detector	ACIS-01236	ACIS-01236	Obspar file type	PREDICTED	ACTUAL
Grating	NONE	NONE	Obspar update status	NONE	UPDATED
Data mode	VFAINT	VFAINT	On-chip summing requested	N	N
Observation mode	POINTING	POINTING	Subarray requested	NONE	NONE
Pointing RA	231.079086	231.0588267736401	Alternating exposures requested	N	N
Pointing Dec	29.938267	29.91725654645721	Primary exposure time	0.000000	3.1
Pointing Roll	199.681732	199.9005134512301			
SIM focus pos (mm)	-0.782348	-0.7809083437167272			
SIM defocus (mm)	0	0.001439871863259334			
SIM translation stage pos (mm)	-233.592463	-233.5874344608287			
SIM translation stage offset (mm)	0	-0.005018542100998502			
Observation start time	202354800.184000	202353853.88313			
Observation start date	2004-05-31T01:38:56	2004-05-31T01:24:13			
Observation end time	202410906.184000	202411139.08566			
Observation end date	2004-05-31T17:14:02	2004-05-31T17:18:59			
Read mode	TIMED	TIMED			

2.3 Aspect



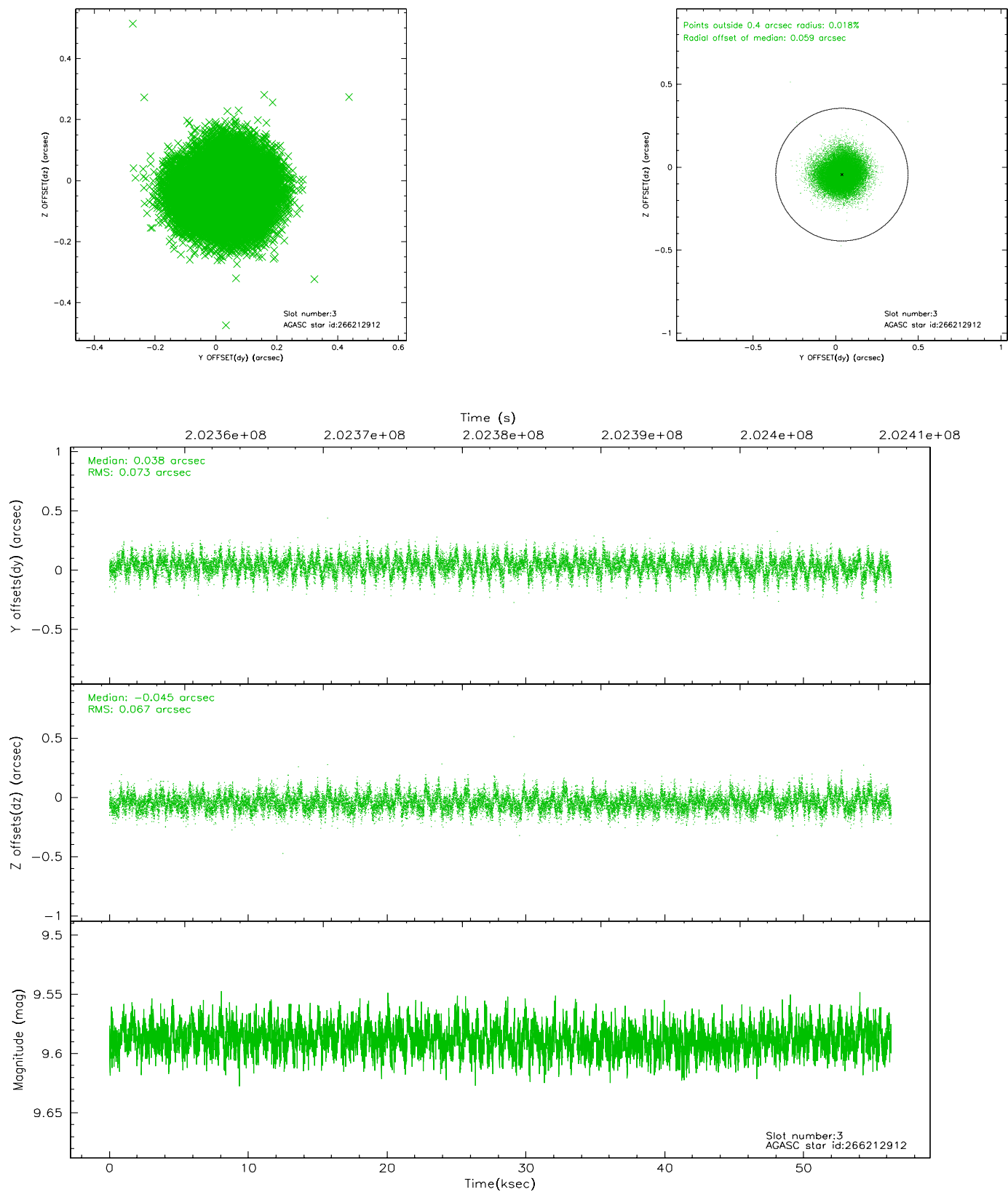


Slot Statistics

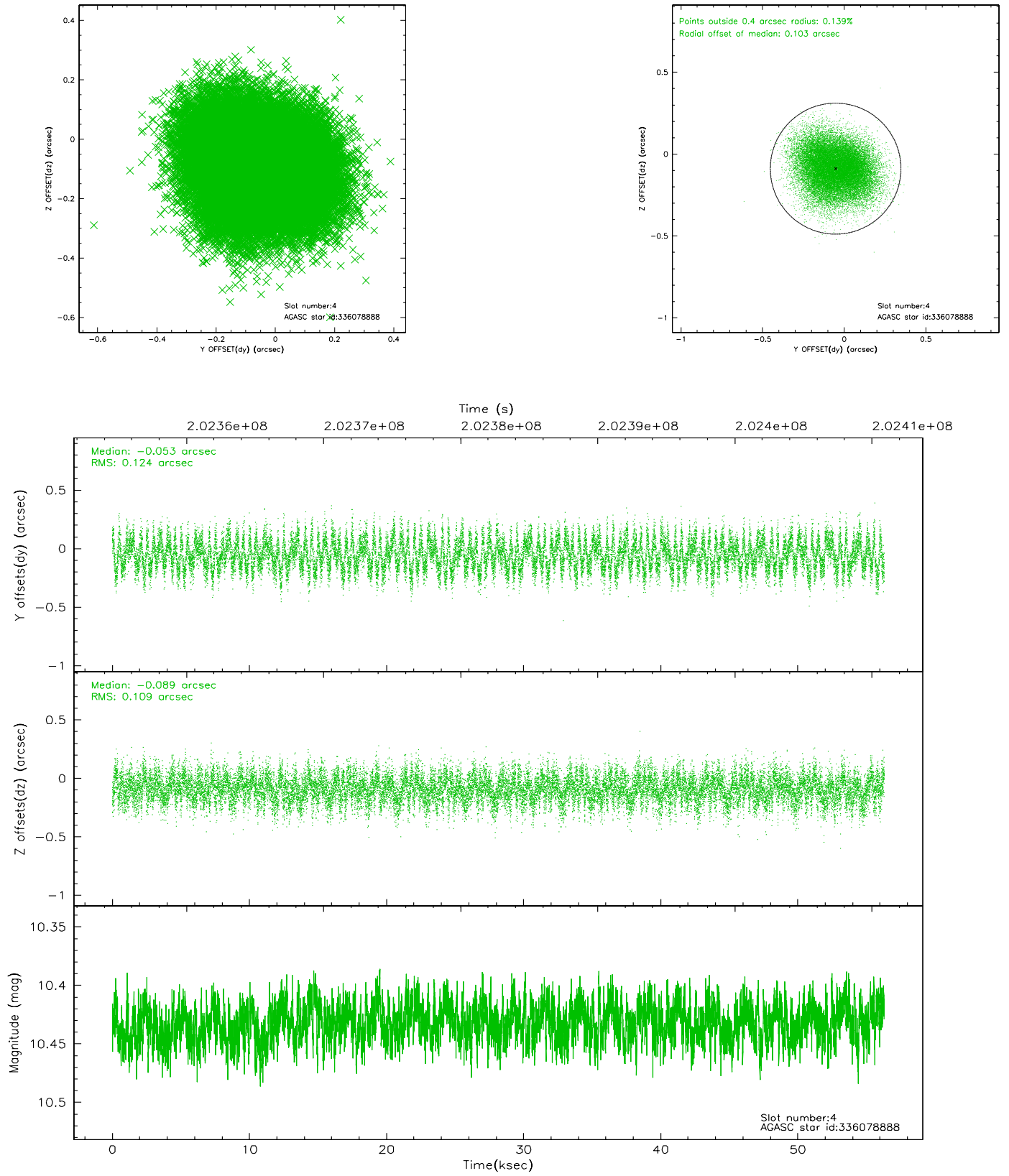
slot	status	id	mag	n_pts	med_dy	med_dz	dr1	dr2	ra	dec	mean_y	mean_z
0	FID	ACIS-I-1	7.24	13734	-0.027	0.075	0.008	0.019	0.000000	0.000000	932.93	-832.66
1	FID	ACIS-I-5	7.23	13733	-0.109	0.018	0.006	0.010	0.000000	0.000000	-1815.28	1064.79
2	FID	ACIS-I-6	7.25	13735	0.044	-0.023	0.009	0.021	0.000000	0.000000	398.58	1709.22
3	GUIDE	266212912	9.59	27450	0.038	-0.045	0.106	0.169	231.547551	29.728593	-1125.30	1201.41
4	GUIDE	336078888	10.43	27431	-0.053	-0.089	0.179	0.278	231.316688	30.571653	-1461.55	-1899.97
5	GUIDE	336078904	9.88	27442	-0.084	0.014	0.151	0.247	231.623302	30.236477	-1956.38	-444.29
6	GUIDE	266208832	10.14	27431	-0.042	0.067	0.180	0.285	230.244311	29.966400	2414.28	-980.92
7	GUIDE	266211016	10.35	27360	0.136	0.056	0.203	0.314	230.541241	29.261947	2409.79	1720.38

2.4 Star Slots

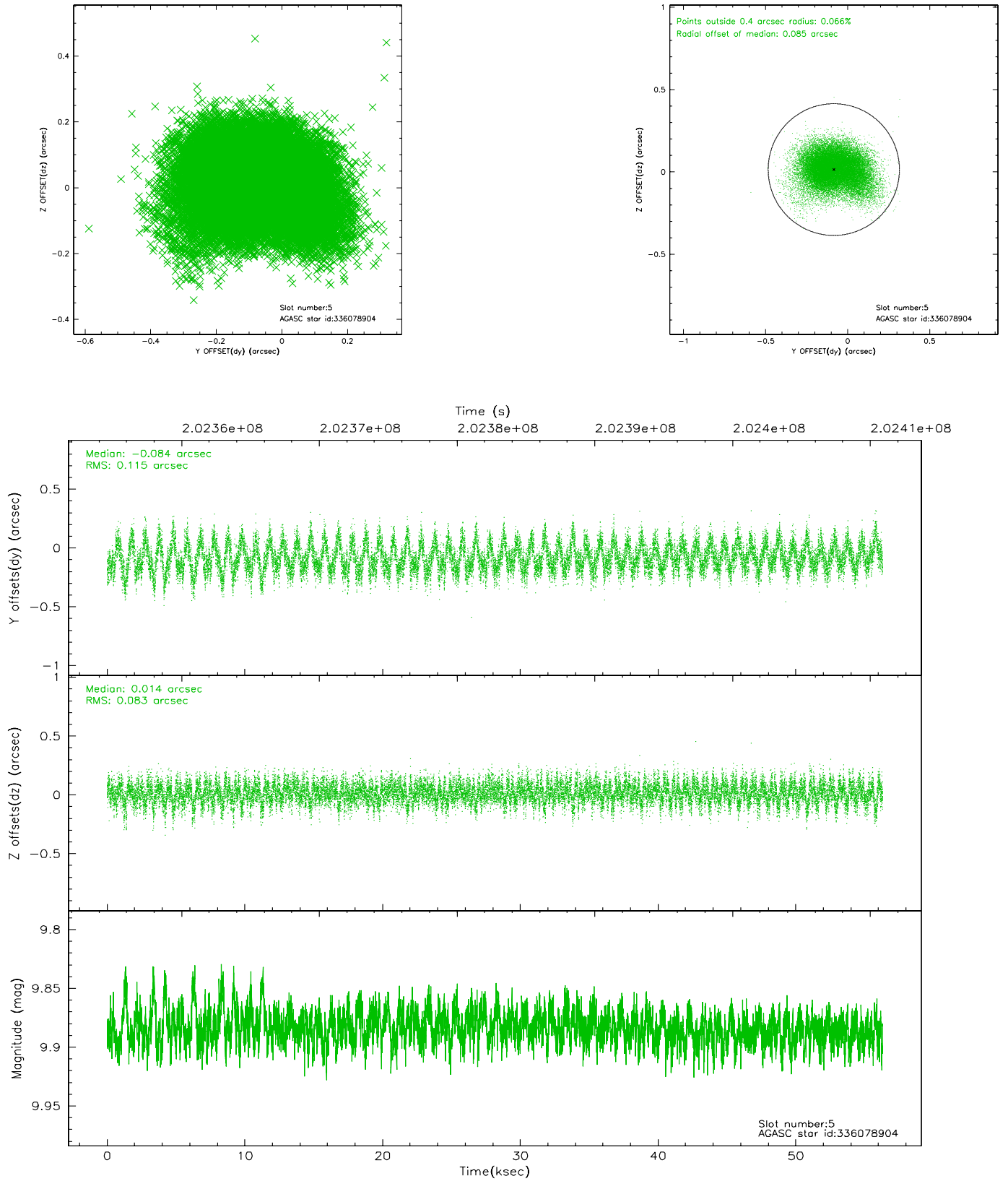
2.4.1 Slot 3



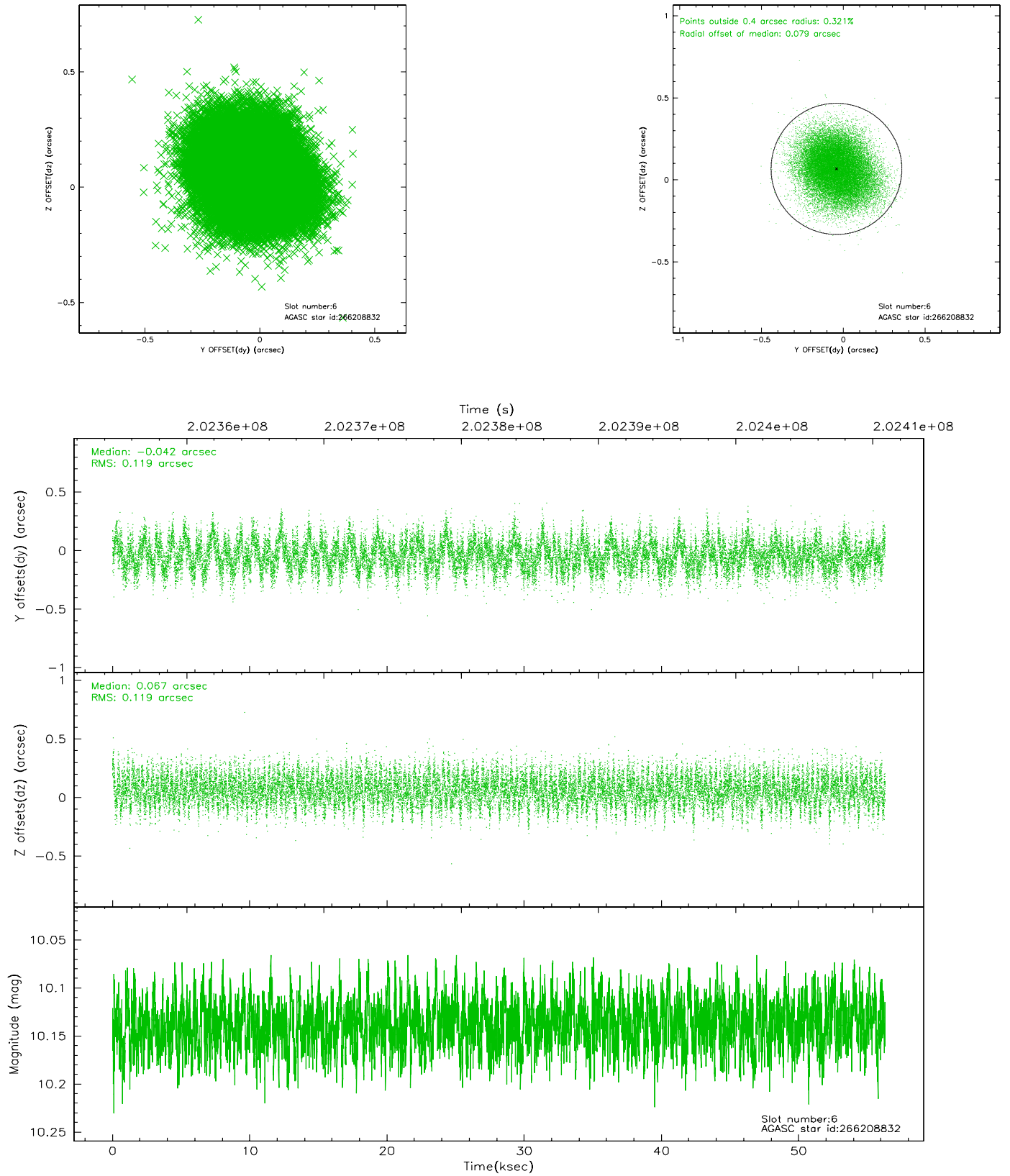
2.4.2 Slot 4



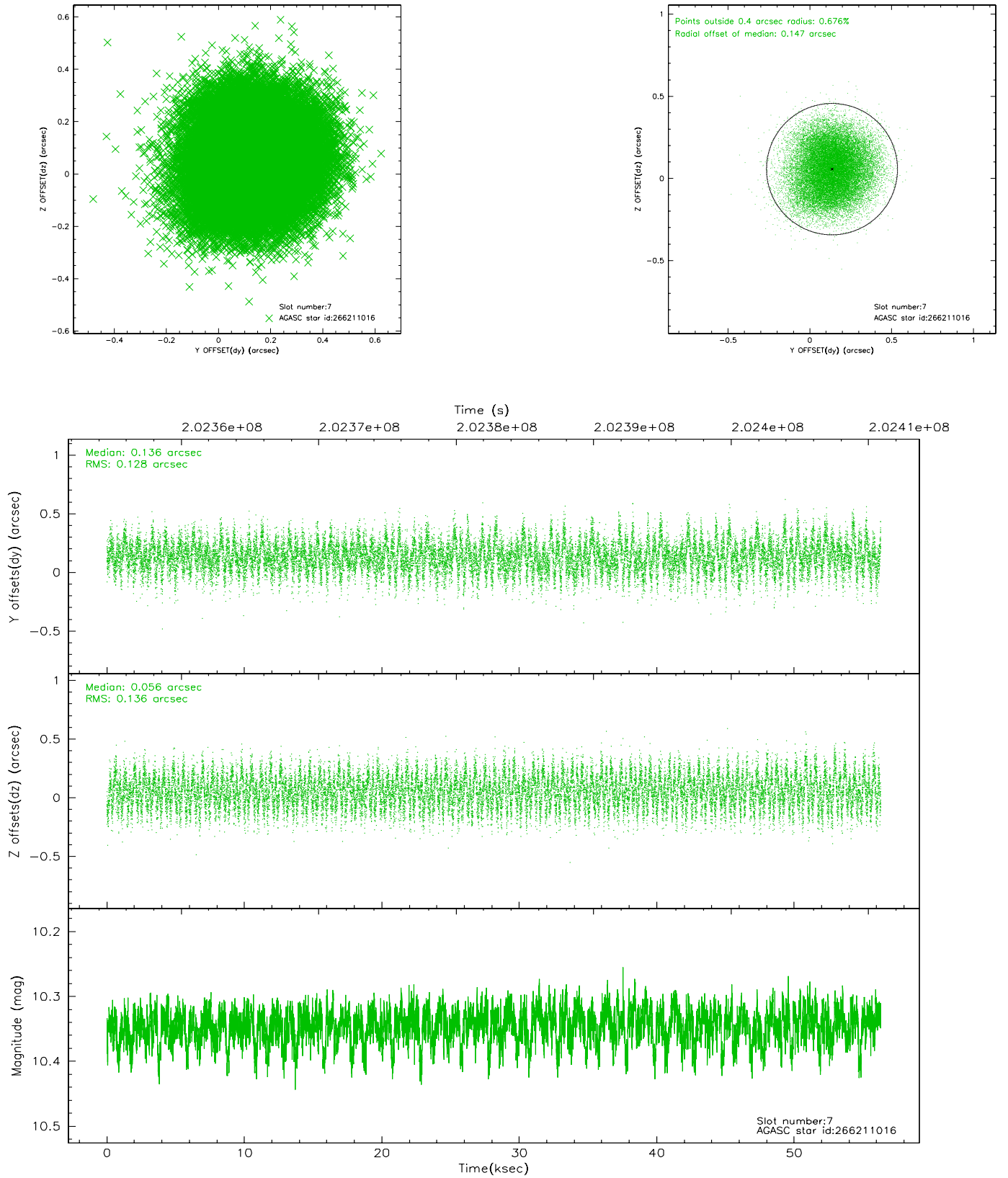
2.4.3 Slot 5



2.4.4 Slot 6

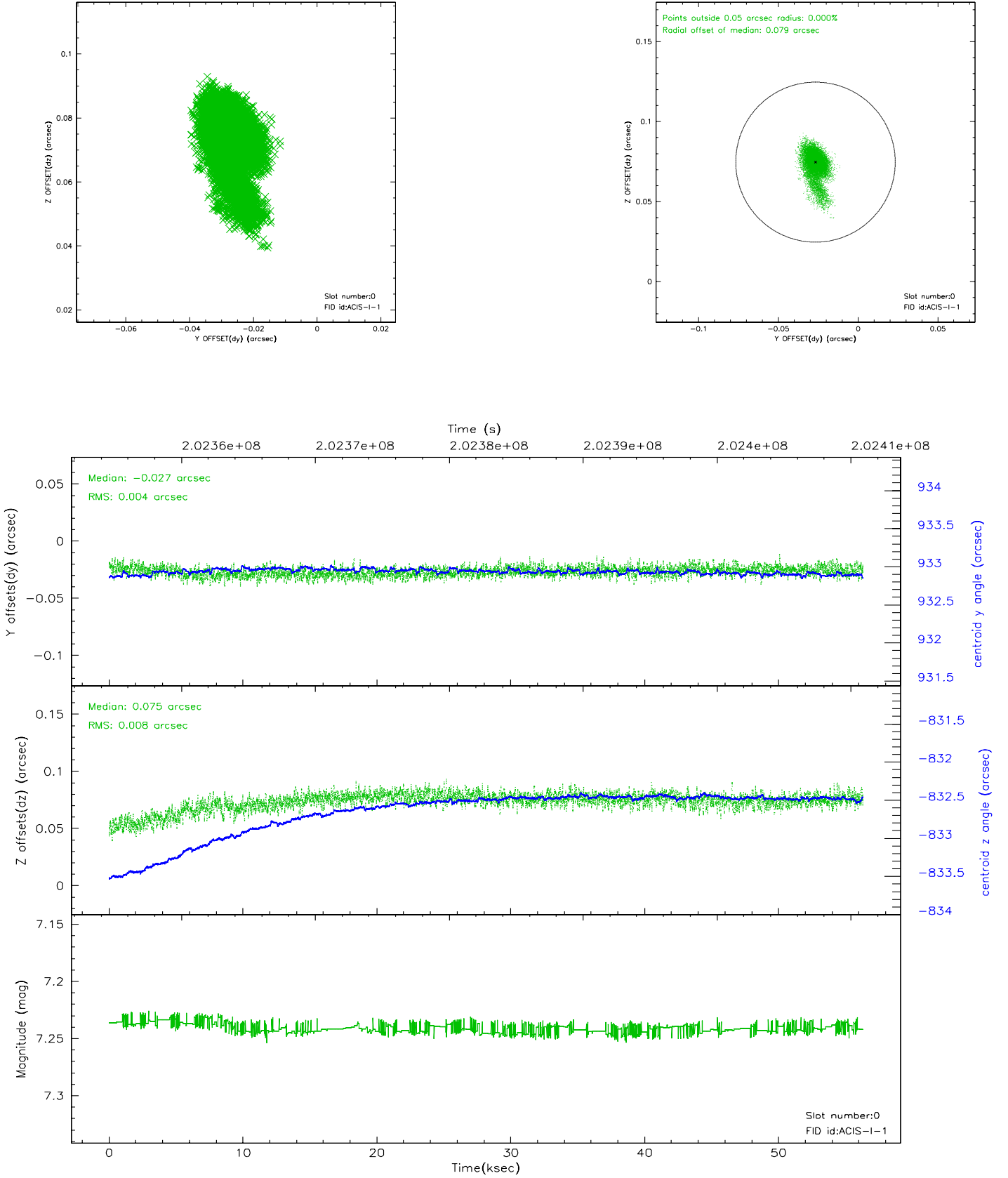


2.4.5 Slot 7

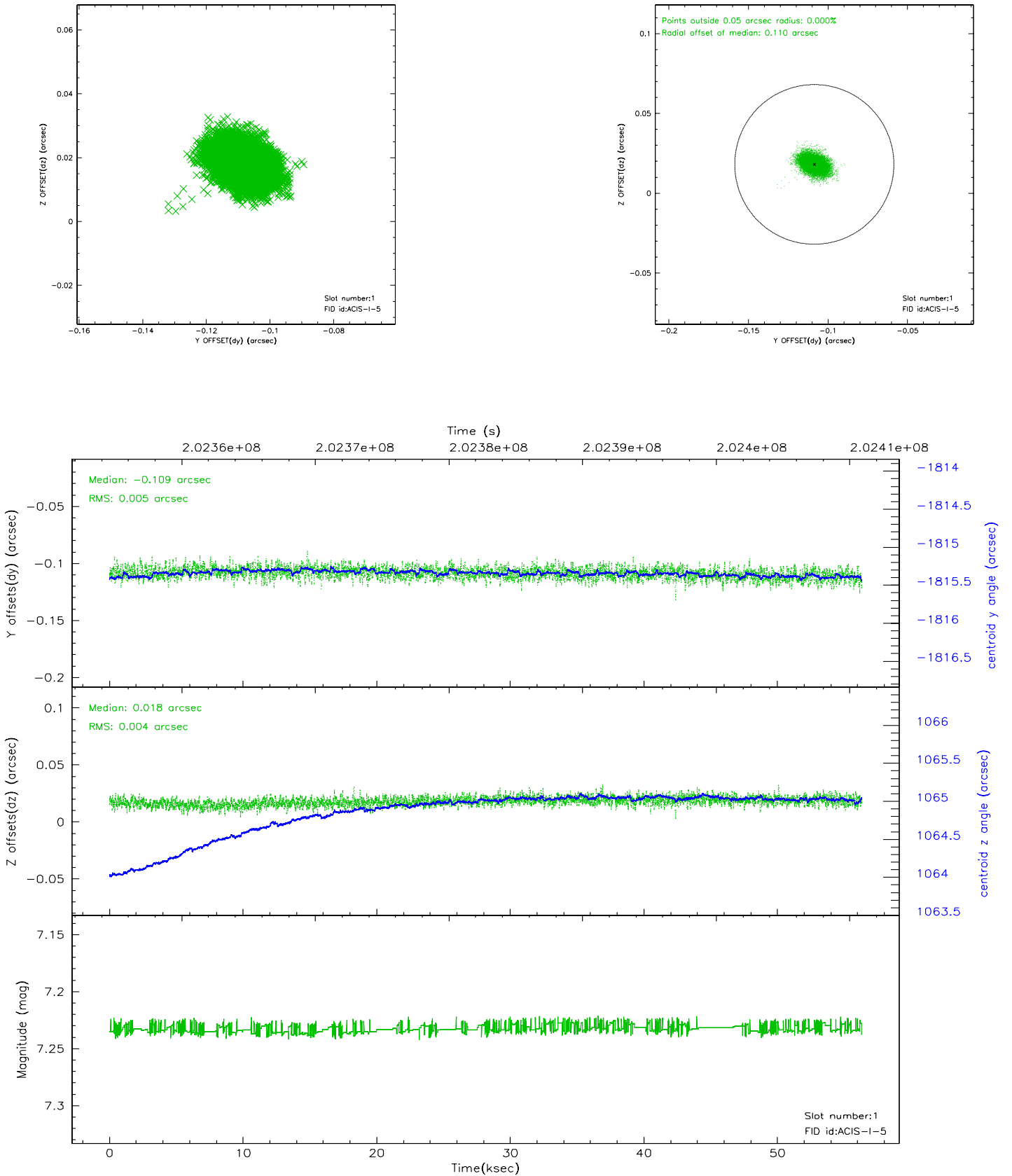


2.5 FID Slots

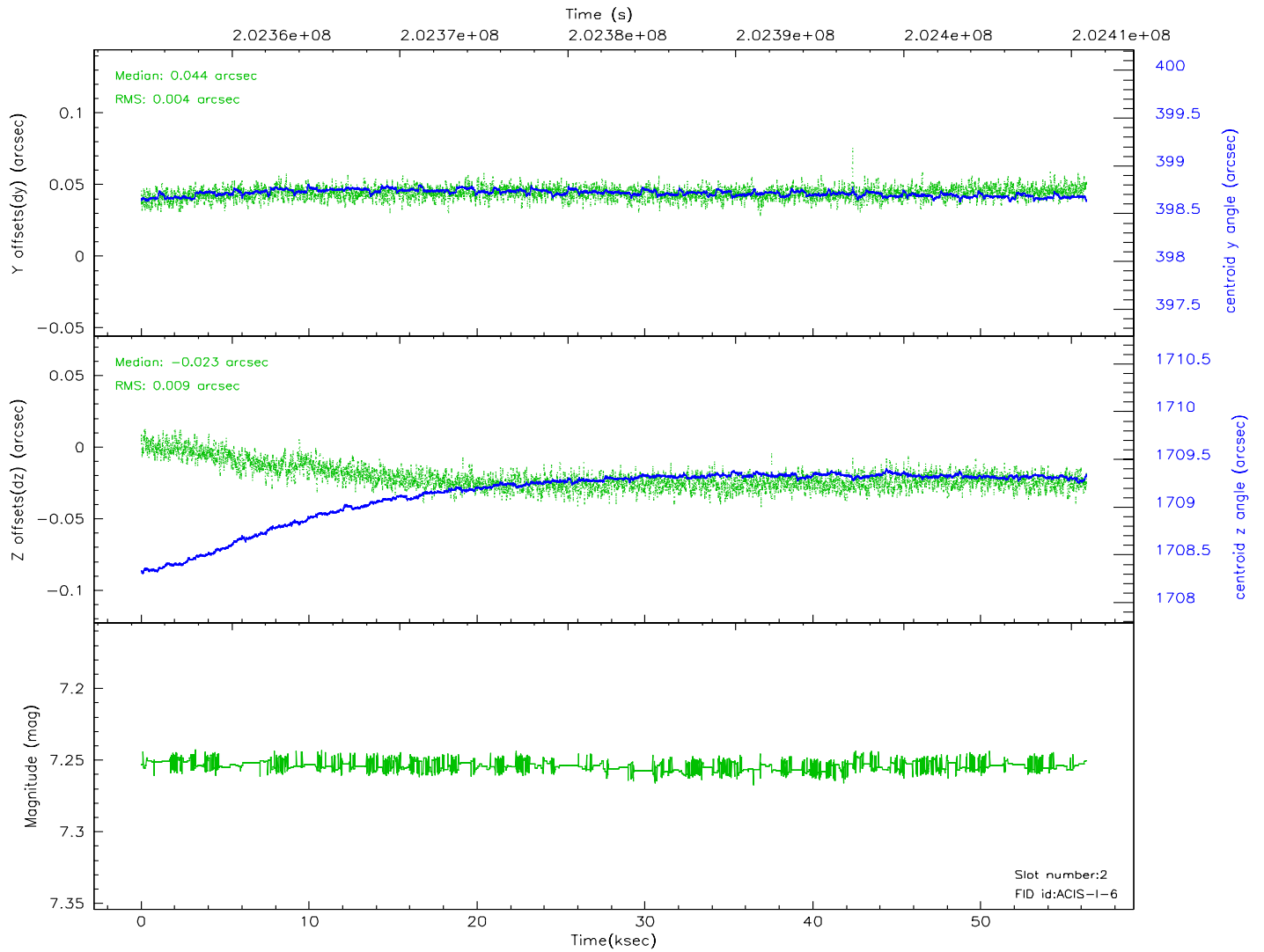
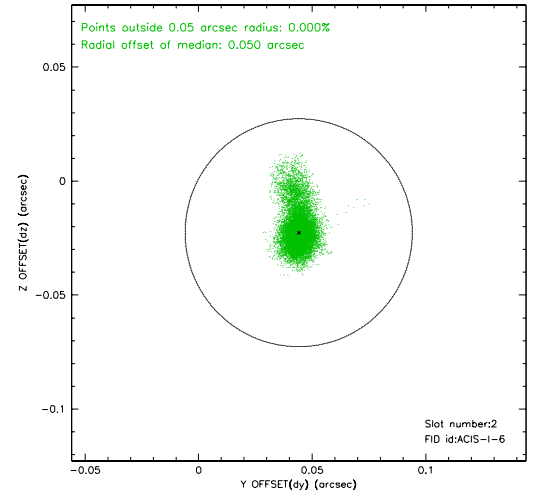
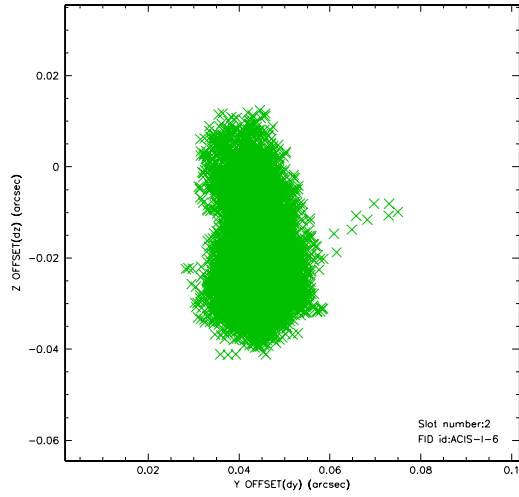
2.5.1 Slot 0



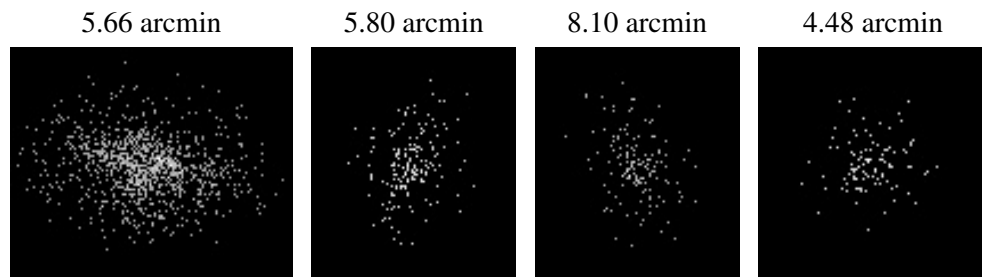
2.5.2 Slot 1



2.5.3 Slot 2



3 Point Sources



A Summary

A.1 Status

V&V Scientist	Jen Lauer
V&V Date (YYYY-MM-DD)	2006.05.15
V&V Edition	1
V&V Disposition and Status	OK
V&V Charge Time	56.153

A.2 Comments