

V&V Reference Report

L2 ASCDS Version : 7.6.7.2

Observation 4959 - L2 Version 001
Chandra X-Ray Center

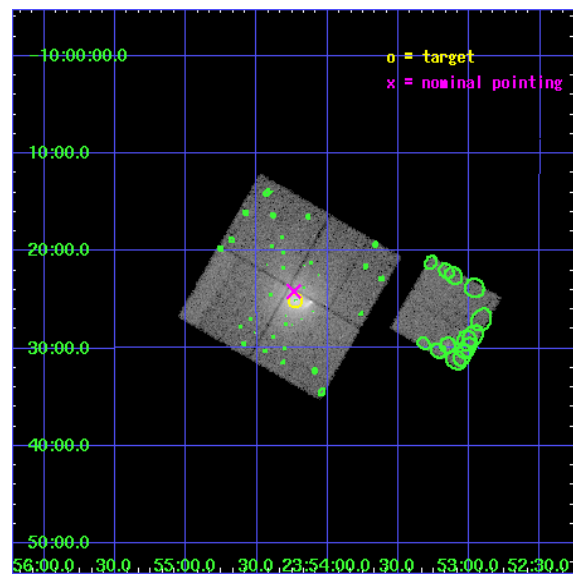
L2 Processing Date : May 18 2006

Contents

1	Front	2
2	OBI	3
2.1	OBI	3
2.1.1	Images	3
2.1.2	Bias	3
2.1.3	Parameters	4
2.1.4	Events	4
2.2	Compared Parameters	5
2.3	Aspect	6
2.4	Star Slots	9
2.4.1	Slot 3	9
2.4.2	Slot 4	10
2.4.3	Slot 5	11
2.4.4	Slot 6	12
2.4.5	Slot 7	13
2.5	FID Slots	14
2.5.1	Slot 0	14
2.5.2	Slot 1	15
2.5.3	Slot 2	16
3	Point Sources	17
A	Summary	18
A.1	Status	18
A.2	Comments	18

1 Front

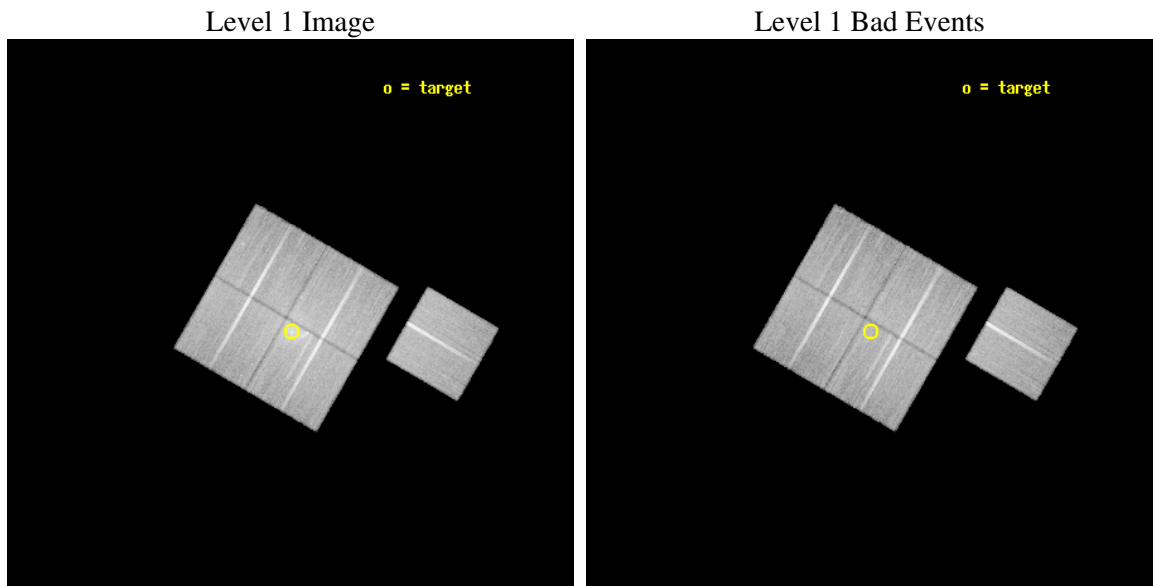
seq_num	800405
obs_id	4959
title	Chandra Observations of Galaxy Clusters with Large cD Galaxy Peculiar Velocities
observer	Dr. Craig Sarazin
object	Abell 2670
dtcycle	0
cycle	P
ra_targ	358.556917
dec_targ	-10.418889
ra_nom	358.55946334846
dec_nom	-10.402931676469
roll_nom	120.10384906062
revision	2
ontime	40138.677101761
livetime	39614.235735762
ontime0	40141.817972302
ontime1	40138.676932365
ontime2	40138.67702204
ontime3	40138.677101761
ontime6	40148.099922806
l2events	161035



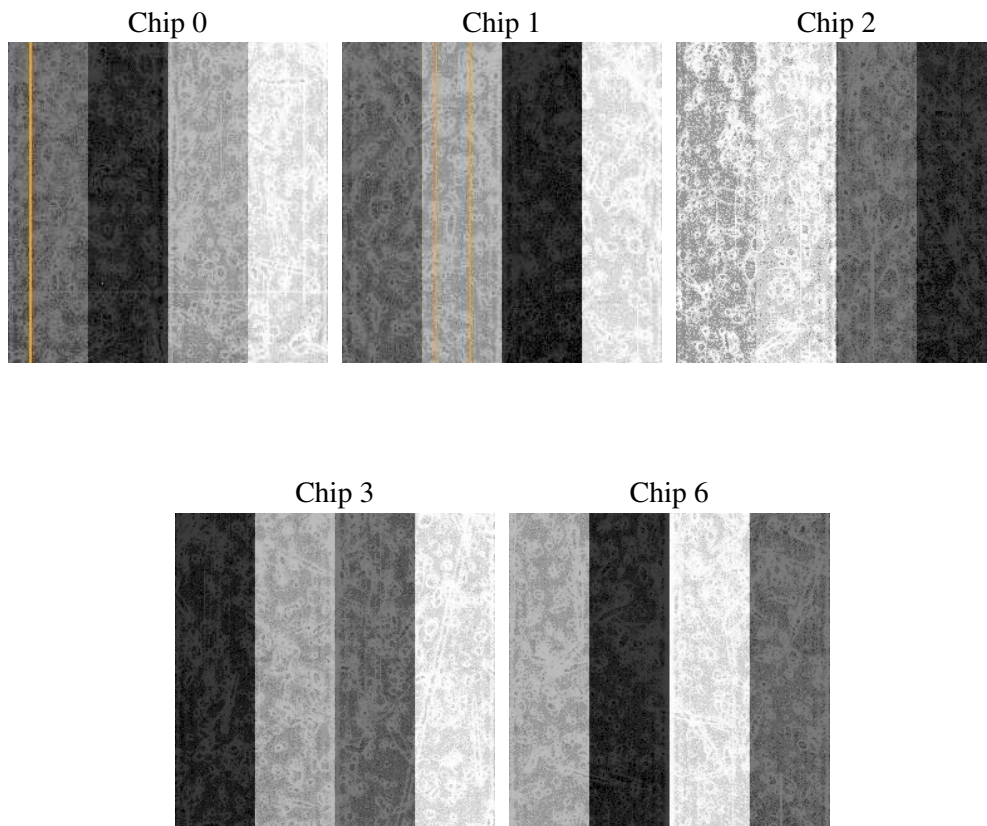
2 OBI

2.1 OBI

2.1.1 Images



2.1.2 Bias



2.1.3 Parameters

obi_num	0
ascdsver	7.6.7.2
caldbver	3.2.2
date	2006-05-19T00:20:35
revision	2

sched_exp_time	40030.249000
ontime	40145.142461032
ontime0	40148.283351481
ontime1	40145.142291635
ontime2	40145.14238131
ontime3	40145.142461032
ontime6	40154.565282077
l1events	1252183

2.1.4 Events

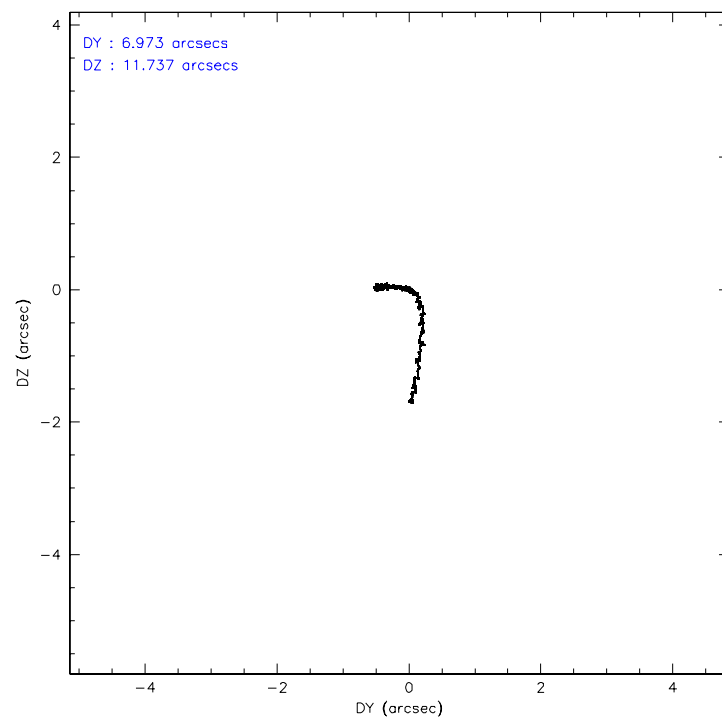
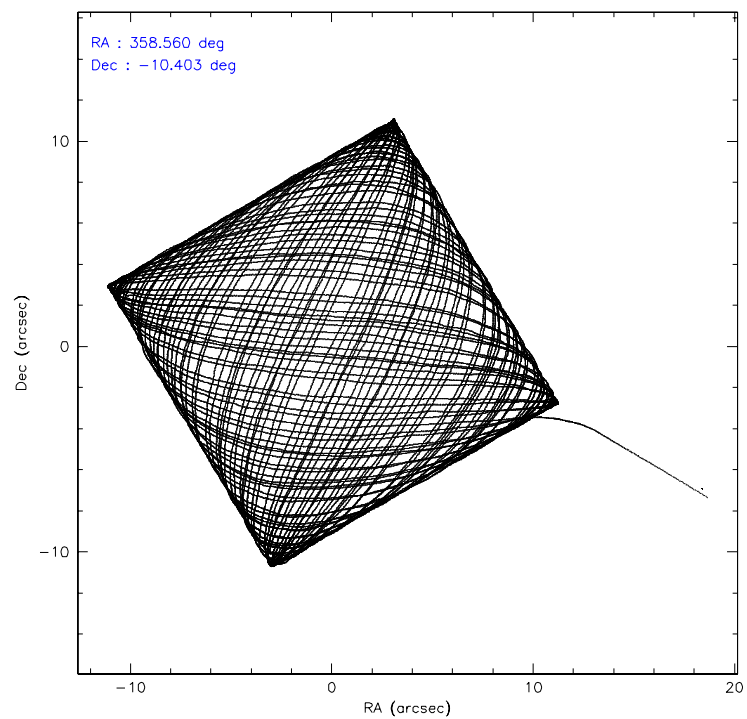
	ccd 0	ccd 1	ccd 2	ccd 3	ccd 6
level 1 events	228262	238024	265912	273575	246410
rejected events	197010	201426	230950	219648	219395
rejected %	86%	84%	86%	80%	89%

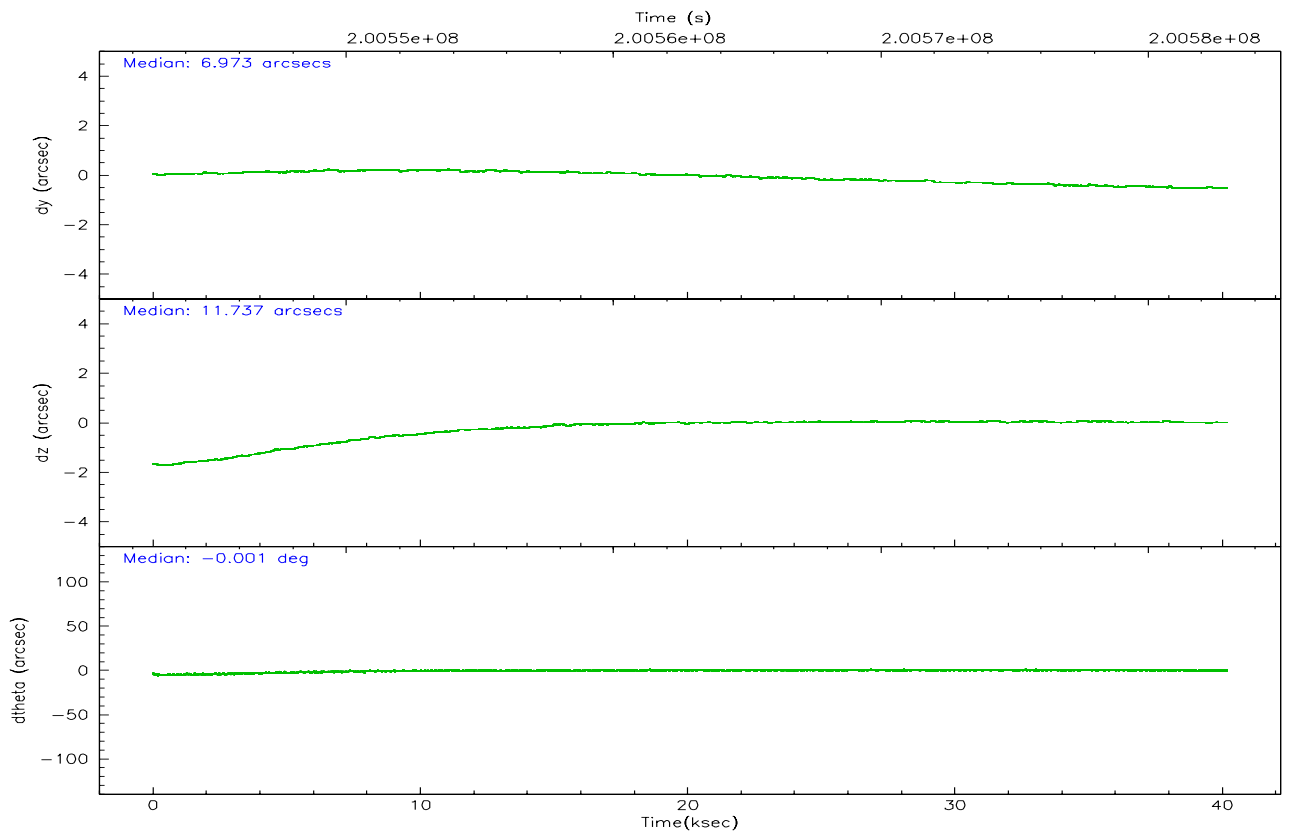
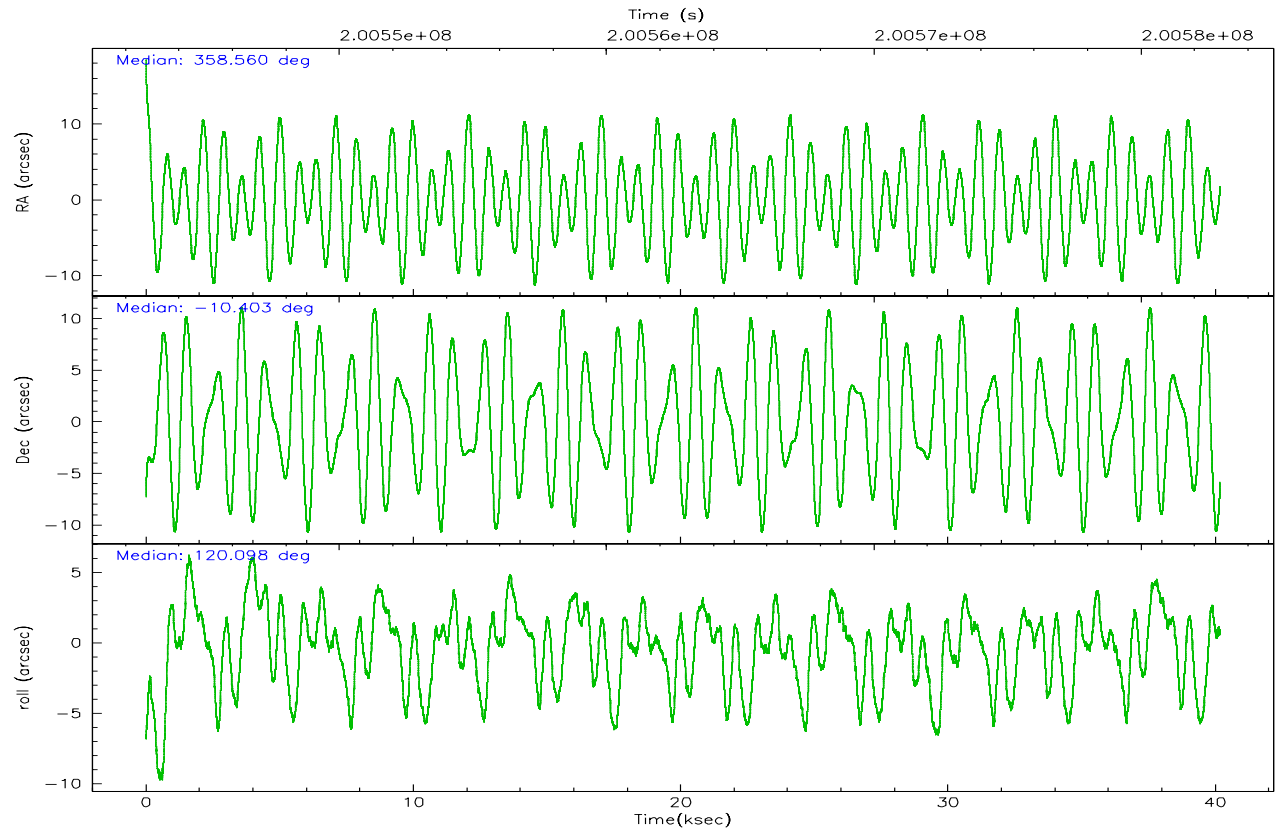
	ccd 0	ccd 1	ccd 2	ccd 3	ccd 6
grade 0 events	14310	17941	18061	33864	10480
	6%	7%	6%	12%	4%
grade 1 events	135	140	177	276	115
	0%	0%	0%	0%	0%
grade 2 events	6271	6565	6403	7774	5423
	2%	2%	2%	2%	2%
grade 3 events	3038	3210	2912	3553	2908
	1%	1%	1%	1%	1%
grade 4 events	2836	3167	3012	3459	2820
	1%	1%	1%	1%	1%
grade 5 events	8243	9043	8079	9425	9179
	3%	3%	3%	3%	3%
grade 6 events	4803	5720	4589	5283	5393
	2%	2%	1%	1%	2%
grade 7 events	188626	192238	222679	209941	210092
	82%	80%	83%	76%	85%

2.2 Compared Parameters

Parameter	Planned	Actual	Parameter	Planned	Actual
Instrument	ACIS	ACIS	Obspar format version number	6	6
Detector	ACIS-01236	ACIS-01236	Obspar file type	PREDICTED	ACTUAL
Grating	NONE	NONE	Obspar update status	NONE	UPDATED
Data mode	VFAINT	VFAINT	On-chip summing requested	N	N
Observation mode	POINTING	POINTING	Subarray requested	NONE	NONE
Pointing RA	358.583641	358.5594633484637	Alternating exposures requested	N	N
Pointing Dec	-10.416463	-10.40293167646915	Primary exposure time	0.000000	3.1
Pointing Roll	119.899532	120.1038490606225			
SIM focus pos (mm)	-0.782348	-0.7809083437167272			
SIM defocus (mm)	0	0.001439871863259334			
SIM translation stage pos (mm)	-233.592463	-233.5874344608287			
SIM translation stage offset (mm)	0	-0.005018542100998502			
Observation start time	200542924.184000	200541956.69062			
Observation start date	2004-05-10T02:21:00	2004-05-10T02:05:56			
Observation end time	200582954.184000	200583268.80495			
Observation end date	2004-05-10T13:28:10	2004-05-10T13:34:28			
Read mode	TIMED	TIMED			

2.3 Aspect



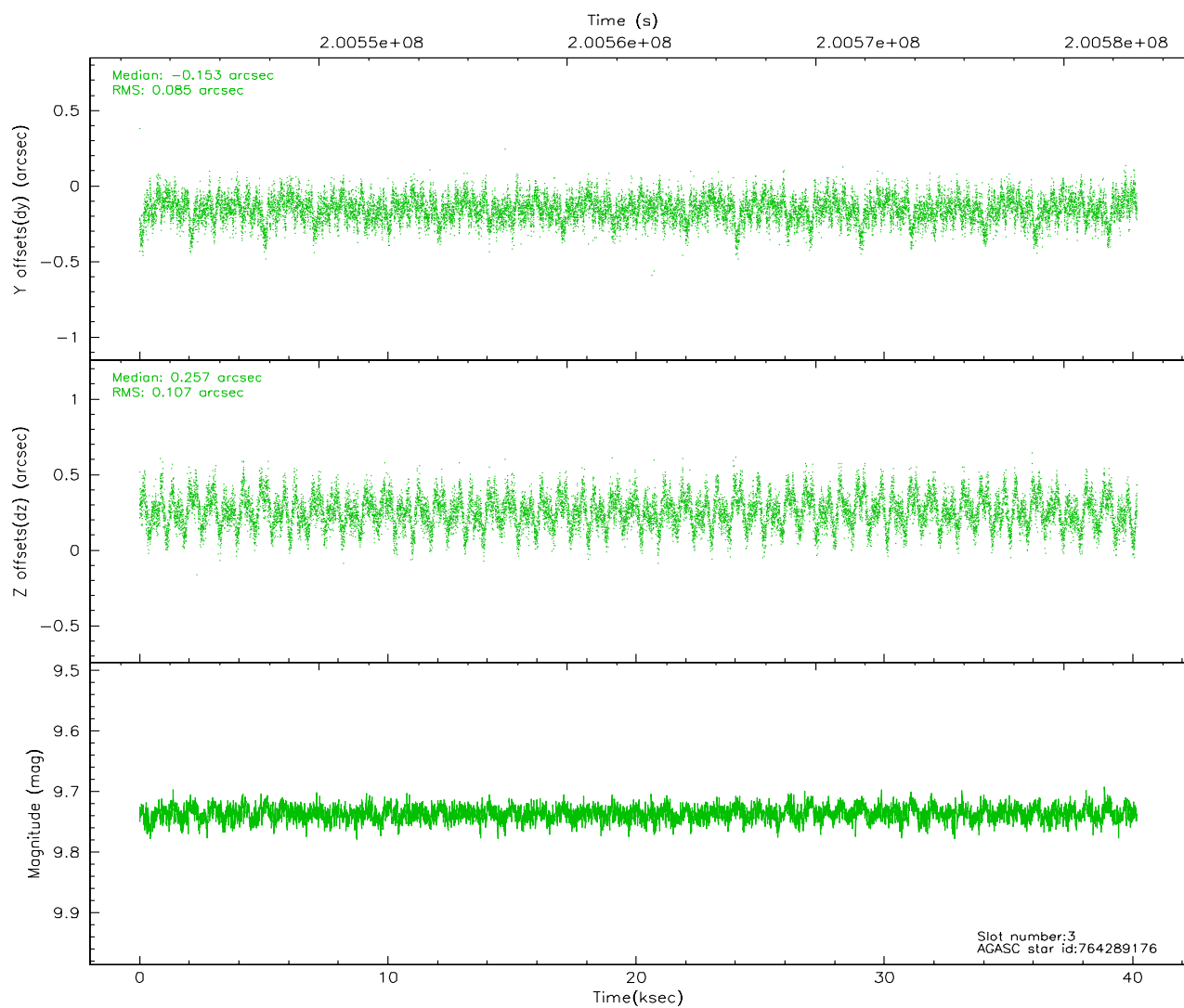
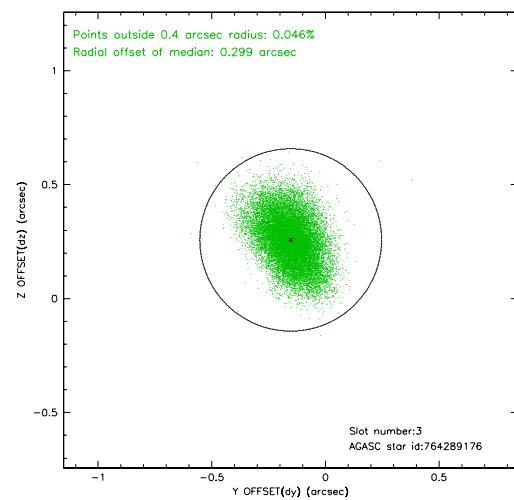
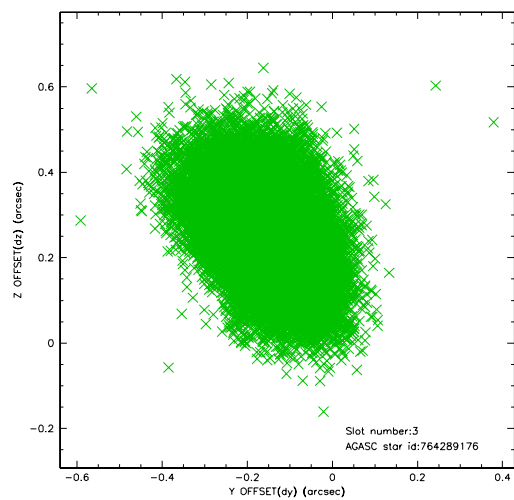


Slot Statistics

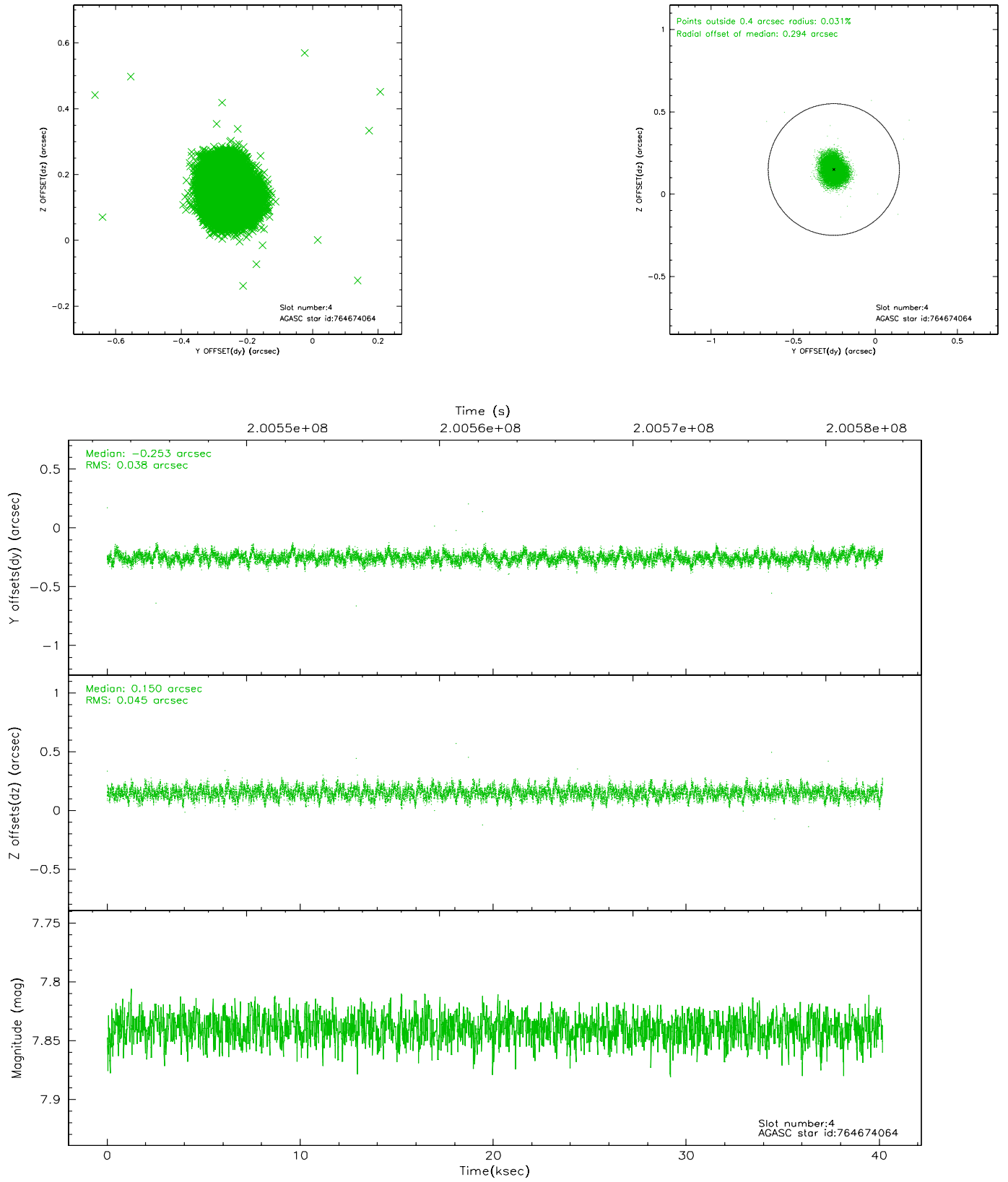
slot	status	id	mag	n_pts	med_dy	med_dz	dr1	dr2	ra	dec	mean_y	mean_z
0	FID	ACIS-I-1	7.24	9801	0.017	0.020	0.012	0.034	0.000000	0.000000	932.78	-834.95
1	FID	ACIS-I-5	7.23	9799	-0.123	0.051	0.011	0.029	0.000000	0.000000	-1815.41	1062.61
2	FID	ACIS-I-6	7.25	9801	0.015	0.001	0.015	0.031	0.000000	0.000000	398.37	1707.04
3	GUIDE	764289176	9.74	19583	-0.153	0.257	0.145	0.239	358.916243	-9.780607	1395.87	-2162.69
4	GUIDE	764674064	7.84	19599	-0.253	0.150	0.062	0.101	358.377713	-10.005844	1645.20	-103.44
5	GUIDE	764676096	10.28	19559	0.018	-0.383	0.142	0.232	358.114809	-10.840116	-497.06	2197.44
6	GUIDE	764681792	8.36	19597	0.139	0.054	0.073	0.117	358.985420	-10.865799	-2110.96	-424.54
7	BAD	764677232	10.23	18829	0.261	-0.084	0.189	0.334	358.400281	-11.249271	-2276.66	2055.77

2.4 Star Slots

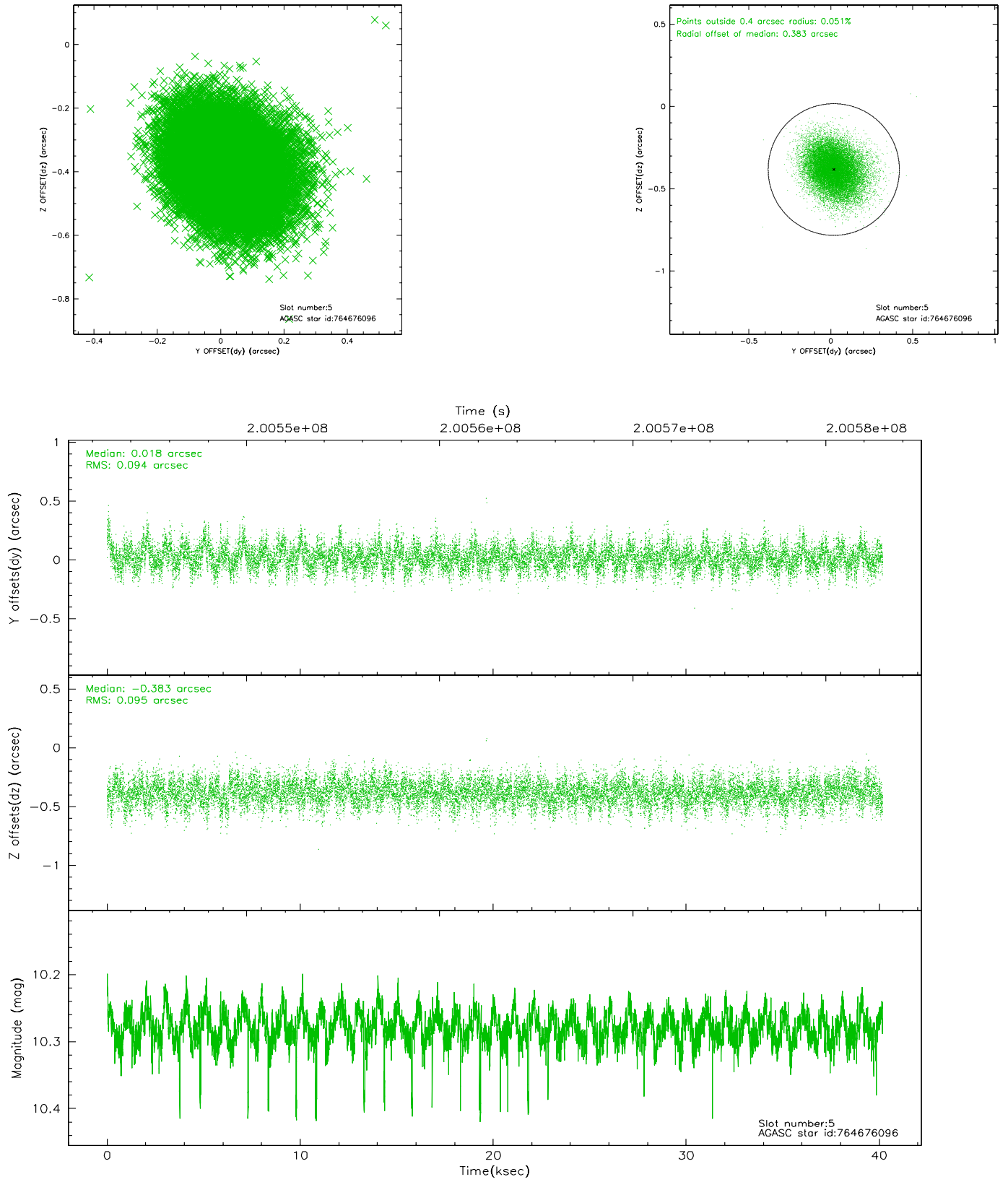
2.4.1 Slot 3



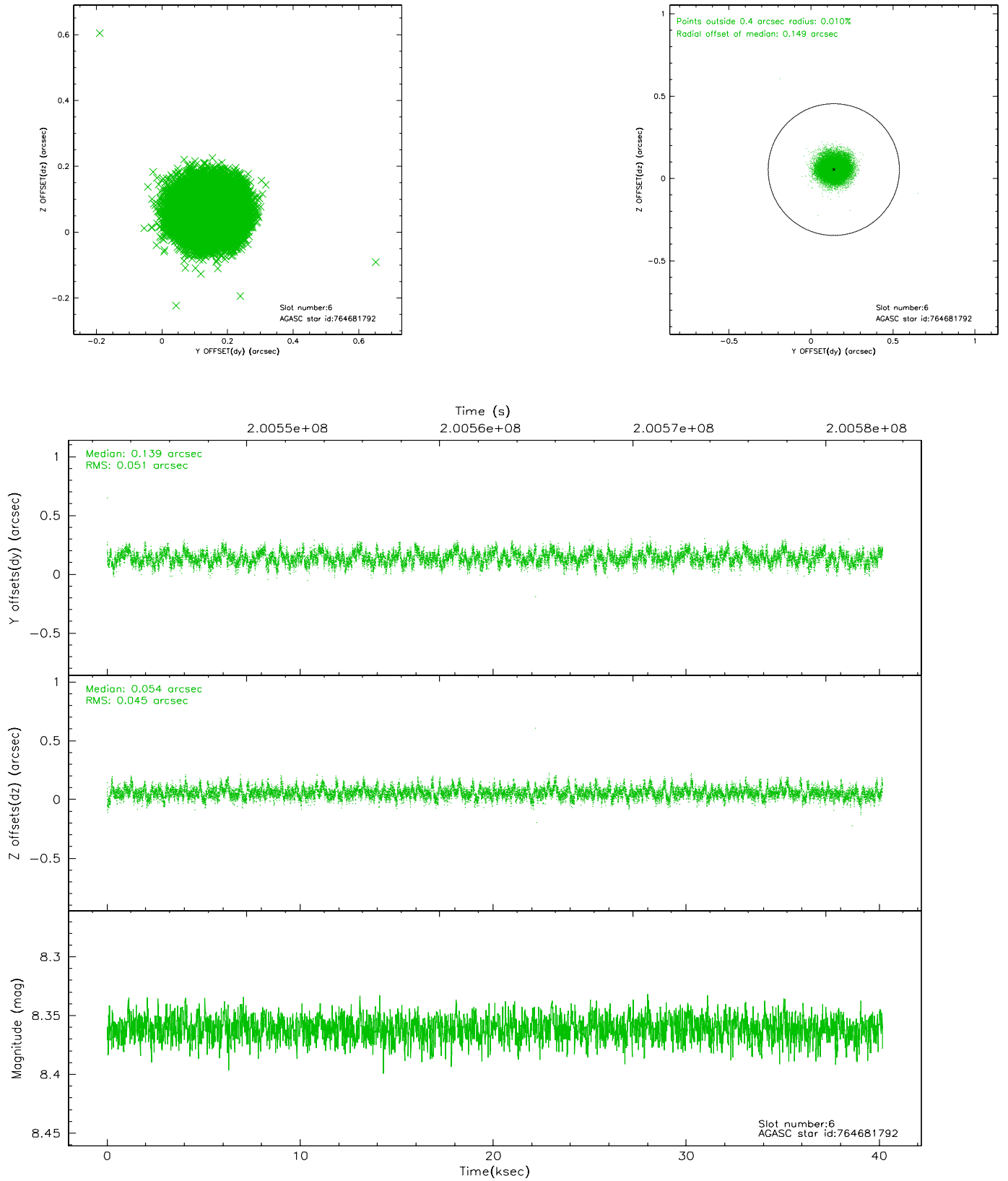
2.4.2 Slot 4



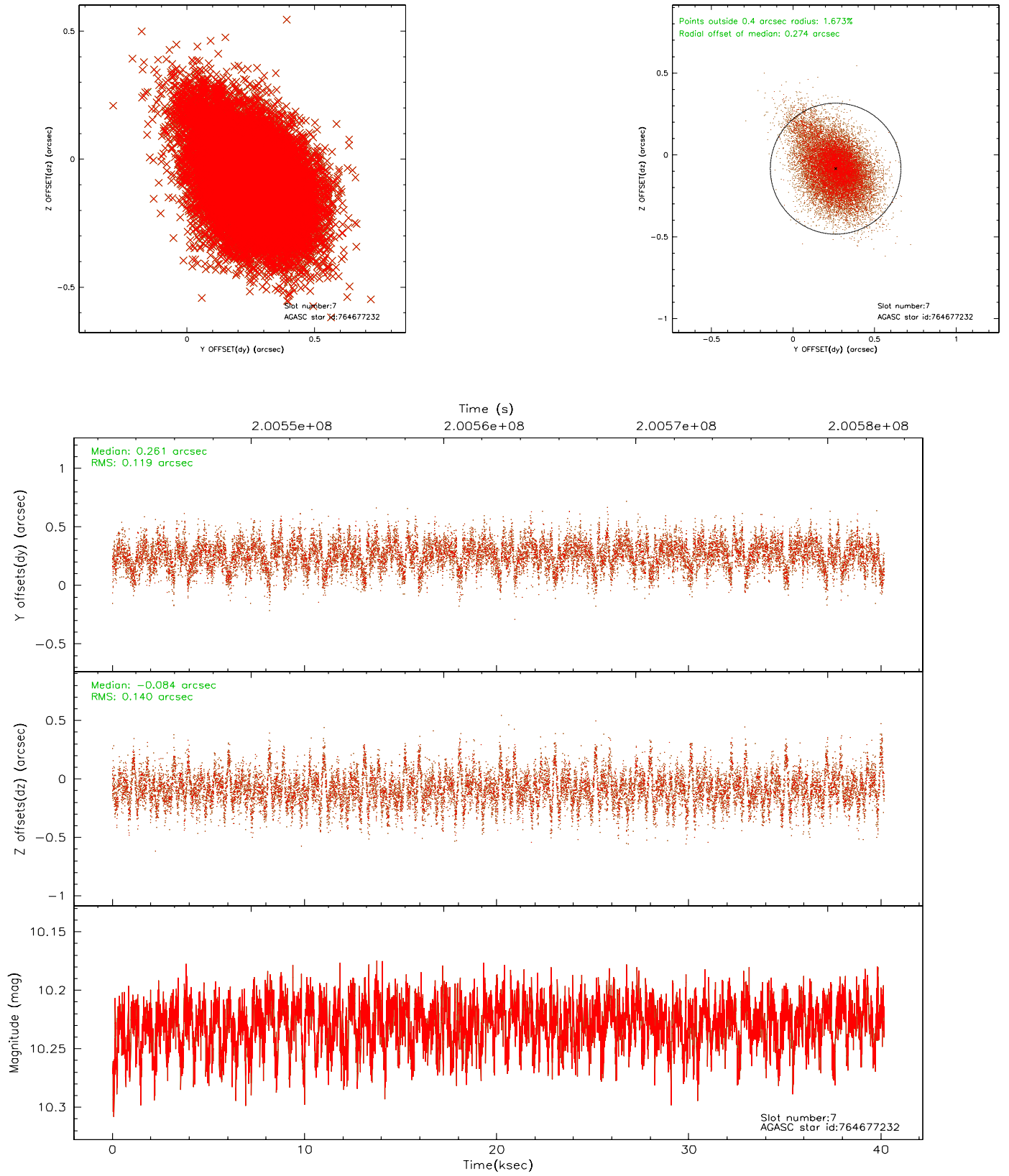
2.4.3 Slot 5



2.4.4 Slot 6

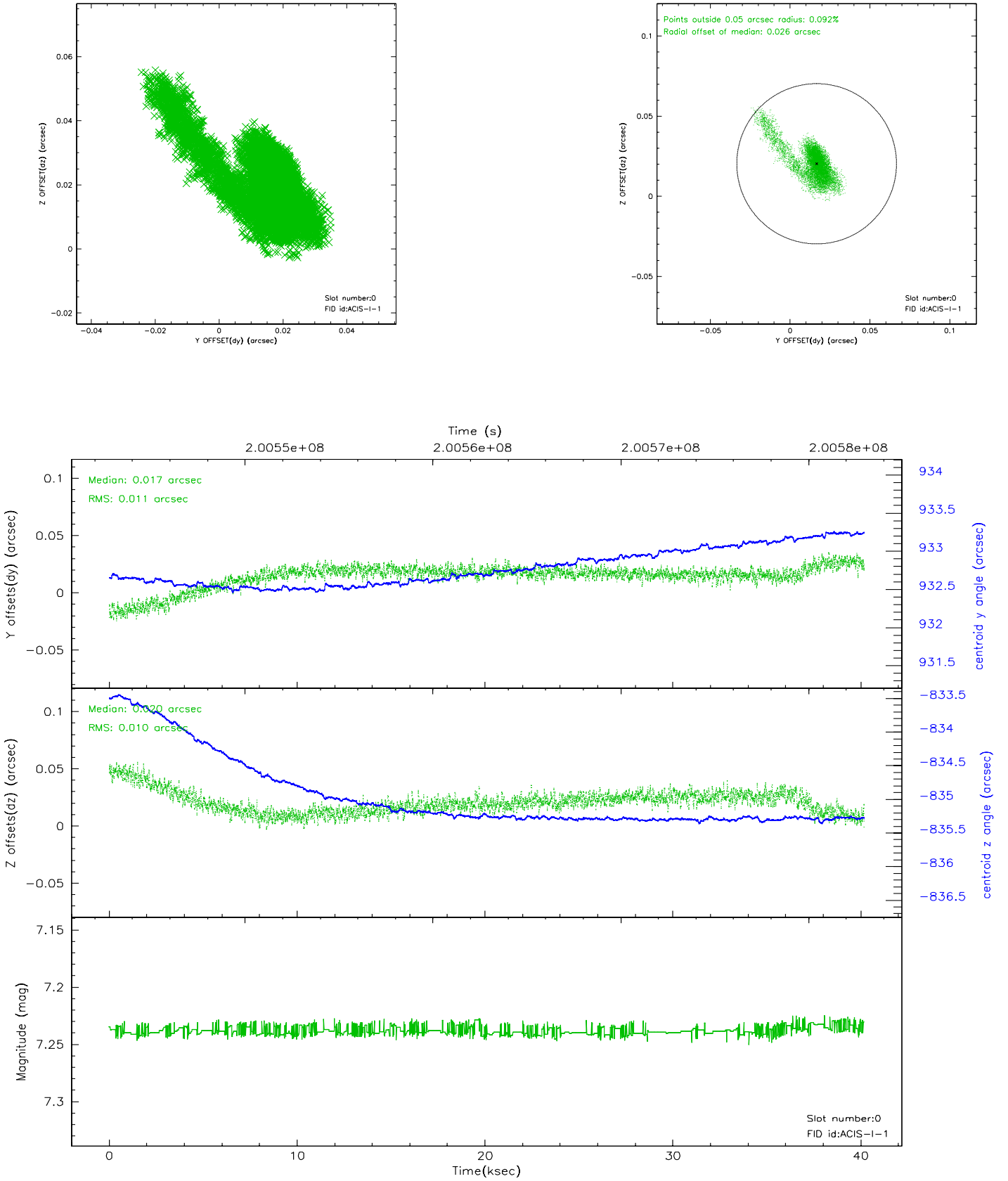


2.4.5 Slot 7

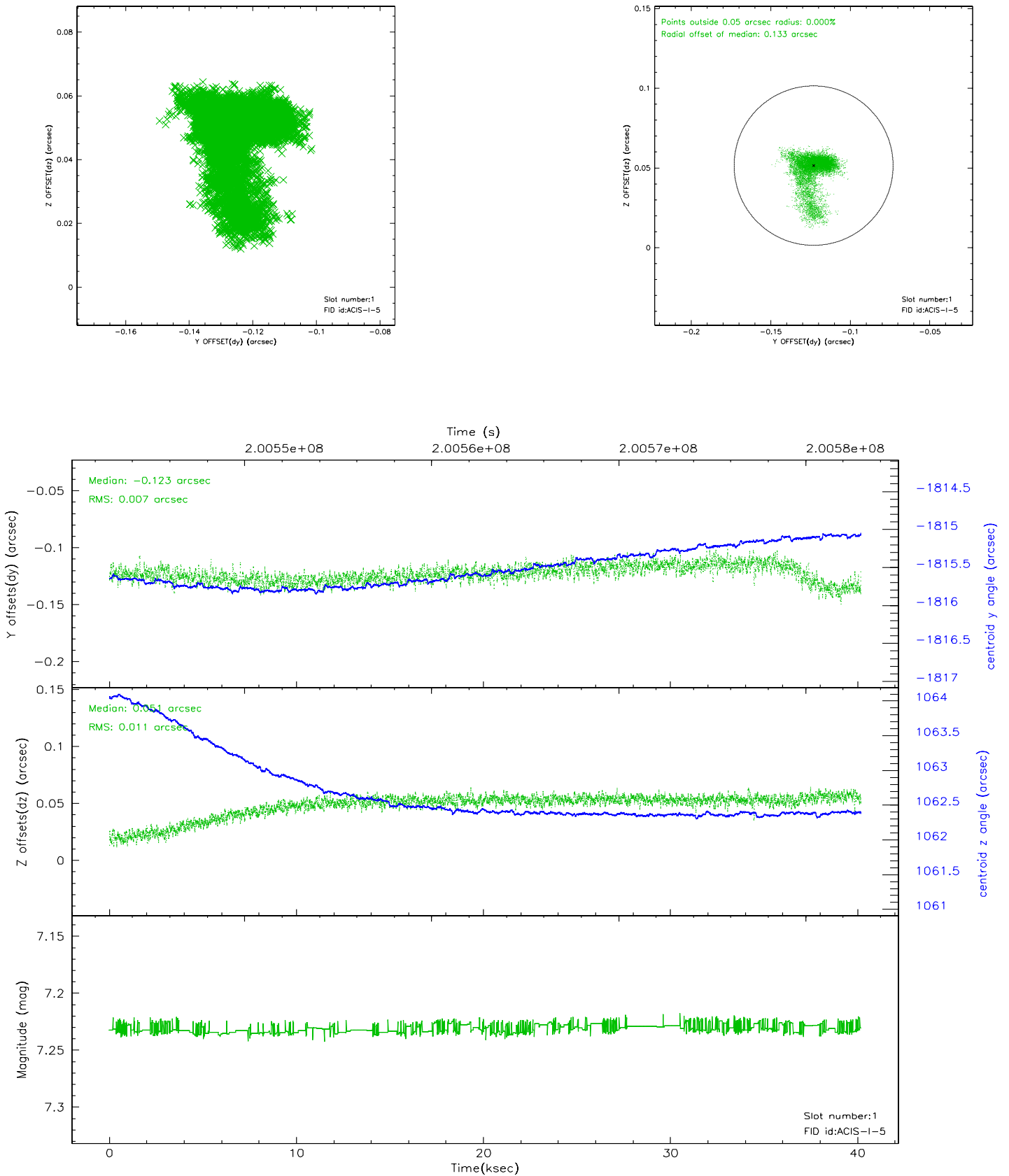


2.5 FID Slots

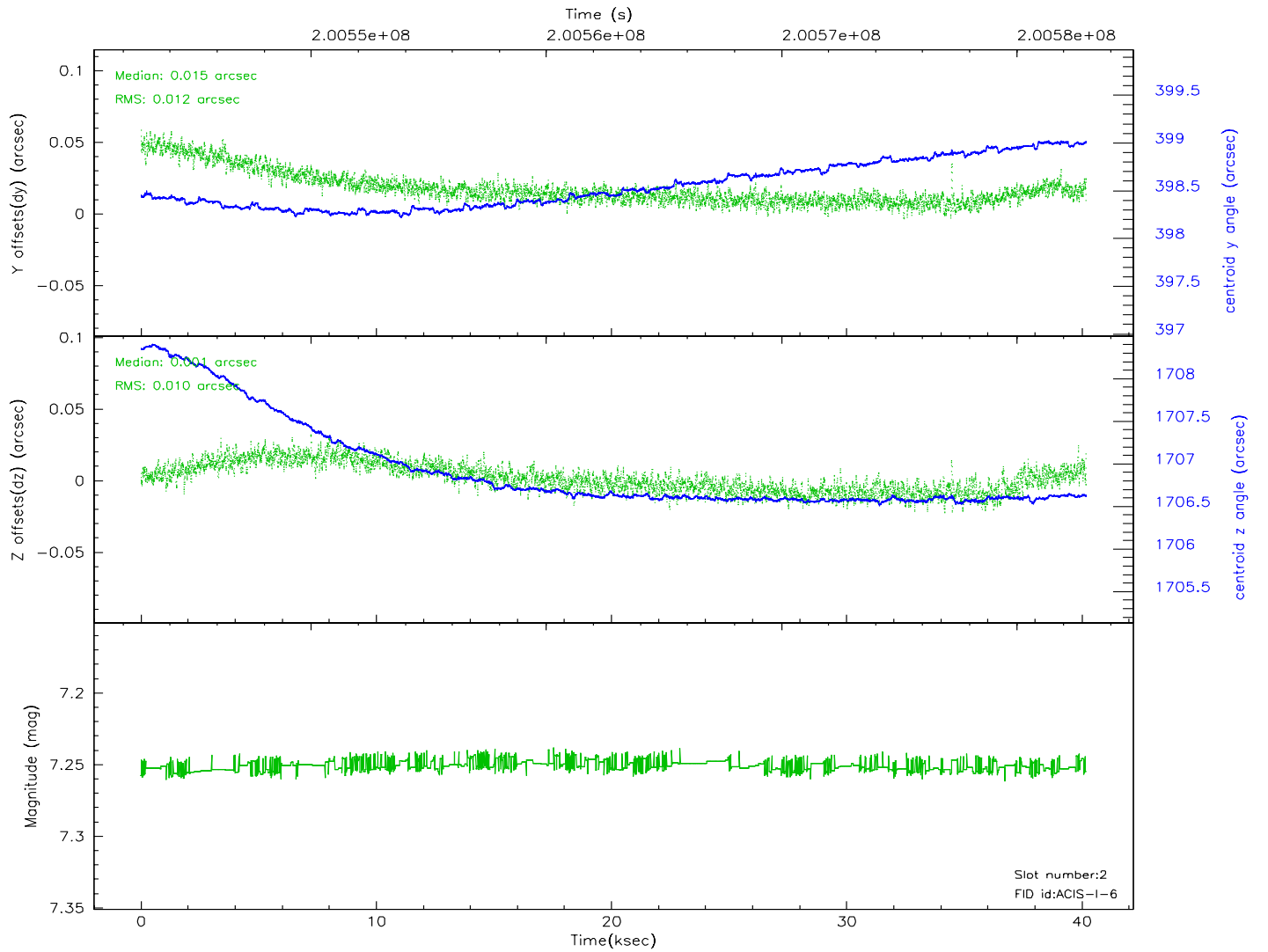
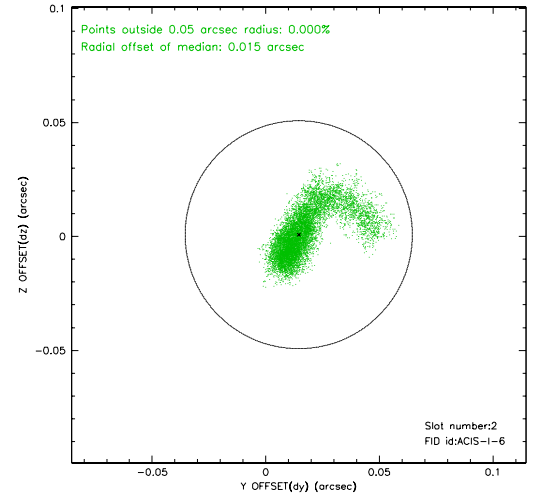
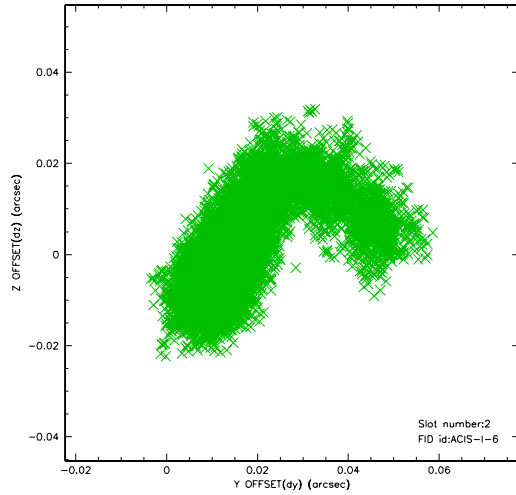
2.5.1 Slot 0



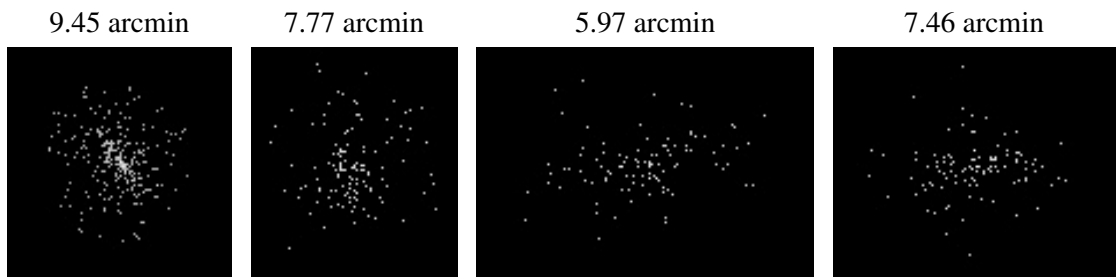
2.5.2 Slot 1



2.5.3 Slot 2



3 Point Sources



A Summary

A.1 Status

V&V Scientist	Beth Sundheim
V&V Date (YYYY-MM-DD)	2006.05.19
V&V Edition	1
V&V Disposition and Status	OK
V&V Charge Time	40.141

A.2 Comments

Slot 7 was not included in aspect solution.