

V&V Reference Report

L2 ASCDS Version : 7.6.7.2

Observation 4956 - L2 Version 001
Chandra X-Ray Center

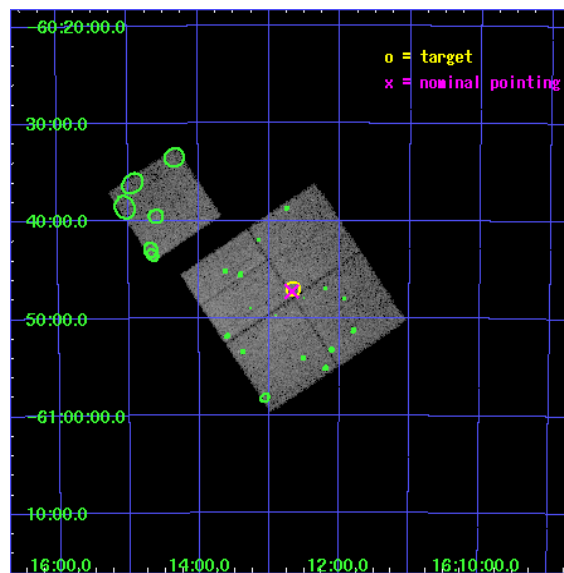
L2 Processing Date : May 1 2006

Contents

1	Front	2
2	OBI	3
2.1	OBI	3
2.1.1	Images	3
2.1.2	Bias	3
2.1.3	Parameters	4
2.1.4	Events	4
2.2	Compared Parameters	5
2.3	Aspect	6
2.4	Star Slots	9
2.4.1	Slot 3	9
2.4.2	Slot 4	10
2.4.3	Slot 5	11
2.4.4	Slot 6	12
2.4.5	Slot 7	13
2.5	FID Slots	14
2.5.1	Slot 0	14
2.5.2	Slot 1	15
2.5.3	Slot 2	16
3	Point Sources	17
A	Summary	18
A.1	Status	18
A.2	Comments	18

1 Front

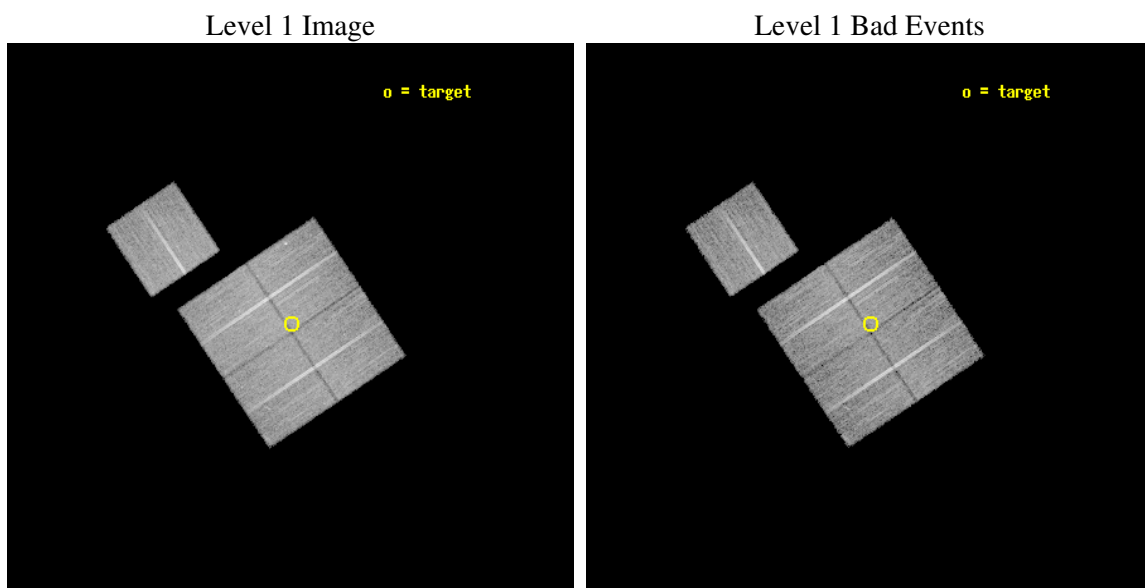
seq_num	800402
obs_id	4956
title	The Cluster A3627 -- The Nearest Major Merger
observer	Dr. Christine Jones
object	Abell 3627
dtcycle	0
cycle	P
ra_targ	243.16429
dec_targ	-60.784085
ra_nom	243.16946405039
dec_nom	-60.787955033552
roll_nom	326.21318890092
revision	2
ontime	14703.29997173
livetime	14511.190533187
ontime0	14693.877040952
ontime1	14703.29997173
ontime2	14703.29997173
ontime3	14703.29997173
ontime6	14703.29997173
l2events	102453



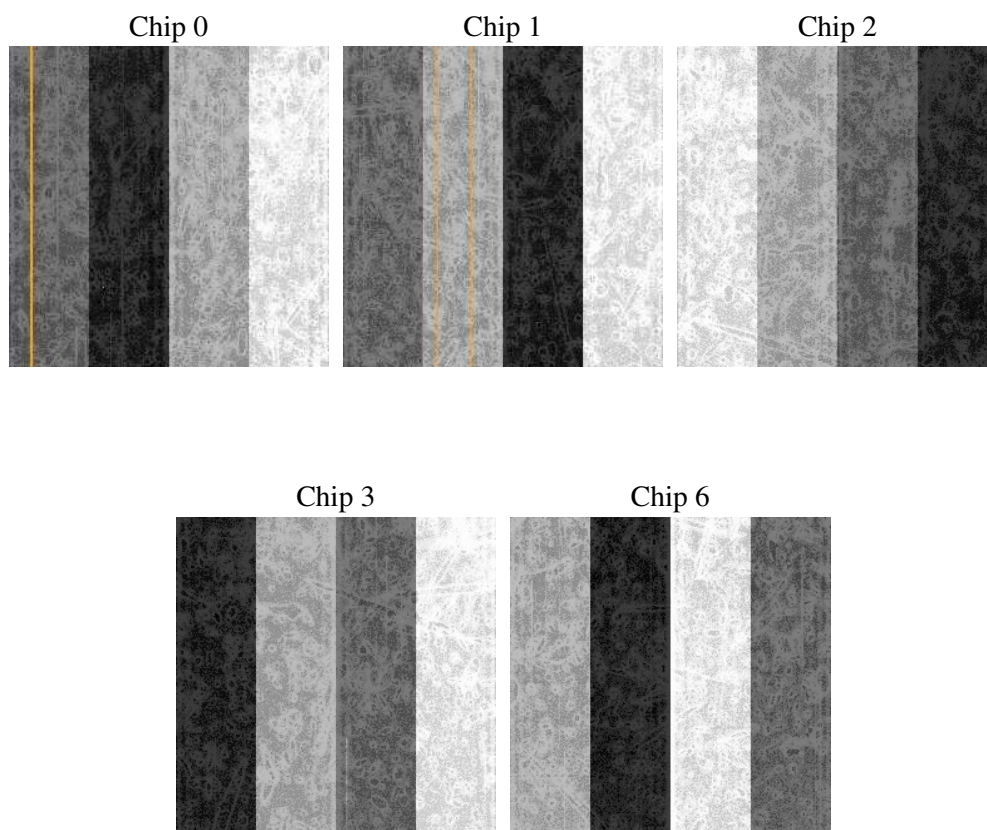
2 OBI

2.1 OBI

2.1.1 Images



2.1.2 Bias



2.1.3 Parameters

obi_num	0
ascdsver	7.6.7.2
caldsver	3.2.1
date	2006-05-01T17:31:17
revision	2

sched_exp_time	14526.000000
ontime	14775.303844094
ontime0	14765.880913317
ontime1	14775.303814203
ontime2	14775.303814203
ontime3	14775.303844094
ontime6	14775.303814203
l1events	535444

2.1.4 Events

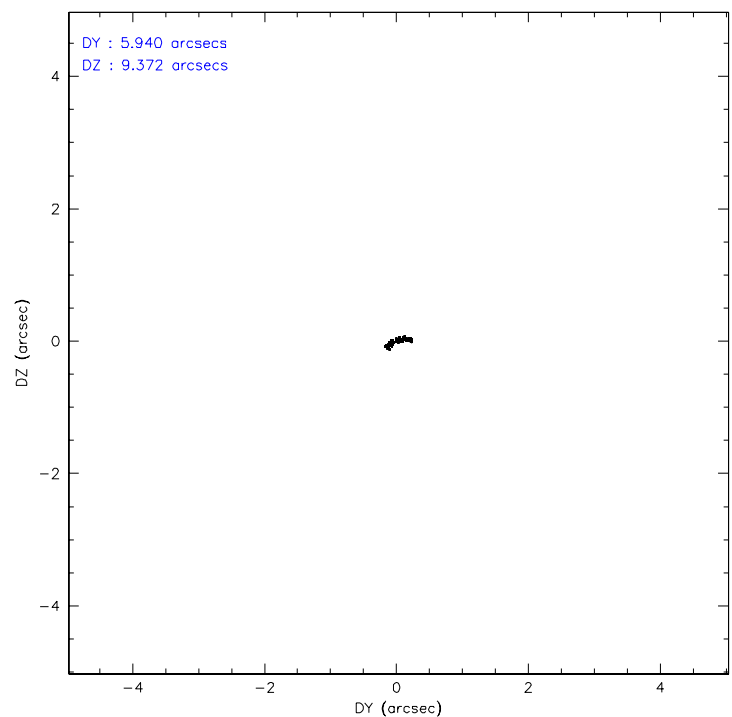
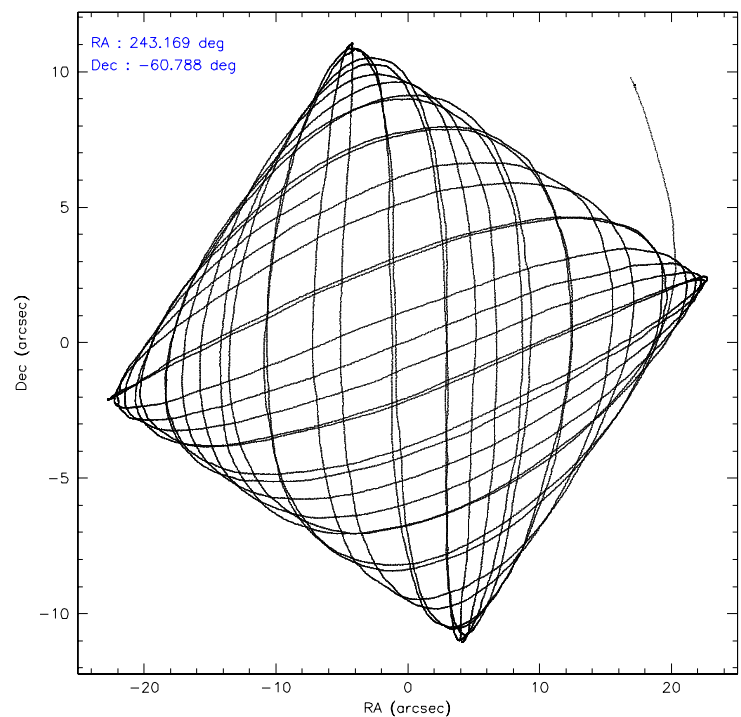
	ccd 0	ccd 1	ccd 2	ccd 3	ccd 6
level 1 events	104470	101462	119018	107428	103066
rejected events	78834	81913	89128	86911	84316
rejected %	75%	80%	74%	80%	81%

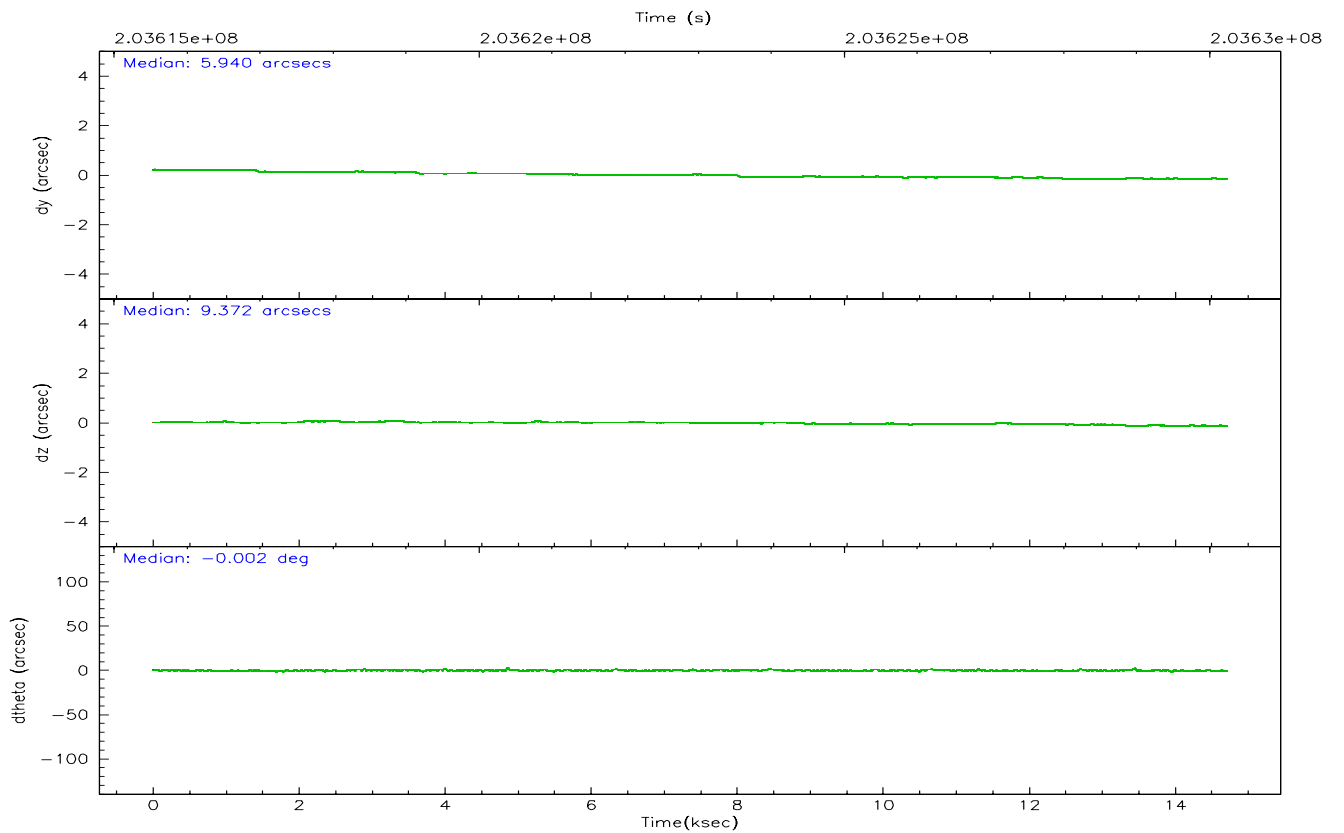
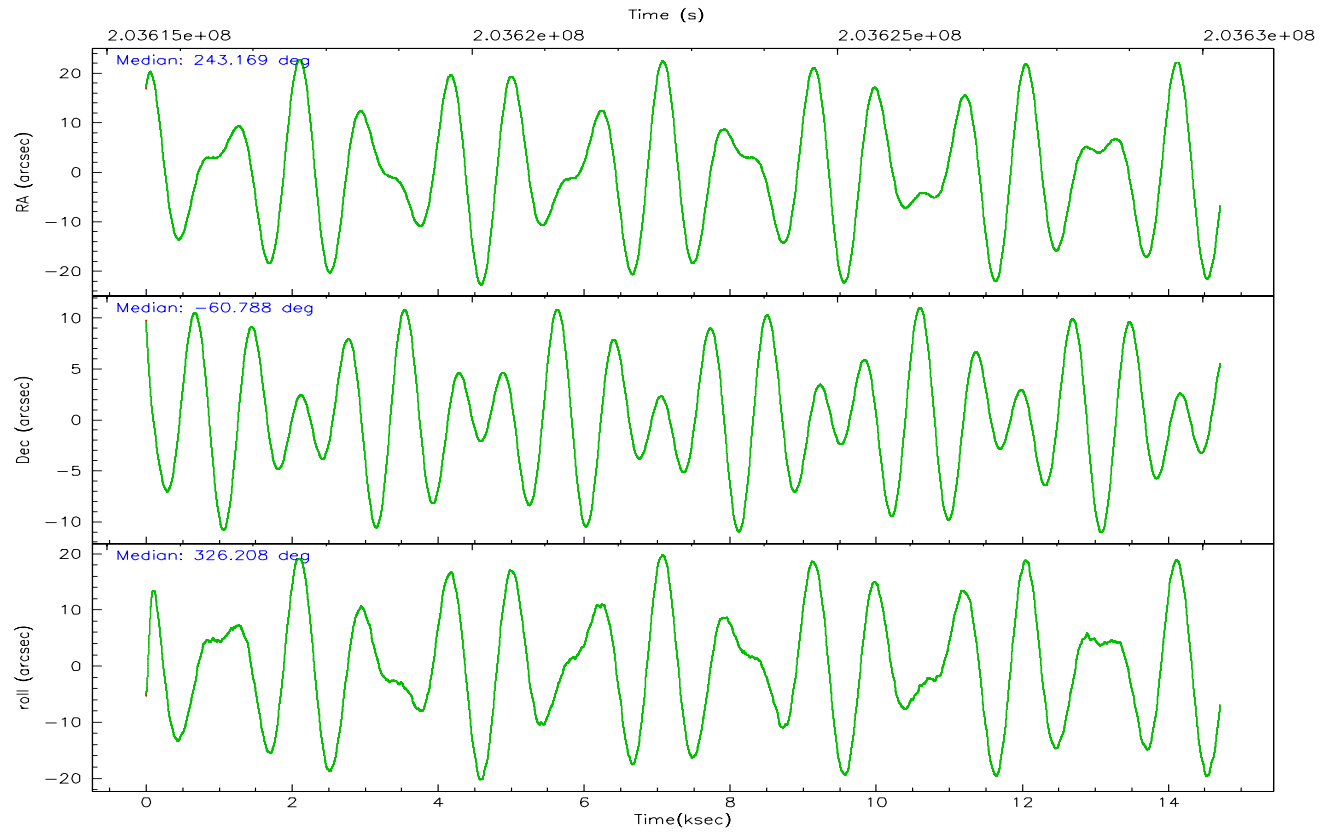
	ccd 0	ccd 1	ccd 2	ccd 3	ccd 6
grade 0 events	16425	11217	19924	12661	11096
	15%	11%	16%	11%	10%
grade 1 events	91	83	132	91	59
	0%	0%	0%	0%	0%
grade 2 events	3932	3176	4380	3188	2880
	3%	3%	3%	2%	2%
grade 3 events	1613	1418	1757	1402	1322
	1%	1%	1%	1%	1%
grade 4 events	1548	1423	1727	1351	1304
	1%	1%	1%	1%	1%
grade 5 events	3339	3516	3121	3555	3735
	3%	3%	2%	3%	3%
grade 6 events	2253	2404	2246	2023	2245
	2%	2%	1%	1%	2%
grade 7 events	75269	78225	85731	83157	80425
	72%	77%	72%	77%	78%

2.2 Compared Parameters

Parameter	Planned	Actual	Parameter	Planned	Actual
Instrument	ACIS	ACIS	Obspar format version number	6	6
Detector	ACIS-01236	ACIS-01236	Obspar file type	PREDICTED	ACTUAL
Grating	NONE	NONE	Obspar update status	NONE	UPDATED
Data mode	VFAINT	VFAINT	On-chip summing requested	N	N
Observation mode	POINTING	POINTING	Subarray requested	NONE	NONE
Pointing RA	243.113510	243.1694640503894	Alternating exposures requested	N	N
Pointing Dec	-60.786260	-60.78795503355249	Primary exposure time	0.000000	3.1
Pointing Roll	325.955680	326.2131889009207			
SIM focus pos (mm)	-0.782348	-0.7809083437167272			
SIM defocus (mm)	0	0.001439871863259334			
SIM translation stage pos (mm)	-233.592463	-233.5874344608287			
SIM translation stage offset (mm)	0	-0.005018542100998502			
Observation start time	203615721.184000	203614694.13889			
Observation start date	2004-06-14T15:54:17	2004-06-14T15:38:14			
Observation end time	203630247.184000	203630381.25208			
Observation end date	2004-06-14T19:56:23	2004-06-14T19:59:41			
Read mode	TIMED	TIMED			

2.3 Aspect



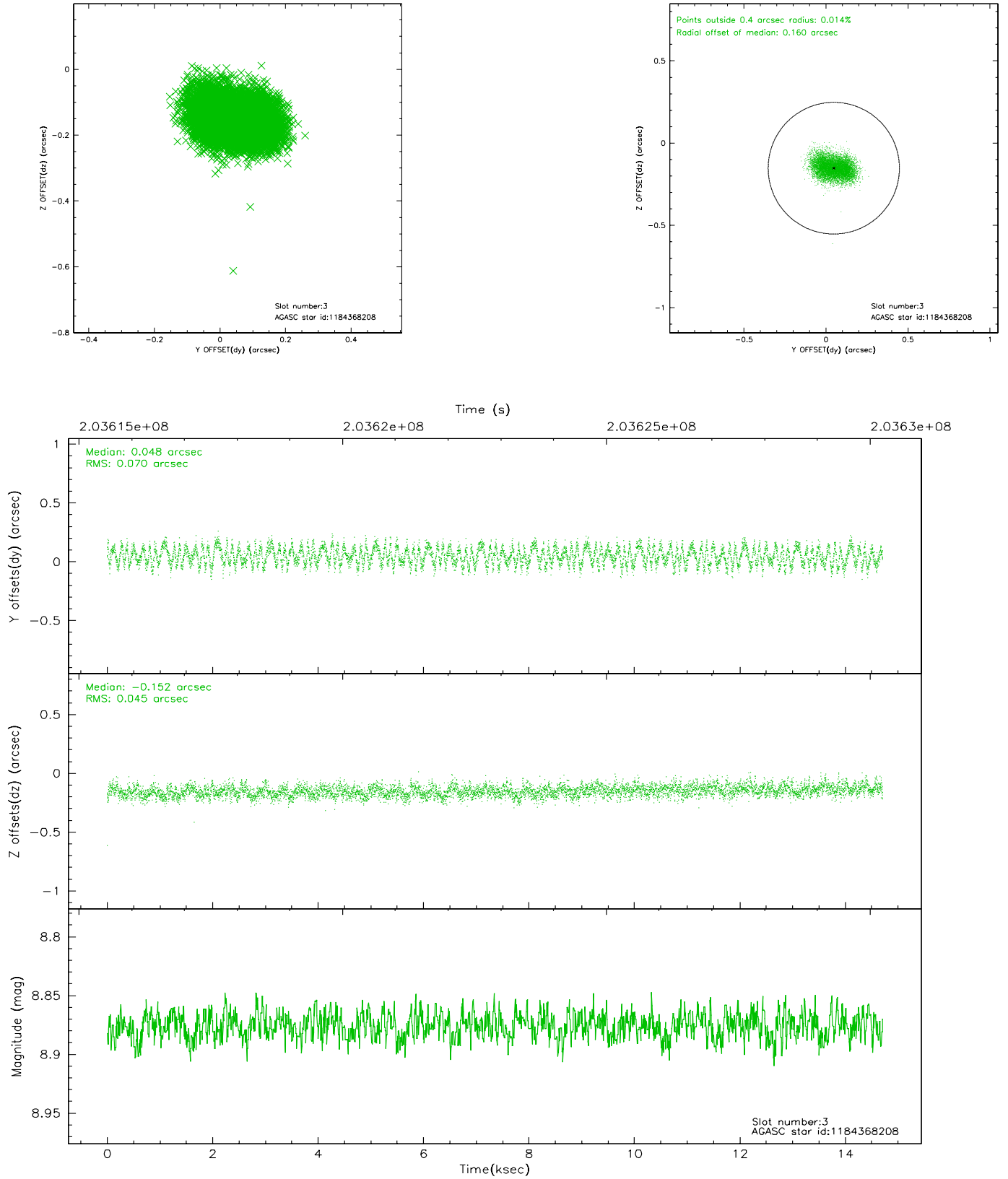


Slot Statistics

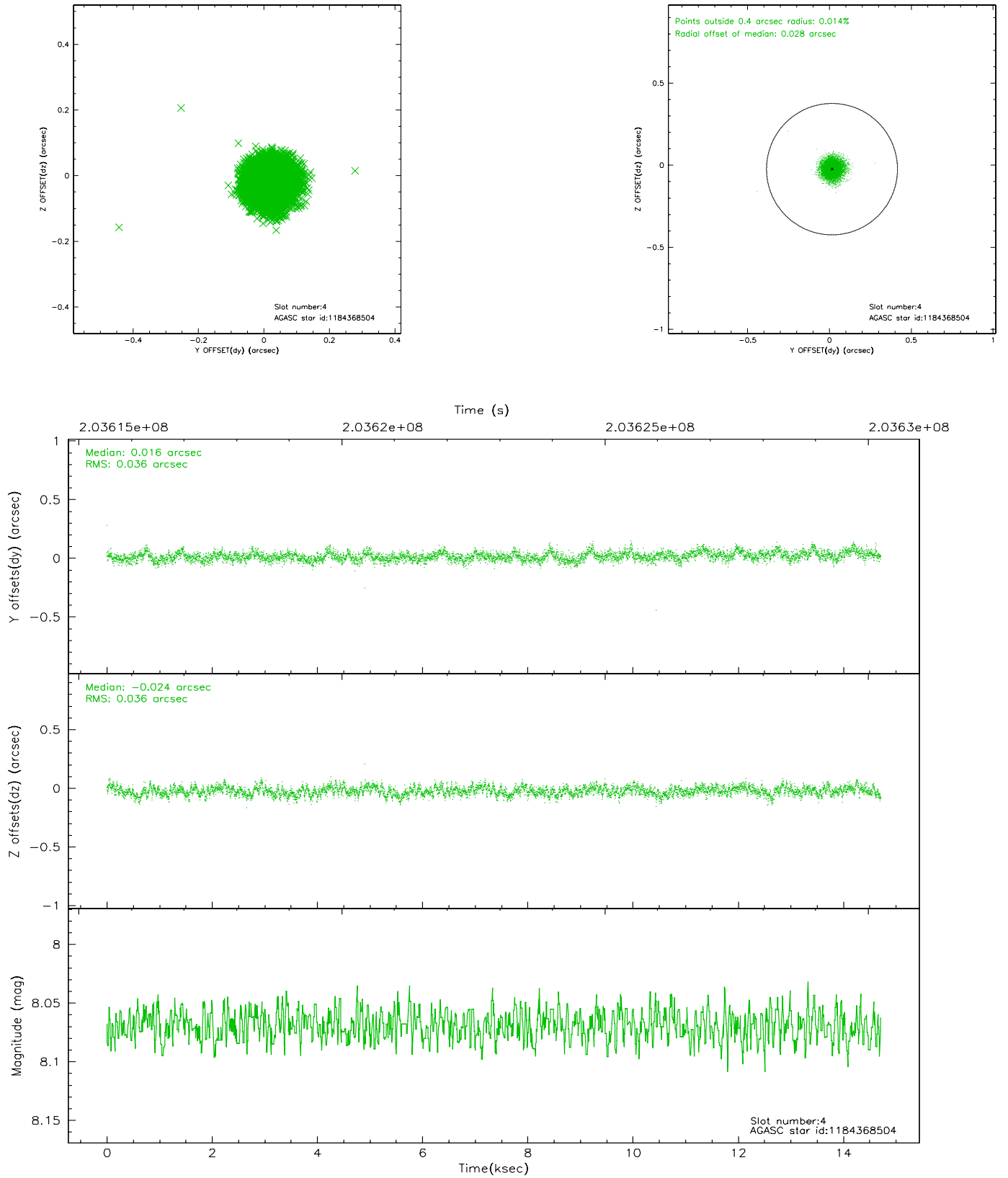
slot	status	id	mag	n_pts	med_dy	med_dz	dr1	dr2	ra	dec	mean_y	mean_z
0	FID	ACIS-I-1	7.24	3588	-0.026	0.070	0.012	0.020	0.000000	0.000000	933.74	-832.74
1	FID	ACIS-I-4	7.19	3588	0.059	-0.012	0.012	0.022	0.000000	0.000000	2154.05	1066.83
2	FID	ACIS-I-5	7.23	3589	-0.130	0.013	0.015	0.032	0.000000	0.000000	-1813.97	1065.06
3	GUIDE	1184368208	8.88	7177	0.048	-0.152	0.090	0.139	243.049252	-60.006066	-1668.18	2262.52
4	GUIDE	1184368504	8.07	7178	0.016	-0.024	0.054	0.086	244.221417	-60.888502	1822.97	768.34
5	GUIDE	1184371048	8.56	7174	0.058	0.087	0.062	0.102	243.777147	-61.267740	1925.89	-797.52
6	GUIDE	1184380840	9.03	7172	-0.087	0.061	0.099	0.155	241.482880	-61.030594	-1842.89	-2349.81
7	GUIDE	1143210296	8.67	7173	-0.036	0.032	0.085	0.138	242.795595	-59.872579	-2317.02	2402.50

2.4 Star Slots

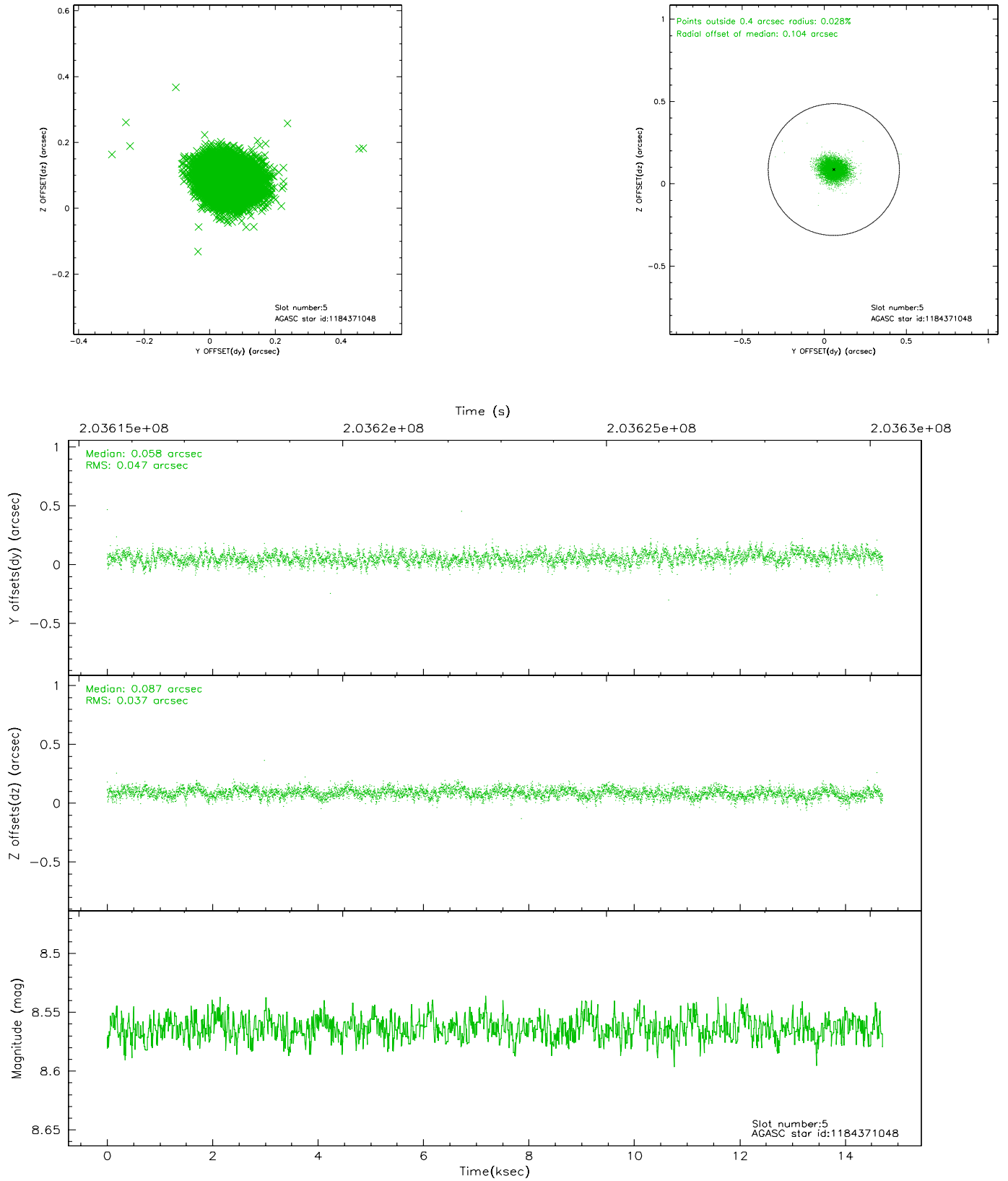
2.4.1 Slot 3



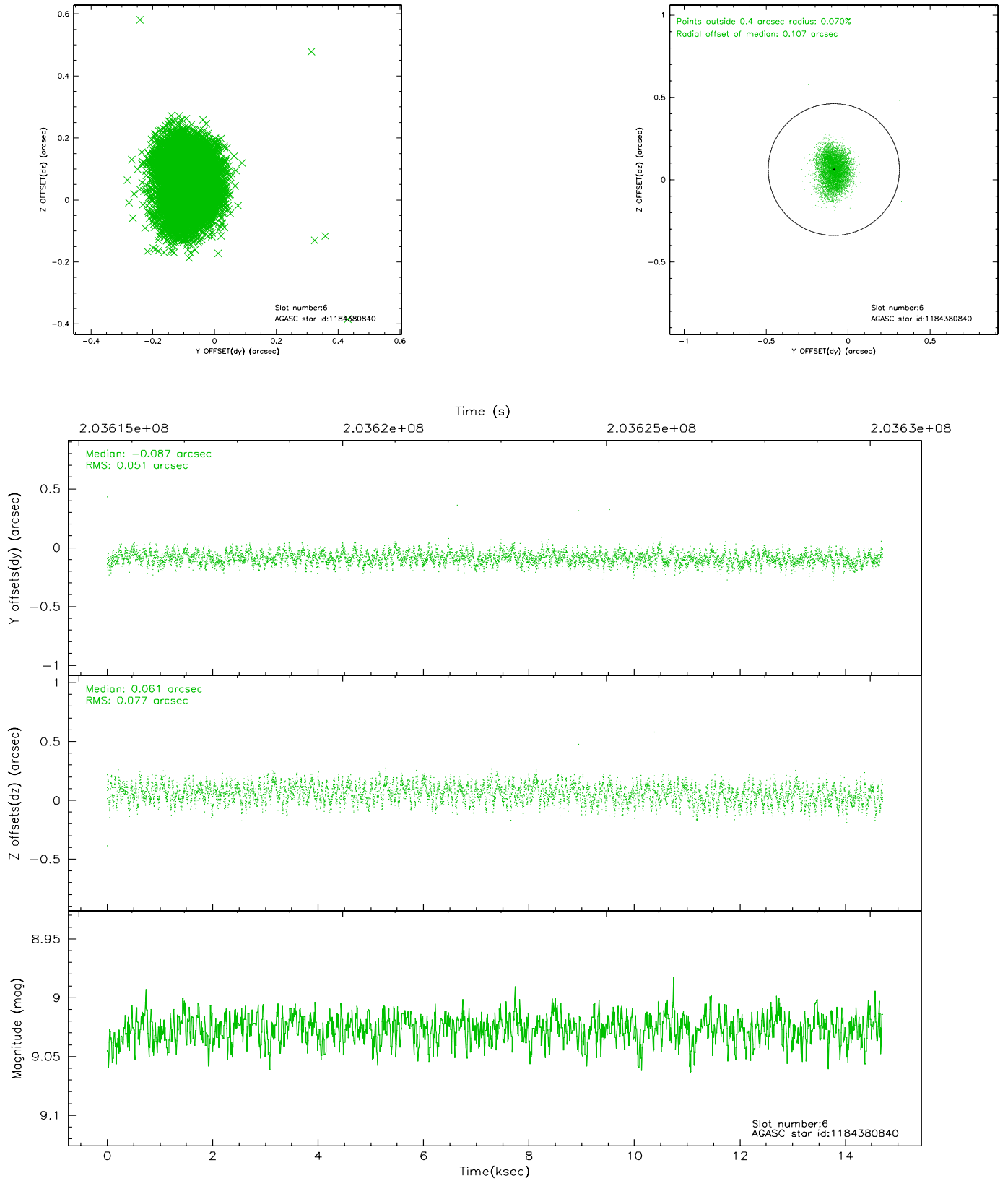
2.4.2 Slot 4



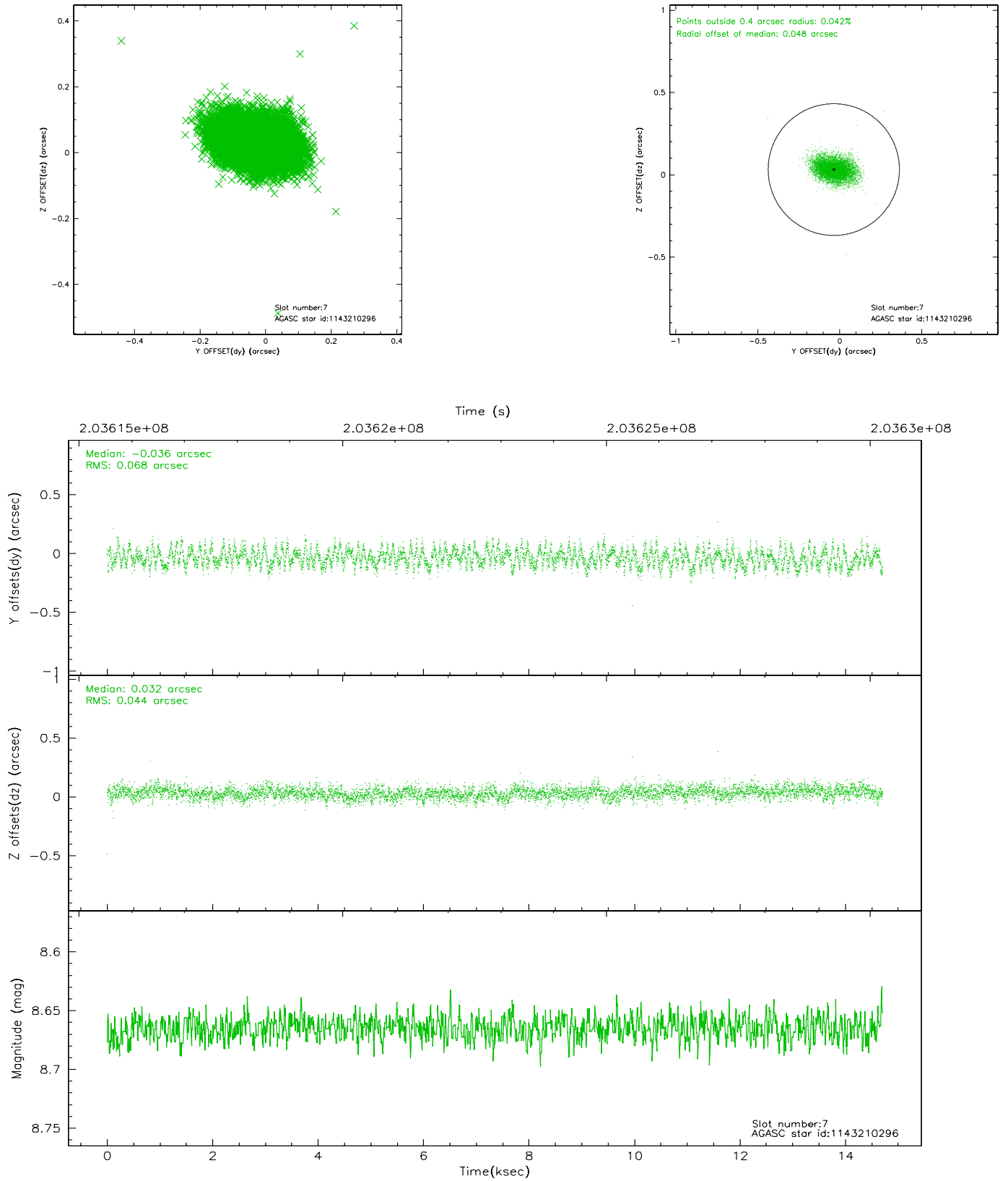
2.4.3 Slot 5



2.4.4 Slot 6

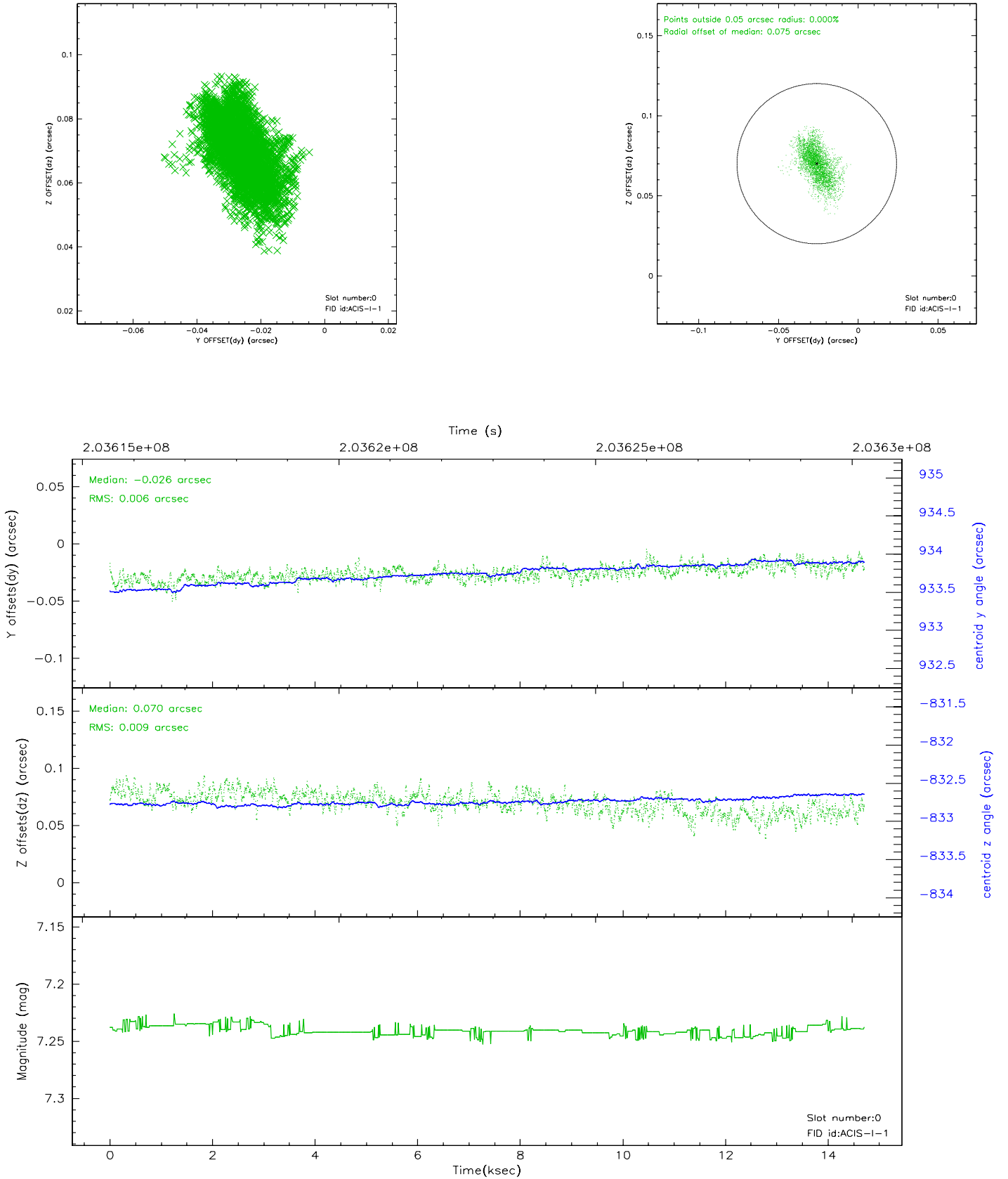


2.4.5 Slot 7

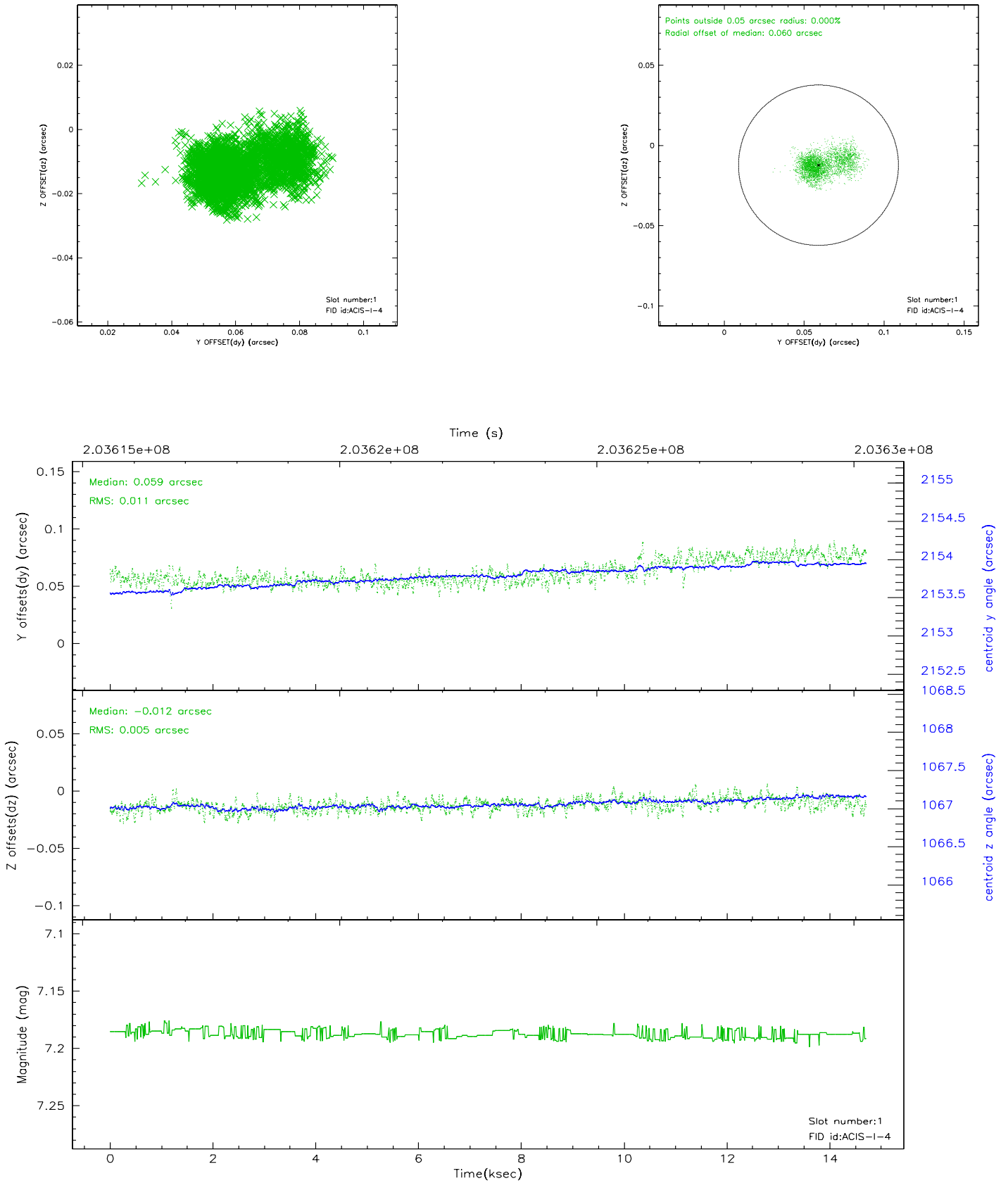


2.5 FID Slots

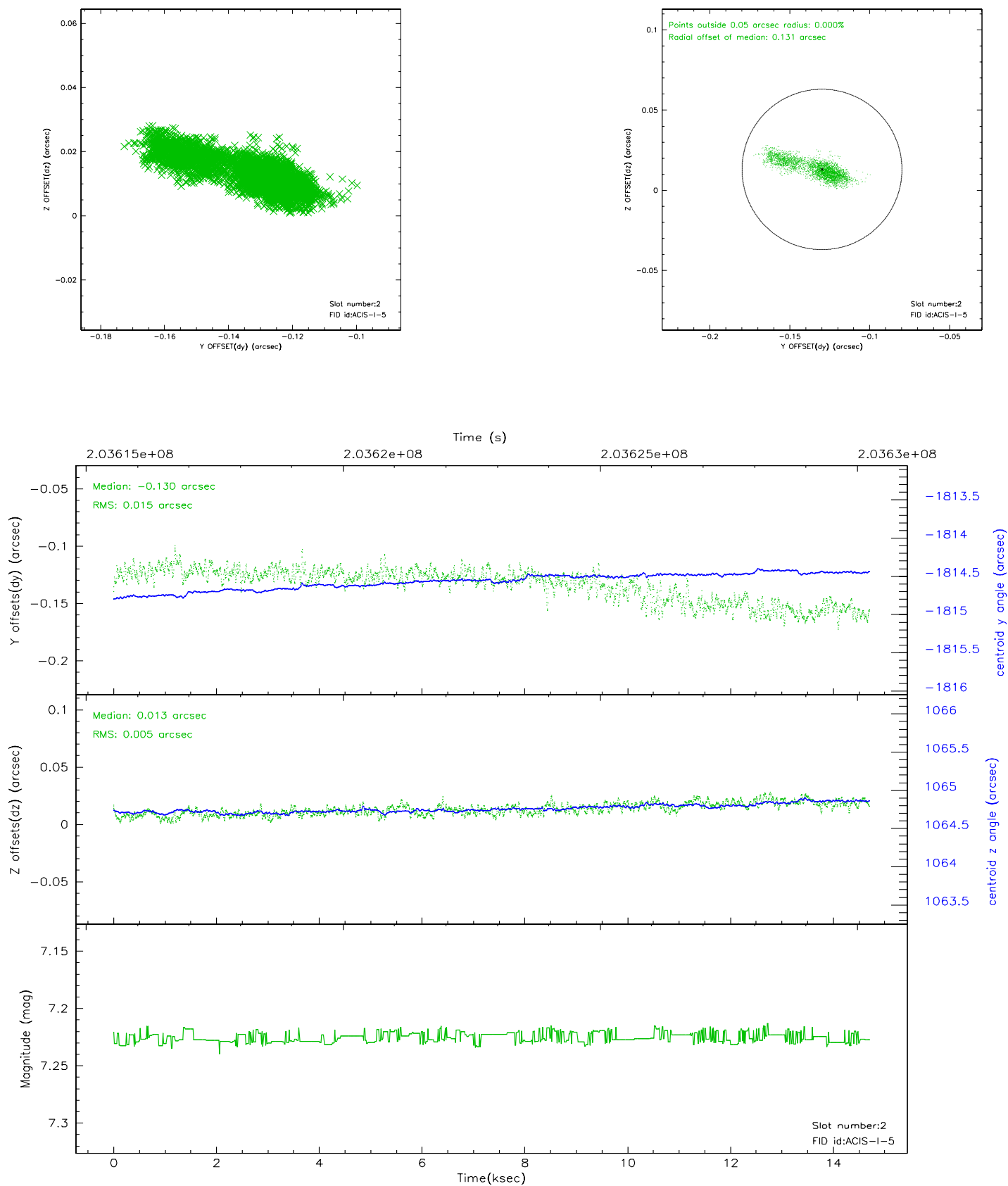
2.5.1 Slot 0



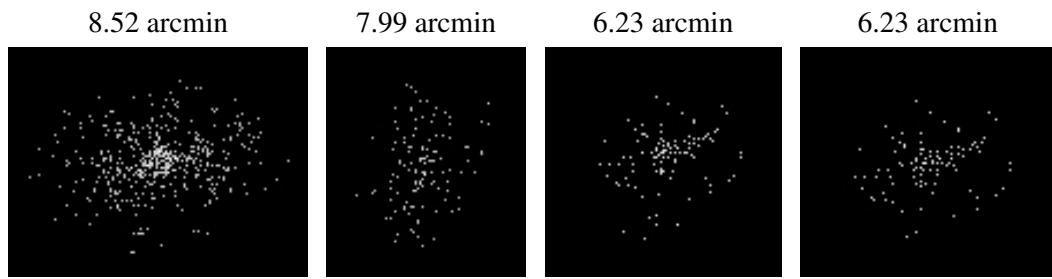
2.5.2 Slot 1



2.5.3 Slot 2



3 Point Sources



A Summary

A.1 Status

V&V Scientist	Beth Sundheim
V&V Date (YYYY-MM-DD)	2006.05.01
V&V Edition	1
V&V Disposition and Status	OK
V&V Charge Time	14.703

A.2 Comments