

V&V Reference Report

L2 ASCDS Version : 8.5

Observation 4949 - L2 Version 3
Chandra X-Ray Center

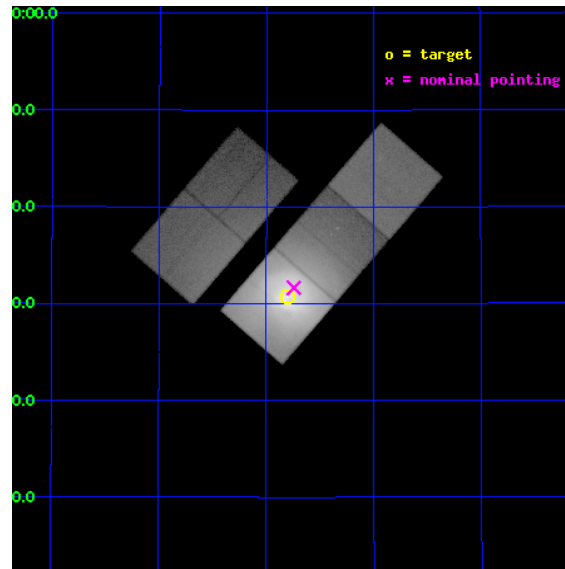
L2 Processing Date : Dec 9 2012

Contents

1	Front	2
2	OBI	3
2.1	OBI	3
2.1.1	Images	3
2.1.2	Bias	3
2.1.3	Parameters	4
2.1.4	Events	4
2.2	Compared Parameters	5
2.3	Aspect	6
2.4	Star Slots	9
2.4.1	Slot 3	9
2.4.2	Slot 4	10
2.4.3	Slot 5	11
2.4.4	Slot 6	12
2.4.5	Slot 7	13
2.5	FID Slots	14
2.5.1	Slot 0	14
2.5.2	Slot 1	15
2.5.3	Slot 2	16
A	Summary	17
A.1	Status	17
A.2	Comments	17

1 Front

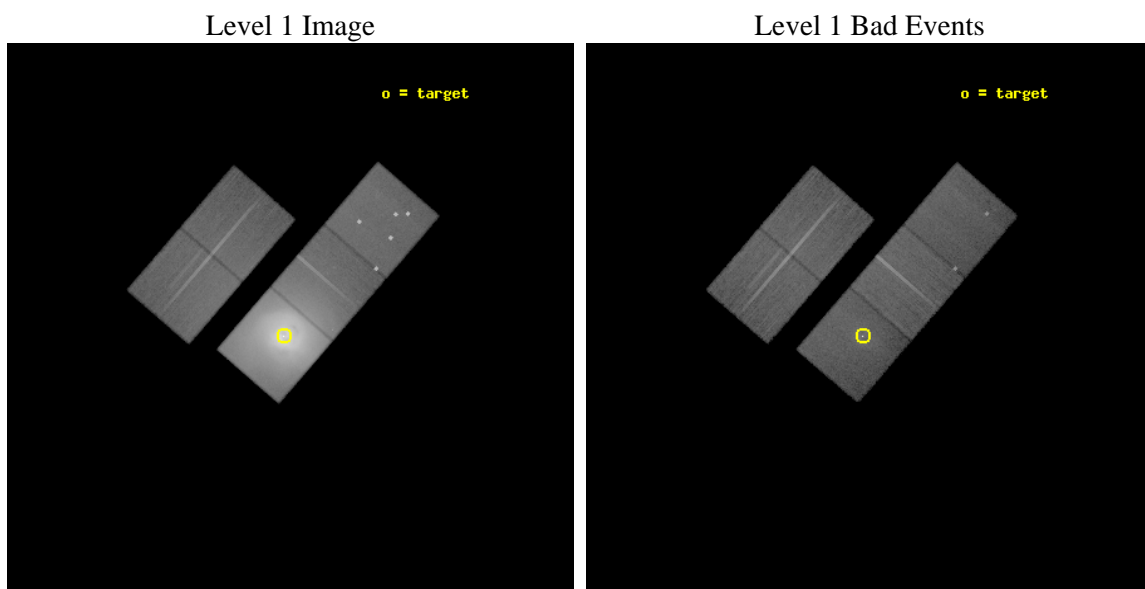
seq_num	800398	Sequence number
obs_id	4949	Observation id
title	A Megasecond Image of the Core of the Perseus Cluster	Proposal tit
observer	Professor Andrew Fabian	Principal investigator
object	Abell 426	Source name
dtcycle	0	
cycle	P	events from which exps? Prim/Second/Both
ra_targ	49.950833	Observer's specified target RA [deg]
dec_targ	41.511722	Observer's specified target Dec [deg]
ra_nom	49.935689409095	Nominal RA [deg]
dec_nom	41.527435517854	Nominal Dec [deg]
roll_nom	130.8706769817	Nominal Roll [deg]
revision	3	Processing version of data
ontime	29771.354796886	Sum of GTIs [s]
livetime	29382.370129113	Livetime [s]
ontime2	29771.190646768	Sum of GTIs [s]
ontime3	29771.231686771	Sum of GTIs [s]
ontime5	29771.313756883	Sum of GTIs [s]
ontime6	29771.27271688	Sum of GTIs [s]
ontime7	29771.354796886	Sum of GTIs [s]
l2events	2930730	Number of level 2 events



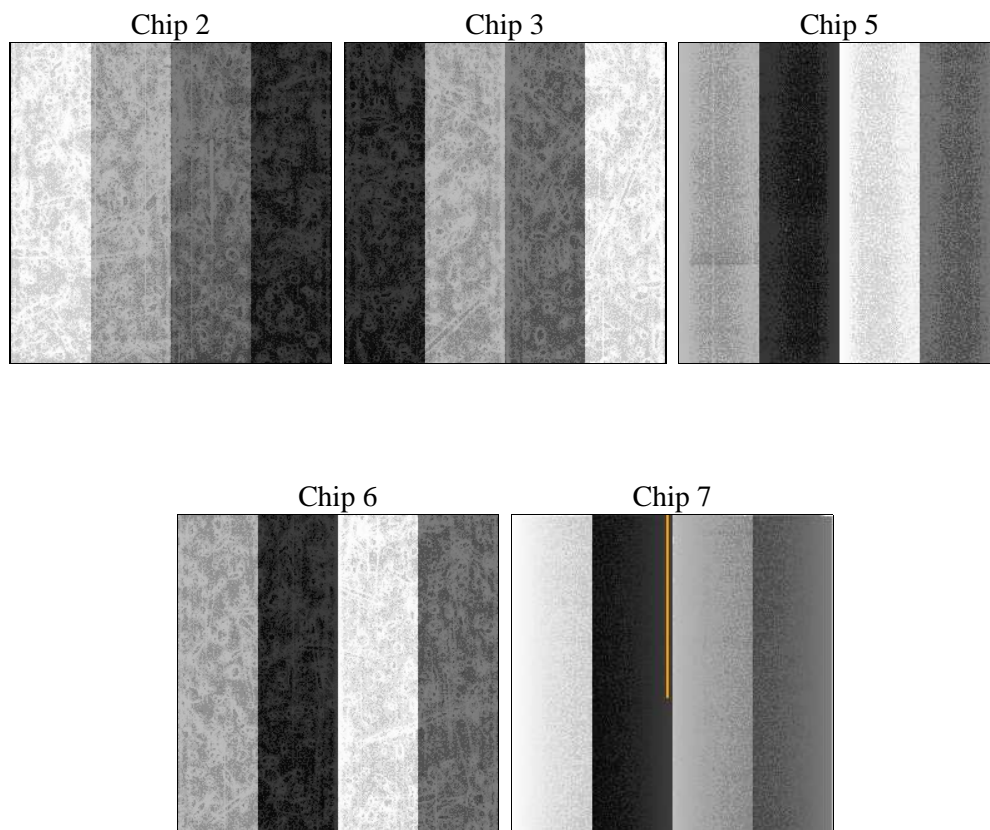
2 OBI

2.1 OBI

2.1.1 Images



2.1.2 Bias



2.1.3 Parameters

obi_num	0	Obi number	sched_exp_time	30000.000000	[s] Scheduled observation exposure time
ascdsver	8.5	Processing system revision	ontime	29771.354796886	Sum of GTIs [s]
caldsver	4.5.4	 	ontime2	29771.190646768	Sum of GTIs [s]
date	2012-12-09T21:23:46	Date and time of file creation	ontime3	29771.231686771	Sum of GTIs [s]
revision	3	Processing version of data	ontime5	29771.313756883	Sum of GTIs [s]
			ontime6	29771.27271688	Sum of GTIs [s]
			ontime7	29771.354796886	Sum of GTIs [s]
			l1events	3862201	Number of level 1 events

2.1.4 Events

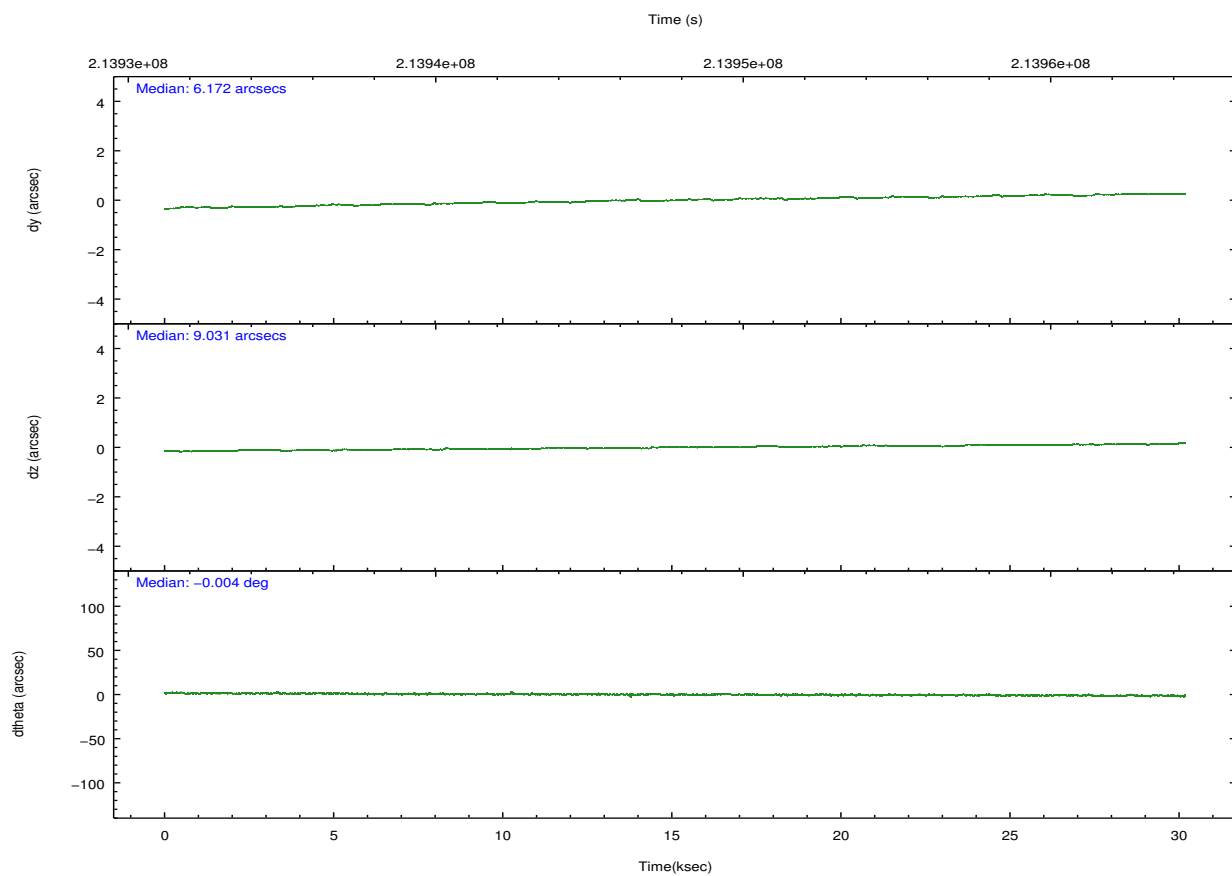
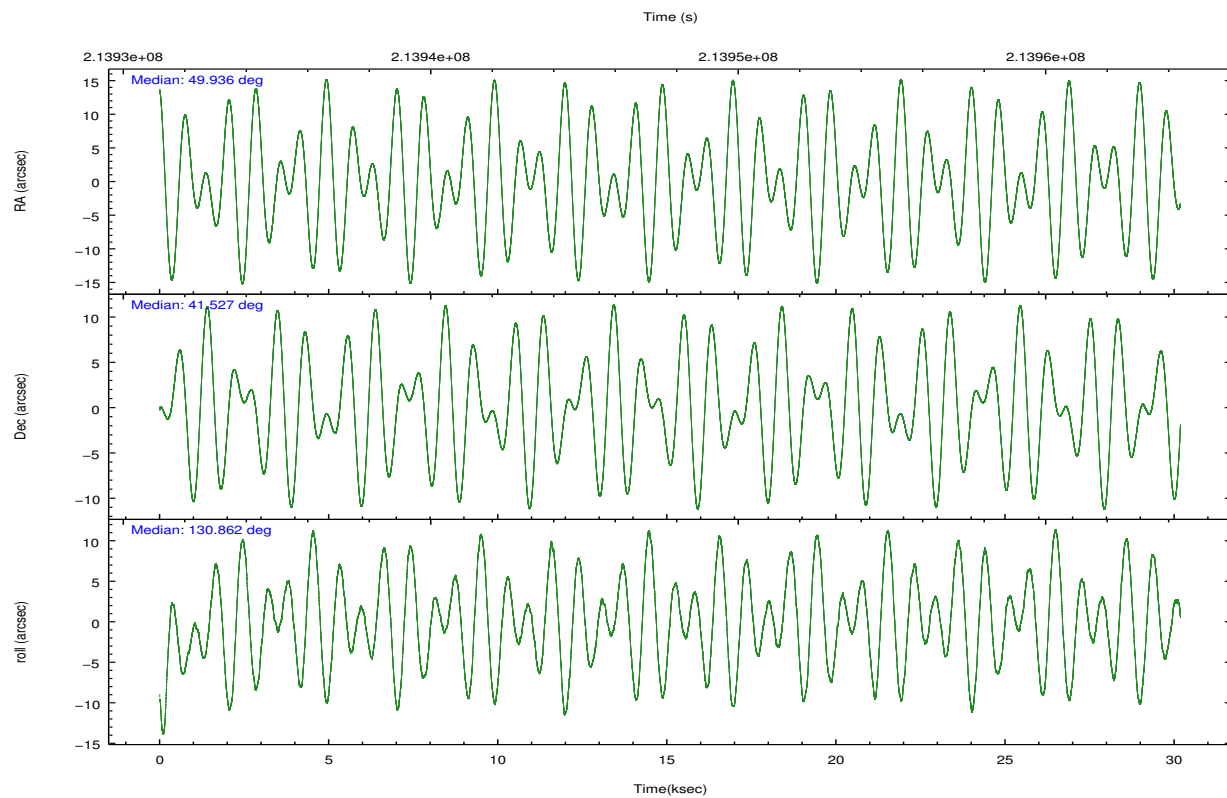
	ccd 2	ccd 3	ccd 5	ccd 6	ccd 7
level 1 events	266293	314595	344899	481282	2455132
rejected events	185129	184244	135701	186443	146337
rejected %	69%	58%	39%	38%	5%

	ccd 2	ccd 3	ccd 5	ccd 6	ccd 7
grade 0 events	57518	97413	53988	228519	633957
	21%	30%	15%	47%	25%
grade 1 events	398	584	2063	1032	1801
	0%	0%	0%	0%	0%
grade 2 events	10609	15097	56055	32705	607073
	3%	4%	16%	6%	24%
grade 3 events	4099	5873	10704	10836	270164
	1%	1%	3%	2%	11%
grade 4 events	4005	5655	10557	10740	265422
	1%	1%	3%	2%	10%
grade 5 events	6584	8024	22567	8707	38678
	2%	2%	6%	1%	1%
grade 6 events	4954	6347	77934	12103	532691
	1%	2%	22%	2%	21%
grade 7 events	178126	175602	111031	176640	105346
	66%	55%	32%	36%	4%

2.2 Compared Parameters

Parameter	Planned	Actual	Parameter	Planned	Actual
Instrument	ACIS	ACIS	Obspar format version number	7	7
Detector	ACIS-23567	ACIS-23567	Obspar file type	PREDICTED	ACTUAL
Grating	NONE	NONE	Obspar update status	NONE	UPDATED
Data mode	FAINT	FAINT	Number of optional ACIS chips dropped	0	0
Observation mode	POINTING	POINTING	On-chip summing requested	N	N
[deg] Pointing RA	49.970225	49.93568940909496	Subarray requested	NONE	NONE
[deg] Pointing Dec	41.518857	41.52743551785418	Alternating exposures requested	N	N
[deg] Pointing Roll	130.691155	130.8706769816996	[s] Primary exposure time	0.000000	3.1
[mm] SIM focus pos	-0.684267	-0.6828225247311905			
[mm] SIM defocus	0	0.001444936568705701			
[mm] SIM translation stage pos	-190.132523	-190.1400660498719			
[mm] SIM translation stage offset	0	0.00754346686406393			
[s] Observation start time (MET)	213932878.184000	213932501.93553			
Observation start date	2004-10-12T01:46:54	2004-10-12T01:41:41			
[s] Observation end time (MET)	213962878.184000	213963012.08689			
Observation end date	2004-10-12T10:06:54	2004-10-12T10:10:12			
Read mode	TIMED	TIMED			

2.3 Aspect

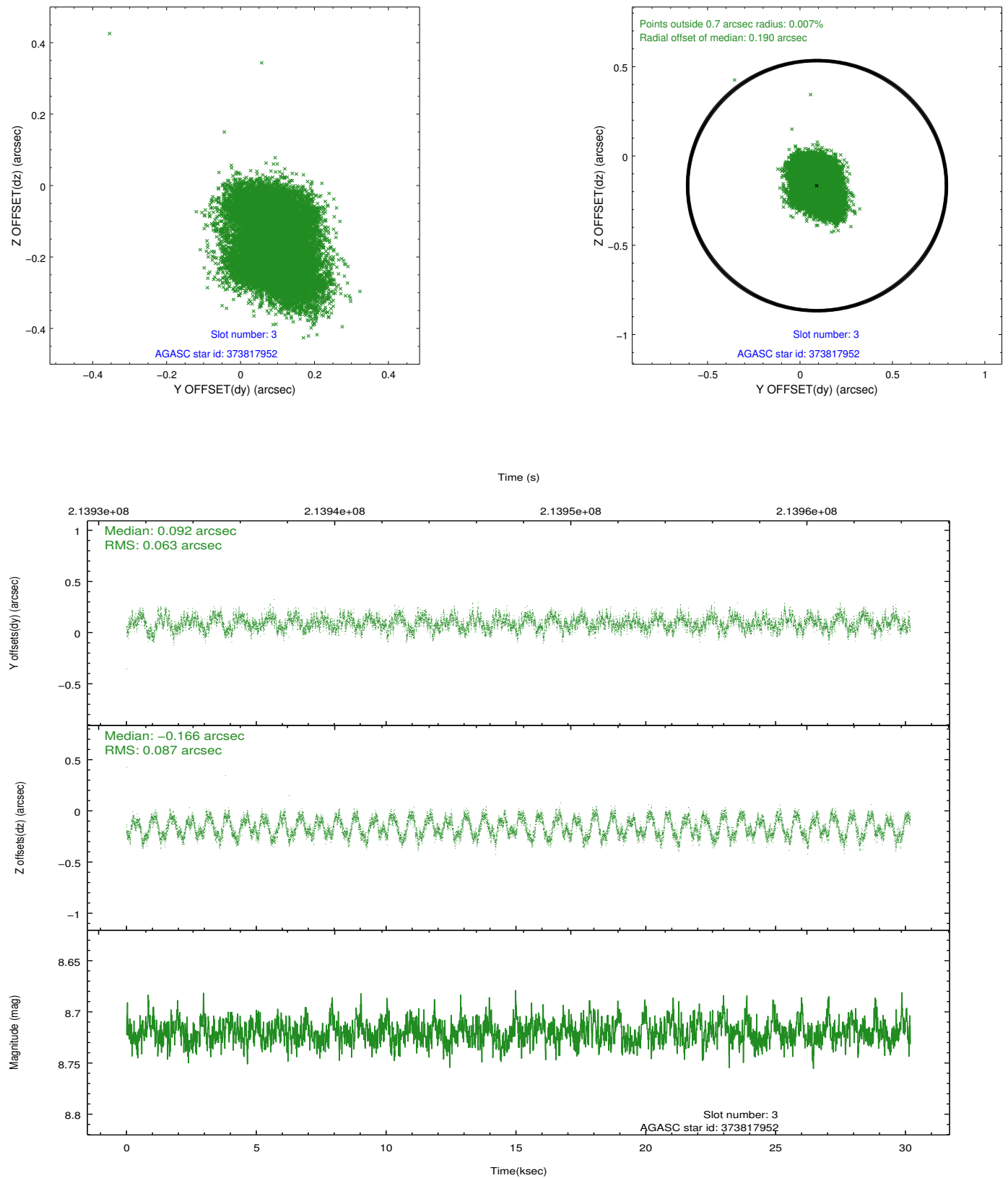


Slot Statistics

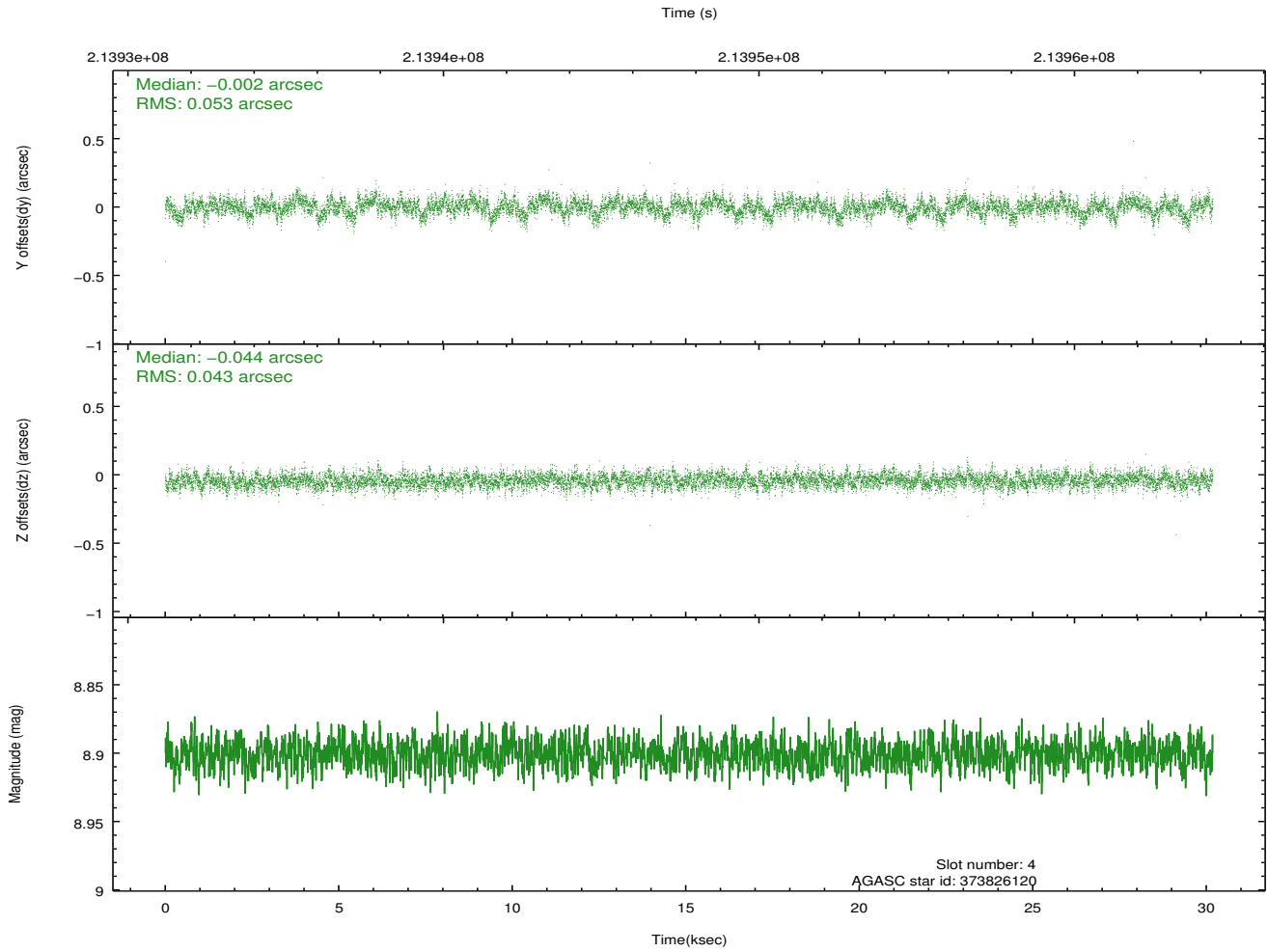
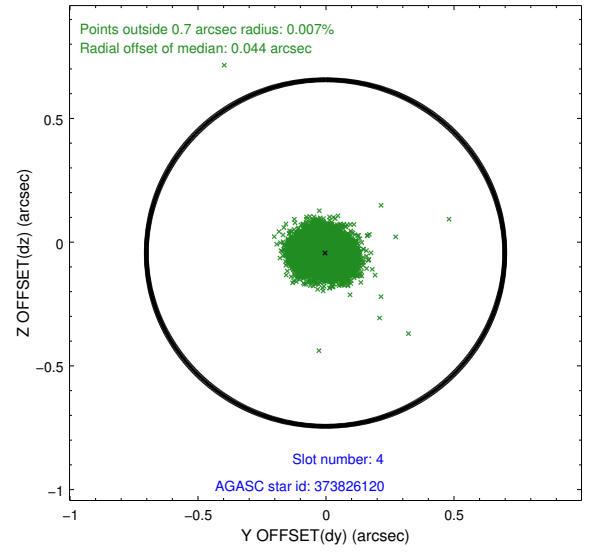
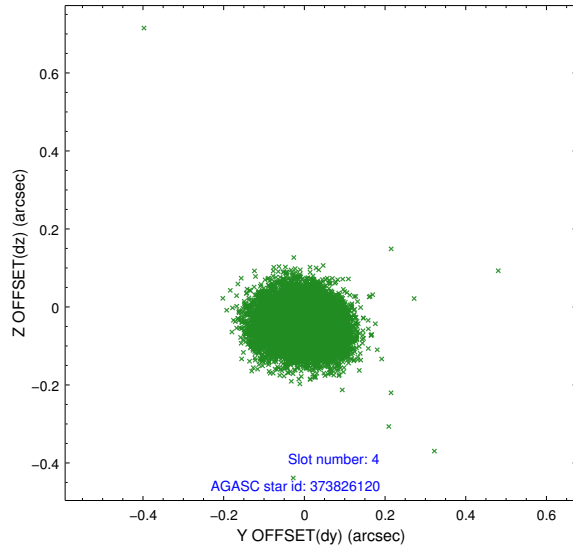
slot	status	id	mag	n_pts	med_dy	med_dz	dr1	dr2	ra	dec	mean_y	mean_z
0	FID	ACIS-S-1	7.19	7363	0.034	-0.014	0.007	0.013	0.000000	0.000000	937.15	-1725.90
1	FID	ACIS-S-5	7.24	7363	-0.084	0.025	0.007	0.011	0.000000	0.000000	-1811.89	171.67
2	FID	ACIS-S-6	7.35	7362	0.028	0.001	0.008	0.013	0.000000	0.000000	402.67	815.64
3	GUIDE	373817952	8.72	14724	0.092	-0.166	0.118	0.174	49.913424	40.978510	-1374.21	1385.09
4	GUIDE	373826120	8.90	14711	-0.002	-0.044	0.072	0.118	49.738165	41.186341	-497.14	1256.73
5	GUIDE	374352808	8.78	14719	-0.103	0.096	0.080	0.131	49.969955	42.208621	1883.61	-1617.87
6	GUIDE	376057824	8.35	14724	-0.005	0.132	0.076	0.119	50.665569	41.926280	-95.95	-2373.16
7	GUIDE	374345008	9.37	14648	0.025	-0.021	0.114	0.186	48.768668	41.619367	2399.39	2201.68

2.4 Star Slots

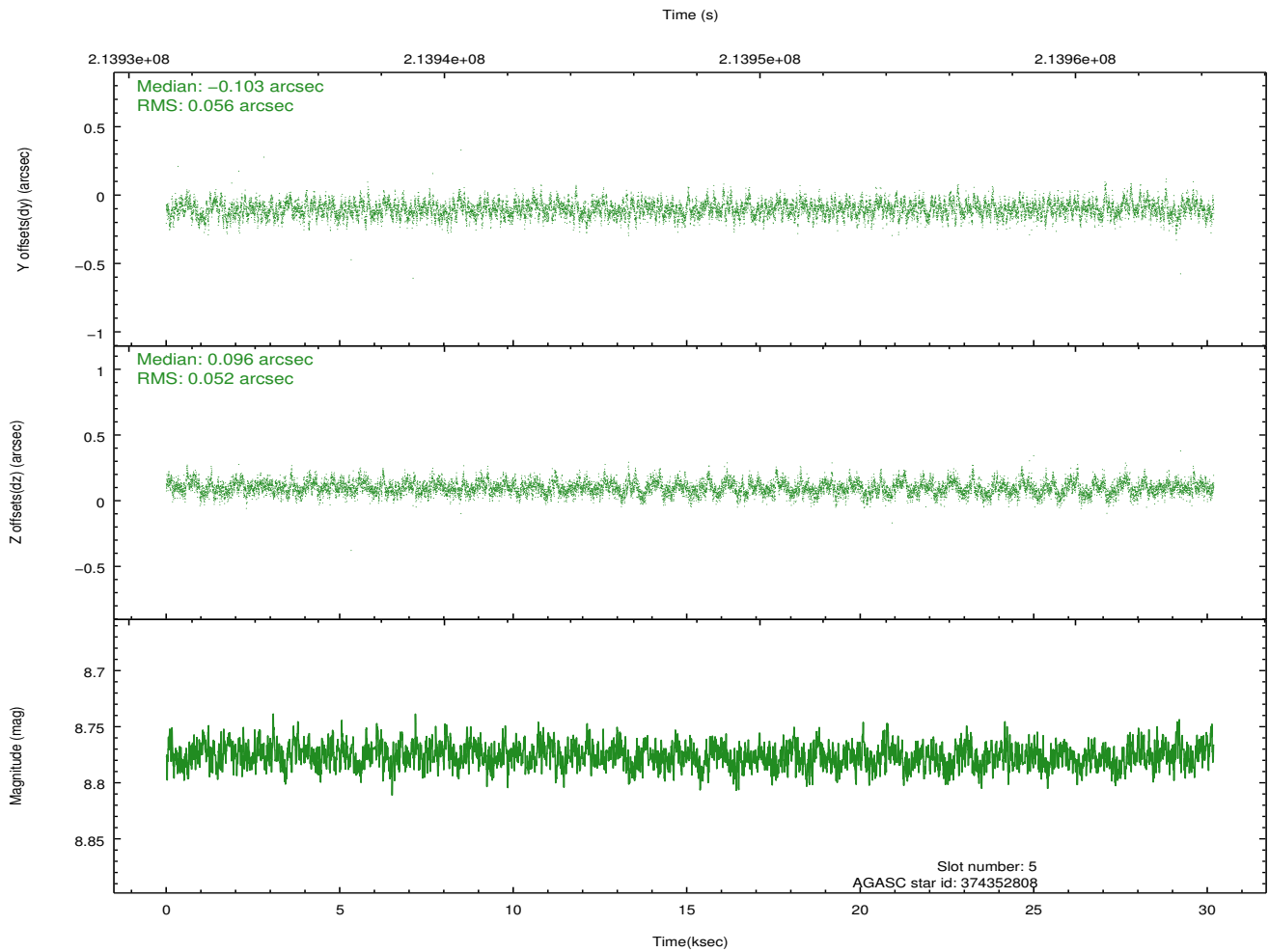
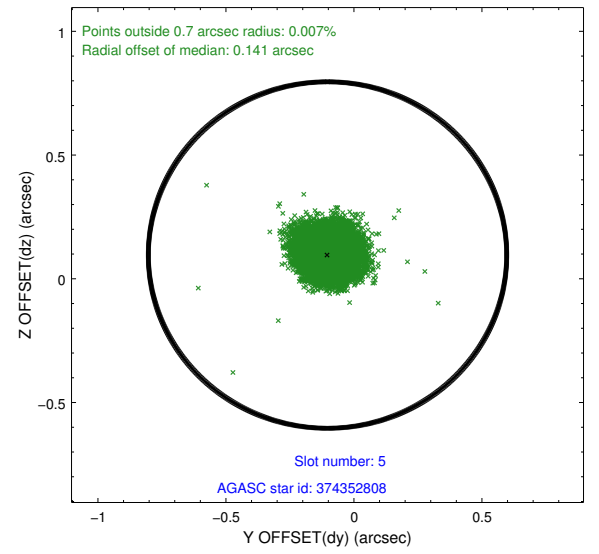
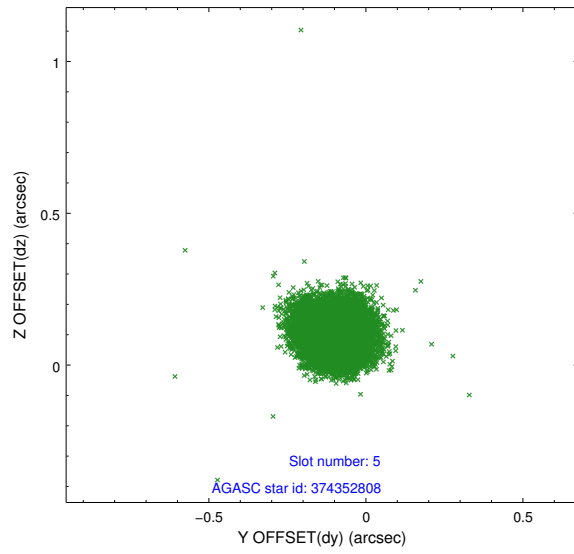
2.4.1 Slot 3



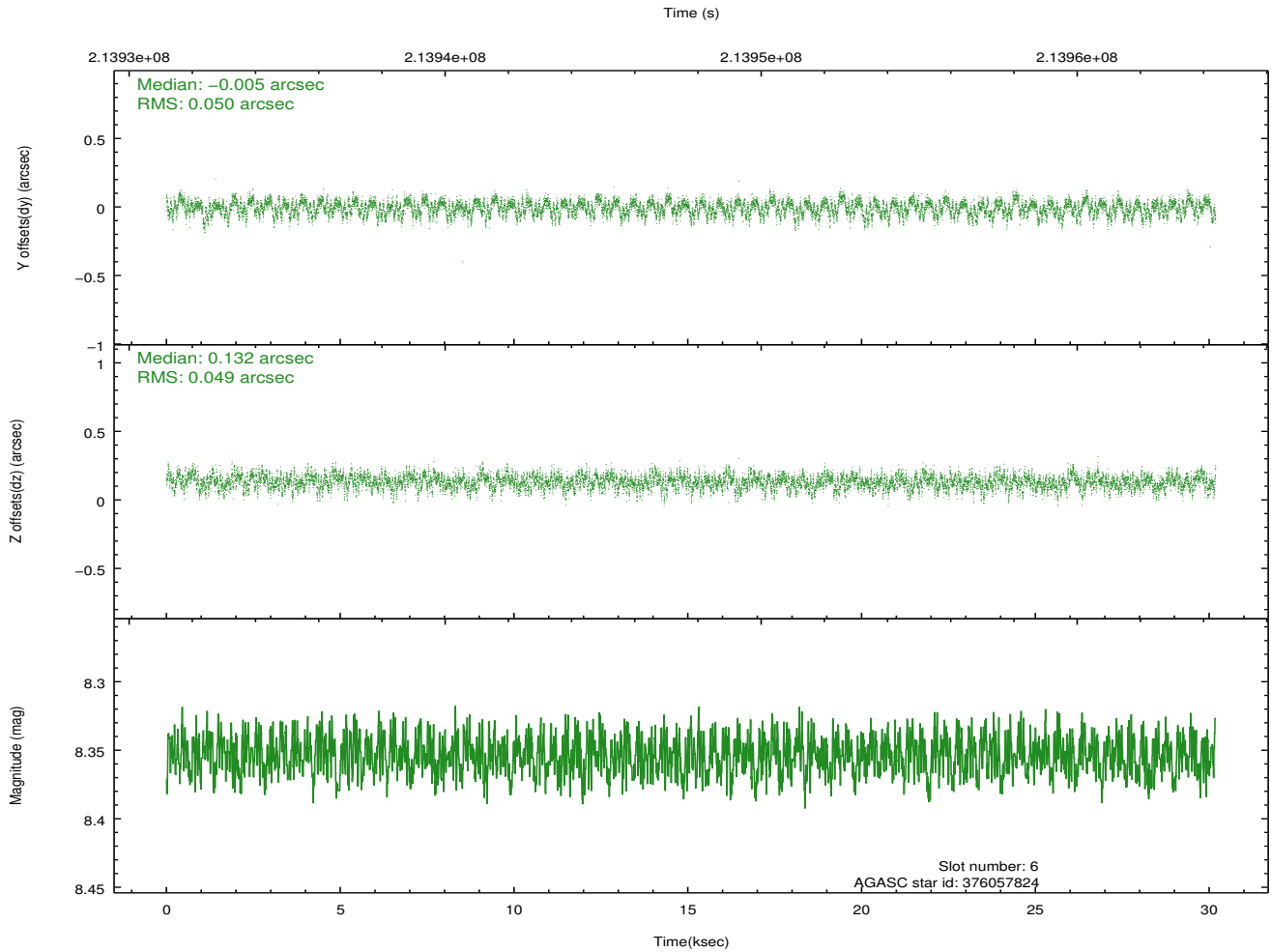
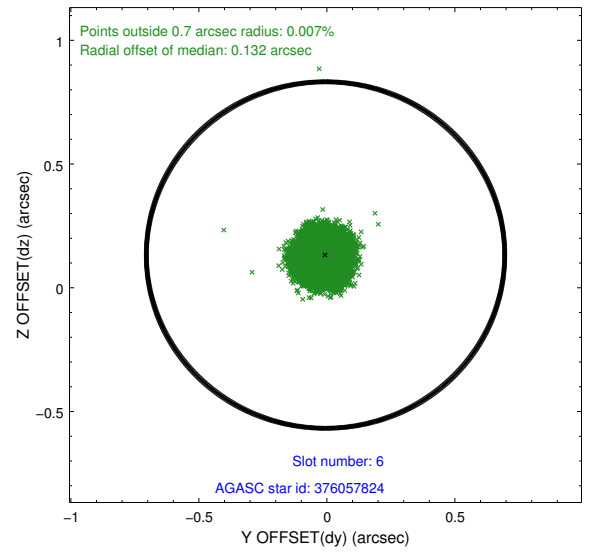
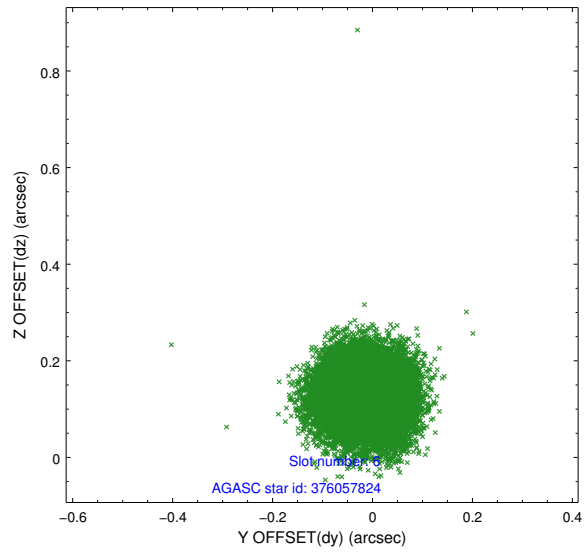
2.4.2 Slot 4



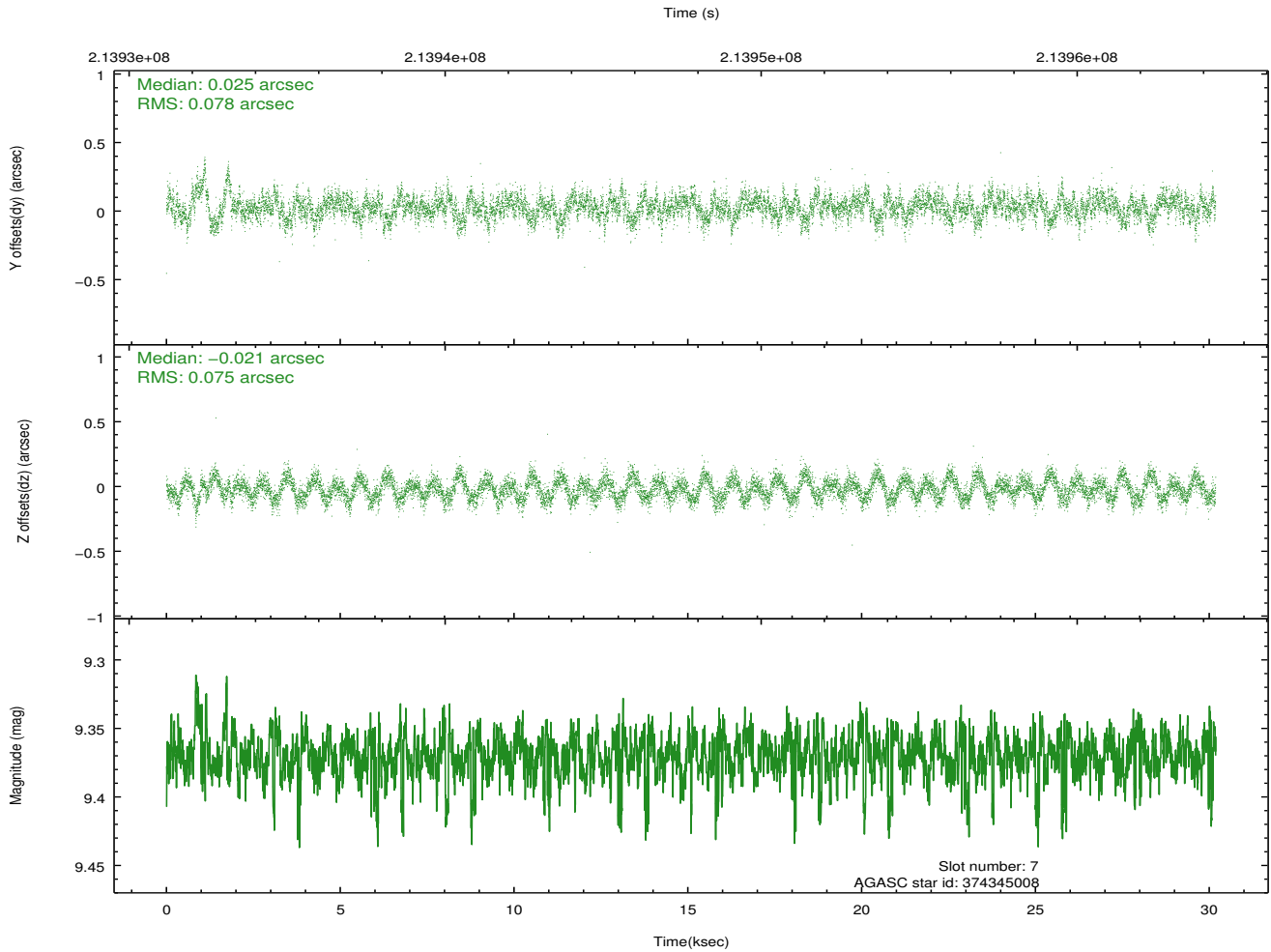
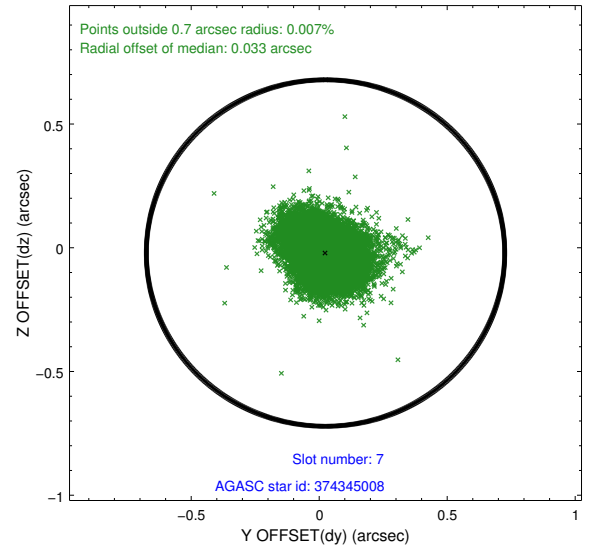
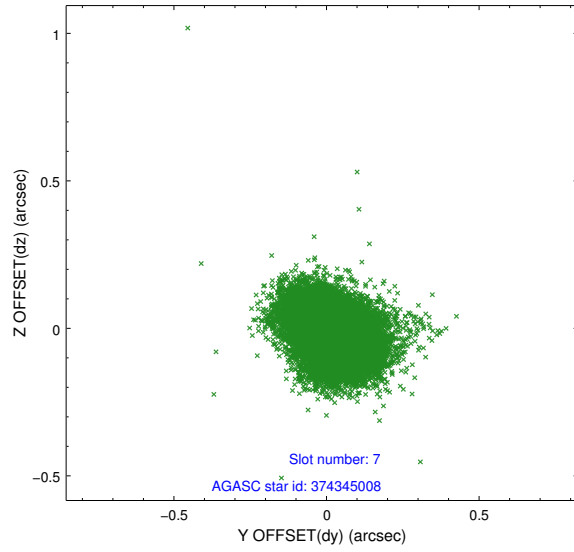
2.4.3 Slot 5



2.4.4 Slot 6

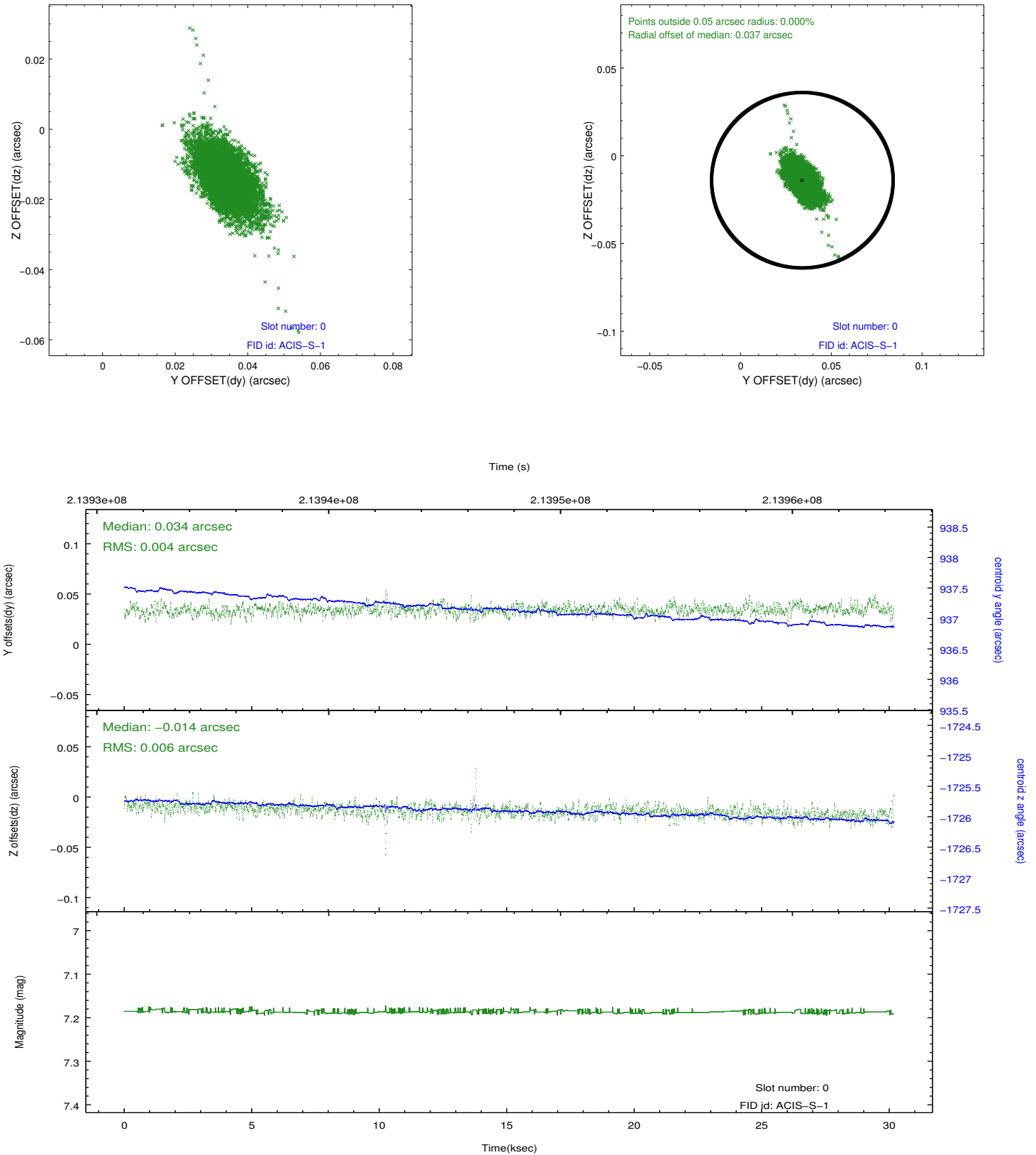


2.4.5 Slot 7

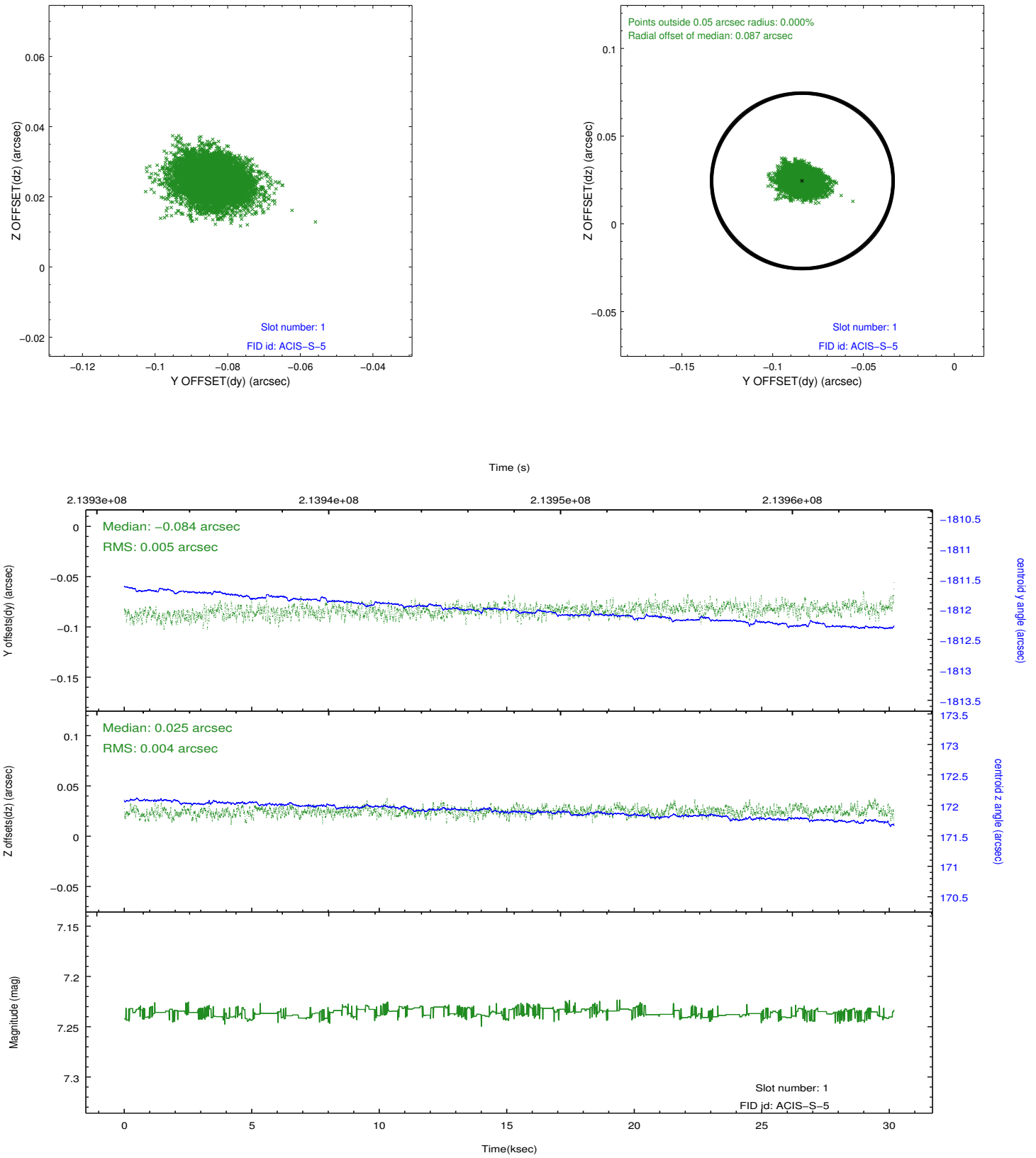


2.5 FID Slots

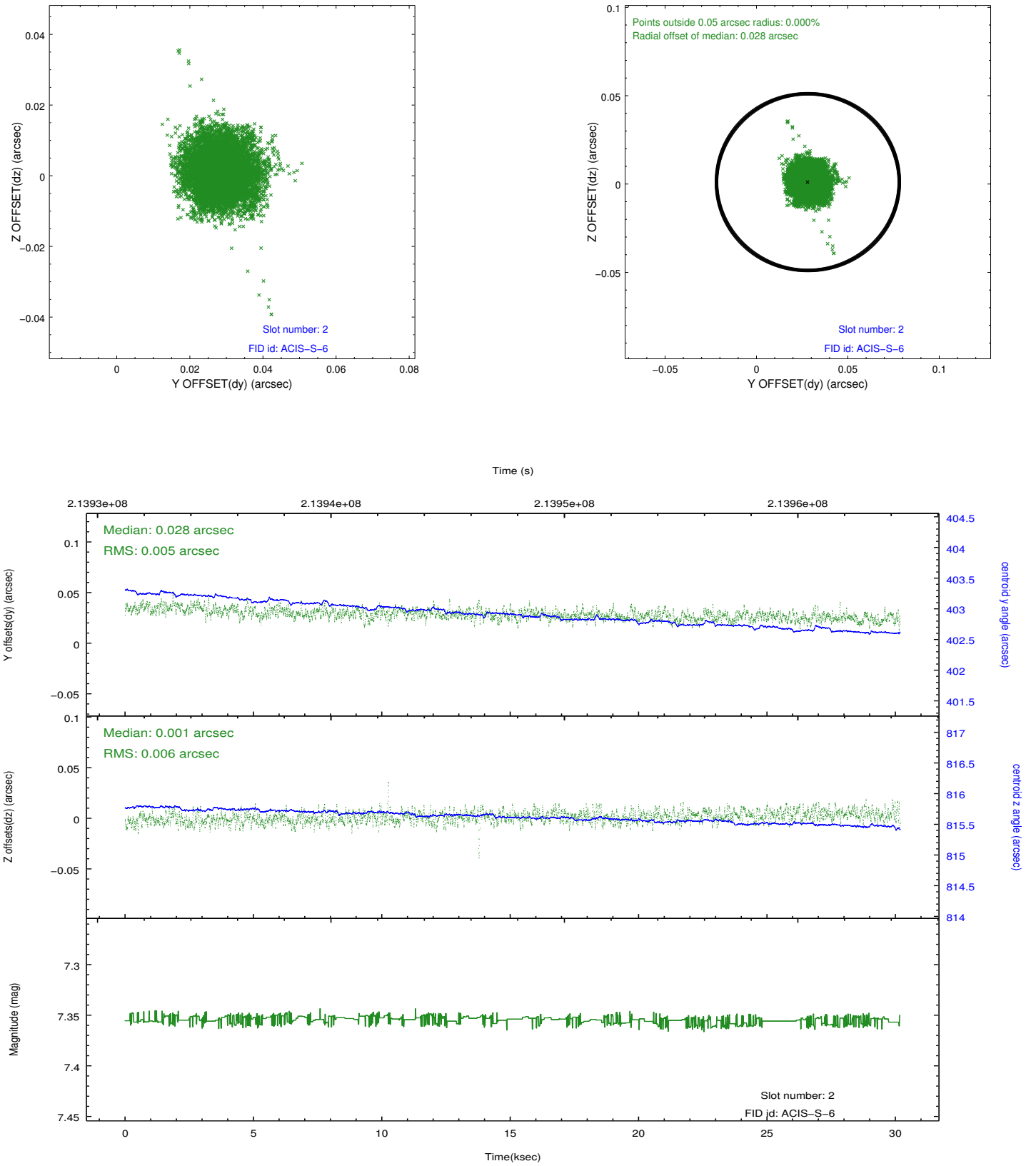
2.5.1 Slot 0



2.5.2 Slot 1



2.5.3 Slot 2



A Summary

A.1 Status

V&V Scientist	Beth Sundheim
V&V Date (YYYY-MM-DD)	2012.12.21
V&V Edition	1
V&V Disposition and Status	OK
V&V Charge Time	29.772

A.2 Comments