

V&V Reference Report

L2 ASCDS Version : 7.6.7.1

Observation 4949 - L2 Version 001
Chandra X-Ray Center

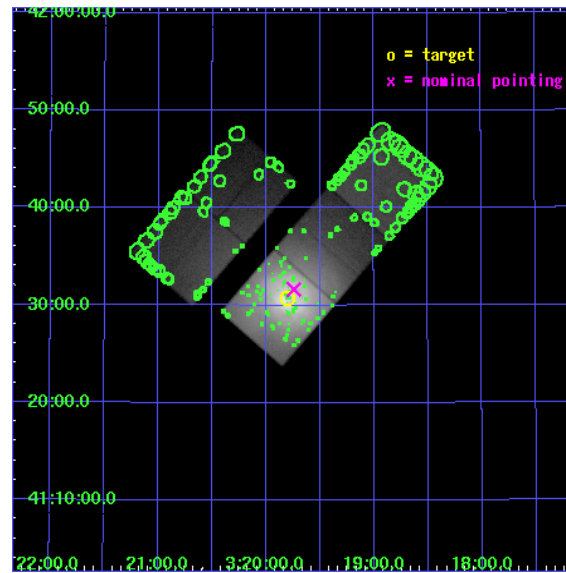
L2 Processing Date : Apr 15 2006

Contents

1	Front	2
2	OBI	3
2.1	OBI	3
2.1.1	Images	3
2.1.2	Bias	3
2.1.3	Parameters	4
2.1.4	Events	4
2.2	Compared Parameters	5
2.3	Aspect	6
2.4	Star Slots	9
2.4.1	Slot 3	9
2.4.2	Slot 4	10
2.4.3	Slot 5	11
2.4.4	Slot 6	12
2.4.5	Slot 7	13
2.5	FID Slots	14
2.5.1	Slot 0	14
2.5.2	Slot 1	15
2.5.3	Slot 2	16
3	Point Sources	17
A	Summary	18
A.1	Status	18
A.2	Comments	18

1 Front

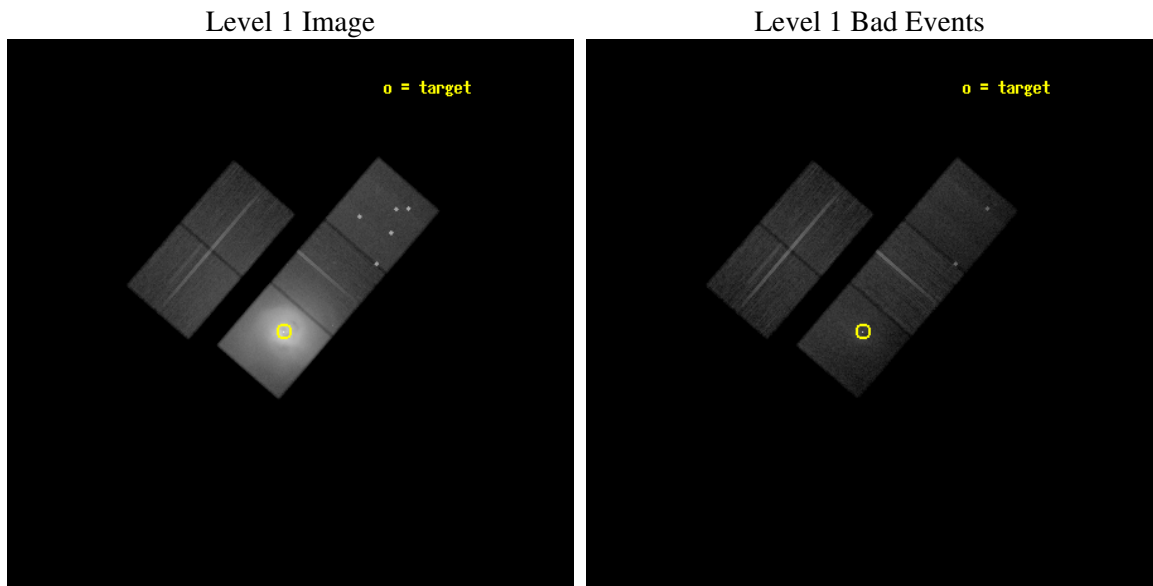
seq_num	800398
obs_id	4949
title	A Megasecond Image of the Core of the Perseus Cluster
observer	Prof Andrew Fabian
object	Abell 426
dtcycle	0
cycle	P
ra_targ	49.950833
dec_targ	41.511722
ra_nom	49.93571361269
dec_nom	41.527414461066
roll_nom	130.87066092836
revision	2
ontime	29772.399942756
livetime	29383.401619382
ontime2	29772.399942756
ontime3	29772.399942756
ontime5	29772.399942756
ontime6	29772.399942756
ontime7	29772.399942756
l2events	2907131



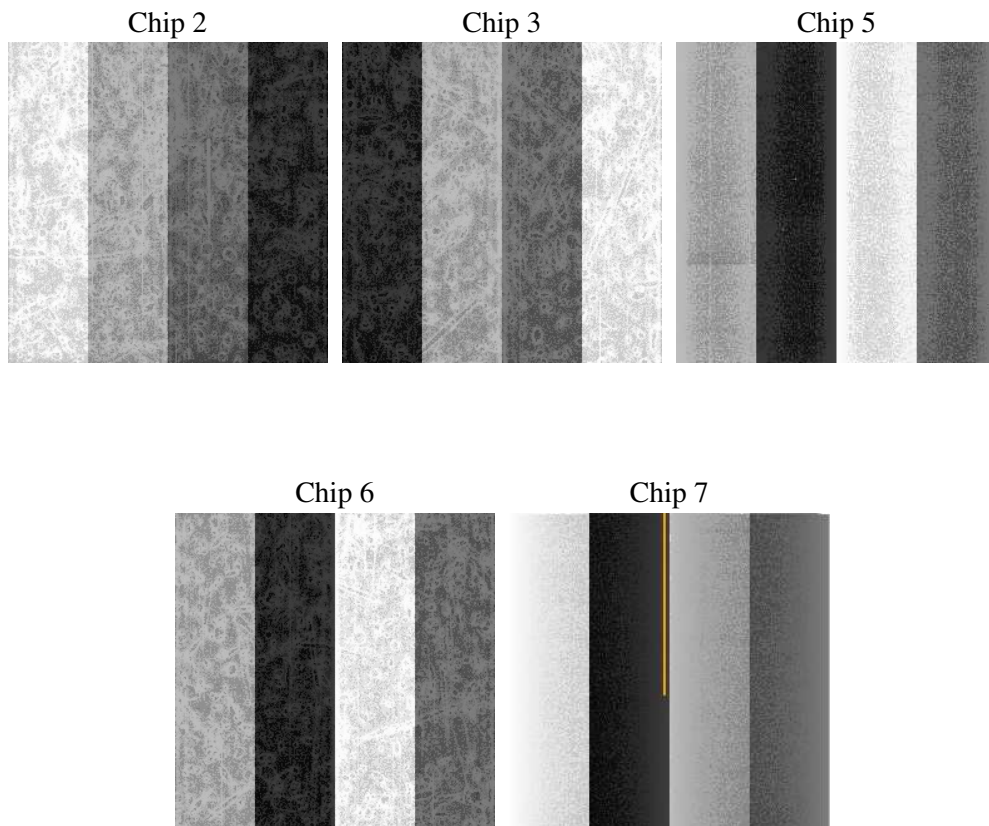
2 OBI

2.1 OBI

2.1.1 Images



2.1.2 Bias



2.1.3 Parameters

obi_num	0
ascdsver	7.6.7.1
caldbver	3.2.1
date	2006-04-15T04:13:22
revision	2

sched_exp_time	30000.000000
ontime	29776.799061328
ontime2	29776.799071223
ontime3	29776.799061328
ontime5	29776.799061328
ontime6	29776.799051434
ontime7	29776.799061328
l1events	3862201

2.1.4 Events

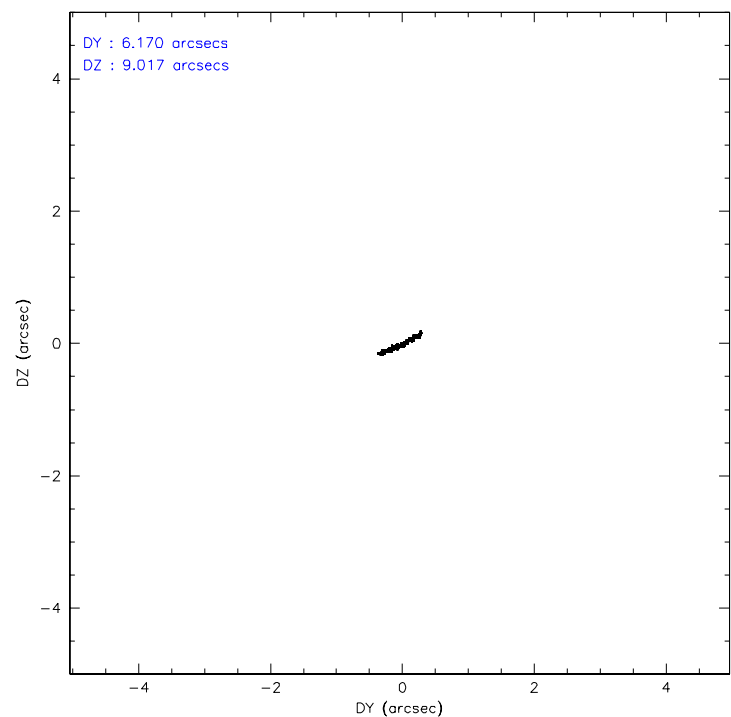
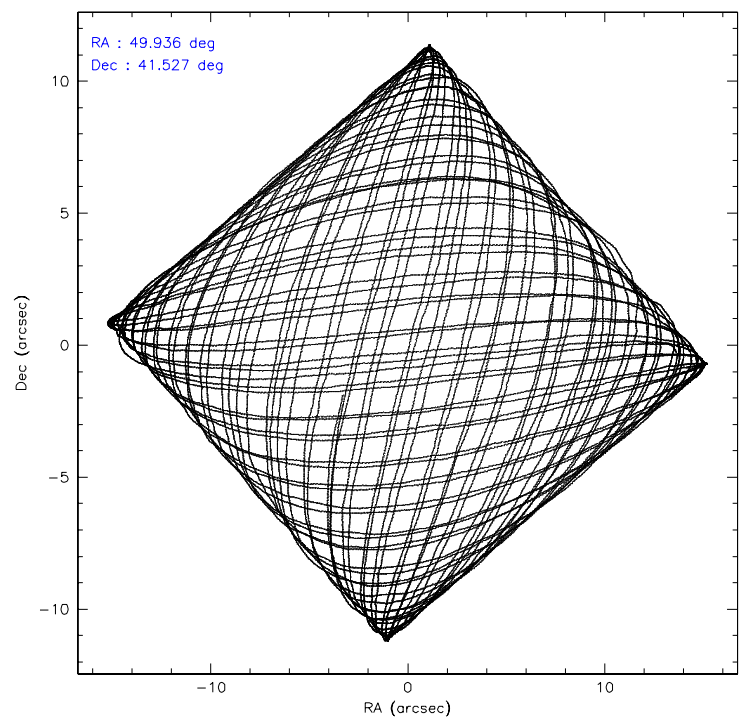
	ccd 2	ccd 3	ccd 5	ccd 6	ccd 7
level 1 events	266293	314595	344899	481282	2455132
rejected events	185126	184224	140740	186409	165554
rejected %	69%	58%	40%	38%	6%

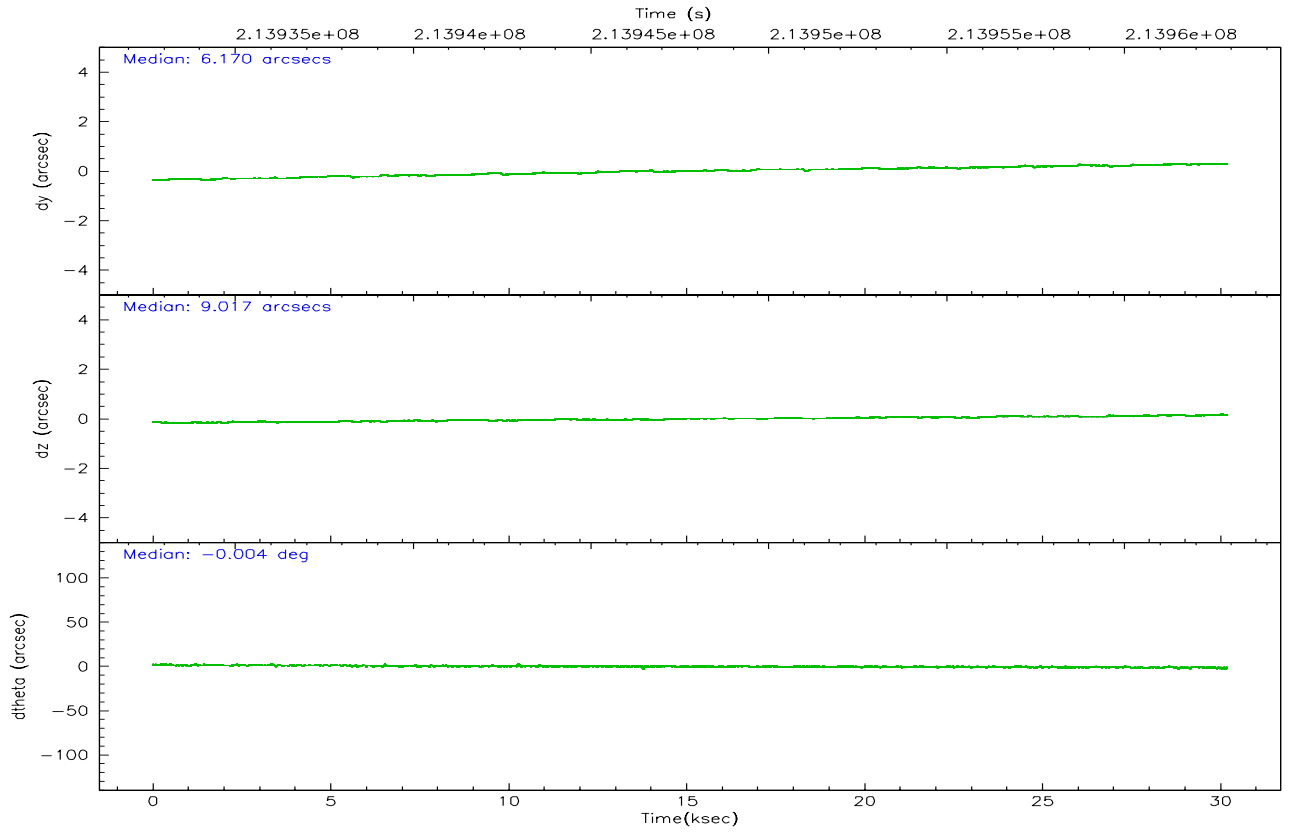
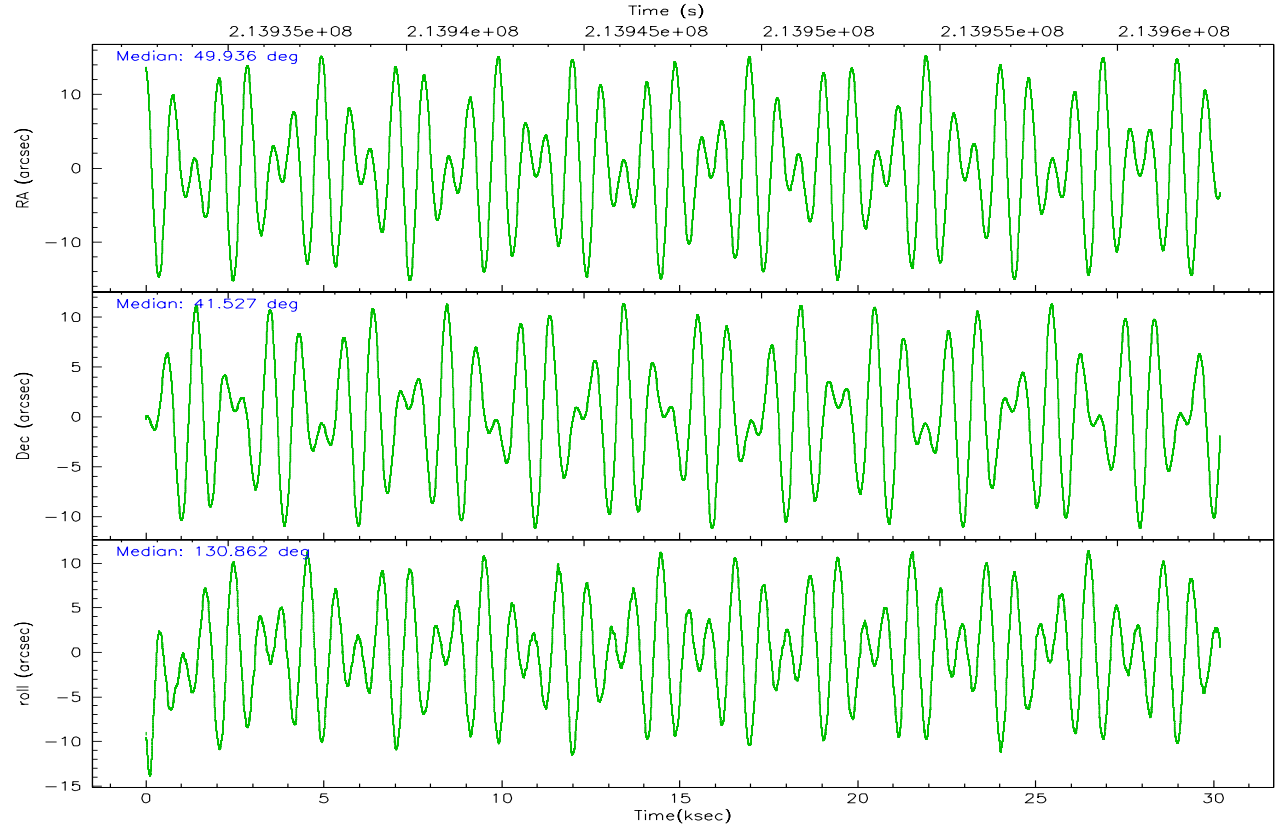
	ccd 2	ccd 3	ccd 5	ccd 6	ccd 7
grade 0 events	57501	97399	45013	228473	569088
	21%	30%	13%	47%	23%
grade 1 events	394	578	1880	1026	1441
	0%	0%	0%	0%	0%
grade 2 events	10625	15111	62018	32753	658083
	3%	4%	17%	6%	26%
grade 3 events	4096	5868	7202	10828	246590
	1%	1%	2%	2%	10%
grade 4 events	3997	5649	7067	10730	240784
	1%	1%	2%	2%	9%
grade 5 events	6579	8022	15688	8701	33496
	2%	2%	4%	1%	1%
grade 6 events	4962	6357	82878	12118	575299
	1%	2%	24%	2%	23%
grade 7 events	178139	175611	123153	176653	130351
	66%	55%	35%	36%	5%

2.2 Compared Parameters

Parameter	Planned	Actual	Parameter	Planned	Actual
Instrument	ACIS	ACIS	Obspar format version number	6	6
Detector	ACIS-23567	ACIS-23567	Obspar file type	PREDICTED	ACTUAL
Grating	NONE	NONE	Obspar update status	NONE	UPDATED
Data mode	FAINT	FAINT	On-chip summing requested	N	N
Observation mode	POINTING	POINTING	Subarray requested	NONE	NONE
Pointing RA	49.970225	49.93571361268953	Alternating exposures requested	N	N
Pointing Dec	41.518857	41.5274144610662	Primary exposure time	0.000000	3.1
Pointing Roll	130.691155	130.8706609283616			
SIM focus pos (mm)	-0.684267	-0.6828225247311905			
SIM defocus (mm)	0	0.001444936568705701			
SIM translation stage pos (mm)	-190.132523	-190.1400660498719			
SIM translation stage offset (mm)	0	0.00754346686406393			
Observation start time	213932878.184000	213932501.93553			
Observation start date	2004-10-12T01:46:54	2004-10-12T01:41:41			
Observation end time	213962878.184000	213963012.08689			
Observation end date	2004-10-12T10:06:54	2004-10-12T10:10:12			
Read mode	TIMED	TIMED			

2.3 Aspect



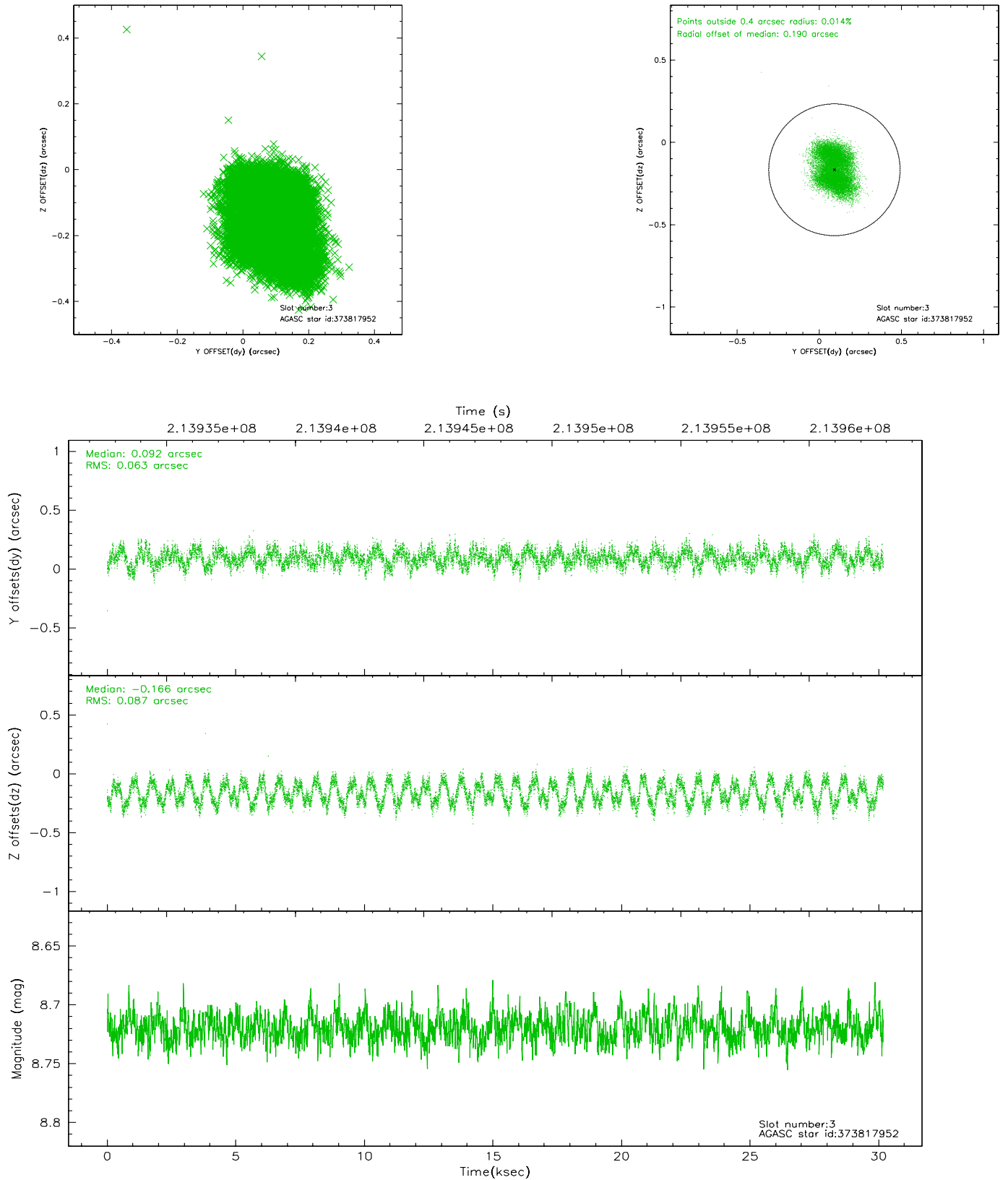


Slot Statistics

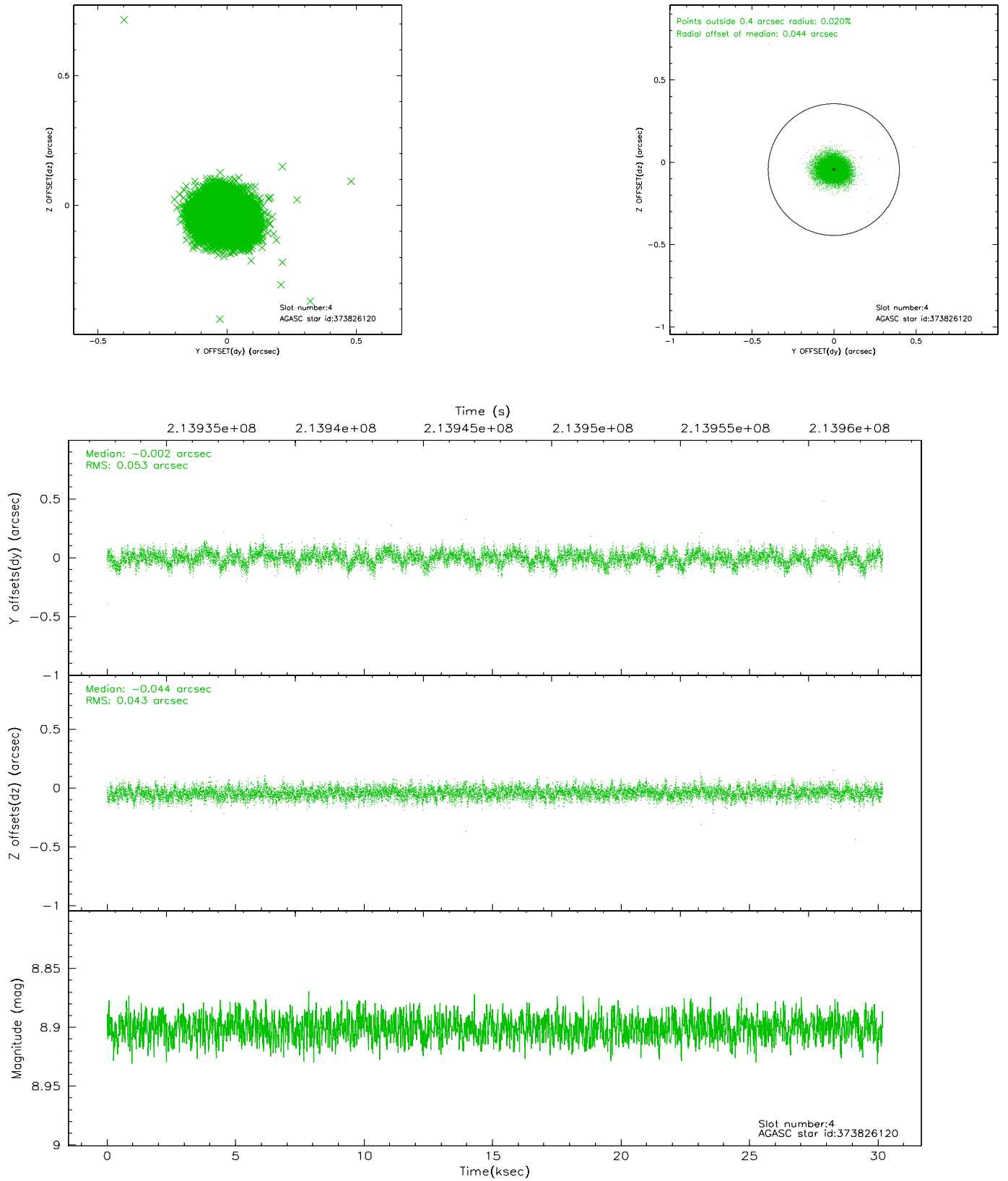
slot	status	id	mag	n_pts	med_dy	med_dz	dr1	dr2	ra	dec	mean_y	mean_z
0	FID	ACIS-S-1	7.19	7363	0.014	0.013	0.007	0.013	0.000000	0.000000	937.13	-1725.86
1	FID	ACIS-S-5	7.24	7363	-0.053	0.017	0.006	0.011	0.000000	0.000000	-1811.86	171.67
2	FID	ACIS-S-6	7.35	7362	0.018	-0.018	0.008	0.013	0.000000	0.000000	402.66	815.64
3	GUIDE	373817952	8.72	14724	0.092	-0.166	0.118	0.174	49.913424	40.978510	-1374.21	1385.09
4	GUIDE	373826120	8.90	14711	-0.002	-0.044	0.072	0.118	49.738165	41.186341	-497.14	1256.73
5	GUIDE	374352808	8.78	14719	-0.103	0.096	0.080	0.131	49.969955	42.208621	1883.61	-1617.87
6	GUIDE	376057824	8.35	14724	-0.005	0.132	0.076	0.119	50.665569	41.926280	-95.95	-2373.16
7	GUIDE	374345008	9.37	14648	0.025	-0.021	0.114	0.186	48.768668	41.619367	2399.39	2201.68

2.4 Star Slots

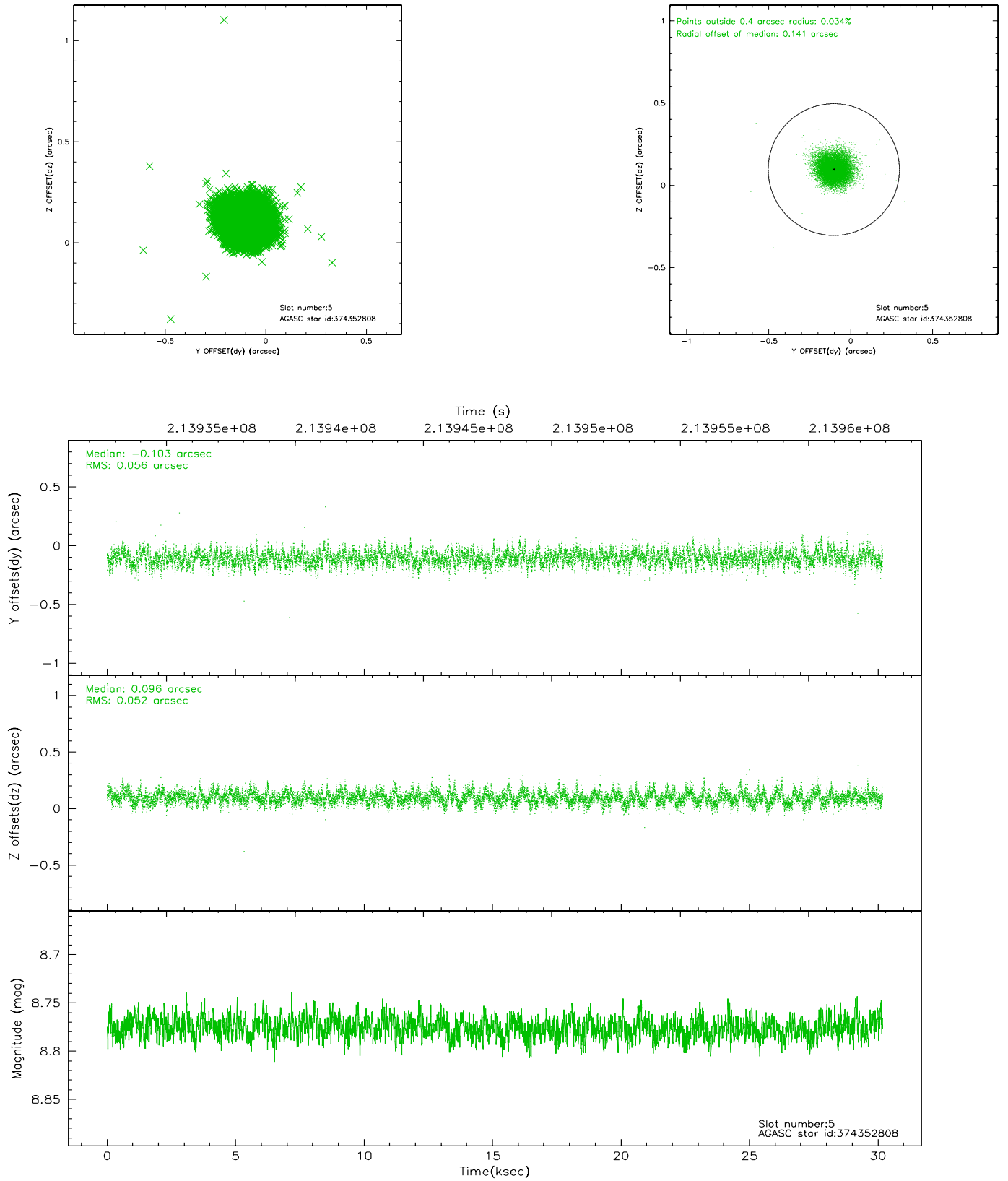
2.4.1 Slot 3



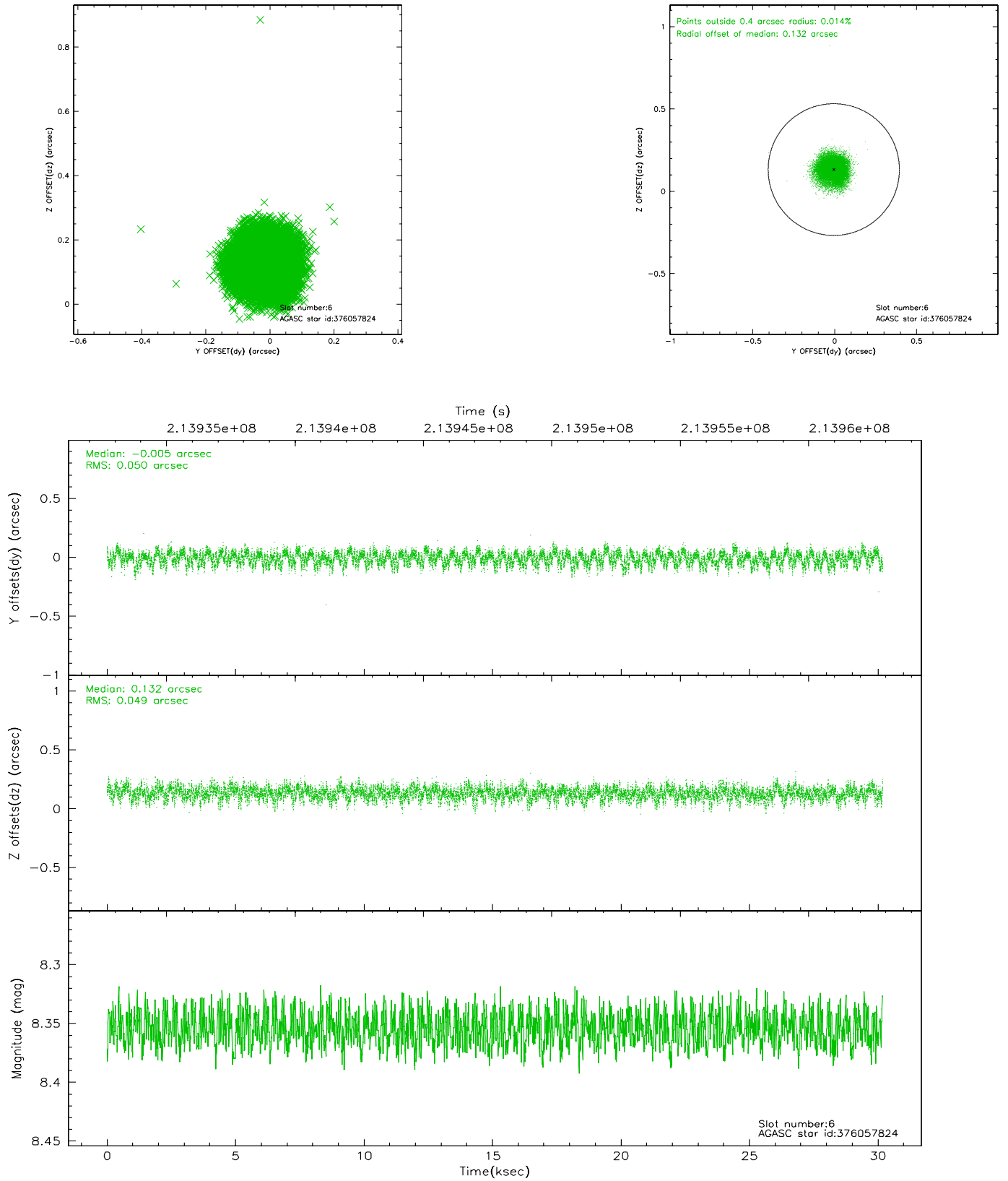
2.4.2 Slot 4



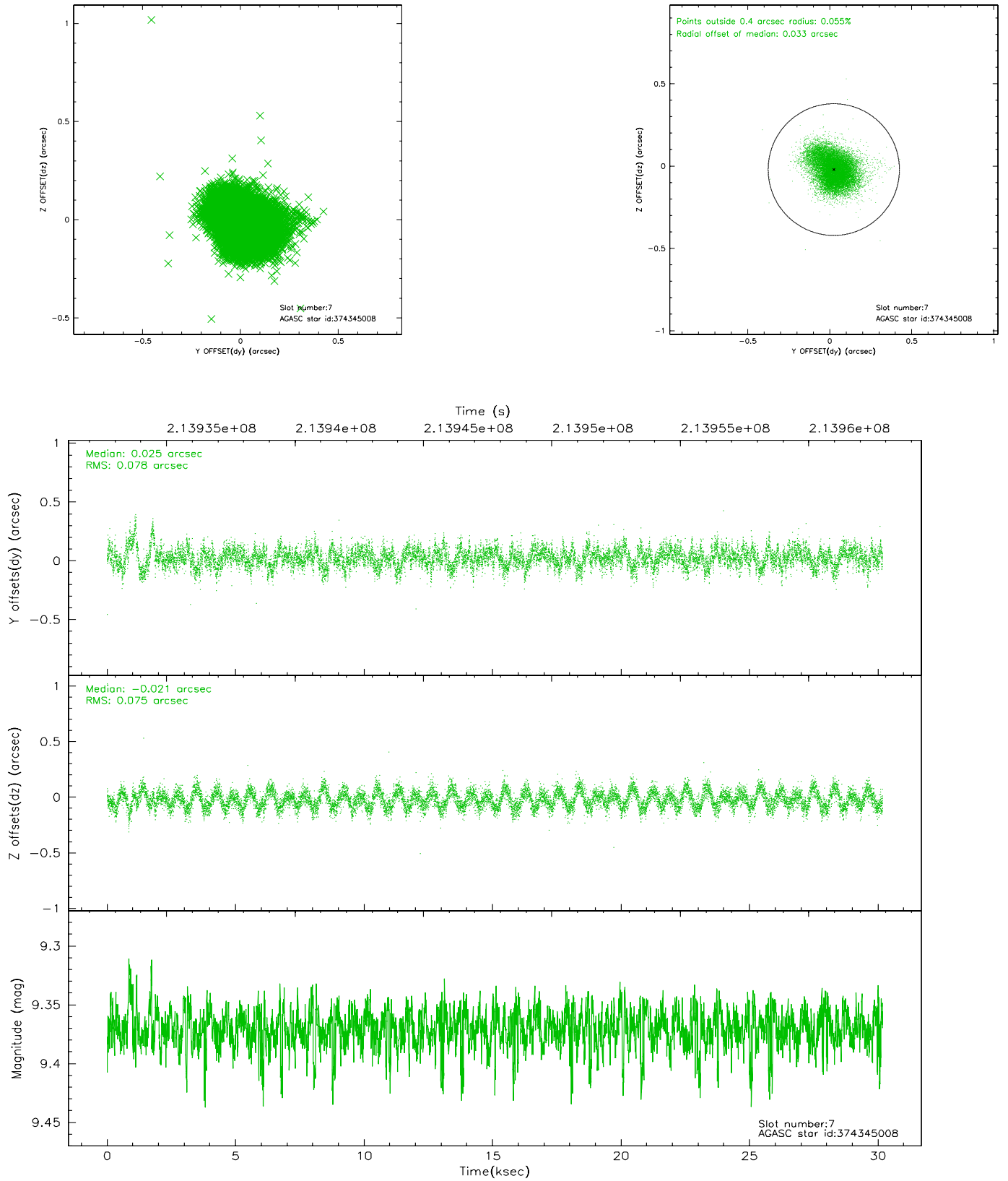
2.4.3 Slot 5



2.4.4 Slot 6

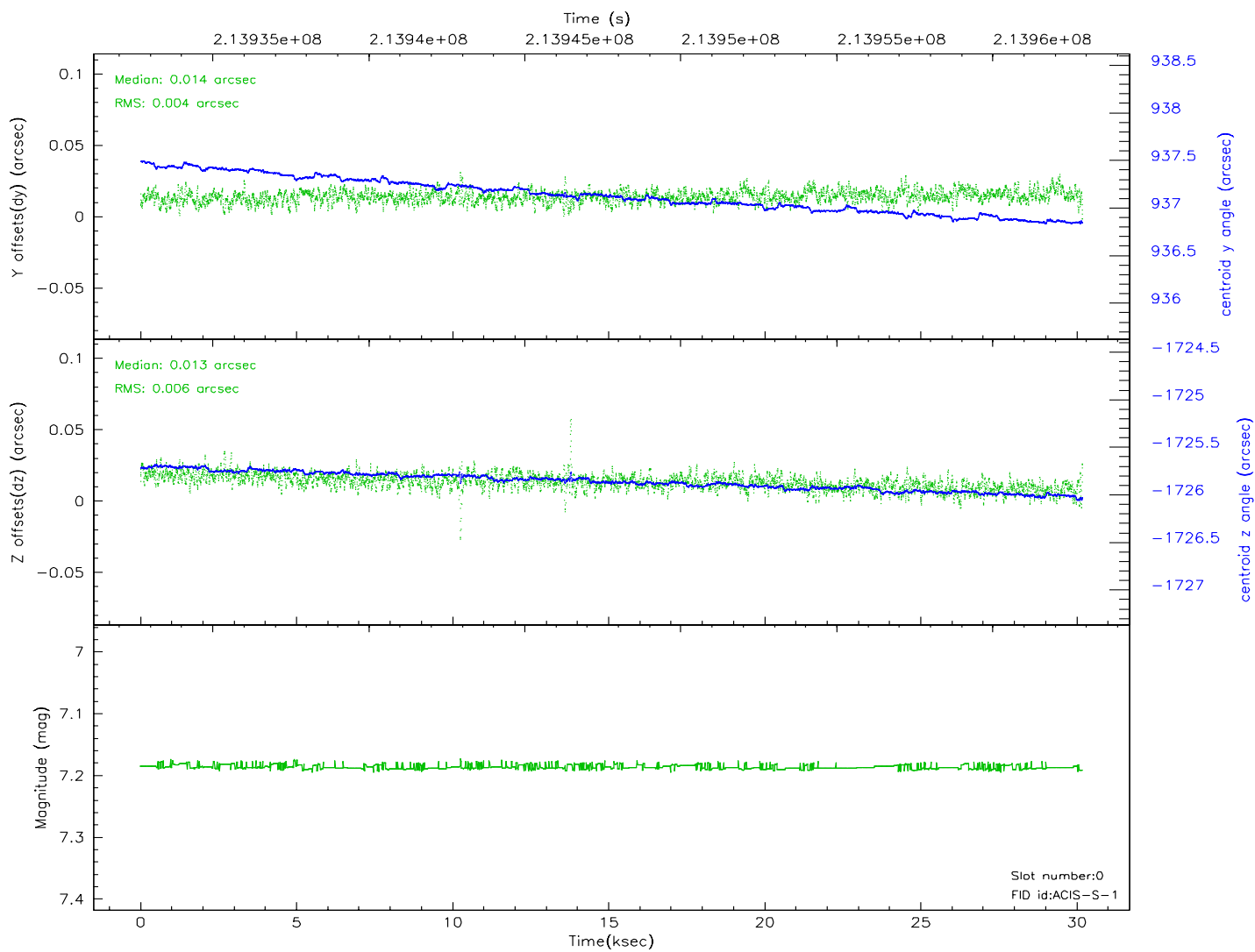
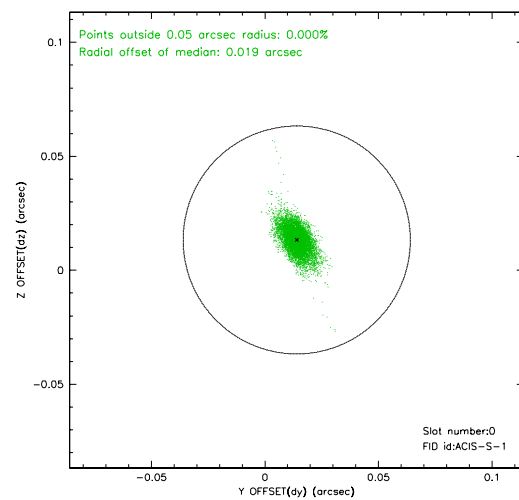
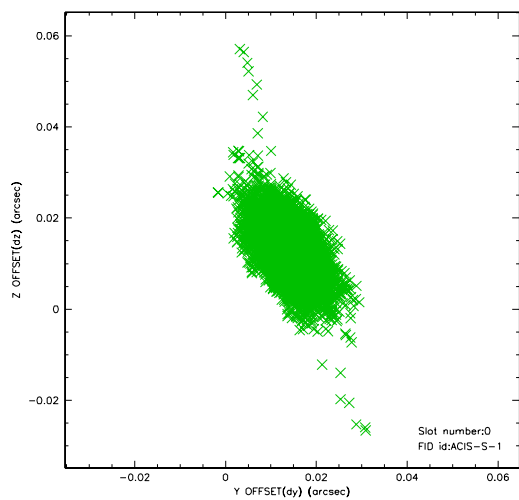


2.4.5 Slot 7

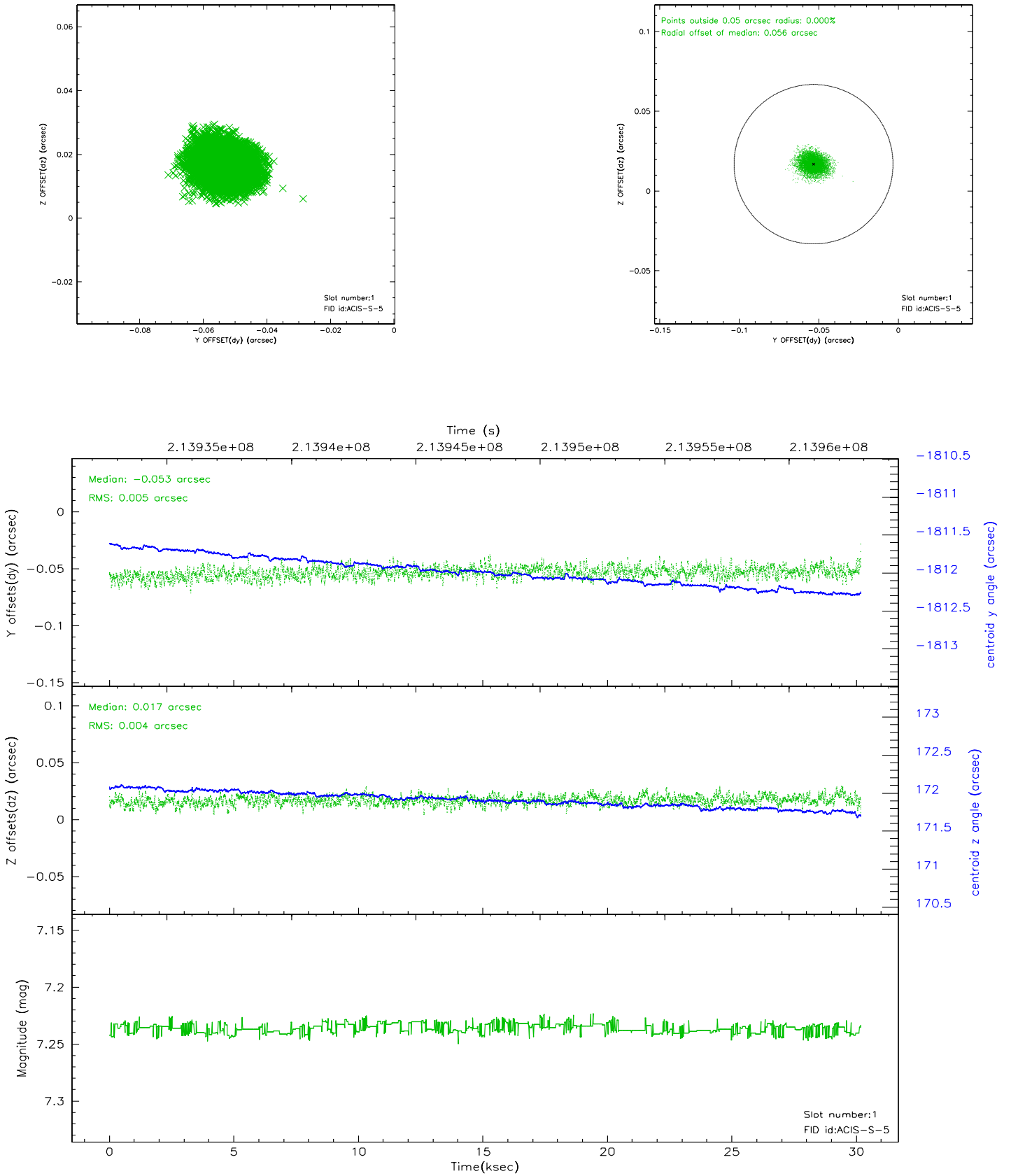


2.5 FID Slots

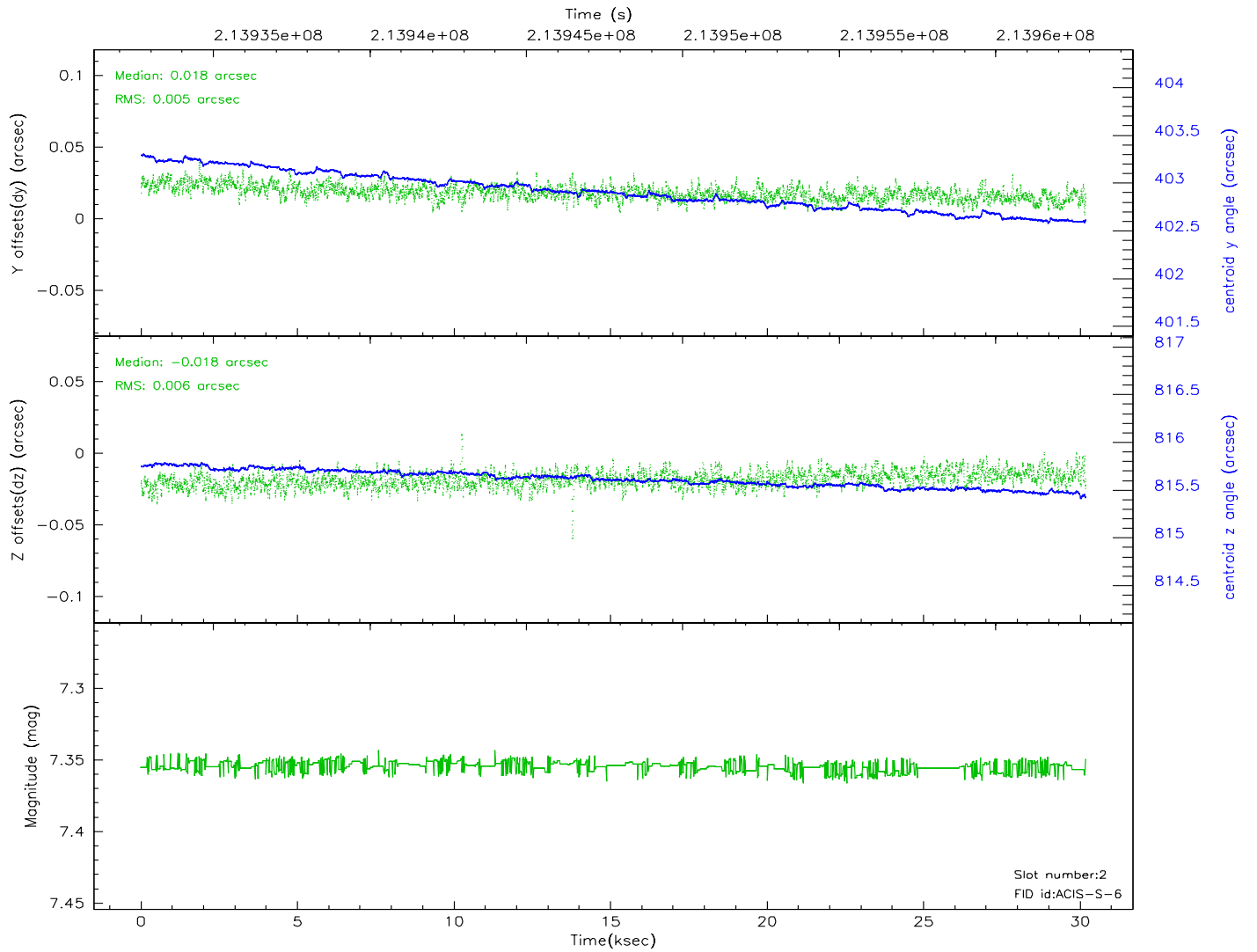
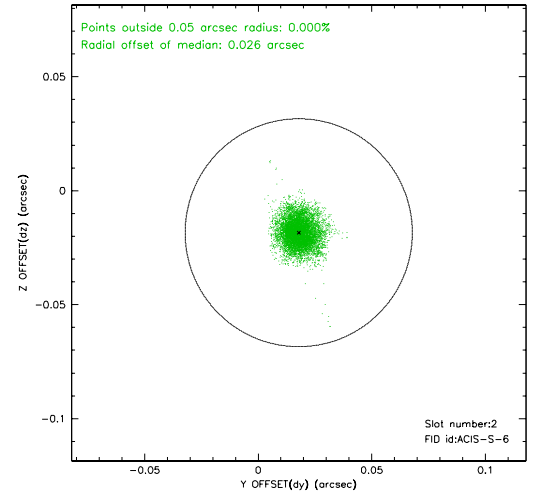
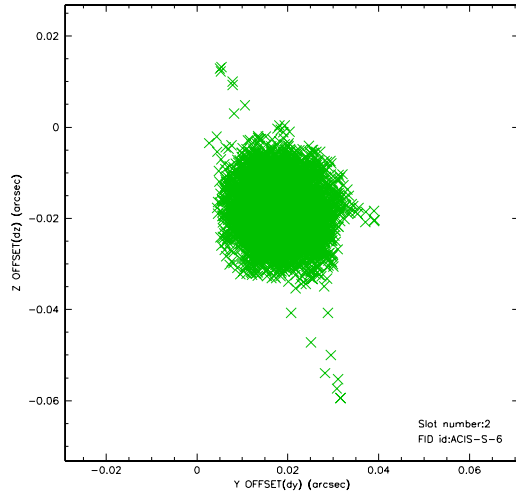
2.5.1 Slot 0



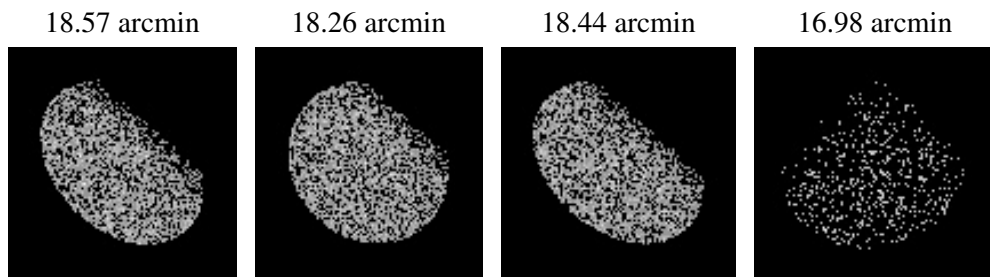
2.5.2 Slot 1



2.5.3 Slot 2



3 Point Sources



A Summary

A.1 Status

V&V Scientist	Beth Sundheim
V&V Date (YYYY-MM-DD)	2006.04.16
V&V Edition	1
V&V Disposition and Status	OK
V&V Charge Time	29.772

A.2 Comments