

# V&V Reference Report

## L2 ASCDS Version : 7.6.7.1

Observation 4947 - L2 Version 001  
Chandra X-Ray Center

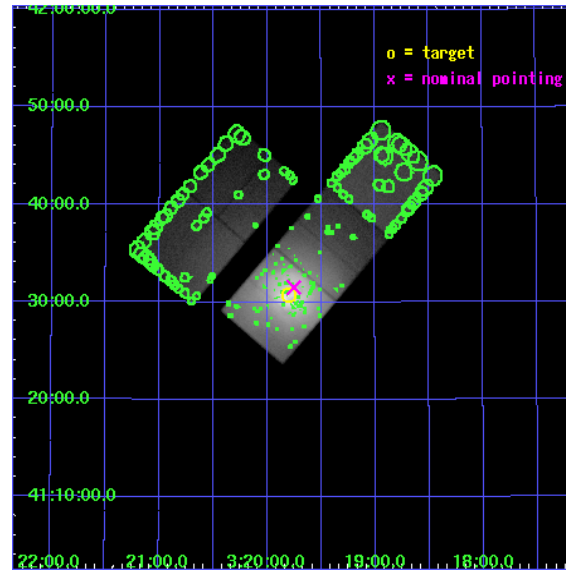
L2 Processing Date : Apr 15 2006

## Contents

<b>1</b>	<b>Front</b>	<b>2</b>
<b>2</b>	<b>OBI</b>	<b>3</b>
2.1	OBI . . . . .	3
2.1.1	Images . . . . .	3
2.1.2	Bias . . . . .	3
2.1.3	Parameters . . . . .	4
2.1.4	Events . . . . .	4
2.2	Compared Parameters . . . . .	5
2.3	Aspect . . . . .	6
2.4	Star Slots . . . . .	9
2.4.1	Slot 3 . . . . .	9
2.4.2	Slot 4 . . . . .	10
2.4.3	Slot 5 . . . . .	11
2.4.4	Slot 6 . . . . .	12
2.4.5	Slot 7 . . . . .	13
2.5	FID Slots . . . . .	14
2.5.1	Slot 0 . . . . .	14
2.5.2	Slot 1 . . . . .	15
2.5.3	Slot 2 . . . . .	16
<b>3</b>	<b>Point Sources</b>	<b>17</b>
<b>A</b>	<b>Summary</b>	<b>18</b>
A.1	Status . . . . .	18
A.2	Comments . . . . .	18

# 1 Front

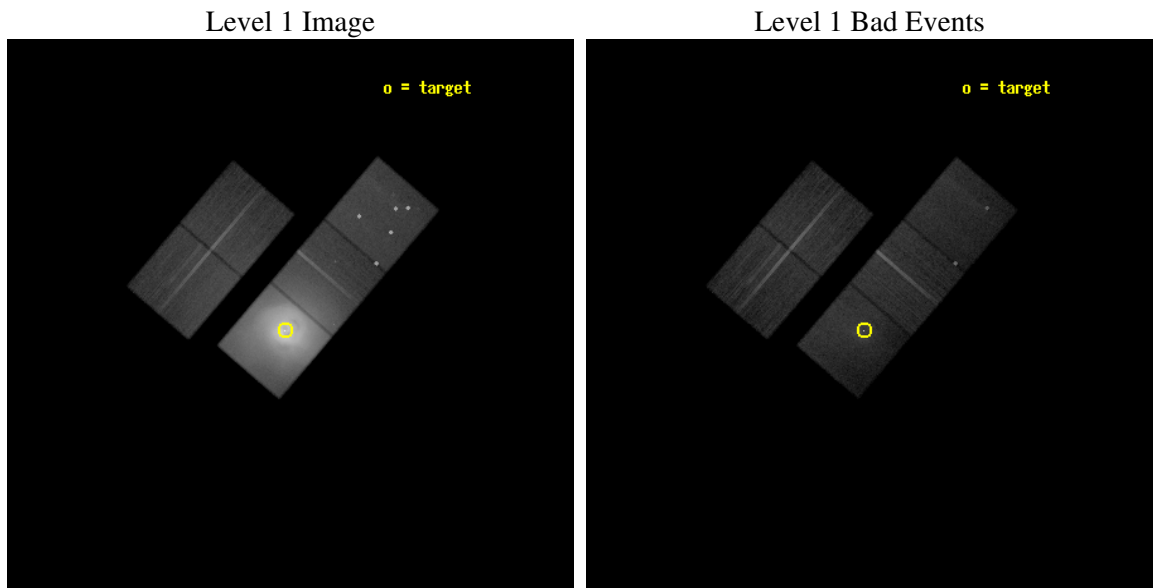
seq_num	800397
obs_id	4947
title	A Megasecond Image of the Core of the Perseus Cluster
observer	Prof Andrew Fabian
object	Abell 426
dtcycle	0
cycle	P
ra_targ	49.950833
dec_targ	41.511722
ra_nom	49.938214837725
dec_nom	41.525370293988
roll_nom	130.60792069485
revision	2
ontime	30181.599941969
livetime	29787.255119356
ontime2	30181.599941969
ontime3	30181.599941969
ontime5	30181.599941969
ontime6	30181.599941969
ontime7	30181.599941969
l2events	2953897



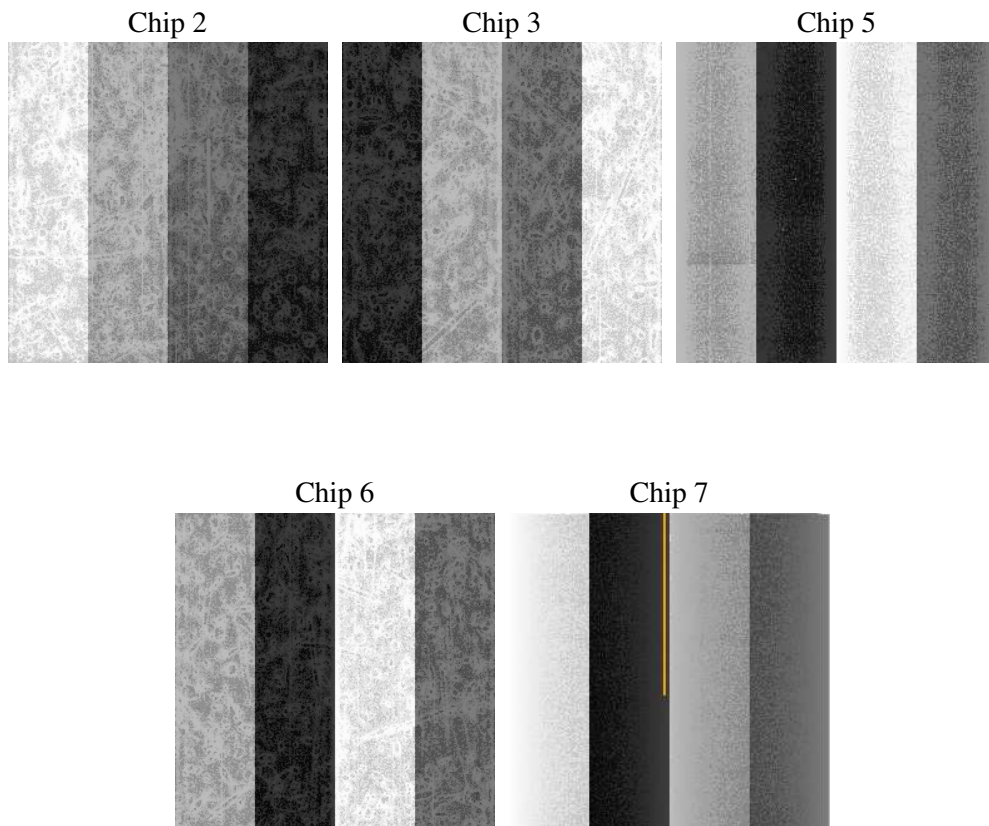
## 2 OBI

### 2.1 OBI

#### 2.1.1 Images



#### 2.1.2 Bias



### 2.1.3 Parameters

obi_num	0
ascdsver	7.6.7.1
caldbver	3.2.1
date	2006-04-15T04:02:36
revision	2

sched_exp_time	30000.000000
ontime	31325.312950879
ontime2	31325.312950879
ontime3	31325.312950879
ontime5	31325.312970757
ontime6	31325.312950879
ontime7	31325.312950879
l1events	3985276

### 2.1.4 Events

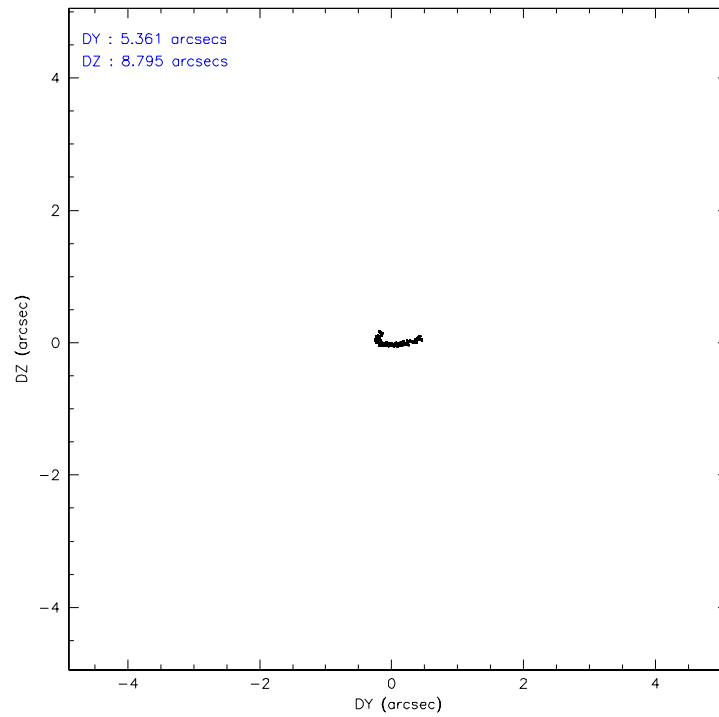
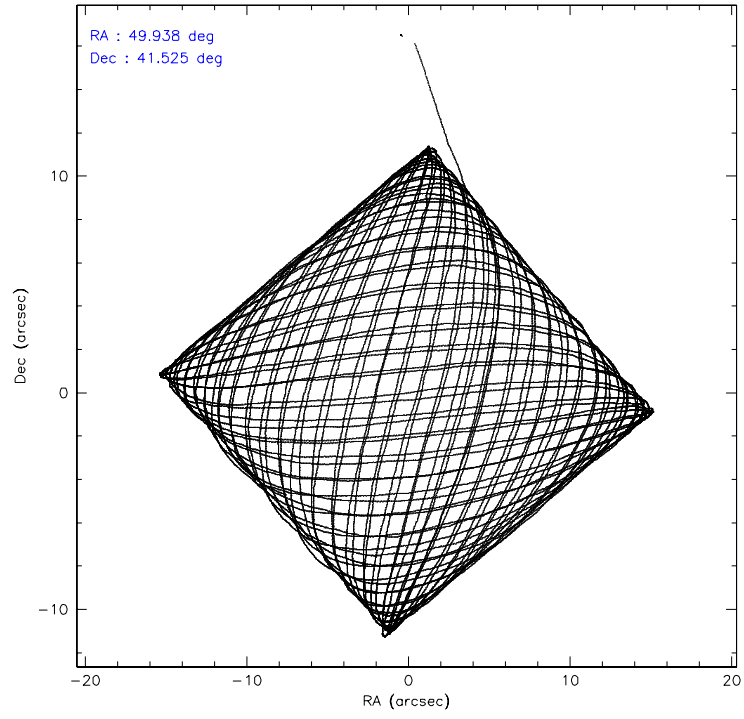
	ccd 2	ccd 3	ccd 5	ccd 6	ccd 7
level 1 events	288197	326451	364994	511913	2493721
rejected events	204024	193360	155653	198093	185253
rejected %	70%	59%	42%	38%	7%

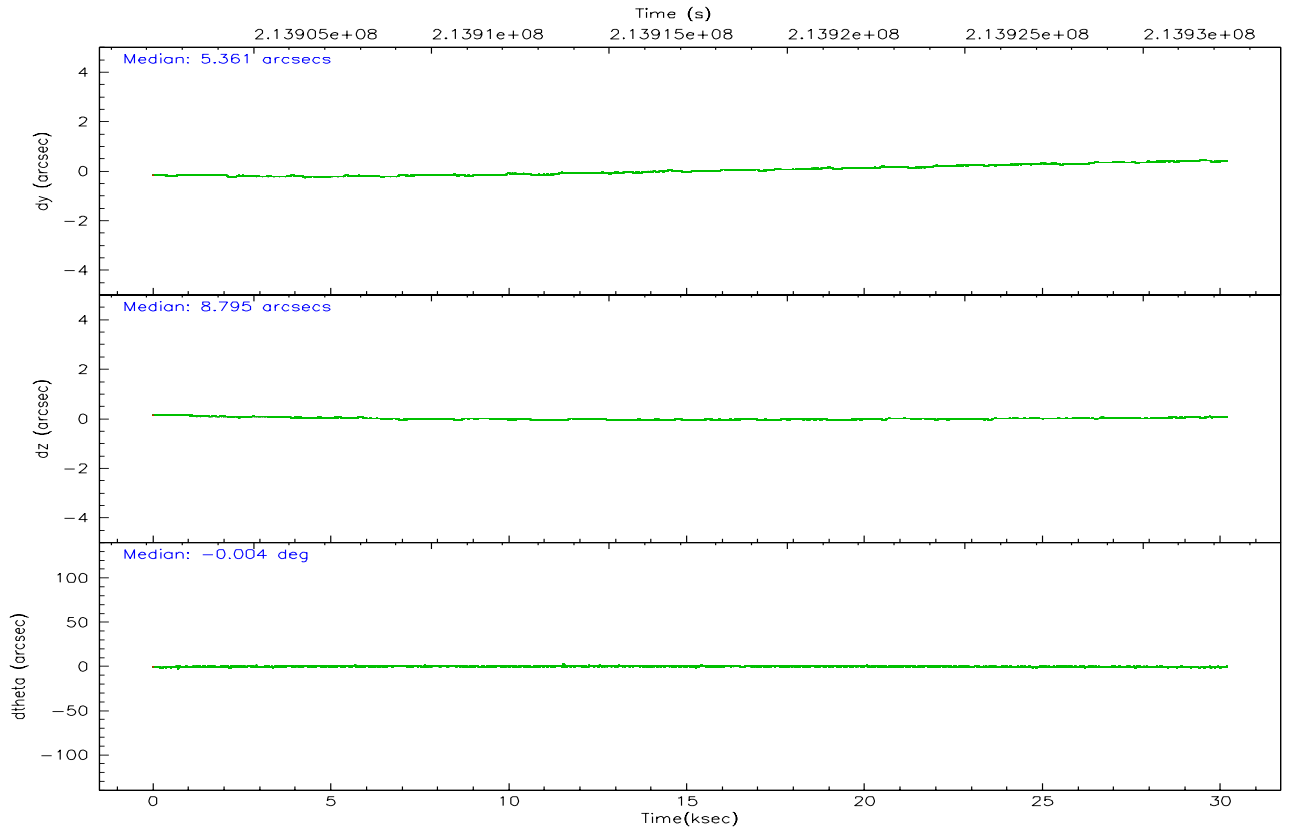
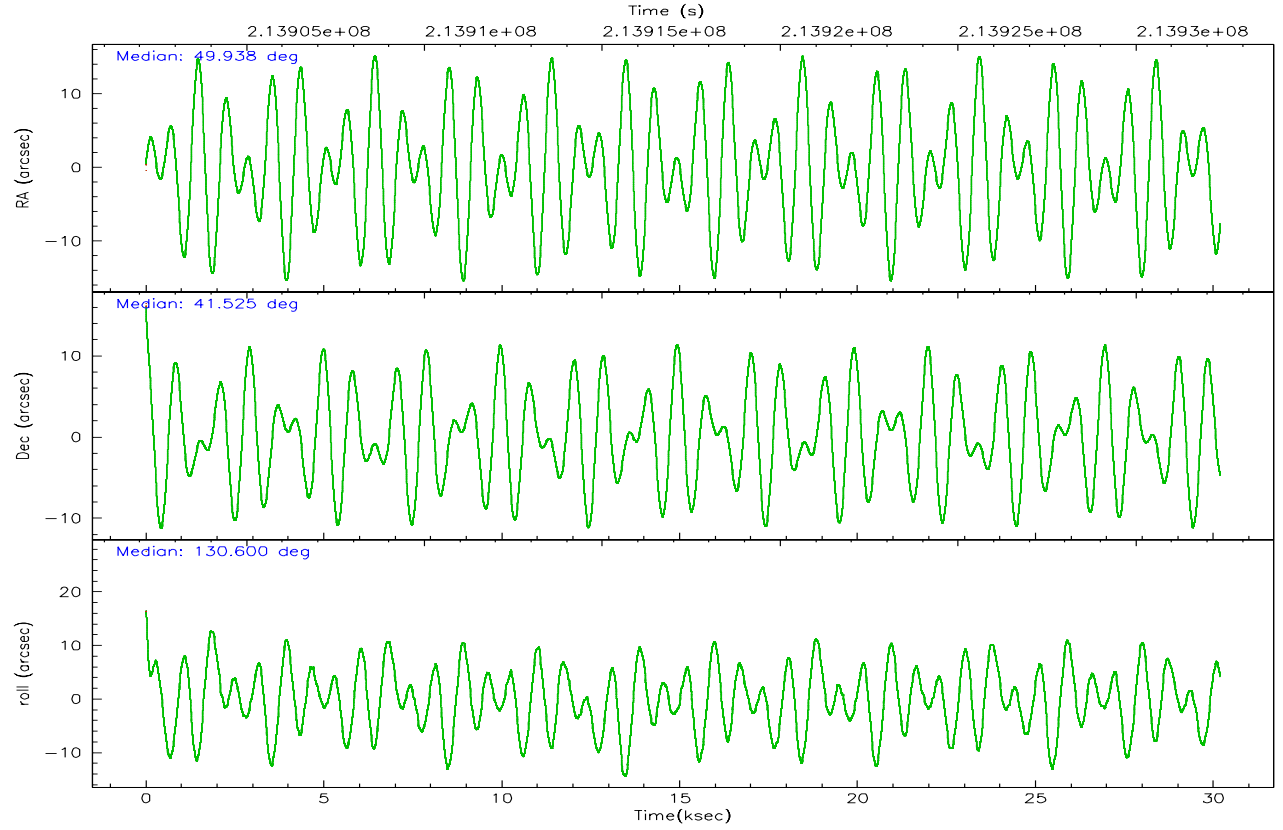
	ccd 2	ccd 3	ccd 5	ccd 6	ccd 7
grade 0 events	60636	100227	45268	246813	572691
	21%	30%	12%	48%	22%
grade 1 events	363	561	1285	1028	1440
	0%	0%	0%	0%	0%
grade 2 events	10914	15736	66815	34946	667632
	3%	4%	18%	6%	26%
grade 3 events	4206	5896	7622	11577	249892
	1%	1%	2%	2%	10%
grade 4 events	4355	5899	7657	11650	245321
	1%	1%	2%	2%	9%
grade 5 events	6885	8260	16857	9101	34229
	2%	2%	4%	1%	1%
grade 6 events	5282	6607	89215	13040	586984
	1%	2%	24%	2%	23%
grade 7 events	195556	183265	130275	183758	135532
	67%	56%	35%	35%	5%

## 2.2 Compared Parameters

Parameter	Planned	Actual	Parameter	Planned	Actual
Instrument	ACIS	ACIS	Obspar format version number	6	6
Detector	ACIS-23567	ACIS-23567	Obspar file type	PREDICTED	ACTUAL
Grating	NONE	NONE	Obspar update status	NONE	UPDATED
Data mode	FAINT	FAINT	On-chip summing requested	N	N
Observation mode	POINTING	POINTING	Subarray requested	NONE	NONE
Pointing RA	49.972677	49.93821483772503	Alternating exposures requested	N	N
Pointing Dec	41.516686	41.52537029398782	Primary exposure time	0.000000	3.1
Pointing Roll	130.428440	130.6079206948489			
SIM focus pos (mm)	-0.684267	-0.6828225247311905			
SIM defocus (mm)	0	0.001444936568705701			
SIM translation stage pos (mm)	-190.132523	-190.1400660498719			
SIM translation stage offset (mm)	0	0.00754346686406393			
Observation start time	213902368.184000	213900797.65911			
Observation start date	2004-10-11T17:18:24	2004-10-11T16:53:17			
Observation end time	213932368.184000	213932501.93553			
Observation end date	2004-10-12T01:38:24	2004-10-12T01:41:41			
Read mode	TIMED	TIMED			

## 2.3 Aspect





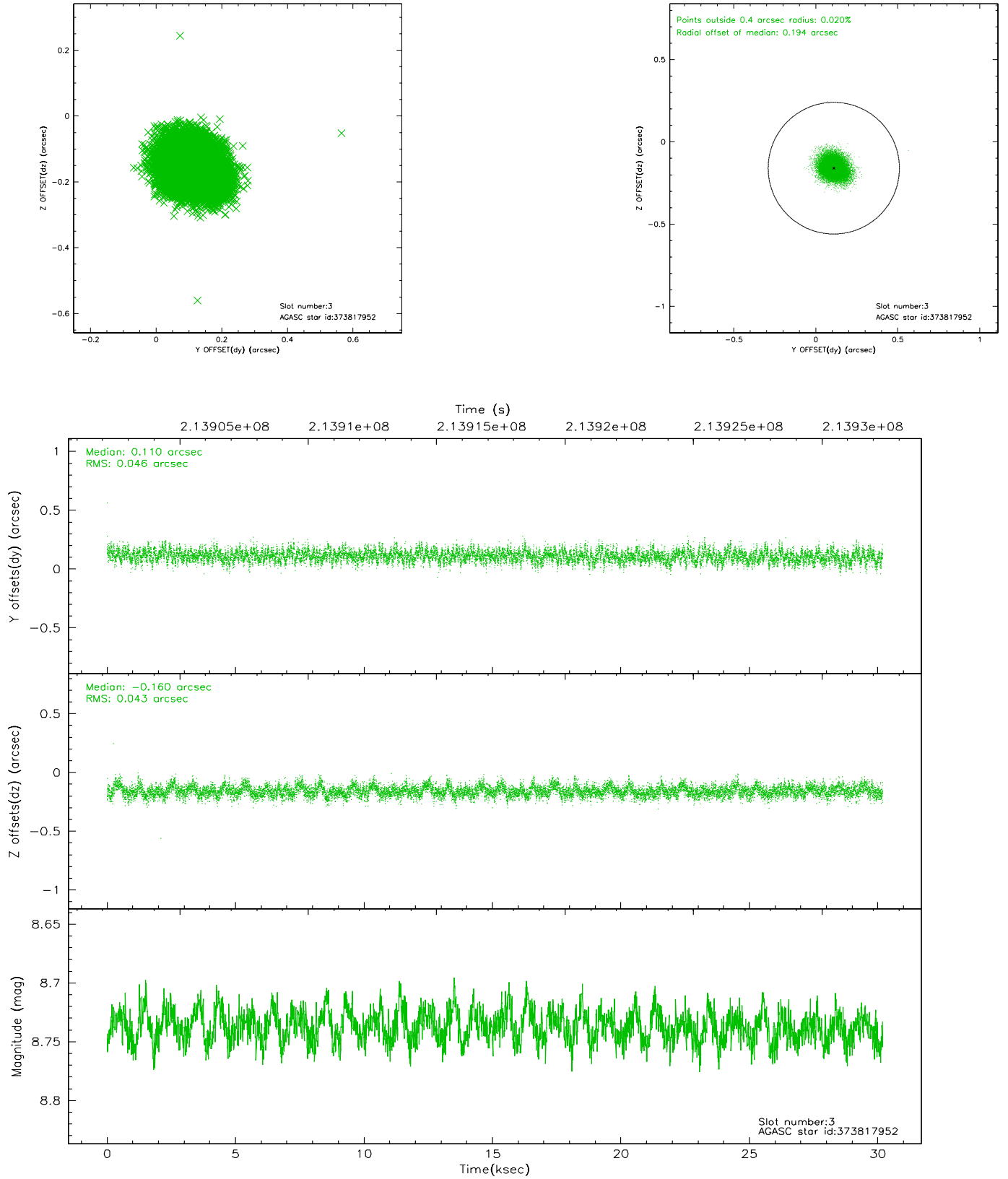
### Slot Statistics

slot	status	id	mag	n_pts	med_dy	med_dz	dr1	dr2	ra	dec	mean_y	mean_z
0	FID	ACIS-S-1	7.18	7364	0.009	0.026	0.007	0.013	0.000000	0.000000	937.89	-1725.65
1	FID	ACIS-S-5	7.24	7362	-0.062	0.011	0.007	0.012	0.000000	0.000000	-1811.08	171.90
2	FID	ACIS-S-6	7.36	7364	0.032	-0.025	0.009	0.014	0.000000	0.000000	403.47	815.84
3	GUIDE	373817952	8.74	14723	0.110	-0.160	0.067	0.110	49.913424	40.978510	-1370.31	1378.77
4	GUIDE	373826120	8.90	14727	0.021	-0.069	0.074	0.116	49.738165	41.186341	-492.65	1254.38
5	GUIDE	374357808	8.68	14715	-0.165	0.087	0.065	0.108	49.921429	42.176083	1895.83	-1434.91
6	GUIDE	374345008	9.38	14715	0.002	-0.025	0.093	0.152	48.768668	41.619367	2399.65	2212.56
7	GUIDE	376057824	8.35	14654	0.033	0.175	0.080	0.129	50.665569	41.926280	-74.87	-2373.32

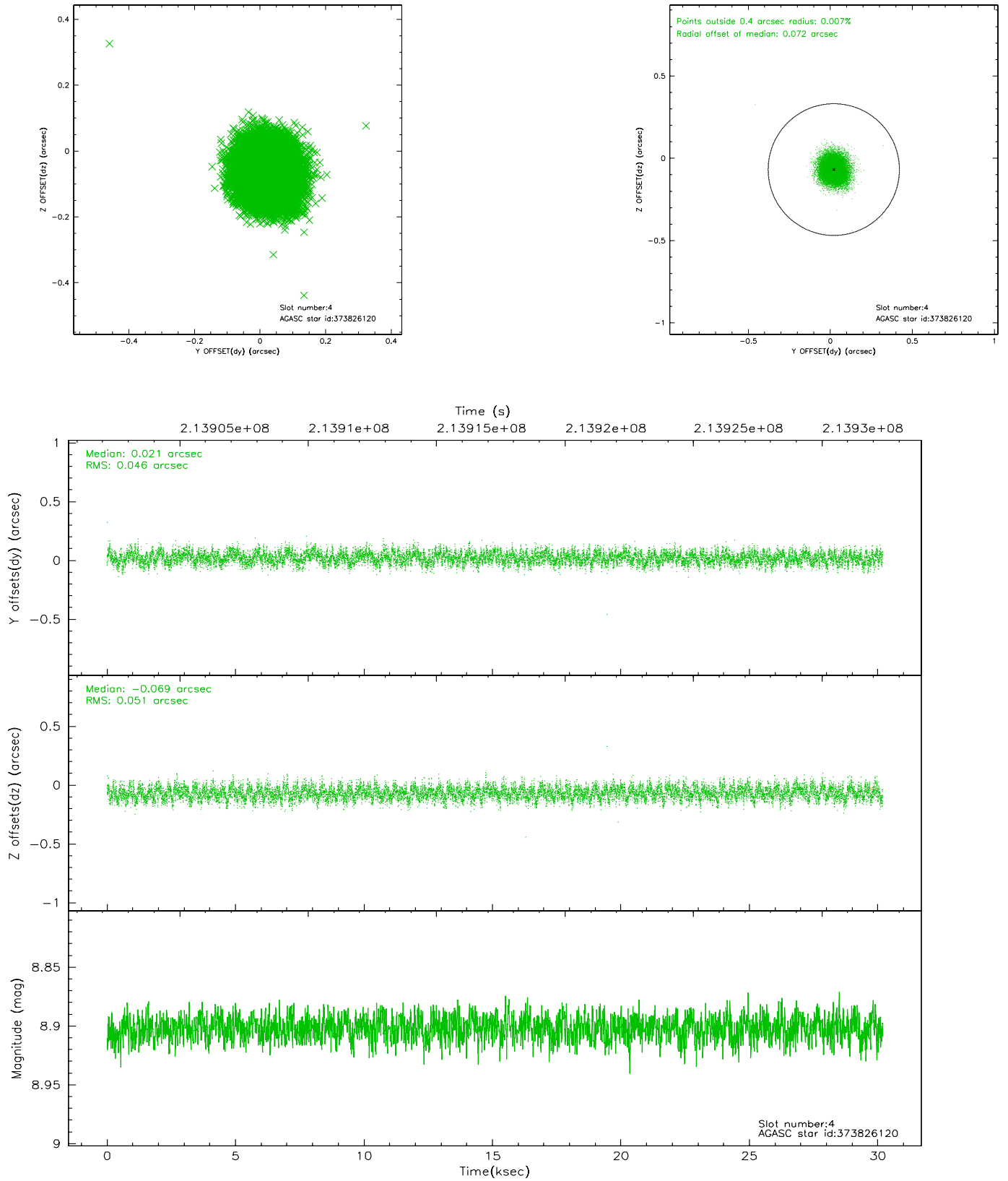


## 2.4 Star Slots

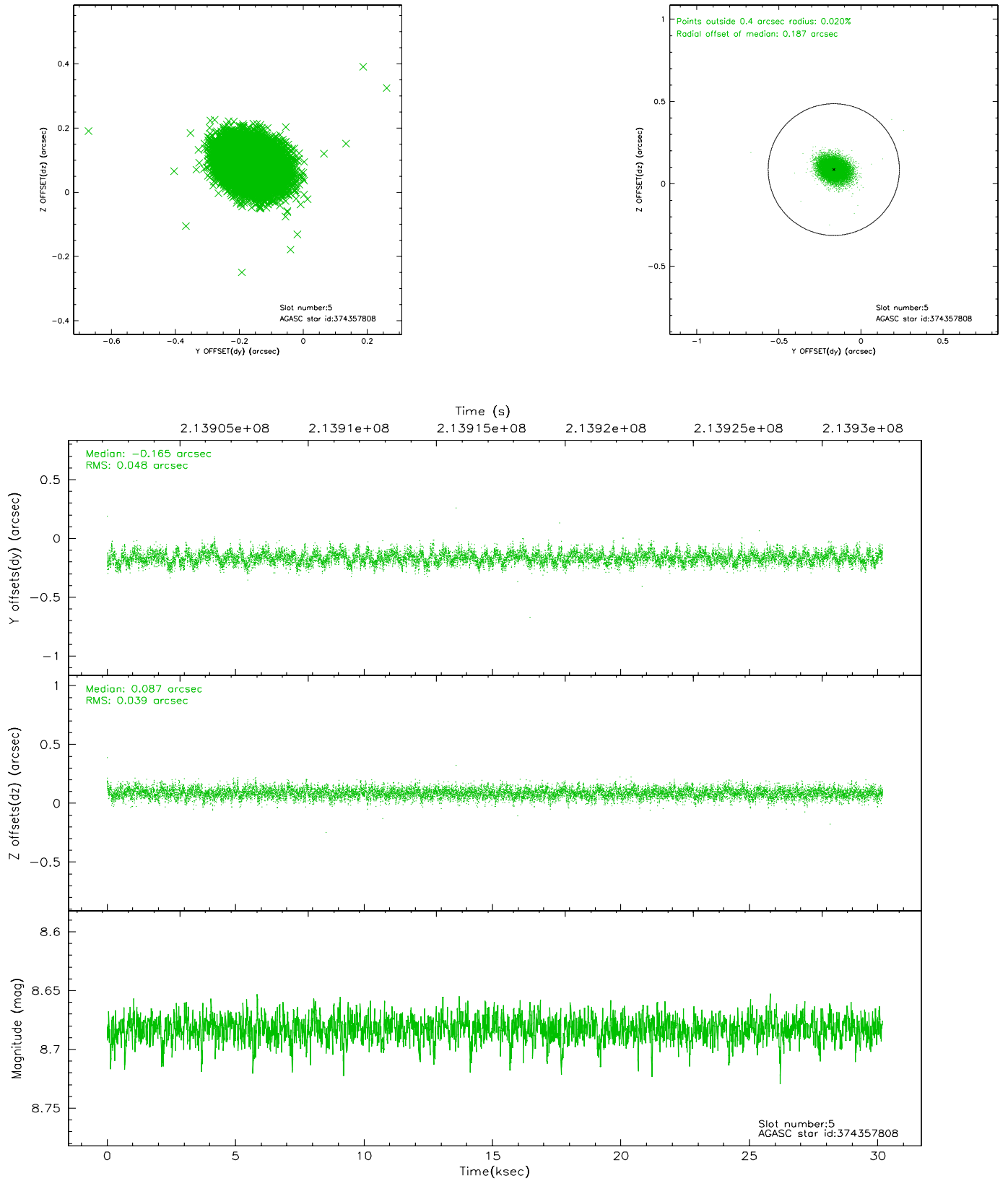
### 2.4.1 Slot 3



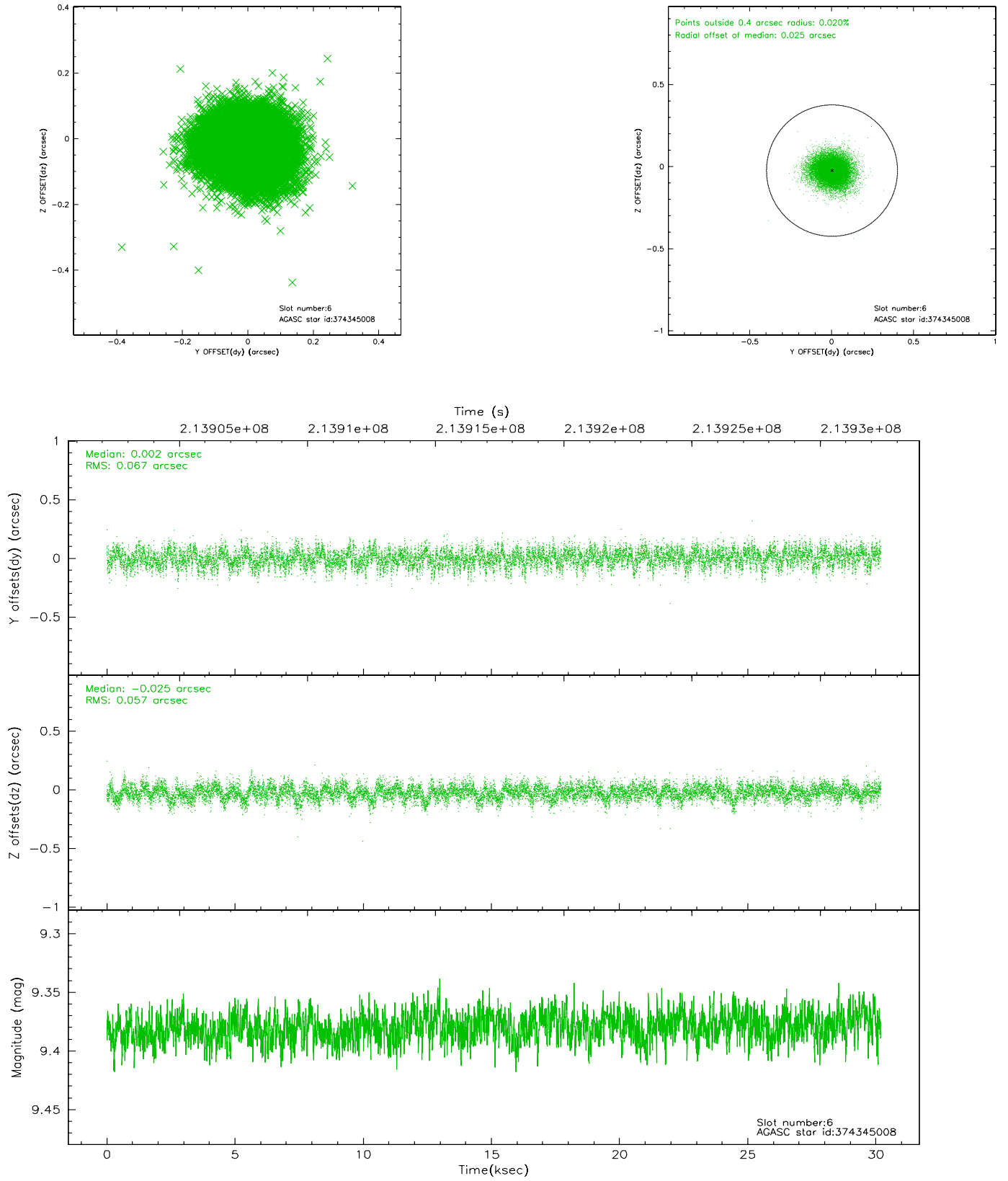
## 2.4.2 Slot 4



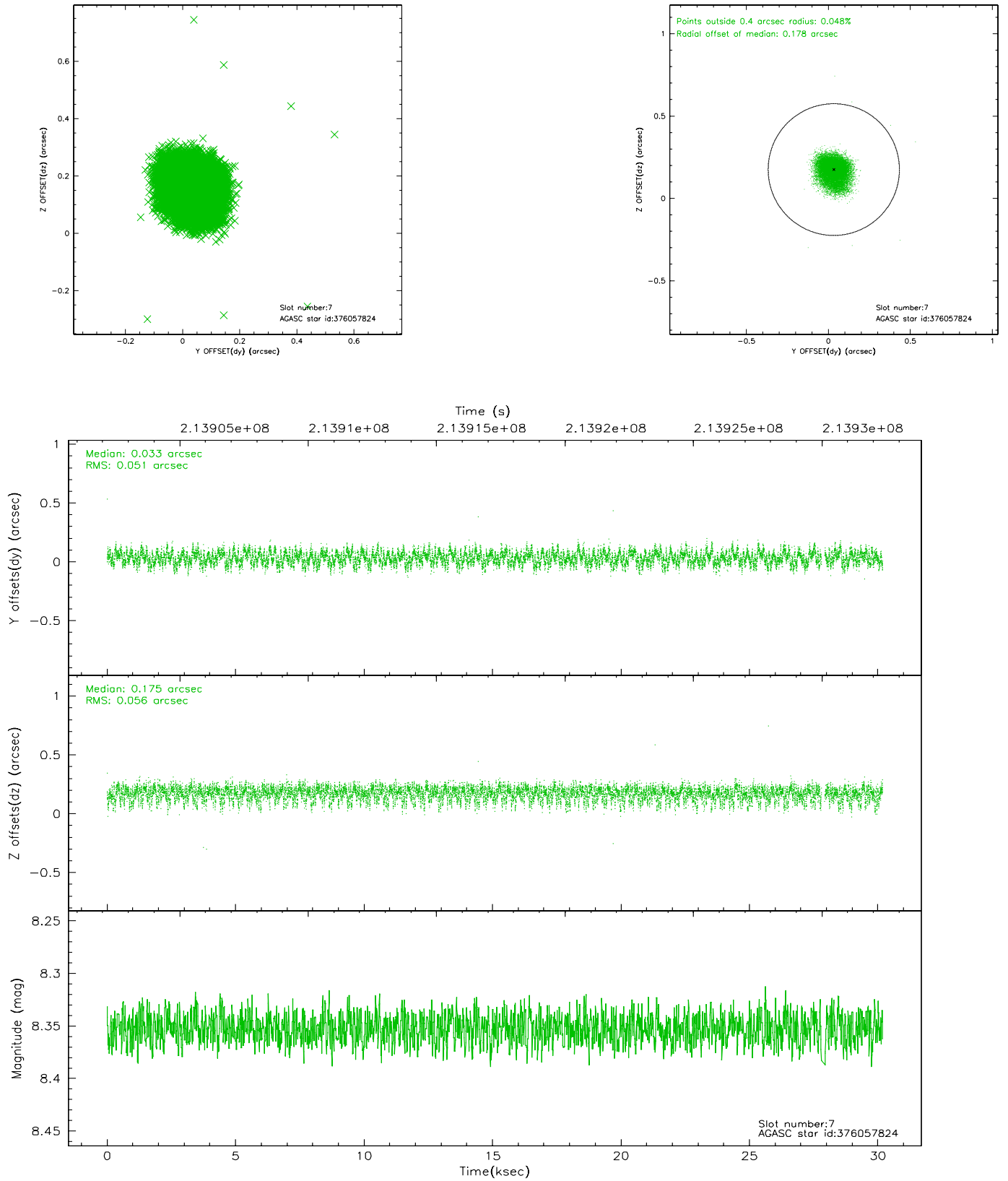
### 2.4.3 Slot 5



## 2.4.4 Slot 6

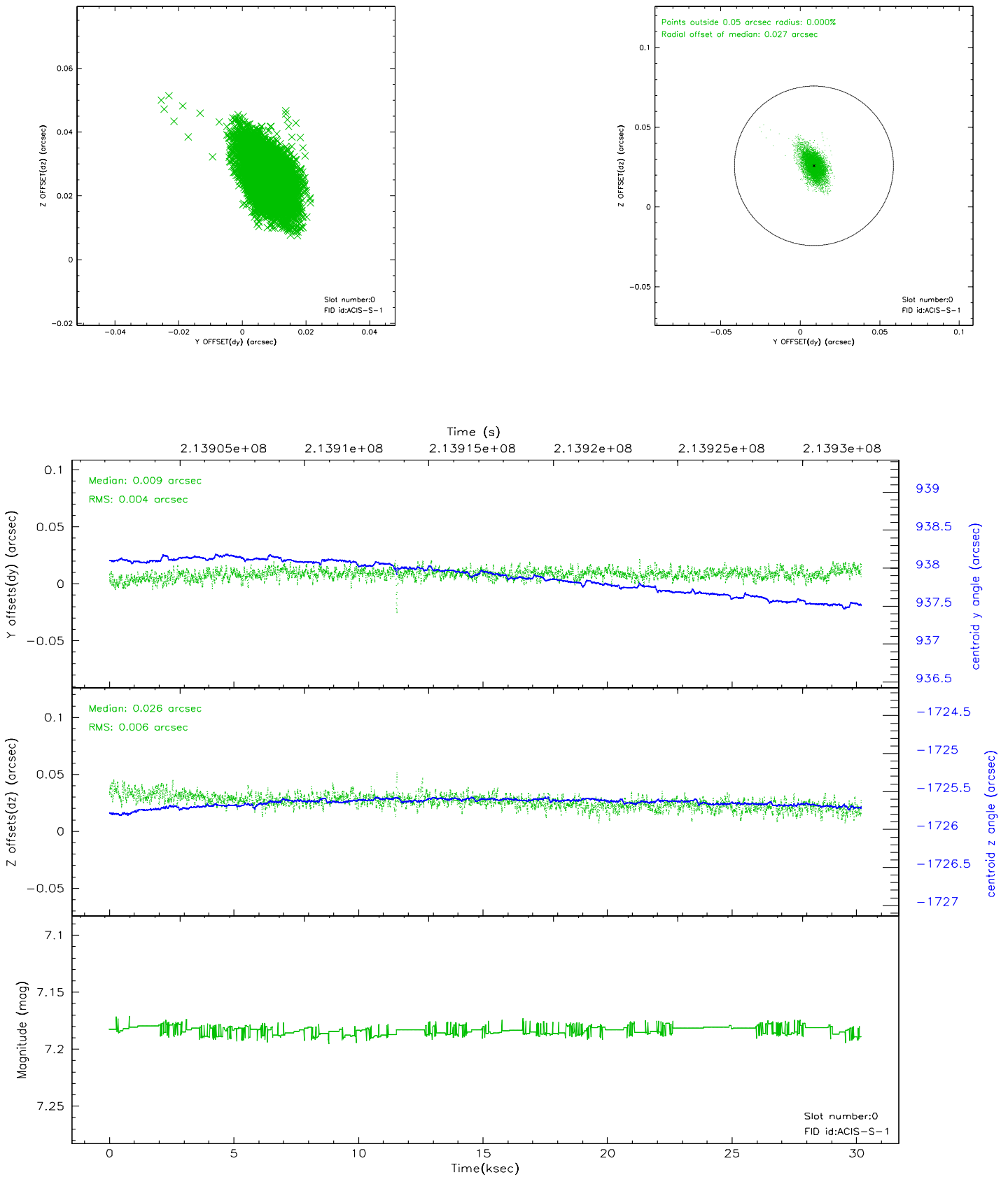


## 2.4.5 Slot 7

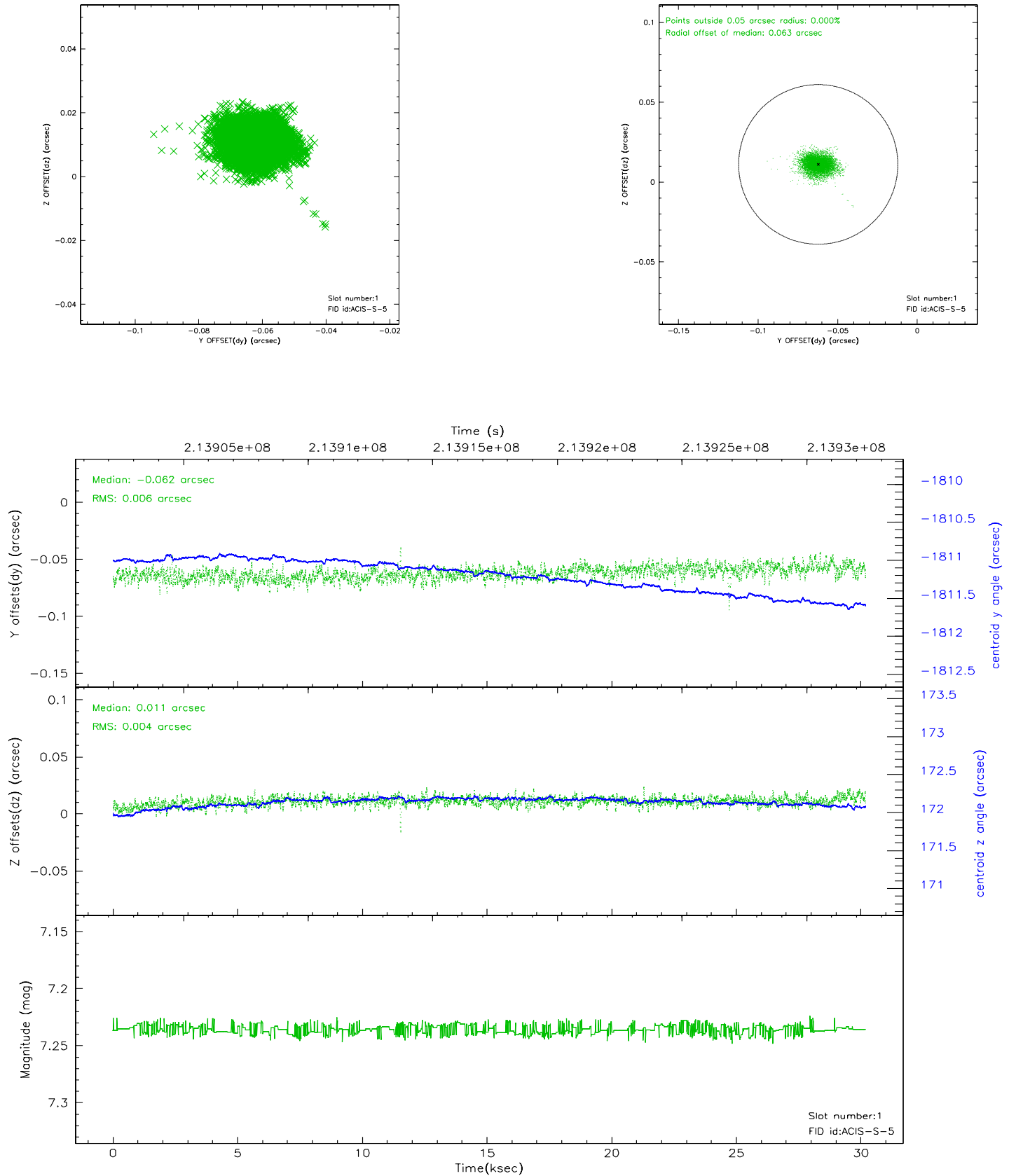


## 2.5 FID Slots

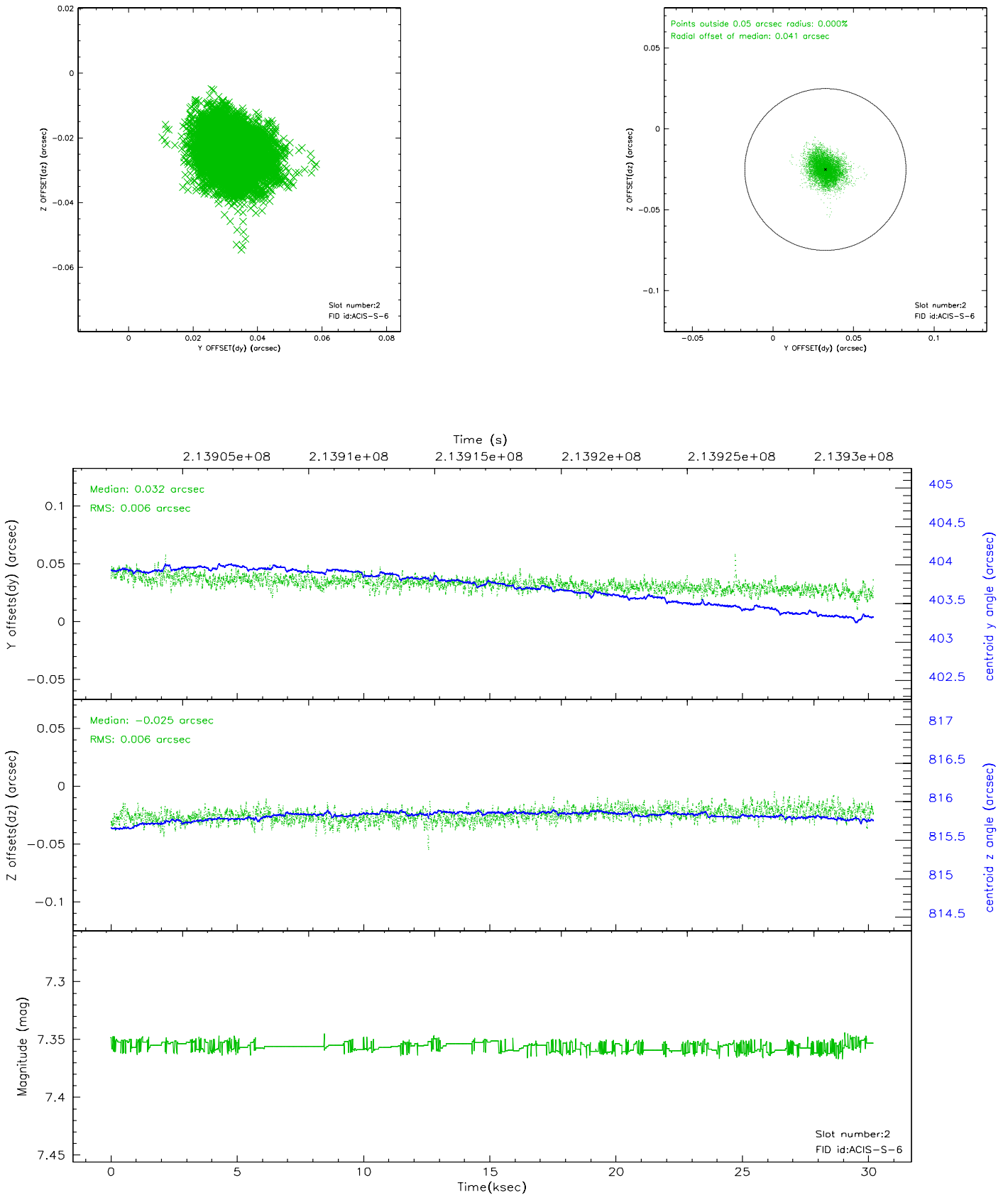
### 2.5.1 Slot 0



## 2.5.2 Slot 1

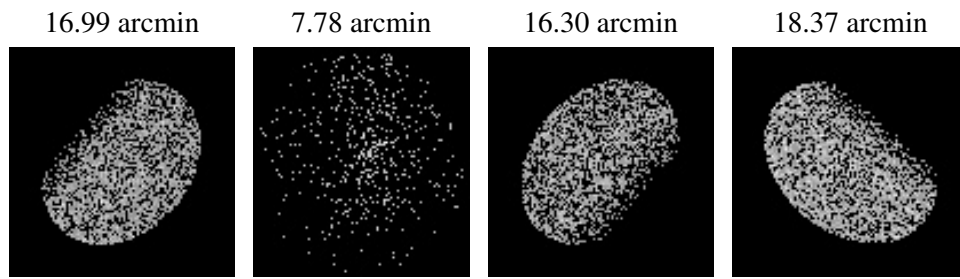


### 2.5.3 Slot 2





### 3 Point Sources



## A Summary

### A.1 Status

V&V Scientist	Beth Sundheim
V&V Date (YYYY-MM-DD)	2006.04.16
V&V Edition	1
V&V Disposition and Status	OK
V&V Charge Time	30.181

### A.2 Comments