

V&V Reference Report

L2 ASCDS Version : 7.6.7.2

Observation 4943 - L2 Version 002
Chandra X-Ray Center

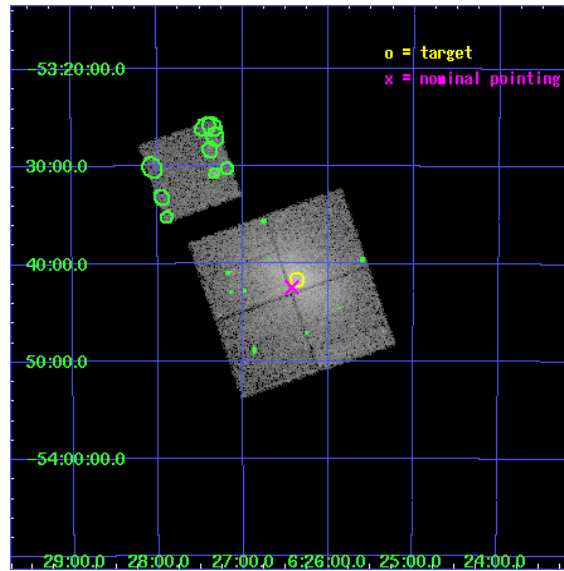
L2 Processing Date : Jun 13 2006

Contents

1	Front	2
2	OBI	3
2.1	OBI	3
2.1.1	Images	3
2.1.2	Bias	3
2.1.3	Parameters	4
2.1.4	Events	4
2.2	Compared Parameters	5
2.3	Aspect	6
2.4	Star Slots	9
2.4.1	Slot 3	9
2.4.2	Slot 4	10
2.4.3	Slot 5	11
2.4.4	Slot 6	12
2.4.5	Slot 7	13
2.5	FID Slots	14
2.5.1	Slot 0	14
2.5.2	Slot 1	15
3	Point Sources	16
A	Summary	17
A.1	Status	17
A.2	Comments	17

1 Front

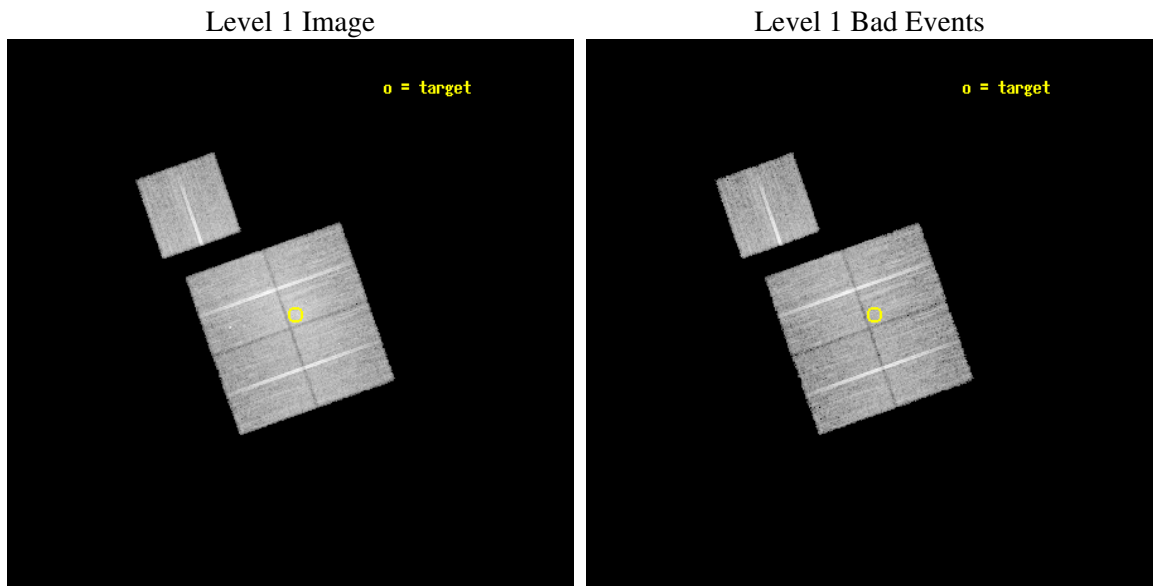
seq_num	800394
obs_id	4943
title	THE HIFLUGCS CLUSTER SURVEY: A CORNERSTONE FOR COSMOLOGY
observer	Dr. Thomas Reiprich
object	A3391
dtcycle	0
cycle	P
ra_targ	96.5925
dec_targ	-53.69375
ra_nom	96.606828504495
dec_nom	-53.707469555624
roll_nom	340.6972538781
revision	3
ontime	18692.999964058
livetime	18448.762157942
ontime0	18692.999964058
ontime1	18692.999964058
ontime2	18689.85897392
ontime3	18692.999964058
ontime6	18692.999964058
l2events	92605



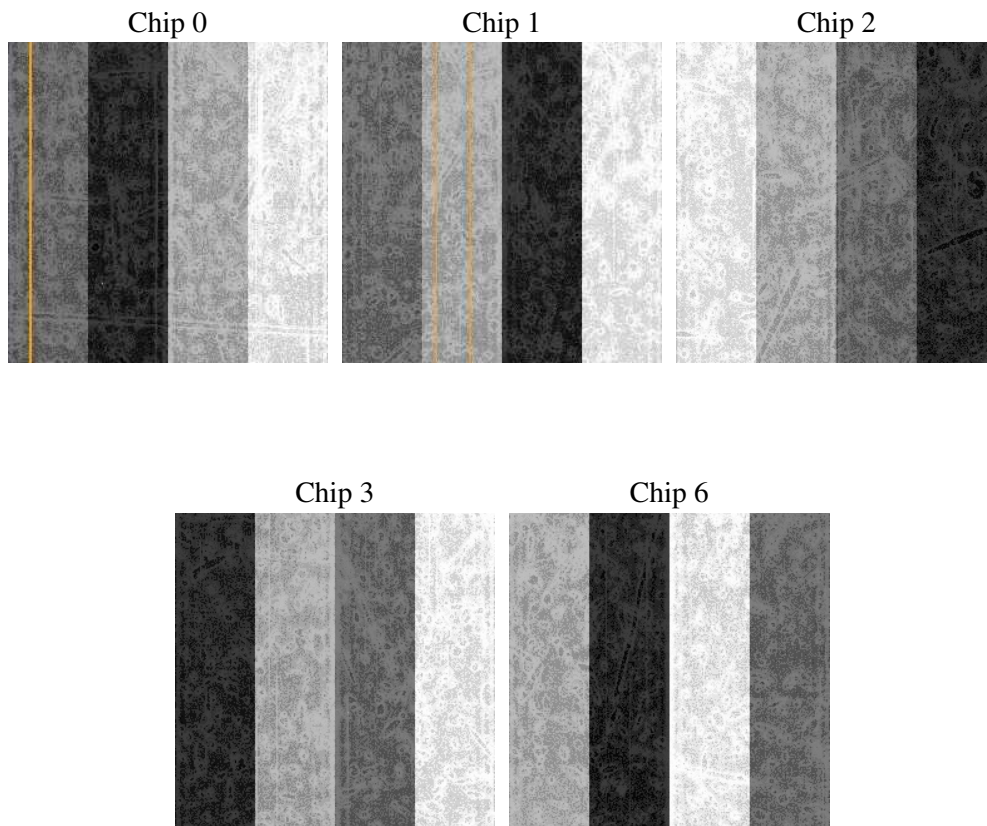
2 OBI

2.1 OBI

2.1.1 Images



2.1.2 Bias



2.1.3 Parameters

obi_num	1
ascdsver	7.6.7.2
caldbver	3.2.2
date	2006-06-12T23:20:14
revision	3

sched_exp_time	18545.000000
ontime	18764.365158111
ontime0	18764.365158111
ontime1	18764.365158111
ontime2	18761.224167973
ontime3	18764.365158111
ontime6	18764.365158111
l1events	534566

2.1.4 Events

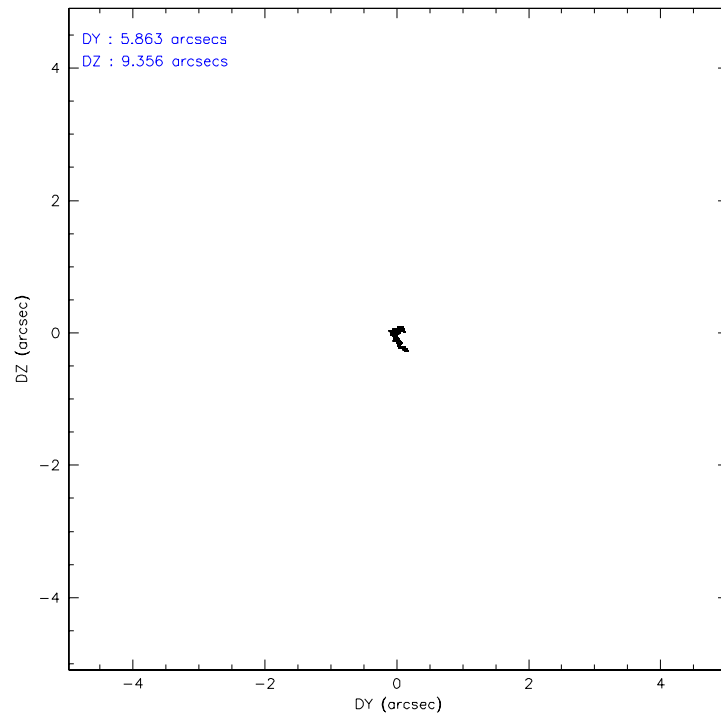
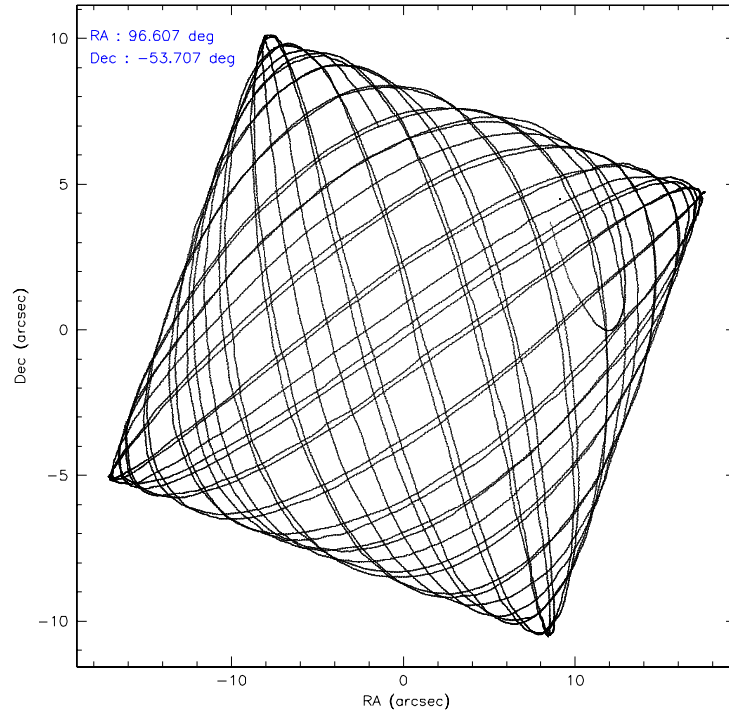
	ccd 0	ccd 1	ccd 2	ccd 3	ccd 6
level 1 events	94978	103220	117985	117269	101114
rejected events	78875	79643	93738	90339	87897
rejected %	83%	77%	79%	77%	86%

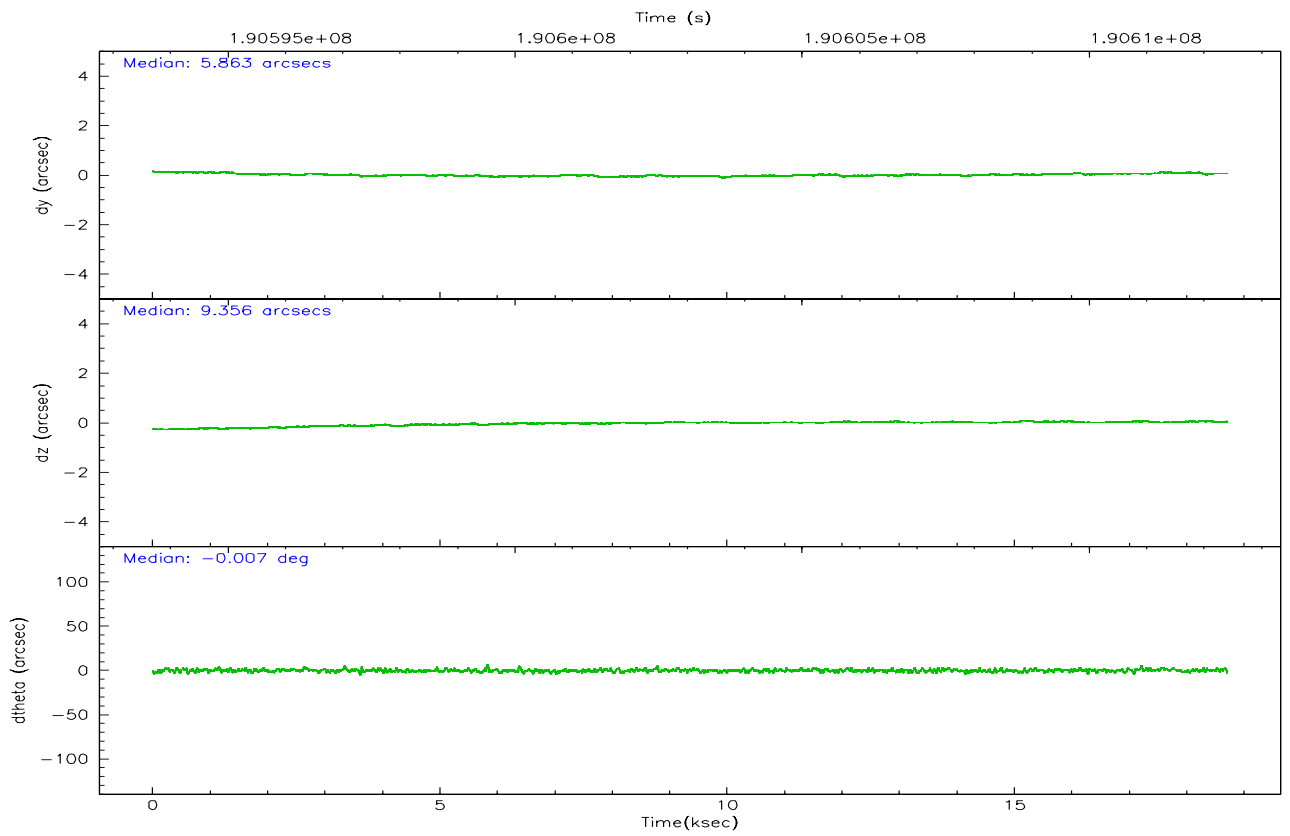
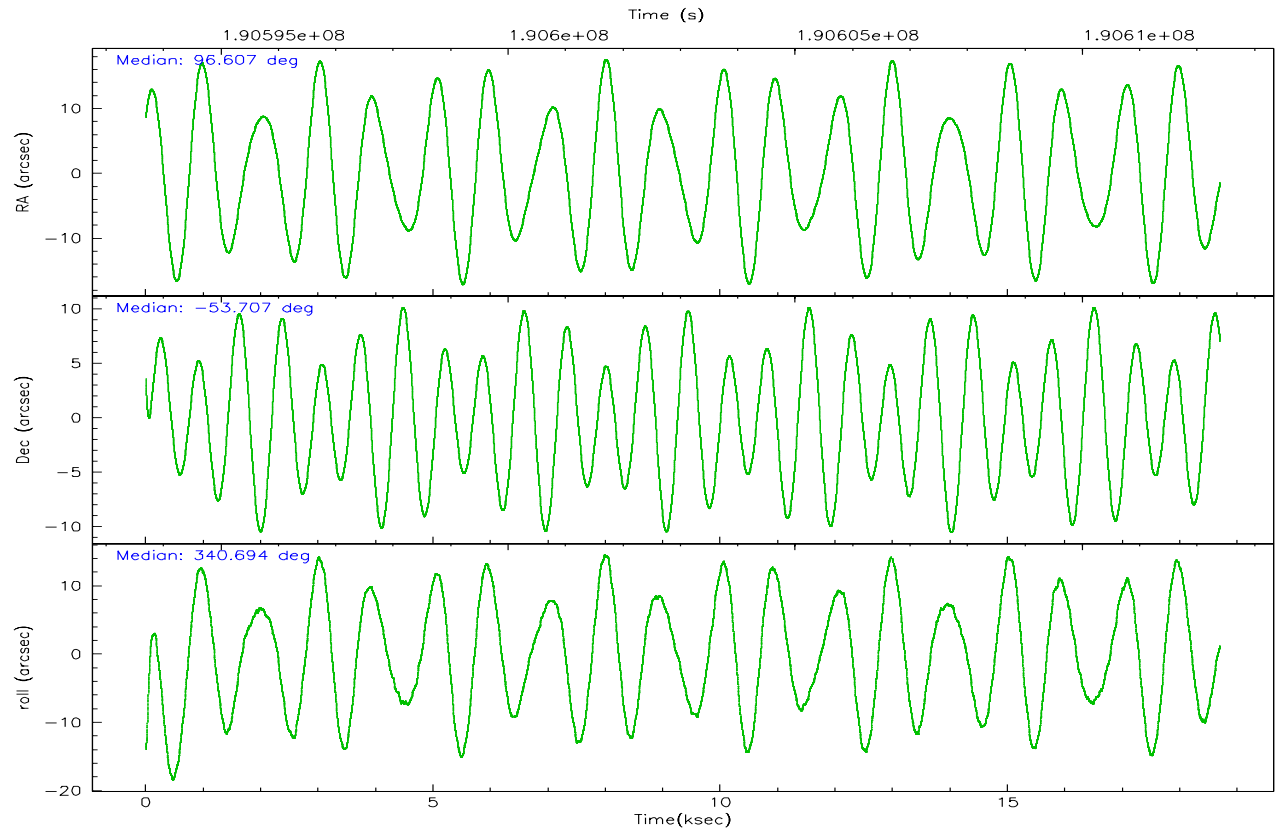
	ccd 0	ccd 1	ccd 2	ccd 3	ccd 6
grade 0 events	8504	14200	15542	17845	6071
	8%	13%	13%	15%	6%
grade 1 events	60	79	98	103	53
	0%	0%	0%	0%	0%
grade 2 events	2963	3736	3650	3701	2466
	3%	3%	3%	3%	2%
grade 3 events	1413	1651	1450	1611	1211
	1%	1%	1%	1%	1%
grade 4 events	1279	1542	1507	1579	1231
	1%	1%	1%	1%	1%
grade 5 events	3582	3782	3319	3973	3844
	3%	3%	2%	3%	3%
grade 6 events	2021	2545	2184	2300	2291
	2%	2%	1%	1%	2%
grade 7 events	75156	75685	90235	86157	83947
	79%	73%	76%	73%	83%

2.2 Compared Parameters

Parameter	Planned	Actual	Parameter	Planned	Actual
Instrument	ACIS	ACIS	Obspar format version number	6	6
Detector	ACIS-01236	ACIS-01236	Obspar file type	PREDICTED	ACTUAL
Grating	NONE	NONE	Obspar update status	NONE	UPDATED
Data mode	VFAINT	VFAINT	On-chip summing requested	N	N
Observation mode	POINTING	POINTING	Subarray requested	NONE	NONE
Pointing RA	96.561426	96.60682850449453	Alternating exposures requested	N	N
Pointing Dec	-53.712686	-53.707469555562392	Primary exposure time	0.000000	3.1
Pointing Roll	340.451979	340.6972538780976			
SIM focus pos (mm)	-0.782348	-0.7809083437167272			
SIM defocus (mm)	0	0.001439871863259334			
SIM translation stage pos (mm)	-233.592463	-233.5874344608287			
SIM translation stage offset (mm)	0	-0.005018542100998502			
Observation start time	190593856.184000	190592863.96664			
Observation start date	2004-01-15T22:43:12	2004-01-15T22:27:43			
Observation end time	190612401.184000	190613181.00502			
Observation end date	2004-01-16T03:52:17	2004-01-16T04:06:21			
Read mode	TIMED	TIMED			

2.3 Aspect



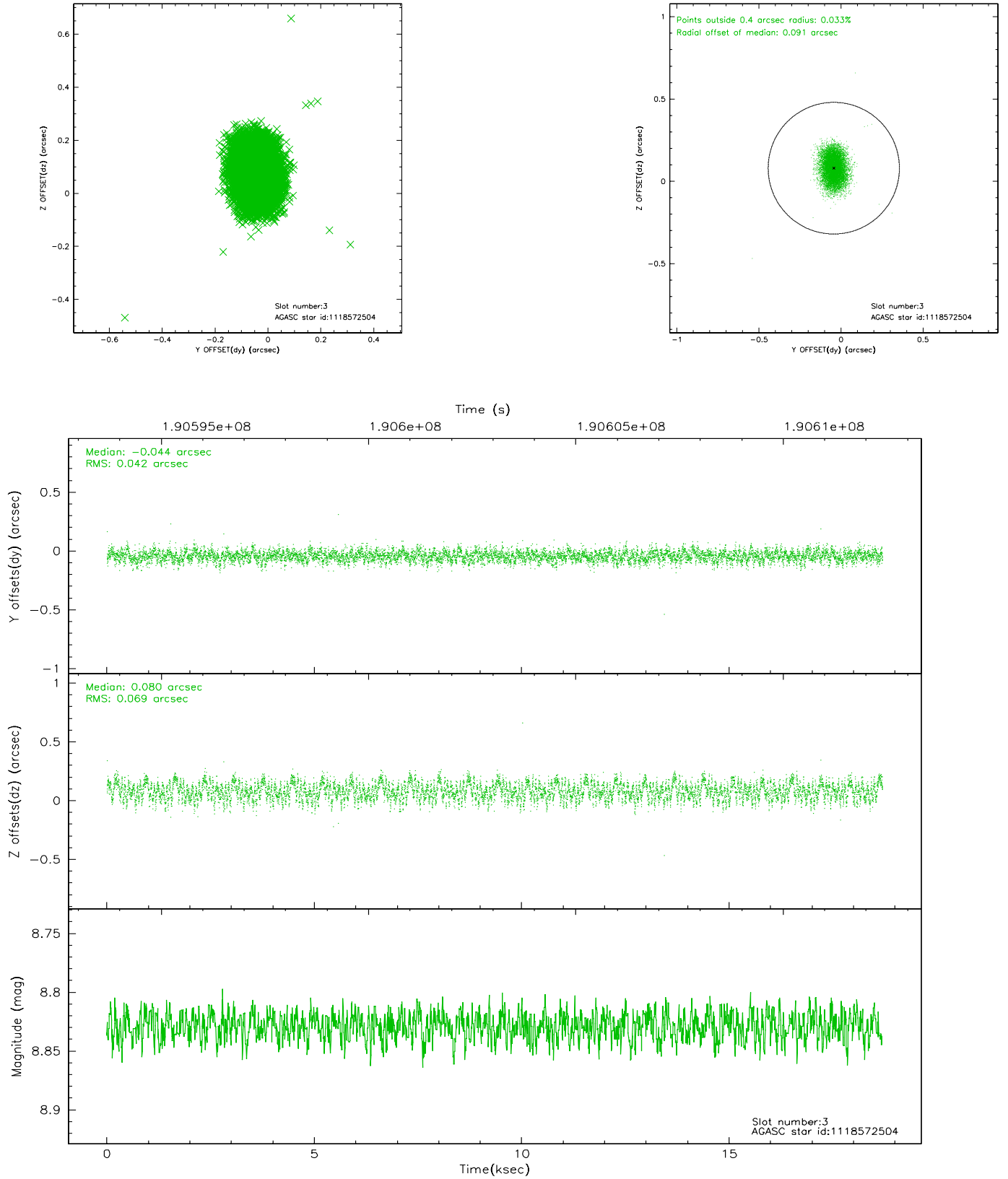


Slot Statistics

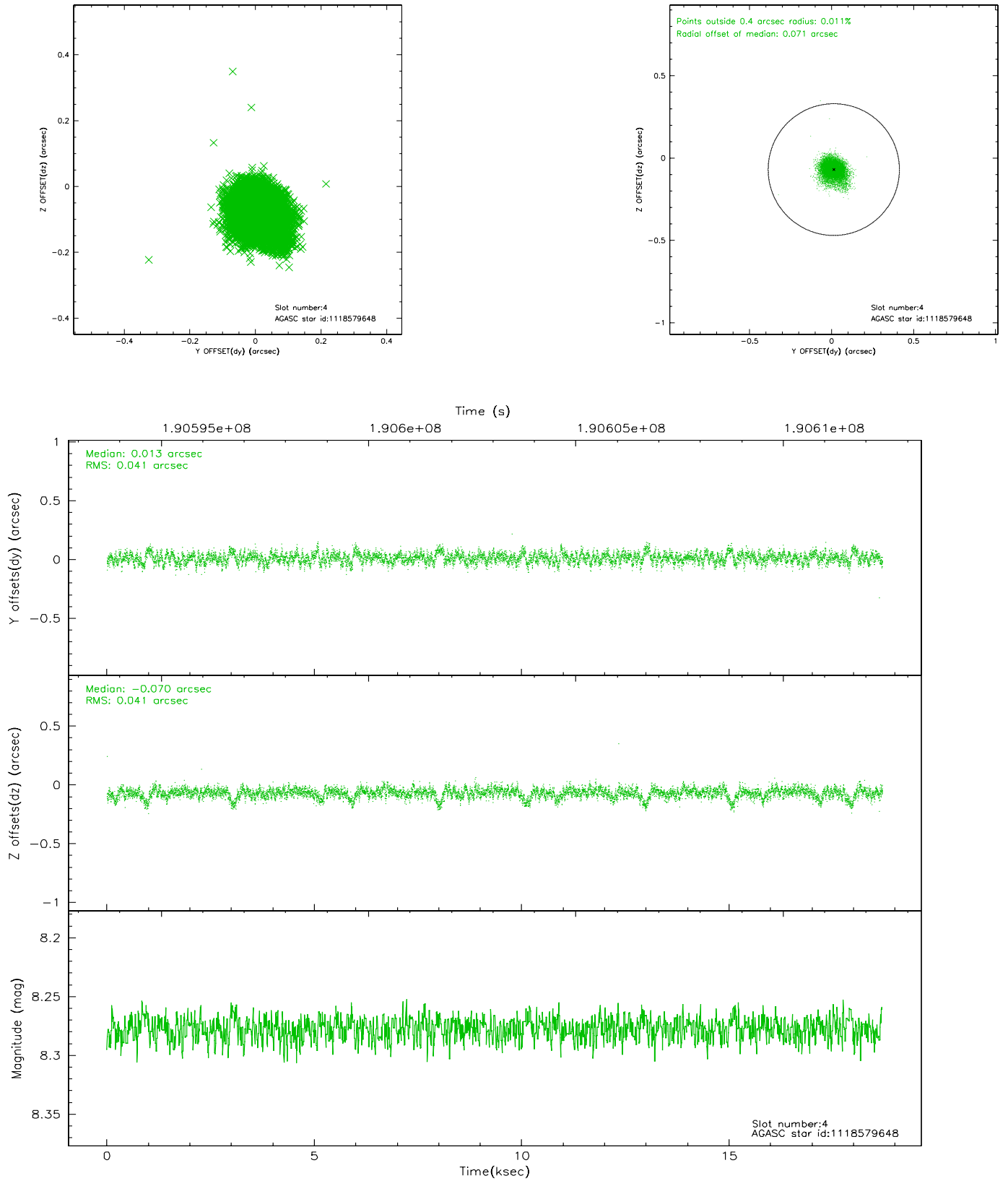
slot	status	id	mag	n_pts	med_dy	med_dz	dr1	dr2	ra	dec	mean_y	mean_z
0	FID	ACIS-I-1	7.24	4561	-0.015	0.024	0.004	0.009	0.000000	0.000000	933.90	-832.67
1	FID	ACIS-I-2	7.14	4561	-0.045	0.022	0.004	0.009	0.000000	0.000000	-760.10	-839.37
2	OMITTED		0.00	0	0.000	0.000	0.000	0.000	0.000000	0.000000	0.00	0.00
3	GUIDE	1118572504	8.83	9118	-0.044	0.080	0.086	0.136	95.500559	-53.969973	-1801.11	-1640.25
4	GUIDE	1118579648	8.28	9121	0.013	-0.070	0.059	0.104	95.882841	-53.426139	-1714.58	478.31
5	GUIDE	1118709640	8.36	9121	0.101	-0.034	0.057	0.092	96.832931	-53.566231	371.01	690.30
6	GUIDE	1118585584	9.29	9117	-0.065	0.013	0.115	0.179	96.562758	-53.004125	-850.76	2404.92
7	GUIDE	1118708840	9.35	9112	-0.008	0.022	0.120	0.188	97.367547	-53.266037	1100.96	2087.24

2.4 Star Slots

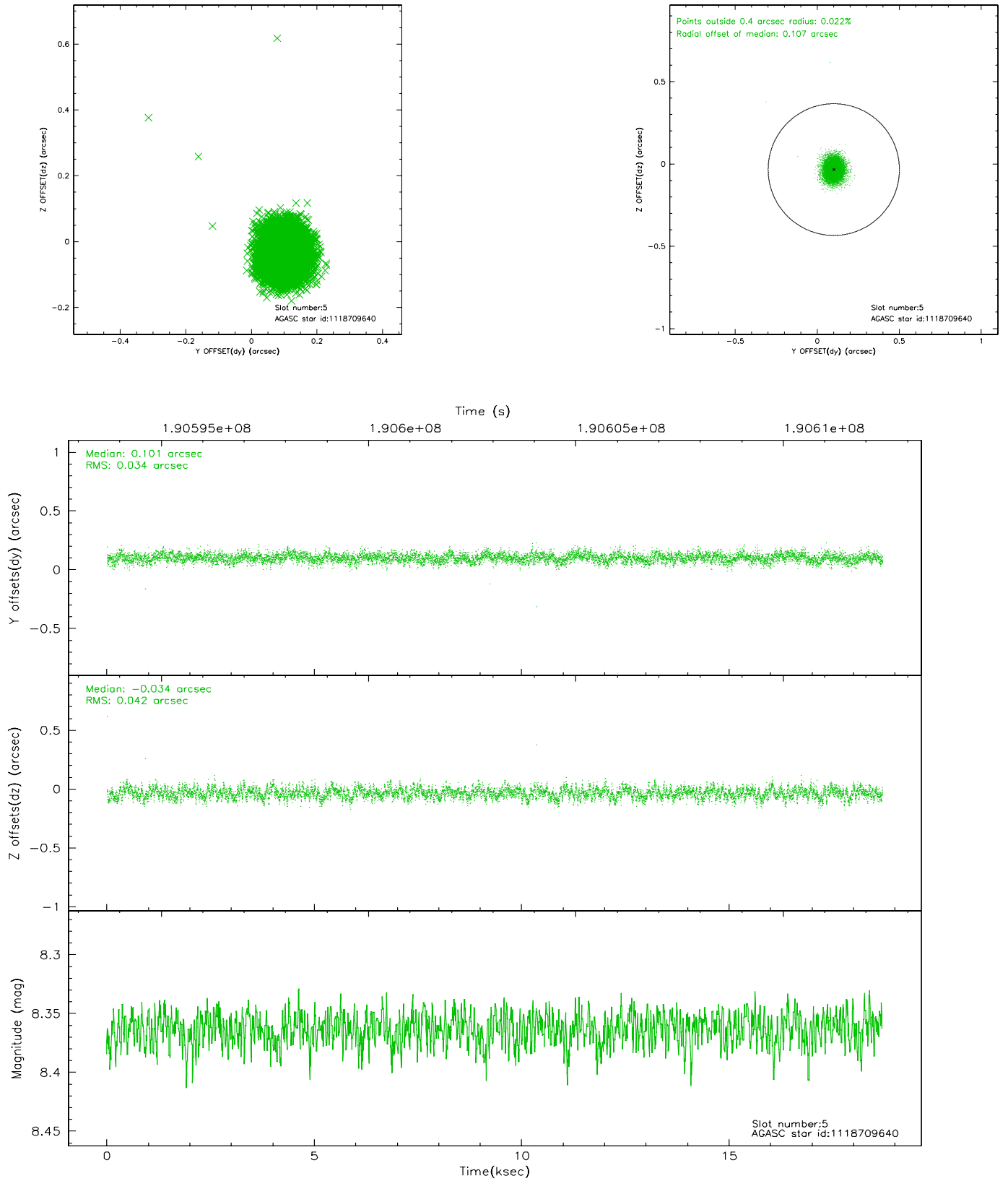
2.4.1 Slot 3



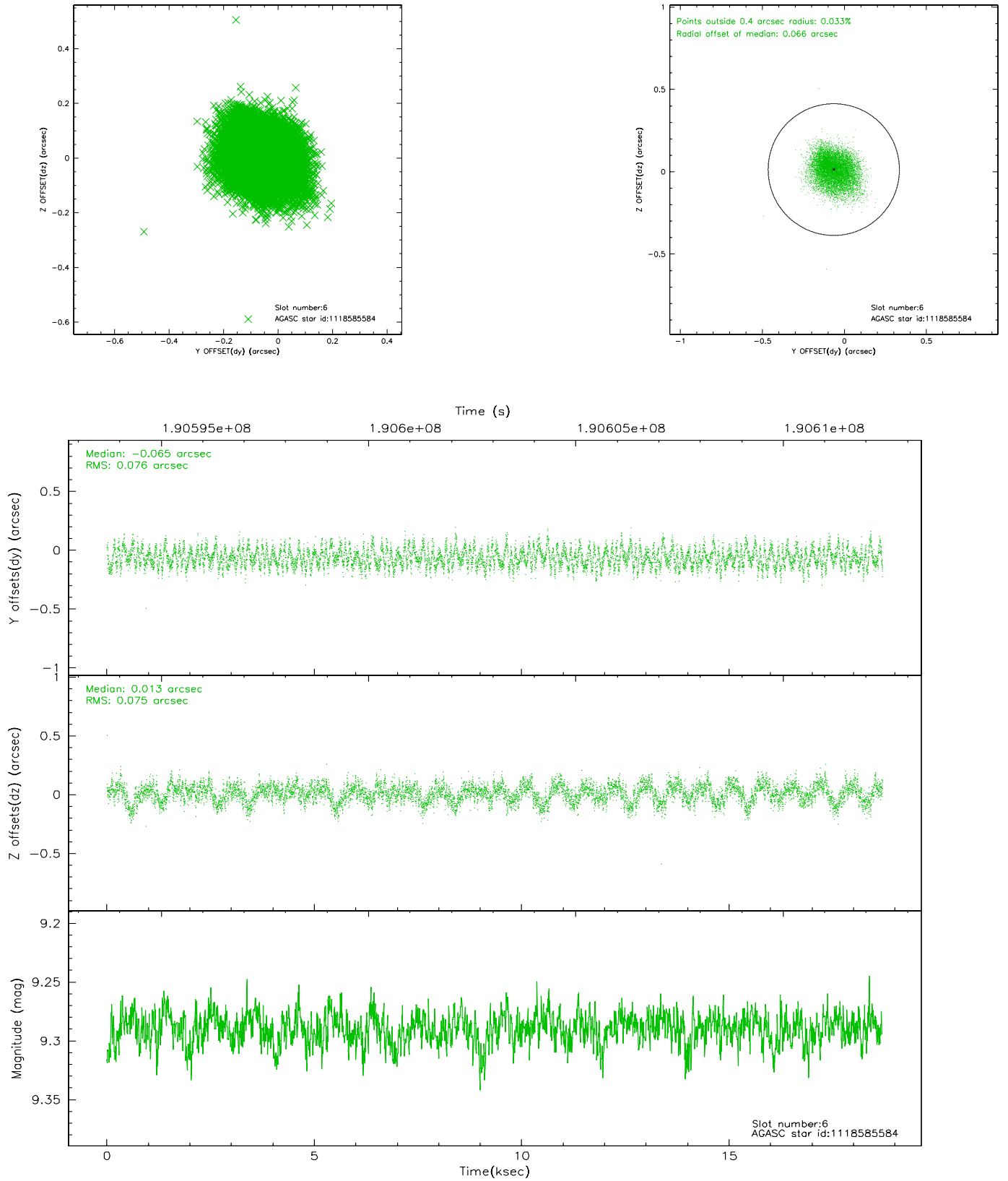
2.4.2 Slot 4



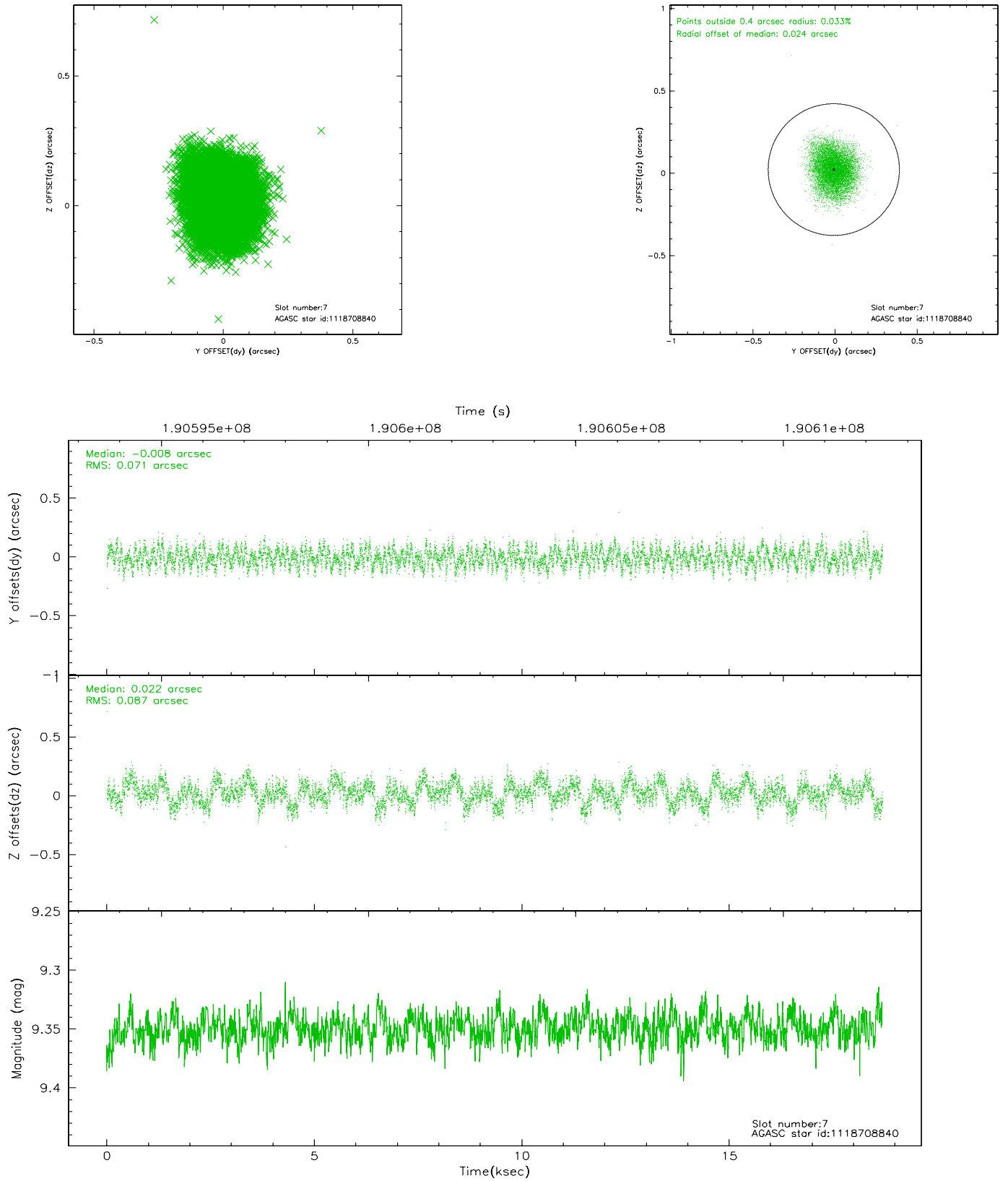
2.4.3 Slot 5



2.4.4 Slot 6

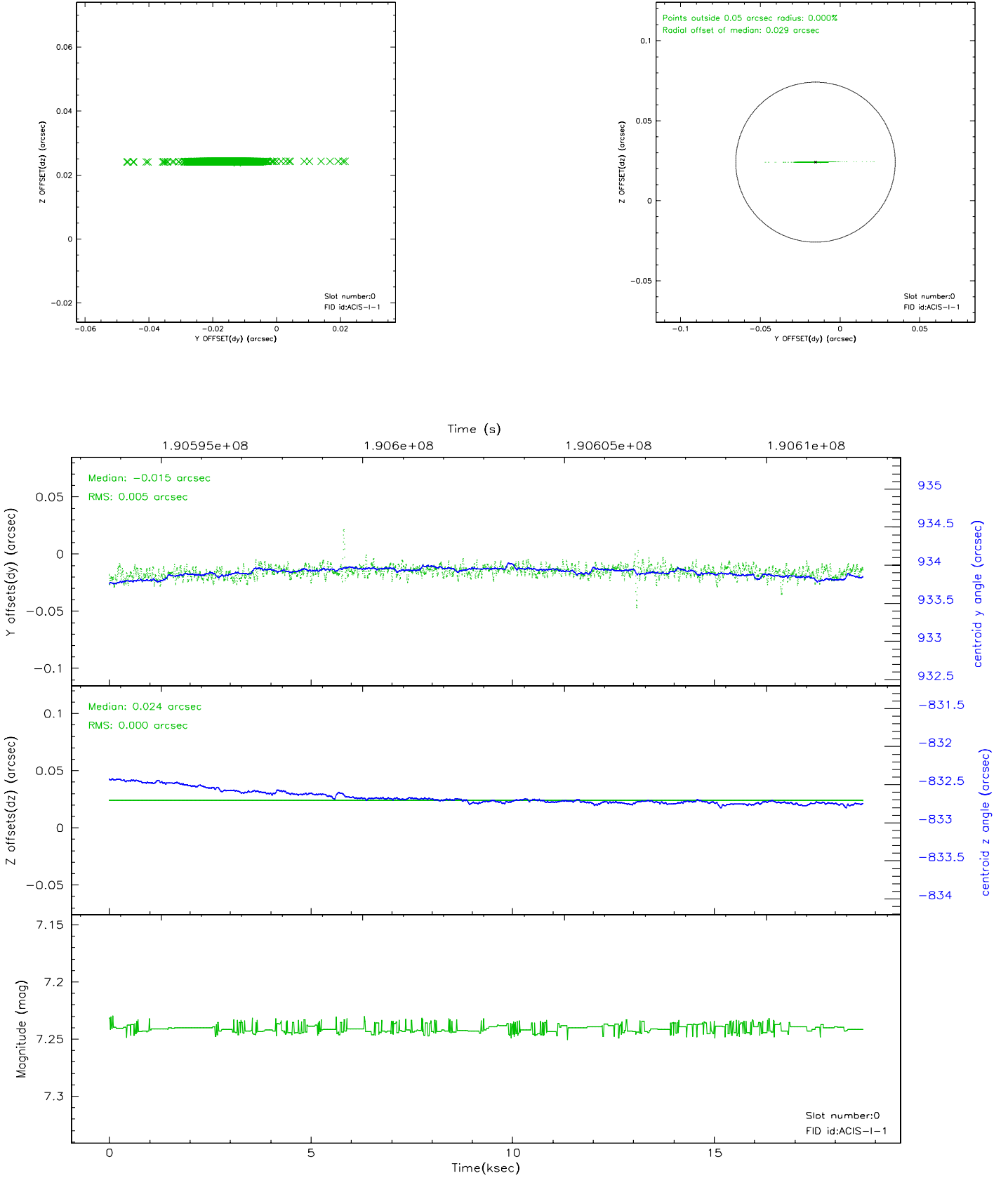


2.4.5 Slot 7

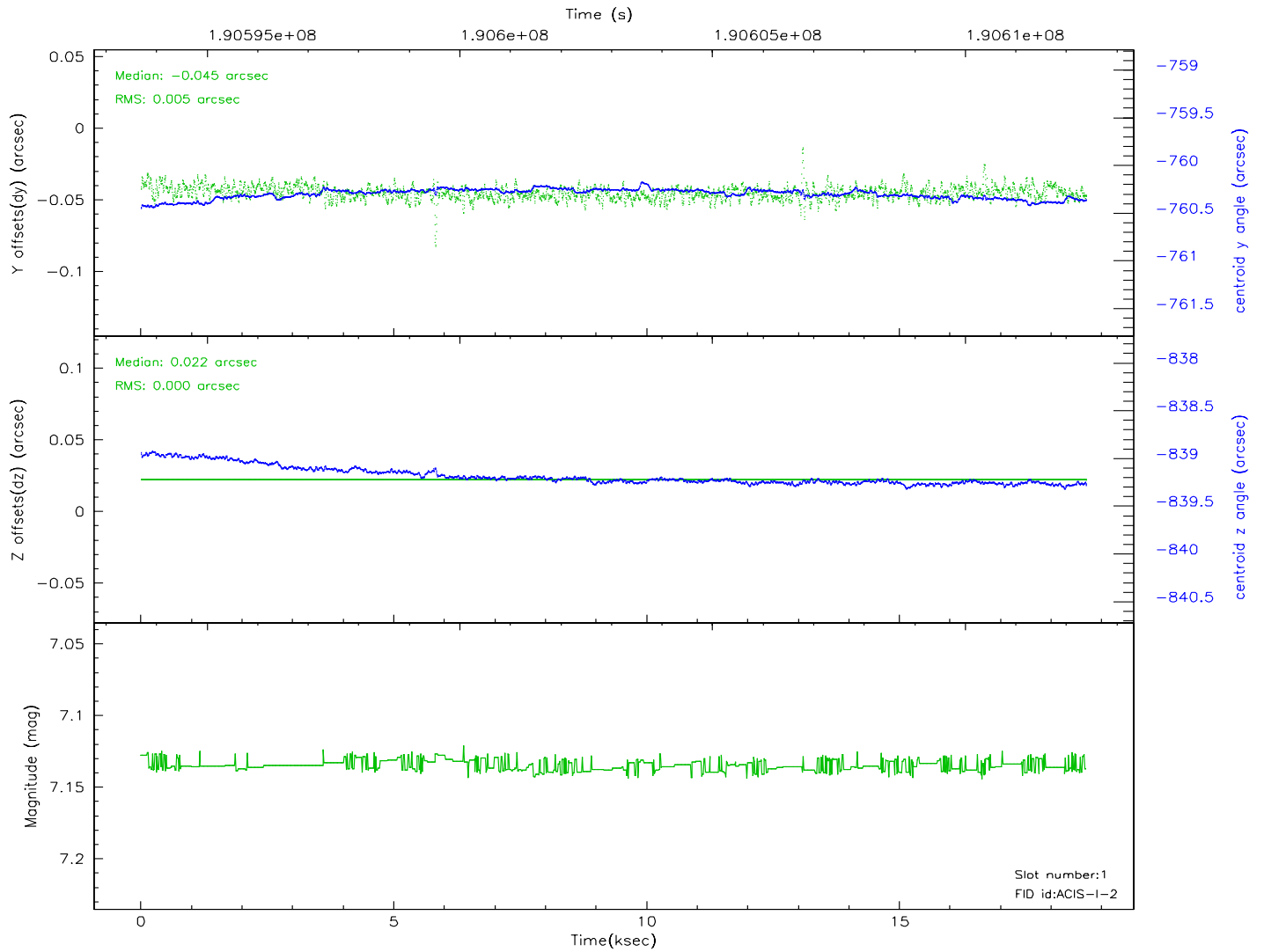
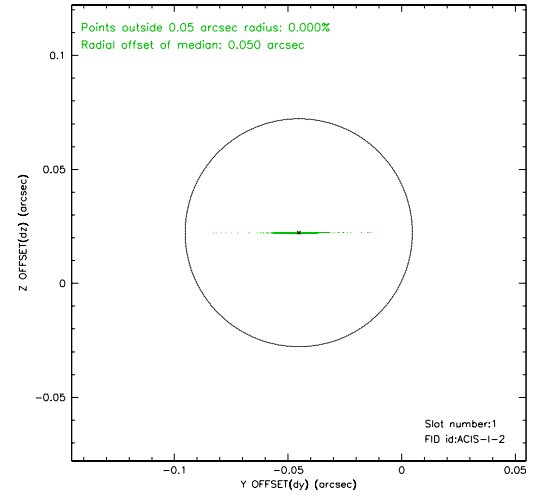
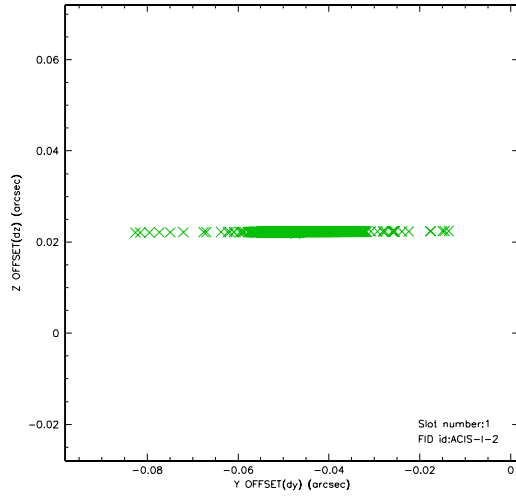


2.5 FID Slots

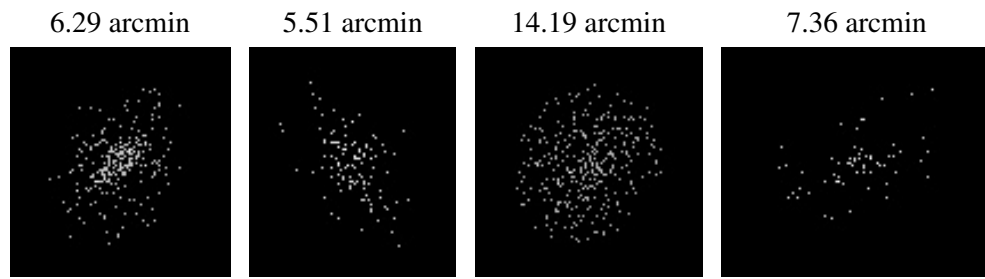
2.5.1 Slot 0



2.5.2 Slot 1



3 Point Sources



A Summary

A.1 Status

V&V Scientist	Beth Sundheim
V&V Date (YYYY-MM-DD)	2006.06.15
V&V Edition	1
V&V Disposition and Status	OK
V&V Charge Time	18.692

A.2 Comments