

V&V Reference Report

L2 ASCDS Version : 8.4.5

Observation 4941 - L2 Version 3
Chandra X-Ray Center

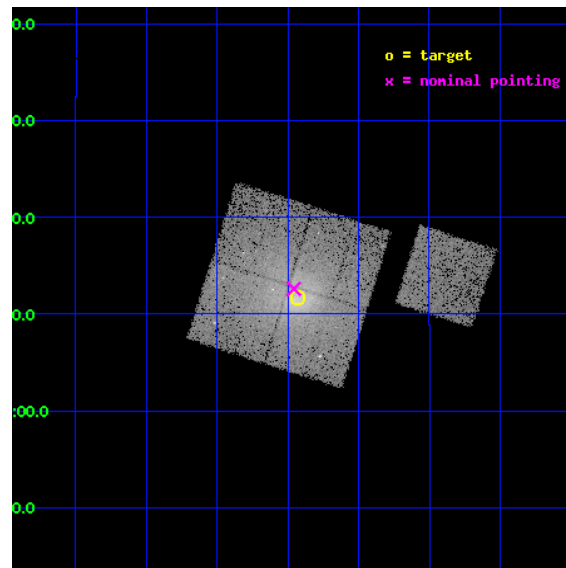
L2 Processing Date : Dec 1 2012

Contents

1	Front	2
2	OBI	3
2.1	OBI	3
2.1.1	Images	3
2.1.2	Bias	3
2.1.3	Parameters	4
2.1.4	Events	4
2.2	Compared Parameters	5
2.3	Aspect	6
2.4	Star Slots	9
2.4.1	Slot 3	9
2.4.2	Slot 4	10
2.4.3	Slot 5	11
2.4.4	Slot 6	12
2.4.5	Slot 7	13
2.5	FID Slots	14
2.5.1	Slot 0	14
2.5.2	Slot 1	15
2.5.3	Slot 2	16
A	Summary	17
A.1	Status	17
A.2	Comments	17

1 Front

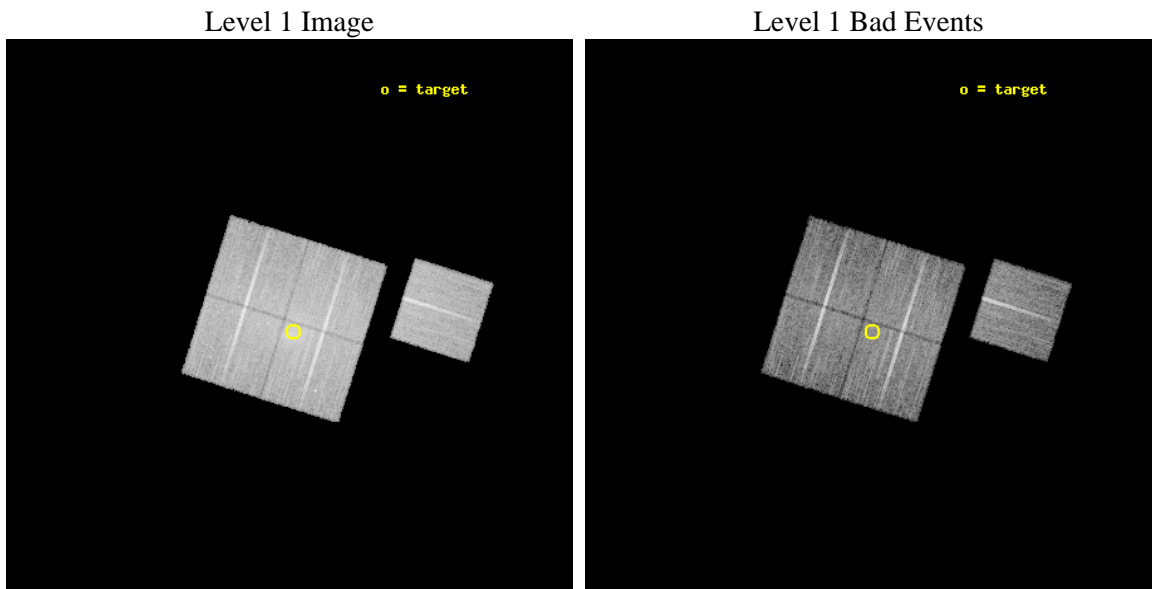
seq_num	800392	Sequence number
obs_id	4941	Observation id
title	THE HIFLUGCS CLUSTER SURVEY: A CORNERSTONE FOR COSMOLOGY	Proposal
observer	Dr. Thomas Reiprich	Principal investigator
object	A2657	Source name
dtcycle	0	
cycle	P	events from which exps? Prim/Second/Both
ra_targ	356.233333	Observer's specified target RA [deg]
dec_targ	9.195194	Observer's specified target Dec [deg]
ra_nom	356.23930904799	Nominal RA [deg]
dec_nom	9.2102822152612	Nominal Dec [deg]
roll_nom	107.53832290549	Nominal Roll [deg]
revision	3	Processing version of data
ontime	16361.564406842	Sum of GTIs [s]
livetime	16147.788522658	Livetime [s]
ontime0	16358.300316602	Sum of GTIs [s]
ontime1	16355.200386345	Sum of GTIs [s]
ontime2	16358.382396609	Sum of GTIs [s]
ontime3	16361.564406842	Sum of GTIs [s]
ontime6	16361.400246829	Sum of GTIs [s]
l2events	84570	Number of level 2 events



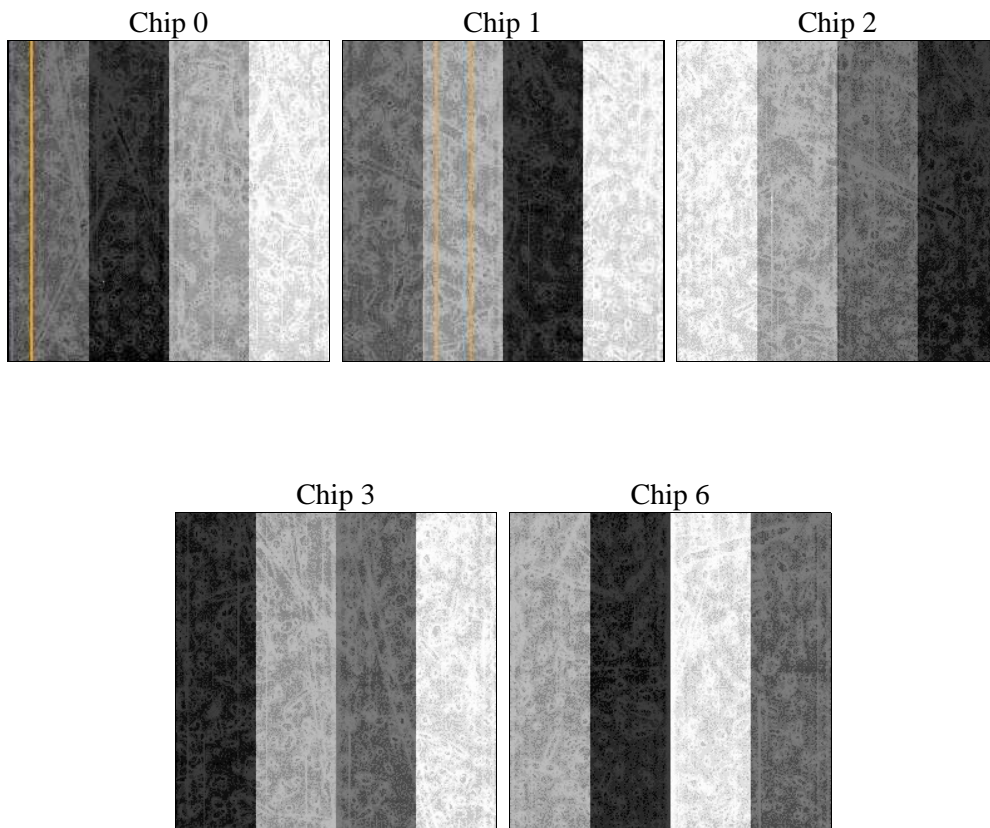
2 OBI

2.1 OBI

2.1.1 Images



2.1.2 Bias



2.1.3 Parameters

obi_num	0	Obi number	sched_exp_time	16592.000000	[s] Scheduled observation exposure time
ascdsver	8.4.5	Processing system revision	ontime	16361.564406842	Sum of GTIs [s]
caldsver	4.5.2	 	ontime0	16358.300316602	Sum of GTIs [s]
date	2012-12-01T08:23:40	Date and time of file creation	ontime1	16355.200386345	Sum of GTIs [s]
revision	3	Processing version of data	ontime2	16358.382396609	Sum of GTIs [s]
			ontime3	16361.564406842	Sum of GTIs [s]
			ontime6	16361.400246829	Sum of GTIs [s]
			l1events	546839	Number of level 1 events

2.1.4 Events

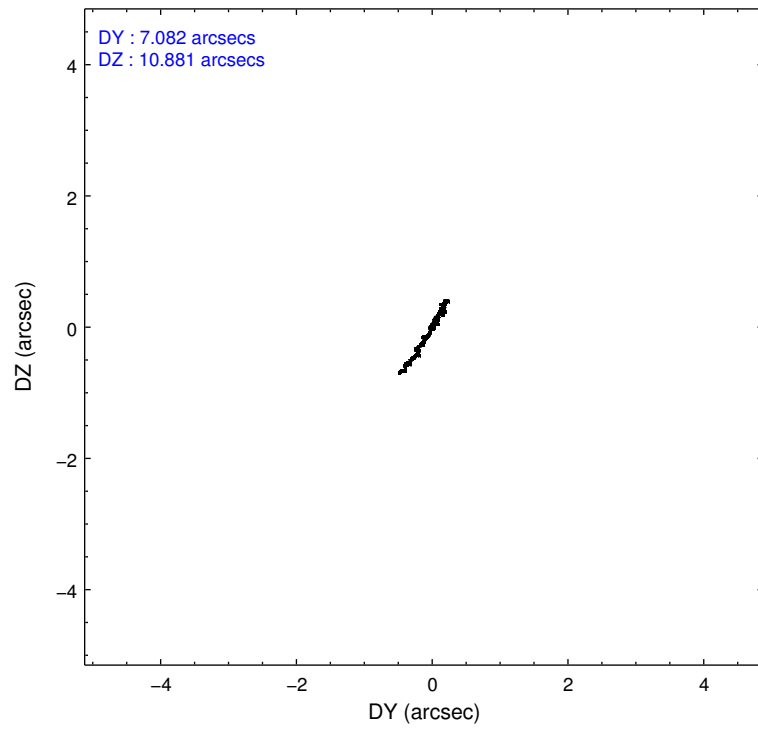
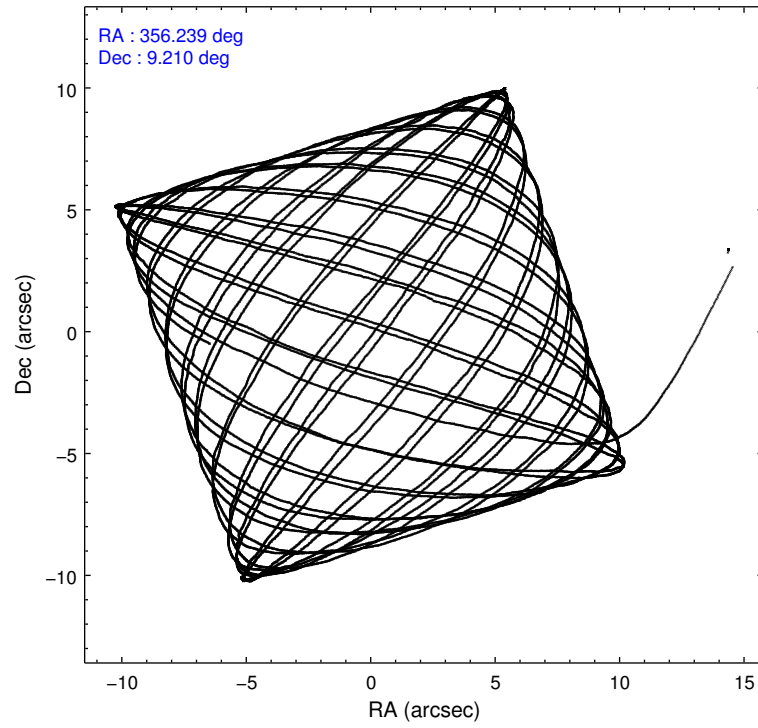
	ccd 0	ccd 1	ccd 2	ccd 3	ccd 6
level 1 events	100192	108269	117140	120212	101026
rejected events	84182	87133	98001	91794	90454
rejected %	84%	80%	83%	76%	89%

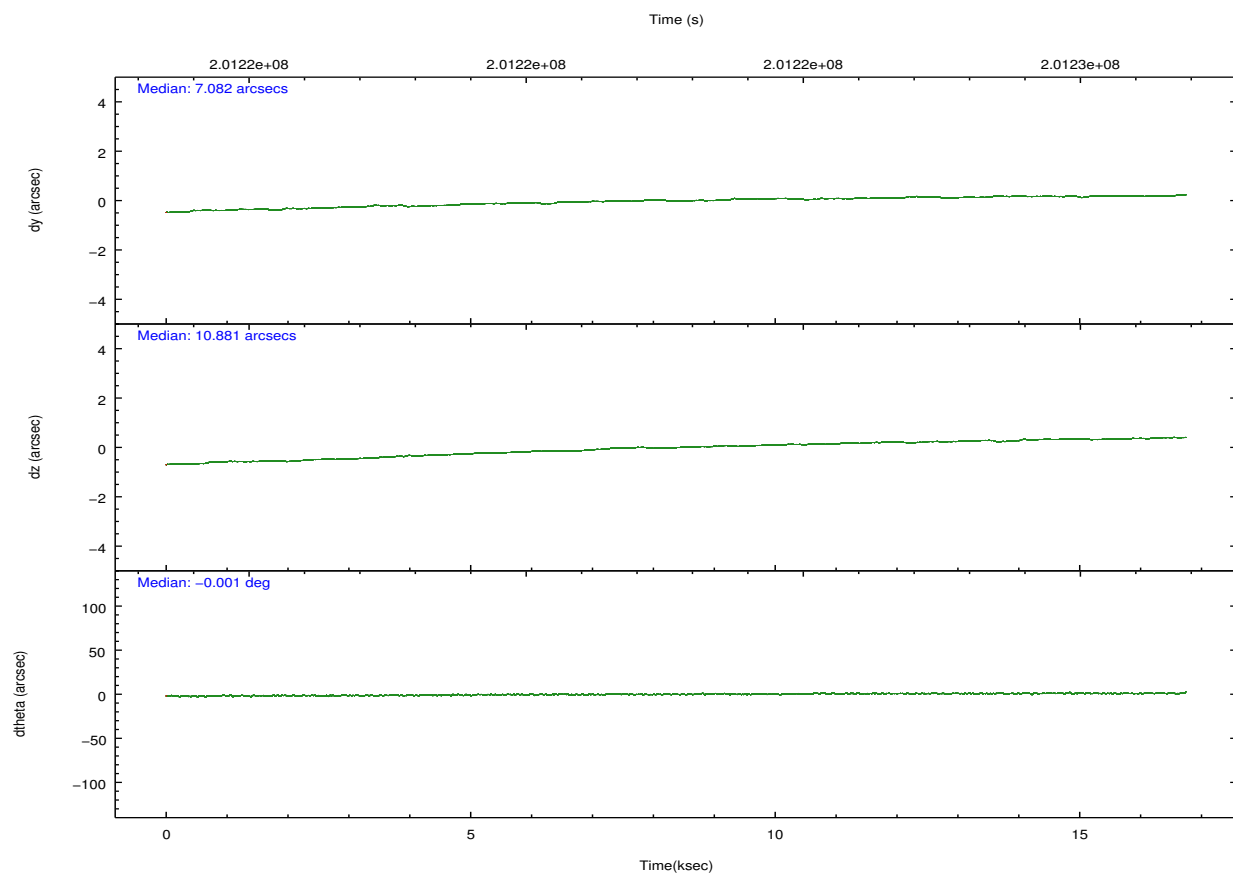
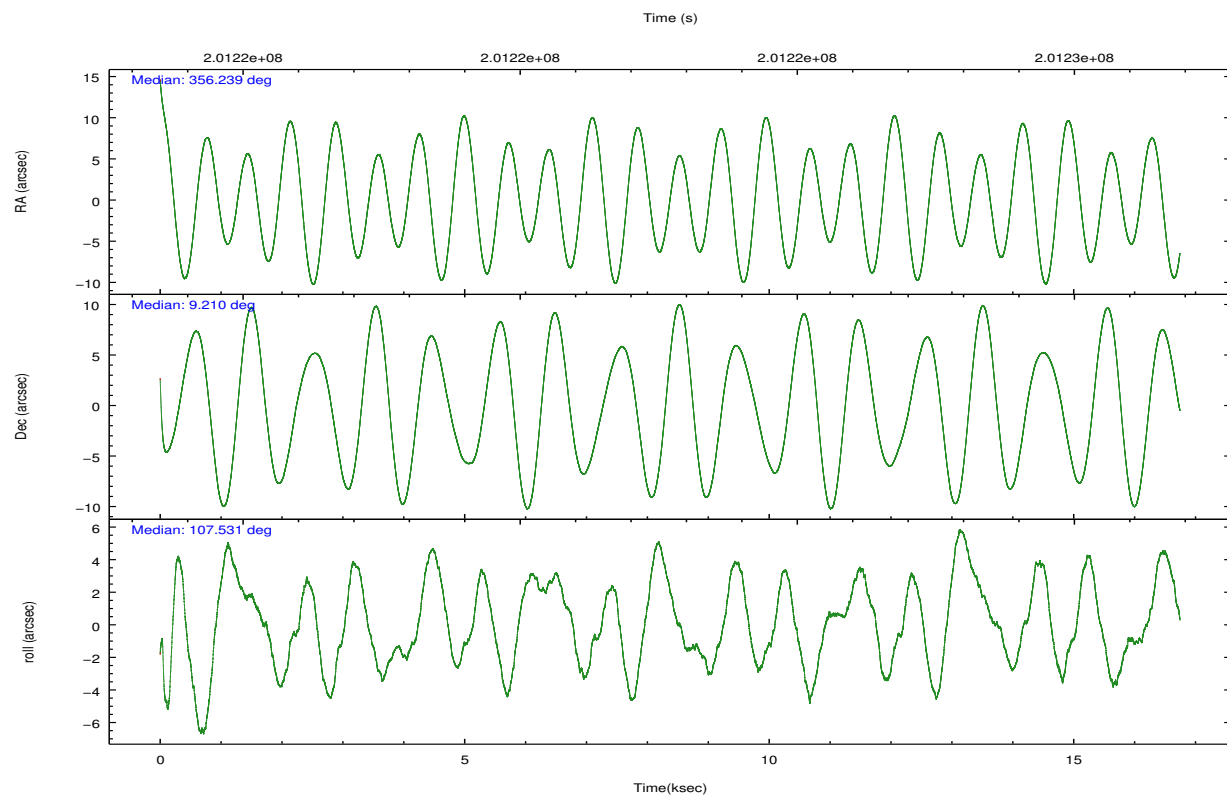
	ccd 0	ccd 1	ccd 2	ccd 3	ccd 6
grade 0 events	8352	12252	11148	19150	3696
	8%	11%	9%	15%	3%
grade 1 events	61	74	98	140	45
	0%	0%	0%	0%	0%
grade 2 events	2975	3359	3226	3790	2213
	2%	3%	2%	3%	2%
grade 3 events	1388	1561	1300	1626	1231
	1%	1%	1%	1%	1%
grade 4 events	1227	1575	1381	1618	1226
	1%	1%	1%	1%	1%
grade 5 events	3457	3889	3346	4004	4017
	3%	3%	2%	3%	3%
grade 6 events	2076	2392	2088	2241	2211
	2%	2%	1%	1%	2%
grade 7 events	80656	83167	94553	87643	86387
	80%	76%	80%	72%	85%

2.2 Compared Parameters

Parameter	Planned	Actual	Parameter	Planned	Actual
Instrument	ACIS	ACIS	Obspar format version number	7	7
Detector	ACIS-01236	ACIS-01236	Obspar file type	PREDICTED	ACTUAL
Grating	NONE	NONE	Obspar update status	NONE	UPDATED
Data mode	VFAINT	VFAINT	Number of optional ACIS chips dropped	0	0
Observation mode	POINTING	POINTING	On-chip summing requested	N	N
[deg] Pointing RA	356.259862	356.2393090479884	Subarray requested	NONE	NONE
[deg] Pointing Dec	9.191845	9.210282215261241	Alternating exposures requested	N	N
[deg] Pointing Roll	107.326348	107.5383229054875	[s] Primary exposure time	0.000000	3.1
[mm] SIM focus pos	-0.782348	-0.7809083437167272			
[mm] SIM defocus	0	0.001439871863259334			
[mm] SIM translation stage pos	-233.592463	-233.5874344608287			
[mm] SIM translation stage offset	0	-0.005018542100998502			
[s] Observation start time (MET)	201214489.184000	201213524.93278			
Observation start date	2004-05-17T20:53:45	2004-05-17T20:38:44			
[s] Observation end time (MET)	201231081.184000	201232184.0336			
Observation end date	2004-05-18T01:30:17	2004-05-18T01:49:44			
Read mode	TIMED	TIMED			

2.3 Aspect



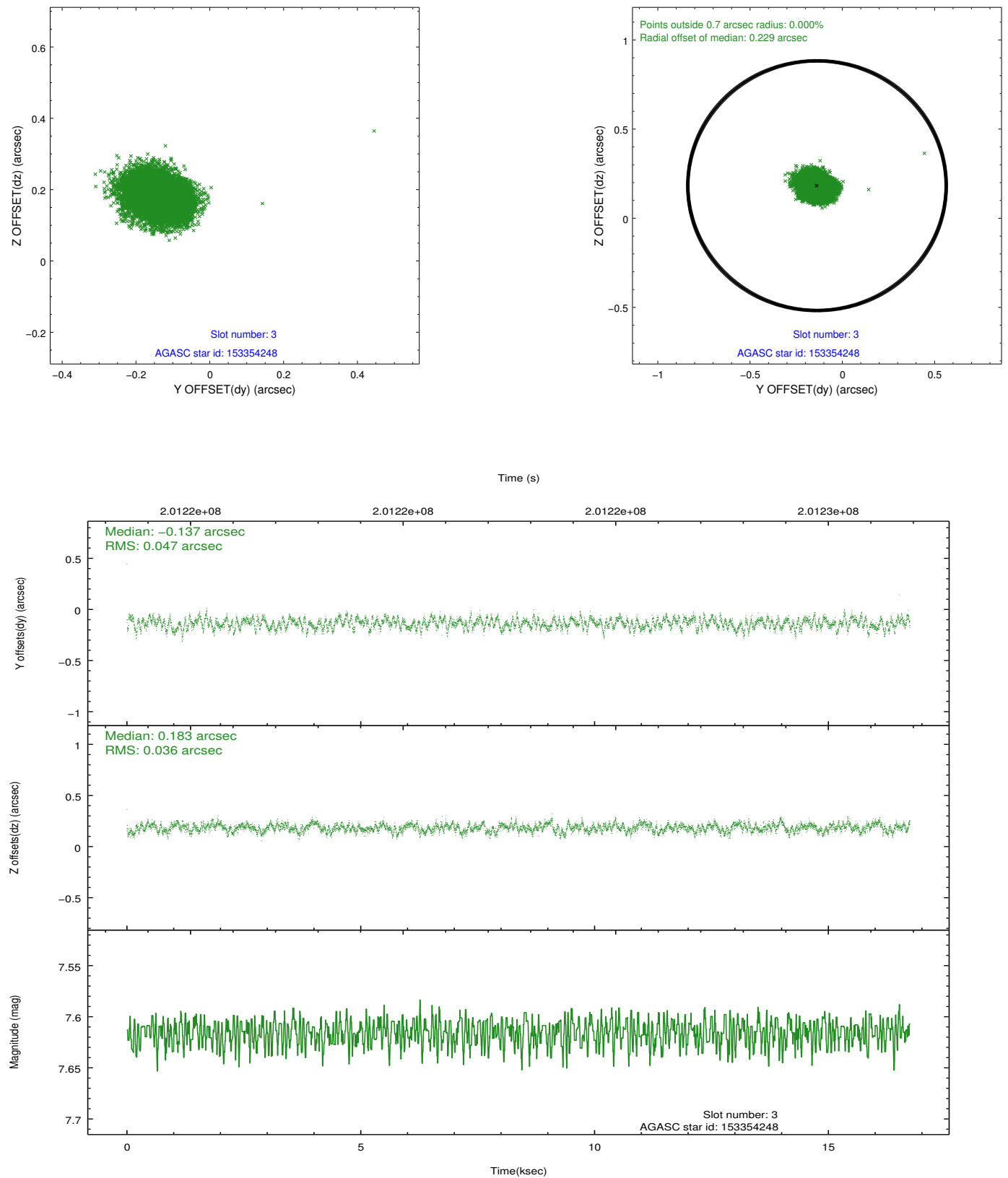


Slot Statistics

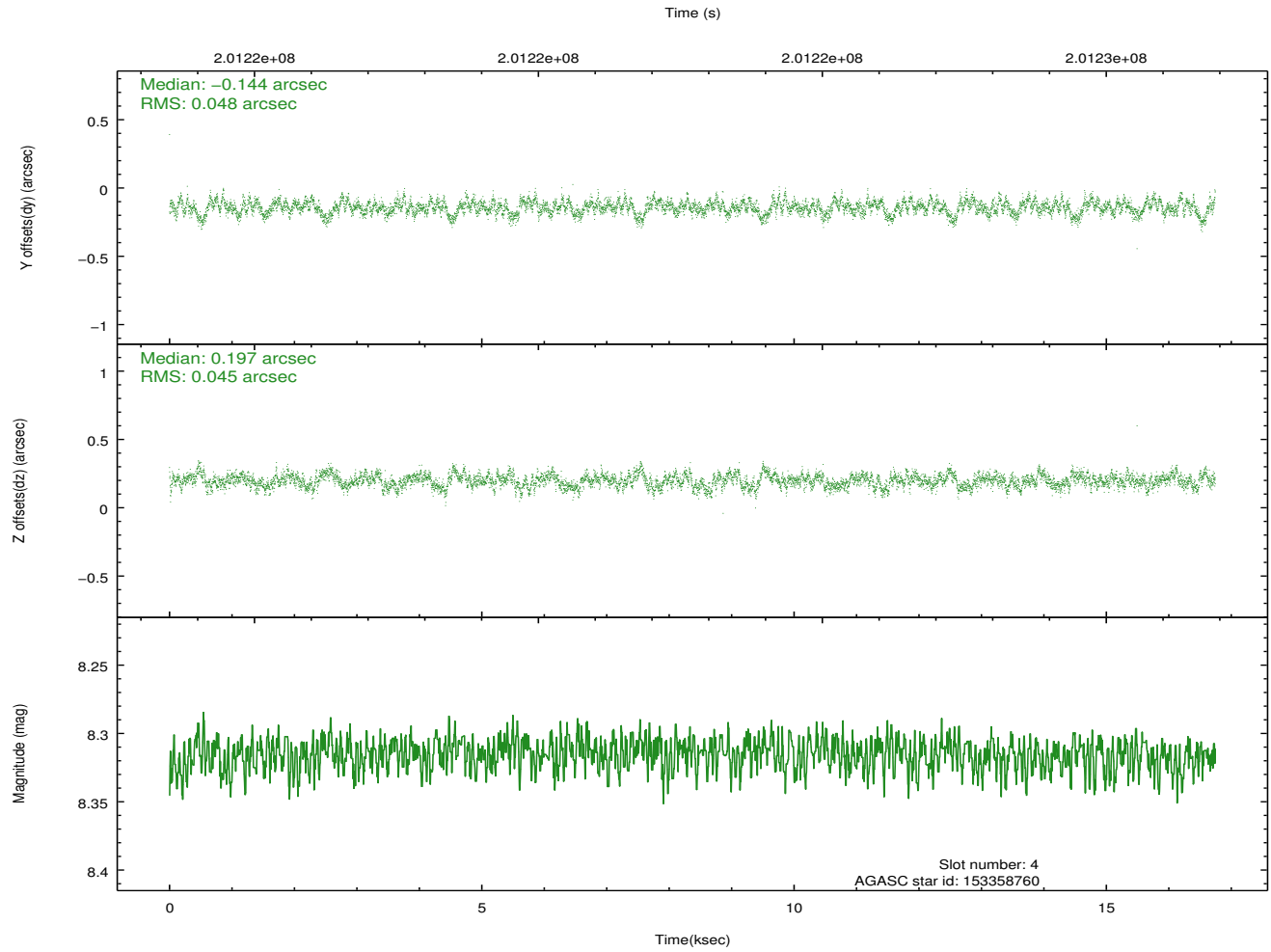
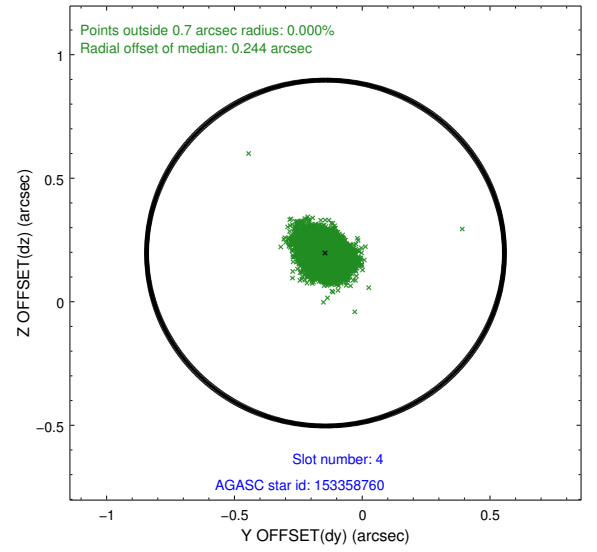
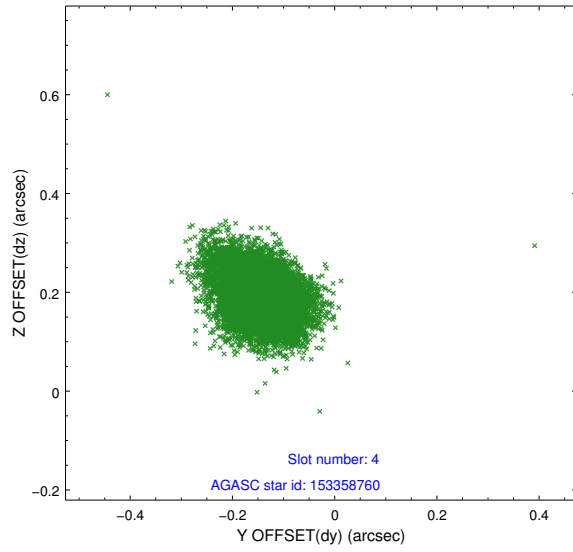
slot	status	id	mag	n_pts	med_dy	med_dz	dr1	dr2	ra	dec	mean_y	mean_z
0	FID	ACIS-I-1	7.24	4084	0.023	-0.006	0.017	0.034	0.000000	0.000000	932.65	-834.33
1	FID	ACIS-I-5	7.23	4085	-0.149	0.044	0.012	0.020	0.000000	0.000000	-1815.46	1063.12
2	FID	ACIS-I-6	7.25	4085	0.036	0.031	0.009	0.016	0.000000	0.000000	397.97	1707.87
3	GUIDE	153354248	7.62	8167	-0.137	0.183	0.064	0.100	356.576457	9.785073	1704.44	-1707.29
4	GUIDE	153358760	8.32	8166	-0.144	0.197	0.069	0.114	356.765278	9.548473	692.99	-2095.40
5	GUIDE	153360112	9.70	8165	0.115	0.077	0.105	0.170	356.410984	8.881808	-1224.92	-180.82
6	GUIDE	153361184	9.77	8161	0.096	-0.202	0.130	0.213	356.028772	8.942994	-610.10	1051.23
7	GUIDE	153362184	10.06	8153	0.072	-0.256	0.111	0.187	356.049778	8.873365	-871.59	1054.78

2.4 Star Slots

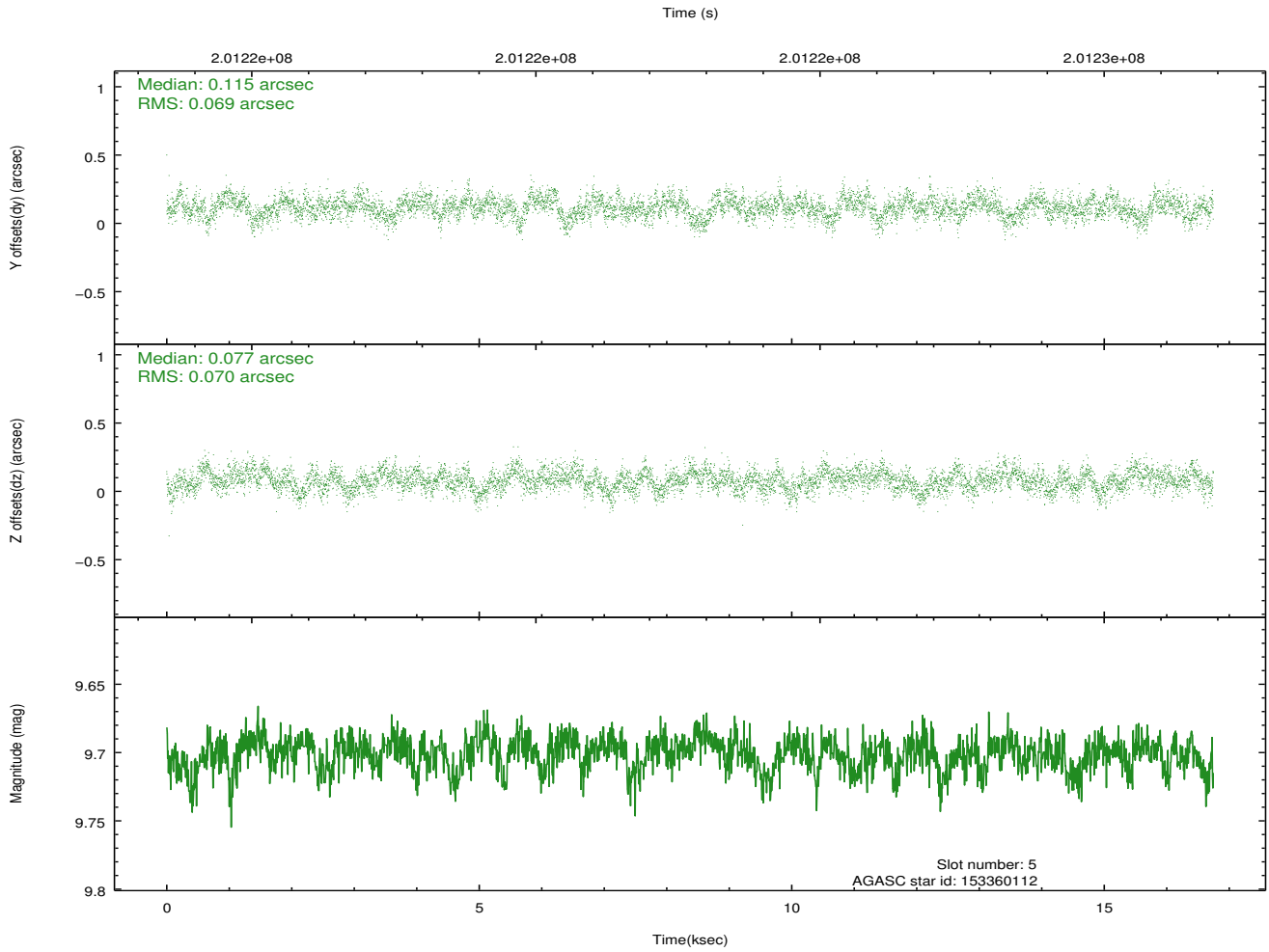
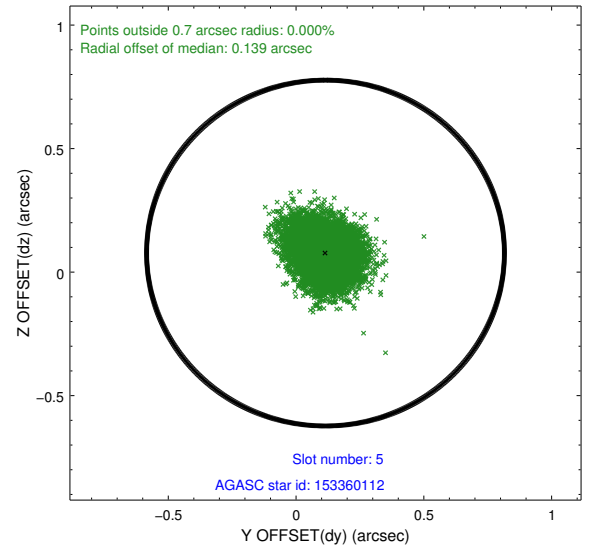
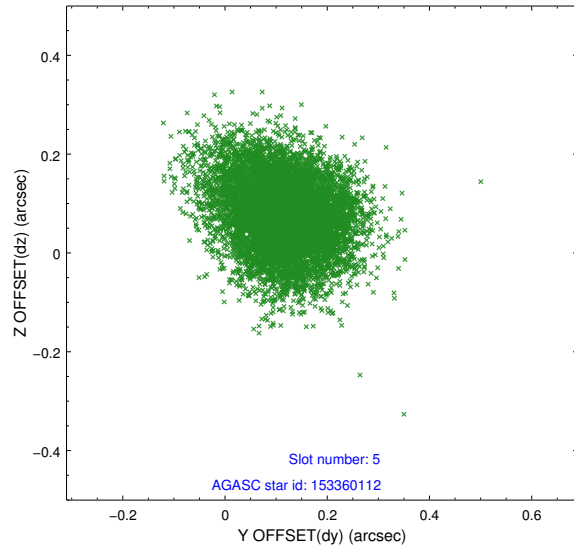
2.4.1 Slot 3



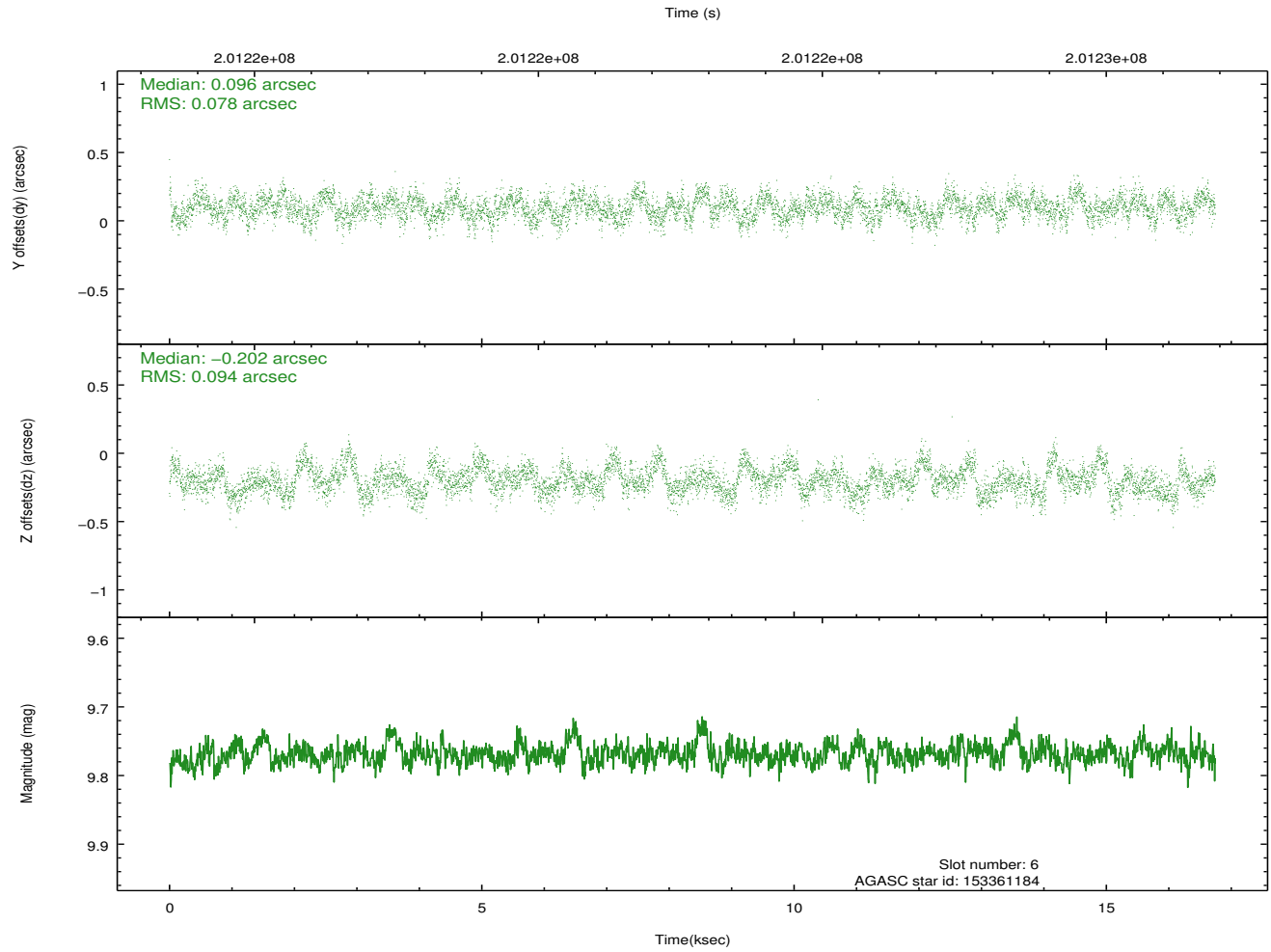
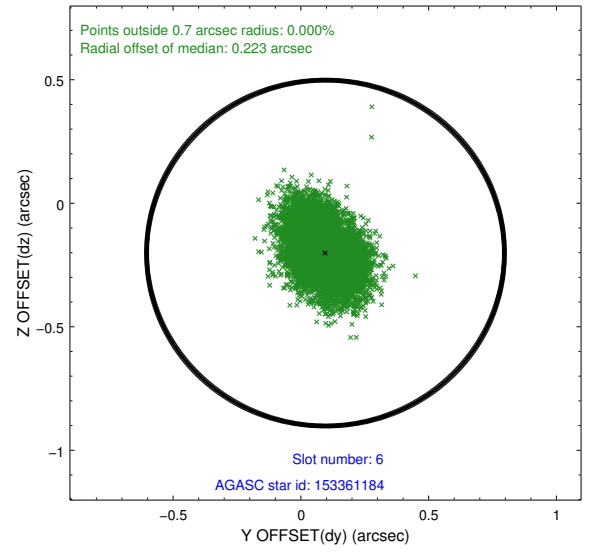
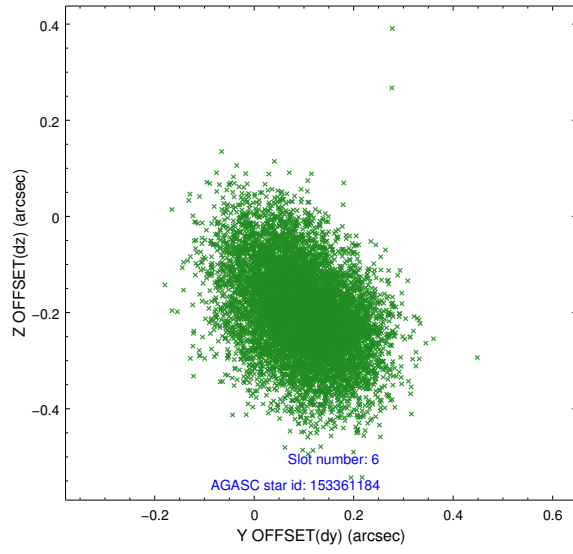
2.4.2 Slot 4



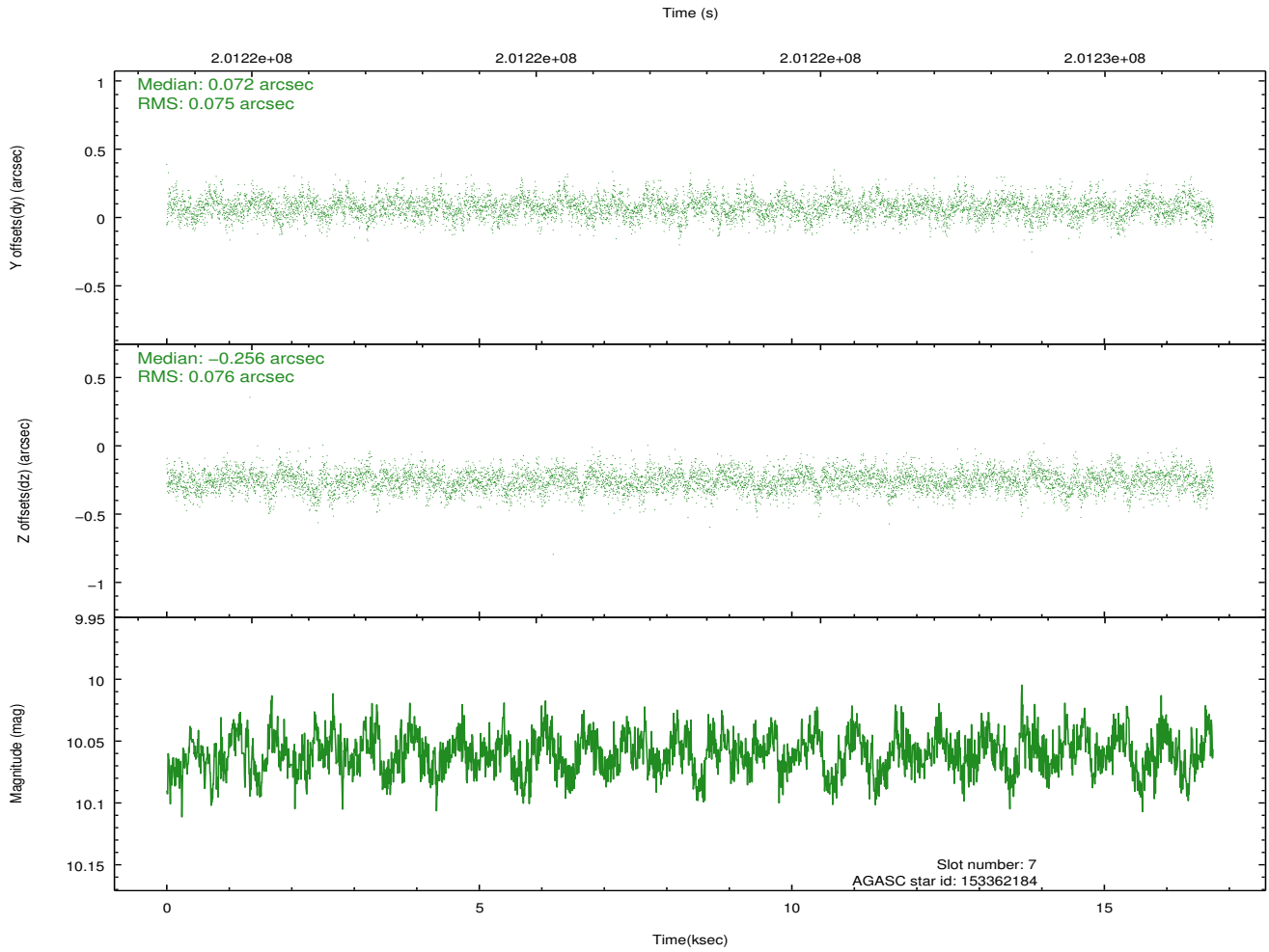
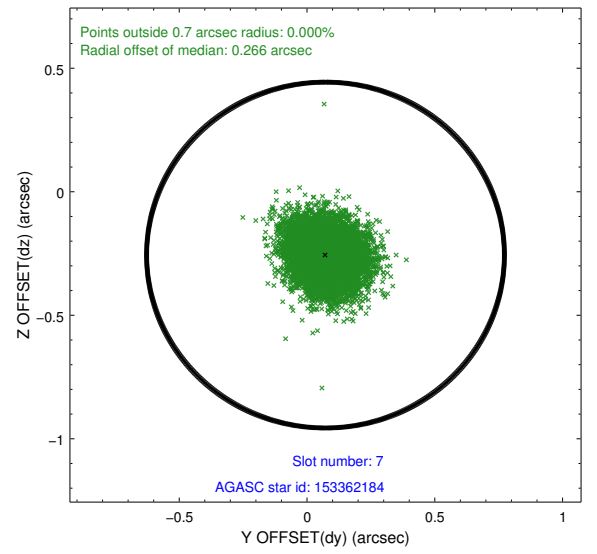
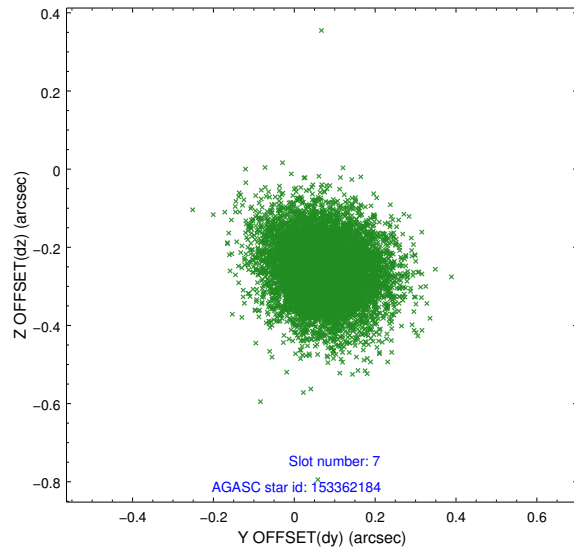
2.4.3 Slot 5



2.4.4 Slot 6

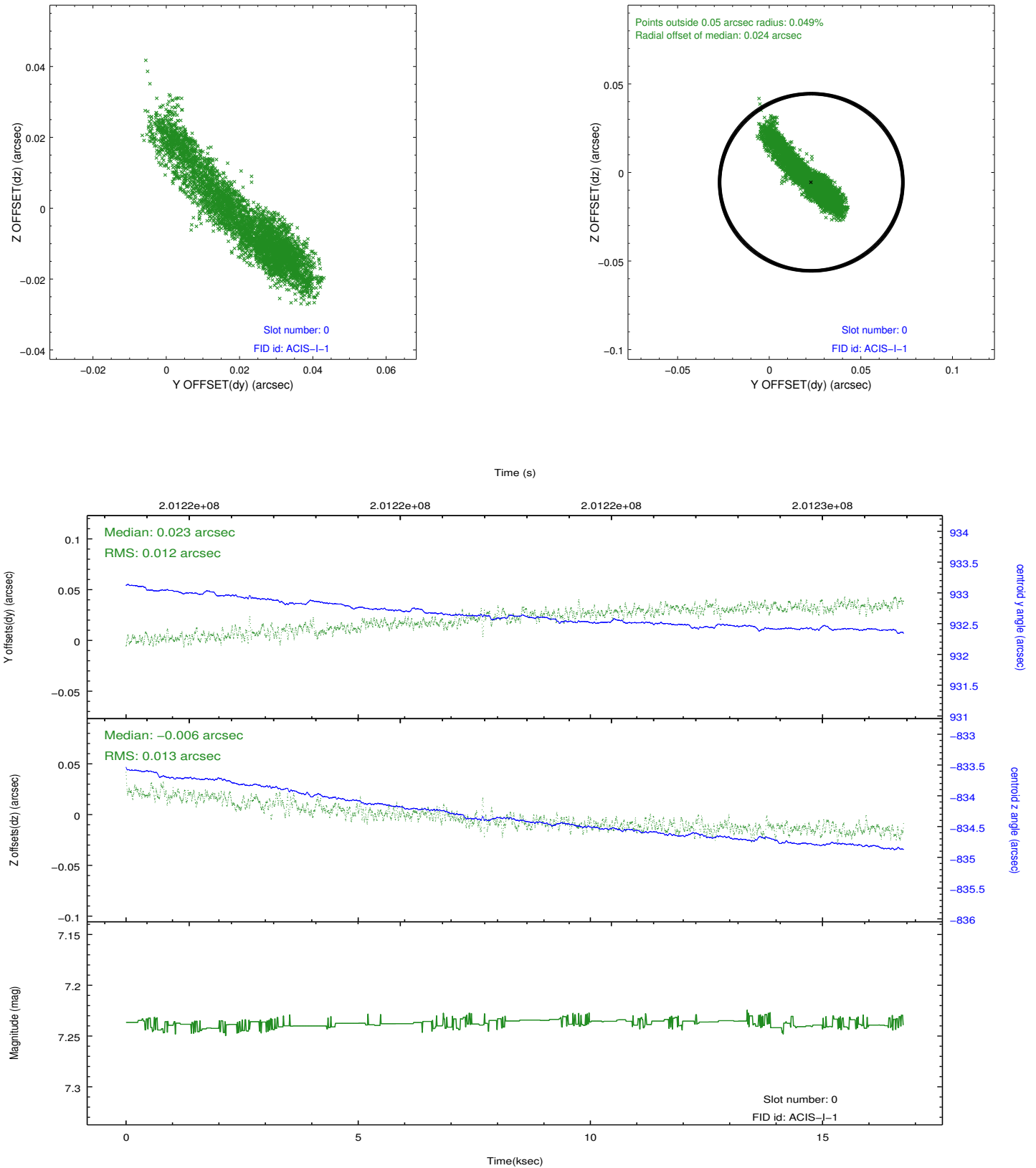


2.4.5 Slot 7

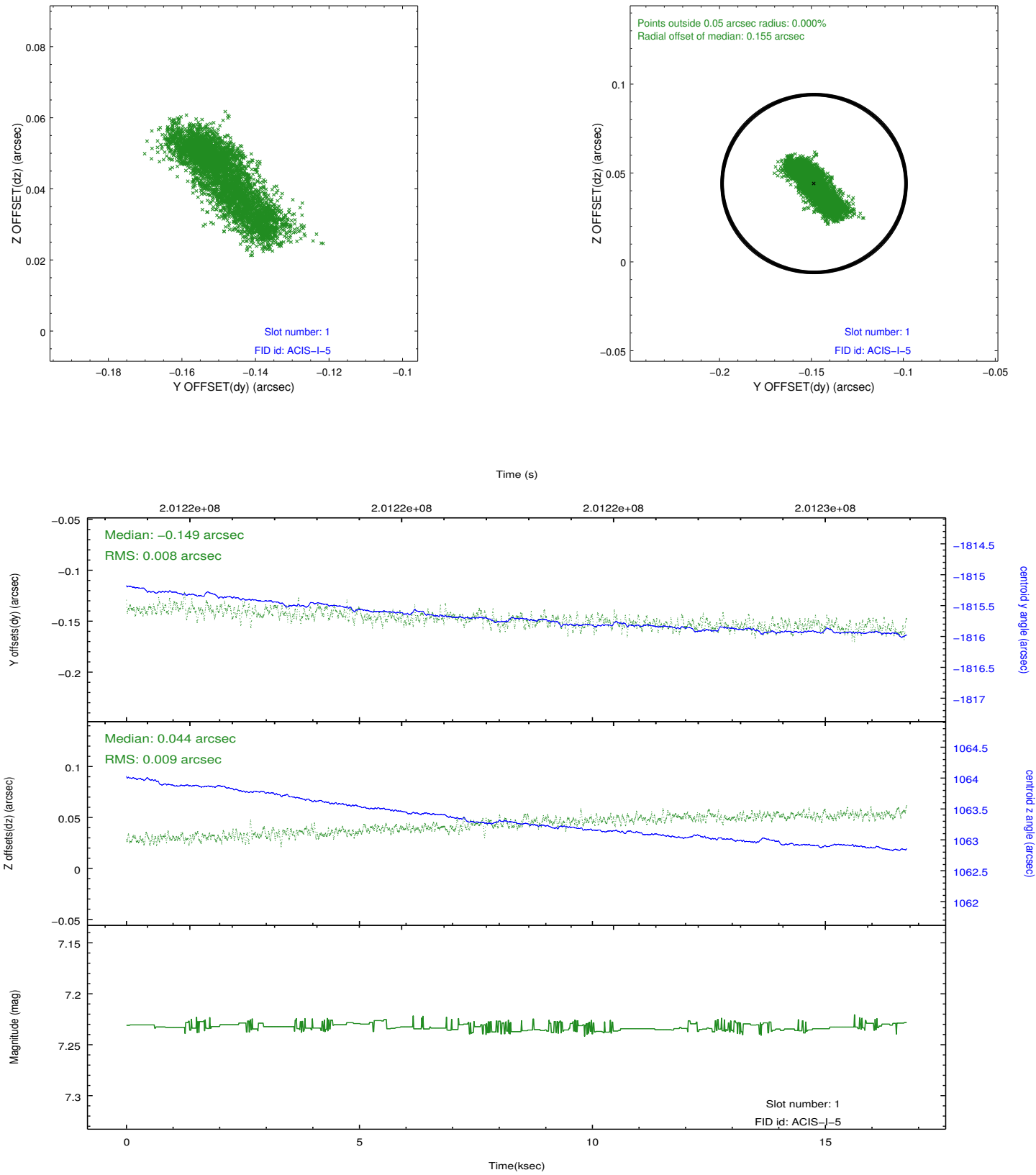


2.5 FID Slots

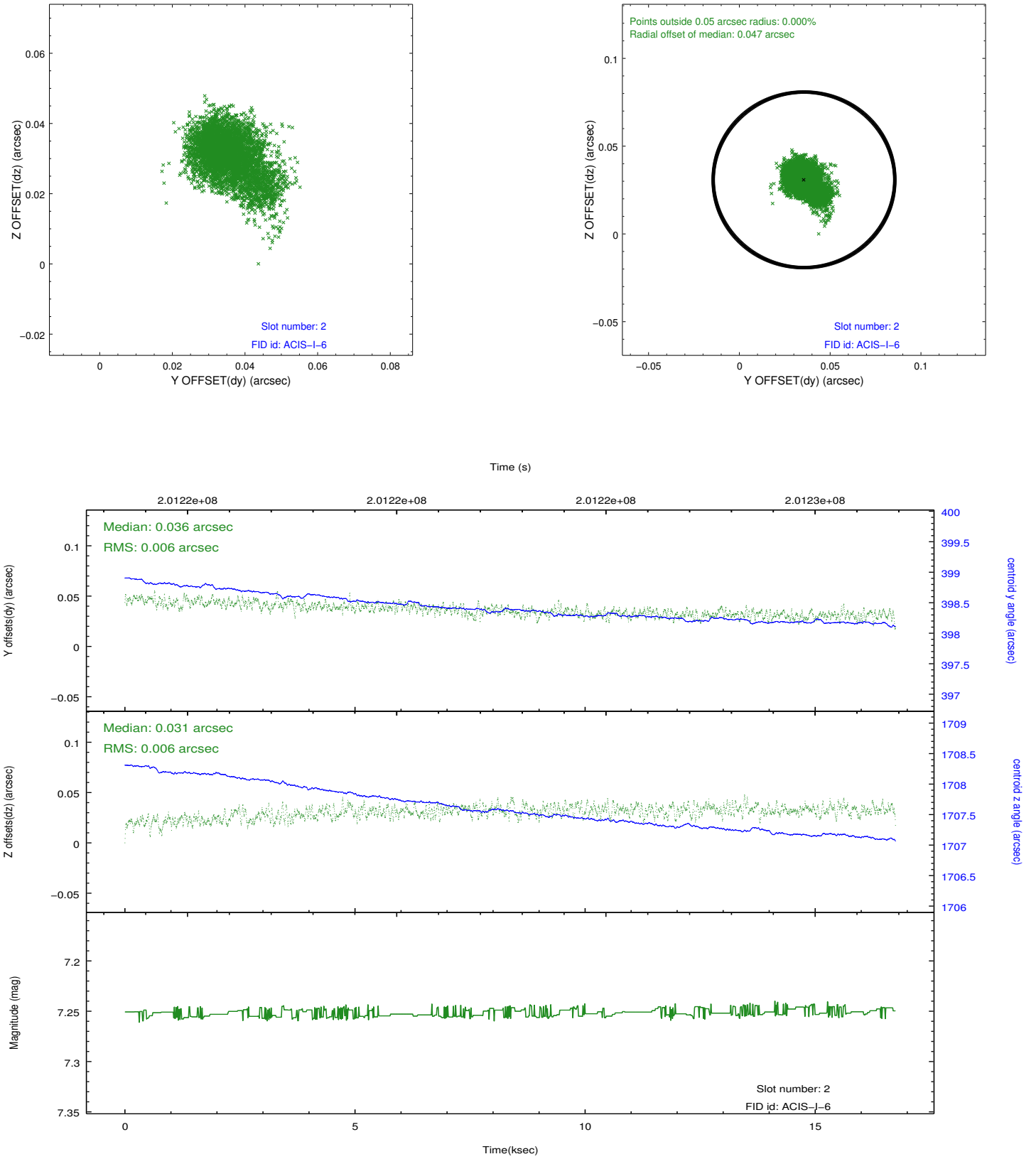
2.5.1 Slot 0



2.5.2 Slot 1



2.5.3 Slot 2



A Summary

A.1 Status

V&V Scientist	Jen Lauer
V&V Date (YYYY-MM-DD)	2012.12.17
V&V Edition	1
V&V Disposition and Status	OK
V&V Charge Time	16.361

A.2 Comments