

V&V Reference Report

L2 ASCDS Version : 7.6.7.2

Observation 4940 - L2 Version 001
Chandra X-Ray Center

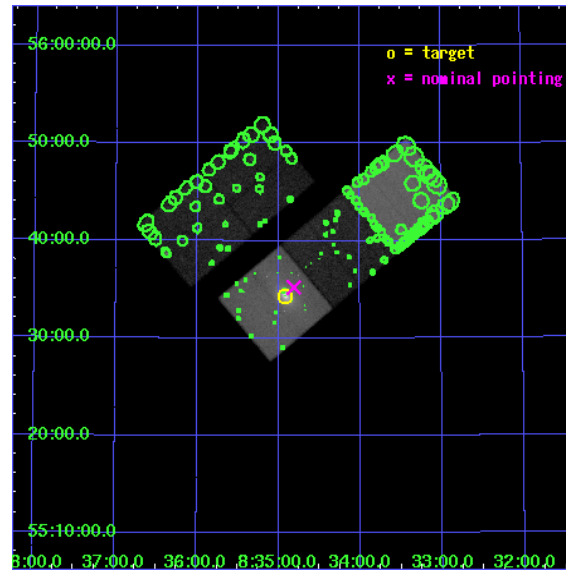
L2 Processing Date : Jun 8 2006

Contents

1	Front	2
2	OBI	3
2.1	OBI	3
2.1.1	Images	3
2.1.2	Bias	3
2.1.3	Parameters	4
2.1.4	Events	4
2.2	Compared Parameters	5
2.3	Aspect	6
2.4	Star Slots	9
2.4.1	Slot 3	9
2.4.2	Slot 4	10
2.4.3	Slot 5	11
2.4.4	Slot 6	12
2.4.5	Slot 7	13
2.5	FID Slots	14
2.5.1	Slot 0	14
2.5.2	Slot 1	15
2.5.3	Slot 2	16
3	Point Sources	17
A	Summary	18
A.1	Status	18
A.2	Comments	18

1 Front

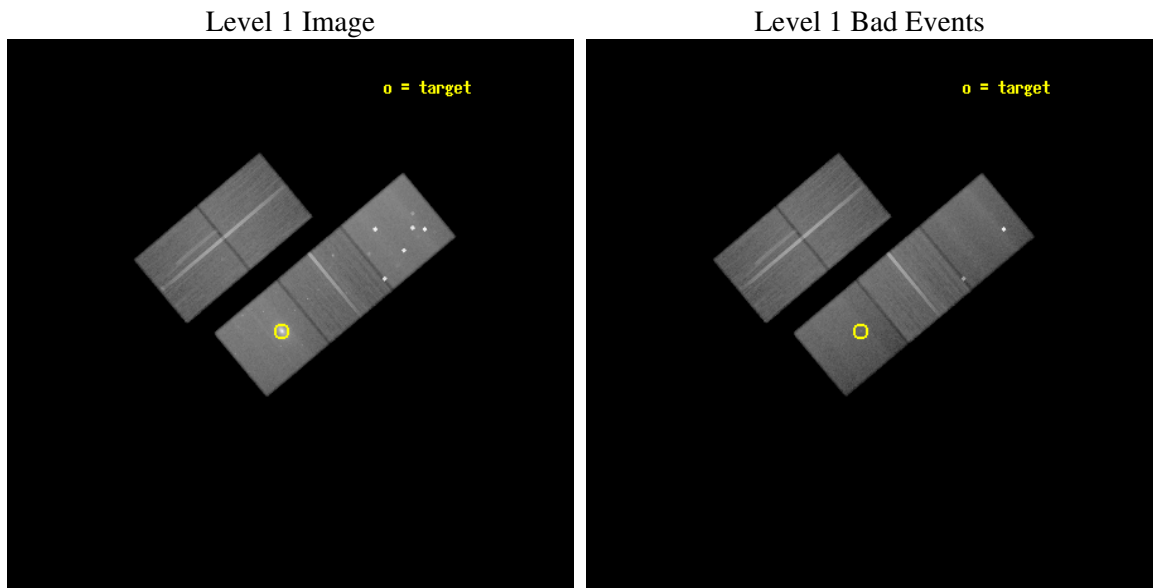
seq_num	800391
obs_id	4940
title	Imaging the iron distribution in the ICM around 4C+55.16
observer	Dr Kazushi Iwasawa
object	4C+55.16
dtcycle	0
cycle	P
ra_targ	128.729167
dec_targ	55.5725
ra_nom	128.70310292135
dec_nom	55.587101965118
roll_nom	140.0324329374
revision	2
ontime	97234.476842284
livetime	95964.036819359
ontime2	97231.335872084
ontime3	97231.335852057
ontime5	97240.758822769
ontime6	97231.335921884
ontime7	97234.476842284
l2events	744250



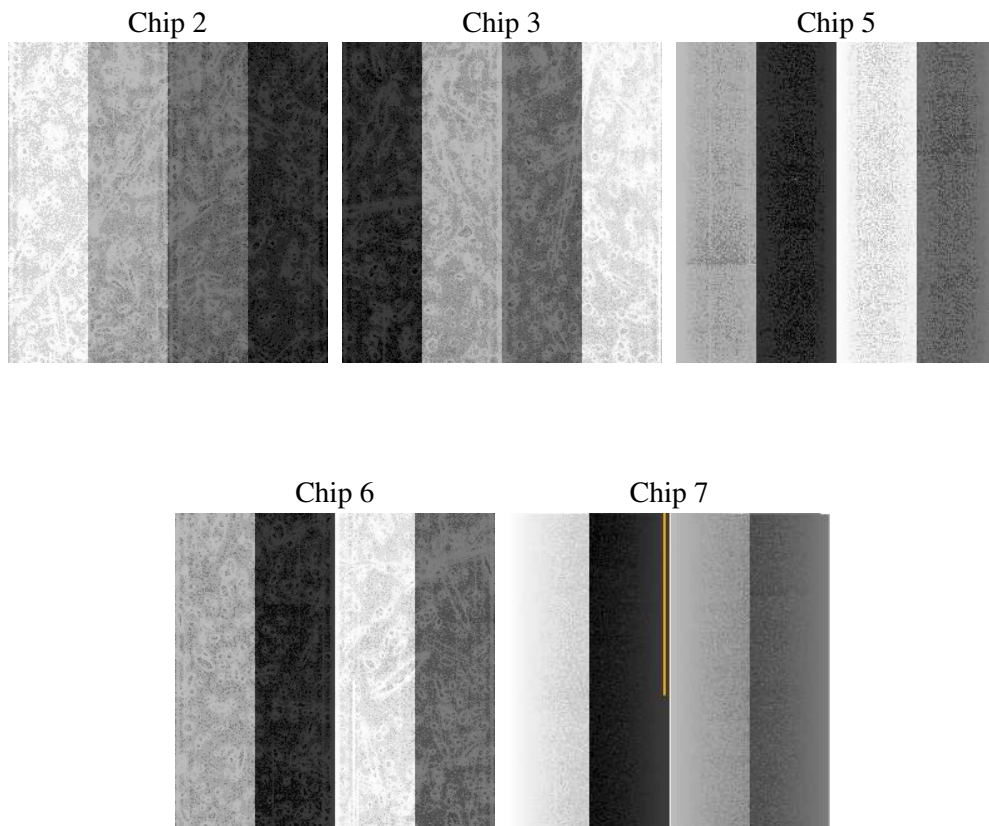
2 OBI

2.1 OBI

2.1.1 Images



2.1.2 Bias



2.1.3 Parameters

obi_num	0
ascdsver	7.6.7.2
caldbver	3.2.2
date	2006-06-08T18:39:07
revision	2

sched_exp_time	97136.207000
ontime	97239.435420156
ontime2	97236.294440061
ontime3	97236.294420034
ontime5	97245.71740064
ontime6	97236.294499755
ontime7	97239.435420156
l1events	2960515

2.1.4 Events

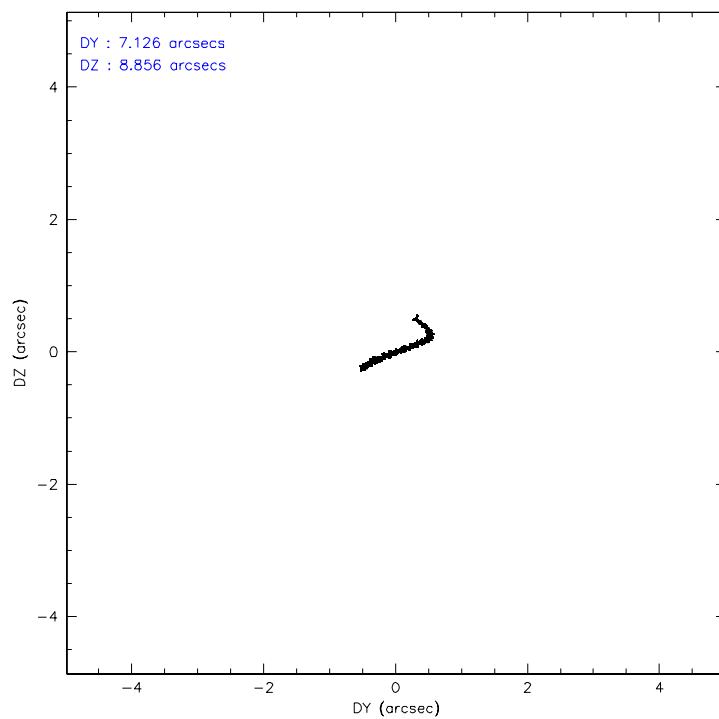
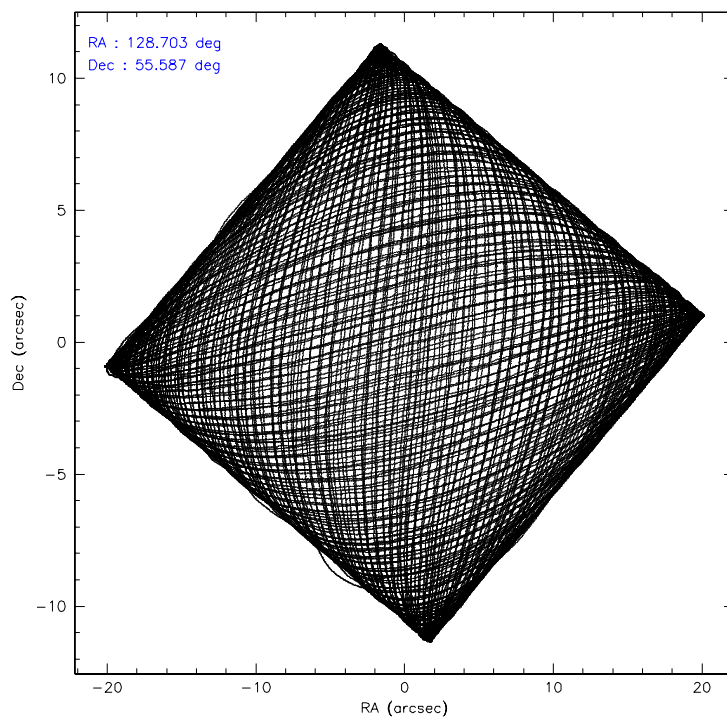
	ccd 2	ccd 3	ccd 5	ccd 6	ccd 7
level 1 events	507692	494935	795325	514954	647609
rejected events	458840	447508	391879	460269	330917
rejected %	90%	90%	49%	89%	51%

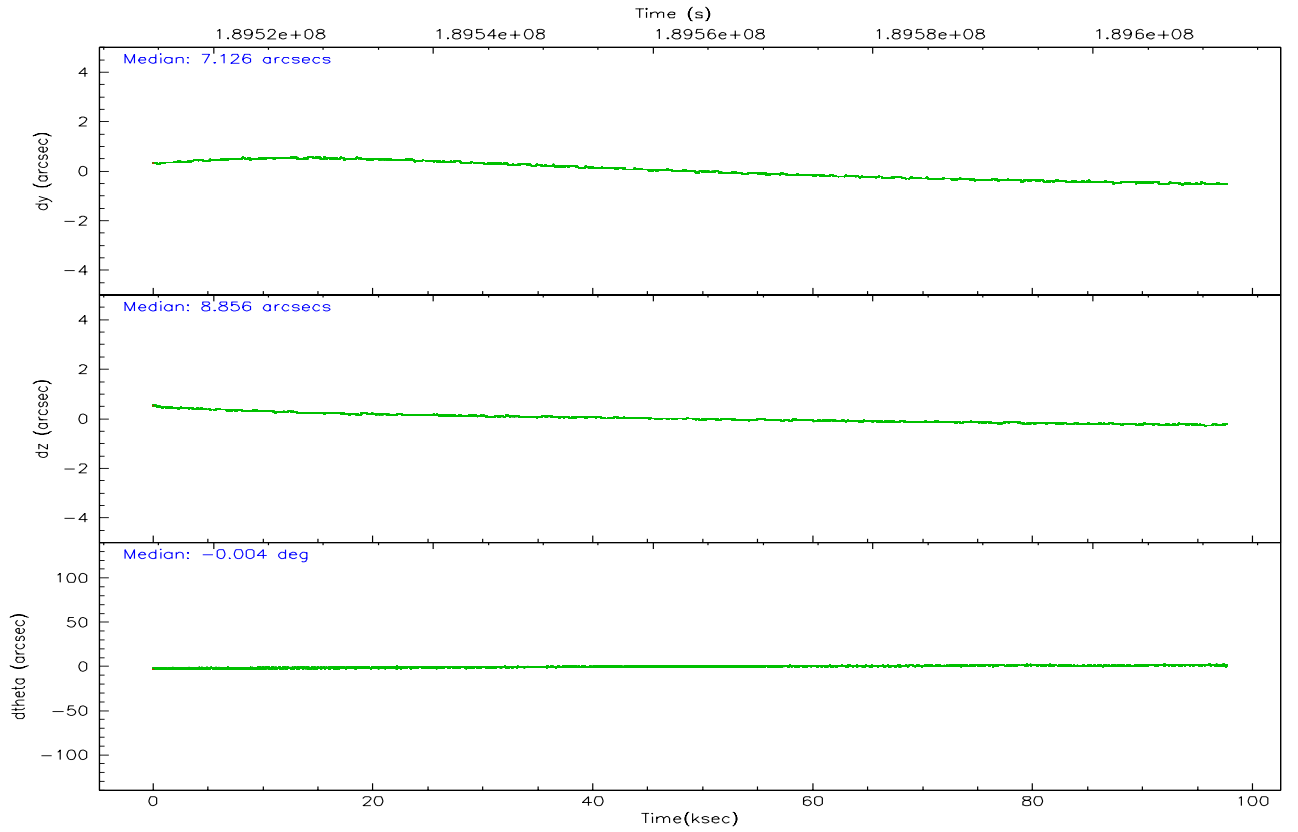
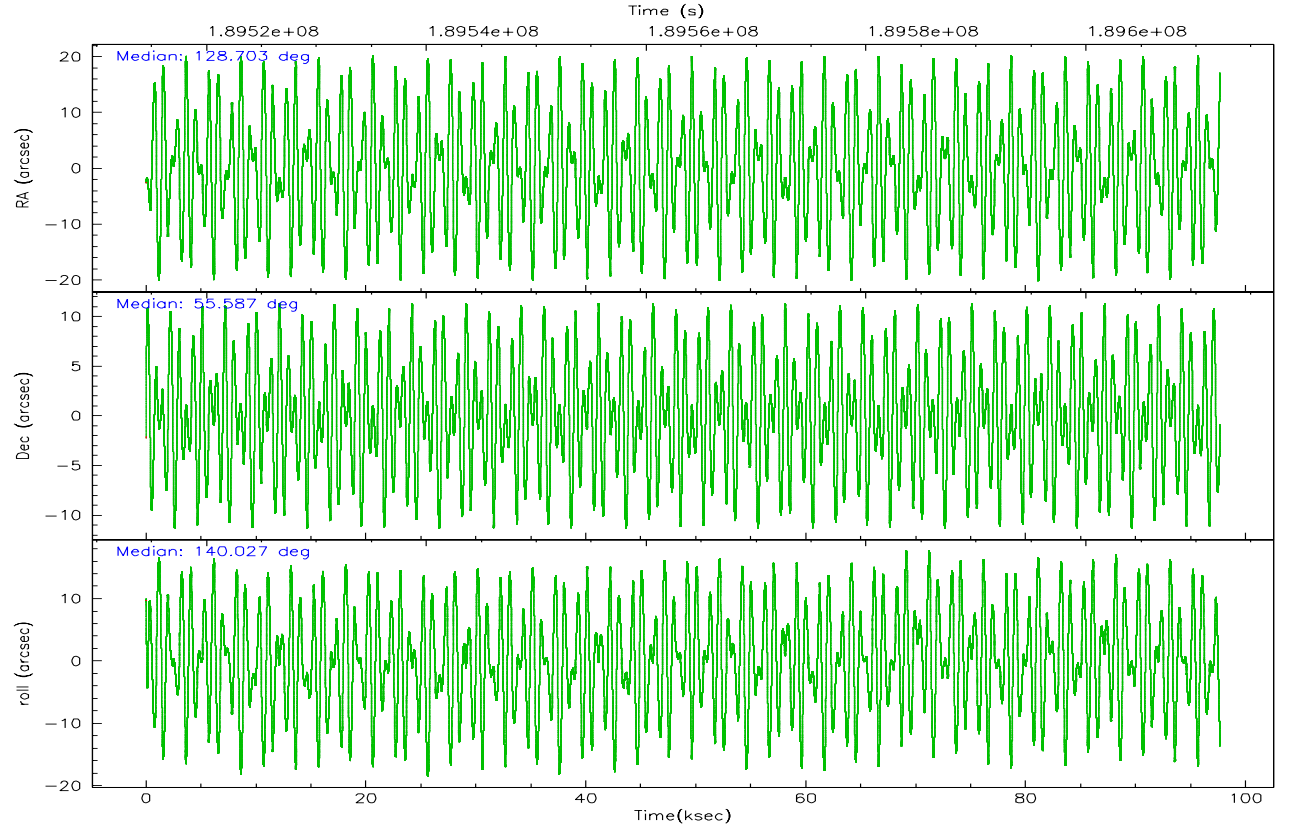
	ccd 2	ccd 3	ccd 5	ccd 6	ccd 7
grade 0 events	17533	17021	84727	20179	37322
	3%	3%	10%	3%	5%
grade 1 events	254	272	864	210	342
	0%	0%	0%	0%	0%
grade 2 events	11098	9917	103031	11187	79589
	2%	2%	12%	2%	12%
grade 3 events	5502	5617	11233	6025	22622
	1%	1%	1%	1%	3%
grade 4 events	5609	5608	8830	5807	21897
	1%	1%	1%	1%	3%
grade 5 events	16181	19757	39392	20352	43085
	3%	3%	4%	3%	6%
grade 6 events	9113	9266	195655	11492	155280
	1%	1%	24%	2%	23%
grade 7 events	442402	427477	351593	439702	287472
	87%	86%	44%	85%	44%

2.2 Compared Parameters

Parameter	Planned	Actual	Parameter	Planned	Actual
Instrument	ACIS	ACIS	Obspar format version number	6	6
Detector	ACIS-23567	ACIS-23567	Obspar file type	PREDICTED	ACTUAL
Grating	NONE	NONE	Obspar update status	NONE	UPDATED
Data mode	VFAINT	VFAINT	On-chip summing requested	N	N
Observation mode	POINTING	POINTING	Subarray requested	NONE	NONE
Pointing RA	128.750640	128.7031029213549	Alternating exposures requested	N	N
Pointing Dec	55.582751	55.58710196511801	Primary exposure time	0.000000	3.1
Pointing Roll	139.836588	140.0324329373976			
SIM focus pos (mm)	-0.684267	-0.6828225247311905			
SIM defocus (mm)	0	0.001444936568705701			
SIM translation stage pos (mm)	-190.132523	-190.1425803651734			
SIM translation stage offset (mm)	0	0.01005778216563158			
Observation start time	189515064.184000	189513916.63215			
Observation start date	2004-01-03T11:03:20	2004-01-03T10:45:16			
Observation end time	189612200.184000	189612514.97394			
Observation end date	2004-01-04T14:02:16	2004-01-04T14:08:34			
Read mode	TIMED	TIMED			

2.3 Aspect



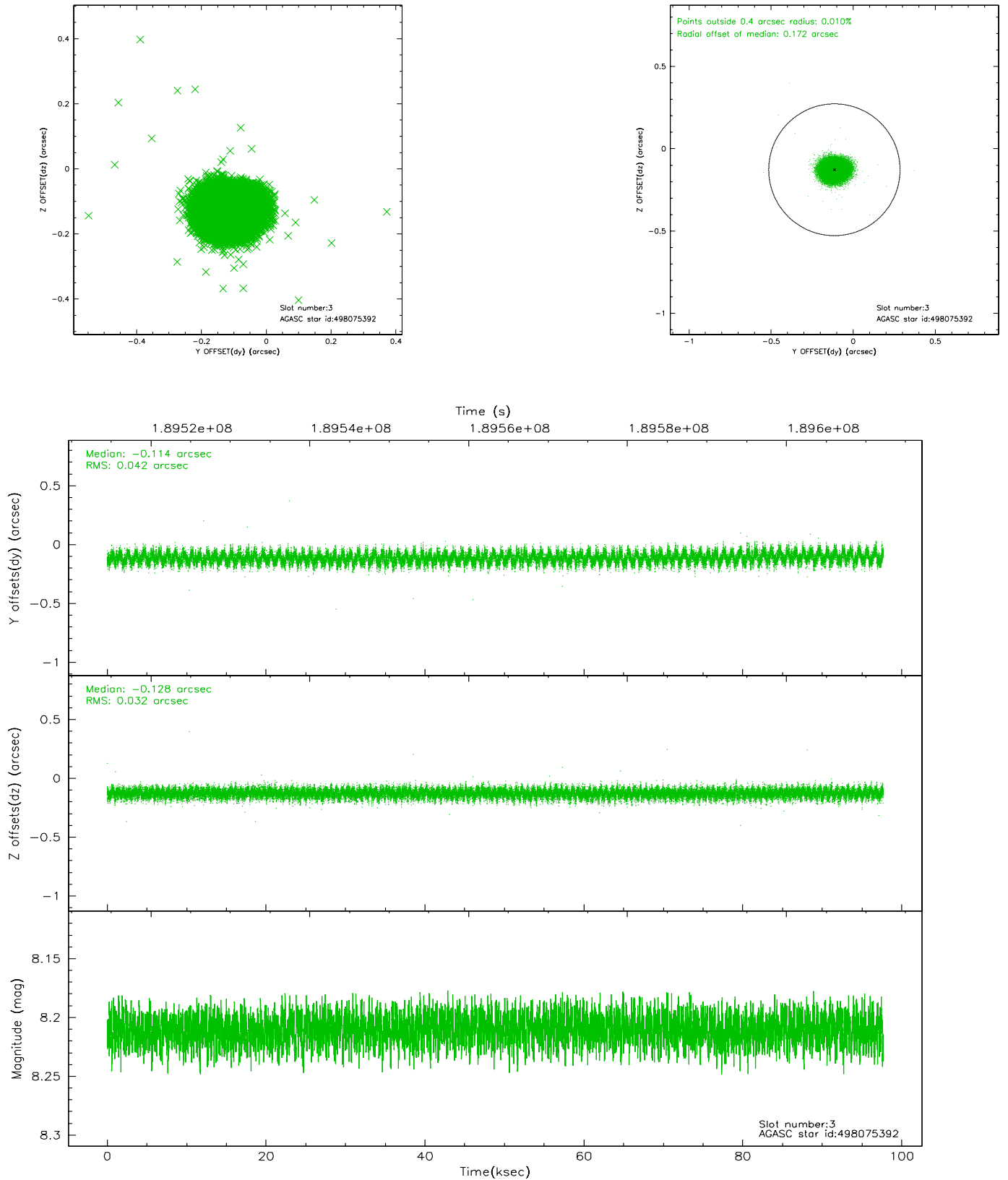


Slot Statistics

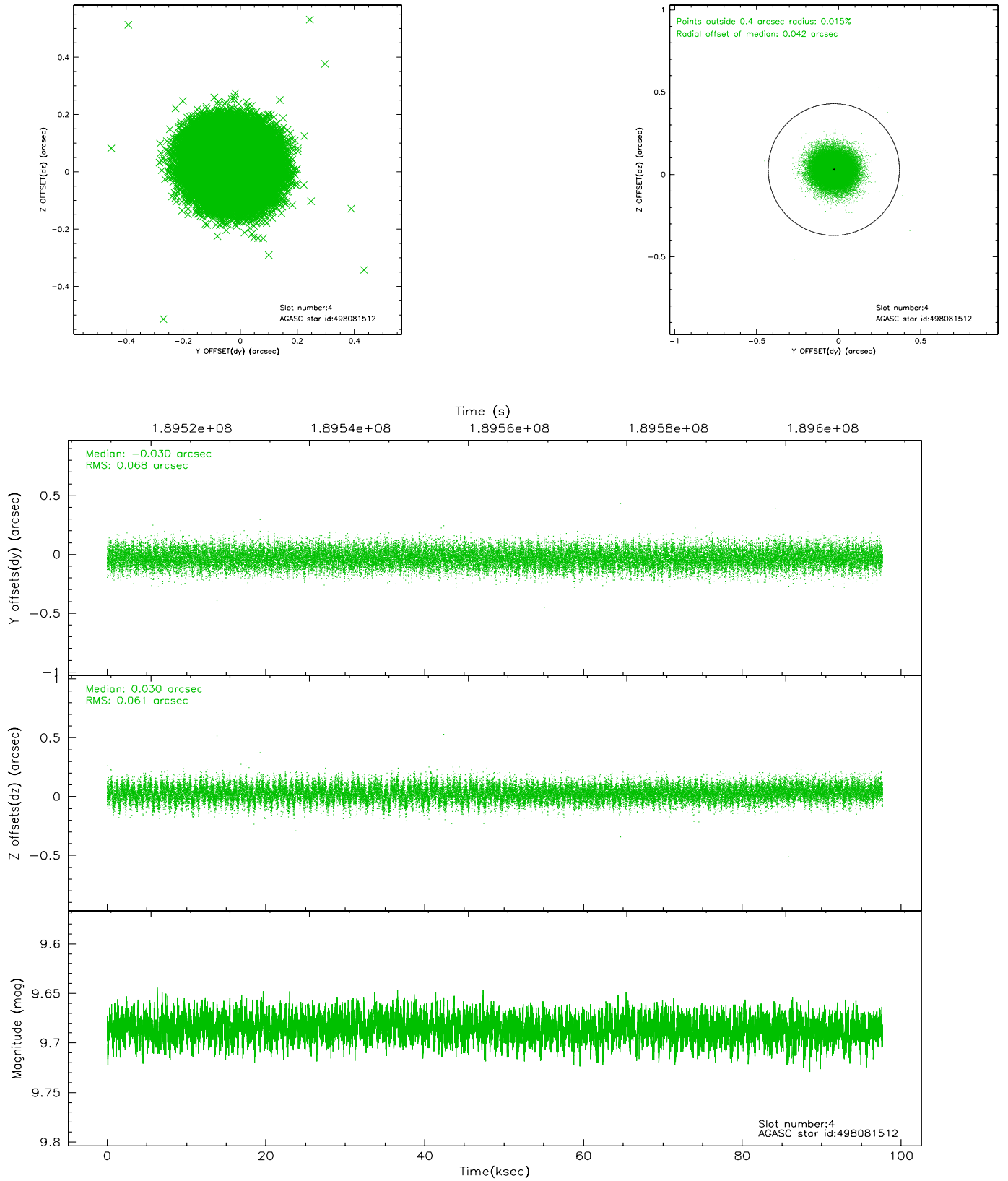
slot	status	id	mag	n_pts	med_dy	med_dz	dr1	dr2	ra	dec	mean_y	mean_z
0	FID	ACIS-S-2	7.10	23825	-0.009	-0.012	0.009	0.023	0.000000	0.000000	-759.91	-1730.06
1	FID	ACIS-S-4	7.20	23822	0.020	0.007	0.013	0.021	0.000000	0.000000	2153.43	178.54
2	FID	ACIS-S-5	7.23	23824	-0.042	0.014	0.012	0.018	0.000000	0.000000	-1812.89	172.11
3	GUIDE	498075392	8.21	47642	-0.114	-0.128	0.056	0.090	127.928319	55.776476	1728.58	533.53
4	GUIDE	498081512	9.69	47616	-0.030	0.030	0.098	0.157	127.740416	55.501187	1394.35	1541.73
5	GUIDE	498083896	9.78	47618	-0.015	-0.054	0.110	0.180	128.146499	55.546750	860.29	888.74
6	GUIDE	498206320	7.73	47647	0.073	0.085	0.061	0.097	129.264284	55.839214	-195.09	-1377.95
7	GUIDE	498207064	9.51	47546	0.088	0.074	0.109	0.175	129.027738	55.651865	-268.57	-553.85

2.4 Star Slots

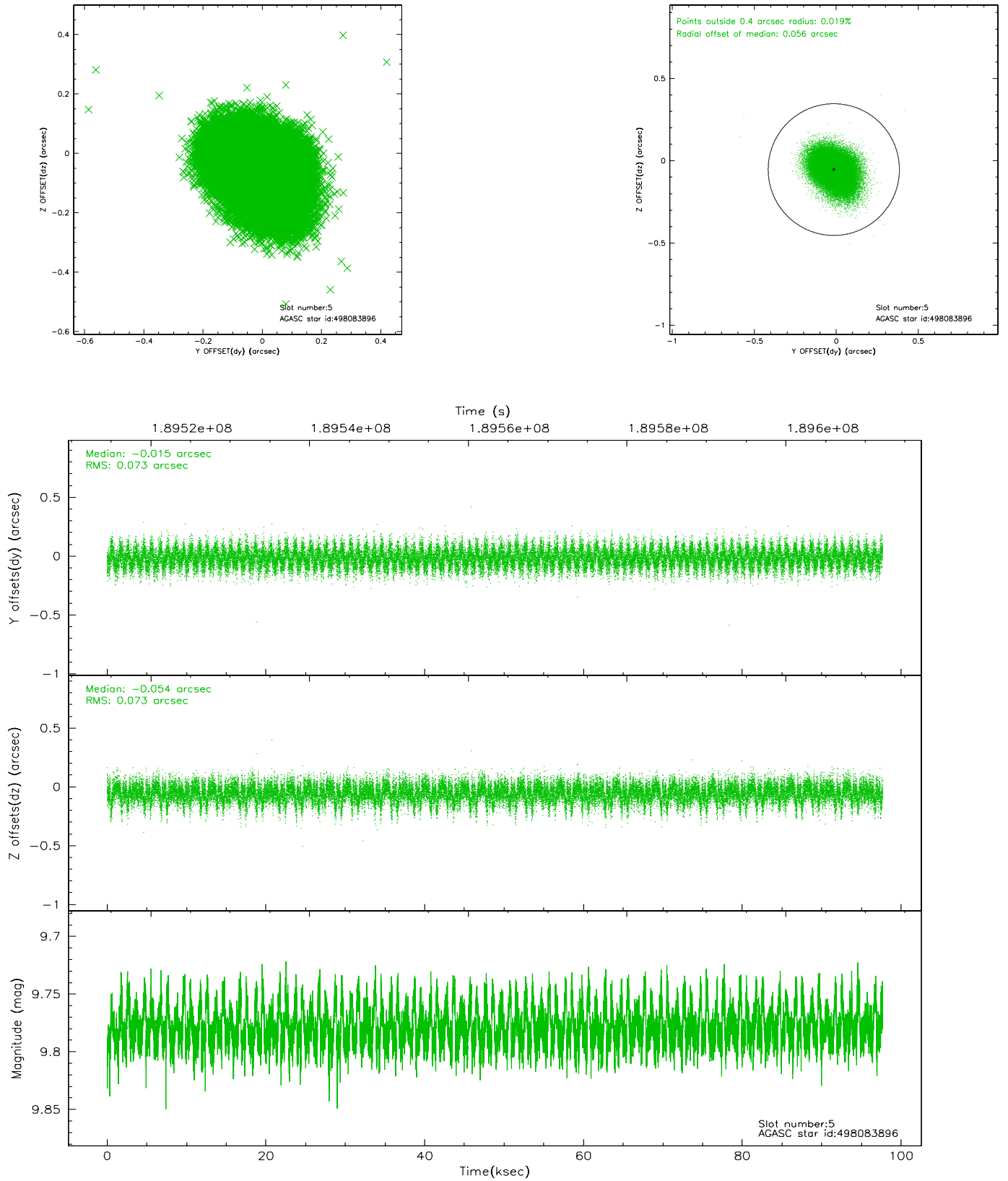
2.4.1 Slot 3



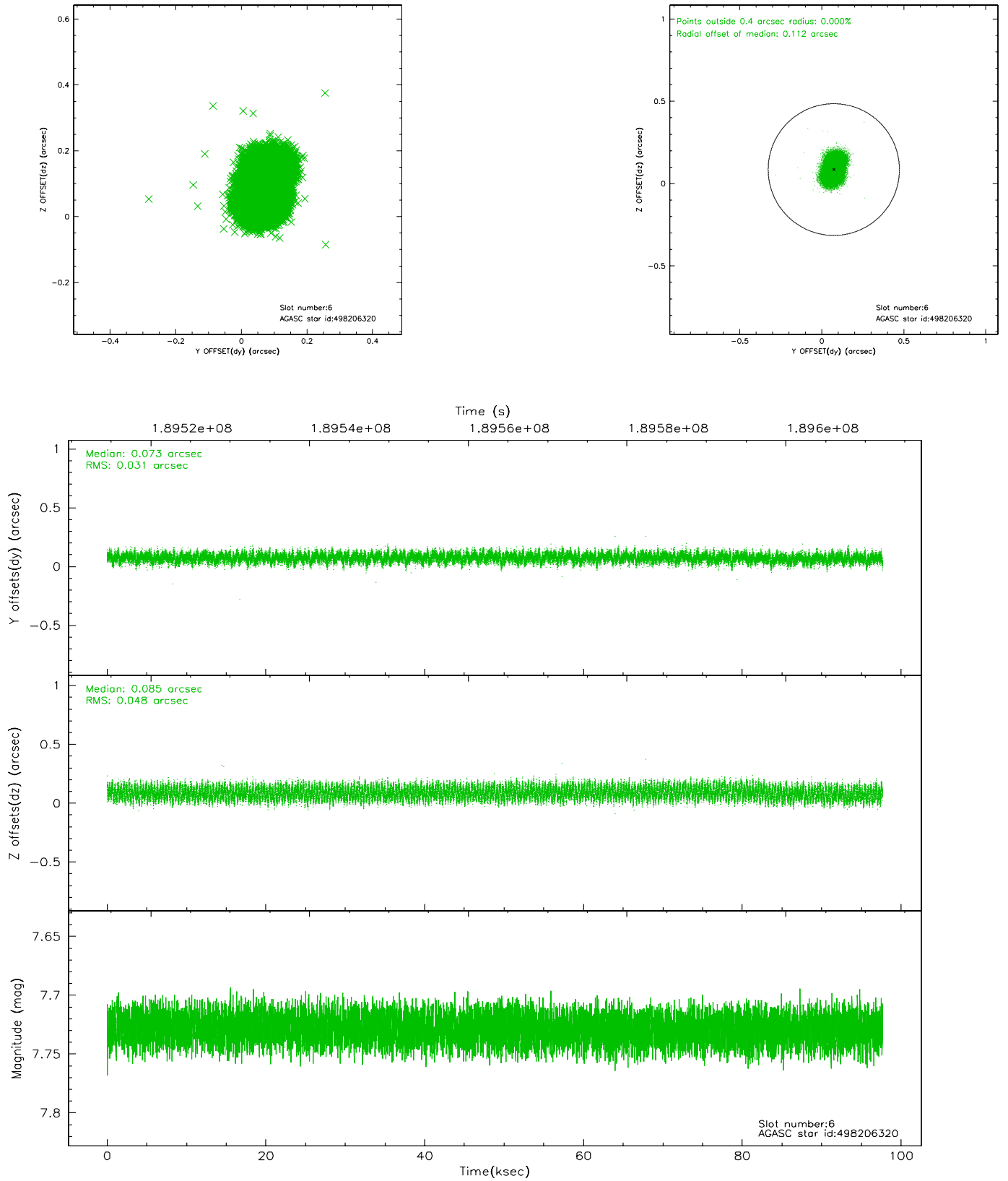
2.4.2 Slot 4



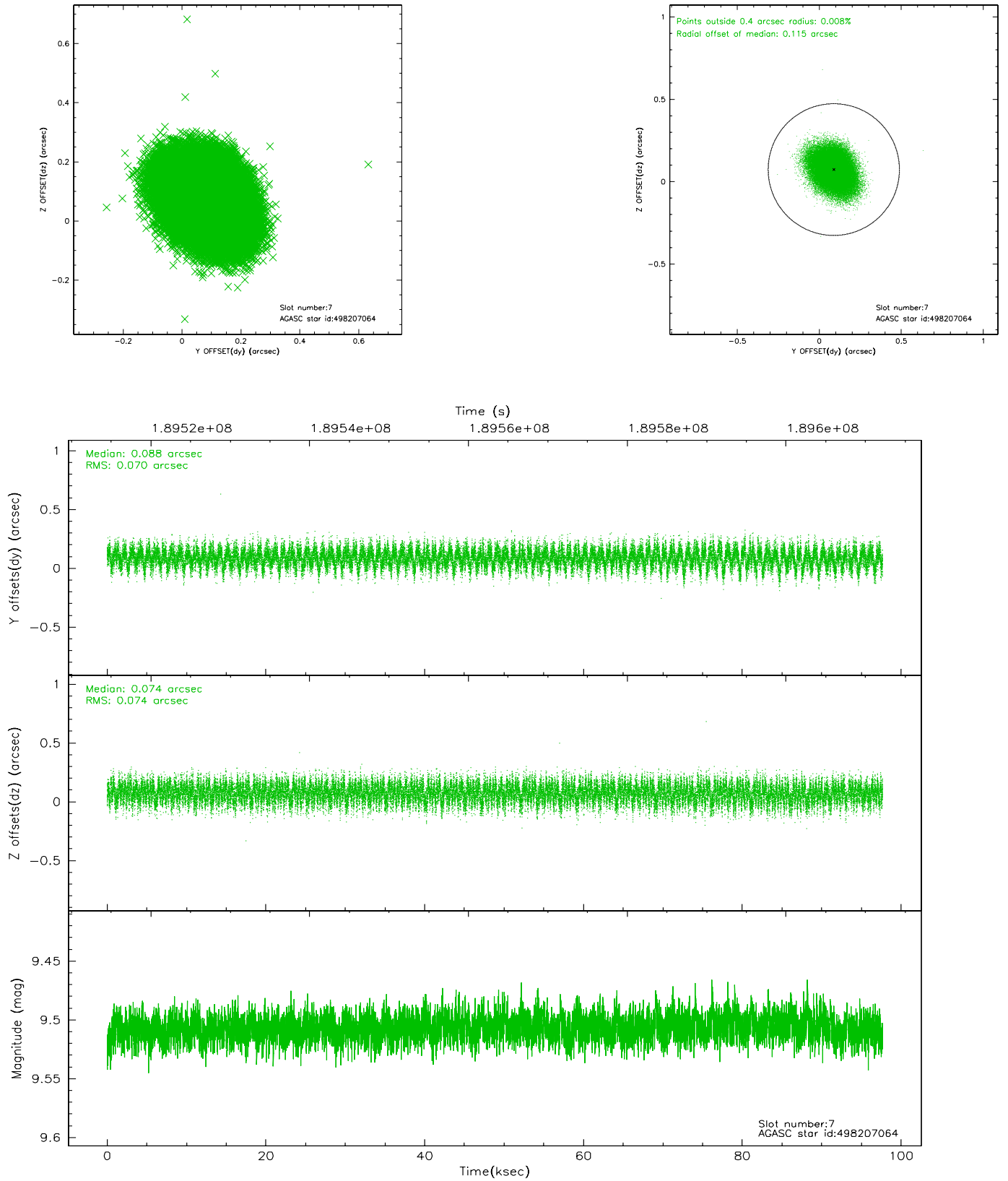
2.4.3 Slot 5



2.4.4 Slot 6

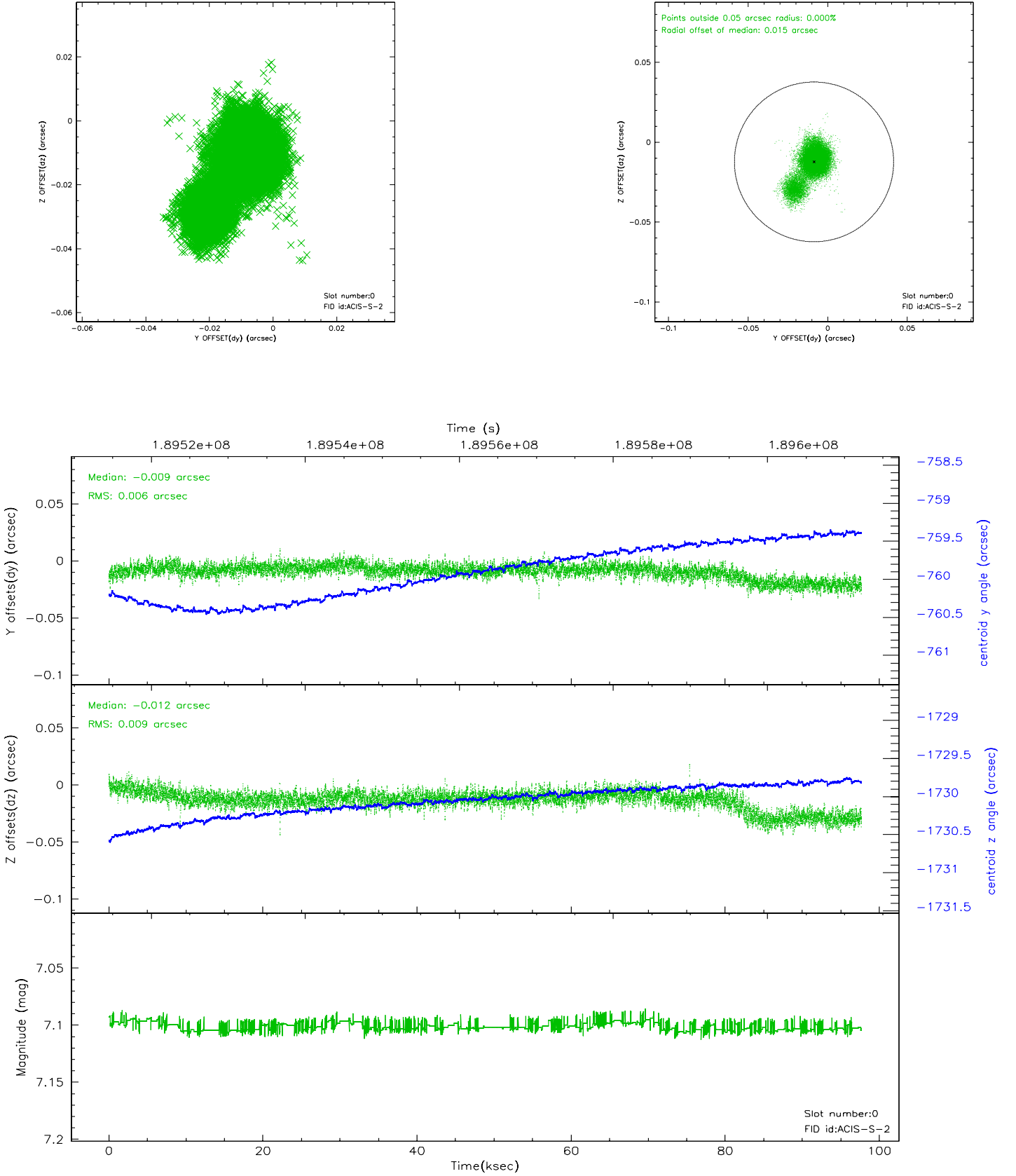


2.4.5 Slot 7

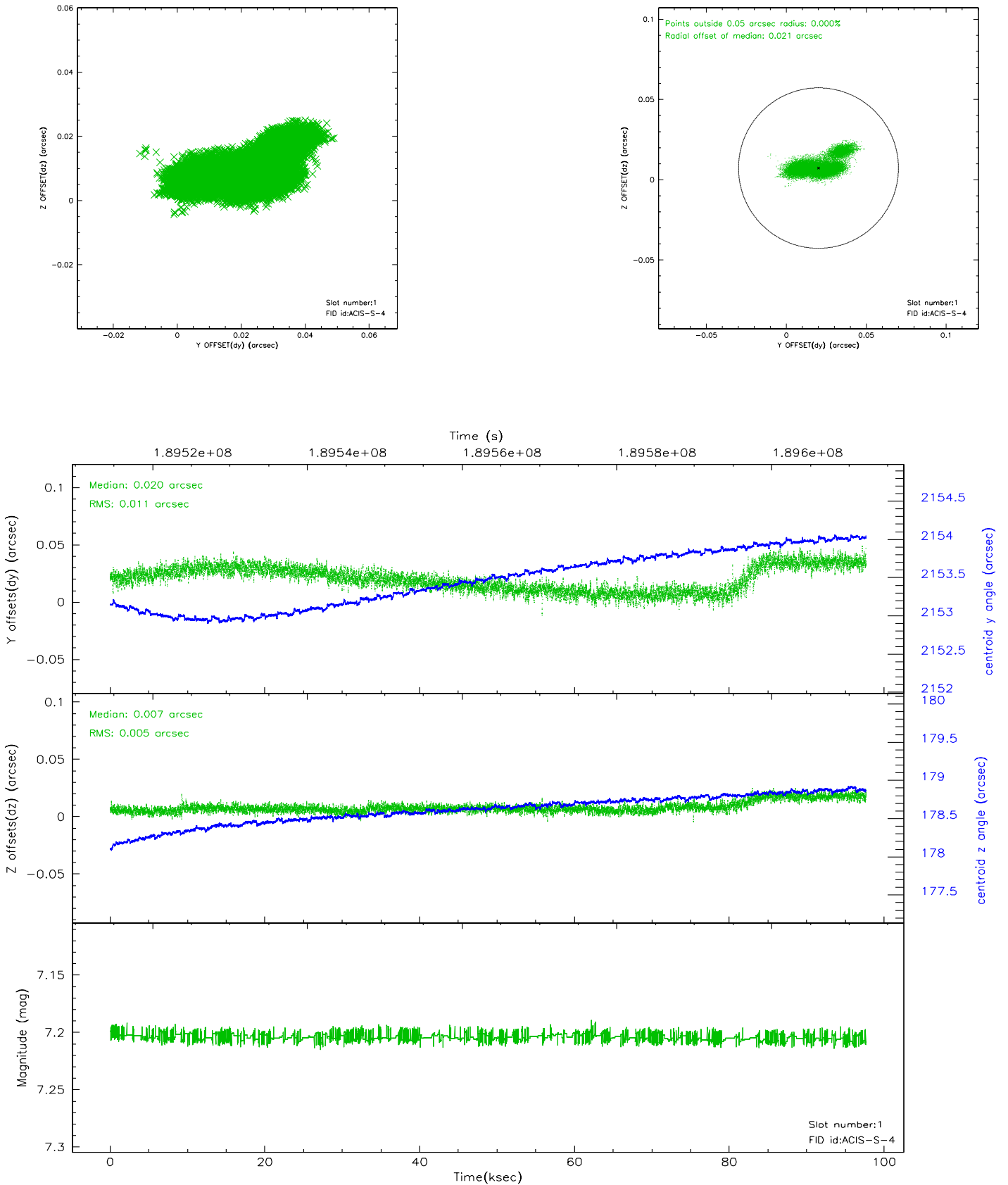


2.5 FID Slots

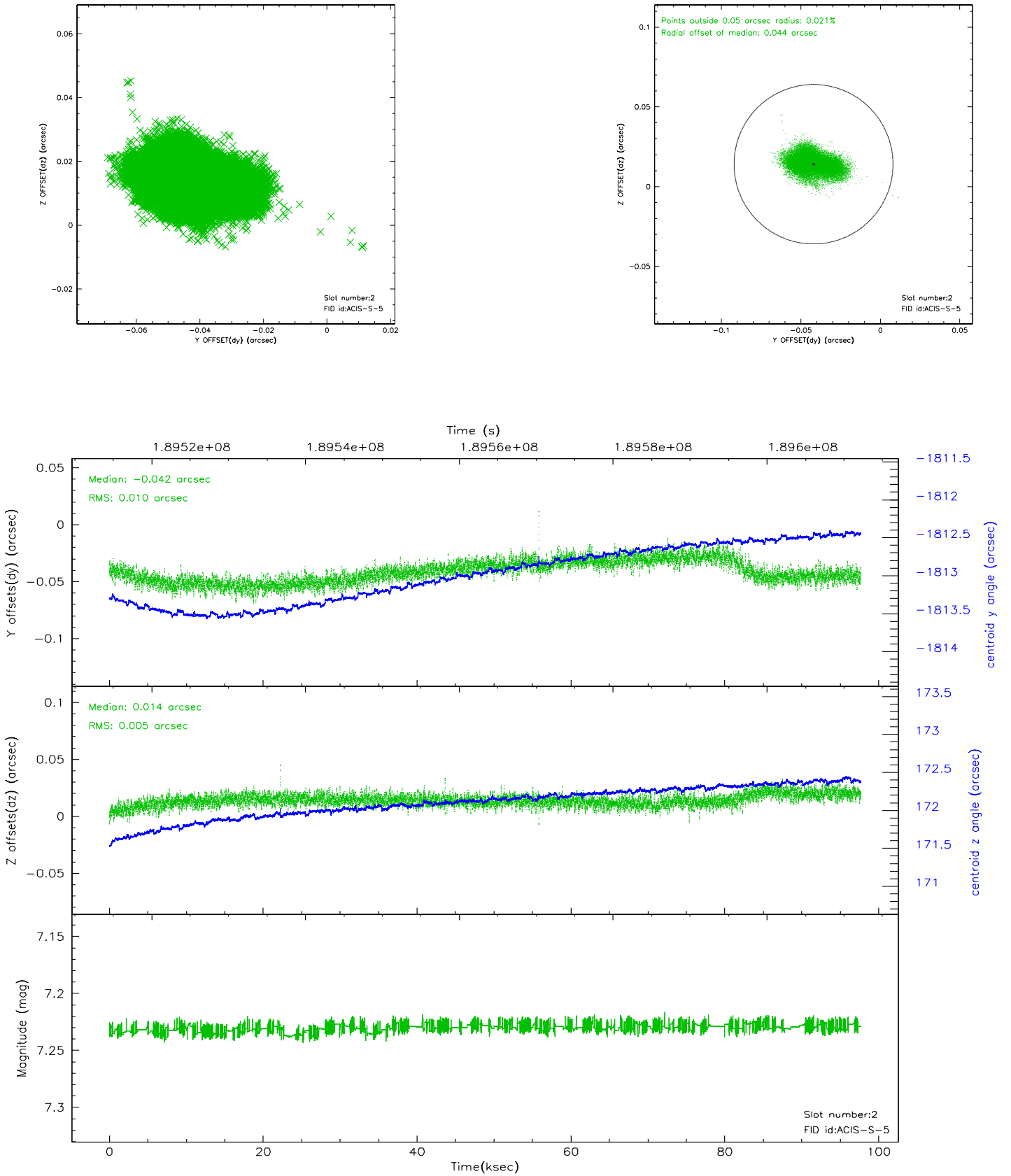
2.5.1 Slot 0



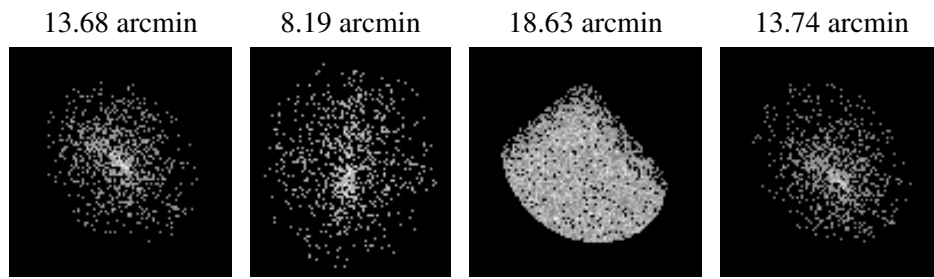
2.5.2 Slot 1



2.5.3 Slot 2



3 Point Sources



A Summary

A.1 Status

V&V Scientist	Beth Sundheim
V&V Date (YYYY-MM-DD)	2006.06.09
V&V Edition	1
V&V Disposition and Status	OK
V&V Charge Time	97.237

A.2 Comments

Focal plane temperature is elevated during final ~20 ksec of observation. Calibration may be affected.