

V&V Reference Report

L2 ASCDS Version : 7.6.7.1

Observation 4939 - L2 Version 002
Chandra X-Ray Center

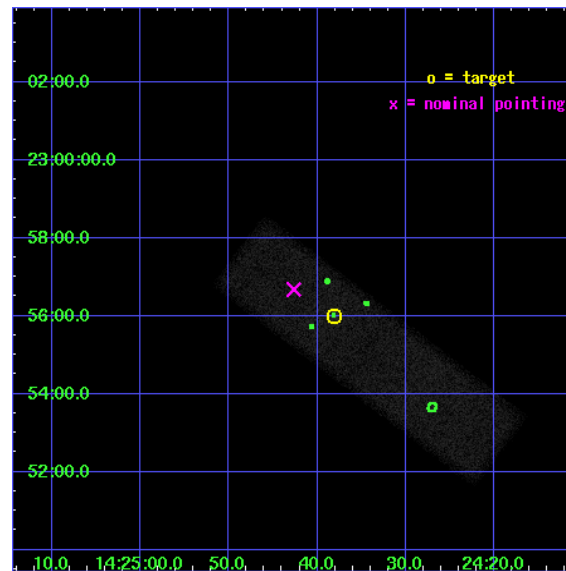
L2 Processing Date : Apr 10 2006

Contents

1	Front	2
2	OBI	3
2.1	OBI	3
2.1.1	Images	3
2.1.2	Bias	3
2.1.3	Parameters	4
2.1.4	Events	4
2.2	Compared Parameters	5
2.3	Aspect	6
2.4	Star Slots	9
2.4.1	Slot 3	9
2.4.2	Slot 4	10
2.4.3	Slot 5	11
2.4.4	Slot 6	12
2.4.5	Slot 7	13
2.5	FID Slots	14
2.5.1	Slot 0	14
2.5.2	Slot 1	15
2.5.3	Slot 2	16
3	Point Sources	17
A	Summary	18
A.1	Status	18
A.2	Comments	18

1 Front

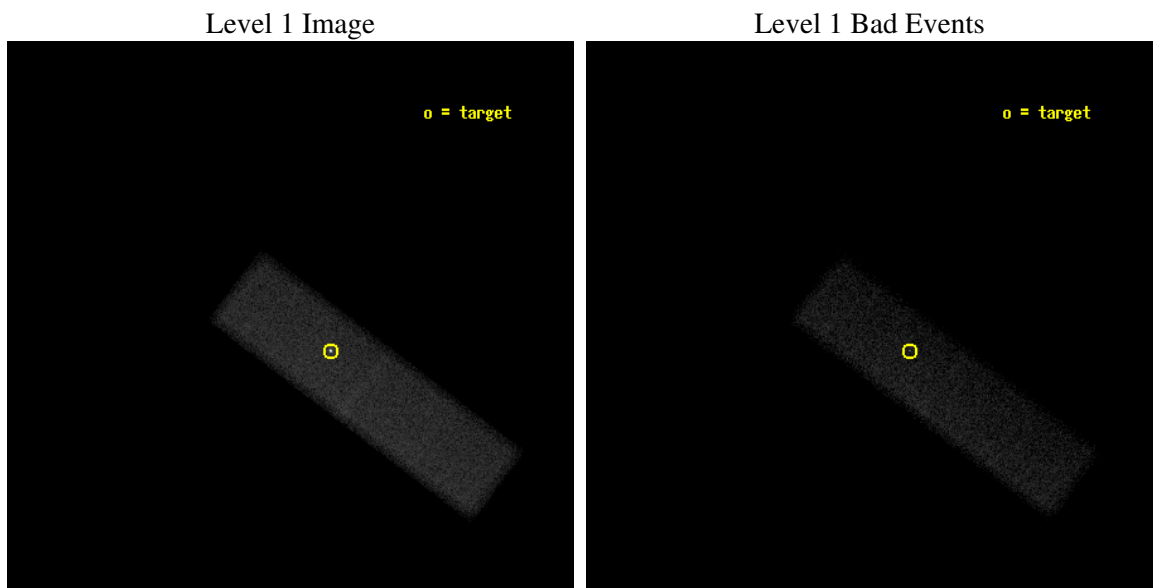
seq_num	800390
obs_id	4939
title	X-RAY OBSERVATIONS OF GALAXY GROUPS ASSOCIATED WITH GRAVITATIONAL LENSES
observer	Professor Gordon Garmire
object	B1422+231
dtcycle	0
cycle	P
ra_targ	216.15875
dec_targ	22.9335
ra_nom	216.17776749546
dec_nom	22.944597275102
roll_nom	37.132725976331
revision	2
ontime	50177.559727639
livetime	47729.059000893
ontime7	50177.559727639
l2events	61095



2 OBI

2.1 OBI

2.1.1 Images



2.1.2 Bias

Chip 7



2.1.3 Parameters

obi_num	0
ascdsver	7.6.7.1
caldbver	3.2.1
date	2006-04-10T23:18:49
revision	2

sched_exp_time	50000.000000
ontime	50365.061264902
ontime7	50365.061264902
l1events	139275

2.1.4 Events

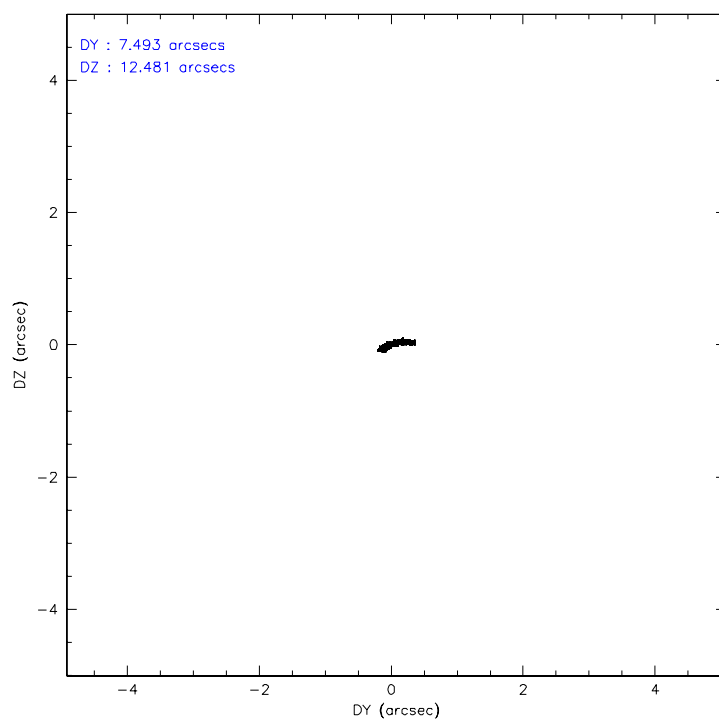
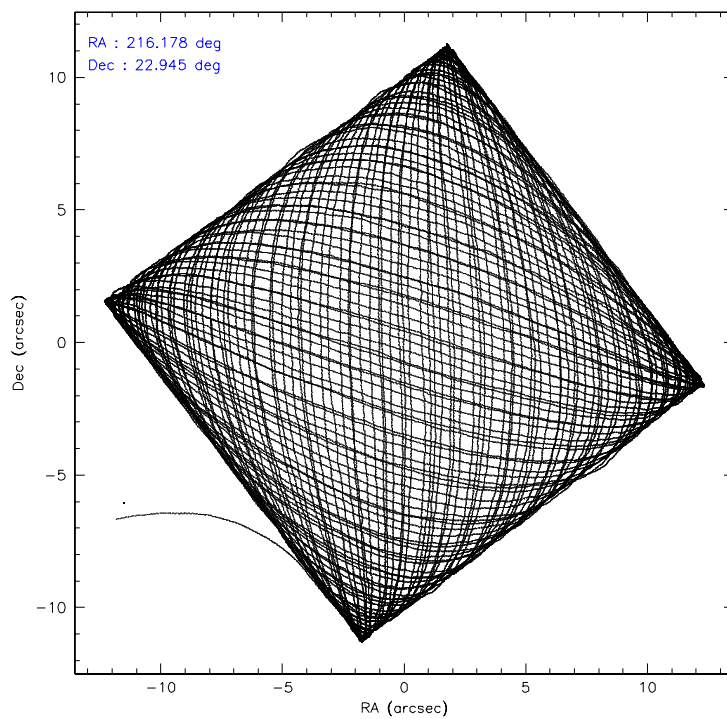
	ccd 7
level 1 events	139275
rejected events	76452
rejected %	54%

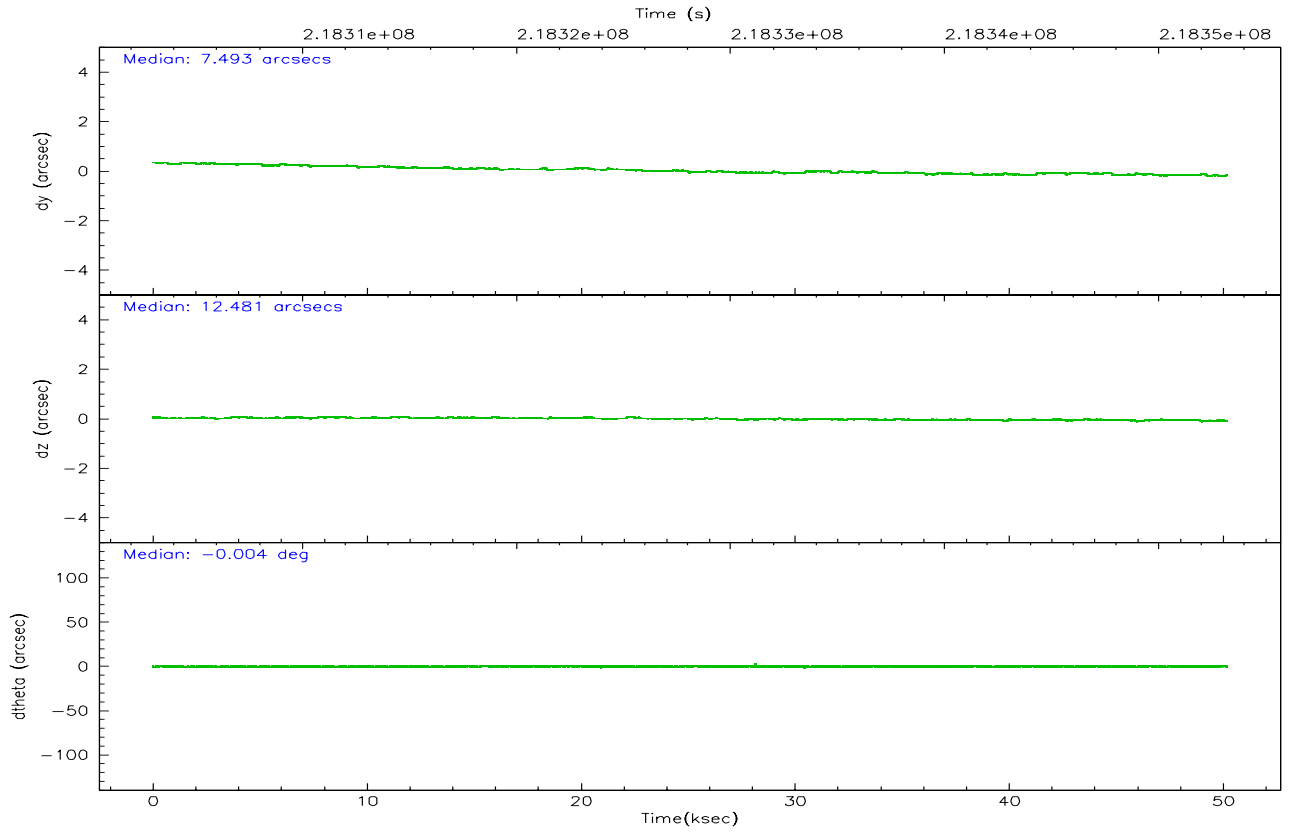
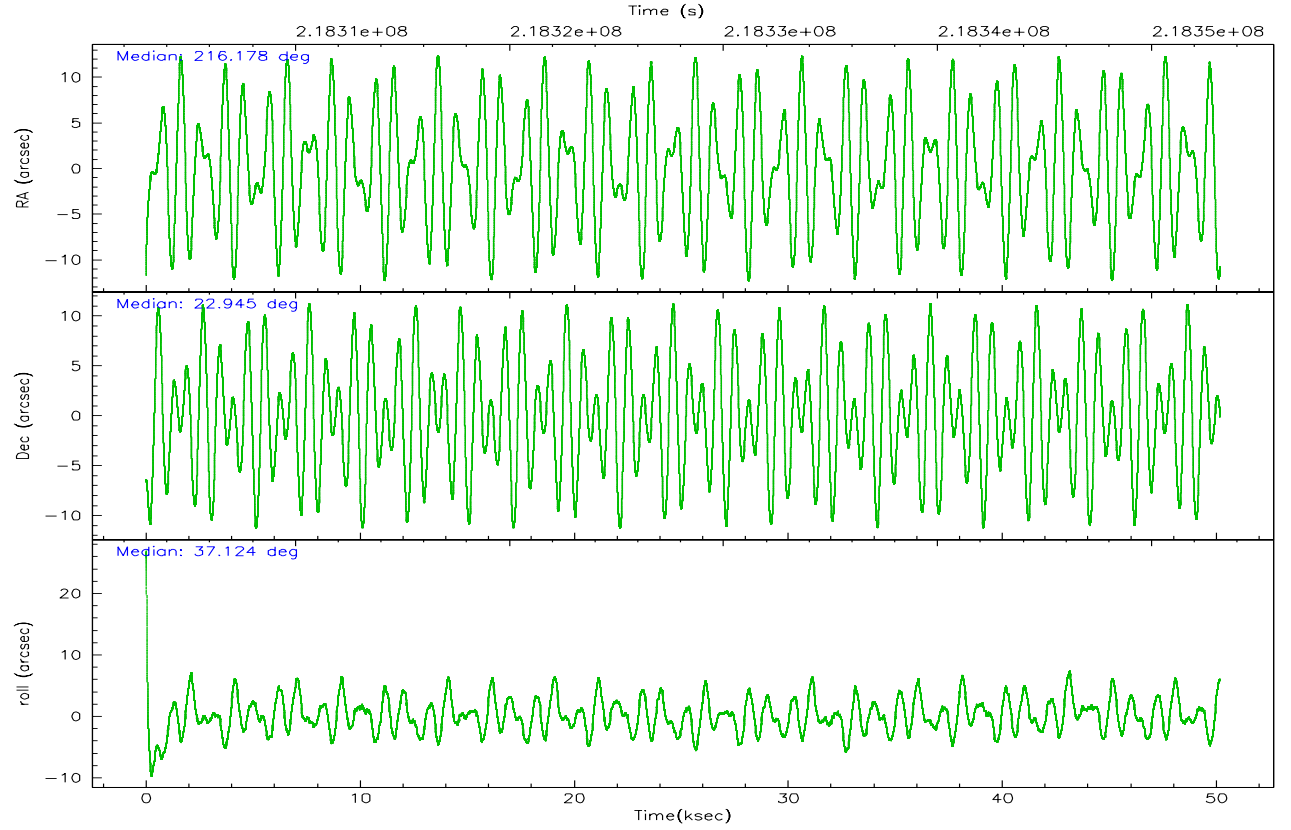
	ccd 7
grade 0 events	5760
	4%
grade 1 events	109
	0%
grade 2 events	15242
	10%
grade 3 events	5088
	3%
grade 4 events	4951
	3%
grade 5 events	9336
	6%
grade 6 events	32027
	22%
grade 7 events	66762
	47%

2.2 Compared Parameters

Parameter	Planned	Actual	Parameter	Planned	Actual
Instrument	ACIS	ACIS	Obspar format version number	6	6
Detector	ACIS-7	ACIS-7	Obspar file type	PREDICTED	ACTUAL
Grating	NONE	NONE	Obspar update status	NONE	UPDATED
Data mode	VFAINT	VFAINT	On-chip summing requested	N	N
Observation mode	POINTING	POINTING	Subarray requested	1/4	1/4
Pointing RA	216.166669	216.1777674954576	Subarray start row	0	385
Pointing Dec	22.919387	22.94459727510204	Subarray row count	1024	256
Pointing Roll	36.980417	37.13272597633088	Alternating exposures requested	N	N
SIM focus pos (mm)	-0.684267	-0.6828225247311905	Primary exposure time	0.000000	0.8
SIM defocus (mm)	0	0.001444936568705701			
SIM translation stage pos (mm)	-190.132523	-190.1400660498719			
SIM translation stage offset (mm)	0	0.00754346686406393			
Observation start time	218303201.184000	218302327.23145			
Observation start date	2004-12-01T15:45:37	2004-12-01T15:32:07			
Observation end time	218353201.184000	218354164.55878			
Observation end date	2004-12-02T05:38:57	2004-12-02T05:56:04			
Read mode	TIMED	TIMED			

2.3 Aspect



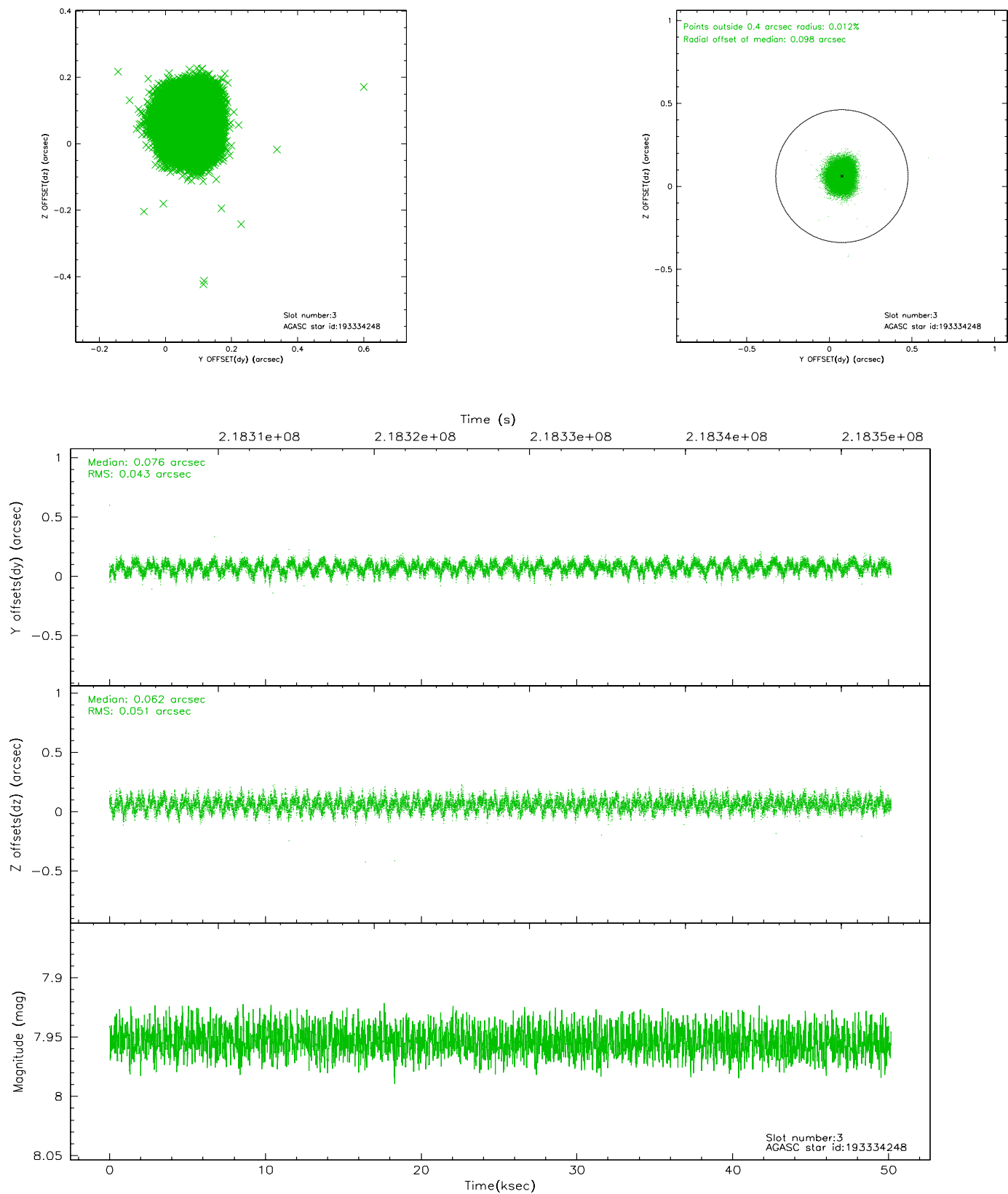


Slot Statistics

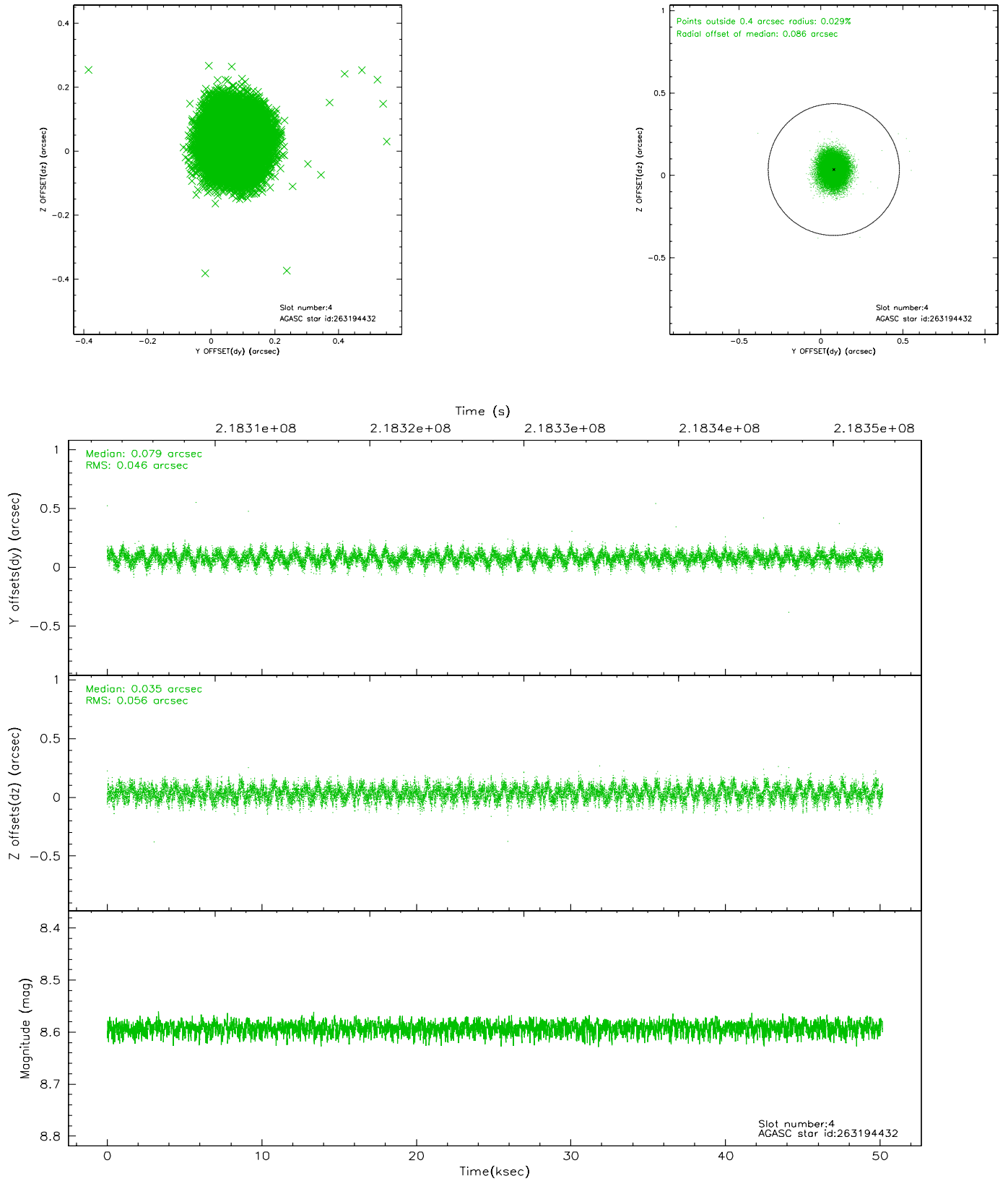
slot	status	id	mag	n_pts	med_dy	med_dz	dr1	dr2	ra	dec	mean_y	mean_z
0	FID	ACIS-S-2	7.10	12239	0.002	-0.010	0.008	0.012	0.000000	0.000000	-760.30	-1733.80
1	FID	ACIS-S-4	7.20	12238	0.022	0.002	0.008	0.013	0.000000	0.000000	2153.01	174.69
2	FID	ACIS-S-5	7.23	12239	-0.054	0.017	0.011	0.019	0.000000	0.000000	-1813.21	168.39
3	GUIDE	193334248	7.95	24476	0.076	0.062	0.072	0.112	215.839819	22.271930	-2270.71	-1206.10
4	GUIDE	263194432	8.59	24469	0.079	0.035	0.077	0.122	216.192636	22.671847	-466.79	-763.56
5	GUIDE	263196048	8.70	24469	-0.022	-0.005	0.058	0.095	216.468737	22.828170	604.15	-864.11
6	GUIDE	263198168	8.83	24476	-0.140	0.141	0.071	0.116	216.844674	22.716629	1362.99	-1932.25
7	GUIDE	263200584	9.67	24454	0.011	-0.233	0.106	0.176	215.715152	23.220906	-538.82	1767.38

2.4 Star Slots

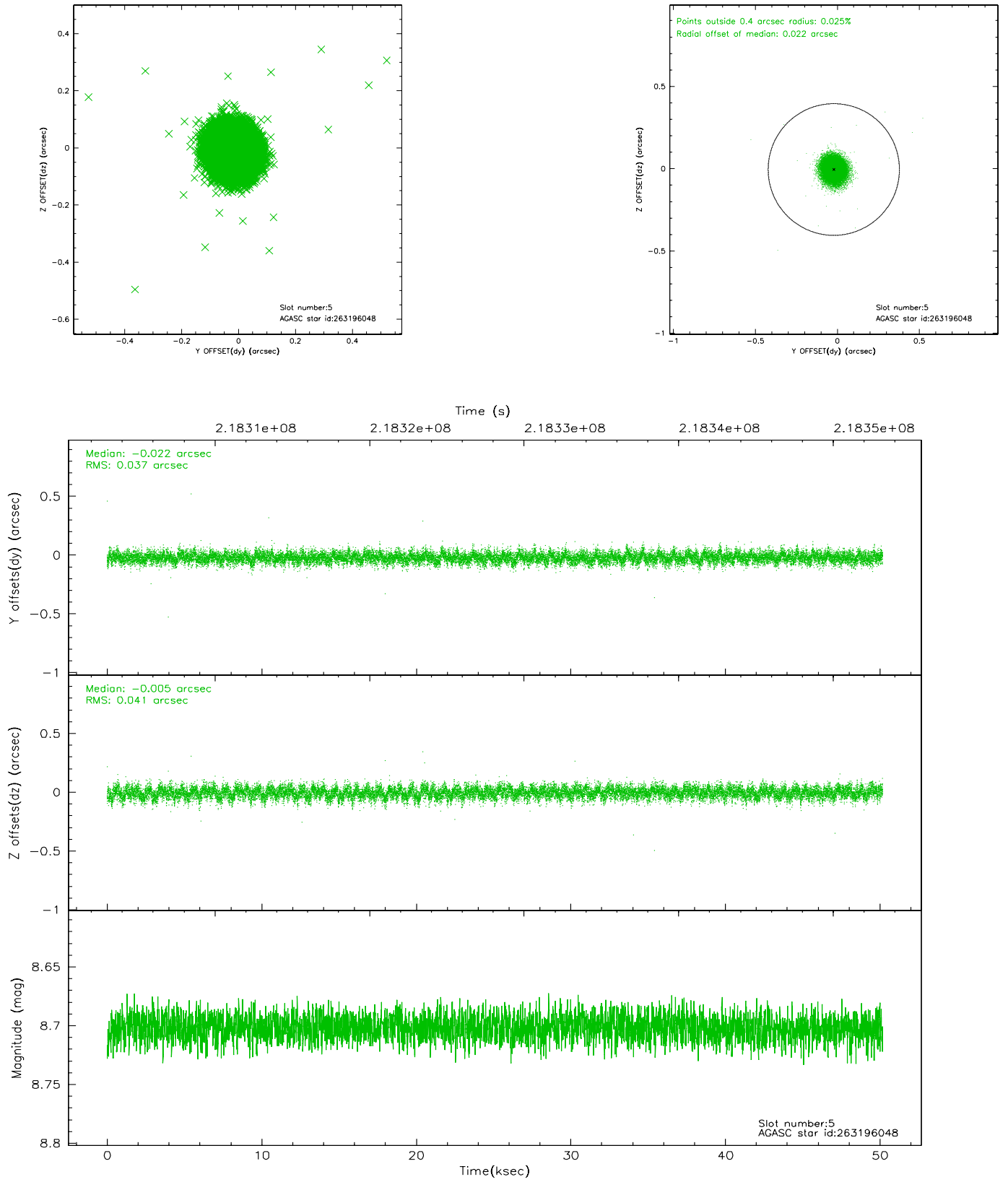
2.4.1 Slot 3



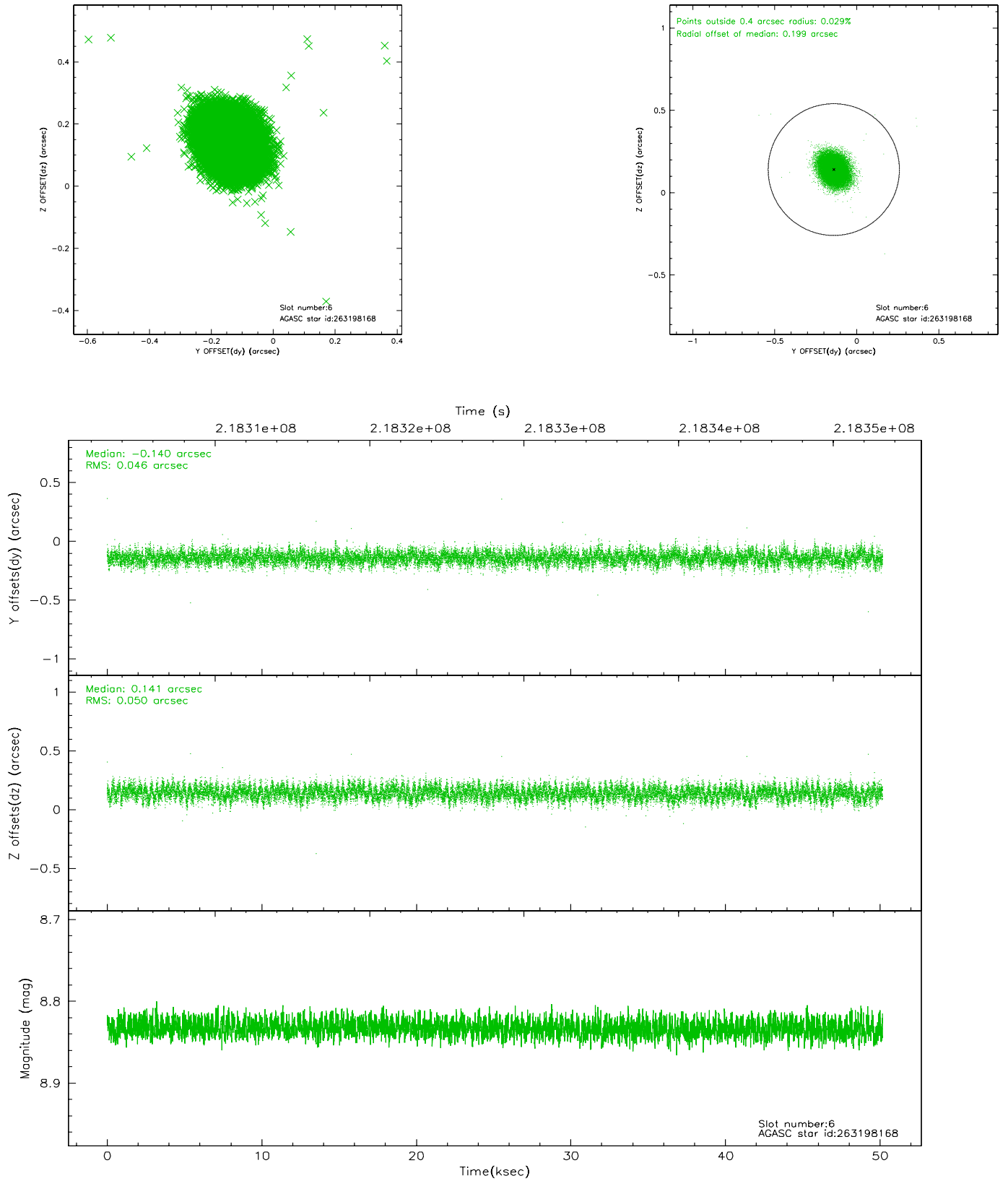
2.4.2 Slot 4



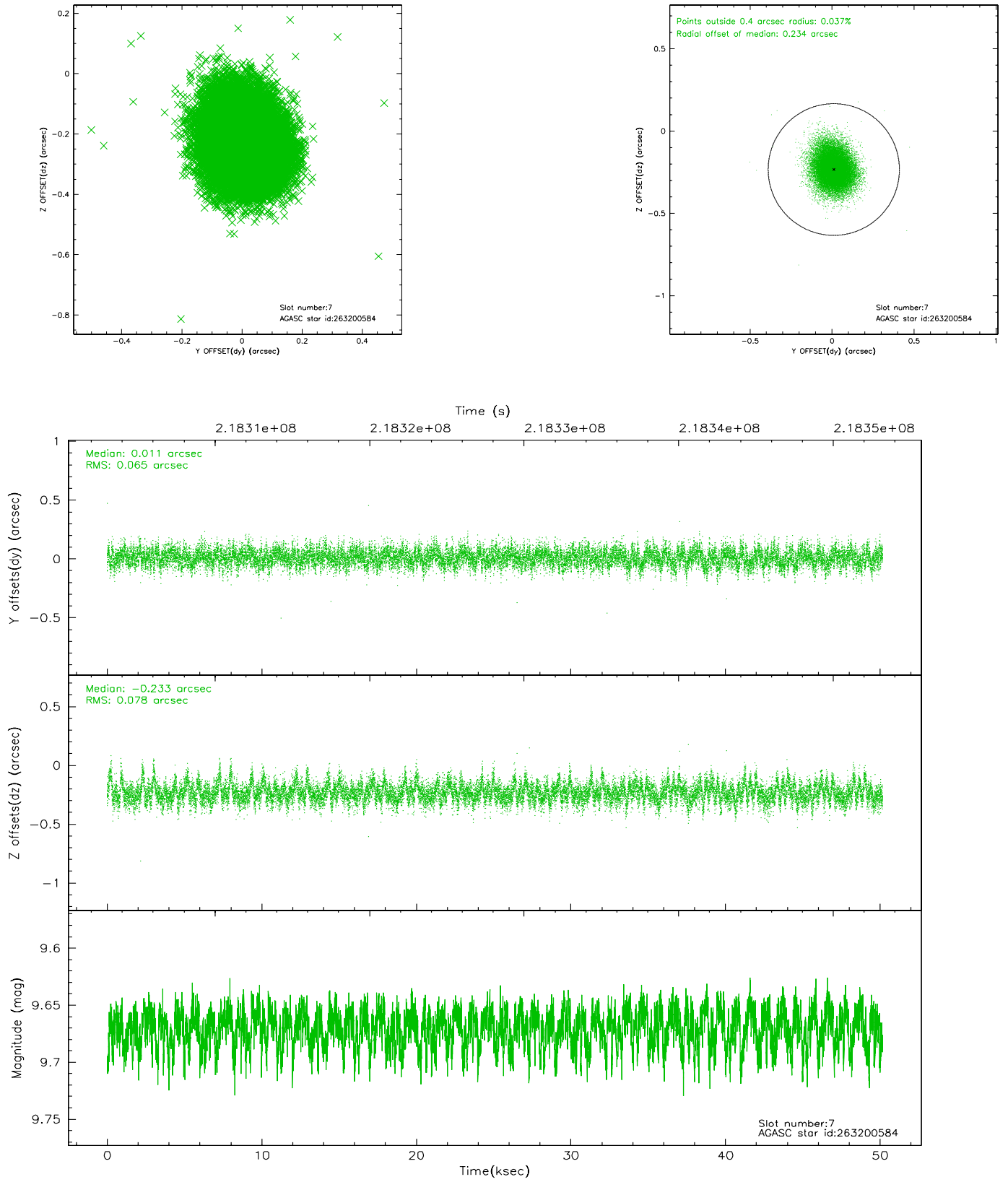
2.4.3 Slot 5



2.4.4 Slot 6

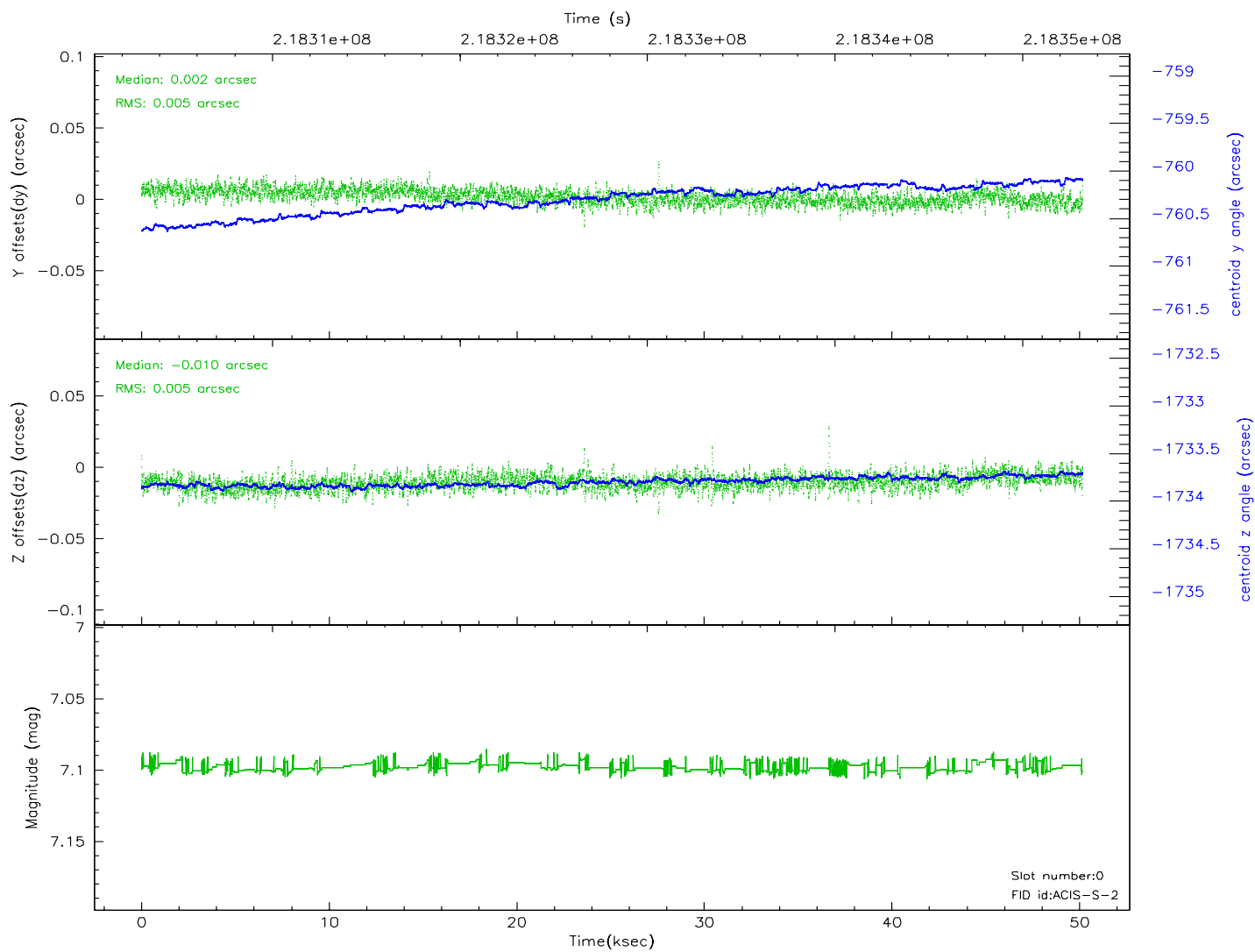
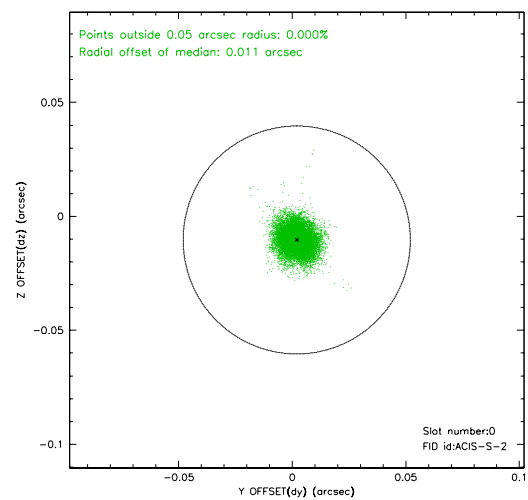
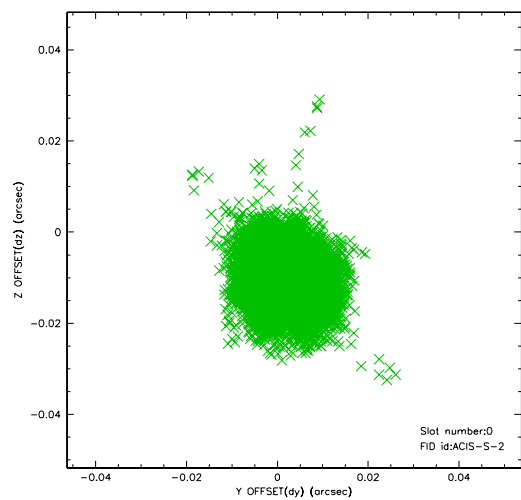


2.4.5 Slot 7

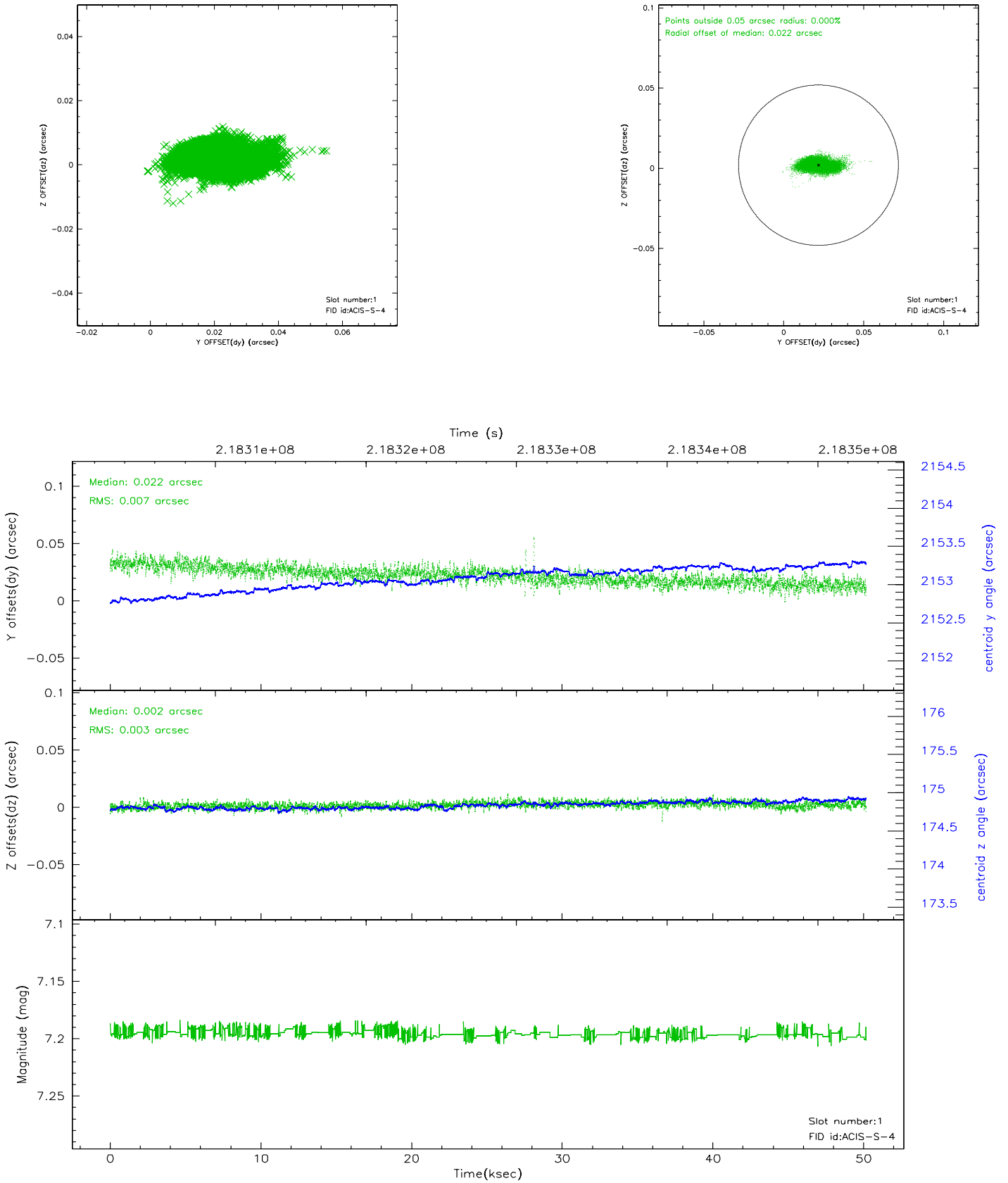


2.5 FID Slots

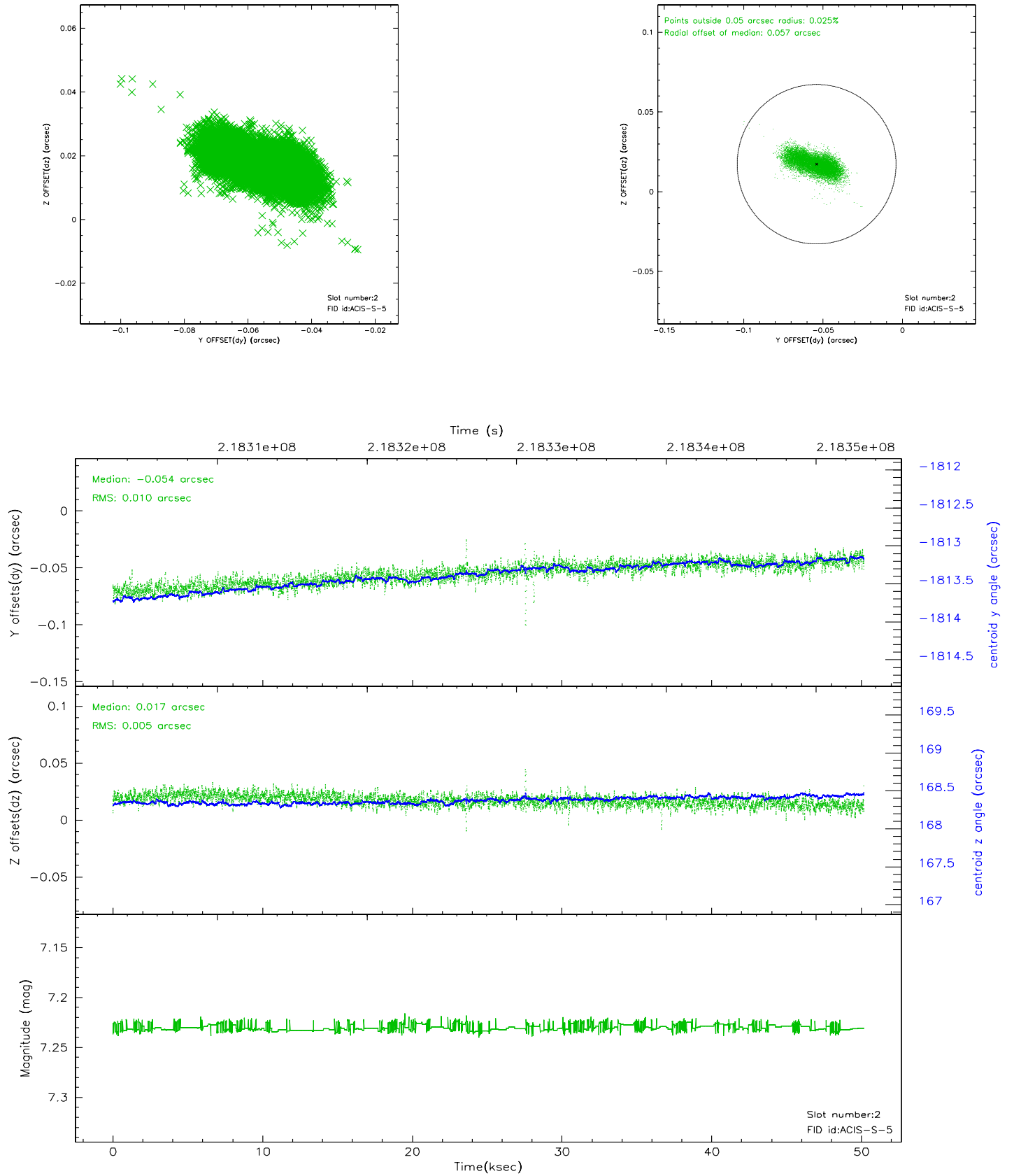
2.5.1 Slot 0



2.5.2 Slot 1



2.5.3 Slot 2



3 Point Sources

A Summary

A.1 Status

V&V Scientist	Jen Lauer
V&V Date (YYYY-MM-DD)	2006.04.11
V&V Edition	1
V&V Disposition and Status	OK
V&V Charge Time	50.17755

A.2 Comments