

V&V Reference Report

L2 ASCDS Version : 8.4.5

Observation 4935 - L2 Version 3
Chandra X-Ray Center

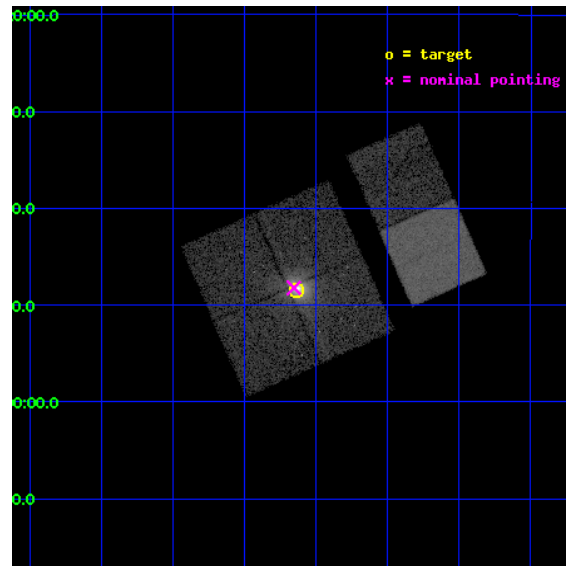
L2 Processing Date : Nov 10 2012

Contents

1	Front	2
2	OBI	3
2.1	OBI	3
2.1.1	Images	3
2.1.2	Bias	3
2.1.3	Parameters	4
2.1.4	Events	4
2.2	Compared Parameters	5
2.3	Aspect	6
2.4	Star Slots	9
2.4.1	Slot 3	9
2.4.2	Slot 4	10
2.4.3	Slot 5	11
2.4.4	Slot 6	12
2.4.5	Slot 7	13
2.5	FID Slots	14
2.5.1	Slot 0	14
2.5.2	Slot 1	15
2.5.3	Slot 2	16
A	Summary	17
A.1	Status	17
A.2	Comments	17

1 Front

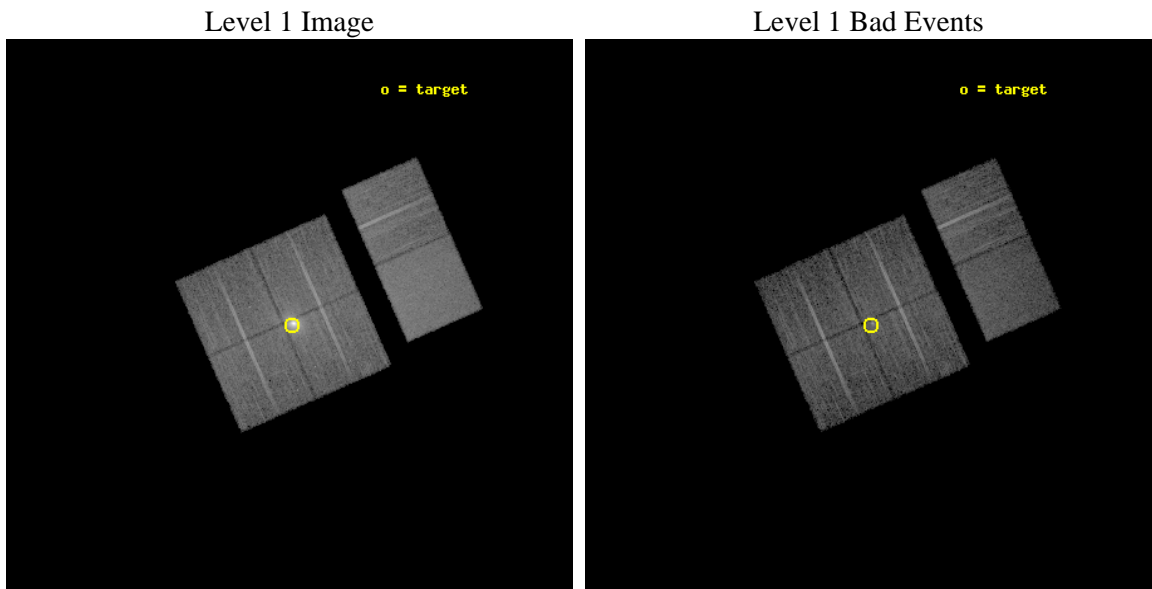
seq_num	800386	Sequence number
obs_id	4935	Observation id
title	An X-ray Study of the extremely luminous Galaxy Cluster RXCJ 1504.1-0248	Proposal title
observer	Dr. Peter Predehl	Principal investigator
object	RXCJ 1504-0248	Source name
dtcycle	0	
cycle	P	events from which exps? Prim/Second/Both
ra_targ	226.035417	Observer's specified target RA [deg]
dec_targ	-2.806806	Observer's specified target Dec [deg]
ra_nom	226.03880233245	Nominal RA [deg]
dec_nom	-2.8035854921742	Nominal Dec [deg]
roll_nom	66.229857073976	Nominal Roll [deg]
revision	3	Processing version of data
ontime	13465.599949837	Sum of GTIs [s]
livetime	13295.090415261	Livetime [s]
ontime0	13465.599949837	Sum of GTIs [s]
ontime1	13465.599949837	Sum of GTIs [s]
ontime2	13465.599949837	Sum of GTIs [s]
ontime3	13465.599949837	Sum of GTIs [s]
ontime6	13465.599949837	Sum of GTIs [s]
ontime7	13465.599949837	Sum of GTIs [s]
l2events	131515	Number of level 2 events



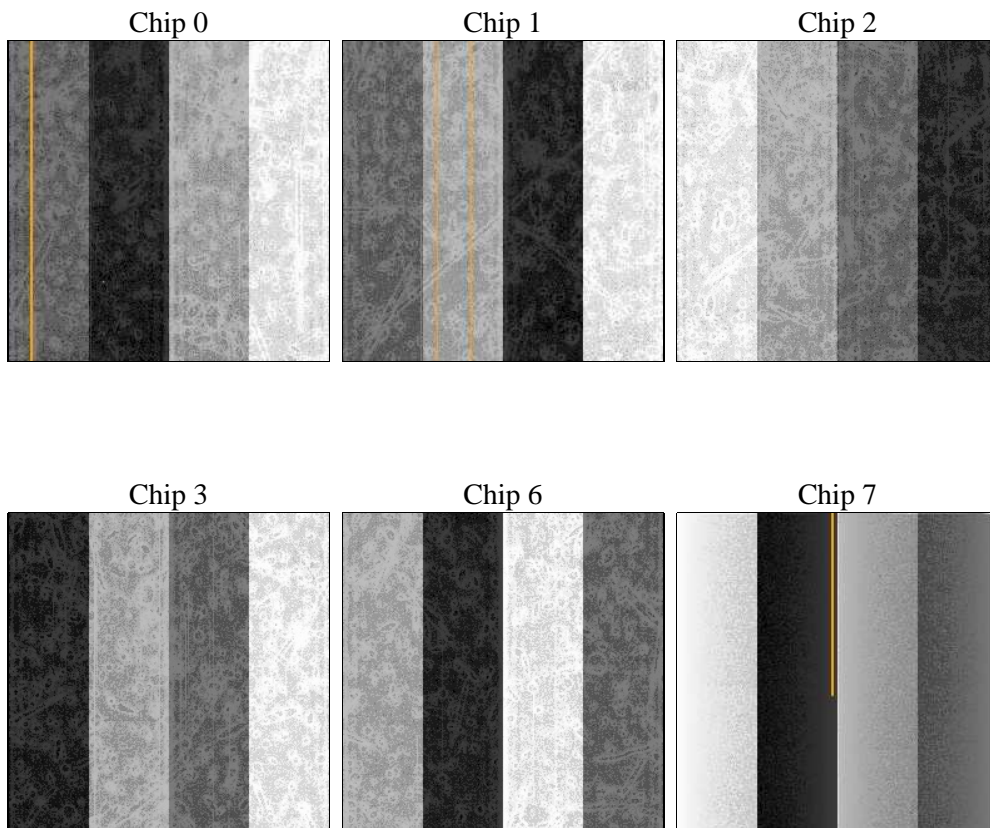
2 OBI

2.1 OBI

2.1.1 Images



2.1.2 Bias



2.1.3 Parameters

obi_num	0	Obi number	sched_exp_time	13500.000000	[s] Scheduled observation exposure time
ascdsver	8.4.5	Processing system revision	ontime	13465.599949837	Sum of GTIs [s]
caldsver	4.5.2	 	ontime0	13465.599949837	Sum of GTIs [s]
date	2012-11-10T03:05:36	Date and time of file creation	ontime1	13465.599949837	Sum of GTIs [s]
revision	3	Processing version of data	ontime2	13465.599949837	Sum of GTIs [s]
			ontime3	13465.599949837	Sum of GTIs [s]
			ontime6	13465.599949837	Sum of GTIs [s]
			ontime7	13465.599949837	Sum of GTIs [s]
			l1events	537908	Number of level 1 events

2.1.4 Events

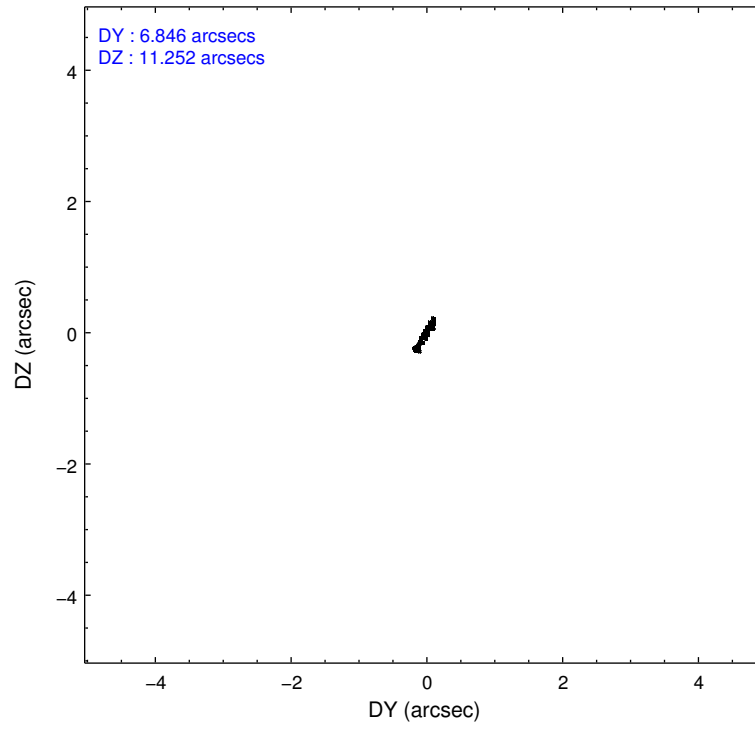
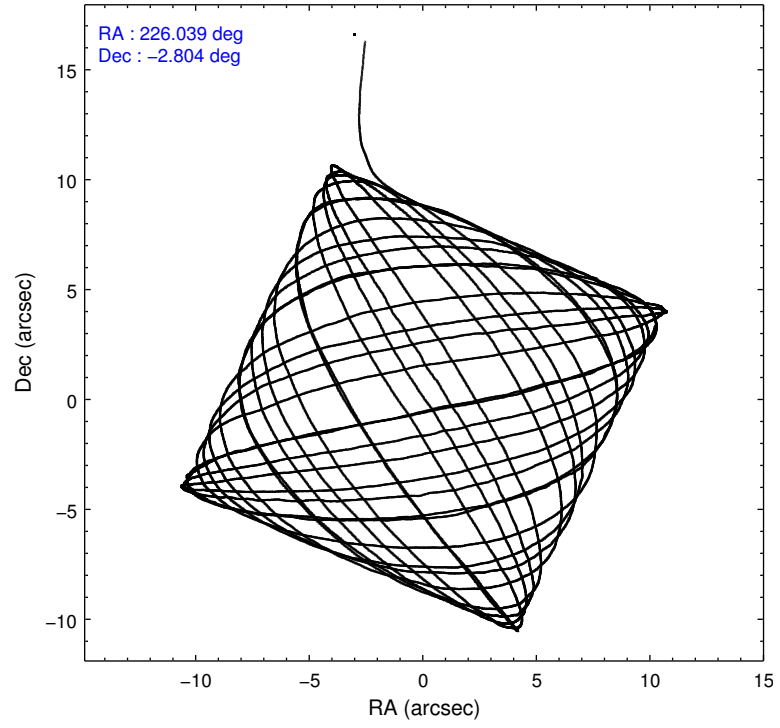
	ccd 0	ccd 1	ccd 2	ccd 3	ccd 6	ccd 7		ccd 0	ccd 1	ccd 2	ccd 3	ccd 6	ccd 7
level 1 events	72123	74976	83080	115327	83807	108595	grade 0 events	5487	5485	8002	33492	4385	4249
rejected events	60590	62811	68706	69640	73129	63109		7%	7%	9%	29%	5%	3%
rejected %	84%	83%	82%	60%	87%	58%	grade 1 events	51	39	65	293	44	93
								0%	0%	0%	0%	0%	0%
							grade 2 events	2247	2487	2456	5586	2287	9006
								3%	3%	2%	4%	2%	8%
							grade 3 events	1023	1034	1016	2048	1005	3858
								1%	1%	1%	1%	1%	3%
							grade 4 events	948	1019	1091	1935	947	4035
								1%	1%	1%	1%	1%	3%
							grade 5 events	3317	3528	3223	3848	3768	10310
								4%	4%	3%	3%	4%	9%
							grade 6 events	1829	2141	1812	2636	2056	24350
								2%	2%	2%	2%	2%	22%
							grade 7 events	57221	59243	65415	65489	69315	52694
								79%	79%	78%	56%	82%	48%

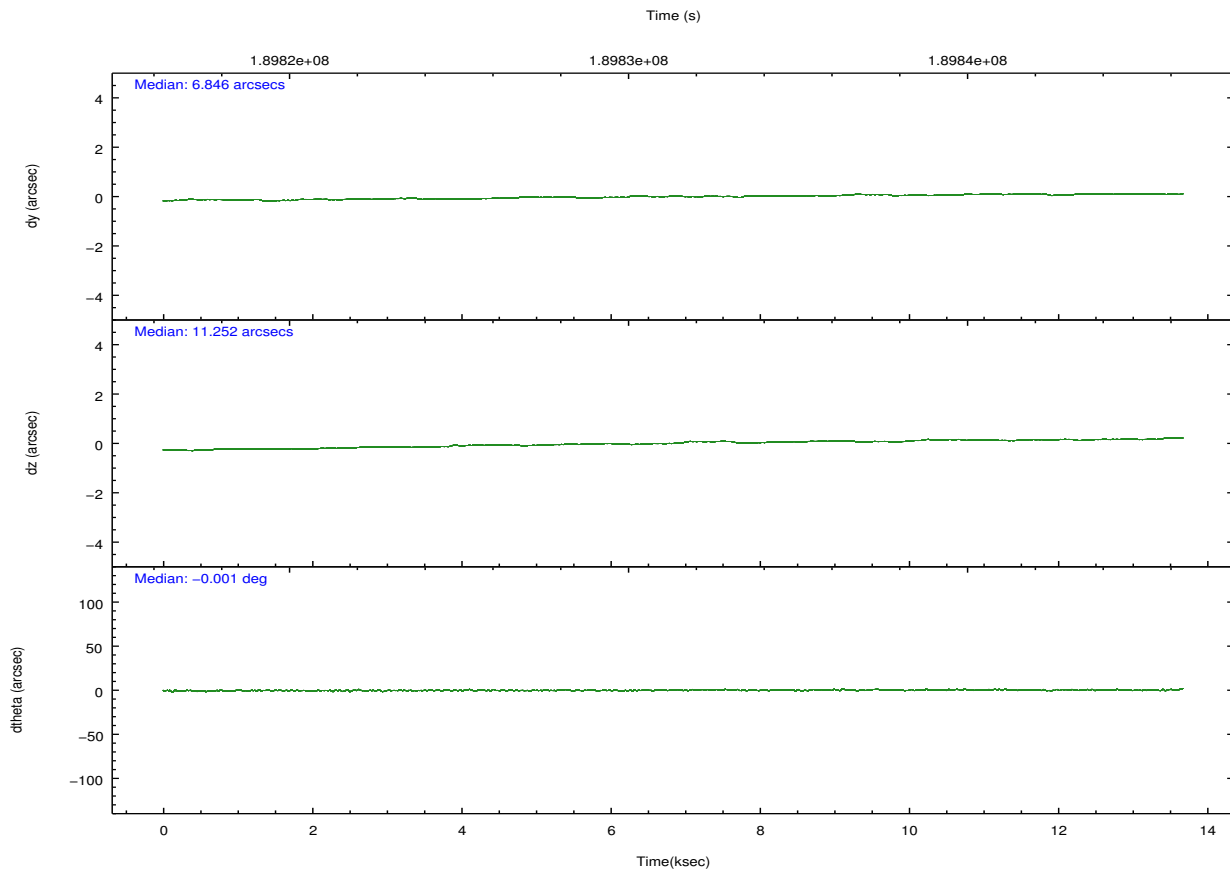
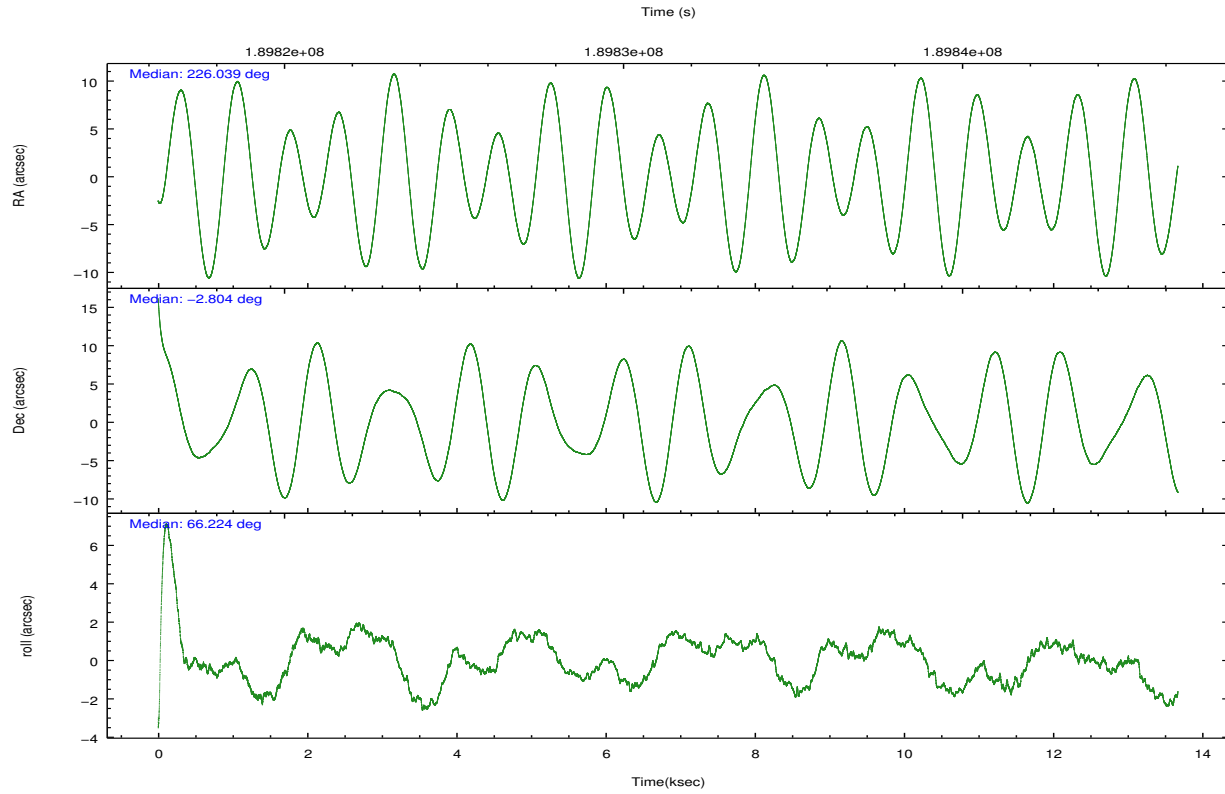
2.2 Compared Parameters

Parameter	Planned	Actual
Instrument	ACIS	ACIS
Detector	ACIS-012367	ACIS-012367
Grating	NONE	NONE
Data mode	FAINT	FAINT
Observation mode	POINTING	POINTING
[deg] Pointing RA	226.041884	226.0388023324528
[deg] Pointing Dec	-2.830841	-2.803585492174182
[deg] Pointing Roll	66.021334	66.22985707397565
[mm] SIM focus pos	-0.782348	-0.7809083437167272
[mm] SIM defocus	0	0.001439871863259334
[mm] SIM translation stage pos	-233.592463	-233.5874344608287
[mm] SIM translation stage offset	0	-0.005018542100998502
[s] Observation start time (MET)	189823990.184000	189823025.8956
Observation start date	2004-01-07T00:52:06	2004-01-07T00:37:05
[s] Observation end time (MET)	189837490.184000	189839158.8838
Observation end date	2004-01-07T04:37:06	2004-01-07T05:05:58
Read mode	TIMED	TIMED

Parameter	Planned	Actual
Obspar format version number	7	7
Obspar file type	PREDICTED	ACTUAL
Obspar update status	NONE	UPDATED
Number of optional ACIS chips dropped	0	0
On-chip summing requested	N	N
Subarray requested	NONE	NONE
Alternating exposures requested	N	N
[s] Primary exposure time	0.000000	3.2

2.3 Aspect



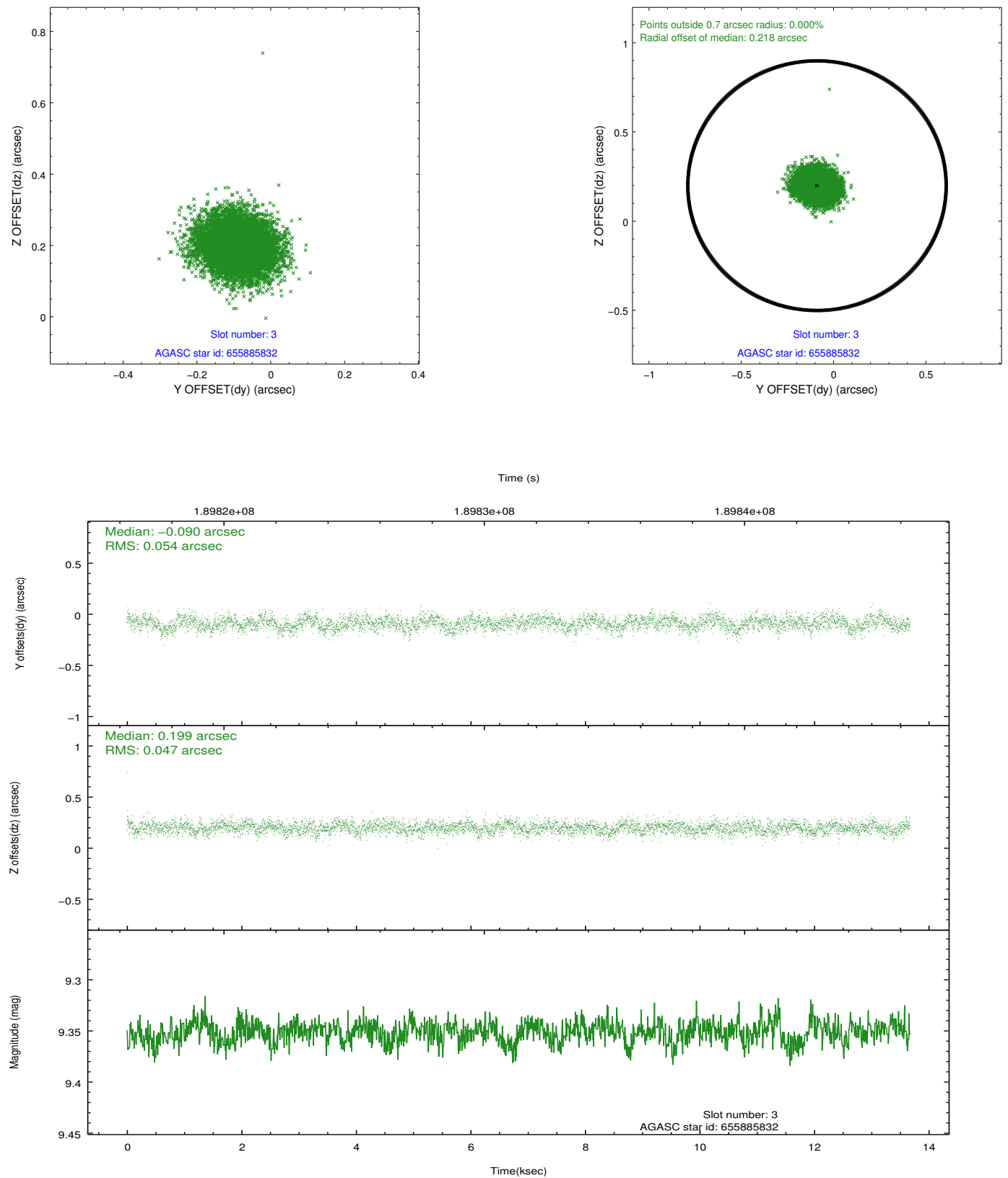


Slot Statistics

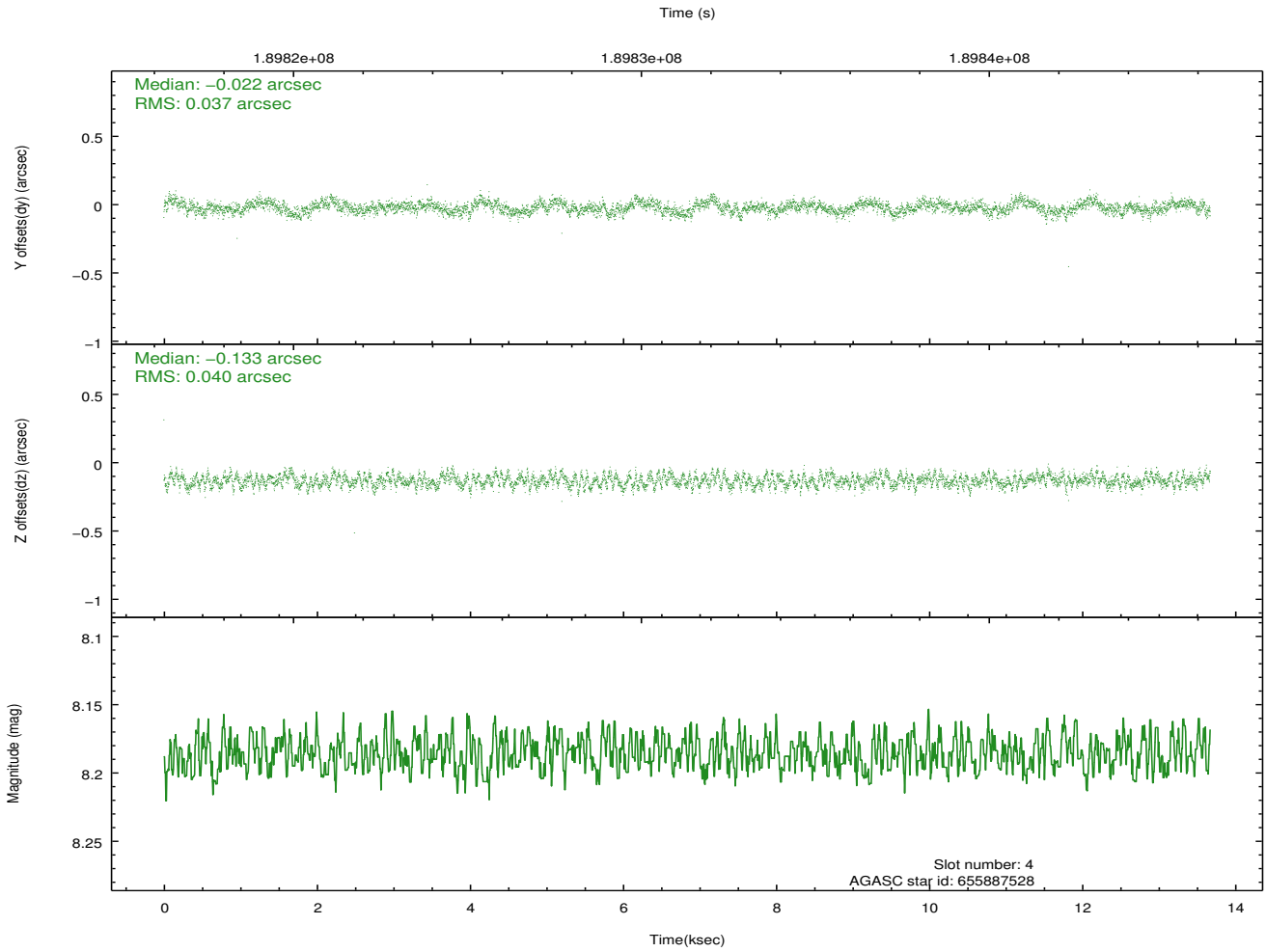
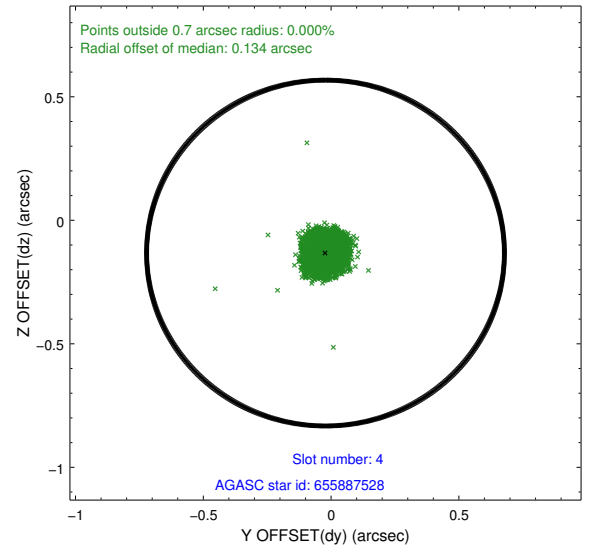
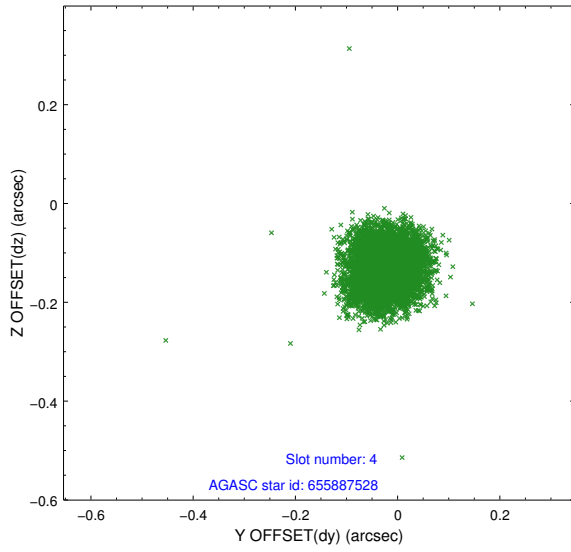
slot	status	id	mag	n_pts	med_dy	med_dz	dr1	dr2	ra	dec	mean_y	mean_z
0	FID	ACIS-I-1	7.24	3335	0.024	-0.004	0.007	0.013	0.000000	0.000000	932.86	-834.77
1	FID	ACIS-I-5	7.23	3334	-0.134	0.050	0.007	0.012	0.000000	0.000000	-1815.18	1062.66
2	FID	ACIS-I-6	7.25	3335	0.019	0.025	0.007	0.012	0.000000	0.000000	398.07	1707.49
3	GUIDE	655885832	9.35	6669	-0.090	0.199	0.077	0.122	226.255485	-2.527966	1308.44	-258.46
4	GUIDE	655887528	8.19	6669	-0.022	-0.133	0.058	0.092	225.707931	-2.599687	272.05	1435.62
5	GUIDE	655887976	8.61	6670	0.265	-0.098	0.065	0.109	225.483318	-3.038087	-1498.08	1531.24
6	GUIDE	655888504	9.27	6667	-0.230	0.083	0.085	0.142	226.393678	-2.410162	1897.53	-540.22
7	GUIDE	655891488	6.96	6670	0.076	-0.054	0.059	0.099	225.686953	-3.031386	-1178.17	872.29

2.4 Star Slots

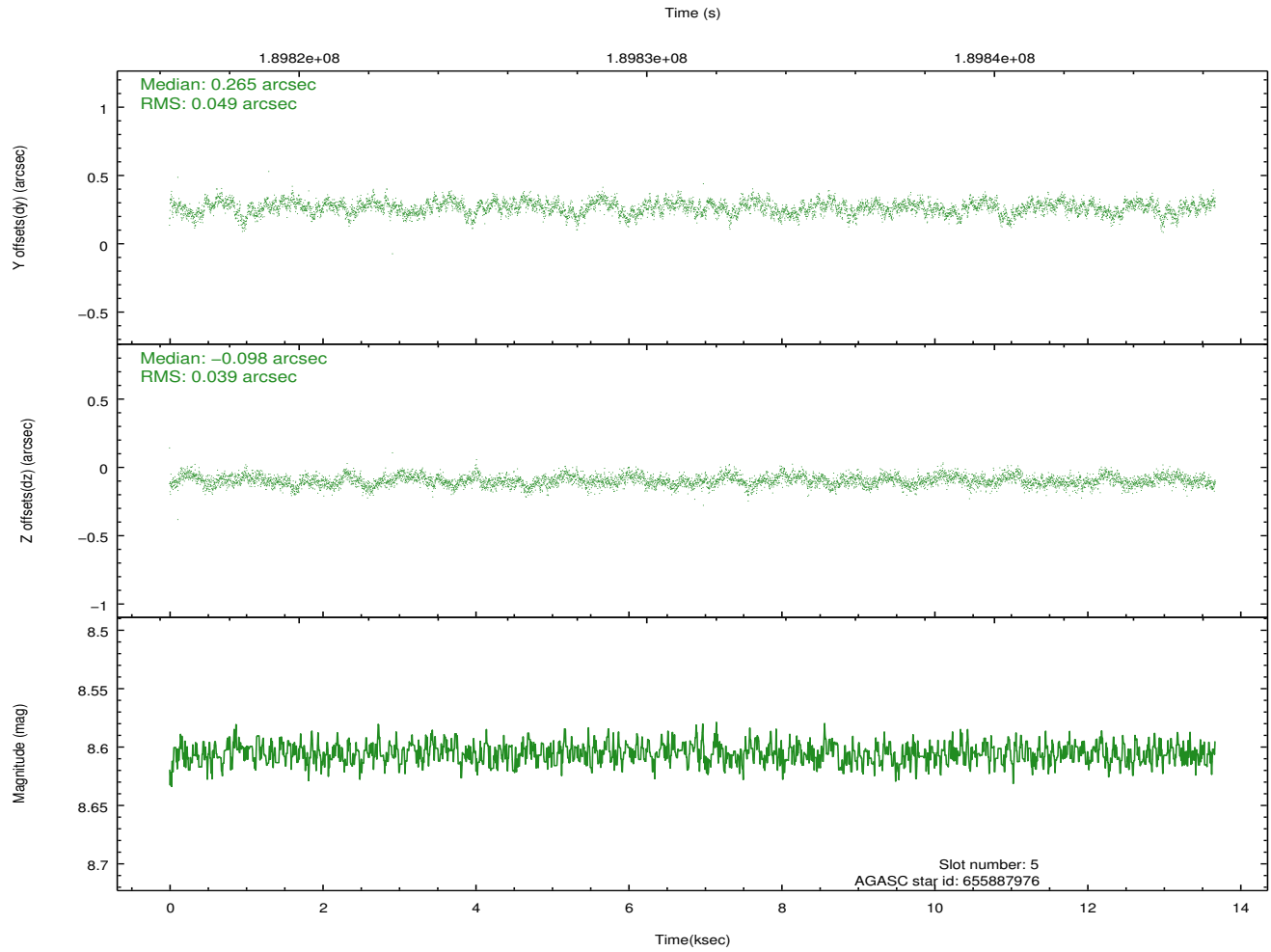
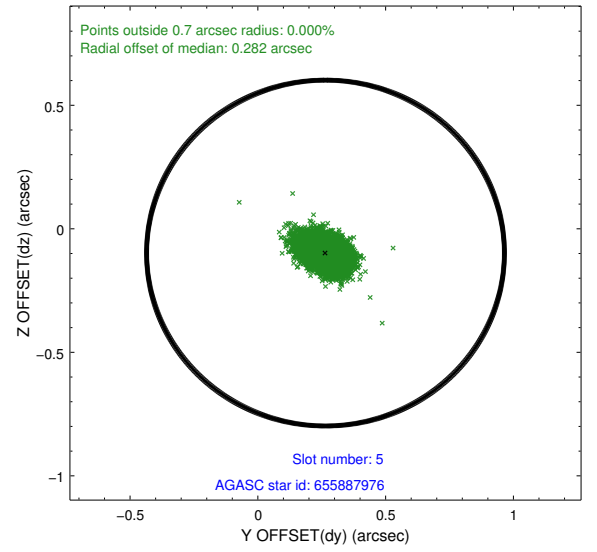
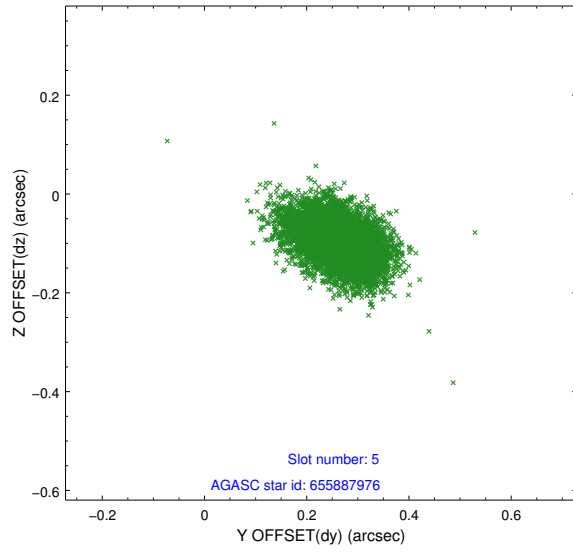
2.4.1 Slot 3



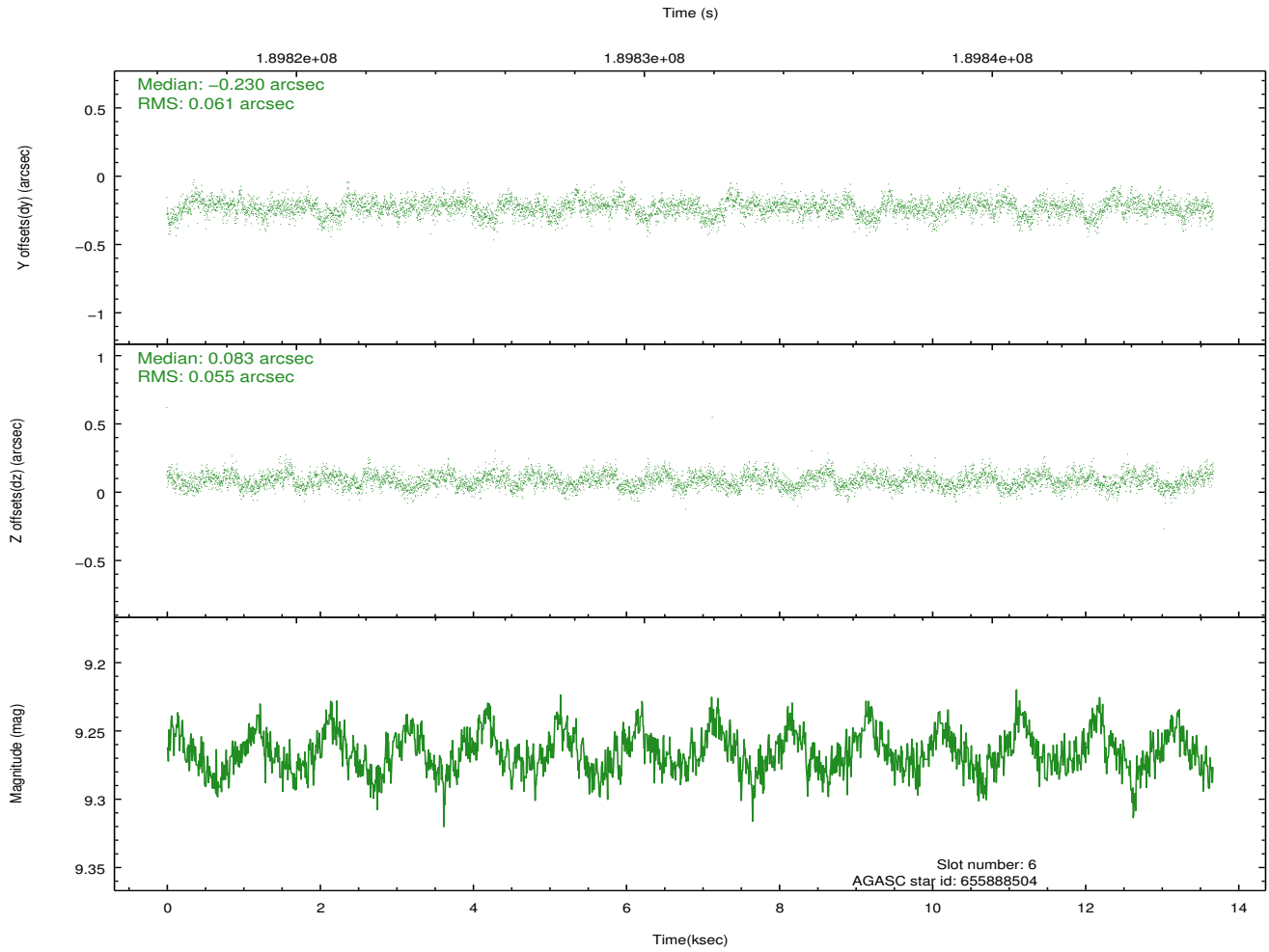
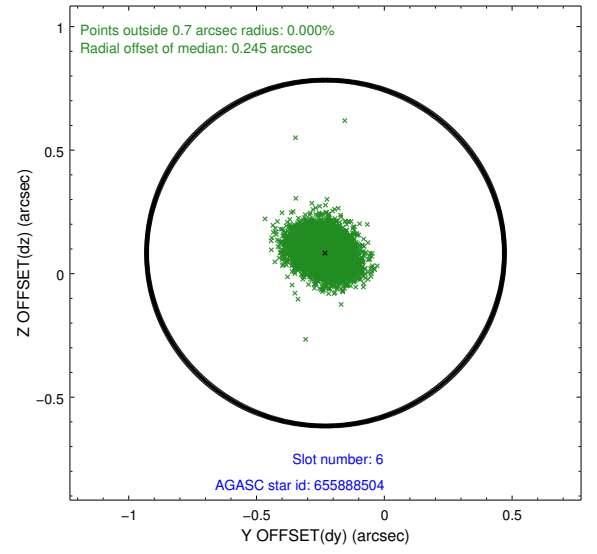
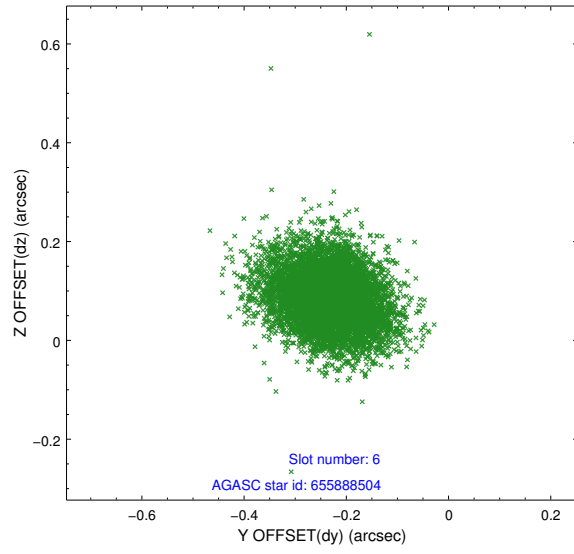
2.4.2 Slot 4



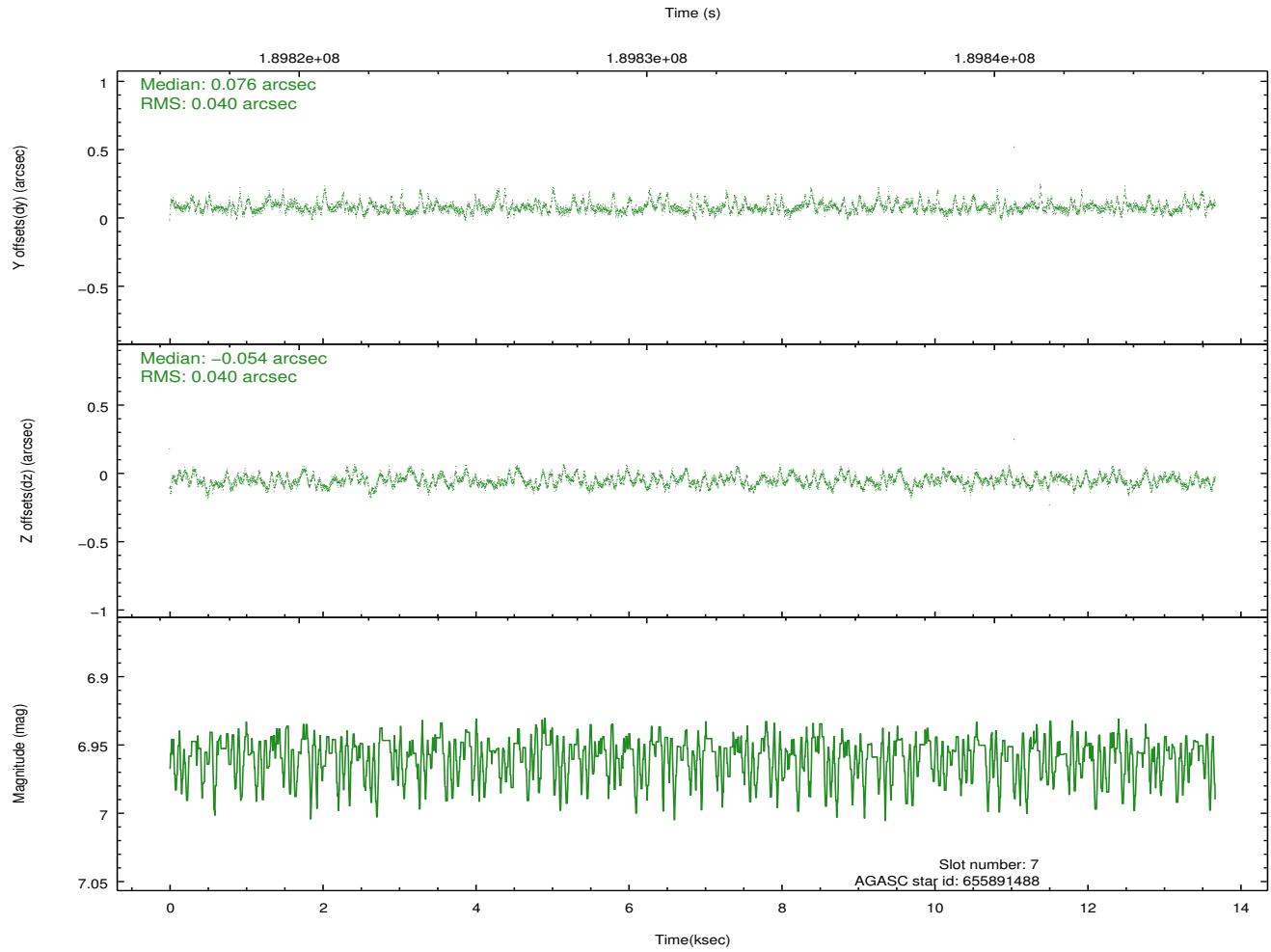
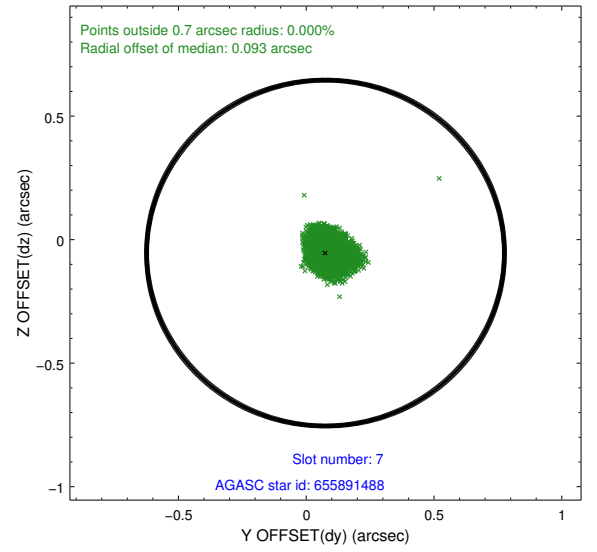
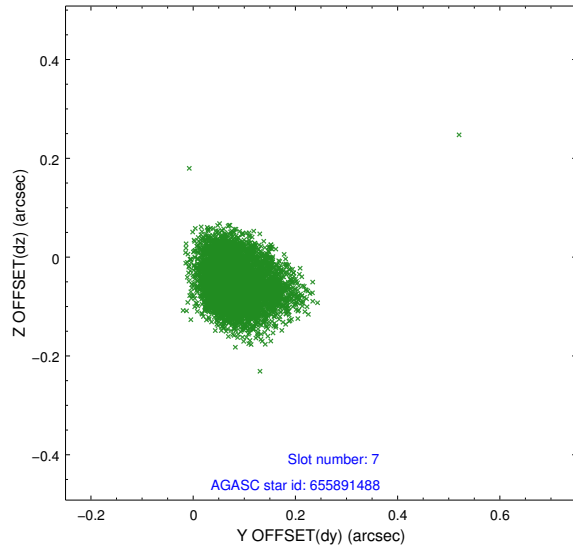
2.4.3 Slot 5



2.4.4 Slot 6

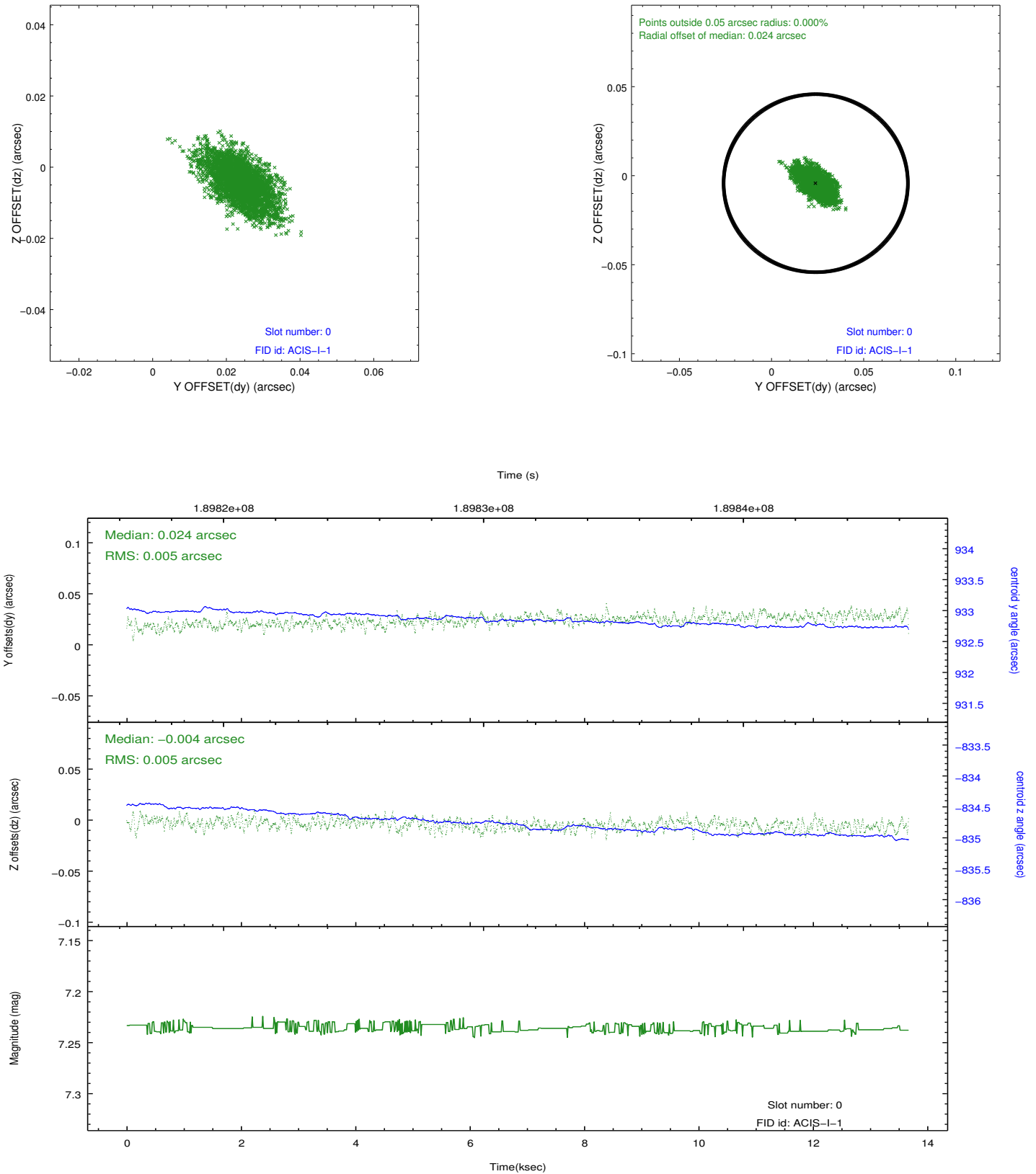


2.4.5 Slot 7

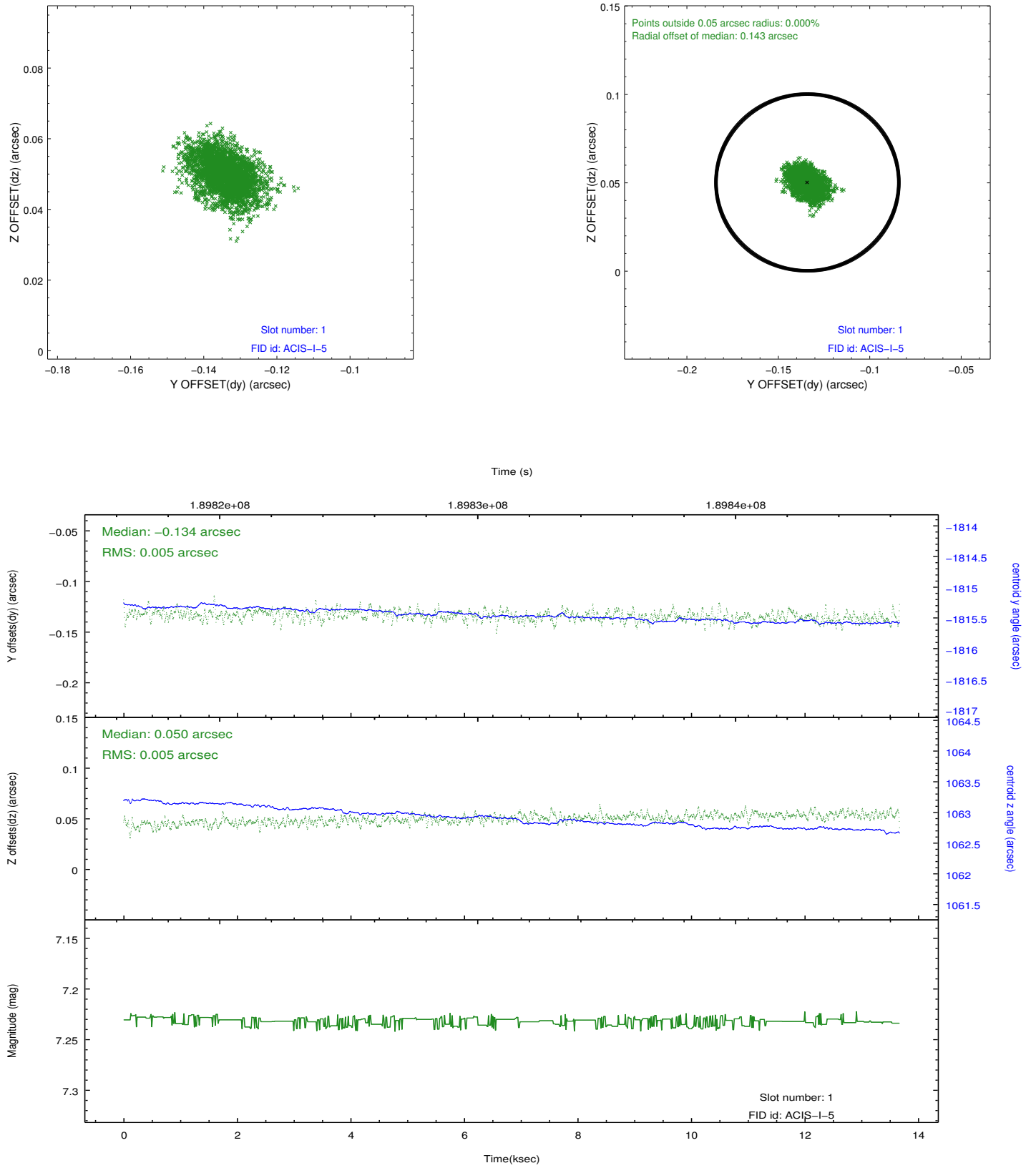


2.5 FID Slots

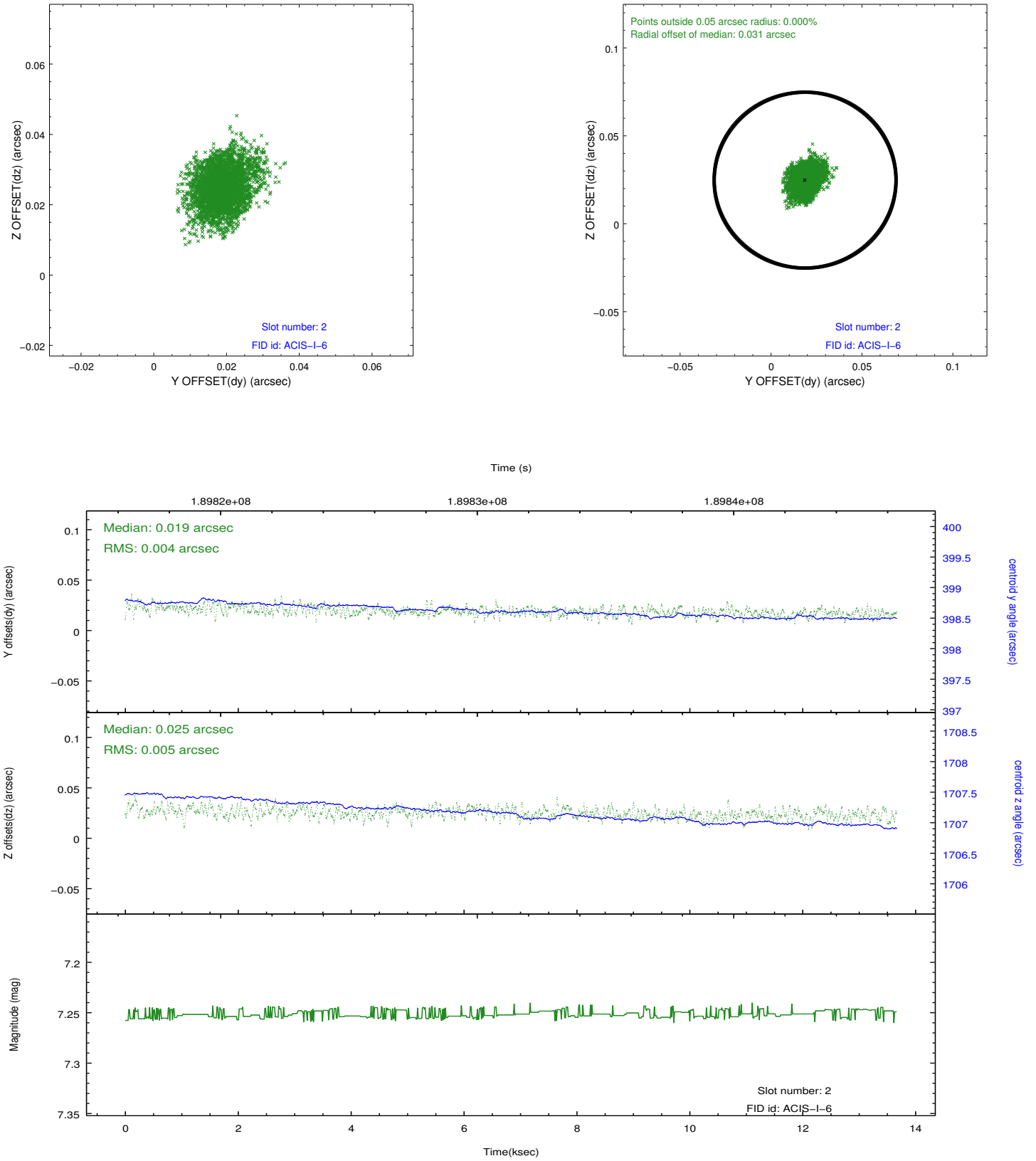
2.5.1 Slot 0



2.5.2 Slot 1



2.5.3 Slot 2



A Summary

A.1 Status

V&V Scientist	Jen Lauer
V&V Date (YYYY-MM-DD)	2012.12.04
V&V Edition	1
V&V Disposition and Status	OK
V&V Charge Time	13.468

A.2 Comments

Centroid of x-ray emission offset from requested coordinates to the west by about 15 arcsec. Some x-ray flux at the edge of the extended source falls on the gaps between the chips and has been dithered over these gaps.