

V&V Reference Report

L2 ASCDS Version : 8.4.5

Observation 4929 - L2 Version 3
Chandra X-Ray Center

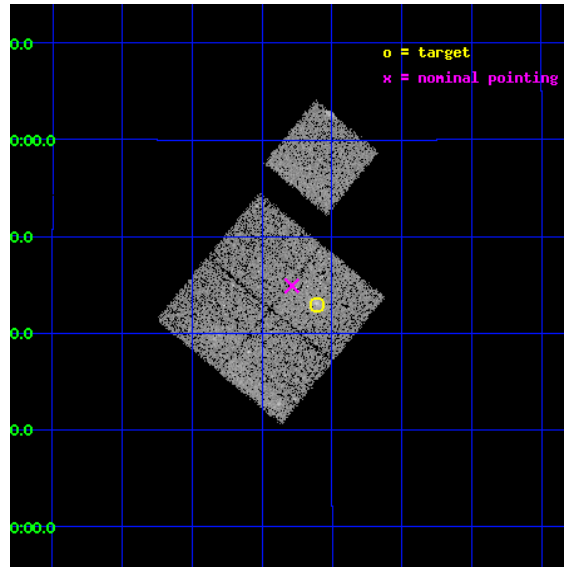
L2 Processing Date : Nov 11 2012

Contents

1	Front	2
2	OBI	3
2.1	OBI	3
2.1.1	Images	3
2.1.2	Bias	3
2.1.3	Parameters	4
2.1.4	Events	4
2.2	Compared Parameters	5
2.3	Aspect	6
2.4	Star Slots	9
2.4.1	Slot 3	9
2.4.2	Slot 4	10
2.4.3	Slot 5	11
2.4.4	Slot 6	12
2.4.5	Slot 7	13
2.5	FID Slots	14
2.5.1	Slot 0	14
2.5.2	Slot 1	15
2.5.3	Slot 2	16
A	Summary	17
A.1	Status	17
A.2	Comments	17

1 Front

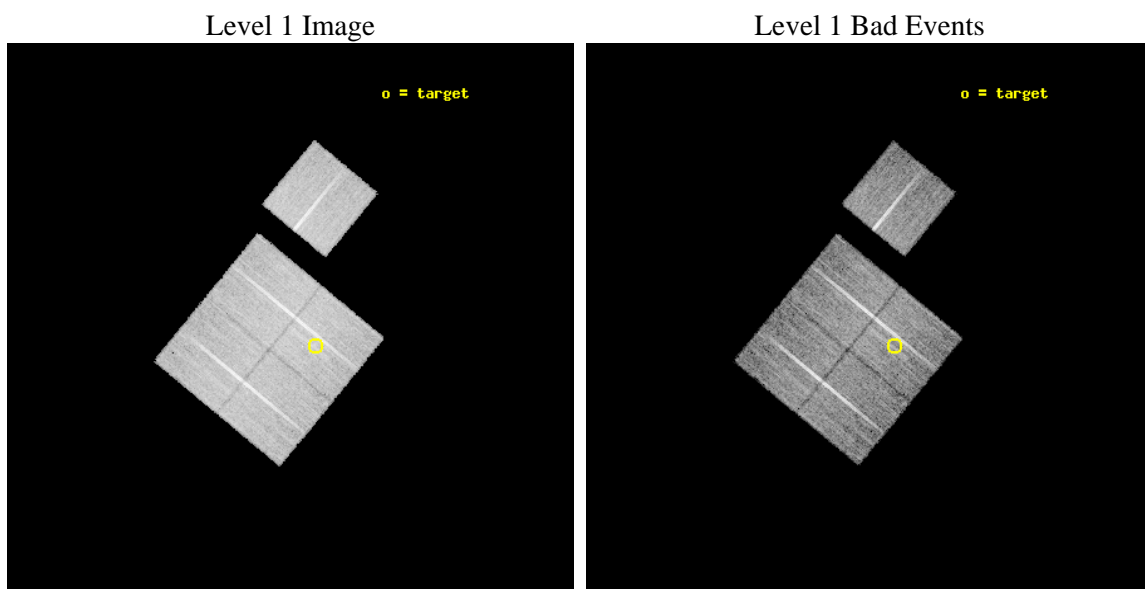
seq_num	800380	Sequence number
obs_id	4929	Observation id
title	Chandra snapshot survey of 10 distant clusters of galaxies	Proposa
observer	Dr. Stephen Murray	Principal investigator
object	CL0926p1242	Source name
dtcycle	0	
cycle	P	events from which exps? Prim/Second/Both
ra_targ	141.6525	Observer's specified target RA [deg]
dec_targ	12.715556	Observer's specified target Dec [deg]
ra_nom	141.69671348939	Nominal RA [deg]
dec_nom	12.748559194066	Nominal Dec [deg]
roll_nom	39.498970870322	Nominal Roll [deg]
revision	3	Processing version of data
ontime	18866.51796332	Sum of GTIs [s]
livetime	18620.013016801	Livetime [s]
ontime0	18872.799963683	Sum of GTIs [s]
ontime1	18863.3770428	Sum of GTIs [s]
ontime2	18869.658973545	Sum of GTIs [s]
ontime3	18866.51796332	Sum of GTIs [s]
ontime6	18872.799963683	Sum of GTIs [s]
l2events	42142	Number of level 2 events



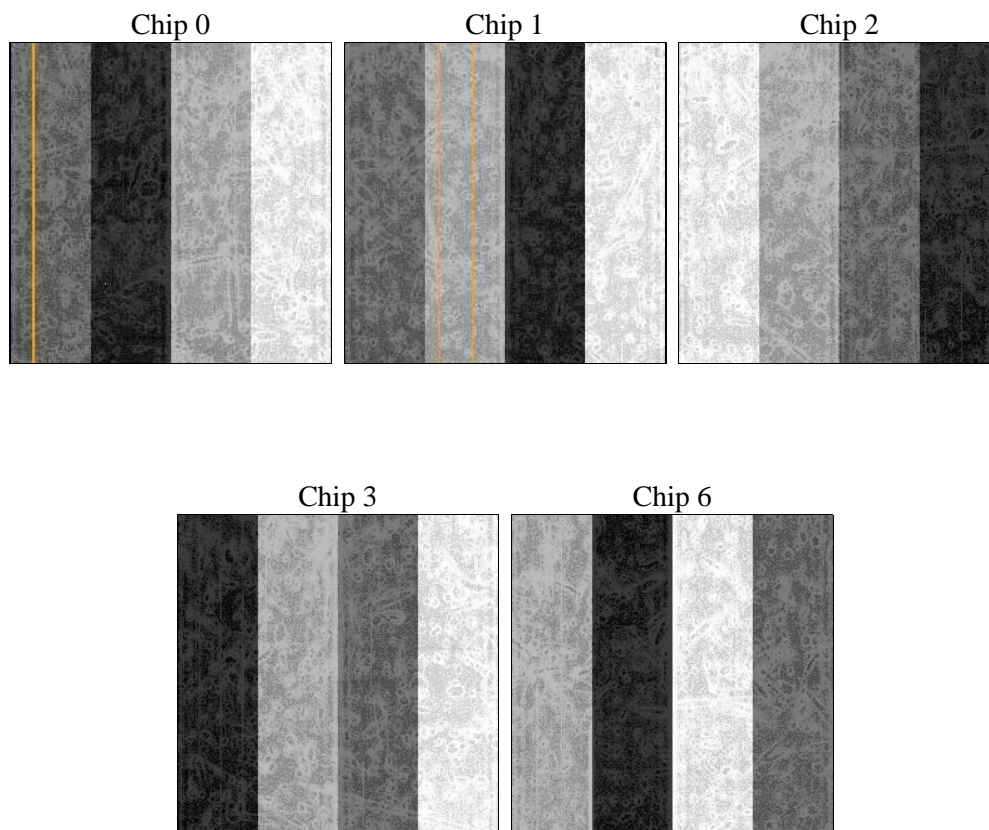
2 OBI

2.1 OBI

2.1.1 Images



2.1.2 Bias



2.1.3 Parameters

obi_num	0	Obi number	sched_exp_time	18751.000000	[s] Scheduled observation exposure time
ascdsver	8.4.5	Processing system revision	ontime	18866.51796332	Sum of GTIs [s]
caldsver	4.5.2	 	ontime0	18872.799963683	Sum of GTIs [s]
date	2012-11-11T16:55:02	Date and time of file creation	ontime1	18863.3770428	Sum of GTIs [s]
revision	3	Processing version of data	ontime2	18869.658973545	Sum of GTIs [s]
			ontime3	18866.51796332	Sum of GTIs [s]
			ontime6	18872.799963683	Sum of GTIs [s]
			l1events	468650	Number of level 1 events

2.1.4 Events

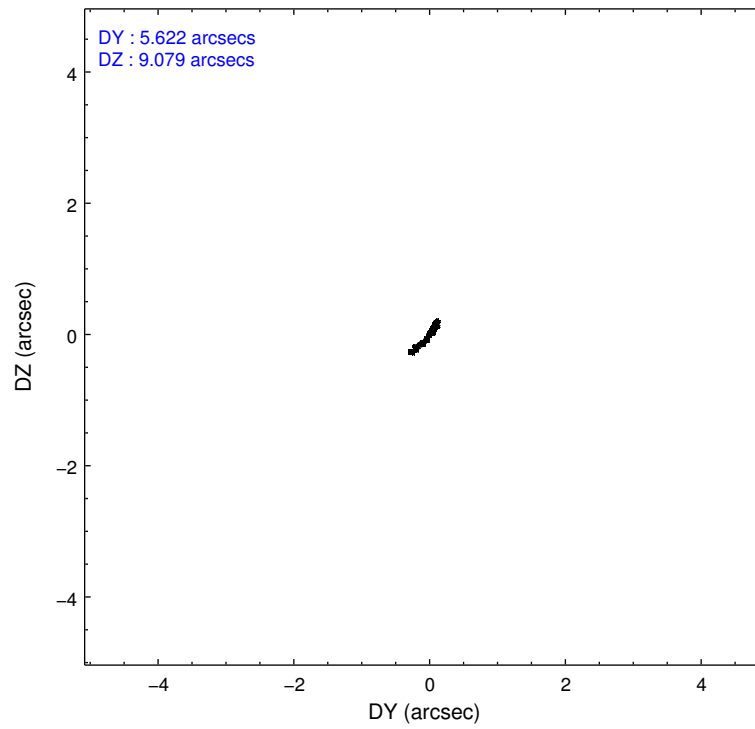
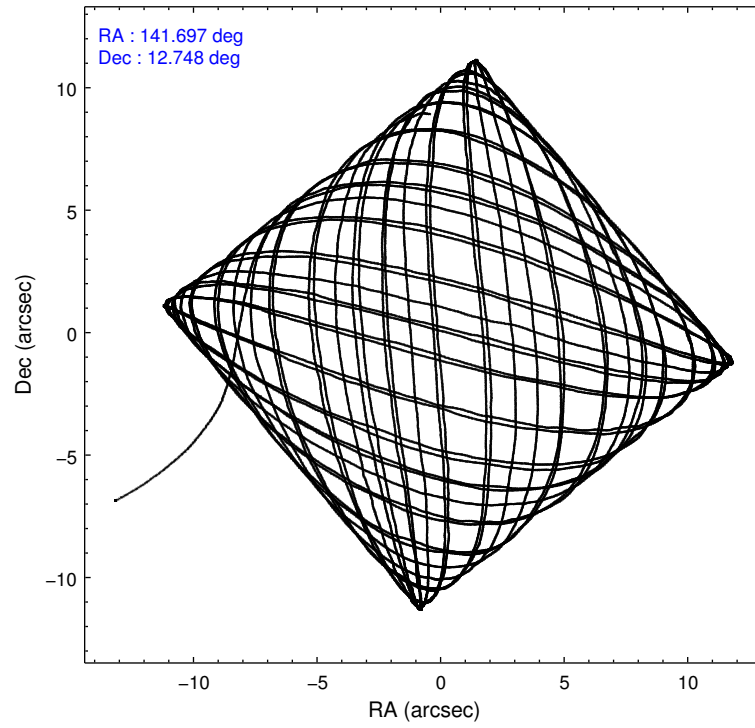
	ccd 0	ccd 1	ccd 2	ccd 3	ccd 6
level 1 events	88902	88582	98602	97774	94790
rejected events	79237	77559	89160	87426	84813
rejected %	89%	87%	90%	89%	89%

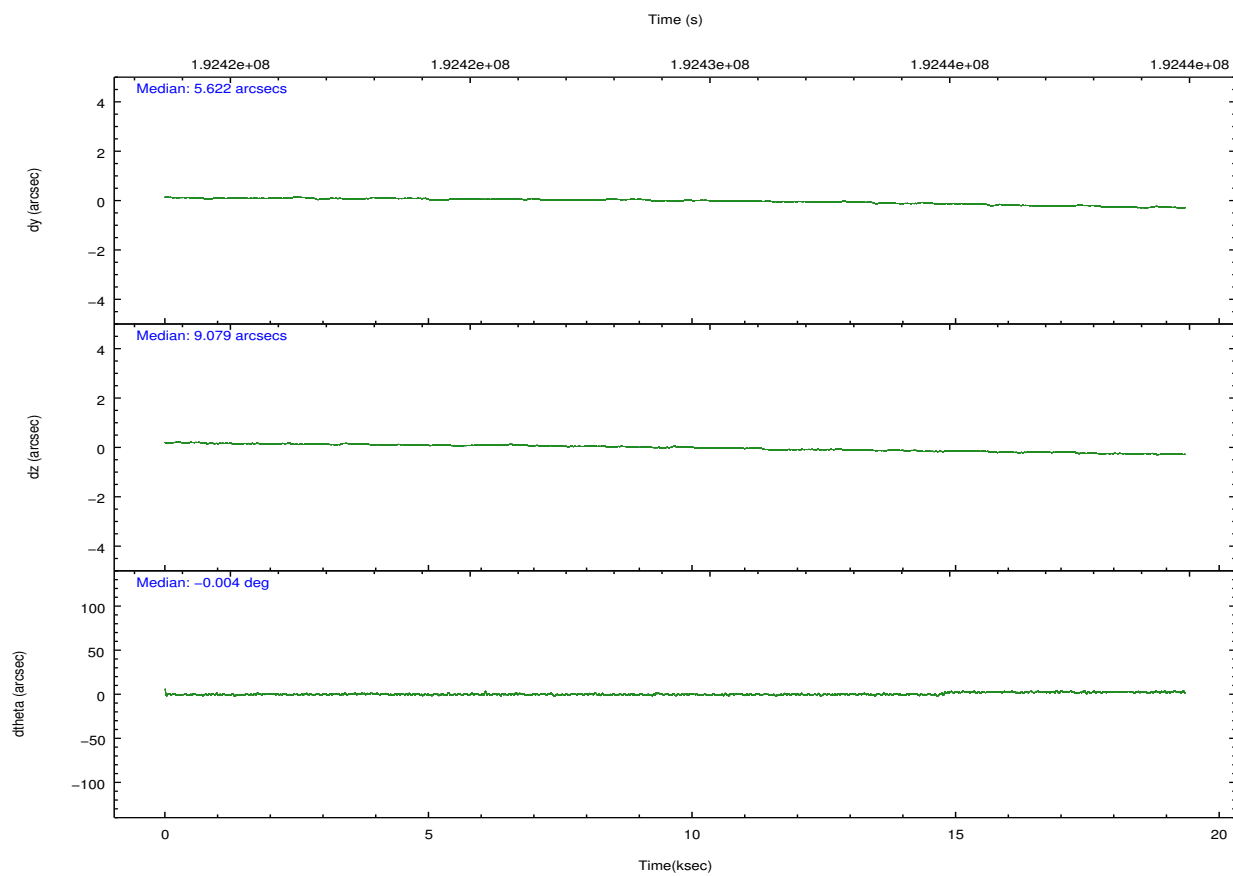
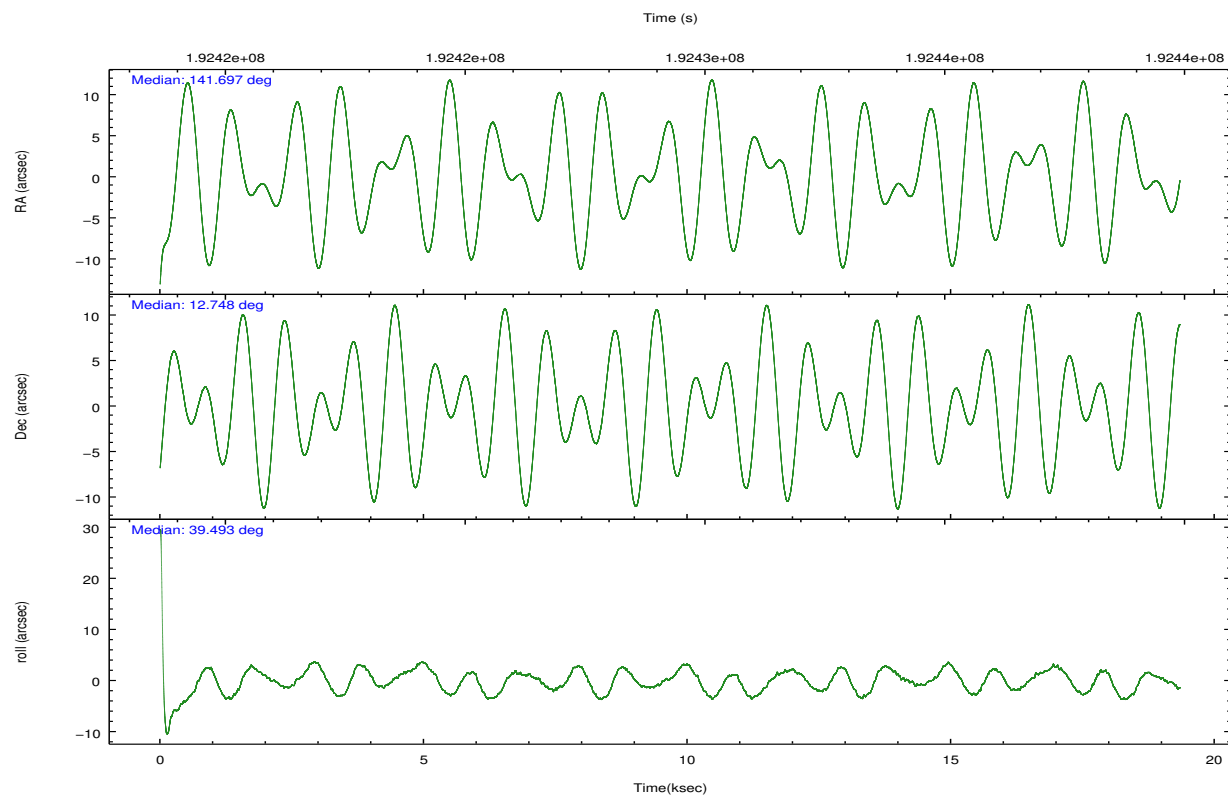
	ccd 0	ccd 1	ccd 2	ccd 3	ccd 6
grade 0 events	3438	4025	3398	4084	3584
	3%	4%	3%	4%	3%
grade 1 events	41	38	52	65	52
	0%	0%	0%	0%	0%
grade 2 events	2213	2326	2214	2121	2128
	2%	2%	2%	2%	2%
grade 3 events	1110	1227	1050	1120	1076
	1%	1%	1%	1%	1%
grade 4 events	1088	1259	1064	1145	1122
	1%	1%	1%	1%	1%
grade 5 events	3559	3782	3303	3818	3925
	4%	4%	3%	3%	4%
grade 6 events	1818	2190	1716	1881	2067
	2%	2%	1%	1%	2%
grade 7 events	75635	73735	85805	83540	80836
	85%	83%	87%	85%	85%

2.2 Compared Parameters

Parameter	Planned	Actual	Parameter	Planned	Actual
Instrument	ACIS	ACIS	Obspar format version number	7	7
Detector	ACIS-01236	ACIS-01236	Obspar file type	PREDICTED	ACTUAL
Grating	NONE	NONE	Obspar update status	NONE	UPDATED
Data mode	VFAINT	VFAINT	Number of optional ACIS chips dropped	0	0
Observation mode	POINTING	POINTING	On-chip summing requested	N	N
[deg] Pointing RA	141.686998	141.6967134893881	Subarray requested	NONE	NONE
[deg] Pointing Dec	12.722846	12.74855919406614	Alternating exposures requested	N	N
[deg] Pointing Roll	39.292399	39.49897087032228	[s] Primary exposure time	0.000000	3.1
[mm] SIM focus pos	-0.782348	-0.7809083437167272			
[mm] SIM defocus	0	0.001439871863259334			
[mm] SIM translation stage pos	-225.840463	-225.8433433320239			
[mm] SIM translation stage offset	-7.752	-7.749109670905796			
[s] Observation start time (MET)	192420200.184000	192419034.28386			
Observation start date	2004-02-06T02:02:16	2004-02-06T01:43:54			
[s] Observation end time (MET)	192438951.184000	192440739.68481			
Observation end date	2004-02-06T07:14:47	2004-02-06T07:45:39			
Read mode	TIMED	TIMED			

2.3 Aspect



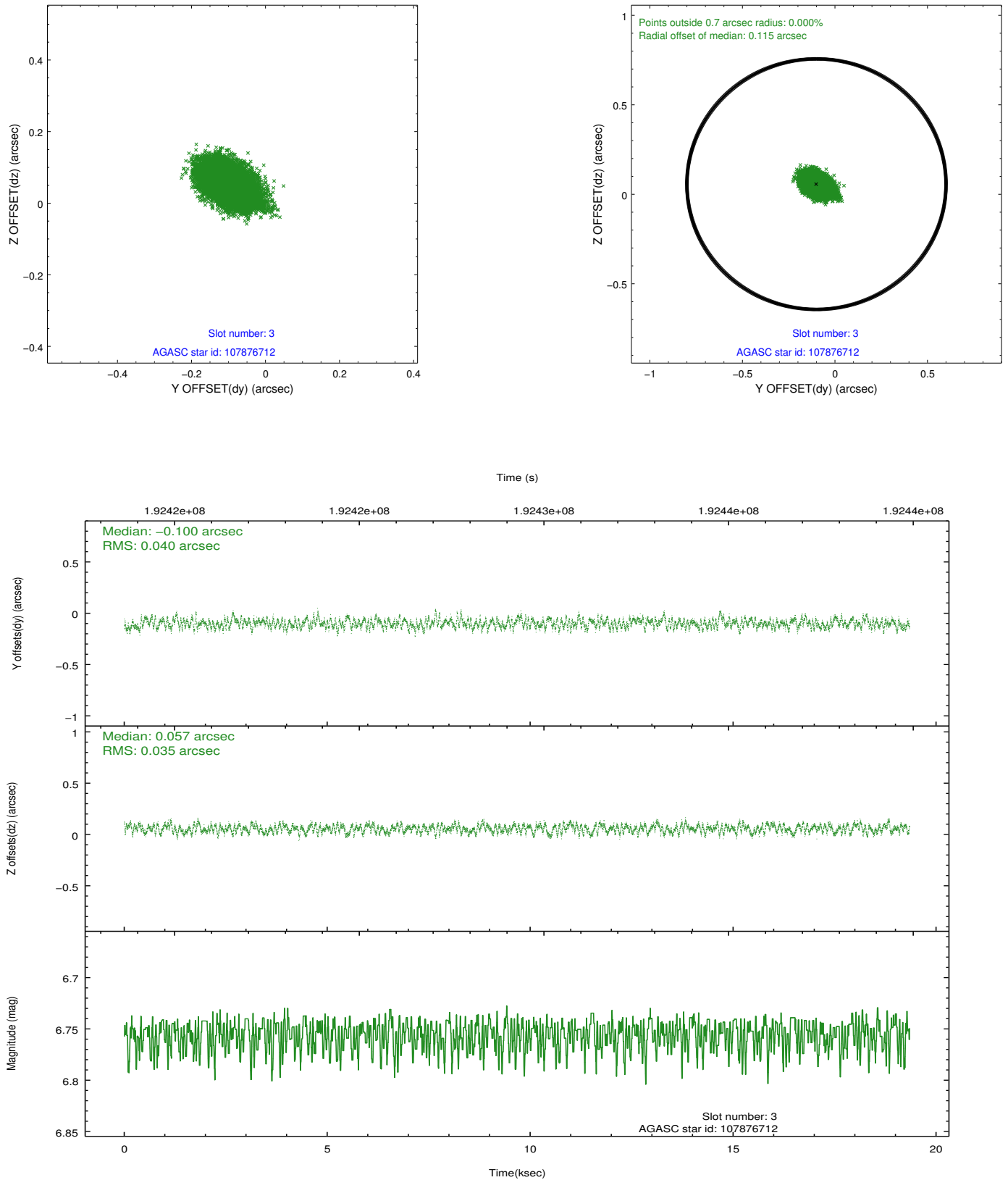


Slot Statistics

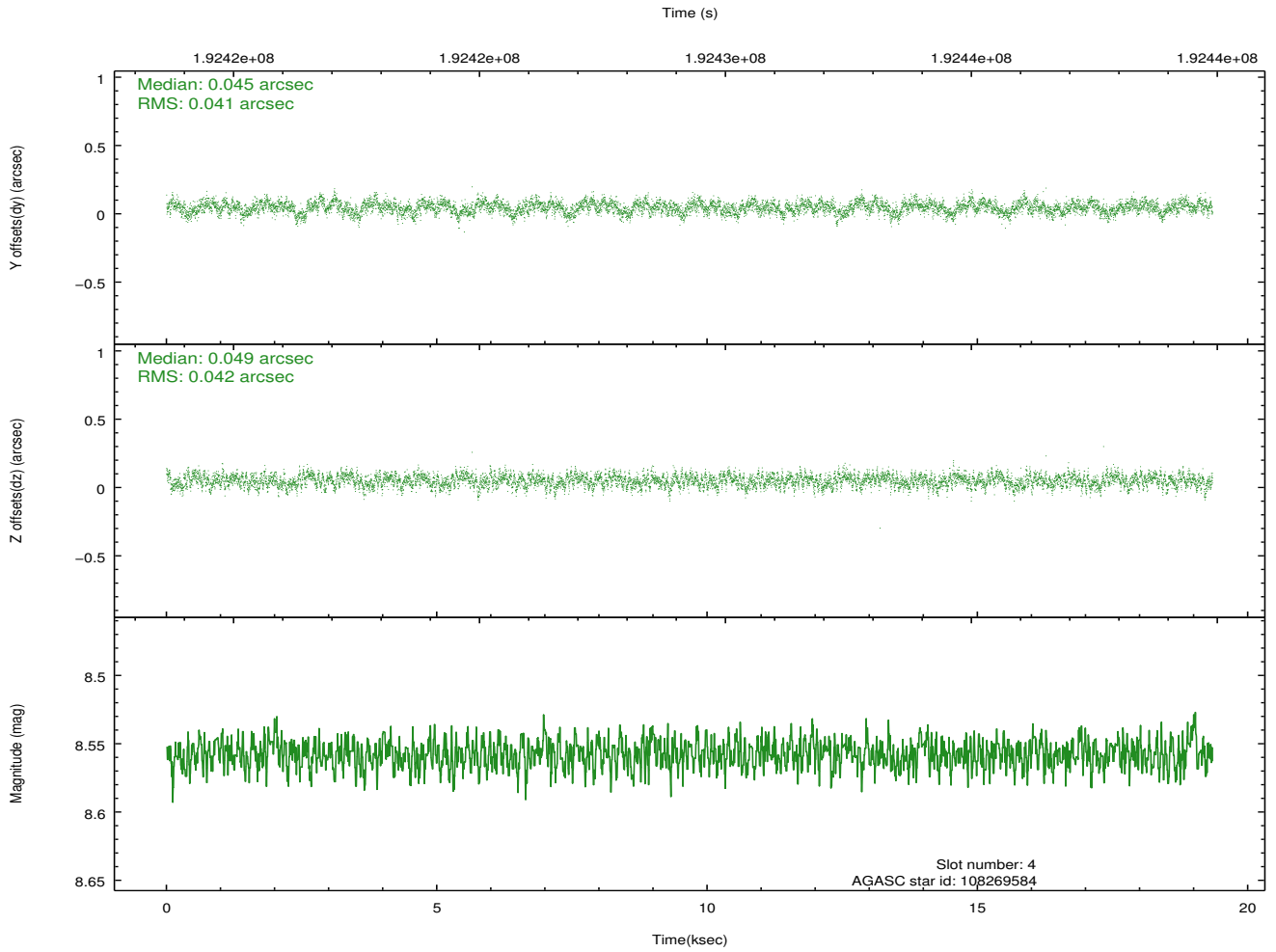
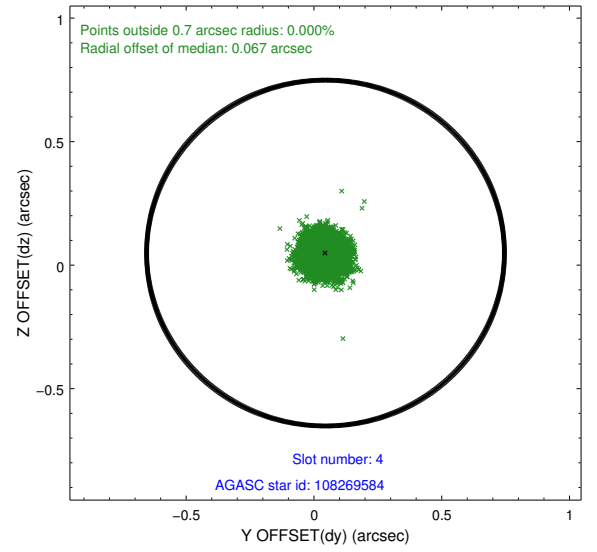
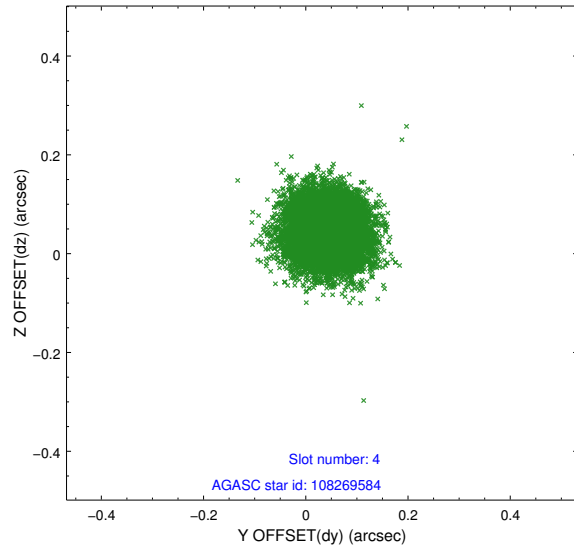
slot	status	id	mag	n_pts	med_dy	med_dz	dr1	dr2	ra	dec	mean_y	mean_z
0	FID	ACIS-I-2	7.17	4719	-0.063	-0.062	0.010	0.017	0.000000	0.000000	-760.63	-997.00
1	FID	ACIS-I-4	7.15	4719	0.070	0.059	0.007	0.014	0.000000	0.000000	2153.39	909.18
2	FID	ACIS-I-5	7.21	4719	-0.107	0.073	0.012	0.021	0.000000	0.000000	-1813.89	906.19
3	GUIDE	107876712	6.75	9438	-0.100	0.057	0.057	0.091	142.139443	12.385311	462.77	-1946.50
4	GUIDE	108269584	8.56	9436	0.045	0.049	0.062	0.099	141.684428	12.507889	-496.64	-593.49
5	GUIDE	108273032	9.08	9434	0.019	-0.123	0.082	0.136	141.083954	12.520007	-2100.80	778.51
6	GUIDE	108273952	7.81	9433	-0.007	0.047	0.050	0.081	142.111925	12.674985	1046.27	-1077.36
7	GUIDE	108274152	9.76	9424	0.048	-0.027	0.102	0.167	141.688562	13.371909	1484.13	1805.08

2.4 Star Slots

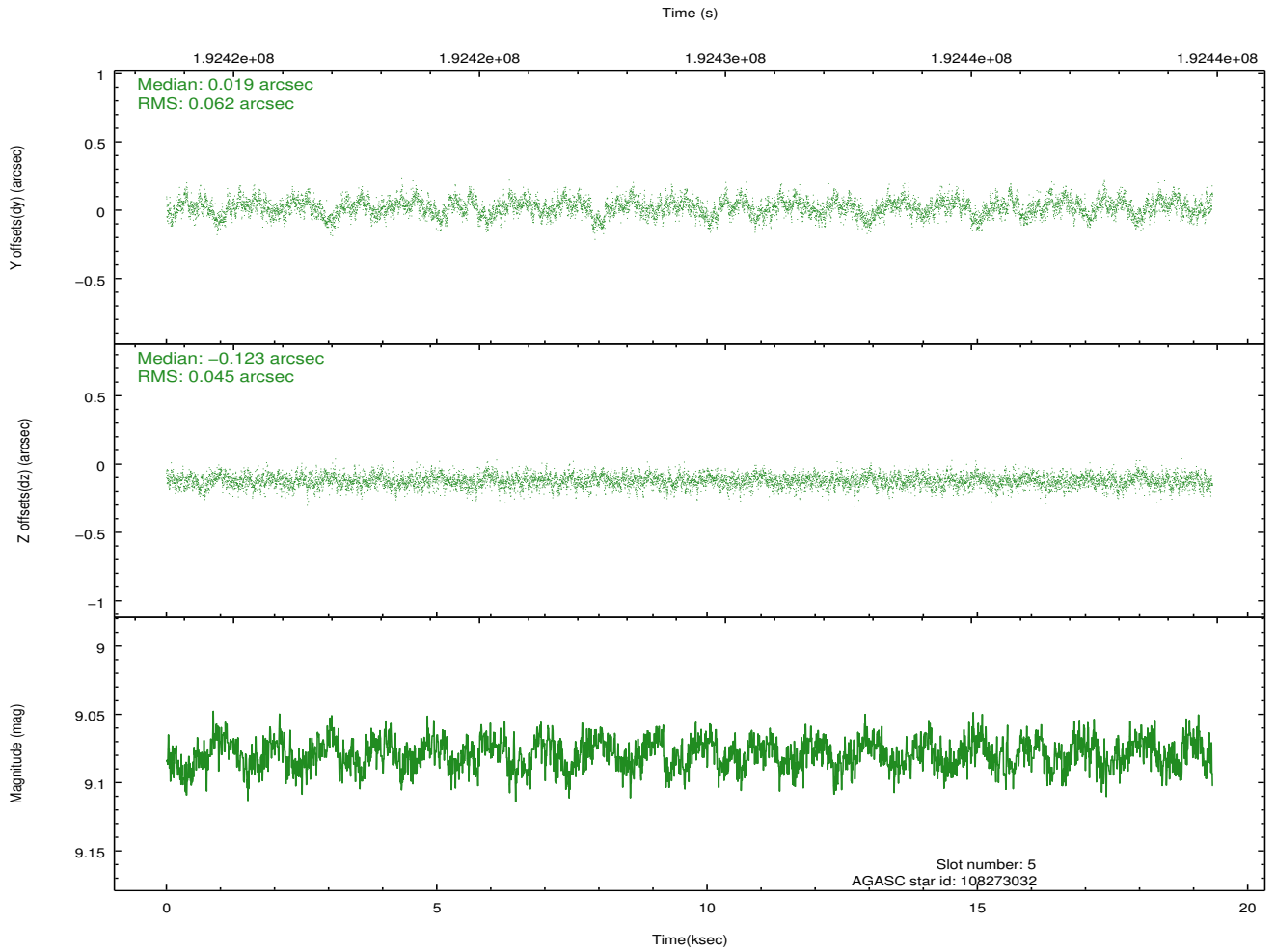
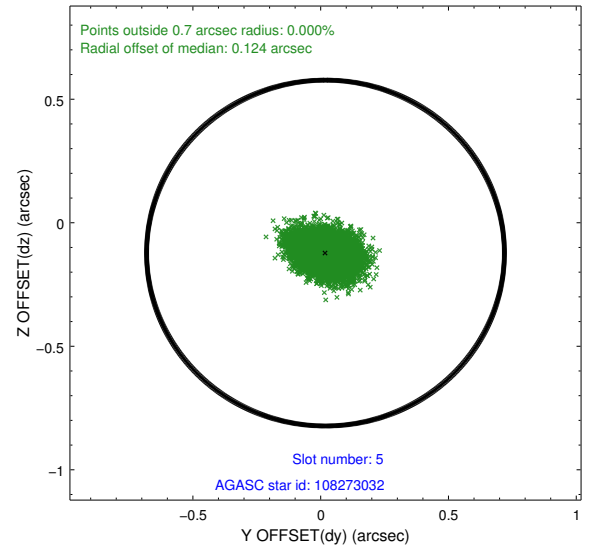
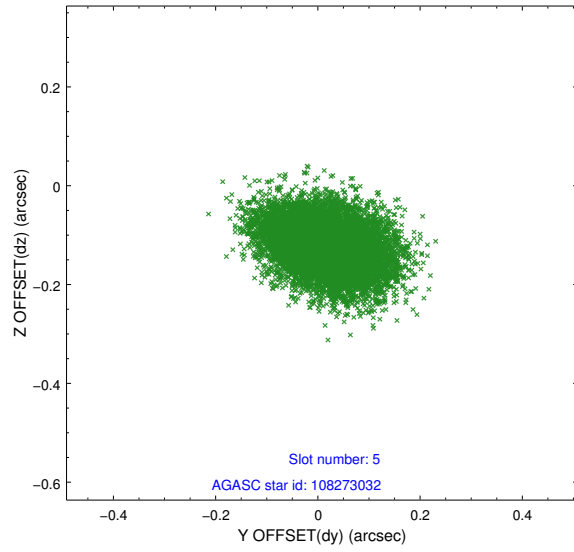
2.4.1 Slot 3



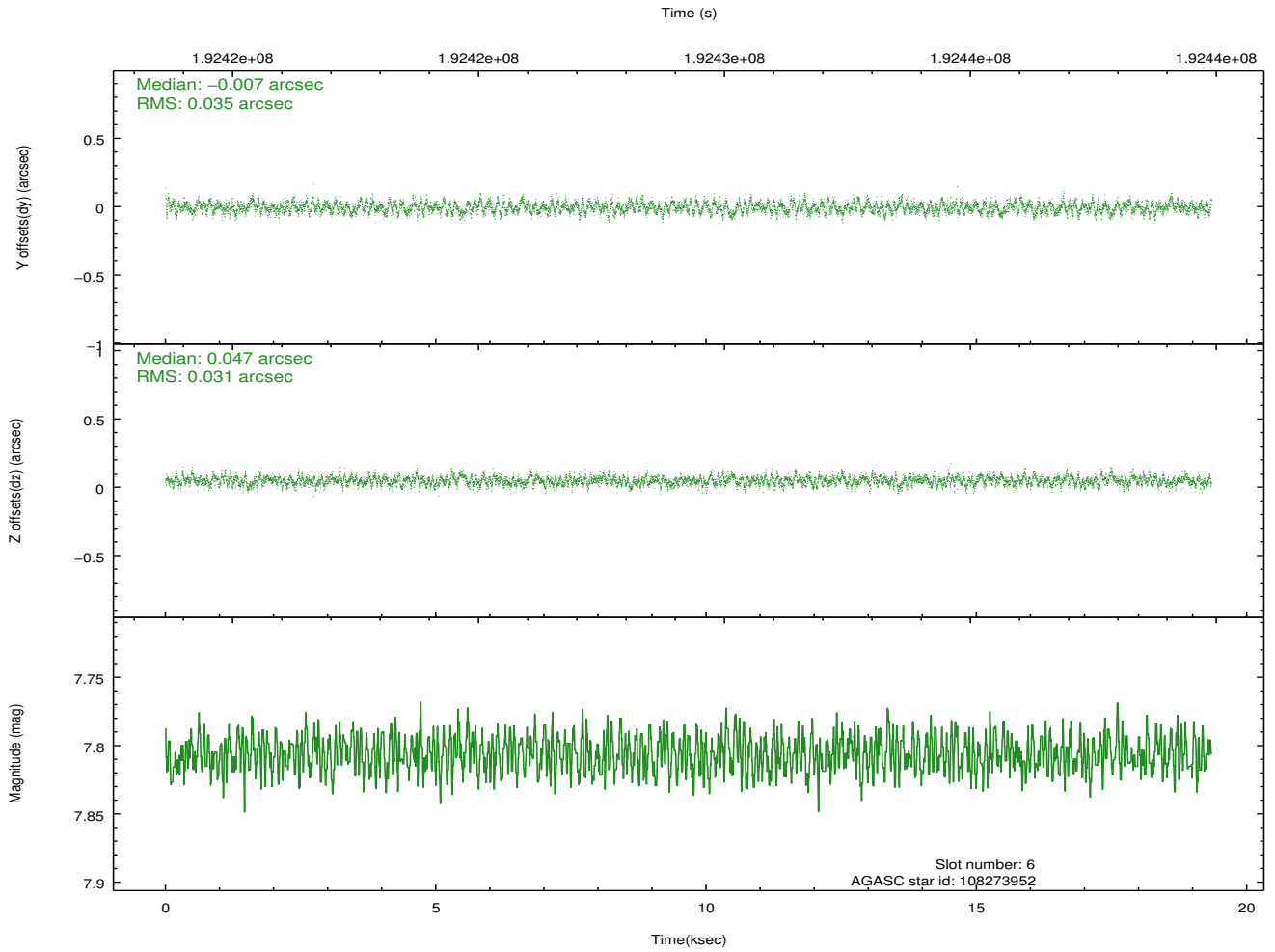
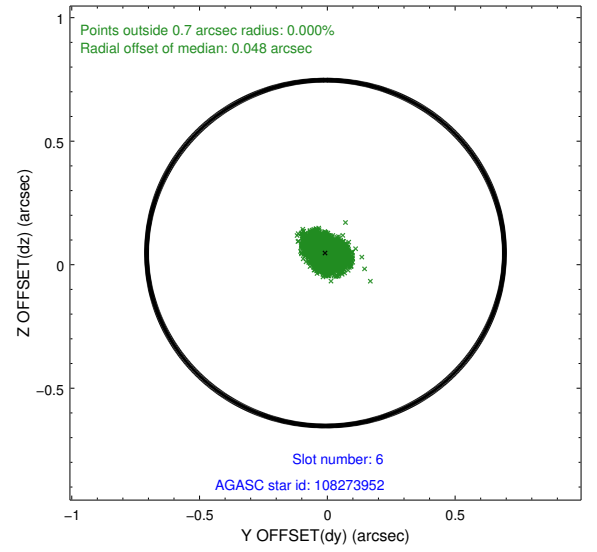
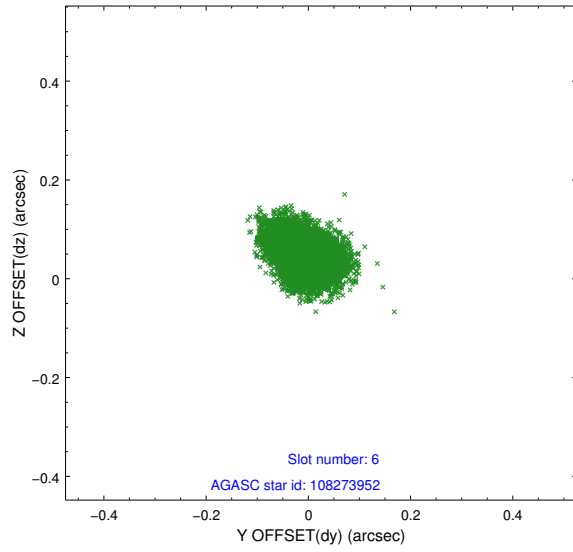
2.4.2 Slot 4



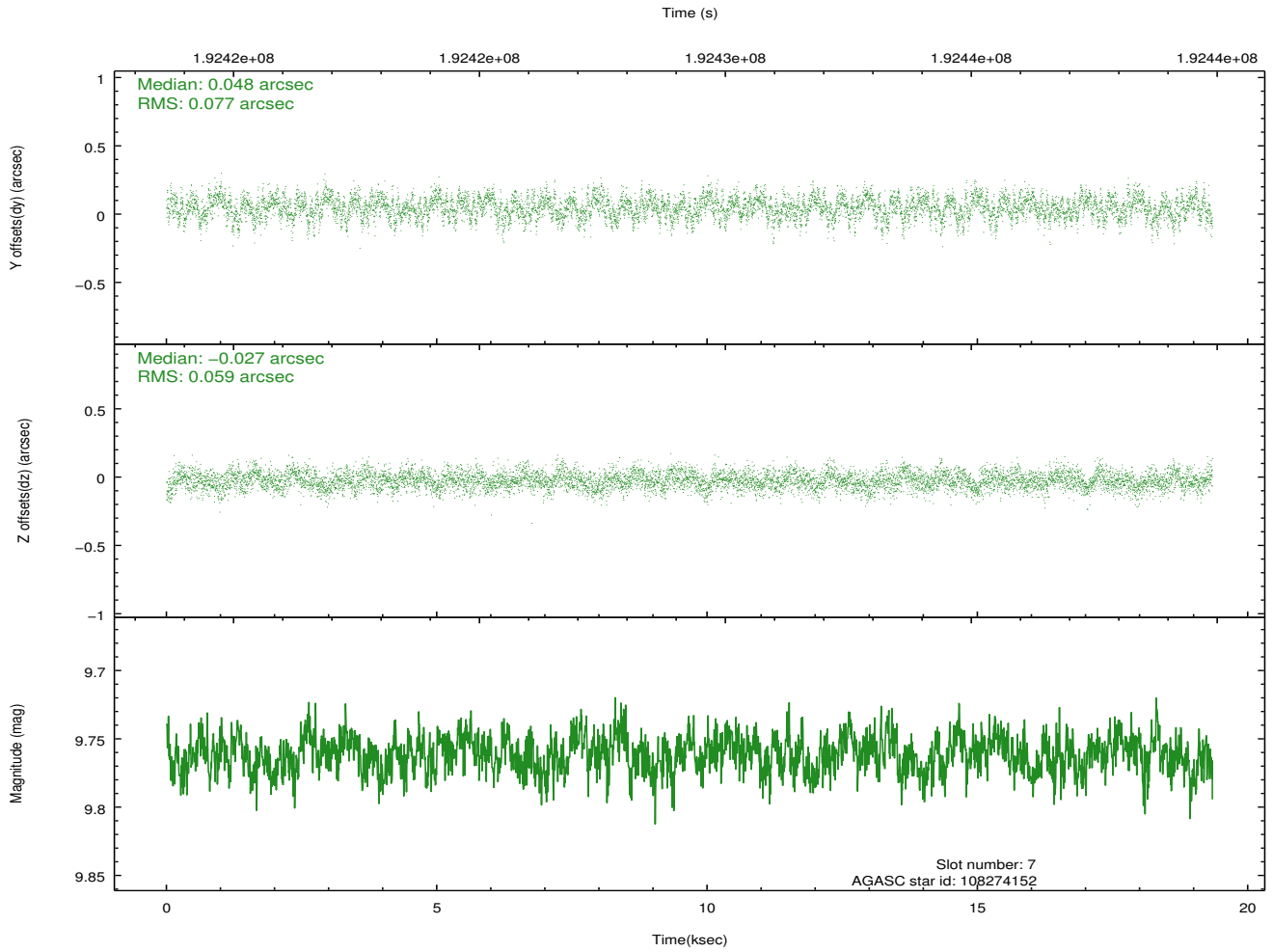
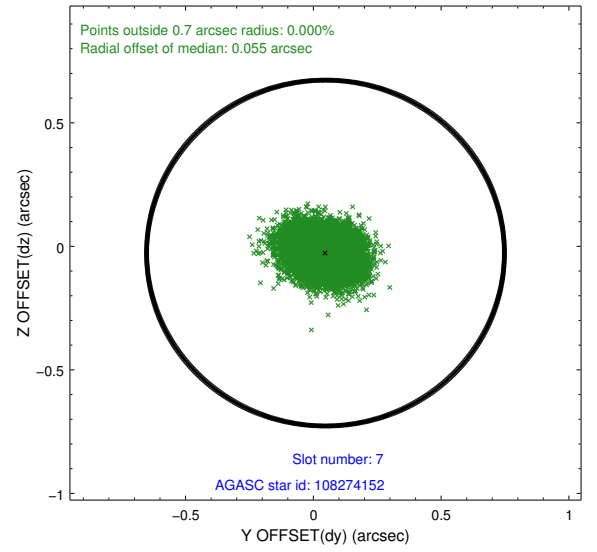
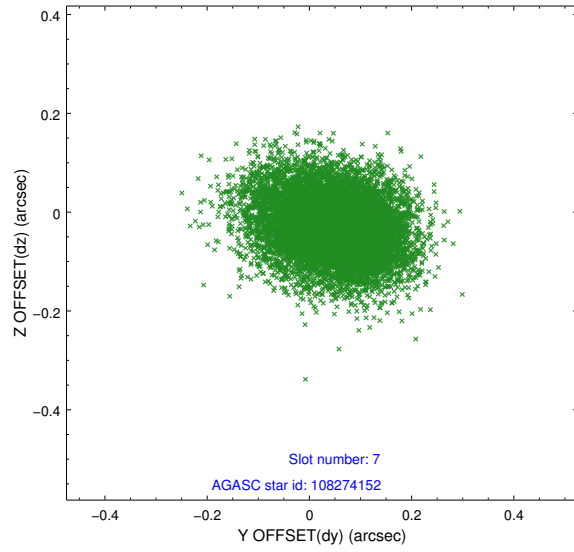
2.4.3 Slot 5



2.4.4 Slot 6

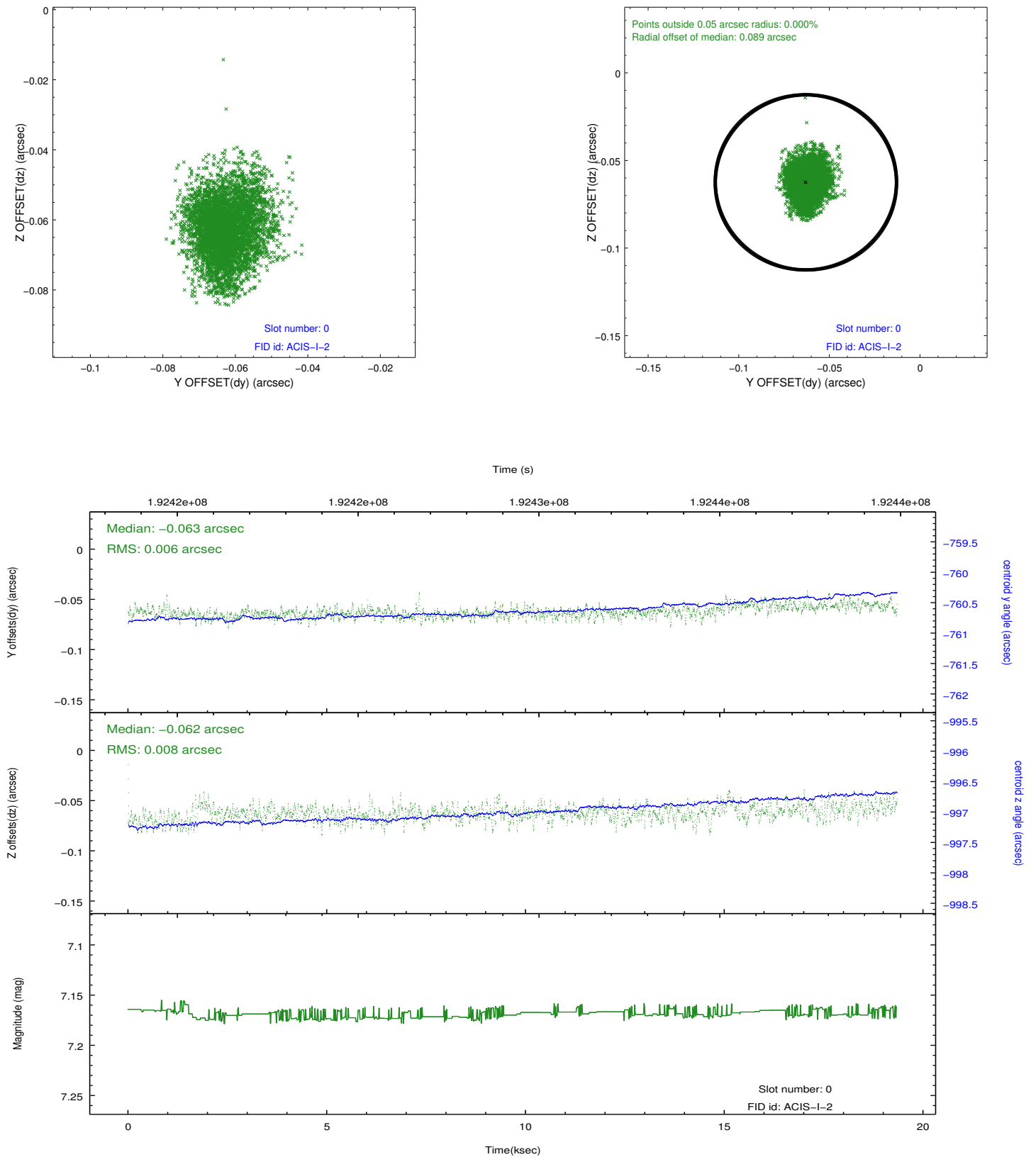


2.4.5 Slot 7

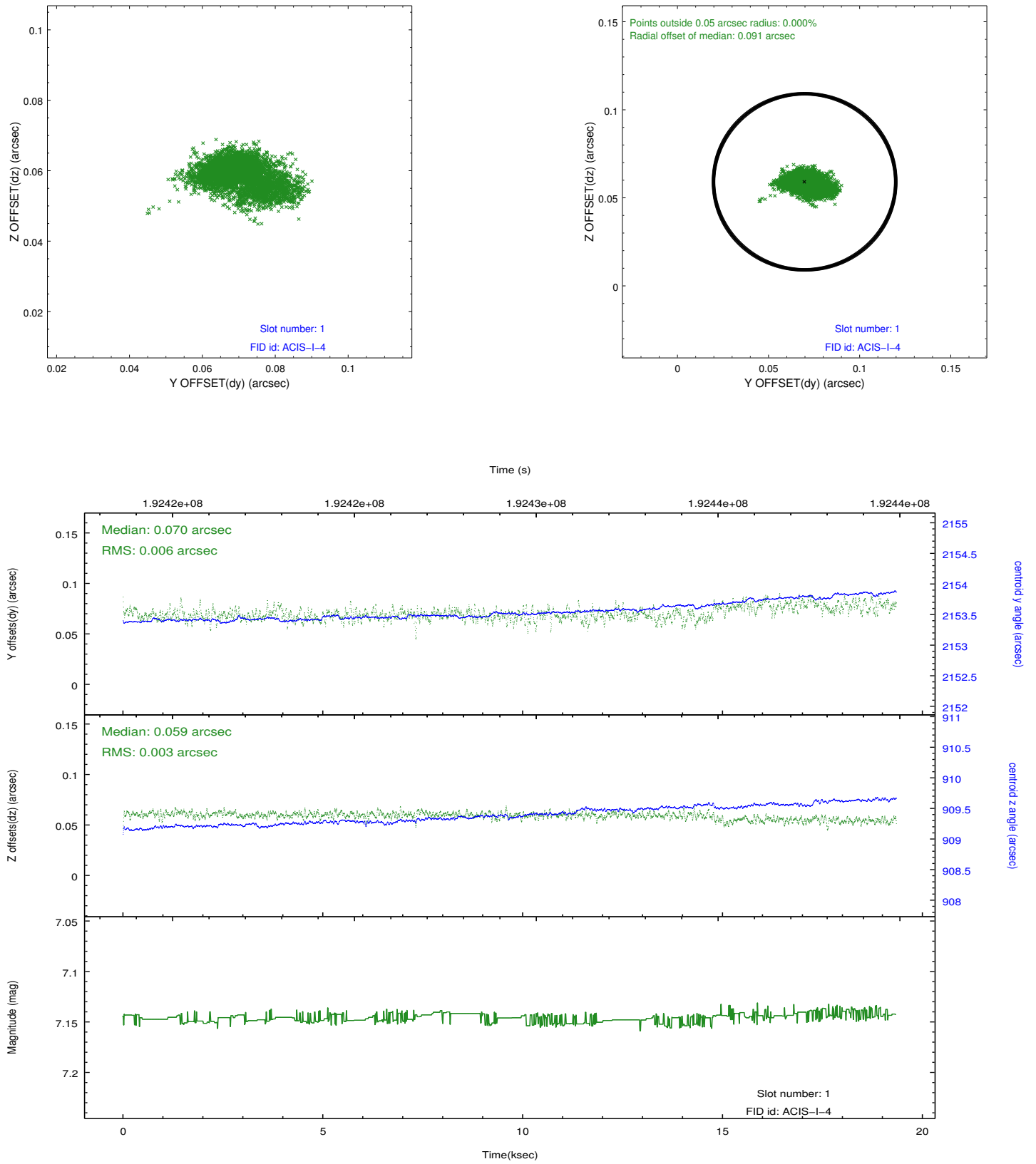


2.5 FID Slots

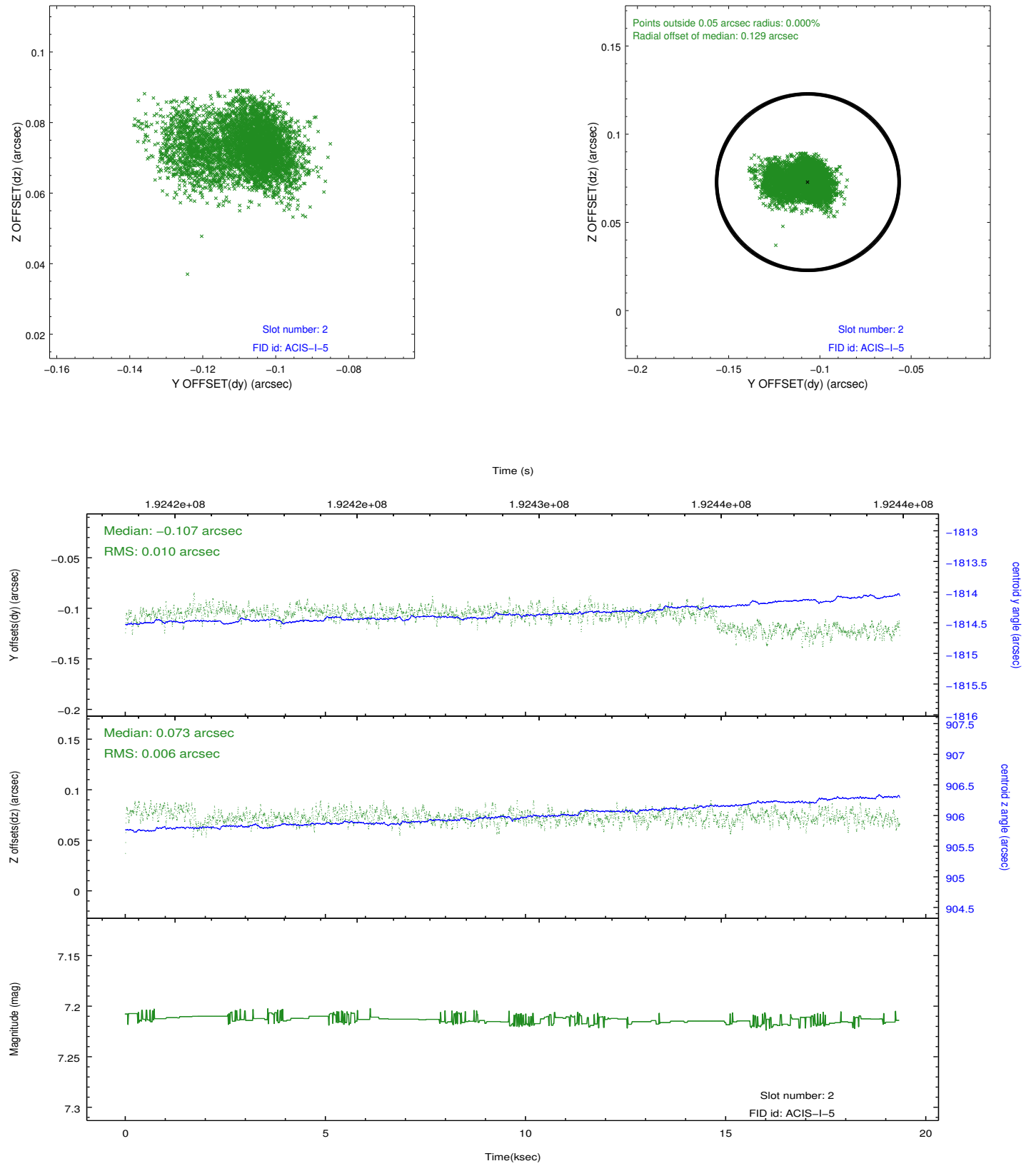
2.5.1 Slot 0



2.5.2 Slot 1



2.5.3 Slot 2



A Summary

A.1 Status

V&V Scientist	Jen Lauer
V&V Date (YYYY-MM-DD)	2012.12.11
V&V Edition	1
V&V Disposition and Status	OK
V&V Charge Time	18.869

A.2 Comments