

# V&V Reference Report

## L2 ASCDS Version : 7.6.7.2

Observation 4929 - L2 Version 001  
Chandra X-Ray Center

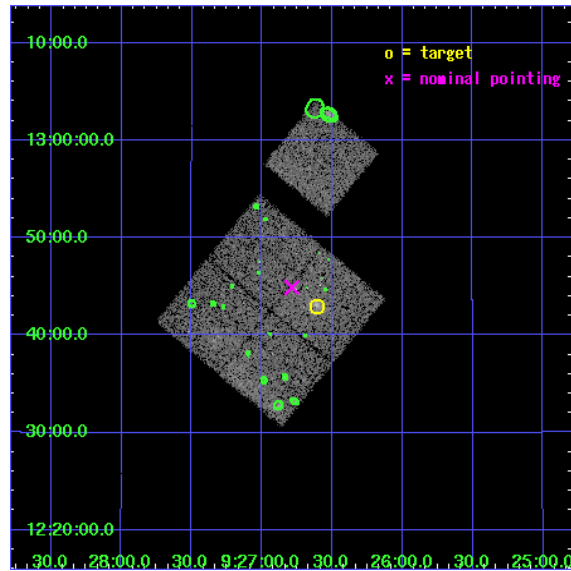
L2 Processing Date : Jun 4 2006

## Contents

<b>1</b>	<b>Front</b>	<b>2</b>
<b>2</b>	<b>OBI</b>	<b>3</b>
2.1	OBI . . . . .	3
2.1.1	Images . . . . .	3
2.1.2	Bias . . . . .	3
2.1.3	Parameters . . . . .	4
2.1.4	Events . . . . .	4
2.2	Compared Parameters . . . . .	5
2.3	Aspect . . . . .	6
2.4	Star Slots . . . . .	9
2.4.1	Slot 3 . . . . .	9
2.4.2	Slot 4 . . . . .	10
2.4.3	Slot 5 . . . . .	11
2.4.4	Slot 6 . . . . .	12
2.4.5	Slot 7 . . . . .	13
2.5	FID Slots . . . . .	14
2.5.1	Slot 0 . . . . .	14
2.5.2	Slot 1 . . . . .	15
2.5.3	Slot 2 . . . . .	16
<b>3</b>	<b>Point Sources</b>	<b>17</b>
<b>A</b>	<b>Summary</b>	<b>18</b>
A.1	Status . . . . .	18
A.2	Comments . . . . .	18

# 1 Front

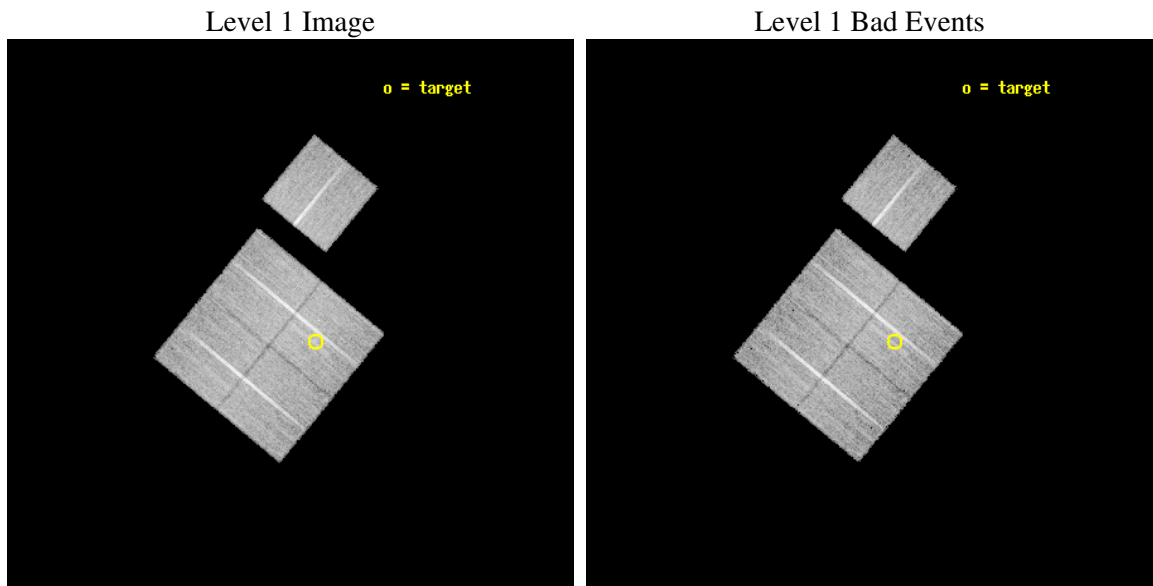
seq_num	800380
obs_id	4929
title	Chandra snapshot survey of 10 distant clusters of galaxies
observer	Dr. Stephen Murray
object	CL0926p1242
dtcycle	0
cycle	P
ra_targ	141.6525
dec_targ	12.715556
ra_nom	141.69669145195
dec_nom	12.748541602262
roll_nom	39.498975725083
revision	2
ontime	18866.51796335
livetime	18620.01301683
ontime0	18872.799963713
ontime1	18863.37704283
ontime2	18869.658973575
ontime3	18866.51796335
ontime6	18872.799963713
l2events	42298



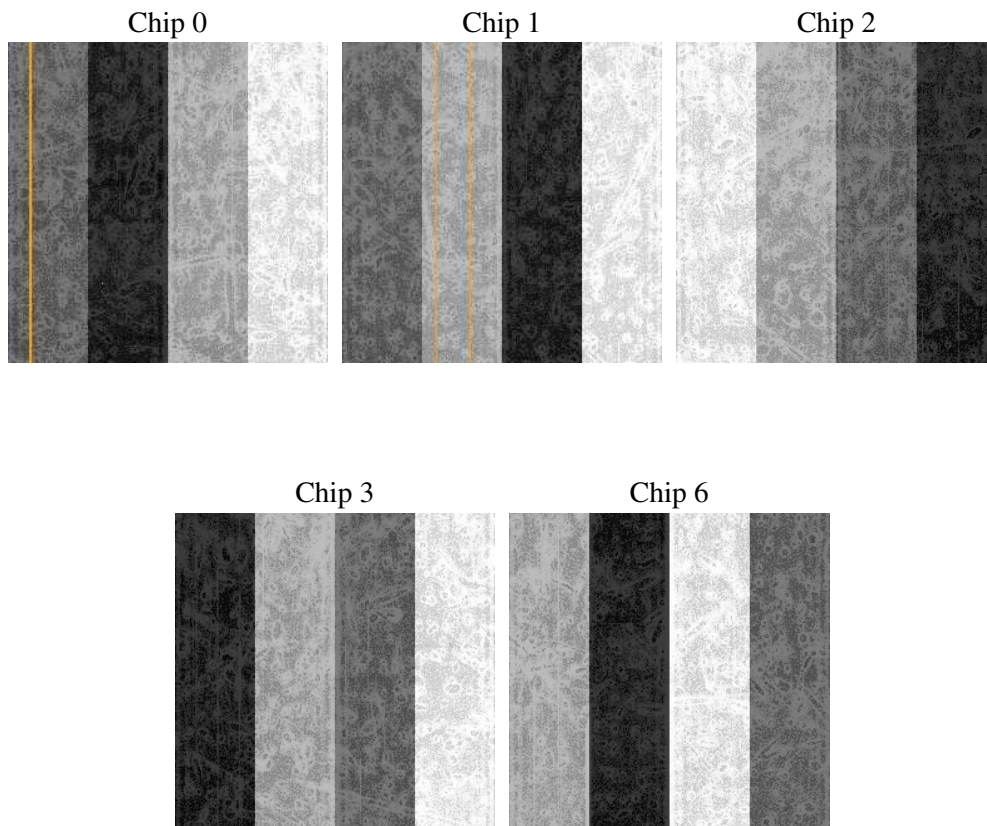
## 2 OBI

### 2.1 OBI

#### 2.1.1 Images



#### 2.1.2 Bias



### 2.1.3 Parameters

obi_num	0
ascdsver	7.6.7.2
caldbver	3.2.2
date	2006-06-04T12:42:12
revision	2

sched_exp_time	18751.000000
ontime	18871.182105154
ontime0	18877.464105517
ontime1	18868.041184634
ontime2	18874.323115379
ontime3	18871.182105154
ontime6	18877.464105517
l1events	468650

### 2.1.4 Events

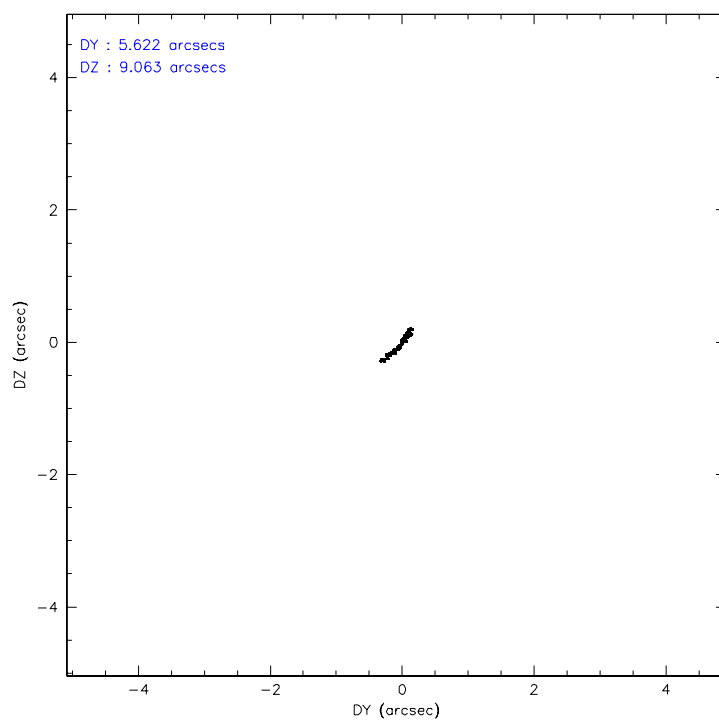
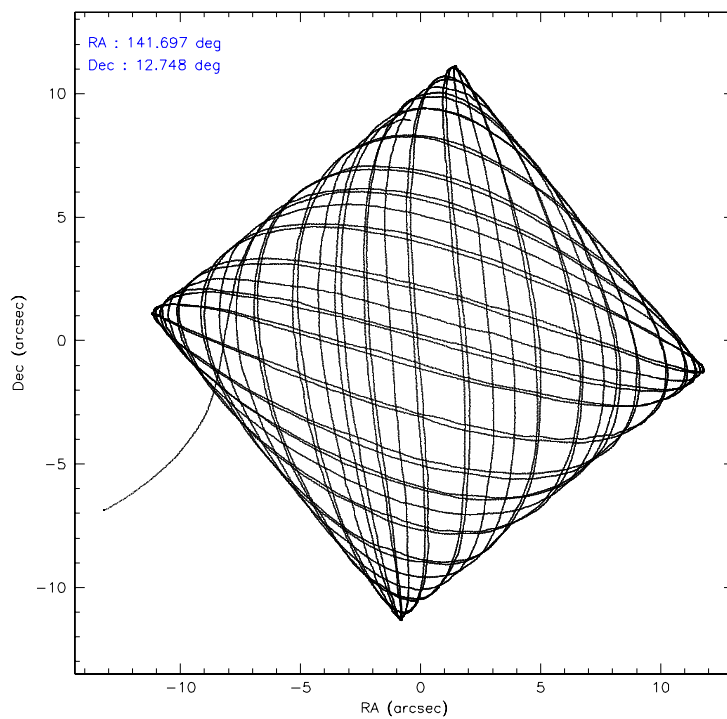
	ccd 0	ccd 1	ccd 2	ccd 3	ccd 6
level 1 events	88902	88582	98602	97774	94790
rejected events	79237	77563	89161	87429	84815
rejected %	89%	87%	90%	89%	89%

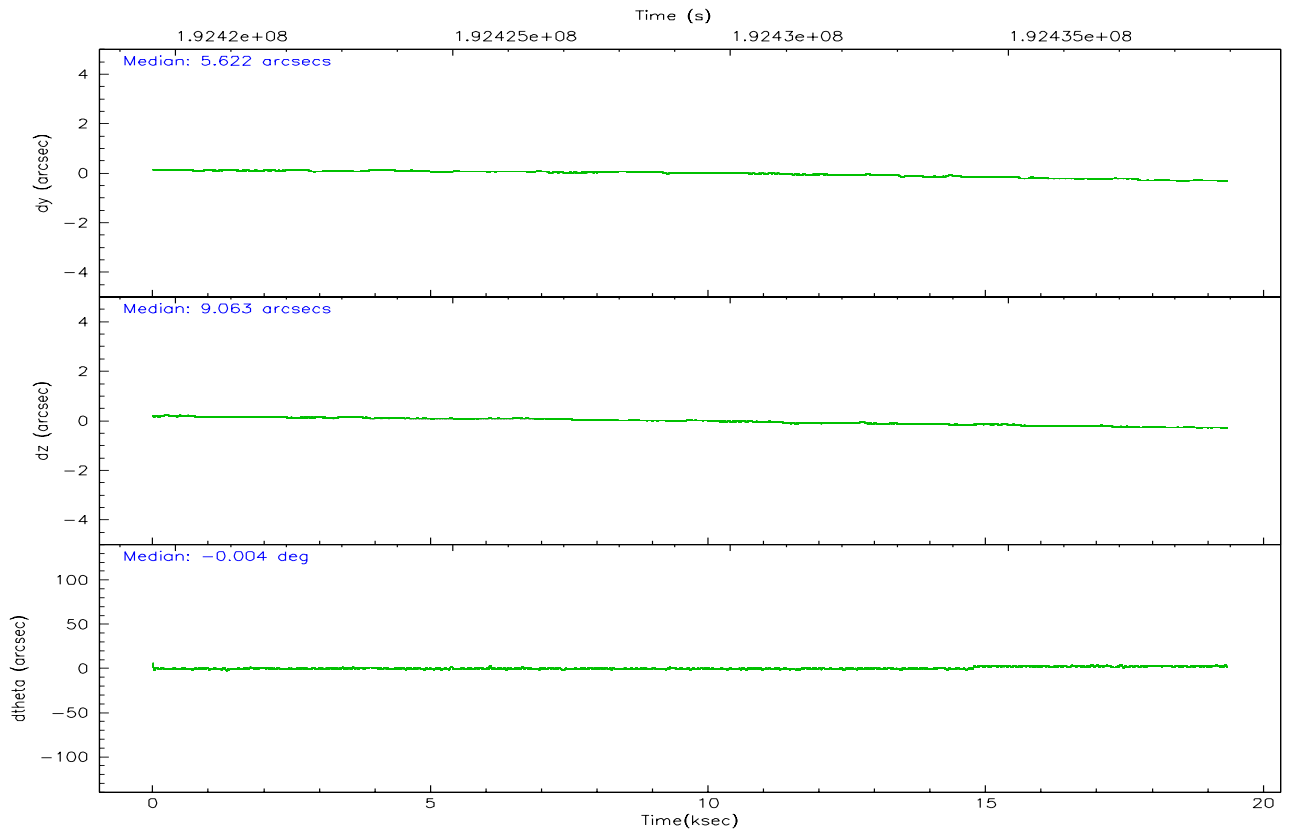
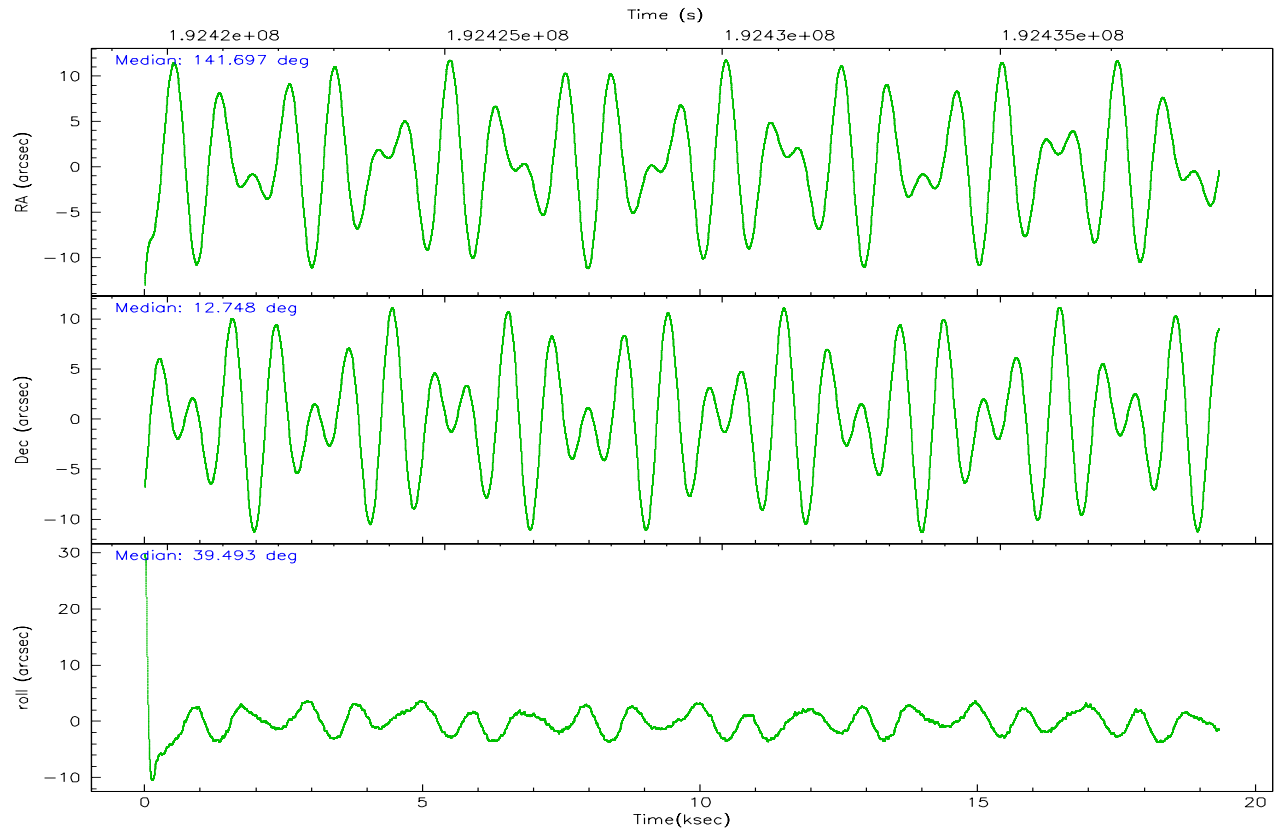
	ccd 0	ccd 1	ccd 2	ccd 3	ccd 6
grade 0 events	3438	4025	3398	4084	3584
	3%	4%	3%	4%	3%
grade 1 events	41	38	52	65	52
	0%	0%	0%	0%	0%
grade 2 events	2213	2326	2214	2121	2128
	2%	2%	2%	2%	2%
grade 3 events	1109	1227	1050	1120	1076
	1%	1%	1%	1%	1%
grade 4 events	1088	1259	1064	1145	1122
	1%	1%	1%	1%	1%
grade 5 events	3559	3782	3303	3818	3925
	4%	4%	3%	3%	4%
grade 6 events	1819	2190	1716	1881	2067
	2%	2%	1%	1%	2%
grade 7 events	75635	73735	85805	83540	80836
	85%	83%	87%	85%	85%

## 2.2 Compared Parameters

Parameter	Planned	Actual	Parameter	Planned	Actual
Instrument	ACIS	ACIS	Obspar format version number	6	6
Detector	ACIS-01236	ACIS-01236	Obspar file type	PREDICTED	ACTUAL
Grating	NONE	NONE	Obspar update status	NONE	UPDATED
Data mode	VFAINT	VFAINT	On-chip summing requested	N	N
Observation mode	POINTING	POINTING	Subarray requested	NONE	NONE
Pointing RA	141.686998	141.6966914519511	Alternating exposures requested	N	N
Pointing Dec	12.722846	12.74854160226224	Primary exposure time	0.000000	3.1
Pointing Roll	39.292399	39.49897572508284			
SIM focus pos (mm)	-0.782348	-0.7809083437167272			
SIM defocus (mm)	0	0.001439871863259334			
SIM translation stage pos (mm)	-225.840463	-225.8433433320239			
SIM translation stage offset (mm)	-7.752	-7.749109670905796			
Observation start time	192420200.184000	192419034.28386			
Observation start date	2004-02-06T02:02:16	2004-02-06T01:43:54			
Observation end time	192438951.184000	192440739.68481			
Observation end date	2004-02-06T07:14:47	2004-02-06T07:45:39			
Read mode	TIMED	TIMED			

## 2.3 Aspect





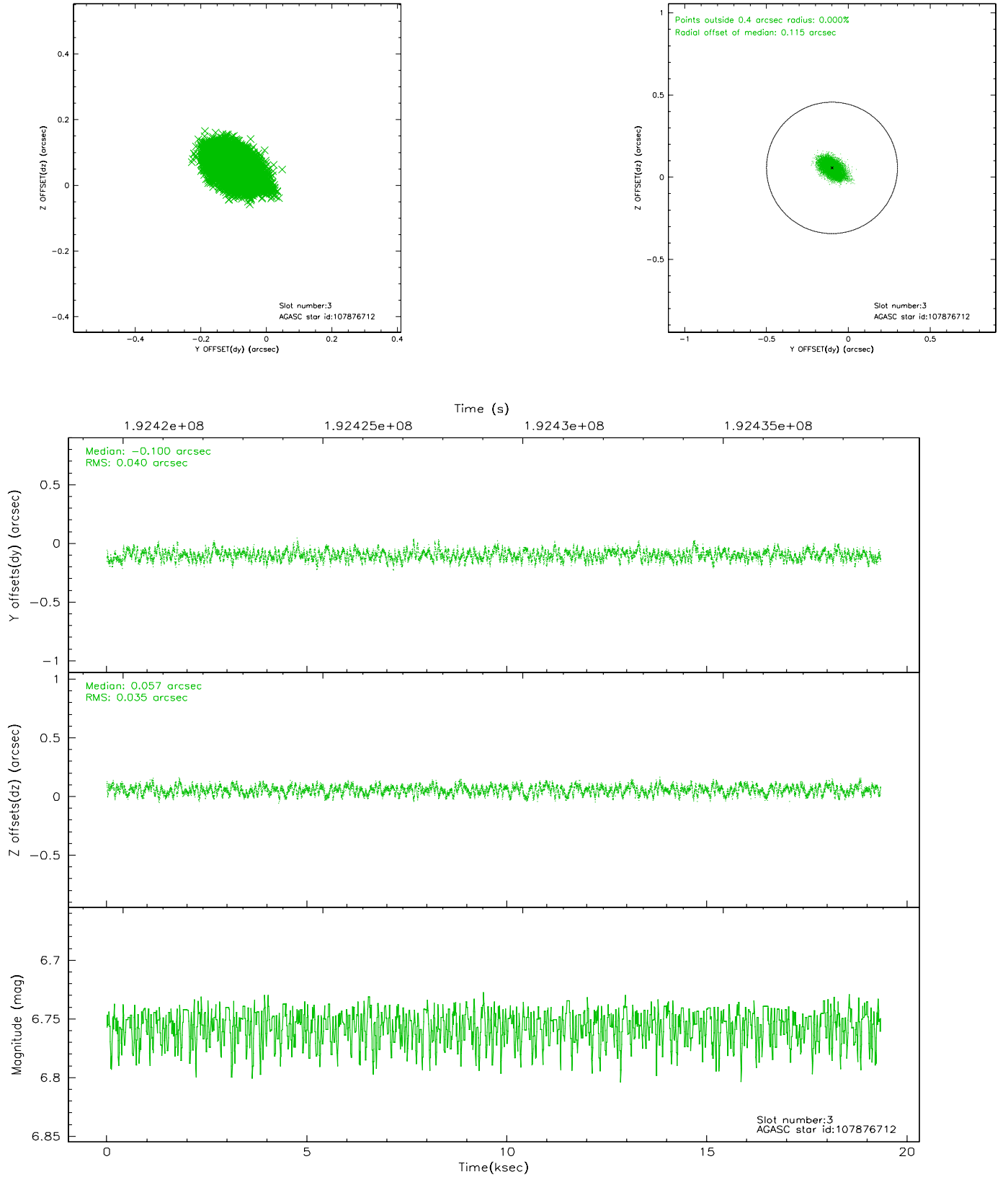
### Slot Statistics

slot	status	id	mag	n_pts	med_dy	med_dz	dr1	dr2	ra	dec	mean_y	mean_z
0	FID	ACIS-I-2	7.17	4719	-0.052	-0.039	0.010	0.017	0.000000	0.000000	-760.62	-996.96
1	FID	ACIS-I-4	7.15	4719	0.028	0.048	0.007	0.012	0.000000	0.000000	2153.35	909.19
2	FID	ACIS-I-5	7.21	4719	-0.076	0.061	0.011	0.019	0.000000	0.000000	-1813.85	906.20
3	GUIDE	107876712	6.75	9438	-0.100	0.057	0.057	0.091	142.139443	12.385311	462.77	-1946.50
4	GUIDE	108269584	8.56	9436	0.045	0.049	0.062	0.099	141.684428	12.507889	-496.64	-593.49
5	GUIDE	108273032	9.08	9434	0.019	-0.123	0.082	0.136	141.083954	12.520007	-2100.80	778.51
6	GUIDE	108273952	7.81	9433	-0.007	0.047	0.050	0.081	142.111925	12.674985	1046.27	-1077.36
7	GUIDE	108274152	9.76	9424	0.048	-0.027	0.102	0.167	141.688562	13.371909	1484.13	1805.08

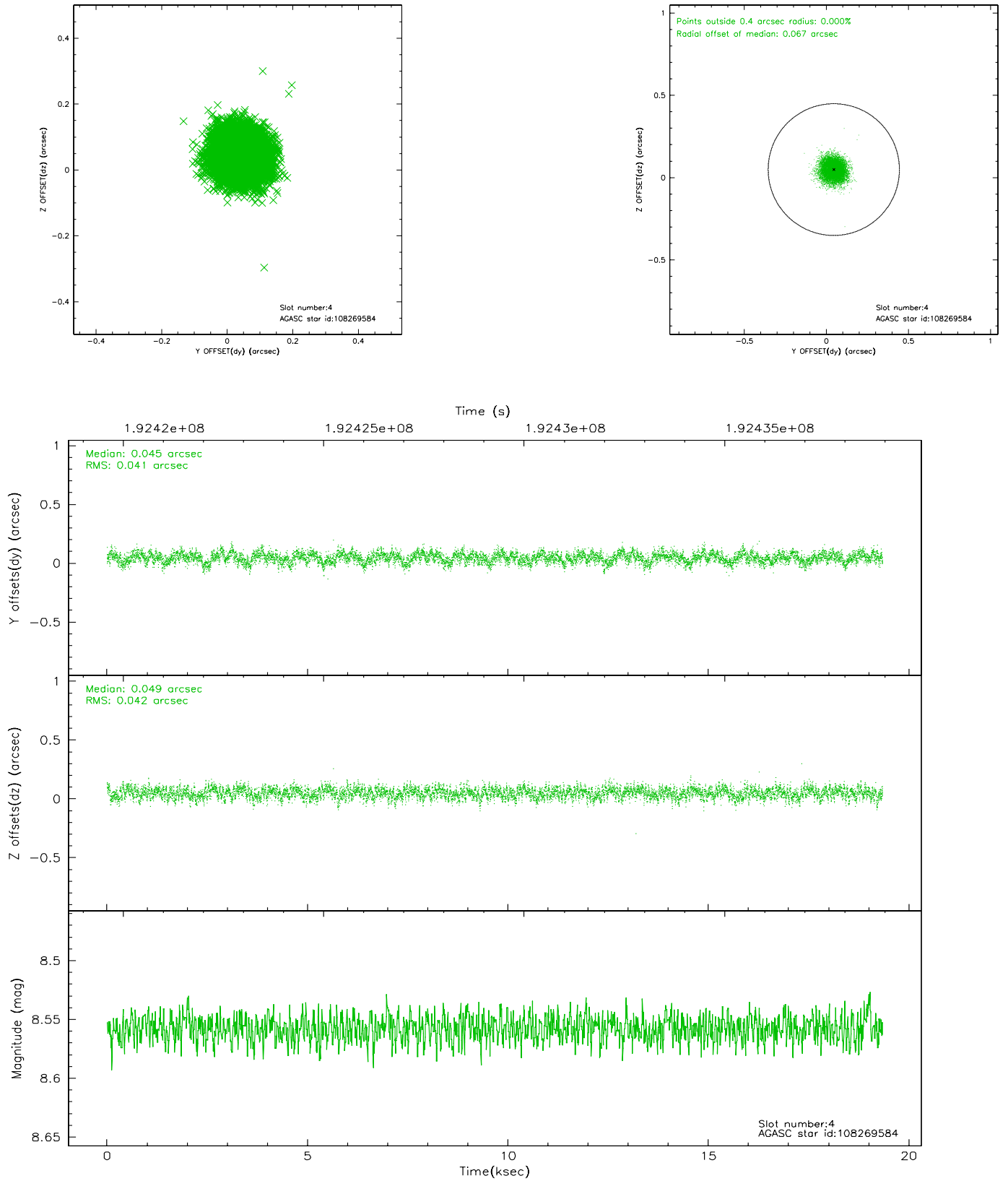


## 2.4 Star Slots

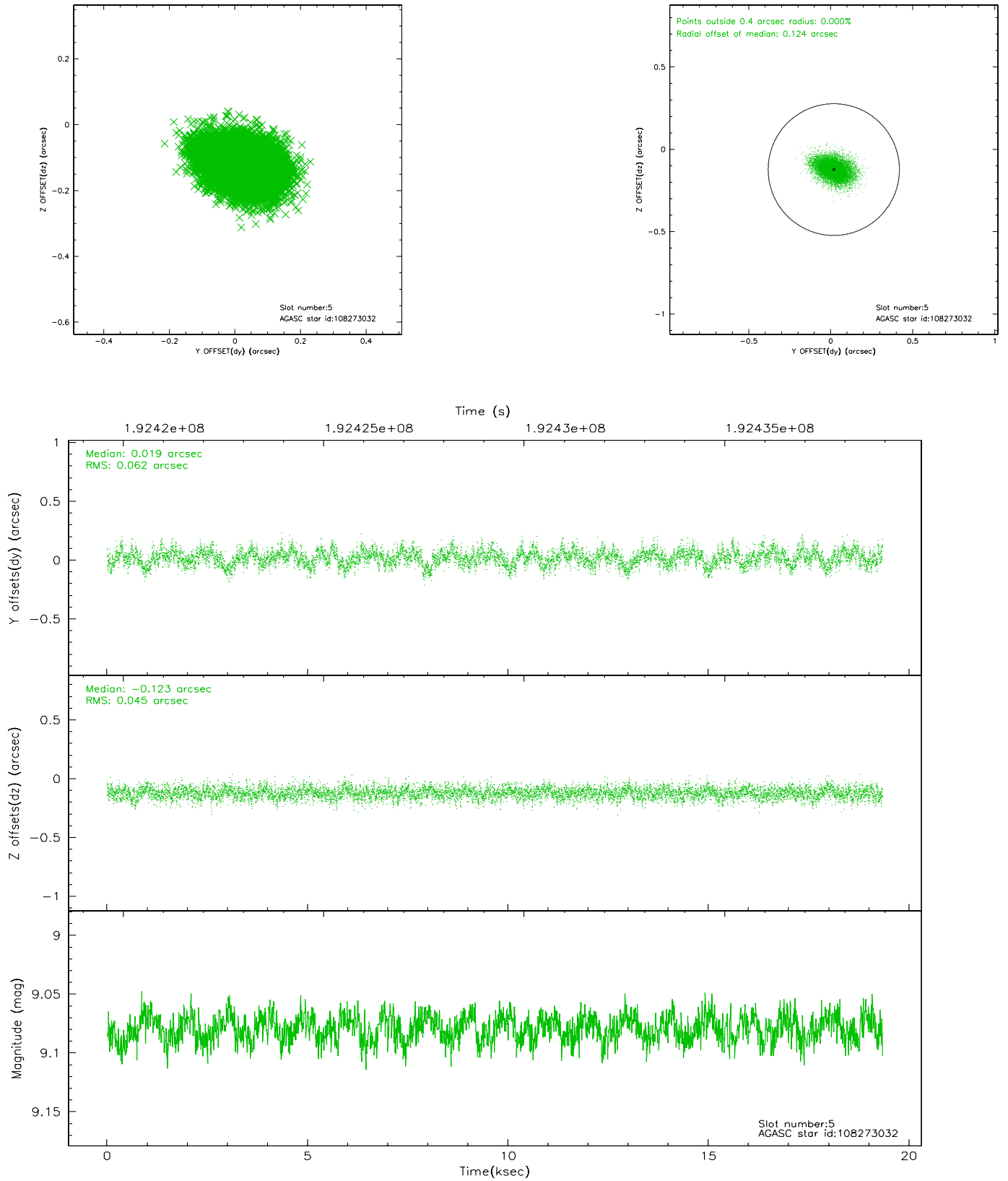
### 2.4.1 Slot 3



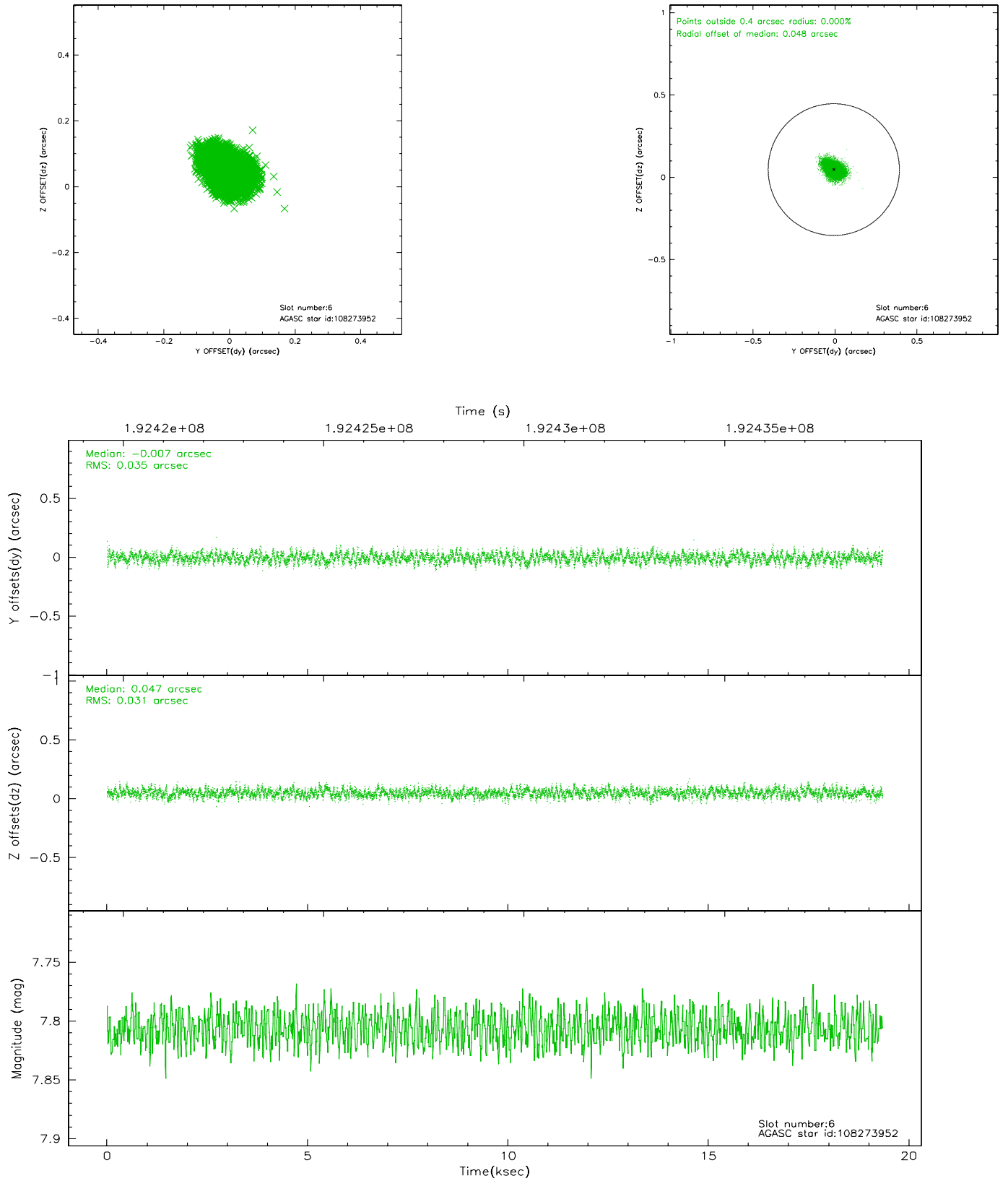
## 2.4.2 Slot 4



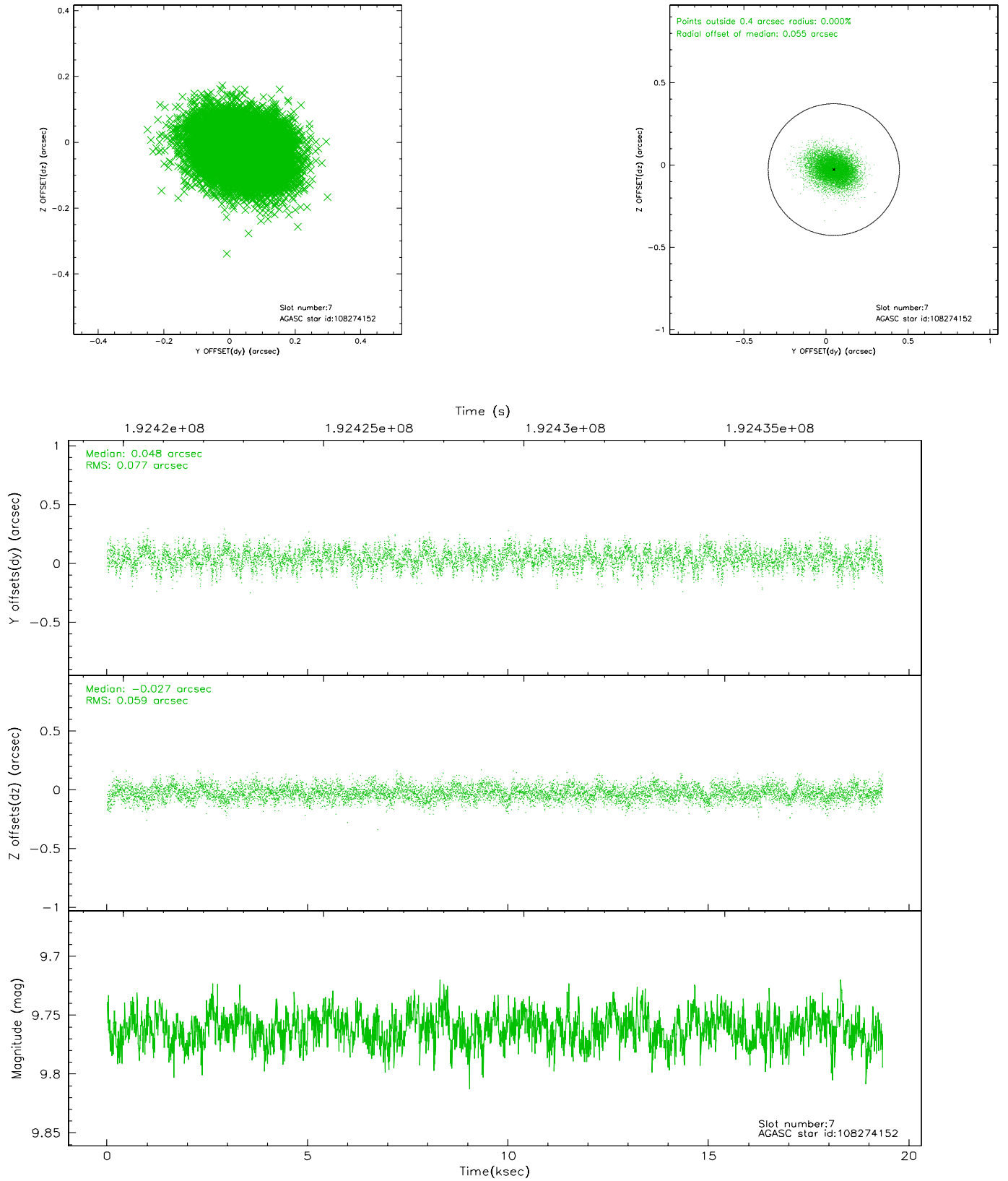
### 2.4.3 Slot 5



## 2.4.4 Slot 6

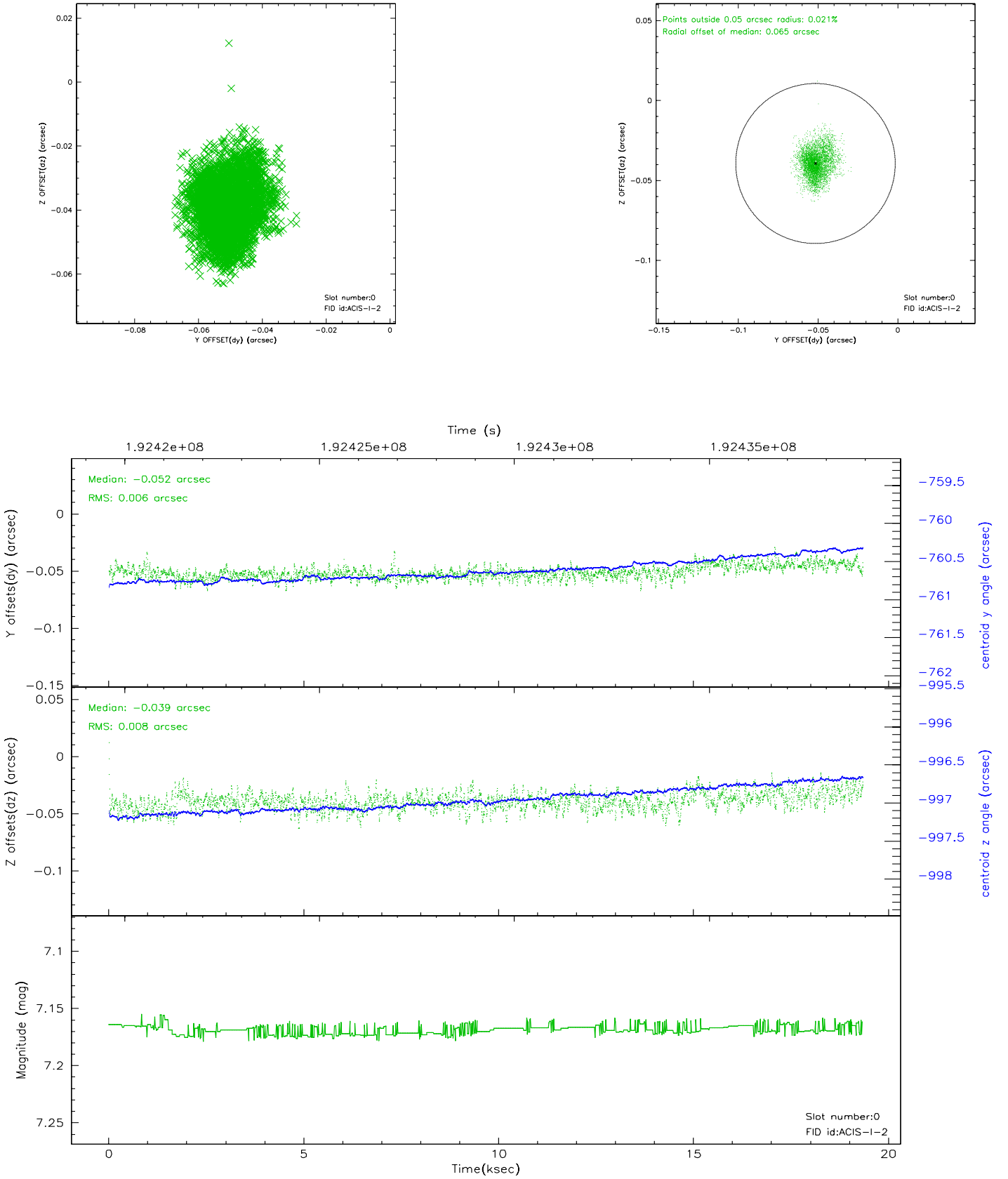


## 2.4.5 Slot 7

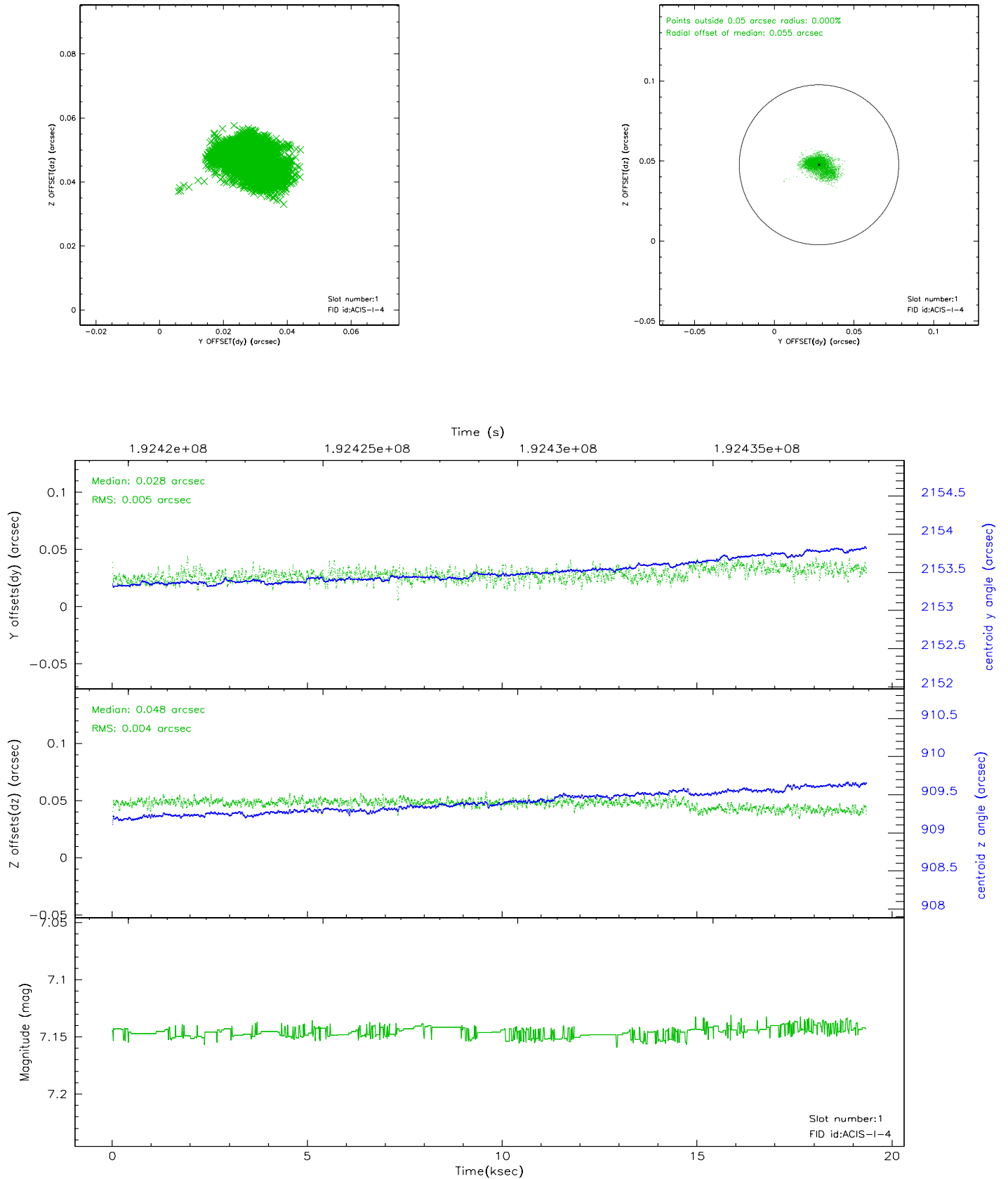


## 2.5 FID Slots

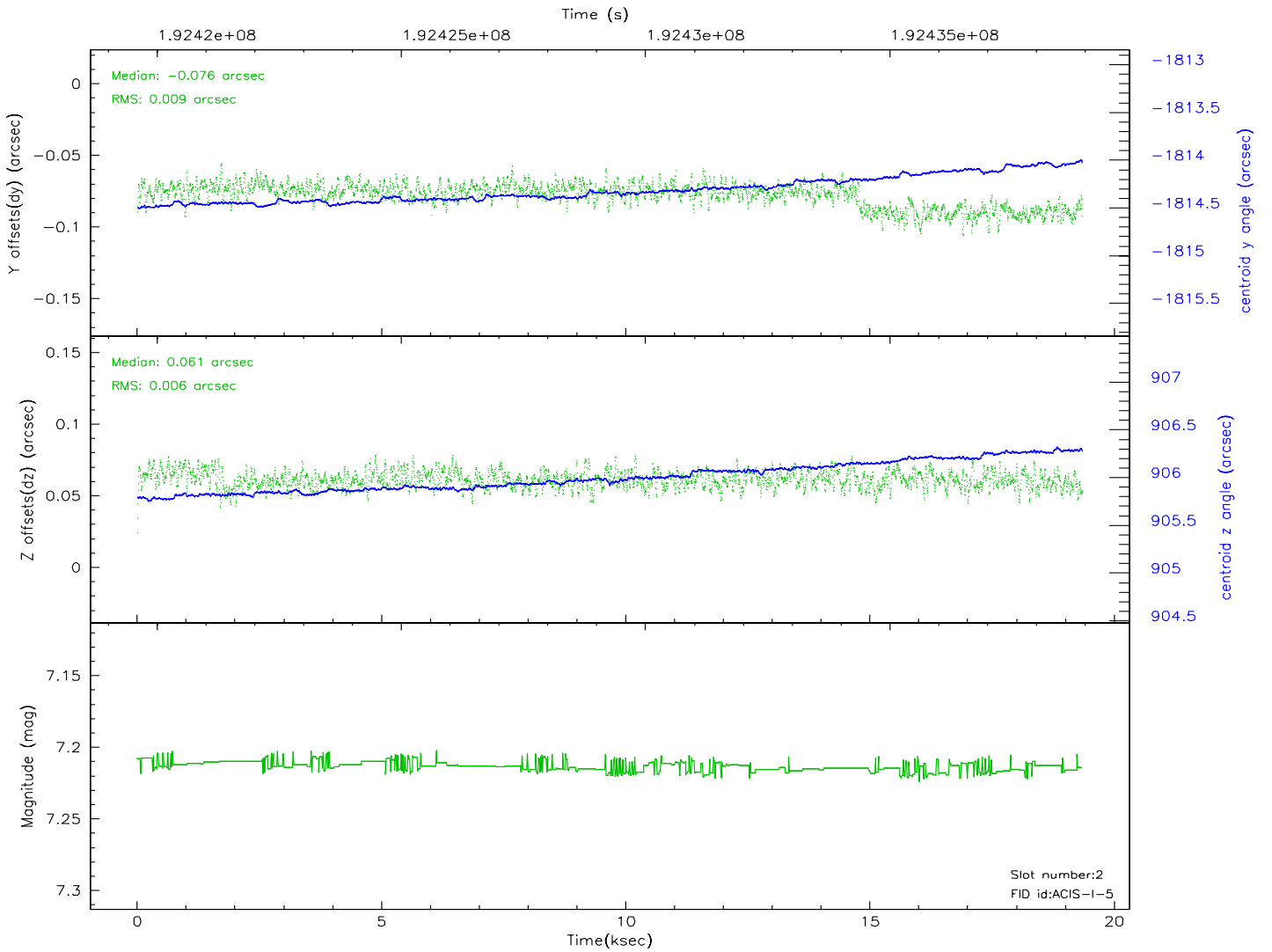
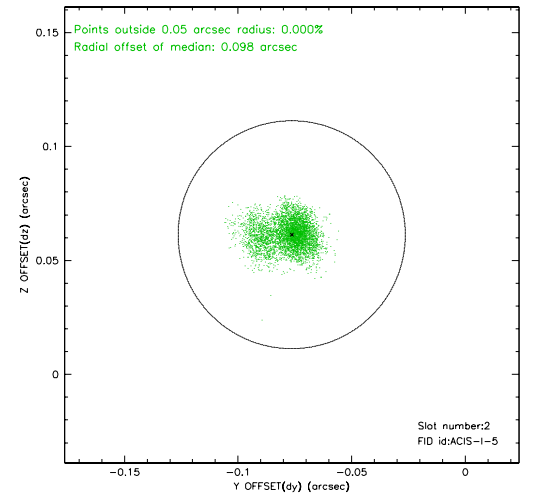
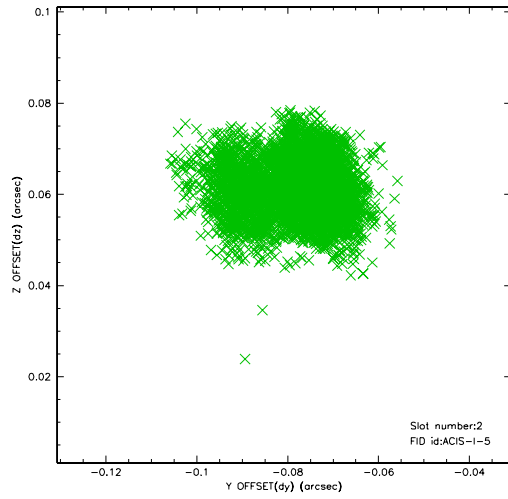
### 2.5.1 Slot 0



## 2.5.2 Slot 1

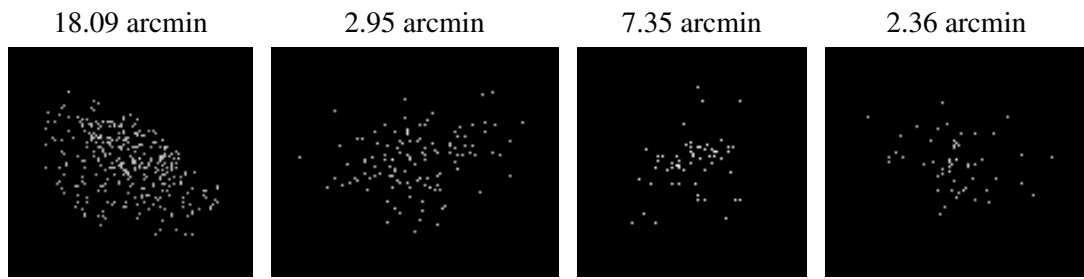


### 2.5.3 Slot 2





### 3 Point Sources



## A Summary

### A.1 Status

V&V Scientist	Beth Sundheim
V&V Date (YYYY-MM-DD)	2006.06.05
V&V Edition	1
V&V Disposition and Status	OK
V&V Charge Time	18.869

### A.2 Comments