

V&V Reference Report

L2 ASCDS Version : 8.5

Observation 5244 - L2 Version 3
Chandra X-Ray Center

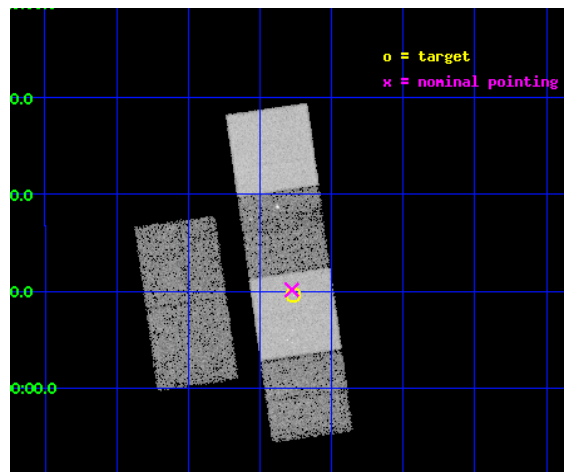
L2 Processing Date : Dec 9 2012

Contents

1	Front	2
2	OBI	3
2.1	OBI	3
2.1.1	Images	3
2.1.2	Bias	3
2.1.3	Parameters	4
2.1.4	Events	4
2.2	Compared Parameters	5
2.3	Aspect	6
2.4	Star Slots	9
2.4.1	Slot 3	9
2.4.2	Slot 4	10
2.4.3	Slot 5	11
2.4.4	Slot 6	12
2.4.5	Slot 7	13
2.5	FID Slots	14
2.5.1	Slot 0	14
2.5.2	Slot 1	15
2.5.3	Slot 2	16
A	Summary	17
A.1	Status	17
A.2	Comments	17

1 Front

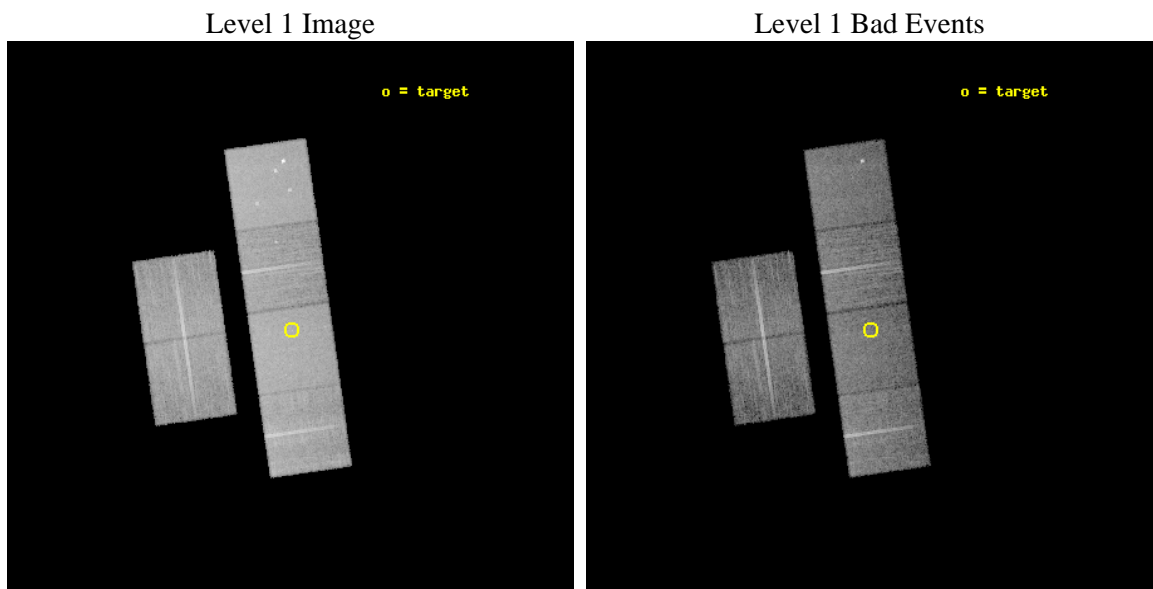
seq_num	701009	Sequence number
obs_id	5244	Observation id
title	Characterization of quiescent X-ray emission from peculiar X-ray flash sources	Proposal title
observer	Prof Mariano Mendez	Principal investigator
object	PKS J0234-0049	Source name
dtcycle	0	
cycle	P	events from which exps? Prim/Second/Both
ra_targ	38.69125	Observer's specified target RA [deg]
dec_targ	-0.840028	Observer's specified target Dec [deg]
ra_nom	38.694275160634	Nominal RA [deg]
dec_nom	-0.83083411330749	Nominal Dec [deg]
roll_nom	81.878020802681	Nominal Roll [deg]
revision	3	Processing version of data
ontime	13458.110183746	Sum of GTIs [s]
livetime	13287.695489098	Livetime [s]
ontime2	13458.151223749	Sum of GTIs [s]
ontime3	13457.987063736	Sum of GTIs [s]
ontime5	13458.069143742	Sum of GTIs [s]
ontime6	13458.028103739	Sum of GTIs [s]
ontime7	13458.110183746	Sum of GTIs [s]
ontime8	13457.946023762	Sum of GTIs [s]
l2events	163242	Number of level 2 events



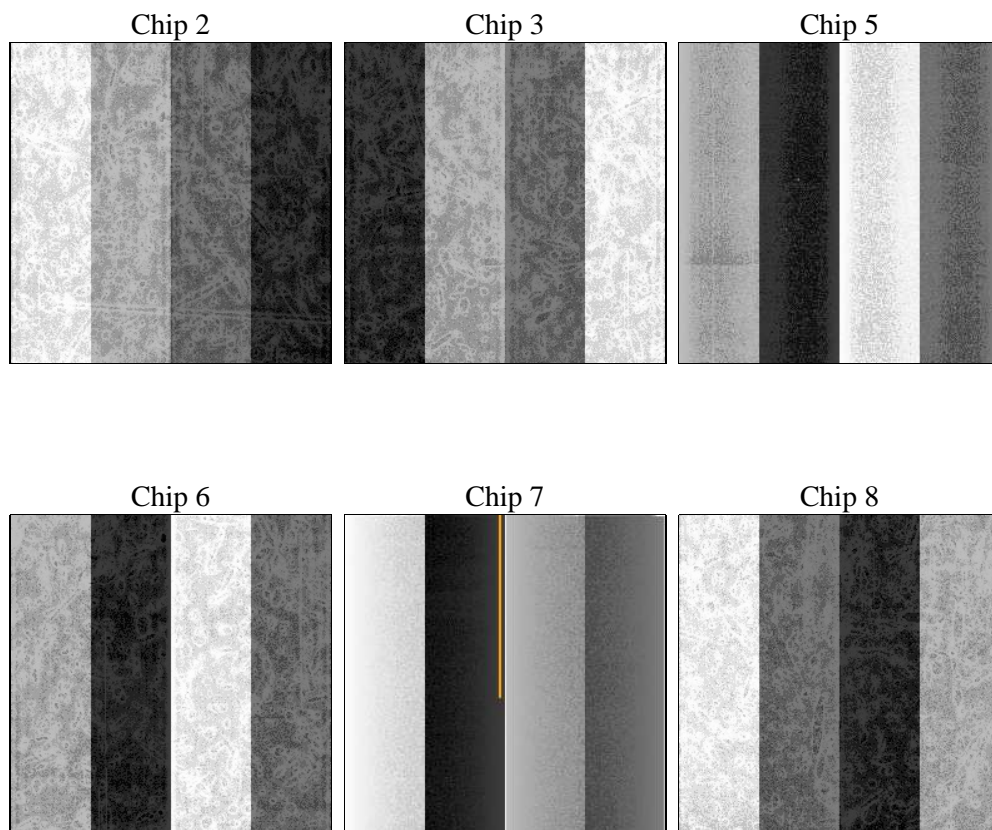
2 OBI

2.1 OBI

2.1.1 Images



2.1.2 Bias



2.1.3 Parameters

obi_num	0	Obi number	sched_exp_time	13500.000000	[s] Scheduled observation exposure time
ascdsver	8.5	Processing system revision	ontime	13458.110183746	Sum of GTIs [s]
caldsver	4.5.4	 	ontime2	13458.151223749	Sum of GTIs [s]
date	2012-12-09T17:24:11	Date and time of file creation	ontime3	13457.987063736	Sum of GTIs [s]
revision	3	Processing version of data	ontime5	13458.069143742	Sum of GTIs [s]
			ontime6	13458.028103739	Sum of GTIs [s]
			ontime7	13458.110183746	Sum of GTIs [s]
			ontime8	13457.946023762	Sum of GTIs [s]
			l1events	725035	Number of level 1 events

2.1.4 Events

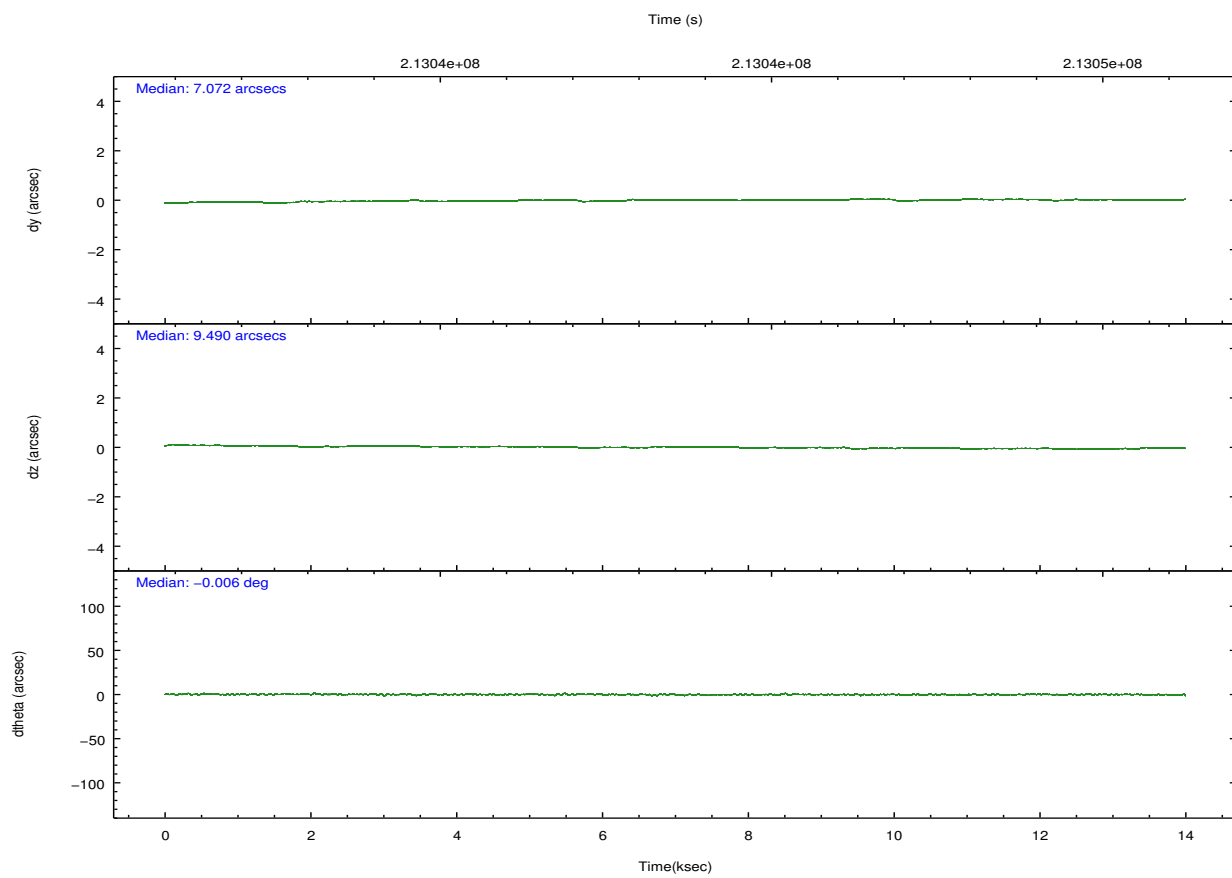
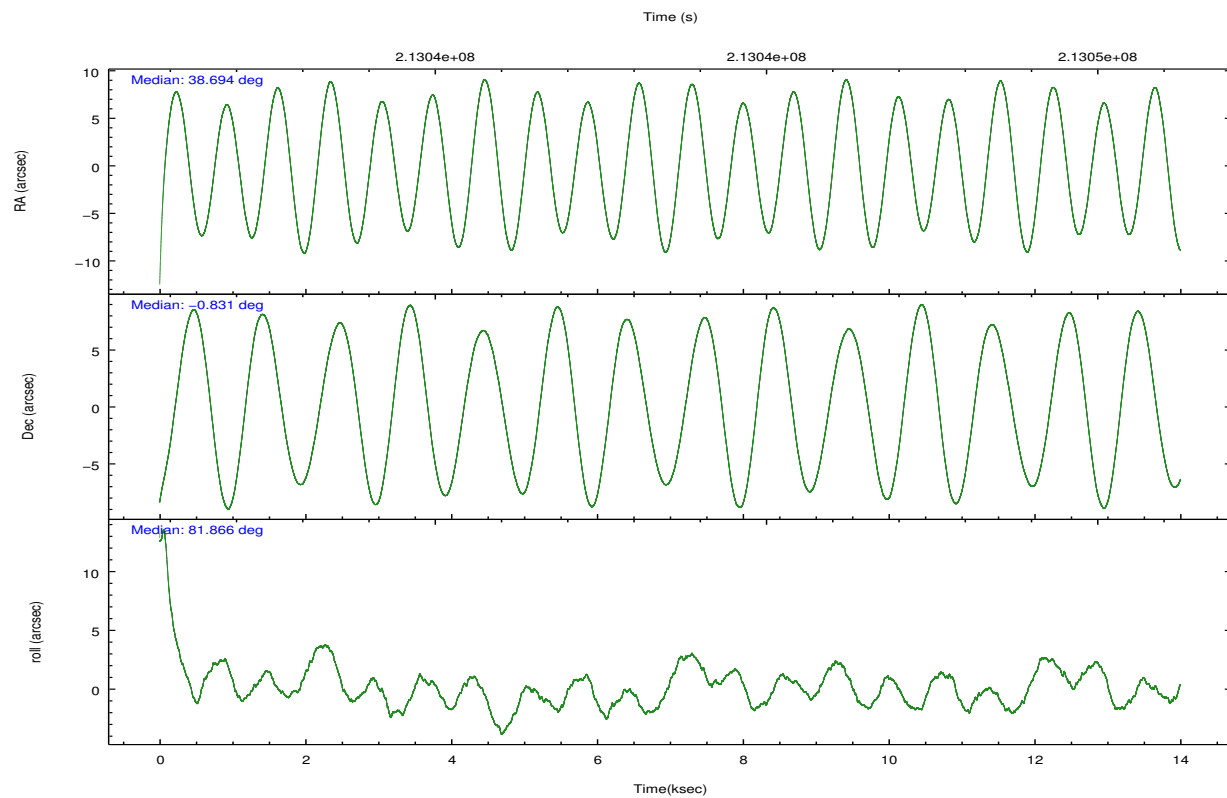
	ccd 2	ccd 3	ccd 5	ccd 6	ccd 7	ccd 8		ccd 2	ccd 3	ccd 5	ccd 6	ccd 7	ccd 8
level 1 events	103647	97851	153151	104468	139090	126828	grade 0 events	5114	4964	6161	4938	5124	8475
rejected events	91688	86489	83511	92184	81890	99283		4%	5%	4%	4%	3%	6%
rejected %	88%	88%	54%	88%	58%	78%	grade 1 events	70	56	166	49	168	97
								0%	0%	0%	0%	0%	0%
							grade 2 events	2504	2176	21638	2511	11366	6110
								2%	2%	14%	2%	8%	4%
							grade 3 events	1146	1176	2726	1229	5068	2789
								1%	1%	1%	1%	3%	2%
							grade 4 events	1144	1116	2304	1180	4975	2714
								1%	1%	1%	1%	3%	2%
							grade 5 events	4063	4456	11535	4614	13177	6062
								3%	4%	7%	4%	9%	4%
							grade 6 events	2051	1932	36846	2434	30703	7470
								1%	1%	24%	2%	22%	5%
							grade 7 events	87555	81975	71775	87513	68509	93111
								84%	83%	46%	83%	49%	73%

2.2 Compared Parameters

Parameter	Planned	Actual
Instrument	ACIS	ACIS
Detector	ACIS-235678	ACIS-235678
Grating	NONE	NONE
Data mode	FAINT	FAINT
Observation mode	POINTING	POINTING
[deg] Pointing RA	38.704765	38.69427516063413
[deg] Pointing Dec	-0.855975	-0.8308341133074924
[deg] Pointing Roll	81.721543	81.87802080268122
[mm] SIM focus pos	-0.684267	-0.6828225247311905
[mm] SIM defocus	0	0.001444936568705701
[mm] SIM translation stage pos	-190.132523	-190.1400660498719
[mm] SIM translation stage offset	0	0.00754346686406393
[s] Observation start time (MET)	213037040.184000	213035765.78295
Observation start date	2004-10-01T16:56:16	2004-10-01T16:36:05
[s] Observation end time (MET)	213050540.184000	213051279.67115
Observation end date	2004-10-01T20:41:16	2004-10-01T20:54:39
Read mode	TIMED	TIMED

Parameter	Planned	Actual
Obspar format version number	7	7
Obspar file type	PREDICTED	ACTUAL
Obspar update status	NONE	UPDATED
Number of optional ACIS chips dropped	0	0
On-chip summing requested	N	N
Subarray requested	NONE	NONE
Alternating exposures requested	N	N
[s] Primary exposure time	0.000000	3.2

2.3 Aspect

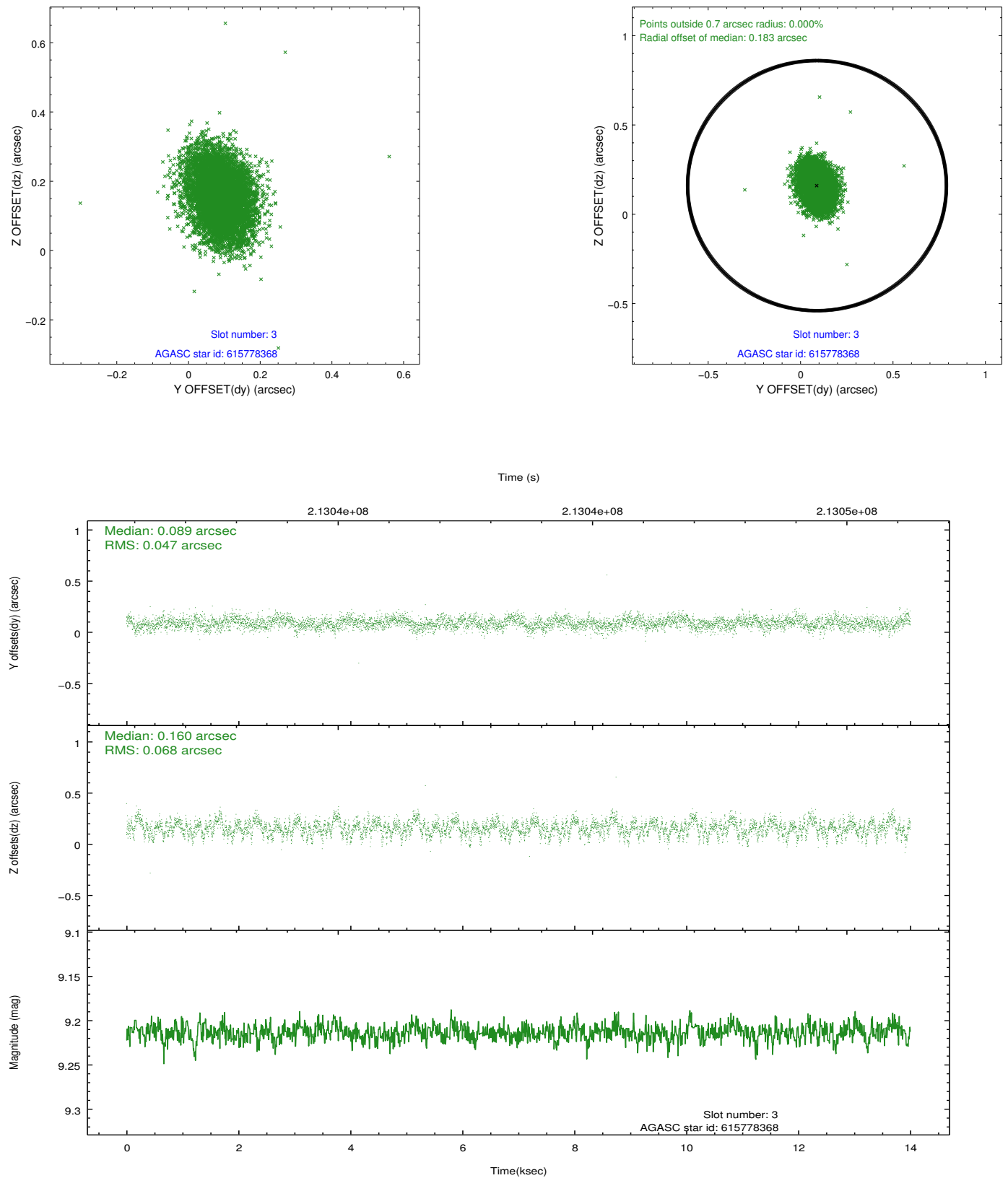


Slot Statistics

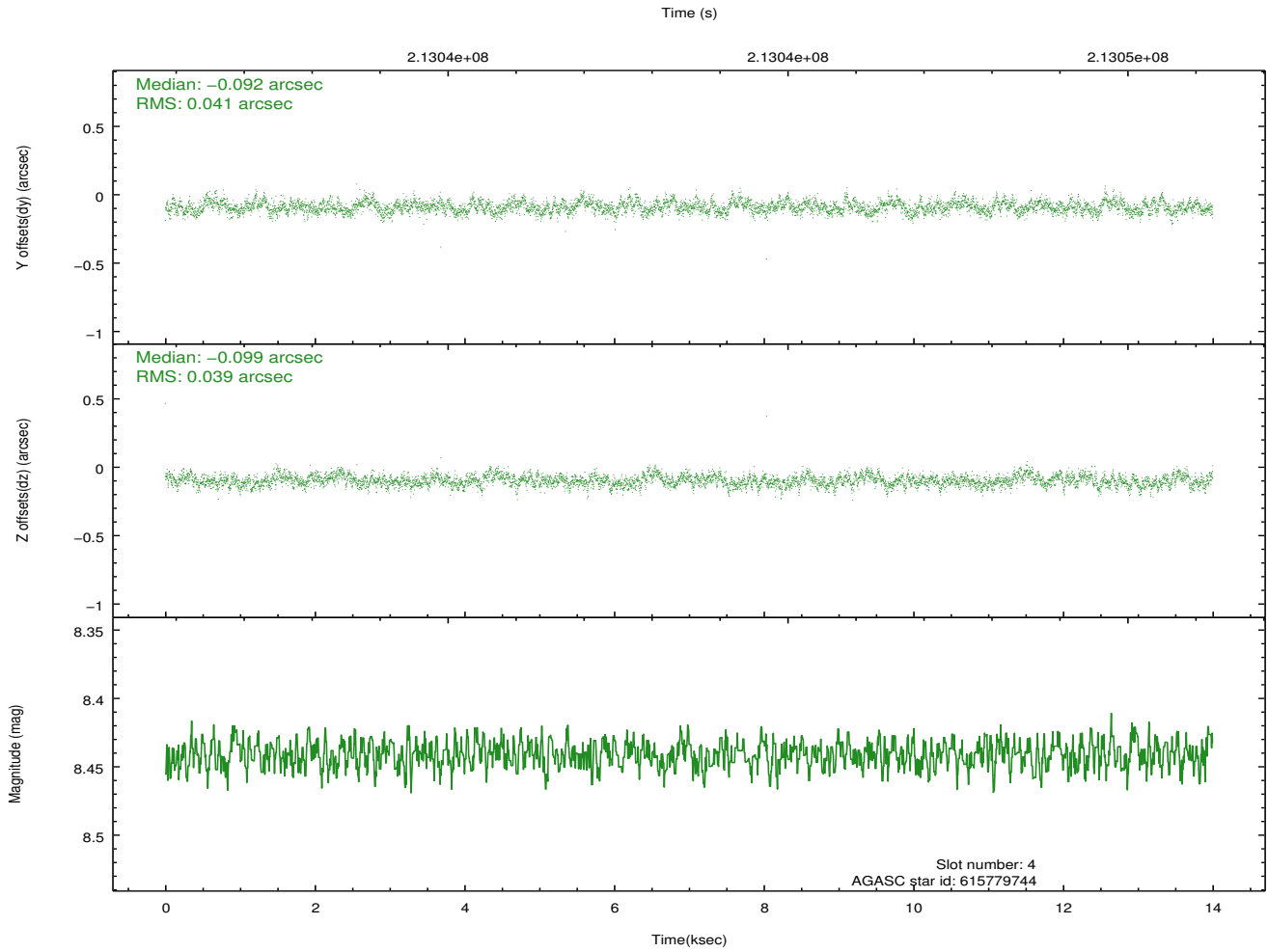
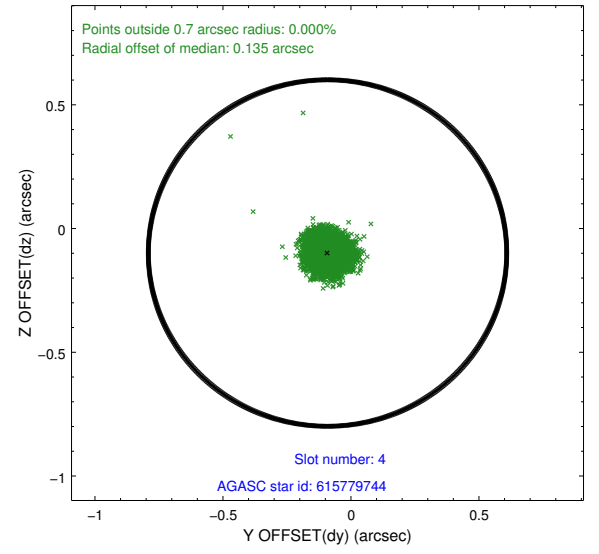
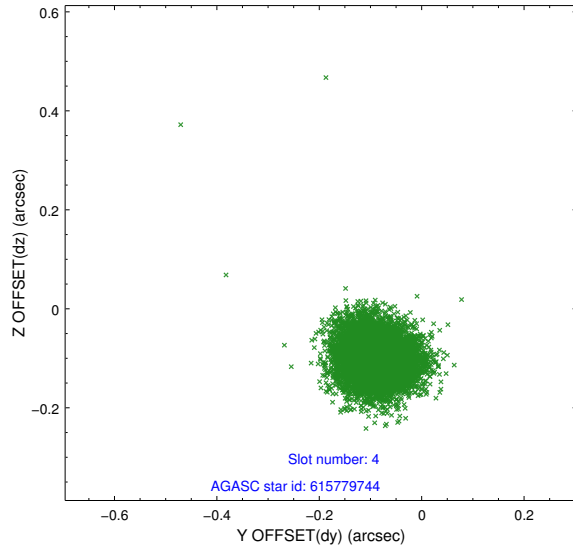
slot	status	id	mag	n_pts	med_dy	med_dz	dr1	dr2	ra	dec	mean_y	mean_z
0	FID	ACIS-S-1	7.18	3415	0.029	-0.017	0.007	0.012	0.000000	0.000000	936.26	-1726.37
1	FID	ACIS-S-5	7.24	3416	-0.064	0.024	0.007	0.011	0.000000	0.000000	-1812.65	170.88
2	FID	ACIS-S-6	7.35	3415	0.014	0.005	0.007	0.011	0.000000	0.000000	401.43	815.20
3	GUIDE	615778368	9.21	6825	0.089	0.160	0.087	0.146	38.735505	-1.189108	-1170.43	-282.32
4	GUIDE	615779744	8.44	6829	-0.092	-0.099	0.060	0.096	38.723845	-0.370198	1740.47	183.97
5	GUIDE	615780704	8.85	6824	-0.049	0.208	0.075	0.125	38.952780	-0.349754	1932.54	-620.65
6	GUIDE	615777544	9.55	6828	0.131	-0.196	0.104	0.170	38.026395	-0.885081	-455.43	2400.90
7	GUIDE	615779224	8.60	6827	-0.079	-0.073	0.111	0.167	38.120893	-0.742469	101.09	2138.96

2.4 Star Slots

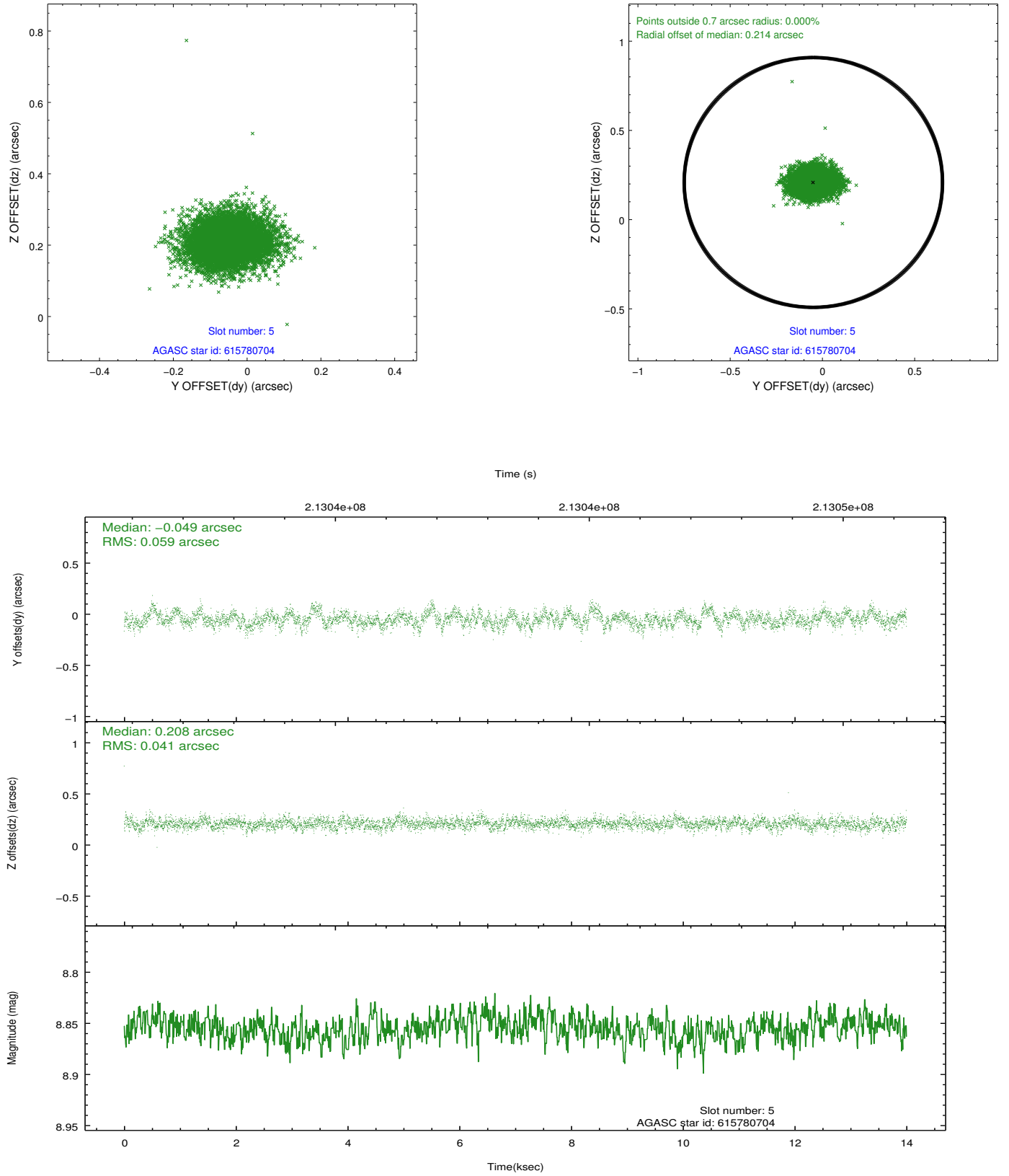
2.4.1 Slot 3



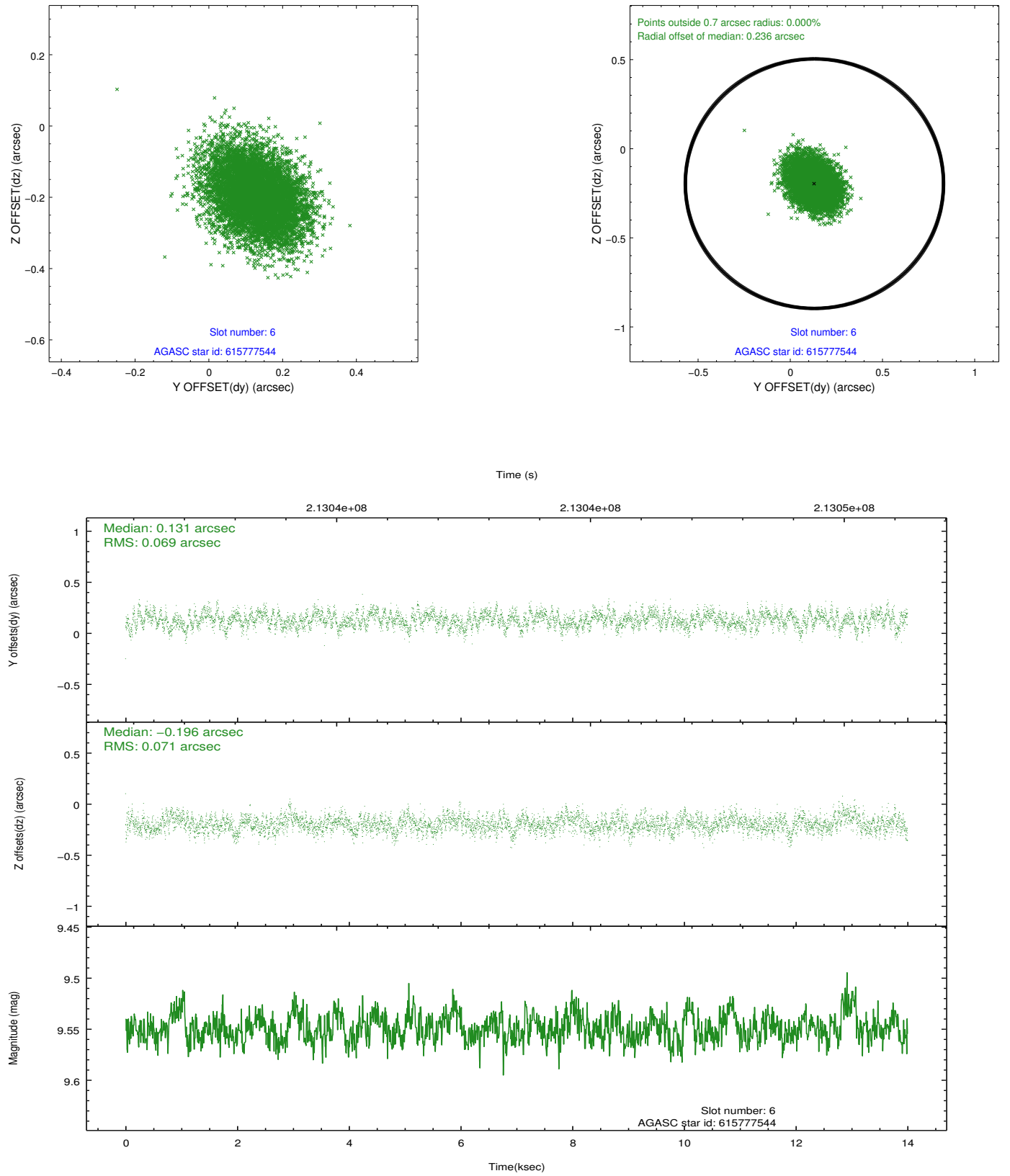
2.4.2 Slot 4



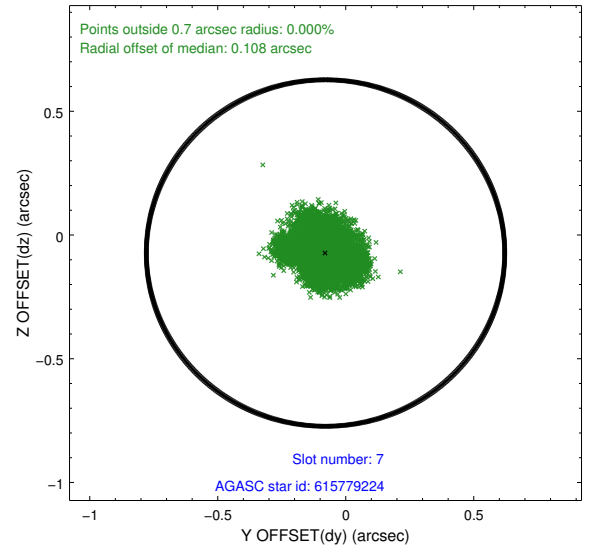
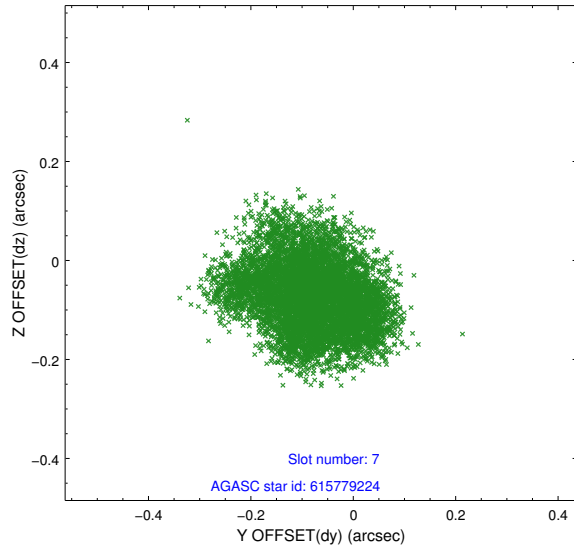
2.4.3 Slot 5



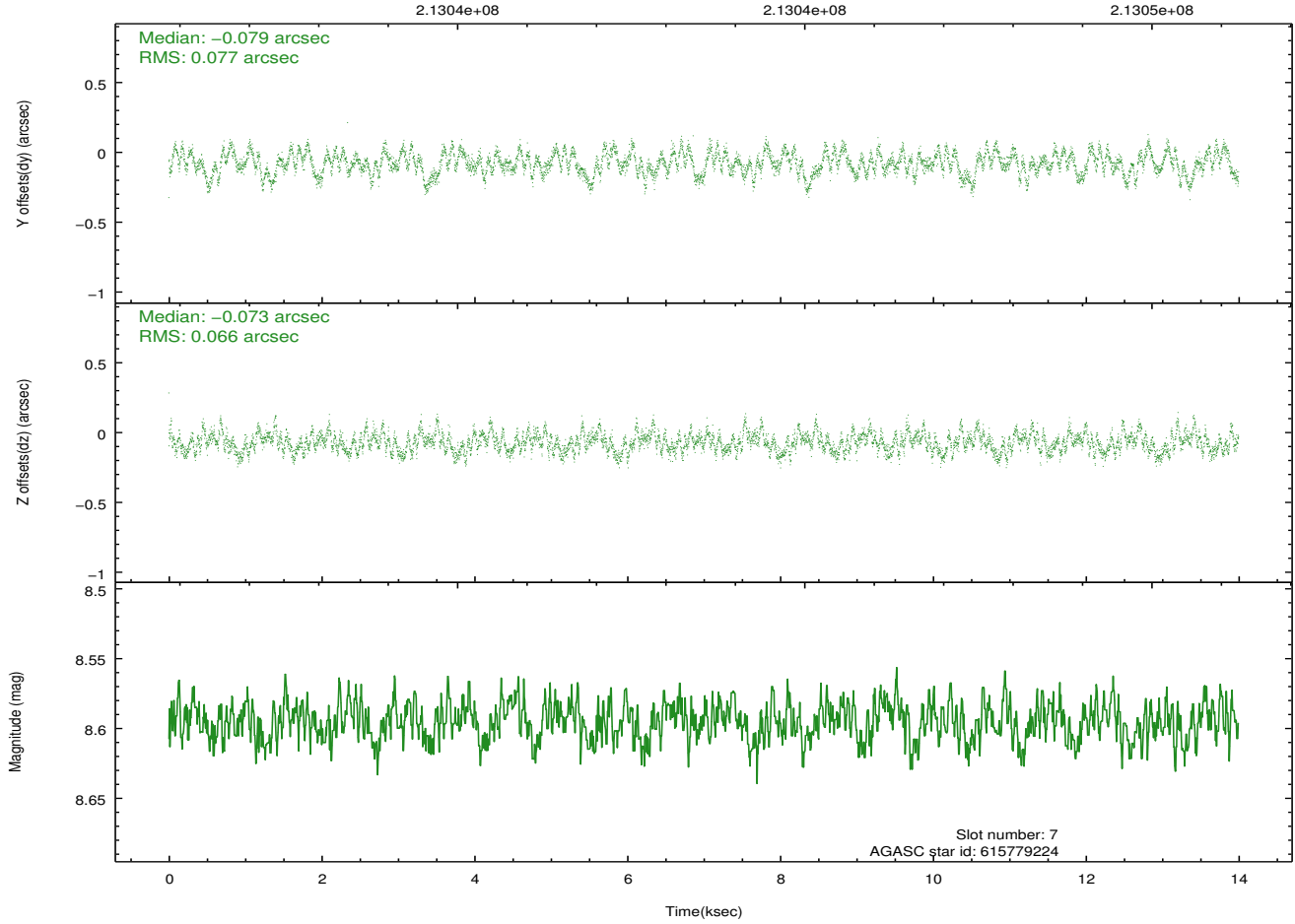
2.4.4 Slot 6



2.4.5 Slot 7

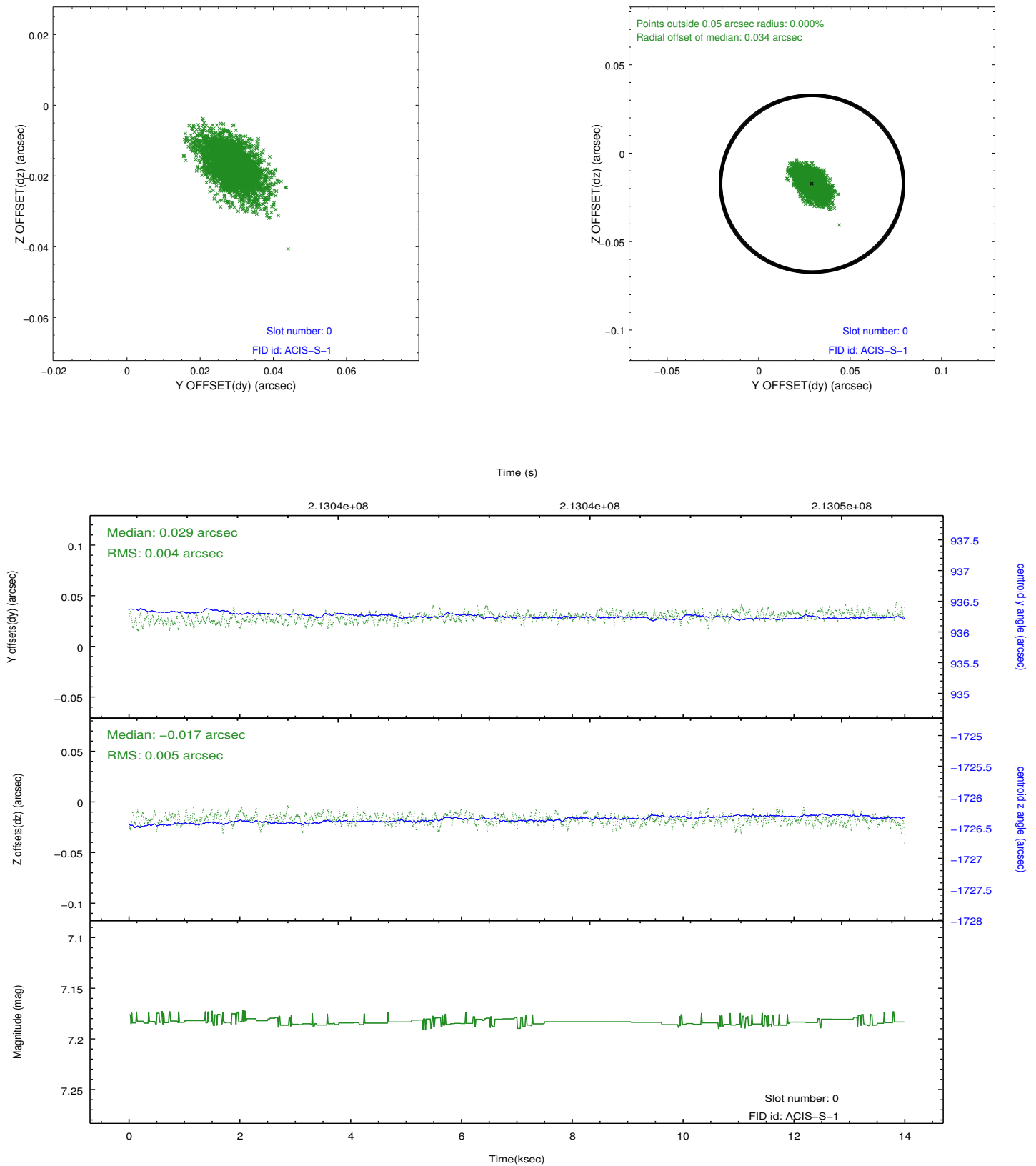


Time (s)

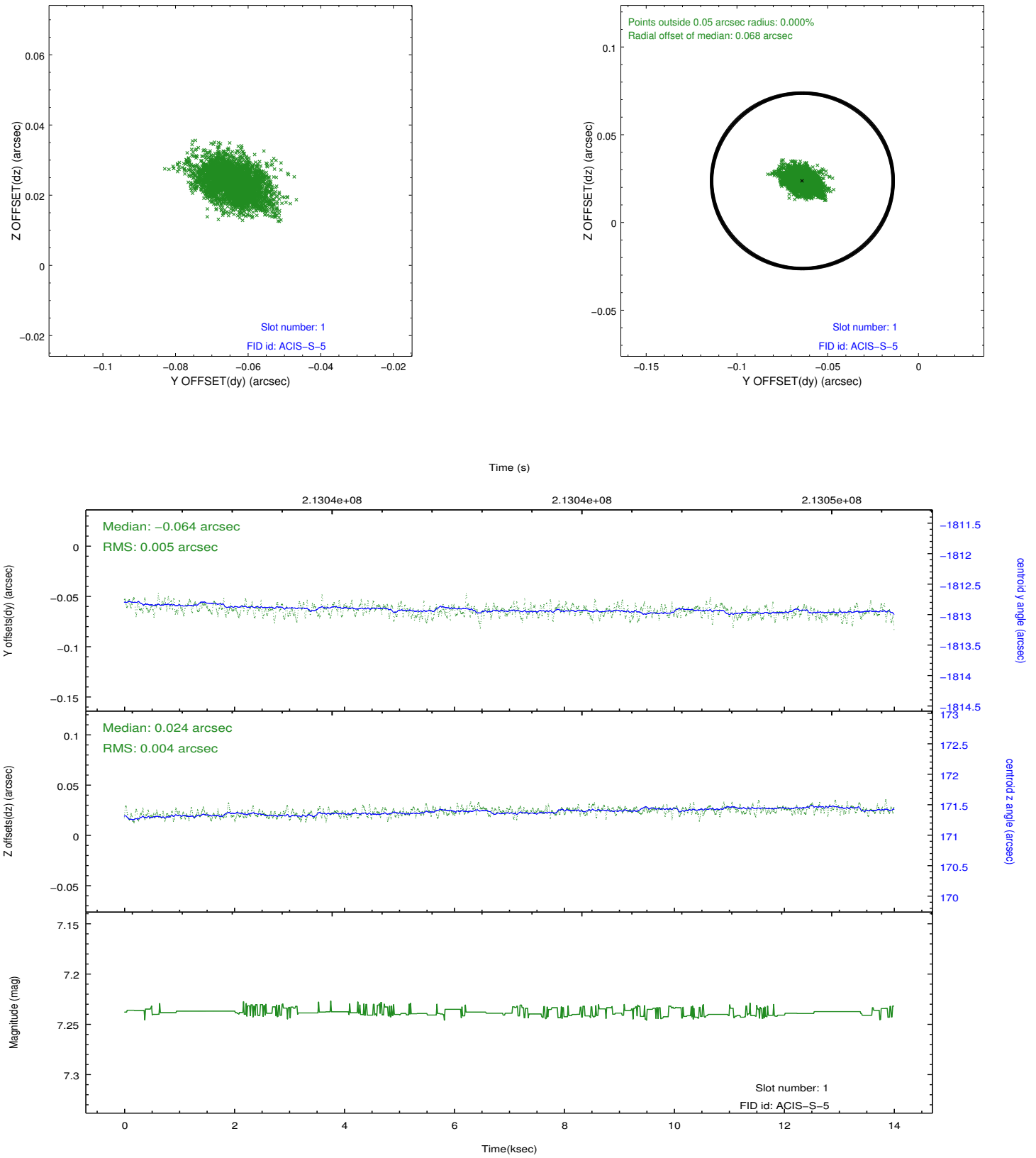


2.5 FID Slots

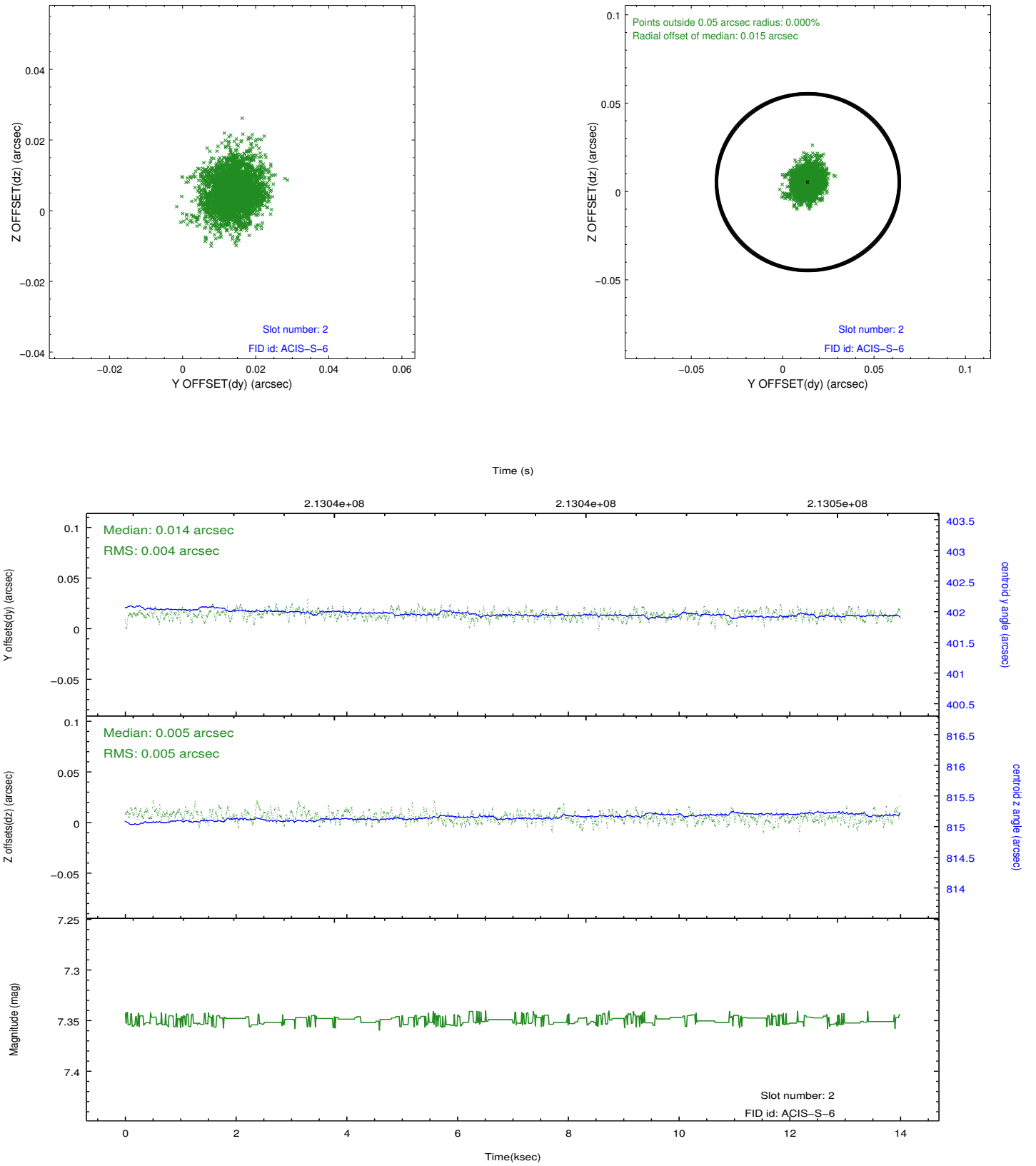
2.5.1 Slot 0



2.5.2 Slot 1



2.5.3 Slot 2



A Summary

A.1 Status

V&V Scientist	Beth Sundheim
V&V Date (YYYY-MM-DD)	2013.01.03
V&V Edition	1
V&V Disposition and Status	OK
V&V Charge Time	13.459

A.2 Comments