

V&V Reference Report

L2 ASCDS Version : 7.6.7

Observation 4911 - L2 Version 002
Chandra X-Ray Center

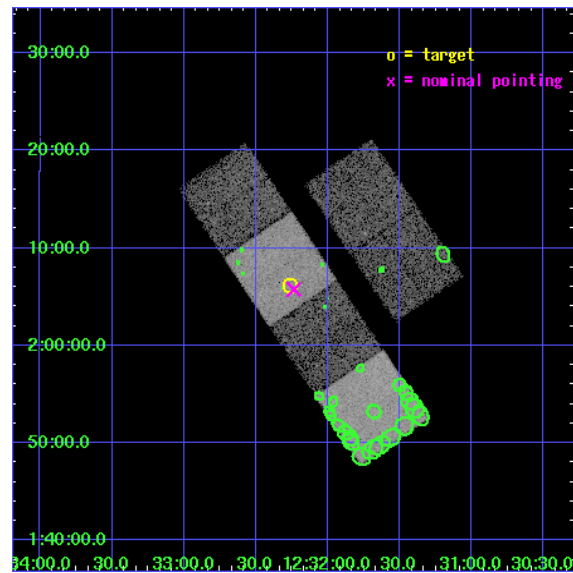
L2 Processing Date: Mar 2 2006

Contents

1	Front	2
2	OBI	3
2.1	OBI	3
2.1.1	Images	3
2.1.2	Bias	3
2.1.3	Parameters	4
2.1.4	Events	4
2.2	Compared Parameters	5
2.3	Aspect	6
2.4	Star Slots	9
2.4.1	Slot 3	9
2.4.2	Slot 4	10
2.4.3	Slot 5	11
2.4.4	Slot 6	12
2.4.5	Slot 7	13
2.5	FID Slots	14
2.5.1	Slot 0	14
2.5.2	Slot 1	15
2.5.3	Slot 2	16
3	Point Sources	17
A	Summary	18
A.1	Status	18
A.2	Comments	18

1 Front

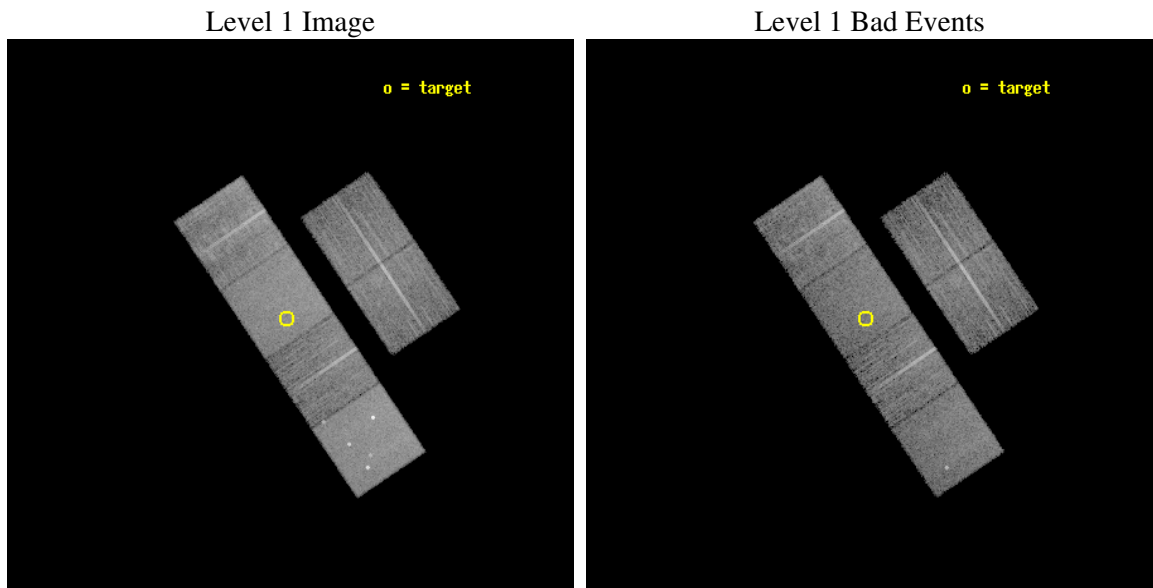
seq_num	700992
obs_id	4911
title	Chandra Observations of Optically Selected Type 2 Quasar Candidates
observer	Prof. Michael Strauss
object	SDSSJ123215.81+020610.0
dtcycle	0
cycle	P
ra_targ	188.065833
dec_targ	2.102778
ra_nom	188.05911937086
dec_nom	2.0958731797109
roll_nom	236.07109086932
revision	2
ontime	9734.3999637365
livetime	9611.1371300437
ontime2	9731.1590530574
ontime3	9734.3999637365
ontime5	9734.3999637365
ontime6	9734.3999637365
ontime7	9734.3999637365
ontime8	9734.3999637365
l2events	118162



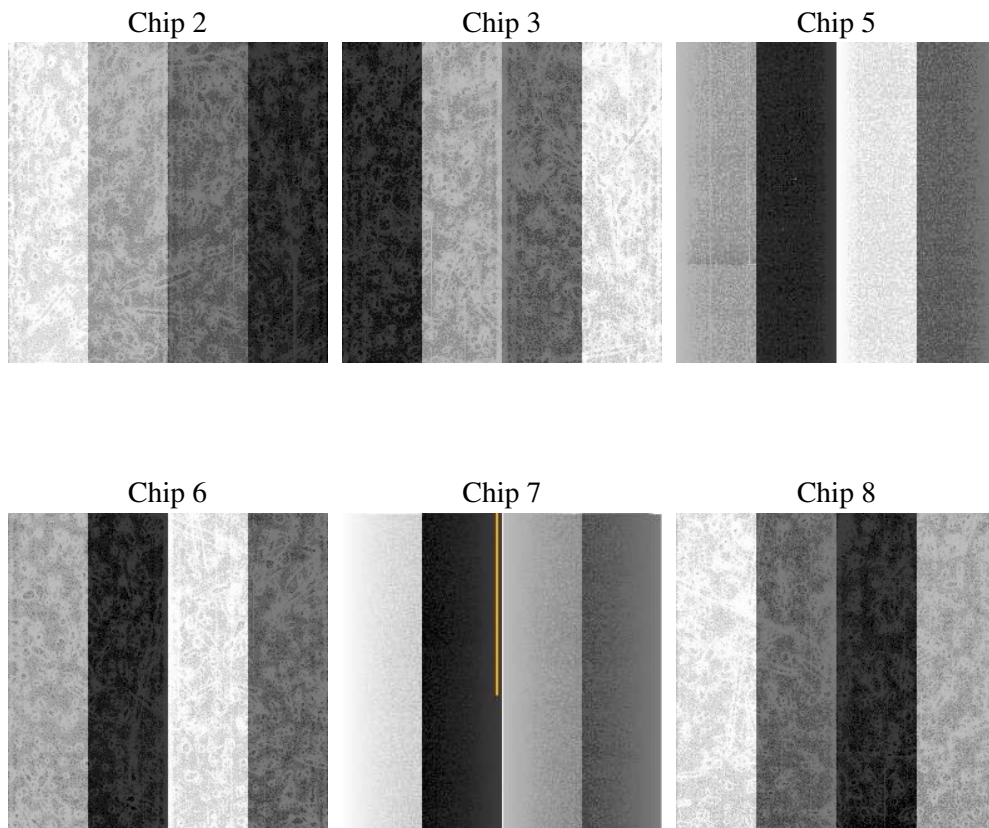
2 OBI

2.1 OBI

2.1.1 Images



2.1.2 Bias



2.1.3 Parameters

obi_num	4
ascdsver	7.6.7
caldsver	3.2.1
date	2006-03-02T05:30:22
revision	2

sched_exp_time	9554.927000
ontime	10802.288871378
ontime2	10799.047960699
ontime3	10802.288871378
ontime5	10802.288871378
ontime6	10802.288871378
ontime7	10802.288871378
ontime8	10802.288871378
l1events	596283

2.1.4 Events

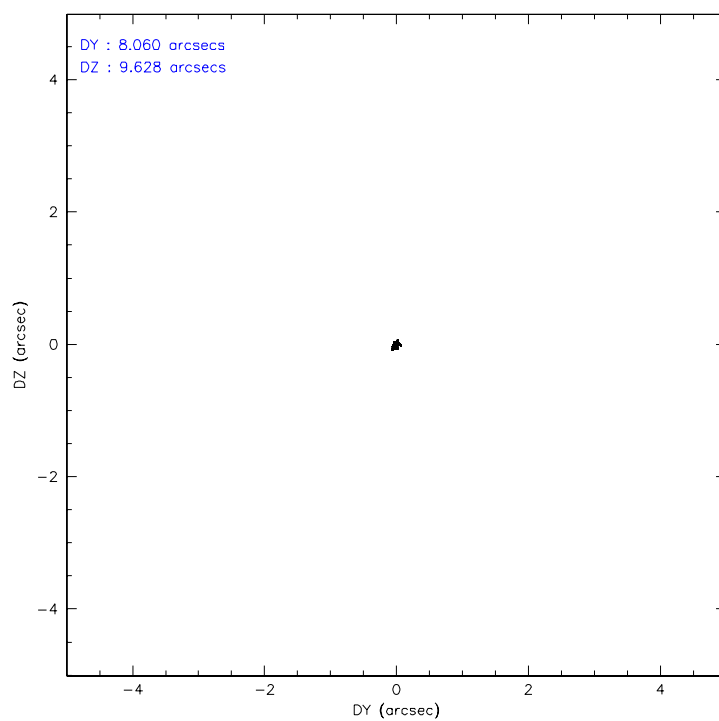
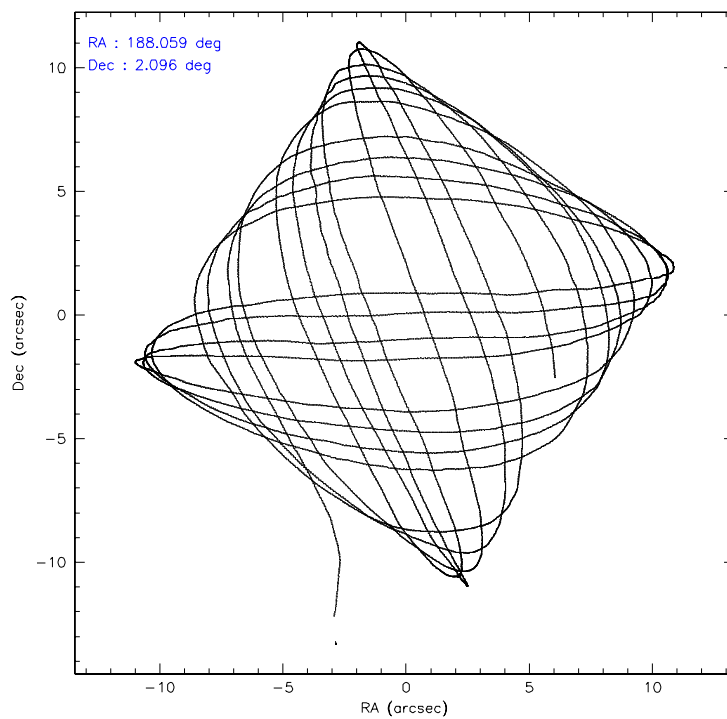
	ccd 2	ccd 3	ccd 5	ccd 6	ccd 7	ccd 8
level 1 events	83004	78931	129720	84679	113965	105984
rejected events	73882	70016	77154	75551	74514	85208
rejected %	89%	88%	59%	89%	65%	80%

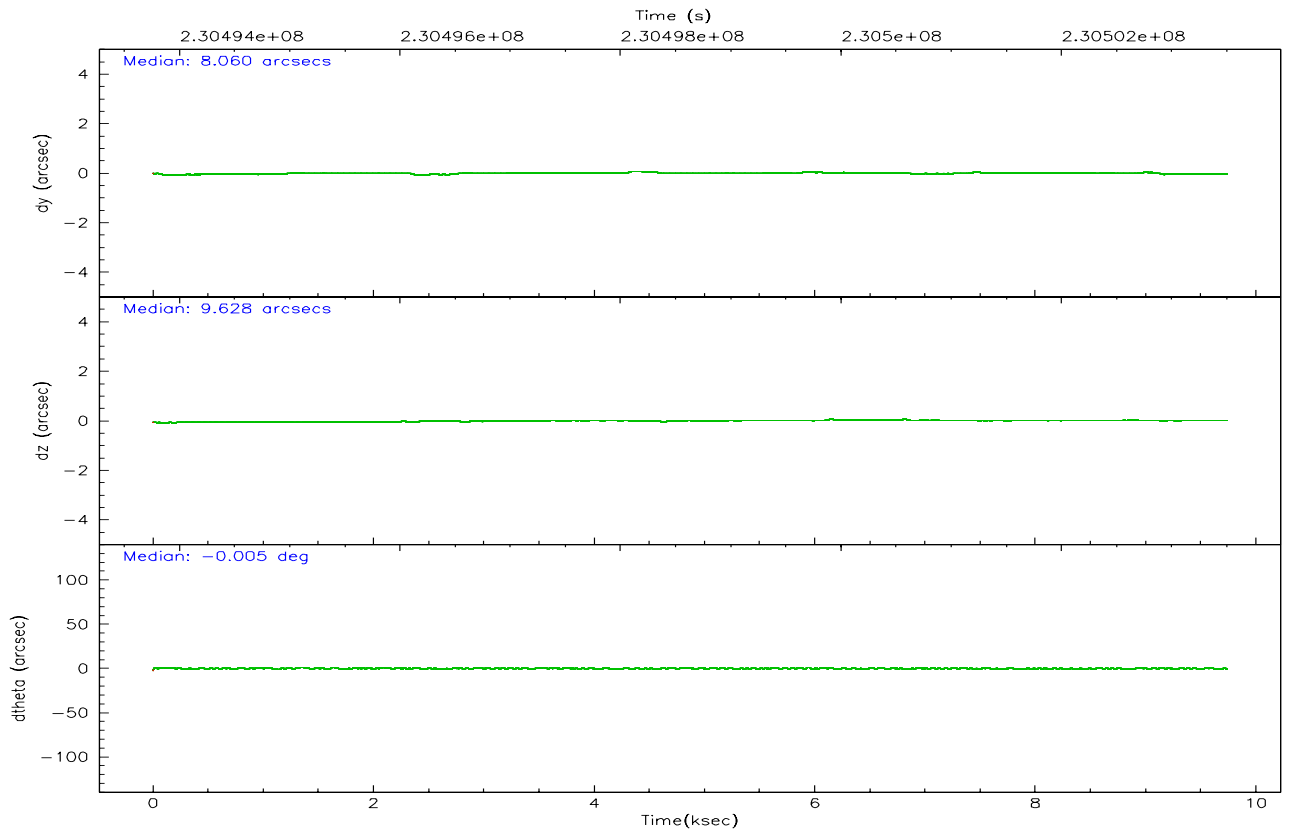
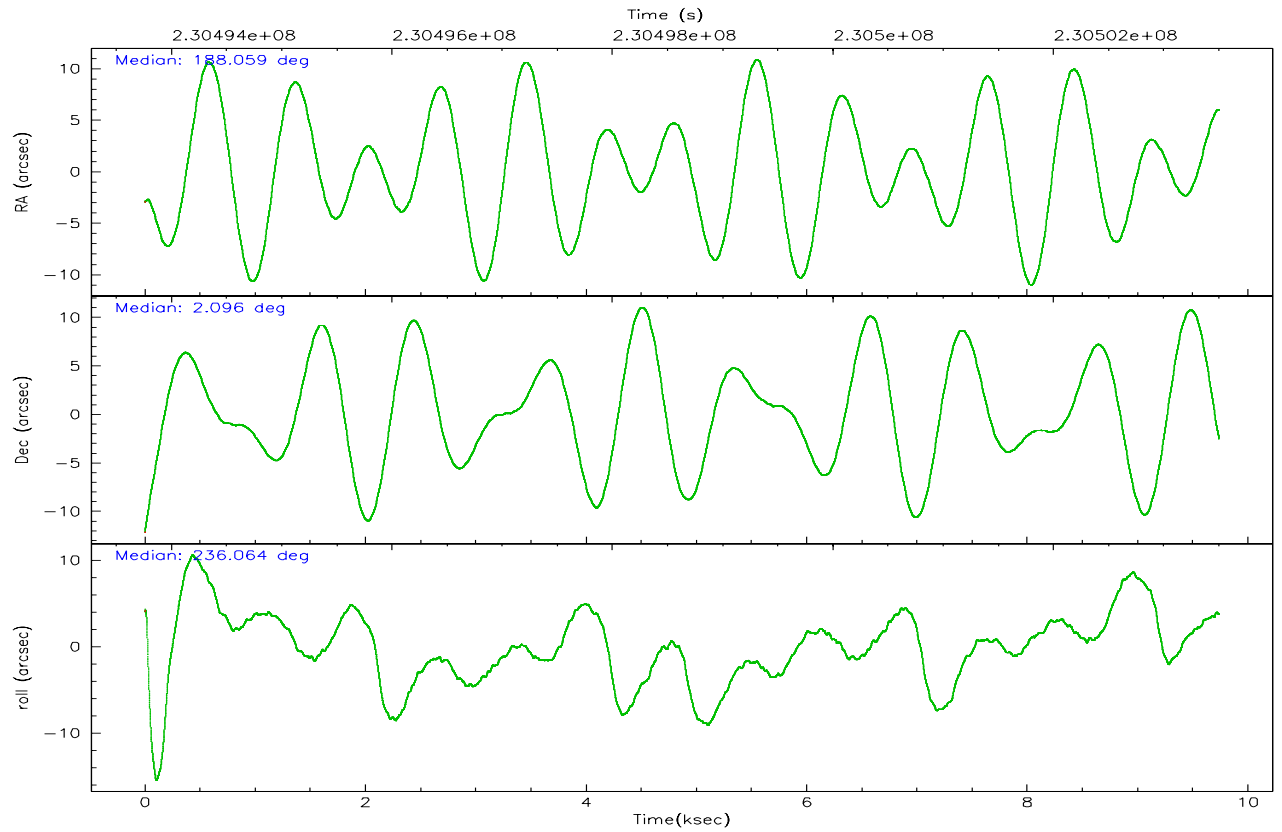
	ccd 2	ccd 3	ccd 5	ccd 6	ccd 7	ccd 8
grade 0 events	4442	4473	6720	4063	2607	7186
	5%	5%	5%	4%	2%	6%
grade 1 events	44	56	179	40	85	73
	0%	0%	0%	0%	0%	0%
grade 2 events	2000	1824	17807	2136	10955	5149
	2%	2%	13%	2%	9%	4%
grade 3 events	940	960	1352	964	2044	2375
	1%	1%	1%	1%	1%	2%
grade 4 events	983	980	1179	1000	2086	2221
	1%	1%	0%	1%	1%	2%
grade 5 events	3292	3707	6219	3880	7289	4935
	3%	4%	4%	4%	6%	4%
grade 6 events	1735	1670	31577	1981	26055	6320
	2%	2%	24%	2%	22%	5%
grade 7 events	69568	65261	64687	70615	62844	77725
	83%	82%	49%	83%	55%	73%

2.2 Compared Parameters

Parameter	Planned	Actual	Parameter	Planned	Actual
Instrument	ACIS	ACIS	Obspar format version number	6	6
Detector	ACIS-235678	ACIS-235678	Obspar file type	PREDICTED	ACTUAL
Grating	NONE	NONE	Obspar update status	NONE	UPDATED
Data mode	FAINT	FAINT	On-chip summing requested	N	N
Observation mode	POINTING	POINTING	Subarray requested	NONE	NONE
Pointing RA	188.060605	188.059119370856	Alternating exposures requested	N	N
Pointing Dec	2.123008	2.095873179710947	Primary exposure time	0.000000	3.2
Pointing Roll	235.914380	236.0710908693191			
SIM focus pos (mm)	-0.684267	-0.6828225247311905			
SIM defocus (mm)	0	0.001444936568705701			
SIM translation stage pos (mm)	-190.132523	-190.1425803651734			
SIM translation stage offset (mm)	0	0.01005778216563158			
Observation start time	230493945.184000	230492342.72019			
Observation start date	2005-04-21T18:04:41	2005-04-21T17:39:02			
Observation end time	230503500.184000	230503723.2957			
Observation end date	2005-04-21T20:43:56	2005-04-21T20:48:43			
Read mode	TIMED	TIMED			

2.3 Aspect



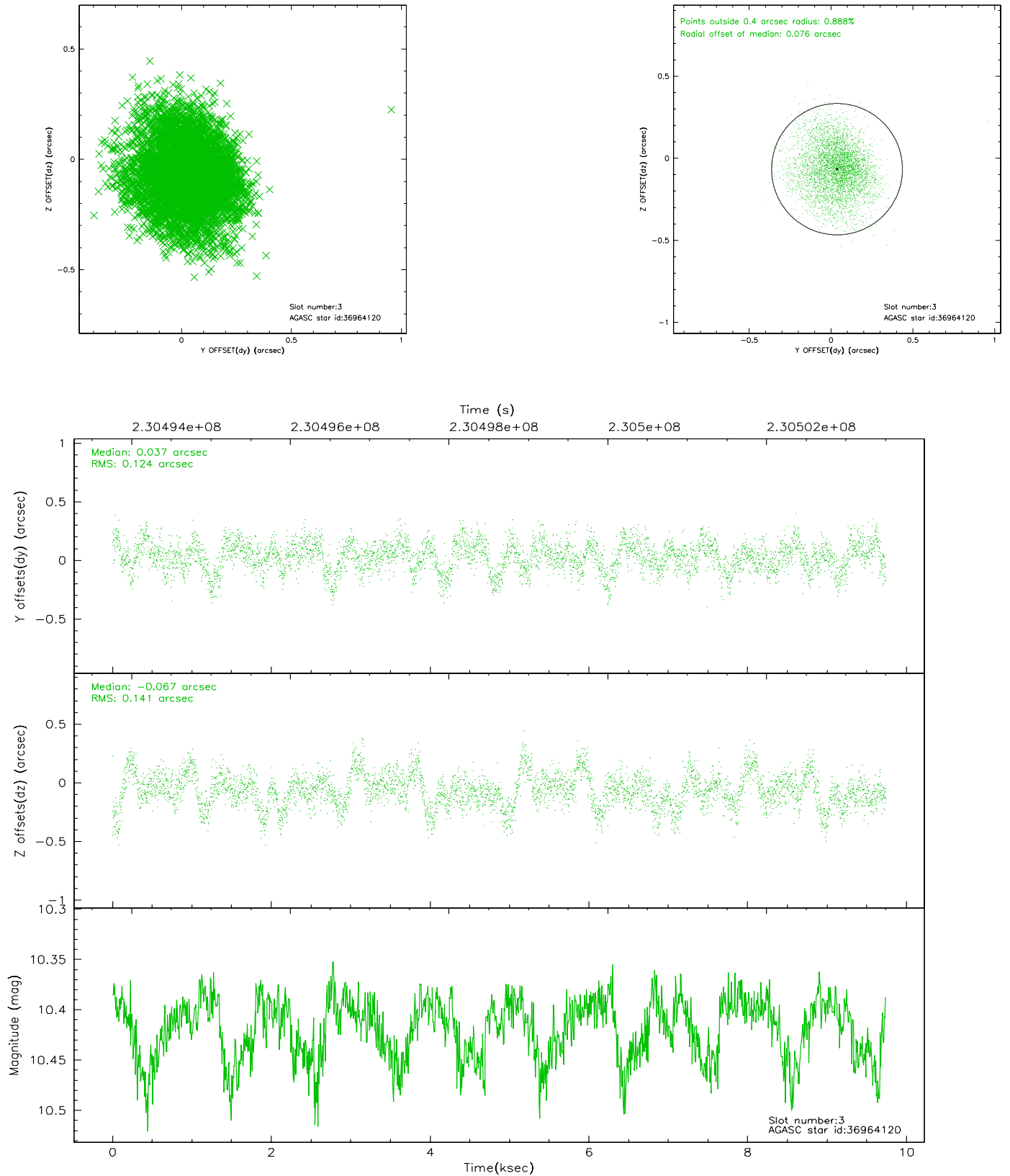


Slot Statistics

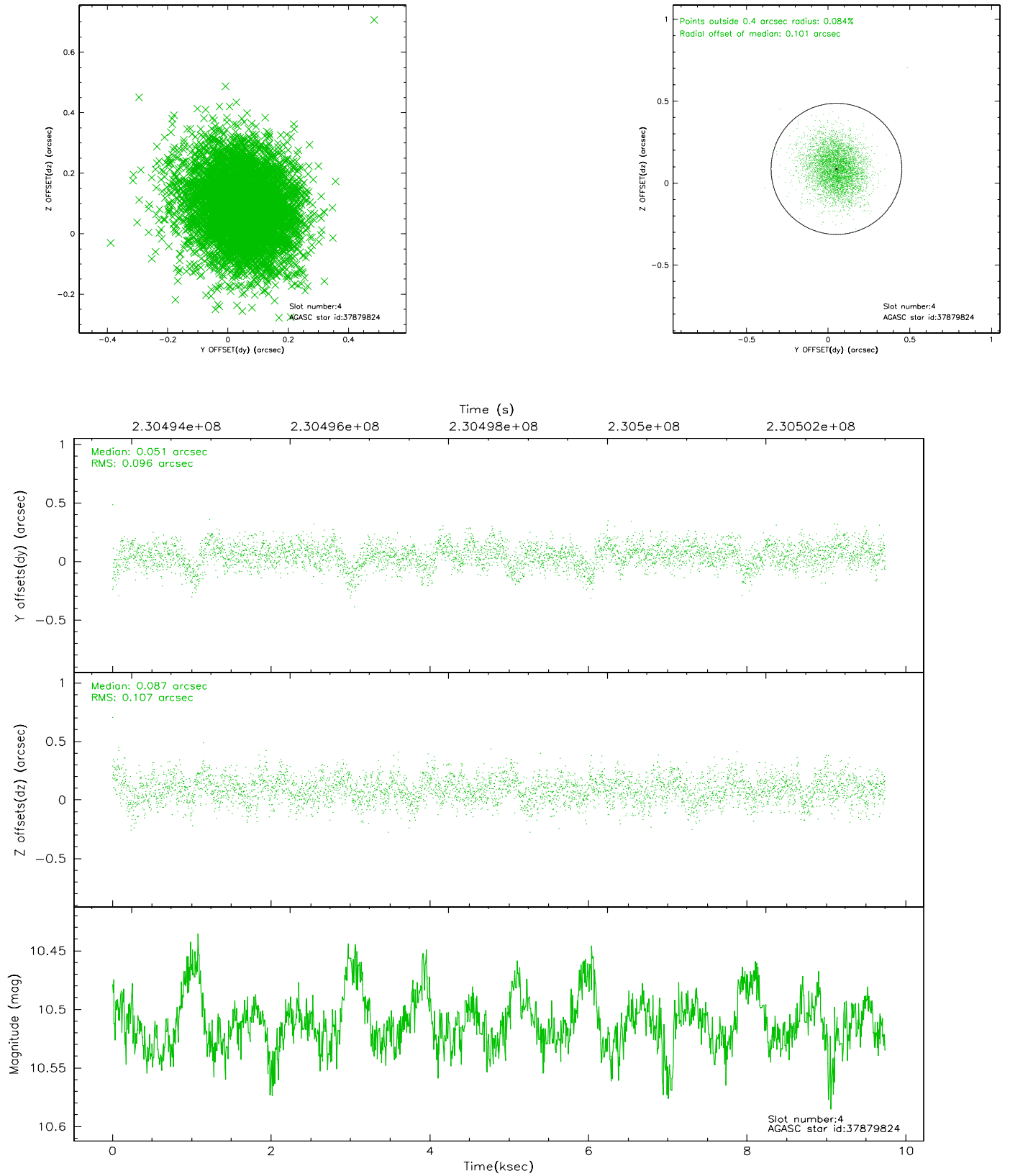
slot	status	id	mag	n_pts	med_dy	med_dz	dr1	dr2	ra	dec	mean_y	mean_z
0	FID	ACIS-S-2	7.10	2376	-0.025	-0.010	0.007	0.011	0.000000	0.000000	-760.83	-1730.83
1	FID	ACIS-S-4	7.20	2376	0.072	0.015	0.005	0.010	0.000000	0.000000	2152.26	177.16
2	FID	ACIS-S-5	7.23	2376	-0.078	0.004	0.006	0.010	0.000000	0.000000	-1813.05	171.38
3	GUIDE	36964120	10.42	4728	0.037	-0.067	0.200	0.326	187.342563	1.977791	1881.21	-1846.37
4	GUIDE	37879824	10.51	4745	0.051	0.087	0.153	0.250	187.728661	2.497183	-445.39	-1743.67
5	GUIDE	37879960	9.09	4750	-0.078	0.020	0.090	0.144	188.579259	2.444508	-2003.96	896.11
6	GUIDE	37880528	10.03	4744	0.040	-0.041	0.130	0.212	187.543867	2.231630	718.10	-1758.32
7	GUIDE	37880408	10.07	4747	-0.039	0.004	0.126	0.210	187.758191	2.290324	111.69	-1238.70

2.4 Star Slots

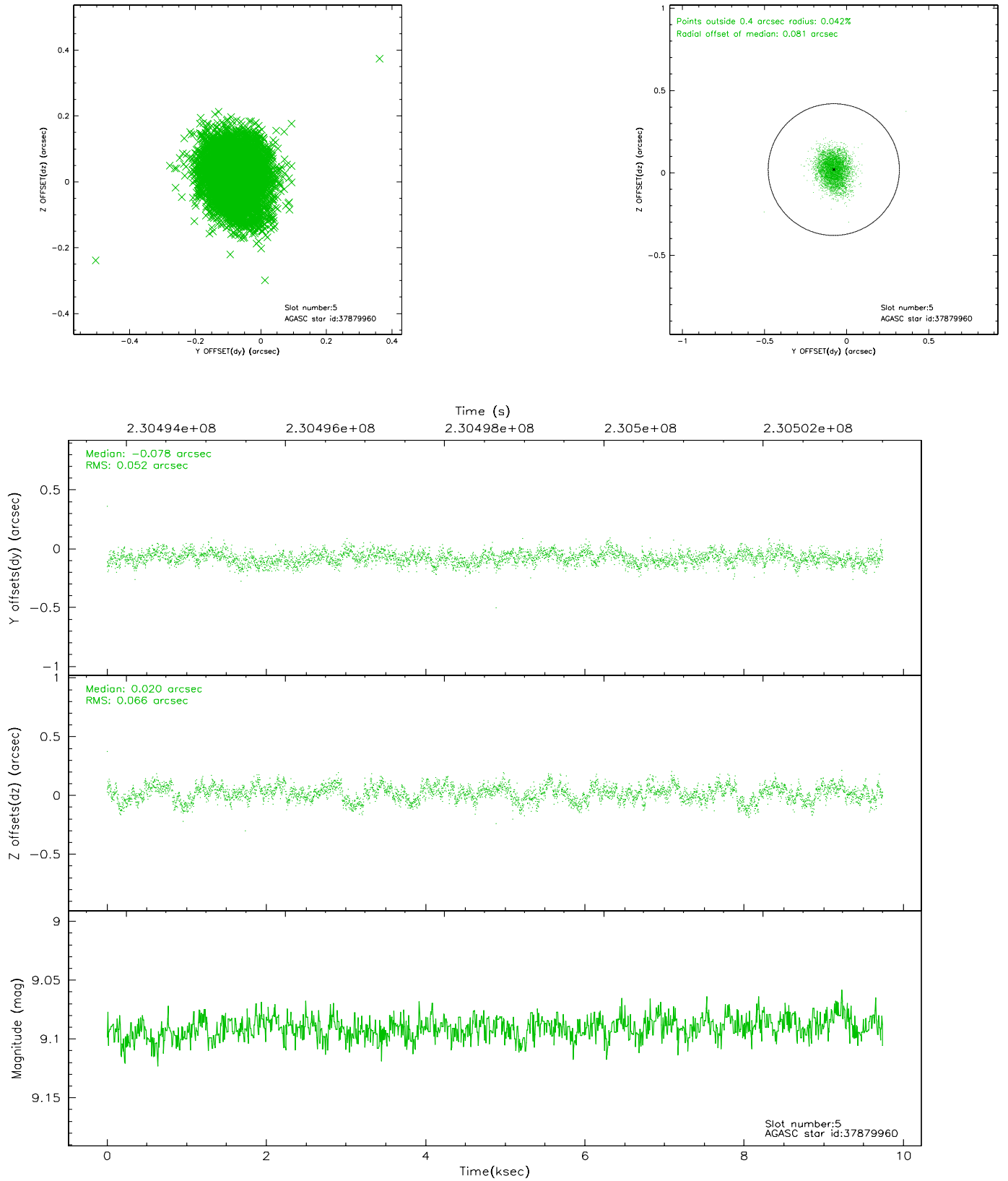
2.4.1 Slot 3



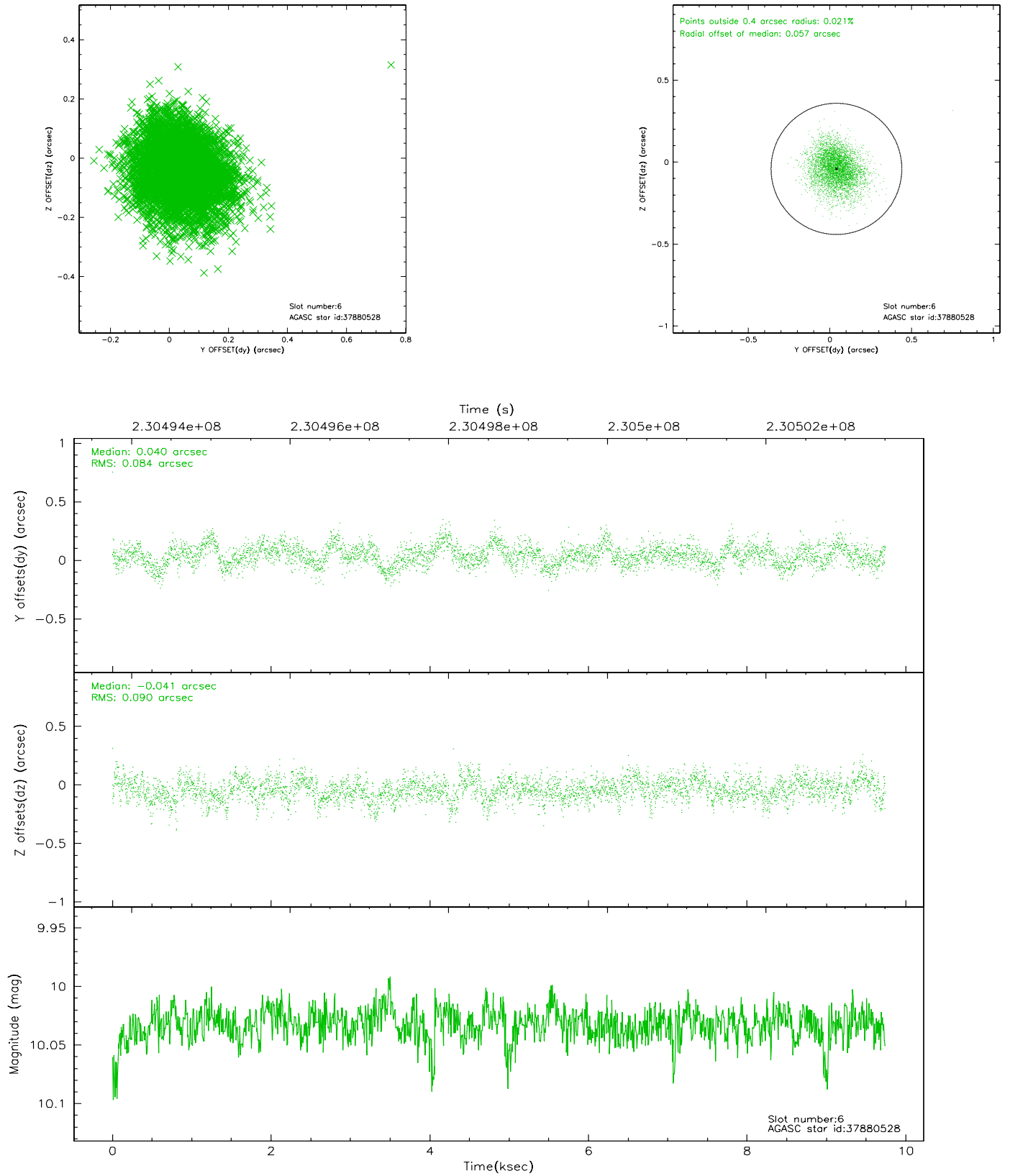
2.4.2 Slot 4



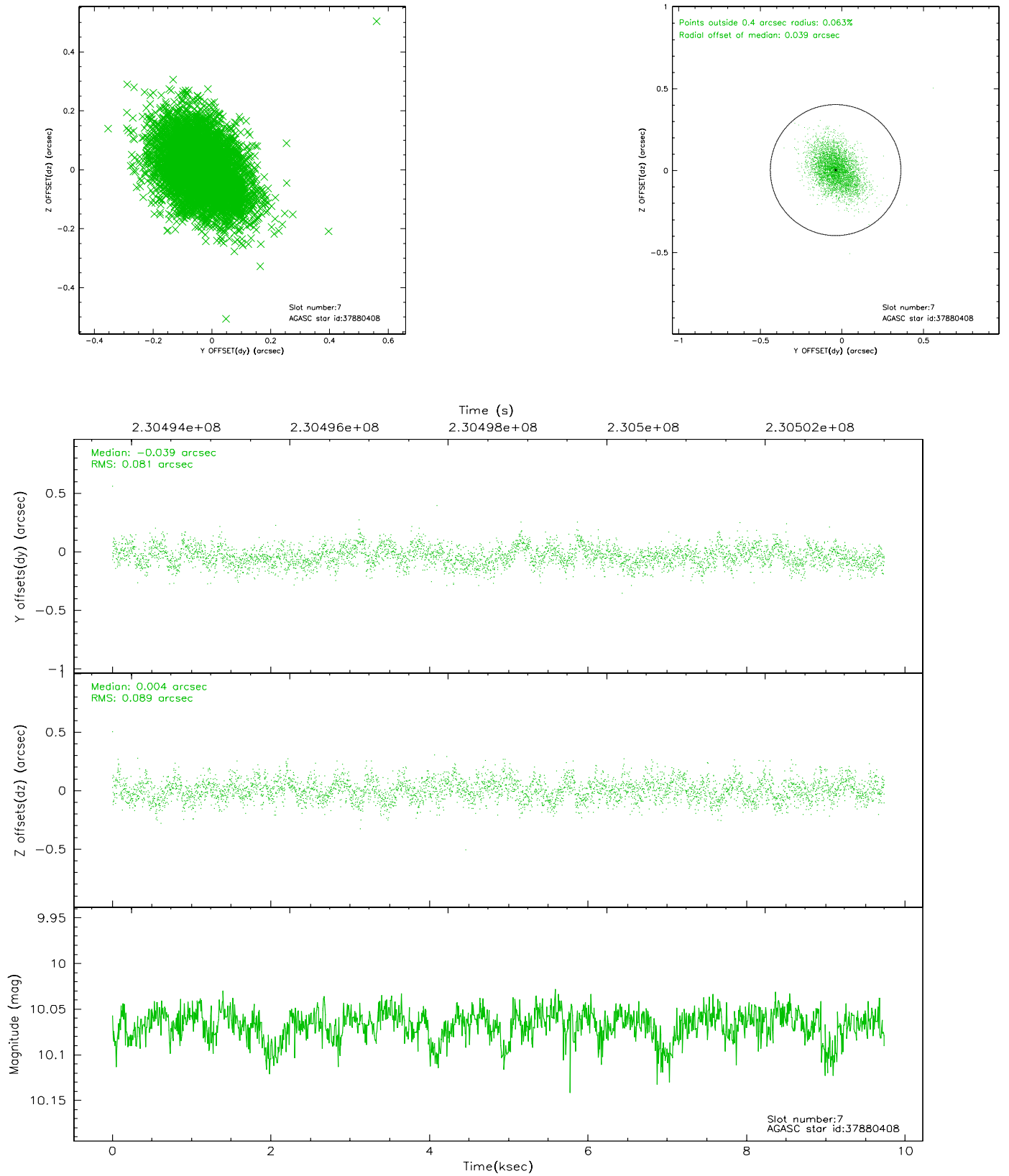
2.4.3 Slot 5



2.4.4 Slot 6

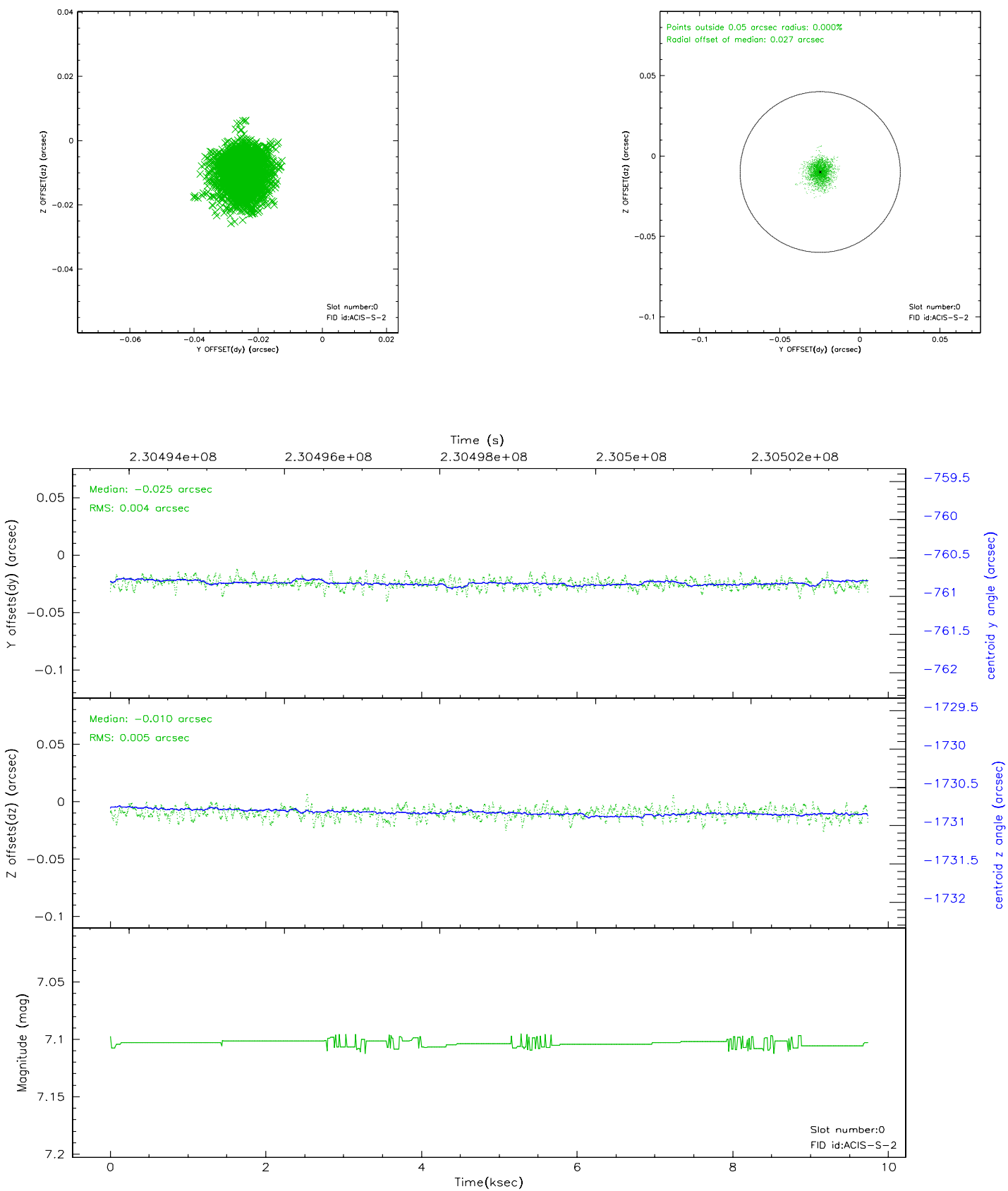


2.4.5 Slot 7

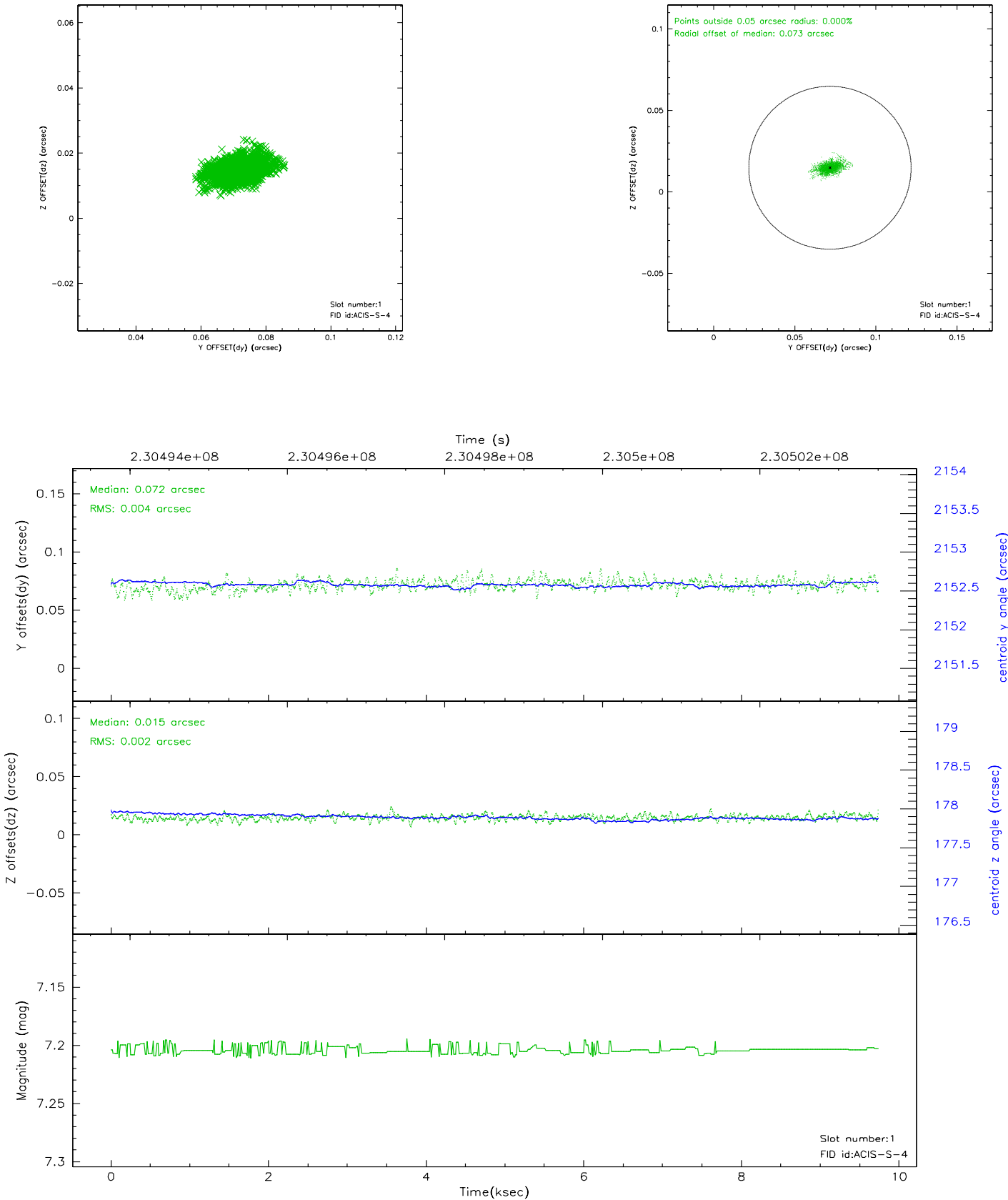


2.5 FID Slots

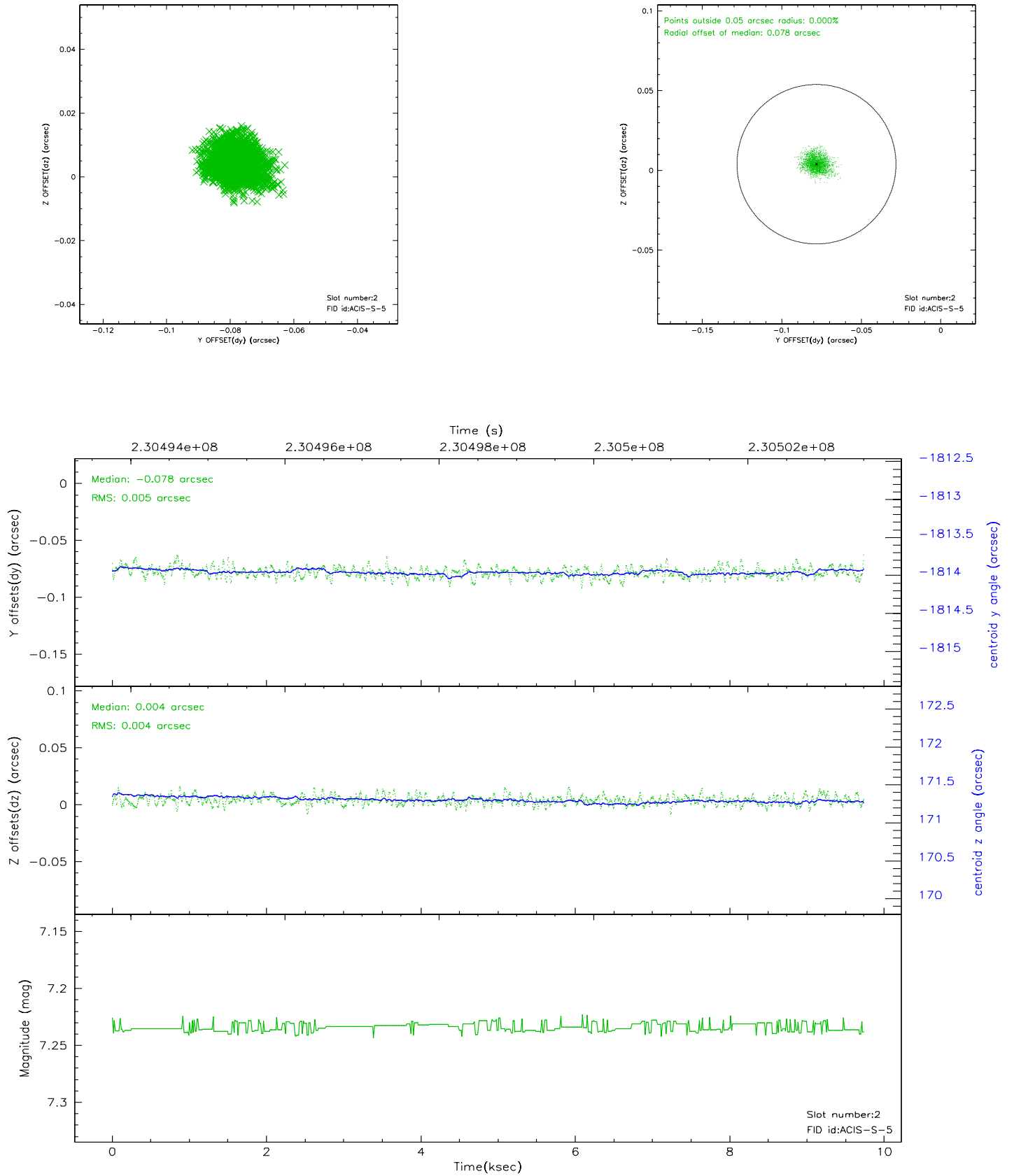
2.5.1 Slot 0



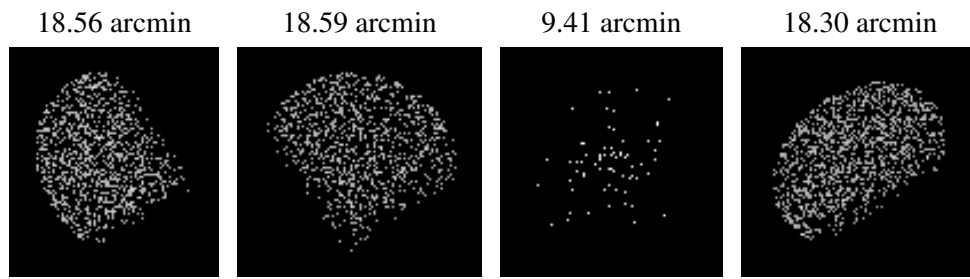
2.5.2 Slot 1



2.5.3 Slot 2



3 Point Sources



A Summary

A.1 Status

V&V Scientist	Jen Lauer
V&V Date (YYYY-MM-DD)	2006.03.02
V&V Edition	1
V&V Disposition and Status	OK
V&V Charge Time	9.734399

A.2 Comments