

# V&V Reference Report

## L2 ASCDS Version : 7.6.7.2

Observation 4909 - L2 Version 001  
Chandra X-Ray Center

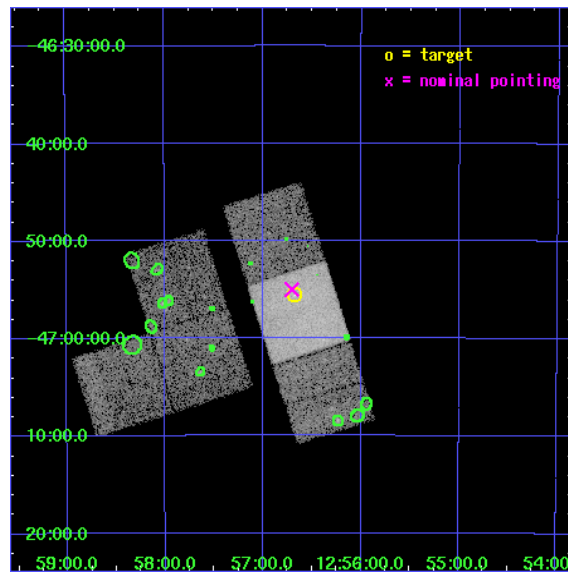
L2 Processing Date : Jun 8 2006

## Contents

<b>1</b>	<b>Front</b>	<b>2</b>
<b>2</b>	<b>OBI</b>	<b>3</b>
2.1	OBI . . . . .	3
2.1.1	Images . . . . .	3
2.1.2	Bias . . . . .	3
2.1.3	Parameters . . . . .	4
2.1.4	Events . . . . .	4
2.2	Compared Parameters . . . . .	5
2.3	Aspect . . . . .	6
2.4	Star Slots . . . . .	9
2.4.1	Slot 3 . . . . .	9
2.4.2	Slot 4 . . . . .	10
2.4.3	Slot 5 . . . . .	11
2.4.4	Slot 6 . . . . .	12
2.4.5	Slot 7 . . . . .	13
2.5	FID Slots . . . . .	14
2.5.1	Slot 0 . . . . .	14
2.5.2	Slot 1 . . . . .	15
2.5.3	Slot 2 . . . . .	16
<b>3</b>	<b>Point Sources</b>	<b>17</b>
<b>A</b>	<b>Summary</b>	<b>18</b>
A.1	Status . . . . .	18
A.2	Comments . . . . .	18

# 1 Front

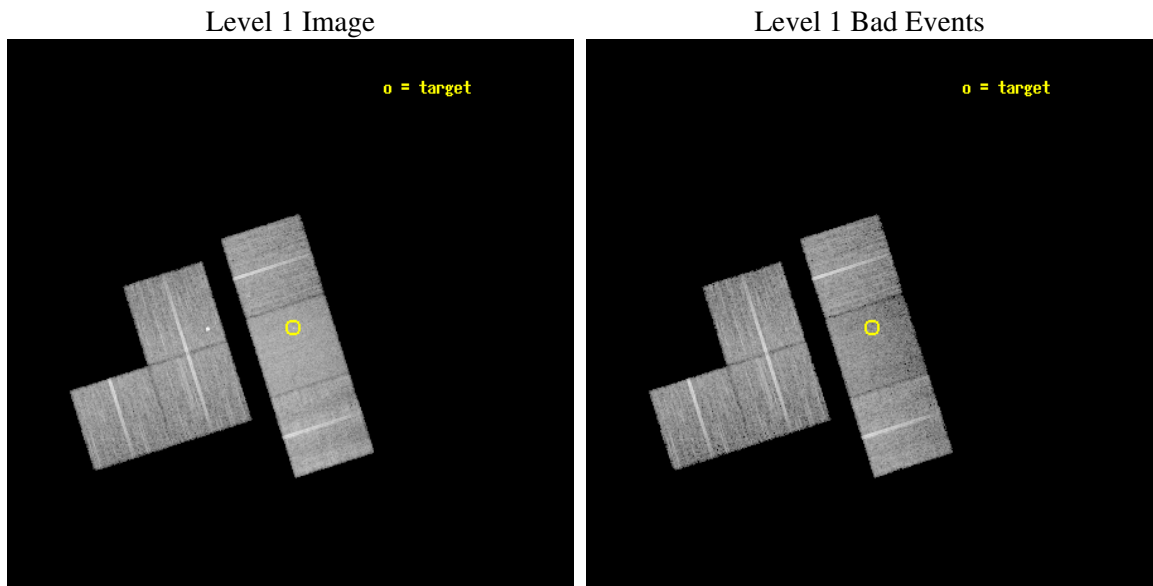
seq_num	700990
obs_id	4909
title	Chandra Study of Water Megamaser AGN: Do Type-2 Objects Form a Heterogeneous Class?
observer	Dr Lincoln Greenhill
object	ESO269-G012
dtcycle	0
cycle	P
ra_targ	194.169583
dec_targ	-46.925278
ra_nom	194.17617239416
dec_nom	-46.916721817099
roll_nom	72.362295485275
revision	2
ontime	17900.021517992
livetime	17673.360667432
ontime1	17909.744488627
ontime2	17912.985429049
ontime3	17912.985349238
ontime6	17916.226409048
ontime7	17900.021517992
ontime8	17909.744508535
l2events	100962



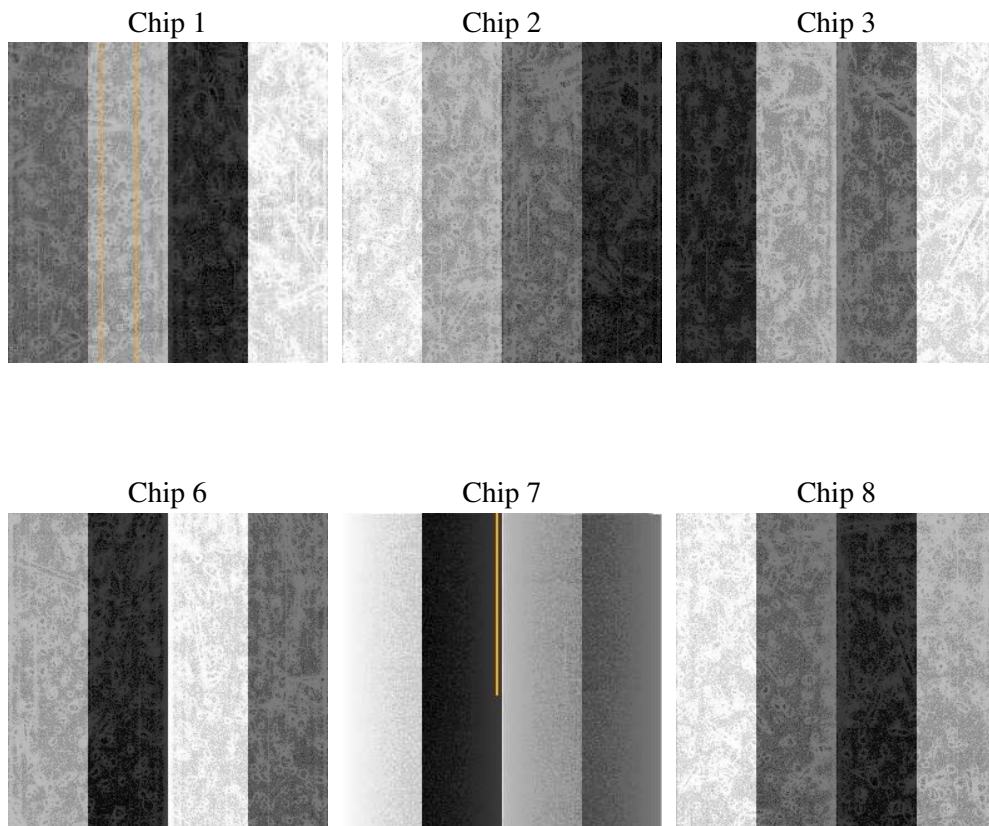
## 2 OBI

### 2.1 OBI

#### 2.1.1 Images



#### 2.1.2 Bias



### 2.1.3 Parameters

obi_num	0
ascdsver	7.6.7.2
caldbver	3.2.2
date	2006-06-08T05:54:01
revision	2

sched_exp_time	18000.000000
ontime	17903.292386979
ontime1	17913.015357614
ontime2	17916.256268114
ontime3	17916.256188303
ontime6	17919.497278035
ontime7	17903.292386979
ontime8	17913.015377522
l1events	602953

### 2.1.4 Events

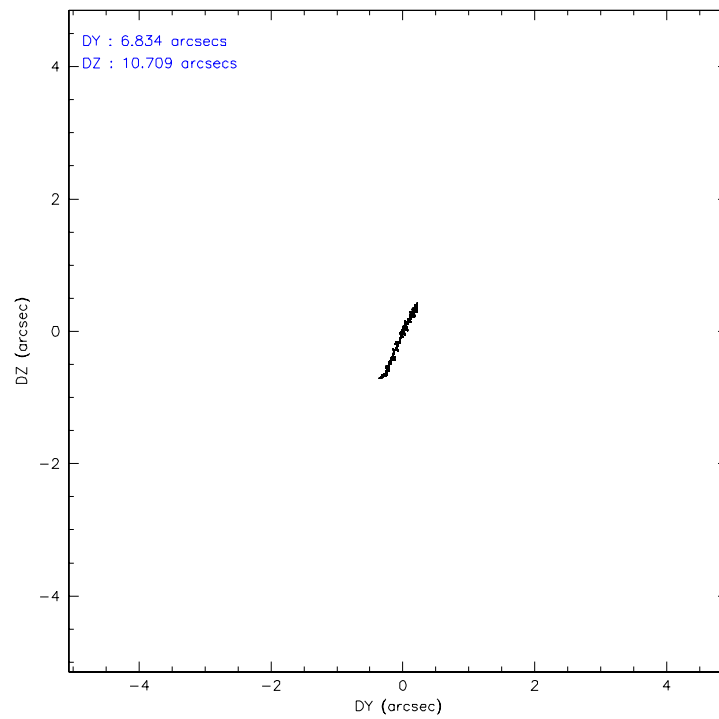
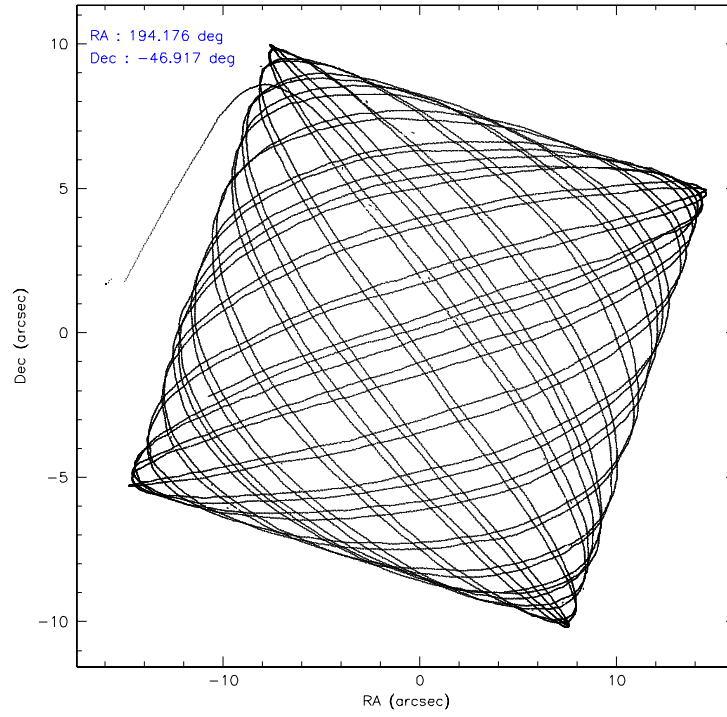
	ccd 1	ccd 2	ccd 3	ccd 6	ccd 7	ccd 8
level 1 events	88852	94596	90234	95528	114297	119446
rejected events	77689	83513	80996	84006	59394	90255
rejected %	87%	88%	89%	87%	51%	75%

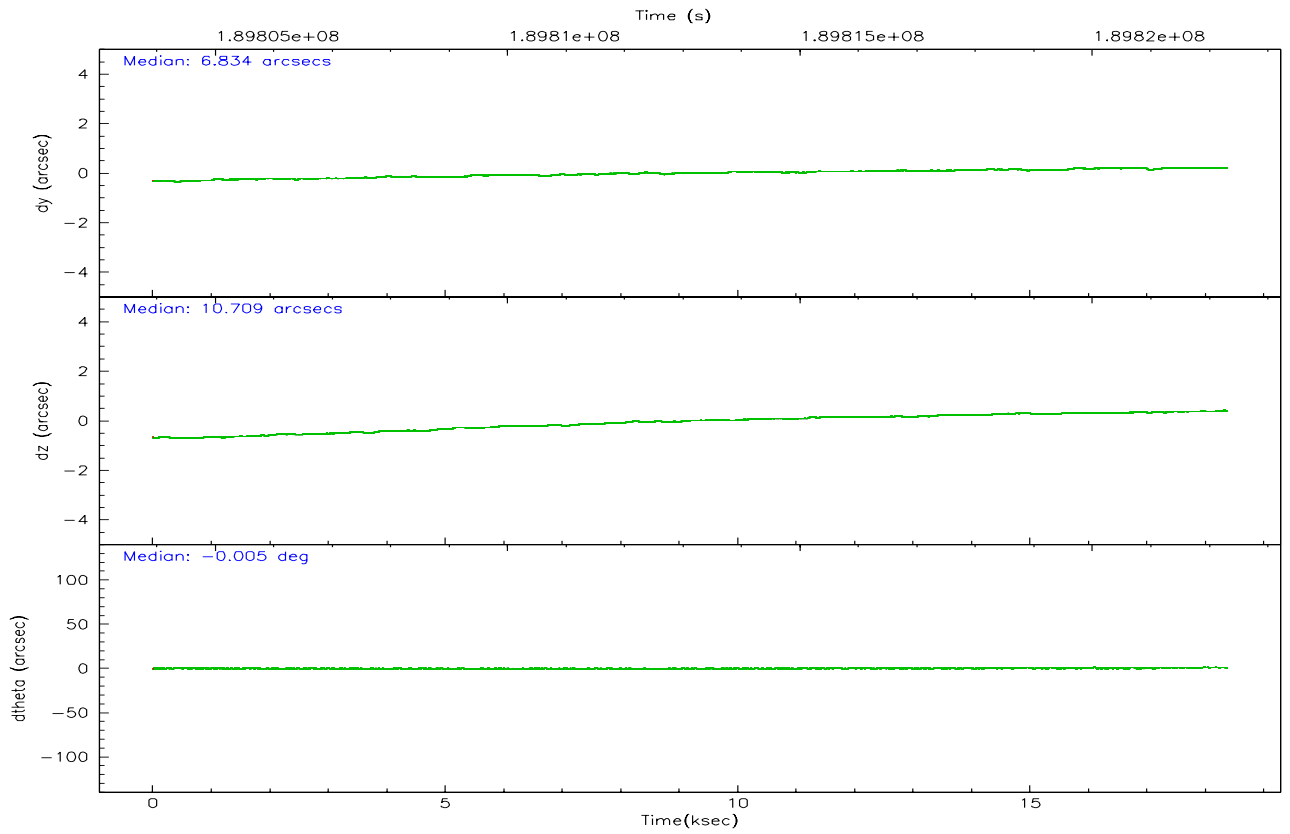
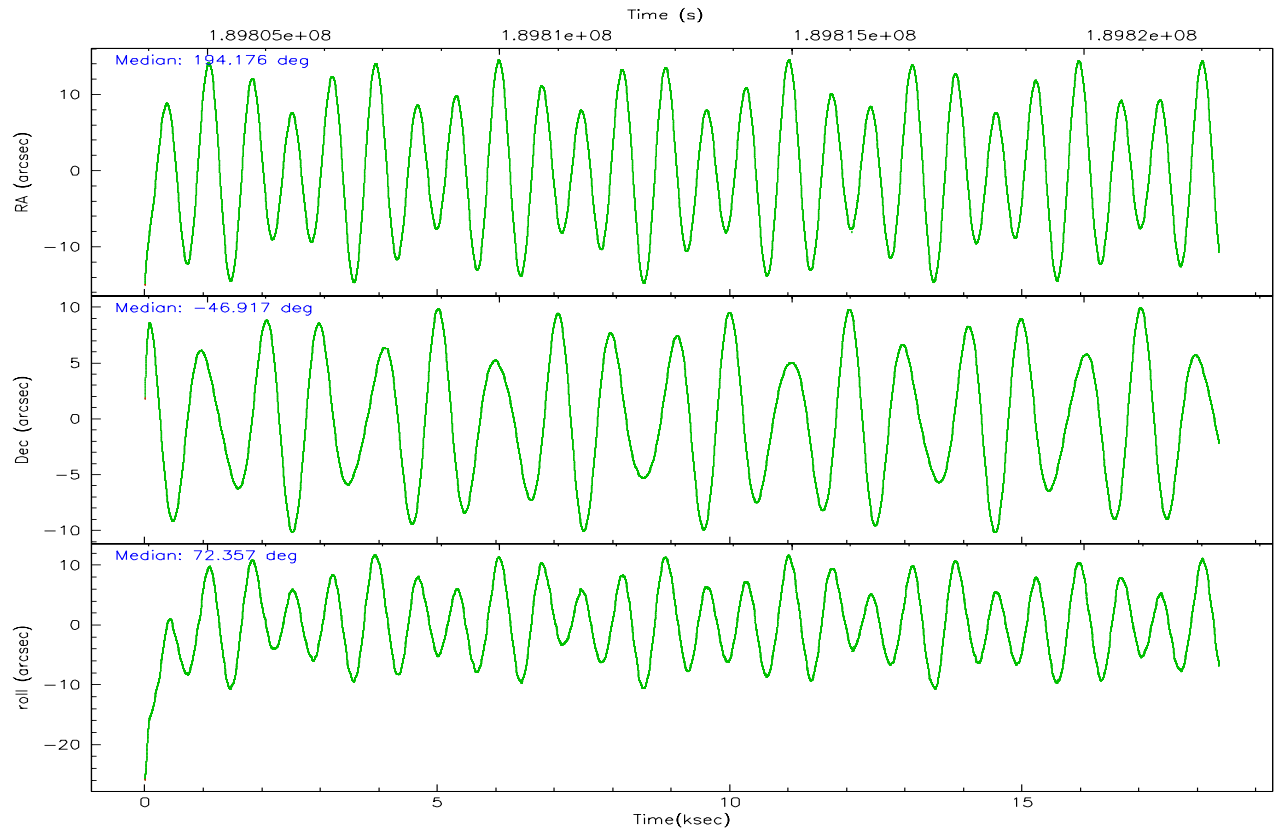
	ccd 1	ccd 2	ccd 3	ccd 6	ccd 7	ccd 8
grade 0 events	4432	5257	3751	4886	3947	10171
	4%	5%	4%	5%	3%	8%
grade 1 events	43	71	55	49	54	89
	0%	0%	0%	0%	0%	0%
grade 2 events	2352	2111	1879	2221	13081	6015
	2%	2%	2%	2%	11%	5%
grade 3 events	1154	977	955	1107	3185	3120
	1%	1%	1%	1%	2%	2%
grade 4 events	1141	1050	957	1195	3158	2942
	1%	1%	1%	1%	2%	2%
grade 5 events	3474	3124	3526	3790	7720	5240
	3%	3%	3%	3%	6%	4%
grade 6 events	2086	1691	1697	2117	31539	6949
	2%	1%	1%	2%	27%	5%
grade 7 events	74170	80315	77414	80163	51613	84920
	83%	84%	85%	83%	45%	71%

## 2.2 Compared Parameters

Parameter	Planned	Actual	Parameter	Planned	Actual
Instrument	ACIS	ACIS	Obspar format version number	6	6
Detector	ACIS-123678	ACIS-123678	Obspar file type	PREDICTED	ACTUAL
Grating	NONE	NONE	Obspar update status	NONE	UPDATED
Data mode	FAINT	FAINT	On-chip summing requested	N	N
Observation mode	POINTING	POINTING	Subarray requested	NONE	NONE
Pointing RA	194.185234	194.176172394162	Alternating exposures requested	N	N
Pointing Dec	-46.943231	-46.91672181709855	Primary exposure time	0.000000	3.2
Pointing Roll	72.212300	72.36229548527483			
SIM focus pos (mm)	-0.684267	-0.6828225247311905			
SIM defocus (mm)	0	0.001444936568705701			
SIM translation stage pos (mm)	-190.132523	-190.1400660498719			
SIM translation stage offset (mm)	0	0.00754346686406393			
Observation start time	189804310.184000	189803250.05724			
Observation start date	2004-01-06T19:24:06	2004-01-06T19:07:30			
Observation end time	189822310.184000	189823025.8956			
Observation end date	2004-01-07T00:24:06	2004-01-07T00:37:05			
Read mode	TIMED	TIMED			

## 2.3 Aspect





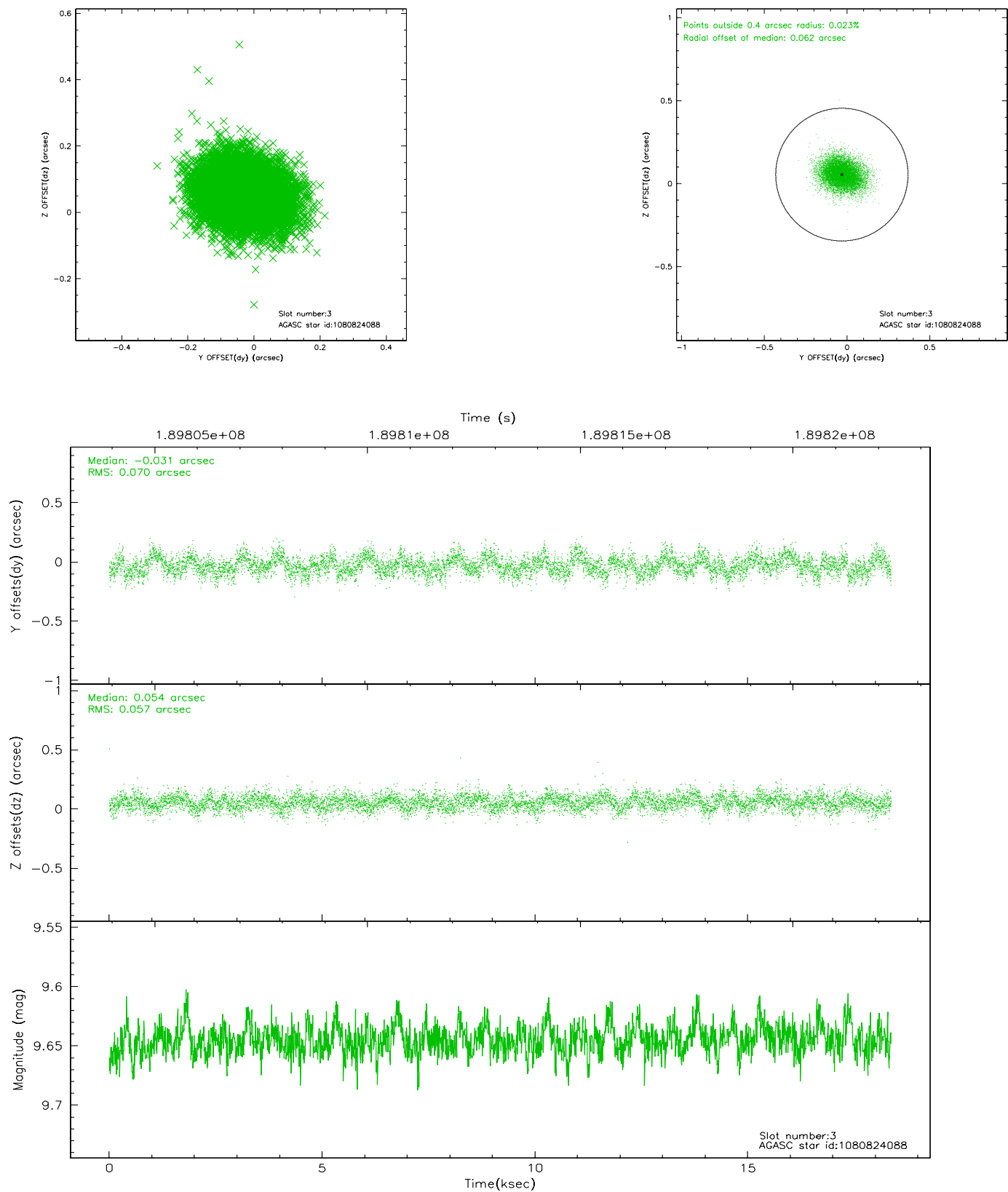
### Slot Statistics

slot	status	id	mag	n_pts	med_dy	med_dz	dr1	dr2	ra	dec	mean_y	mean_z
0	FID	ACIS-S-2	7.10	4435	-0.039	0.009	0.009	0.016	0.000000	0.000000	-759.57	-1731.90
1	FID	ACIS-S-4	7.20	4425	0.034	0.017	0.007	0.016	0.000000	0.000000	2153.64	176.41
2	FID	ACIS-S-5	7.23	4430	-0.025	-0.017	0.007	0.012	0.000000	0.000000	-1812.15	170.23
3	GUIDE	1080824088	9.64	8876	-0.031	0.054	0.095	0.157	194.468696	-46.647571	1226.55	-341.76
4	GUIDE	1081221320	7.89	8895	0.037	-0.224	0.069	0.111	193.689534	-47.319554	-1662.80	736.82
5	GUIDE	1081345808	9.43	8889	-0.043	0.174	0.088	0.141	194.859994	-47.617115	-1816.45	-2302.03
6	GUIDE	1081346280	7.28	8887	0.048	-0.070	0.062	0.098	194.545007	-47.064949	-149.47	-974.45
7	GUIDE	1081346296	9.39	8885	-0.010	0.056	0.085	0.138	194.759799	-47.165765	-337.72	-1585.11

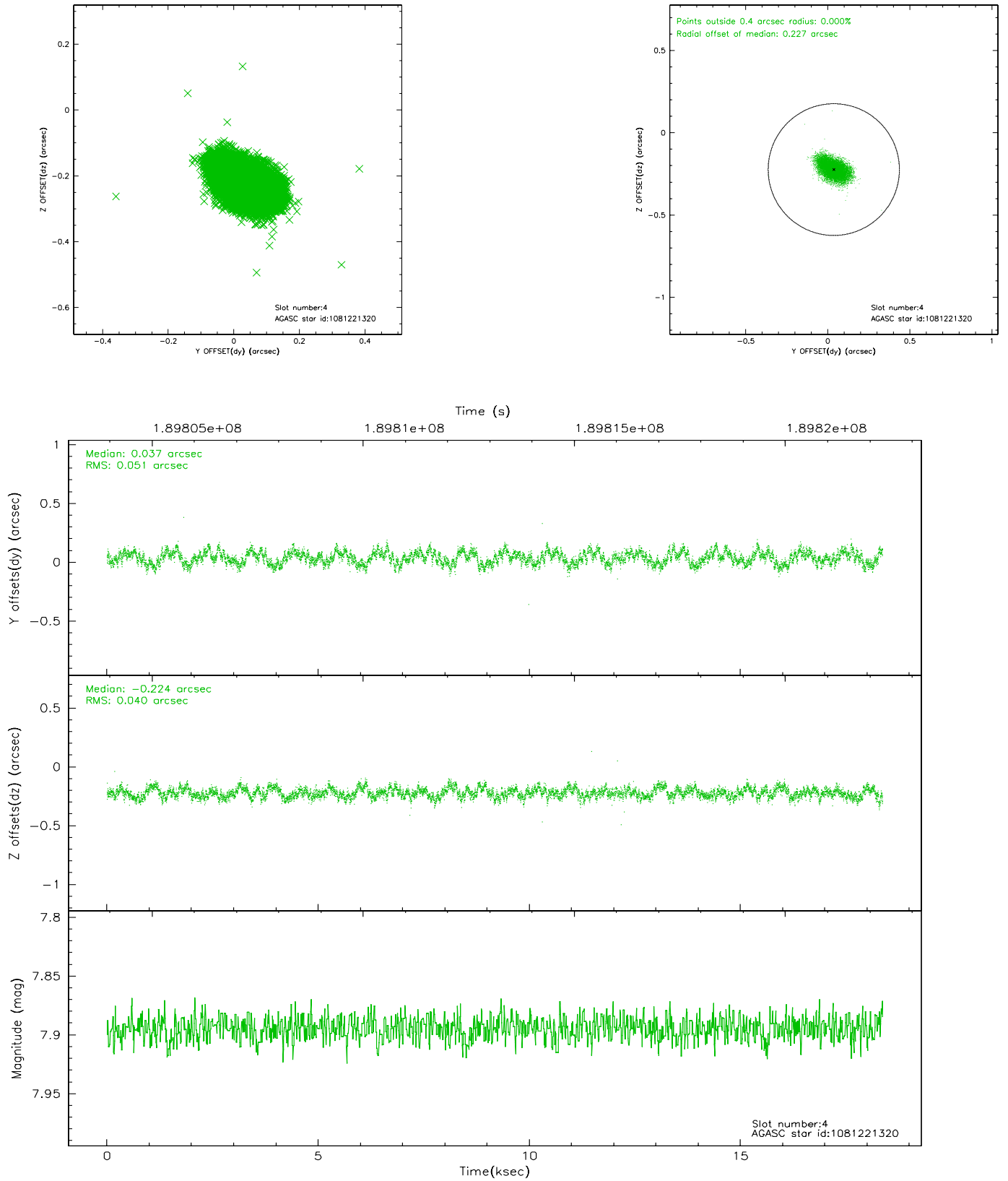


## 2.4 Star Slots

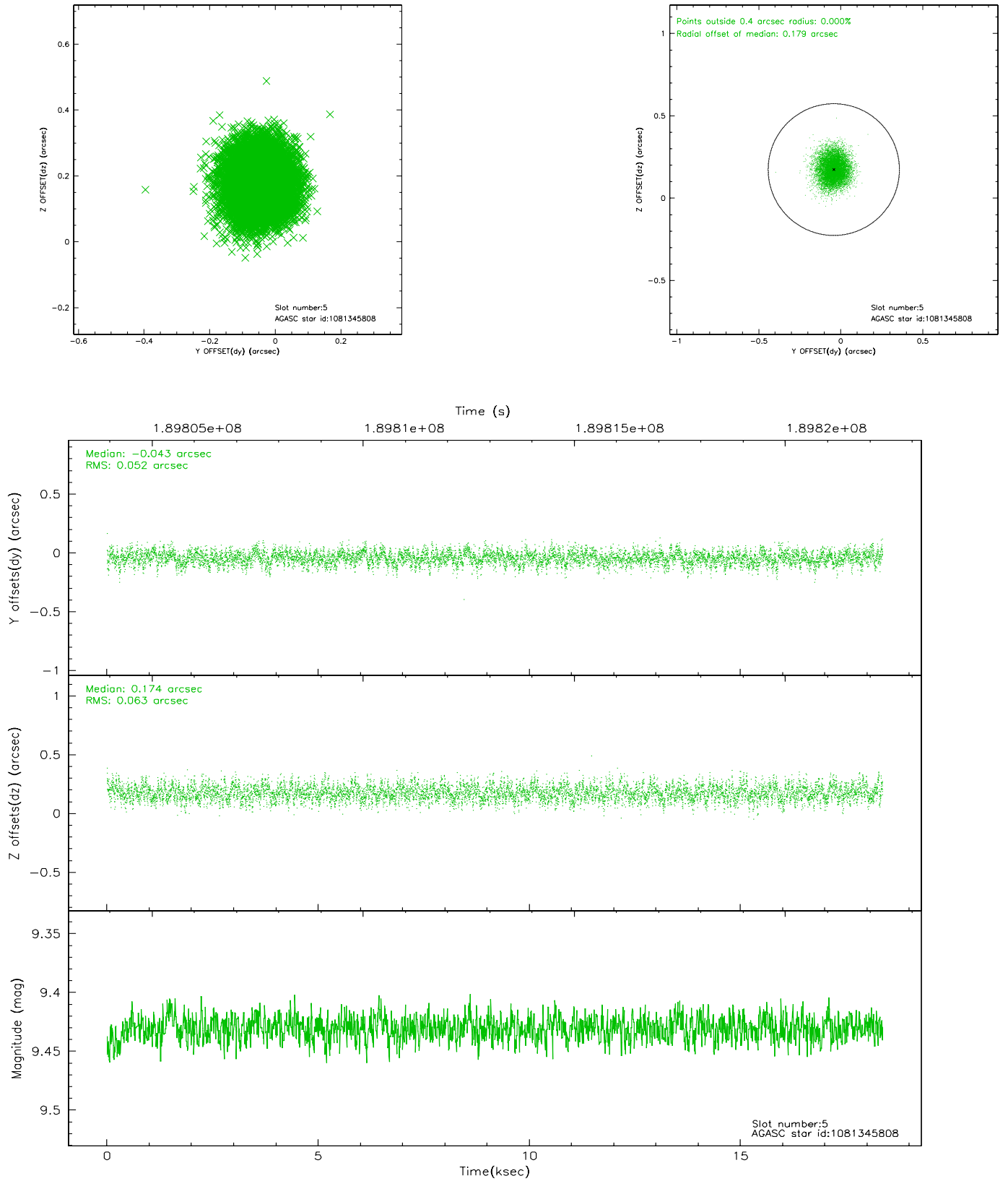
### 2.4.1 Slot 3



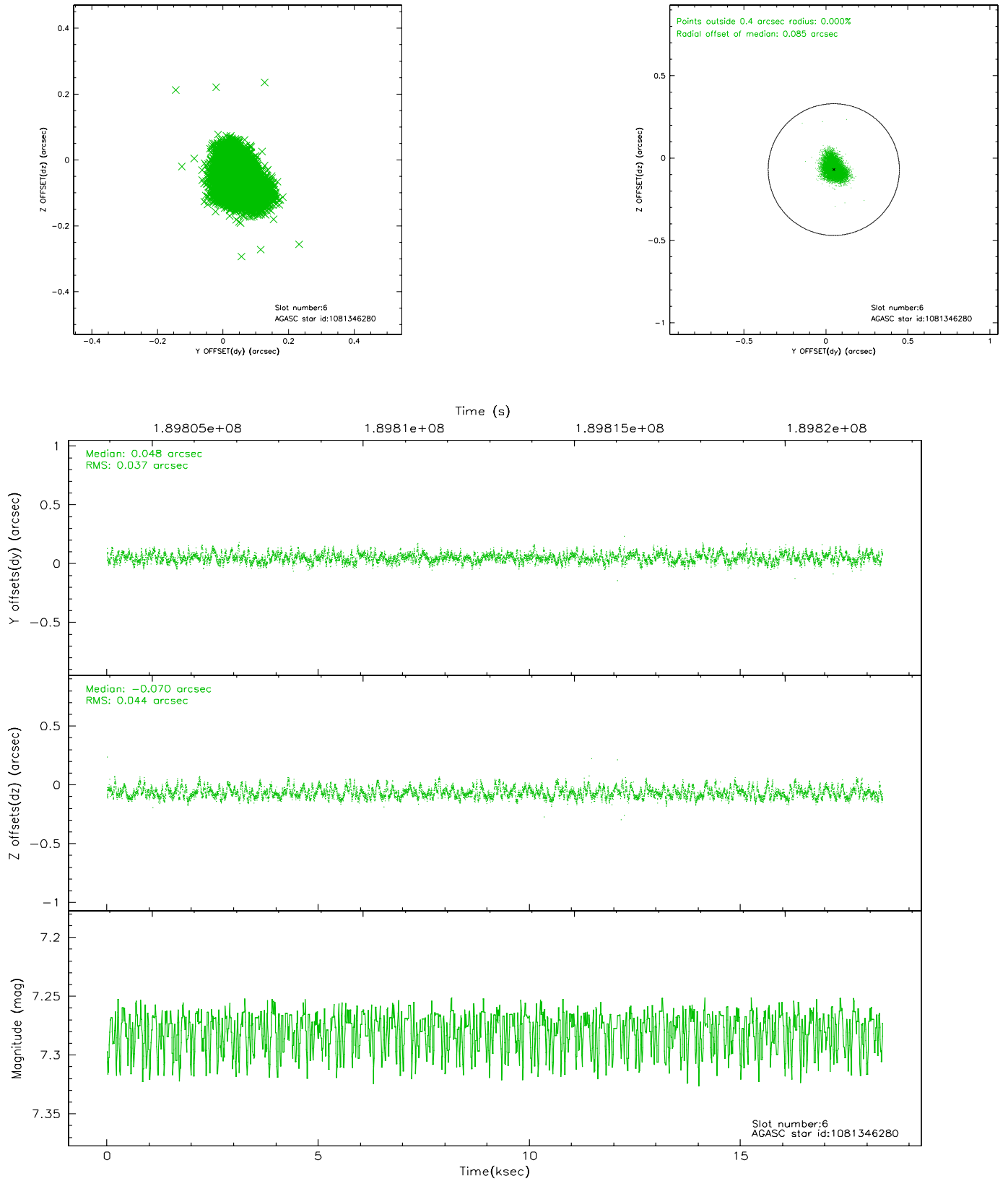
## 2.4.2 Slot 4



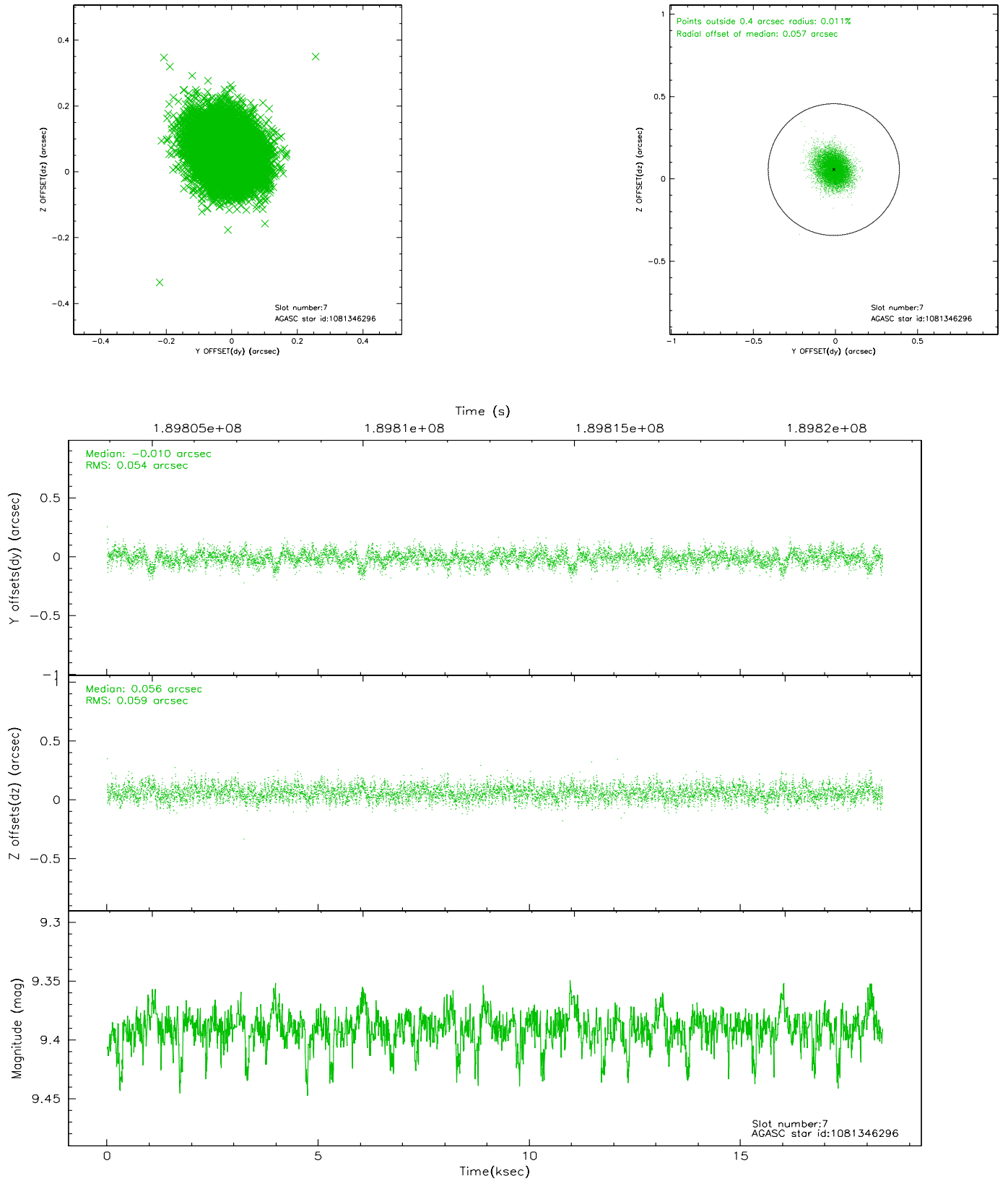
### 2.4.3 Slot 5



## 2.4.4 Slot 6

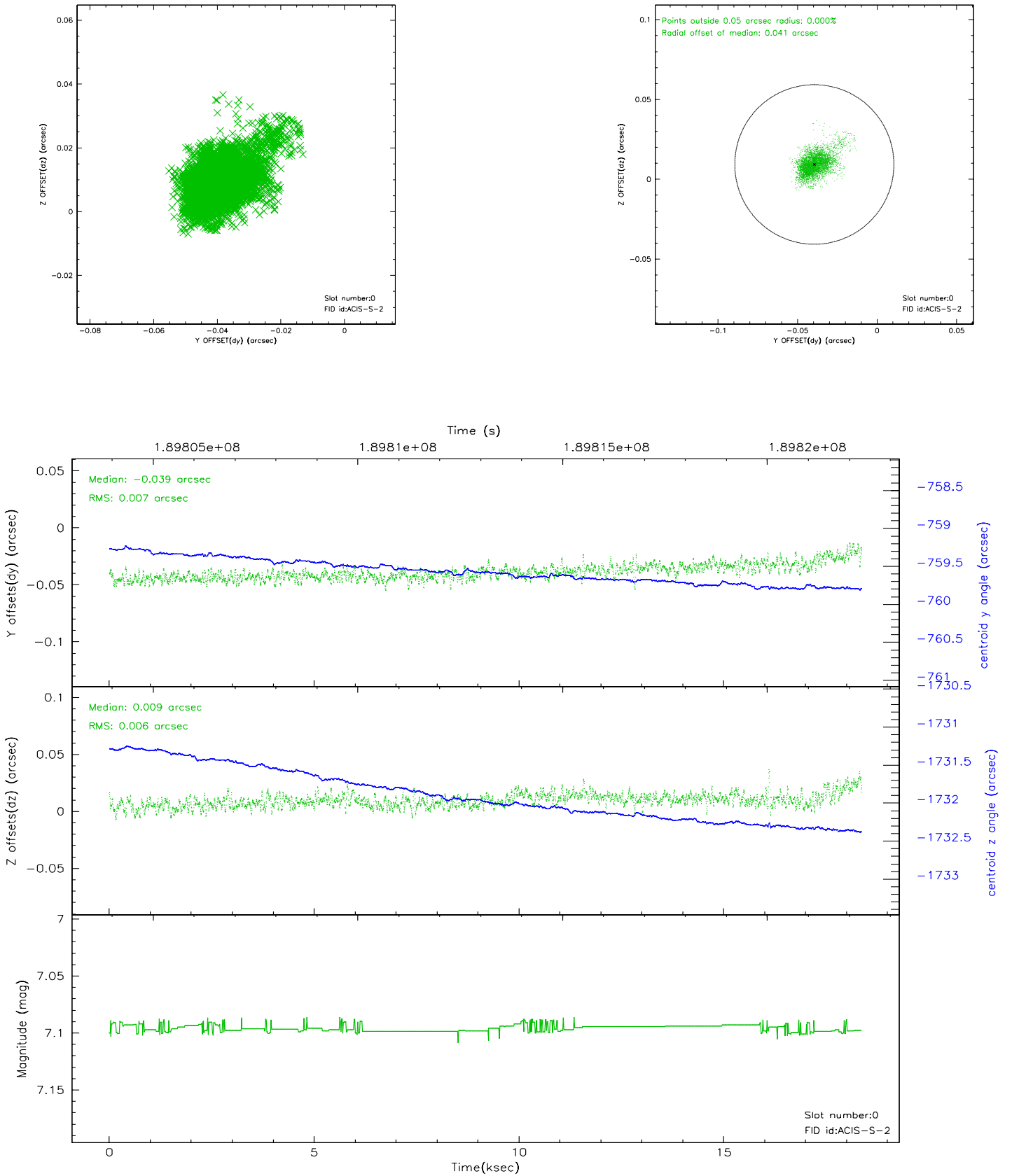


## 2.4.5 Slot 7

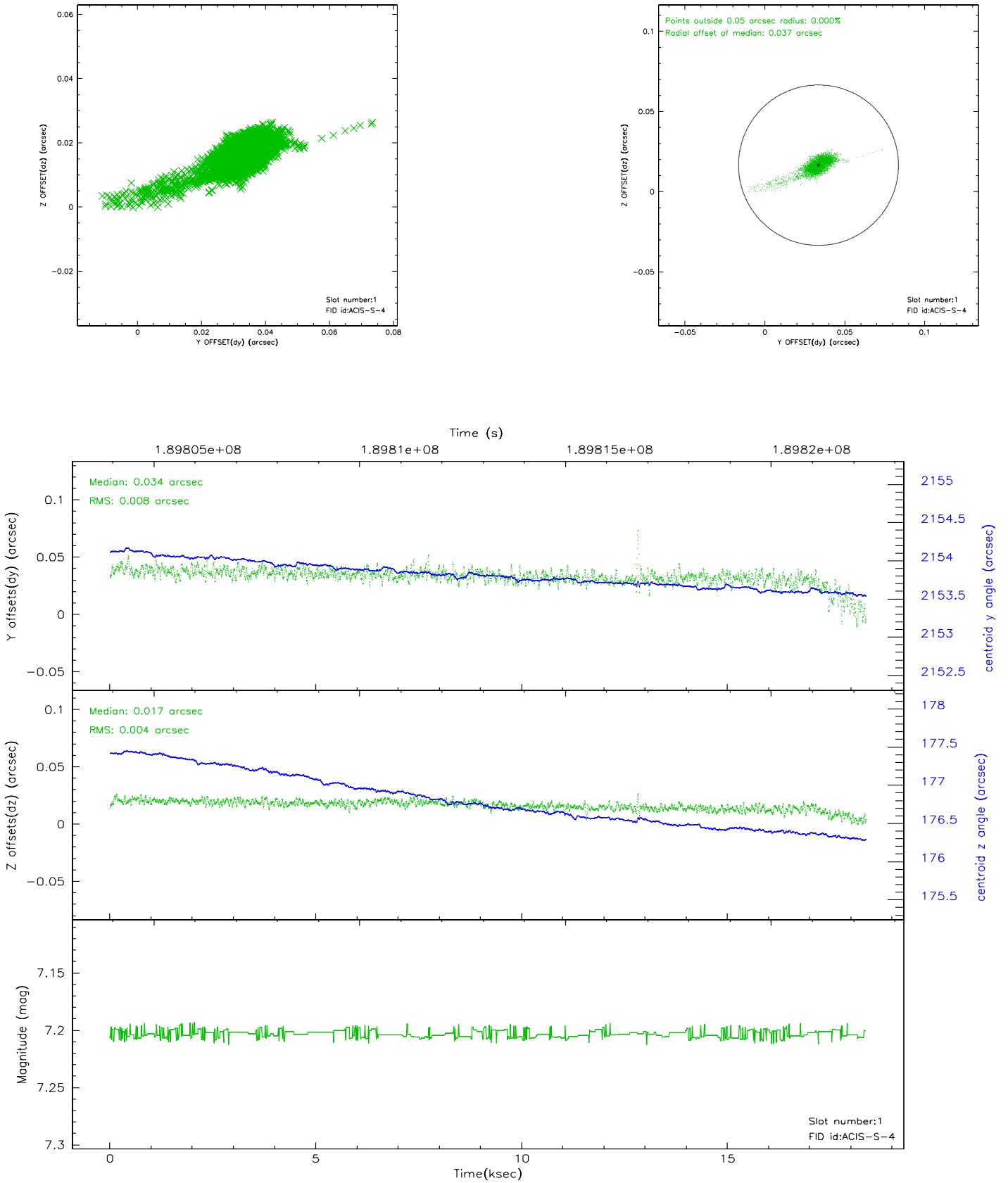


## 2.5 FID Slots

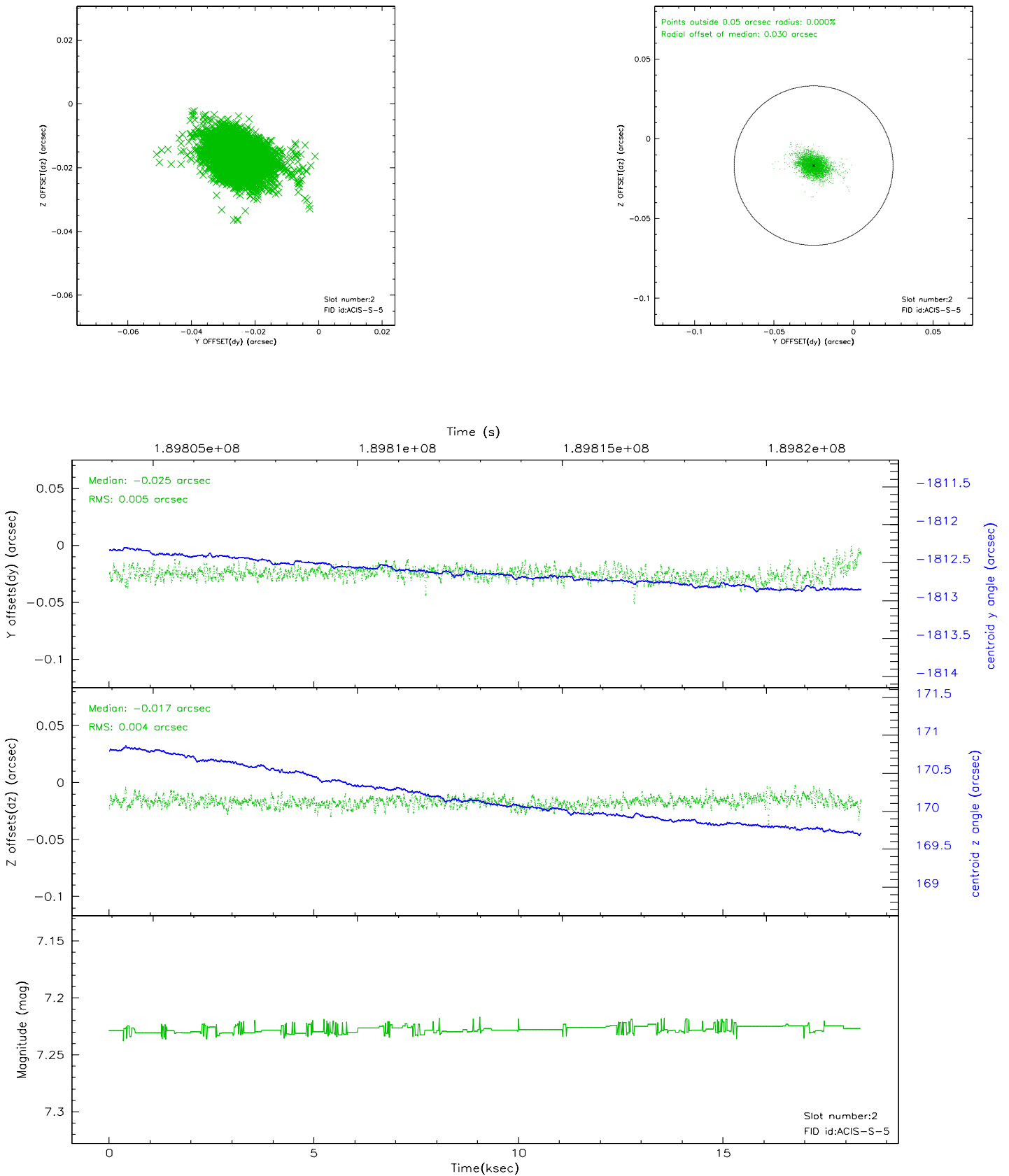
### 2.5.1 Slot 0



## 2.5.2 Slot 1

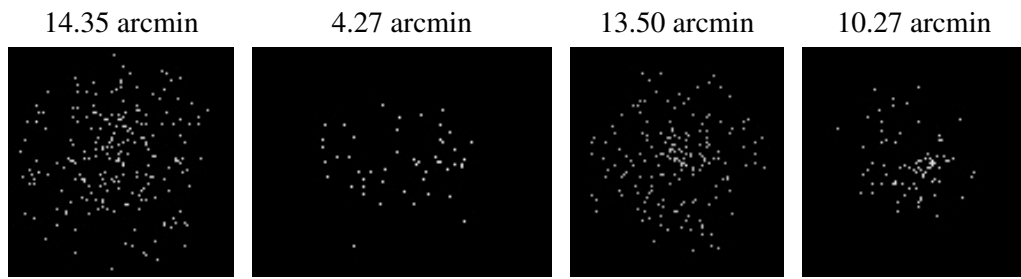


### 2.5.3 Slot 2





### 3 Point Sources



# A Summary

## A.1 Status

V&V Scientist	Joy Nichols
V&V Date (YYYY-MM-DD)	2006.06.08
V&V Edition	1
V&V Disposition and Status	OK
V&V Charge Time	17.87

## A.2 Comments

Charge time for this ObsId remains at original value of 17.87 ks, although with the current processing the charge time would have been 17.900 ksec.

Spike in count rate from about 10 counts per second to about 50-60 counts per second between 12.5 and 13.5 ksec into the observation. Most of this time period is not included in the good time interval, and therefore is not in the Level 2 data products.