

V&V Reference Report

L2 ASCDS Version : 7.6.7.2

Observation 4889 - L2 Version 001
Chandra X-Ray Center

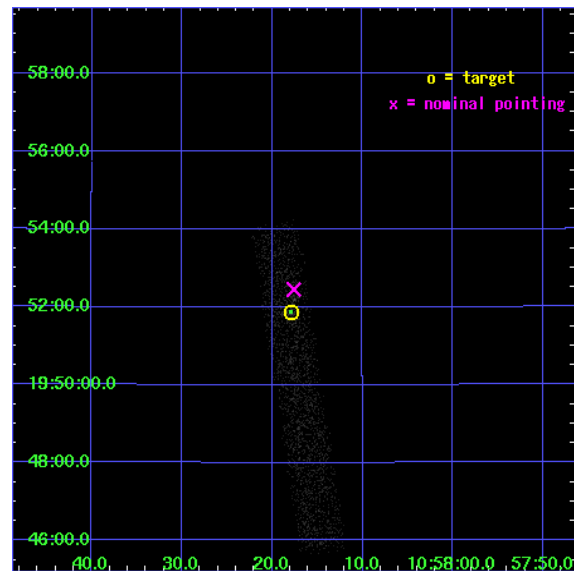
L2 Processing Date : Jun 6 2006

Contents

1	Front	2
2	OBI	3
2.1	OBI	3
2.1.1	Images	3
2.1.2	Bias	3
2.1.3	Parameters	4
2.1.4	Events	4
2.2	Compared Parameters	5
2.3	Aspect	6
2.4	Star Slots	9
2.4.1	Slot 3	9
2.4.2	Slot 4	10
2.4.3	Slot 5	11
2.4.4	Slot 6	12
2.4.5	Slot 7	13
2.5	FID Slots	14
2.5.1	Slot 0	14
2.5.2	Slot 1	15
2.5.3	Slot 2	16
3	Point Sources	17
A	Summary	18
A.1	Status	18
A.2	Comments	18

1 Front

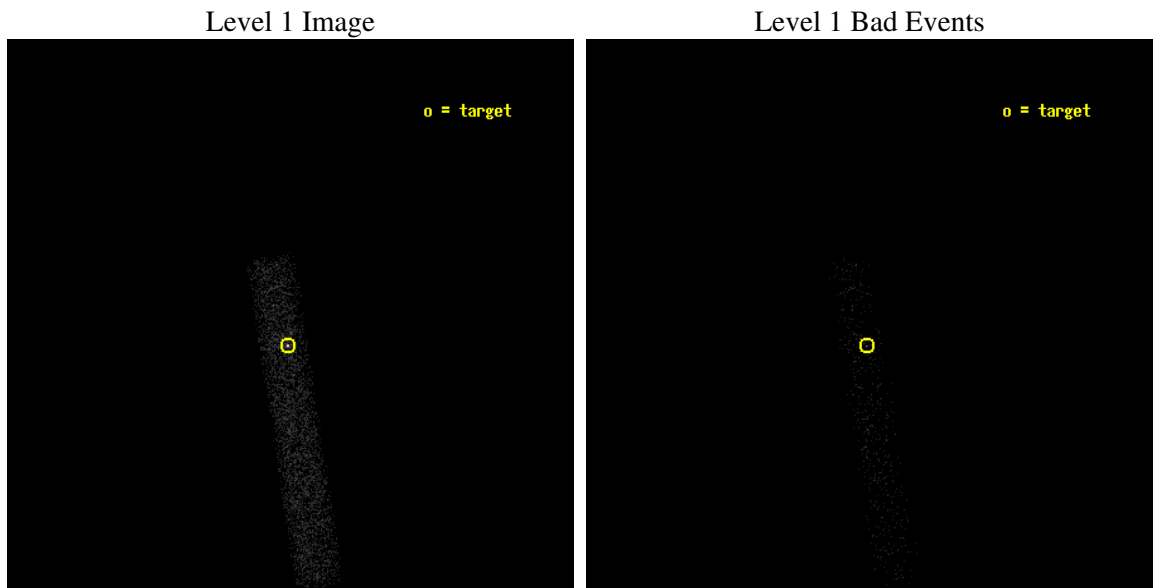
seq_num	700971
obs_id	4889
title	Continuing a Flux-limited Survey for X-ray Emission from Radio Jets
observer	Dr. Herman Marshall
object	1055+201
dtcycle	0
cycle	P
ra_targ	164.574583
dec_targ	19.864139
ra_nom	164.57340781304
dec_nom	19.87401115964
roll_nom	81.305023715763
revision	2
ontime	5175.6000771224
liveltime	4693.9960793783
ontime7	5175.6000771224
l2events	3625



2 OBI

2.1 OBI

2.1.1 Images



2.1.2 Bias

Chip 7



2.1.3 Parameters

obi_num	0
ascdsver	7.6.7.2
caldsver	3.2.2
date	2006-06-06T22:12:06
revision	2

sched_exp_time	5000.000000
ontime	6311.2206052244
ontime7	6311.2206052244
l1events	8231

2.1.4 Events

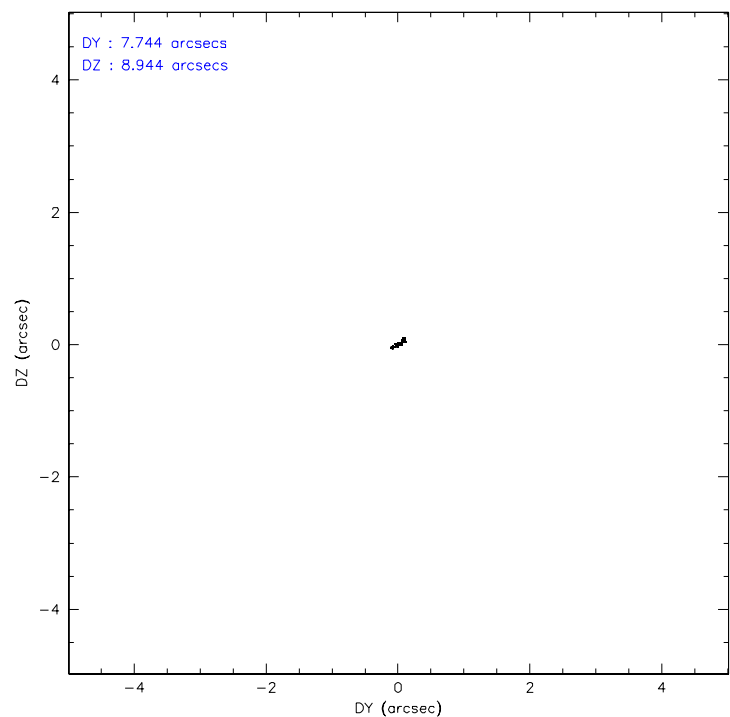
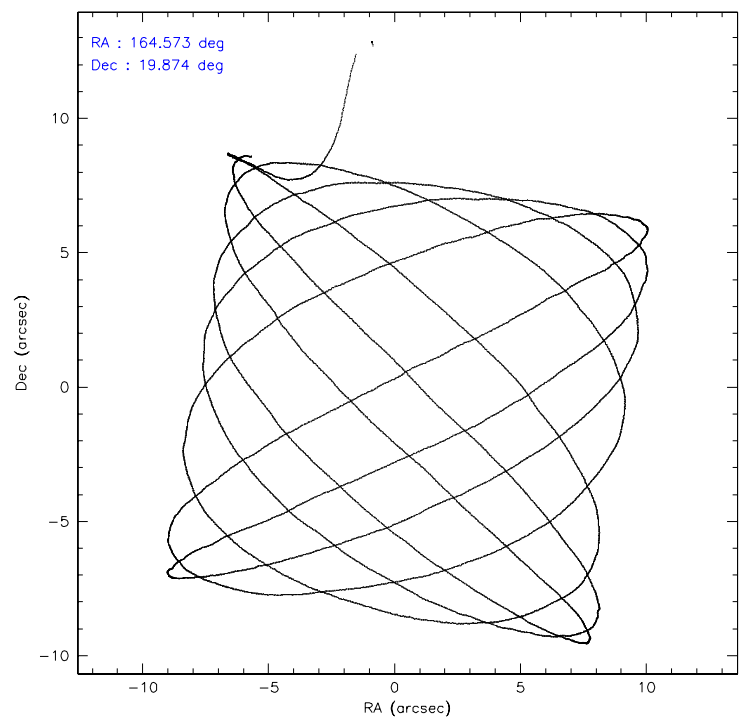
	ccd 7
level 1 events	8231
rejected events	4519
rejected %	54%

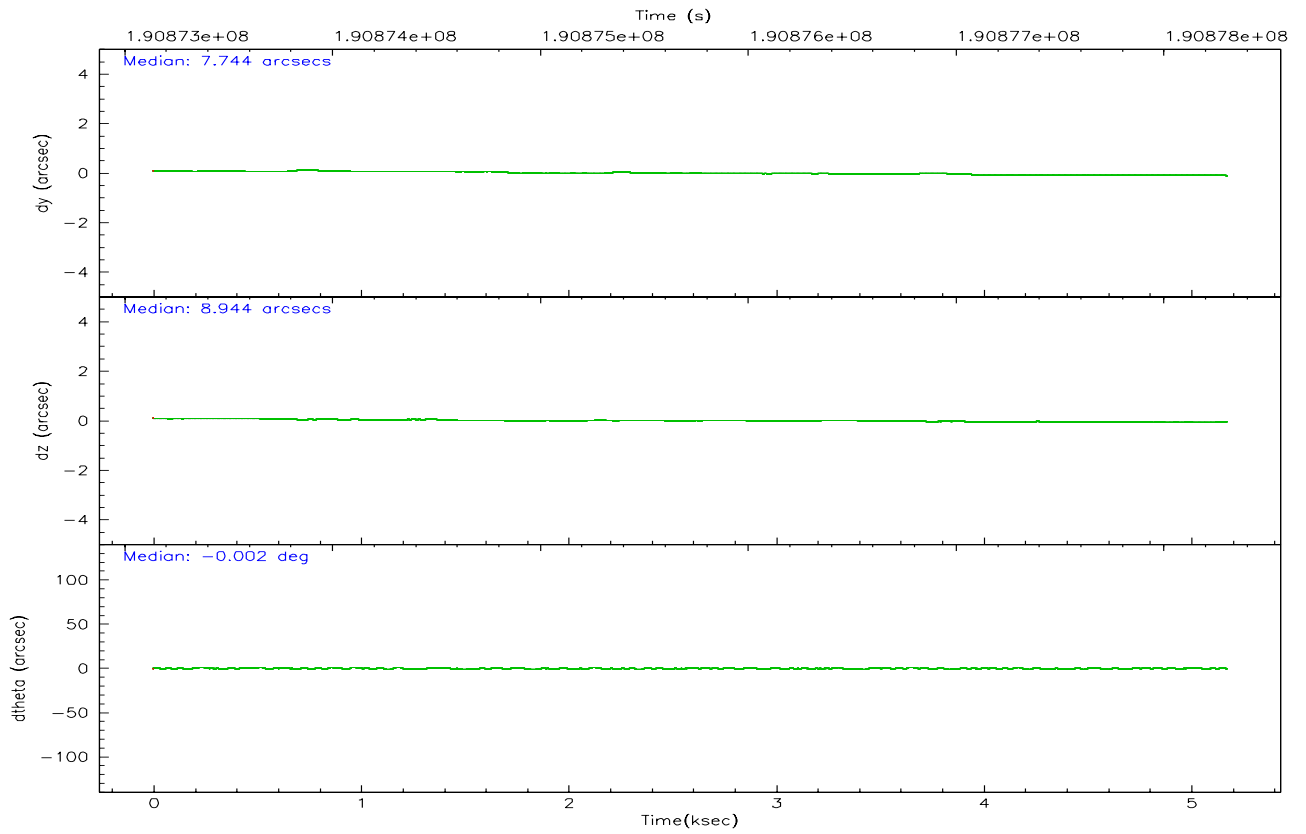
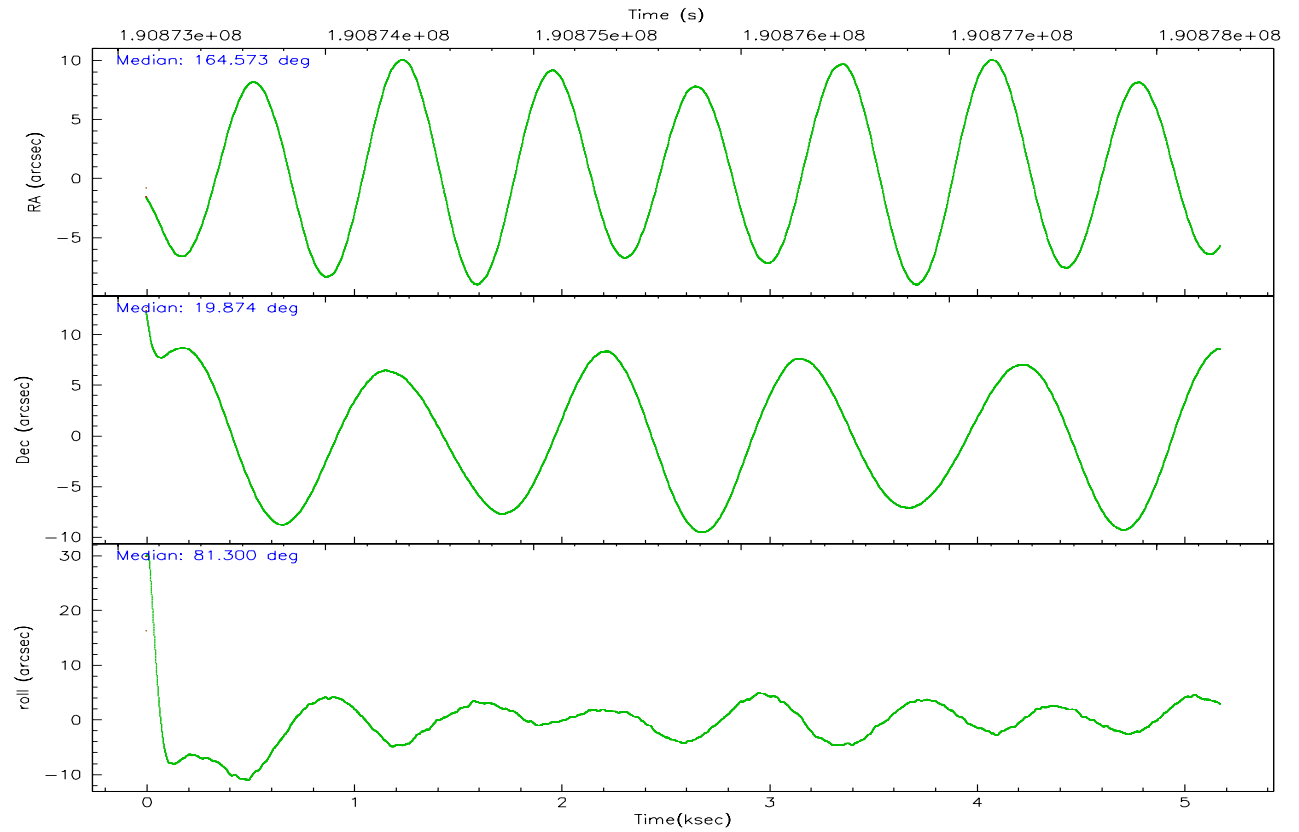
	ccd 7
grade 0 events	562
	6%
grade 1 events	6
	0%
grade 2 events	868
	10%
grade 3 events	468
	5%
grade 4 events	493
	5%
grade 5 events	549
	6%
grade 6 events	1867
	22%
grade 7 events	3418
	41%

2.2 Compared Parameters

Parameter	Planned	Actual	Parameter	Planned	Actual
Instrument	ACIS	ACIS	Obspar format version number	6	6
Detector	ACIS-7	ACIS-7	Obspar file type	PREDICTED	ACTUAL
Grating	NONE	NONE	Obspar update status	NONE	UPDATED
Data mode	FAINT	FAINT	On-chip summing requested	N	N
Observation mode	POINTING	POINTING	Subarray requested	CUSTOM	1/8
Pointing RA	164.584400	164.5734078130427	Subarray start row	1	1
Pointing Dec	19.848705	19.87401115963992	Subarray row count	128	128
Pointing Roll	81.144543	81.30502371576318	Alternating exposures requested	N	N
SIM focus pos (mm)	-0.684267	-0.6828225247311905	Primary exposure time	0.000000	0.4
SIM defocus (mm)	0	0.001444936568705701			
SIM translation stage pos (mm)	-178.632523	-178.6370735452349			
SIM translation stage offset (mm)	-11.5	-11.49544903777291			
Observation start time	190873306.184000	190871996.59131			
Observation start date	2004-01-19T04:20:42	2004-01-19T03:59:56			
Observation end time	190878306.184000	190879026.55411			
Observation end date	2004-01-19T05:44:02	2004-01-19T05:57:06			
Read mode	TIMED	TIMED			

2.3 Aspect



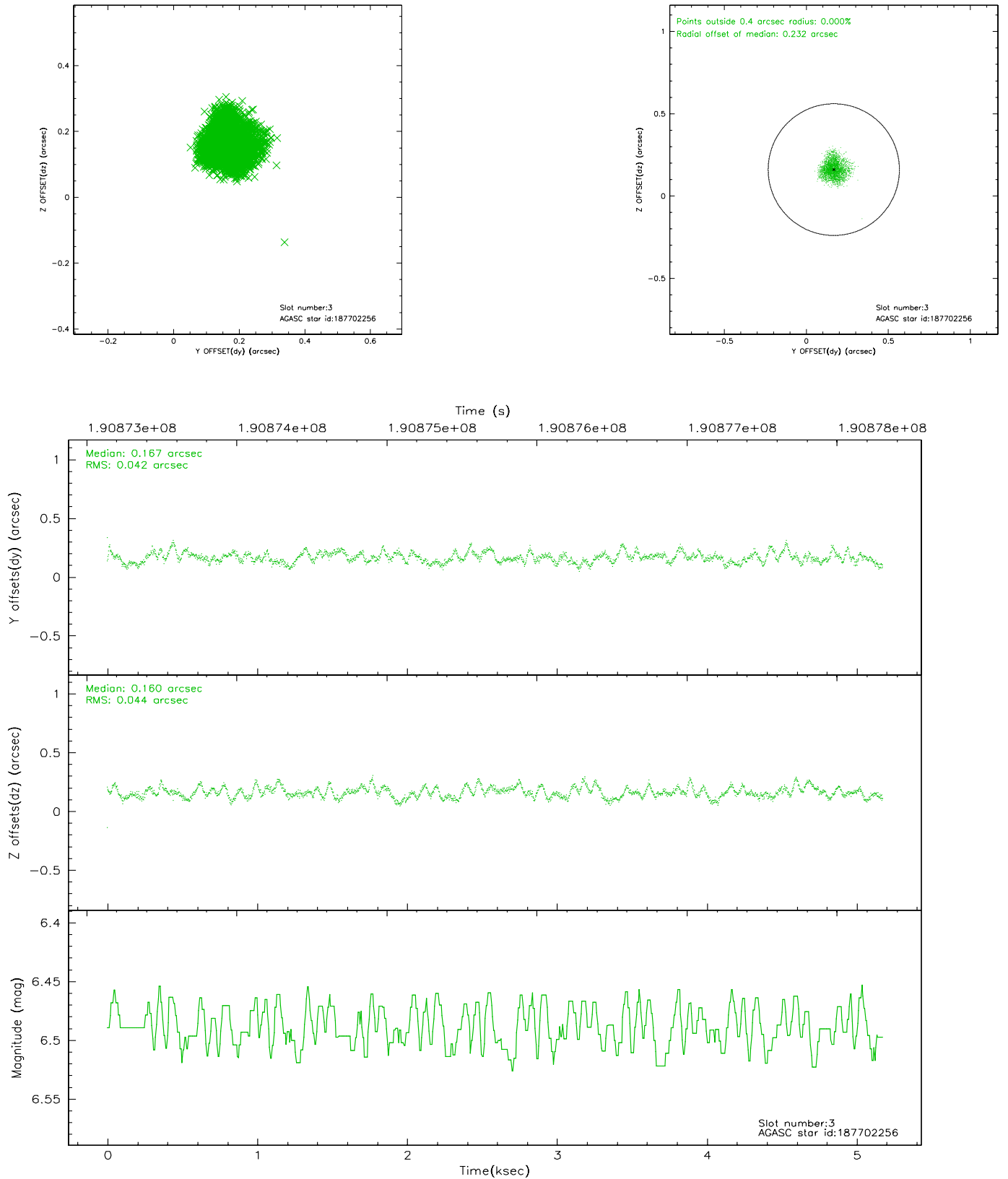


Slot Statistics

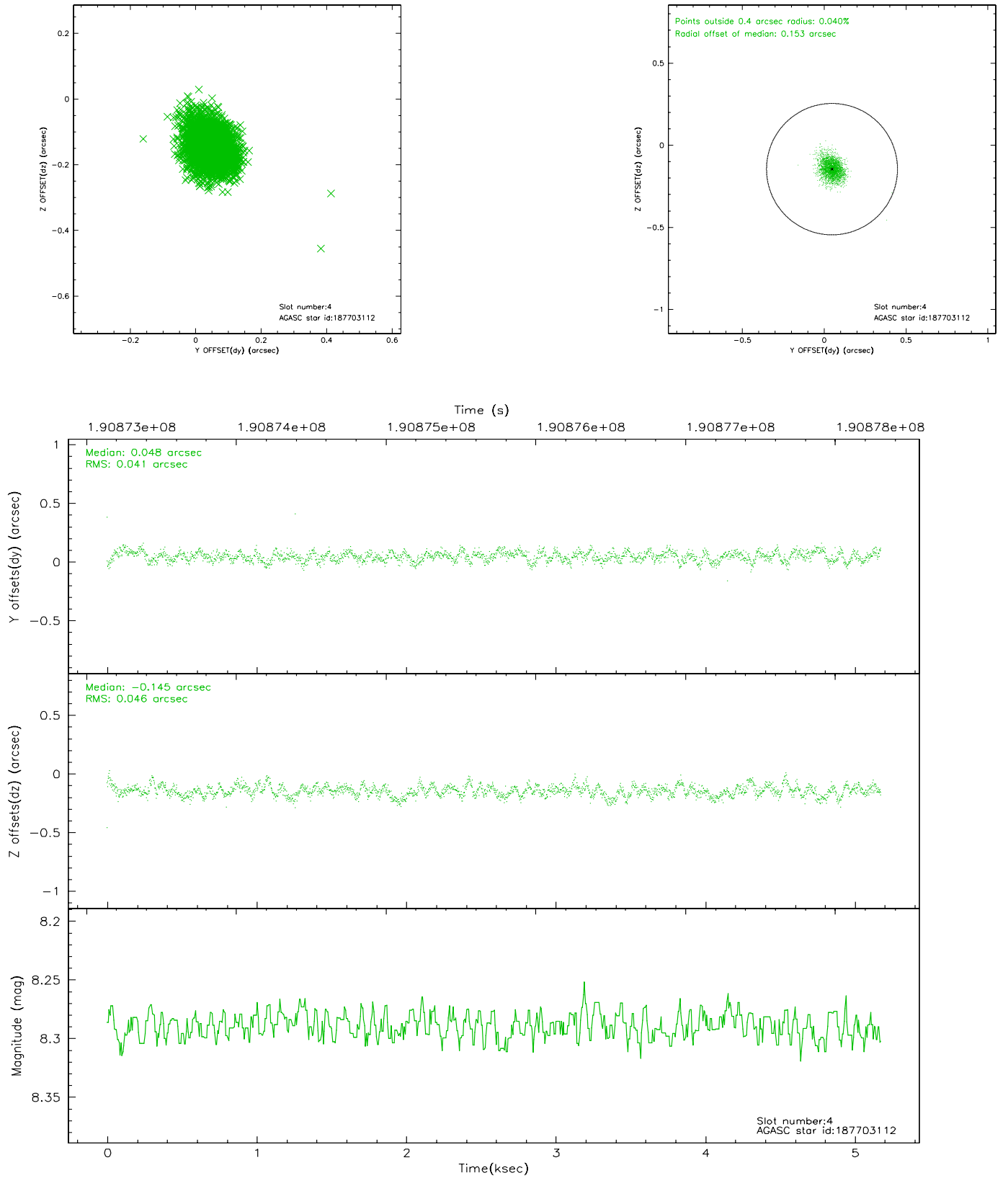
slot	status	id	mag	n_pts	med_dy	med_dz	dr1	dr2	ra	dec	mean_y	mean_z
0	FID	ACIS-S-1	7.19	1263	0.084	0.114	0.006	0.010	0.000000	0.000000	936.36	-1962.37
1	FID	ACIS-S-5	7.23	1263	-0.046	0.123	0.005	0.008	0.000000	0.000000	-1812.01	-66.07
2	FID	ACIS-S-6	7.42	1263	-0.059	-0.226	0.006	0.011	0.000000	0.000000	400.64	578.75
3	GUIDE	187702256	6.49	2526	0.167	0.160	0.067	0.102	164.656317	19.622049	-768.73	-366.81
4	GUIDE	187703112	8.29	2525	0.048	-0.145	0.064	0.106	164.028729	19.725386	-726.22	1792.03
5	GUIDE	187703696	9.21	2526	-0.124	0.052	0.083	0.133	164.962025	19.745886	-167.89	-1320.53
6	GUIDE	188089528	9.77	2525	-0.034	0.071	0.107	0.175	164.059332	20.062917	490.90	1872.85
7	GUIDE	187695976	9.44	2524	-0.055	-0.142	0.132	0.199	163.910513	19.999804	190.72	2337.41

2.4 Star Slots

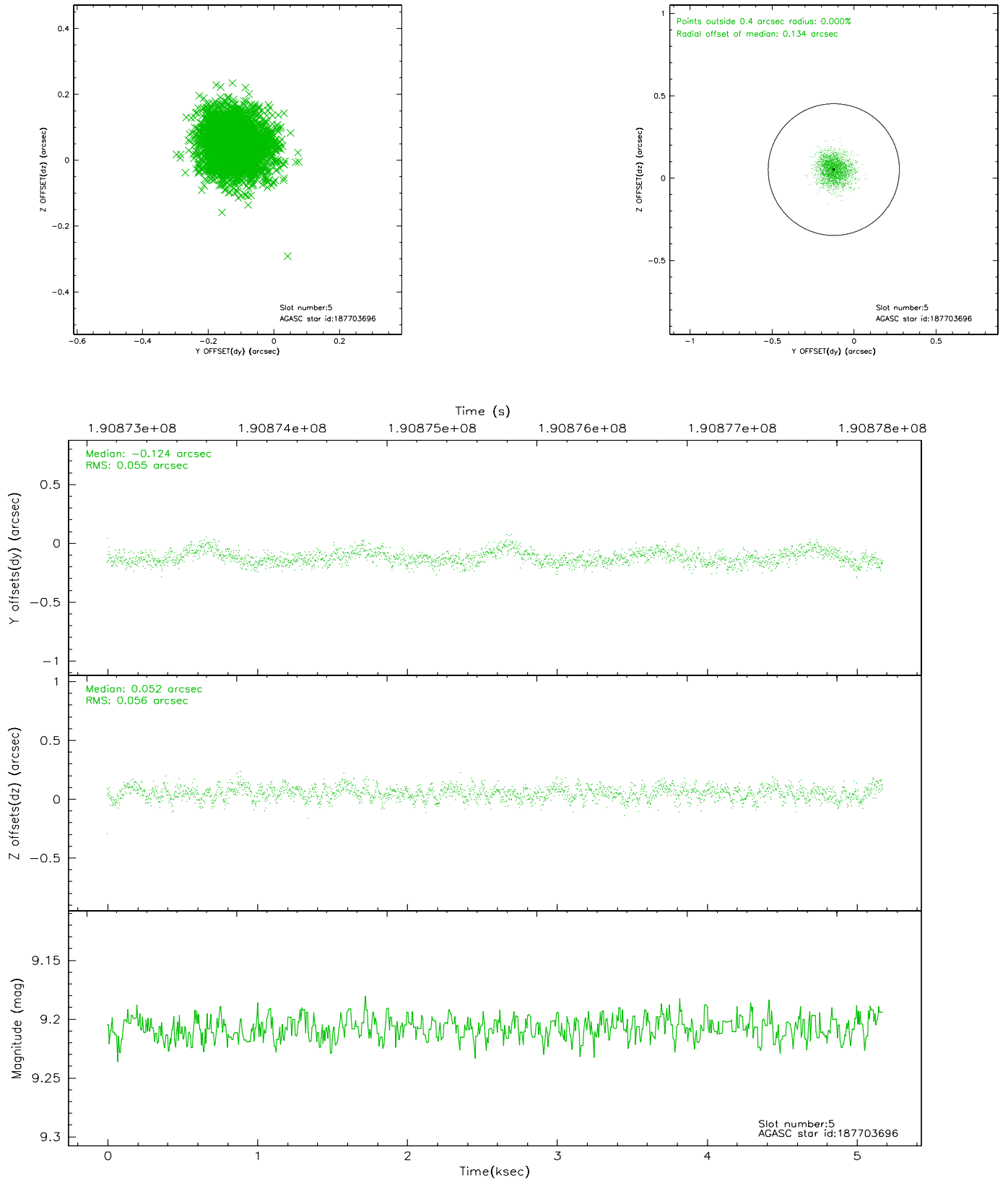
2.4.1 Slot 3



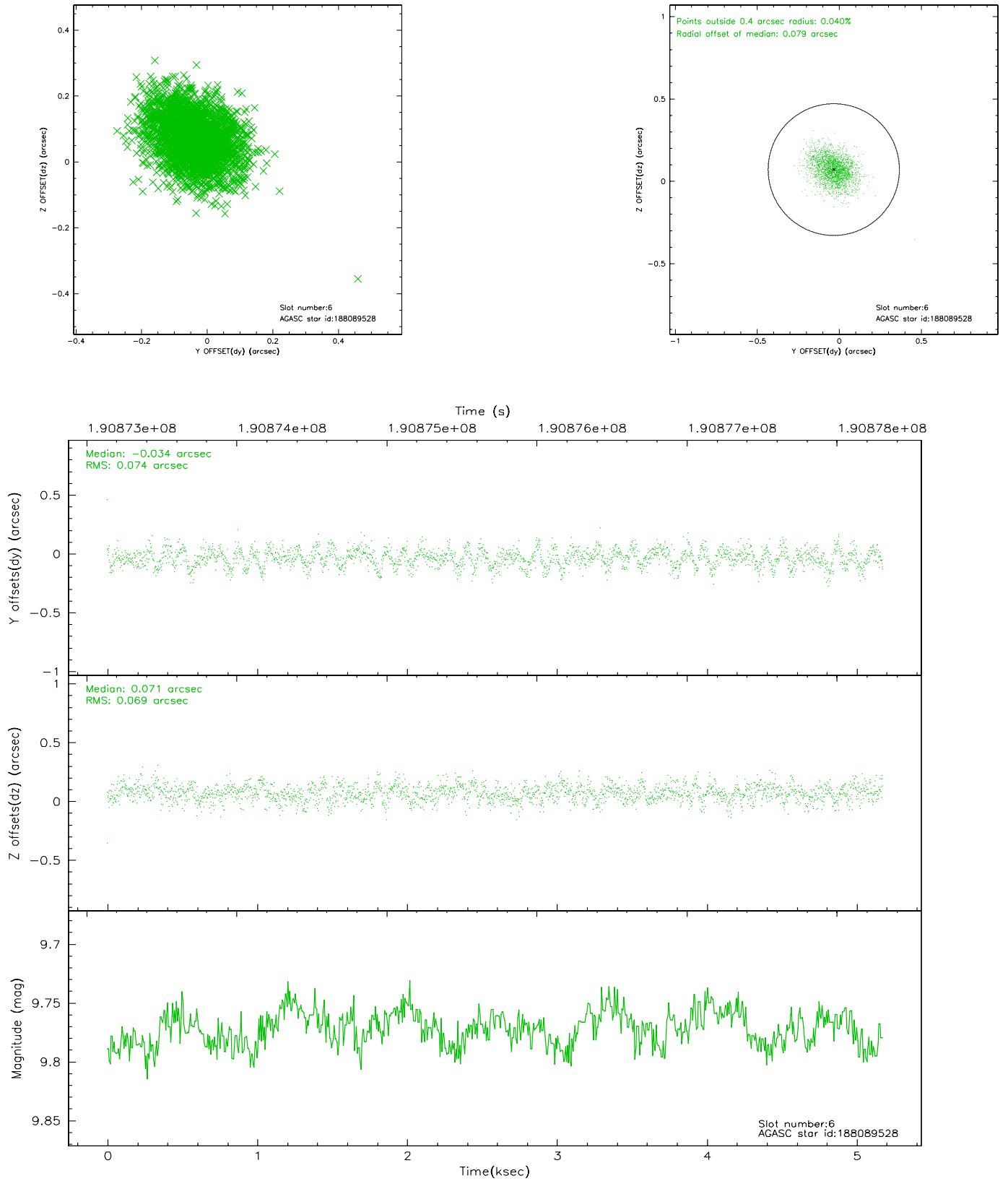
2.4.2 Slot 4



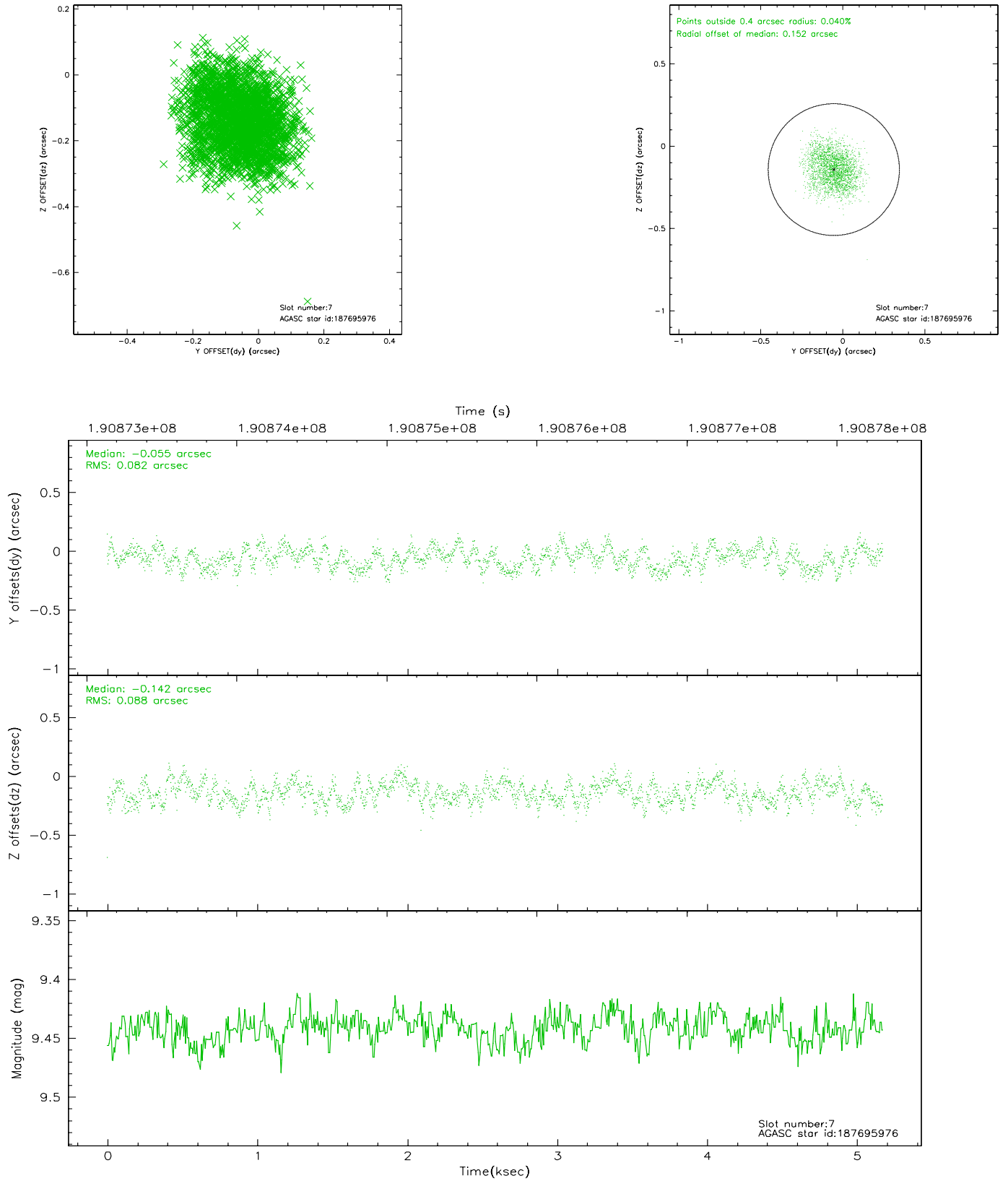
2.4.3 Slot 5



2.4.4 Slot 6

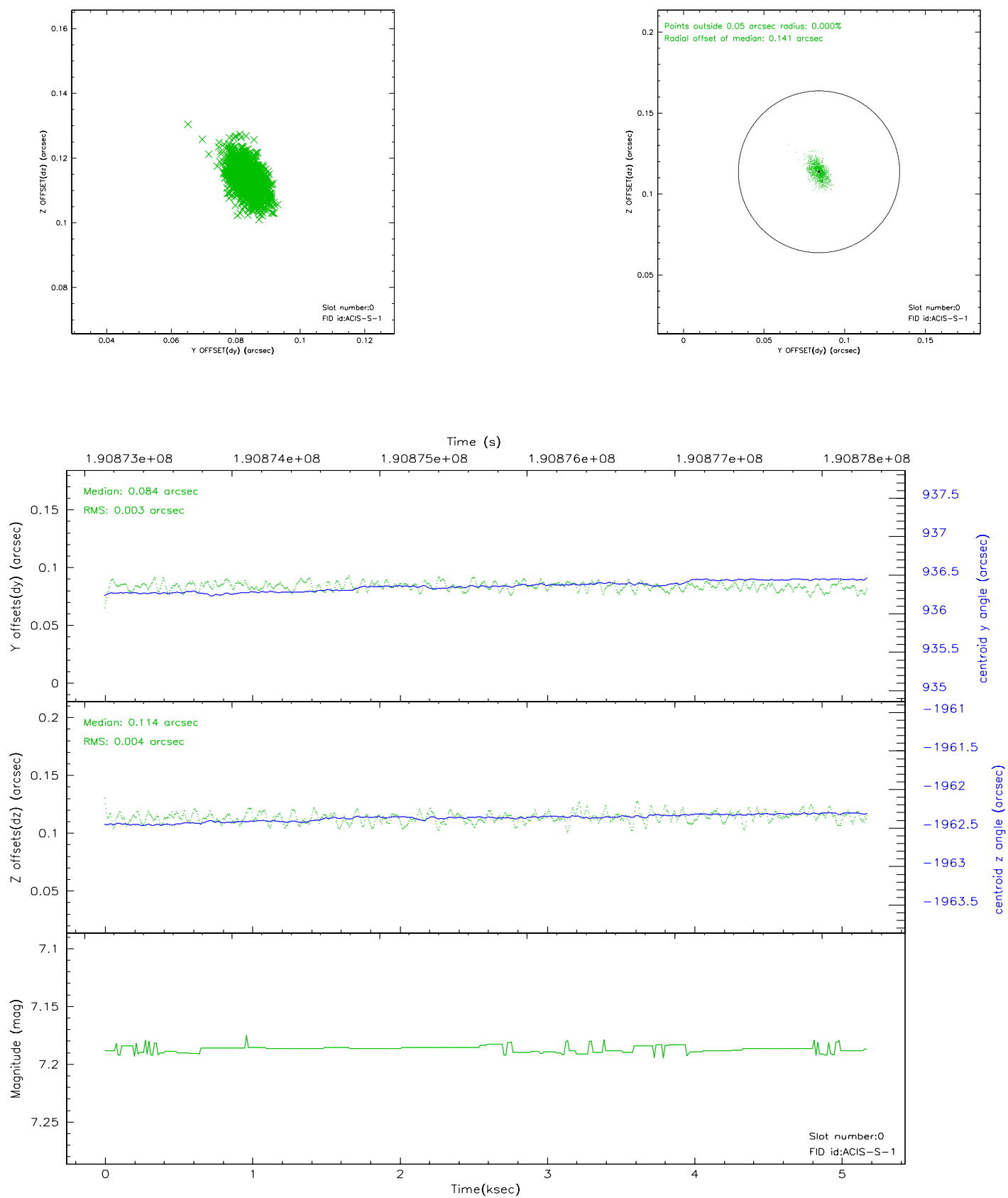


2.4.5 Slot 7

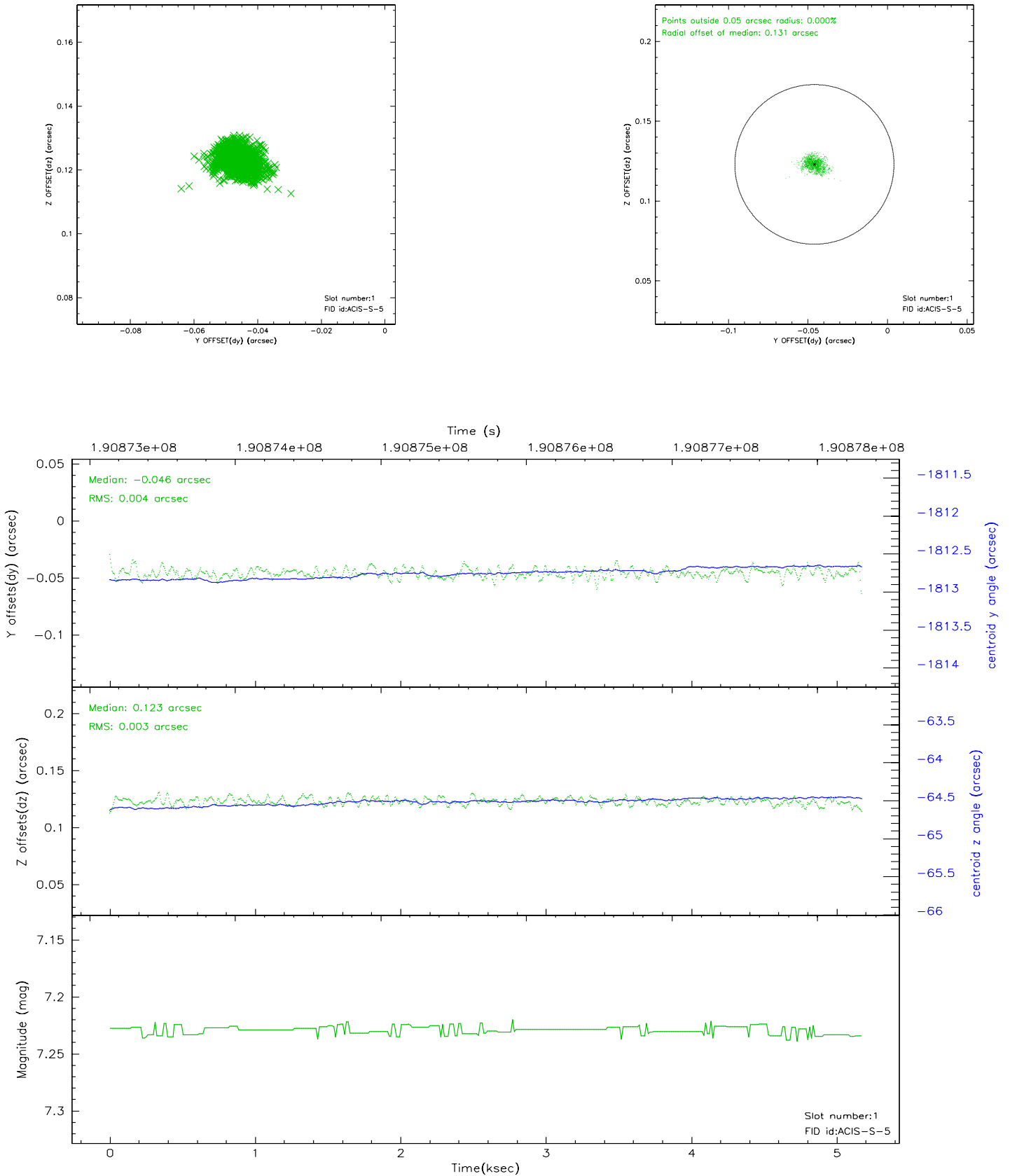


2.5 FID Slots

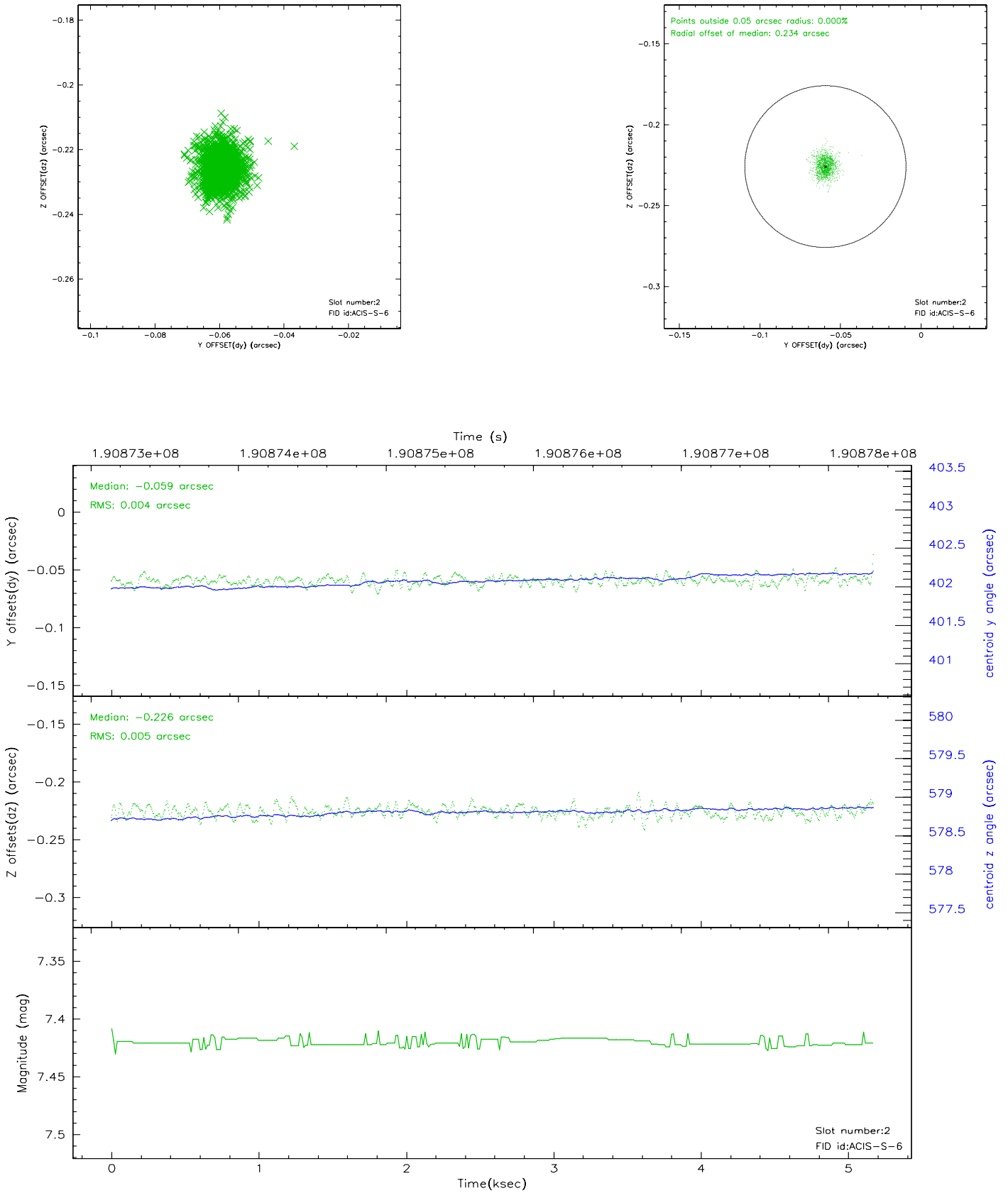
2.5.1 Slot 0



2.5.2 Slot 1



2.5.3 Slot 2



3 Point Sources

A Summary

A.1 Status

V&V Scientist	Beth Sundheim
V&V Date (YYYY-MM-DD)	2006.06.07
V&V Edition	1
V&V Disposition and Status	OK
V&V Charge Time	5.175

A.2 Comments