

V&V Reference Report

L2 ASCDS Version : 7.6.7.1

Observation 4884 - L2 Version 002
Chandra X-Ray Center

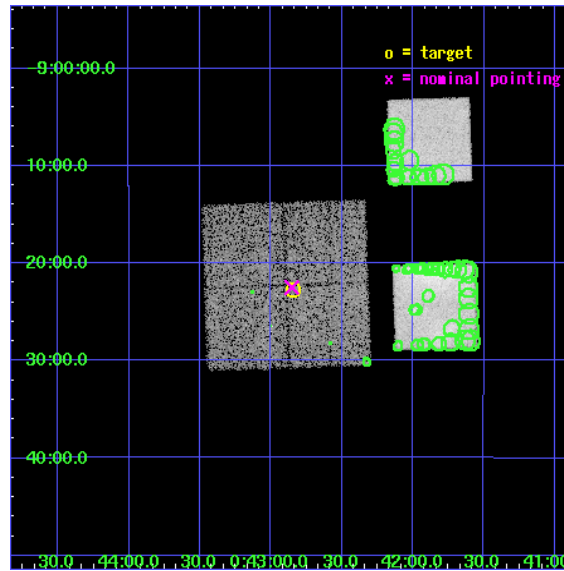
L2 Processing Date : Apr 24 2006

Contents

1	Front	2
2	OBI	3
2.1	OBI	3
2.1.1	Images	3
2.1.2	Bias	3
2.1.3	Parameters	4
2.1.4	Events	4
2.2	Compared Parameters	5
2.3	Aspect	6
2.4	Star Slots	9
2.4.1	Slot 3	9
2.4.2	Slot 4	10
2.4.3	Slot 5	11
2.4.4	Slot 6	12
2.4.5	Slot 7	13
2.5	FID Slots	14
2.5.1	Slot 0	14
2.5.2	Slot 1	15
3	Point Sources	16
A	Summary	17
A.1	Status	17
A.2	Comments	17

1 Front

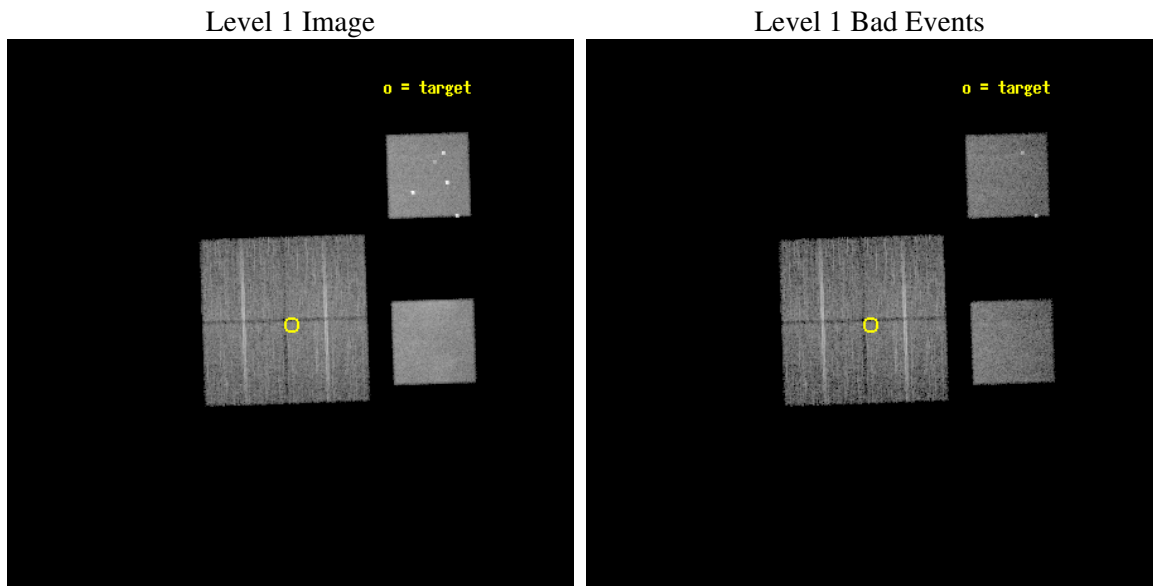
seq_num	700966
obs_id	4884
title	AGN in low-redshift Clusters of Galaxies
observer	Prof. Paul Martini
object	Abell85-P4
dtcycle	0
cycle	P
ra_targ	10.71125
dec_targ	-9.379167
ra_nom	10.713174592633
dec_nom	-9.3749923944058
roll_nom	88.118830616217
revision	4
ontime	9756.7999636531
livetime	9633.2534876737
ontime0	9756.7999636531
ontime1	9756.7999636531
ontime2	9756.7999636531
ontime3	9756.7999636531
ontime5	9756.7999636531
ontime7	9756.7999636531
l2events	138022



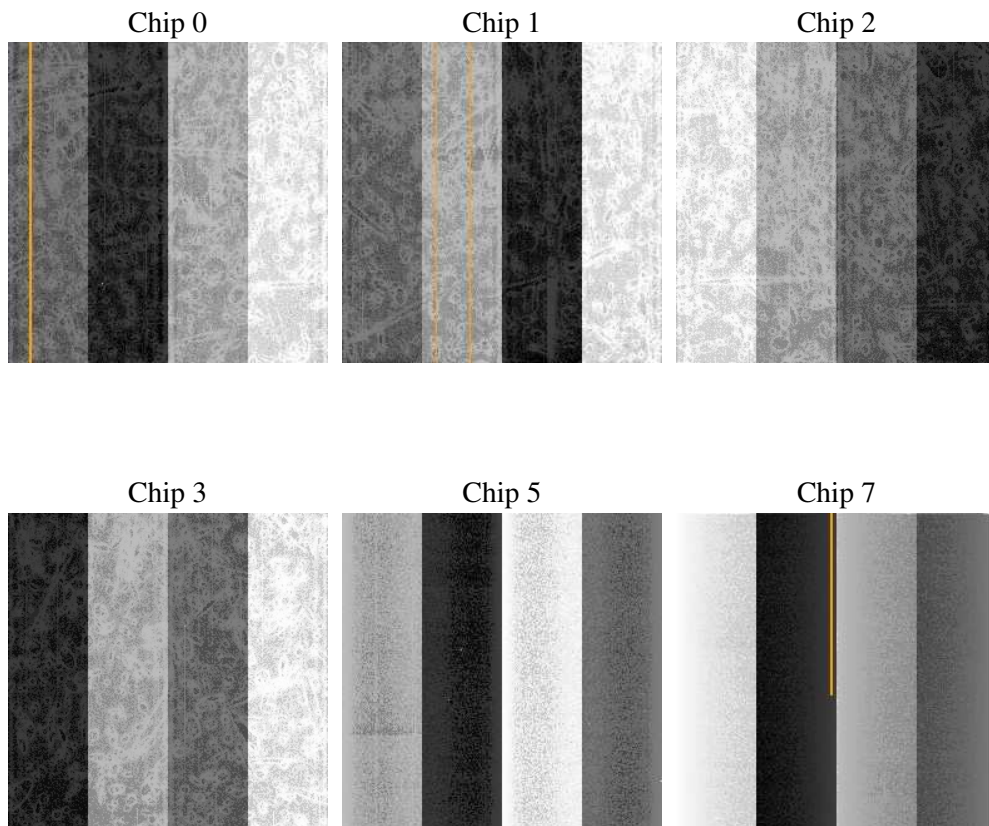
2 OBI

2.1 OBI

2.1.1 Images



2.1.2 Bias



2.1.3 Parameters

obi_num	1
ascdsver	7.6.7.1
caldbver	3.2.1
date	2006-04-24T18:53:14
revision	4

sched_exp_time	10000.000000
ontime	9761.9280749559
ontime0	9761.9280749559
ontime1	9765.1691348553
ontime2	9761.9280948639
ontime3	9761.9280749559
ontime5	9761.9280948639
ontime7	9761.9280948639
l1events	523540

2.1.4 Events

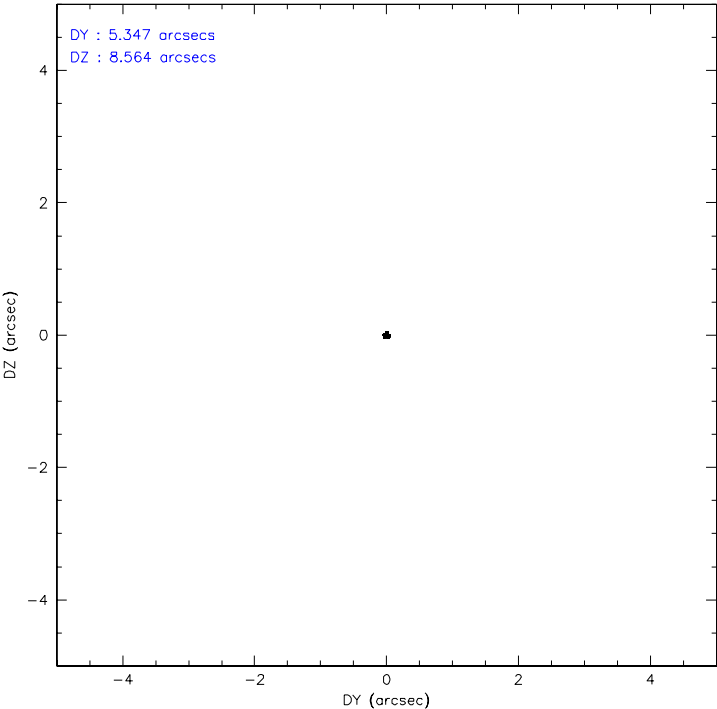
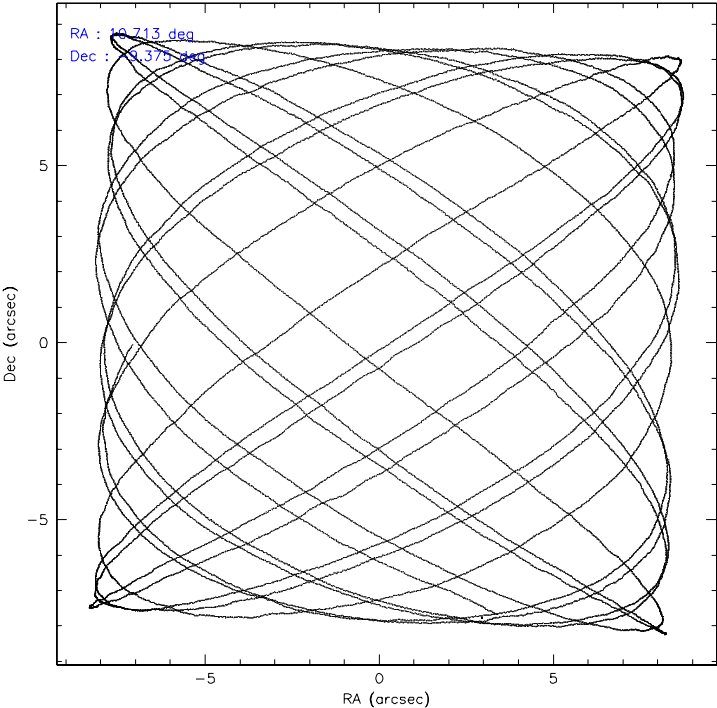
	ccd 0	ccd 1	ccd 2	ccd 3	ccd 5	ccd 7
level 1 events	71754	66803	75013	71838	116996	121136
rejected events	62731	57162	65237	62230	61102	61306
rejected %	87%	85%	86%	86%	52%	50%

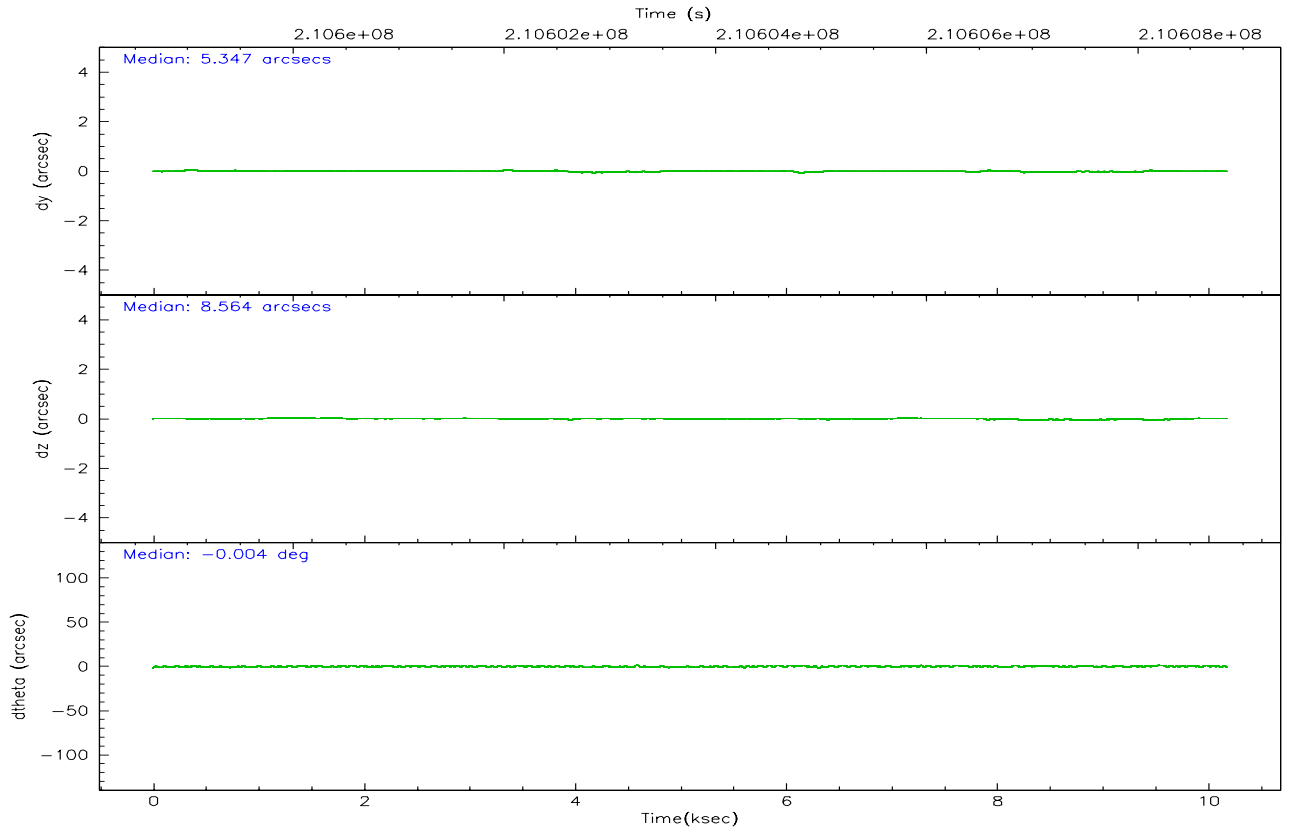
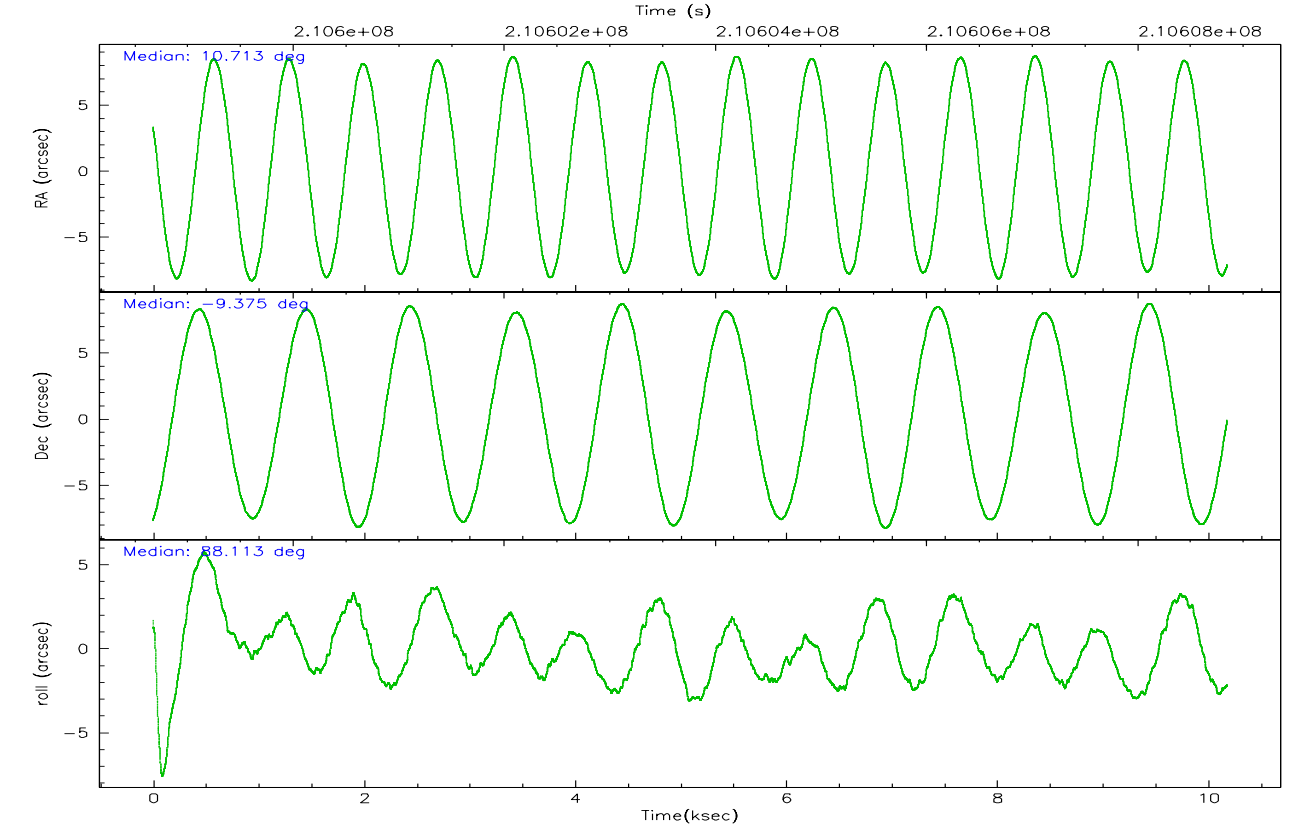
	ccd 0	ccd 1	ccd 2	ccd 3	ccd 5	ccd 7
grade 0 events	3801	3988	4648	4660	9574	7945
	5%	5%	6%	6%	8%	6%
grade 1 events	44	42	54	40	246	76
	0%	0%	0%	0%	0%	0%
grade 2 events	1986	1956	1934	1752	15894	15683
	2%	2%	2%	2%	13%	12%
grade 3 events	893	998	838	853	1319	4357
	1%	1%	1%	1%	1%	3%
grade 4 events	783	872	871	860	1194	4214
	1%	1%	1%	1%	1%	3%
grade 5 events	2987	3002	2824	3272	5378	6568
	4%	4%	3%	4%	4%	5%
grade 6 events	1569	1839	1486	1489	27956	27677
	2%	2%	1%	2%	23%	22%
grade 7 events	59691	54106	62358	58912	55435	54616
	83%	80%	83%	82%	47%	45%

2.2 Compared Parameters

Parameter	Planned	Actual	Parameter	Planned	Actual
Instrument	ACIS	ACIS	Obspar format version number	6	6
Detector	ACIS-012357	ACIS-012357	Obspar file type	PREDICTED	ACTUAL
Grating	NONE	NONE	Obspar update status	NONE	UPDATED
Data mode	VFAINT	VFAINT	On-chip summing requested	N	N
Observation mode	POINTING	POINTING	Subarray requested	NONE	NONE
Pointing RA	10.726405	10.71317459263346	Alternating exposures requested	N	N
Pointing Dec	-9.399051	-9.374992394405794	Primary exposure time	0.000000	3.2
Pointing Roll	87.912302	88.11883061621671			
SIM focus pos (mm)	-0.782348	-0.7809083437167272			
SIM defocus (mm)	0	0.001439871863259334			
SIM translation stage pos (mm)	-233.592463	-233.5874344608287			
SIM translation stage offset (mm)	0	-0.005018542100998502			
Observation start time	210598846.184000	210598470.96161			
Observation start date	2004-09-03T11:39:42	2004-09-03T11:34:30			
Observation end time	210608846.184000	210608981.31208			
Observation end date	2004-09-03T14:26:22	2004-09-03T14:29:41			
Read mode	TIMED	TIMED			

2.3 Aspect



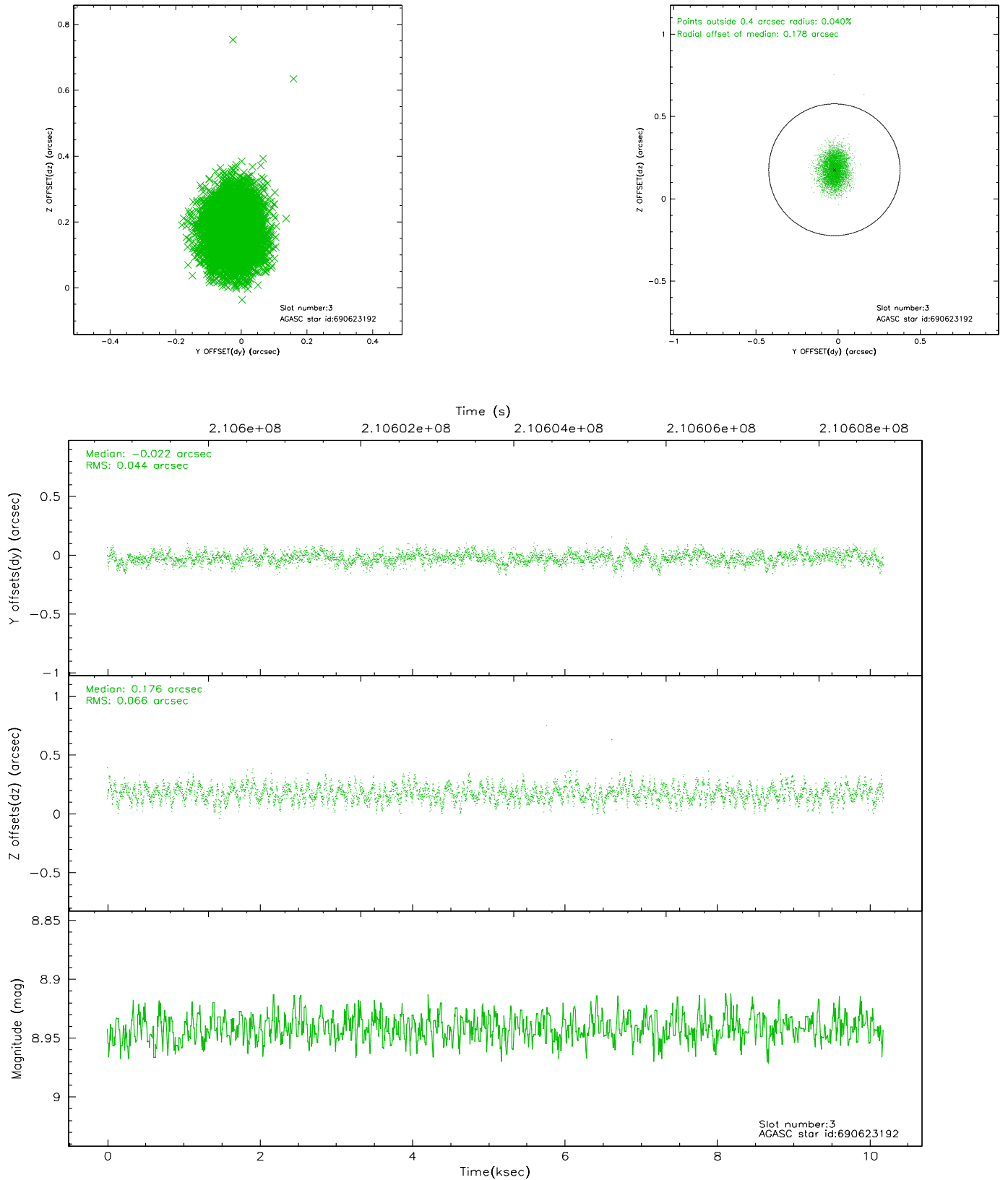


Slot Statistics

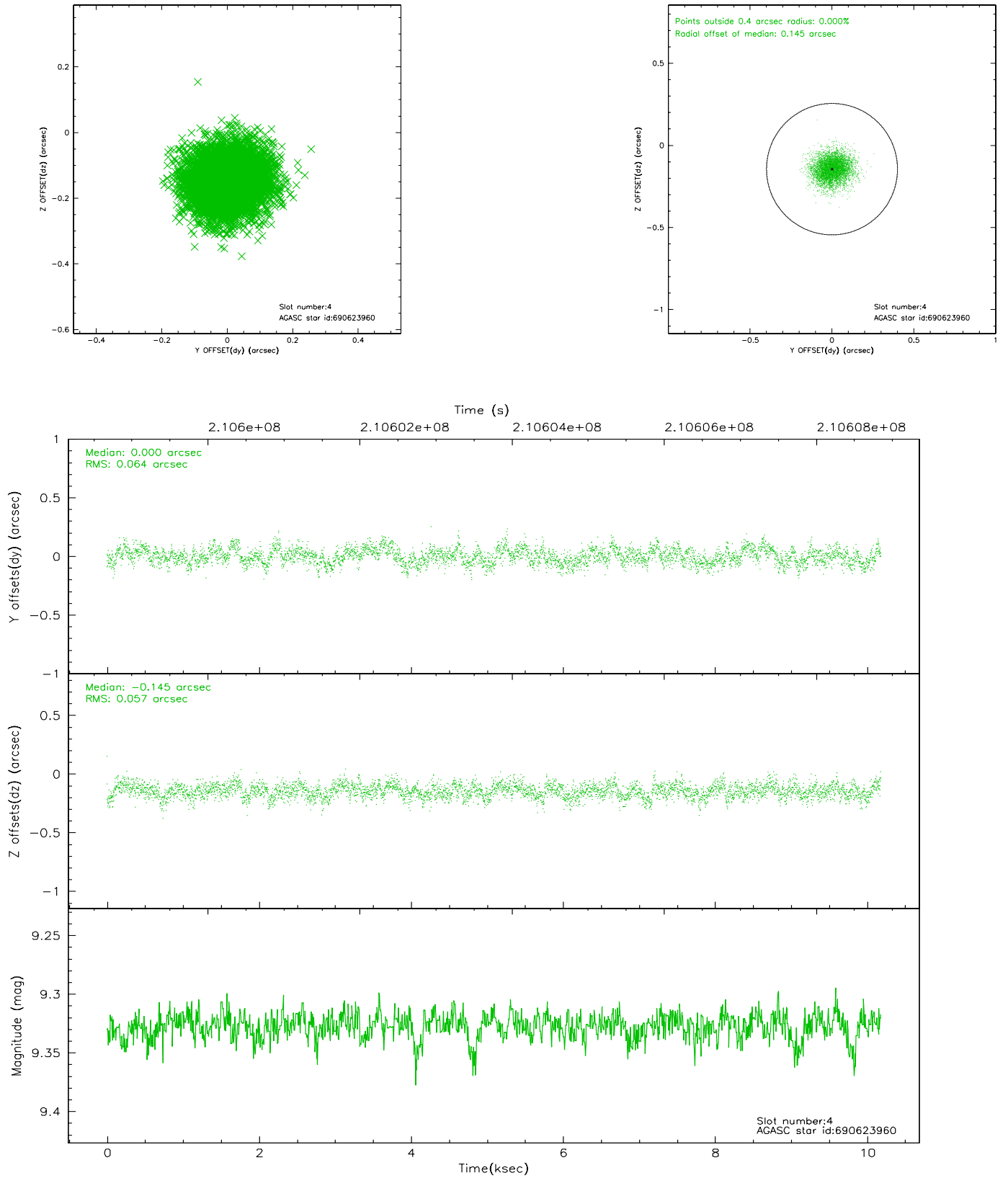
slot	status	id	mag	n_pts	med_dy	med_dz	dr1	dr2	ra	dec	mean_y	mean_z
0	FID	ACIS-I-1	7.24	2484	0.007	-0.001	0.004	0.008	0.000000	0.000000	934.42	-831.97
1	FID	ACIS-I-5	7.23	2484	-0.068	0.051	0.004	0.008	0.000000	0.000000	-1813.54	1065.22
2	OMITTED		0.00	0	0.000	0.000	0.000	0.000	0.000000	0.000000	0.00	0.00
3	GUIDE	690623192	8.94	4966	-0.022	0.176	0.085	0.137	11.363175	-9.544394	-441.98	-2278.38
4	GUIDE	690623960	9.33	4967	0.000	-0.145	0.092	0.148	10.570675	-9.168103	810.79	583.03
5	GUIDE	690625160	8.90	4967	0.028	-0.117	0.098	0.157	10.224219	-9.960066	-2084.22	1705.73
6	GUIDE	690625776	9.14	4965	-0.008	0.108	0.085	0.145	10.846019	-9.315741	315.35	-414.70
7	GUIDE	690632656	9.26	4964	0.001	-0.027	0.084	0.134	10.397747	-9.674983	-1035.61	1129.25

2.4 Star Slots

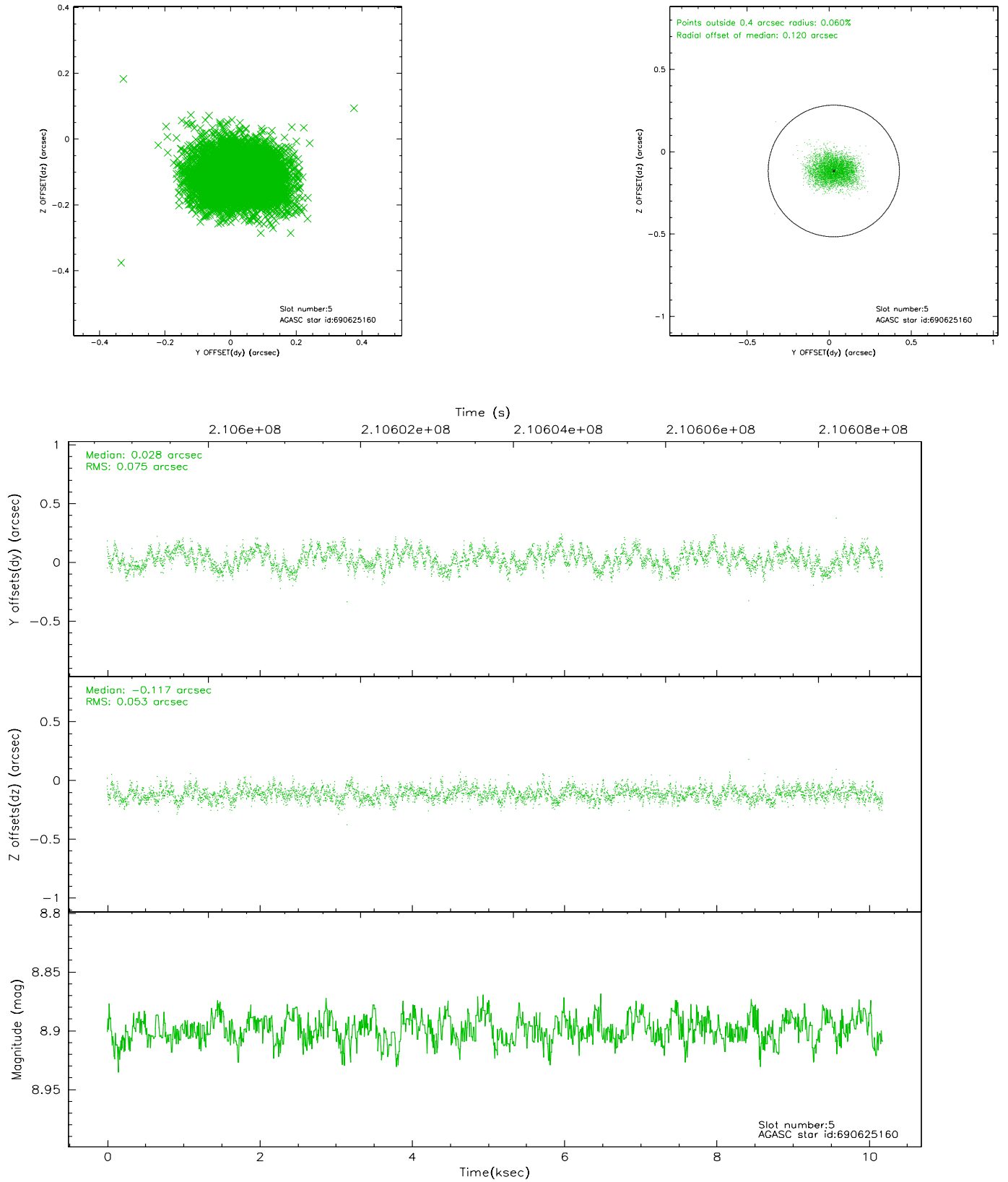
2.4.1 Slot 3



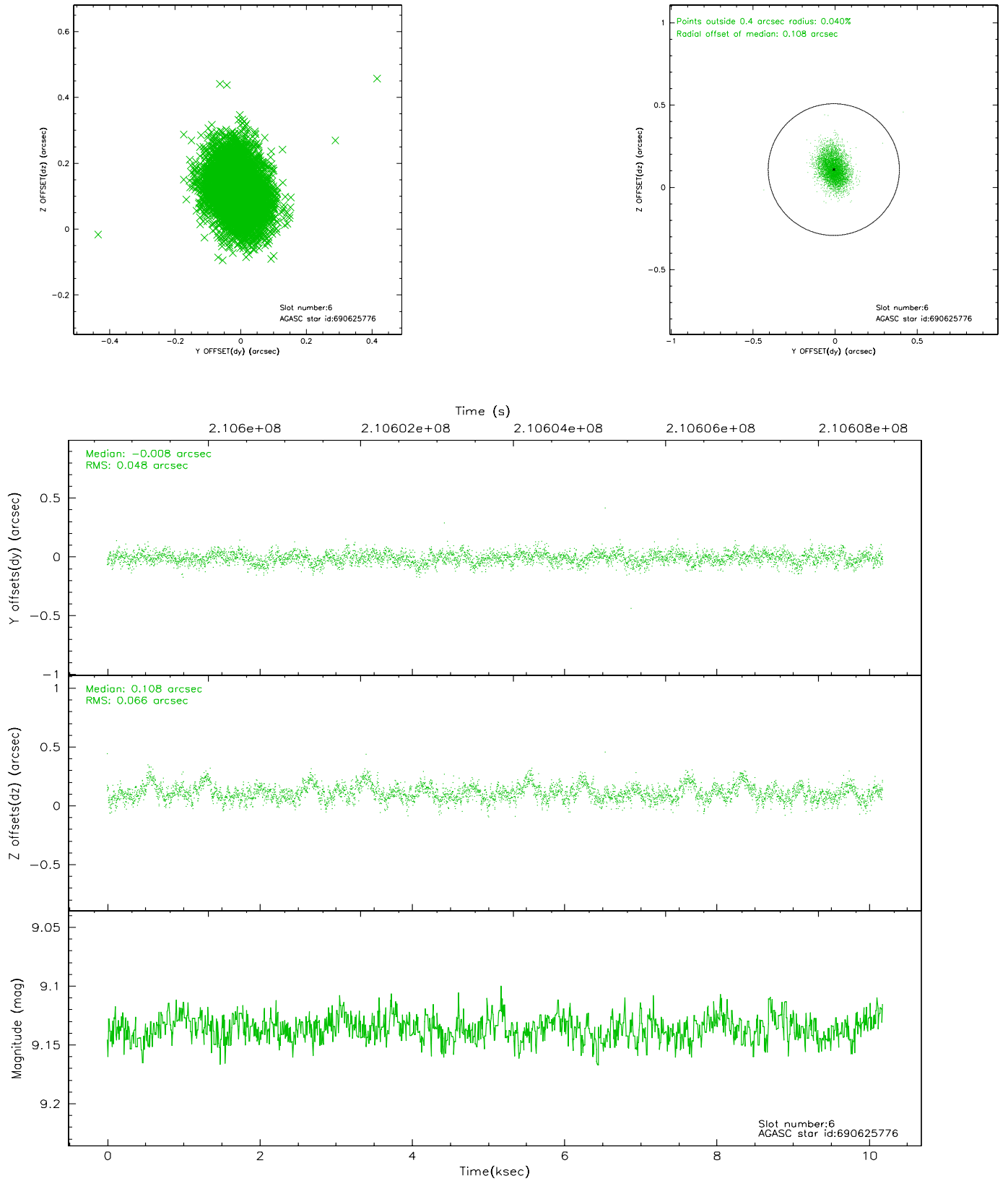
2.4.2 Slot 4



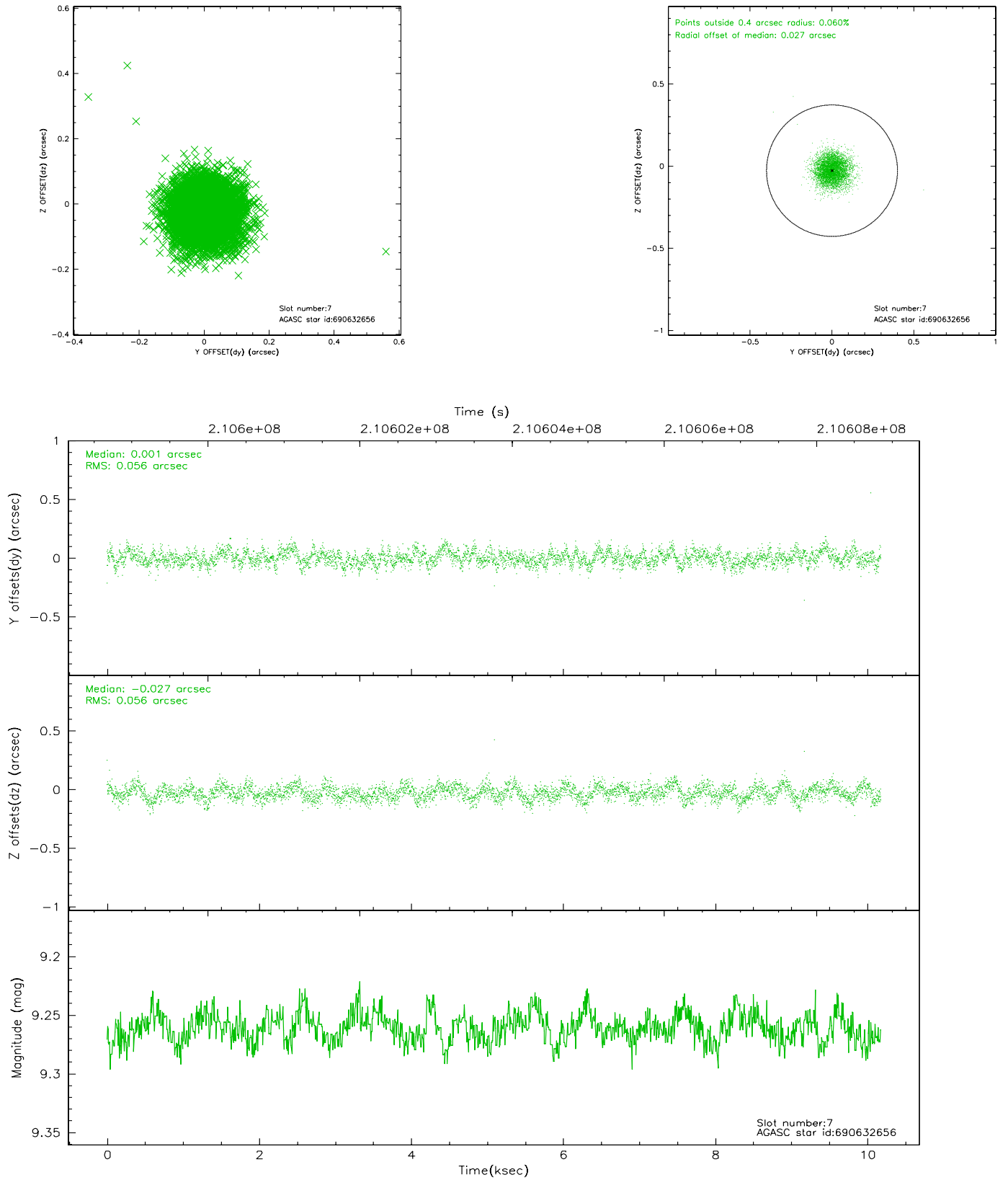
2.4.3 Slot 5



2.4.4 Slot 6

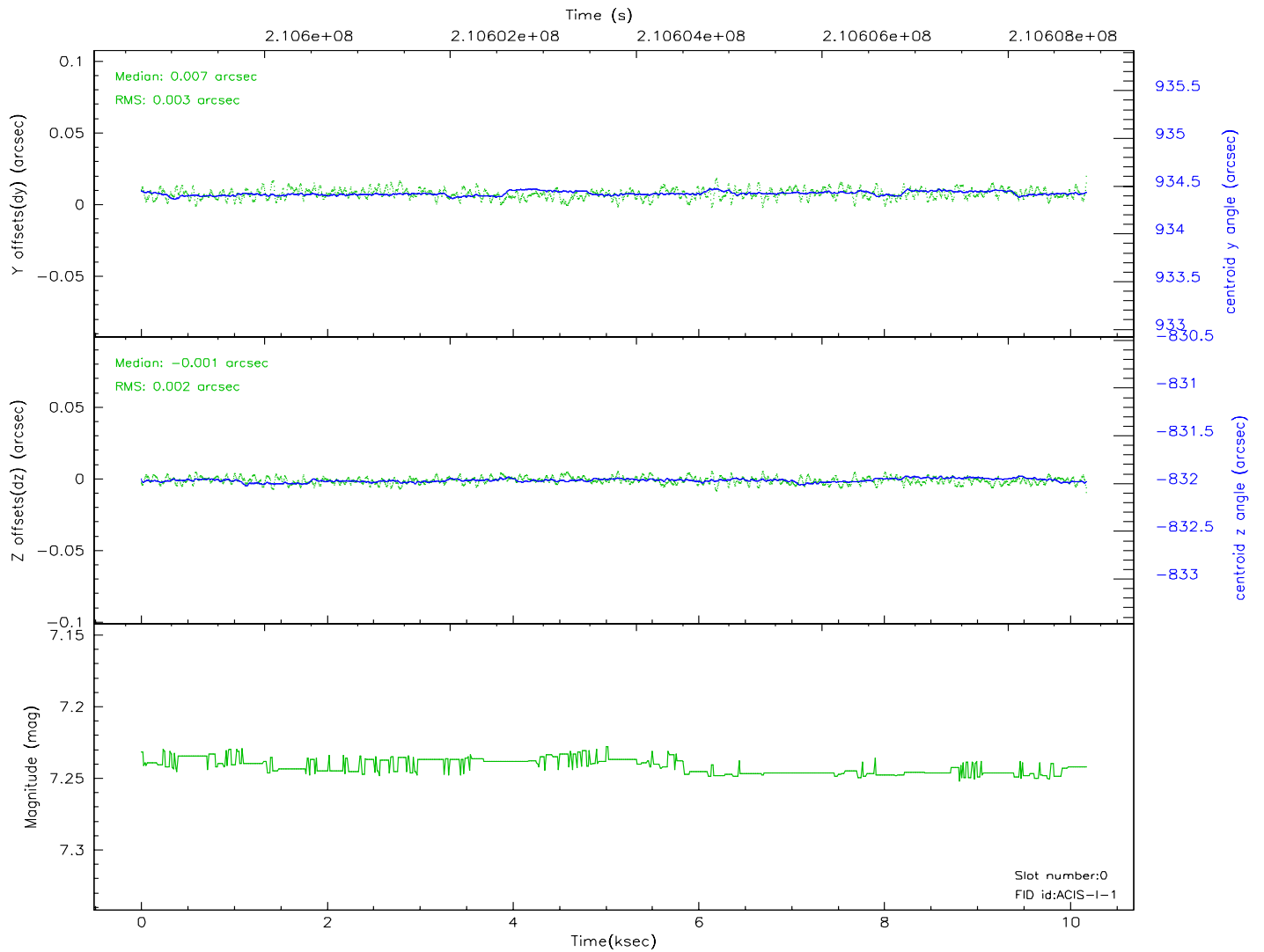
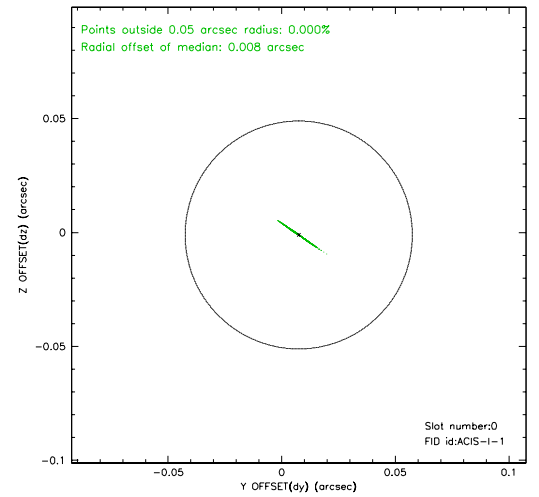
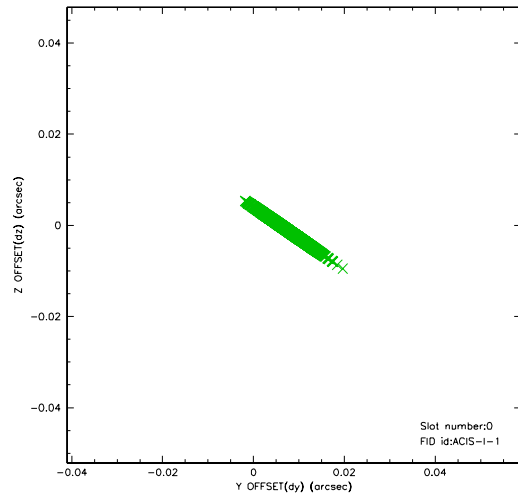


2.4.5 Slot 7

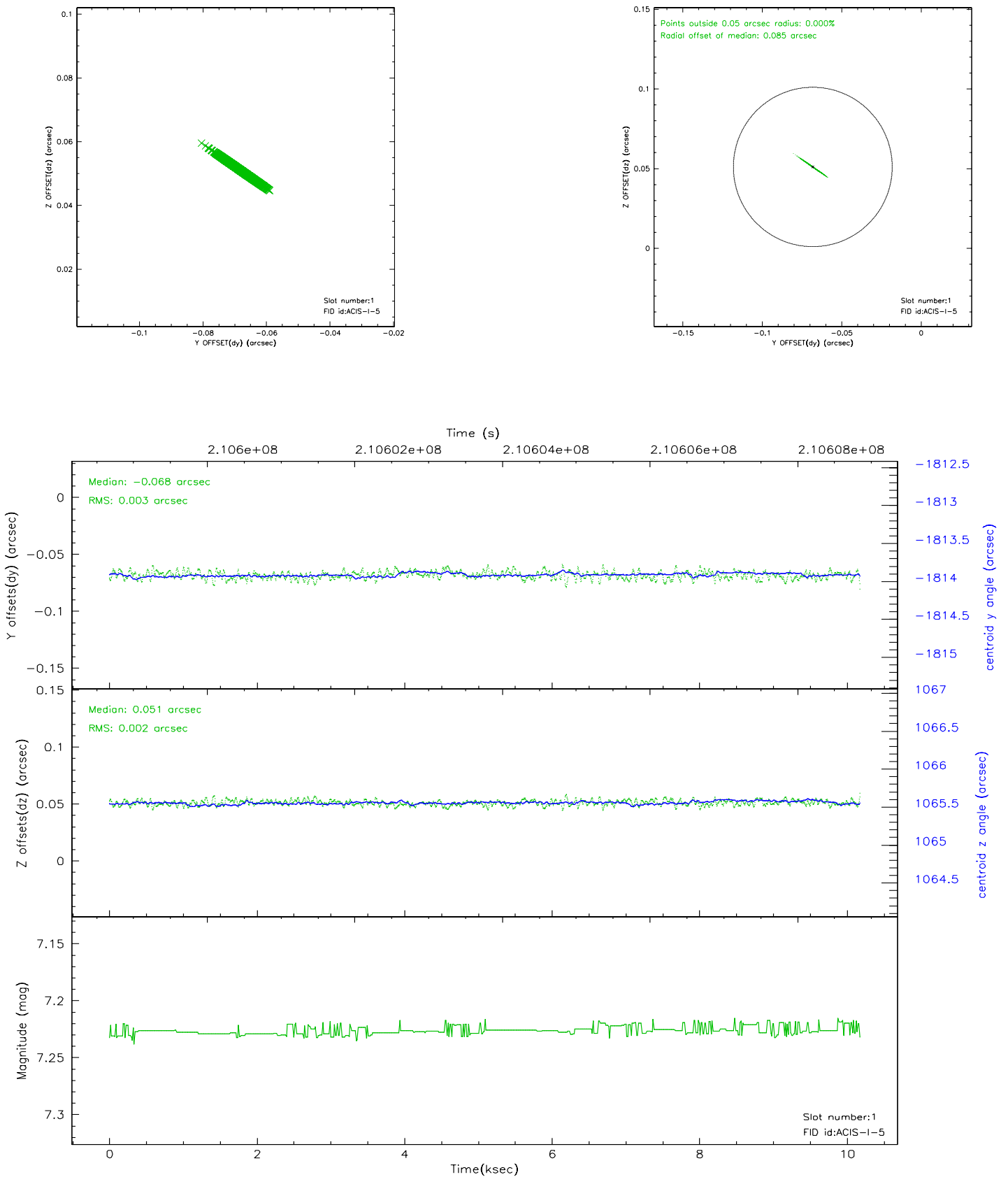


2.5 FID Slots

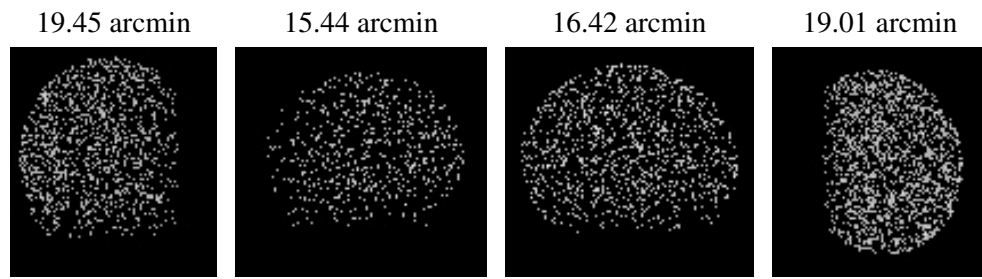
2.5.1 Slot 0



2.5.2 Slot 1



3 Point Sources



A Summary

A.1 Status

V&V Scientist	Beth Sundheim
V&V Date (YYYY-MM-DD)	2006.04.25
V&V Edition	1
V&V Disposition and Status	OK
V&V Charge Time	9.756

A.2 Comments