

V&V Reference Report

L2 ASCDS Version : 7.6.7.1

Observation 4881 - L2 Version 001
Chandra X-Ray Center

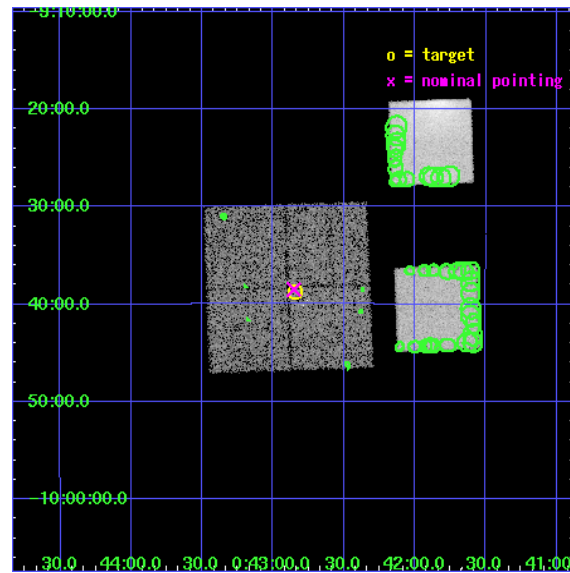
L2 Processing Date : Apr 19 2006

Contents

1	Front	2
2	OBI	3
2.1	OBI	3
2.1.1	Images	3
2.1.2	Bias	3
2.1.3	Parameters	4
2.1.4	Events	4
2.2	Compared Parameters	5
2.3	Aspect	6
2.4	Star Slots	9
2.4.1	Slot 3	9
2.4.2	Slot 4	10
2.4.3	Slot 5	11
2.4.4	Slot 6	12
2.4.5	Slot 7	13
2.5	FID Slots	14
2.5.1	Slot 0	14
2.5.2	Slot 1	15
2.5.3	Slot 2	16
3	Point Sources	17
A	Summary	18
A.1	Status	18
A.2	Comments	18

1 Front

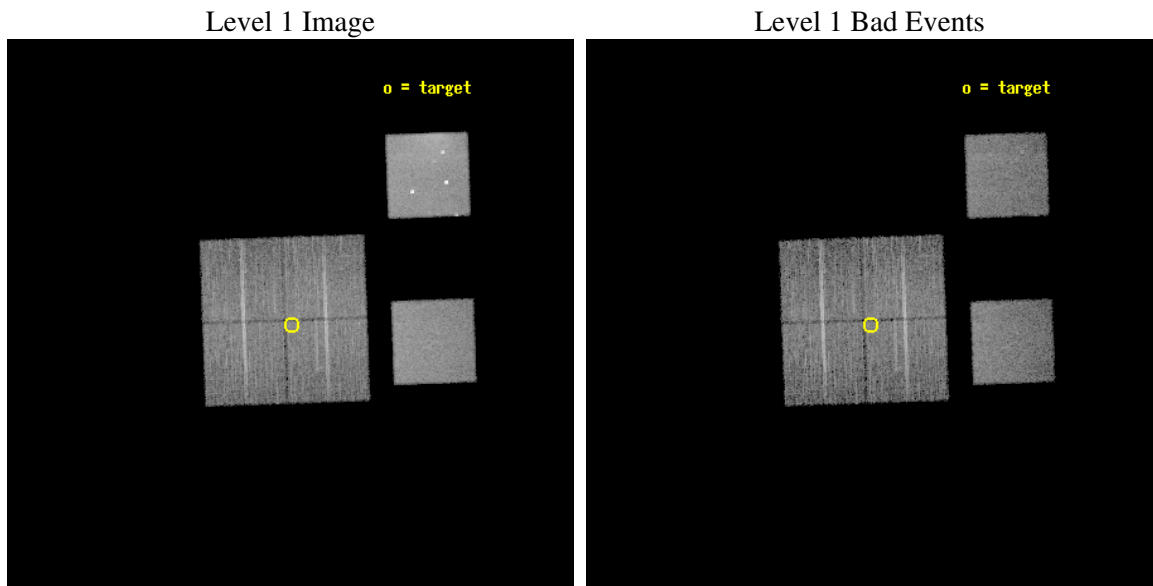
seq_num	700963
obs_id	4881
title	AGN in low-redshift Clusters of Galaxies
observer	Prof. Paul Martini
object	Abell85-P1
dtcycle	0
cycle	P
ra_targ	10.71125
dec_targ	-9.645833
ra_nom	10.713248136055
dec_nom	-9.6416258471624
roll_nom	87.9700892803
revision	3
ontime	9958.3999629021
livetime	9832.3007063432
ontime0	9958.3999629021
ontime1	9958.3764130473
ontime2	9958.3999629021
ontime3	9958.3999629021
ontime5	9958.3999629021
ontime7	9958.3999629021
l2events	139555



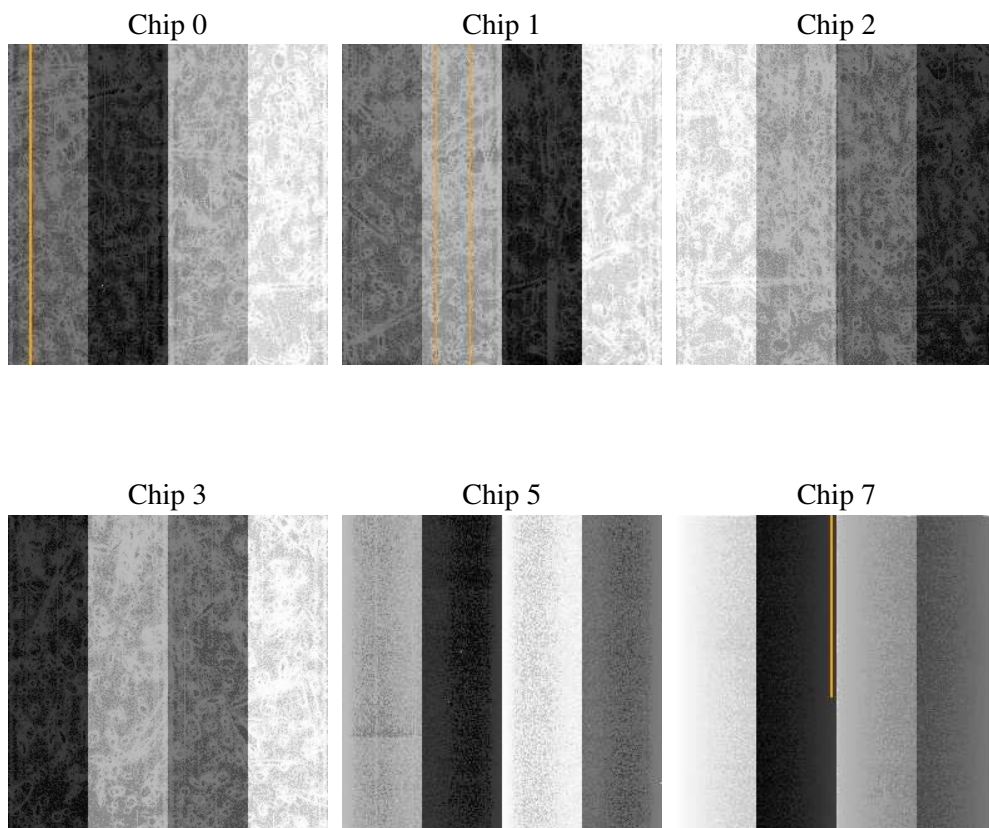
2 OBI

2.1 OBI

2.1.1 Images



2.1.2 Bias



2.1.3 Parameters

obi_num	1
ascdsver	7.6.7.1
caldbver	3.2.1
date	2006-04-19T07:55:43
revision	3

sched_exp_time	10000.000000
ontime	9962.8685241938
ontime0	9962.8685241938
ontime1	9962.8685241938
ontime2	9962.8685241938
ontime3	9962.8685241938
ontime5	9962.8685241938
ontime7	9962.8685241938
l1events	534027

2.1.4 Events

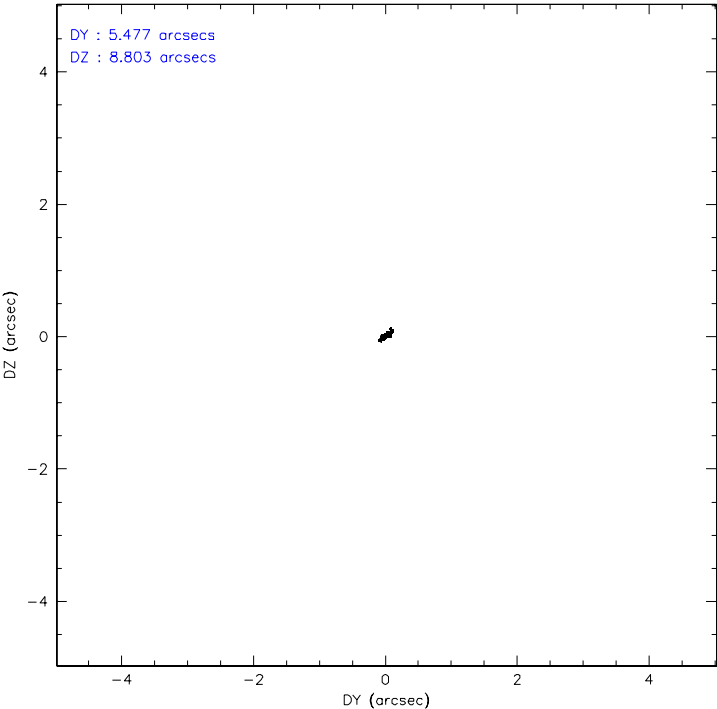
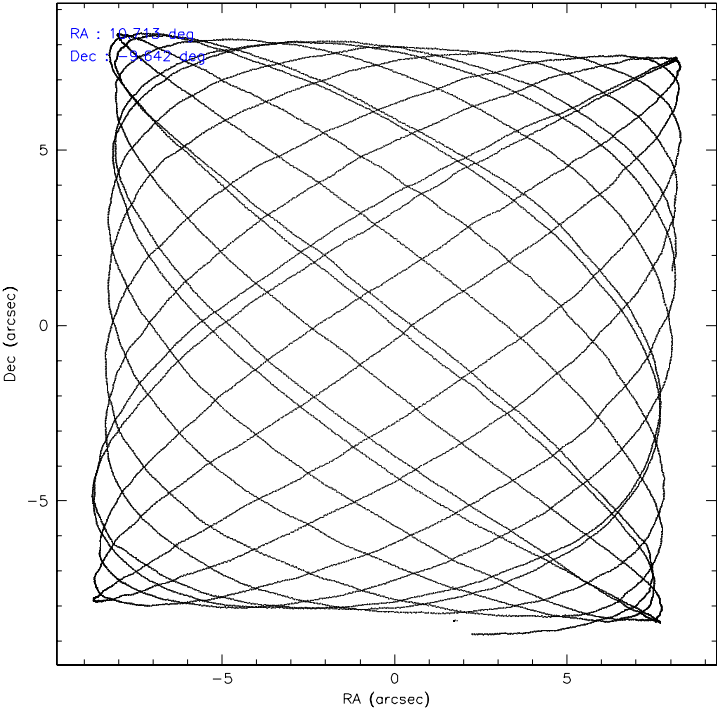
	ccd 0	ccd 1	ccd 2	ccd 3	ccd 5	ccd 7
level 1 events	71872	71255	76480	72451	140863	101106
rejected events	62719	61938	67283	63360	63455	62536
rejected %	87%	86%	87%	87%	45%	61%

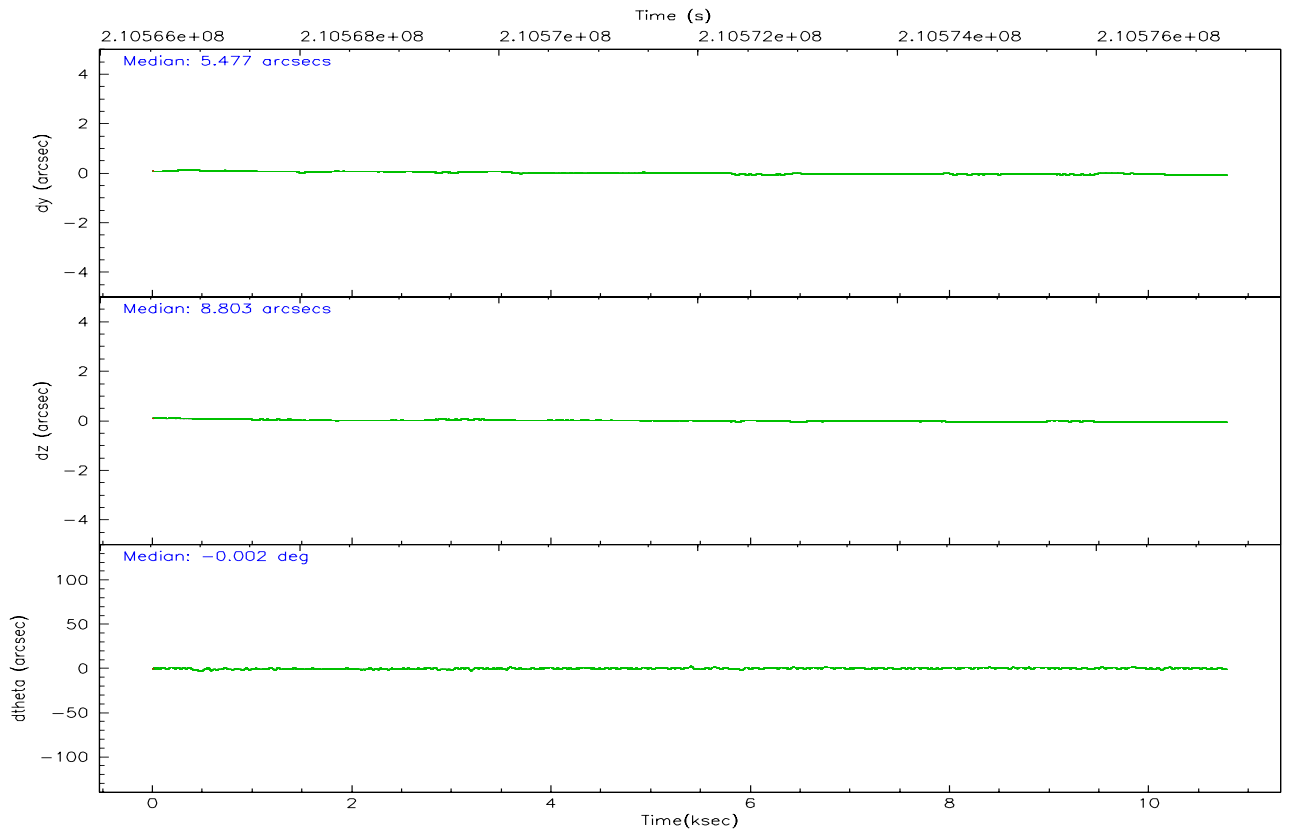
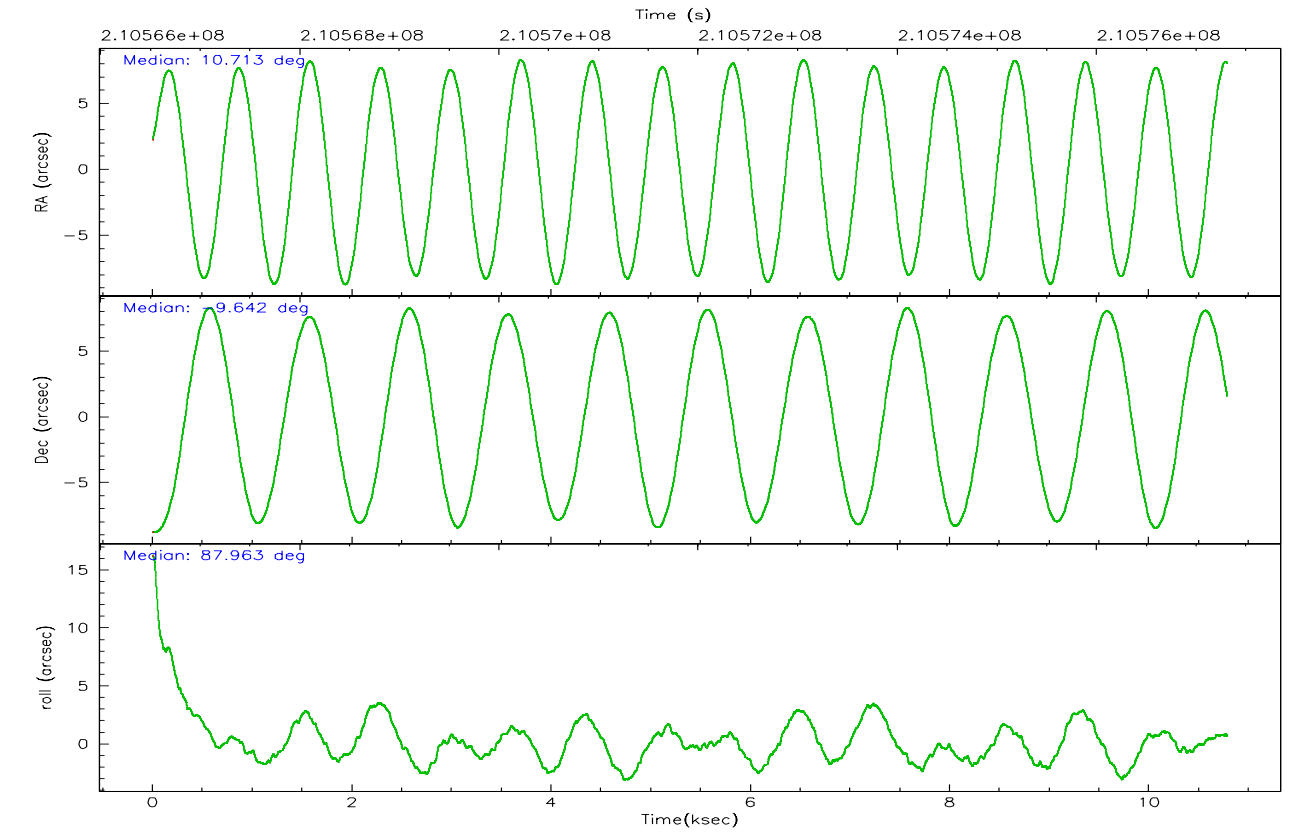
	ccd 0	ccd 1	ccd 2	ccd 3	ccd 5	ccd 7
grade 0 events	3883	3610	4205	4199	14662	2272
	5%	5%	5%	5%	10%	2%
grade 1 events	56	46	47	49	141	59
	0%	0%	0%	0%	0%	0%
grade 2 events	1917	2001	1861	1721	24300	9644
	2%	2%	2%	2%	17%	9%
grade 3 events	898	926	828	849	3061	1890
	1%	1%	1%	1%	2%	1%
grade 4 events	838	946	864	836	2898	1876
	1%	1%	1%	1%	2%	1%
grade 5 events	3075	3107	2894	3348	5493	6627
	4%	4%	3%	4%	3%	6%
grade 6 events	1620	1834	1440	1489	32509	22898
	2%	2%	1%	2%	23%	22%
grade 7 events	59585	58785	64341	59960	57799	55840
	82%	82%	84%	82%	41%	55%

2.2 Compared Parameters

Parameter	Planned	Actual	Parameter	Planned	Actual
Instrument	ACIS	ACIS	Obspar format version number	6	6
Detector	ACIS-012357	ACIS-012357	Obspar file type	PREDICTED	ACTUAL
Grating	NONE	NONE	Obspar update status	NONE	UPDATED
Data mode	VFAINT	VFAINT	On-chip summing requested	N	N
Observation mode	POINTING	POINTING	Subarray requested	NONE	NONE
Pointing RA	10.726370	10.71324813605506	Alternating exposures requested	N	N
Pointing Dec	-9.665765	-9.641625847162405	Primary exposure time	0.000000	3.2
Pointing Roll	87.763600	87.9700892802999			
SIM focus pos (mm)	-0.782348	-0.7809083437167272			
SIM defocus (mm)	0	0.001439871863259334			
SIM translation stage pos (mm)	-233.592463	-233.5874344608287			
SIM translation stage offset (mm)	0	-0.005018542100998502			
Observation start time	210567316.184000	210566057.89767			
Observation start date	2004-09-03T02:54:12	2004-09-03T02:34:17			
Observation end time	210577316.184000	210577450.77318			
Observation end date	2004-09-03T05:40:52	2004-09-03T05:44:10			
Read mode	TIMED	TIMED			

2.3 Aspect



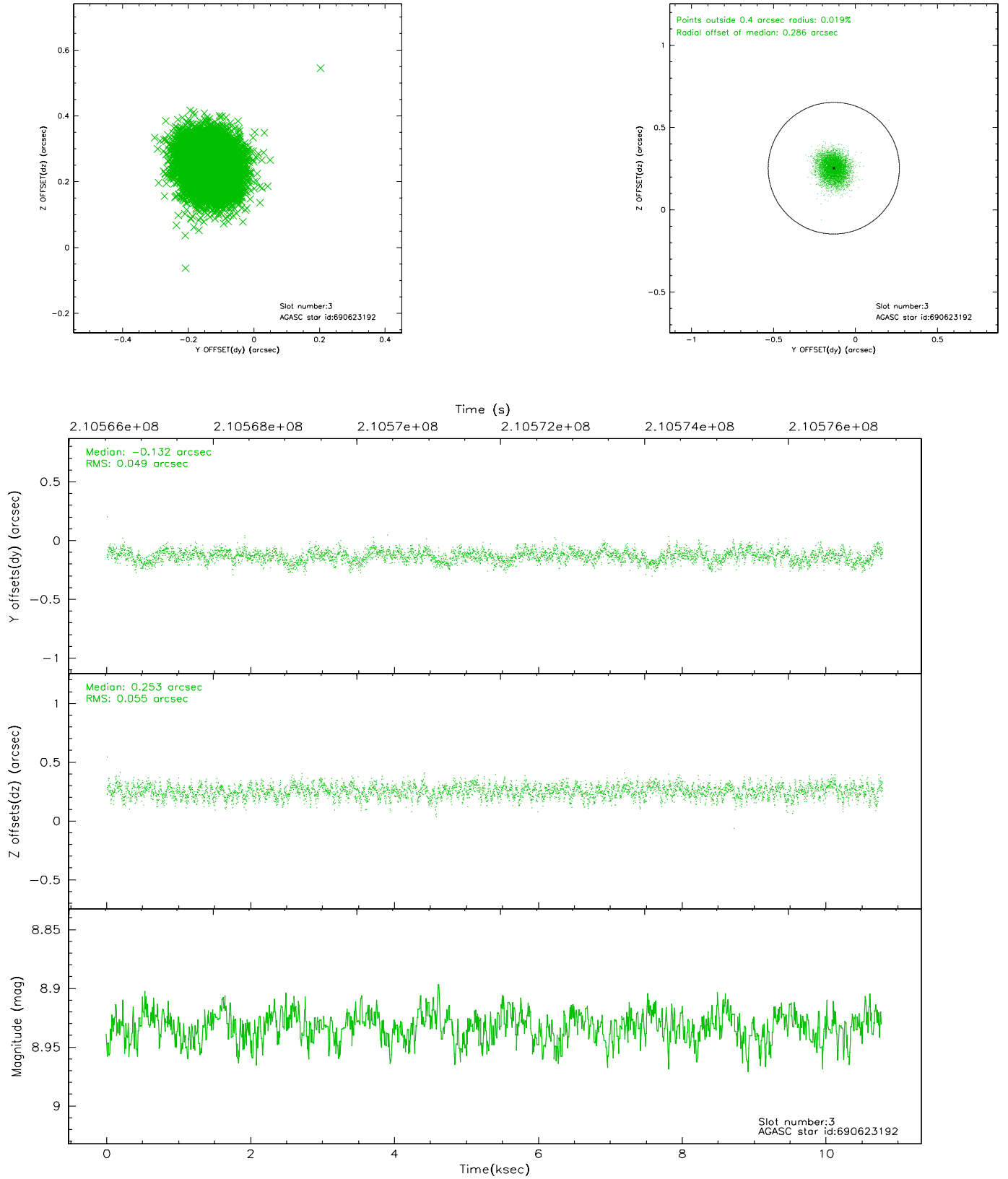


Slot Statistics

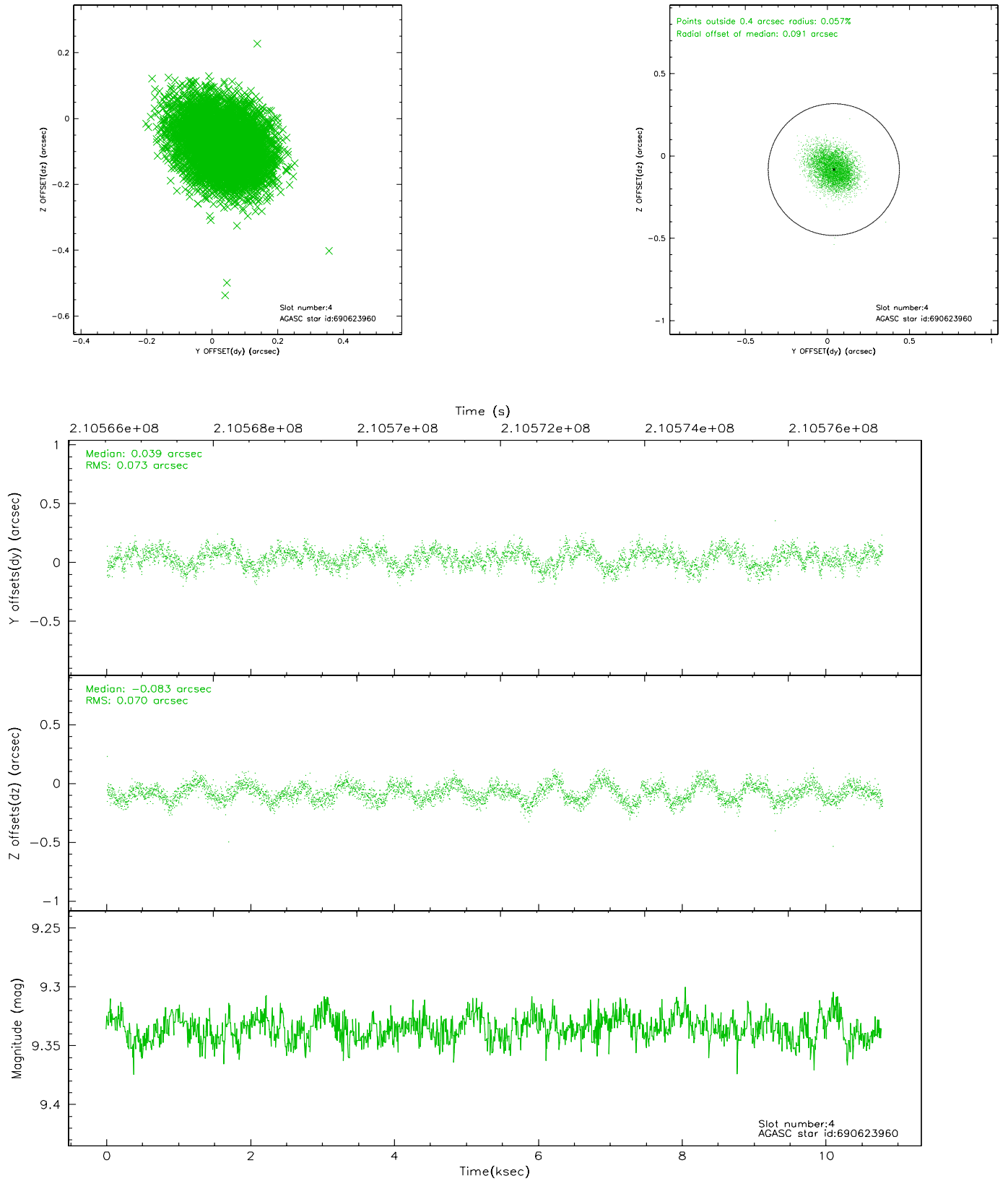
slot	status	id	mag	n_pts	med_dy	med_dz	dr1	dr2	ra	dec	mean_y	mean_z
0	FID	ACIS-I-2	7.13	2629	-0.050	-0.038	0.008	0.014	0.000000	0.000000	-759.98	-838.65
1	FID	ACIS-I-4	7.19	2629	0.089	0.046	0.006	0.010	0.000000	0.000000	2154.00	1067.36
2	FID	ACIS-I-5	7.22	2630	-0.140	0.062	0.008	0.014	0.000000	0.000000	-1813.27	1065.79
3	GUIDE	690623192	8.93	5260	-0.132	0.253	0.078	0.126	11.363175	-9.544394	523.17	-2241.83
4	GUIDE	690623960	9.34	5251	0.039	-0.083	0.108	0.171	10.570675	-9.168103	1768.78	622.89
5	GUIDE	690625160	8.91	5258	0.074	-0.107	0.122	0.185	10.224219	-9.960066	-1129.16	1737.85
6	GUIDE	690625776	9.14	5256	0.054	0.124	0.073	0.114	10.846019	-9.315741	1276.01	-376.27
7	GUIDE	690637960	6.80	5259	-0.043	-0.192	0.072	0.118	10.711431	-9.921690	-922.43	16.93

2.4 Star Slots

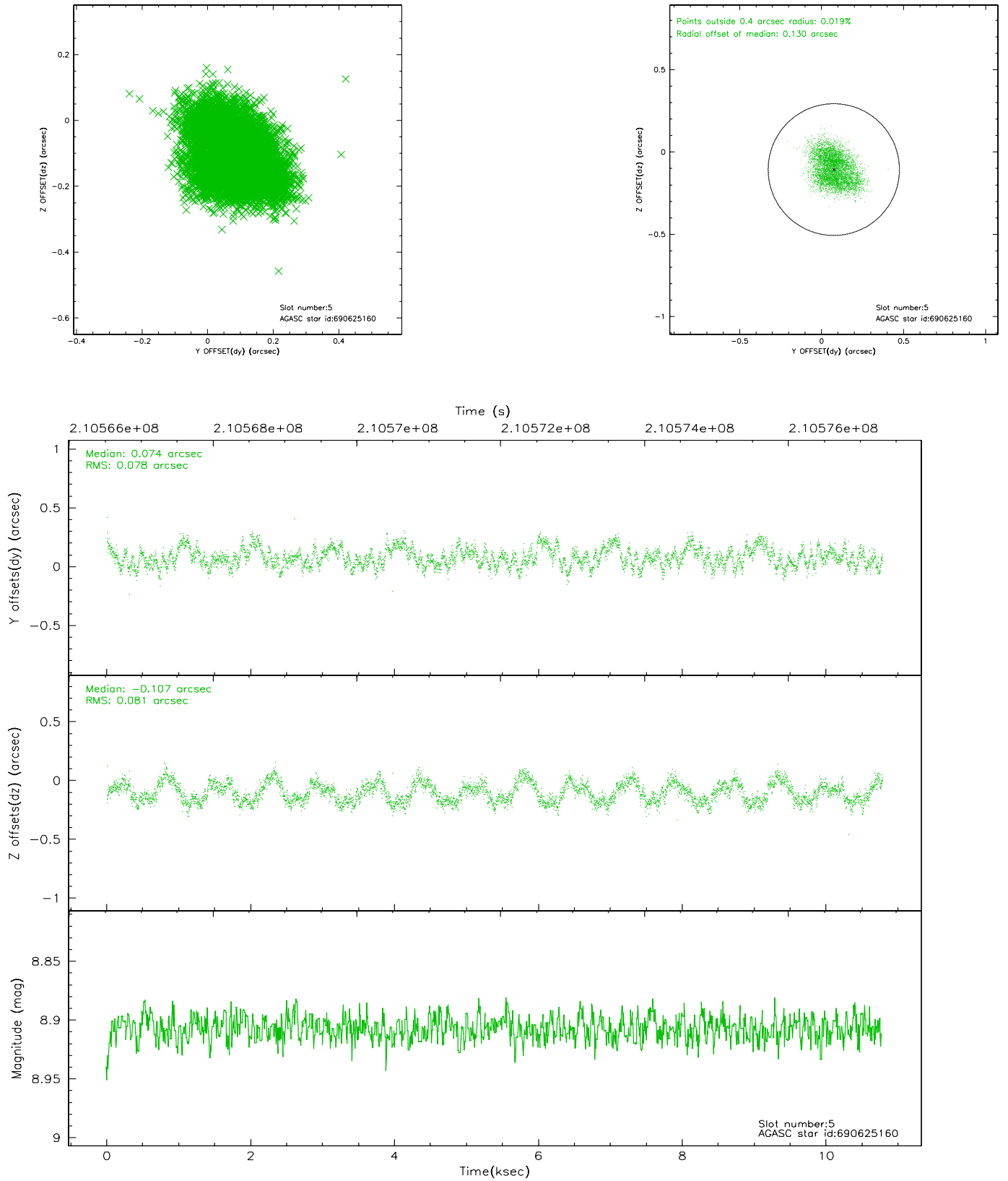
2.4.1 Slot 3



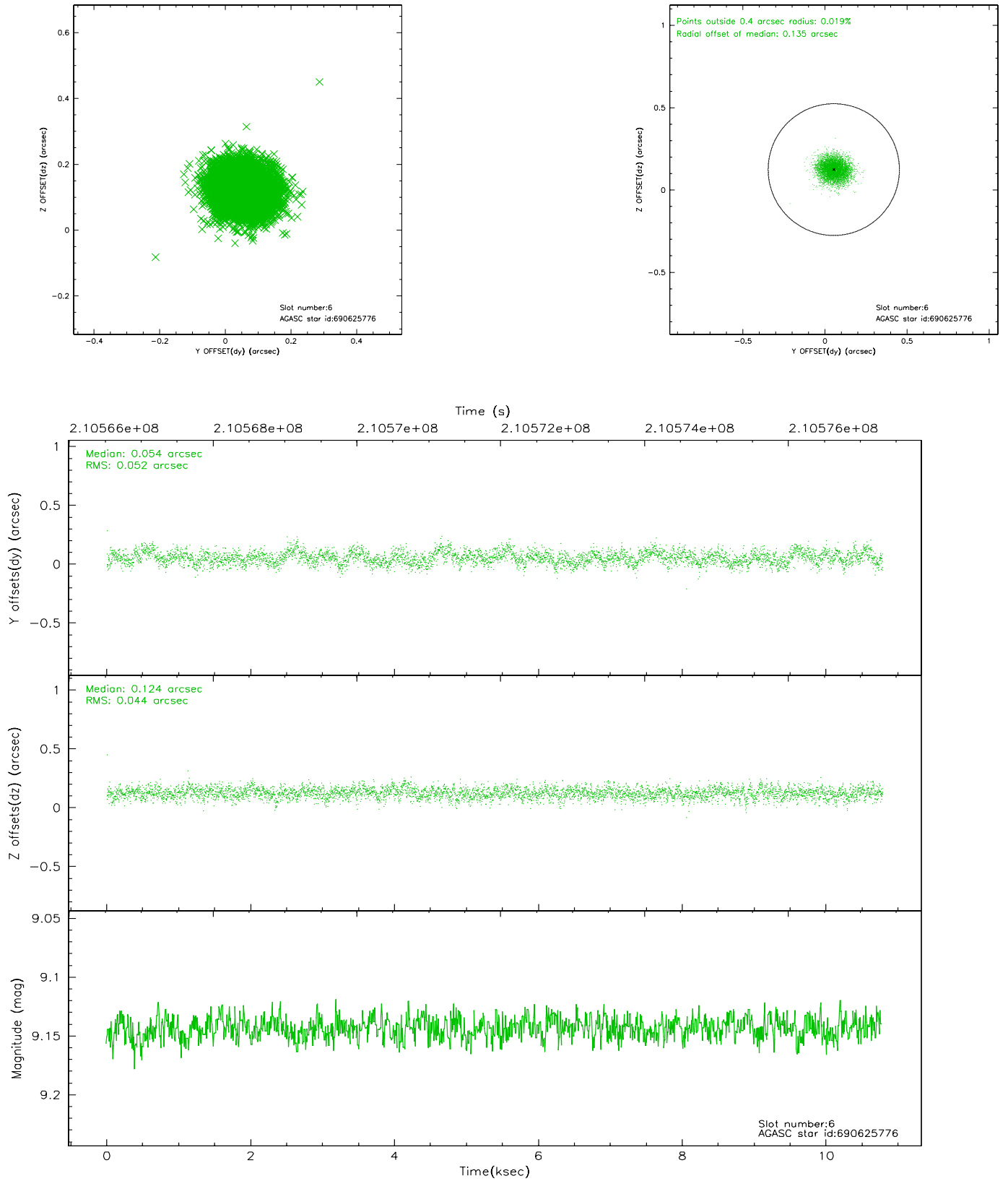
2.4.2 Slot 4



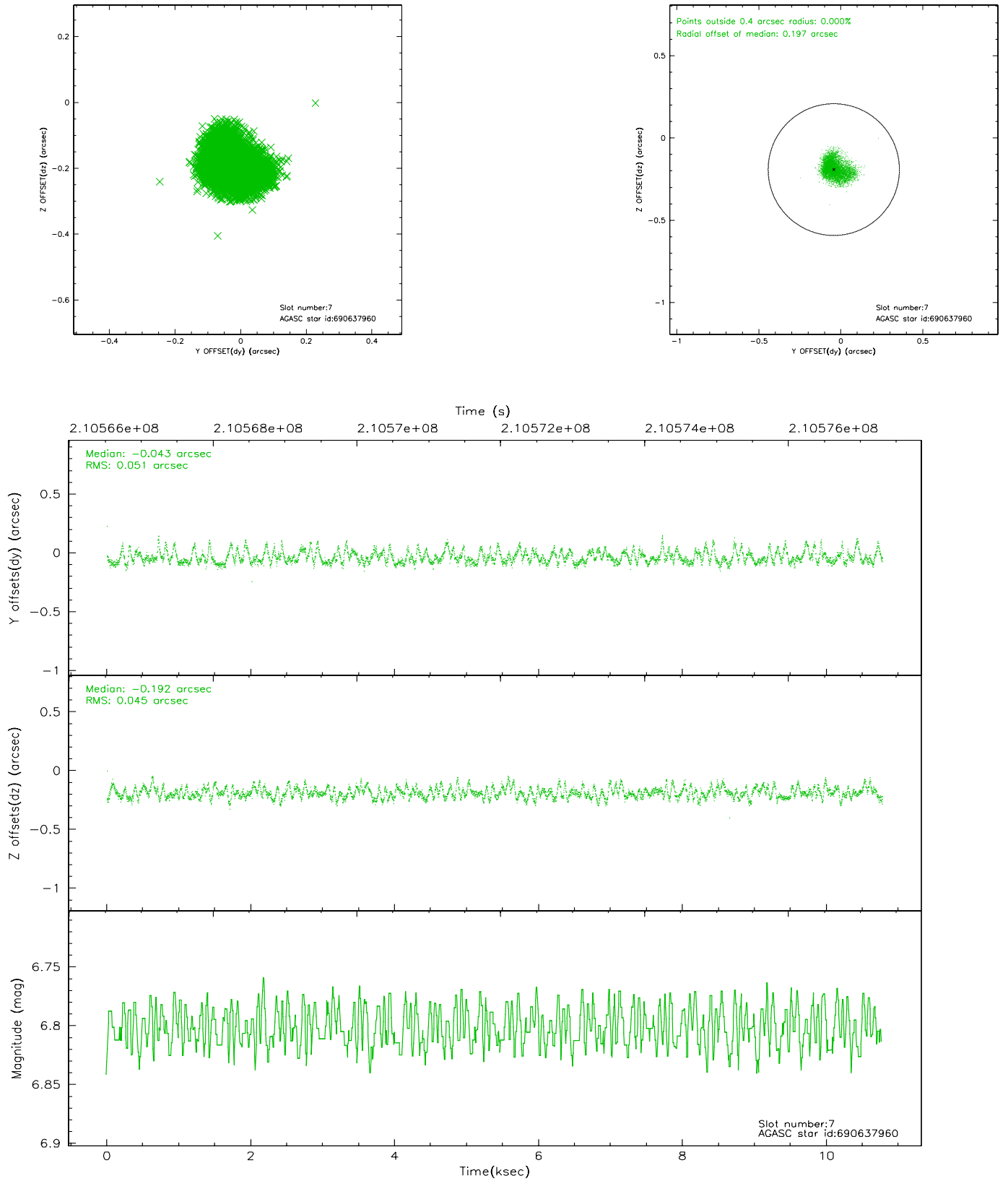
2.4.3 Slot 5



2.4.4 Slot 6

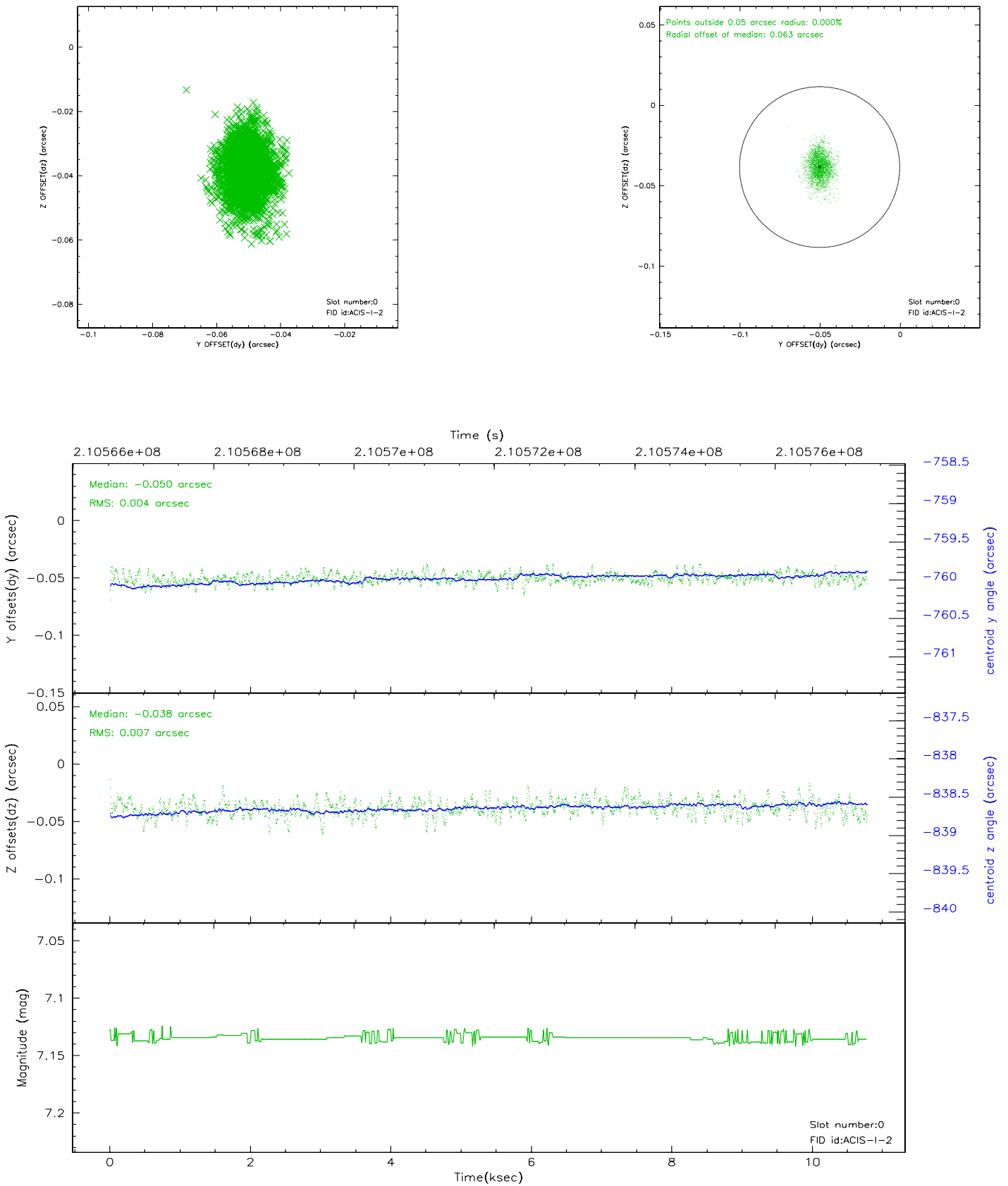


2.4.5 Slot 7

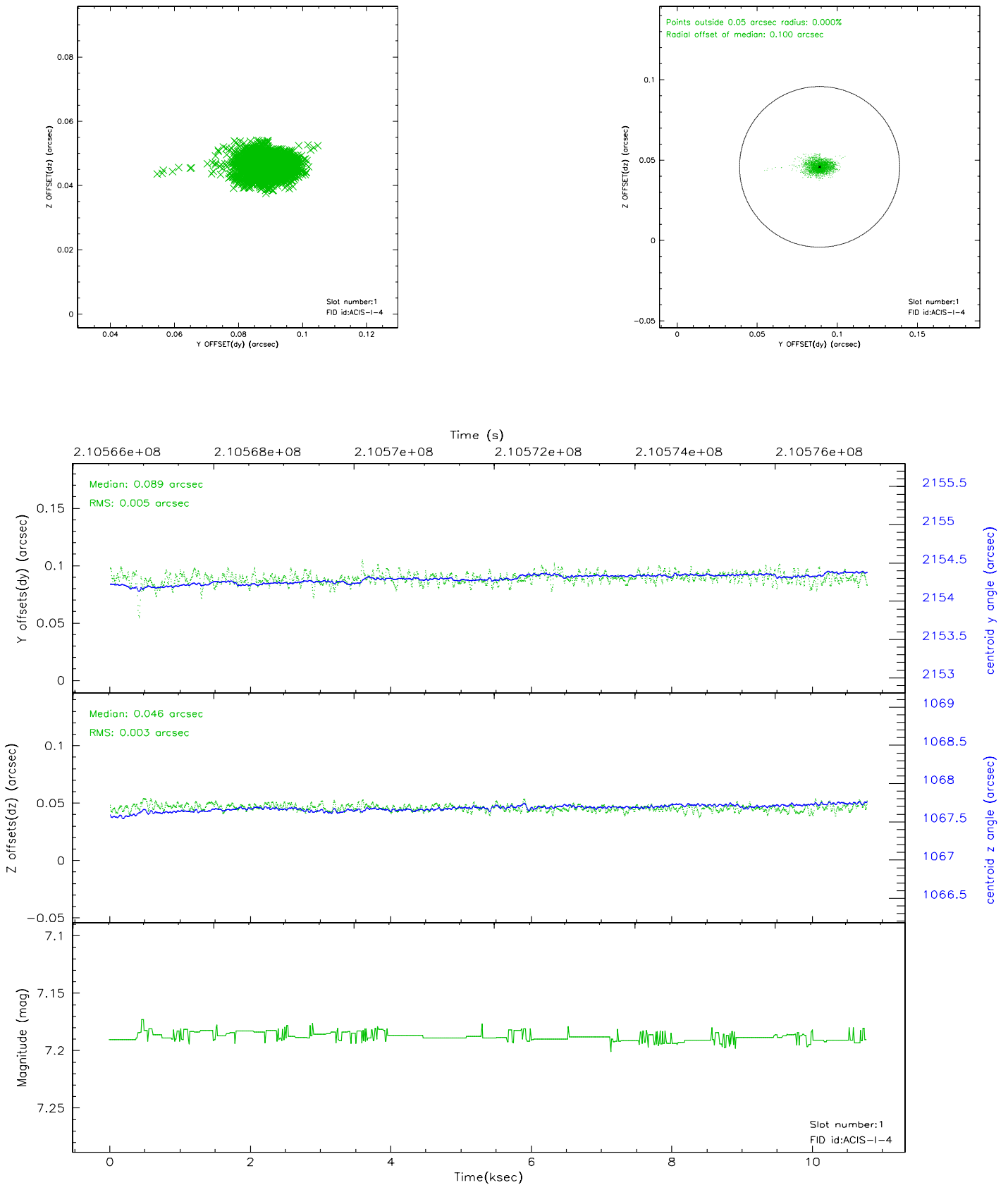


2.5 FID Slots

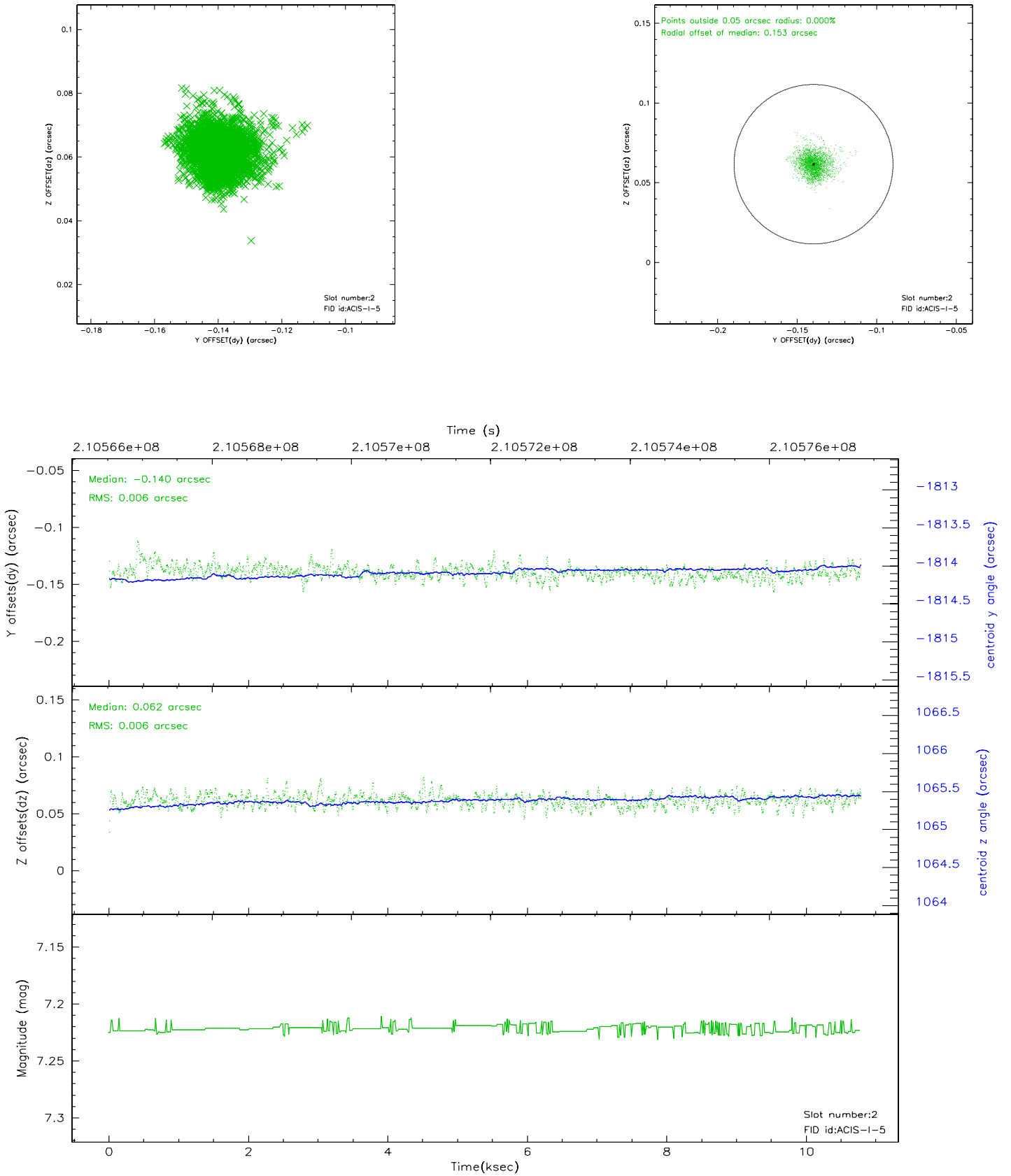
2.5.1 Slot 0



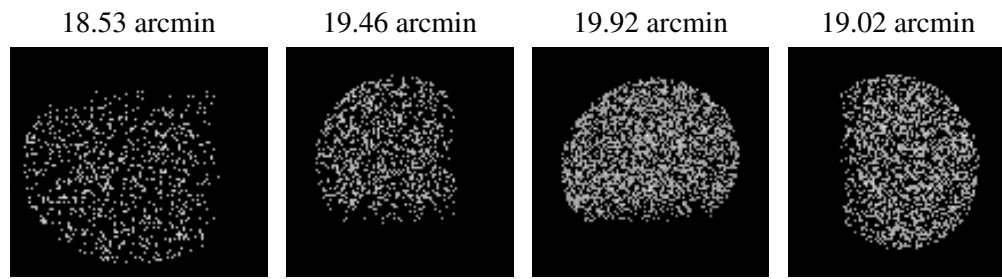
2.5.2 Slot 1



2.5.3 Slot 2



3 Point Sources



A Summary

A.1 Status

V&V Scientist	Jen Lauer
V&V Date (YYYY-MM-DD)	2006.04.19
V&V Edition	1
V&V Disposition and Status	OK
V&V Charge Time	9.958

A.2 Comments