

# V&V Reference Report

## L2 ASCDS Version : 8.5.1

Observation 4872 - L2 Version 3  
Chandra X-Ray Center

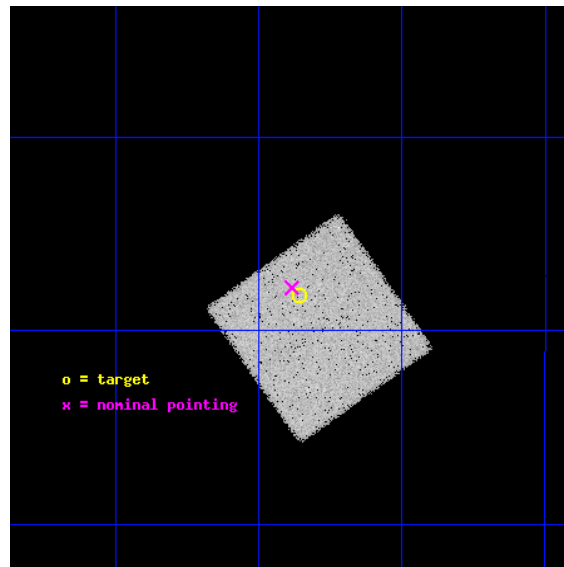
L2 Processing Date : Dec 18 2012

## Contents

<b>1</b>	<b>Front</b>	<b>2</b>
<b>2</b>	<b>OBI</b>	<b>3</b>
2.1	OBI . . . . .	3
2.1.1	Images . . . . .	3
2.1.2	Bias . . . . .	3
2.1.3	Parameters . . . . .	4
2.1.4	Events . . . . .	4
2.2	Compared Parameters . . . . .	5
2.3	Aspect . . . . .	6
2.4	Star Slots . . . . .	9
2.4.1	Slot 3 . . . . .	9
2.4.2	Slot 4 . . . . .	10
2.4.3	Slot 5 . . . . .	11
2.4.4	Slot 6 . . . . .	12
2.4.5	Slot 7 . . . . .	13
2.5	FID Slots . . . . .	14
2.5.1	Slot 0 . . . . .	14
2.5.2	Slot 1 . . . . .	15
2.5.3	Slot 2 . . . . .	16
<b>A</b>	<b>Summary</b>	<b>17</b>
A.1	Status . . . . .	17
A.2	Comments . . . . .	17

# 1 Front

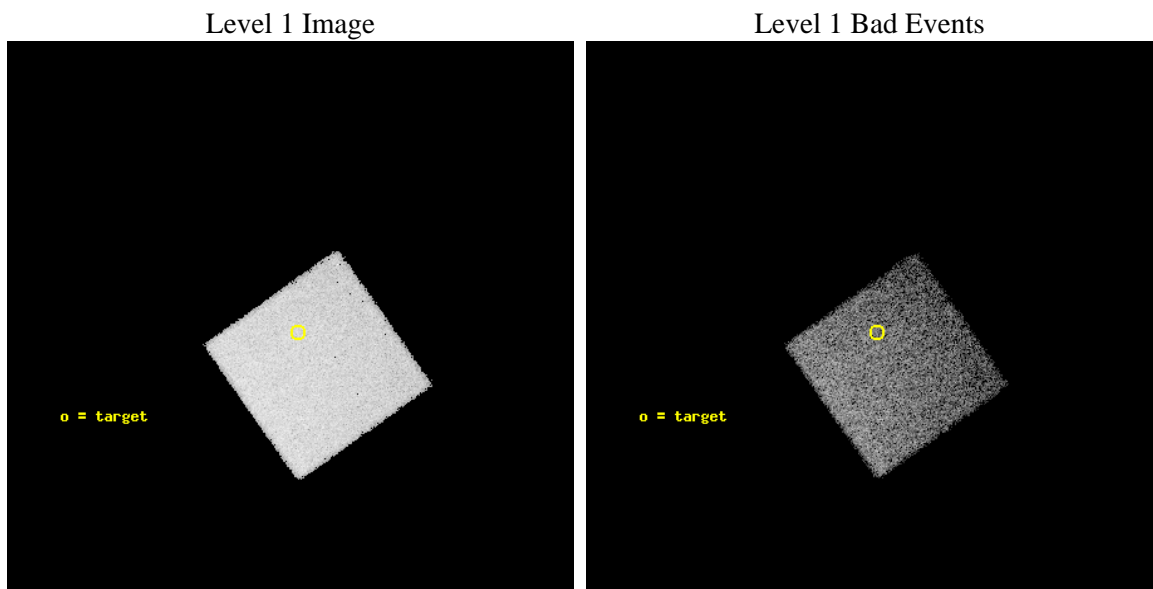
seq_num	700954	Sequence number
obs_id	4872	Observation id
title	UNCOVERING THE HIDDEN POPULATION OF BL LACS	Proposal title
observer	Dr Nicola Loaring	Principal investigator
object	2QZ J114221-014812	Source name
dtcycle	0	&#160
cycle	P	events from which exps? Prim/Second/Both
ra_targ	175.589167	Observer's specified target RA [deg]
dec_targ	-1.803389	Observer's specified target Dec [deg]
ra_nom	175.59603282297	Nominal RA [deg]
dec_nom	-1.7965771795013	Nominal Dec [deg]
roll_nom	54.739257841505	Nominal Roll [deg]
revision	3	Processing version of data
ontime	15174.0	Sum of GTIs [s]
livetime	14969.221055955	Livetime [s]
ontime7	15174.0	Sum of GTIs [s]
l2events	61045	Number of level 2 events



## 2 OBI

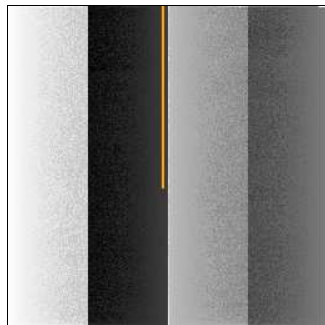
### 2.1 OBI

#### 2.1.1 Images



#### 2.1.2 Bias

Chip 7



### 2.1.3 Parameters

obi_num	1	Obi number	sched_exp_time	15000.000000	[s] Scheduled observation exposure time
ascdsver	8.5.1	Processing system revision	ontime	15174.0	Sum of GTIs [s]
caldsver	4.5.5	&#160	ontime7	15174.0	Sum of GTIs [s]
date	2012-12-18T05:39:55	Date and time of file creation	l1events	160617	Number of level 1 events
revision	3	Processing version of data			

### 2.1.4 Events

	<b>ccd 7</b>
level 1 events	160617
rejected events	98047
rejected %	61%

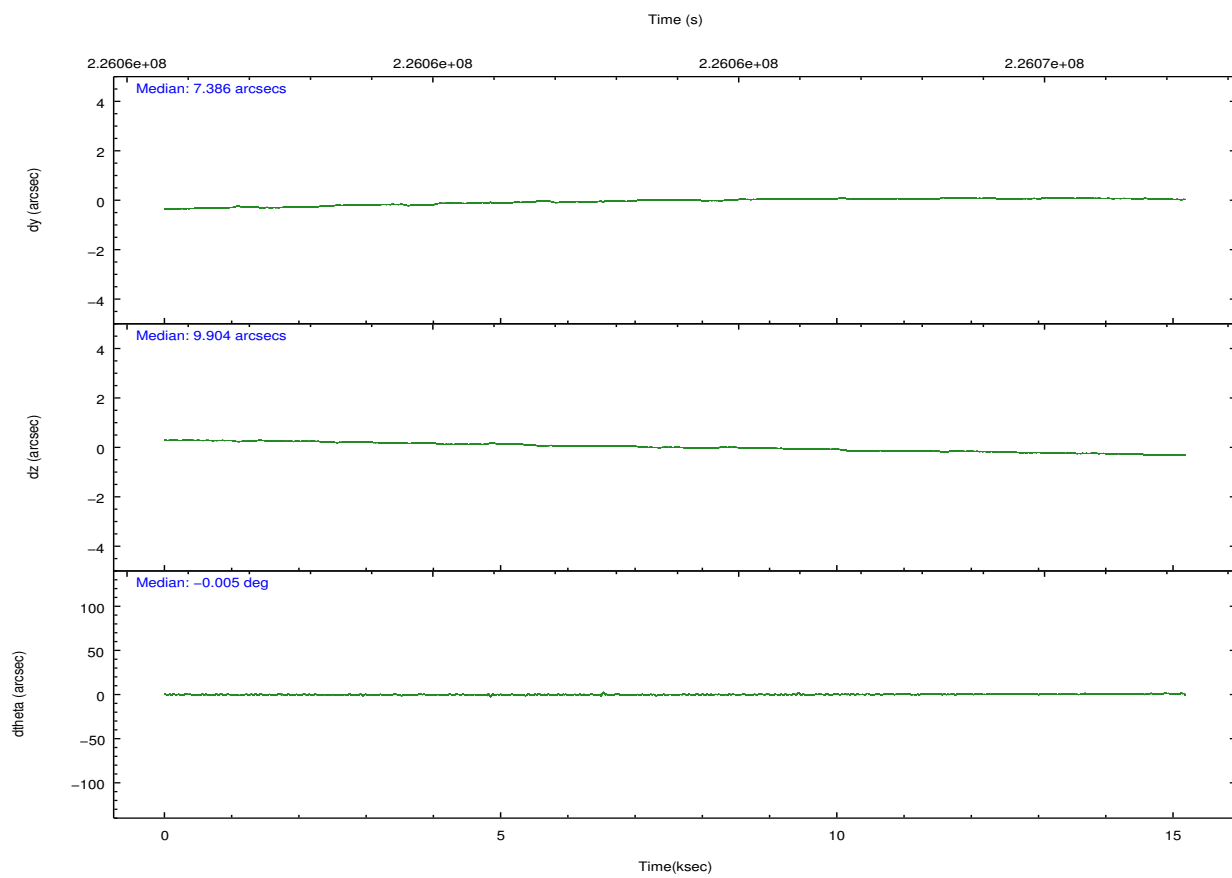
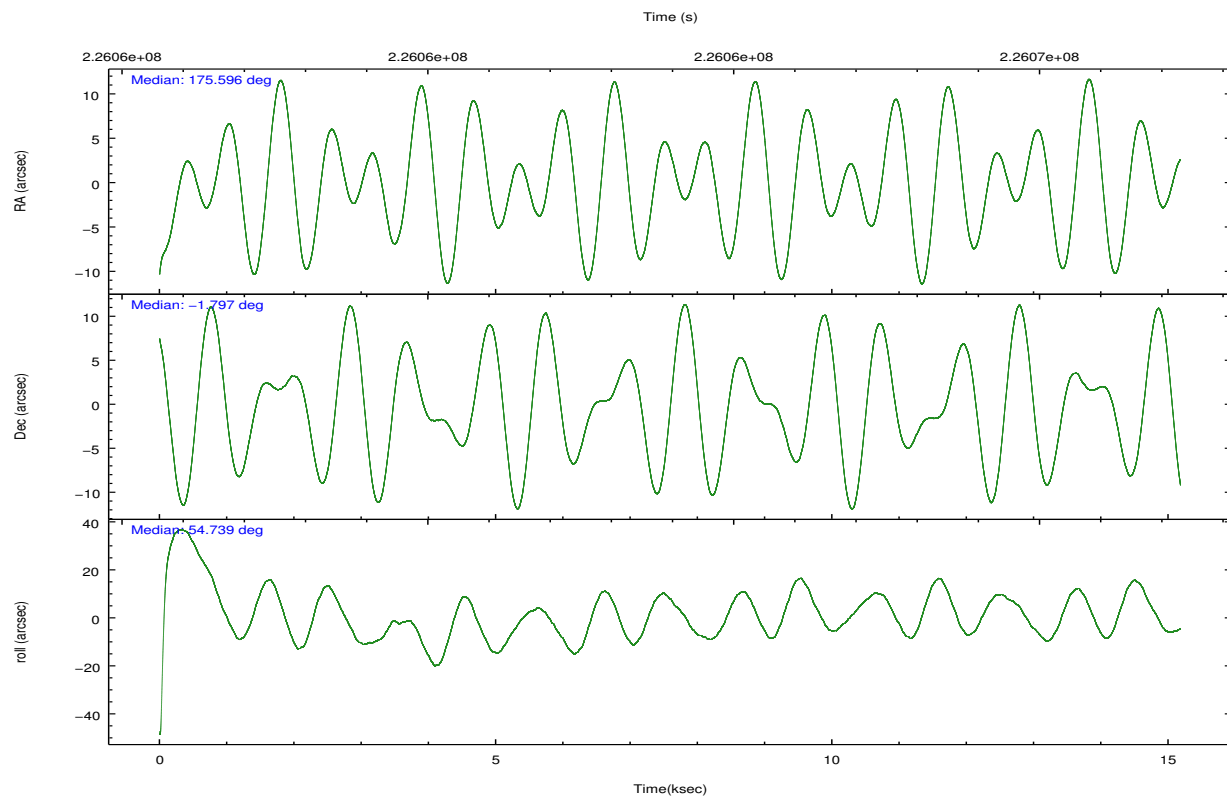
	<b>ccd 7</b>
grade 0 events	5952
	3%
grade 1 events	139
	0%
grade 2 events	13340
	8%
grade 3 events	6002
	3%
grade 4 events	5936
	3%
grade 5 events	15500
	9%
grade 6 events	35670
	22%
grade 7 events	78078
	48%



## 2.2 Compared Parameters

Parameter	Planned	Actual	Parameter	Planned	Actual
Instrument	ACIS	ACIS	Obspar format version number	7	7
Detector	ACIS-7	ACIS-7	Obspar file type	PREDICTED	ACTUAL
Grating	NONE	NONE	Obspar update status	NONE	UPDATED
Data mode	VFAINT	VFAINT	Number of optional ACIS chips dropped	0	0
Observation mode	POINTING	POINTING	On-chip summing requested	N	N
[deg] Pointing RA	175.593917	175.5960328229679	Subarray requested	NONE	NONE
[deg] Pointing Dec	-1.823747	-1.796577179501307	Alternating exposures requested	N	N
[deg] Pointing Roll	54.582627	54.73925784150503	[s] Primary exposure time	0.000000	3
[mm] SIM focus pos	-0.684267	-0.6828225247311905			
[mm] SIM defocus	0	0.001444936568705701			
[mm] SIM translation stage pos	-190.132523	-190.1400660498719			
[mm] SIM translation stage offset	0	0.00754346686406393			
[s] Observation start time (MET)	226056554.184000	226055315.8563			
Observation start date	2005-03-01T09:28:10	2005-03-01T09:08:35			
[s] Observation end time (MET)	226071554.184000	226072039.24456			
Observation end date	2005-03-01T13:38:10	2005-03-01T13:47:19			
Read mode	TIMED	TIMED			

## 2.3 Aspect

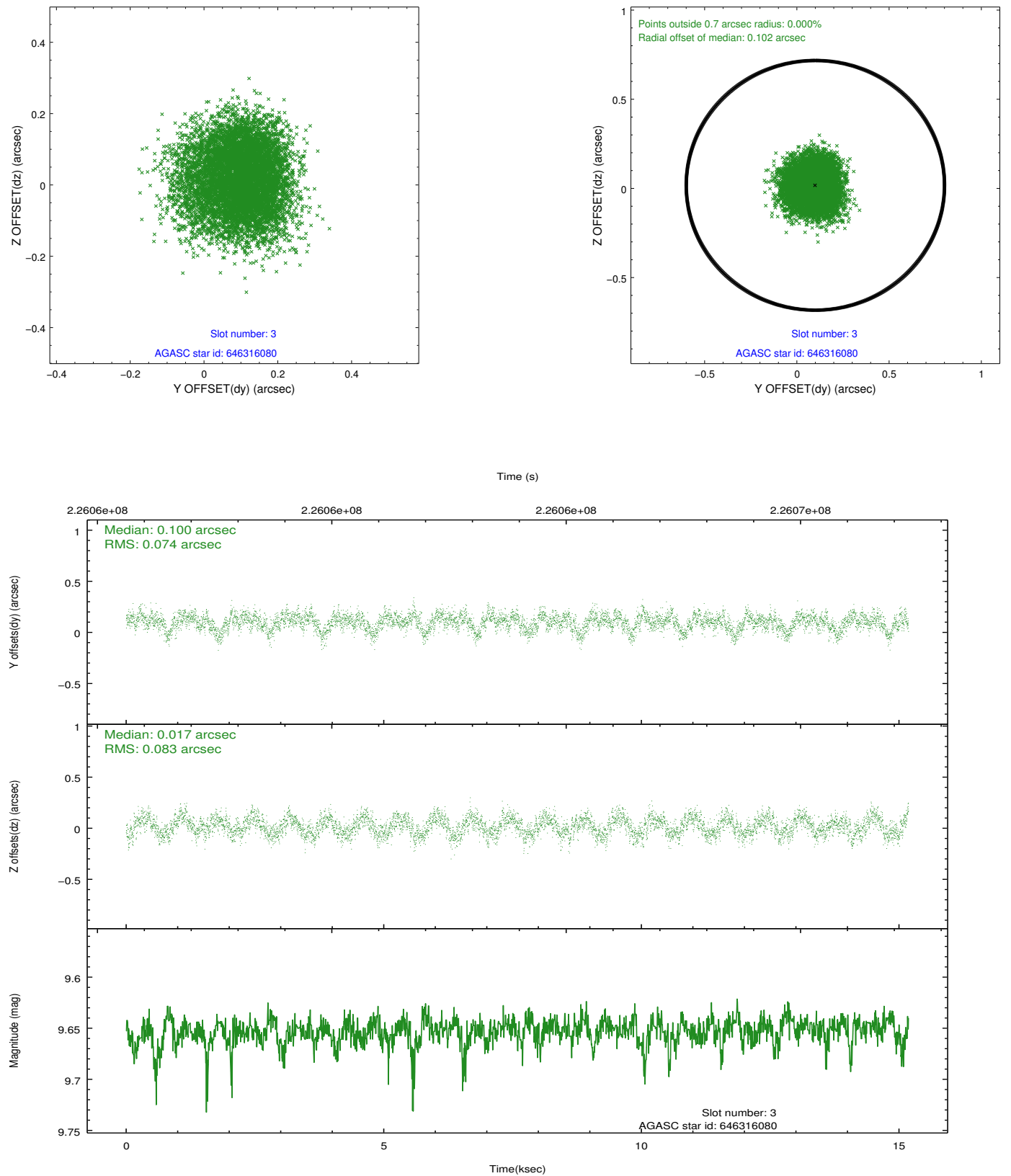


### Slot Statistics

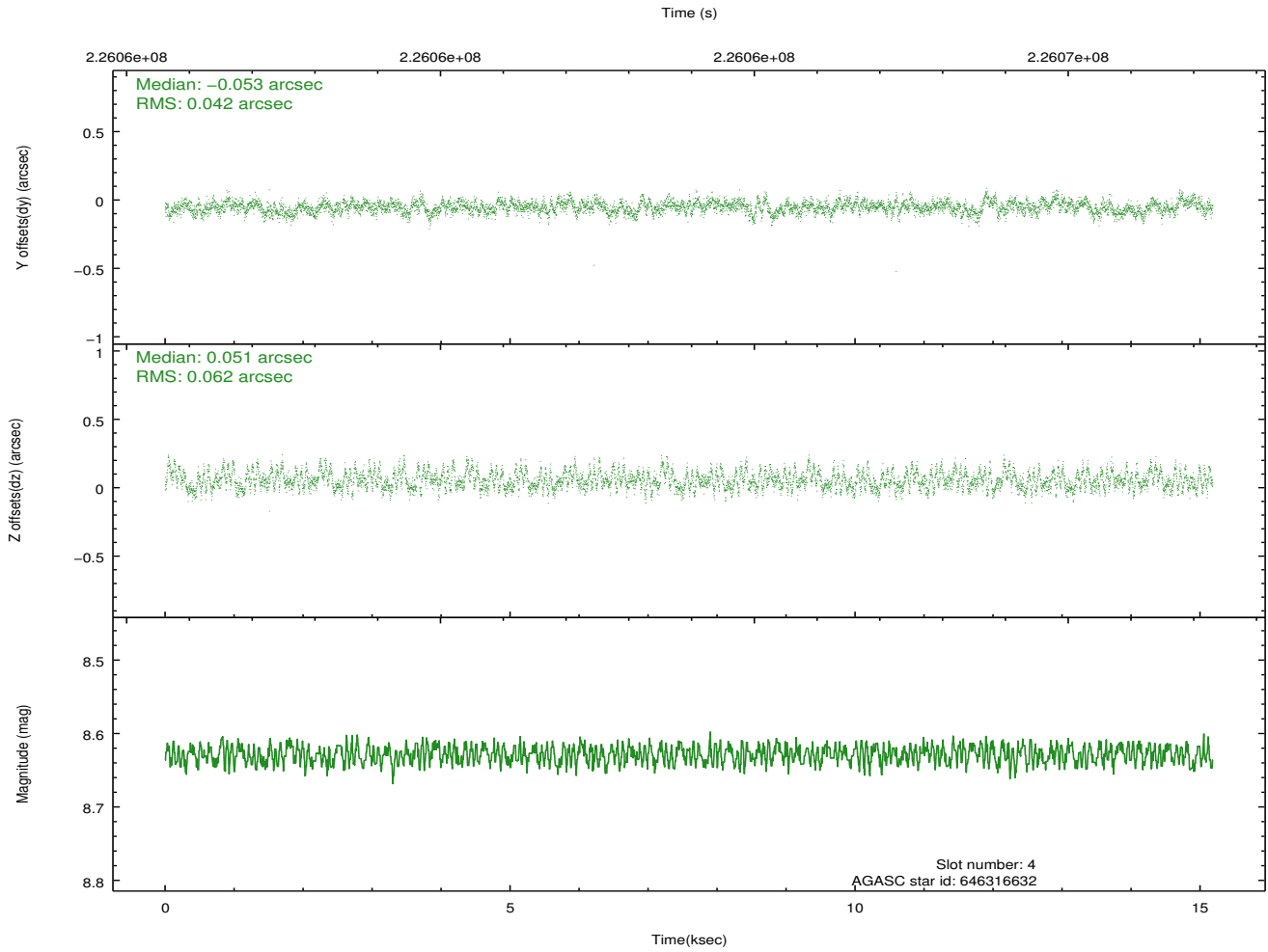
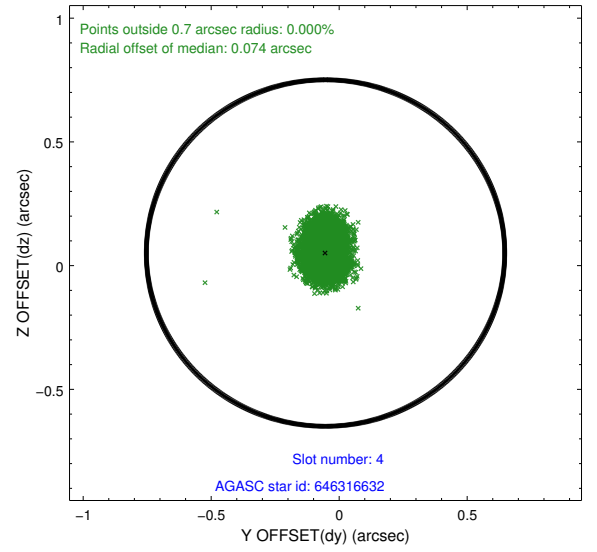
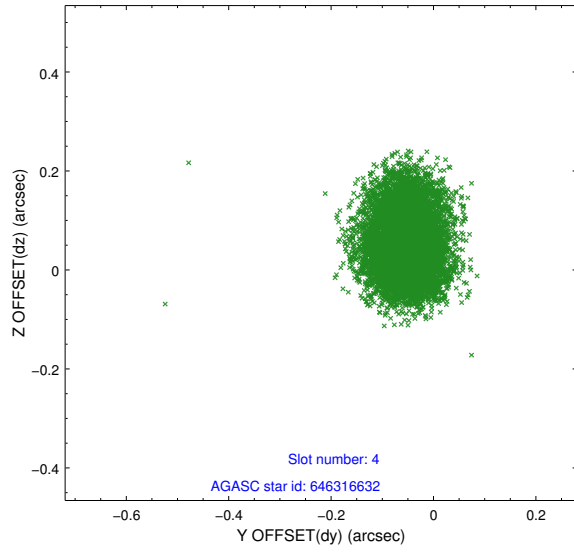
slot	status	id	mag	n_pts	med_dy	med_dz	dr1	dr2	ra	dec	mean_y	mean_z
0	FID	ACIS-S-2	7.10	3703	-0.048	-0.028	0.010	0.017	0.000000	0.000000	-760.10	-1731.20
1	FID	ACIS-S-4	7.20	3703	0.100	0.031	0.008	0.014	0.000000	0.000000	2153.15	177.10
2	FID	ACIS-S-5	7.23	3703	-0.083	0.006	0.011	0.020	0.000000	0.000000	-1812.63	171.00
3	GUIDE	646316080	9.65	7397	0.100	0.017	0.121	0.189	175.658524	-2.434808	-1657.19	-1463.99
4	GUIDE	646316632	8.63	7405	-0.053	0.051	0.079	0.127	175.959380	-2.346916	-772.67	-2162.73
5	GUIDE	646322952	9.77	7393	0.149	-0.142	0.140	0.228	175.354154	-1.823942	-500.12	702.57
6	GUIDE	646323408	9.56	7383	-0.134	0.224	0.133	0.216	176.217373	-2.038376	670.54	-2275.39
7	GUIDE	646324808	8.39	7400	-0.054	-0.157	0.059	0.097	175.125728	-1.837660	-1016.58	1343.71

## 2.4 Star Slots

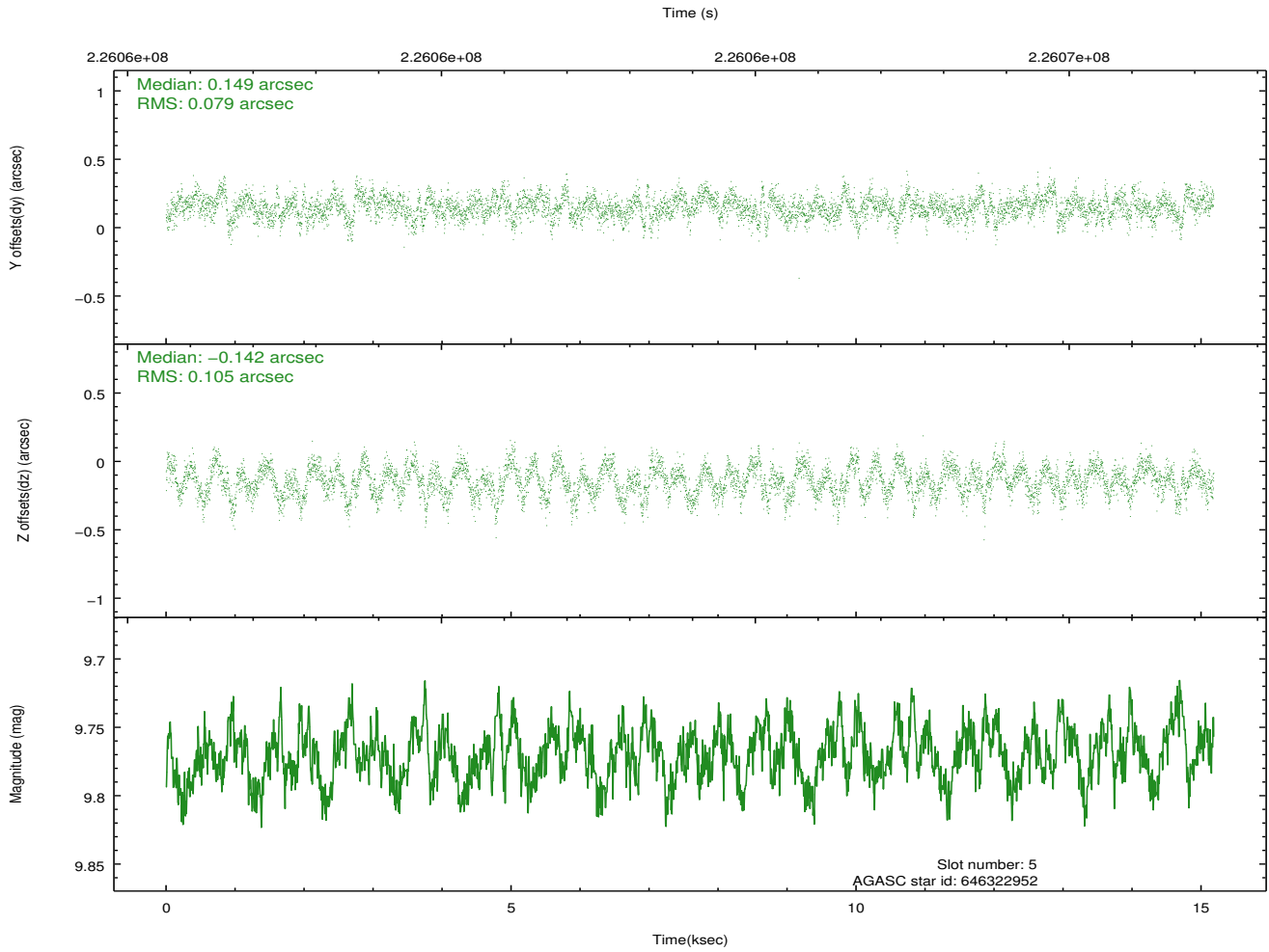
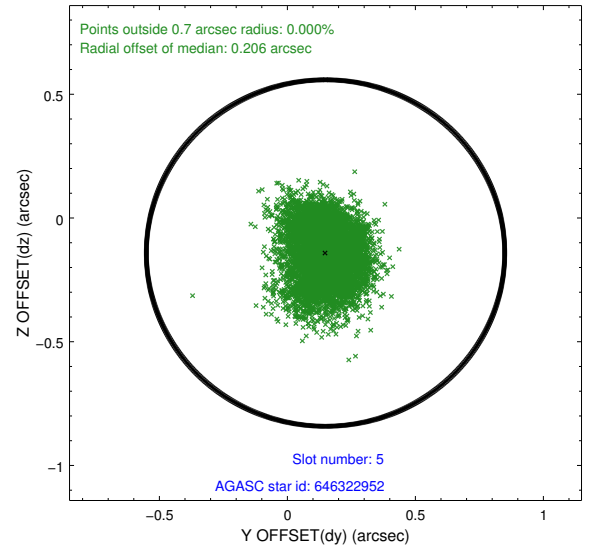
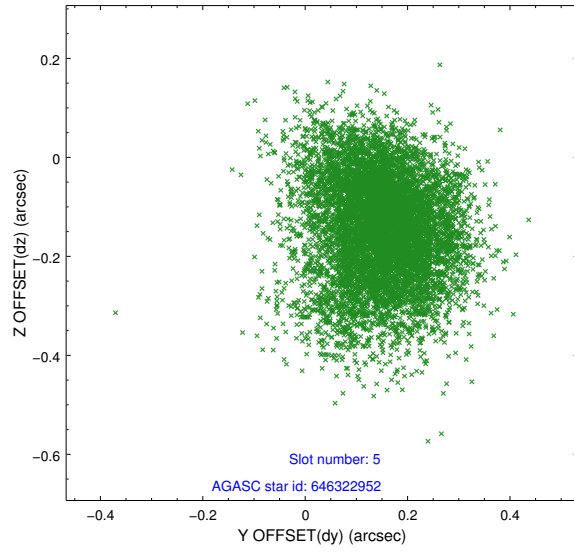
### 2.4.1 Slot 3



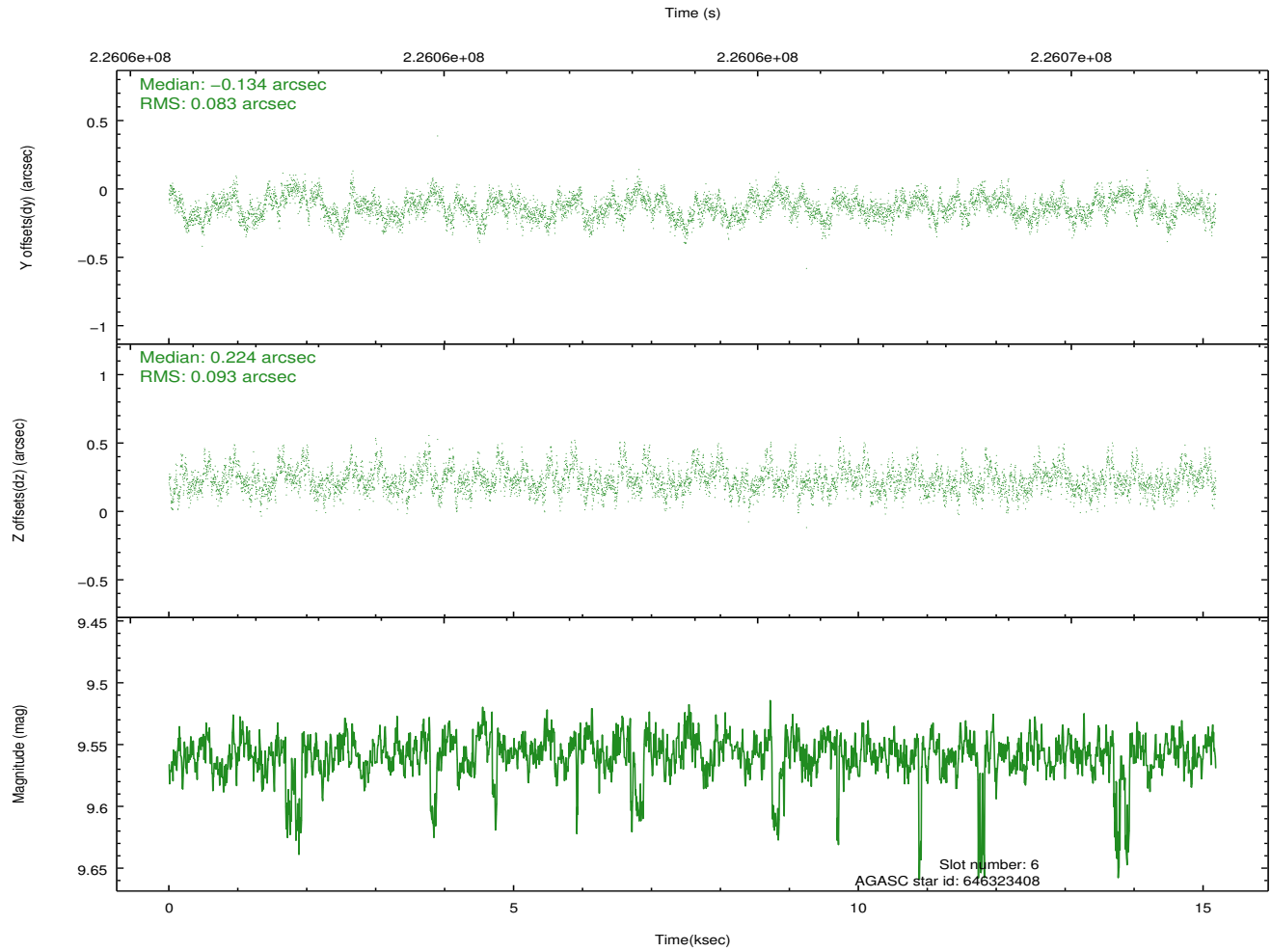
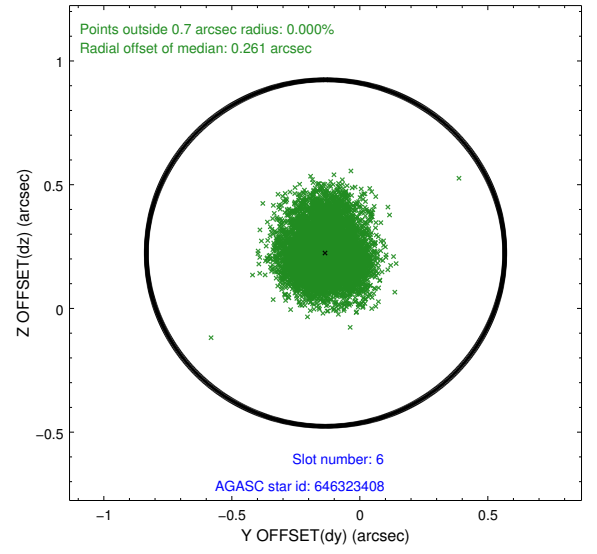
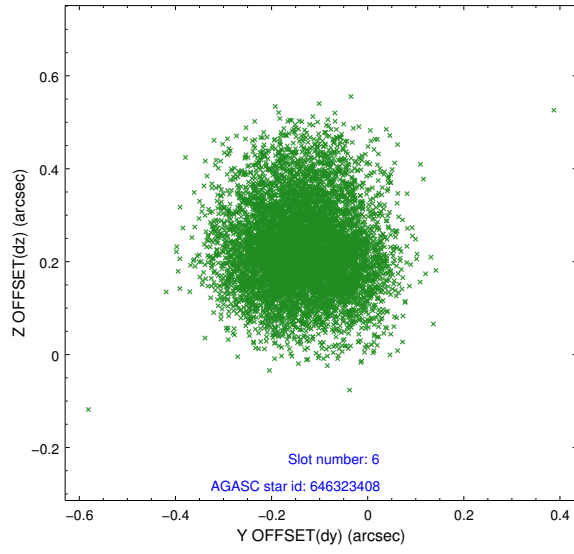
## 2.4.2 Slot 4



### 2.4.3 Slot 5

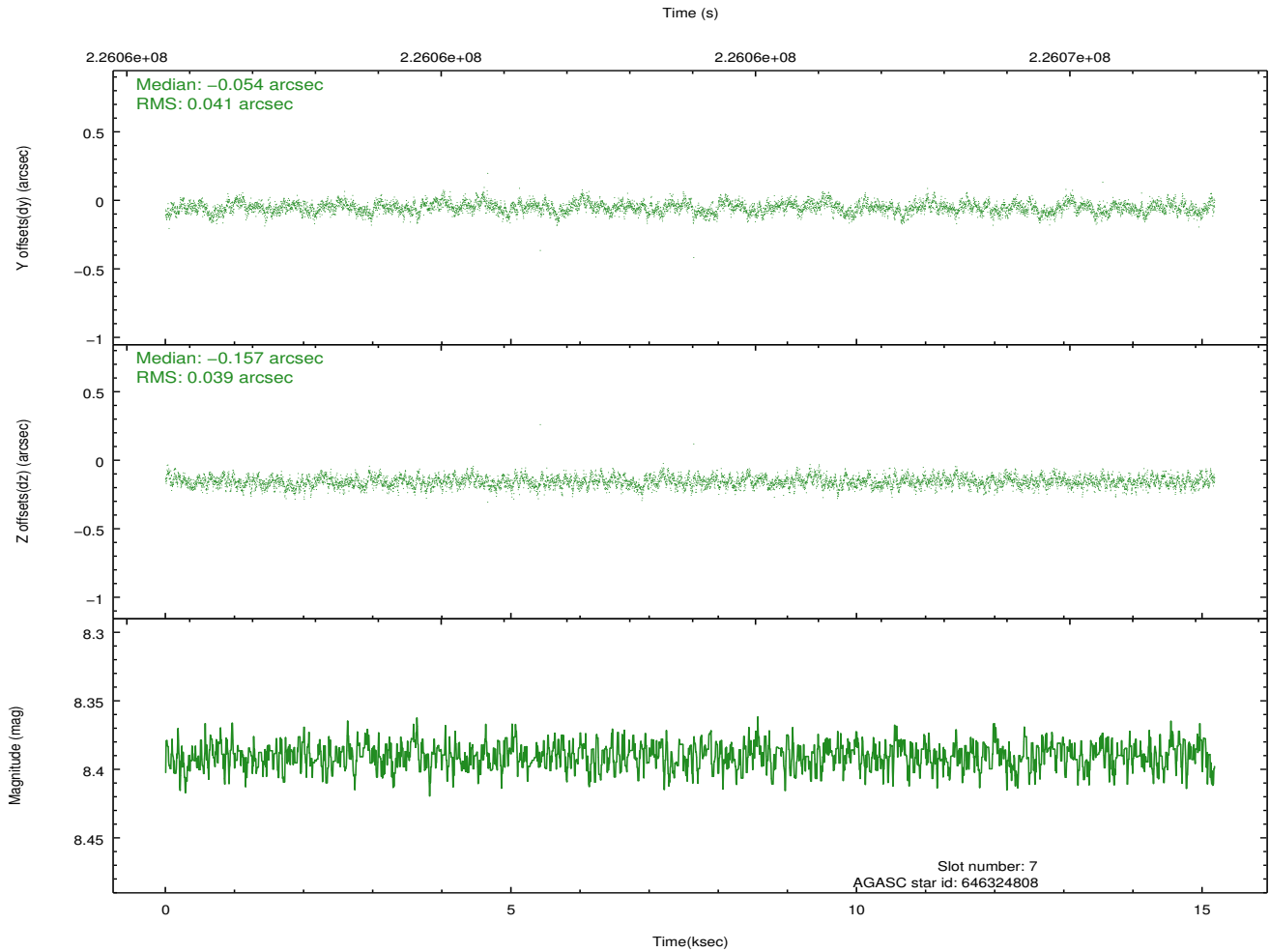
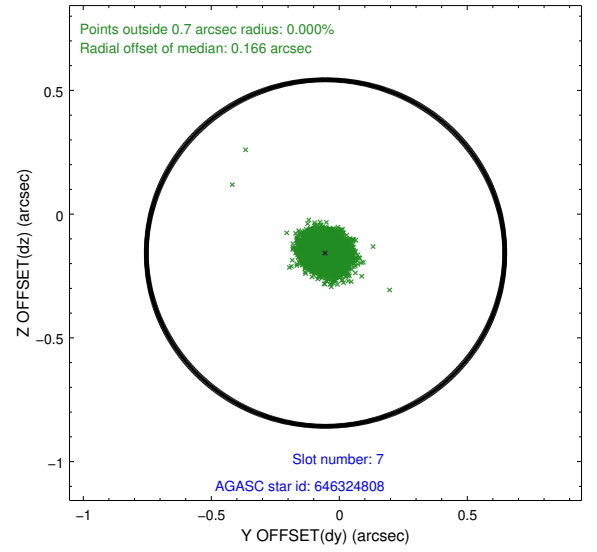
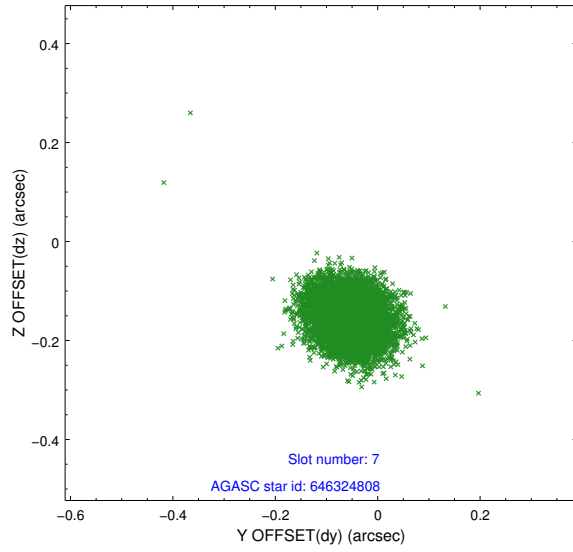


## 2.4.4 Slot 6



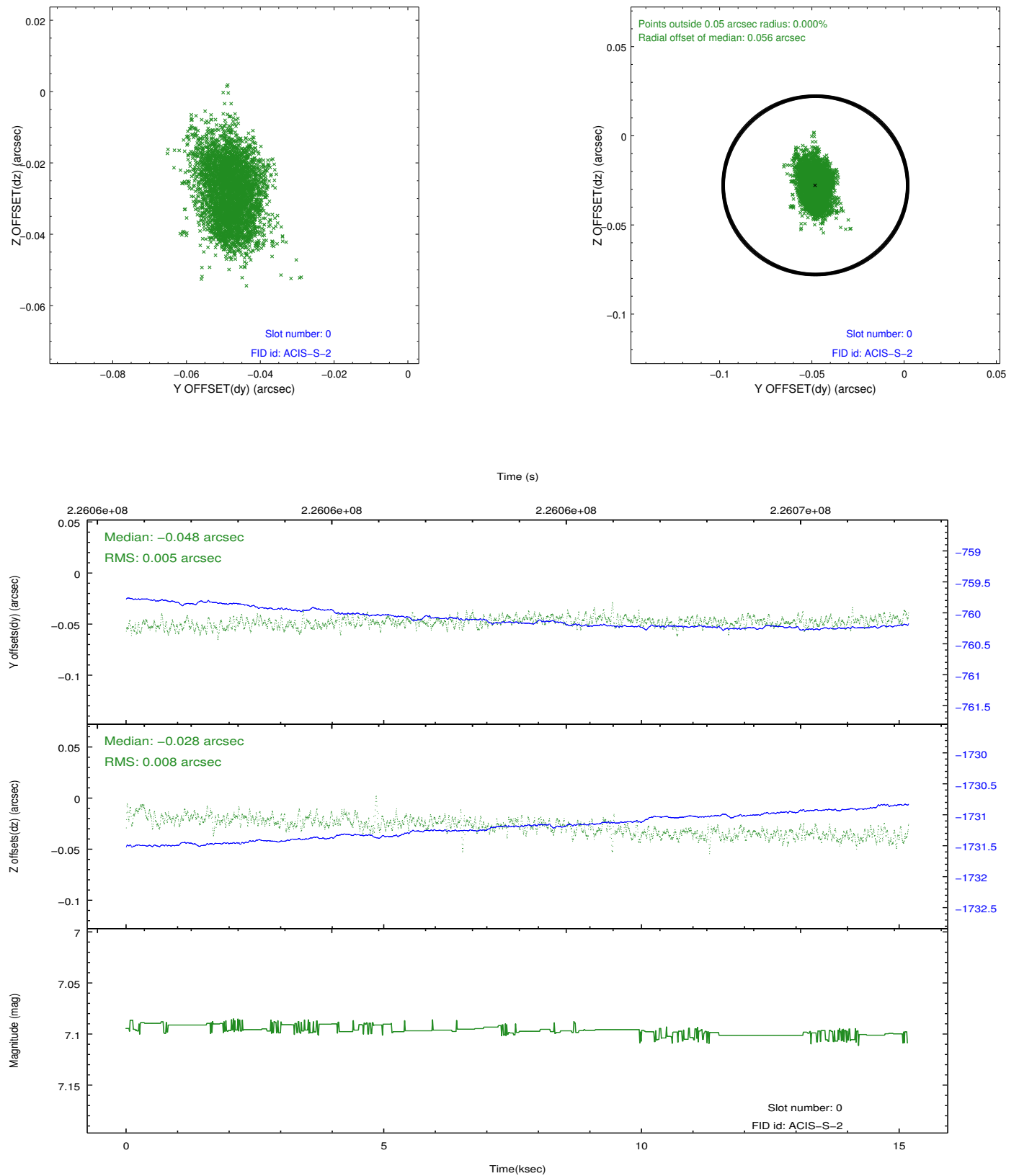


## 2.4.5 Slot 7

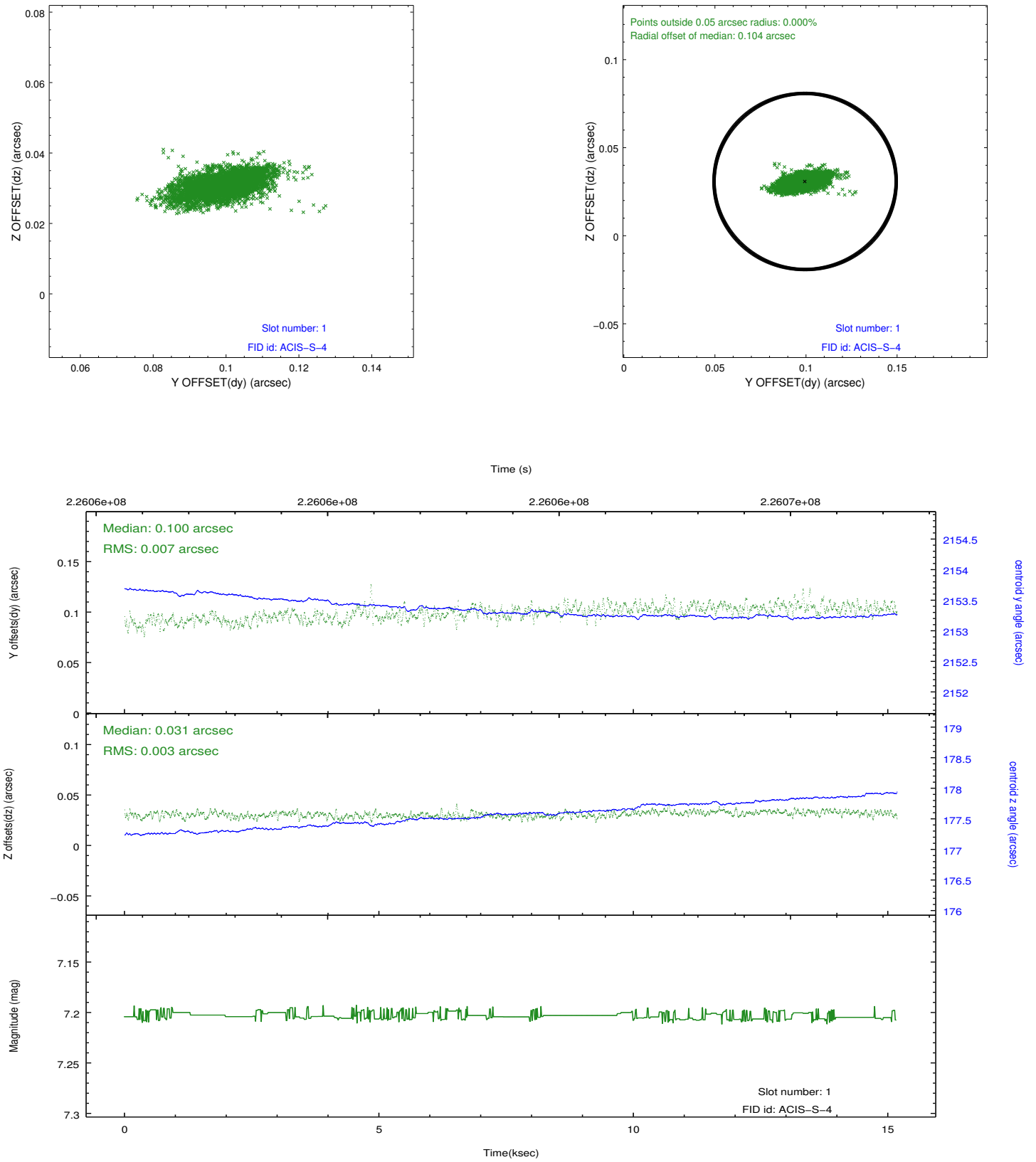


## 2.5 FID Slots

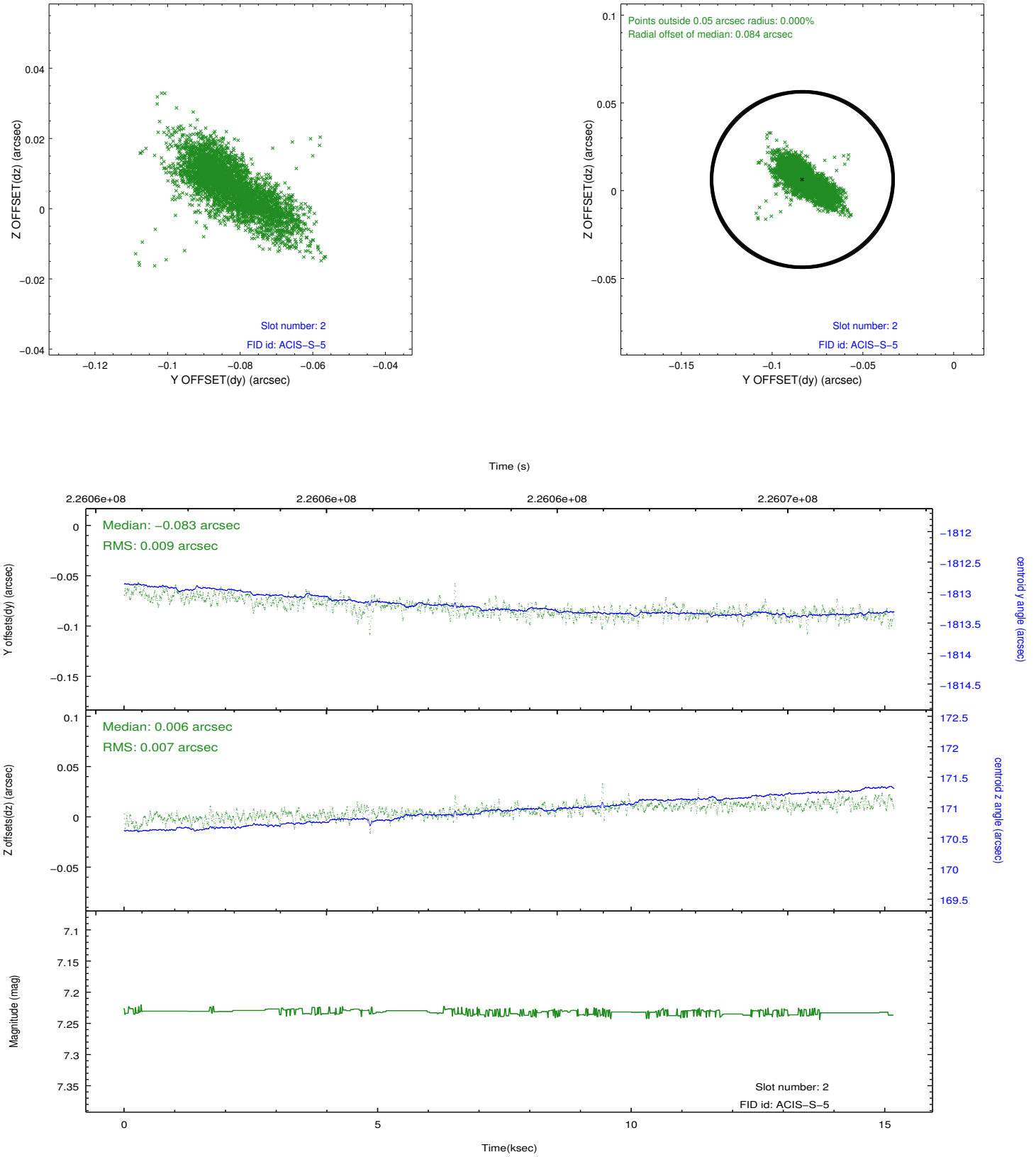
### 2.5.1 Slot 0



## 2.5.2 Slot 1



### 2.5.3 Slot 2



## A Summary

### A.1 Status

V&V Scientist	Jen Lauer
V&V Date (YYYY-MM-DD)	2013.01.10
V&V Edition	1
V&V Disposition and Status	OK
V&V Charge Time	15.174

### A.2 Comments