

# V&V Reference Report

## L2 ASCDS Version : 7.6.7.2

Observation 4868 - L2 Version 001  
Chandra X-Ray Center

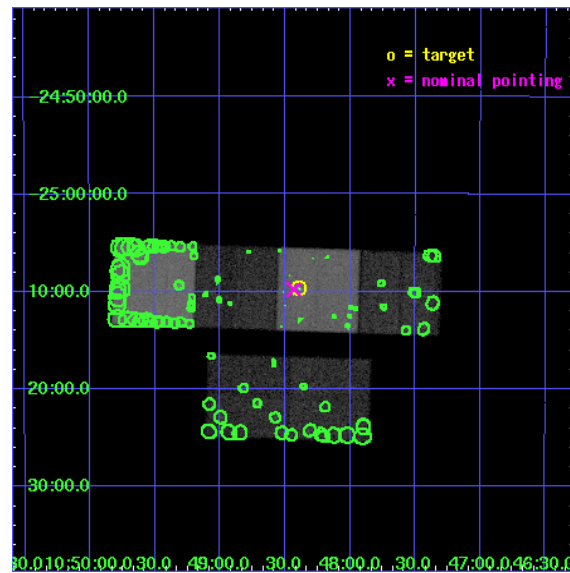
L2 Processing Date : May 31 2006

## Contents

<b>1</b>	<b>Front</b>	<b>2</b>
<b>2</b>	<b>OBI</b>	<b>3</b>
2.1	OBI . . . . .	3
2.1.1	Images . . . . .	3
2.1.2	Bias . . . . .	3
2.1.3	Parameters . . . . .	4
2.1.4	Events . . . . .	4
2.2	Compared Parameters . . . . .	5
2.3	Aspect . . . . .	6
2.4	Star Slots . . . . .	9
2.4.1	Slot 3 . . . . .	9
2.4.2	Slot 4 . . . . .	10
2.4.3	Slot 5 . . . . .	11
2.4.4	Slot 6 . . . . .	12
2.4.5	Slot 7 . . . . .	13
2.5	FID Slots . . . . .	14
2.5.1	Slot 0 . . . . .	14
2.5.2	Slot 1 . . . . .	15
2.5.3	Slot 2 . . . . .	16
<b>3</b>	<b>Point Sources</b>	<b>17</b>
<b>A</b>	<b>Summary</b>	<b>18</b>
A.1	Status . . . . .	18
A.2	Comments . . . . .	18

# 1 Front

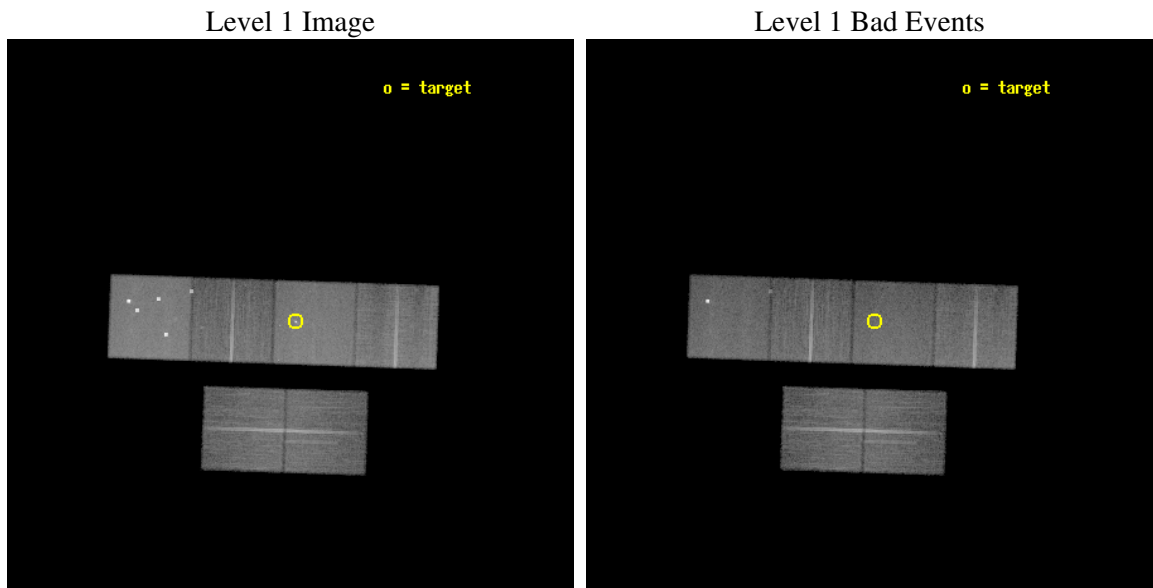
seq_num	700950
obs_id	4868
title	Probing Obscured AGN with X-ray Iron Lines
observer	Dr. Nancy Levenson
object	NGC 3393
dtcycle	0
cycle	P
ra_targ	162.0975
dec_targ	-25.161944
ra_nom	162.10806788952
dec_nom	-25.163321977772
roll_nom	1.9650929249424
revision	2
ontime	29708.799889326
livetime	29332.609176636
ontime2	29708.799889326
ontime3	29708.799889326
ontime5	29708.799889326
ontime6	29708.799889326
ontime7	29708.799889326
ontime8	29705.558988601
l2events	303206



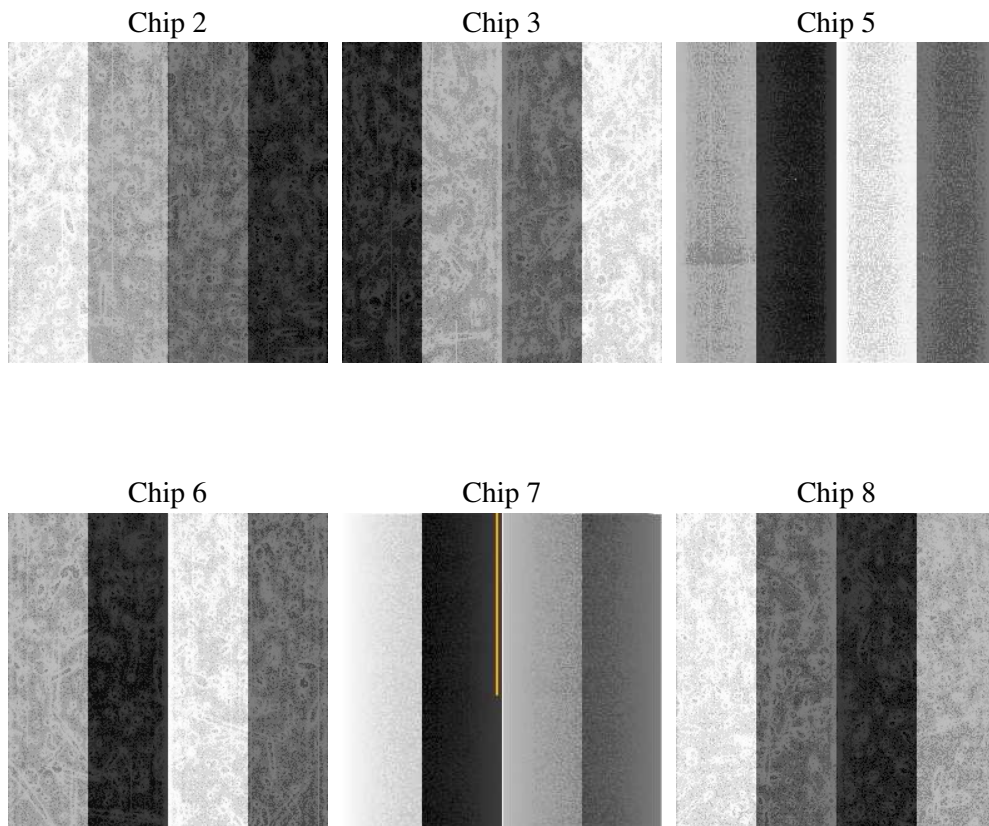
## 2 OBI

### 2.1 OBI

#### 2.1.1 Images



#### 2.1.2 Bias



### 2.1.3 Parameters

obi_num	0
ascdsver	7.6.7.2
caldsver	3.2.2
date	2006-05-31T08:43:44
revision	2

sched_exp_time	29957.971000
ontime	29716.841901451
ontime2	29716.841901451
ontime3	29716.841901451
ontime5	29716.841921359
ontime6	29716.841901451
ontime7	29716.841901451
ontime8	29713.600931048
l1events	1409545

### 2.1.4 Events

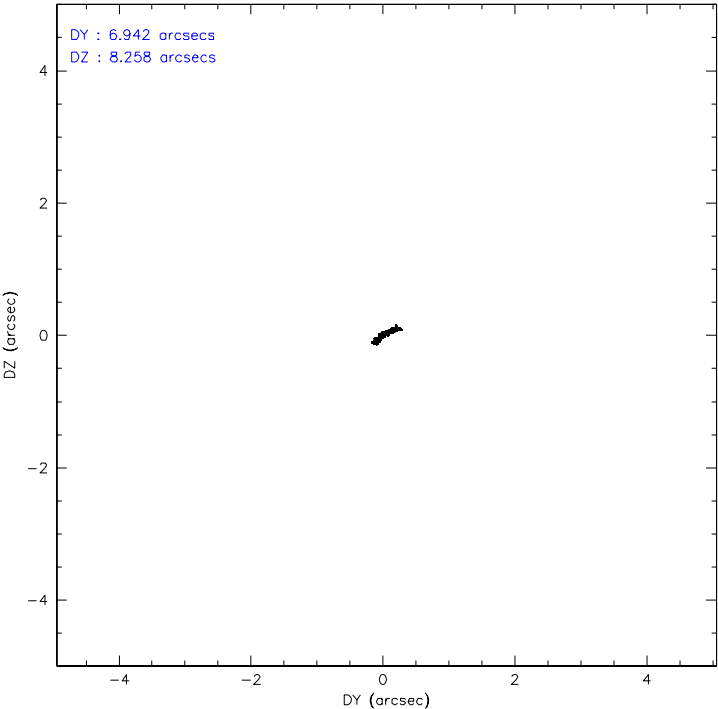
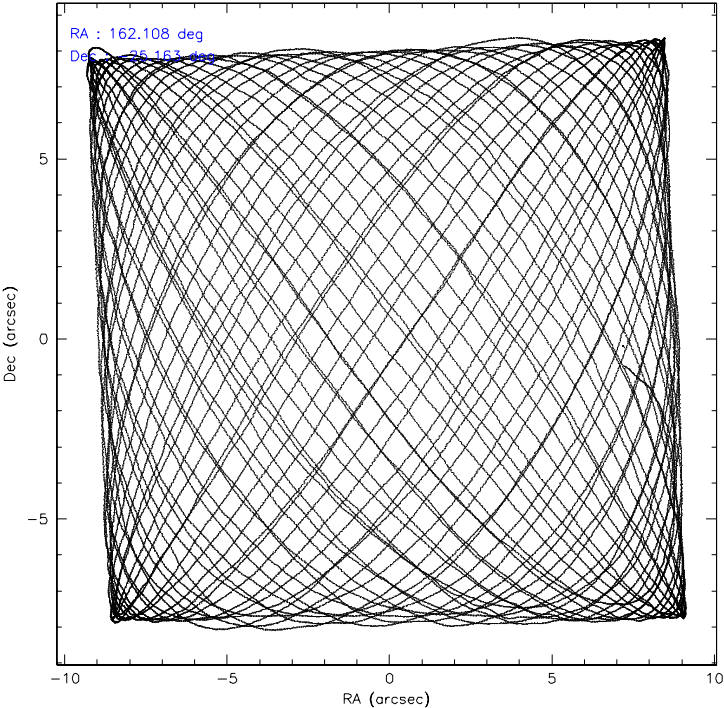
	ccd 2	ccd 3	ccd 5	ccd 6	ccd 7	ccd 8
level 1 events	194227	186431	323550	193834	267460	244043
rejected events	171565	164099	172153	171017	163589	192188
rejected %	88%	88%	53%	88%	61%	78%

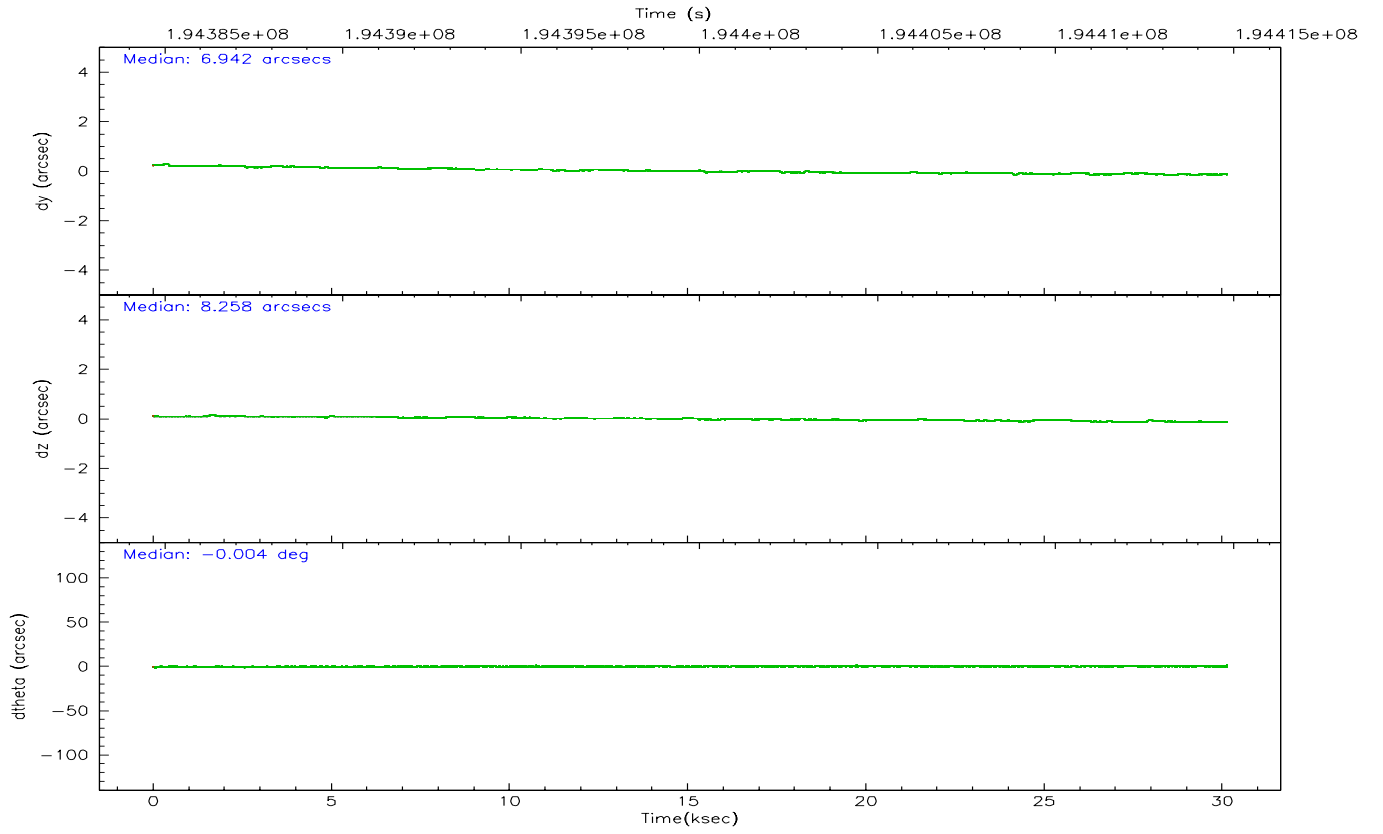
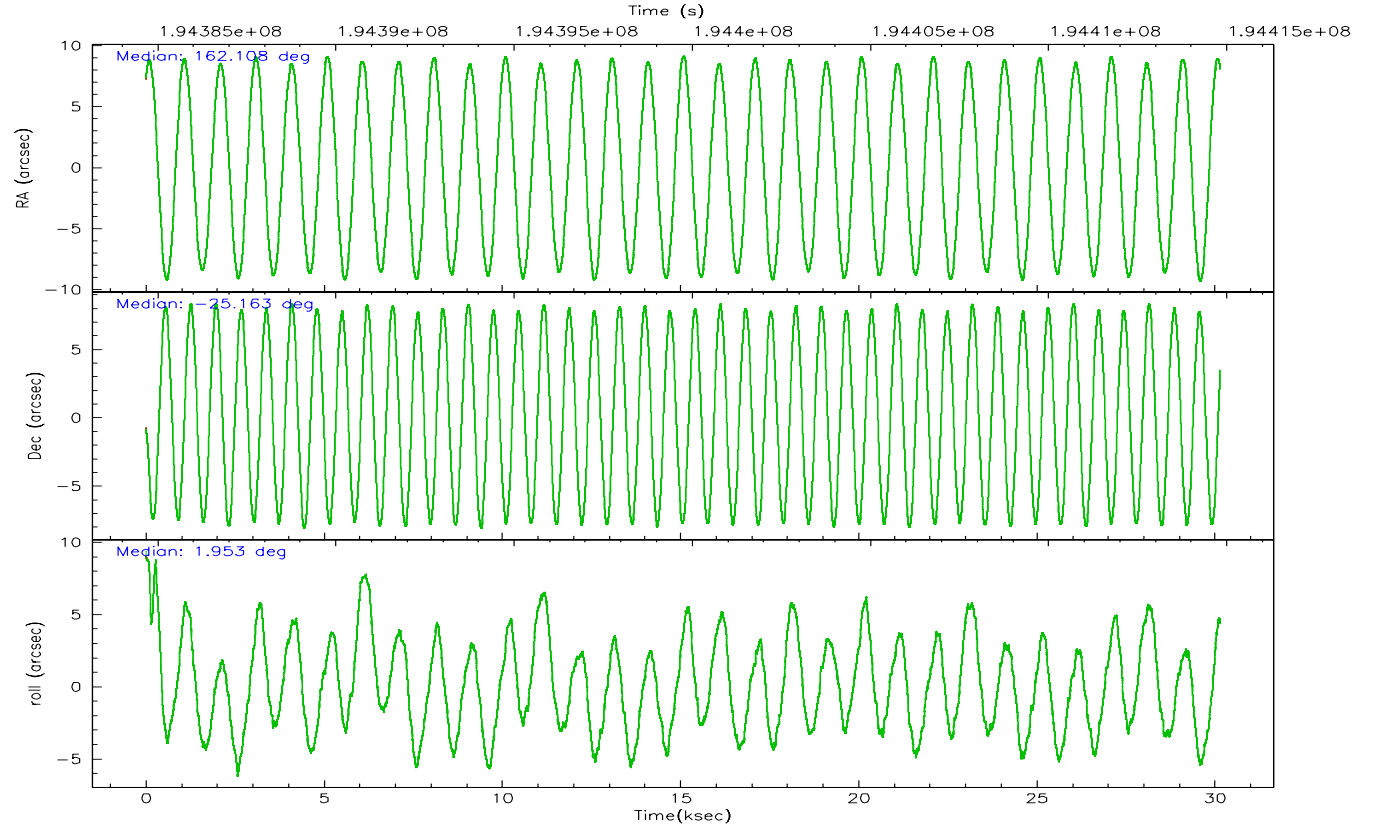
	ccd 2	ccd 3	ccd 5	ccd 6	ccd 7	ccd 8
grade 0 events	9858	9815	30966	8951	6780	16425
	5%	5%	9%	4%	2%	6%
grade 1 events	100	123	467	96	147	144
	0%	0%	0%	0%	0%	0%
grade 2 events	4573	4266	39826	4804	25571	11310
	2%	2%	12%	2%	9%	4%
grade 3 events	2206	2131	3026	2165	5384	5426
	1%	1%	0%	1%	2%	2%
grade 4 events	2122	2196	2815	2187	5349	5163
	1%	1%	0%	1%	1%	2%
grade 5 events	7636	8537	17119	8711	17047	11695
	3%	4%	5%	4%	6%	4%
grade 6 events	3914	3931	74795	4718	60801	13539
	2%	2%	23%	2%	22%	5%
grade 7 events	163818	155432	154536	162202	146381	180341
	84%	83%	47%	83%	54%	73%

## 2.2 Compared Parameters

Parameter	Planned	Actual	Parameter	Planned	Actual
Instrument	ACIS	ACIS	Obspar format version number	6	6
Detector	ACIS-235678	ACIS-235678	Obspar file type	PREDICTED	ACTUAL
Grating	NONE	NONE	Obspar update status	NONE	UPDATED
Data mode	FAINT	FAINT	On-chip summing requested	N	N
Observation mode	POINTING	POINTING	Subarray requested	NONE	NONE
Pointing RA	162.082768	162.1080678895244	Alternating exposures requested	N	N
Pointing Dec	-25.178042	-25.16332197777216	Primary exposure time	0.000000	3.2
Pointing Roll	1.797708	1.965092924942435			
SIM focus pos (mm)	-0.684267	-0.6828225247311905			
SIM defocus (mm)	0	0.001444936568705701			
SIM translation stage pos (mm)	-190.132523	-190.1425803651734			
SIM translation stage offset (mm)	0	0.01005778216563158			
Observation start time	194384856.184000	194383534.50732			
Observation start date	2004-02-28T19:46:32	2004-02-28T19:25:34			
Observation end time	194414814.184000	194415128.5962			
Observation end date	2004-02-29T04:05:50	2004-02-29T04:12:08			
Read mode	TIMED	TIMED			

## 2.3 Aspect





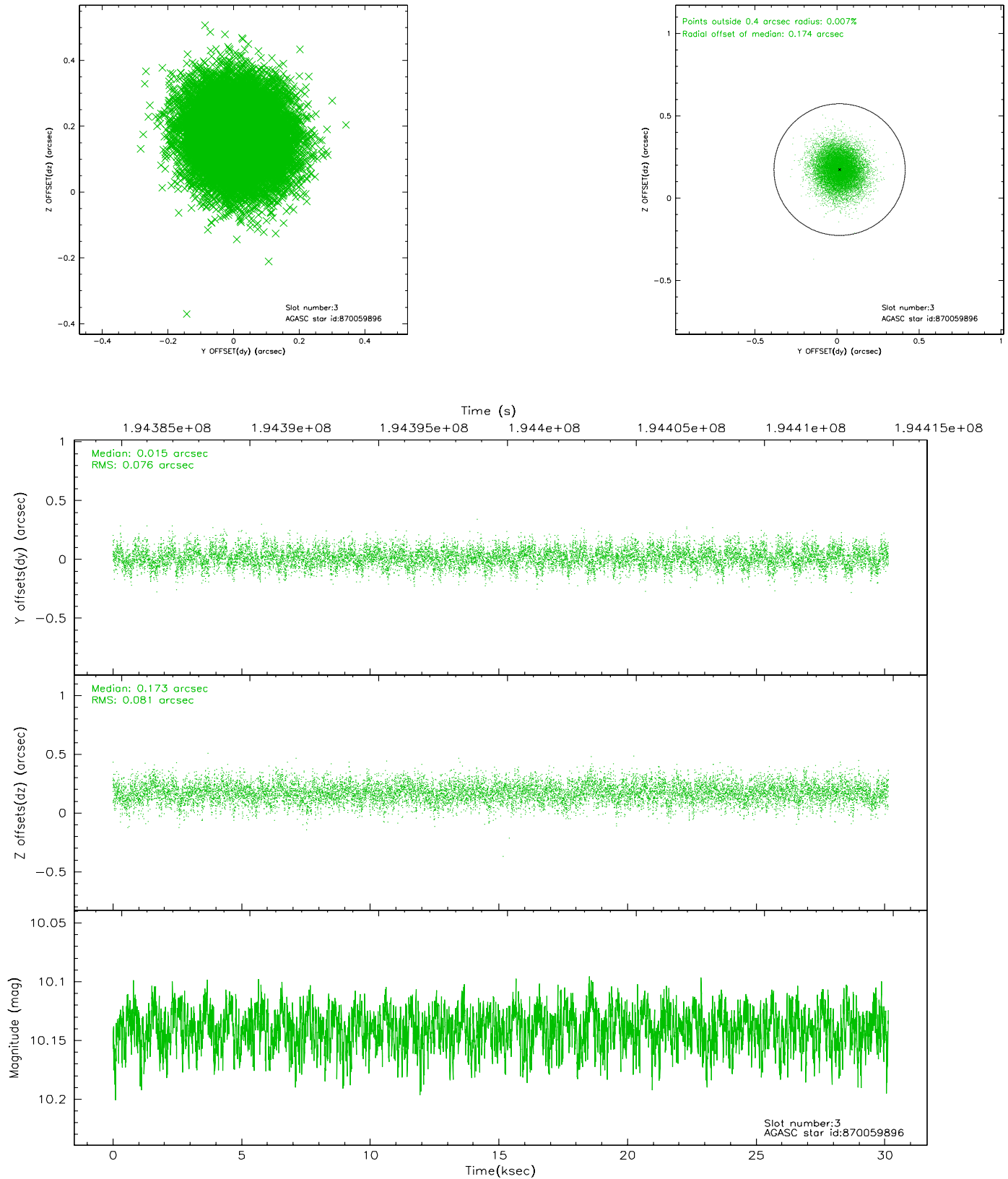
### Slot Statistics

slot	status	id	mag	n_pts	med_dy	med_dz	dr1	dr2	ra	dec	mean_y	mean_z
0	FID	ACIS-S-2	7.10	7353	-0.004	-0.012	0.007	0.011	0.000000	0.000000	-759.73	-1729.41
1	FID	ACIS-S-4	7.20	7353	0.005	0.005	0.006	0.011	0.000000	0.000000	2153.54	178.99
2	FID	ACIS-S-5	7.23	7353	-0.032	0.015	0.007	0.012	0.000000	0.000000	-1812.49	172.79
3	GUIDE	870059896	10.14	14691	0.015	0.173	0.119	0.194	161.813185	-25.464952	-907.87	-1005.49
4	GUIDE	870060416	9.35	14630	-0.007	-0.124	0.102	0.164	162.151228	-25.161120	225.11	53.82
5	GUIDE	870062672	9.87	14695	-0.079	0.130	0.109	0.176	162.548898	-25.328477	1499.20	-590.75
6	GUIDE	870063952	8.34	14702	0.024	-0.139	0.067	0.108	161.785917	-24.549213	-900.89	2291.94
7	GUIDE	870065008	9.02	14700	0.047	-0.042	0.077	0.124	161.653761	-24.585489	-1337.71	2173.63

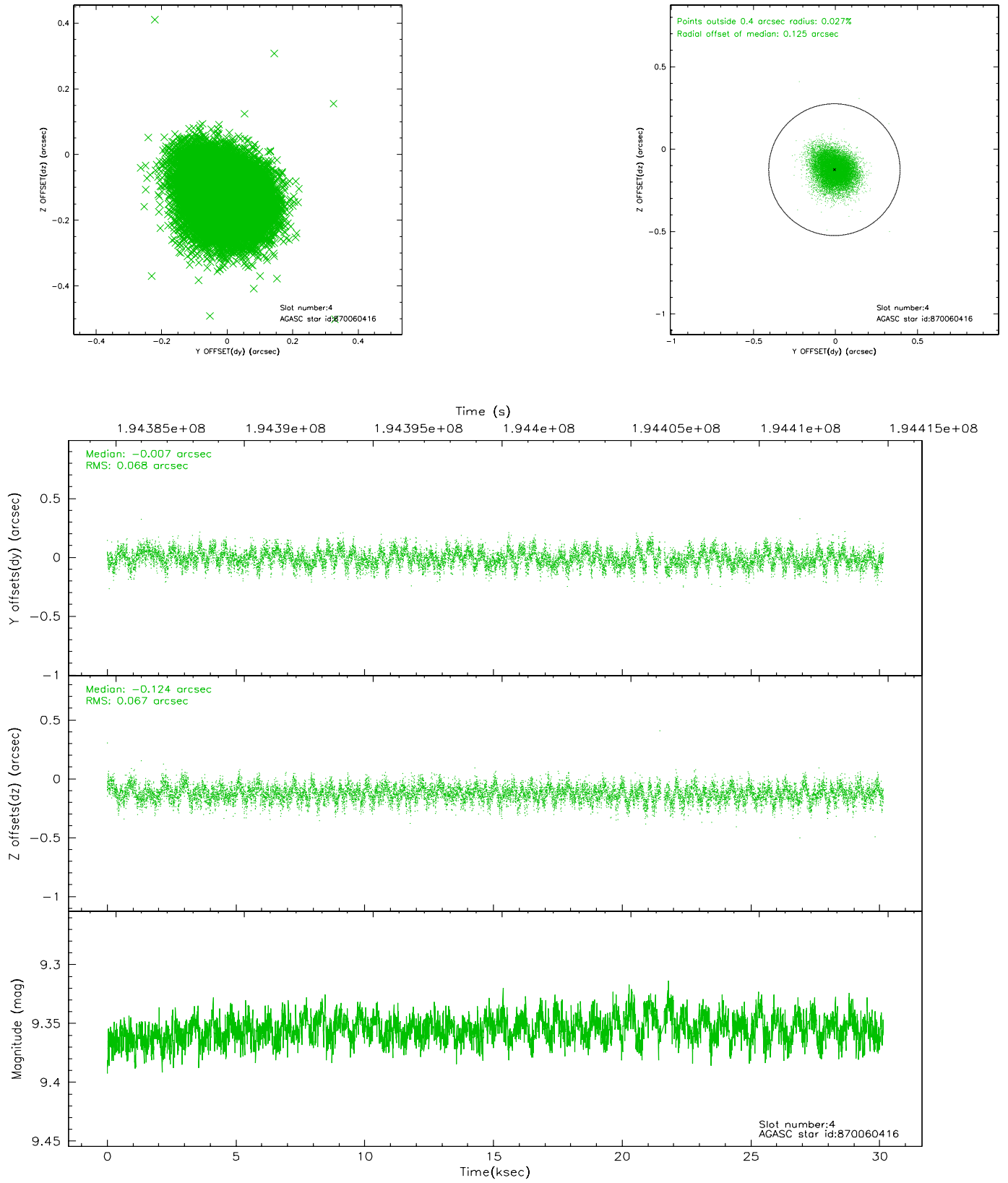


## 2.4 Star Slots

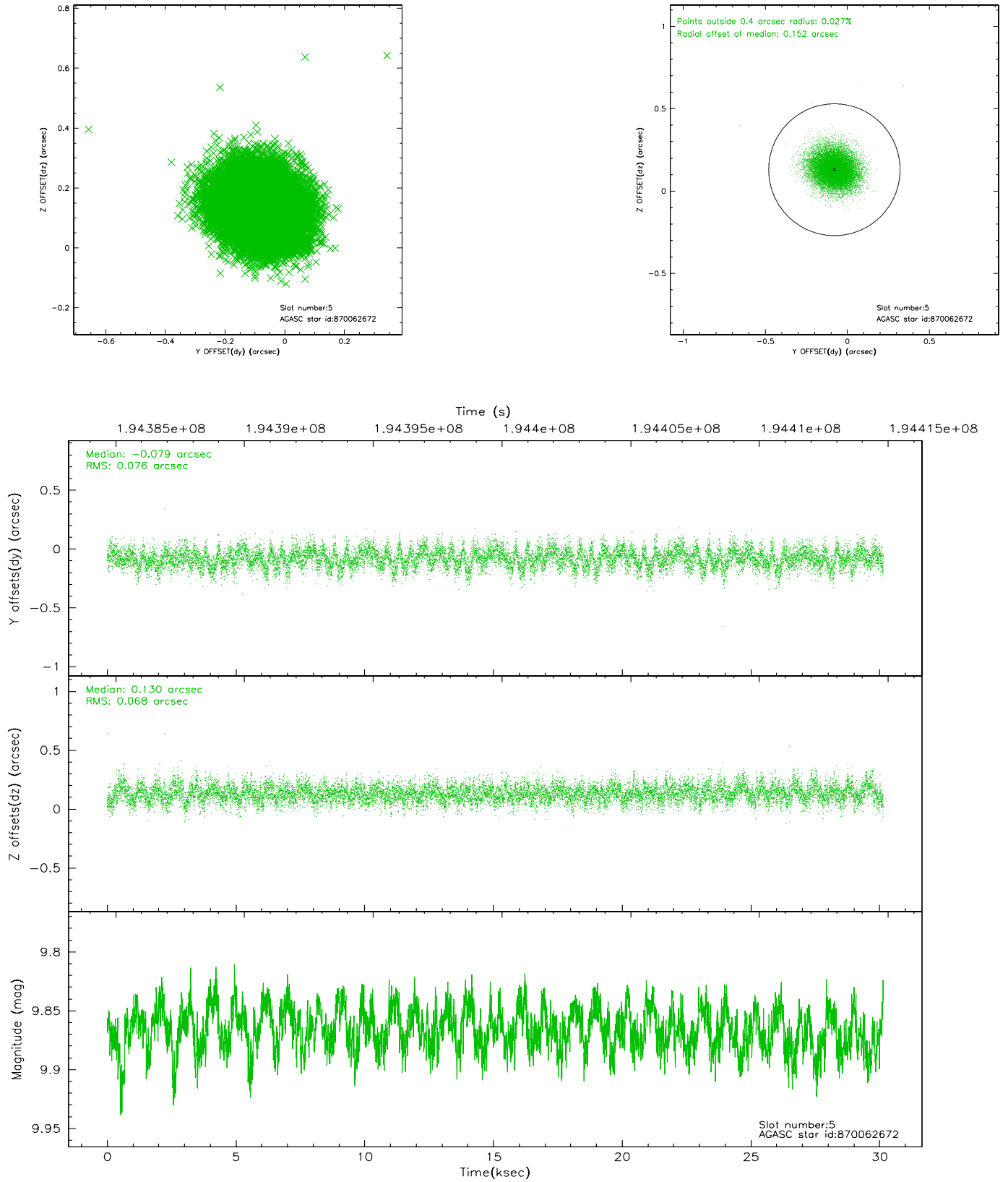
### 2.4.1 Slot 3



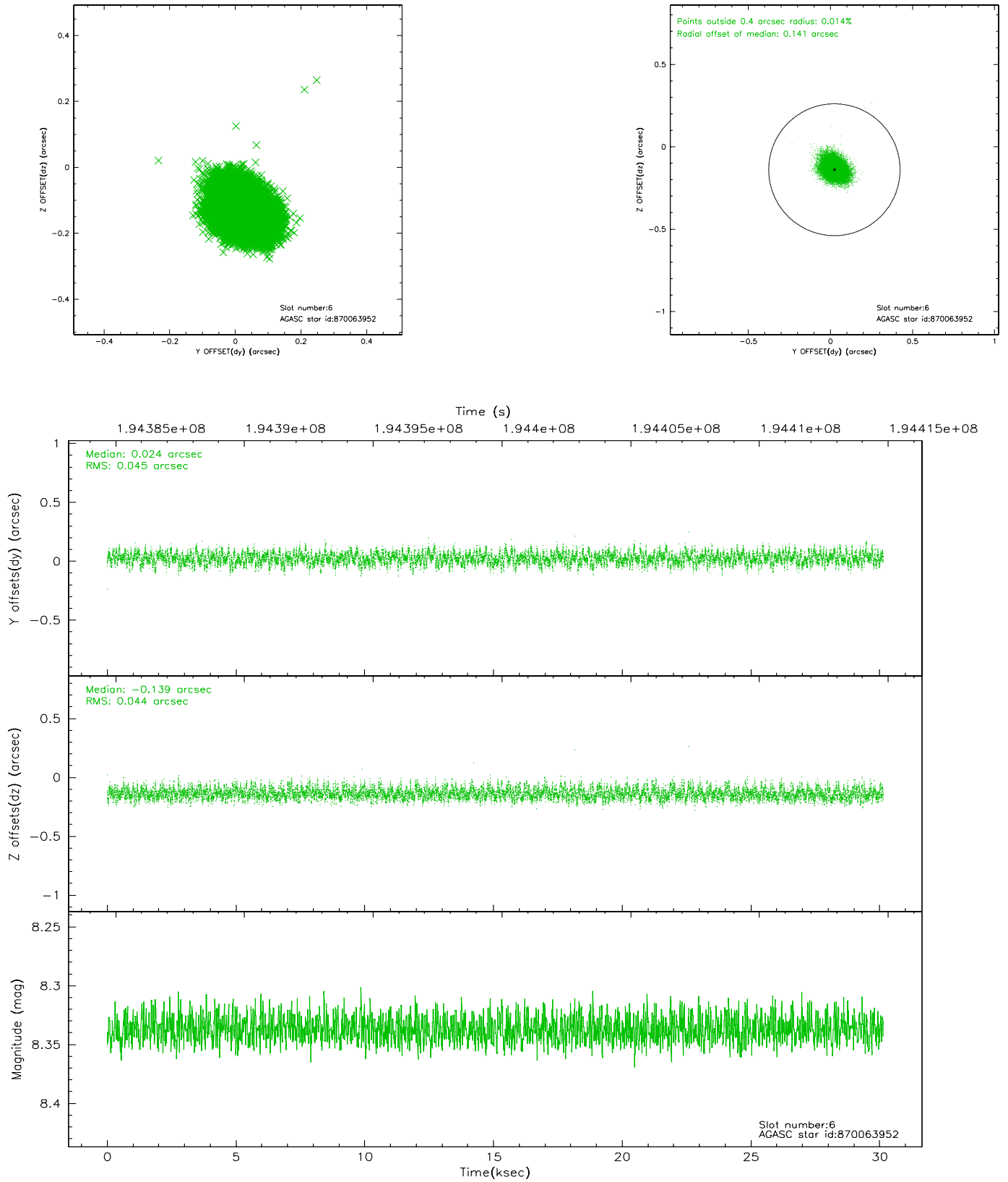
## 2.4.2 Slot 4



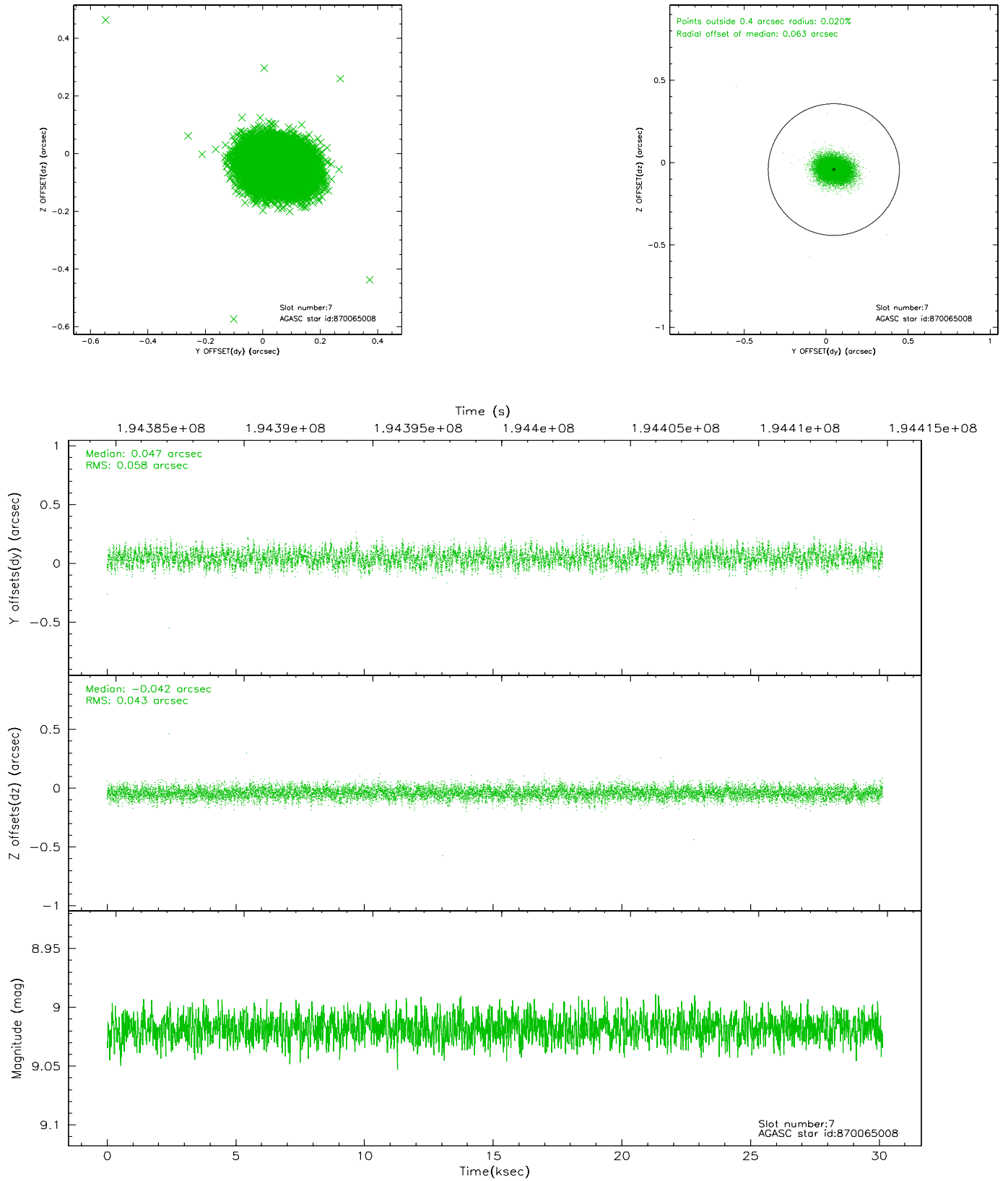
### 2.4.3 Slot 5



## 2.4.4 Slot 6

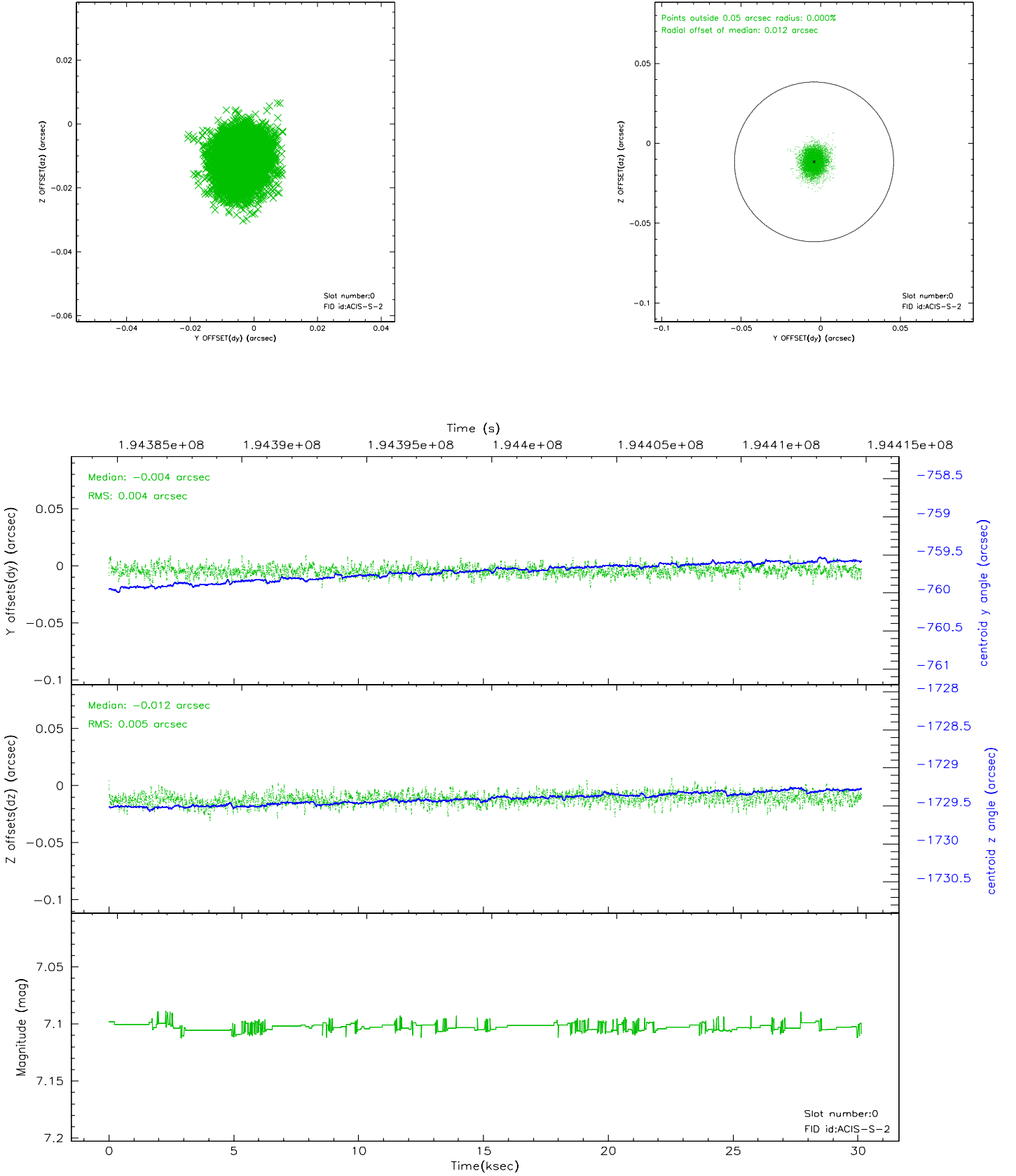


## 2.4.5 Slot 7

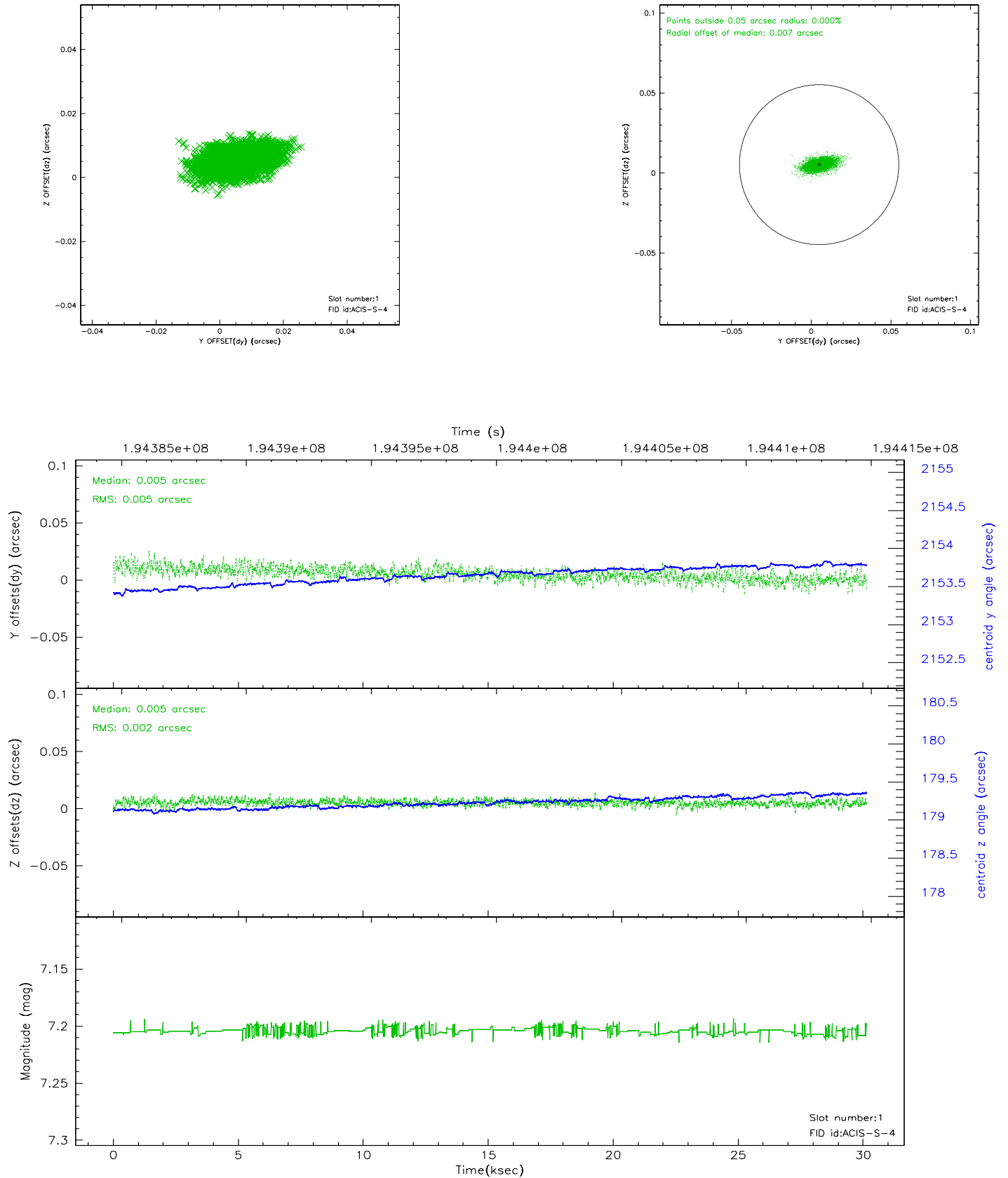


## 2.5 FID Slots

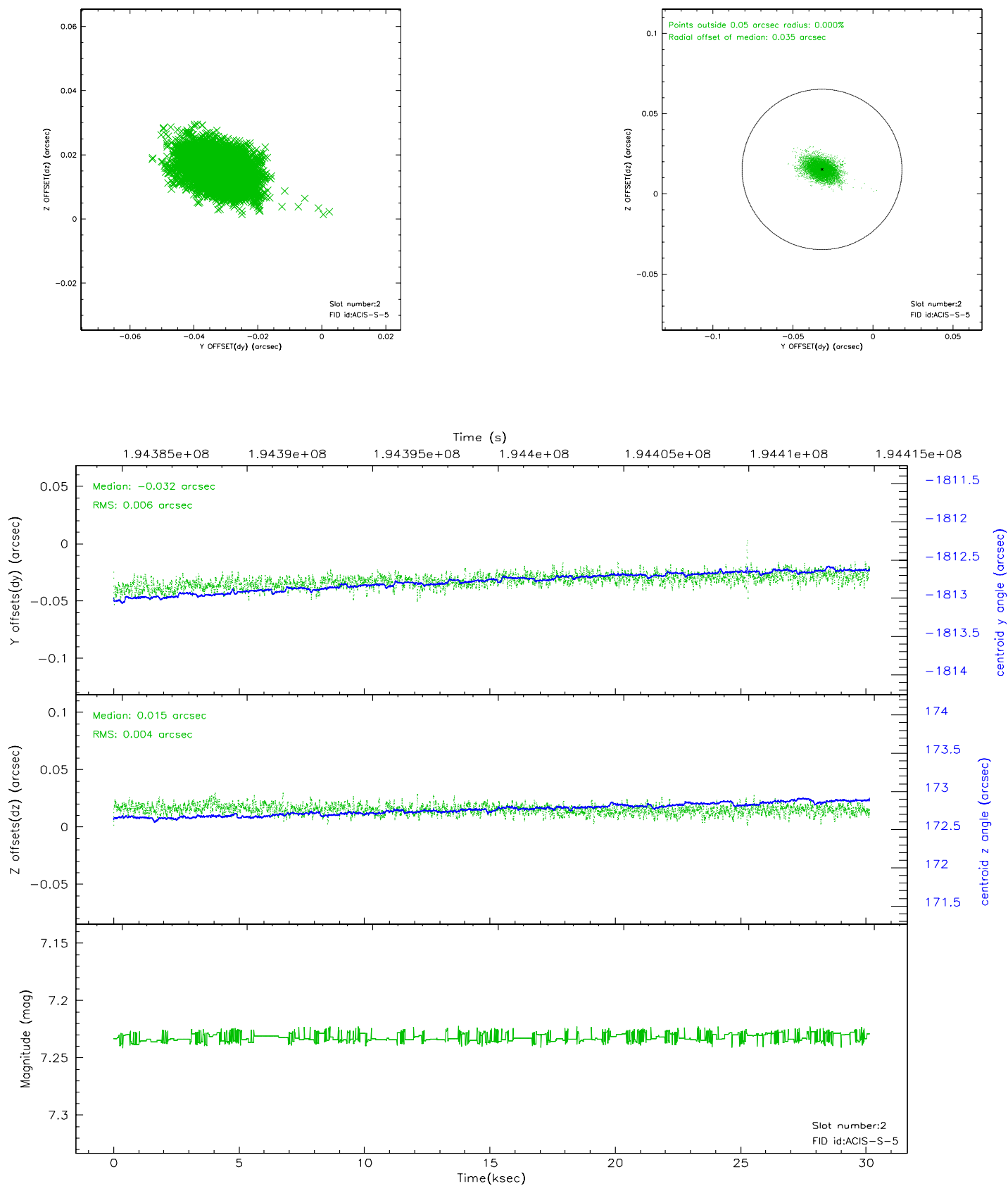
### 2.5.1 Slot 0



## 2.5.2 Slot 1

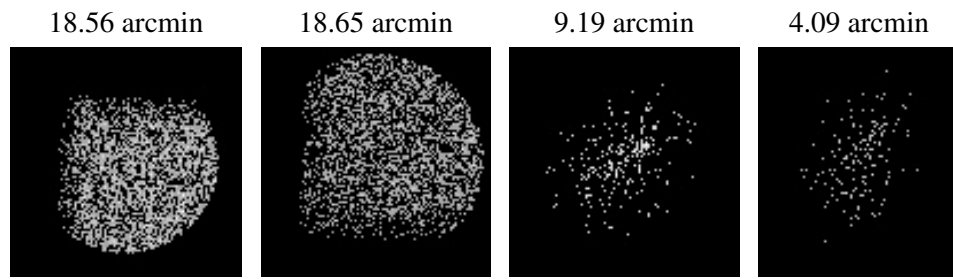


### 2.5.3 Slot 2





### 3 Point Sources



## A Summary

### A.1 Status

V&V Scientist	Jen Lauer
V&V Date (YYYY-MM-DD)	2006.05.31
V&V Edition	1
V&V Disposition and Status	OK
V&V Charge Time	29.711

### A.2 Comments