

# V&V Reference Report

## L2 ASCDS Version : 7.6.7.2

Observation 4859 - L2 Version 001  
Chandra X-Ray Center

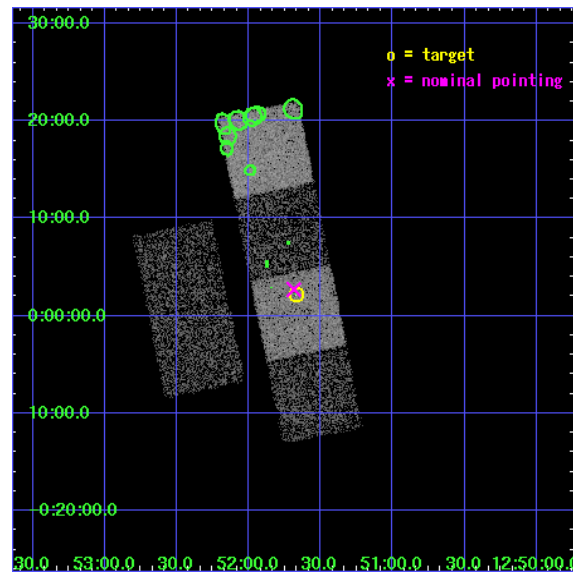
L2 Processing Date : May 31 2006

## Contents

<b>1</b>	<b>Front</b>	<b>2</b>
<b>2</b>	<b>OBI</b>	<b>3</b>
2.1	OBI . . . . .	3
2.1.1	Images . . . . .	3
2.1.2	Bias . . . . .	3
2.1.3	Parameters . . . . .	4
2.1.4	Events . . . . .	4
2.2	Compared Parameters . . . . .	5
2.3	Aspect . . . . .	6
2.4	Star Slots . . . . .	9
2.4.1	Slot 3 . . . . .	9
2.4.2	Slot 4 . . . . .	10
2.4.3	Slot 5 . . . . .	11
2.4.4	Slot 6 . . . . .	12
2.4.5	Slot 7 . . . . .	13
2.5	FID Slots . . . . .	14
2.5.1	Slot 0 . . . . .	14
2.5.2	Slot 1 . . . . .	15
2.5.3	Slot 2 . . . . .	16
<b>3</b>	<b>Point Sources</b>	<b>17</b>
<b>A</b>	<b>Summary</b>	<b>18</b>
A.1	Status . . . . .	18
A.2	Comments . . . . .	18

# 1 Front

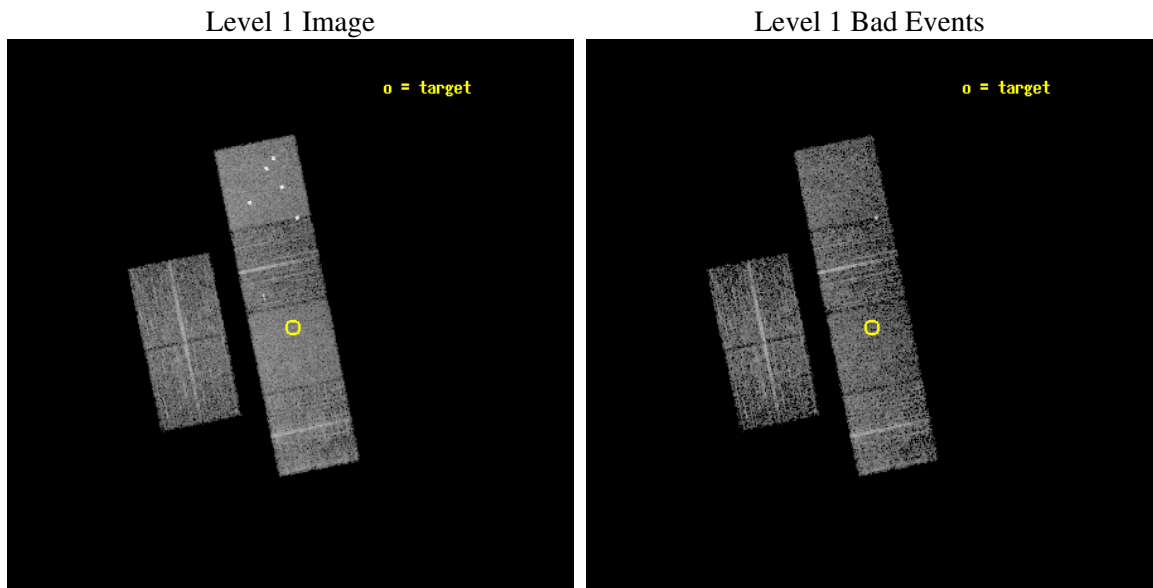
seq_num	700941
obs_id	4859
title	X-ray Properties of Dust Reddened Quasars from the Sloan Digital Sky Survey
observer	Gordon Richards
object	SDSS J125140.33+000210.8
dtcycle	0
cycle	P
ra_targ	192.917917
dec_targ	0.036333
ra_nom	192.92144644525
dec_nom	0.045216144556069
roll_nom	78.501744669162
revision	2
ontime	4092.7999847531
livetime	4040.9744869579
ontime2	4092.7999847531
ontime3	4092.7999847531
ontime5	4092.7999847531
ontime6	4092.7999847531
ontime7	4092.7999847531
ontime8	4092.7999847531
l2events	43227



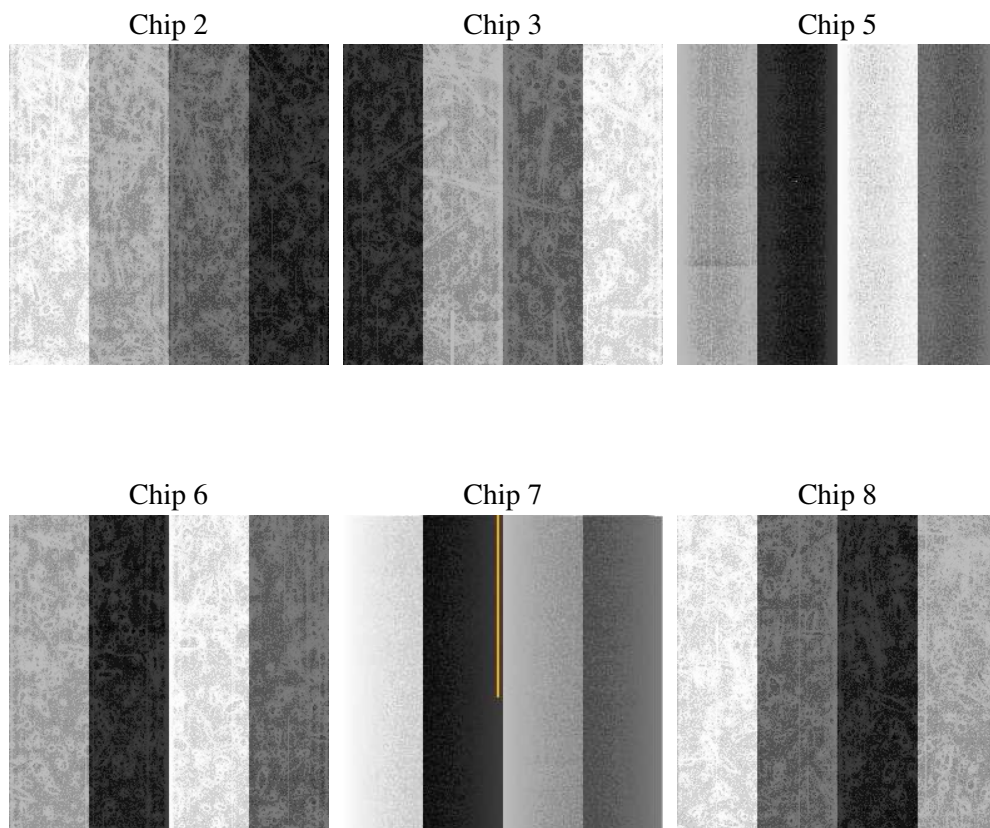
## 2 OBI

### 2.1 OBI

#### 2.1.1 Images



#### 2.1.2 Bias



### 2.1.3 Parameters

obi_num	0
ascdsver	7.6.7.2
caldsver	3.2.2
date	2006-05-31T13:34:44
revision	2

sched_exp_time	4130.996000
ontime	4096.6338397861
ontime2	4096.6338198781
ontime3	4096.6338198781
ontime5	4096.6338198781
ontime6	4096.6338198781
ontime7	4096.6338397861
ontime8	4096.6338198781
l1events	202523

### 2.1.4 Events

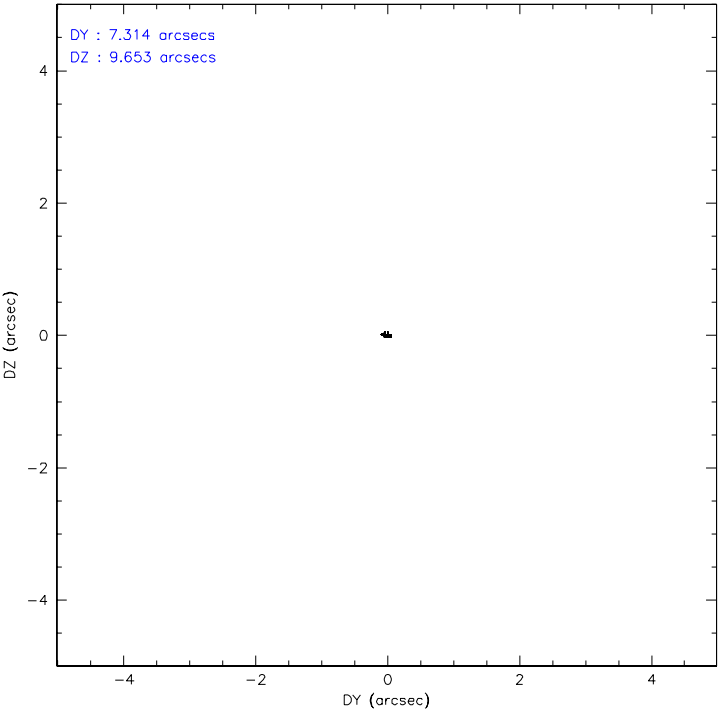
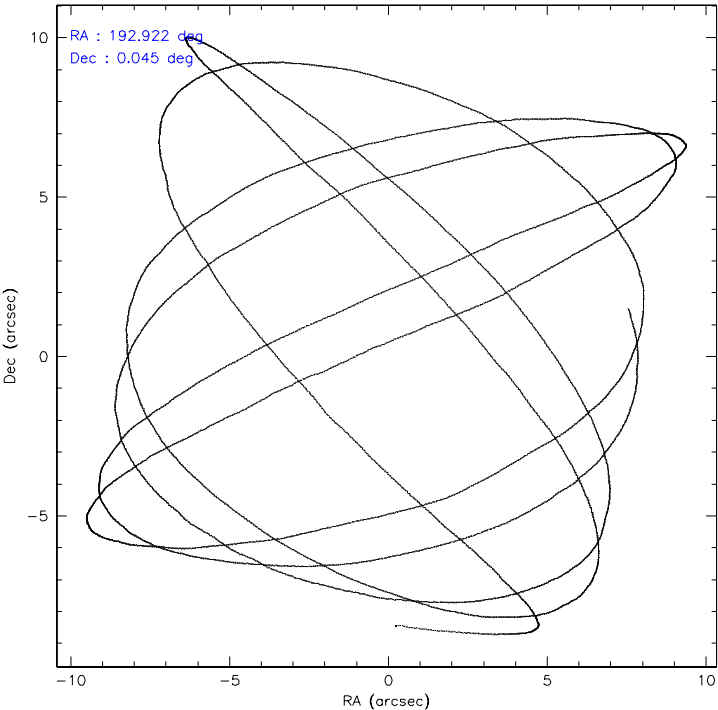
	ccd 2	ccd 3	ccd 5	ccd 6	ccd 7	ccd 8
level 1 events	28042	27130	46301	28063	37531	35456
rejected events	24839	23836	23283	24309	23334	28611
rejected %	88%	87%	50%	86%	62%	80%

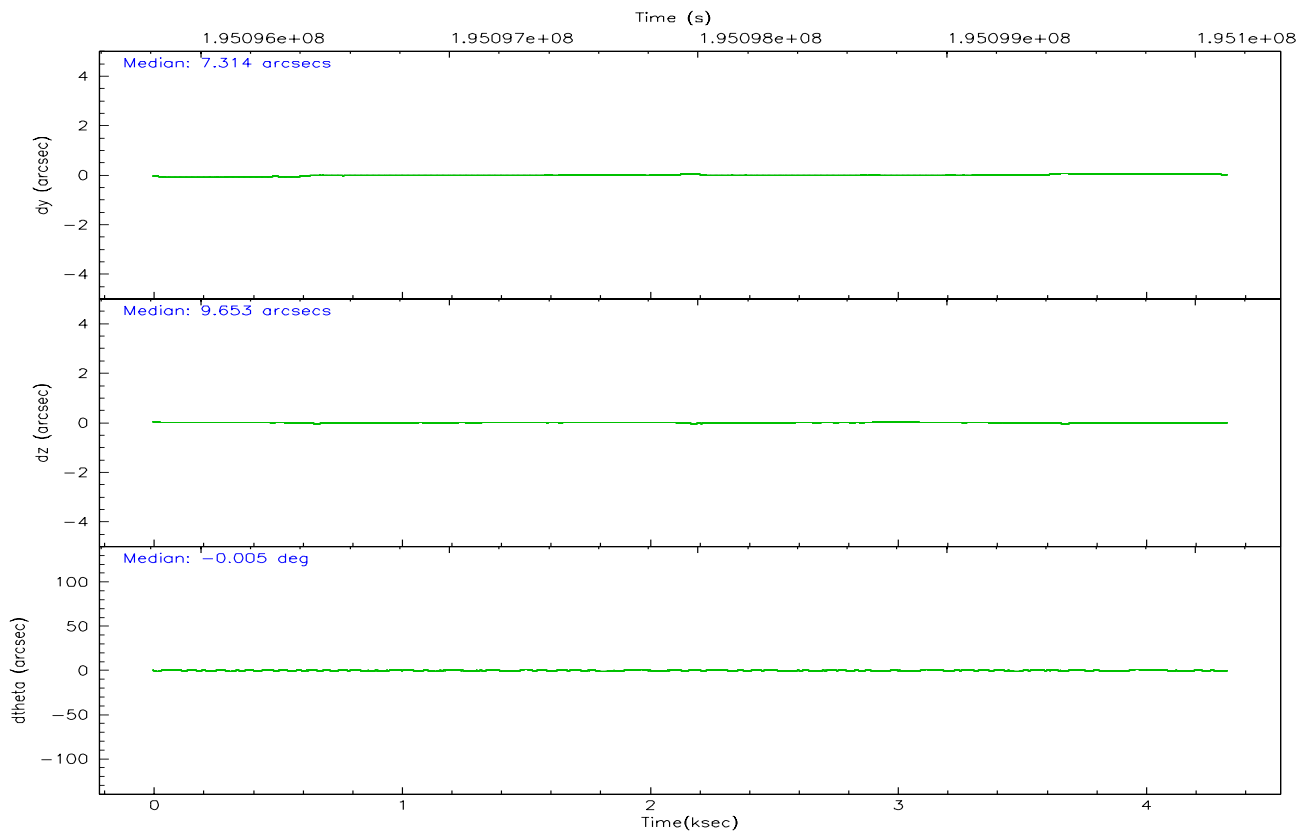
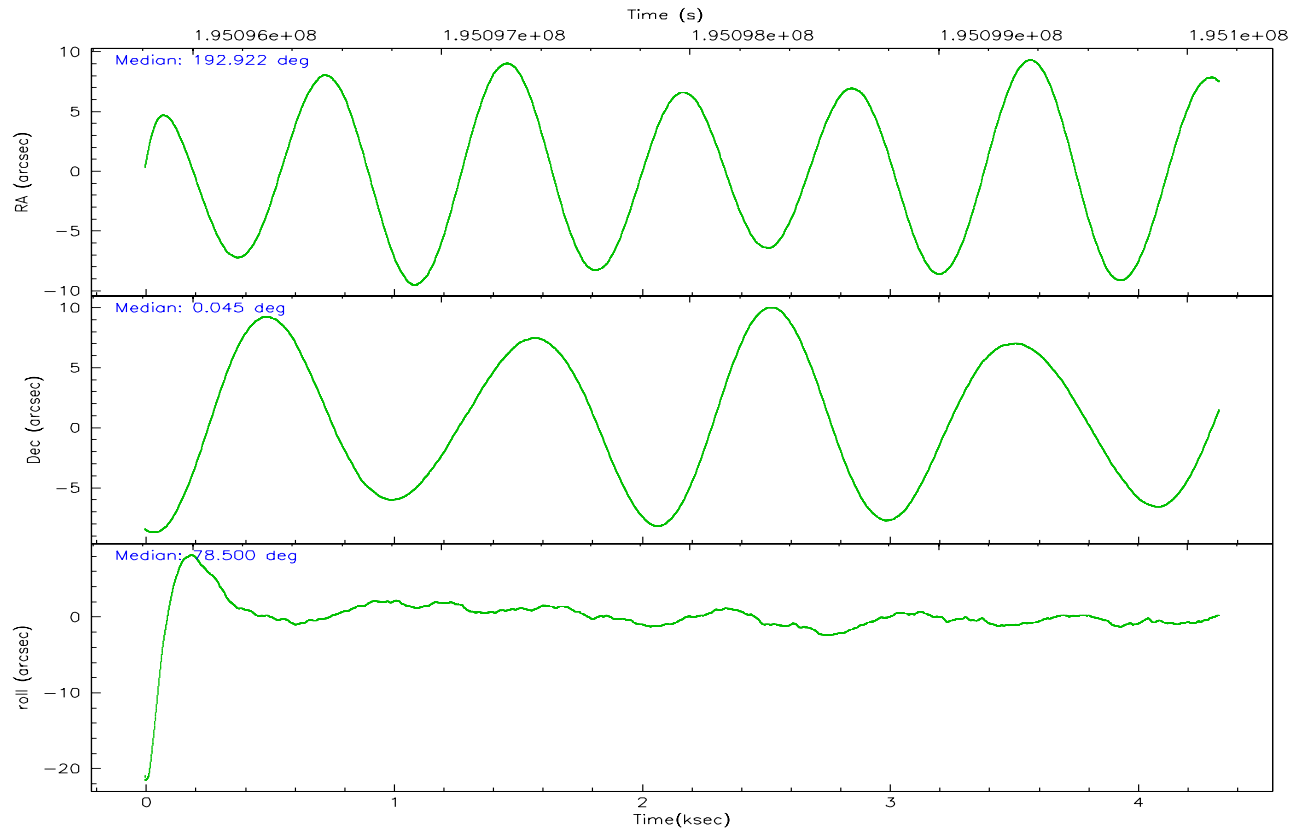
	ccd 2	ccd 3	ccd 5	ccd 6	ccd 7	ccd 8
grade 0 events	1410	1450	5129	1675	848	2237
	5%	5%	11%	5%	2%	6%
grade 1 events	15	18	166	26	17	30
	0%	0%	0%	0%	0%	0%
grade 2 events	643	643	6206	771	3534	1500
	2%	2%	13%	2%	9%	4%
grade 3 events	305	328	596	318	705	740
	1%	1%	1%	1%	1%	2%
grade 4 events	316	311	437	320	704	580
	1%	1%	0%	1%	1%	1%
grade 5 events	1042	1216	2091	1254	2510	1756
	3%	4%	4%	4%	6%	4%
grade 6 events	536	568	10697	675	8427	1792
	1%	2%	23%	2%	22%	5%
grade 7 events	23775	22596	20979	23024	20786	26821
	84%	83%	45%	82%	55%	75%

## 2.2 Compared Parameters

Parameter	Planned	Actual	Parameter	Planned	Actual
Instrument	ACIS	ACIS	Obspar format version number	6	6
Detector	ACIS-235678	ACIS-235678	Obspar file type	PREDICTED	ACTUAL
Grating	NONE	NONE	Obspar update status	NONE	UPDATED
Data mode	FAINT	FAINT	On-chip summing requested	N	N
Observation mode	POINTING	POINTING	Subarray requested	NONE	NONE
Pointing RA	192.930465	192.9214464452497	Alternating exposures requested	N	N
Pointing Dec	0.019625	0.0452161445560692	Primary exposure time	0.000000	3.2
Pointing Roll	78.345176	78.50174466916155			
SIM focus pos (mm)	-0.684267	-0.6828225247311905			
SIM defocus (mm)	0	0.001444936568705701			
SIM translation stage pos (mm)	-190.132523	-190.1400660498719			
SIM translation stage offset (mm)	0	0.00754346686406393			
Observation start time	195096002.184000	195095032.13851			
Observation start date	2004-03-08T01:18:58	2004-03-08T01:03:52			
Observation end time	195100133.184000	195100447.72625			
Observation end date	2004-03-08T02:27:49	2004-03-08T02:34:07			
Read mode	TIMED	TIMED			

### 2.3 Aspect





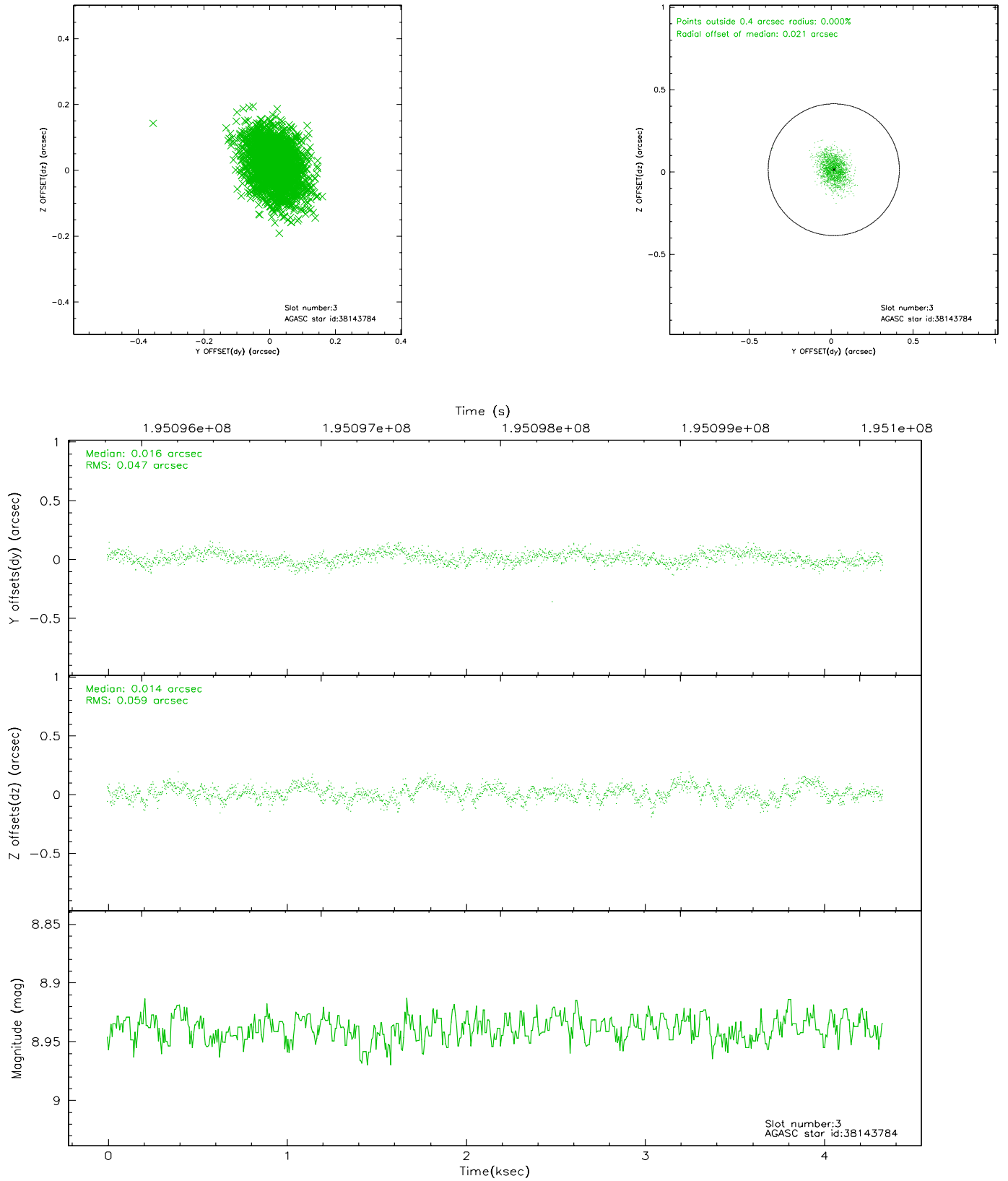
### Slot Statistics

slot	status	id	mag	n_pts	med_dy	med_dz	dr1	dr2	ra	dec	mean_y	mean_z
0	FID	ACIS-S-2	7.10	1057	-0.027	-0.002	0.007	0.012	0.000000	0.000000	-760.07	-1730.91
1	FID	ACIS-S-4	7.21	1057	0.036	0.014	0.005	0.009	0.000000	0.000000	2152.59	176.17
2	FID	ACIS-S-5	7.24	1057	-0.040	-0.003	0.007	0.011	0.000000	0.000000	-1811.12	171.38
3	GUIDE	38143784	8.94	2110	0.016	0.014	0.079	0.130	193.400187	0.111428	666.13	-1589.19
4	GUIDE	38144112	8.73	2114	-0.015	0.044	0.063	0.102	193.113721	0.229030	872.59	-494.31
5	GUIDE	38144832	8.88	2113	-0.043	0.072	0.103	0.153	193.278687	0.444835	1753.57	-918.46
6	GUIDE	38145048	8.49	2114	-0.181	-0.166	0.061	0.093	192.913004	0.496149	1668.81	407.73
7	GUIDE	648806600	9.51	2112	0.222	0.042	0.128	0.195	192.979355	-0.633994	-2267.16	-647.40

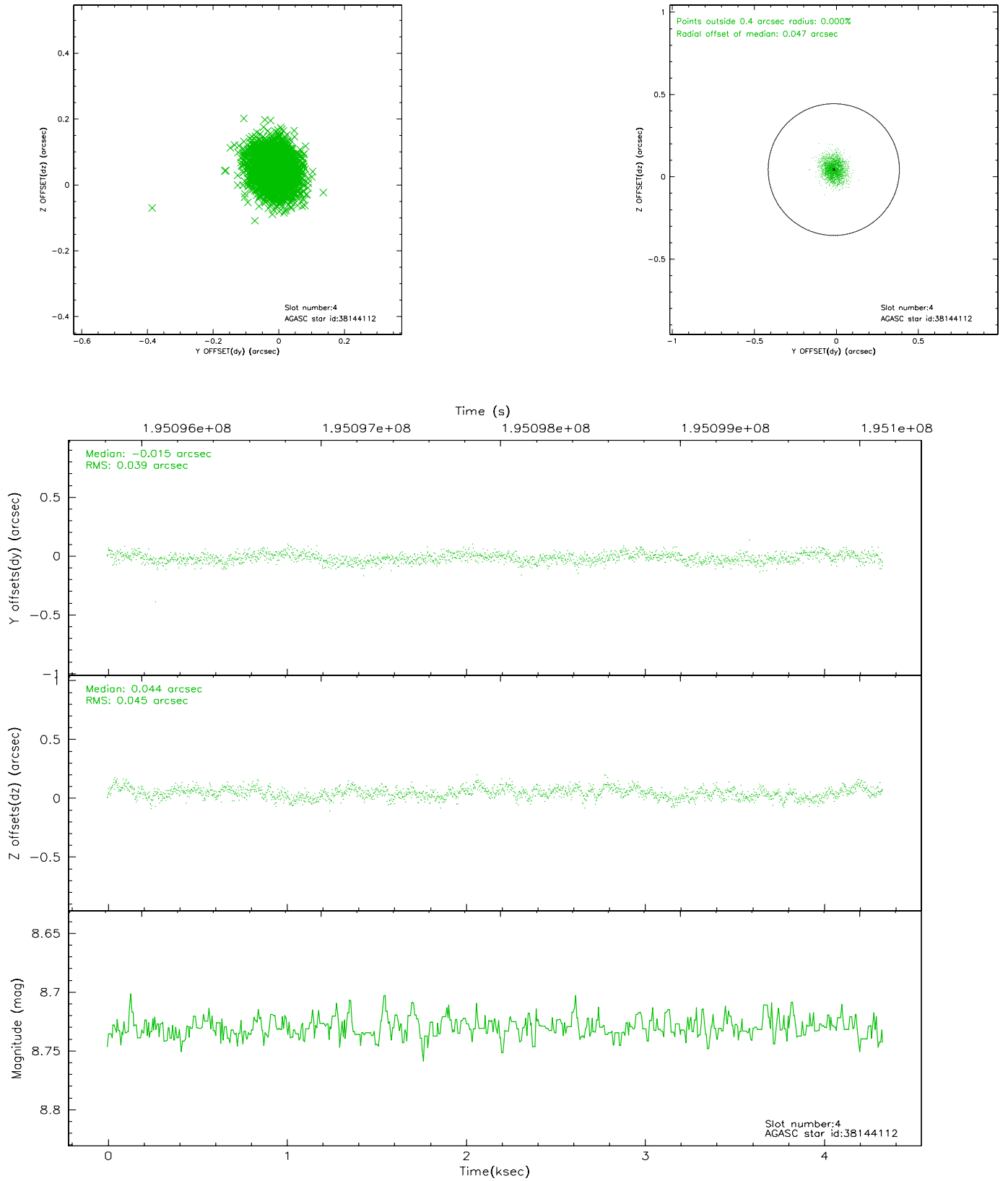


## 2.4 Star Slots

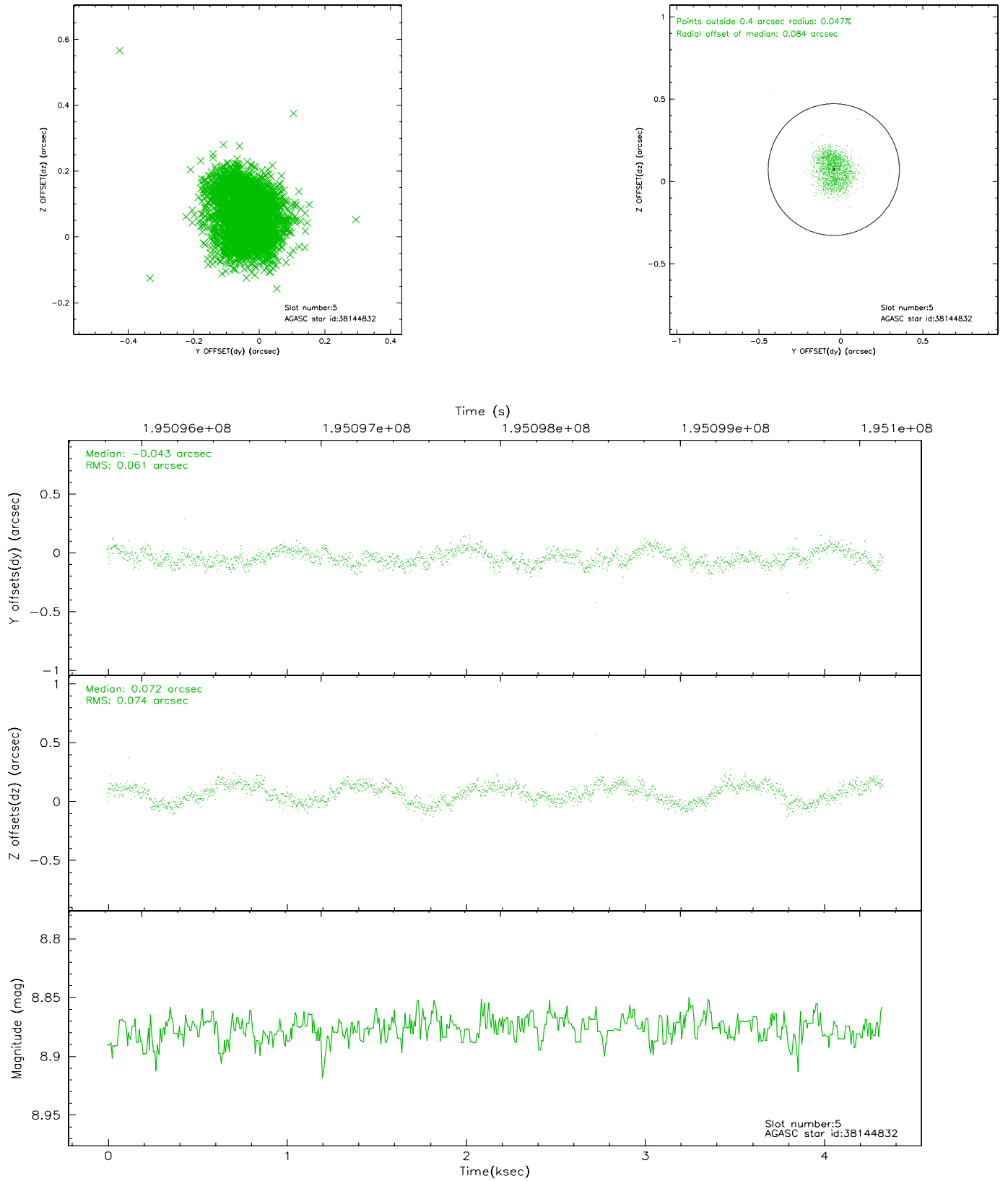
### 2.4.1 Slot 3



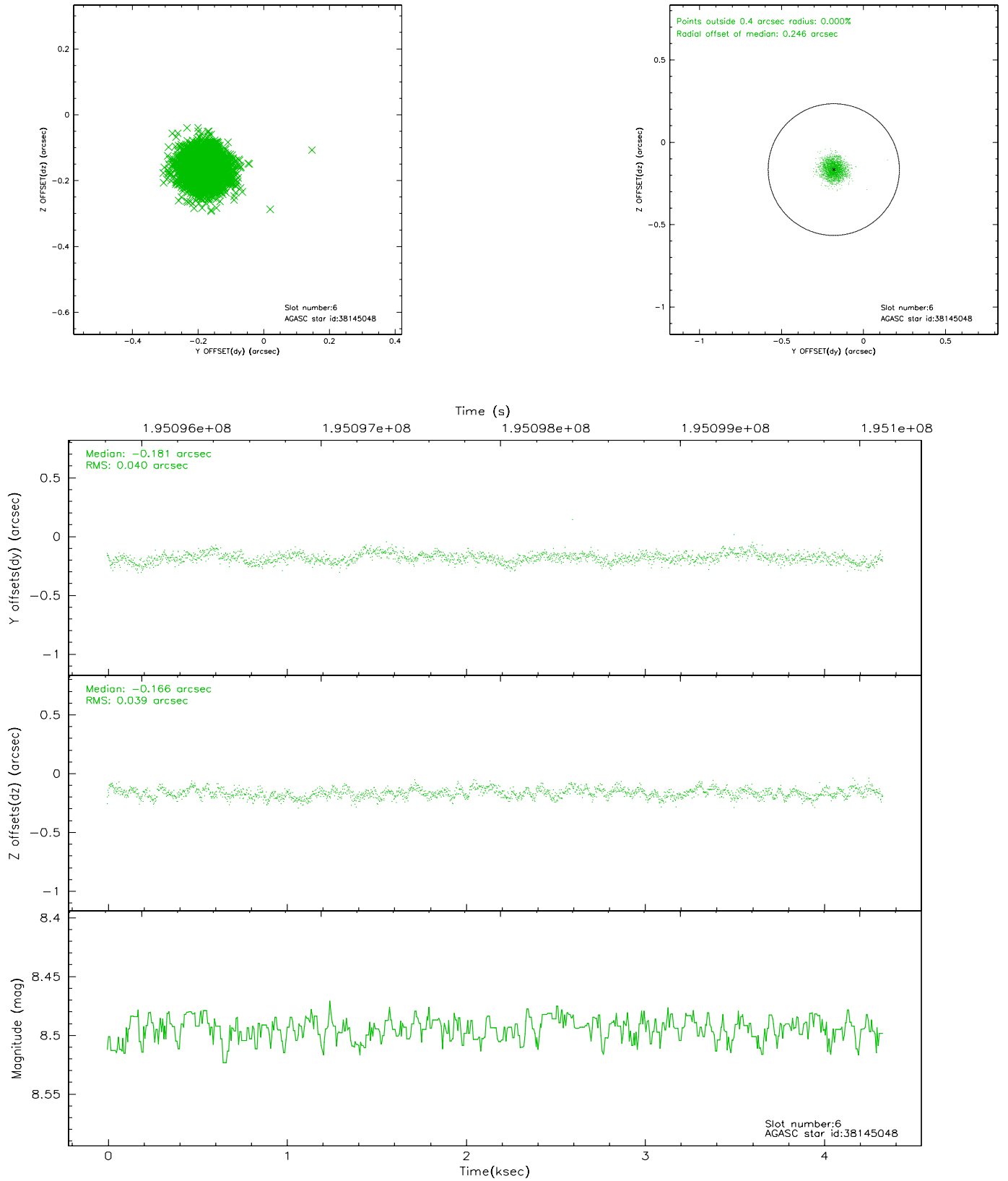
## 2.4.2 Slot 4



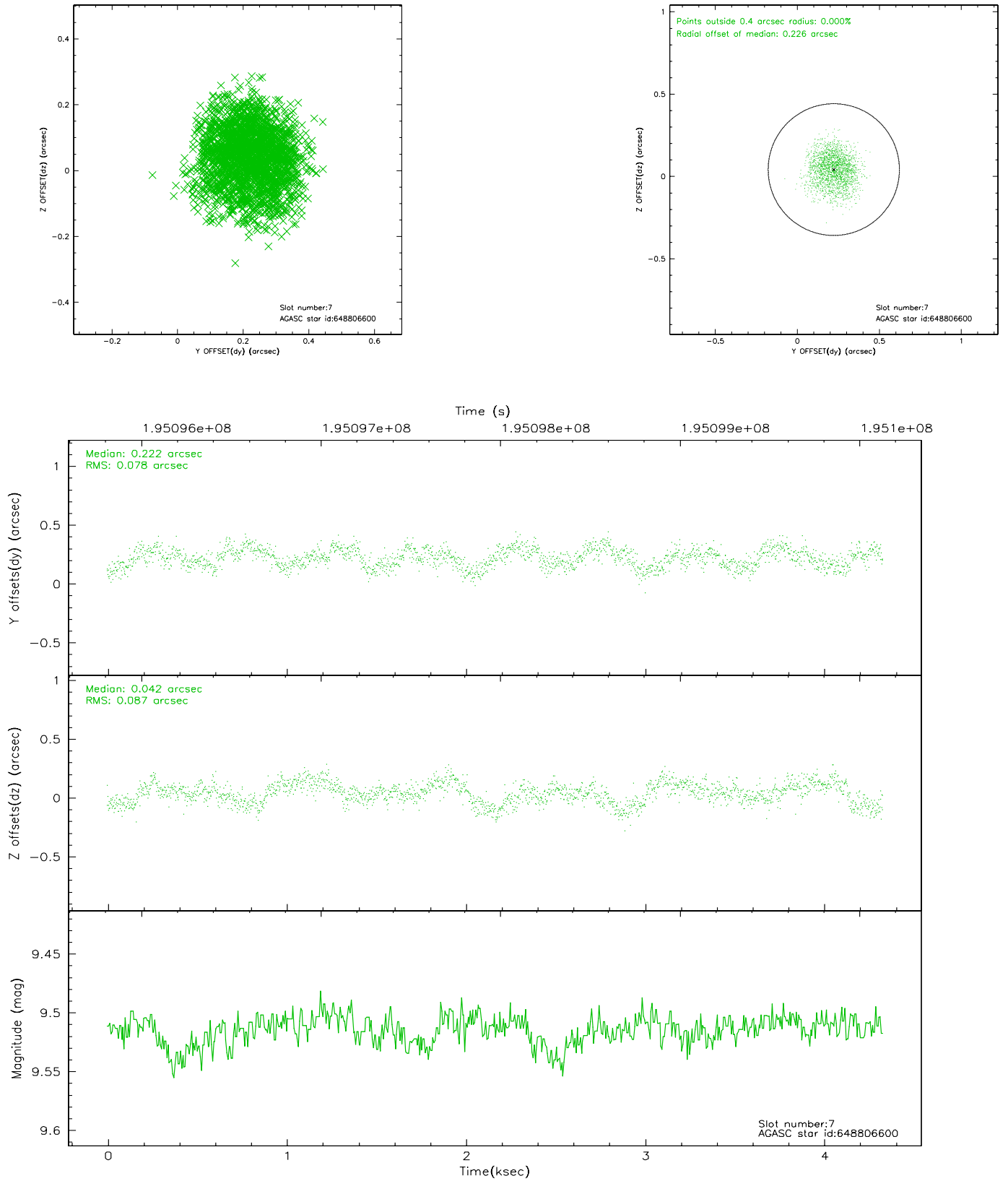
### 2.4.3 Slot 5



## 2.4.4 Slot 6

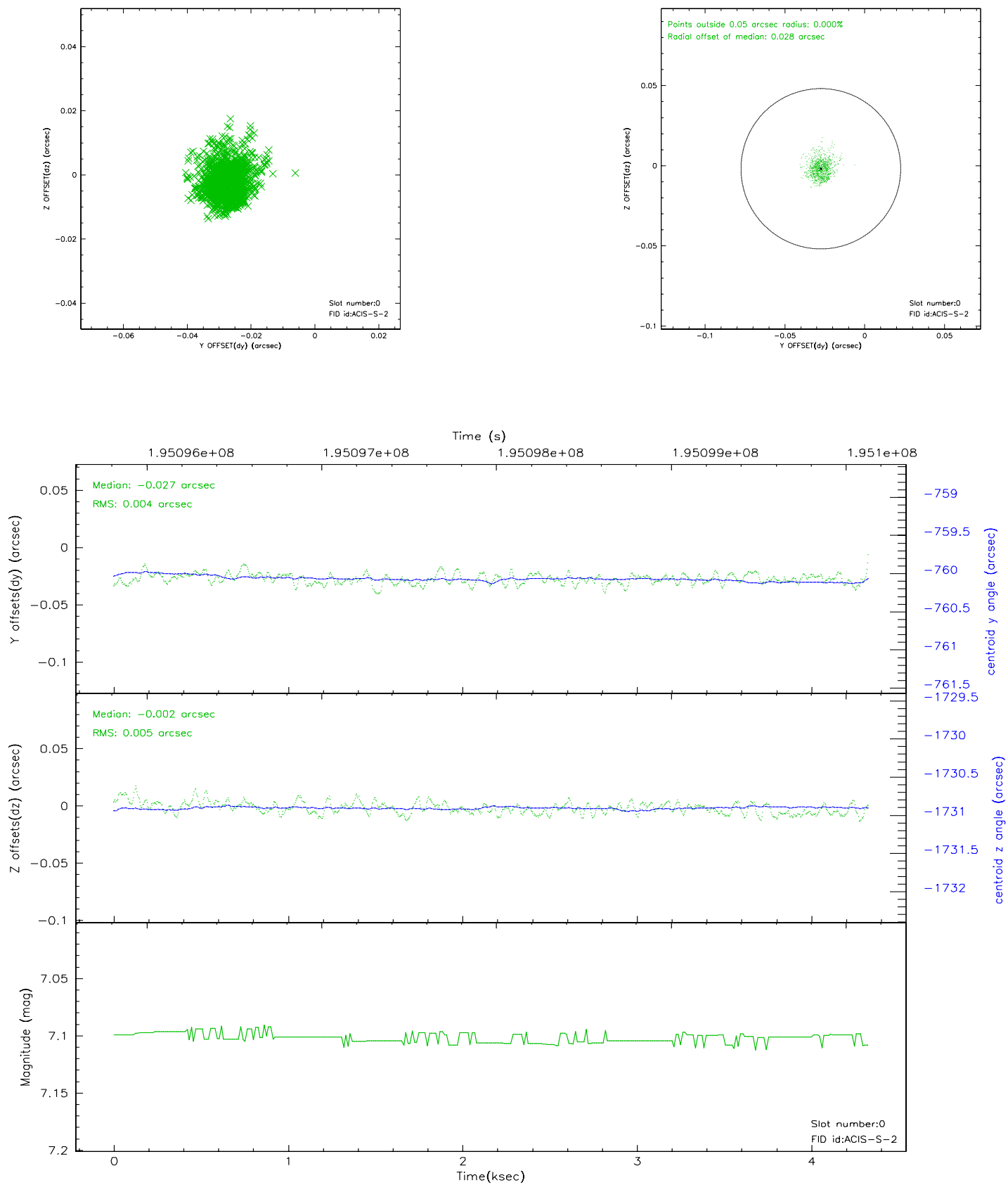


## 2.4.5 Slot 7

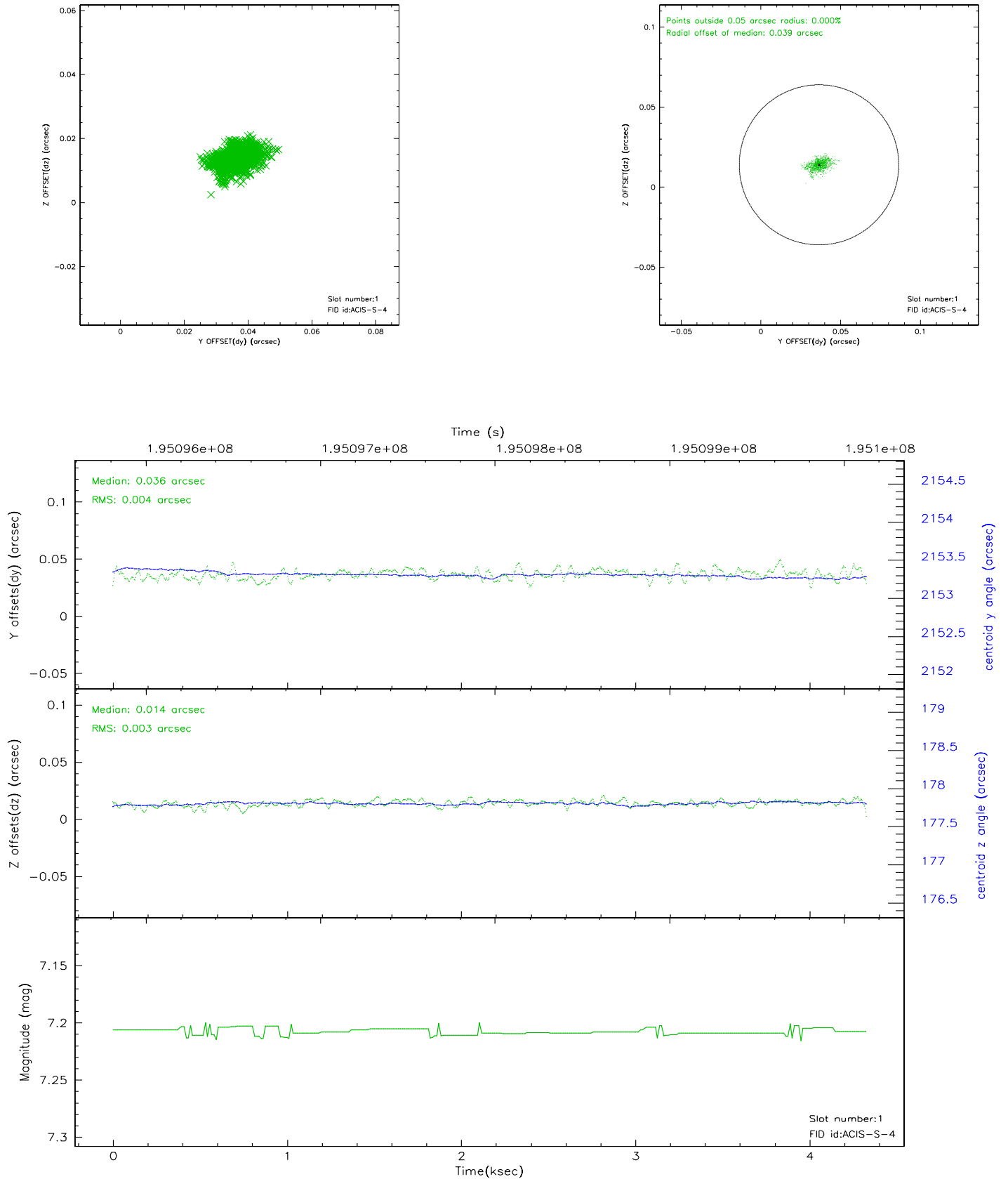


## 2.5 FID Slots

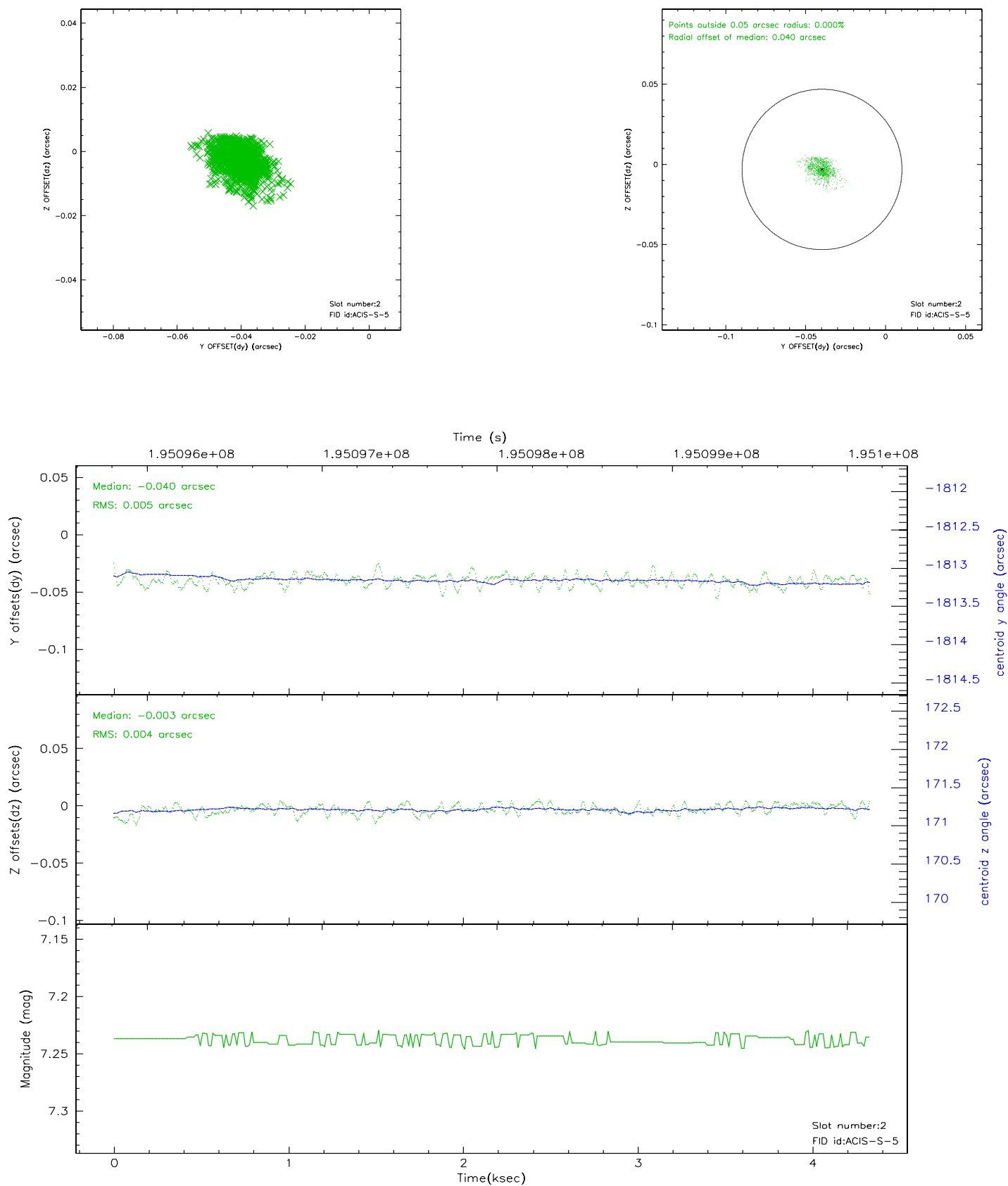
### 2.5.1 Slot 0



## 2.5.2 Slot 1

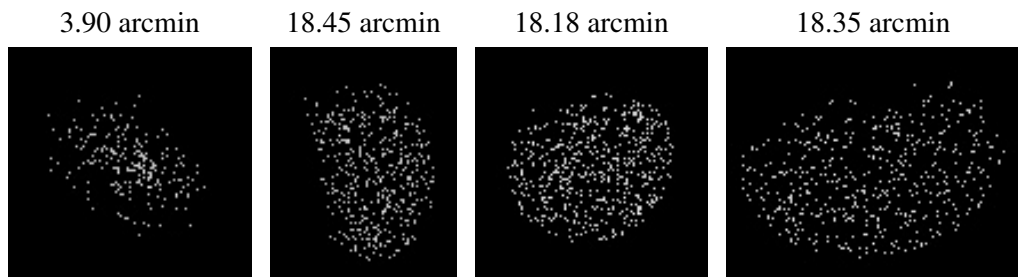


### 2.5.3 Slot 2





### 3 Point Sources



## A Summary

### A.1 Status

V&V Scientist	Jen Lauer
V&V Date (YYYY-MM-DD)	2006.05.31
V&V Edition	1
V&V Disposition and Status	OK
V&V Charge Time	4.095

### A.2 Comments