

V&V Reference Report

L2 ASCDS Version : 8.5

Observation 4848 - L2 Version 4
Chandra X-Ray Center

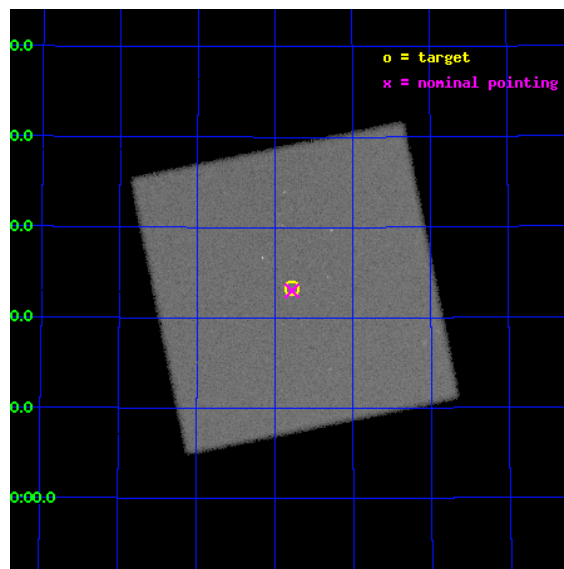
L2 Processing Date : Dec 8 2012

Contents

1	Front	2
2	OBI	3
2.1	OBI	3
2.1.1	Images	3
2.1.2	Parameters	4
2.1.3	Events	4
2.2	Compared Parameters	5
2.3	Aspect	6
2.4	Star Slots	9
2.4.1	Slot 3	9
2.4.2	Slot 4	10
2.4.3	Slot 5	11
2.4.4	Slot 6	12
2.4.5	Slot 7	13
2.5	FID Slots	14
2.5.1	Slot 0	14
2.5.2	Slot 1	15
2.5.3	Slot 2	16
A	Summary	17
A.1	Status	17
A.2	Comments	17

1 Front

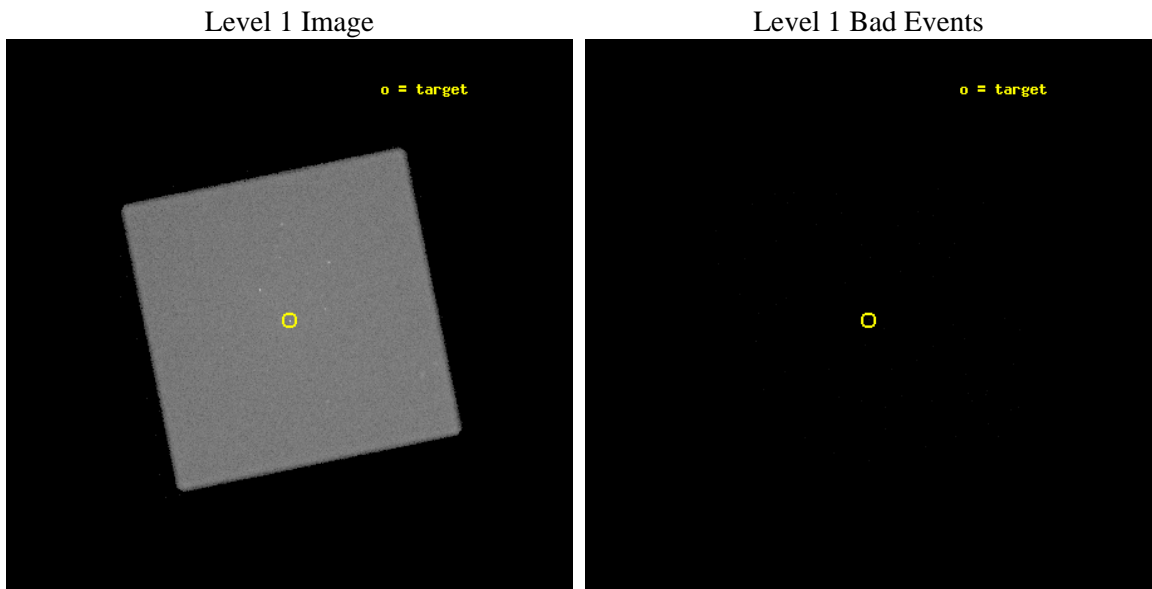
seq_num	700930	Sequence number
obs_id	4848	Observation id
title	EXTENDED EMISSION AND ACCRETION RATES IN BL LACERTAE OBJECTS	Propo
observer	Dr. Rita Sambruna	Principal investigator
object	PG 1418+546	Source name
ra_targ	214.944167	Observer's specified target RA [deg]
dec_targ	54.387444	Observer's specified target Dec [deg]
ra_nom	214.94548292166	Nominal RA [deg]
dec_nom	54.38335784927	Nominal Dec [deg]
roll_nom	303.45770581122	Nominal Roll [deg]
revision	4	Processing version of data
ontime	20160.469649255	[s]
livetime	20018.022306193	Ontime multiplied by DTCOR
l2events	775350	Number of level 2 events



2 OBI

2.1 OBI

2.1.1 Images



2.1.2 Parameters

obi_num	0	Obi number	sched_exp_time	20000.000000	[s] Scheduled observation exposure time
ascdsver	8.5	Processing system revision	ontime	20160.469649255	[s]
caldsver	4.5.4	 	l1events	1198820	Number of level 1 events
date	2012-12-08T09:52:55	Date and time of file creation			
revision	4	Processing version of data			

2.1.3 Events

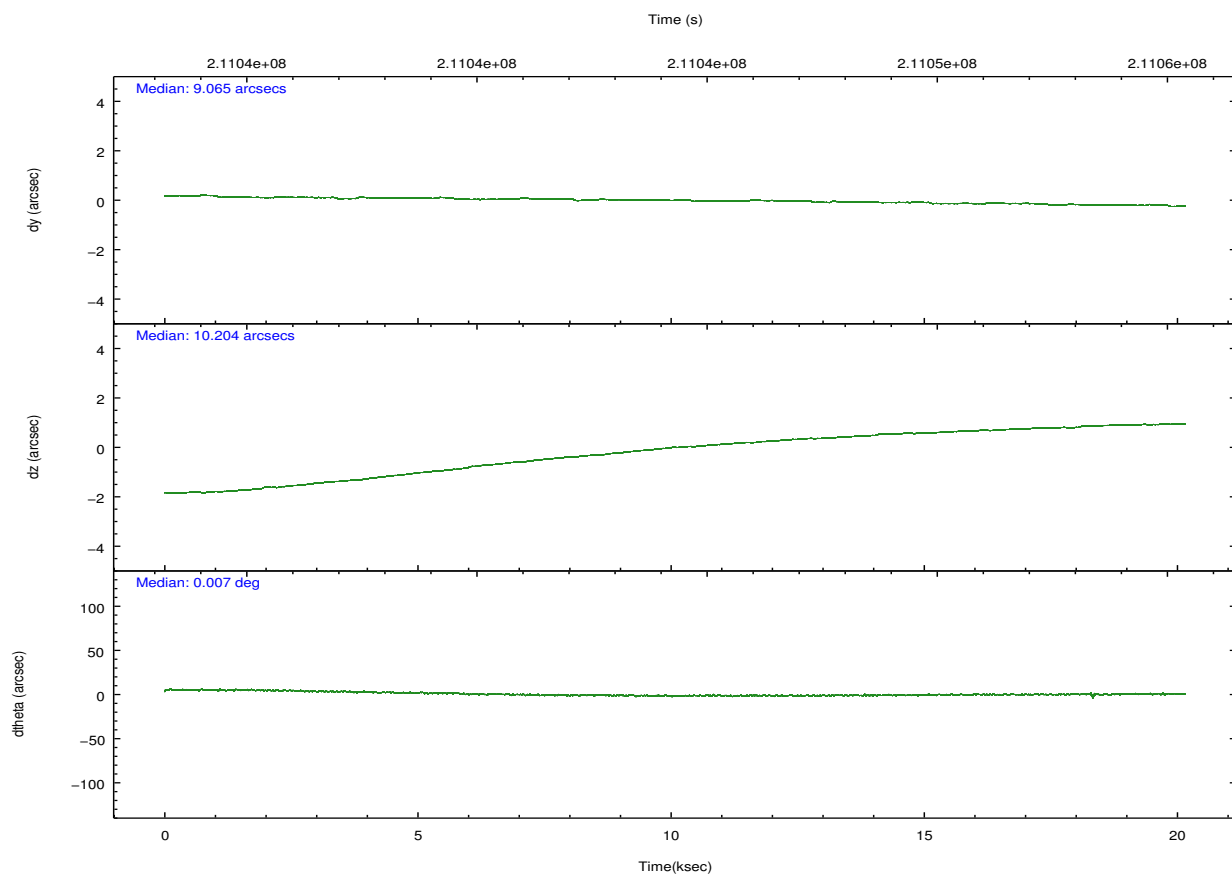
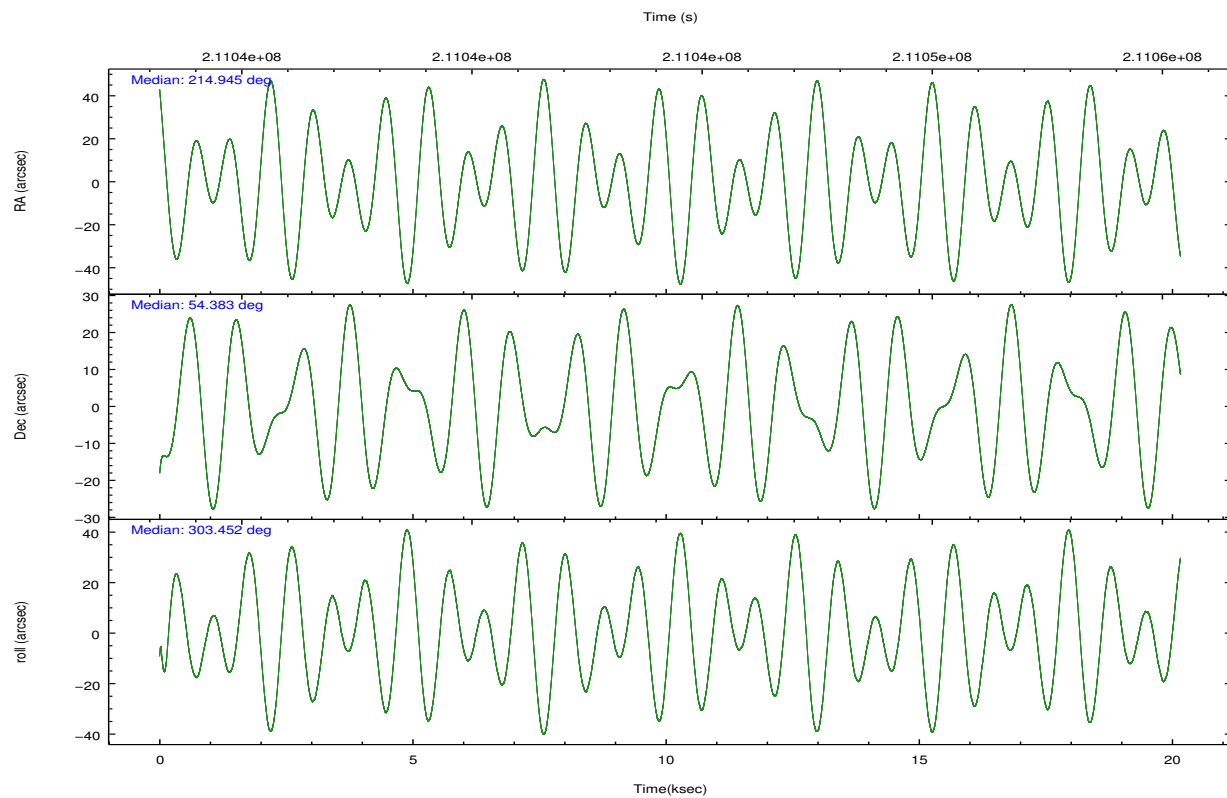
Level 1 Events

	segment 0
level 1 events	1198820
rejected events	52738
rejected %	4%

2.2 Compared Parameters

Parameter	Planned	Actual	Parameter	Planned	Actual
Instrument	HRC	HRC	Obspar format version number	7	7
Detector	HRC-I	HRC-I	Obspar file type	PREDICTED	ACTUAL
Grating	NONE	NONE	Obspar update status	NONE	UPDATED
Data mode	OBSERVING	OBSERVING			
Observation mode	POINTING	POINTING			
[deg] Pointing RA	214.903382	214.9454829216596			
[deg] Pointing Dec	54.394892	54.38335784926966			
[deg] Pointing Roll	303.587400	303.4577058112235			
[mm] SIM focus pos	-1.040293	-1.038866356238299			
[mm] SIM defocus	0	0.001426264420575141			
[mm] SIM translation stage pos	126.985494	126.9829799899862			
[mm] SIM translation stage offset	0	0.002508901615314585			
[s] Observation start time (MET)	211034382.184000	211033279.05599			
Observation start date	2004-09-08T12:38:38	2004-09-08T12:21:19			
[s] Observation end time (MET)	211054382.184000	211054596.49445			
Observation end date	2004-09-08T18:11:58	2004-09-08T18:16:36			

2.3 Aspect

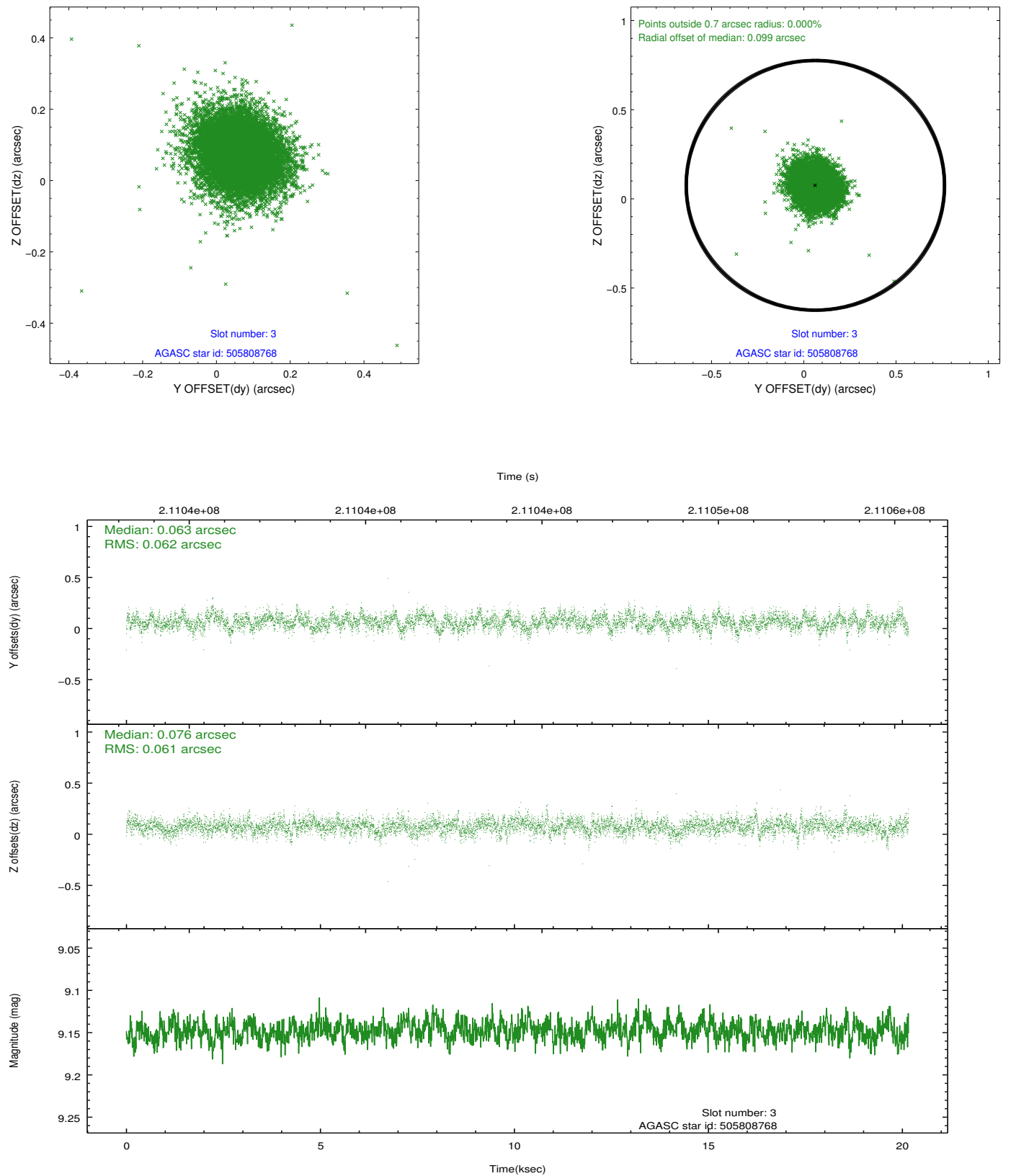


Slot Statistics

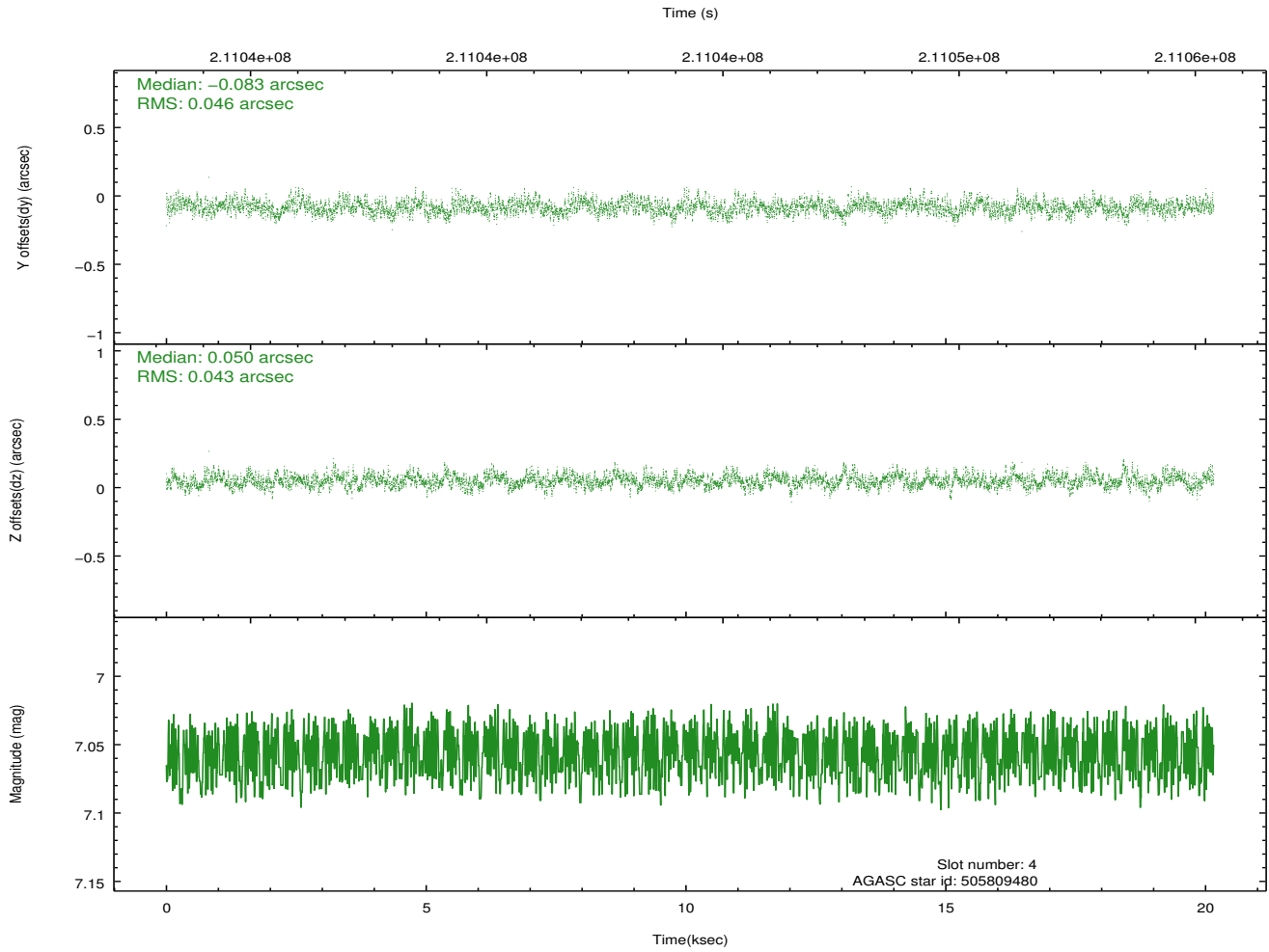
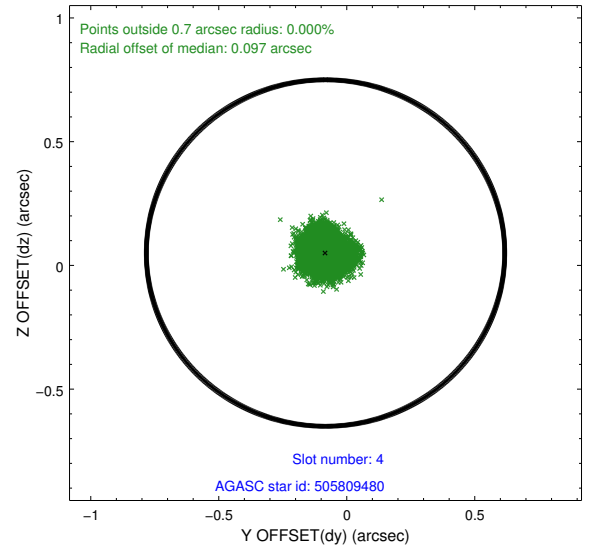
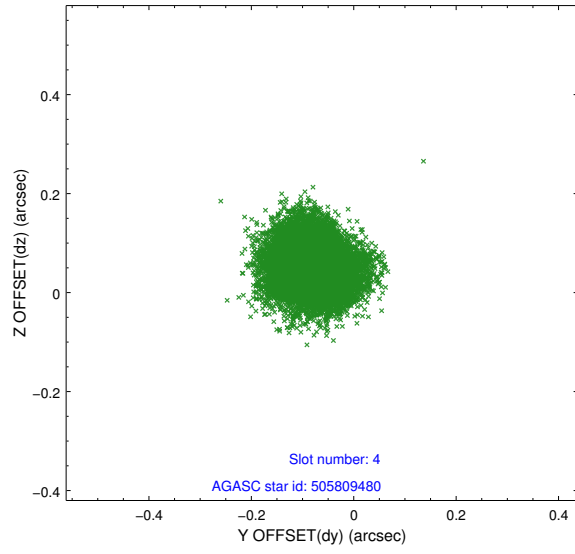
slot	status	id	mag	n_pts	med_dy	med_dz	dr1	dr2	ra	dec	mean_y	mean_z
0	FID	HRC-I-2	7.02	4918	0.066	-0.046	0.015	0.044	0.000000	0.000000	848.03	-1299.52
1	FID	HRC-I-3	7.06	4917	-0.041	-0.002	0.014	0.039	0.000000	0.000000	-1193.06	1006.37
2	FID	HRC-I-4	7.00	4917	0.093	-0.039	0.011	0.017	0.000000	0.000000	1277.94	1004.44
3	GUIDE	505808768	9.15	9827	0.063	0.076	0.091	0.151	215.134825	54.676831	-579.69	963.50
4	GUIDE	505809480	7.06	9835	-0.083	0.050	0.067	0.106	214.265638	54.542866	-1185.50	-811.81
5	GUIDE	505809688	6.86	9835	-0.152	-0.170	0.079	0.129	214.732961	54.863763	-1601.79	639.86
6	GUIDE	505810968	9.36	9813	0.165	0.024	0.095	0.158	215.076643	54.505214	-130.21	521.96
7	GUIDE	505808256	7.78	9831	0.002	0.019	0.064	0.104	213.522404	54.637471	-2342.16	-1897.86

2.4 Star Slots

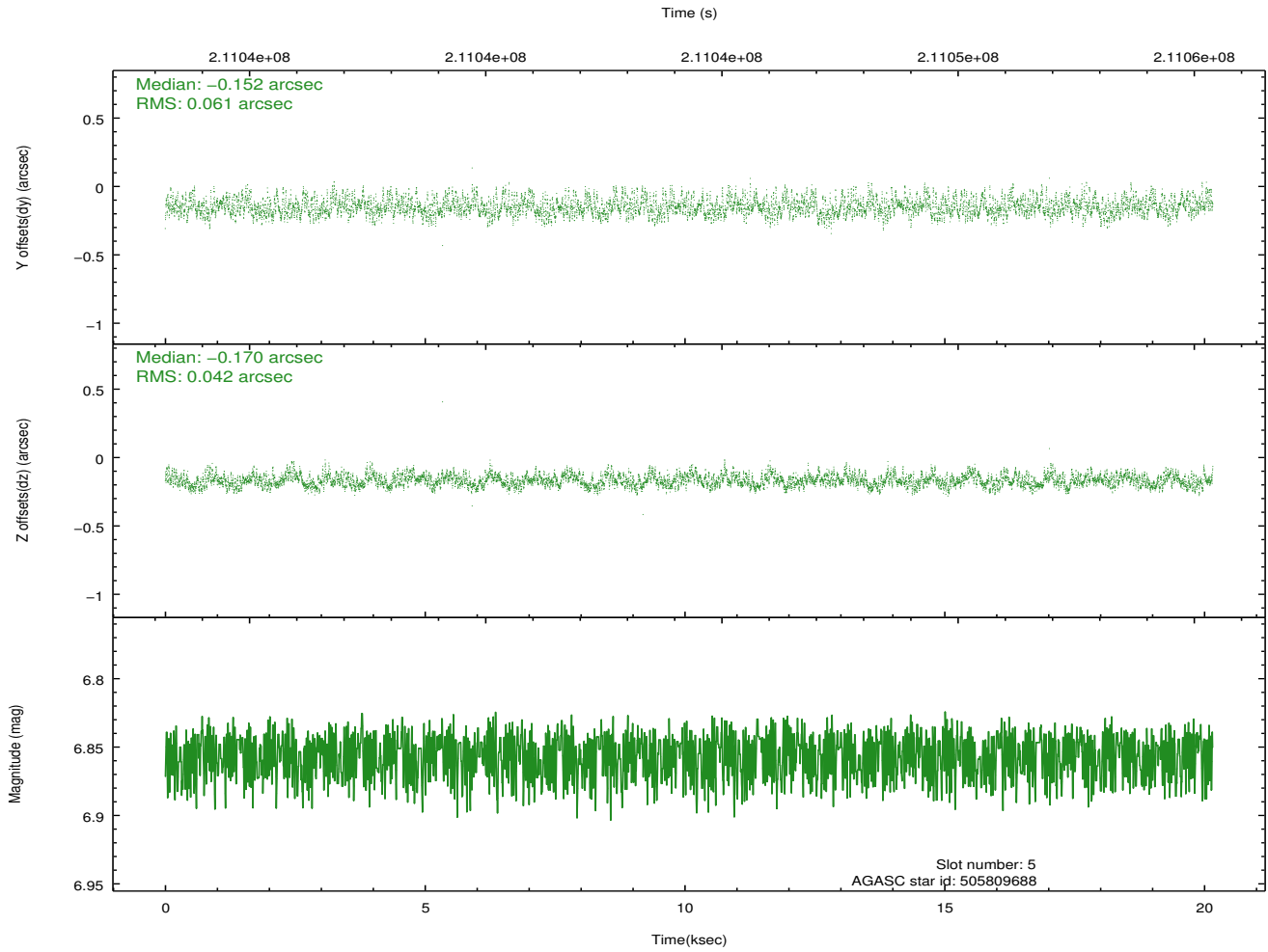
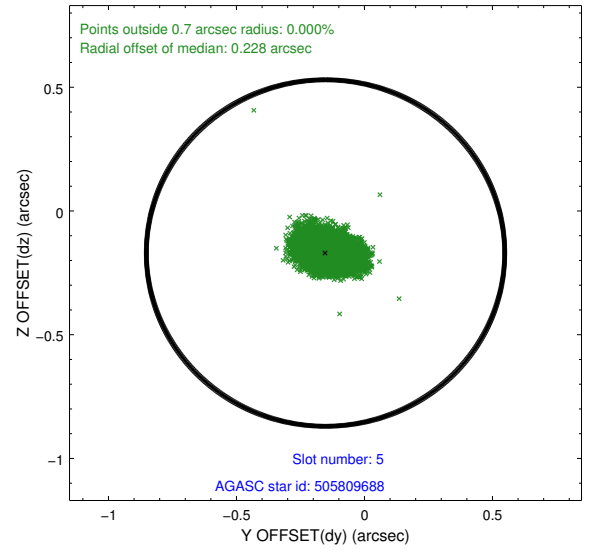
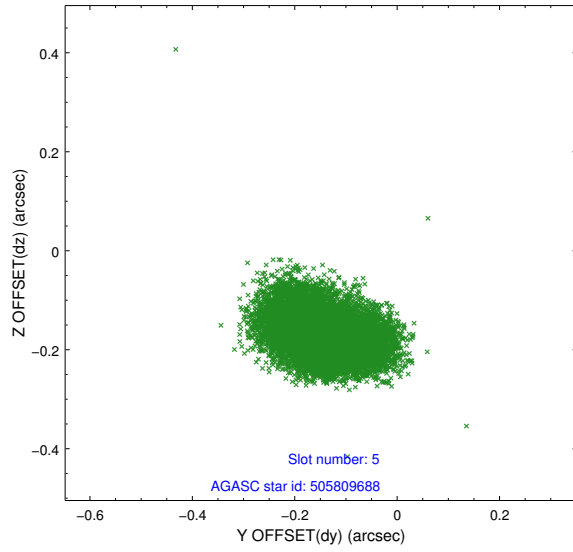
2.4.1 Slot 3



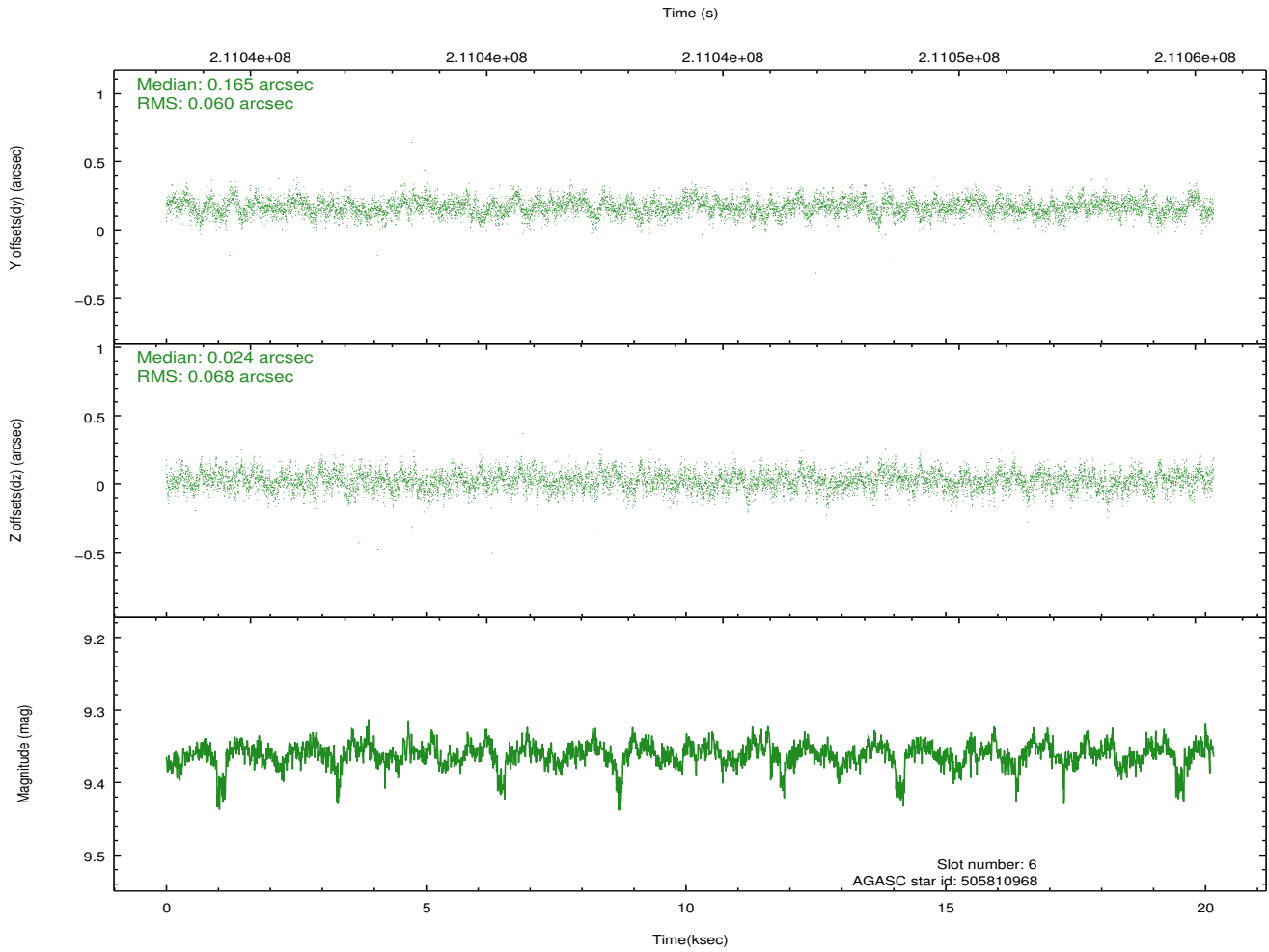
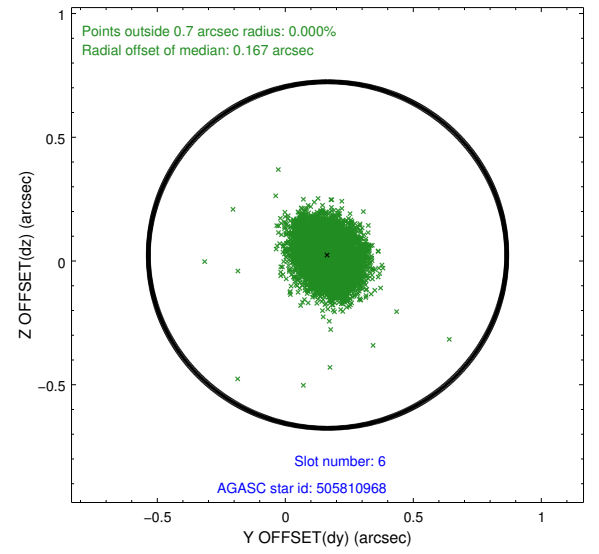
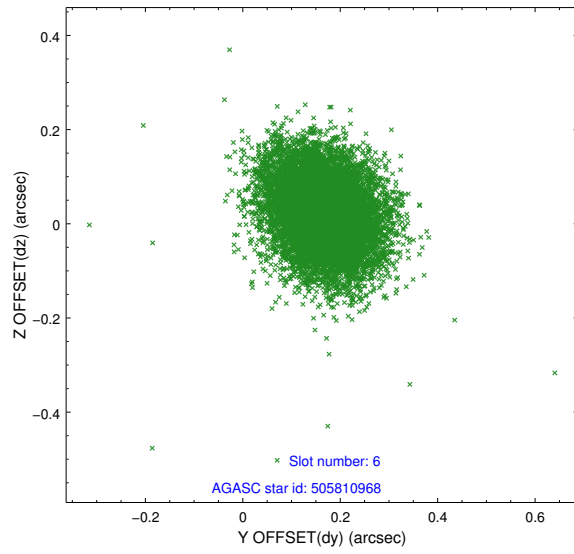
2.4.2 Slot 4



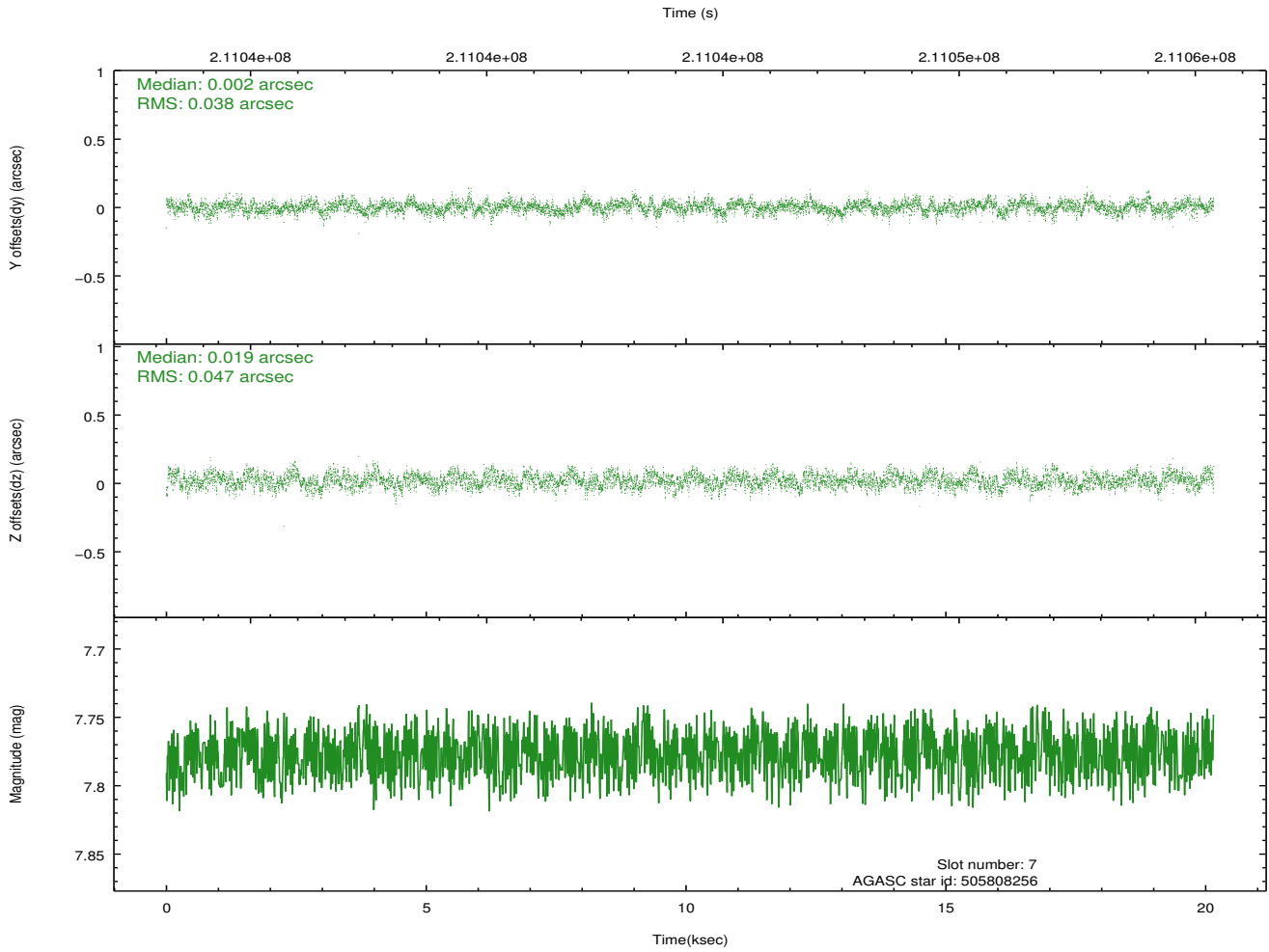
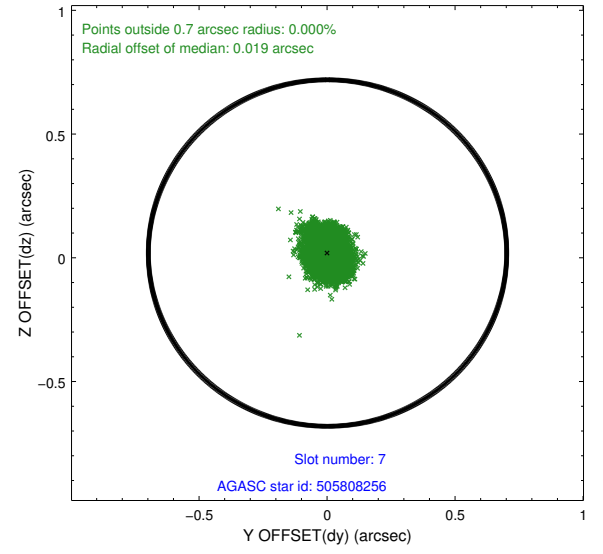
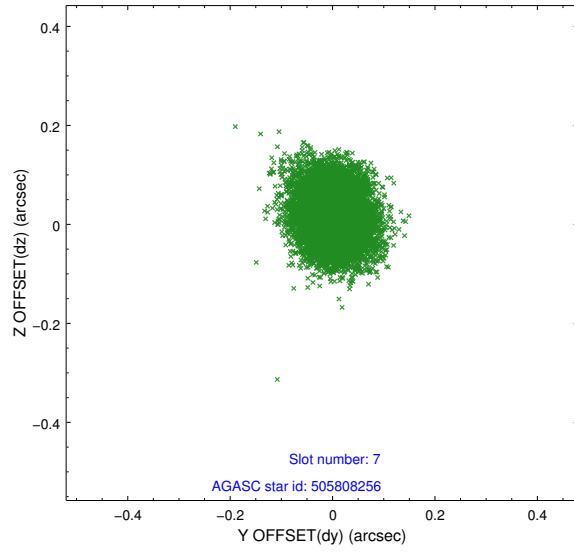
2.4.3 Slot 5



2.4.4 Slot 6

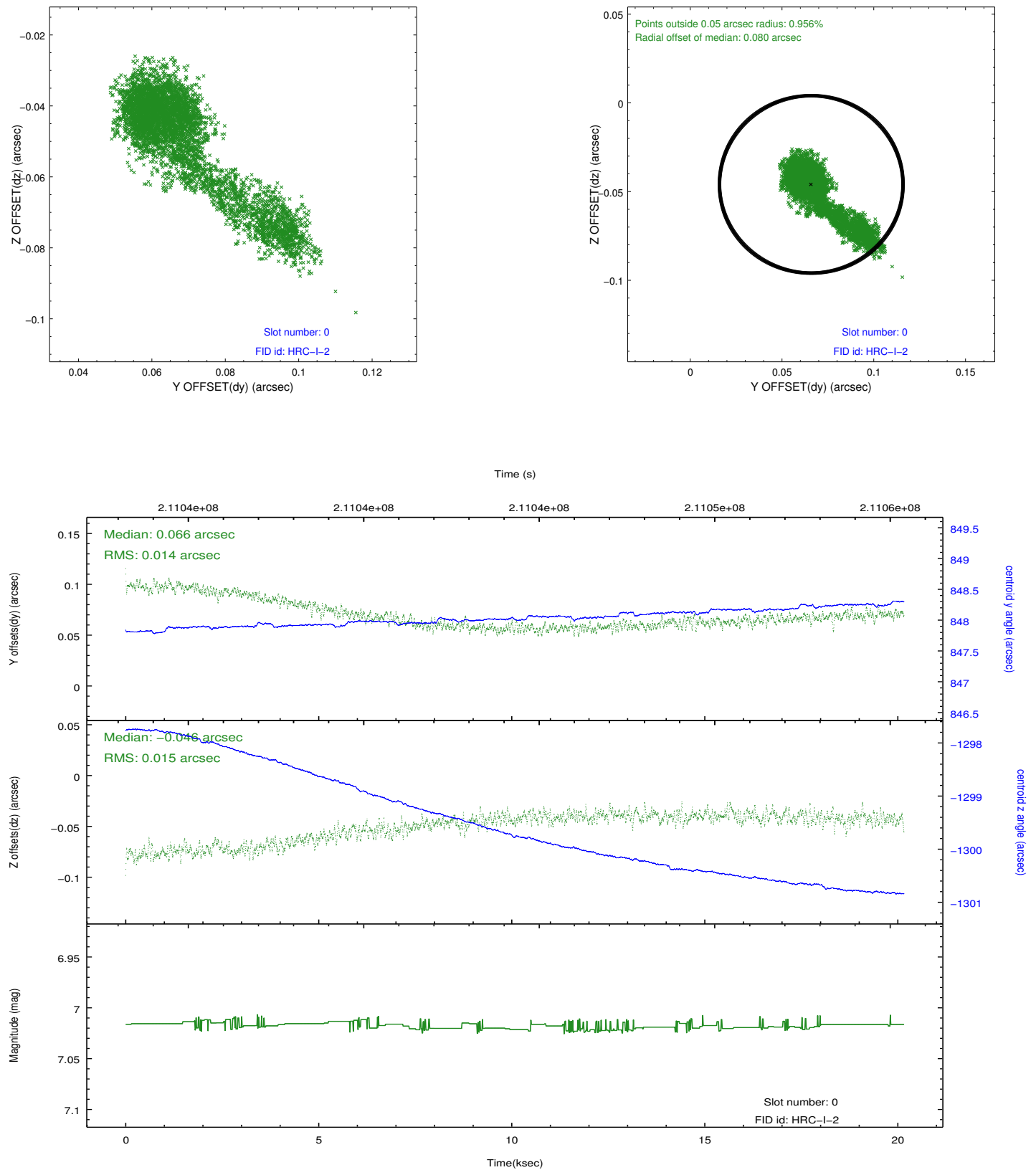


2.4.5 Slot 7

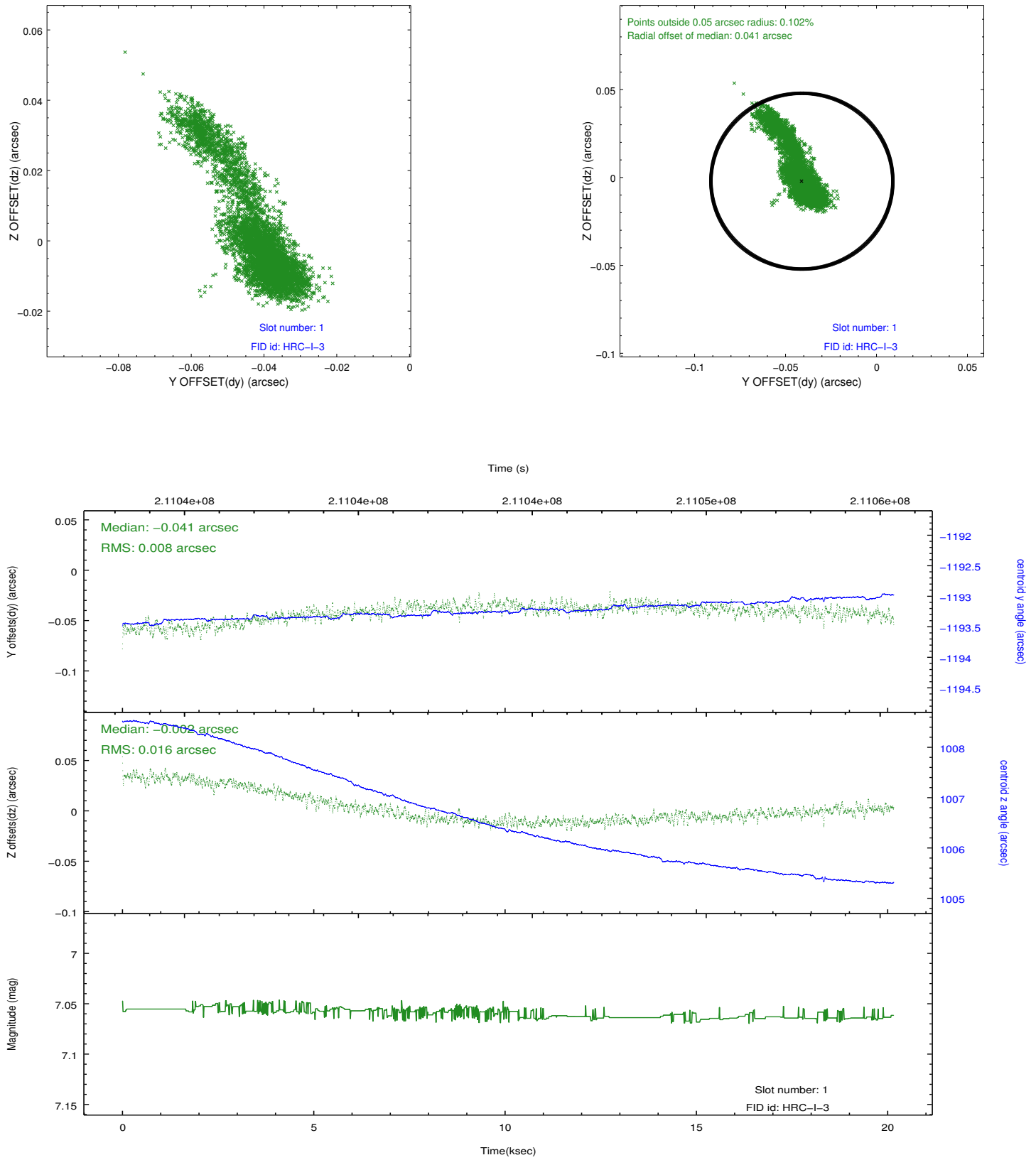


2.5 FID Slots

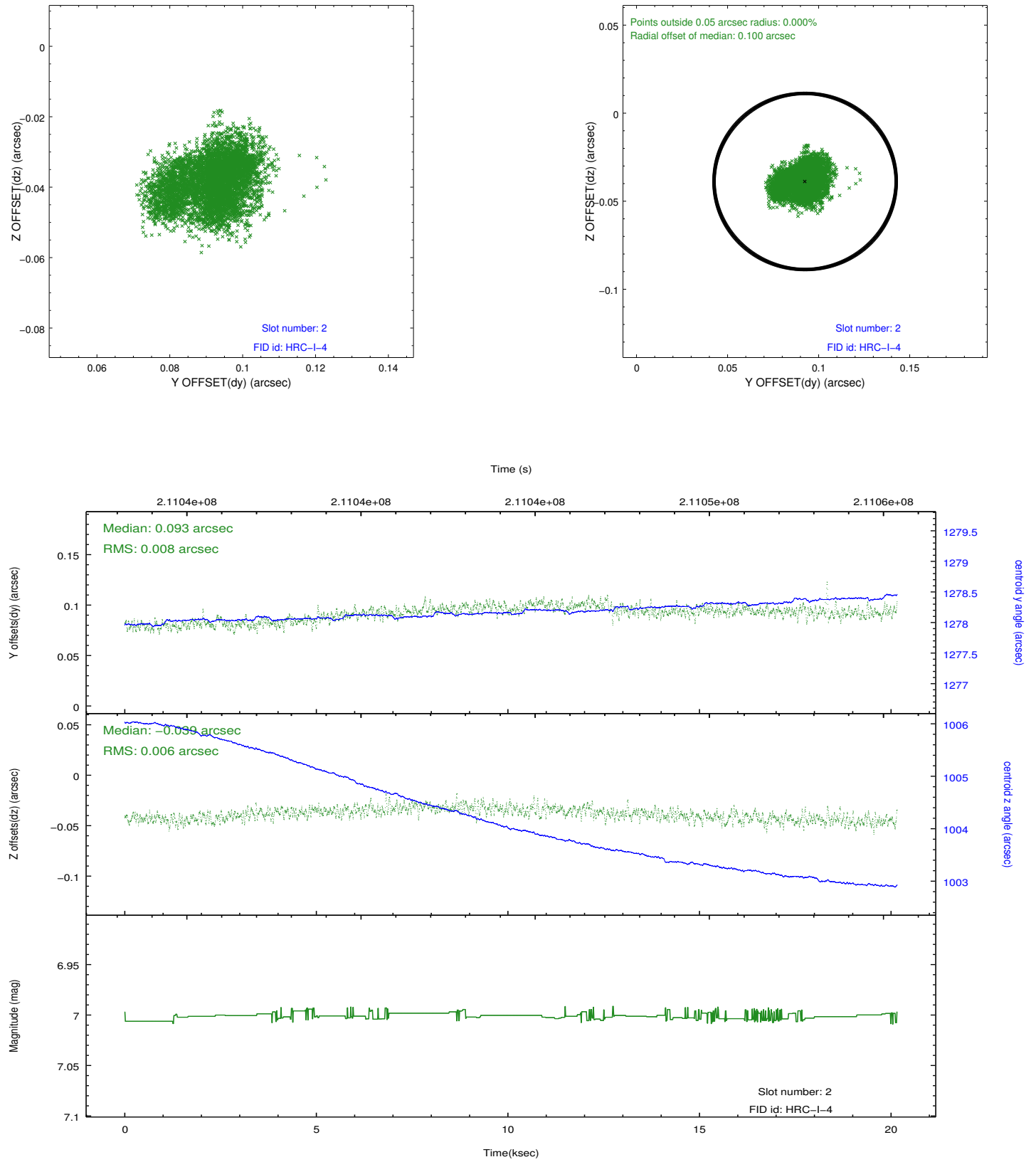
2.5.1 Slot 0



2.5.2 Slot 1



2.5.3 Slot 2



A Summary

A.1 Status

V&V Scientist	Beth Sundheim
V&V Date (YYYY-MM-DD)	2012.12.18
V&V Edition	1
V&V Disposition and Status	OK
V&V Charge Time	20.16

A.2 Comments