

V&V Reference Report

L2 ASCDS Version : 8.4.5

Observation 4827 - L2 Version 3
Chandra X-Ray Center

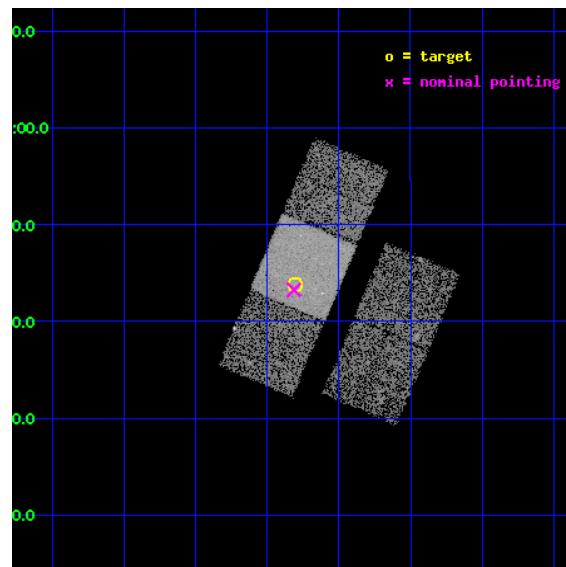
L2 Processing Date : Nov 8 2012

Contents

1	Front	2
2	OBI	3
2.1	OBI	3
2.1.1	Images	3
2.1.2	Bias	3
2.1.3	Parameters	4
2.1.4	Events	4
2.2	Compared Parameters	5
2.3	Aspect	6
2.4	Star Slots	9
2.4.1	Slot 3	9
2.4.2	Slot 4	10
2.4.3	Slot 5	11
2.4.4	Slot 6	12
2.4.5	Slot 7	13
2.5	FID Slots	14
2.5.1	Slot 0	14
2.5.2	Slot 1	15
2.5.3	Slot 2	16
A	Summary	17
A.1	Status	17
A.2	Comments	17

1 Front

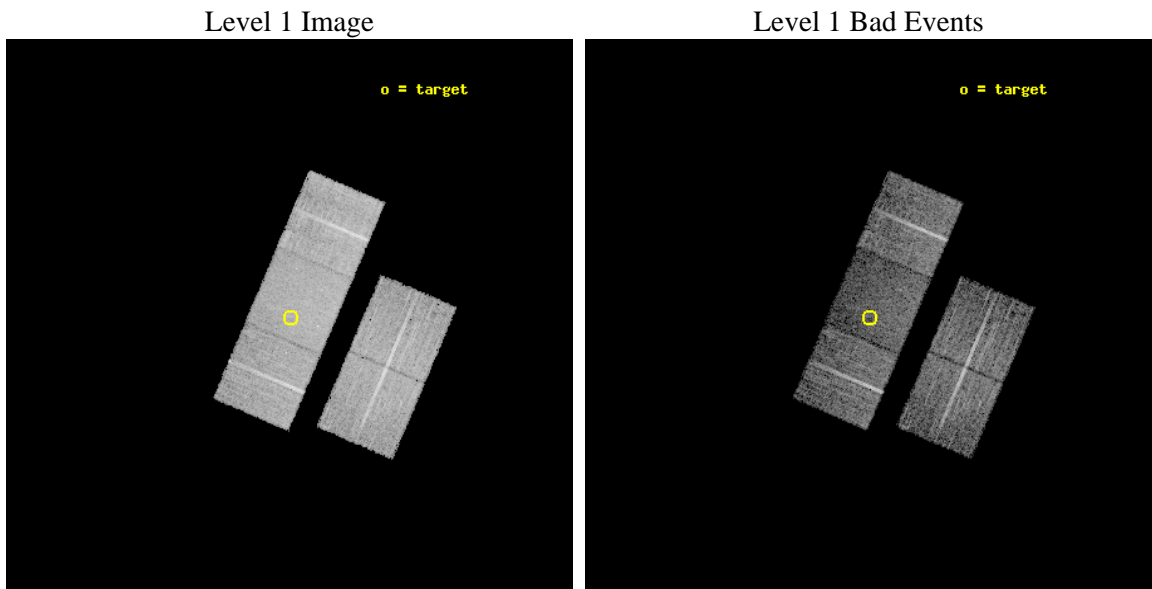
seq_num	700909	Sequence number
obs_id	4827	Observation id
title	Destroying Degeneracy: Spanning the Luminosity Range for Radio-Quiet Quasars at z=4	Proposal title
observer	Dr. Jill Bechtold	Principal investigator
object	SDS 2357+0043	Source name
dtcycle	0	
cycle	P	events from which exps? Prim/Second/Both
ra_targ	359.32625	Observer's specified target RA [deg]
dec_targ	0.730556	Observer's specified target Dec [deg]
ra_nom	359.32845445976	Nominal RA [deg]
dec_nom	0.72110506985043	Nominal Dec [deg]
roll_nom	293.1651948254	Nominal Roll [deg]
revision	3	Processing version of data
ontime	12821.599975318	Sum of GTIs [s]
livetime	12654.076332516	Livetime [s]
ontime2	12818.458995074	Sum of GTIs [s]
ontime3	12821.599975318	Sum of GTIs [s]
ontime6	12821.599975318	Sum of GTIs [s]
ontime7	12821.599975318	Sum of GTIs [s]
ontime8	12821.599975318	Sum of GTIs [s]
l2events	49321	Number of level 2 events



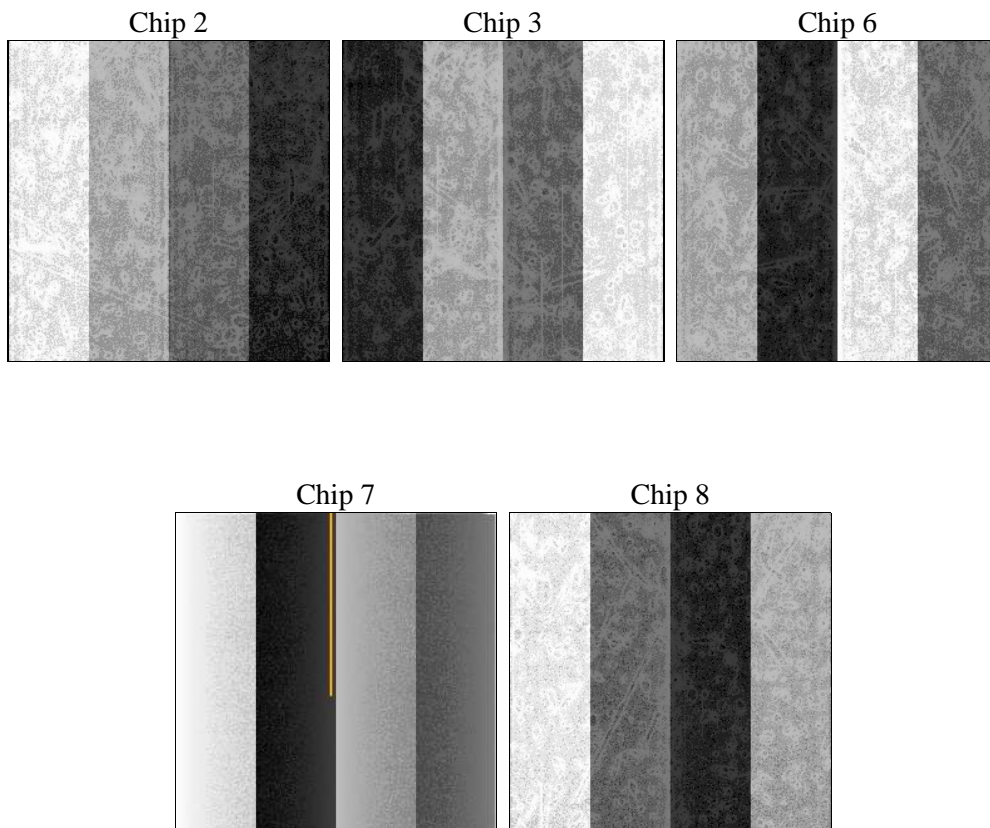
2 OBI

2.1 OBI

2.1.1 Images



2.1.2 Bias



2.1.3 Parameters

obi_num	1	Obi number	sched_exp_time	12716.000000	[s] Scheduled observation exposure time
ascdsver	8.4.5	Processing system revision	ontime	12821.599975318	Sum of GTIs [s]
caldsver	4.5.2	 	ontime2	12818.458995074	Sum of GTIs [s]
date	2012-11-08T07:41:22	Date and time of file creation	ontime3	12821.599975318	Sum of GTIs [s]
revision	3	Processing version of data	ontime6	12821.599975318	Sum of GTIs [s]
			ontime7	12821.599975318	Sum of GTIs [s]
			ontime8	12821.599975318	Sum of GTIs [s]
			l1events	292439	Number of level 1 events

2.1.4 Events

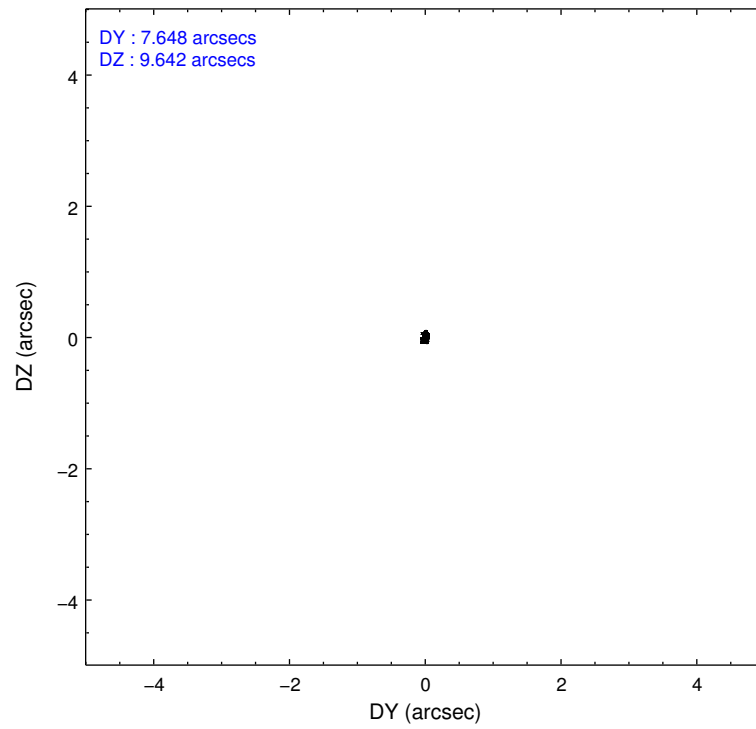
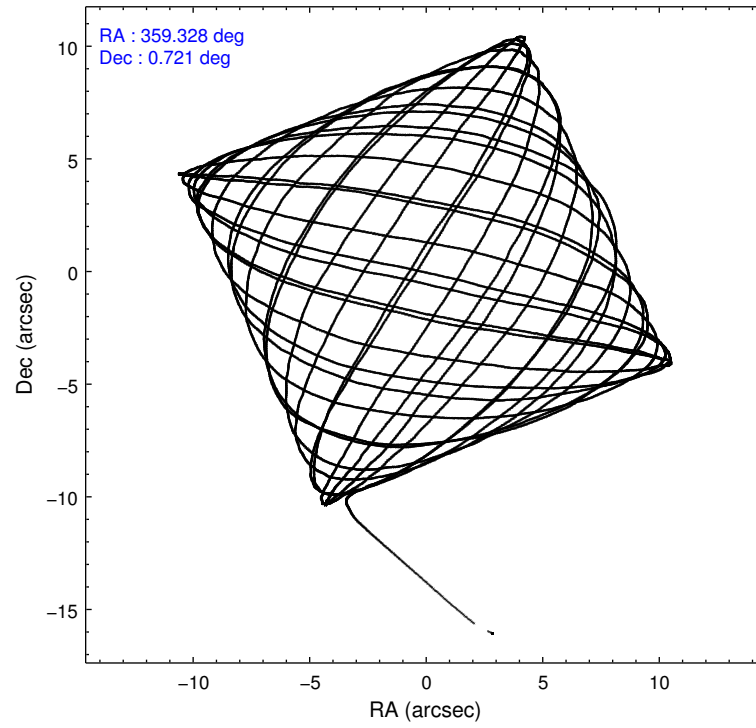
	ccd 2	ccd 3	ccd 6	ccd 7	ccd 8
level 1 events	53115	53662	53438	62284	69940
rejected events	47437	48320	46844	33610	52876
rejected %	89%	90%	87%	53%	75%

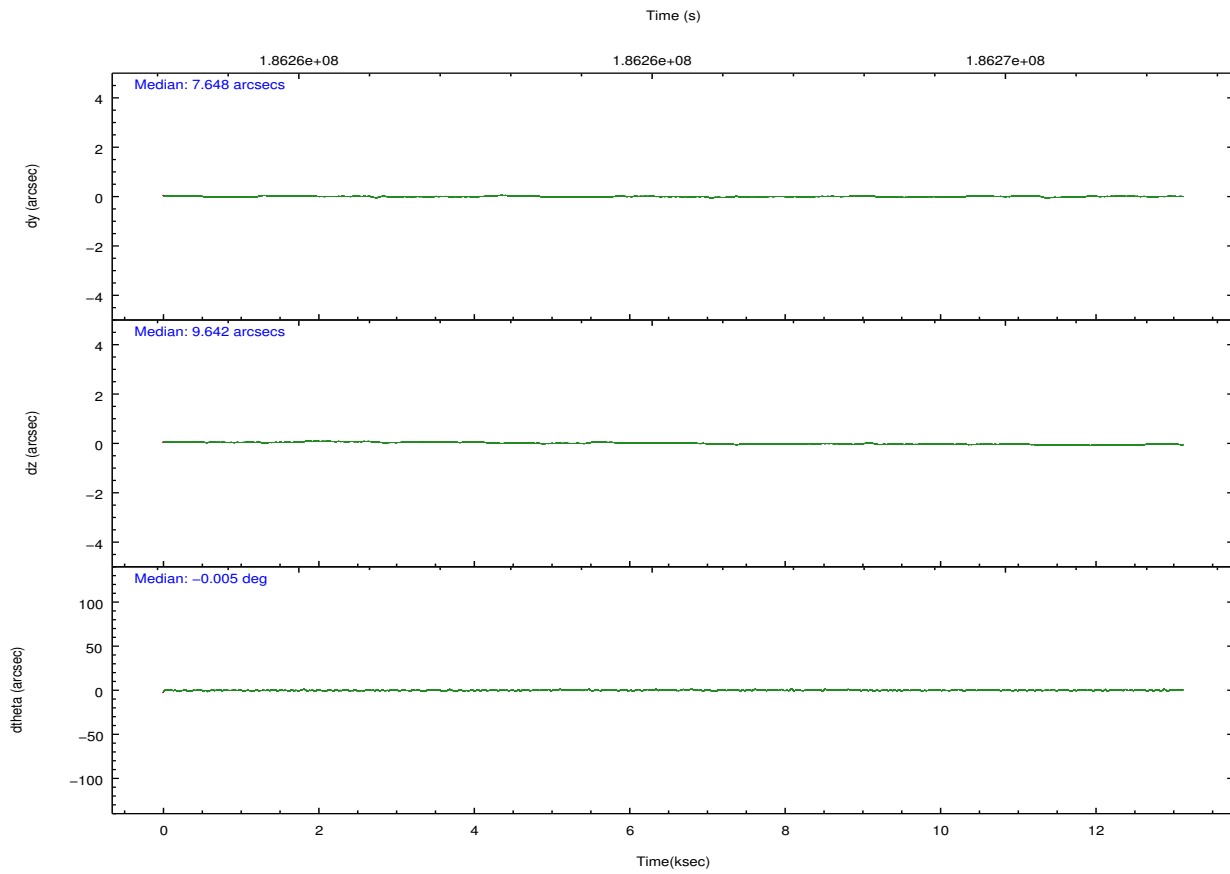
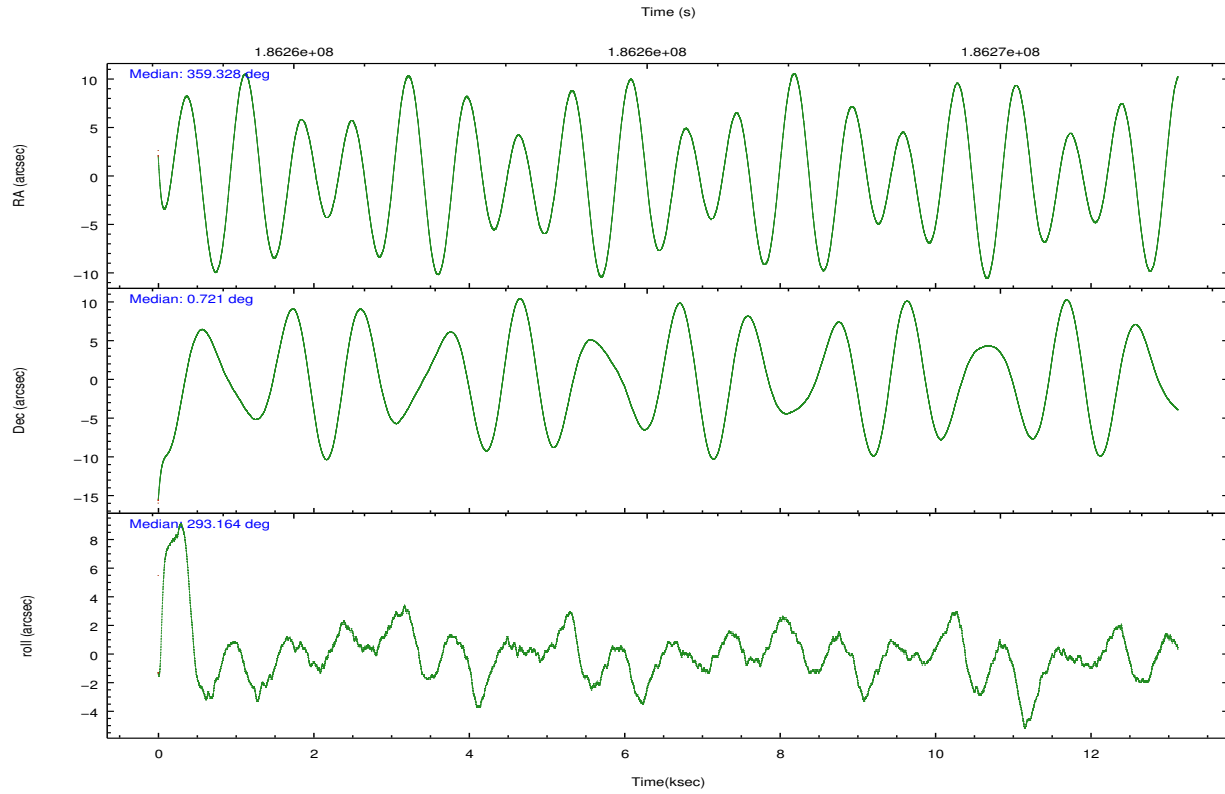
	ccd 2	ccd 3	ccd 6	ccd 7	ccd 8
grade 0 events	2255	1996	2594	2849	5372
	4%	3%	4%	4%	7%
grade 1 events	23	34	23	58	41
	0%	0%	0%	0%	0%
grade 2 events	1188	1083	1359	5790	3513
	2%	2%	2%	9%	5%
grade 3 events	641	684	710	2726	1954
	1%	1%	1%	4%	2%
grade 4 events	605	593	665	2687	1894
	1%	1%	1%	4%	2%
grade 5 events	1756	2170	2274	6434	3107
	3%	4%	4%	10%	4%
grade 6 events	991	987	1269	14639	4376
	1%	1%	2%	23%	6%
grade 7 events	45656	46115	44544	27101	49683
	85%	85%	83%	43%	71%

2.2 Compared Parameters

Parameter	Planned	Actual	Parameter	Planned	Actual
Instrument	ACIS	ACIS	Obspar format version number	7	7
Detector	ACIS-23678	ACIS-23678	Obspar file type	PREDICTED	ACTUAL
Grating	NONE	NONE	Obspar update status	NONE	UPDATED
Data mode	VFAINT	VFAINT	Number of optional ACIS chips dropped	0	0
Observation mode	POINTING	POINTING	On-chip summing requested	N	N
[deg] Pointing RA	359.306420	359.3284544597552	Subarray requested	NONE	NONE
[deg] Pointing Dec	0.737162	0.7211050698504252	Alternating exposures requested	N	N
[deg] Pointing Roll	293.008857	293.1651948253985	[s] Primary exposure time	0.000000	3.1
[mm] SIM focus pos	-0.684267	-0.6828225247311905			
[mm] SIM defocus	0	0.001444936568705701			
[mm] SIM translation stage pos	-190.132523	-190.1425803651734			
[mm] SIM translation stage offset	0	0.01005778216563158			
[s] Observation start time (MET)	186259138.184000	186258068.56577			
Observation start date	2003-11-26T18:37:54	2003-11-26T18:21:08			
[s] Observation end time (MET)	186271854.184000	186272530.2914			
Observation end date	2003-11-26T22:09:50	2003-11-26T22:22:10			
Read mode	TIMED	TIMED			

2.3 Aspect



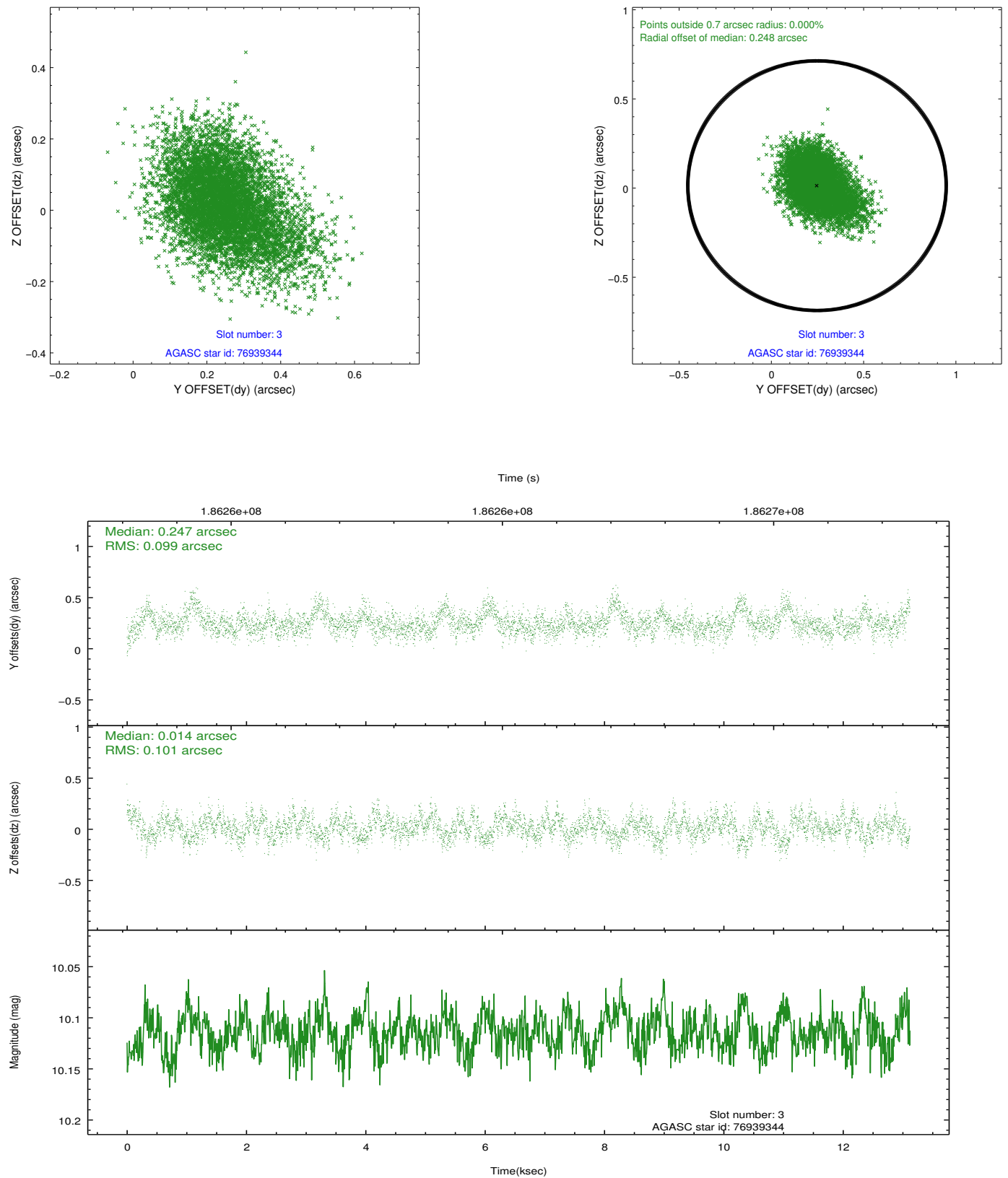


Slot Statistics

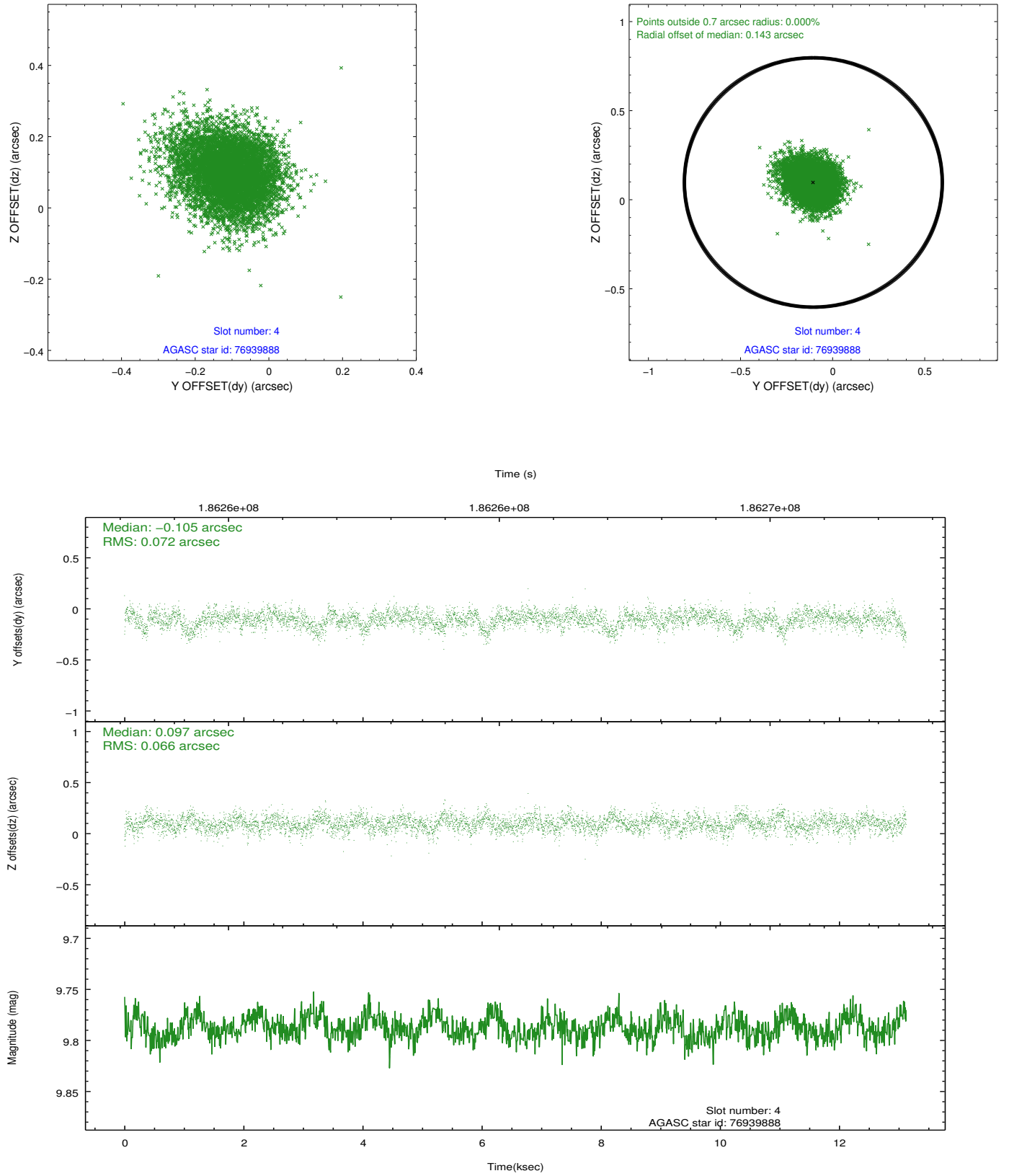
slot	status	id	mag	n_pts	med_dy	med_dz	dr1	dr2	ra	dec	mean_y	mean_z
0	FID	ACIS-S-2	7.10	3201	-0.054	-0.029	0.005	0.009	0.000000	0.000000	-760.44	-1730.87
1	FID	ACIS-S-4	7.20	3201	0.061	0.025	0.007	0.011	0.000000	0.000000	2152.75	177.33
2	FID	ACIS-S-6	7.35	3201	-0.035	0.011	0.007	0.011	0.000000	0.000000	401.99	815.10
3	GUIDE	76939344	10.11	6398	0.247	0.014	0.148	0.250	359.239870	0.159162	1822.52	-1033.60
4	GUIDE	76939888	9.79	6401	-0.105	0.097	0.103	0.170	358.971554	1.120175	-1739.72	-570.37
5	GUIDE	76943592	8.42	6399	-0.202	-0.019	0.061	0.098	359.136777	1.251082	-1941.67	161.44
6	GUIDE	76943648	10.02	6399	0.172	0.025	0.105	0.170	359.582888	0.324799	1755.68	336.15
7	GUIDE	76949368	8.97	6400	-0.115	-0.114	0.091	0.147	358.665972	0.772790	-1018.71	-2071.52

2.4 Star Slots

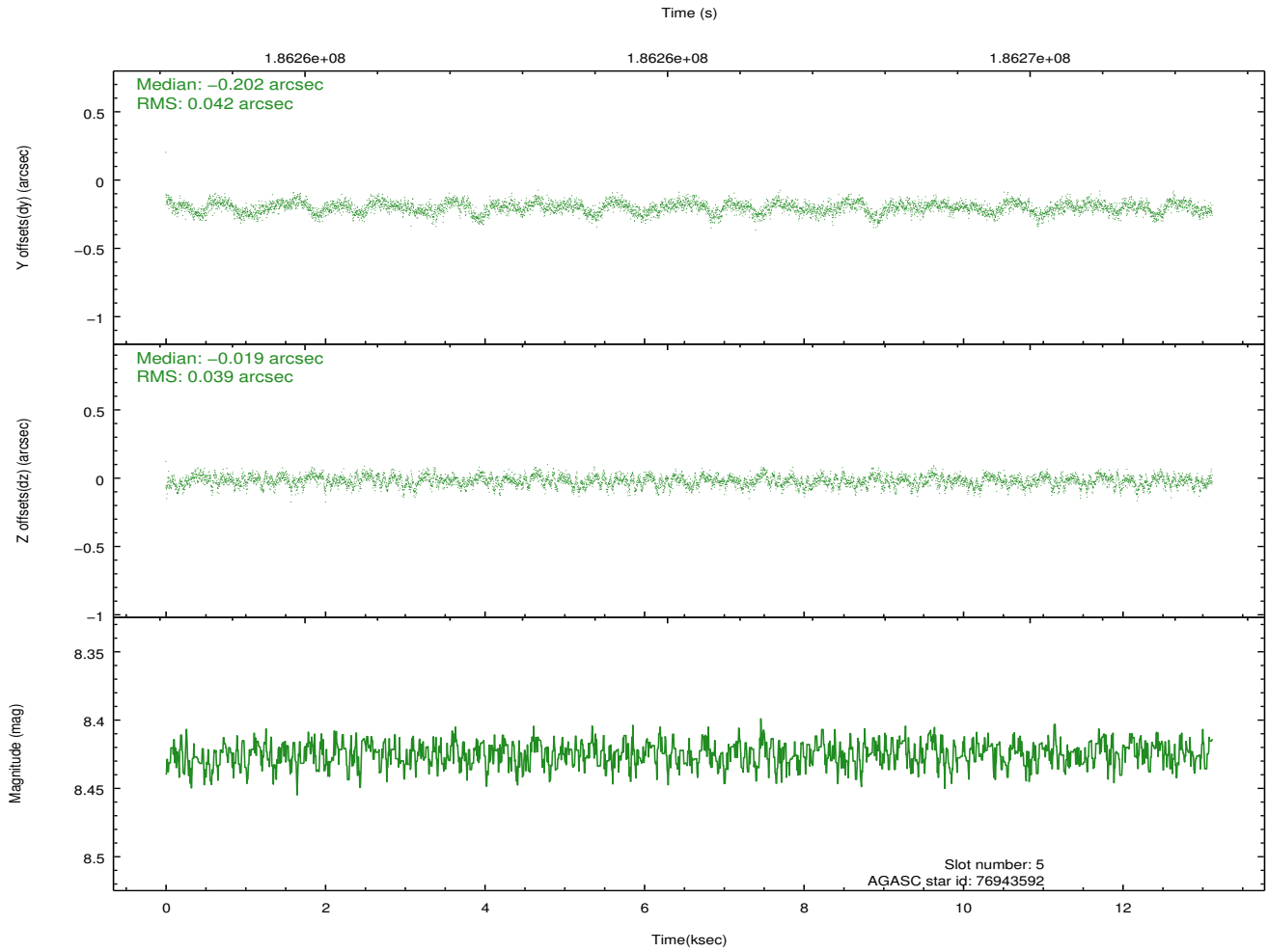
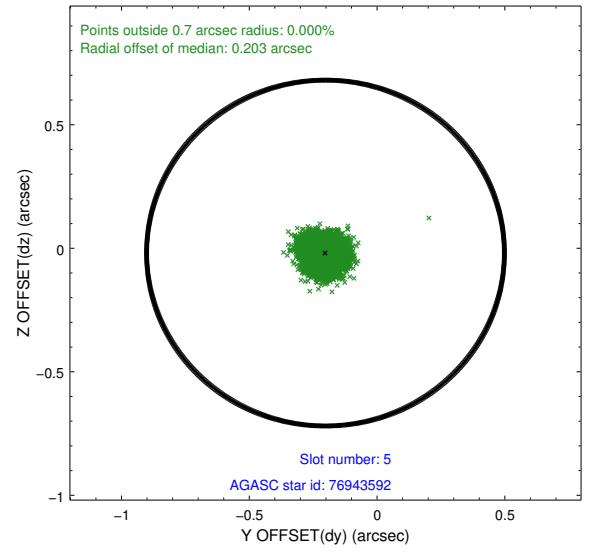
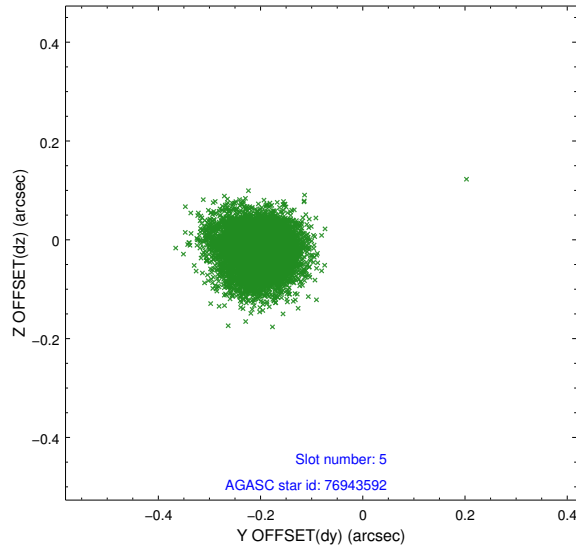
2.4.1 Slot 3



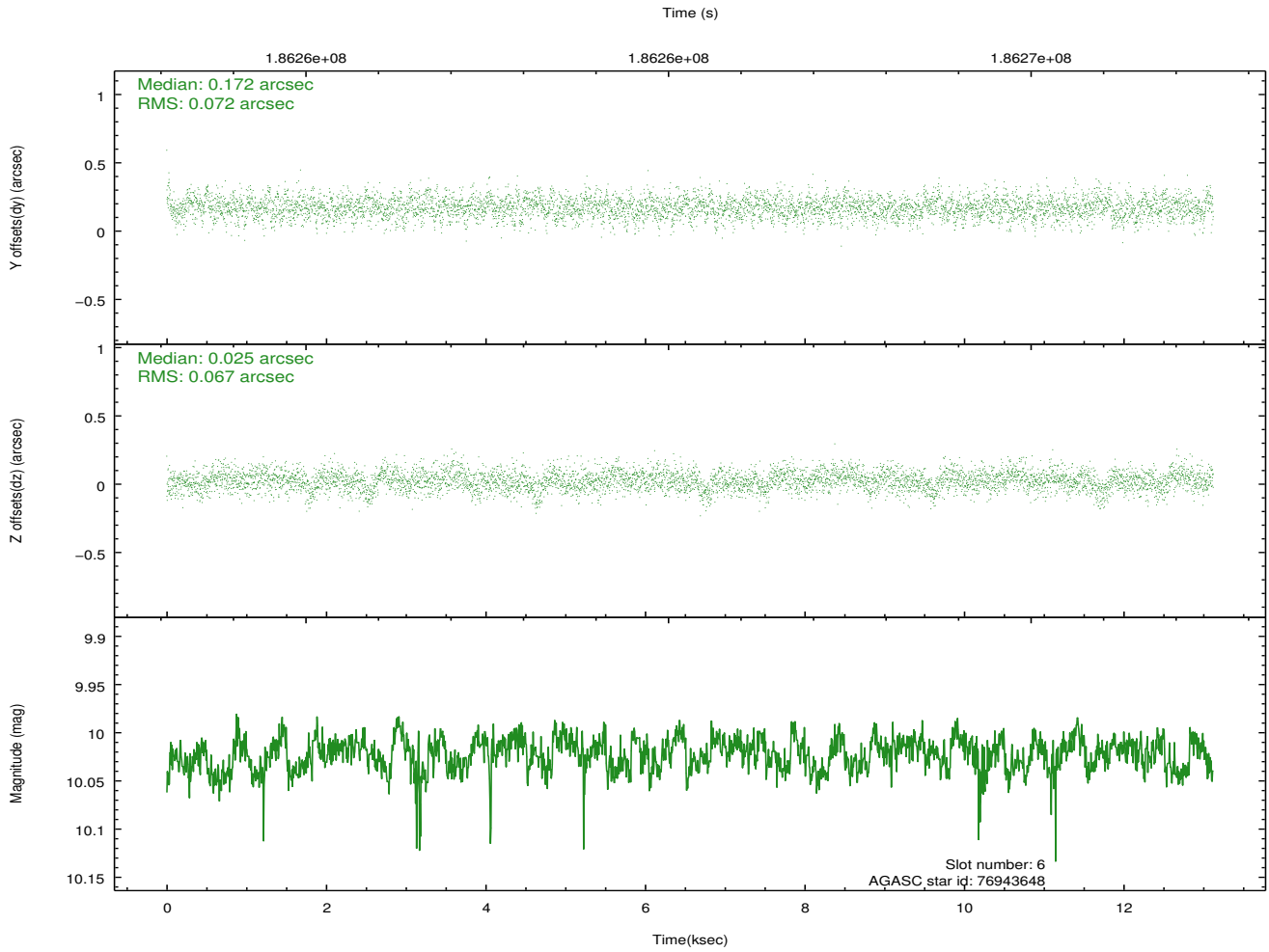
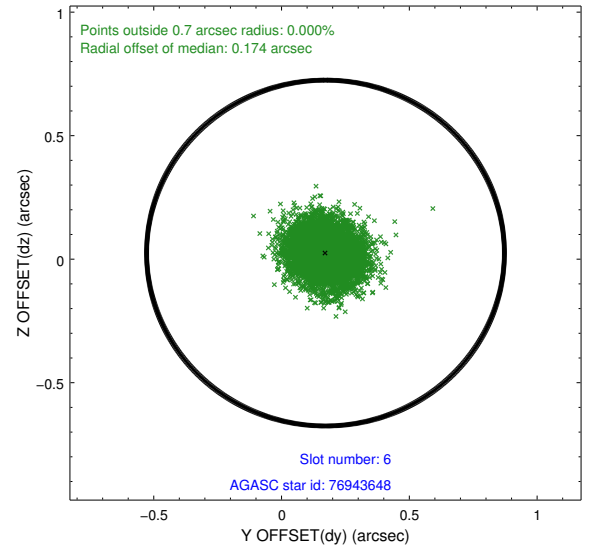
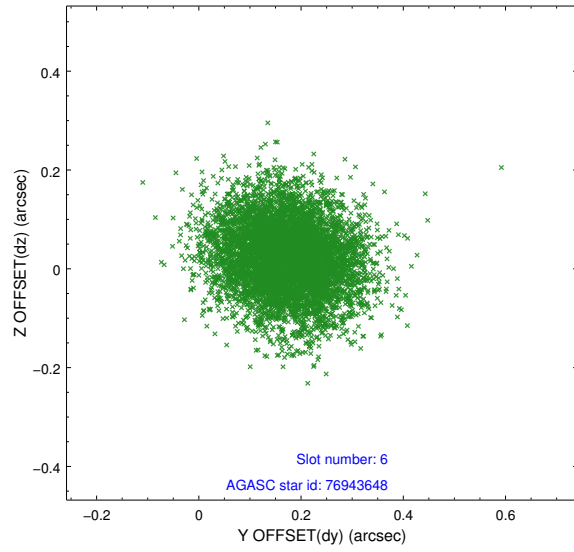
2.4.2 Slot 4



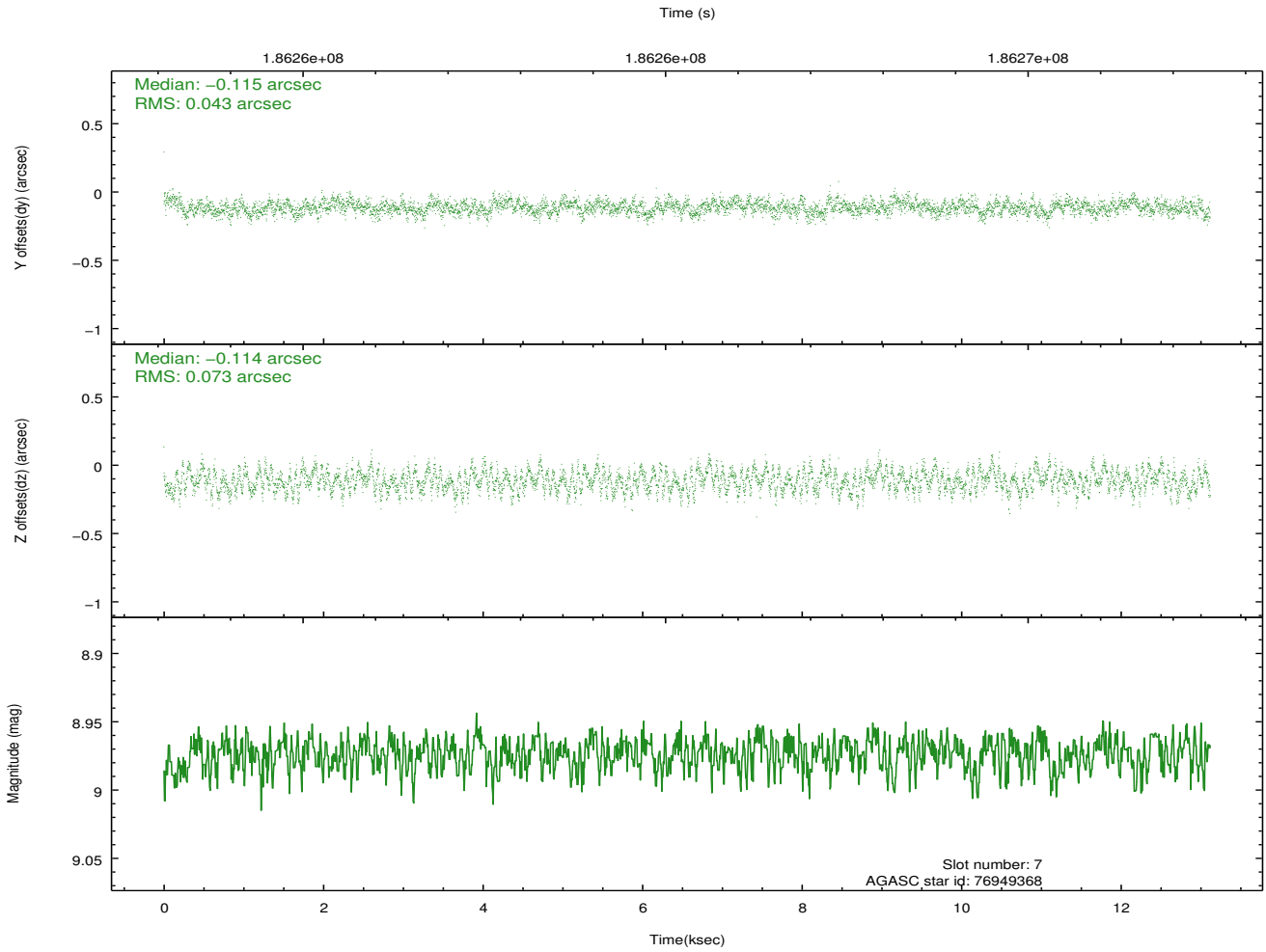
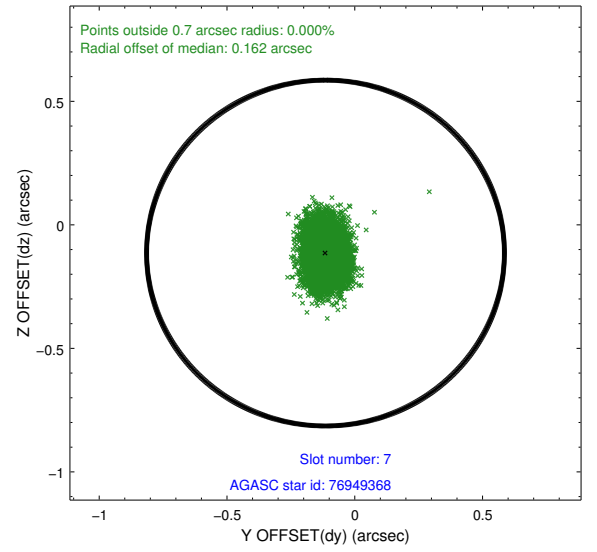
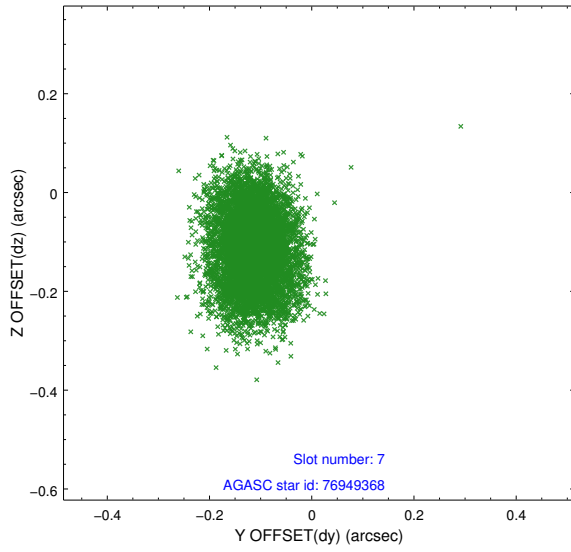
2.4.3 Slot 5



2.4.4 Slot 6

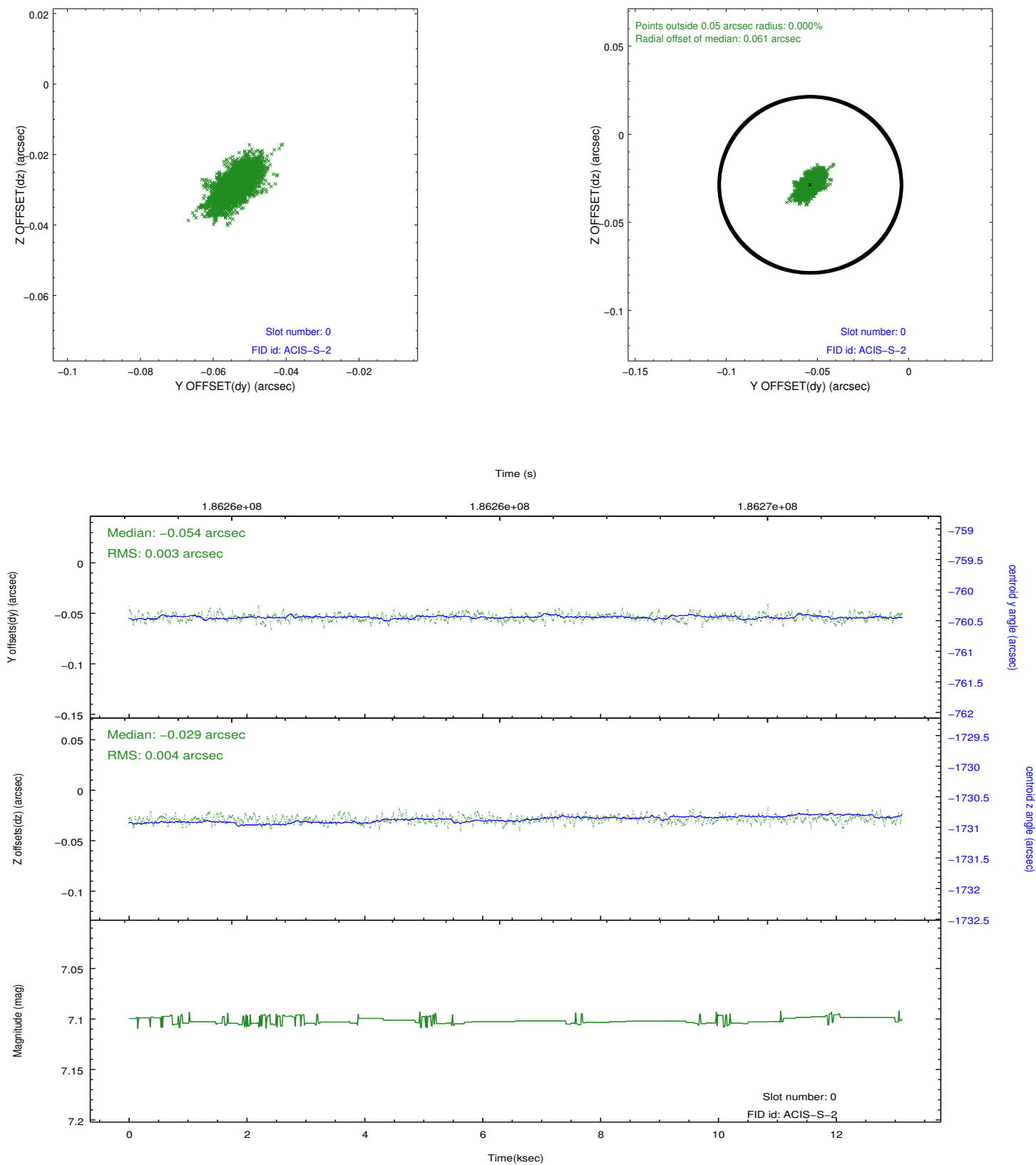


2.4.5 Slot 7

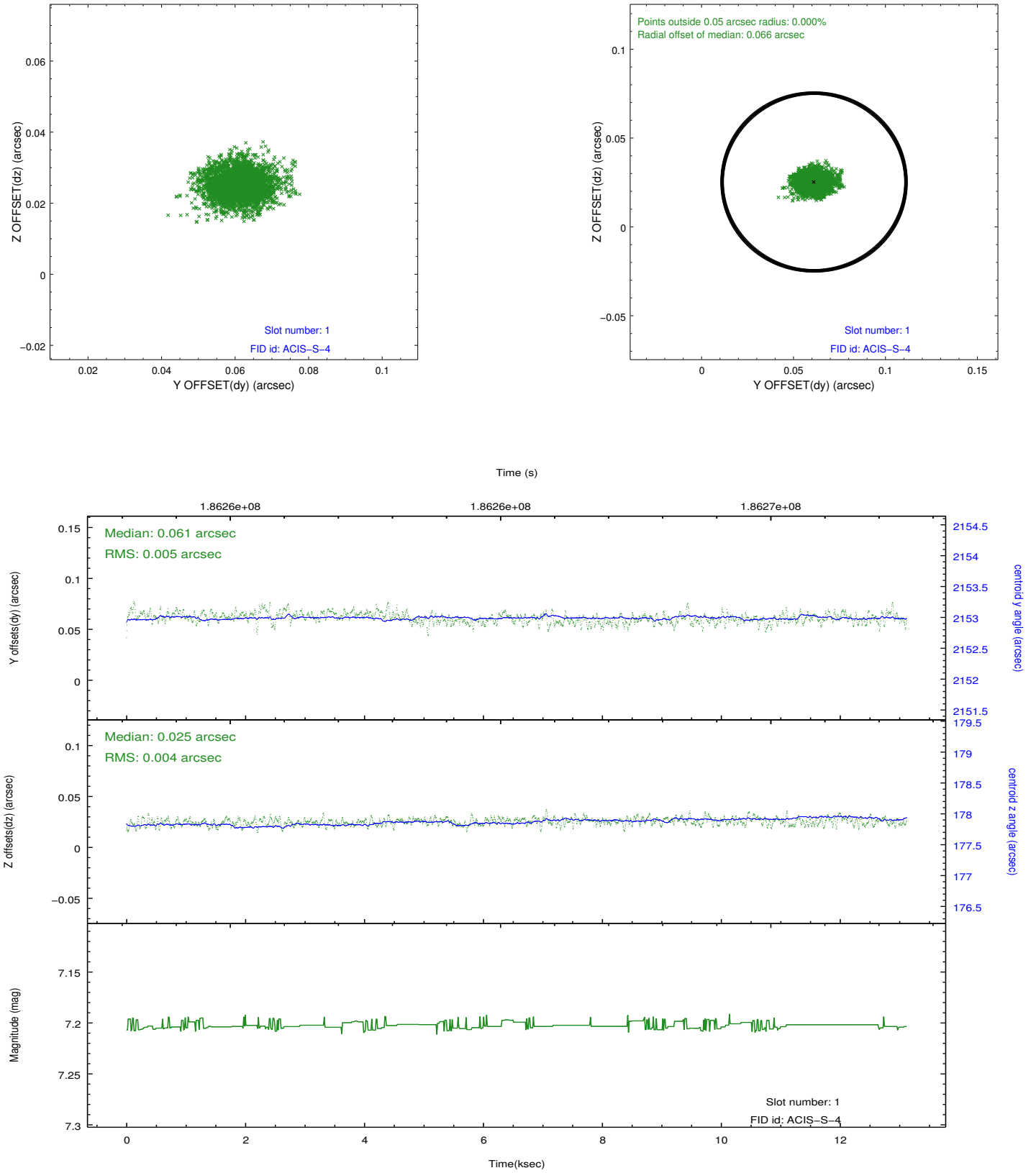


2.5 FID Slots

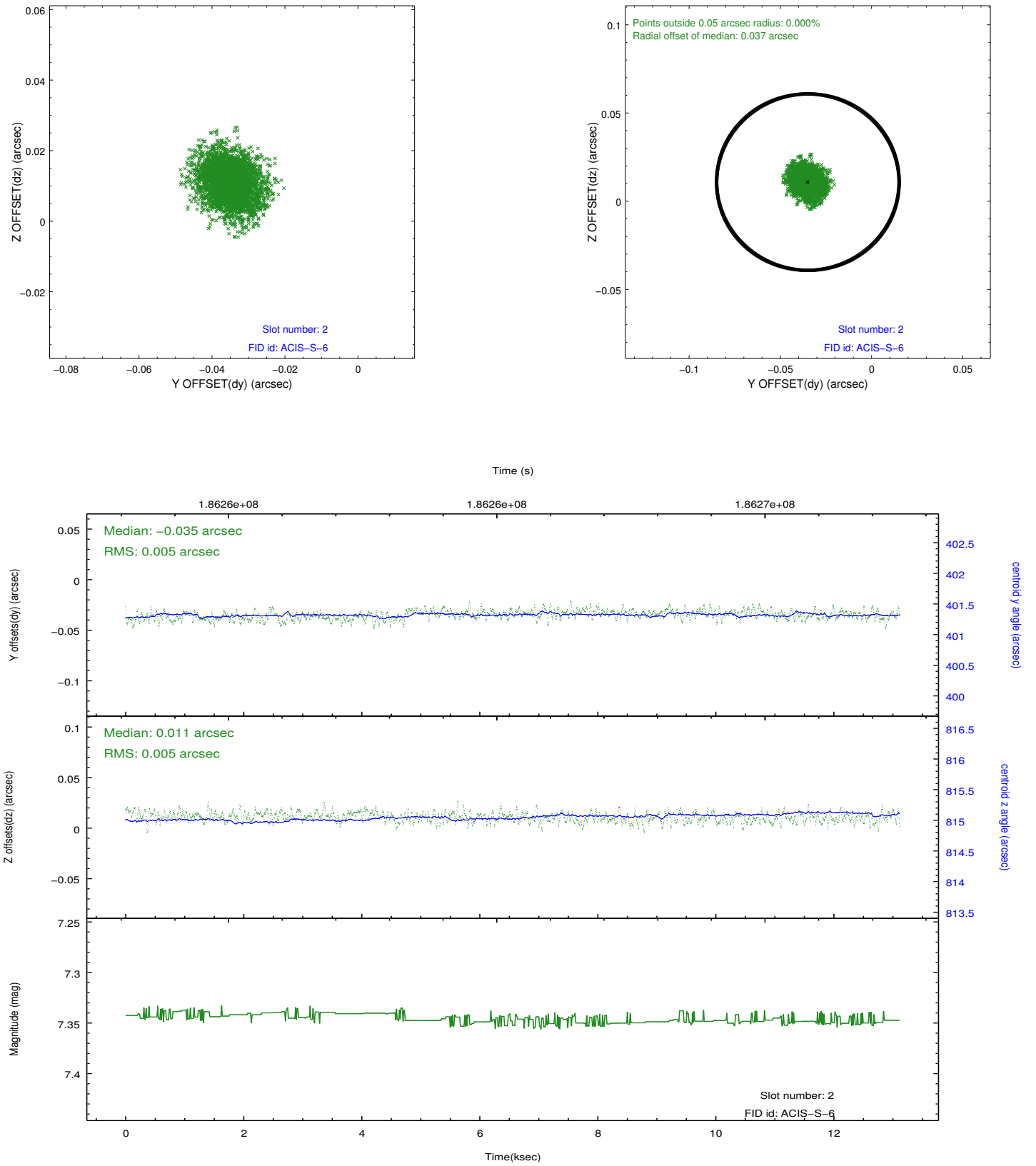
2.5.1 Slot 0



2.5.2 Slot 1



2.5.3 Slot 2



A Summary

A.1 Status

V&V Scientist	Jen Lauer
V&V Date (YYYY-MM-DD)	2012.12.02
V&V Edition	1
V&V Disposition and Status	OK
V&V Charge Time	12.824

A.2 Comments