

V&V Reference Report

L2 ASCDS Version : 7.6.7.2

Observation 4806 - L2 Version 001
Chandra X-Ray Center

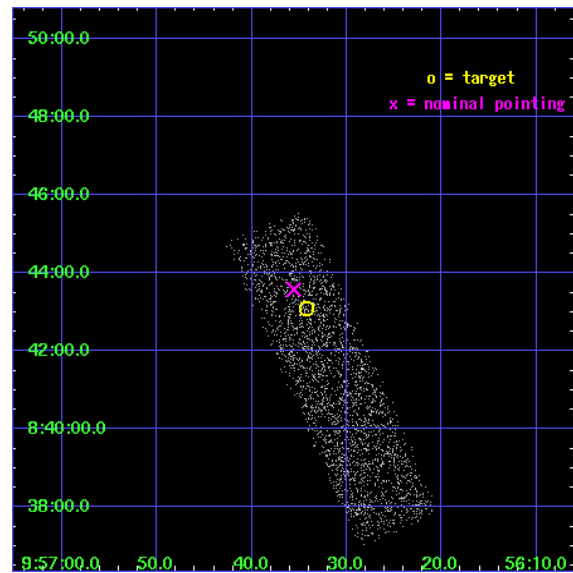
L2 Processing Date : Jun 8 2006

Contents

1	Front	2
2	OBI	3
2.1	OBI	3
2.1.1	Images	3
2.1.2	Bias	3
2.1.3	Parameters	4
2.1.4	Events	4
2.2	Compared Parameters	5
2.3	Aspect	6
2.4	Star Slots	9
2.4.1	Slot 3	9
2.4.2	Slot 4	10
2.4.3	Slot 5	11
2.4.4	Slot 6	12
2.4.5	Slot 7	13
2.5	FID Slots	14
2.5.1	Slot 0	14
2.5.2	Slot 1	15
2.5.3	Slot 2	16
3	Point Sources	17
A	Summary	18
A.1	Status	18
A.2	Comments	18

1 Front

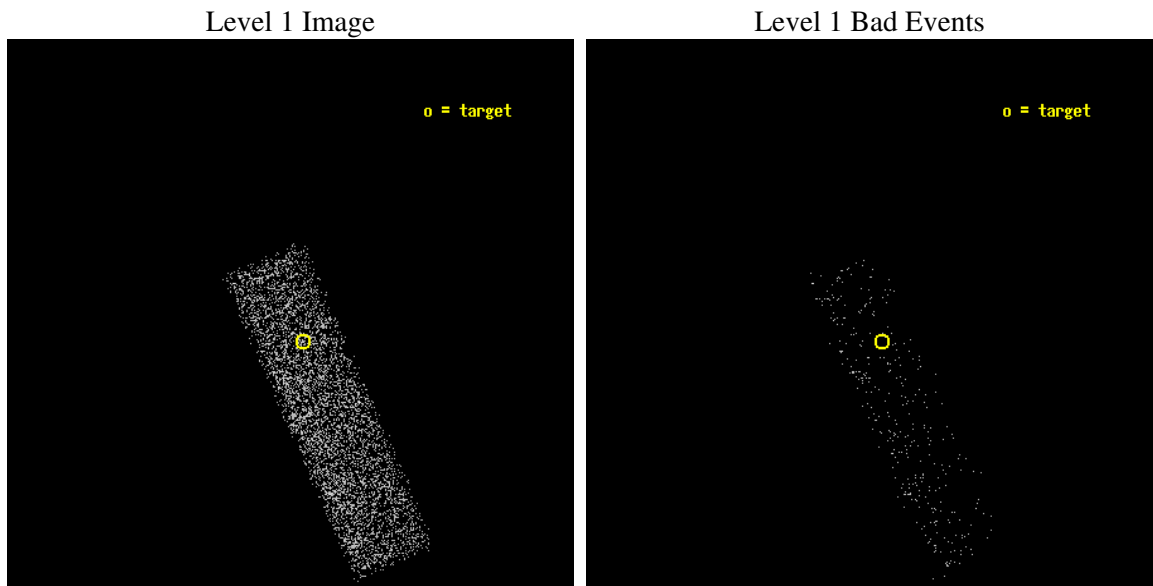
seq_num	700889
obs_id	4806
title	Unveiling the engine powering OH Gigamaser sources through X-rays. A well-defined Chandra survey
observer	Dr. Cristian Vignali
object	IRAS FSC 09539+0857
dtcycle	0
cycle	P
ra_targ	149.142917
dec_targ	8.718361
ra_nom	149.14829219882
dec_nom	8.7263881085317
roll_nom	66.252612589041
revision	2
ontime	5053.6000753045
livetime	4807.0009277129
ontime7	5053.6000753045
l2events	2897



2 OBI

2.1 OBI

2.1.1 Images



2.1.2 Bias

Chip 7



2.1.3 Parameters

obi_num	0
ascdsver	7.6.7.2
caldbver	3.2.2
date	2006-06-08T05:30:50
revision	2

sched_exp_time	4500.000000
ontime	5330.4626520872
ontime7	5330.4626520872
l1events	6320

2.1.4 Events

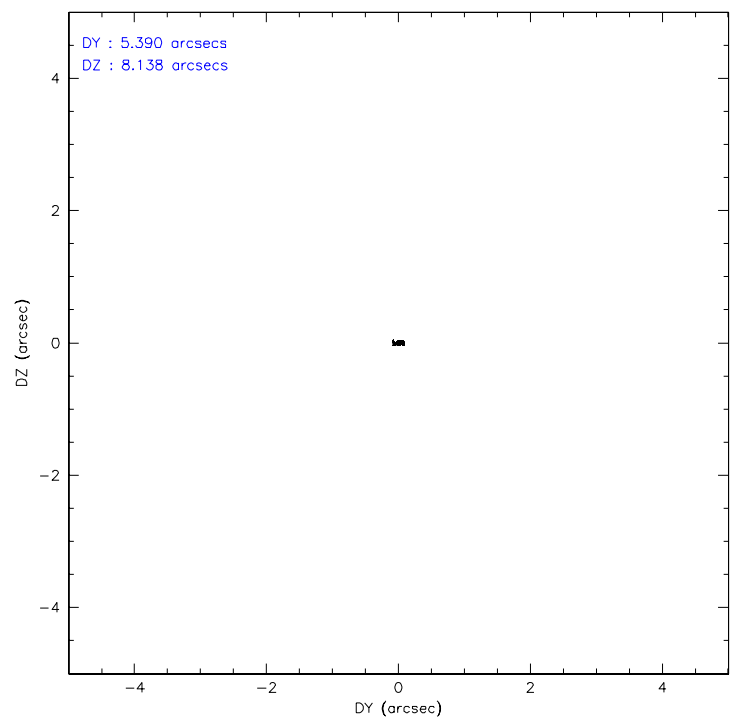
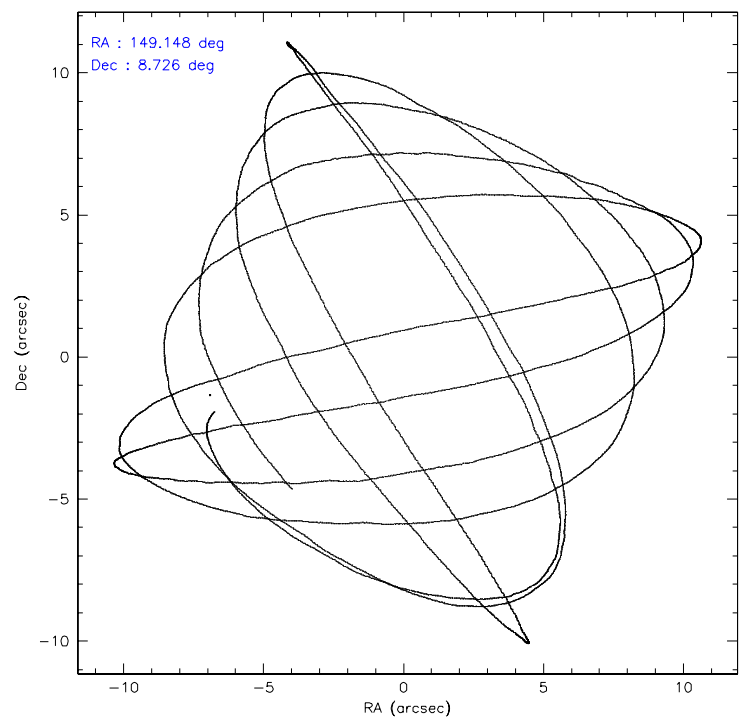
	ccd 7
level 1 events	6320
rejected events	3313
rejected %	52%

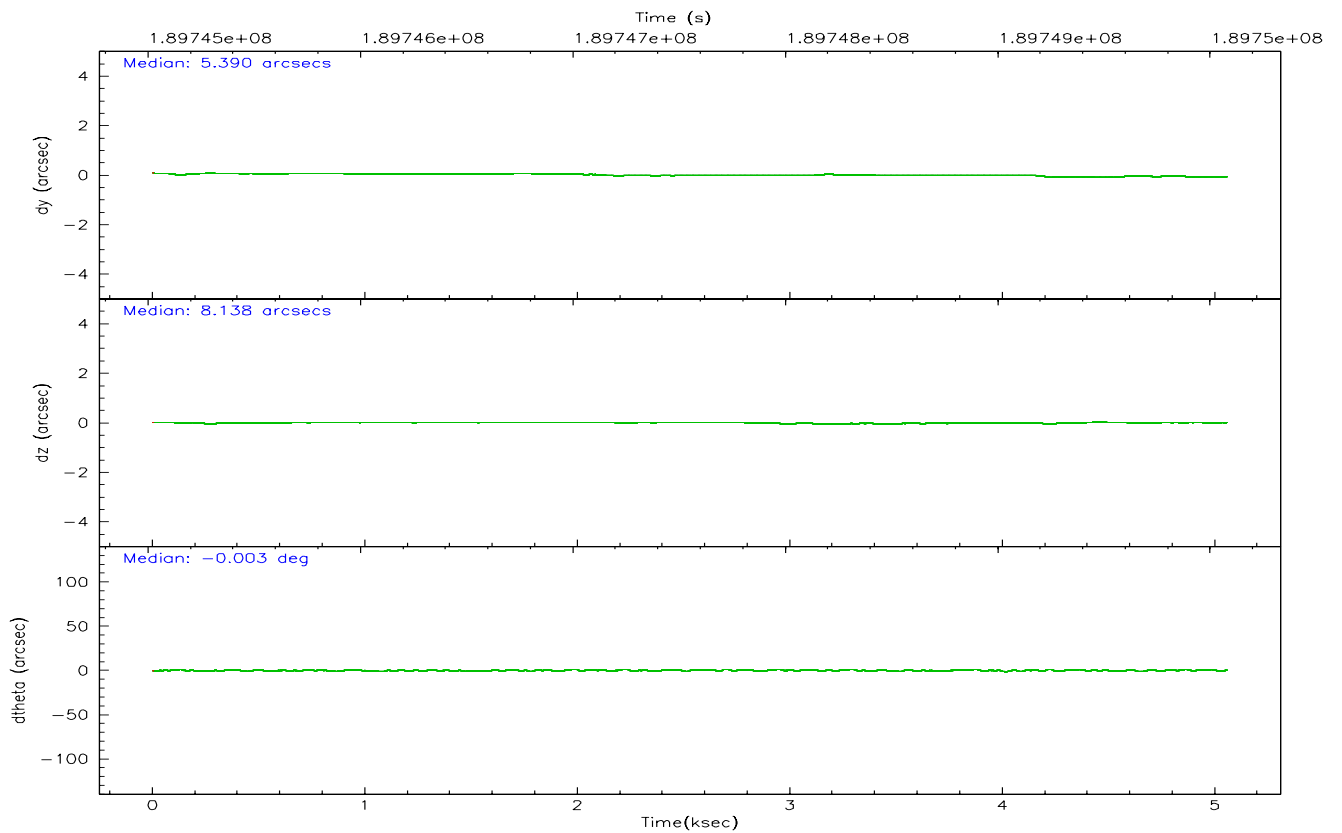
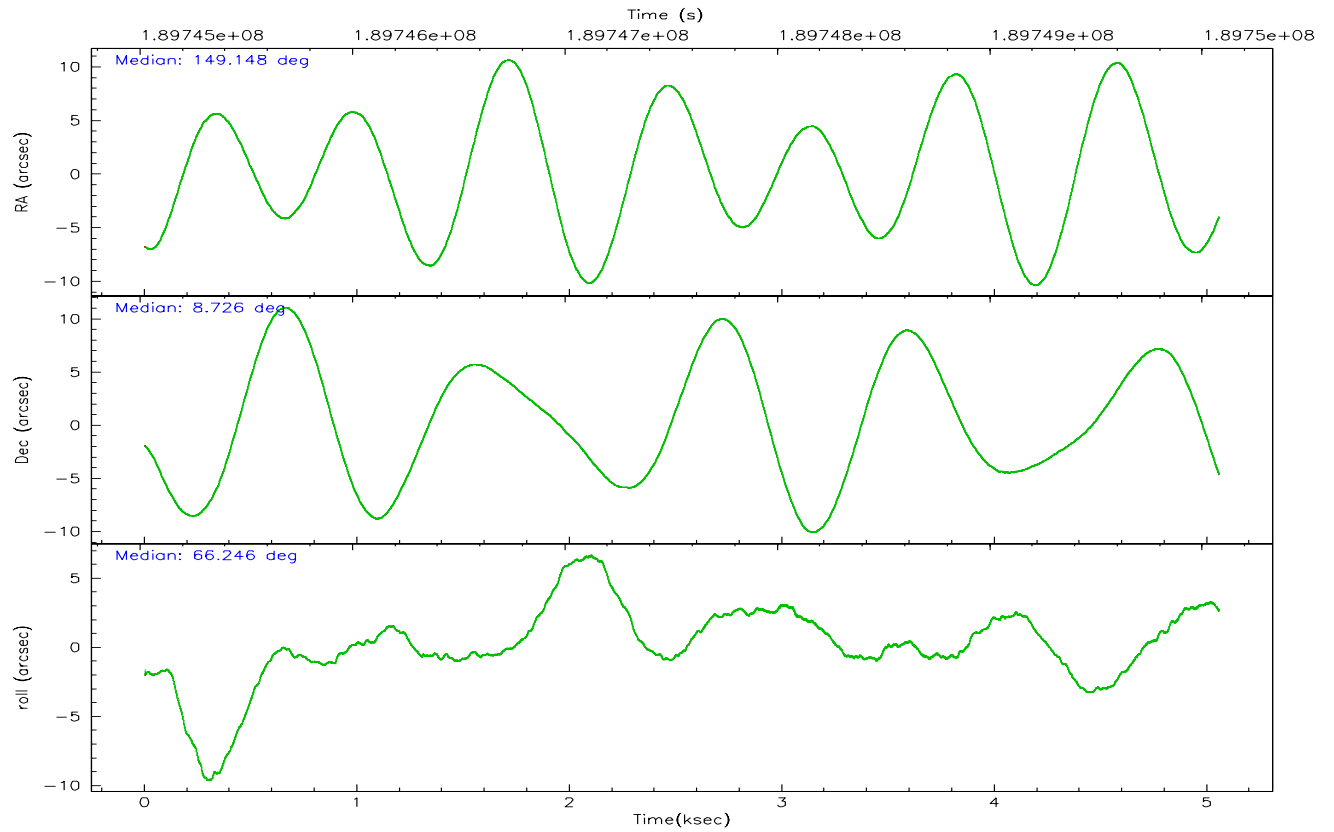
	ccd 7
grade 0 events	240
	3%
grade 1 events	6
	0%
grade 2 events	746
	11%
grade 3 events	319
	5%
grade 4 events	320
	5%
grade 5 events	560
	8%
grade 6 events	1524
	24%
grade 7 events	2605
	41%

2.2 Compared Parameters

Parameter	Planned	Actual	Parameter	Planned	Actual
Instrument	ACIS	ACIS	Obspar format version number	6	6
Detector	ACIS-7	ACIS-7	Obspar file type	PREDICTED	ACTUAL
Grating	NONE	NONE	Obspar update status	NONE	UPDATED
Data mode	FAINT	FAINT	On-chip summing requested	N	N
Observation mode	POINTING	POINTING	Subarray requested	1/4	1/4
Pointing RA	149.151732	149.1482921988206	Subarray start row	0	385
Pointing Dec	8.699366	8.726388108531719	Subarray row count	1024	256
Pointing Roll	66.095461	66.25261258904072	Alternating exposures requested	N	N
SIM focus pos (mm)	-0.684267	-0.6828225247311905	Primary exposure time	0.000000	0.8
SIM defocus (mm)	0	0.001444936568705701			
SIM translation stage pos (mm)	-190.132523	-190.1400660498719			
SIM translation stage offset (mm)	0	0.00754346686406393			
Observation start time	189745583.184000	189744435.55468			
Observation start date	2004-01-06T03:05:19	2004-01-06T02:47:15			
Observation end time	189750083.184000	189750927.39246			
Observation end date	2004-01-06T04:20:19	2004-01-06T04:35:27			
Read mode	TIMED	TIMED			

2.3 Aspect



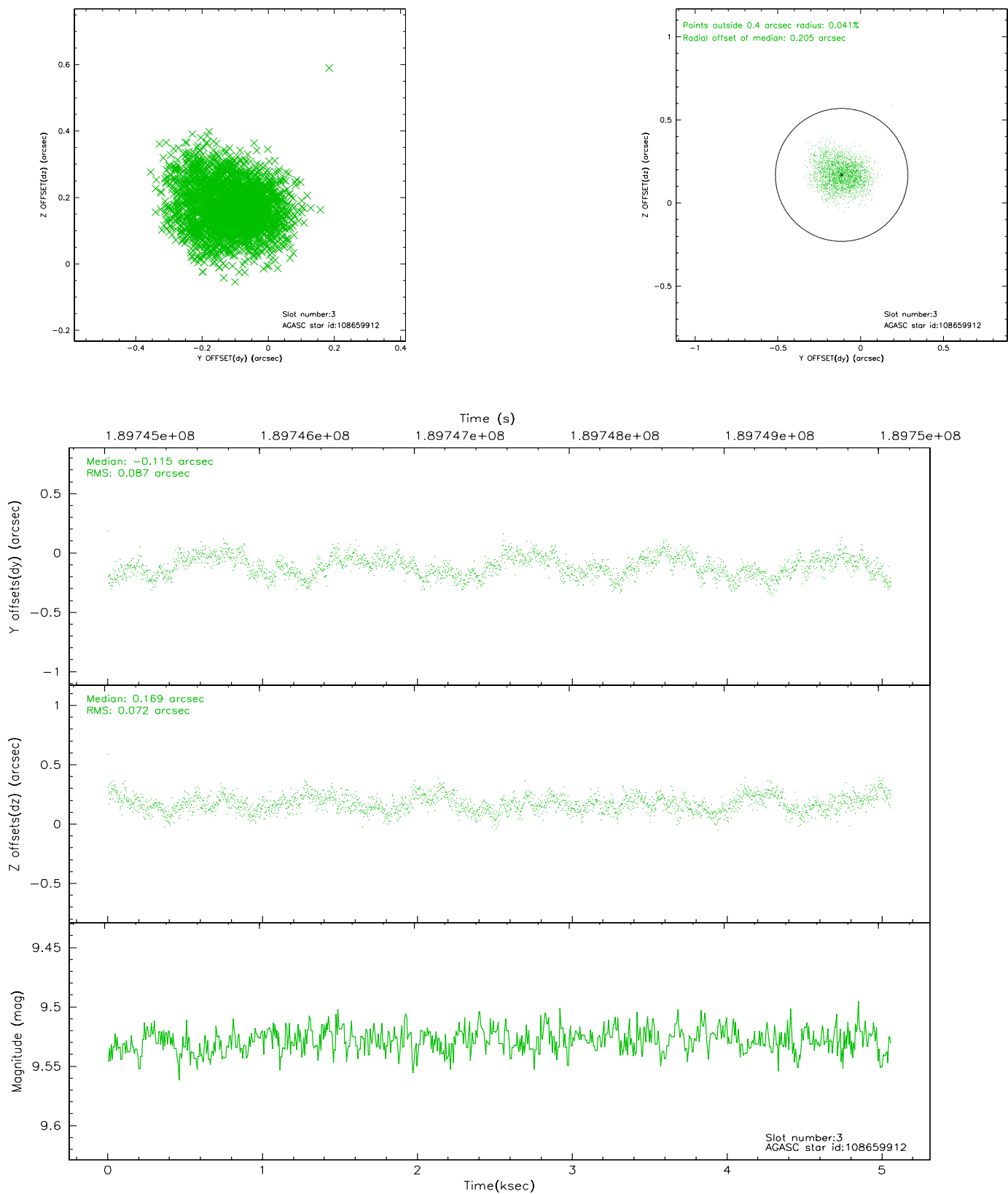


Slot Statistics

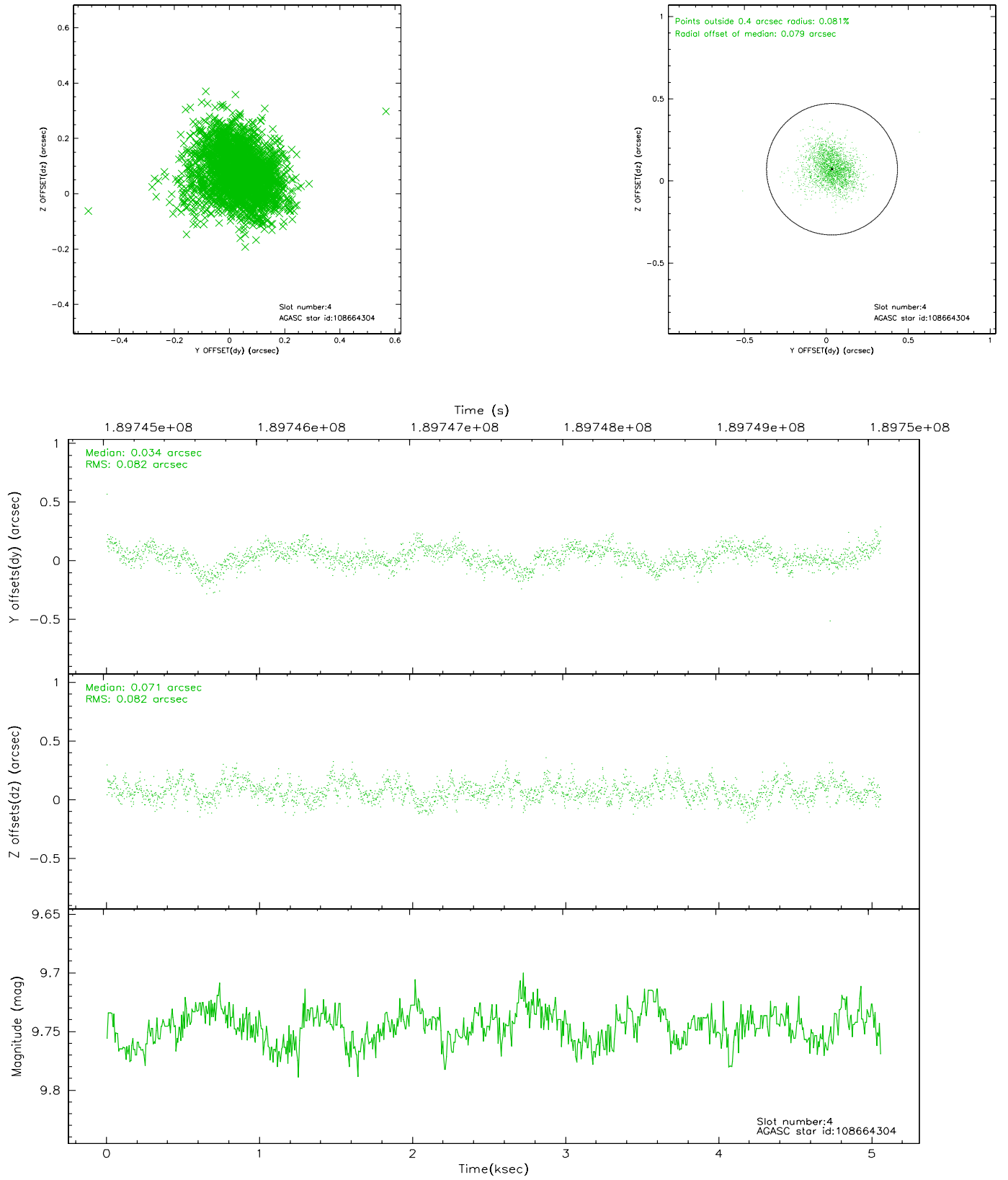
slot	status	id	mag	n_pts	med_dy	med_dz	dr1	dr2	ra	dec	mean_y	mean_z
0	FID	ACIS-S-2	7.10	1233	-0.053	-0.023	0.005	0.009	0.000000	0.000000	-758.18	-1729.34
1	FID	ACIS-S-4	7.21	1234	0.025	0.040	0.006	0.009	0.000000	0.000000	2154.66	177.92
2	FID	ACIS-S-6	7.35	1233	-0.000	-0.011	0.007	0.011	0.000000	0.000000	405.44	816.66
3	GUIDE	108659912	9.53	2466	-0.115	0.169	0.122	0.192	149.837569	8.833912	1433.53	-2032.95
4	GUIDE	108664304	9.75	2463	0.034	0.071	0.122	0.203	149.423023	8.300628	-919.28	-1465.94
5	GUIDE	108667856	9.41	2466	0.153	-0.201	0.111	0.179	148.333883	8.486940	-1876.49	2352.75
6	GUIDE	108658792	9.92	2443	-0.087	-0.110	0.133	0.208	149.195508	9.417749	2426.71	907.02
7	GUIDE	108662208	9.75	2459	0.009	0.064	0.136	0.223	149.939142	9.089046	2420.92	-1988.95

2.4 Star Slots

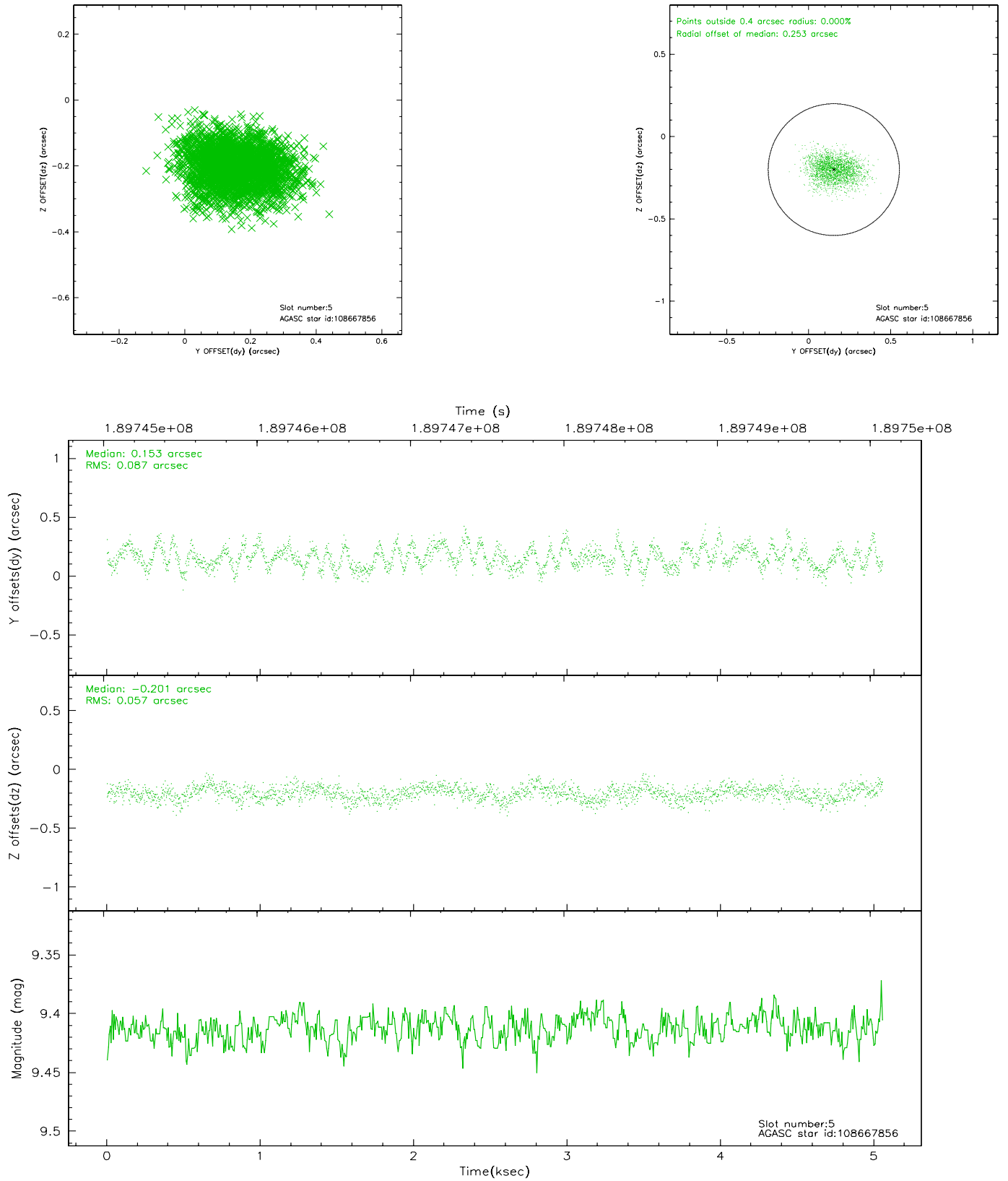
2.4.1 Slot 3



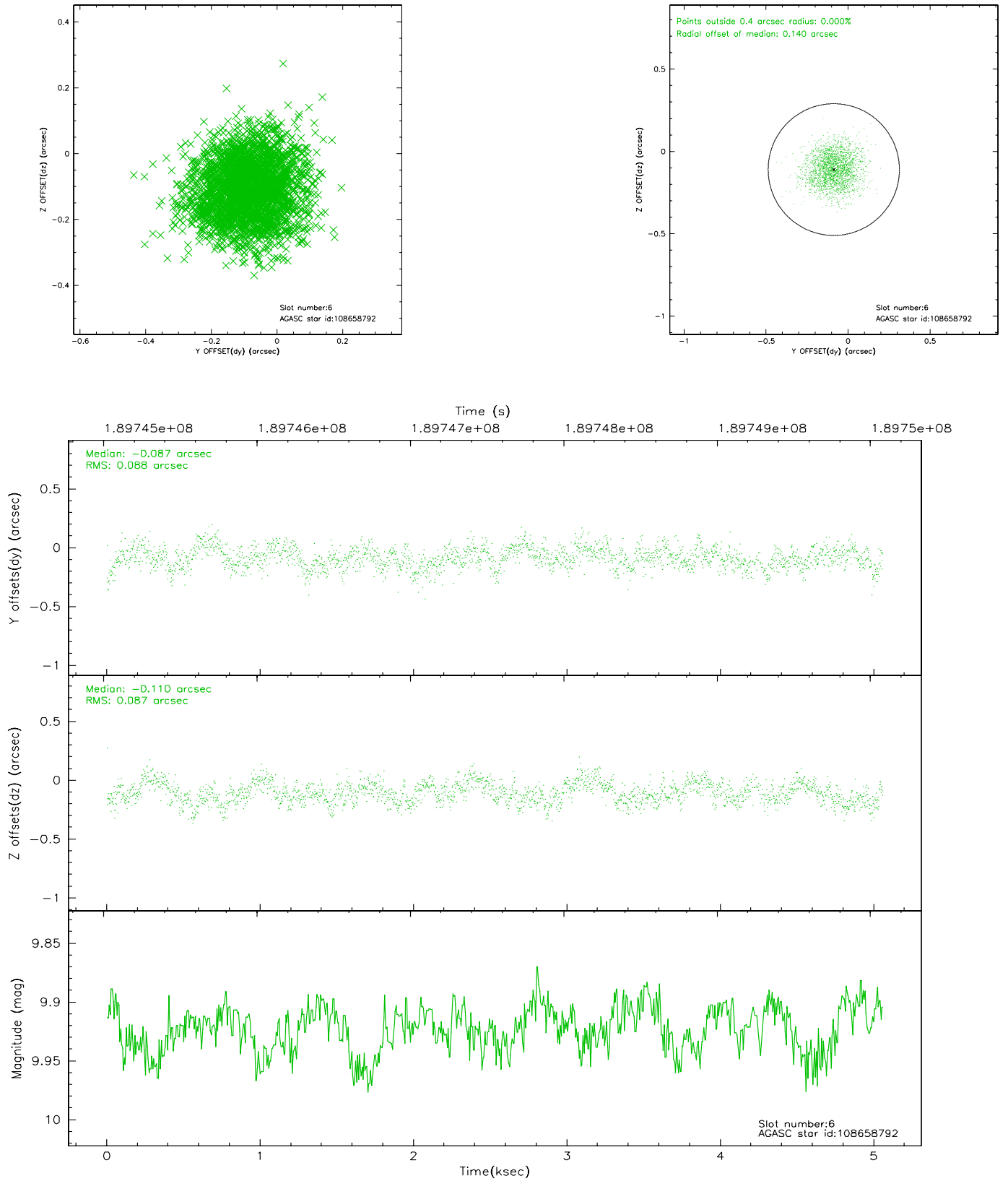
2.4.2 Slot 4



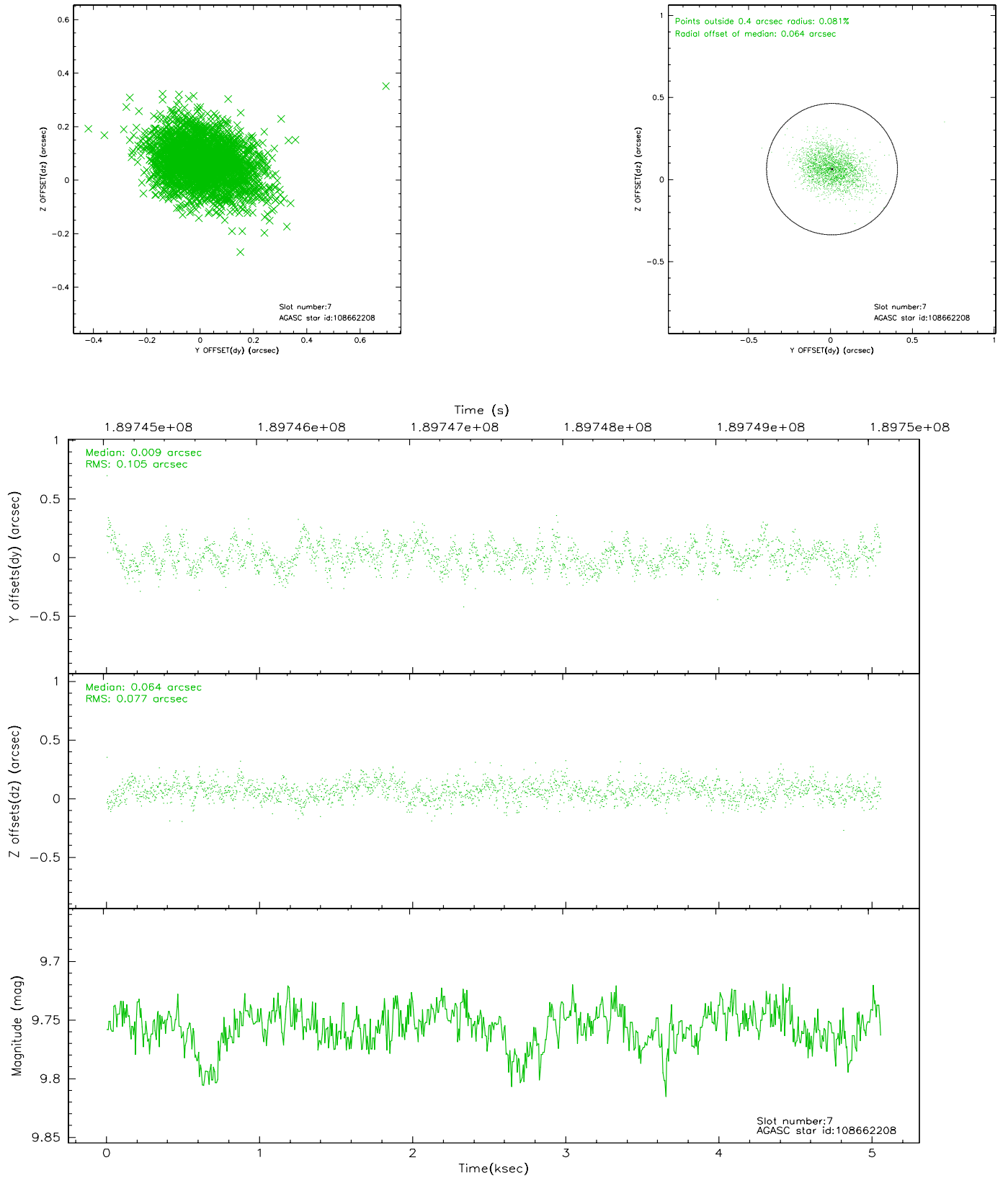
2.4.3 Slot 5



2.4.4 Slot 6

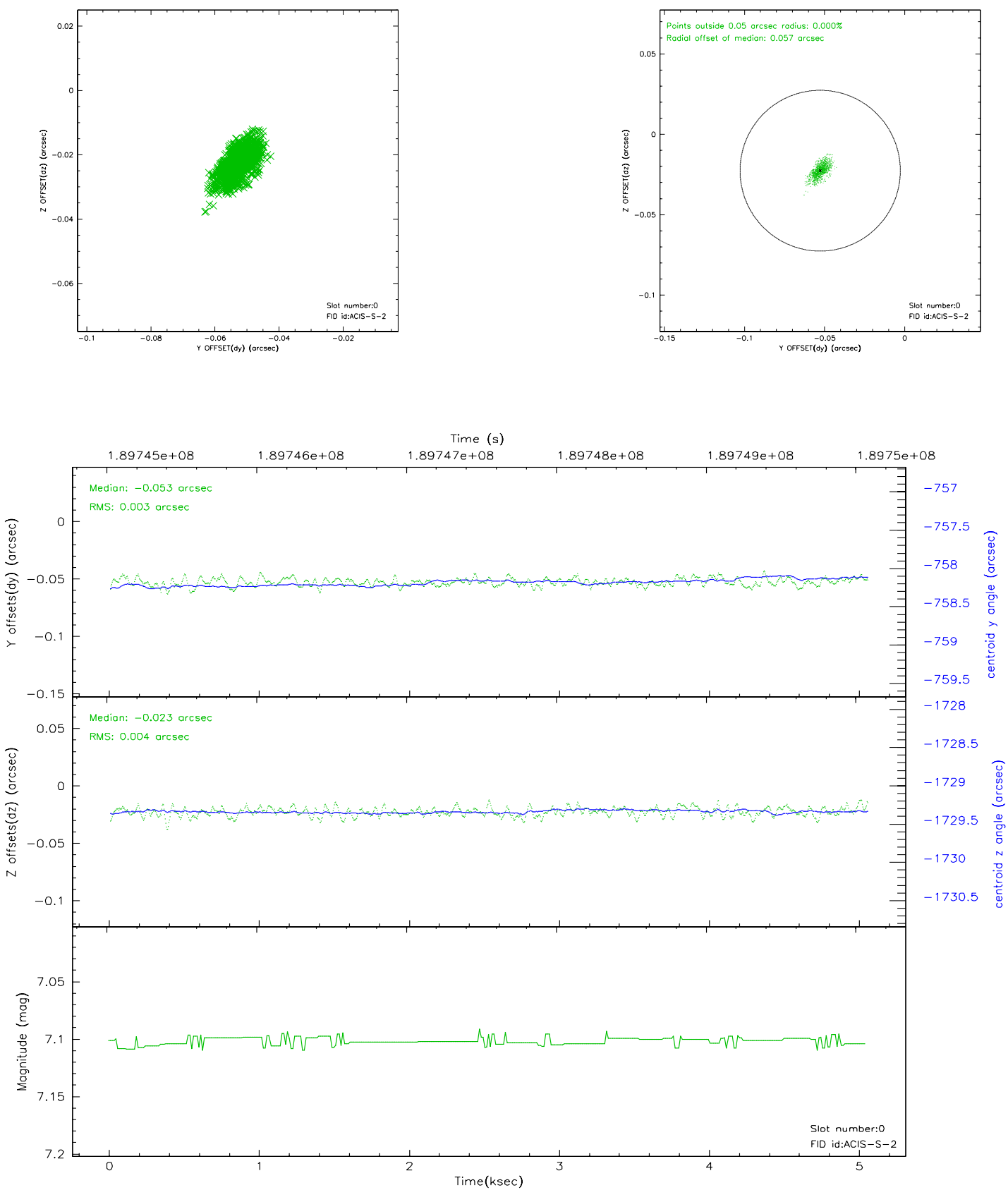


2.4.5 Slot 7

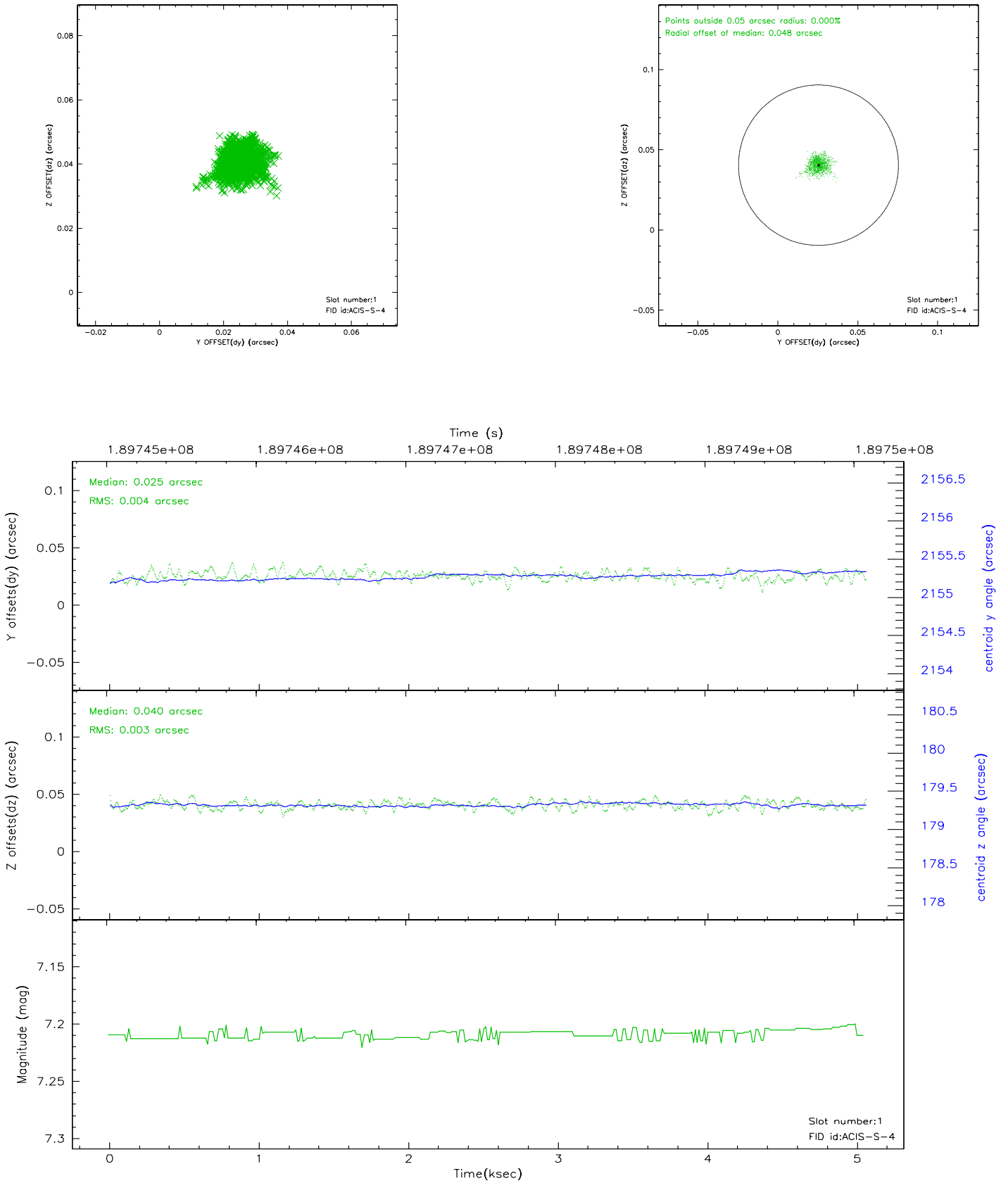


2.5 FID Slots

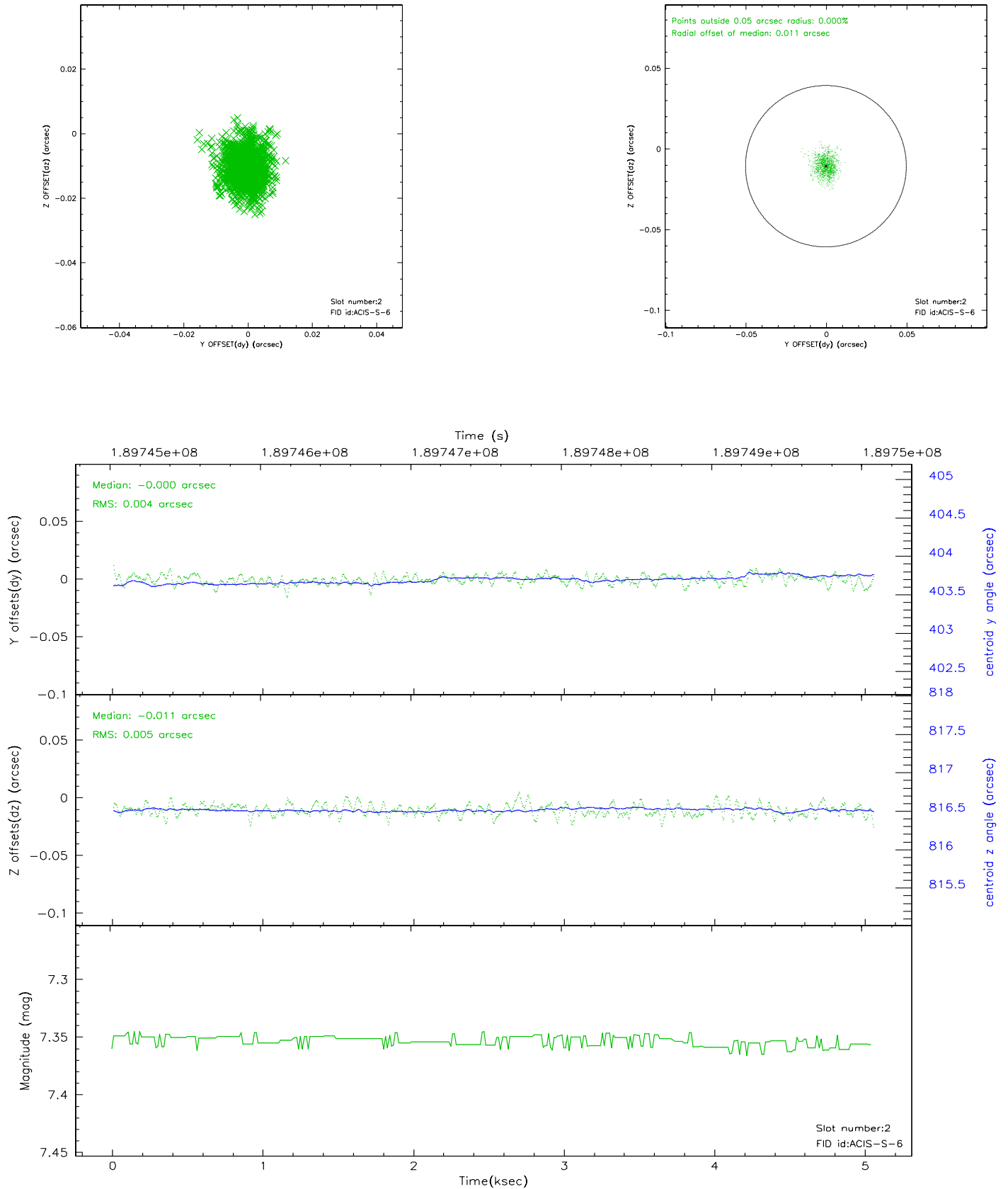
2.5.1 Slot 0



2.5.2 Slot 1



2.5.3 Slot 2



3 Point Sources

A Summary

A.1 Status

V&V Scientist	Joy Nichols
V&V Date (YYYY-MM-DD)	2006.06.08
V&V Edition	1
V&V Disposition and Status	OK
V&V Charge Time	5.053

A.2 Comments

Analysis should use Level 1 event file with care in removing bad grades.

The only potential source near the target position has been marked as bad data.