

# V&V Reference Report

## L2 ASCDS Version : 7.6.7.2

Observation 4778 - L2 Version 001  
Chandra X-Ray Center

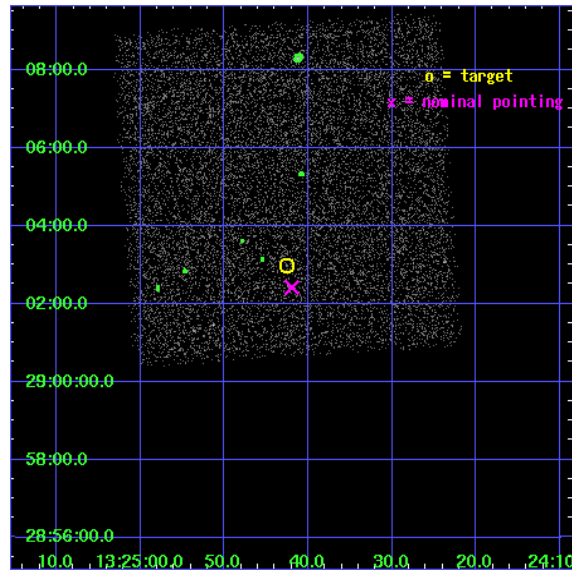
L2 Processing Date : Apr 26 2006

## Contents

<b>1</b>	<b>Front</b>	<b>2</b>
<b>2</b>	<b>OBI</b>	<b>3</b>
2.1	OBI . . . . .	3
2.1.1	Images . . . . .	3
2.1.2	Bias . . . . .	3
2.1.3	Parameters . . . . .	4
2.1.4	Events . . . . .	4
2.2	Compared Parameters . . . . .	5
2.3	Aspect . . . . .	6
2.4	Star Slots . . . . .	9
2.4.1	Slot 3 . . . . .	9
2.4.2	Slot 4 . . . . .	10
2.4.3	Slot 5 . . . . .	11
2.4.4	Slot 6 . . . . .	12
2.4.5	Slot 7 . . . . .	13
2.5	FID Slots . . . . .	14
2.5.1	Slot 0 . . . . .	14
2.5.2	Slot 1 . . . . .	15
2.5.3	Slot 2 . . . . .	16
<b>3</b>	<b>Point Sources</b>	<b>17</b>
<b>A</b>	<b>Summary</b>	<b>18</b>
A.1	Status . . . . .	18
A.2	Comments . . . . .	18

# 1 Front

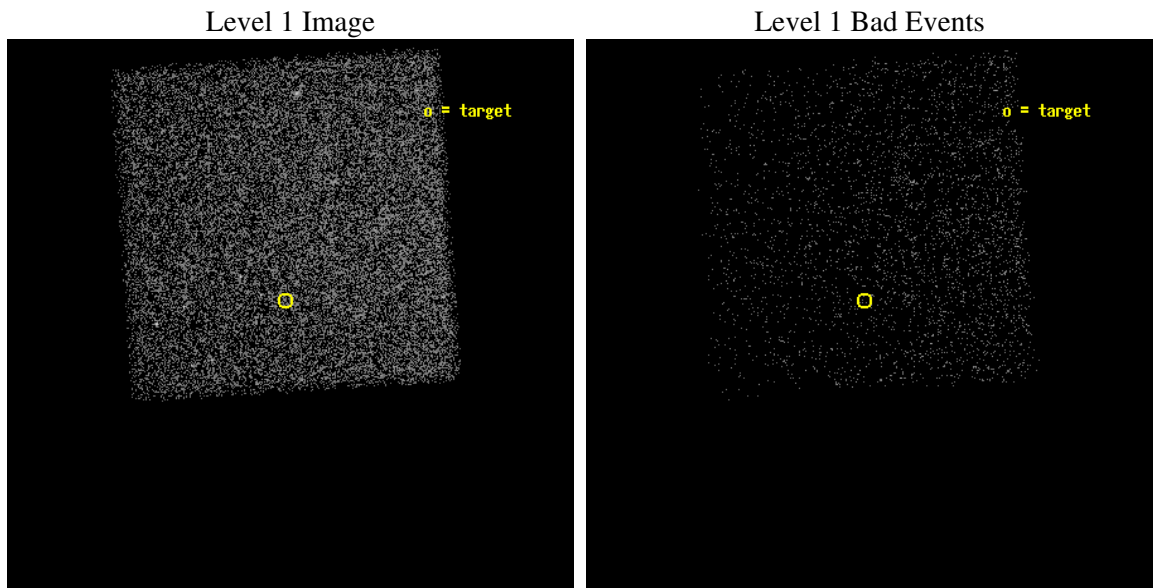
seq_num	700861
obs_id	4778
title	Anchoring the AGN X-ray Luminosity Function
observer	Dr. JOHN SALZER
object	F1320-226
dtcycle	0
cycle	P
ra_targ	201.1775
dec_targ	29.049667
ra_nom	201.17487546447
dec_nom	29.040207668217
roll_nom	266.21421958423
revision	2
ontime	4146.0
livetime	4090.0481414253
ontime7	4146.0
l2events	14541



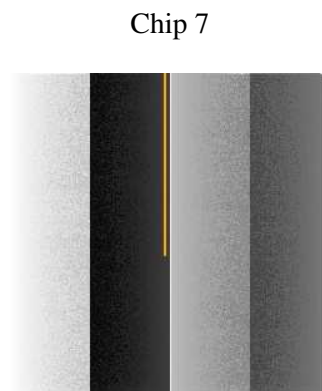
## 2 OBI

### 2.1 OBI

#### 2.1.1 Images



#### 2.1.2 Bias



### 2.1.3 Parameters

obi_num	2
ascdsver	7.6.7.2
caldbver	3.2.1
date	2006-04-26T12:24:56
revision	2

sched_exp_time	4000.000000
ontime	4150.968064785
ontime7	4150.968064785
l1events	37903

### 2.1.4 Events

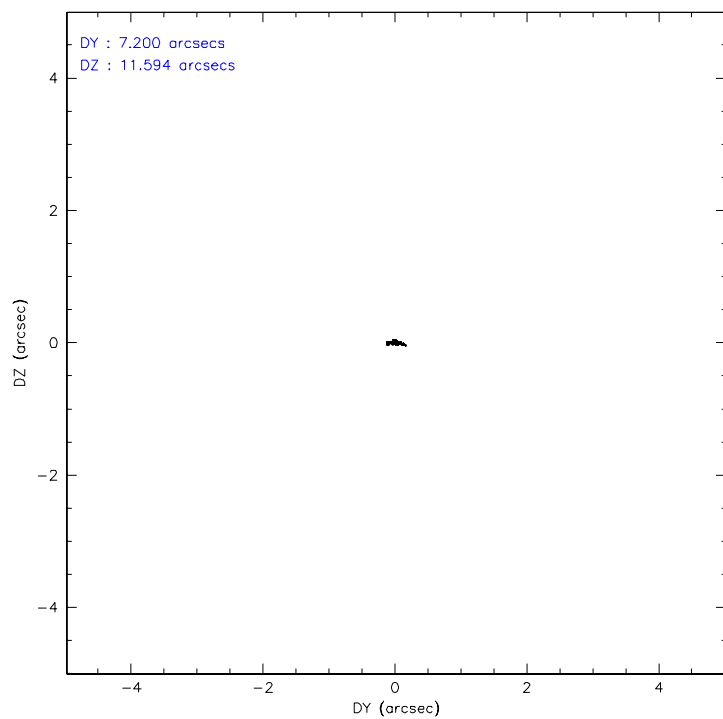
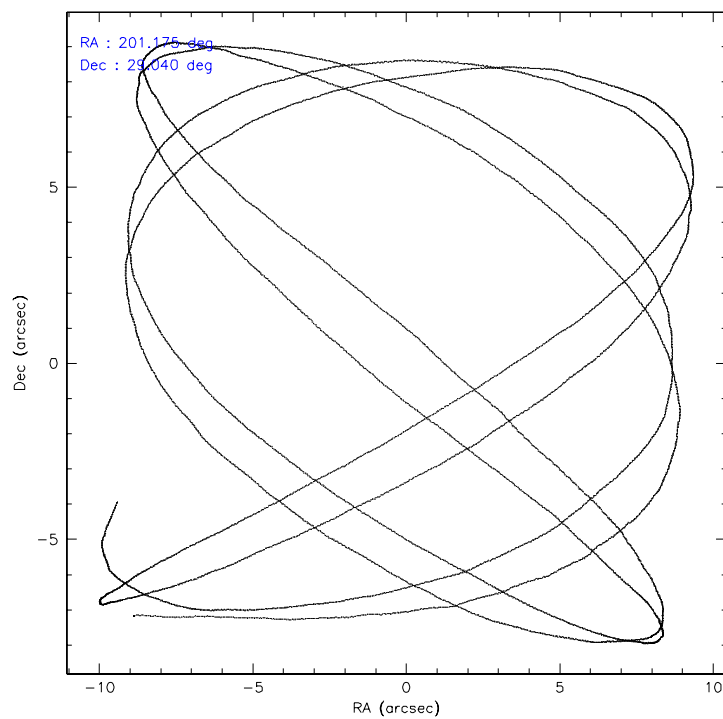
	<b>ccd 7</b>
level 1 events	37903
rejected events	22981
rejected %	60%

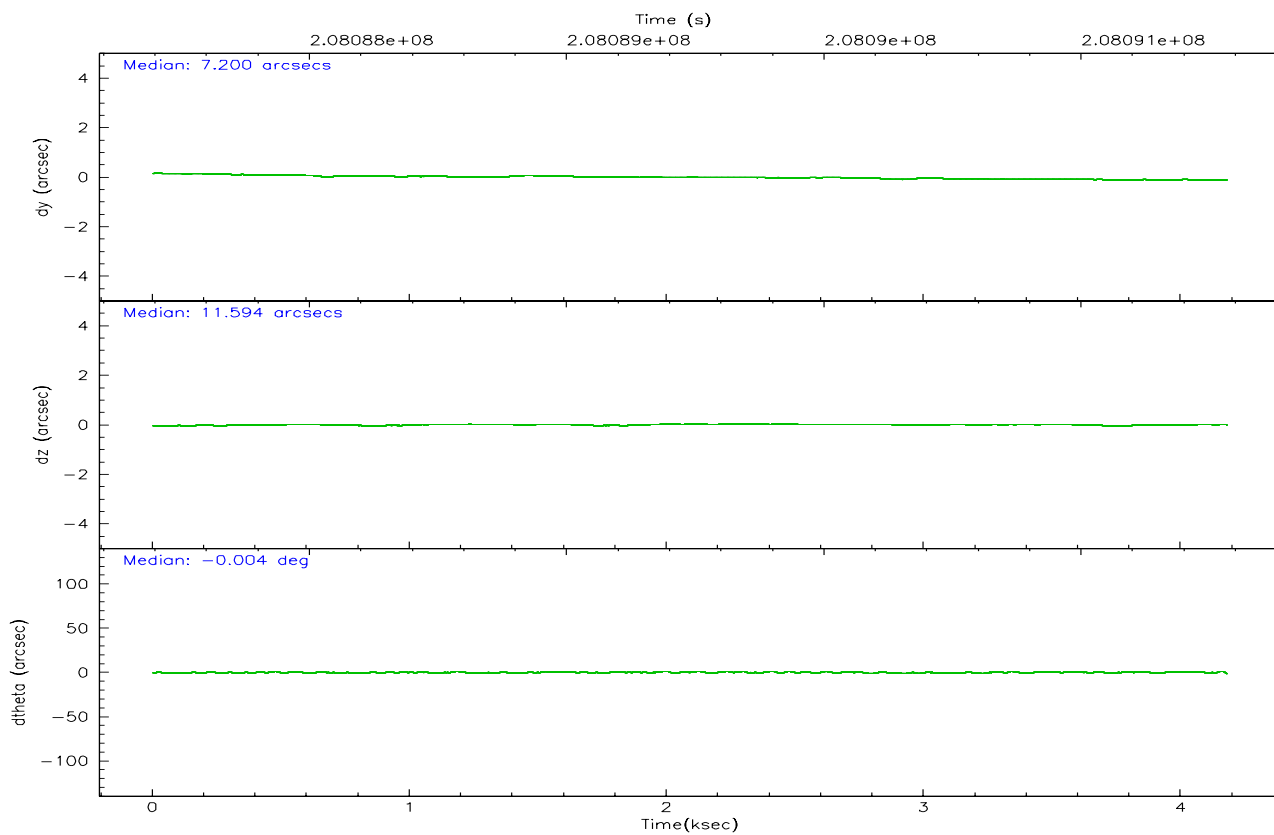
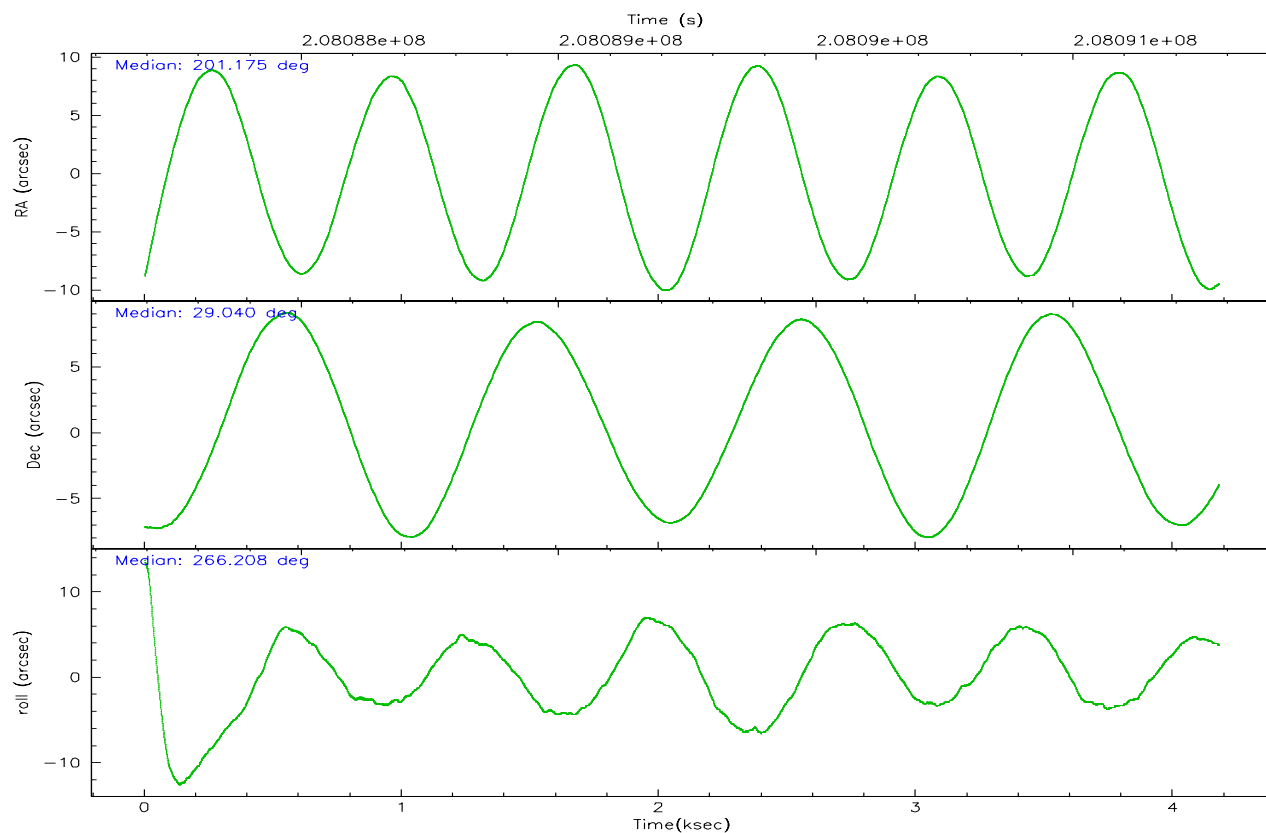
	<b>ccd 7</b>
grade 0 events	962
	2%
grade 1 events	18
	0%
grade 2 events	3663
	9%
grade 3 events	769
	2%
grade 4 events	715
	1%
grade 5 events	2556
	6%
grade 6 events	8830
	23%
grade 7 events	20390
	53%

## 2.2 Compared Parameters

Parameter	Planned	Actual	Parameter	Planned	Actual
Instrument	ACIS	ACIS	Obspar format version number	6	6
Detector	ACIS-7	ACIS-7	Obspar file type	PREDICTED	ACTUAL
Grating	NONE	NONE	Obspar update status	NONE	UPDATED
Data mode	FAINT	FAINT	On-chip summing requested	N	N
Observation mode	POINTING	POINTING	Subarray requested	NONE	NONE
Pointing RA	201.160701	201.1748754644651	Alternating exposures requested	N	N
Pointing Dec	29.064540	29.04020766821737	Primary exposure time	0.000000	3
Pointing Roll	266.064479	266.2142195842304			
SIM focus pos (mm)	-0.684267	-0.6828225247311905			
SIM defocus (mm)	0	0.001444936568705701			
SIM translation stage pos (mm)	-190.132523	-190.1400660498719			
SIM translation stage offset (mm)	0	0.00754346686406393			
Observation start time	208087575.184000	208086862.61231			
Observation start date	2004-08-05T10:05:11	2004-08-05T09:54:22			
Observation end time	208091575.184000	208092343.28756			
Observation end date	2004-08-05T11:11:51	2004-08-05T11:25:43			
Read mode	TIMED	TIMED			

## 2.3 Aspect





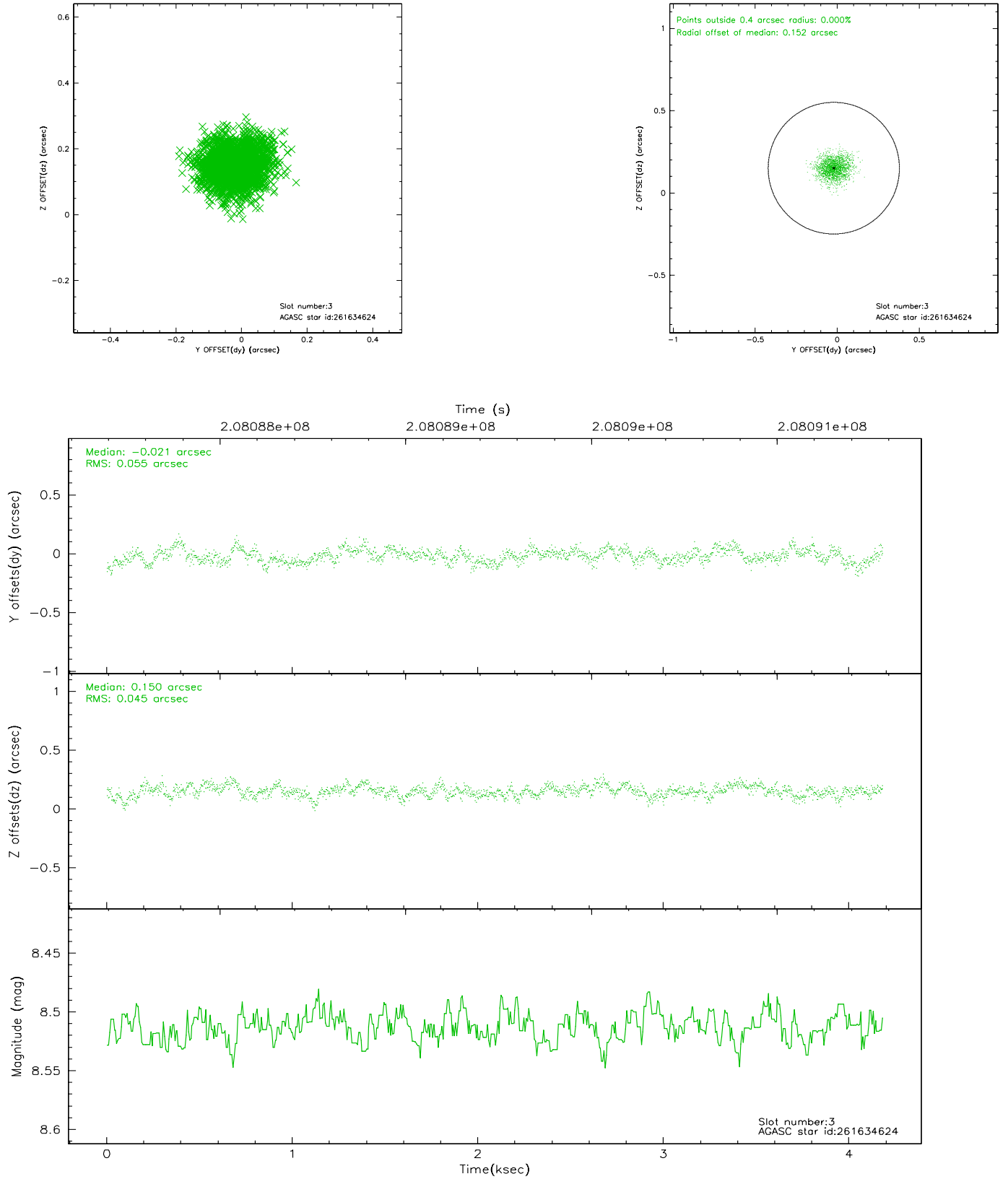
### Slot Statistics

slot	status	id	mag	n_pts	med_dy	med_dz	dr1	dr2	ra	dec	mean_y	mean_z
0	FID	ACIS-S-2	7.10	1020	-0.016	0.013	0.008	0.012	0.000000	0.000000	-759.96	-1732.87
1	FID	ACIS-S-4	7.20	1020	0.011	0.005	0.005	0.009	0.000000	0.000000	2152.66	174.08
2	FID	ACIS-S-5	7.23	1020	-0.025	-0.009	0.007	0.013	0.000000	0.000000	-1810.91	169.41
3	GUIDE	261634624	8.51	2040	-0.021	0.150	0.076	0.123	200.748061	28.522128	2035.57	-1168.02
4	GUIDE	261635072	9.41	2039	0.217	-0.378	0.108	0.189	200.638913	28.520080	2066.52	-1513.14
5	GUIDE	261635280	9.42	2039	0.041	-0.048	0.100	0.165	200.698979	28.862615	823.59	-1403.40
6	GUIDE	262538384	10.08	2038	-0.023	0.155	0.146	0.257	201.107455	29.696999	-2259.67	-323.23
7	GUIDE	262541040	8.12	2039	-0.204	0.128	0.079	0.125	201.795177	28.874292	539.10	2041.94

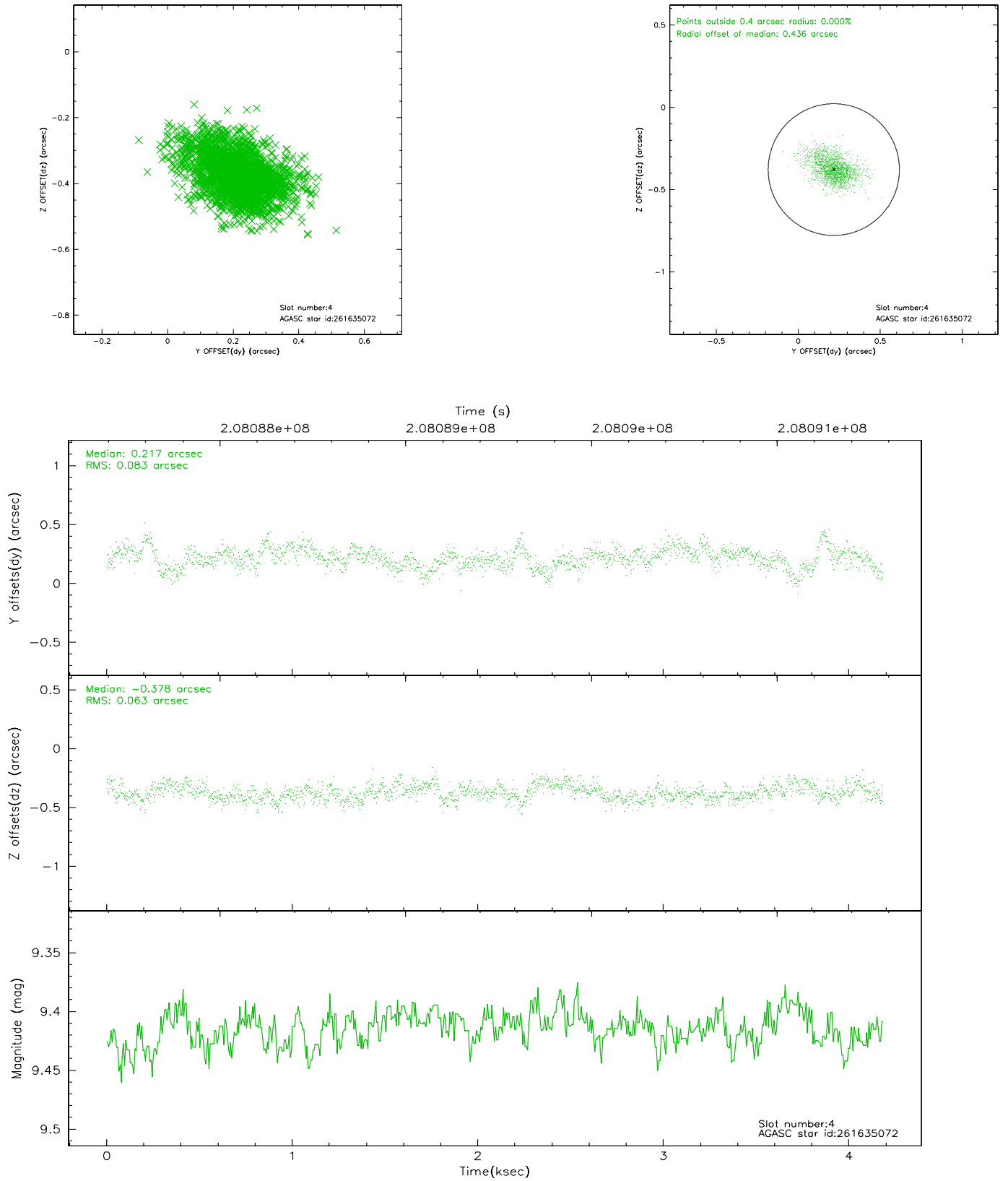


## 2.4 Star Slots

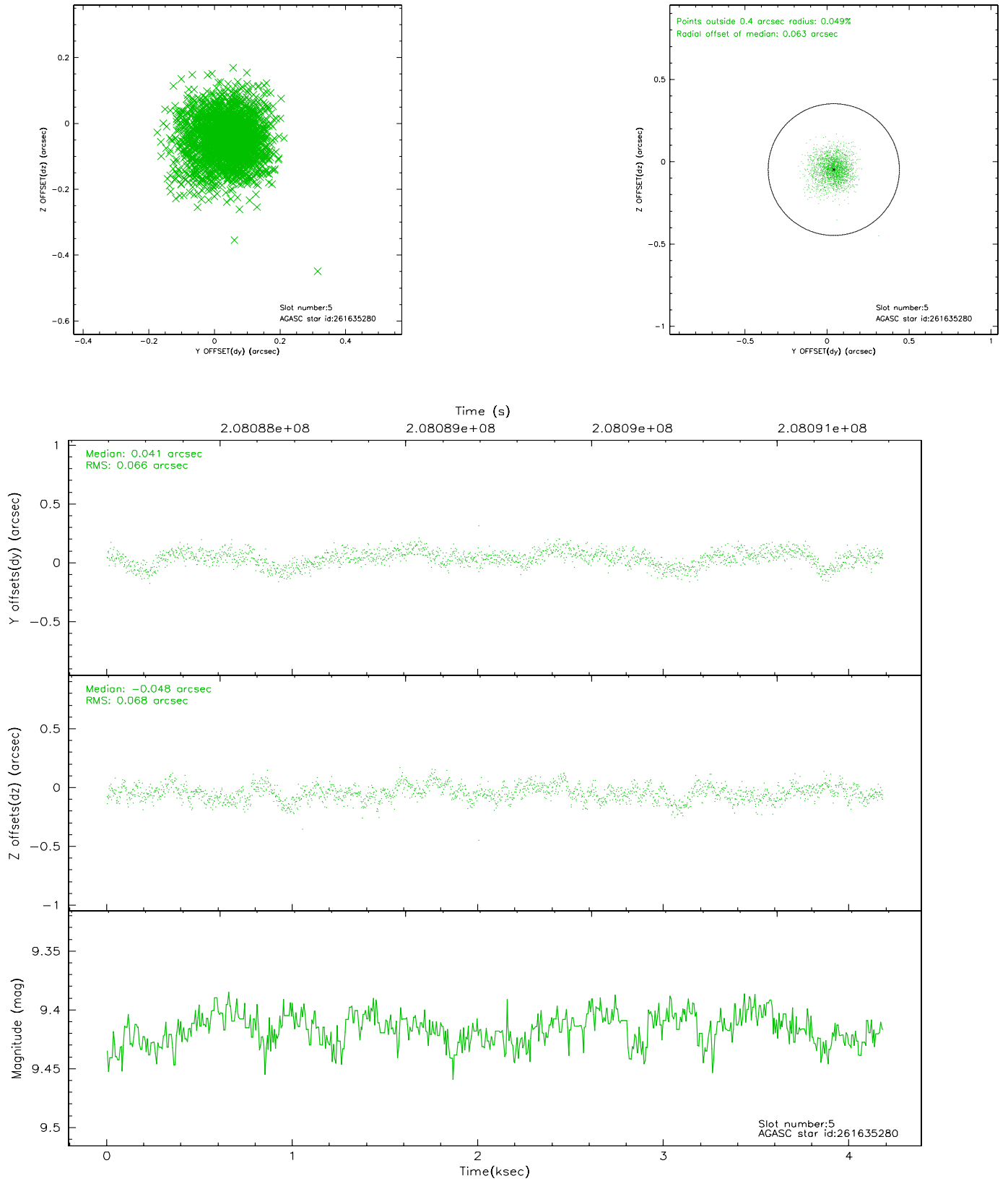
### 2.4.1 Slot 3



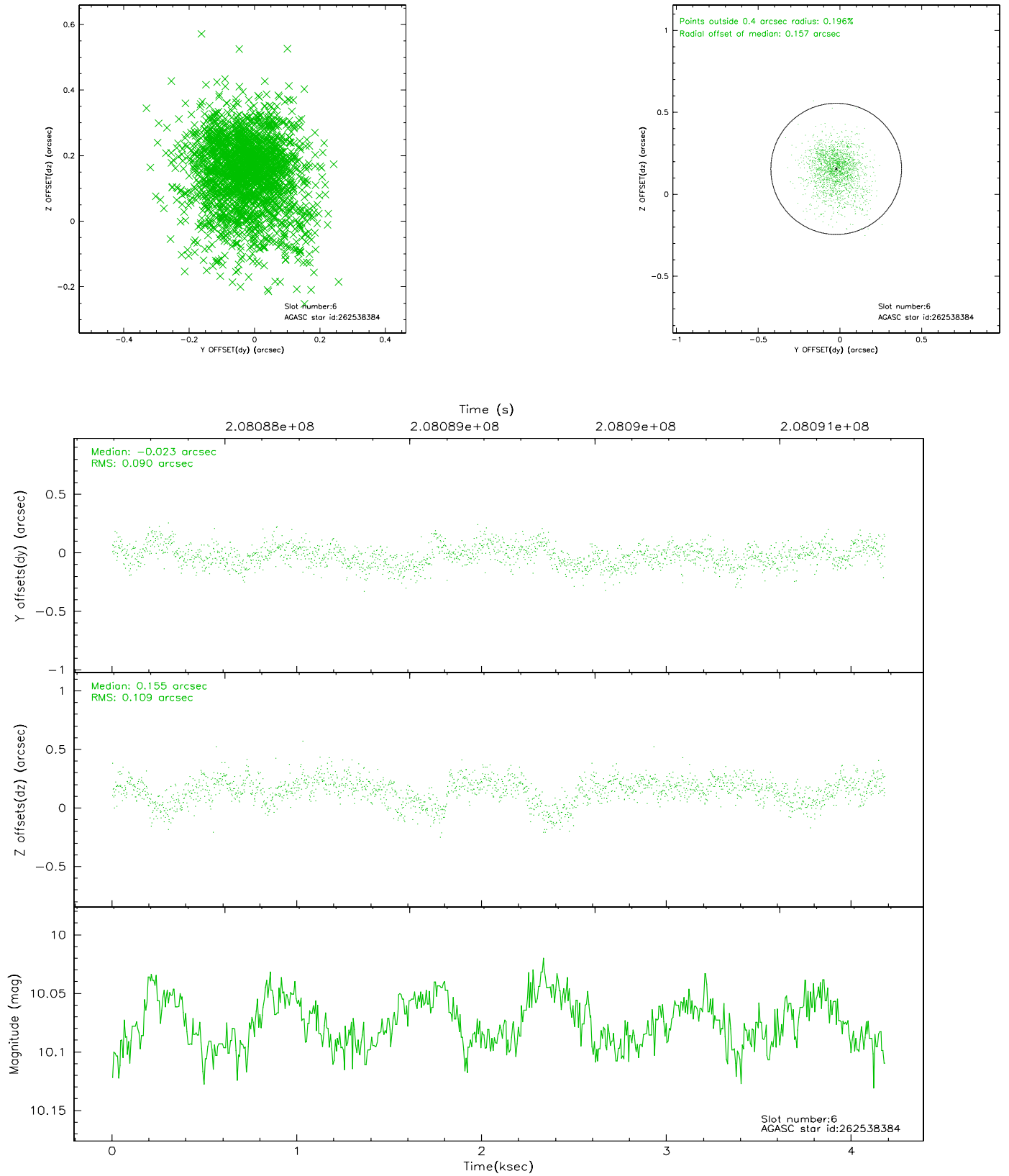
## 2.4.2 Slot 4



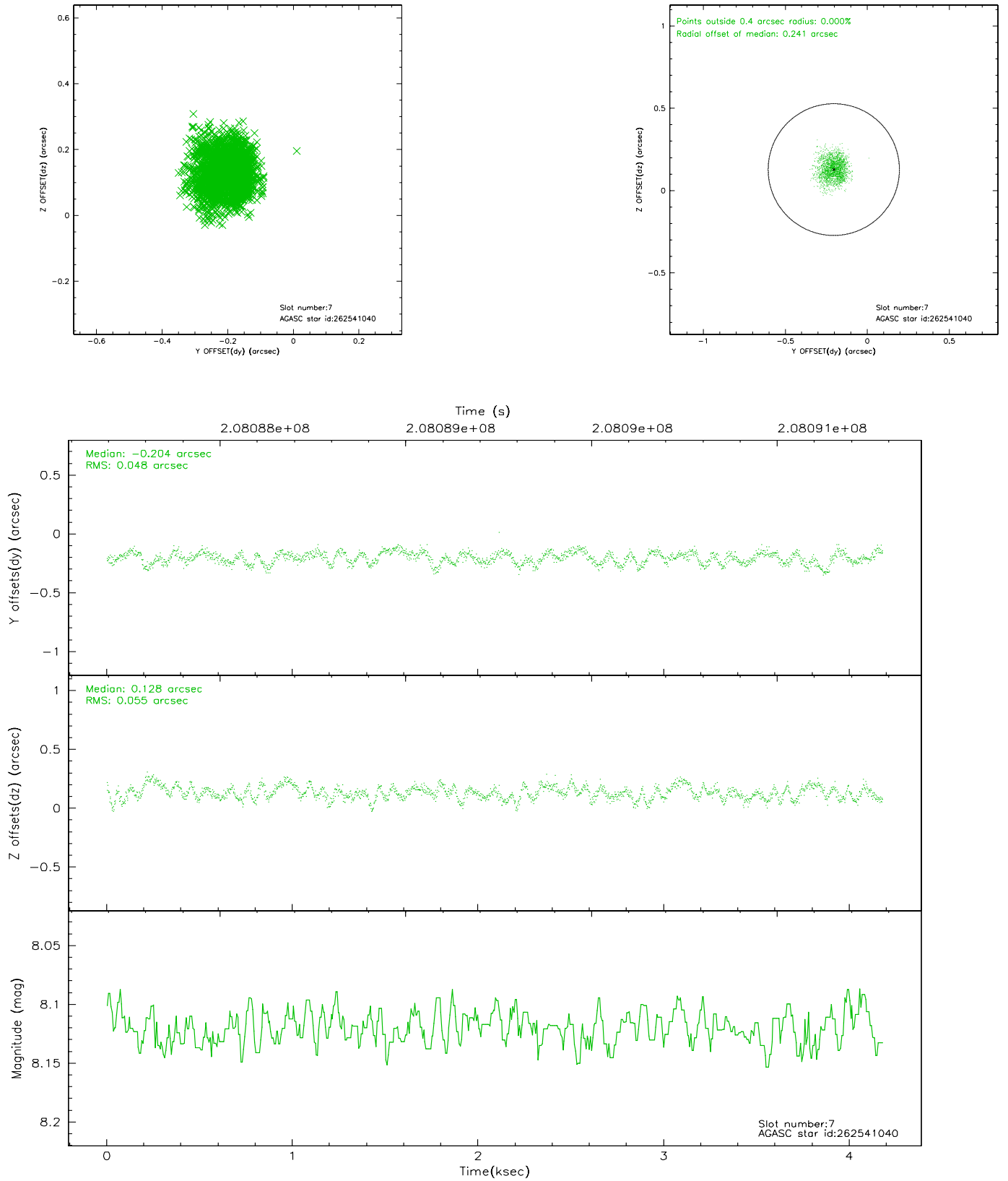
### 2.4.3 Slot 5



## 2.4.4 Slot 6

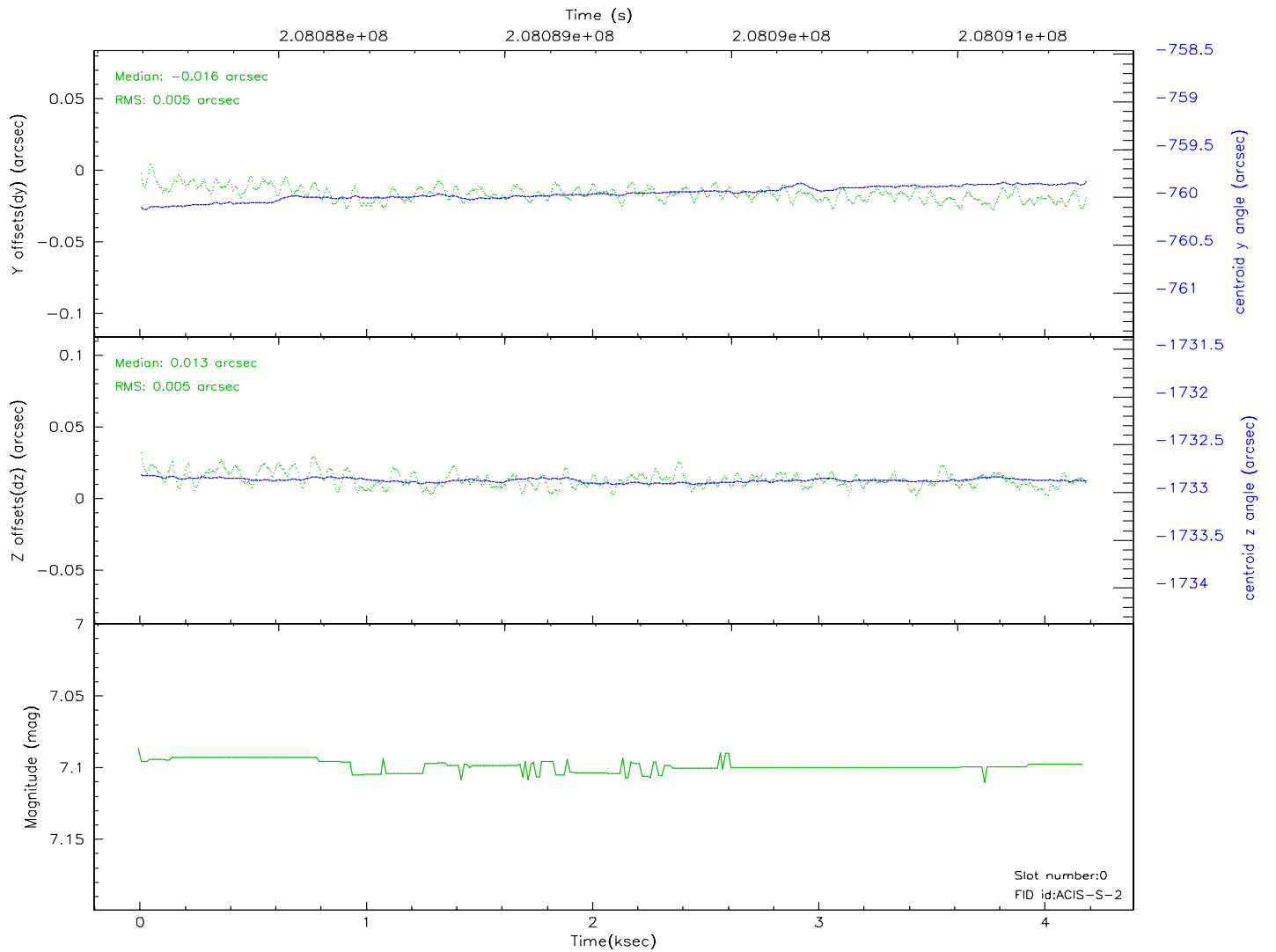
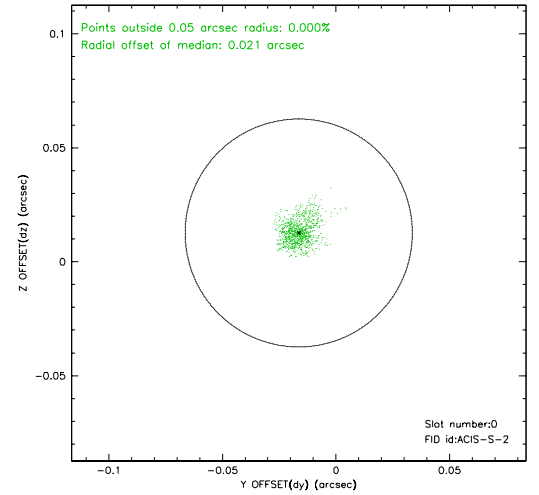
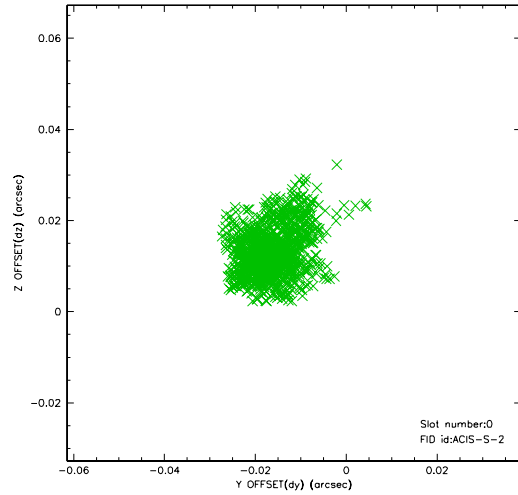


## 2.4.5 Slot 7

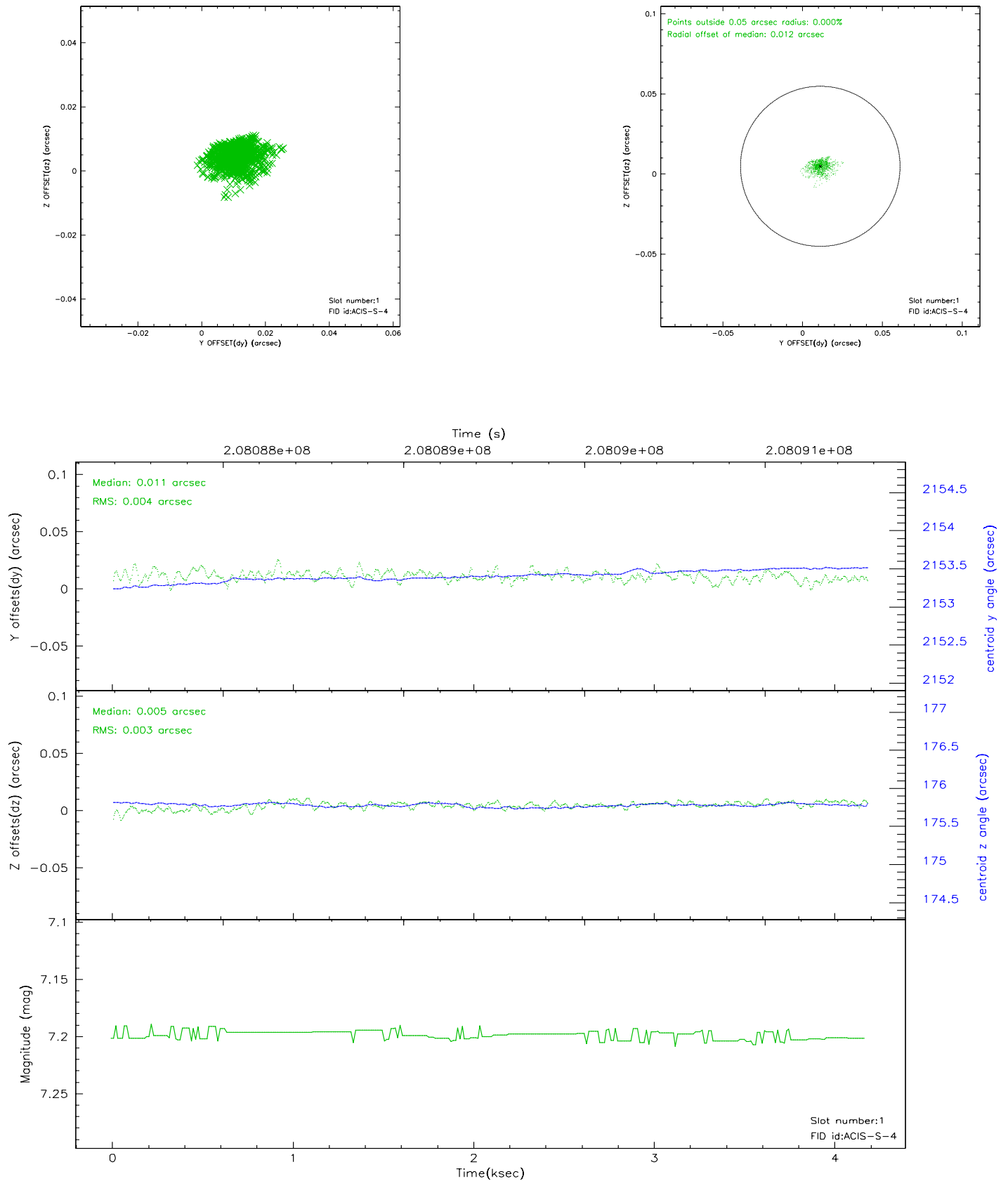


## 2.5 FID Slots

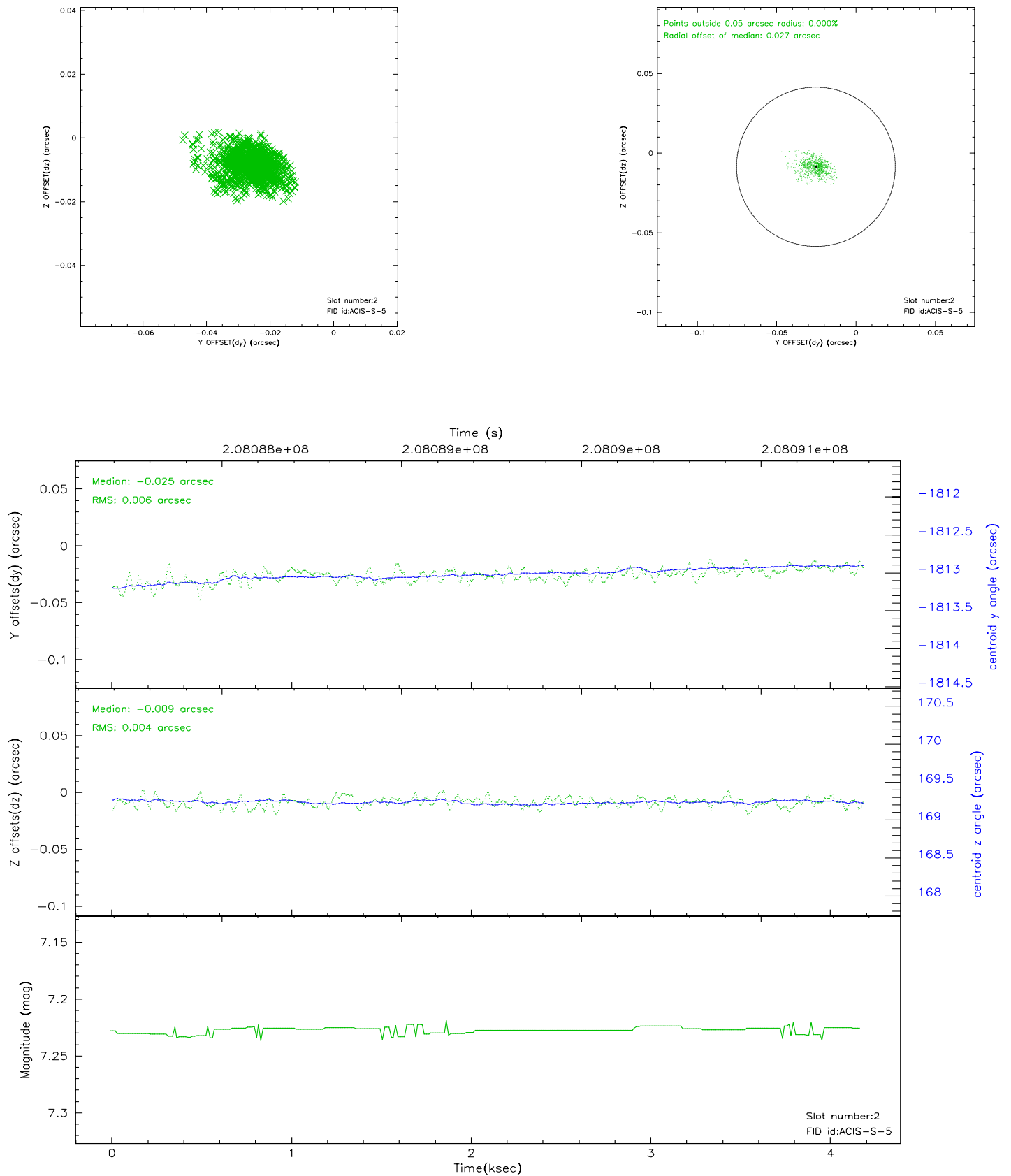
### 2.5.1 Slot 0



## 2.5.2 Slot 1

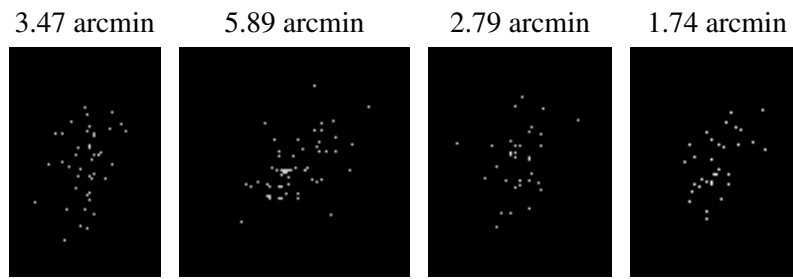


### 2.5.3 Slot 2





### 3 Point Sources



## A Summary

### A.1 Status

V&V Scientist	Beth Sundheim
V&V Date (YYYY-MM-DD)	2006.04.26
V&V Edition	1
V&V Disposition and Status	OK
V&V Charge Time	4.146

### A.2 Comments