

# V&V Reference Report

## L2 ASCDS Version : 7.6.7

Observation 6184 - L2 Version 002  
Chandra X-Ray Center

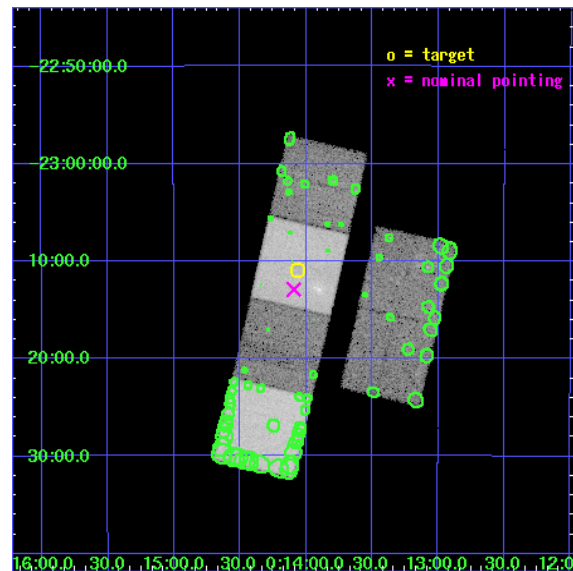
L2 Processing Date: Feb 17 2006

## Contents

<b>1</b>	<b>Front</b>	<b>2</b>
<b>2</b>	<b>OBI</b>	<b>3</b>
2.1	OBI . . . . .	3
2.1.1	Images . . . . .	3
2.1.2	Bias . . . . .	3
2.1.3	Parameters . . . . .	4
2.1.4	Events . . . . .	4
2.2	Compared Parameters . . . . .	5
2.3	Aspect . . . . .	6
2.4	Star Slots . . . . .	9
2.4.1	Slot 3 . . . . .	9
2.4.2	Slot 4 . . . . .	10
2.4.3	Slot 5 . . . . .	11
2.4.4	Slot 6 . . . . .	12
2.4.5	Slot 7 . . . . .	13
2.5	FID Slots . . . . .	14
2.5.1	Slot 0 . . . . .	14
2.5.2	Slot 1 . . . . .	15
2.5.3	Slot 2 . . . . .	16
<b>3</b>	<b>Point Sources</b>	<b>17</b>
<b>A</b>	<b>Summary</b>	<b>18</b>
A.1	Status . . . . .	18
A.2	Comments . . . . .	18

# 1 Front

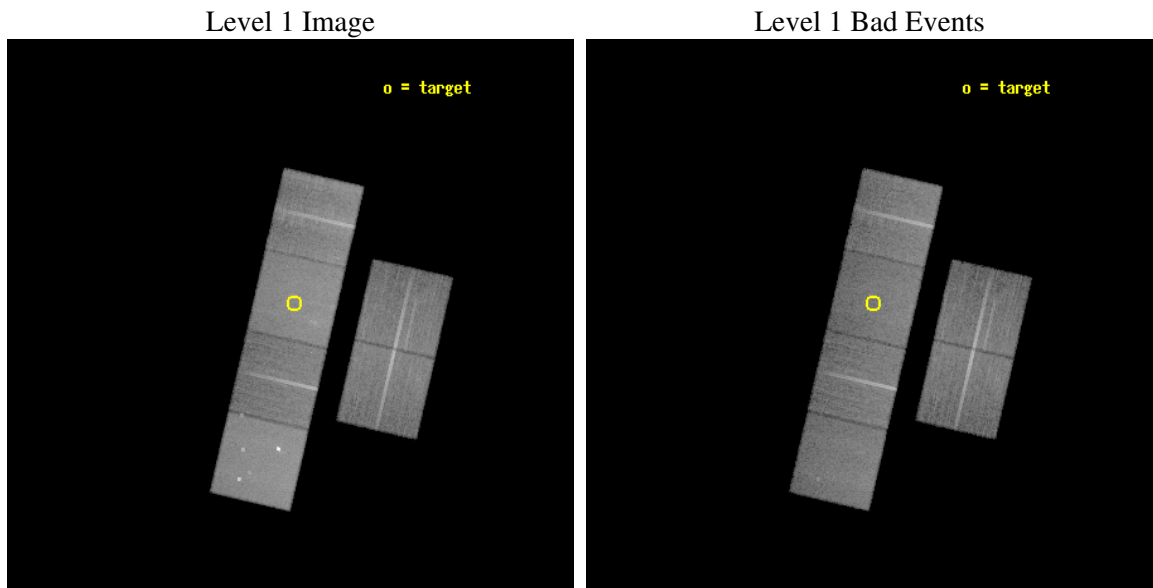
seq_num	600345
obs_id	6184
title	An X-ray Search for Extragalactic Supernova Remnants in Three Nearby Galaxies: NGC 45, NGC 247 and NGC 300
observer	Dr. Thomas Pannuti
object	NGC 45
dtcycle	0
cycle	P
ra_targ	3.516667
dec_targ	-23.181667
ra_nom	3.5231181312571
dec_nom	-23.21518377482
roll_nom	283.00917001281
revision	2
ontime	24956.799907029
livetime	24640.781879425
ontime2	24956.799907029
ontime3	24956.799907029
ontime5	24956.799907029
ontime6	24956.799907029
ontime7	24956.799907029
ontime8	24956.799907029
l2events	296008



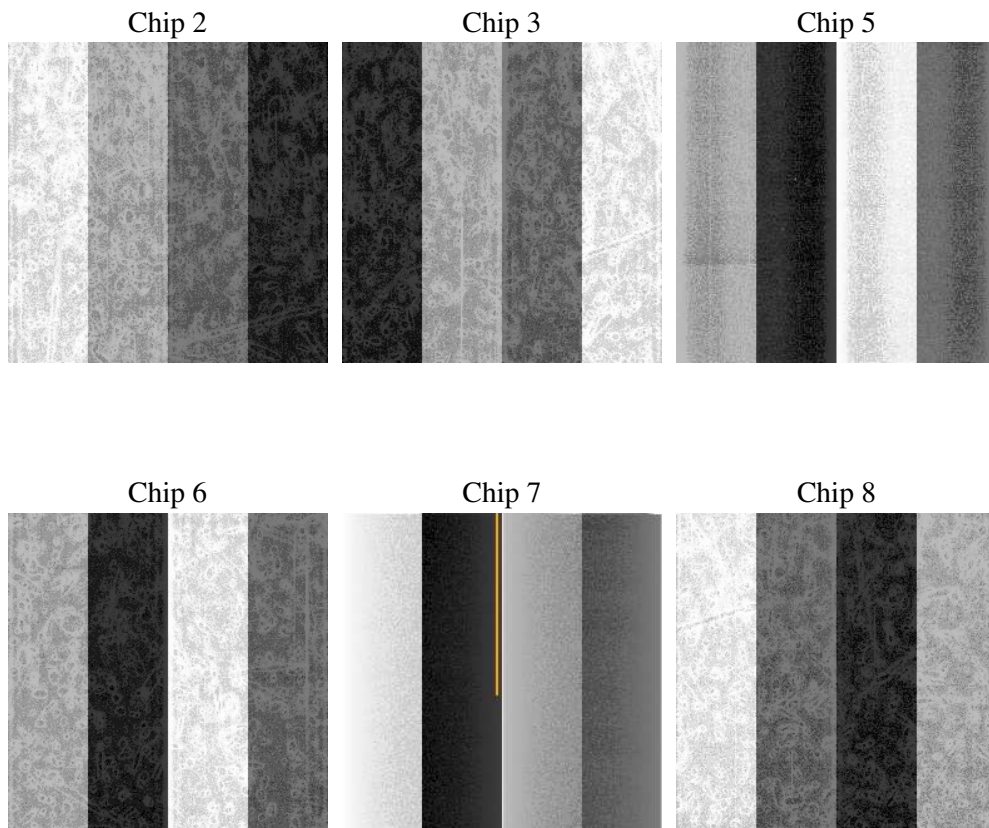
## 2 OBI

### 2.1 OBI

#### 2.1.1 Images



#### 2.1.2 Bias



### 2.1.3 Parameters

obi_num	0
ascdsver	7.6.7
caldsver	3.2.1
date	2006-02-17T04:18:36
revision	2

sched_exp_time	25000.000000
ontime	24962.188015848
ontime2	24962.188015848
ontime3	24962.188015848
ontime5	24962.188035756
ontime6	24962.188015848
ontime7	24962.188015848
ontime8	24962.188015848
l1events	1308498

### 2.1.4 Events

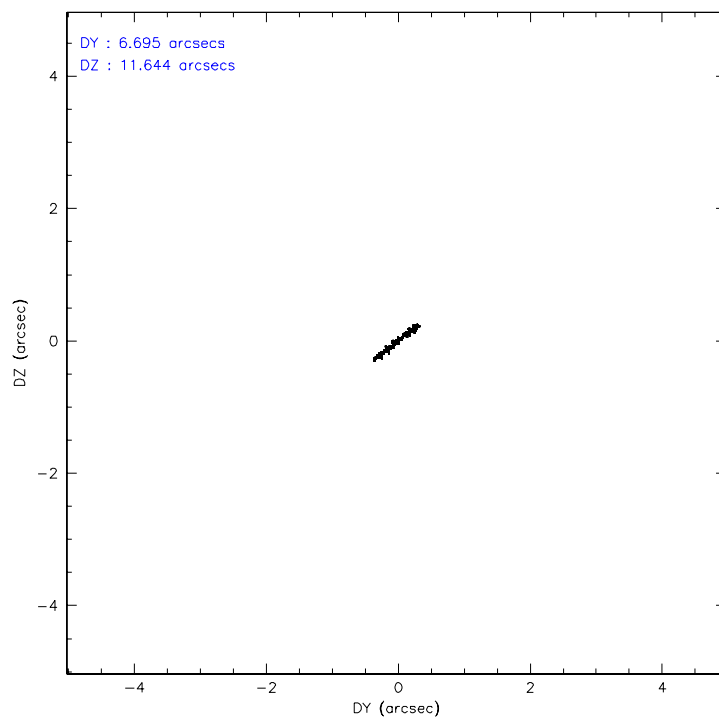
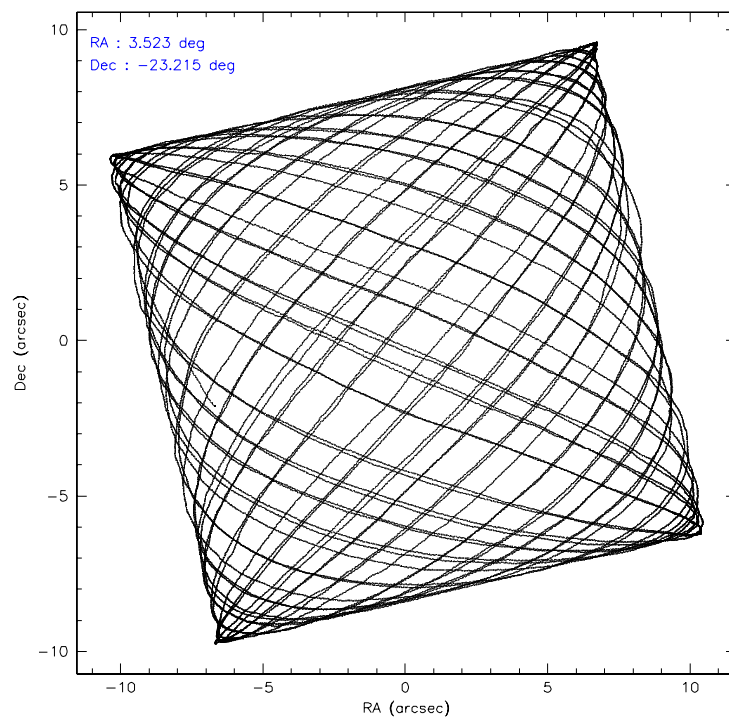
	ccd 2	ccd 3	ccd 5	ccd 6	ccd 7	ccd 8
level 1 events	182614	175092	281887	185024	252459	231422
rejected events	160167	152746	152193	162267	152802	180262
rejected %	87%	87%	53%	87%	60%	77%

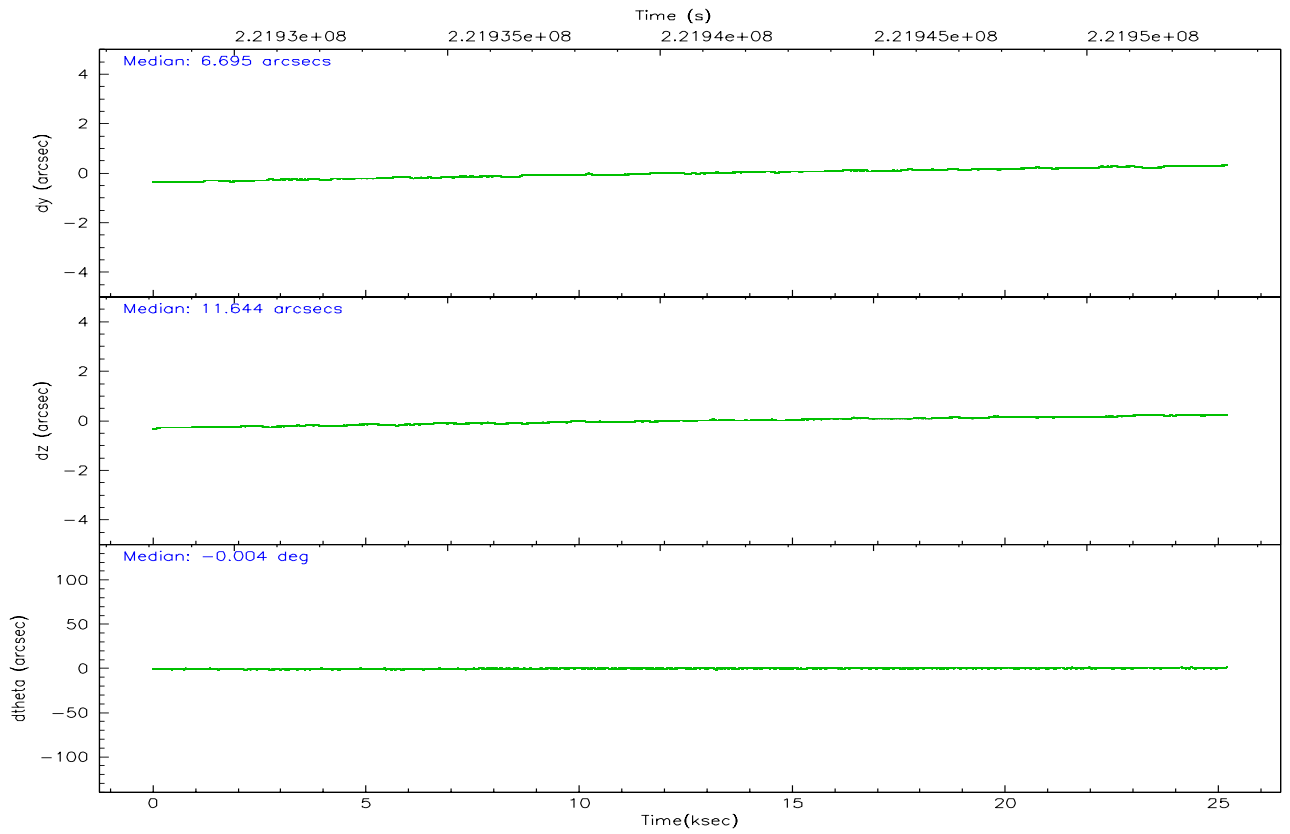
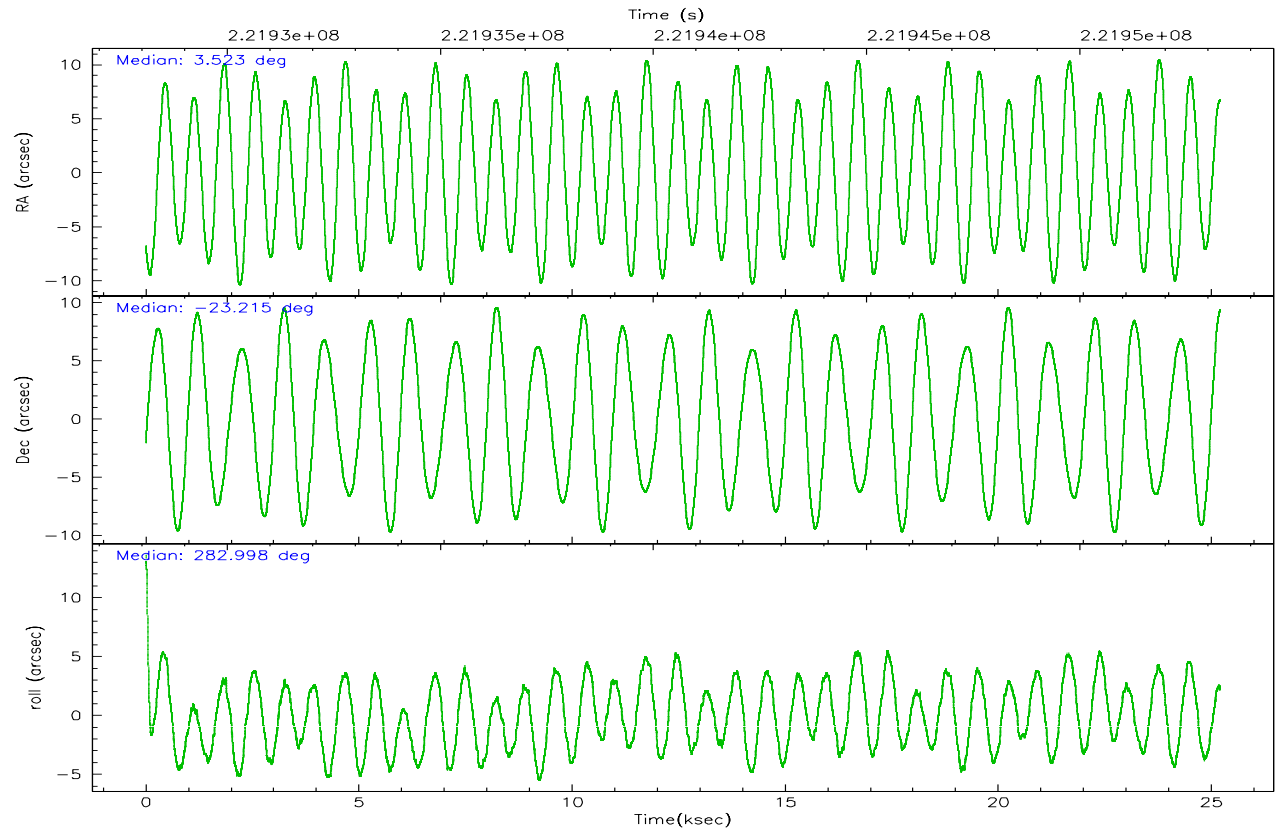
	ccd 2	ccd 3	ccd 5	ccd 6	ccd 7	ccd 8
grade 0 events	10122	10155	15620	9279	6210	16889
	5%	5%	5%	5%	2%	7%
grade 1 events	120	105	499	92	160	155
	0%	0%	0%	0%	0%	0%
grade 2 events	4523	4166	38364	4867	24857	11134
	2%	2%	13%	2%	9%	4%
grade 3 events	2091	2075	2638	2147	4970	5273
	1%	1%	0%	1%	1%	2%
grade 4 events	2081	2137	2549	2078	4908	4940
	1%	1%	0%	1%	1%	2%
grade 5 events	7150	8120	13002	8500	16287	10841
	3%	4%	4%	4%	6%	4%
grade 6 events	3634	3820	70549	4389	58737	12934
	1%	2%	25%	2%	23%	5%
grade 7 events	152893	144514	138666	153672	136330	169256
	83%	82%	49%	83%	54%	73%

## 2.2 Compared Parameters

Parameter	Planned	Actual	Parameter	Planned	Actual
Instrument	ACIS	ACIS	Obspar format version number	6	6
Detector	ACIS-235678	ACIS-235678	Obspar file type	PREDICTED	ACTUAL
Grating	NONE	NONE	Obspar update status	NONE	UPDATED
Data mode	VFAINT	VFAINT	On-chip summing requested	N	N
Observation mode	POINTING	POINTING	Subarray requested	NONE	NONE
Pointing RA	3.502628	3.523118131257137	Alternating exposures requested	N	N
Pointing Dec	-23.195544	-23.21518377482007	Primary exposure time	0.000000	3.2
Pointing Roll	282.844470	283.0091700128098			
SIM focus pos (mm)	-0.684267	-0.6828225247311905			
SIM defocus (mm)	0	0.001444936568705701			
SIM translation stage pos (mm)	-190.132523	-190.1425803651734			
SIM translation stage offset (mm)	0	0.01005778216563158			
Observation start time	221928304.184000	221927331.11969			
Observation start date	2005-01-12T14:44:00	2005-01-12T14:28:51			
Observation end time	221953304.184000	221954348.07091			
Observation end date	2005-01-12T21:40:40	2005-01-12T21:59:08			
Read mode	TIMED	TIMED			

## 2.3 Aspect



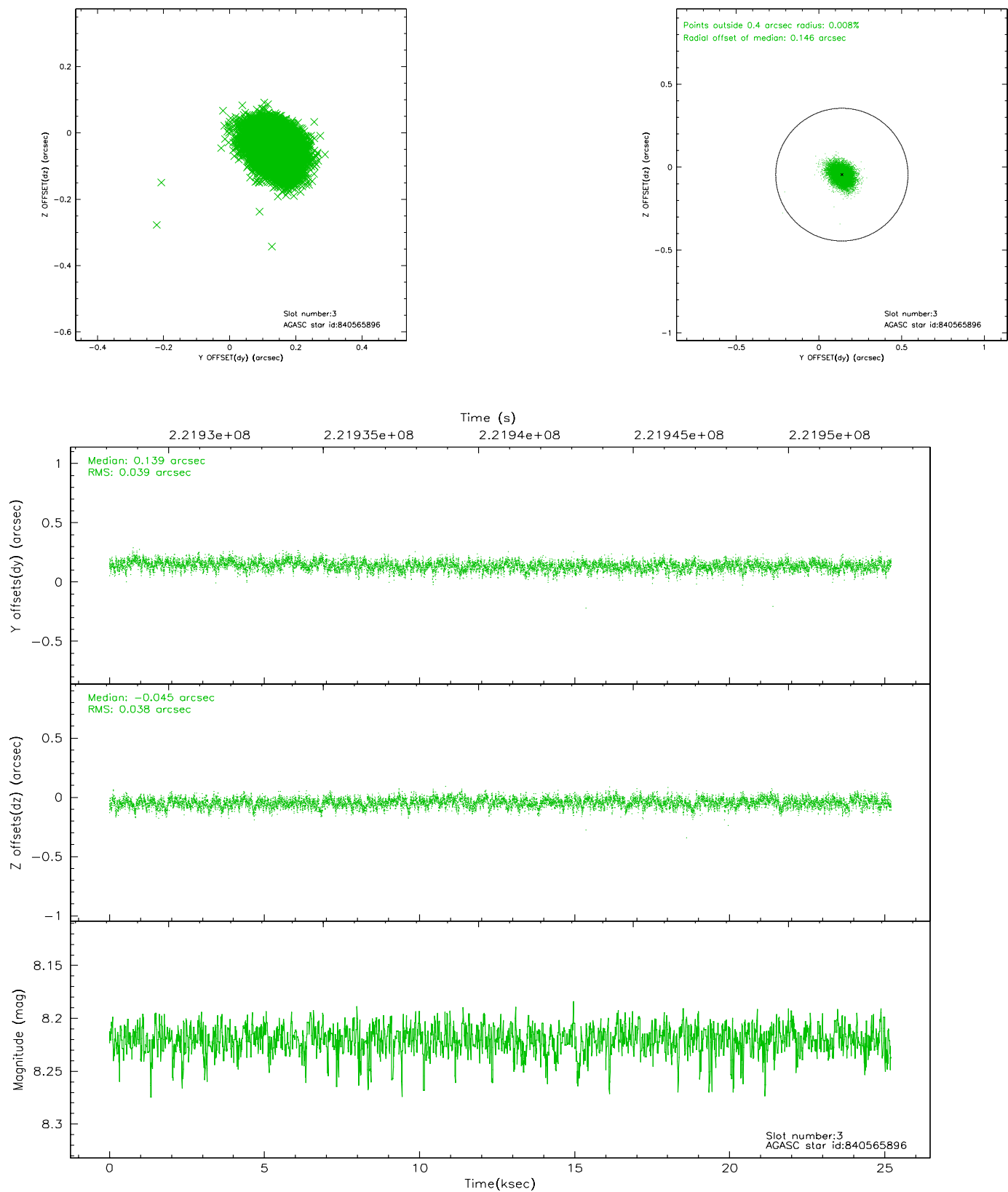


### Slot Statistics

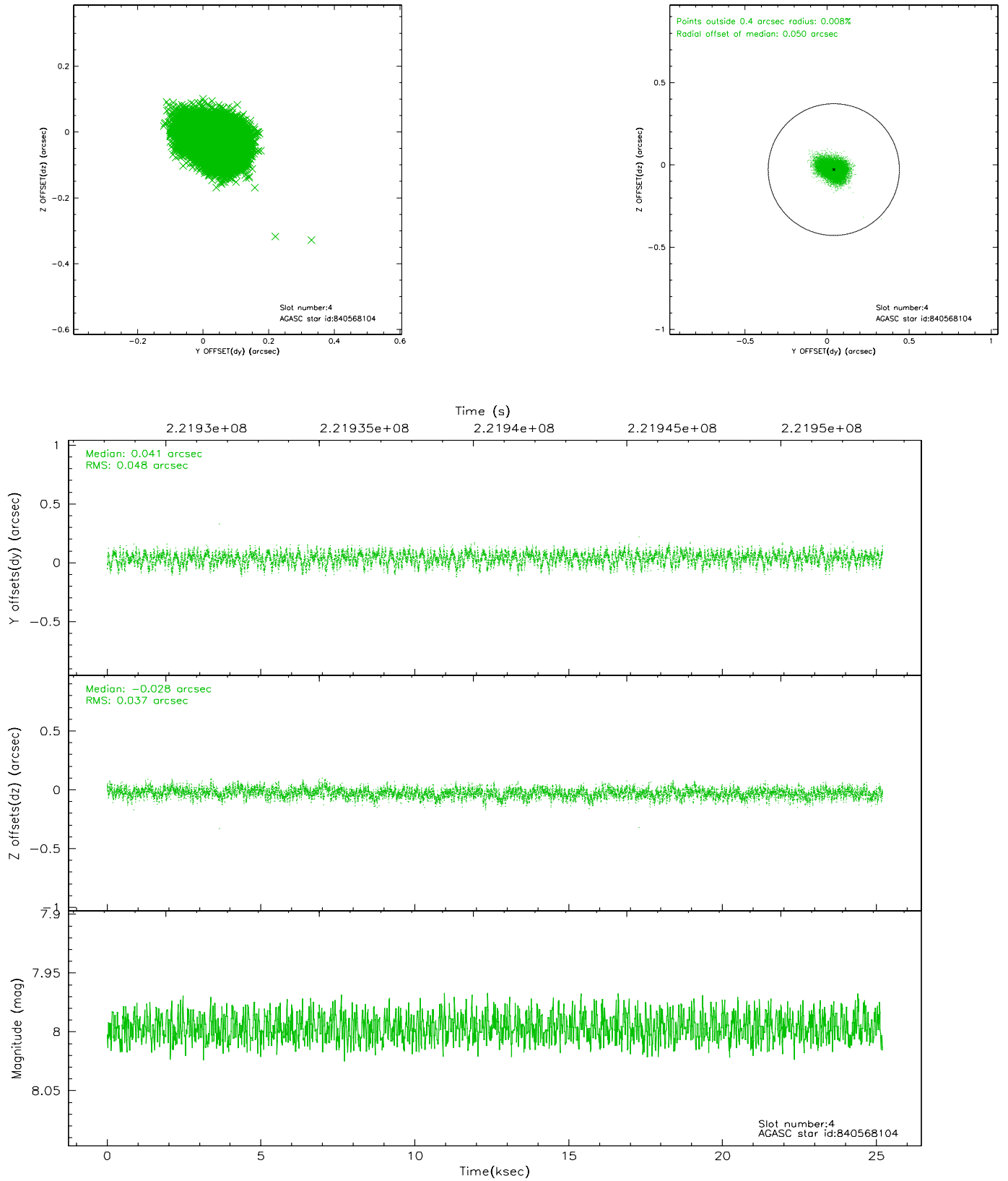
slot	status	id	mag	n_pts	med_dy	med_dz	dr1	dr2	ra	dec	mean_y	mean_z
0	FID	ACIS-S-2	7.10	6148	-0.026	0.007	0.015	0.025	0.000000	0.000000	-759.45	-1732.87
1	FID	ACIS-S-4	7.20	6147	0.014	0.010	0.012	0.038	0.000000	0.000000	2153.82	175.51
2	FID	ACIS-S-5	7.23	6149	-0.023	-0.010	0.010	0.015	0.000000	0.000000	-1812.14	169.27
3	GUIDE	840565896	8.22	12290	0.139	-0.045	0.058	0.095	3.323646	-23.732514	1754.61	-1004.24
4	GUIDE	840568104	8.00	12295	0.041	-0.028	0.065	0.104	3.814856	-22.890920	-837.71	1253.26
5	GUIDE	840569088	8.00	12294	-0.047	0.064	0.054	0.088	2.901742	-23.632364	1097.35	-2281.94
6	GUIDE	840570320	8.75	12292	-0.099	-0.005	0.074	0.118	3.286958	-22.935511	-1070.63	-489.13
7	GUIDE	840565040	9.56	12292	-0.033	0.015	0.111	0.181	4.068979	-22.578007	-1745.65	2329.06

## 2.4 Star Slots

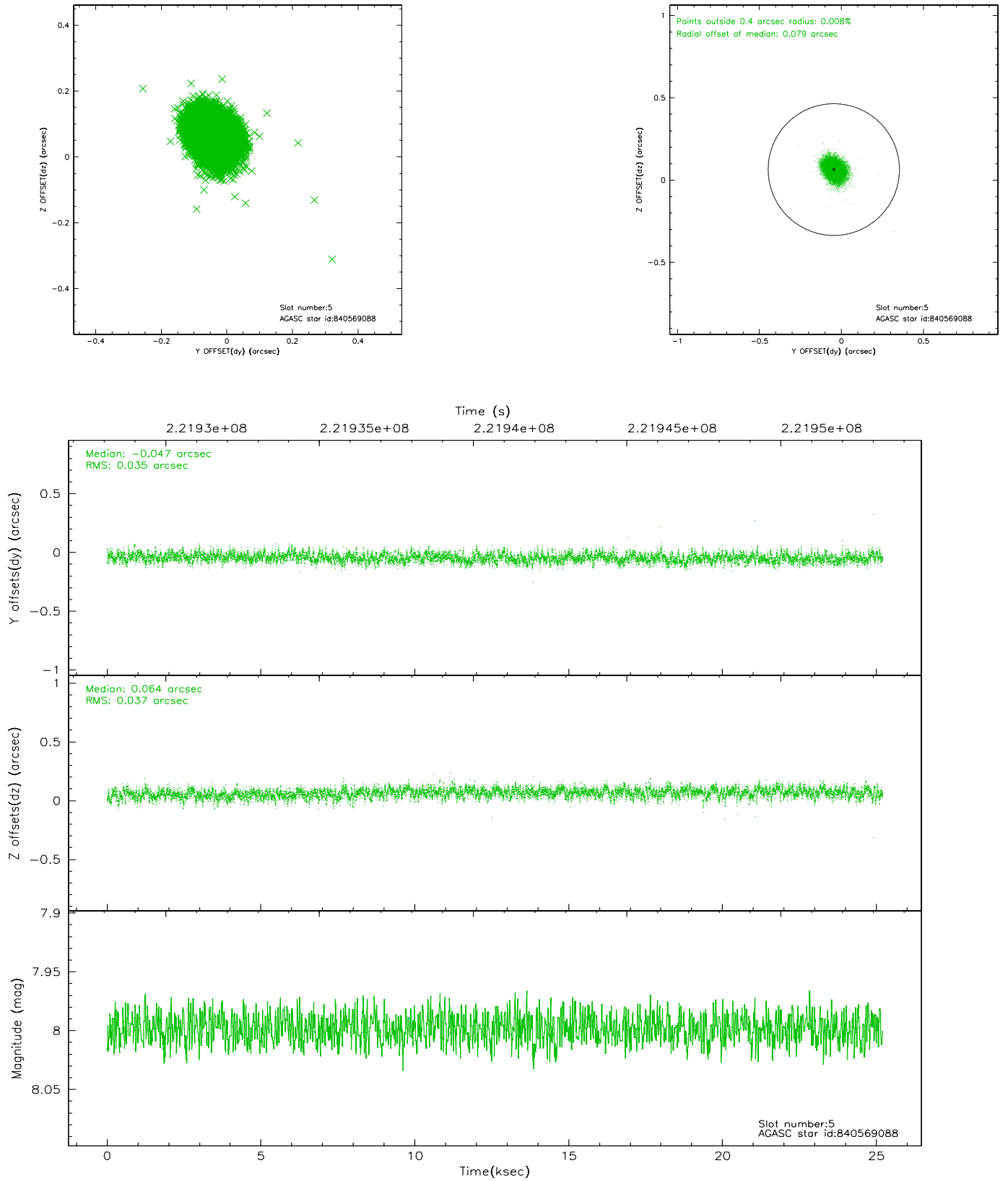
### 2.4.1 Slot 3



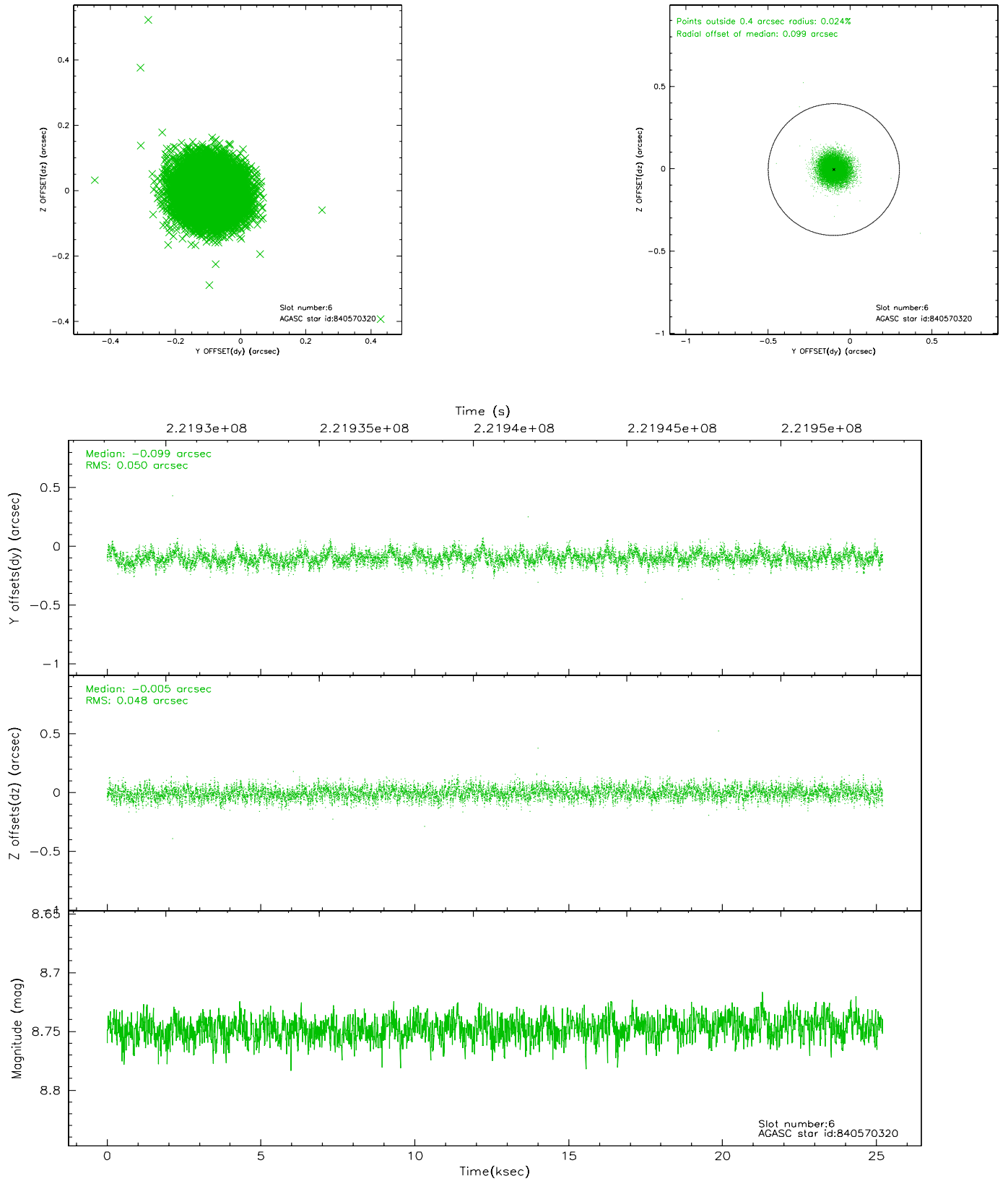
## 2.4.2 Slot 4



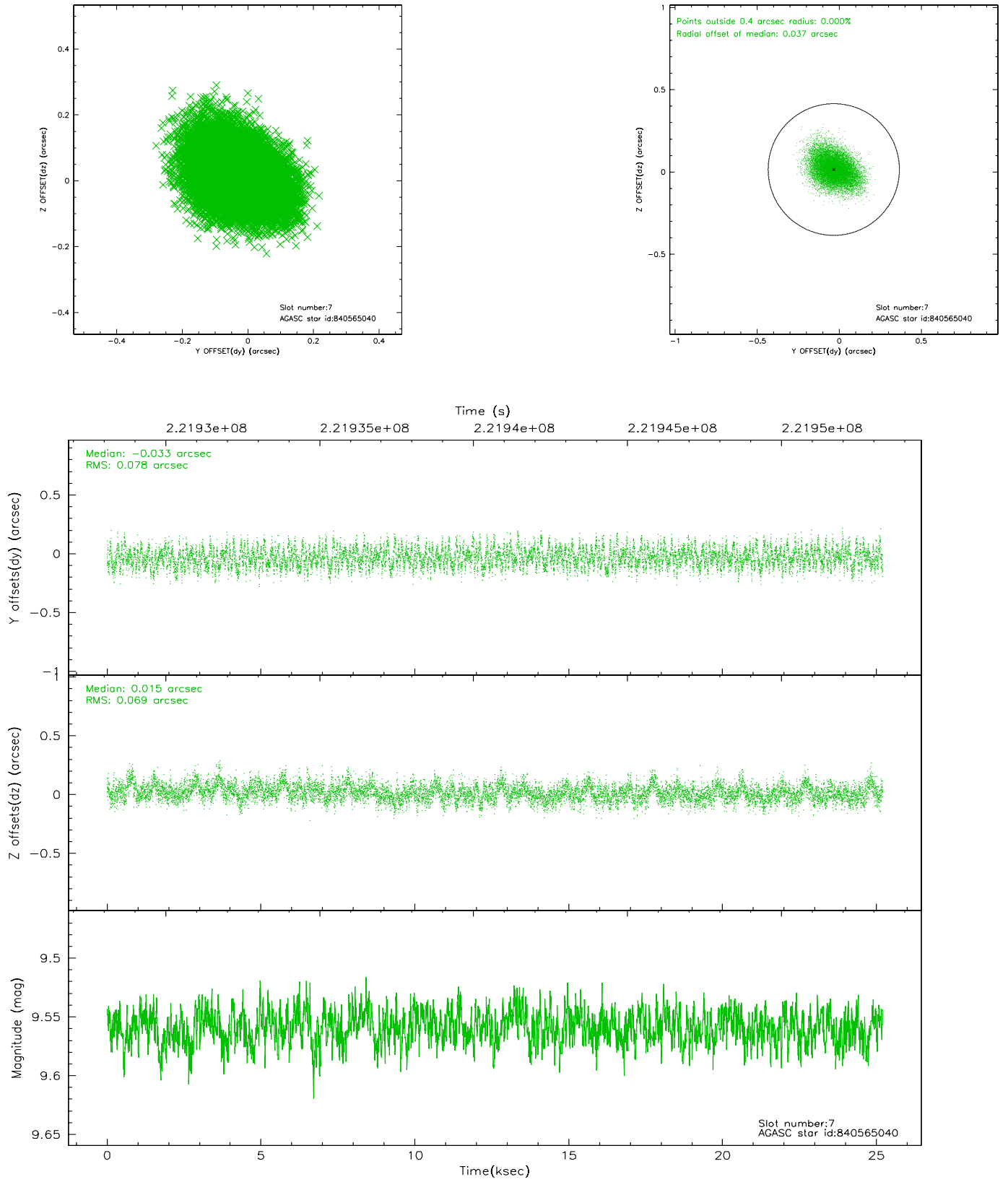
### 2.4.3 Slot 5



## 2.4.4 Slot 6

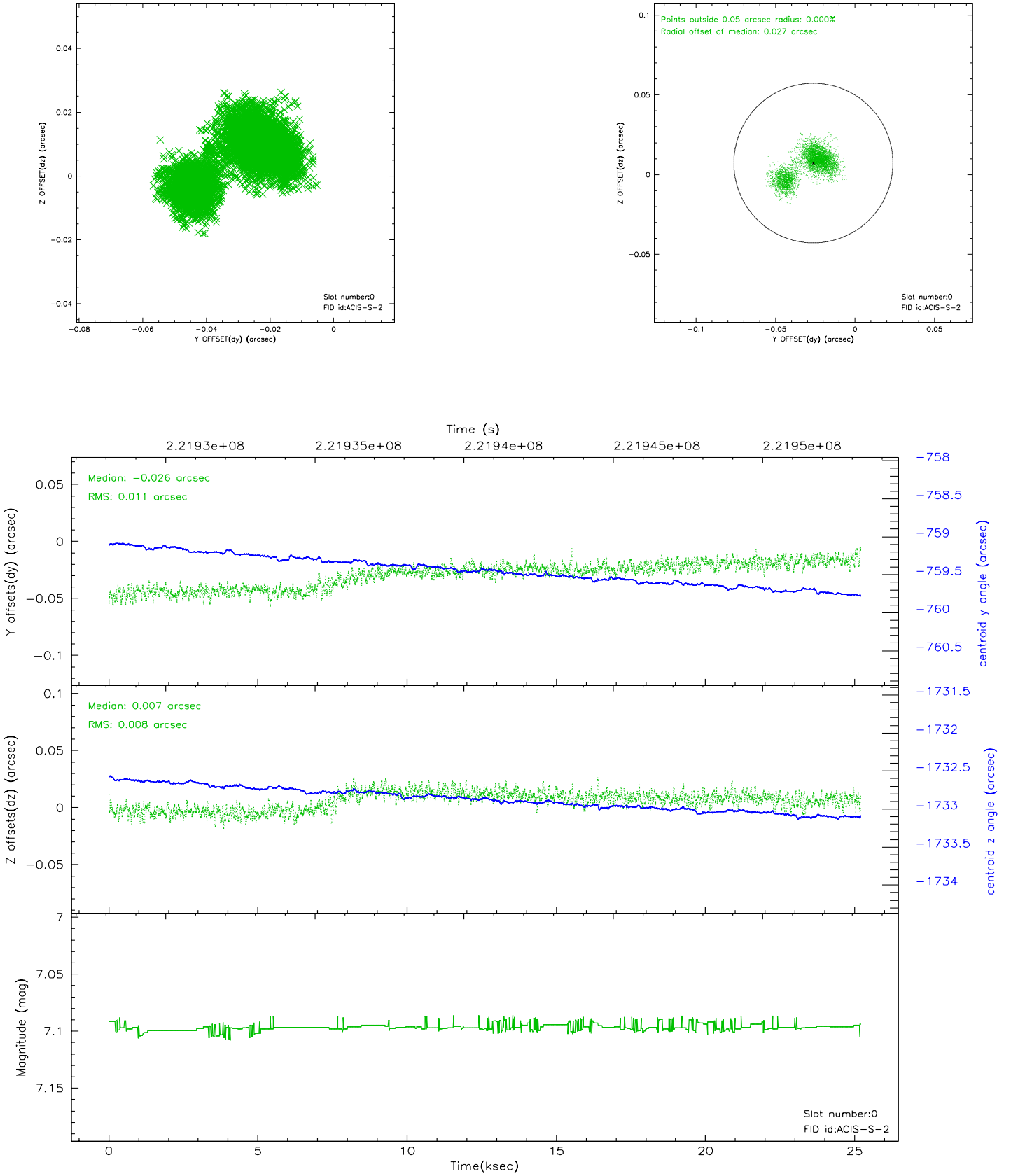


## 2.4.5 Slot 7

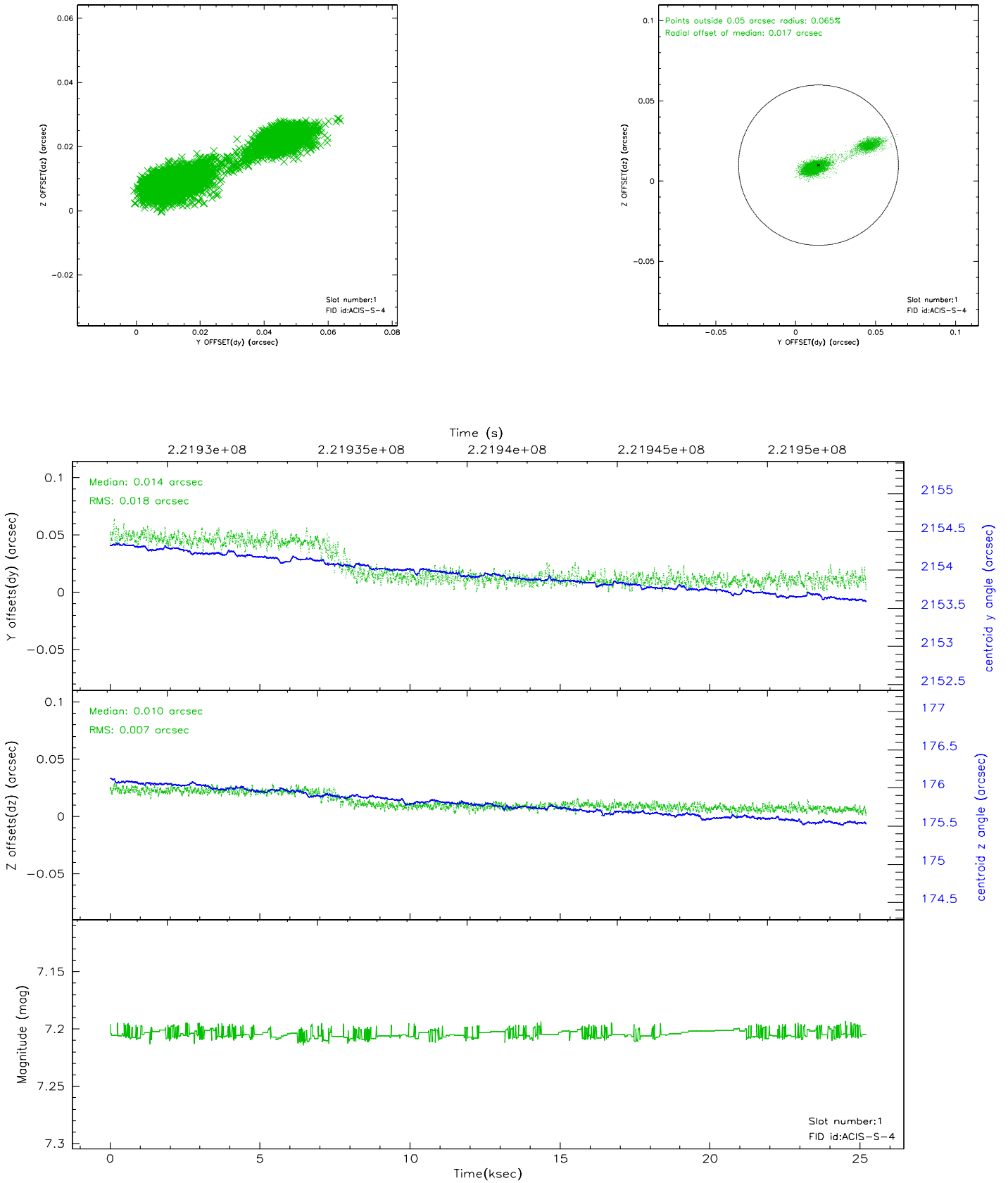


## 2.5 FID Slots

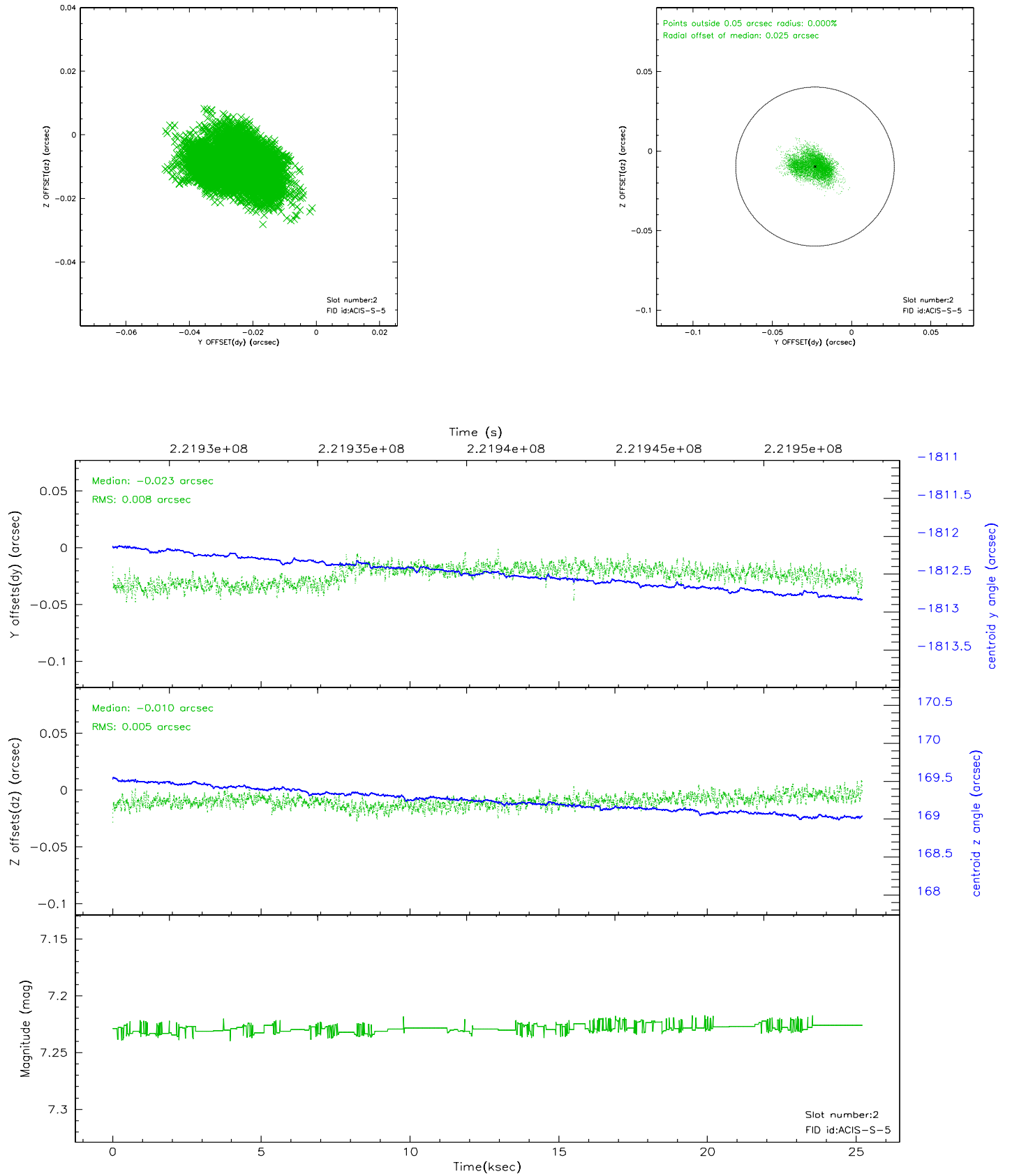
### 2.5.1 Slot 0



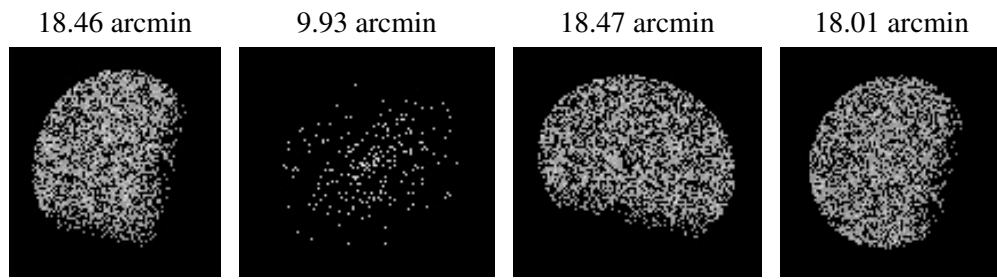
## 2.5.2 Slot 1



### 2.5.3 Slot 2



### 3 Point Sources



## A Summary

### A.1 Status

V&V Scientist	Jen Lauer
V&V Date (YYYY-MM-DD)	2006.02.17
V&V Edition	1
V&V Disposition and Status	OK
V&V Charge Time	24.95679

### A.2 Comments

Charge time:

Using existing charge time of 24.95679.