

V&V Reference Report

L2 ASCDS Version : 7.6.7.1

Observation 6118 - L2 Version 001
Chandra X-Ray Center

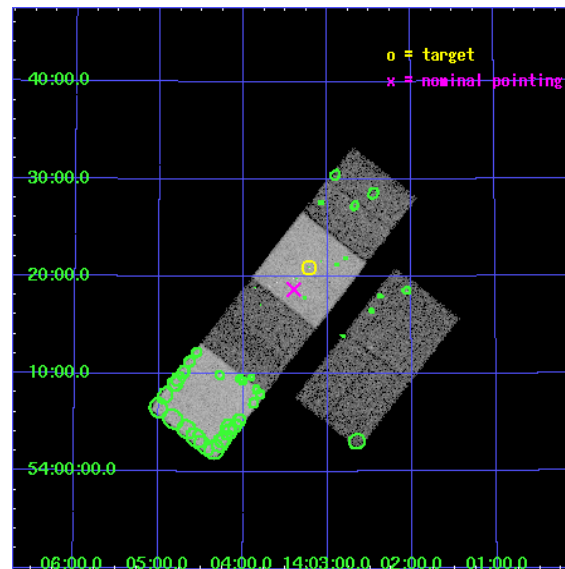
L2 Processing Date : Apr 17 2006

Contents

1	Front	2
2	OBI	3
2.1	OBI	3
2.1.1	Images	3
2.1.2	Bias	3
2.1.3	Parameters	4
2.1.4	Events	4
2.2	Compared Parameters	5
2.3	Aspect	6
2.4	Star Slots	9
2.4.1	Slot 3	9
2.4.2	Slot 4	10
2.4.3	Slot 5	11
2.4.4	Slot 6	12
2.4.5	Slot 7	13
2.5	FID Slots	14
2.5.1	Slot 0	14
2.5.2	Slot 1	15
2.5.3	Slot 2	16
3	Point Sources	17
A	Summary	18
A.1	Status	18
A.2	Comments	18

1 Front

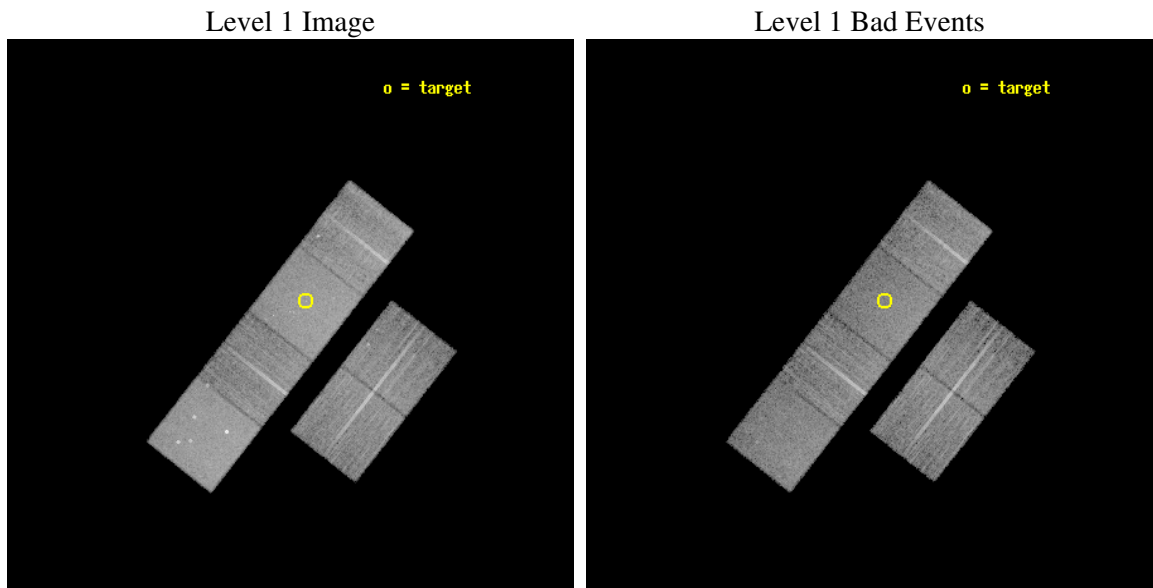
seq_num	600390
obs_id	6118
title	An Ultra-Deep Study of M101
observer	Dr. K. Kuntz
object	M101
dtcycle	0
cycle	P
ra_targ	210.80375
dec_targ	54.348778
ra_nom	210.84972011795
dec_nom	54.311803995552
roll_nom	308.11927622998
revision	2
ontime	11606.399956763
livetime	11459.432731975
ontime2	11606.399956763
ontime3	11606.399956763
ontime5	11606.399956763
ontime6	11606.399956763
ontime7	11606.399956763
ontime8	11606.399956763
l2events	148121



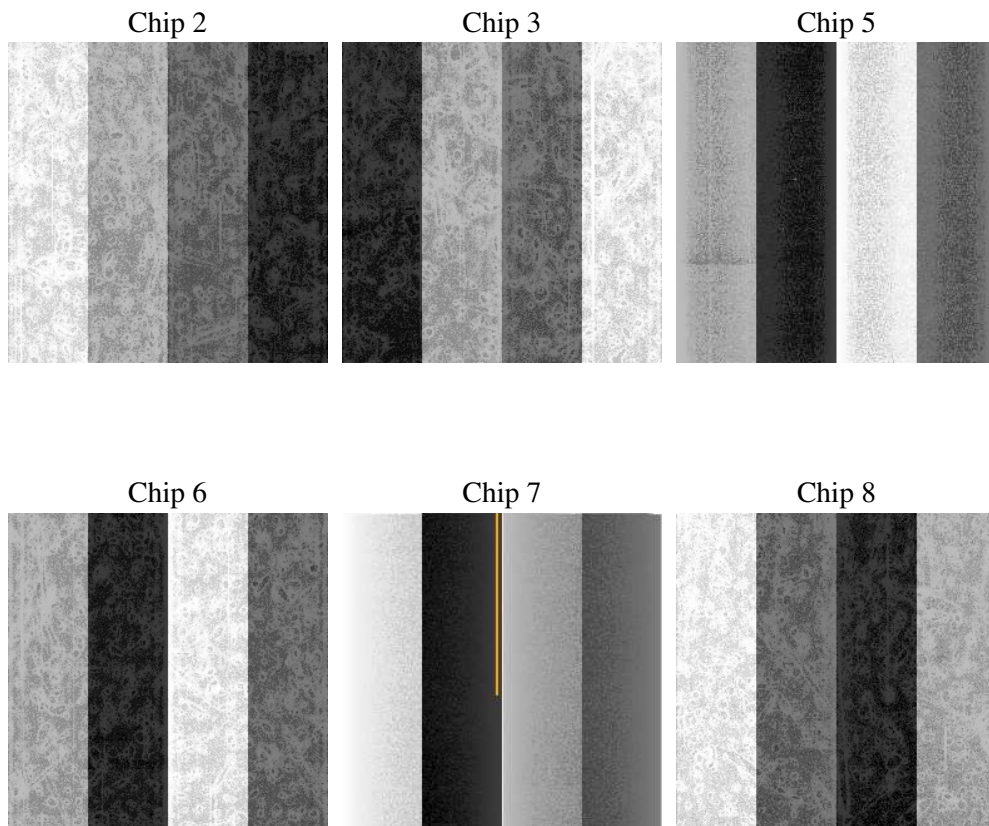
2 OBI

2.1 OBI

2.1.1 Images



2.1.2 Bias



2.1.3 Parameters

obi_num	0
ascdsver	7.6.7.1
caldbver	3.2.1
date	2006-04-17T13:44:16
revision	2

sched_exp_time	11502.748000
ontime	11612.501748502
ontime2	11612.501748502
ontime3	11612.501748502
ontime5	11612.501748502
ontime6	11612.501748502
ontime7	11612.501748502
ontime8	11612.501748502
l1events	643662

2.1.4 Events

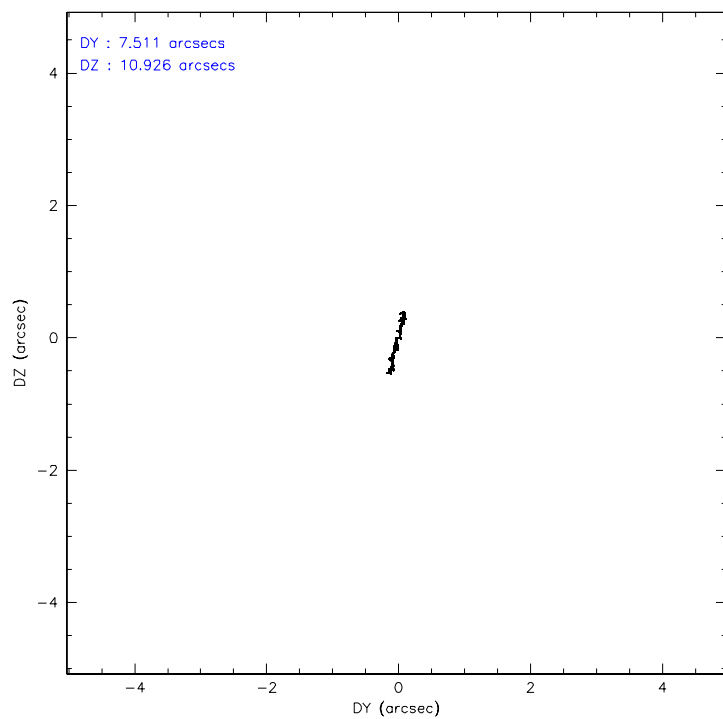
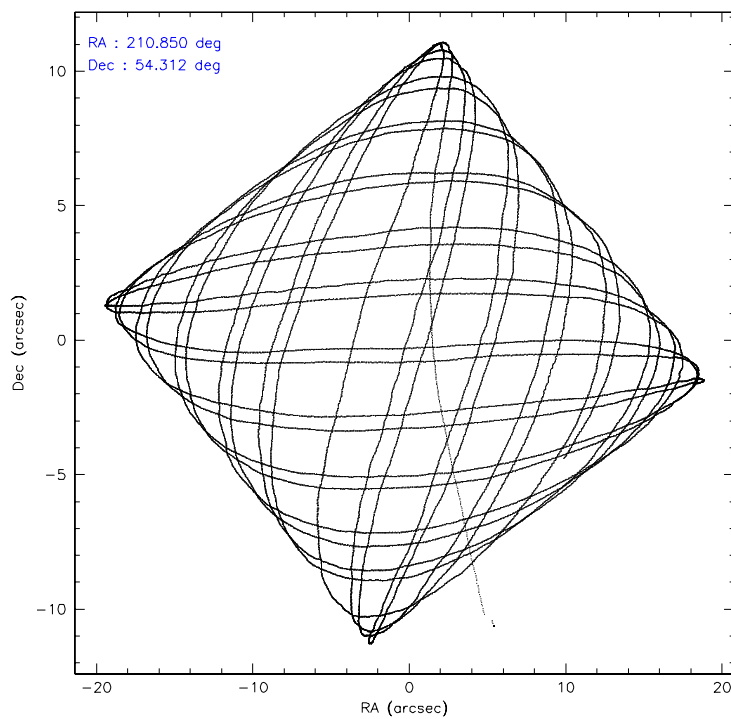
	ccd 2	ccd 3	ccd 5	ccd 6	ccd 7	ccd 8
level 1 events	93395	86110	135824	91240	124096	112997
rejected events	82105	74999	73465	79588	73735	87498
rejected %	87%	87%	54%	87%	59%	77%

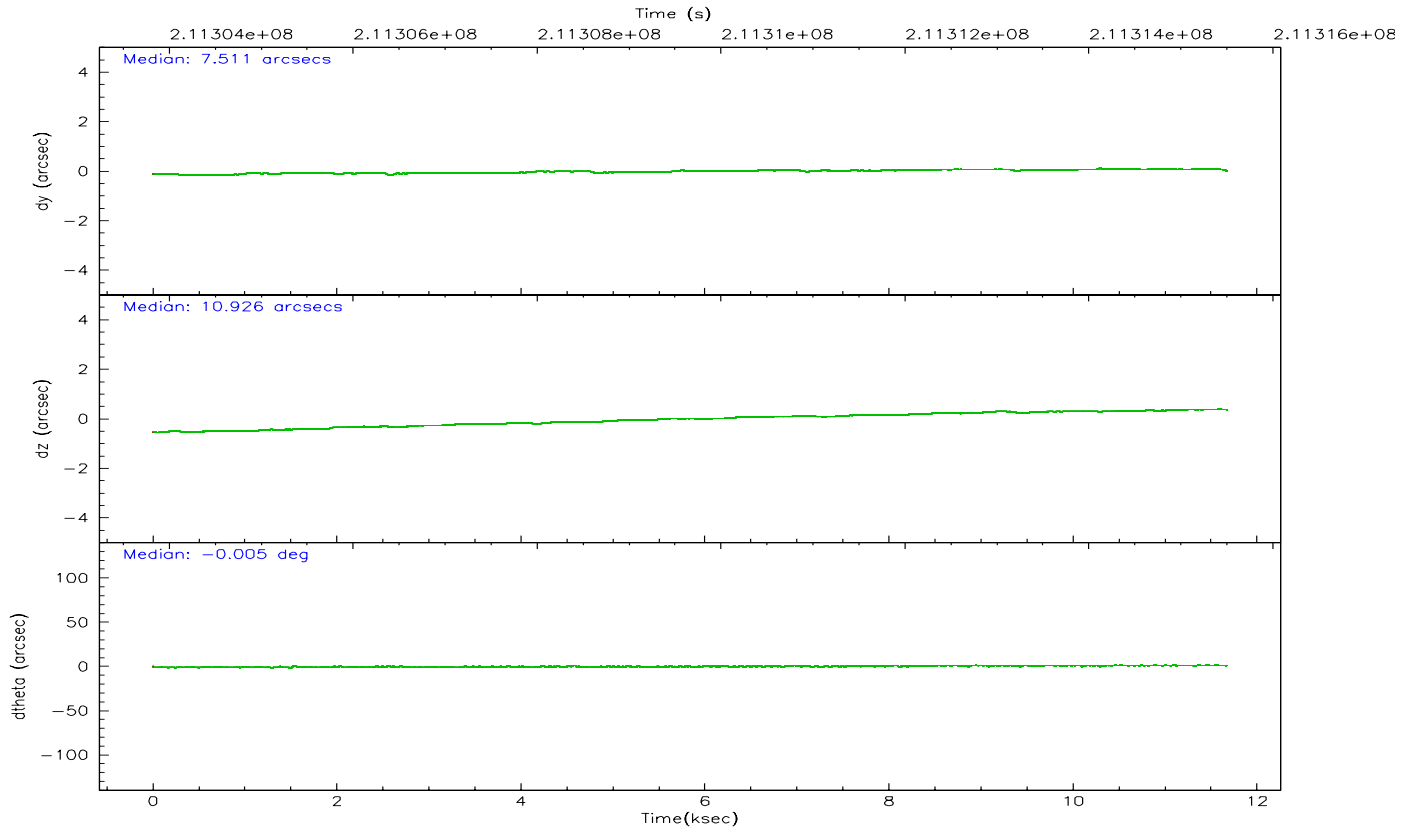
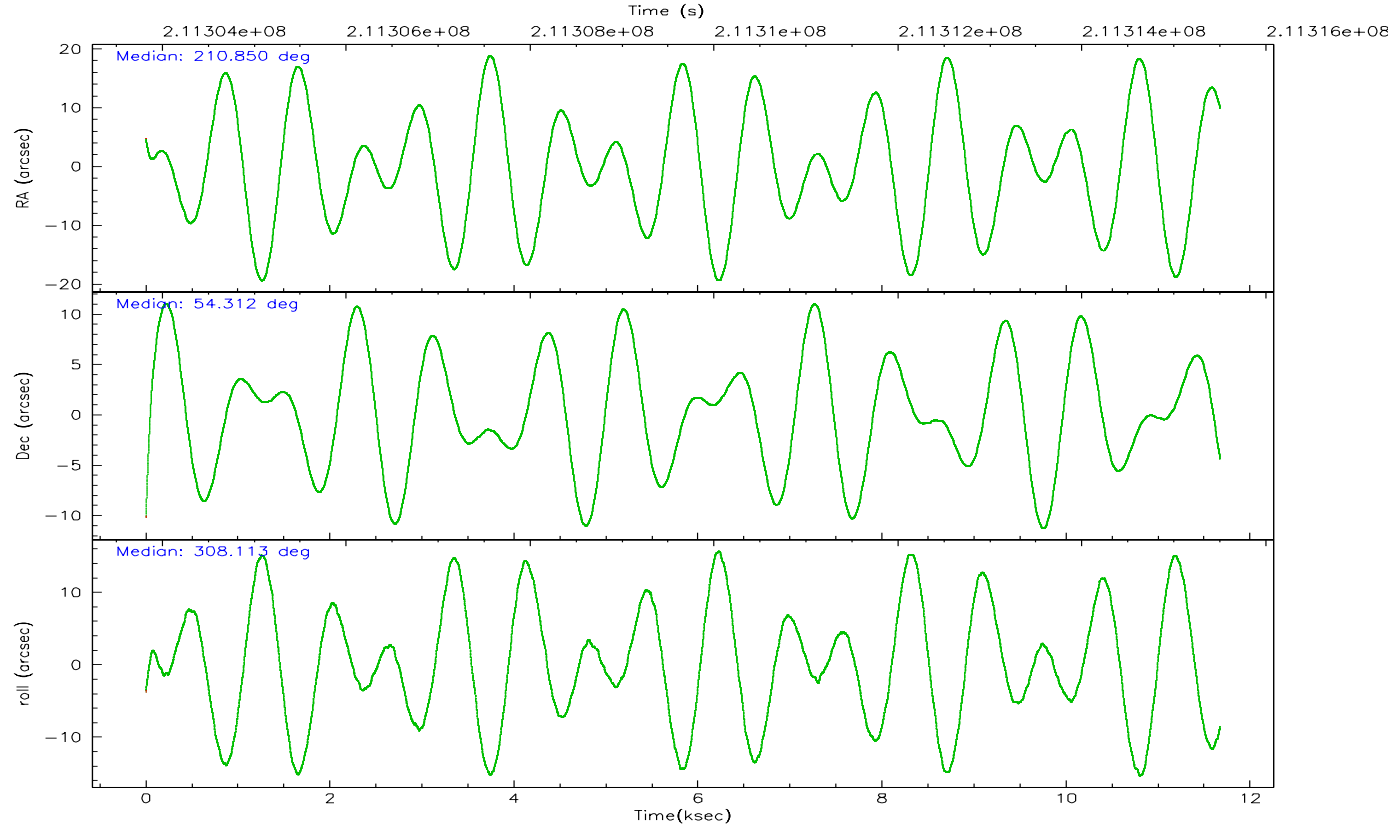
	ccd 2	ccd 3	ccd 5	ccd 6	ccd 7	ccd 8
grade 0 events	5196	5174	6196	5065	3735	8694
	5%	6%	4%	5%	3%	7%
grade 1 events	57	74	129	39	72	84
	0%	0%	0%	0%	0%	0%
grade 2 events	2334	2057	18872	2376	12207	5440
	2%	2%	13%	2%	9%	4%
grade 3 events	1003	1084	1383	1069	2675	2611
	1%	1%	1%	1%	2%	2%
grade 4 events	986	960	1330	1020	2547	2462
	1%	1%	0%	1%	2%	2%
grade 5 events	3468	3869	6196	4080	7985	5170
	3%	4%	4%	4%	6%	4%
grade 6 events	1777	1838	34615	2128	29228	6302
	1%	2%	25%	2%	23%	5%
grade 7 events	78574	71054	67103	75463	65647	82234
	84%	82%	49%	82%	52%	72%

2.2 Compared Parameters

Parameter	Planned	Actual	Parameter	Planned	Actual
Instrument	ACIS	ACIS	Obspar format version number	6	6
Detector	ACIS-235678	ACIS-235678	Obspar file type	PREDICTED	ACTUAL
Grating	NONE	NONE	Obspar update status	NONE	UPDATED
Data mode	VFAINT	VFAINT	On-chip summing requested	N	N
Observation mode	POINTING	POINTING	Subarray requested	NONE	NONE
Pointing RA	210.806153	210.8497201179519	Alternating exposures requested	N	N
Pointing Dec	54.321537	54.31180399555183	Primary exposure time	0.000000	3.2
Pointing Roll	307.998039	308.1192762299825			
SIM focus pos (mm)	-0.684267	-0.6828225247311905			
SIM defocus (mm)	0	0.001444936568705701			
SIM translation stage pos (mm)	-190.132523	-190.1400660498719			
SIM translation stage offset (mm)	0	0.00754346686406393			
Observation start time	211303998.184000	211302908.90553			
Observation start date	2004-09-11T15:32:14	2004-09-11T15:15:08			
Observation end time	211315501.184000	211315726.0186			
Observation end date	2004-09-11T18:43:57	2004-09-11T18:48:46			
Read mode	TIMED	TIMED			

2.3 Aspect



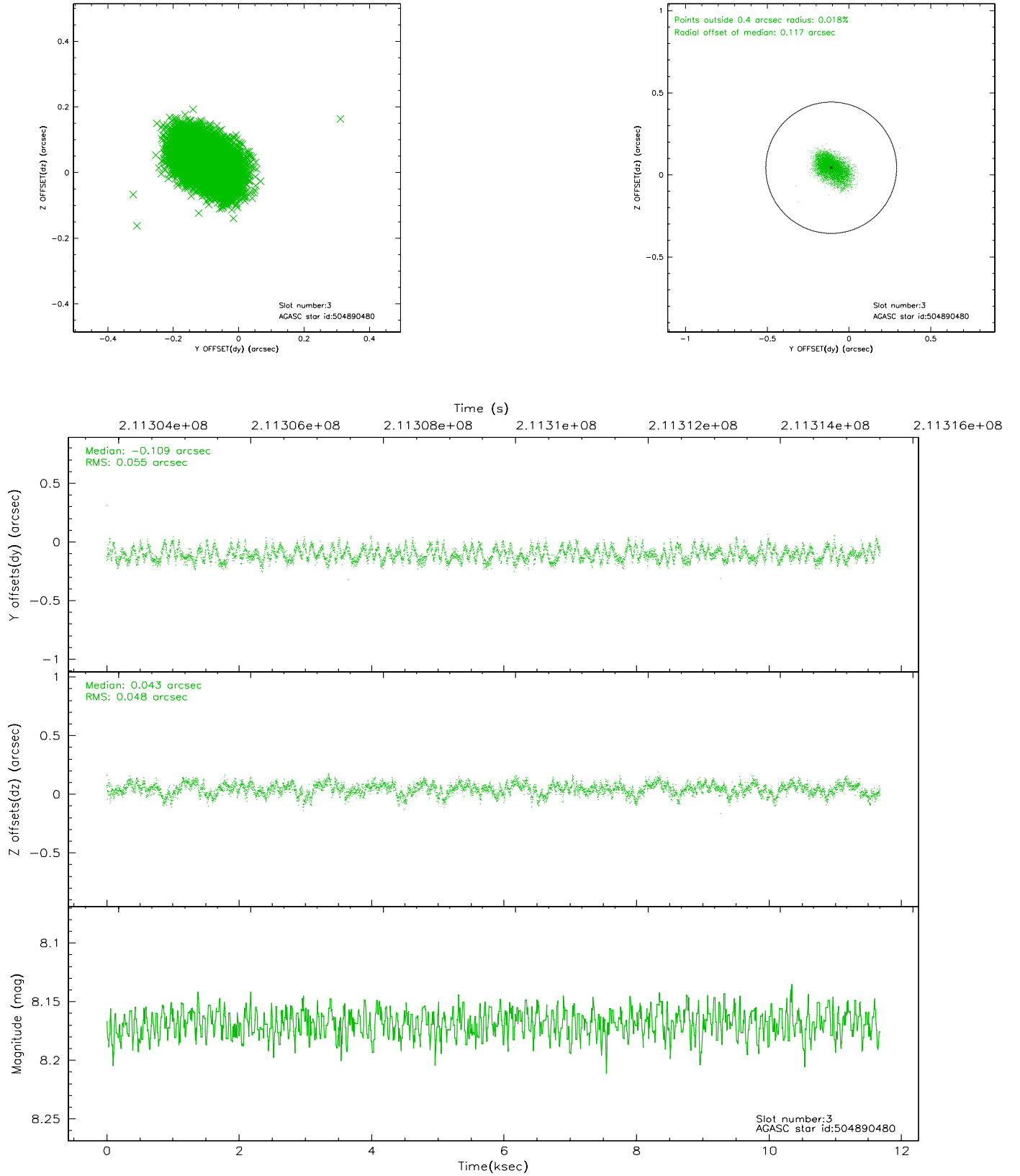


Slot Statistics

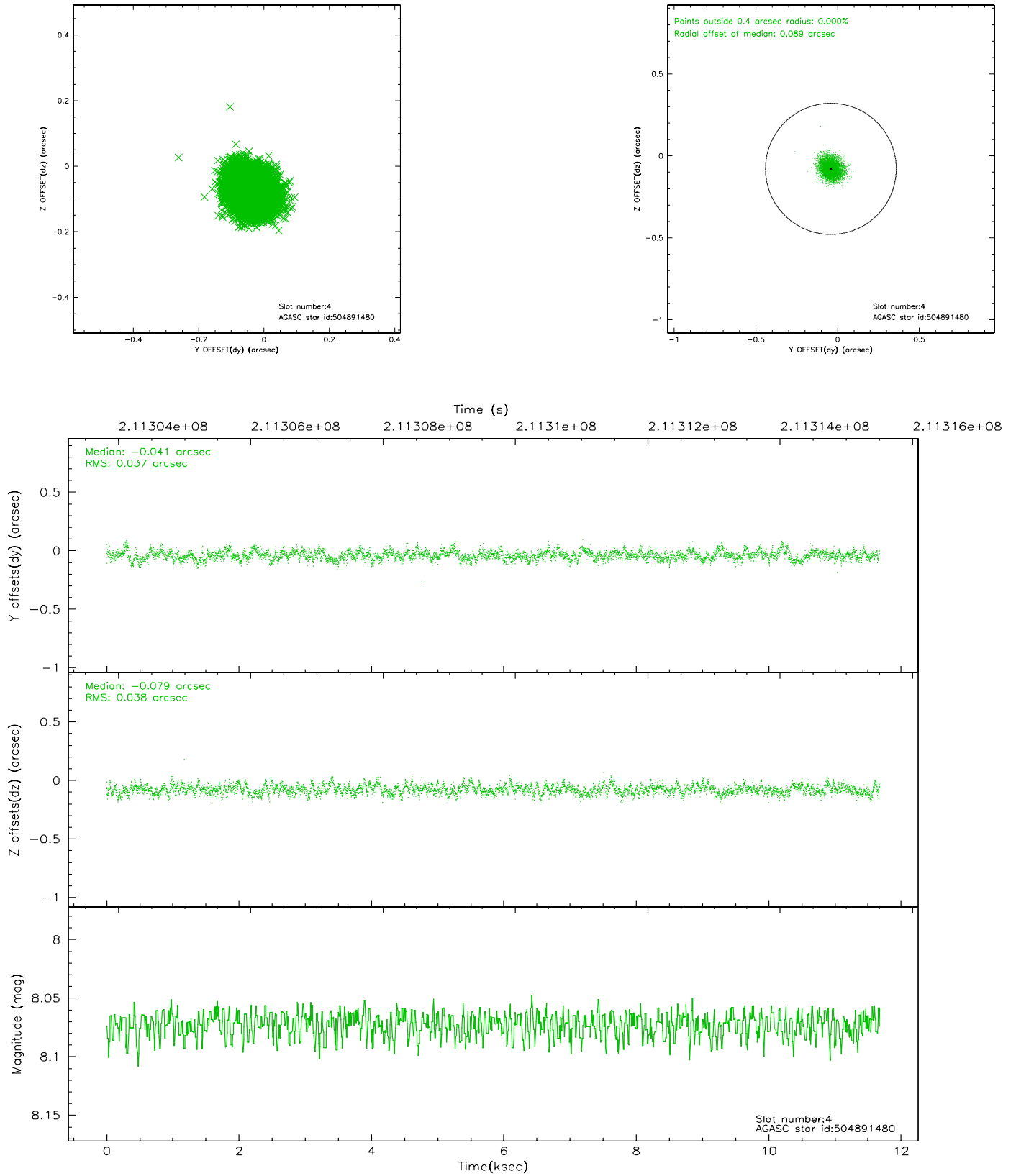
slot	status	id	mag	n_pts	med_dy	med_dz	dr1	dr2	ra	dec	mean_y	mean_z
0	FID	ACIS-S-2	7.10	2848	-0.030	0.010	0.008	0.013	0.000000	0.000000	-760.26	-1732.16
1	FID	ACIS-S-4	7.20	2848	0.042	0.012	0.006	0.010	0.000000	0.000000	2152.86	175.92
2	FID	ACIS-S-5	7.23	2848	-0.042	-0.013	0.008	0.013	0.000000	0.000000	-1812.59	169.99
3	GUIDE	504890480	8.17	5693	-0.109	0.043	0.077	0.126	210.132463	53.768436	681.90	-2351.52
4	GUIDE	504891480	8.07	5693	-0.041	-0.079	0.056	0.091	210.708012	54.666096	-1103.00	602.34
5	GUIDE	504894408	9.28	5692	0.040	0.105	0.090	0.145	211.942794	54.047749	2240.46	1298.95
6	GUIDE	504894856	8.98	5694	0.010	-0.047	0.082	0.137	209.819510	54.132689	-755.86	-2049.18
7	GUIDE	505292416	9.30	5692	0.099	-0.021	0.088	0.141	210.920759	55.040479	-1894.53	1779.44

2.4 Star Slots

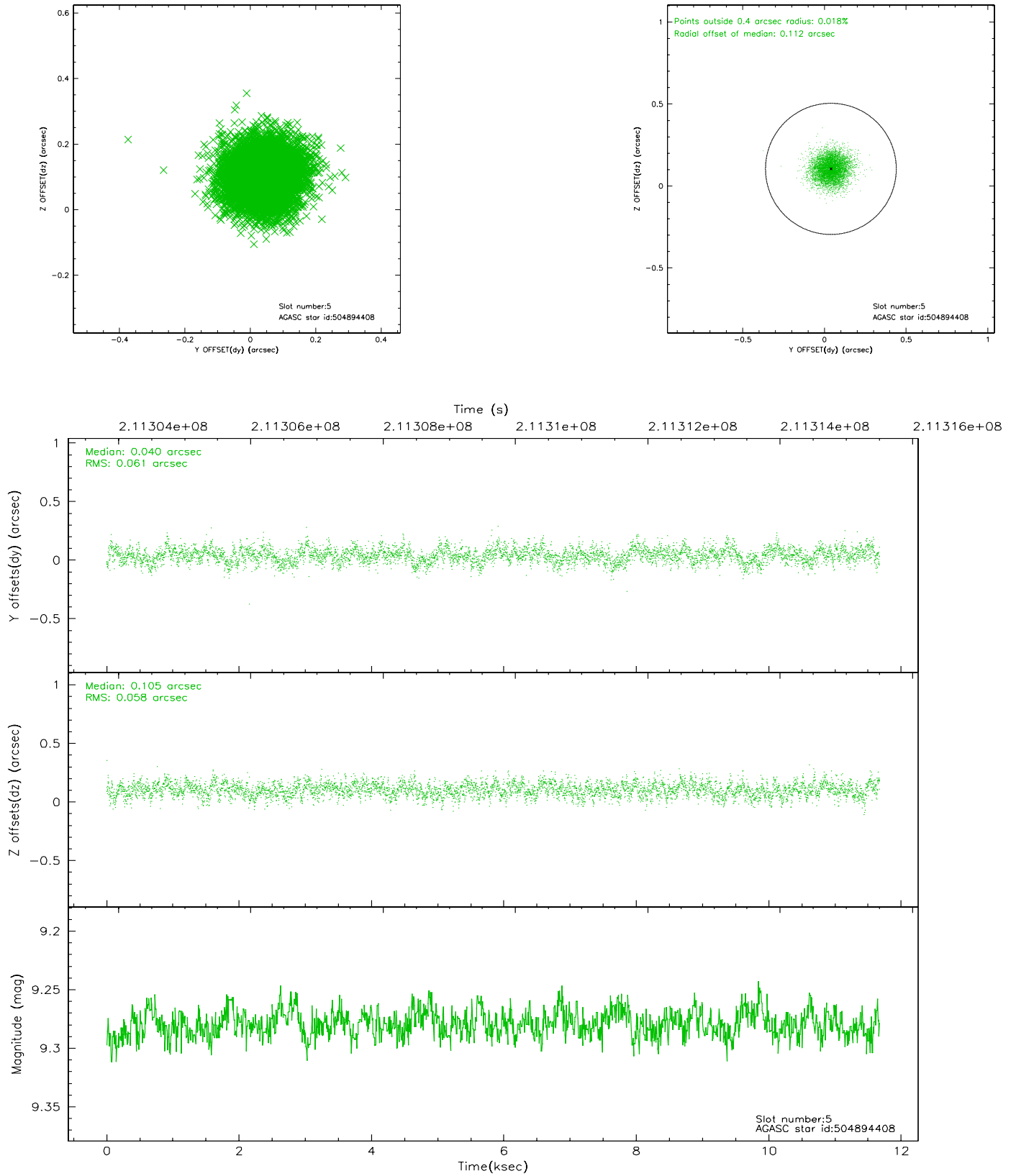
2.4.1 Slot 3



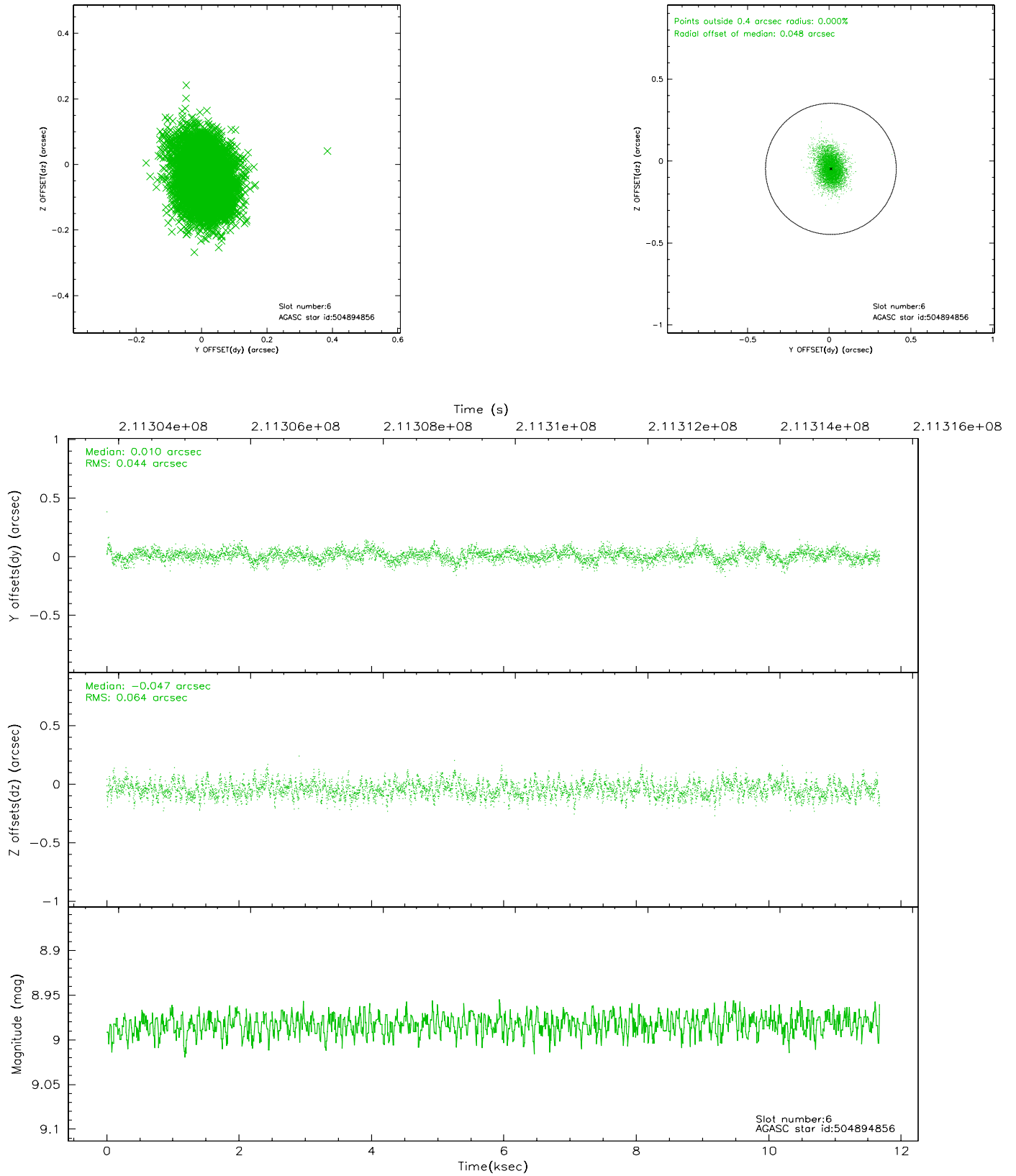
2.4.2 Slot 4



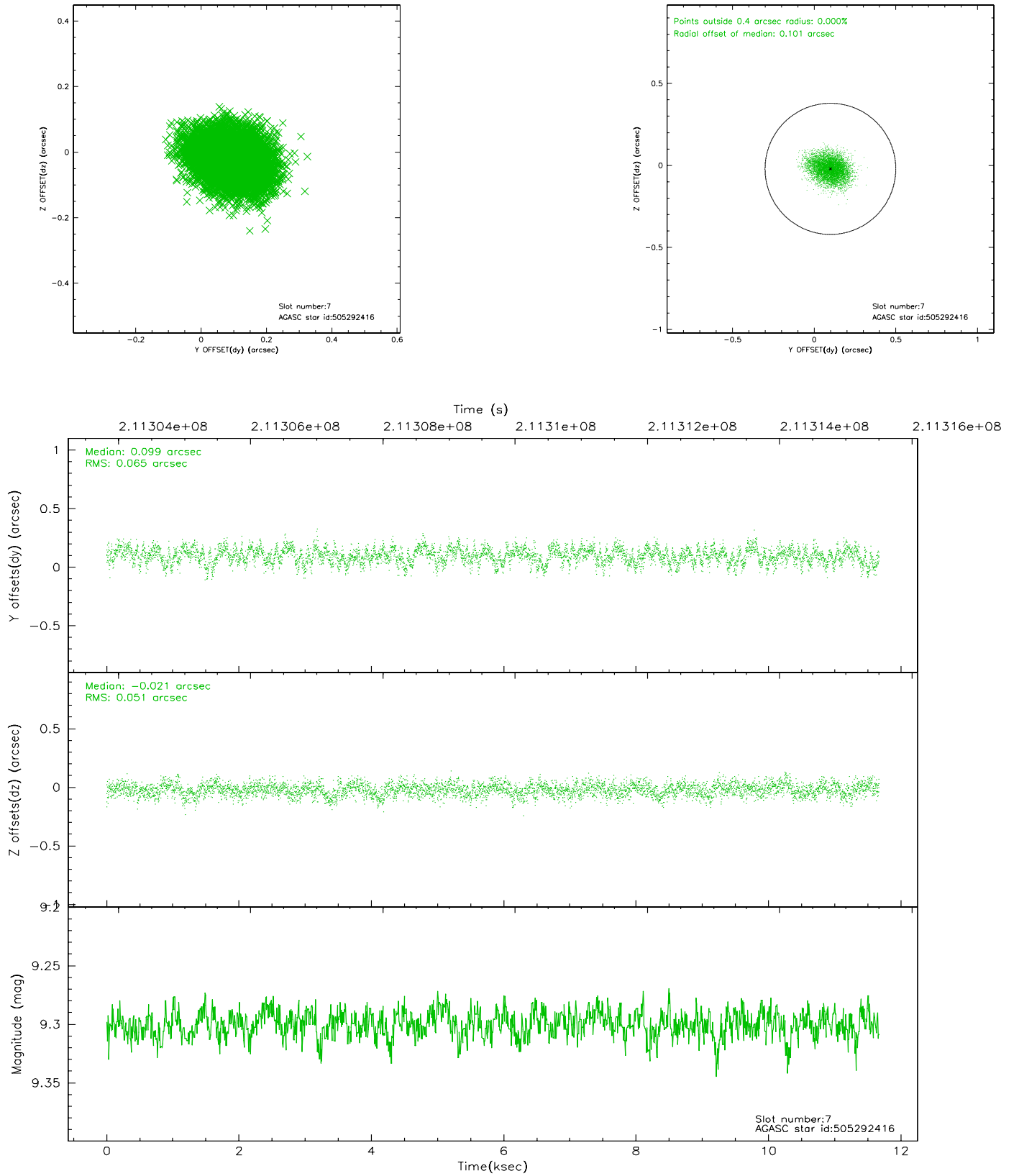
2.4.3 Slot 5



2.4.4 Slot 6

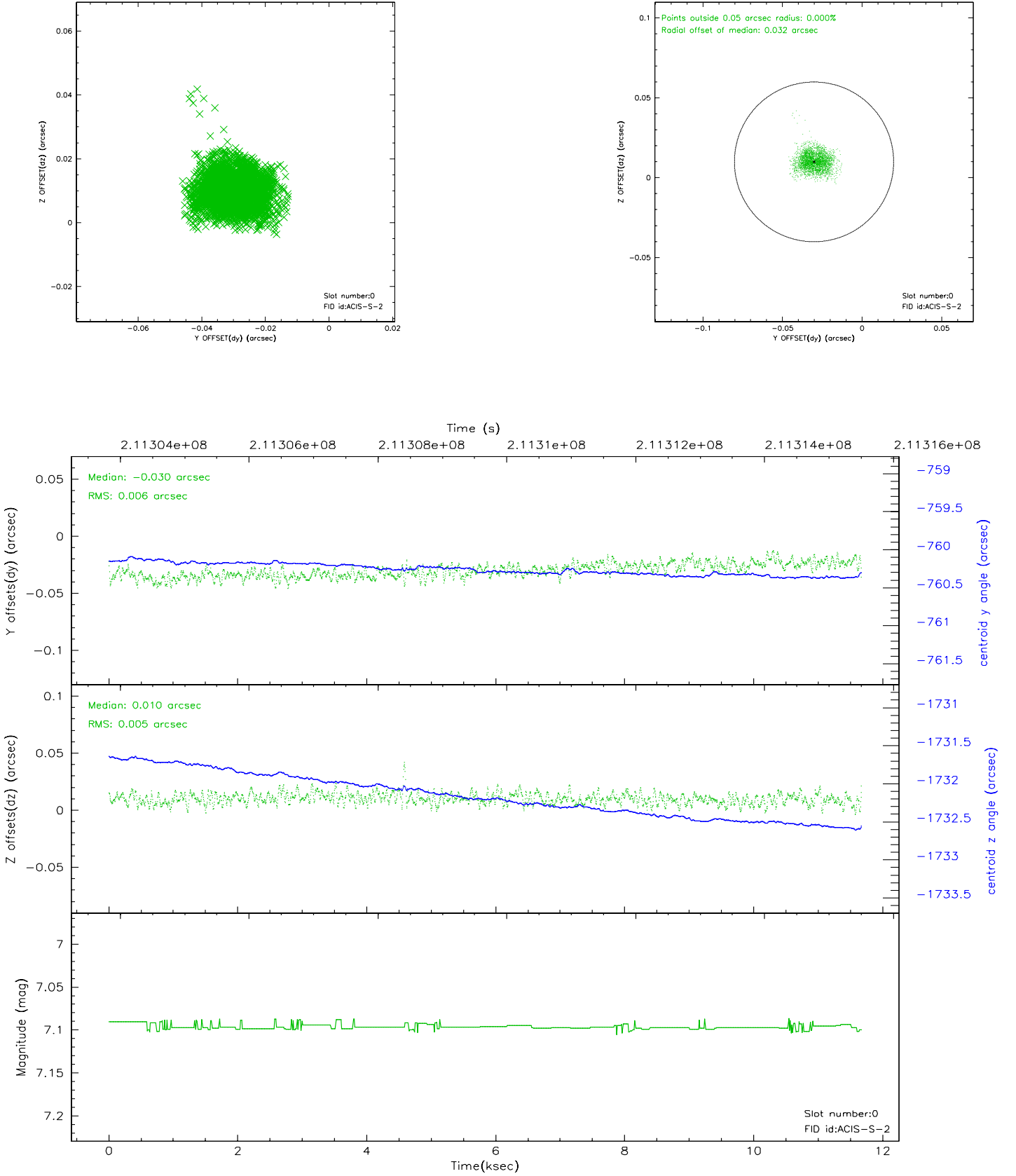


2.4.5 Slot 7

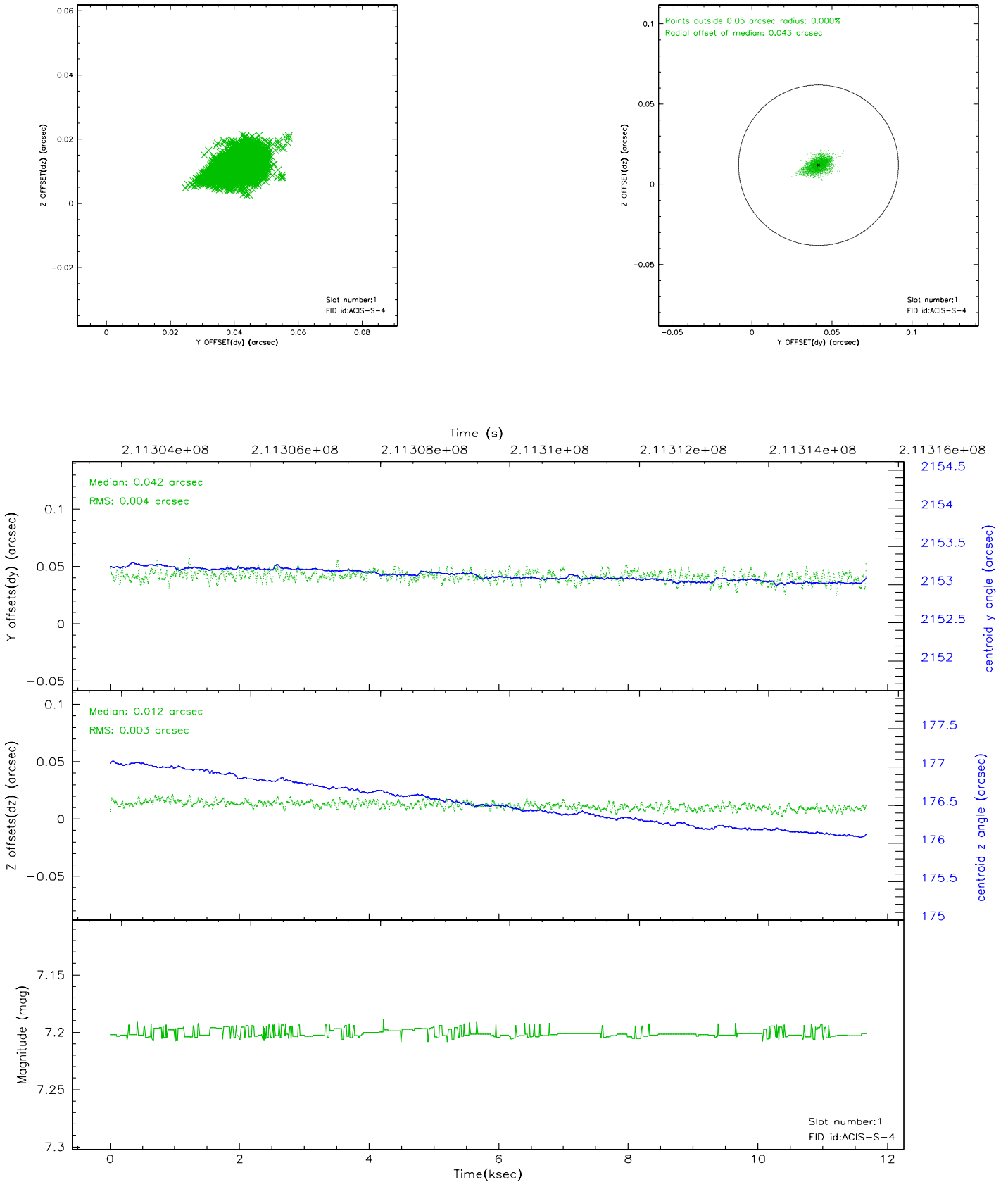


2.5 FID Slots

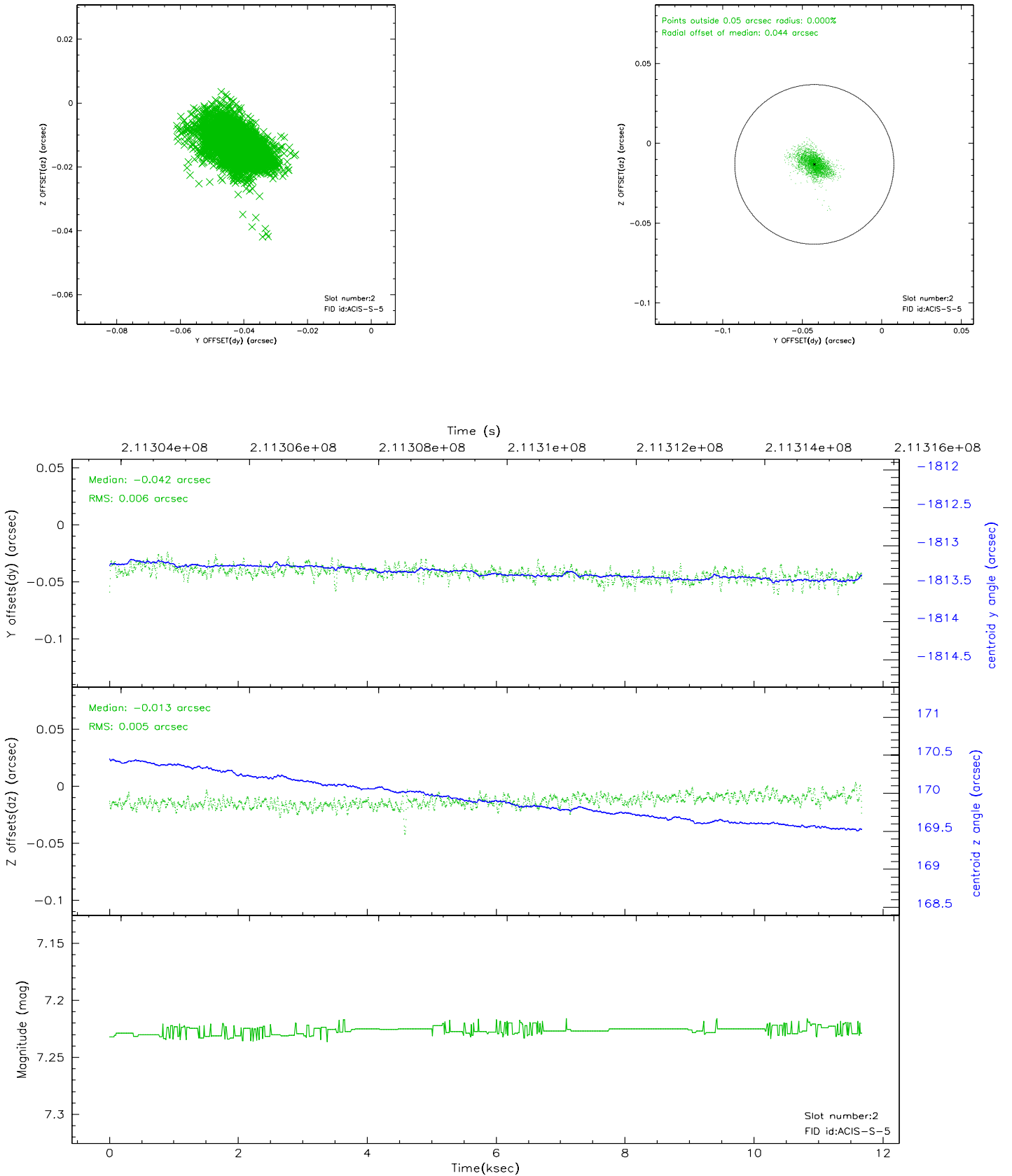
2.5.1 Slot 0



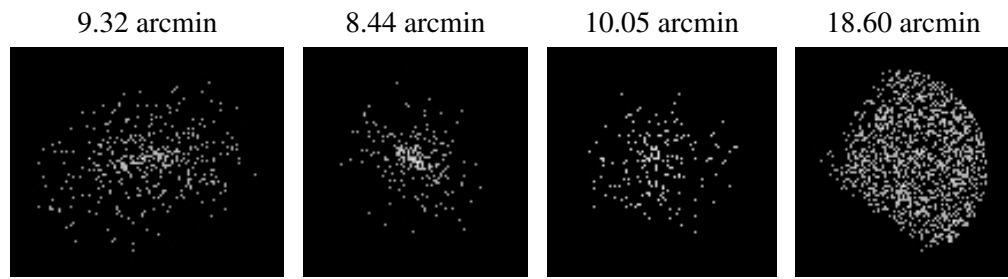
2.5.2 Slot 1



2.5.3 Slot 2



3 Point Sources



A Summary

A.1 Status

V&V Scientist	Beth Sundheim
V&V Date (YYYY-MM-DD)	2006.04.17
V&V Edition	1
V&V Disposition and Status	OK
V&V Charge Time	11.606

A.2 Comments