

V&V Reference Report

L2 ASCDS Version : 7.6.7.2

Observation 5322 - L2 Version 001
Chandra X-Ray Center

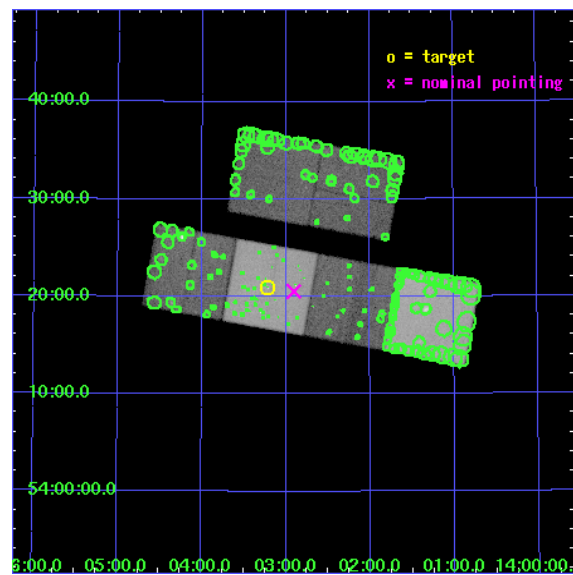
L2 Processing Date : May 22 2006

Contents

1	Front	2
2	OBI	3
2.1	OBI	3
2.1.1	Images	3
2.1.2	Bias	3
2.1.3	Parameters	4
2.1.4	Events	4
2.2	Compared Parameters	5
2.3	Aspect	6
2.4	Star Slots	9
2.4.1	Slot 3	9
2.4.2	Slot 4	10
2.4.3	Slot 5	11
2.4.4	Slot 6	12
2.4.5	Slot 7	13
2.5	FID Slots	14
2.5.1	Slot 0	14
2.5.2	Slot 1	15
2.5.3	Slot 2	16
3	Point Sources	17
A	Summary	18
A.1	Status	18
A.2	Comments	18

1 Front

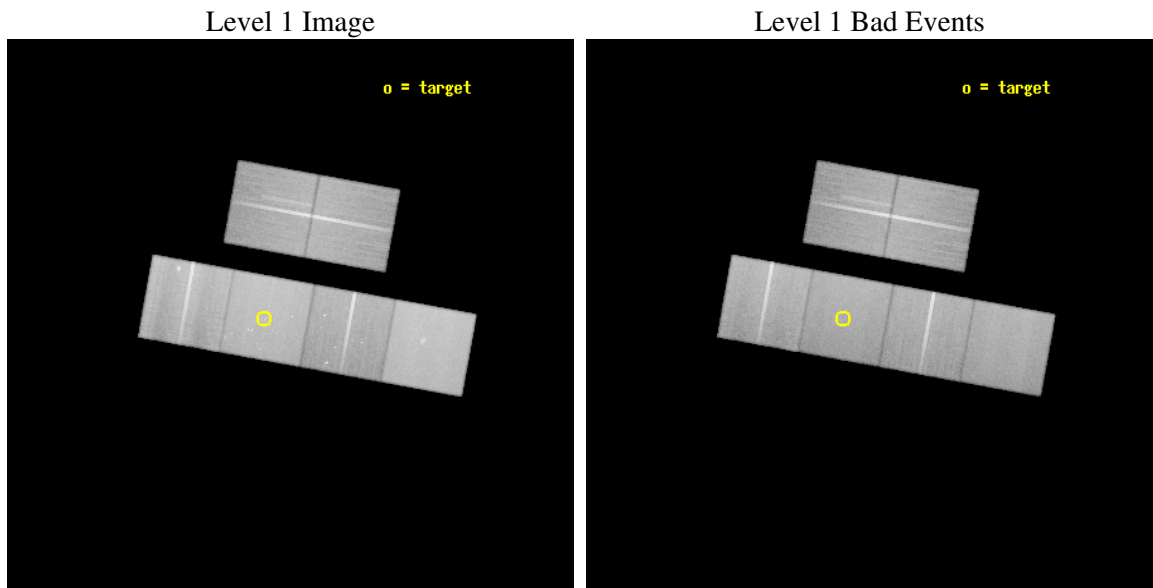
seq_num	600388
obs_id	5322
title	An Ultra-Deep Study of M101
observer	Dr. K. Kuntz
object	M101
dtcycle	0
cycle	P
ra_targ	210.80375
dec_targ	54.348778
ra_nom	210.72612198385
dec_nom	54.342397128446
roll_nom	190.30671691761
revision	3
ontime	65529.599755883
livetime	64699.824506586
ontime2	65519.876835167
ontime3	65529.599755883
ontime5	65529.599755883
ontime6	65523.117815346
ontime7	65529.599755883
ontime8	65526.358885229
l2events	732780



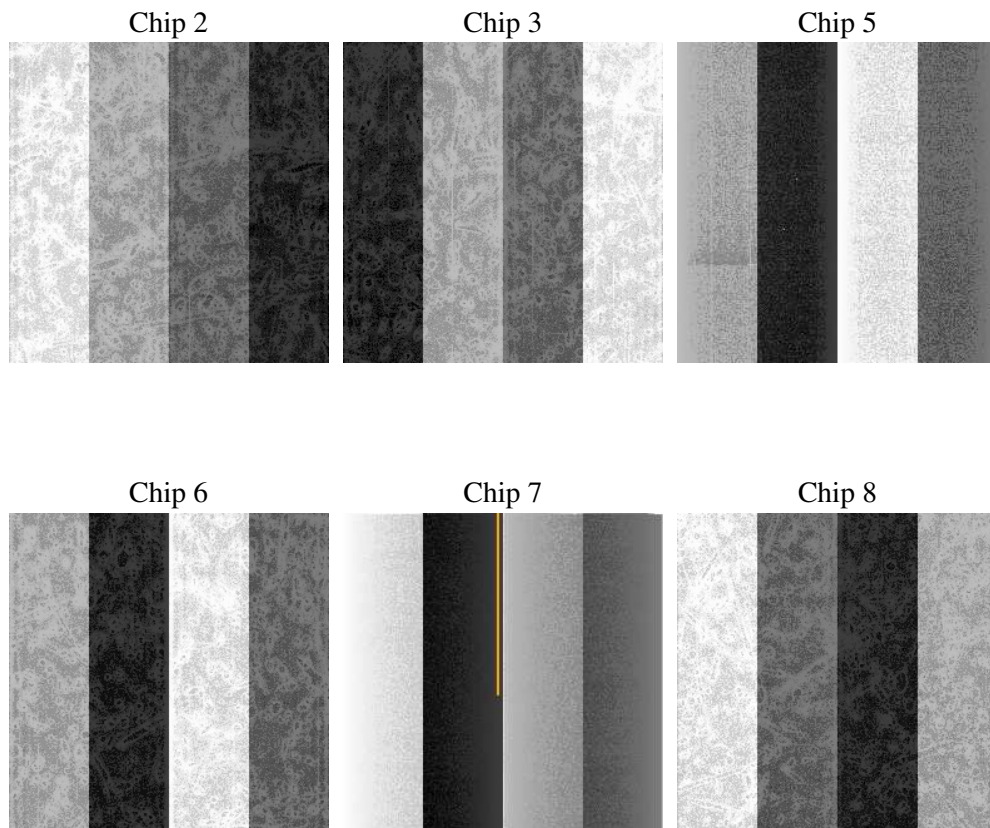
2 OBI

2.1 OBI

2.1.1 Images



2.1.2 Bias



2.1.3 Parameters

obi_num	0
ascdsver	7.6.7.2
caldsver	3.2.2
date	2006-05-22T16:11:29
revision	3

sched_exp_time	65500.000000
ontime	65536.333459705
ontime2	65526.610509068
ontime3	65536.333429784
ontime5	65536.333429784
ontime6	65529.851489246
ontime7	65536.333459705
ontime8	65533.092559129
l1events	3292389

2.1.4 Events

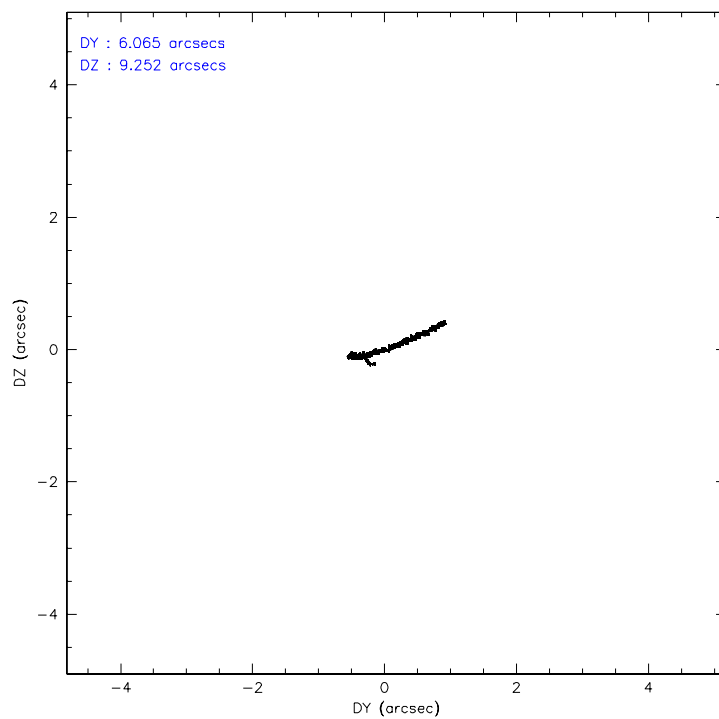
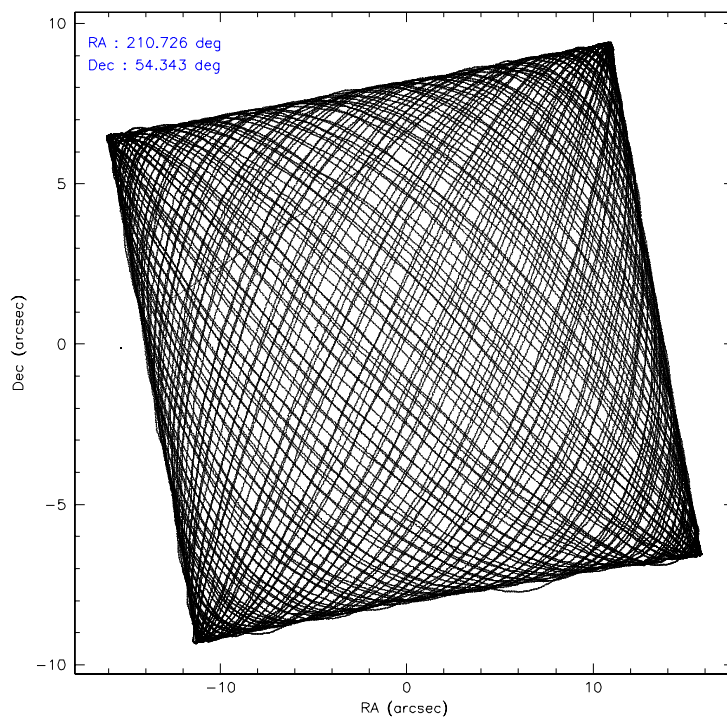
	ccd 2	ccd 3	ccd 5	ccd 6	ccd 7	ccd 8
level 1 events	473934	445392	677843	470593	637666	586961
rejected events	419092	392597	386038	411632	390011	460820
rejected %	88%	88%	56%	87%	61%	78%

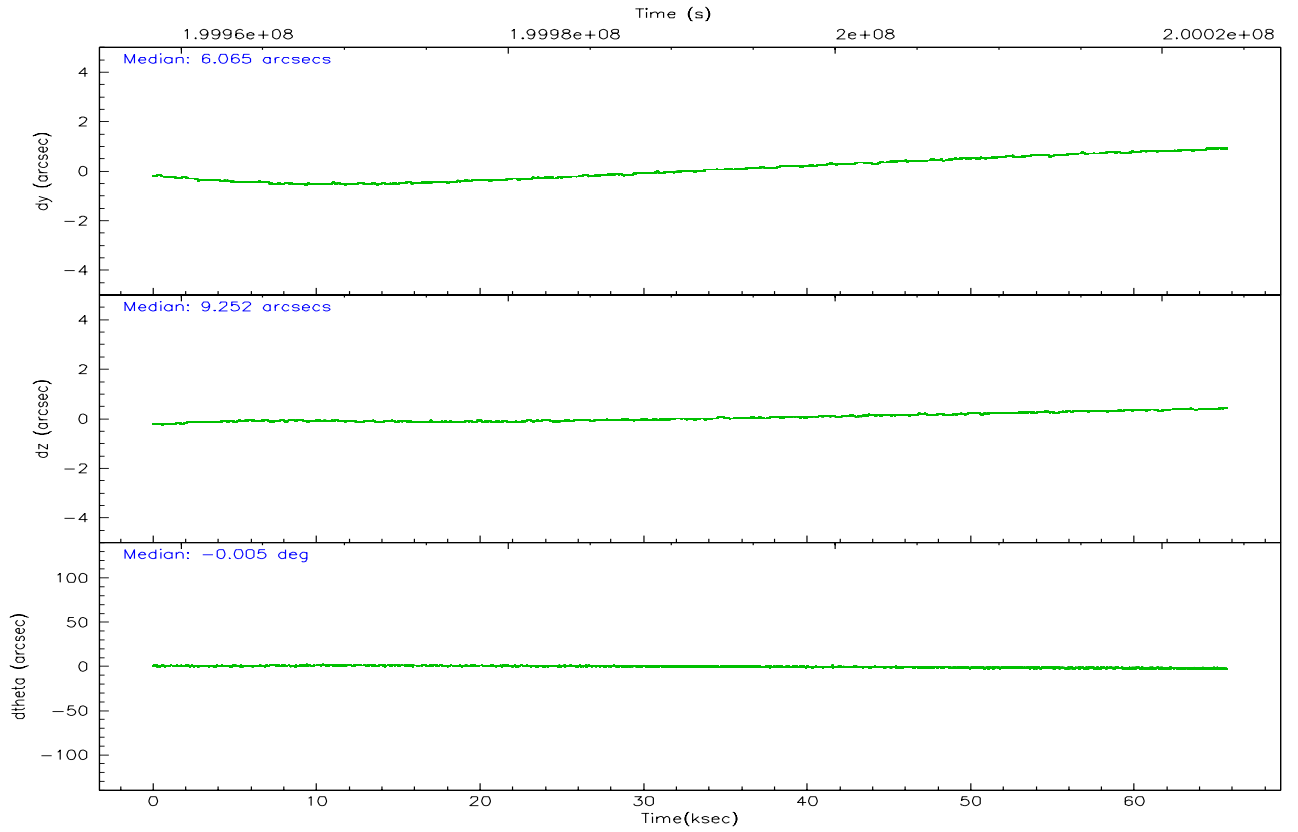
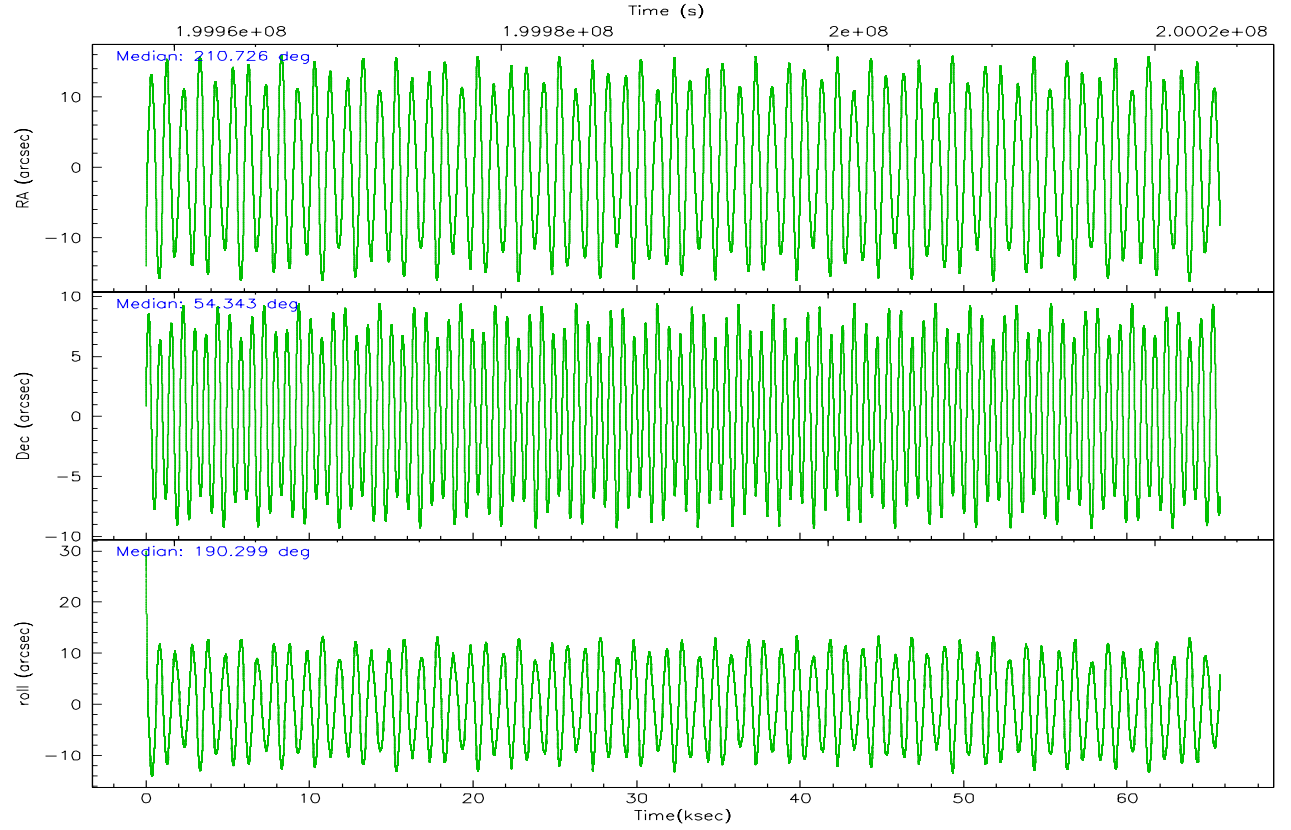
	ccd 2	ccd 3	ccd 5	ccd 6	ccd 7	ccd 8
grade 0 events	24091	22696	12943	25040	17910	42404
	5%	5%	1%	5%	2%	7%
grade 1 events	308	278	557	250	347	375
	0%	0%	0%	0%	0%	0%
grade 2 events	11159	10371	92261	11936	61512	27457
	2%	2%	13%	2%	9%	4%
grade 3 events	5210	5209	6797	5491	12909	12736
	1%	1%	1%	1%	2%	2%
grade 4 events	5143	5215	6531	5412	12689	11951
	1%	1%	0%	1%	1%	2%
grade 5 events	18815	20370	33618	21444	41444	28264
	3%	4%	4%	4%	6%	4%
grade 6 events	9241	9311	173311	11088	142672	31597
	1%	2%	25%	2%	22%	5%
grade 7 events	399967	371942	351825	389932	348183	432177
	84%	83%	51%	82%	54%	73%

2.2 Compared Parameters

Parameter	Planned	Actual	Parameter	Planned	Actual
Instrument	ACIS	ACIS	Obspar format version number	6	6
Detector	ACIS-235678	ACIS-235678	Obspar file type	PREDICTED	ACTUAL
Grating	NONE	NONE	Obspar update status	NONE	UPDATED
Data mode	VFAINT	VFAINT	On-chip summing requested	N	N
Observation mode	POINTING	POINTING	Subarray requested	NONE	NONE
Pointing RA	210.761309	210.7261219838505	Alternating exposures requested	N	N
Pointing Dec	54.360289	54.34239712844624	Primary exposure time	0.000000	3.2
Pointing Roll	190.121490	190.3067169176135			
SIM focus pos (mm)	-0.684267	-0.6828225247311905			
SIM defocus (mm)	0	0.001444936568705701			
SIM translation stage pos (mm)	-190.132523	-190.1400660498719			
SIM translation stage offset (mm)	0	0.00754346686406393			
Observation start time	199958474.184000	199957475.52735			
Observation start date	2004-05-03T08:00:10	2004-05-03T07:44:35			
Observation end time	200023974.184000	200024757.55531			
Observation end date	2004-05-04T02:11:50	2004-05-04T02:25:57			
Read mode	TIMED	TIMED			

2.3 Aspect



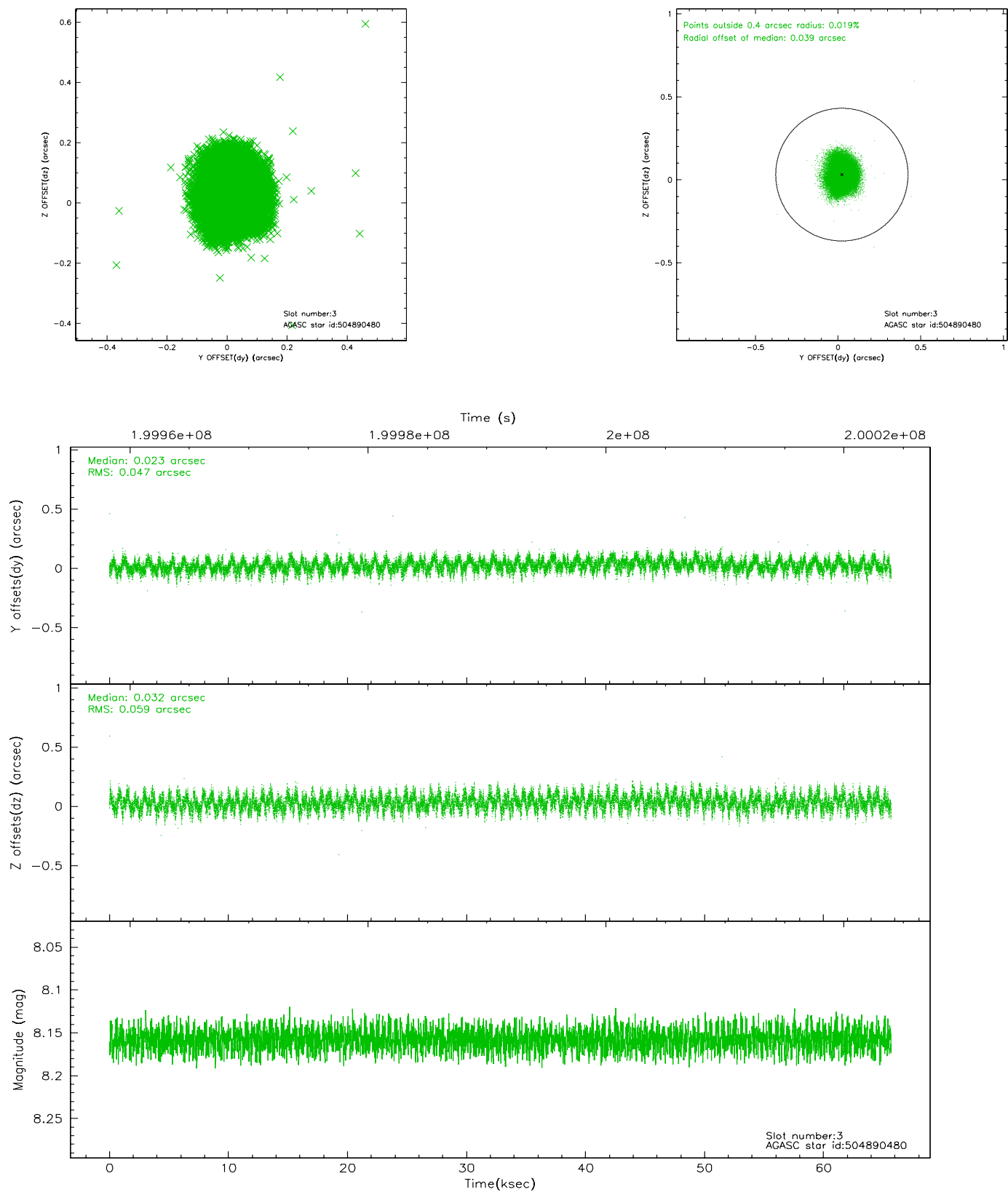


Slot Statistics

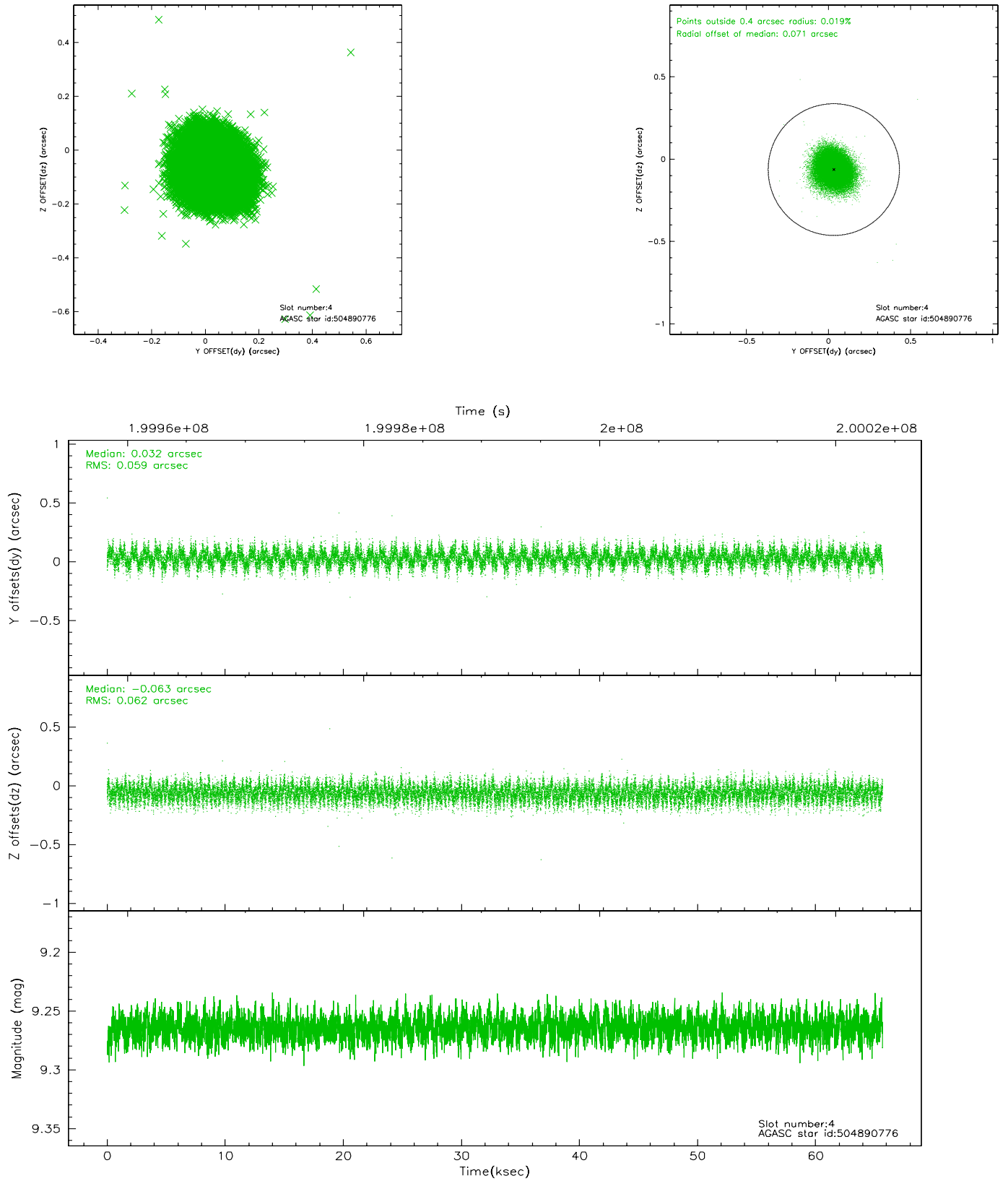
slot	status	id	mag	n_pts	med_dy	med_dz	dr1	dr2	ra	dec	mean_y	mean_z
0	FID	ACIS-S-1	7.18	16019	-0.008	0.016	0.010	0.015	0.000000	0.000000	937.14	-1726.16
1	FID	ACIS-S-4	7.20	16021	0.034	-0.003	0.010	0.024	0.000000	0.000000	2154.57	178.03
2	FID	ACIS-S-5	7.23	16021	-0.052	-0.001	0.009	0.020	0.000000	0.000000	-1811.82	171.59
3	GUIDE	504890480	8.16	32036	0.023	0.032	0.082	0.129	210.132463	53.768436	1691.15	1857.50
4	GUIDE	504890776	9.26	32022	0.032	-0.063	0.091	0.145	211.095934	54.816966	-972.04	-1497.88
5	GUIDE	504891480	8.07	32034	0.140	-0.091	0.105	0.152	210.708012	54.666096	-83.78	-1103.10
6	GUIDE	504894408	9.26	32013	-0.102	0.101	0.137	0.210	211.942794	54.047749	-2264.24	1526.04
7	GUIDE	505292416	9.27	32026	-0.106	0.036	0.300	0.411	210.920759	55.040479	-753.62	-2353.16

2.4 Star Slots

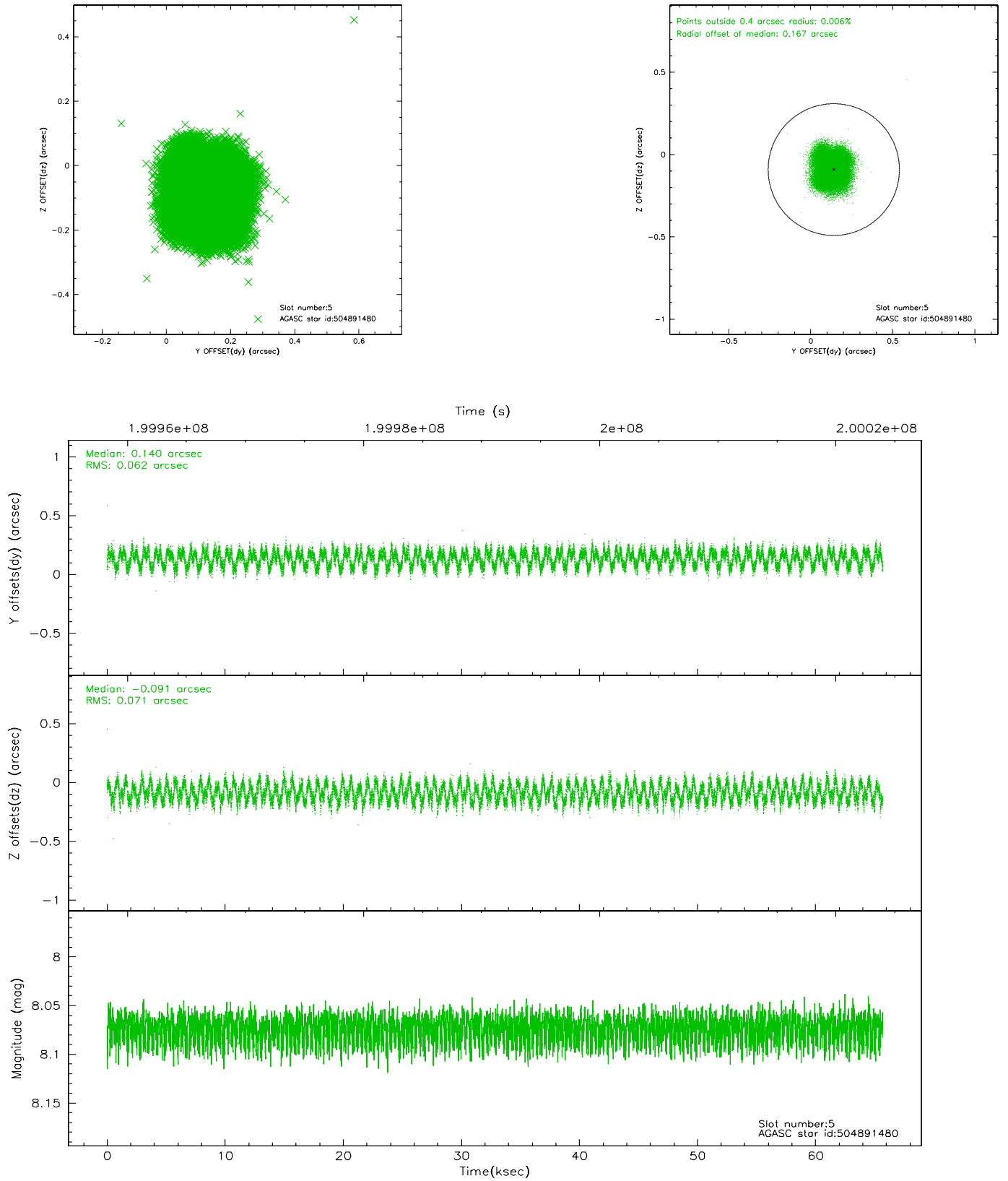
2.4.1 Slot 3



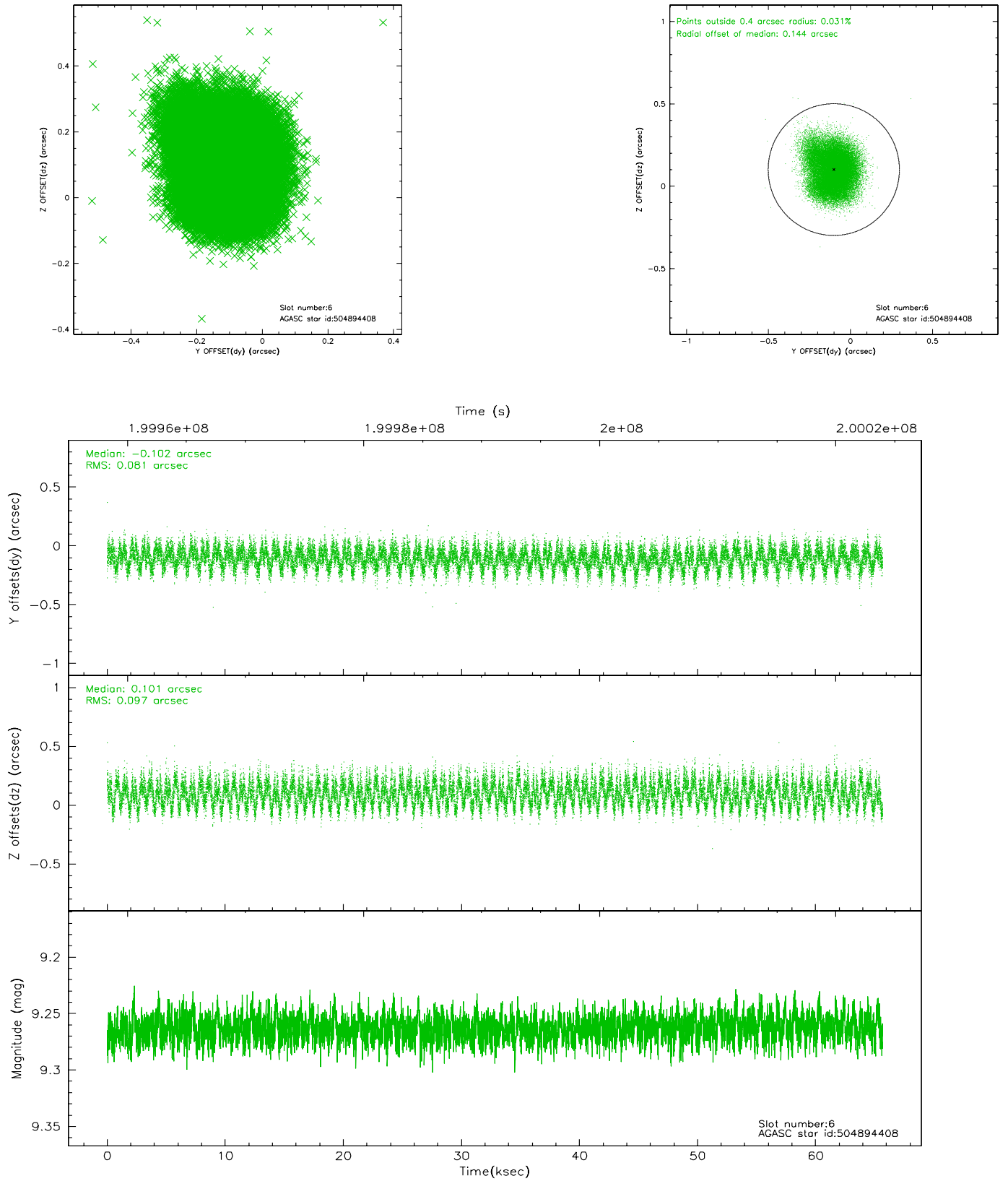
2.4.2 Slot 4



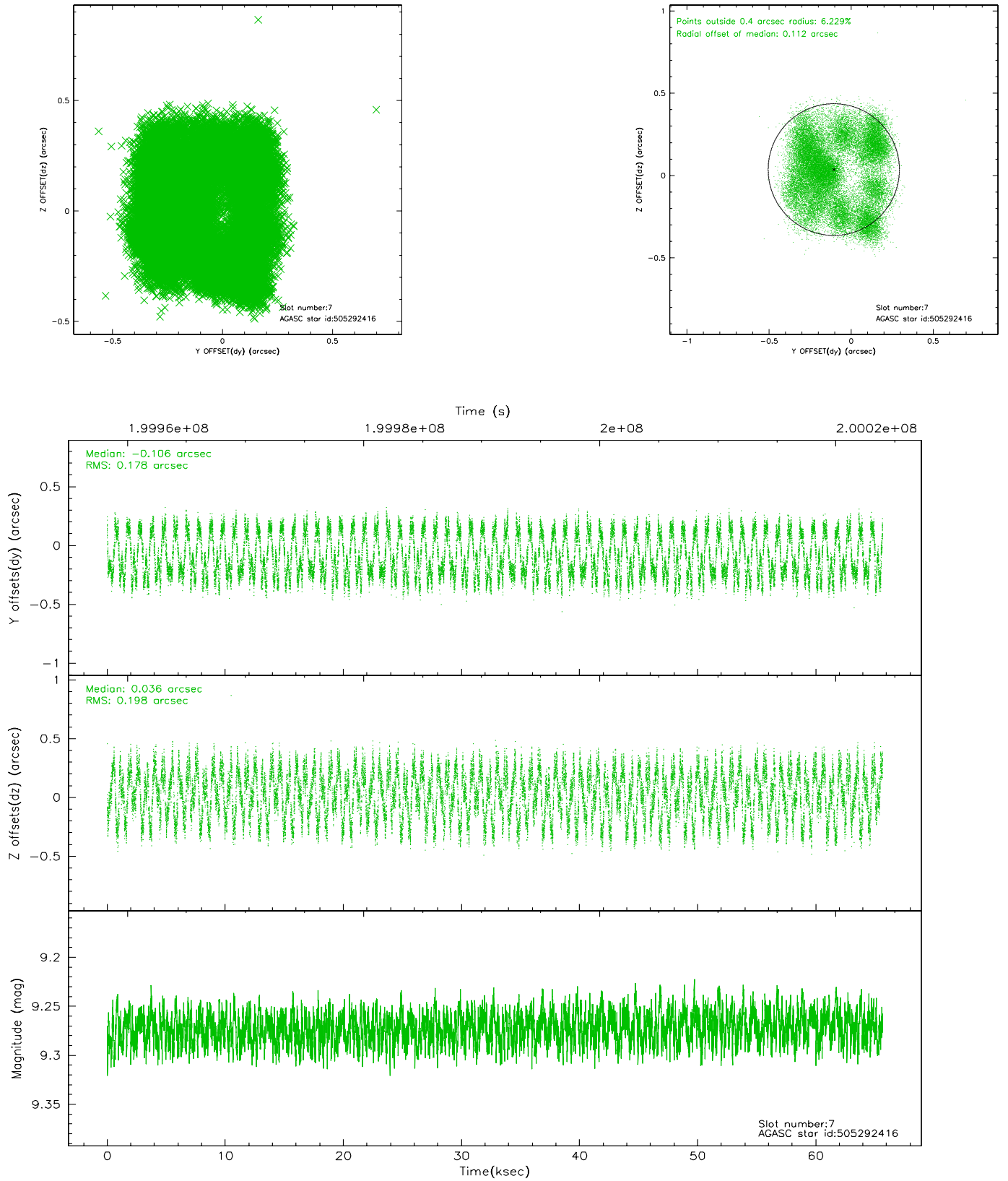
2.4.3 Slot 5



2.4.4 Slot 6

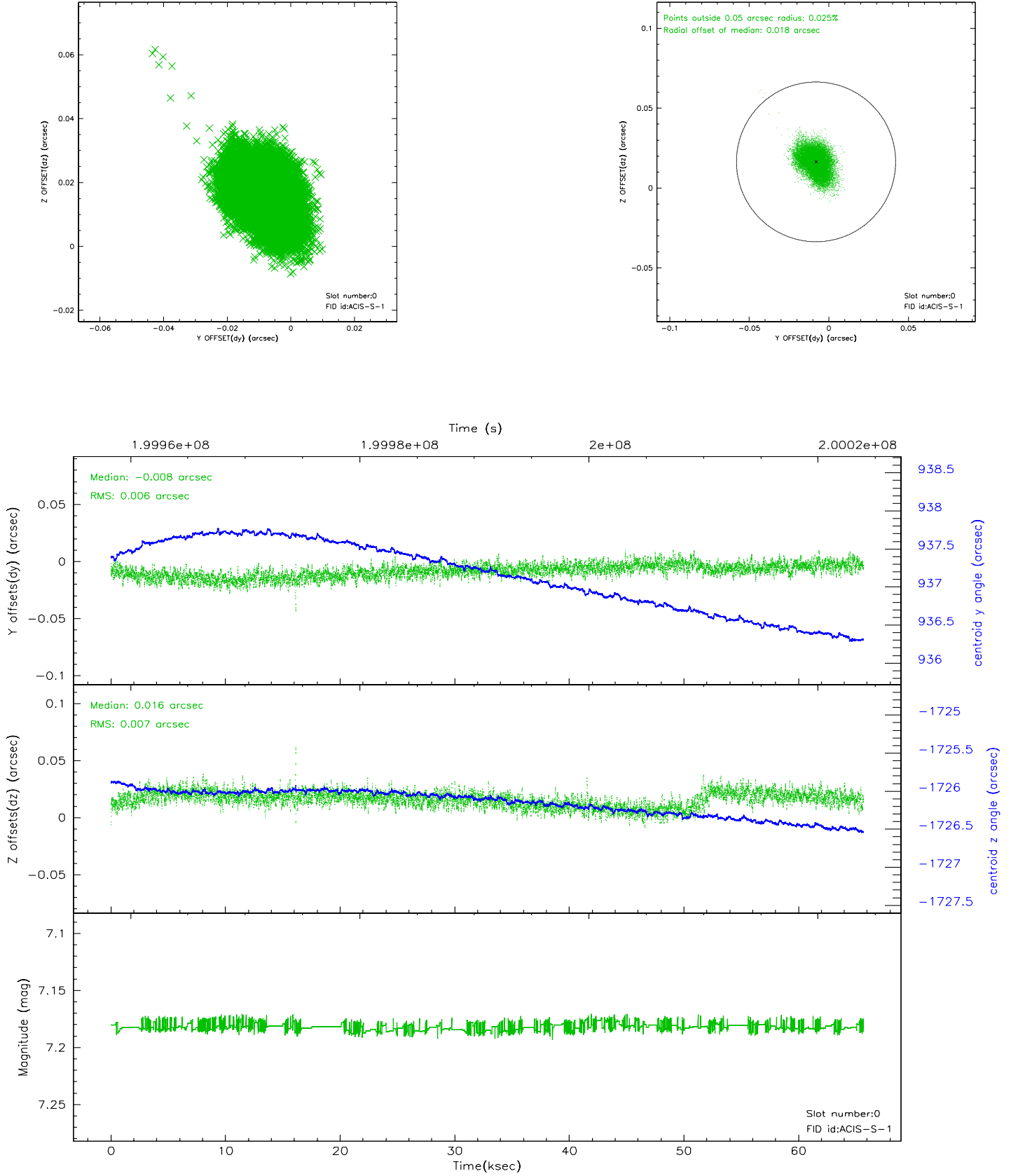


2.4.5 Slot 7

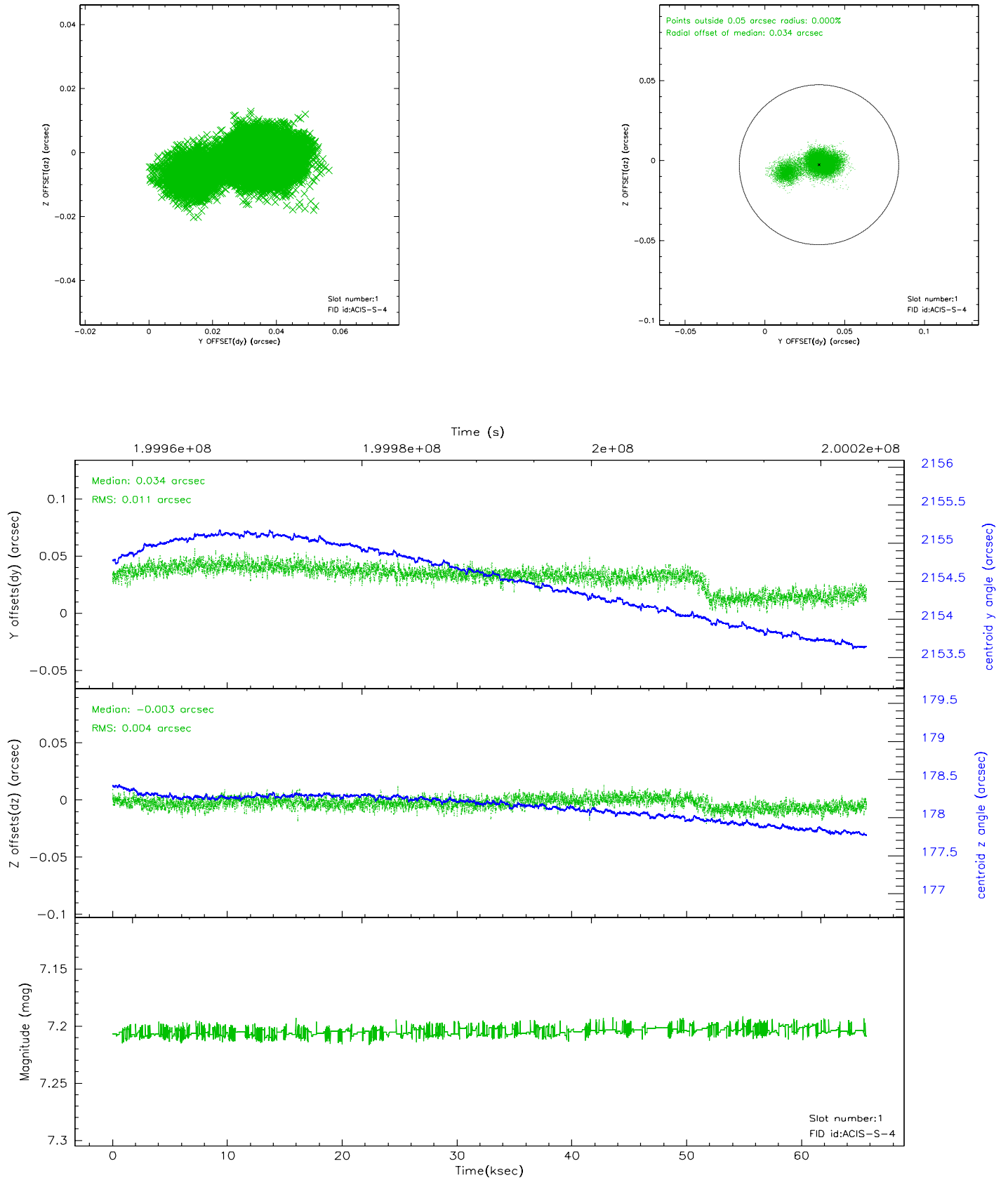


2.5 FID Slots

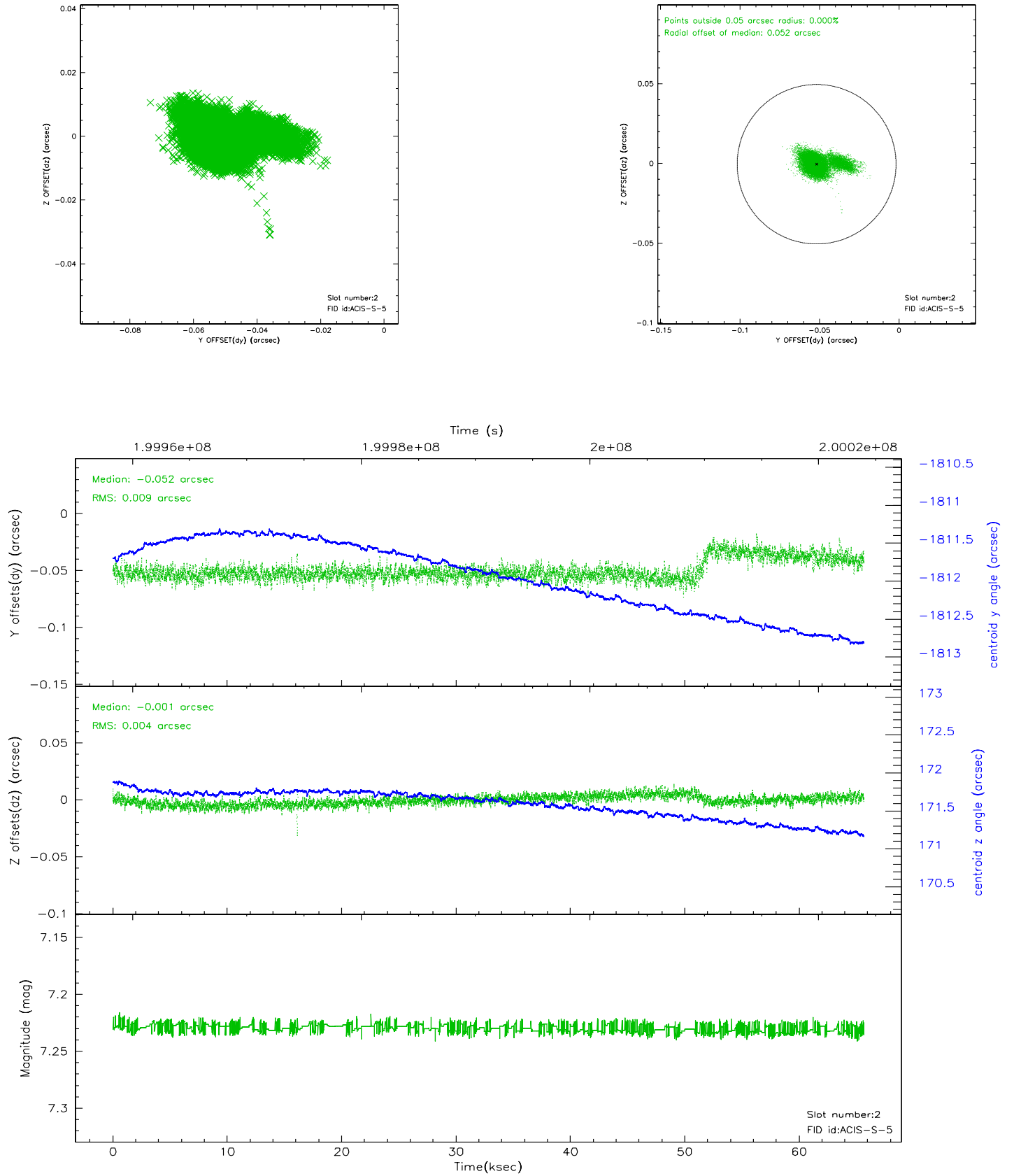
2.5.1 Slot 0



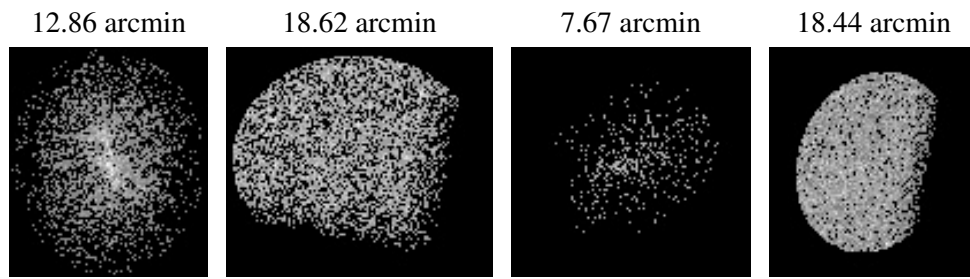
2.5.2 Slot 1



2.5.3 Slot 2



3 Point Sources



A Summary

A.1 Status

V&V Scientist	Beth Sundheim
V&V Date (YYYY-MM-DD)	2006.05.22
V&V Edition	1
V&V Disposition and Status	OK
V&V Charge Time	65.532

A.2 Comments