

V&V Reference Report

L2 ASCDS Version : 7.6.8

Observation 4754 - L2 Version 001
Chandra X-Ray Center

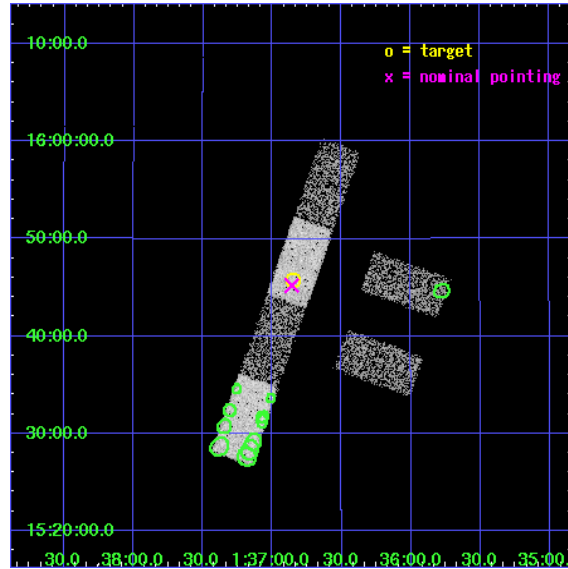
L2 Processing Date : Jun 22 2006

Contents

1	Front	2
2	OBI	3
2.1	OBI	3
2.1.1	Images	3
2.1.2	Bias	3
2.1.3	Parameters	4
2.1.4	Events	4
2.2	Compared Parameters	5
2.3	Aspect	6
2.4	Star Slots	9
2.4.1	Slot 3	9
2.4.2	Slot 4	10
2.4.3	Slot 5	11
2.4.4	Slot 6	12
2.4.5	Slot 7	13
2.5	FID Slots	14
2.5.1	Slot 0	14
2.5.2	Slot 1	15
2.5.3	Slot 2	16
3	Point Sources	17
A	Summary	18
A.1	Status	18
A.2	Comments	18

1 Front

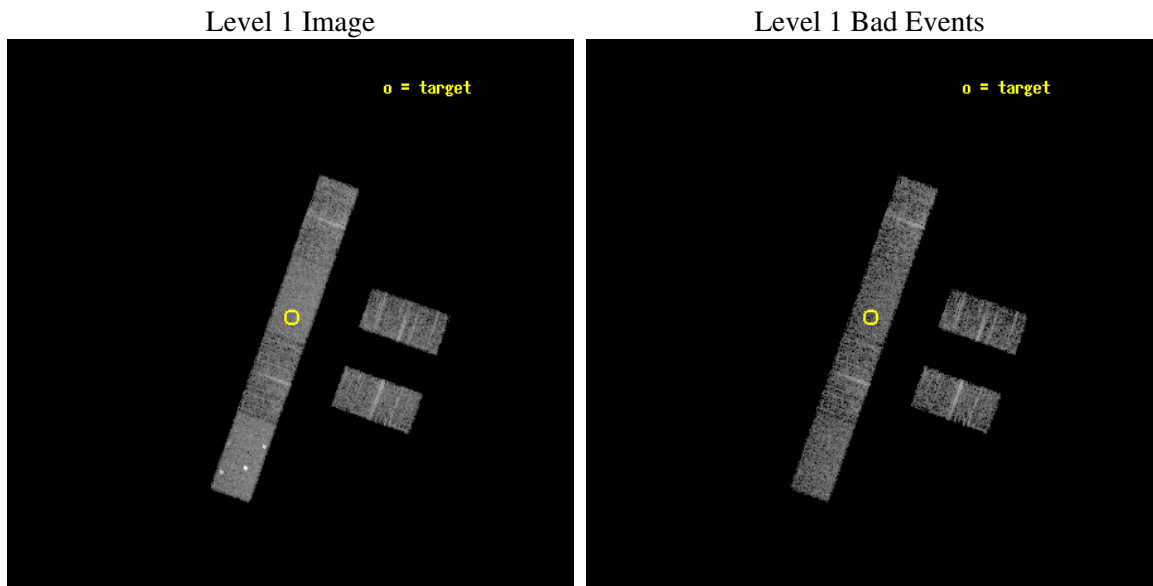
seq_num	600409
obs_id	4754
title	Observations of Intermediate Mass Black Hole Candidate Ultra-Luminous X-ray Sources
observer	Dr Jon Miller
object	M74 X-1 Obs 2
dtcycle	0
cycle	P
ra_targ	24.212917
dec_targ	15.763056
ra_nom	24.214636338192
dec_nom	15.753626915173
roll_nom	289.5513325239
revision	2
ontime	5158.8000341654
livetime	5043.801363087
ontime2	5158.8000341654
ontime3	5158.8000341654
ontime5	5158.8000341654
ontime6	5158.8000341654
ontime7	5158.8000341654
ontime8	5158.8000341654
l2events	25598



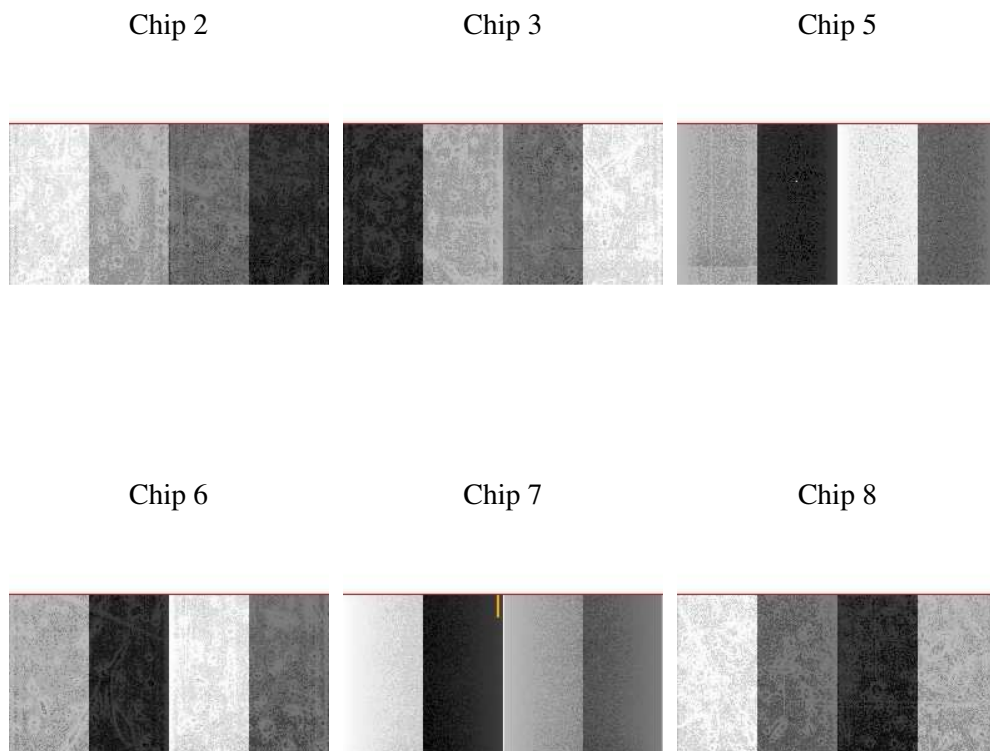
2 OBI

2.1 OBI

2.1.1 Images



2.1.2 Bias



2.1.3 Parameters

obi_num	0
ascdsver	7.6.8
caldsver	3.2.2
date	2006-06-22T13:43:28
revision	2

sched_exp_time	5000.000000
ontime	5629.8350749016
ontime2	5629.8350749016
ontime3	5629.8350749016
ontime5	5629.8350749016
ontime6	5629.8350749016
ontime7	5629.8350749016
ontime8	5629.8350749016
l1events	134085

2.1.4 Events

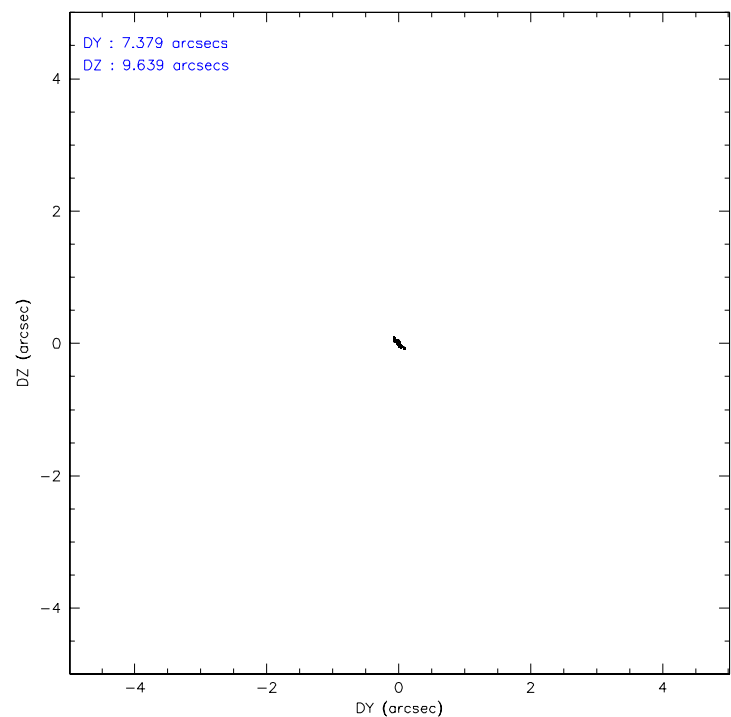
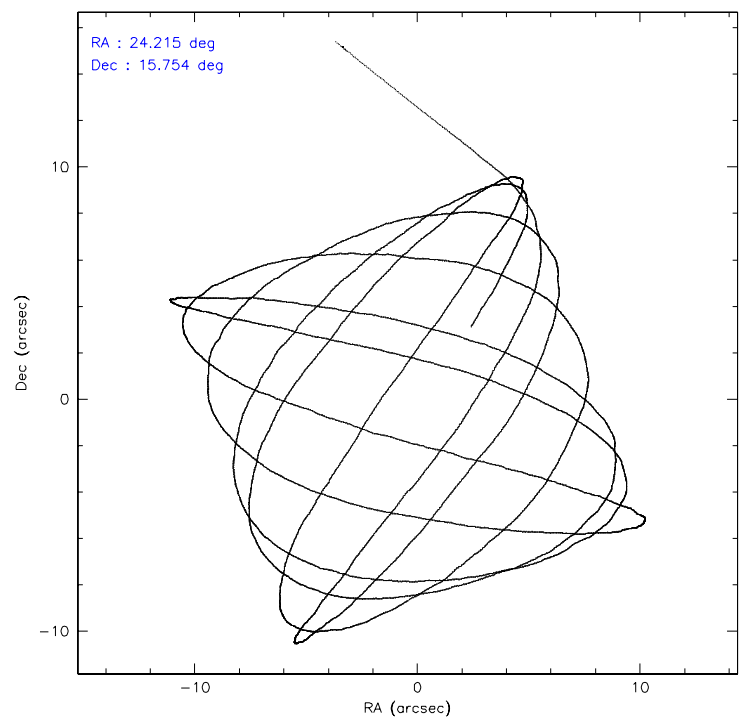
	ccd 2	ccd 3	ccd 5	ccd 6	ccd 7	ccd 8
level 1 events	19613	17561	30487	18471	24646	23307
rejected events	17504	15623	16251	16498	15750	19252
rejected %	89%	88%	53%	89%	63%	82%

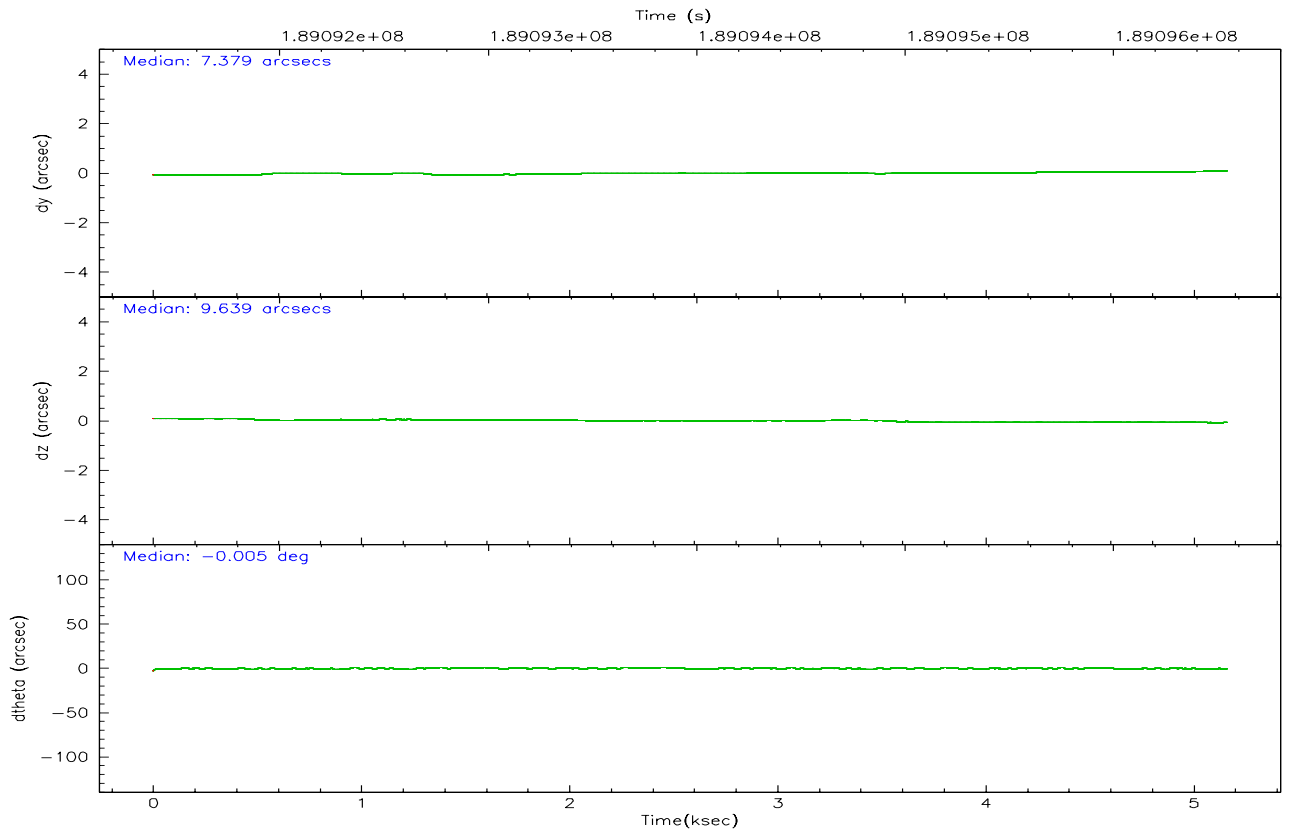
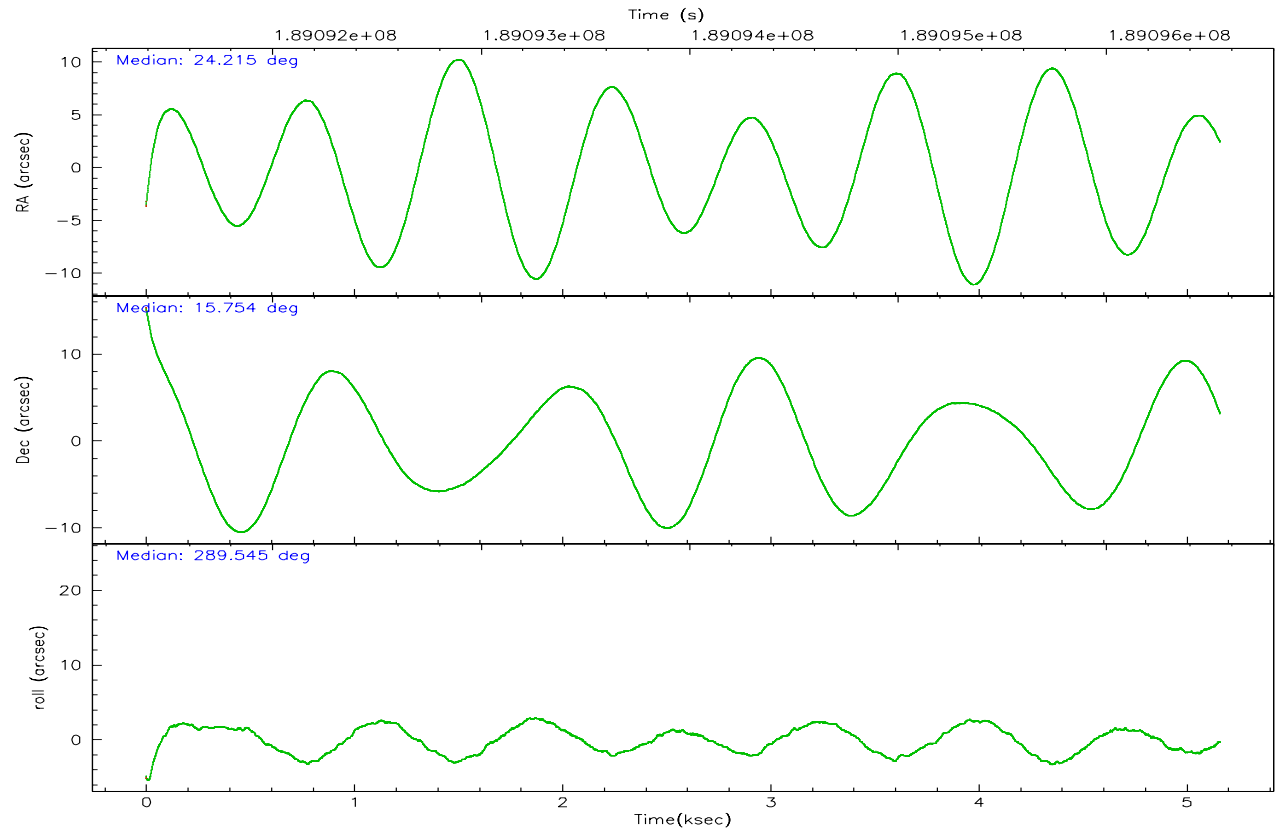
	ccd 2	ccd 3	ccd 5	ccd 6	ccd 7	ccd 8
grade 0 events	958	878	4523	800	646	1279
	4%	4%	14%	4%	2%	5%
grade 1 events	9	6	22	8	24	16
	0%	0%	0%	0%	0%	0%
grade 2 events	434	369	3932	428	2414	1074
	2%	2%	12%	2%	9%	4%
grade 3 events	259	237	290	261	576	479
	1%	1%	0%	1%	2%	2%
grade 4 events	233	237	271	271	540	427
	1%	1%	0%	1%	2%	1%
grade 5 events	678	777	1273	810	1656	1004
	3%	4%	4%	4%	6%	4%
grade 6 events	398	375	6560	404	5564	1190
	2%	2%	21%	2%	22%	5%
grade 7 events	16644	14682	13616	15489	13226	17838
	84%	83%	44%	83%	53%	76%

2.2 Compared Parameters

Parameter	Planned	Actual	Parameter	Planned	Actual
Instrument	ACIS	ACIS	Obspar format version number	6	6
Detector	ACIS-235678	ACIS-235678	Obspar file type	PREDICTED	ACTUAL
Grating	NONE	NONE	Obspar update status	NONE	UPDATED
Data mode	FAINT	FAINT	On-chip summing requested	N	N
Observation mode	POINTING	POINTING	Subarray requested	1/2	1/2
Pointing RA	24.192782	24.2146363381917	Subarray start row	0	257
Pointing Dec	15.770899	15.75362691517265	Subarray row count	1024	512
Pointing Roll	289.400662	289.5513325239008	Alternating exposures requested	N	N
SIM focus pos (mm)	-0.684267	-0.6828225247311905	Primary exposure time	0.000000	1.8
SIM defocus (mm)	0	0.001444936568705701			
SIM translation stage pos (mm)	-190.132523	-190.1425803651734			
SIM translation stage offset (mm)	0	0.01005778216563158			
Observation start time	189091551.184000	189090478.35124			
Observation start date	2003-12-29T13:24:47	2003-12-29T13:07:58			
Observation end time	189096551.184000	189098309.35158			
Observation end date	2003-12-29T14:48:07	2003-12-29T15:18:29			
Read mode	TIMED	TIMED			

2.3 Aspect



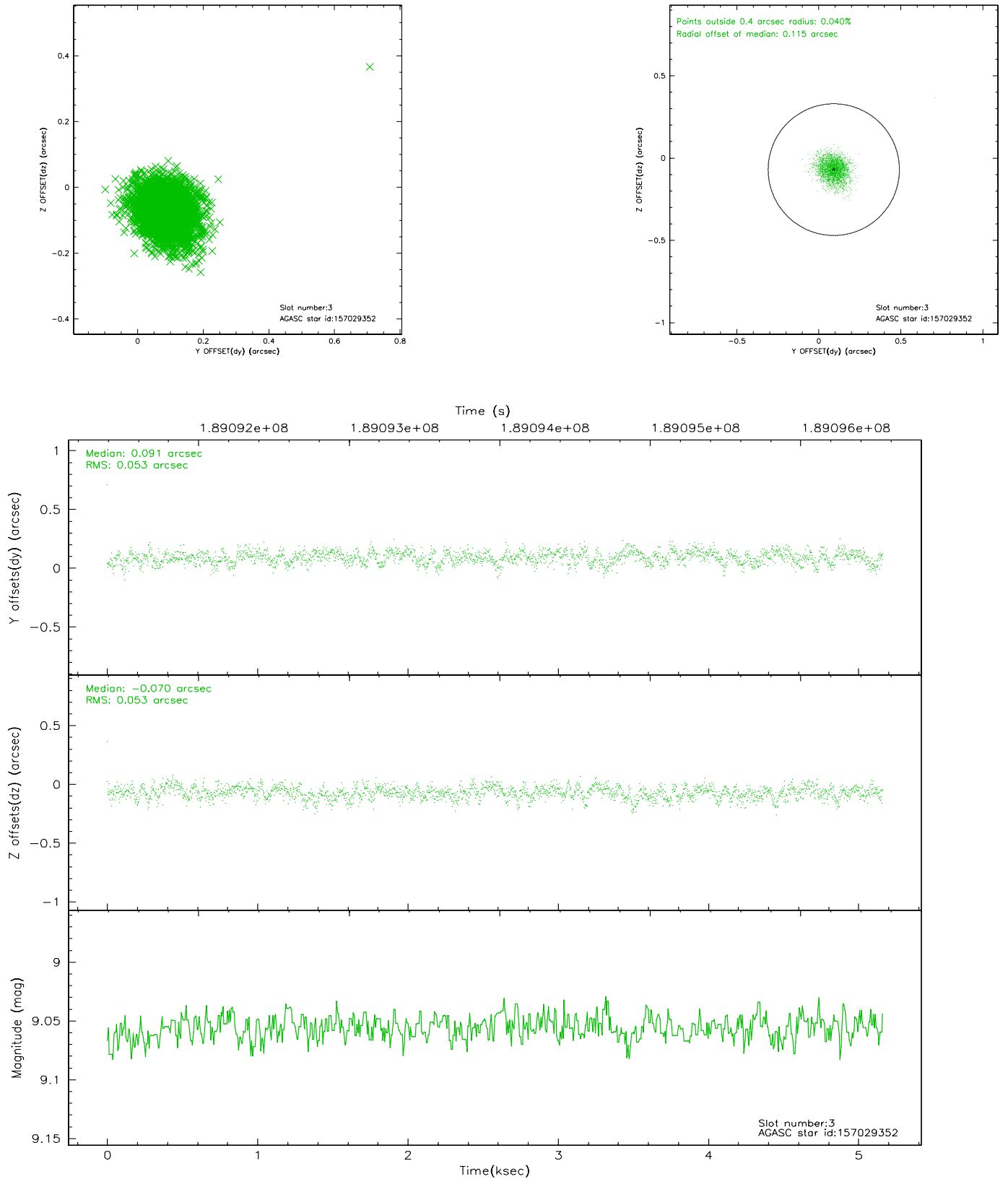


Slot Statistics

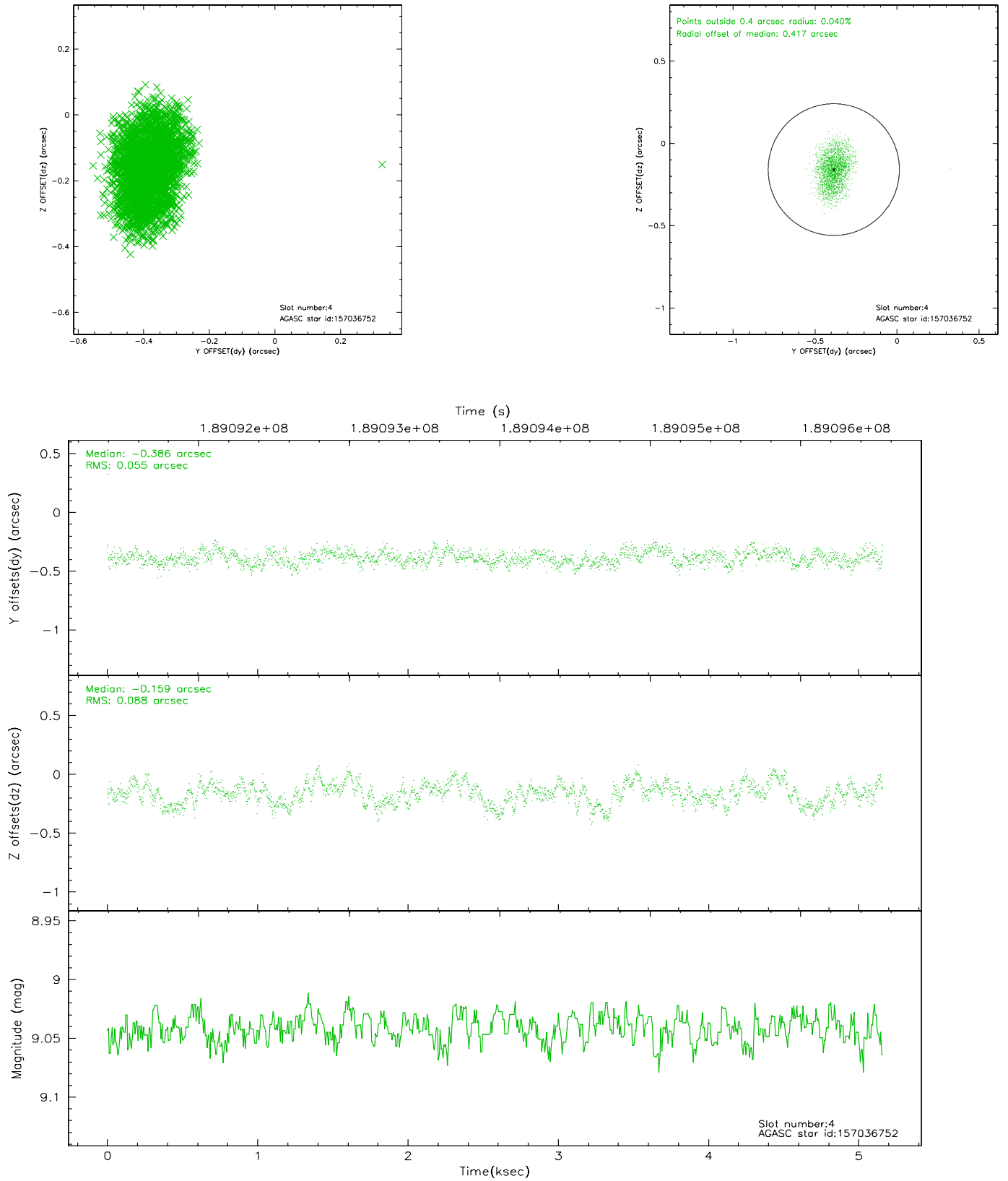
slot	status	id	mag	n_pts	med_dy	med_dz	dr1	dr2	ra	dec	mean_y	mean_z
0	FID	ACIS-S-2	7.09	1259	-0.016	0.010	0.006	0.010	0.000000	0.000000	-760.12	-1730.83
1	FID	ACIS-S-4	7.20	1260	0.020	0.011	0.006	0.010	0.000000	0.000000	2152.63	176.49
2	FID	ACIS-S-6	7.34	1260	-0.031	-0.013	0.007	0.011	0.000000	0.000000	403.31	815.17
3	GUIDE	157029352	9.06	2519	0.091	-0.070	0.078	0.128	23.764744	15.271289	1202.21	-1999.12
4	GUIDE	157036752	9.04	2519	-0.386	-0.159	0.111	0.180	23.400830	16.130370	-2134.41	-2153.31
5	GUIDE	157943240	8.97	2518	-0.089	0.128	0.082	0.134	24.500363	16.361777	-1654.90	1707.91
6	GUIDE	157954272	8.71	2518	0.129	0.249	0.071	0.113	24.932144	15.423798	2026.59	2007.50
7	GUIDE	82183064	9.15	2518	0.255	-0.140	0.099	0.161	23.866444	14.948729	2415.86	-2052.98

2.4 Star Slots

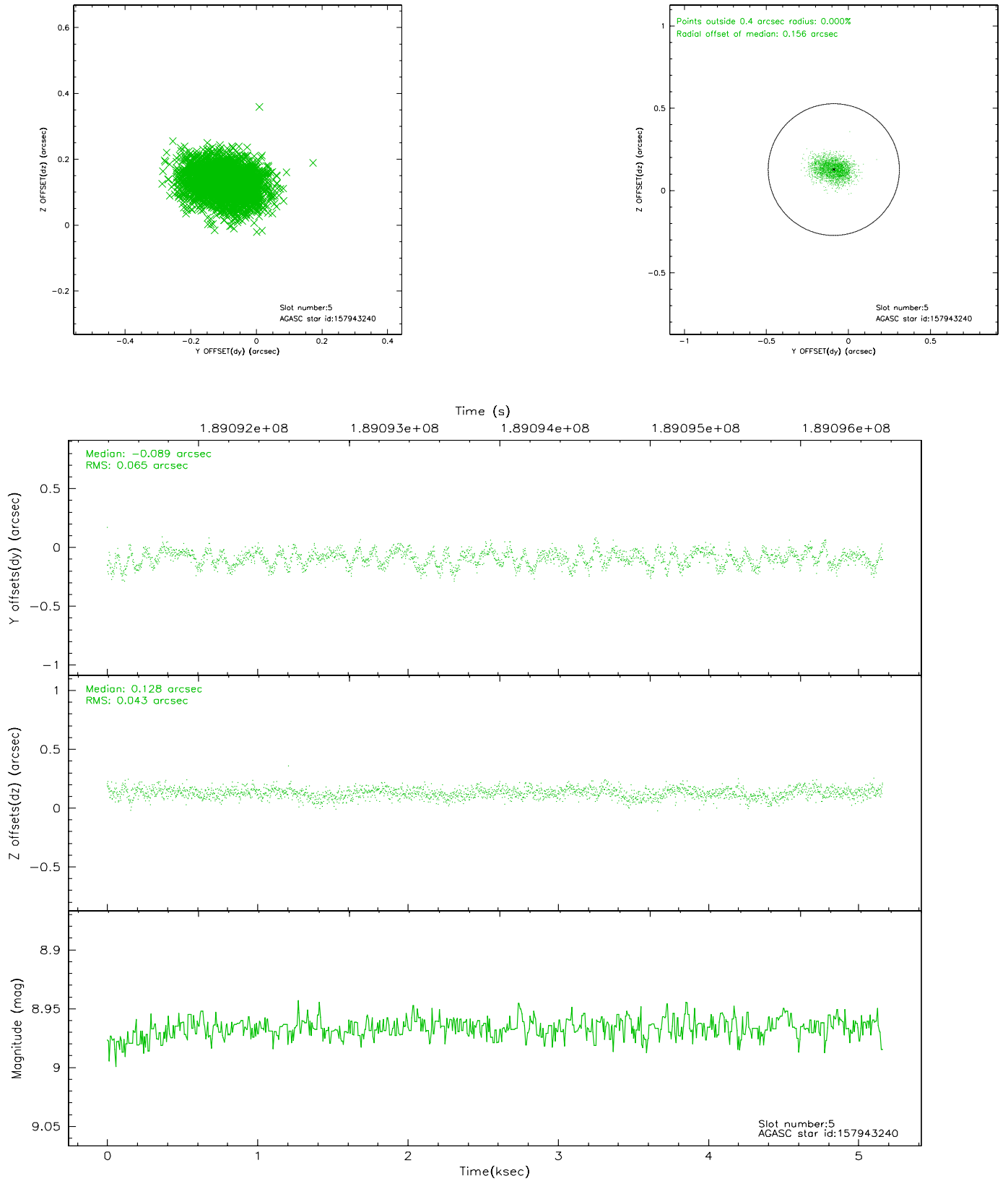
2.4.1 Slot 3



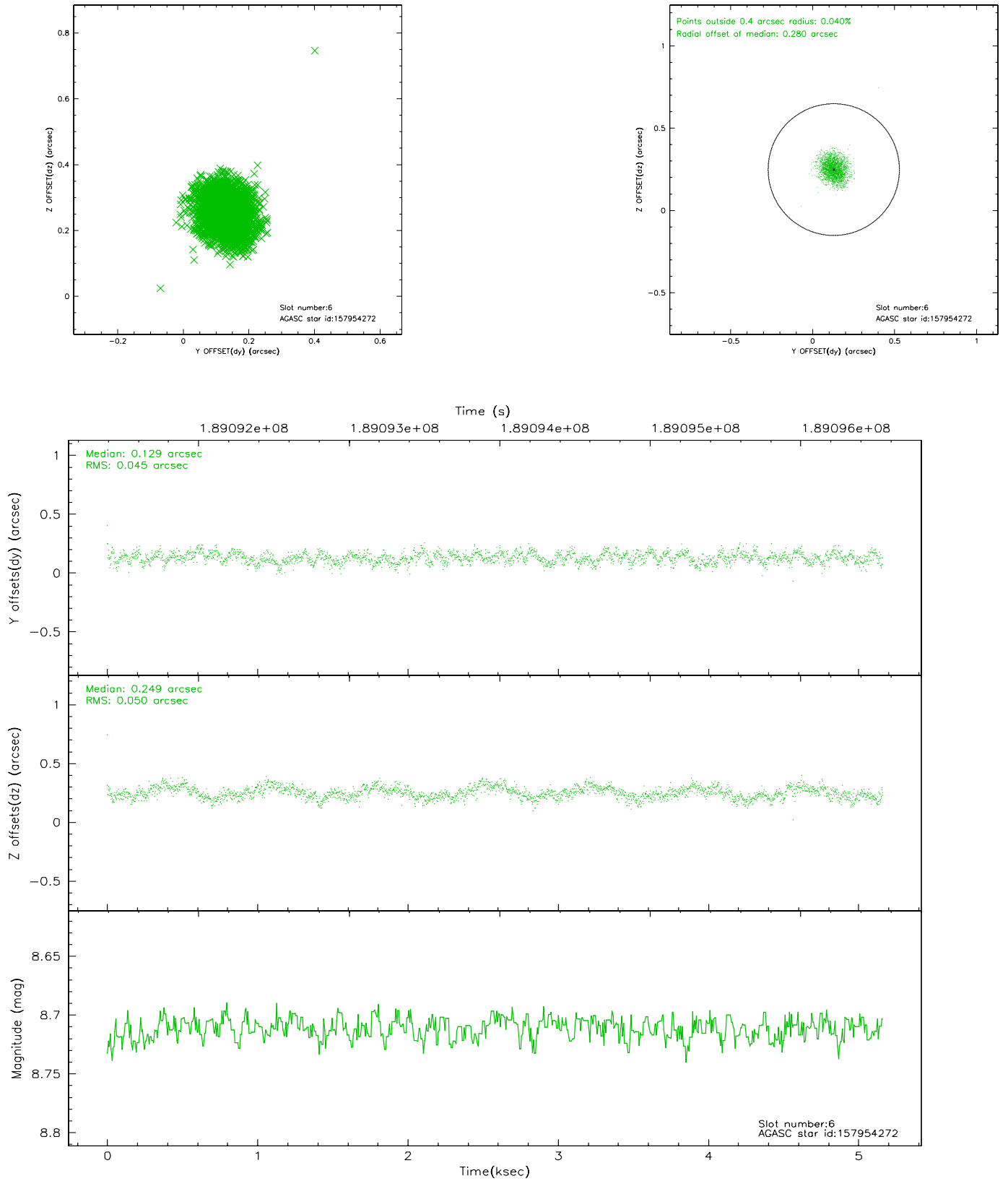
2.4.2 Slot 4



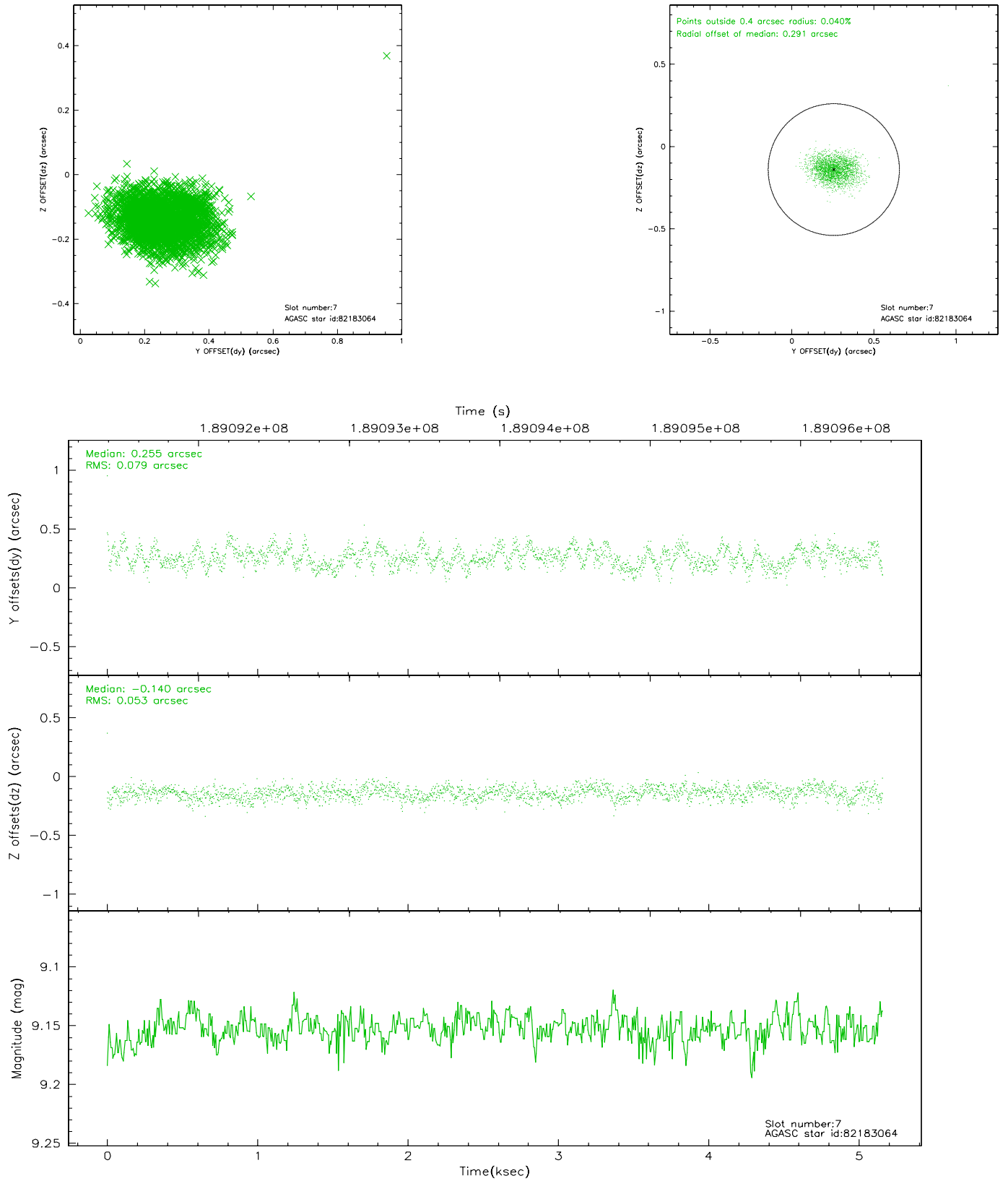
2.4.3 Slot 5



2.4.4 Slot 6

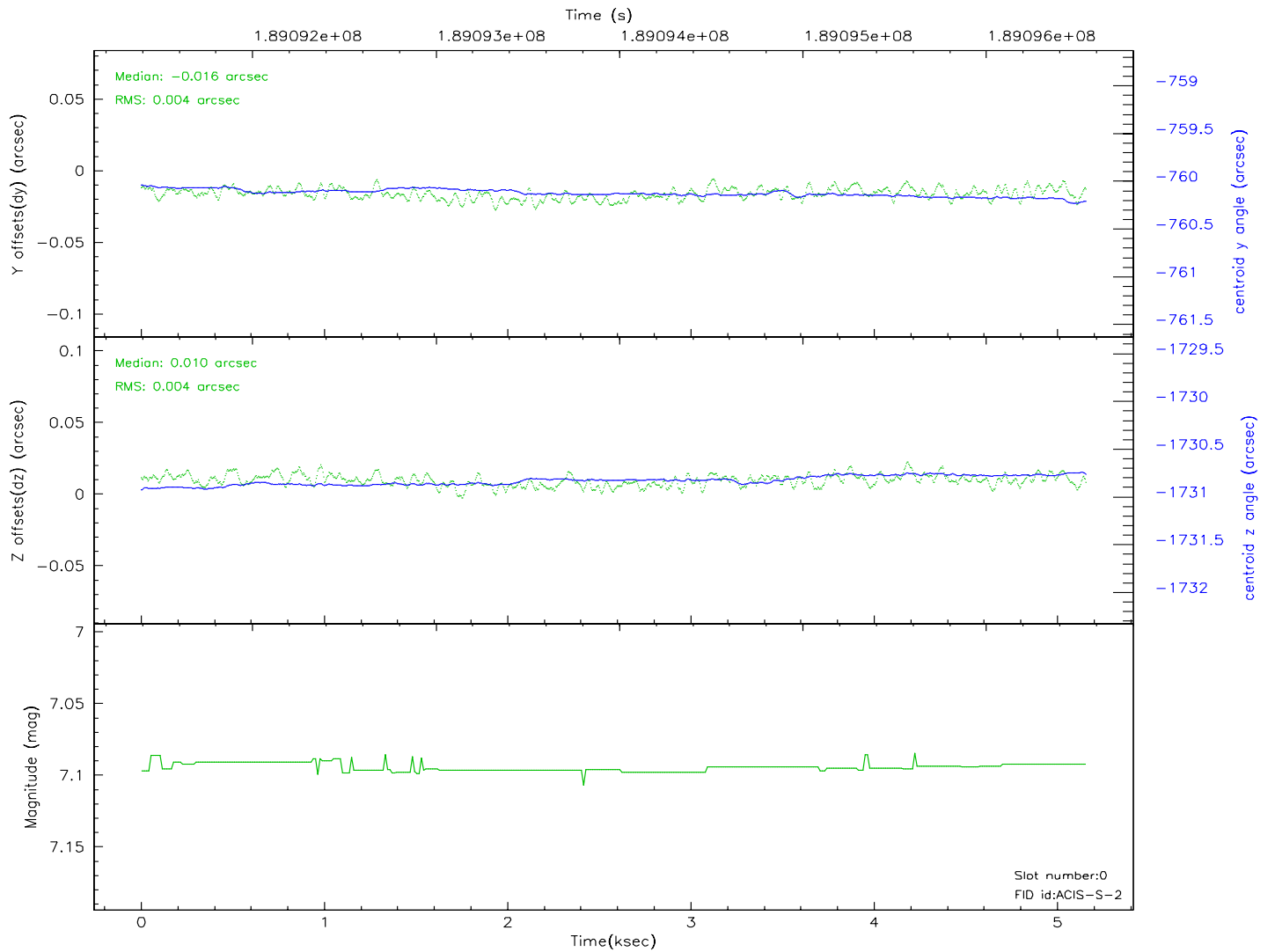
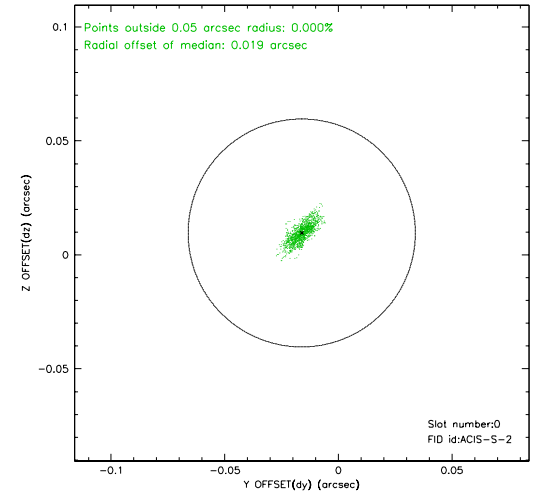
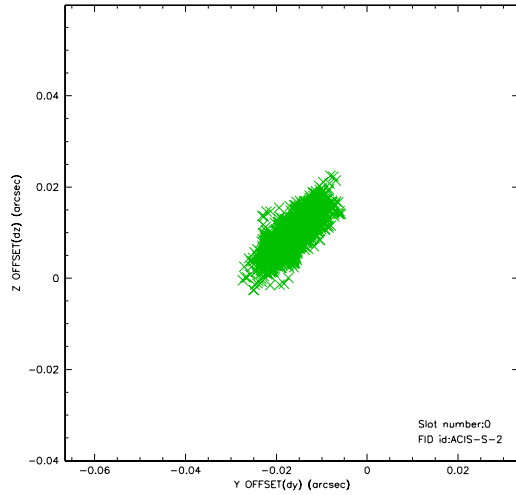


2.4.5 Slot 7

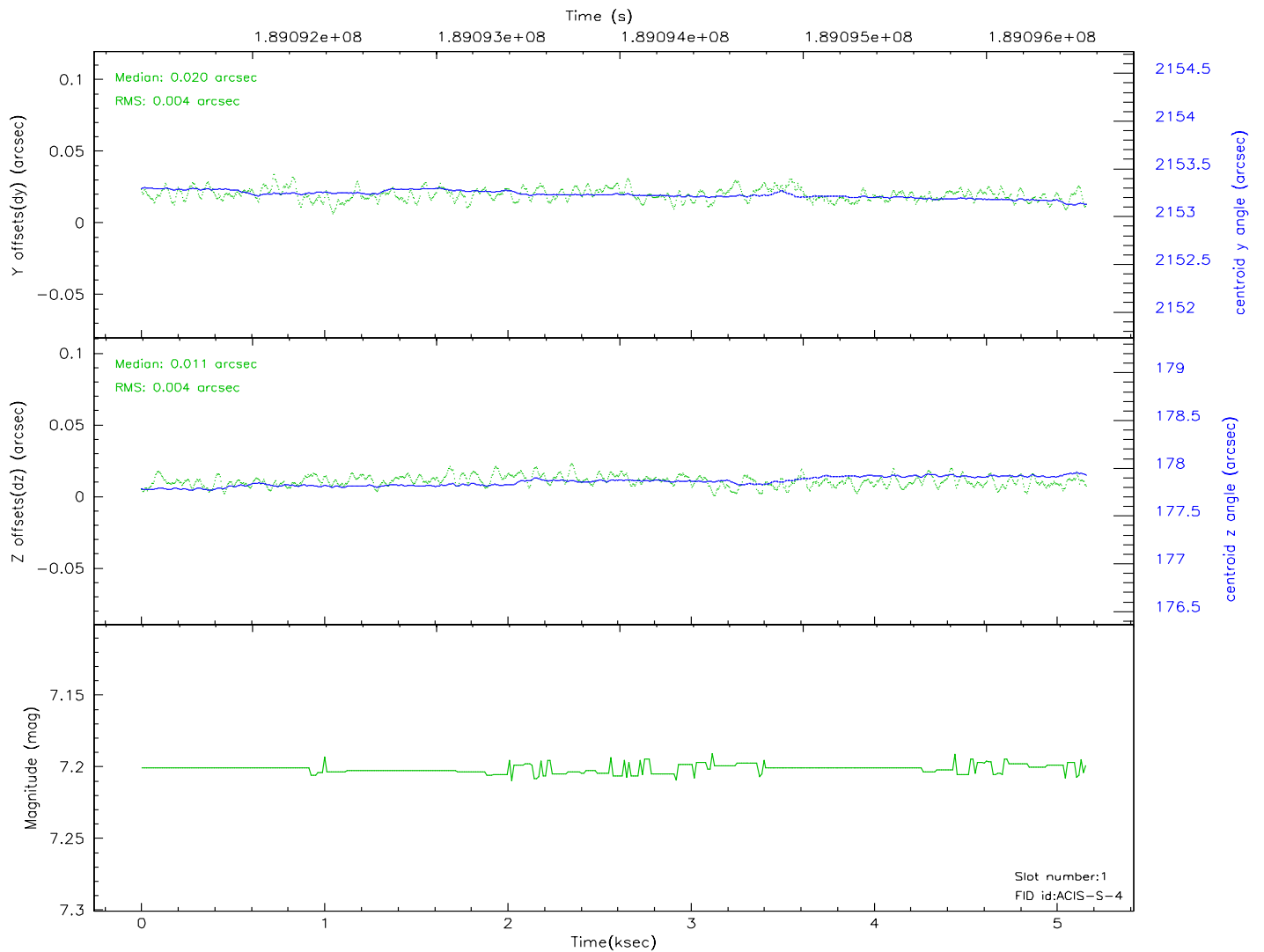
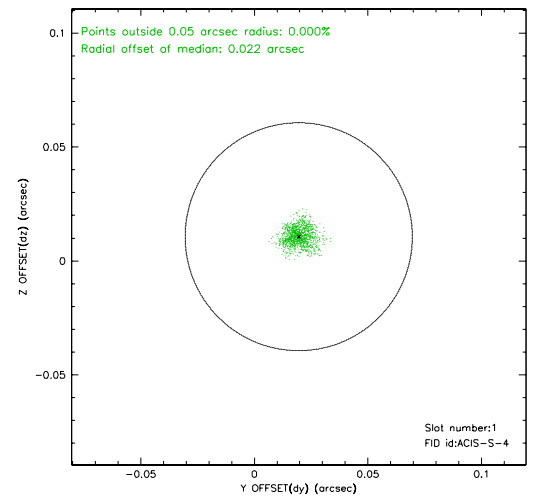
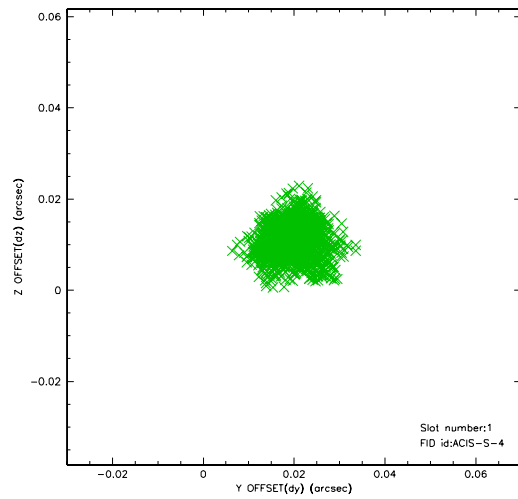


2.5 FID Slots

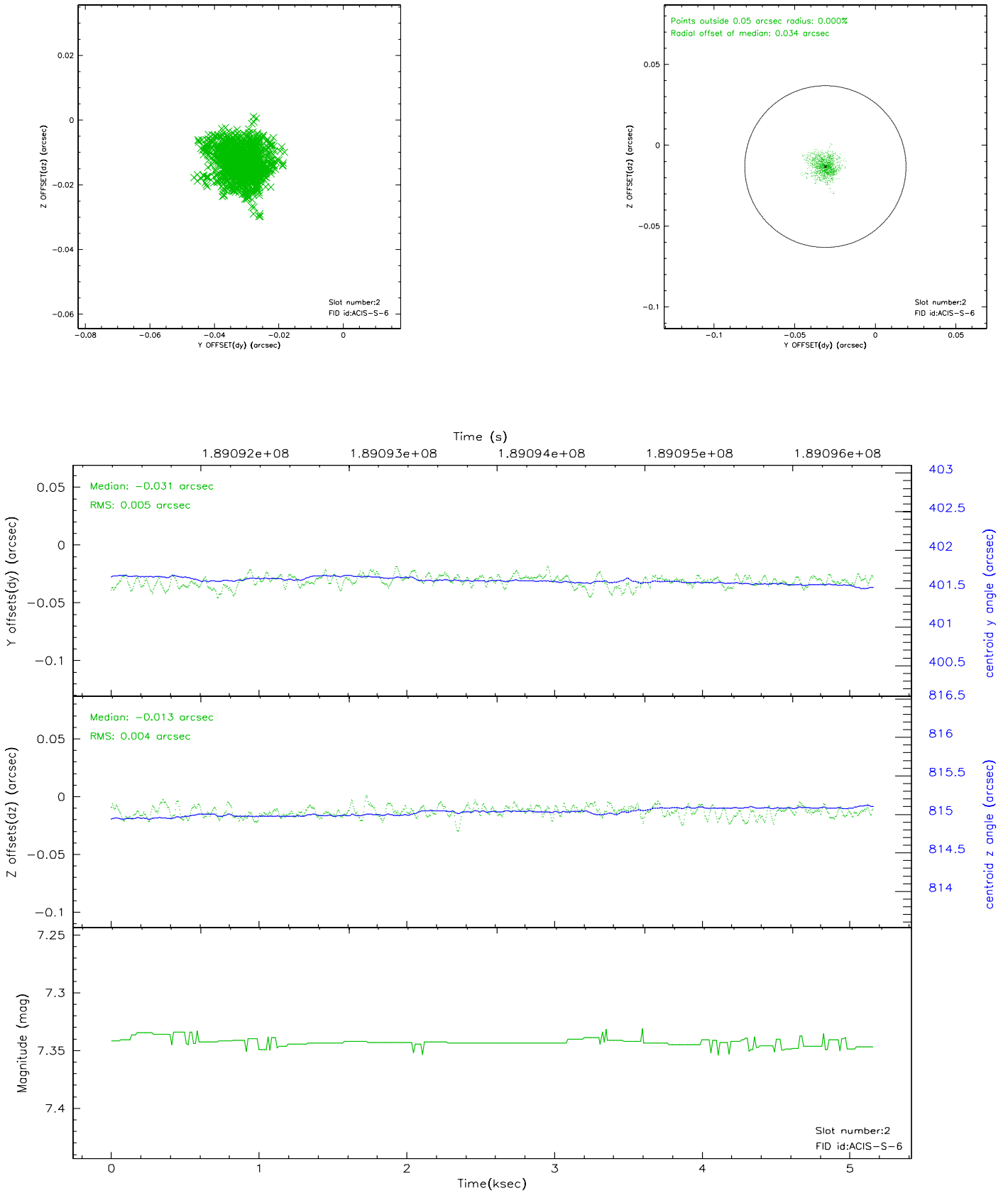
2.5.1 Slot 0



2.5.2 Slot 1



2.5.3 Slot 2



3 Point Sources

18.19 arcmin



A Summary

A.1 Status

V&V Scientist	Jen Lauer
V&V Date (YYYY-MM-DD)	2006.06.22
V&V Edition	1
V&V Disposition and Status	OK
V&V Charge Time	5.158

A.2 Comments

On day 356 at about 00:30, the OBA heater stuck in the 'on' position. This situation affected obsid 4901 and all subsequent observations to this point. The result of this anomaly could be a displacement of the target on the chip in the z direction. The displacement will be small because everything is still within spec, but the target may be spatially displaced, have a different point spread function, or trail across the chip.