

# V&V Reference Report

## L2 ASCDS Version : 7.6.7.2

Observation 4745 - L2 Version 001  
Chandra X-Ray Center

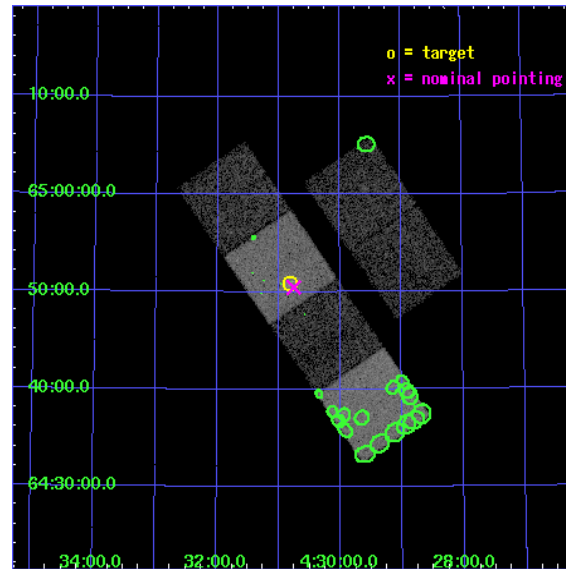
L2 Processing Date : Jun 8 2006

## Contents

<b>1</b>	<b>Front</b>	<b>2</b>
<b>2</b>	<b>OBI</b>	<b>3</b>
2.1	OBI . . . . .	3
2.1.1	Images . . . . .	3
2.1.2	Bias . . . . .	3
2.1.3	Parameters . . . . .	4
2.1.4	Events . . . . .	4
2.2	Compared Parameters . . . . .	5
2.3	Aspect . . . . .	6
2.4	Star Slots . . . . .	9
2.4.1	Slot 3 . . . . .	9
2.4.2	Slot 4 . . . . .	10
2.4.3	Slot 5 . . . . .	11
2.4.4	Slot 6 . . . . .	12
2.4.5	Slot 7 . . . . .	13
2.5	FID Slots . . . . .	14
2.5.1	Slot 0 . . . . .	14
2.5.2	Slot 1 . . . . .	15
2.5.3	Slot 2 . . . . .	16
<b>3</b>	<b>Point Sources</b>	<b>17</b>
<b>A</b>	<b>Summary</b>	<b>18</b>
A.1	Status . . . . .	18
A.2	Comments . . . . .	18

# 1 Front

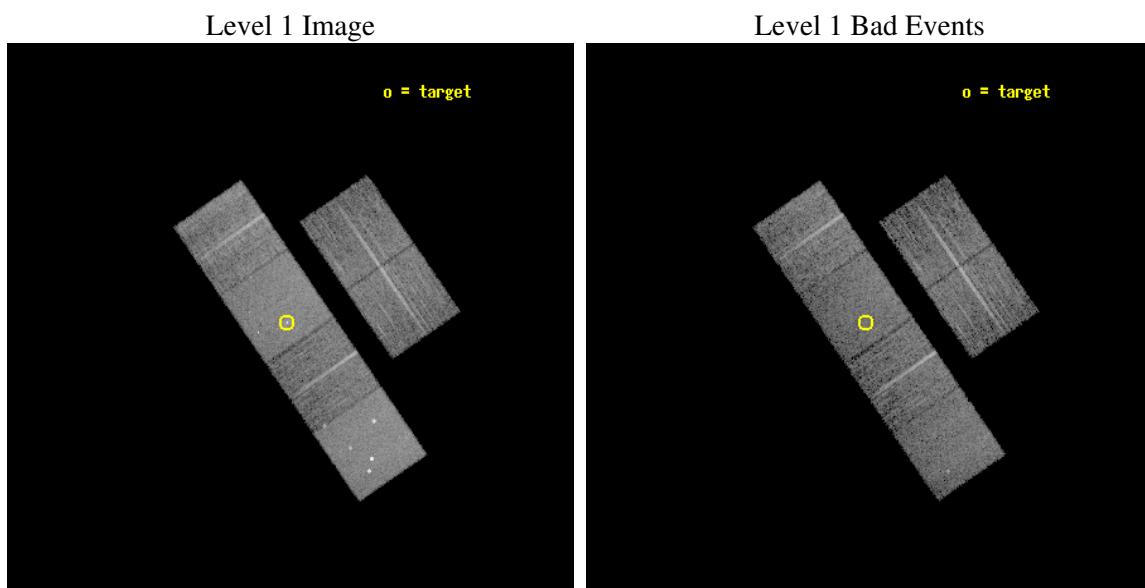
seq_num	600400
obs_id	4745
title	The discrete X-ray source populations in an age sequence of nearby starburst galaxies
observer	Dr. Andreas Zezas
object	NGC1569
dtcycle	0
cycle	P
ra_targ	67.704167
dec_targ	64.848056
ra_nom	67.688335592948
dec_nom	64.841158530888
roll_nom	235.53363789394
revision	2
ontime	10153.599962175
livetime	10025.02896569
ontime2	10153.599962175
ontime3	10153.599962175
ontime5	10153.599962175
ontime6	10153.599962175
ontime7	10153.599962175
ontime8	10153.599962175
l2events	89421



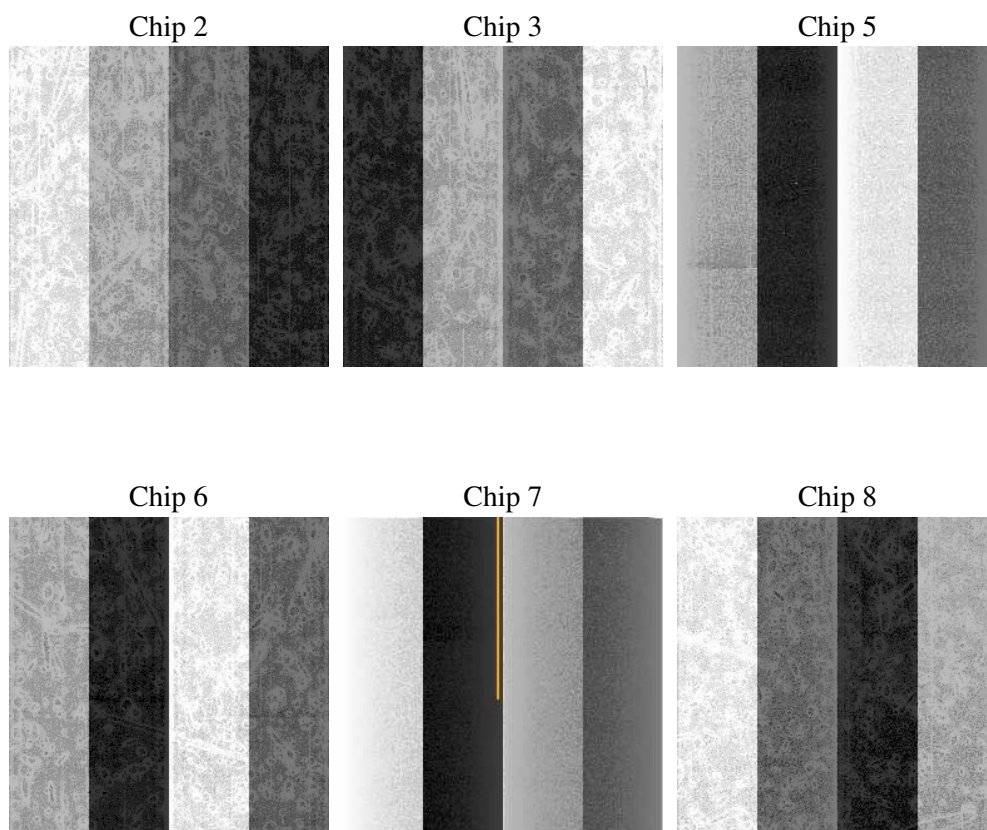
## 2 OBI

### 2.1 OBI

#### 2.1.1 Images



#### 2.1.2 Bias



### 2.1.3 Parameters

obi_num	2
ascdsver	7.6.7.2
caldbver	3.2.2
date	2006-06-08T10:05:55
revision	2

sched_exp_time	10000.000000
ontime	10251.308336645
ontime2	10251.308336645
ontime3	10251.308336645
ontime5	10251.308336645
ontime6	10251.308336645
ontime7	10251.308336645
ontime8	10251.308336645
l1events	410521

### 2.1.4 Events

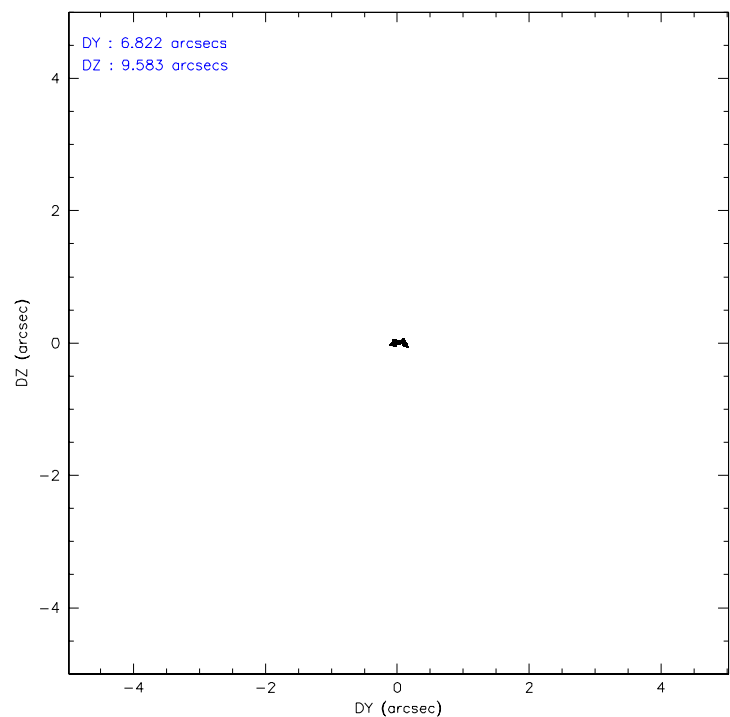
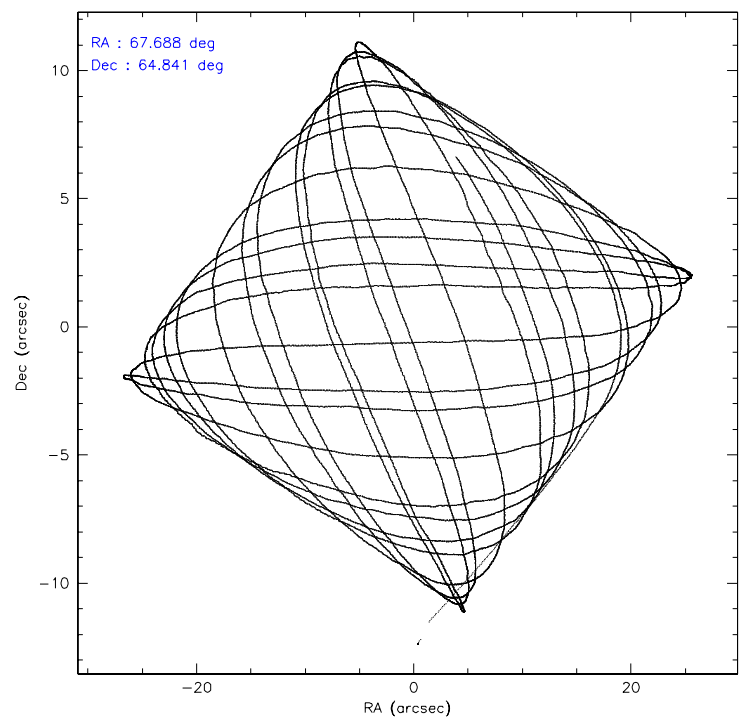
	ccd 2	ccd 3	ccd 5	ccd 6	ccd 7	ccd 8
level 1 events	59199	54518	88977	56236	79228	72363
rejected events	52329	47767	48638	49326	48403	57178
rejected %	88%	87%	54%	87%	61%	79%

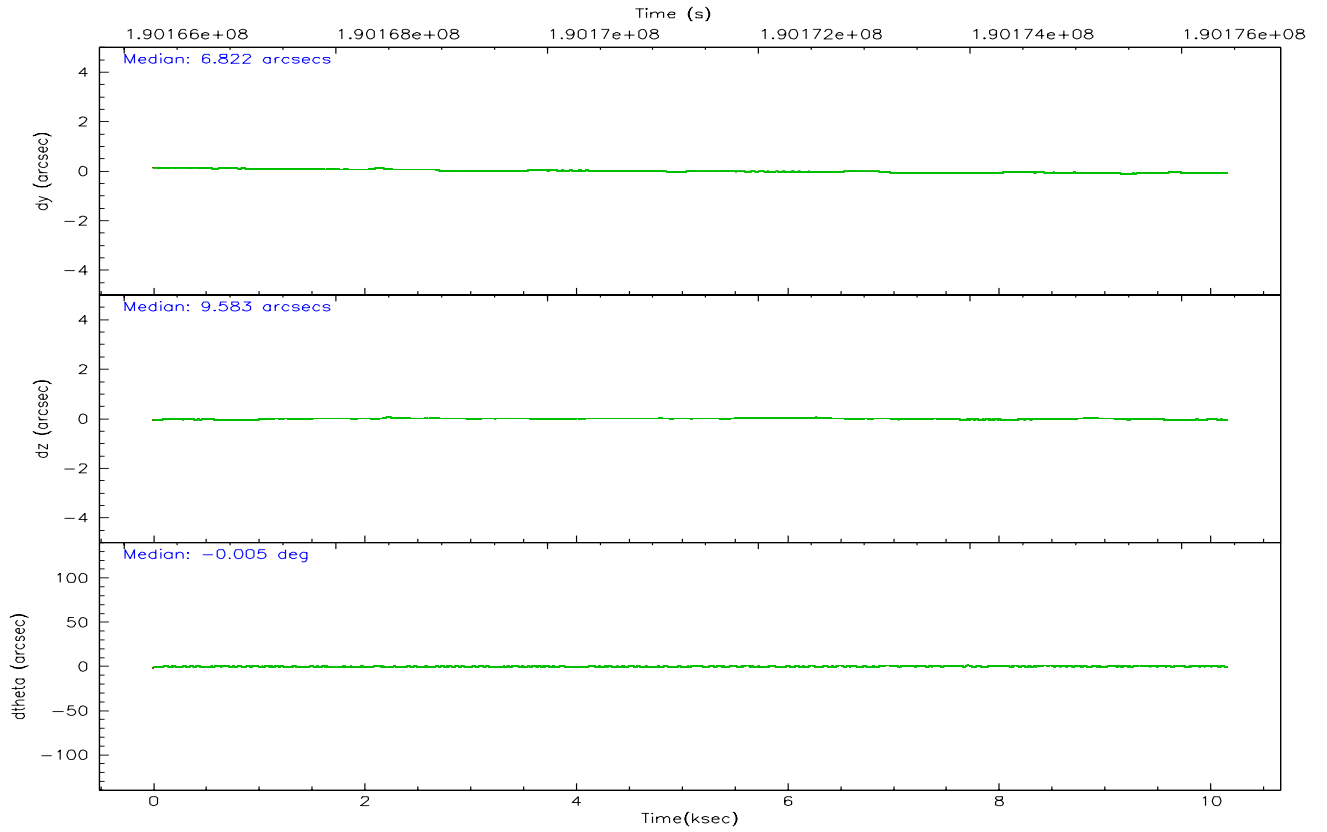
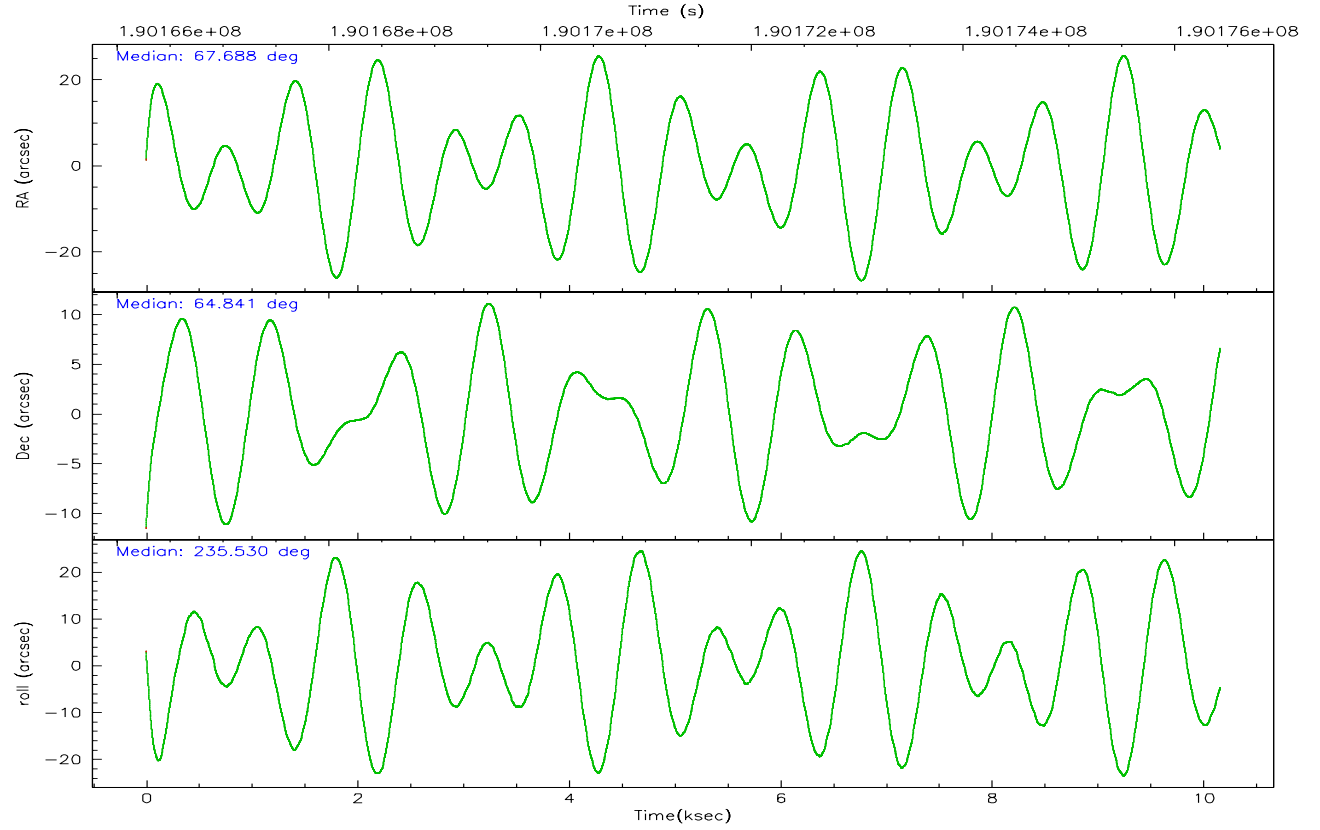
	ccd 2	ccd 3	ccd 5	ccd 6	ccd 7	ccd 8
grade 0 events	2987	2970	6306	2764	2174	5053
	5%	5%	7%	4%	2%	6%
grade 1 events	29	31	192	18	59	45
	0%	0%	0%	0%	0%	0%
grade 2 events	1459	1288	11673	1456	7852	3289
	2%	2%	13%	2%	9%	4%
grade 3 events	663	663	794	658	1607	1601
	1%	1%	0%	1%	2%	2%
grade 4 events	649	634	750	608	1629	1475
	1%	1%	0%	1%	2%	2%
grade 5 events	2285	2484	4017	2693	5126	3570
	3%	4%	4%	4%	6%	4%
grade 6 events	1171	1254	21213	1497	17874	3883
	1%	2%	23%	2%	22%	5%
grade 7 events	49956	45194	44032	46542	42907	53447
	84%	82%	49%	82%	54%	73%

## 2.2 Compared Parameters

Parameter	Planned	Actual	Parameter	Planned	Actual
Instrument	ACIS	ACIS	Obspar format version number	6	6
Detector	ACIS-235678	ACIS-235678	Obspar file type	PREDICTED	ACTUAL
Grating	NONE	NONE	Obspar update status	NONE	UPDATED
Data mode	FAINT	FAINT	On-chip summing requested	N	N
Observation mode	POINTING	POINTING	Subarray requested	NONE	NONE
Pointing RA	67.692337	67.68833559294842	Alternating exposures requested	N	N
Pointing Dec	64.868326	64.84115853088832	Primary exposure time	0.000000	3.2
Pointing Roll	235.373376	235.5336378939364			
SIM focus pos (mm)	-0.684267	-0.6828225247311905			
SIM defocus (mm)	0	0.001444936568705701			
SIM translation stage pos (mm)	-190.132523	-190.1400660498719			
SIM translation stage offset (mm)	0	0.00754346686406393			
Observation start time	190166429.184000	190165326.19801			
Observation start date	2004-01-10T23:59:25	2004-01-10T23:42:06			
Observation end time	190176429.184000	190177131.63602			
Observation end date	2004-01-11T02:46:05	2004-01-11T02:58:51			
Read mode	TIMED	TIMED			

## 2.3 Aspect





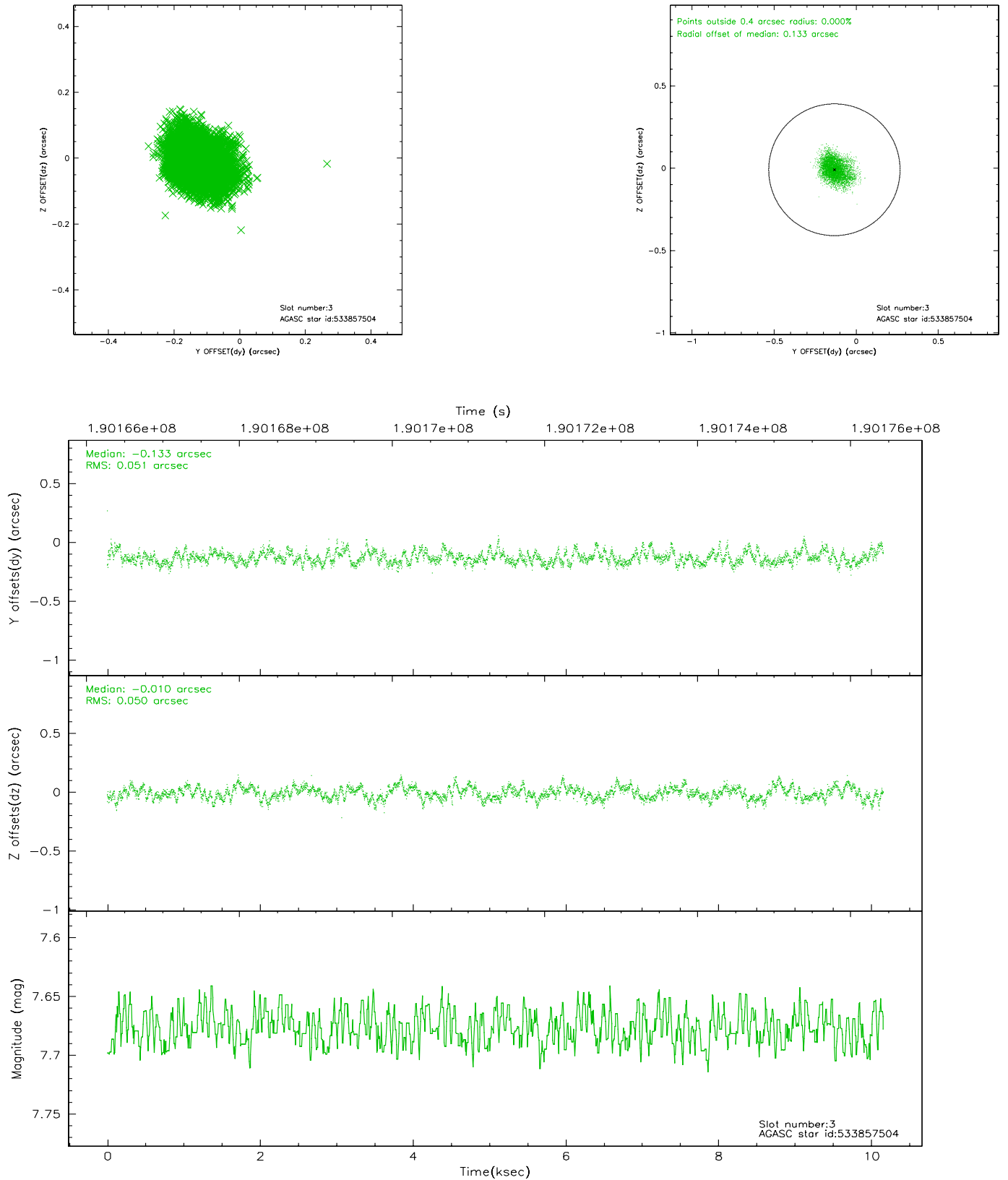
### Slot Statistics

slot	status	id	mag	n_pts	med_dy	med_dz	dr1	dr2	ra	dec	mean_y	mean_z
0	FID	ACIS-S-2	7.09	2479	-0.031	0.007	0.006	0.011	0.000000	0.000000	-759.58	-1730.82
1	FID	ACIS-S-4	7.20	2479	0.021	0.013	0.005	0.009	0.000000	0.000000	2153.49	177.17
2	FID	ACIS-S-5	7.23	2478	-0.020	-0.012	0.006	0.011	0.000000	0.000000	-1811.77	171.35
3	GUIDE	533857504	7.68	4957	-0.133	-0.010	0.075	0.123	68.314378	64.988238	-896.93	531.31
4	GUIDE	533859920	7.95	4958	0.002	-0.009	0.093	0.134	67.647151	65.051129	-502.62	-430.36
5	GUIDE	535573640	8.73	4958	-0.043	-0.007	0.102	0.164	69.527040	64.863934	-1614.57	2294.07
6	GUIDE	533863240	8.95	4952	0.115	0.012	0.204	0.268	67.608757	64.239522	1936.78	1179.24
7	GUIDE	533865560	9.11	4954	0.077	0.003	0.088	0.138	68.062227	64.246964	1511.04	1746.55

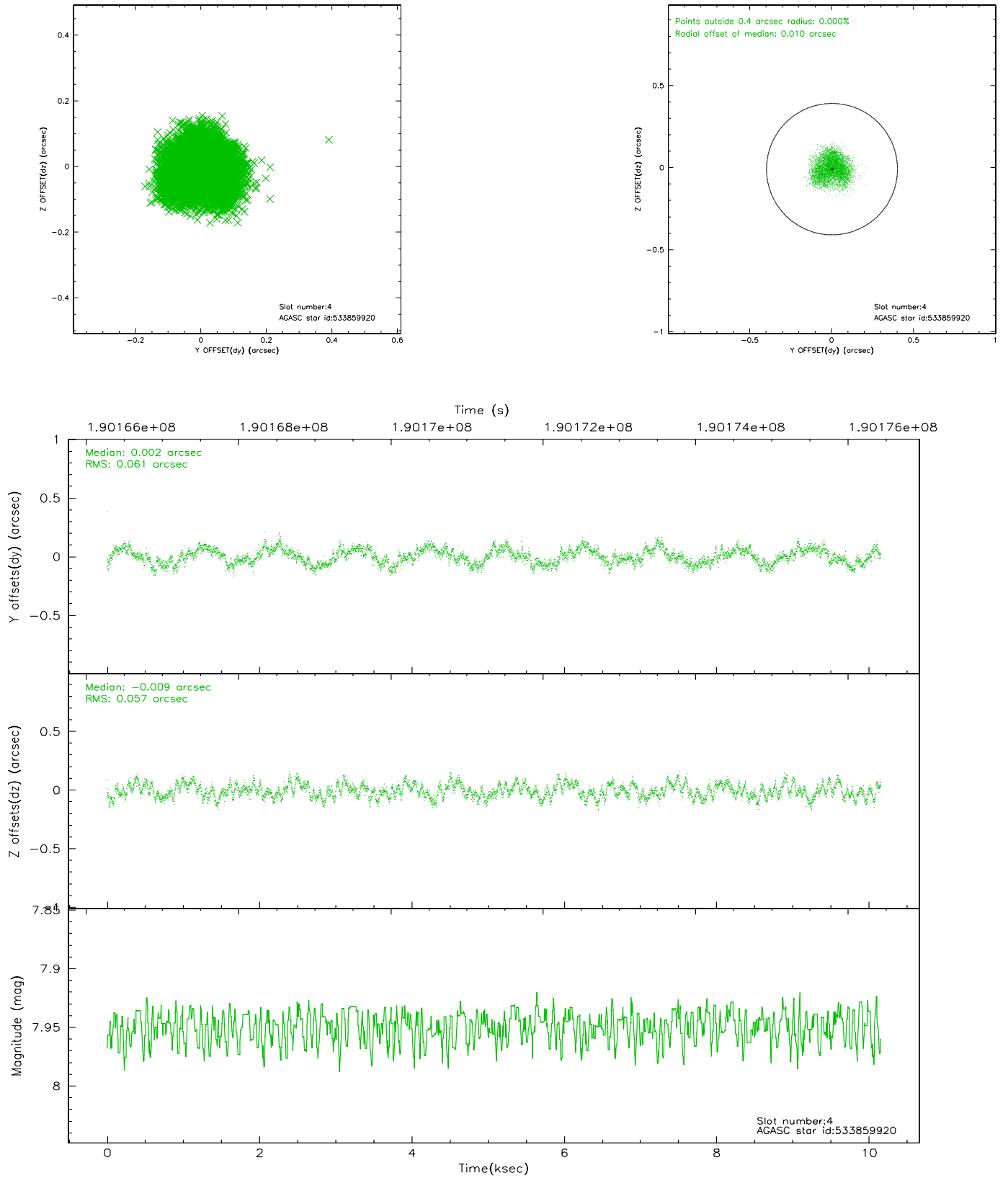


## 2.4 Star Slots

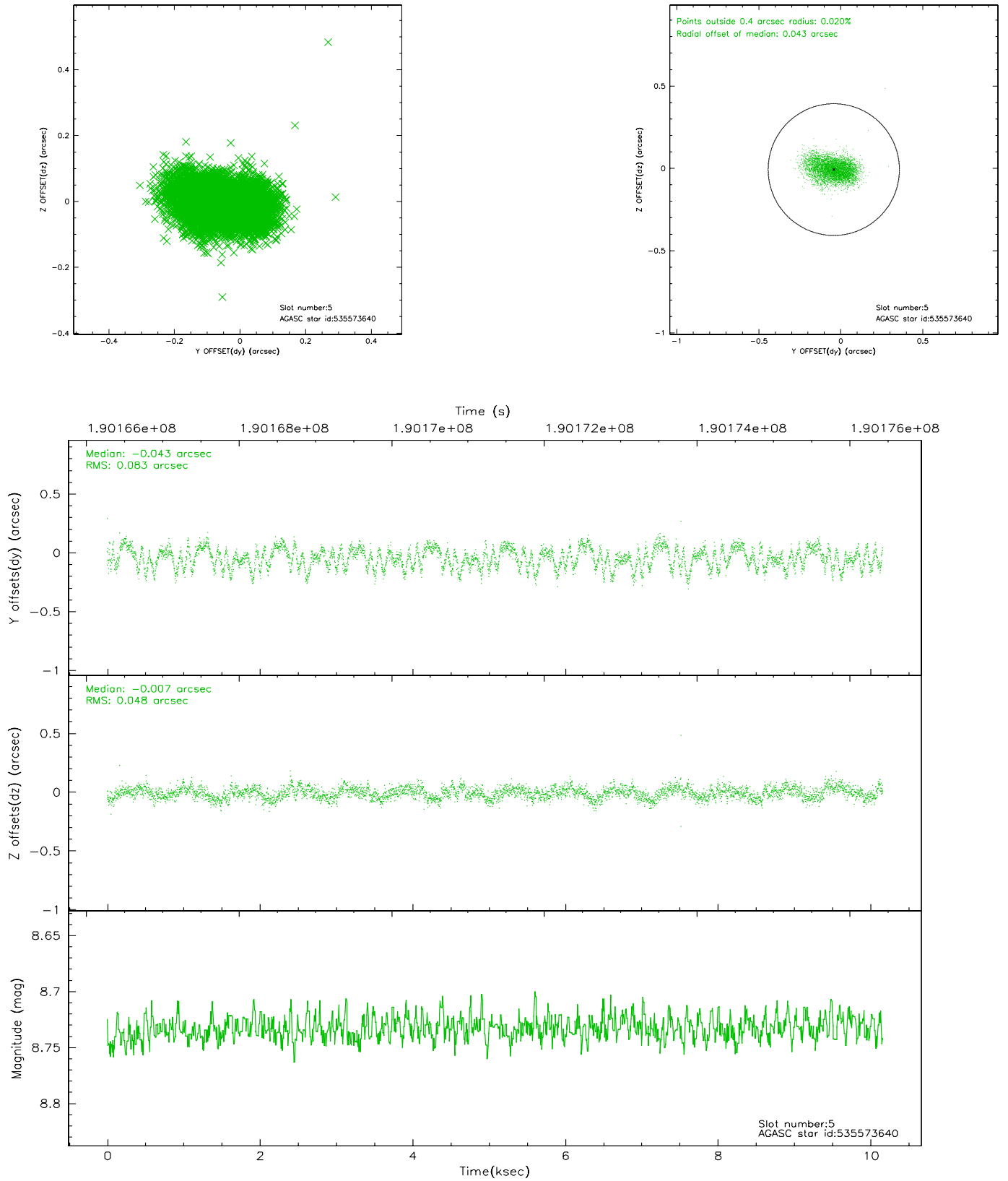
### 2.4.1 Slot 3



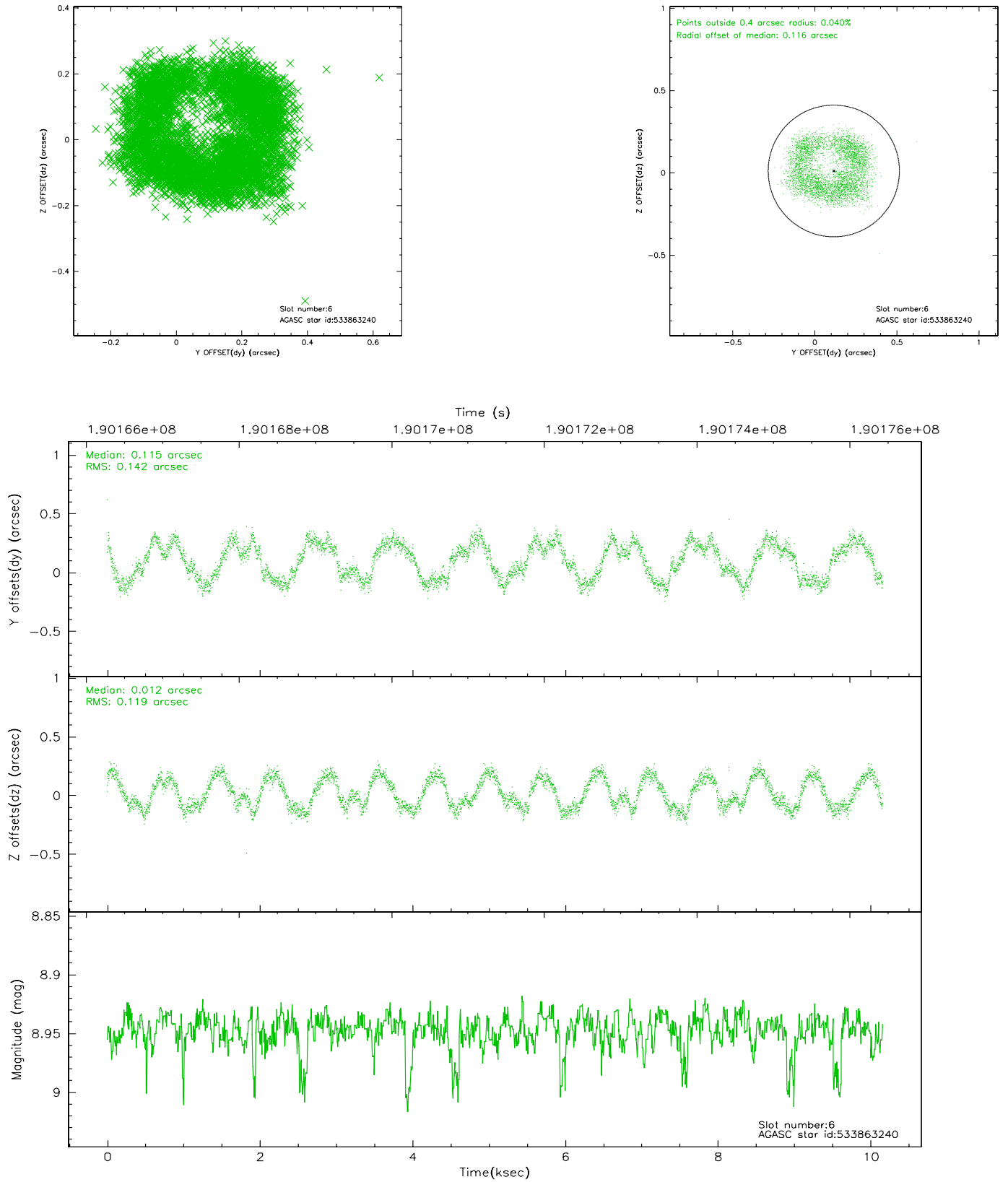
## 2.4.2 Slot 4



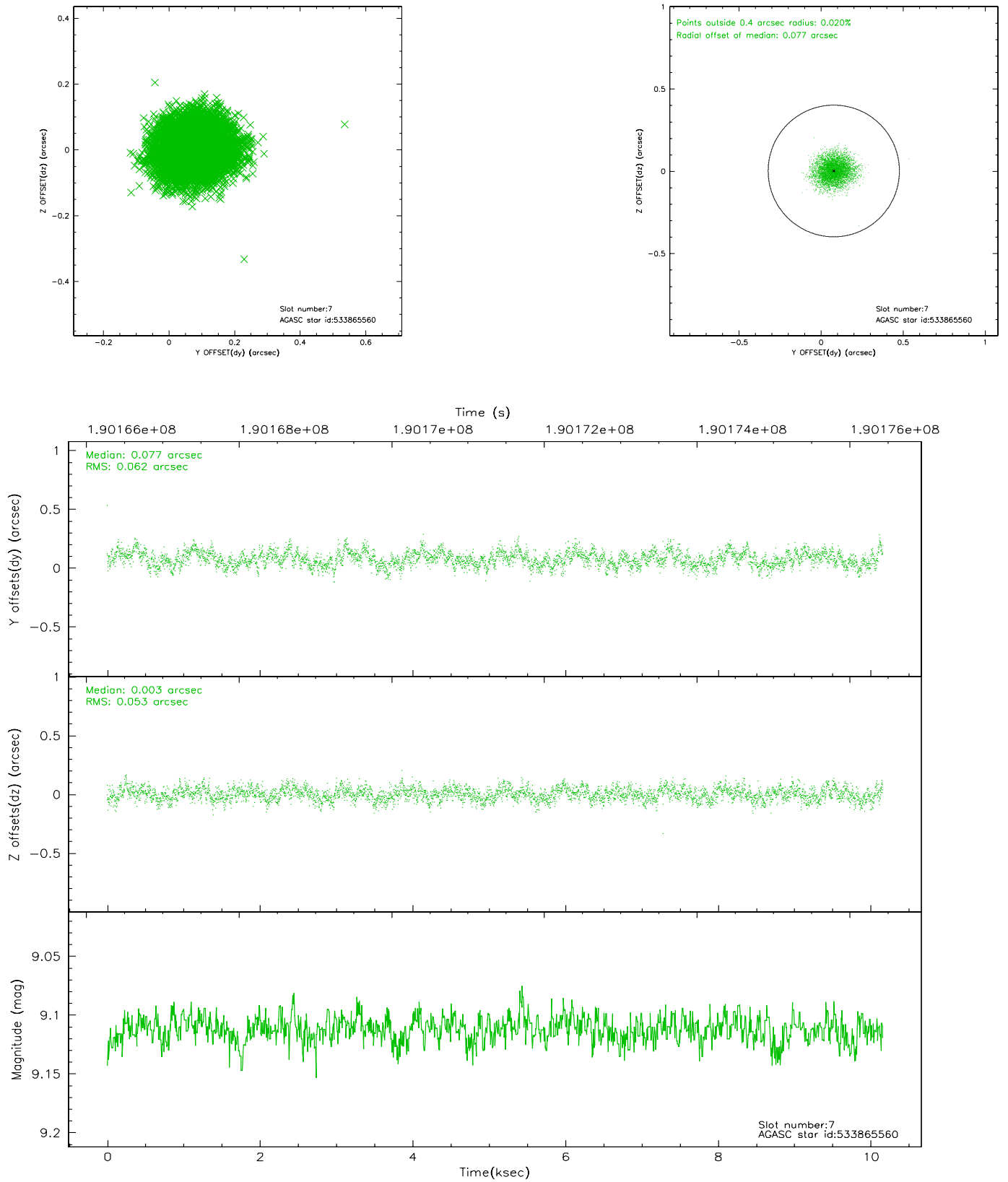
### 2.4.3 Slot 5



## 2.4.4 Slot 6

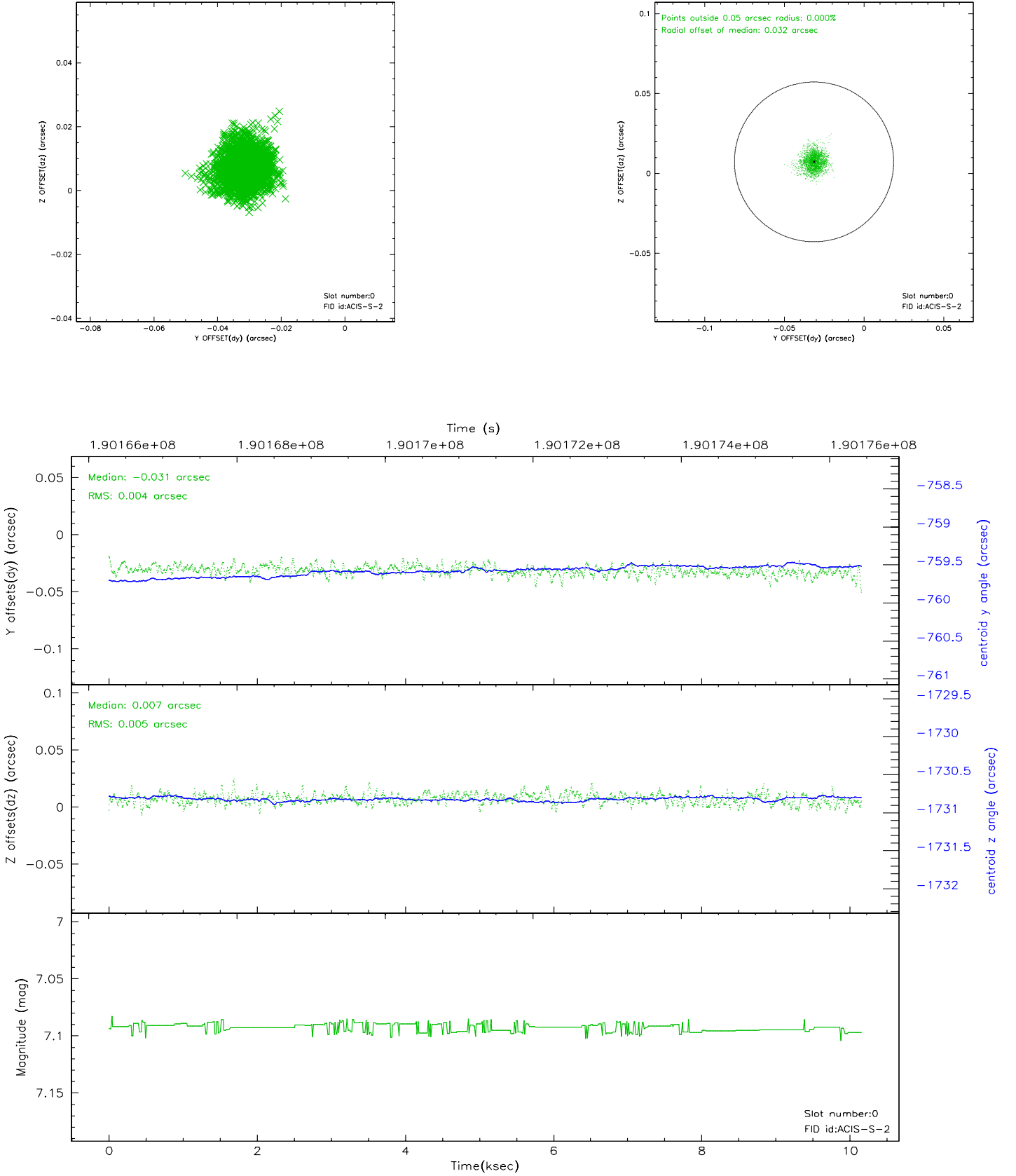


## 2.4.5 Slot 7

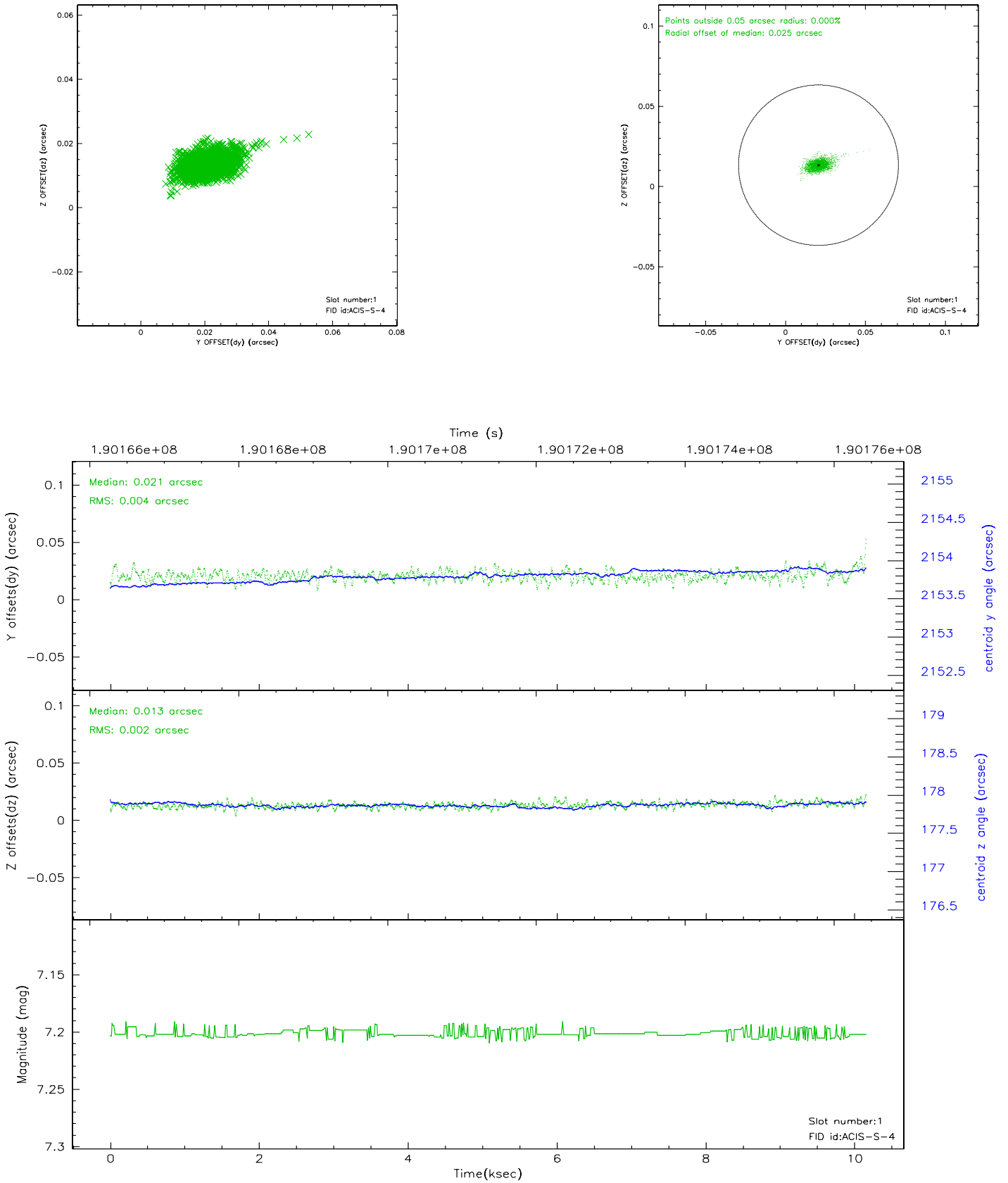


## 2.5 FID Slots

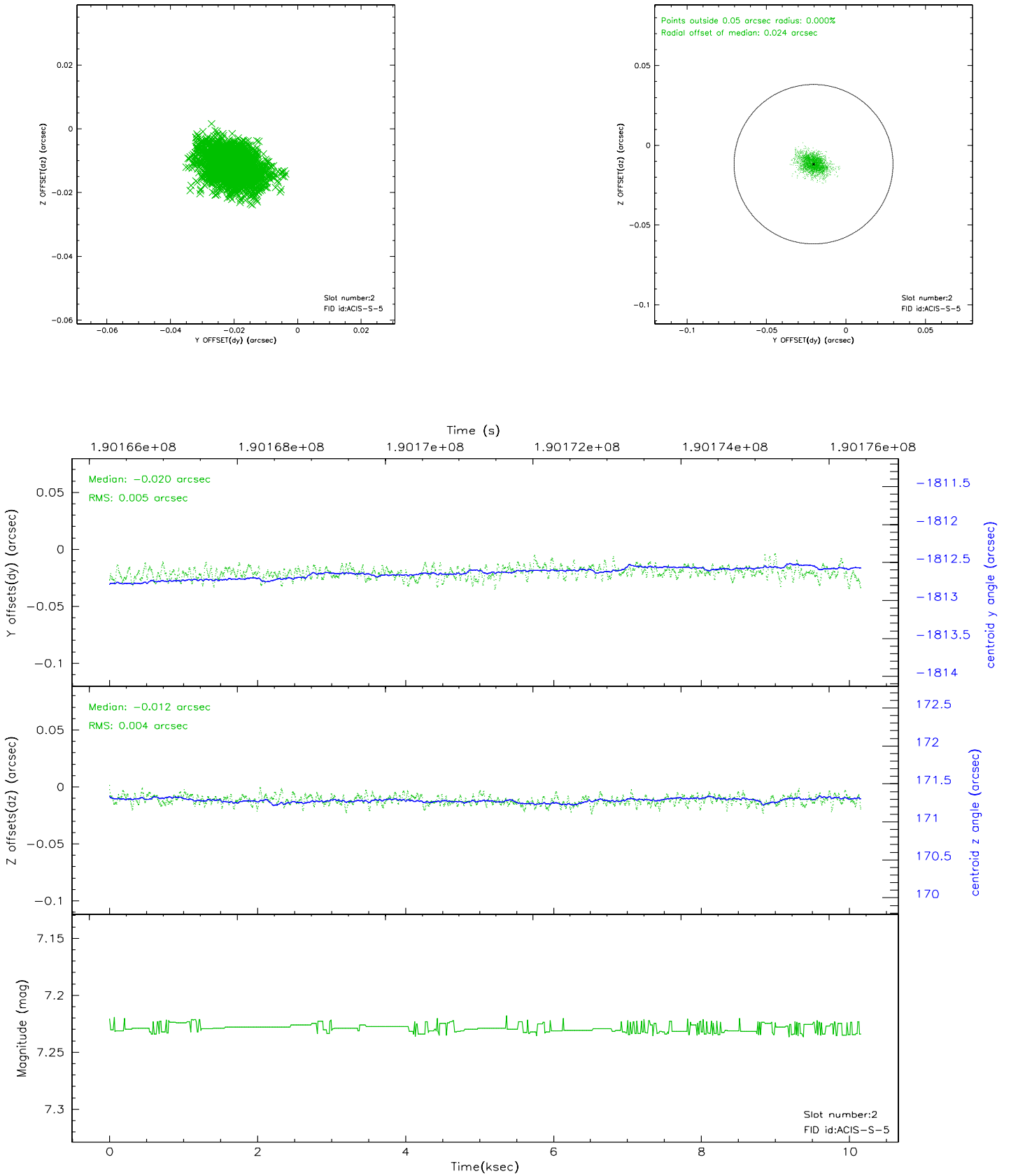
### 2.5.1 Slot 0



## 2.5.2 Slot 1

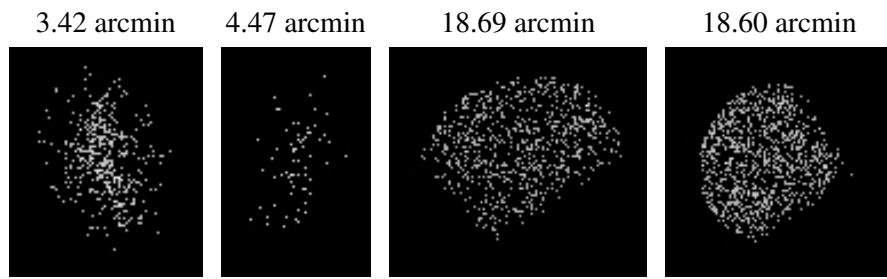


### 2.5.3 Slot 2





### 3 Point Sources



## A Summary

### A.1 Status

V&V Scientist	Beth Sundheim
V&V Date (YYYY-MM-DD)	2006.06.08
V&V Edition	1
V&V Disposition and Status	OK
V&V Charge Time	10.153

### A.2 Comments