

# V&V Reference Report

## L2 ASCDS Version : 8.5

Observation 4713 - L2 Version 3  
Chandra X-Ray Center

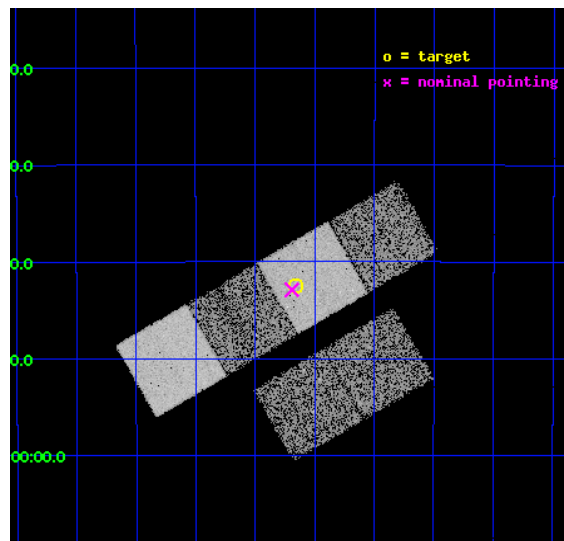
L2 Processing Date : Dec 10 2012

## Contents

<b>1</b>	<b>Front</b>	<b>2</b>
<b>2</b>	<b>OBI</b>	<b>3</b>
2.1	OBI . . . . .	3
2.1.1	Images . . . . .	3
2.1.2	Bias . . . . .	3
2.1.3	Parameters . . . . .	4
2.1.4	Events . . . . .	4
2.2	Compared Parameters . . . . .	5
2.3	Aspect . . . . .	6
2.4	Star Slots . . . . .	9
2.4.1	Slot 3 . . . . .	9
2.4.2	Slot 4 . . . . .	10
2.4.3	Slot 5 . . . . .	11
2.4.4	Slot 6 . . . . .	12
2.4.5	Slot 7 . . . . .	13
2.5	FID Slots . . . . .	14
2.5.1	Slot 0 . . . . .	14
2.5.2	Slot 1 . . . . .	15
2.5.3	Slot 2 . . . . .	16
<b>A</b>	<b>Summary</b>	<b>17</b>
A.1	Status . . . . .	17
A.2	Comments . . . . .	17

# 1 Front

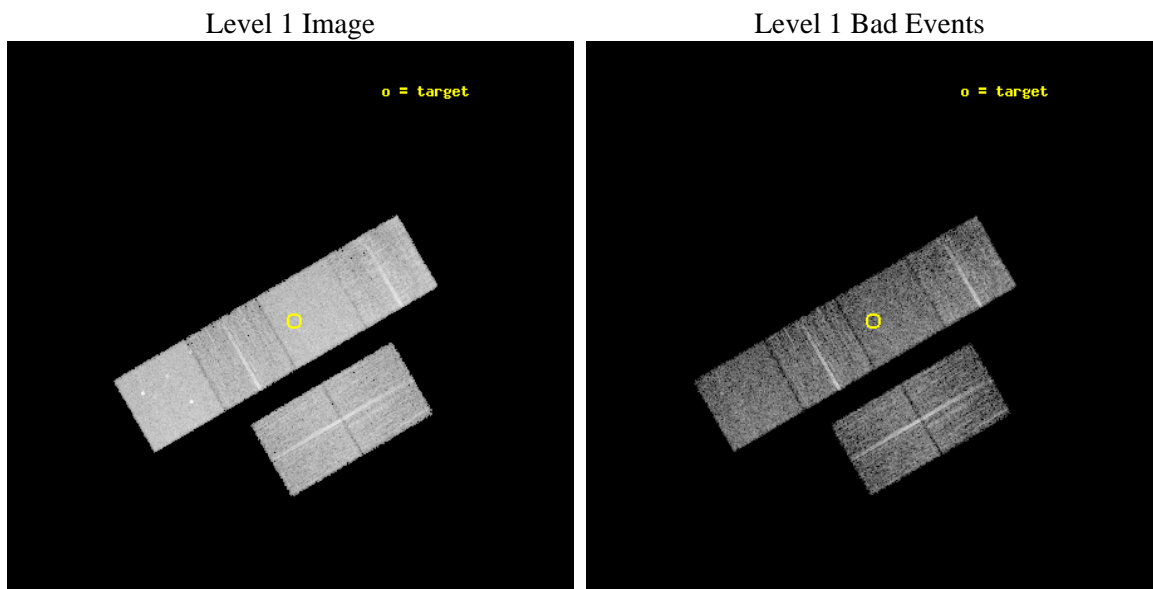
seq_num	600368	Sequence number
obs_id	4713	Observation id
title	Using the Sculptor Dwarf Spheroidal Galaxy to Constrain X-ray Binary Production in Population II	Proposal title
observer	Dr Thomas Maccarone	Principal investigator
object	SCULPTOR DWARF SPHEROIDAL	Source name
dtcycle	0	&#160
cycle	P	events from which exps? Prim/Second/Both
ra_targ	15.039167	Observer's specified target RA [deg]
dec_targ	-33.708889	Observer's specified target Dec [deg]
ra_nom	15.048053414945	Nominal RA [deg]
dec_nom	-33.715150337733	Nominal Dec [deg]
roll_nom	329.87005068593	Nominal Roll [deg]
revision	3	Processing version of data
ontime	6150.399977088	Sum of GTIs [s]
livetime	6072.5199092518	Livetime [s]
ontime2	6143.9180465341	Sum of GTIs [s]
ontime3	6143.9180166125	Sum of GTIs [s]
ontime5	6150.399977088	Sum of GTIs [s]
ontime6	6150.399977088	Sum of GTIs [s]
ontime7	6150.399977088	Sum of GTIs [s]
ontime8	6147.1591263711	Sum of GTIs [s]
l2events	77708	Number of level 2 events



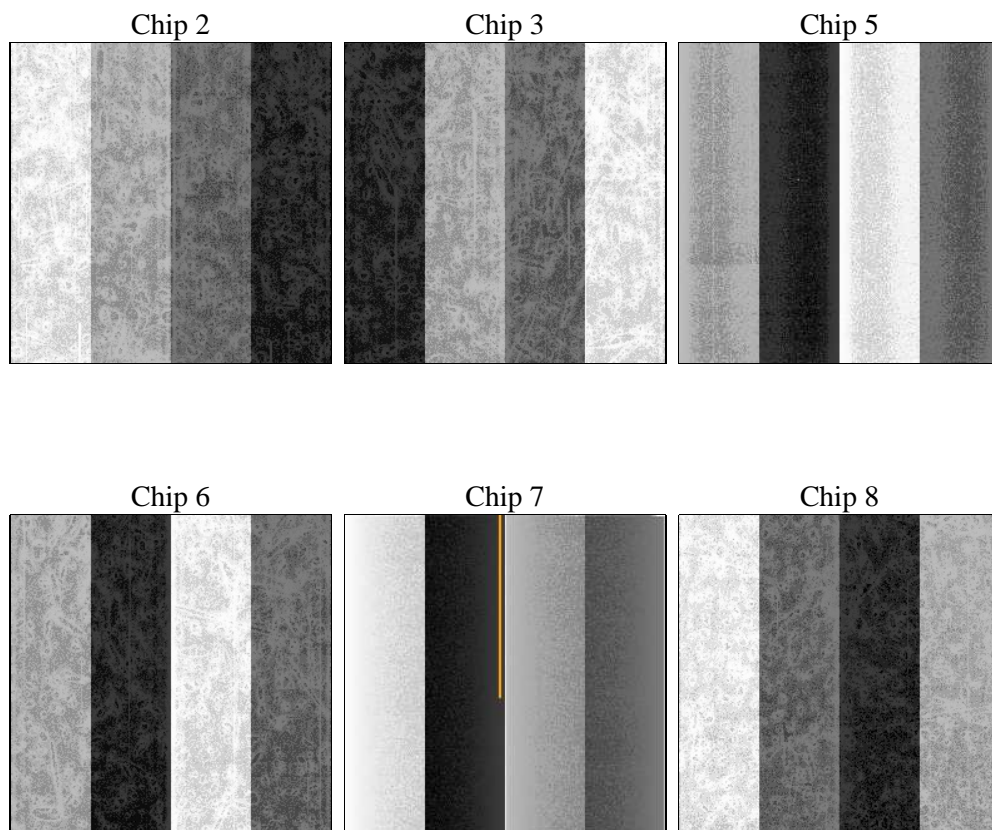
## 2 OBI

### 2.1 OBI

#### 2.1.1 Images



#### 2.1.2 Bias



### 2.1.3 Parameters

obi_num	0	Obi number	sched_exp_time	6000.000000	[s] Scheduled observation exposure time
ascdsver	8.5	Processing system revision	ontime	6150.399977088	Sum of GTIs [s]
caldsver	4.5.4	&#160	ontime2	6143.9180465341	Sum of GTIs [s]
date	2012-12-11T00:30:36	Date and time of file creation	ontime3	6143.9180166125	Sum of GTIs [s]
revision	3	Processing version of data	ontime5	6150.399977088	Sum of GTIs [s]
			ontime6	6150.399977088	Sum of GTIs [s]
			ontime7	6150.399977088	Sum of GTIs [s]
			ontime8	6147.1591263711	Sum of GTIs [s]
			l1events	343332	Number of level 1 events

### 2.1.4 Events

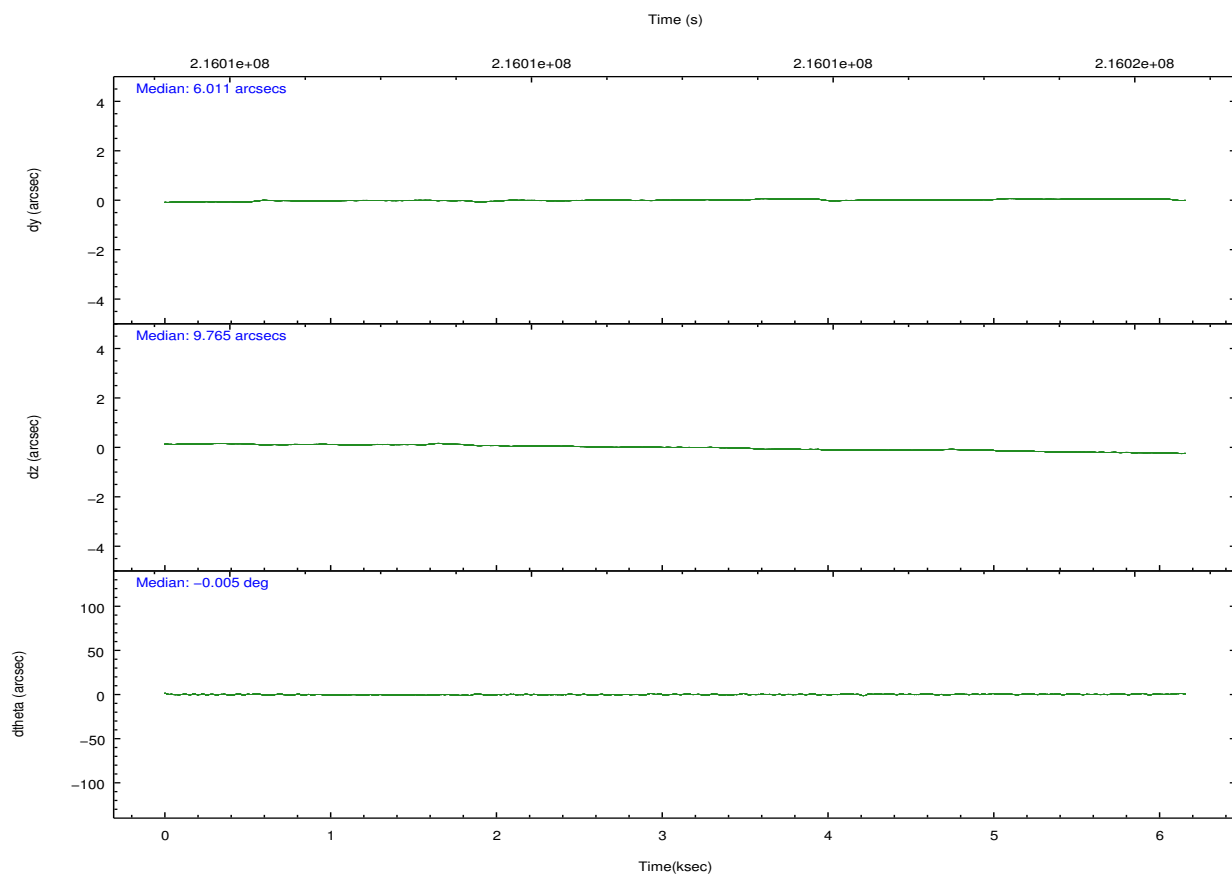
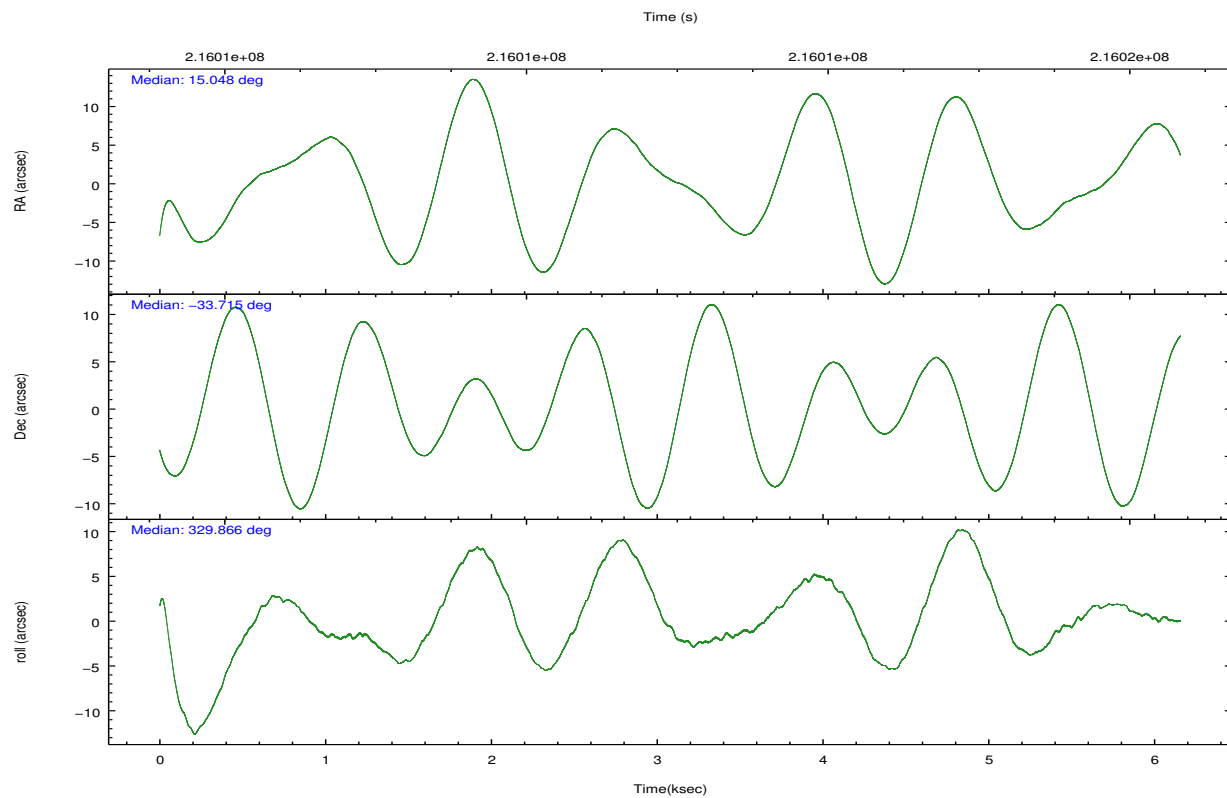
	ccd 2	ccd 3	ccd 5	ccd 6	ccd 7	ccd 8		ccd 2	ccd 3	ccd 5	ccd 6	ccd 7	ccd 8
level 1 events	49594	46253	71363	49496	65307	61319	grade 0 events	2676	2420	3606	2314	2439	4087
rejected events	43663	40756	38341	43702	38247	48328		5%	5%	5%	4%	3%	6%
rejected %	88%	88%	53%	88%	58%	78%	grade 1 events	40	26	132	25	71	34
								0%	0%	0%	0%	0%	0%
							grade 2 events	1216	1039	9726	1263	5453	2801
								2%	2%	13%	2%	8%	4%
							grade 3 events	537	536	1305	555	2385	1426
								1%	1%	1%	1%	3%	2%
							grade 4 events	565	555	1296	526	2396	1346
								1%	1%	1%	1%	3%	2%
							grade 5 events	1847	2104	5370	2249	6195	2885
								3%	4%	7%	4%	9%	4%
							grade 6 events	949	955	17155	1150	14441	3346
								1%	2%	24%	2%	22%	5%
							grade 7 events	41764	38618	32773	41414	31927	45394
								84%	83%	45%	83%	48%	74%



## 2.2 Compared Parameters

Parameter	Planned	Actual	Parameter	Planned	Actual
Instrument	ACIS	ACIS	Obspar format version number	7	7
Detector	ACIS-235678	ACIS-235678	Obspar file type	PREDICTED	ACTUAL
Grating	NONE	NONE	Obspar update status	NONE	UPDATED
Data mode	VFAINT	VFAINT	Number of optional ACIS chips dropped	0	0
Observation mode	POINTING	POINTING	On-chip summing requested	N	N
[deg] Pointing RA	15.015302	15.04805341494472	Subarray requested	NONE	NONE
[deg] Pointing Dec	-33.715443	-33.71515033773323	Alternating exposures requested	N	N
[deg] Pointing Roll	329.695213	329.8700506859276	[s] Primary exposure time	0.000000	3.2
[mm] SIM focus pos	-0.684267	-0.6828225247311905			
[mm] SIM defocus	0	0.001444936568705701			
[mm] SIM translation stage pos	-190.132523	-190.1400660498719			
[mm] SIM translation stage offset	0	0.00754346686406393			
[s] Observation start time (MET)	216010028.184000	216008968.04101			
Observation start date	2004-11-05T02:46:04	2004-11-05T02:29:28			
[s] Observation end time (MET)	216016028.184000	216016720.62886			
Observation end date	2004-11-05T04:26:04	2004-11-05T04:38:40			
Read mode	TIMED	TIMED			

## 2.3 Aspect

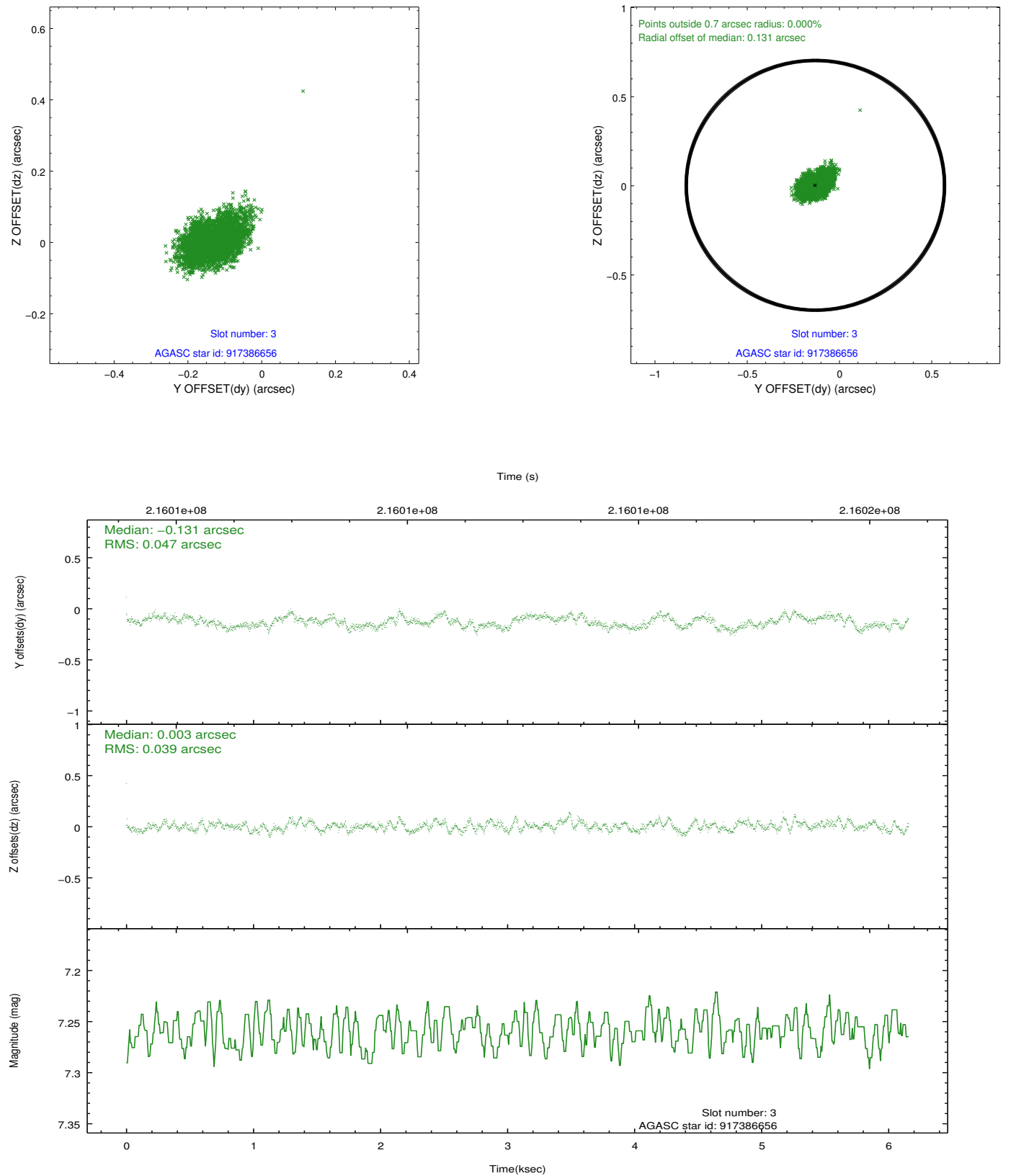


### Slot Statistics

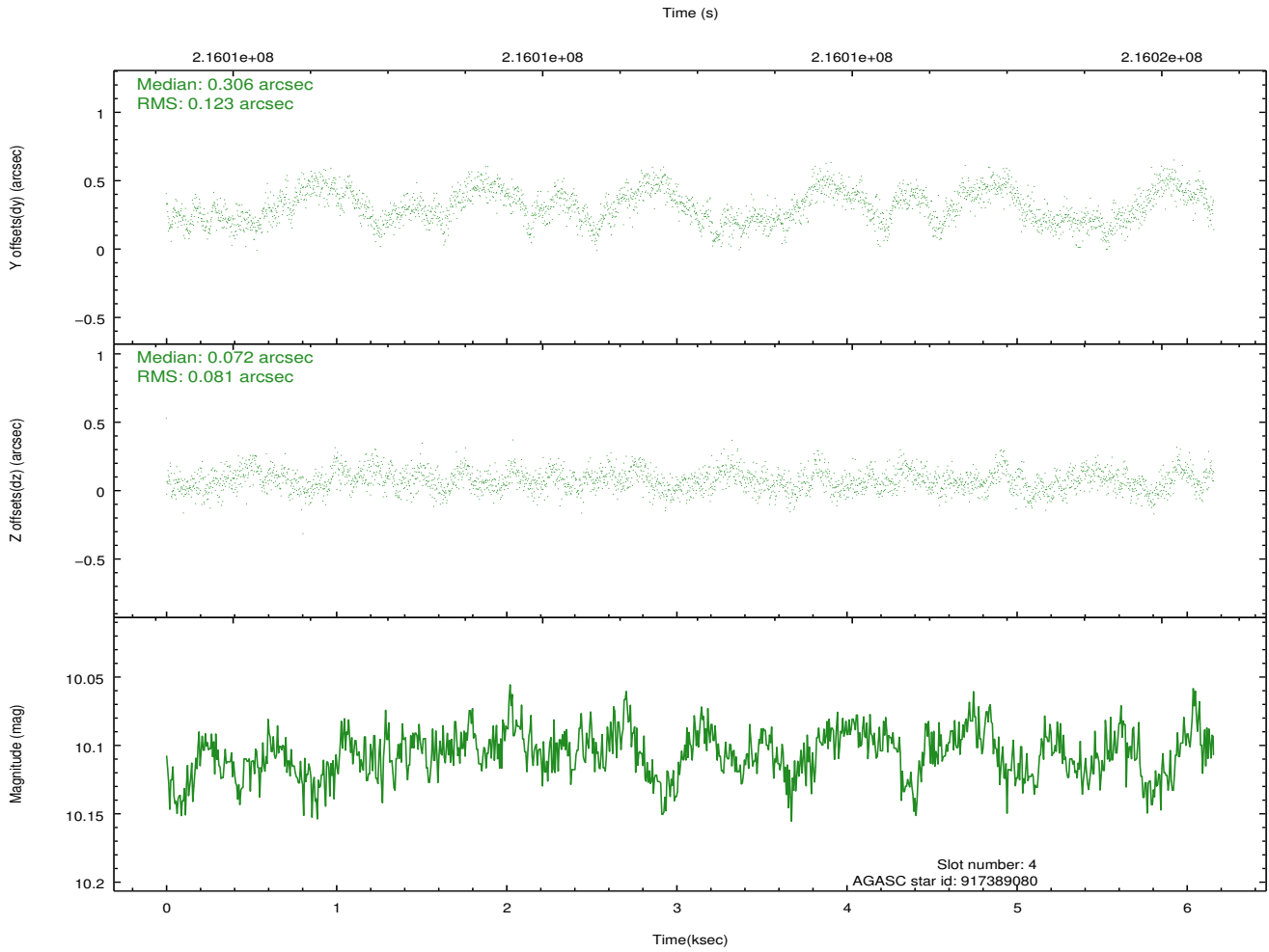
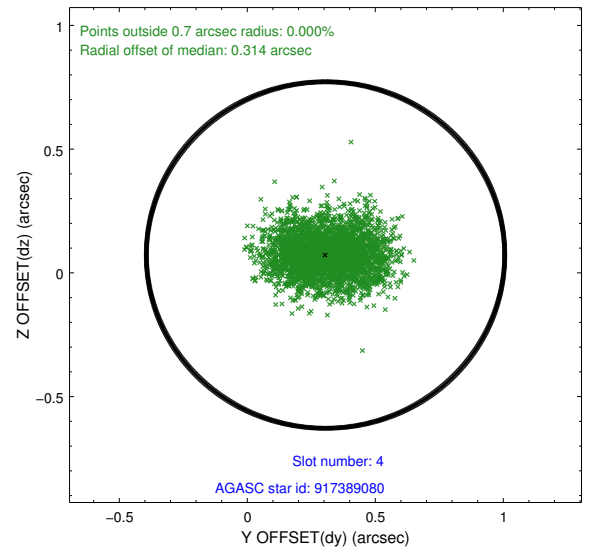
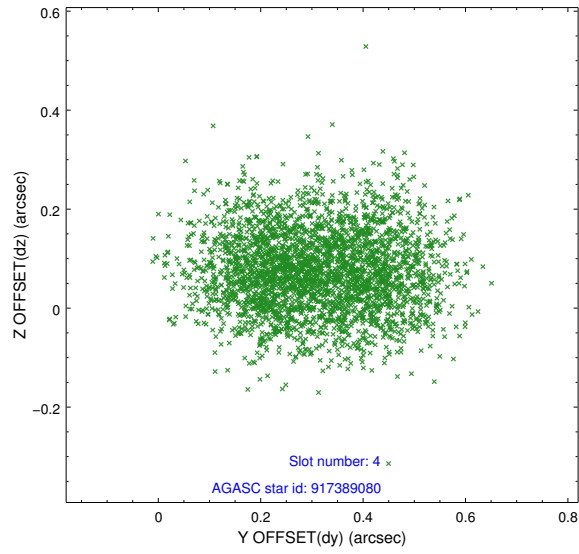
slot	status	id	mag	n_pts	med_dy	med_dz	dr1	dr2	ra	dec	mean_y	mean_z
0	FID	ACIS-S-2	7.10	1502	-0.065	-0.033	0.007	0.013	0.000000	0.000000	-758.78	-1731.03
1	FID	ACIS-S-4	7.20	1502	0.095	0.040	0.006	0.010	0.000000	0.000000	2154.20	176.57
2	FID	ACIS-S-5	7.23	1501	-0.062	0.002	0.007	0.012	0.000000	0.000000	-1810.41	171.24
3	GUIDE	917386656	7.26	3005	-0.131	0.003	0.065	0.104	15.342124	-33.359890	203.31	1599.96
4	GUIDE	917389080	10.11	3004	0.306	0.072	0.159	0.249	15.722484	-33.662555	1737.52	1228.35
5	GUIDE	917390768	9.88	3004	-0.038	0.108	0.115	0.184	14.870561	-33.104152	-1486.53	1680.11
6	GUIDE	917650528	8.71	3004	-0.083	-0.047	0.071	0.110	14.274554	-33.869842	-1627.38	-1603.41
7	GUIDE	917651768	9.61	3002	-0.060	-0.140	0.099	0.163	14.115744	-33.817552	-2131.57	-1685.71

## 2.4 Star Slots

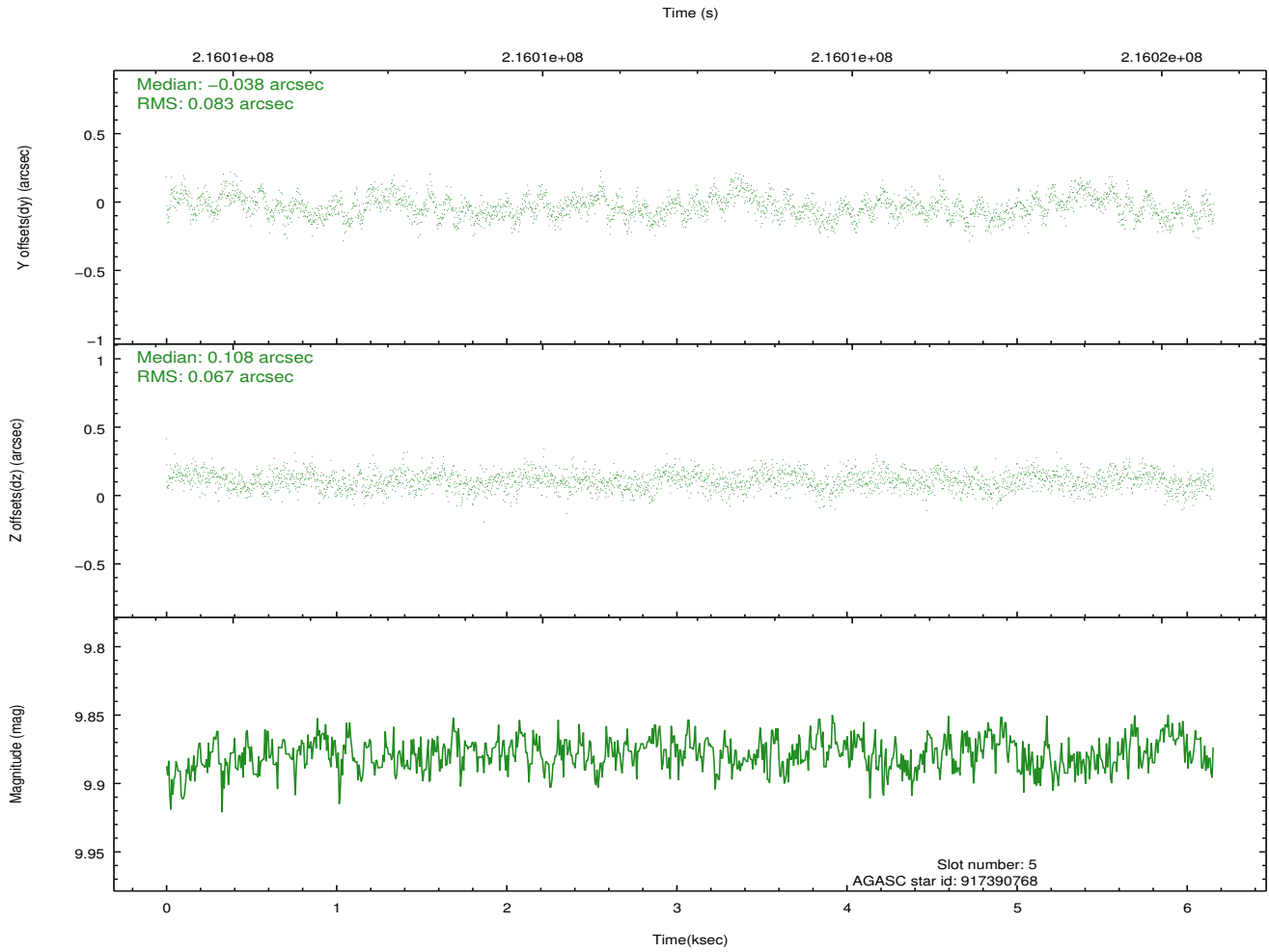
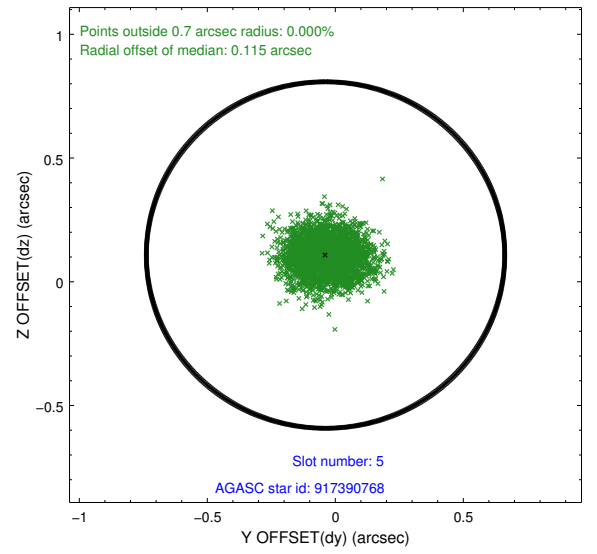
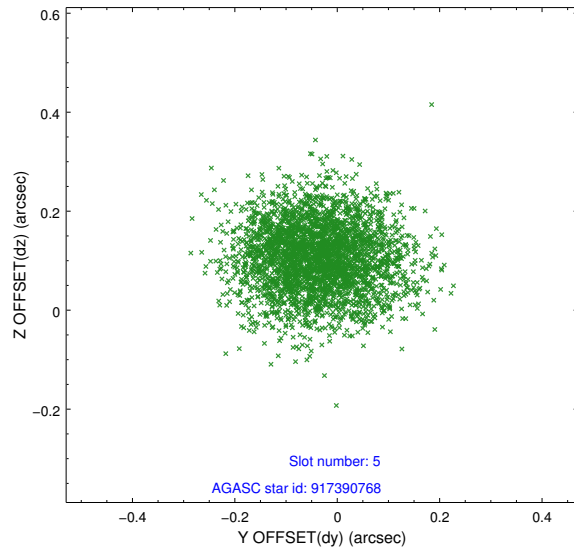
### 2.4.1 Slot 3



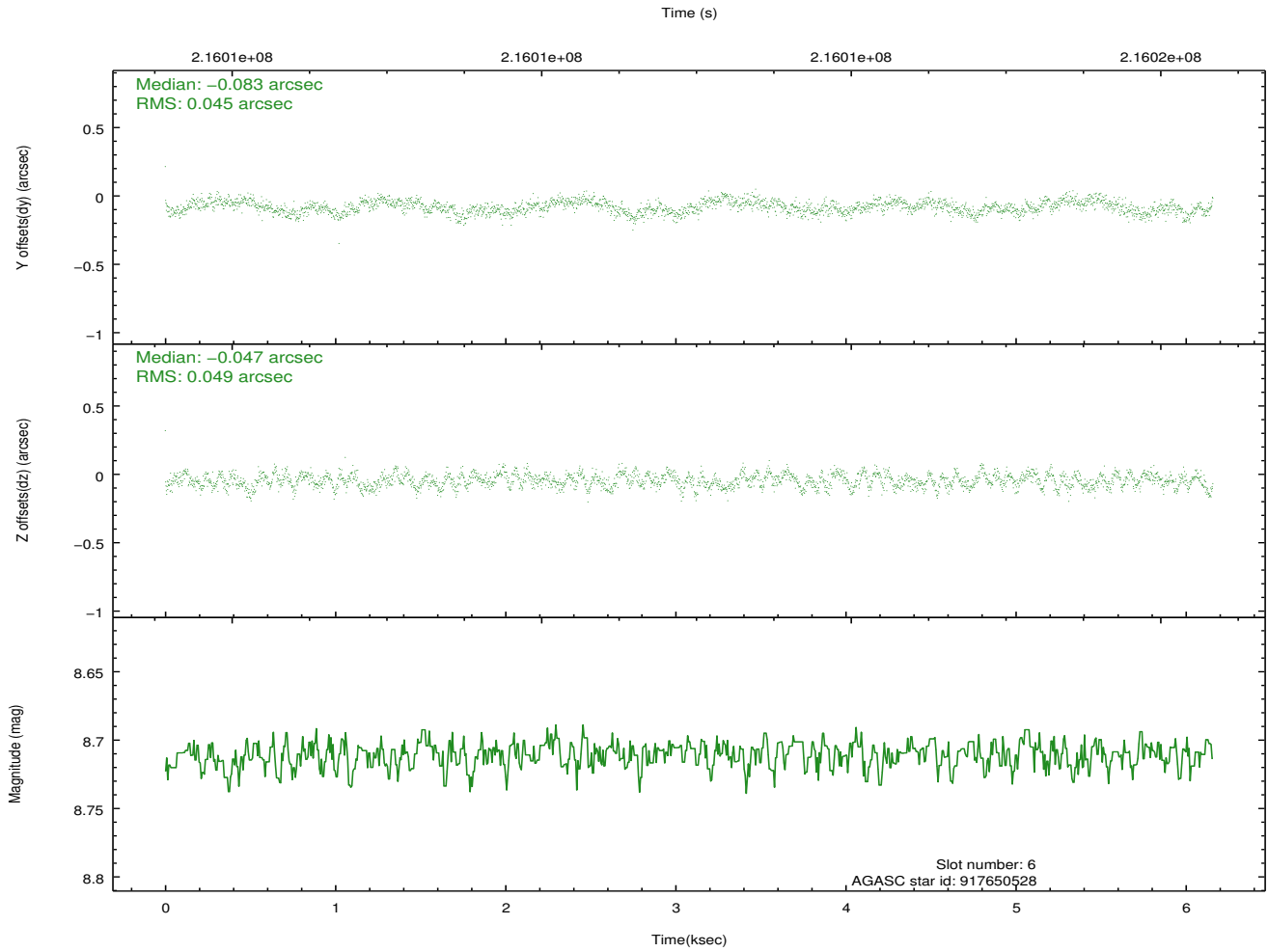
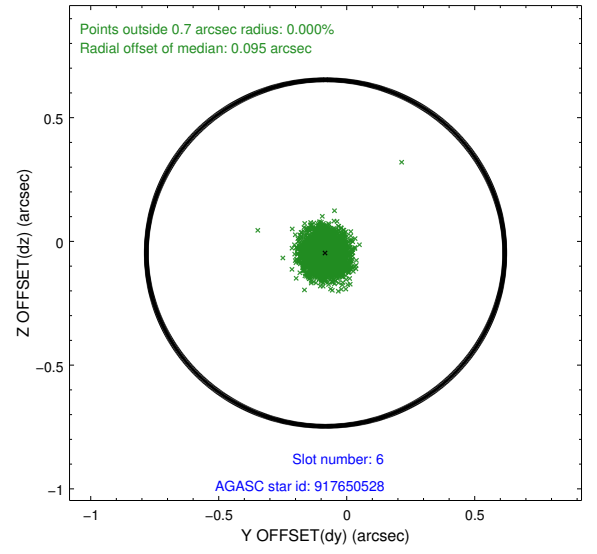
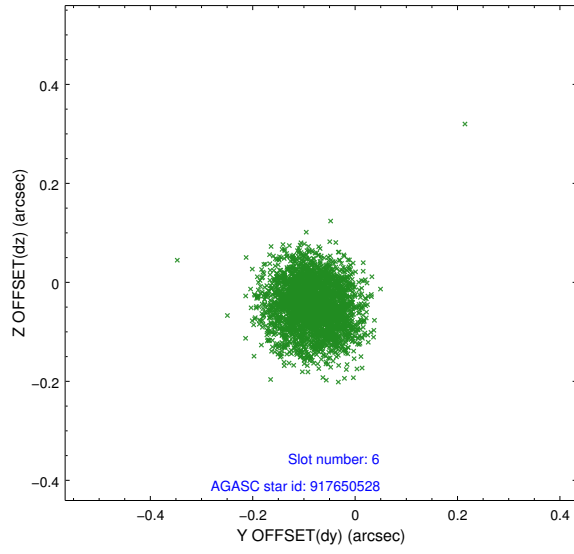
## 2.4.2 Slot 4



### 2.4.3 Slot 5

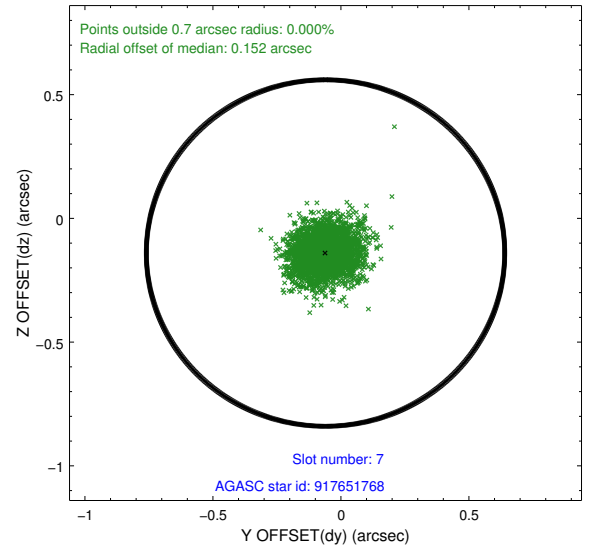
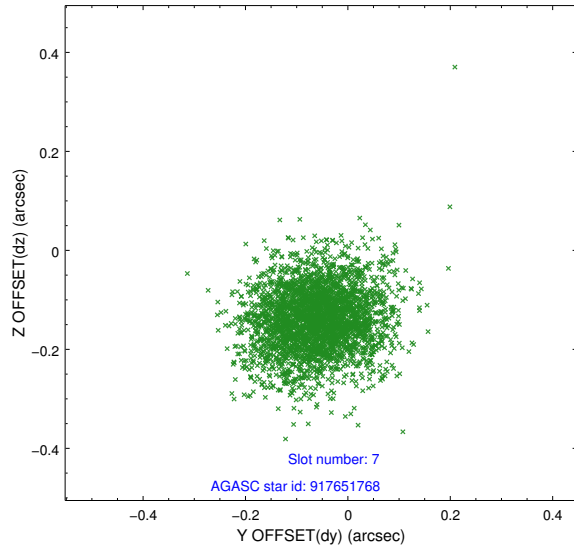


## 2.4.4 Slot 6

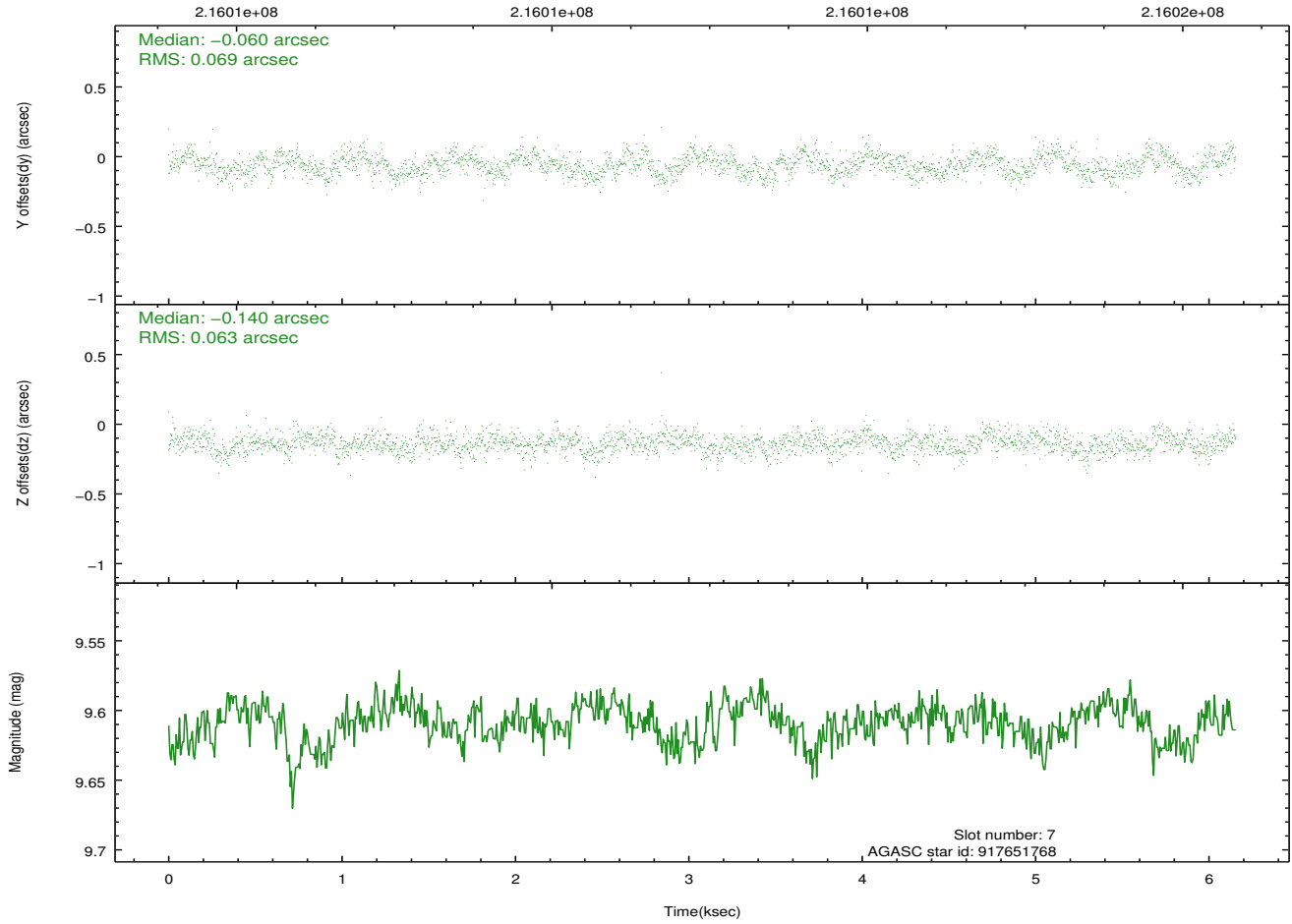




## 2.4.5 Slot 7

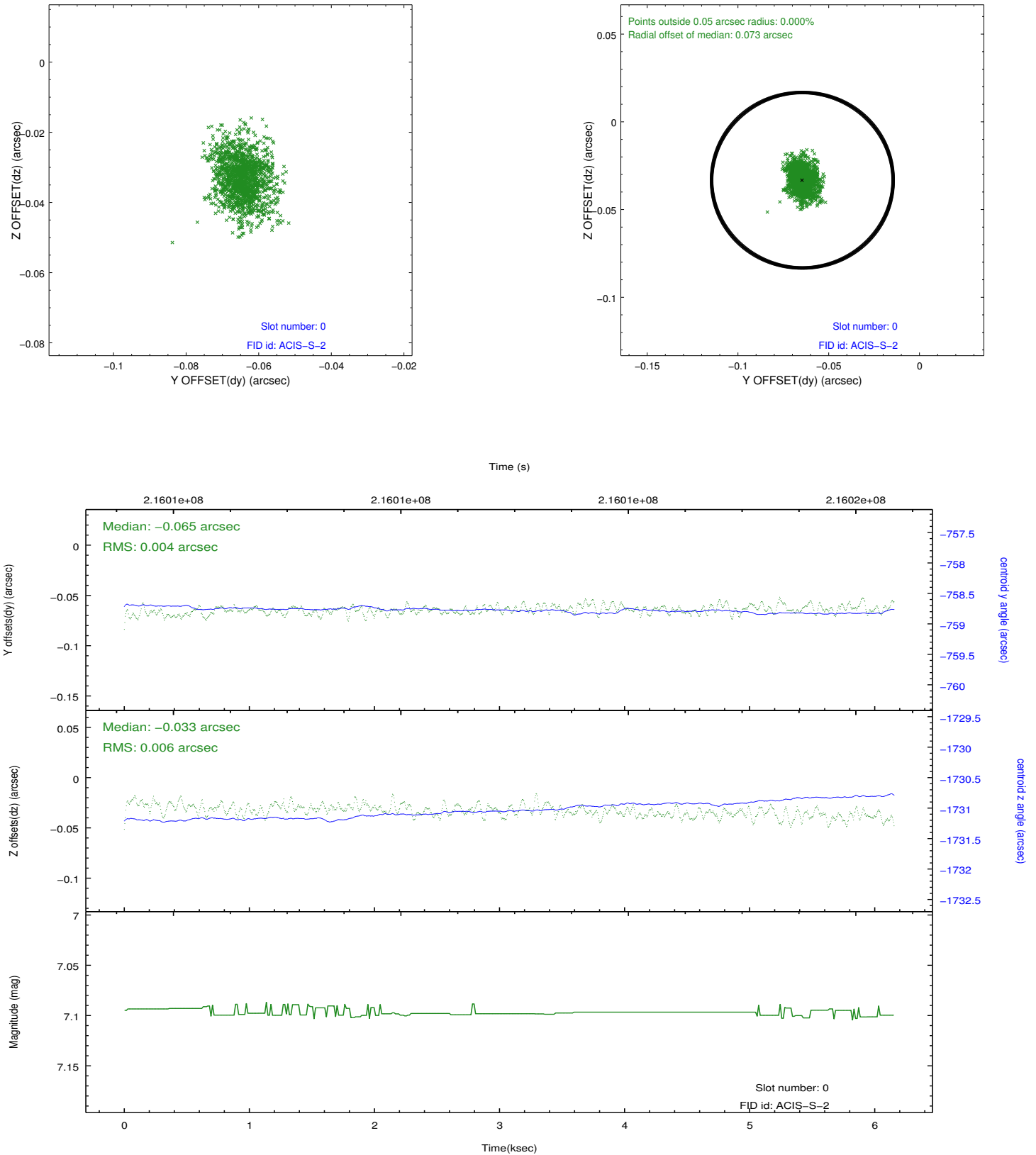


Time (s)

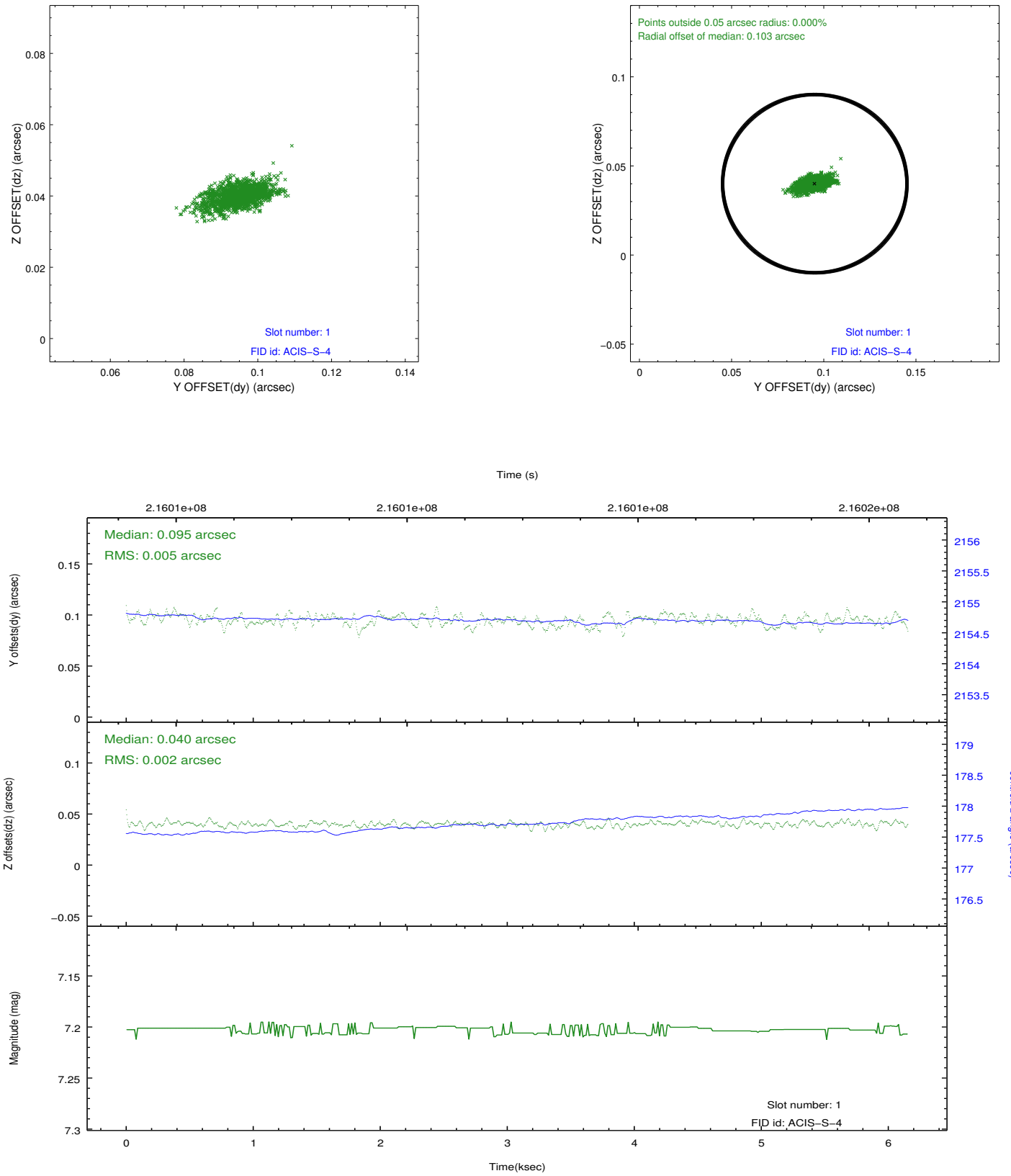


## 2.5 FID Slots

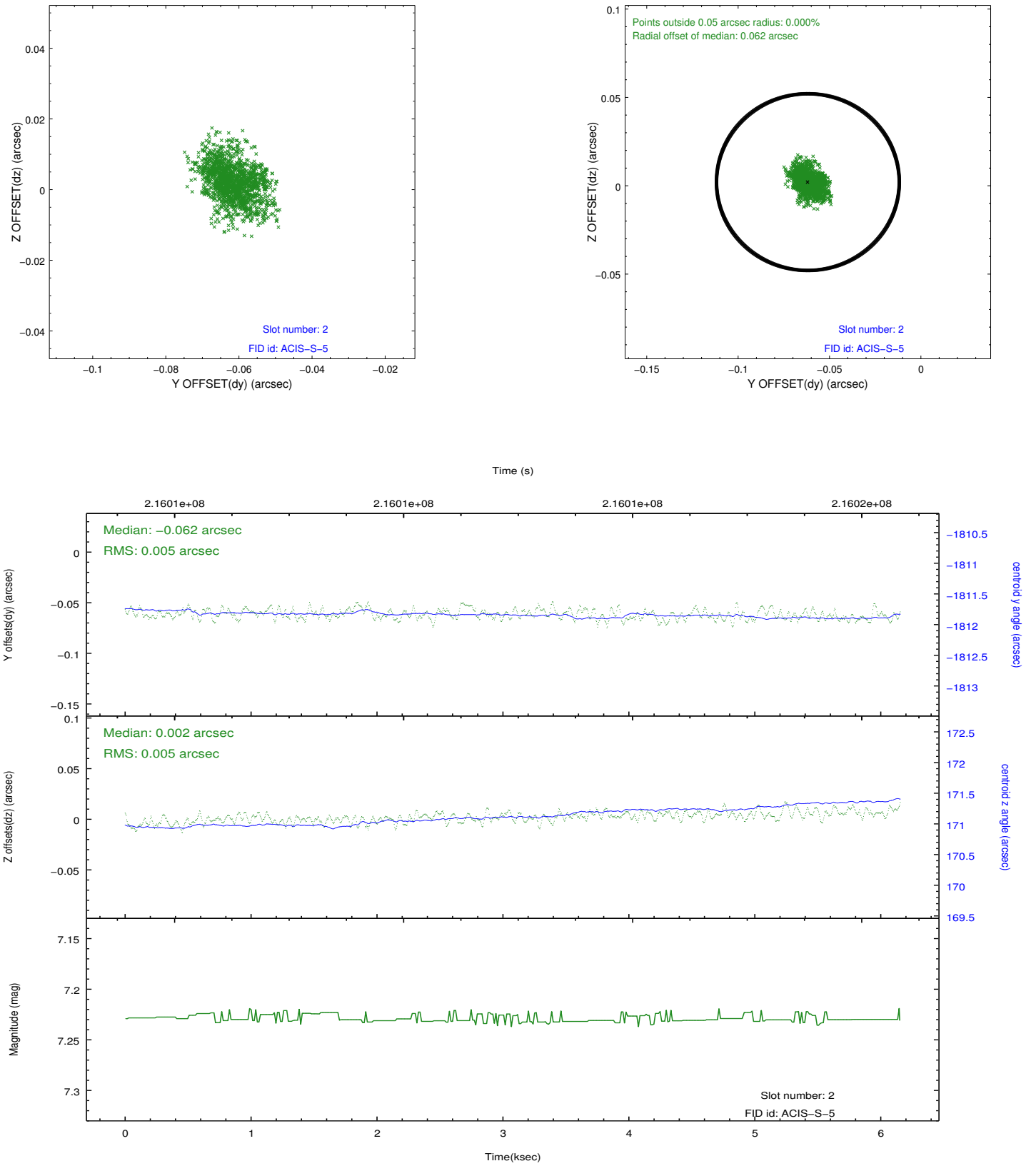
### 2.5.1 Slot 0



## 2.5.2 Slot 1



### 2.5.3 Slot 2



## A Summary

### A.1 Status

V&V Scientist	Jen Lauer
V&V Date (YYYY-MM-DD)	2013.01.03
V&V Edition	1
V&V Disposition and Status	OK
V&V Charge Time	6.15

### A.2 Comments

Monitor constraint met. Joint Proposal: NOAO