

V&V Reference Report

L2 ASCDS Version : 7.6.7.2

Observation 4701 - L2 Version 001
Chandra X-Ray Center

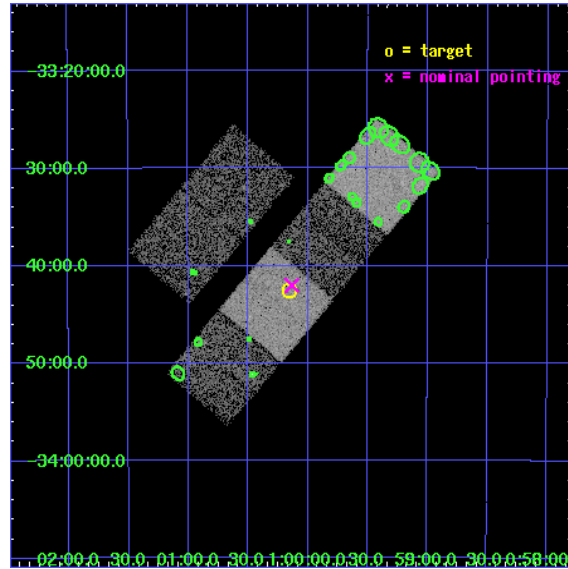
L2 Processing Date : May 17 2006

Contents

1	Front	2
2	OBI	3
2.1	OBI	3
2.1.1	Images	3
2.1.2	Bias	3
2.1.3	Parameters	4
2.1.4	Events	4
2.2	Compared Parameters	5
2.3	Aspect	6
2.4	Star Slots	9
2.4.1	Slot 3	9
2.4.2	Slot 4	10
2.4.3	Slot 5	11
2.4.4	Slot 6	12
2.4.5	Slot 7	13
2.5	FID Slots	14
2.5.1	Slot 0	14
2.5.2	Slot 1	15
2.5.3	Slot 2	16
3	Point Sources	17
A	Summary	18
A.1	Status	18
A.2	Comments	18

1 Front

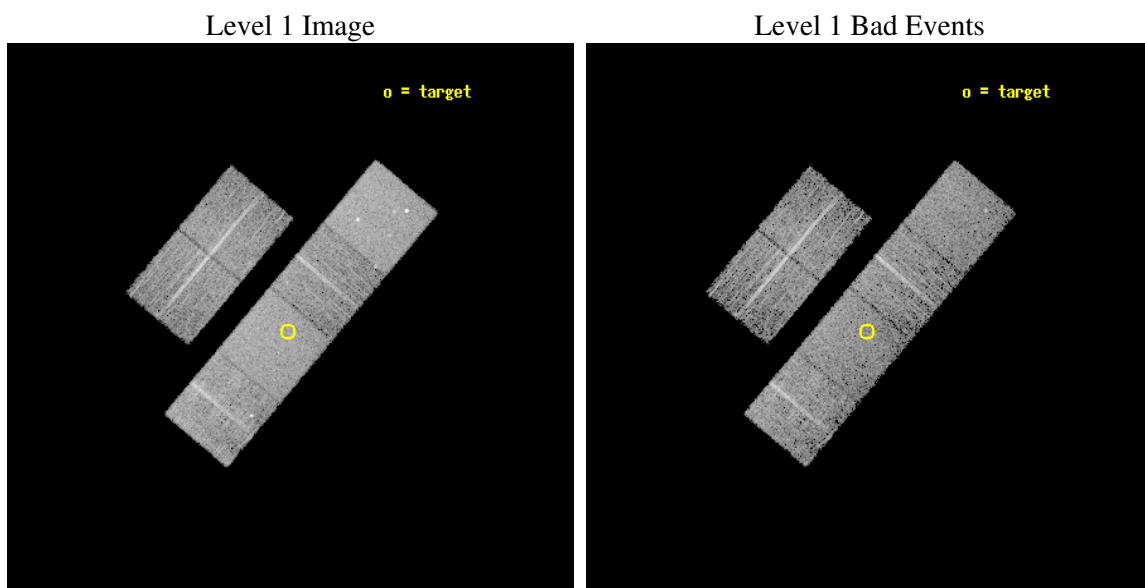
seq_num	600356
obs_id	4701
title	Using the Sculptor Dwarf Spheroidal Galaxy to Constrain X-ray Binary Production in Population II
observer	Dr. Thomas Maccarone
object	SCULPTOR DWARF SPHEROIDAL
dtcycle	0
cycle	P
ra_targ	15.039167
dec_targ	-33.708889
ra_nom	15.033361875408
dec_nom	-33.700594928914
roll_nom	130.0232106016
revision	3
ontime	6147.1999770999
livetime	6069.3604295904
ontime2	6147.1999770999
ontime3	6147.1999770999
ontime5	6147.1999770999
ontime6	6140.7179867029
ontime7	6147.1999770999
ontime8	6147.1999770999
l2events	67974



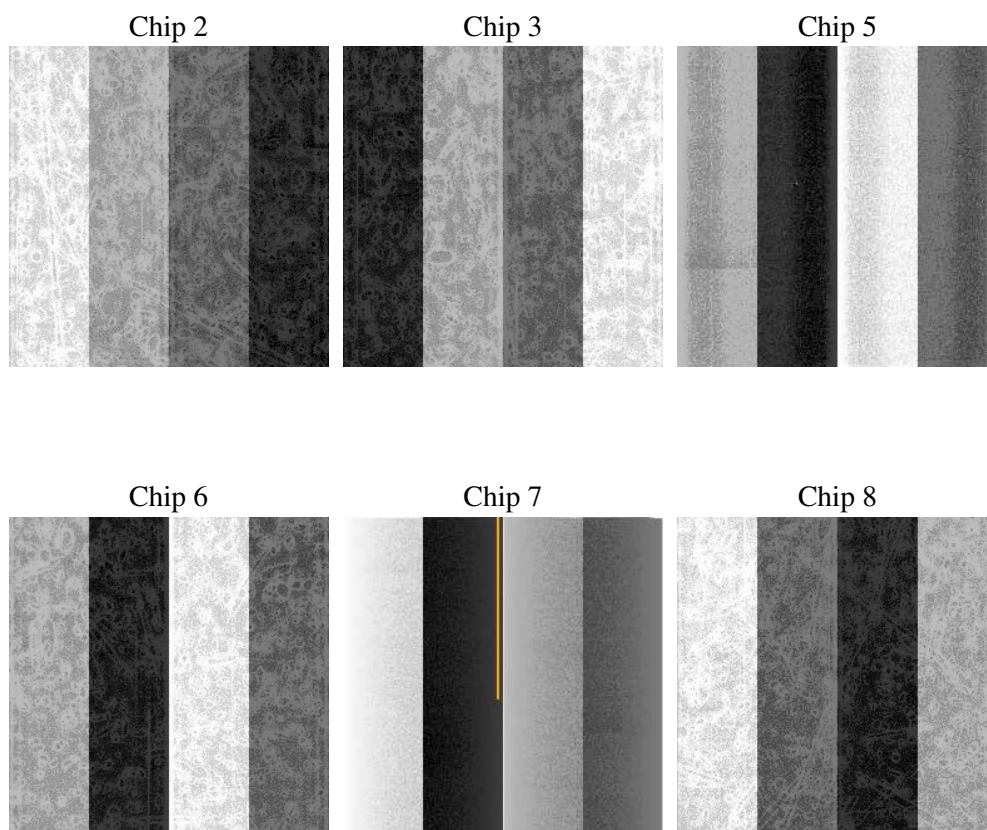
2 OBI

2.1 OBI

2.1.1 Images



2.1.2 Bias



2.1.3 Parameters

obi_num	1
ascdsver	7.6.7.2
caldsver	3.2.2
date	2006-05-17T16:12:35
revision	3

sched_exp_time	6000.000000
ontime	7480.2407306433
ontime2	7480.2407306433
ontime3	7480.2407306433
ontime5	7480.2407505214
ontime6	7473.7587402463
ontime7	7480.2407306433
ontime8	7480.2407306433
l1events	383572

2.1.4 Events

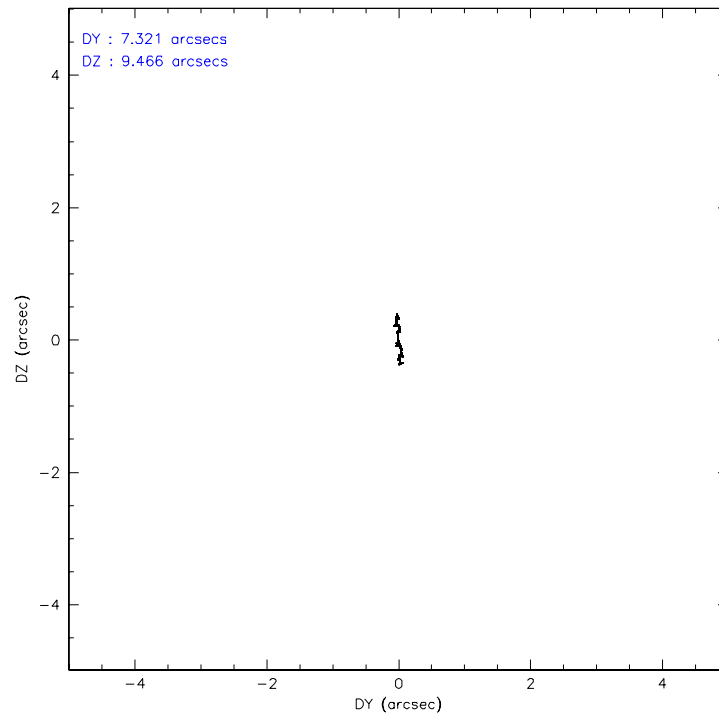
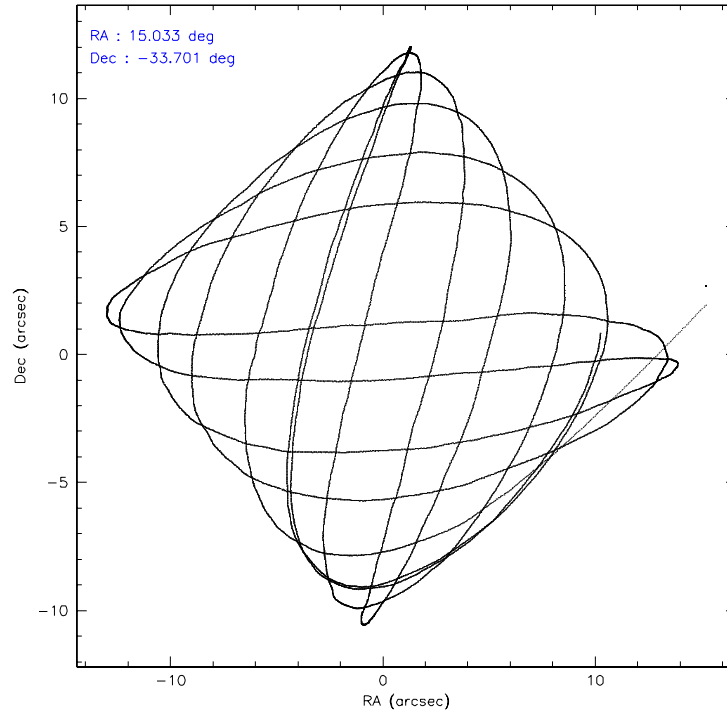
	ccd 2	ccd 3	ccd 5	ccd 6	ccd 7	ccd 8
level 1 events	53825	53249	80454	54199	72280	69565
rejected events	48503	48255	51406	48907	50097	57219
rejected %	90%	90%	63%	90%	69%	82%

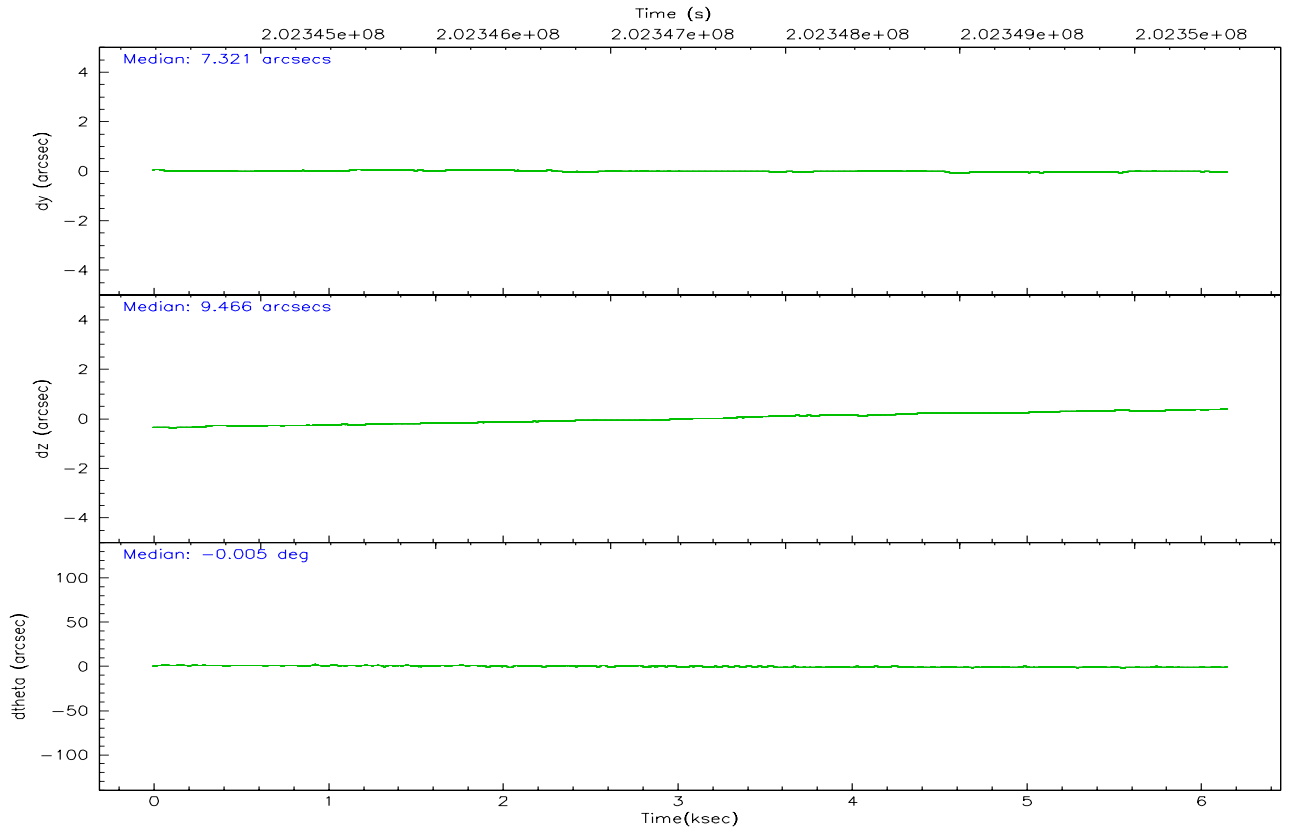
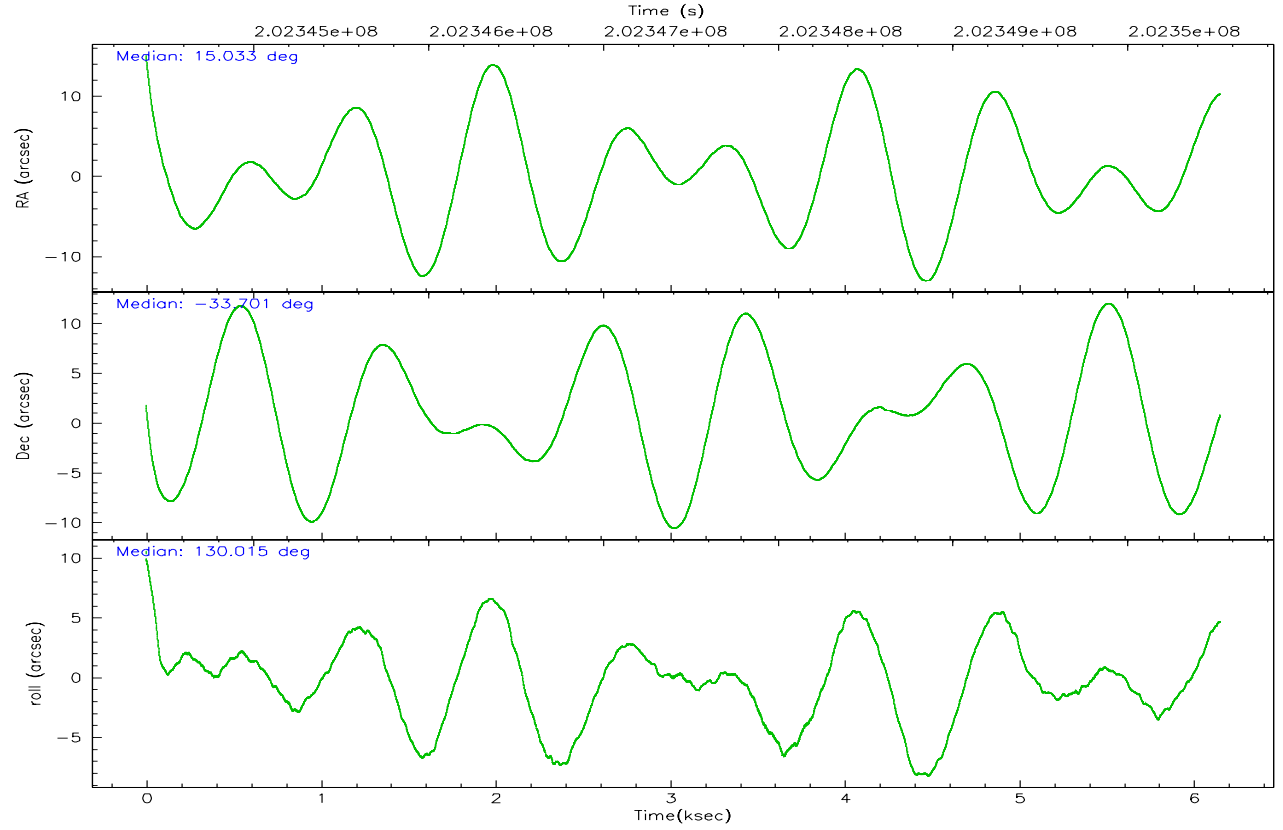
	ccd 2	ccd 3	ccd 5	ccd 6	ccd 7	ccd 8
grade 0 events	2807	2646	3330	2579	1572	4932
	5%	4%	4%	4%	2%	7%
grade 1 events	39	35	254	28	43	42
	0%	0%	0%	0%	0%	0%
grade 2 events	1279	1185	10764	1297	6834	3303
	2%	2%	13%	2%	9%	4%
grade 3 events	641	591	757	661	1380	1615
	1%	1%	0%	1%	1%	2%
grade 4 events	612	605	765	598	1289	1522
	1%	1%	0%	1%	1%	2%
grade 5 events	2115	2334	3831	2530	4854	3186
	3%	4%	4%	4%	6%	4%
grade 6 events	1132	1114	19972	1284	16121	4000
	2%	2%	24%	2%	22%	5%
grade 7 events	45200	44739	40781	45222	40187	50965
	83%	84%	50%	83%	55%	73%

2.2 Compared Parameters

Parameter	Planned	Actual	Parameter	Planned	Actual
Instrument	ACIS	ACIS	Obspar format version number	6	6
Detector	ACIS-235678	ACIS-235678	Obspar file type	PREDICTED	ACTUAL
Grating	NONE	NONE	Obspar update status	NONE	UPDATED
Data mode	VFAINT	VFAINT	On-chip summing requested	N	N
Observation mode	POINTING	POINTING	Subarray requested	NONE	NONE
Pointing RA	15.064281	15.03336187540791	Alternating exposures requested	N	N
Pointing Dec	-33.709456	-33.70059492891396	Primary exposure time	0.000000	3.2
Pointing Roll	129.883738	130.0232106016036			
SIM focus pos (mm)	-0.684267	-0.6828225247311905			
SIM defocus (mm)	0	0.001444936568705701			
SIM translation stage pos (mm)	-190.132523	-190.1400660498719			
SIM translation stage offset (mm)	0	0.00754346686406393			
Observation start time	202344531.184000	202342667.03264			
Observation start date	2004-05-30T22:47:47	2004-05-30T22:17:47			
Observation end time	202350531.184000	202351731.62054			
Observation end date	2004-05-31T00:27:47	2004-05-31T00:48:51			
Read mode	TIMED	TIMED			

2.3 Aspect



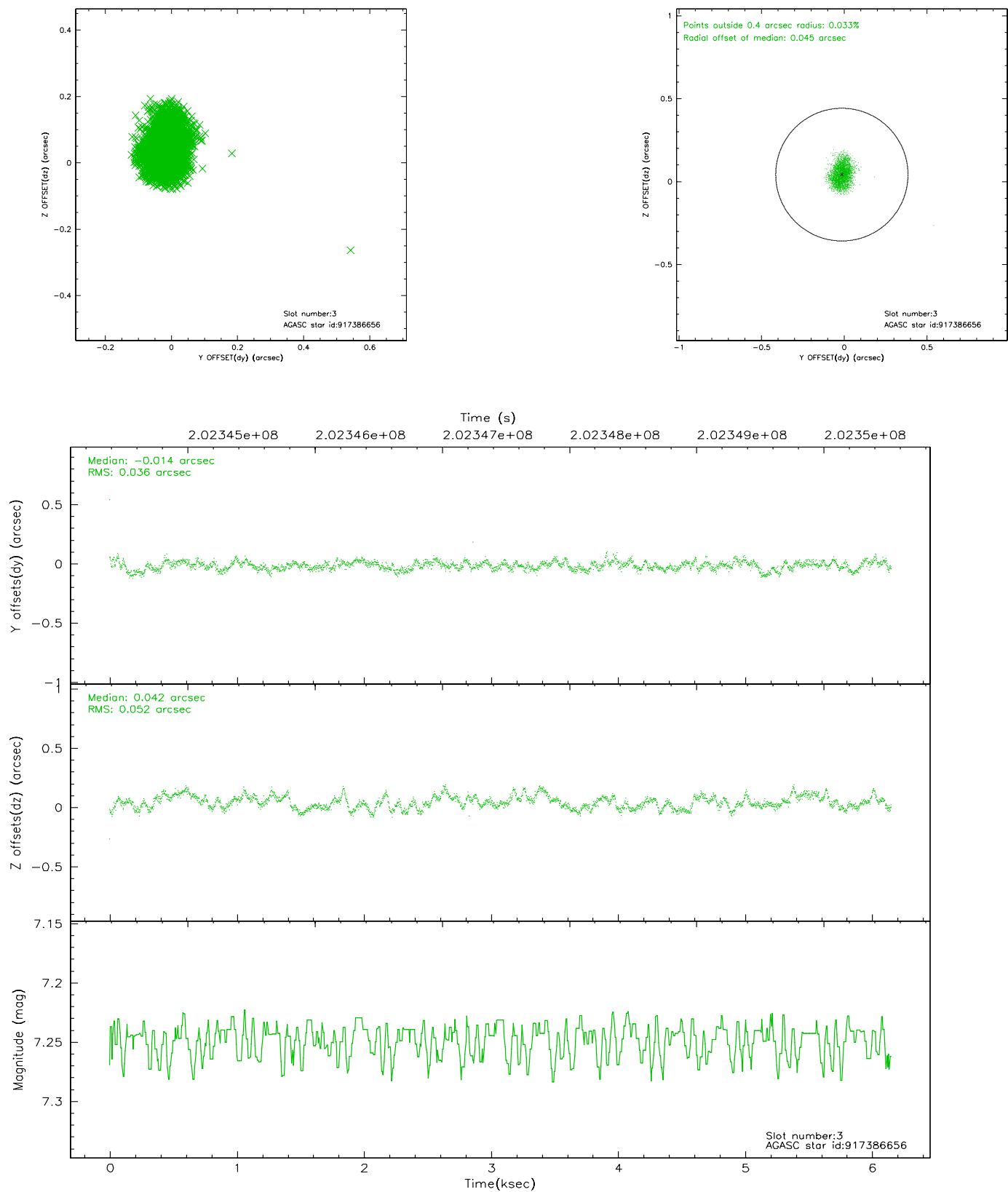


Slot Statistics

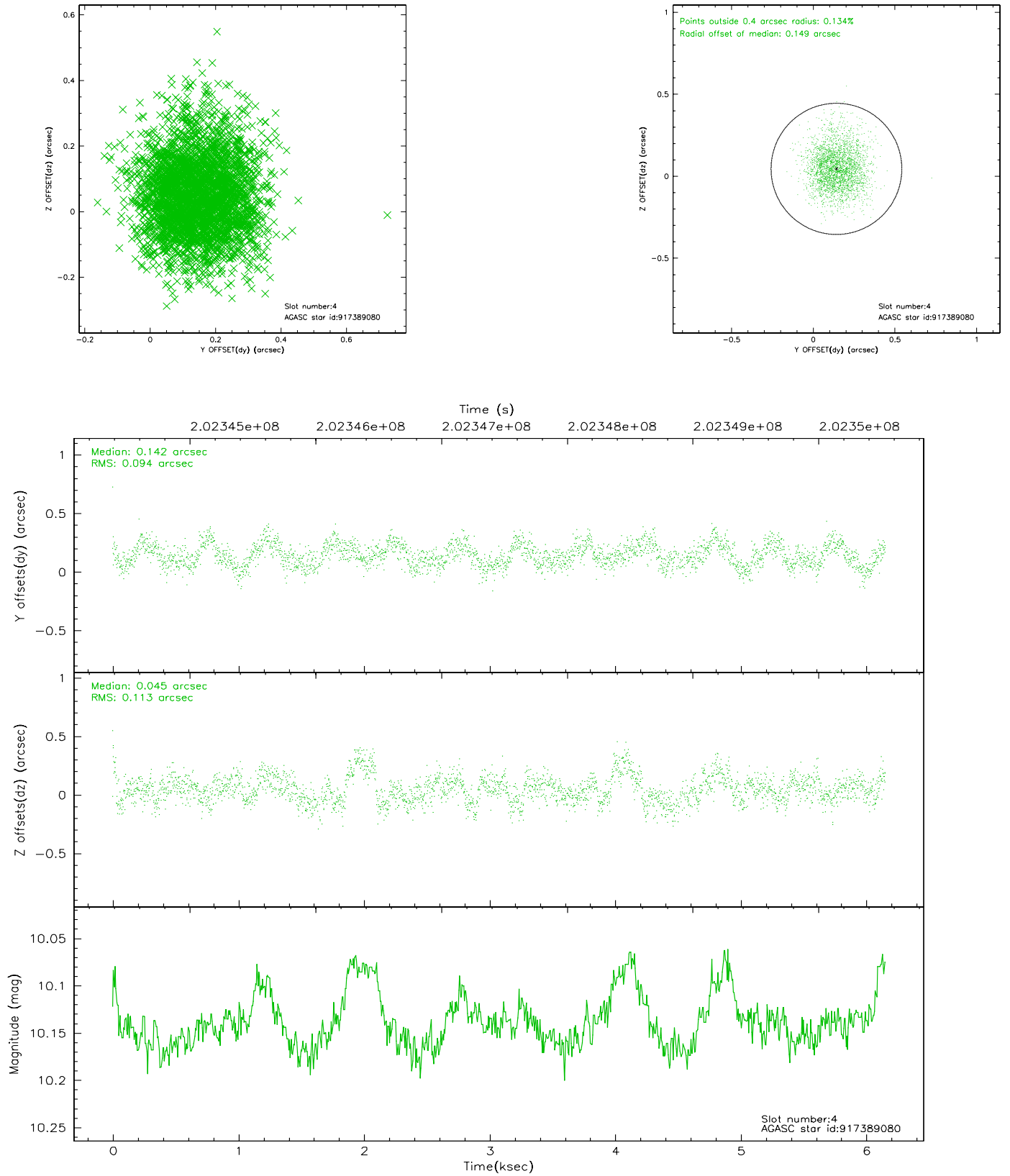
slot	status	id	mag	n_pts	med_dy	med_dz	dr1	dr2	ra	dec	mean_y	mean_z
0	FID	ACIS-S-2	7.10	1501	-0.024	-0.002	0.010	0.015	0.000000	0.000000	-760.07	-1730.73
1	FID	ACIS-S-4	7.20	1501	0.033	0.012	0.006	0.011	0.000000	0.000000	2152.79	176.82
2	FID	ACIS-S-5	7.23	1502	-0.041	-0.000	0.009	0.014	0.000000	0.000000	-1811.73	171.51
3	GUIDE	917386656	7.25	3003	-0.014	0.042	0.068	0.106	15.342124	-33.359890	429.75	-1447.29
4	GUIDE	917389080	10.14	2974	0.142	0.045	0.155	0.258	15.722484	-33.662555	-1138.88	-1618.18
5	GUIDE	917389288	9.56	2992	-0.035	0.243	0.119	0.203	15.394706	-33.185862	807.10	-1971.70
6	GUIDE	917650528	8.72	3003	-0.079	-0.364	0.096	0.143	14.274554	-33.869842	1064.01	2186.53
7	GUIDE	917389592	9.98	3001	-0.012	0.027	0.209	0.342	16.074673	-33.644125	-1771.54	-2464.48

2.4 Star Slots

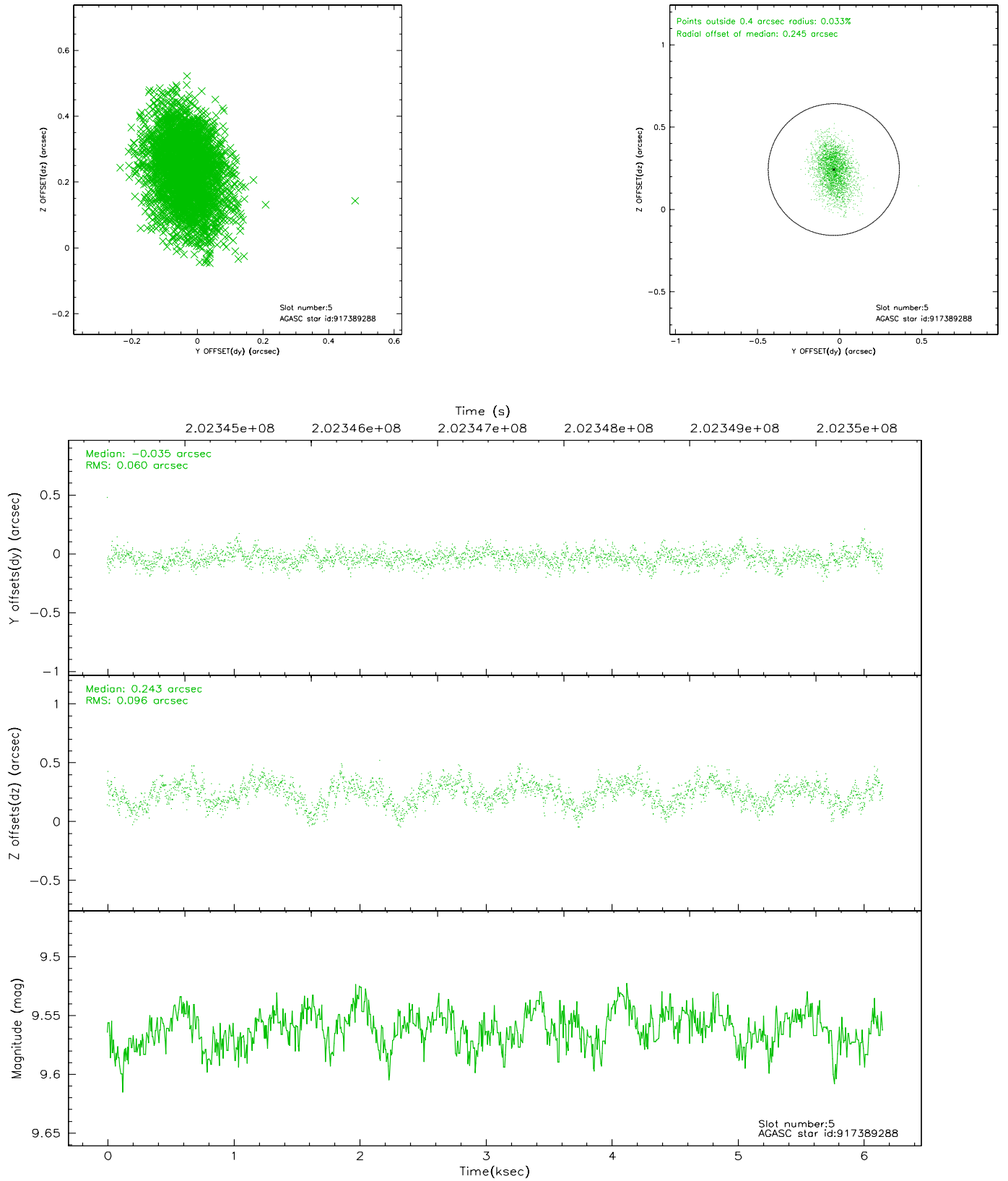
2.4.1 Slot 3



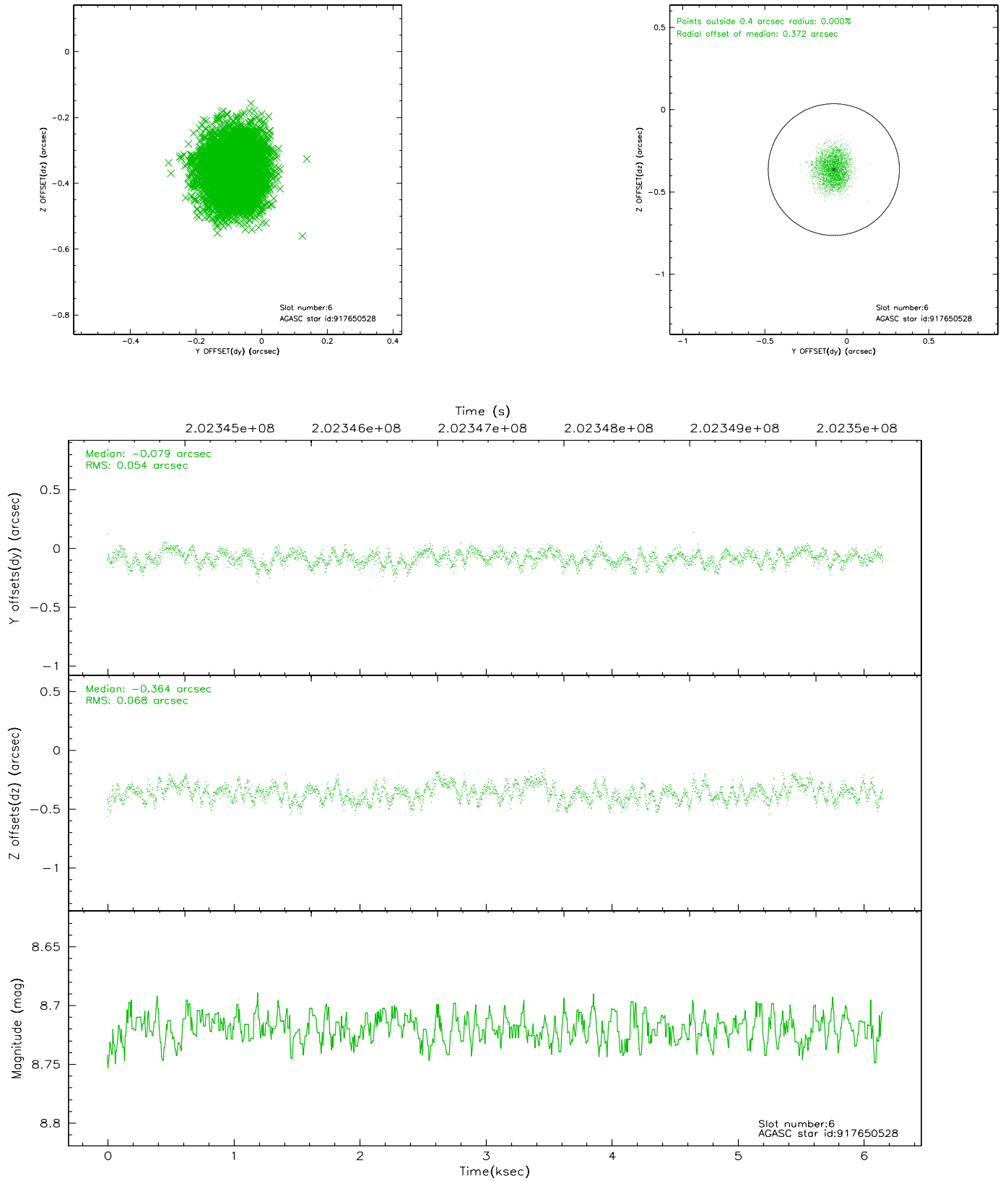
2.4.2 Slot 4



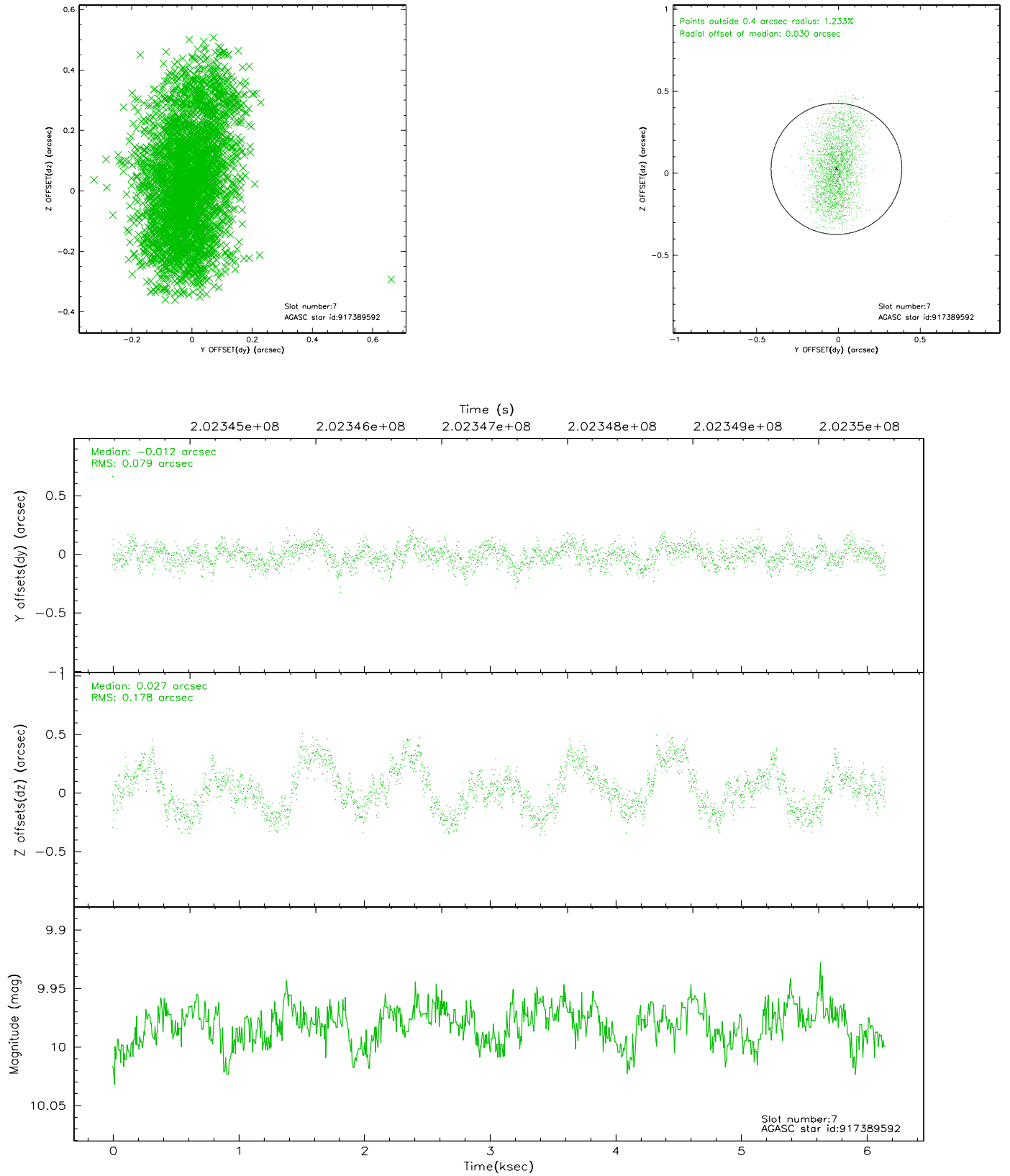
2.4.3 Slot 5



2.4.4 Slot 6

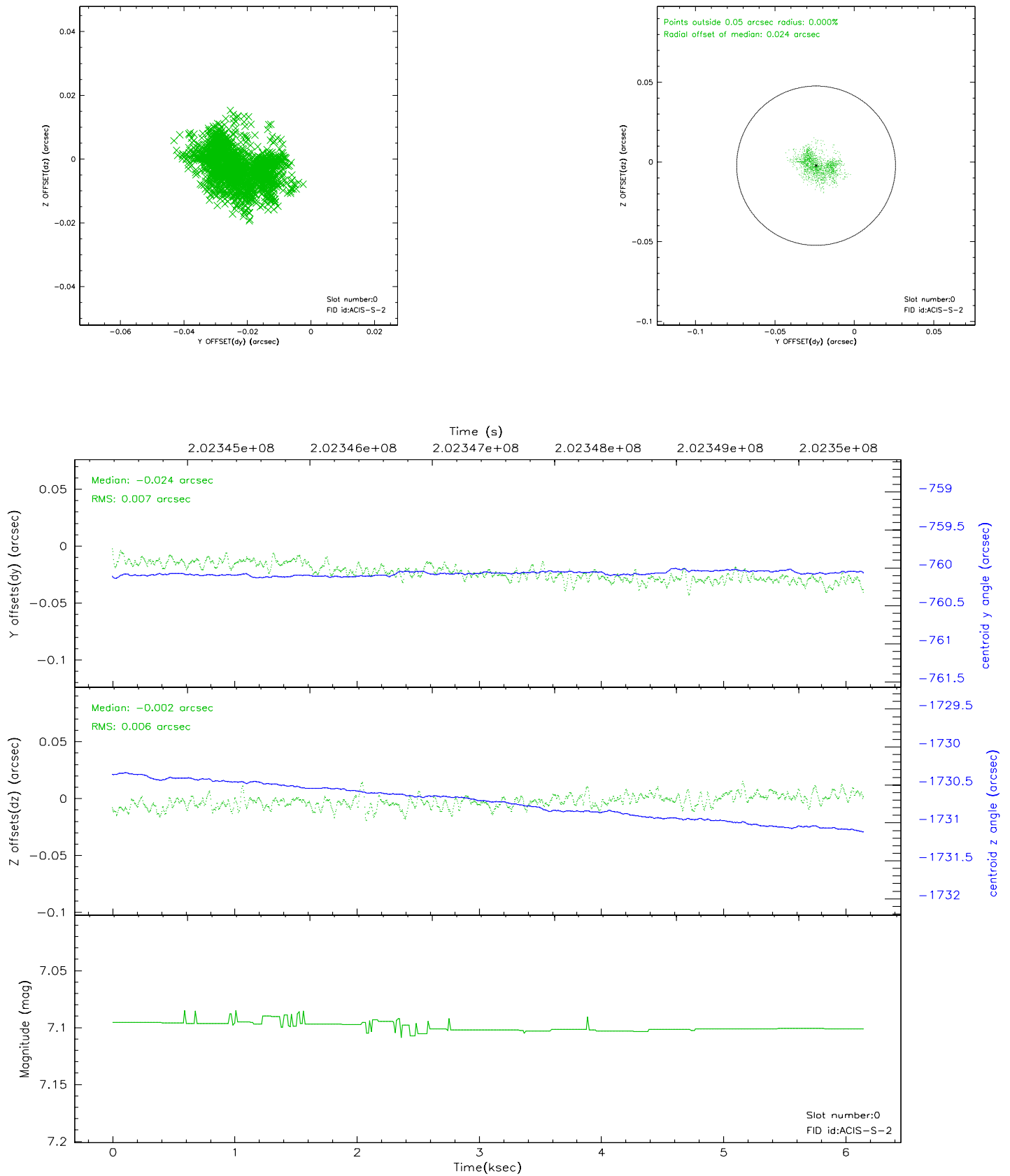


2.4.5 Slot 7

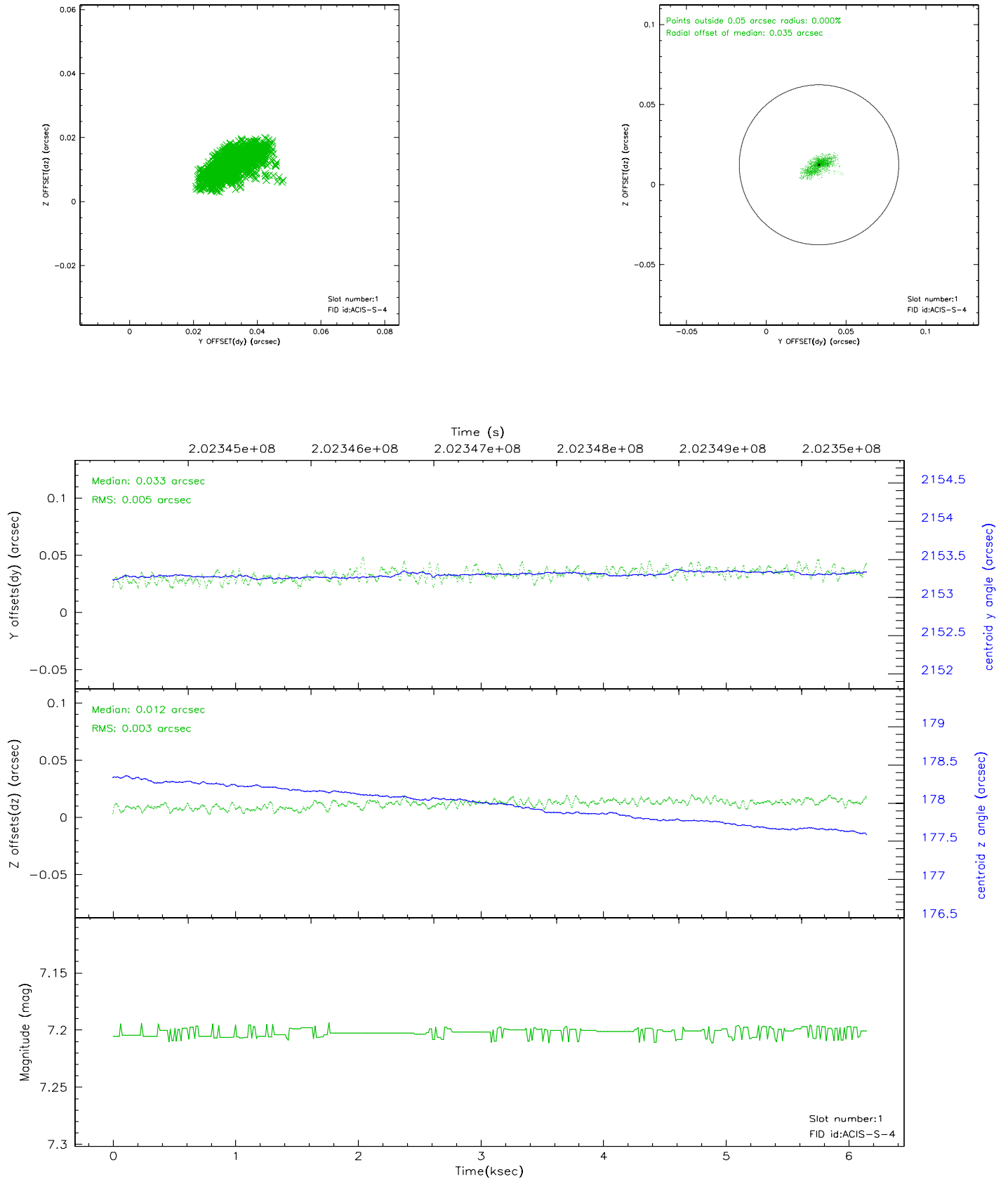


2.5 FID Slots

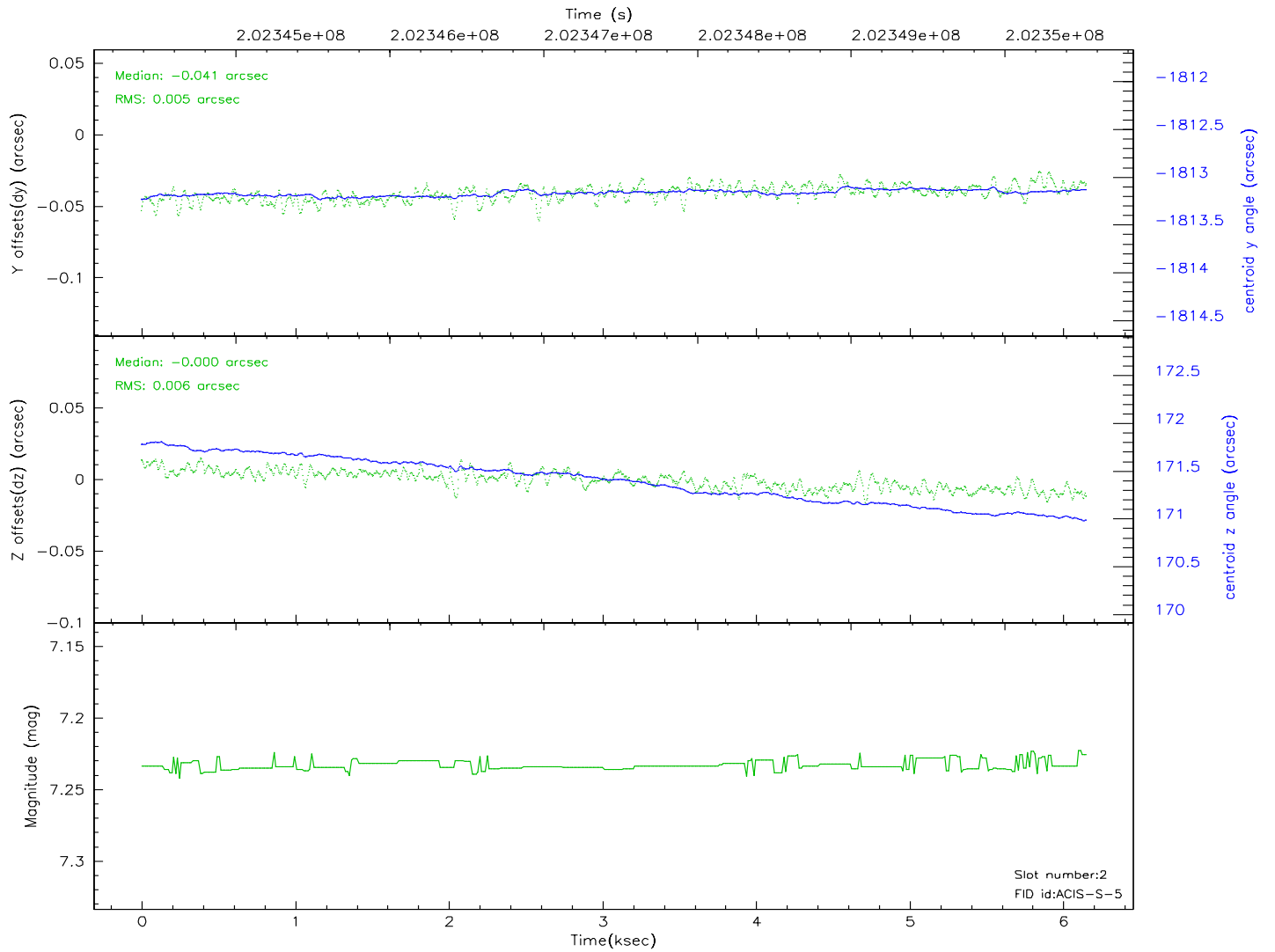
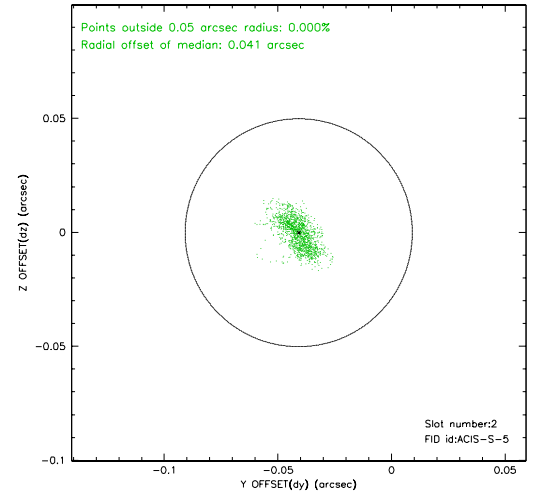
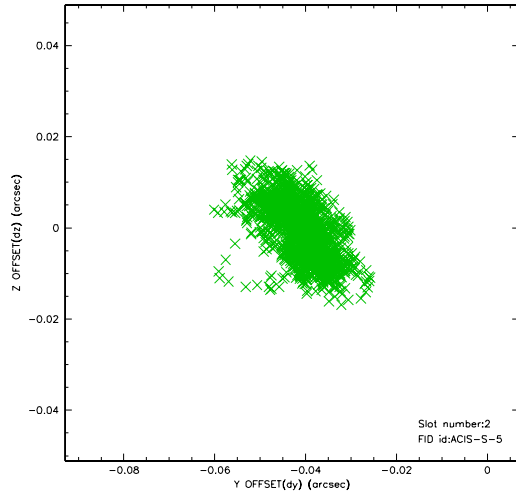
2.5.1 Slot 0



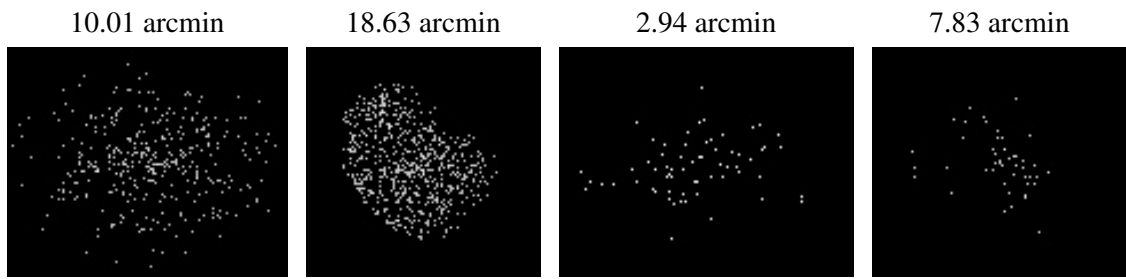
2.5.2 Slot 1



2.5.3 Slot 2



3 Point Sources



A Summary

A.1 Status

V&V Scientist	Jen Lauer
V&V Date (YYYY-MM-DD)	2006.05.17
V&V Edition	1
V&V Disposition and Status	OK
V&V Charge Time	6.147

A.2 Comments

Monitor constraint met.