

V&V Reference Report

L2 ASCDS Version : 7.6.8

Observation 4695 - L2 Version 001
Chandra X-Ray Center

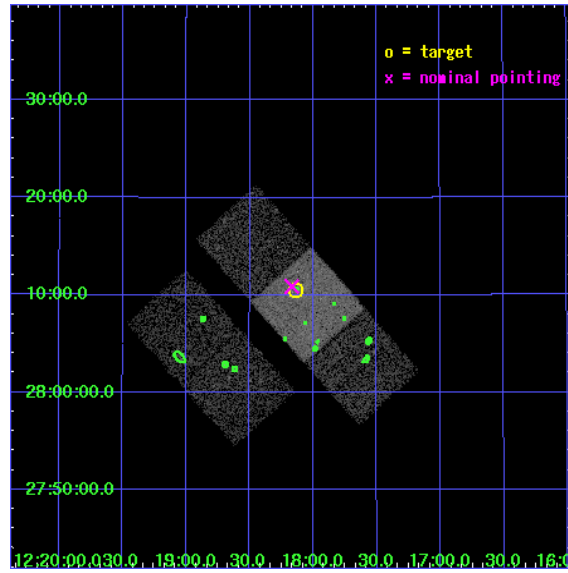
L2 Processing Date : Jun 30 2006

Contents

1	Front	2
2	OBI	3
2.1	OBI	3
2.1.1	Images	3
2.1.2	Bias	3
2.1.3	Parameters	4
2.1.4	Events	4
2.2	Compared Parameters	5
2.3	Aspect	6
2.4	Star Slots	9
2.4.1	Slot 3	9
2.4.2	Slot 4	10
2.4.3	Slot 5	11
2.4.4	Slot 6	12
2.4.5	Slot 7	13
2.5	FID Slots	14
2.5.1	Slot 0	14
2.5.2	Slot 1	15
2.5.3	Slot 2	16
3	Point Sources	17
A	Summary	18
A.1	Status	18
A.2	Comments	18

1 Front

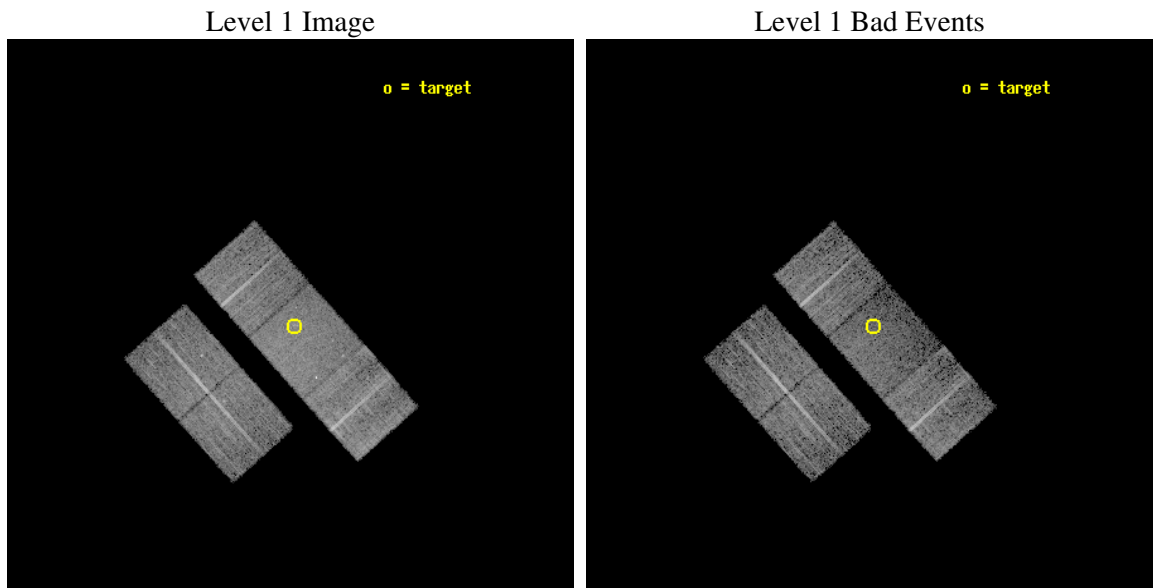
seq_num	600350
obs_id	4695
title	Physics of Accretion Flows in Ultra-low Luminosity AGNs: A Mini Survey of a Distance-Limited Sample of Inactive Galaxies
observer	Dr. Yuichi Terashima
object	NGC 4251
dtcycle	0
cycle	P
ra_targ	184.533333
dec_targ	28.175556
ra_nom	184.54199733356
dec_nom	28.181516510868
roll_nom	48.263261858713
revision	2
ontime	10177.299980432
livetime	10044.326063768
ontime2	10177.299980432
ontime3	10177.299980432
ontime6	10174.159020215
ontime7	10177.299980432
ontime8	10174.158990294
l2events	42008



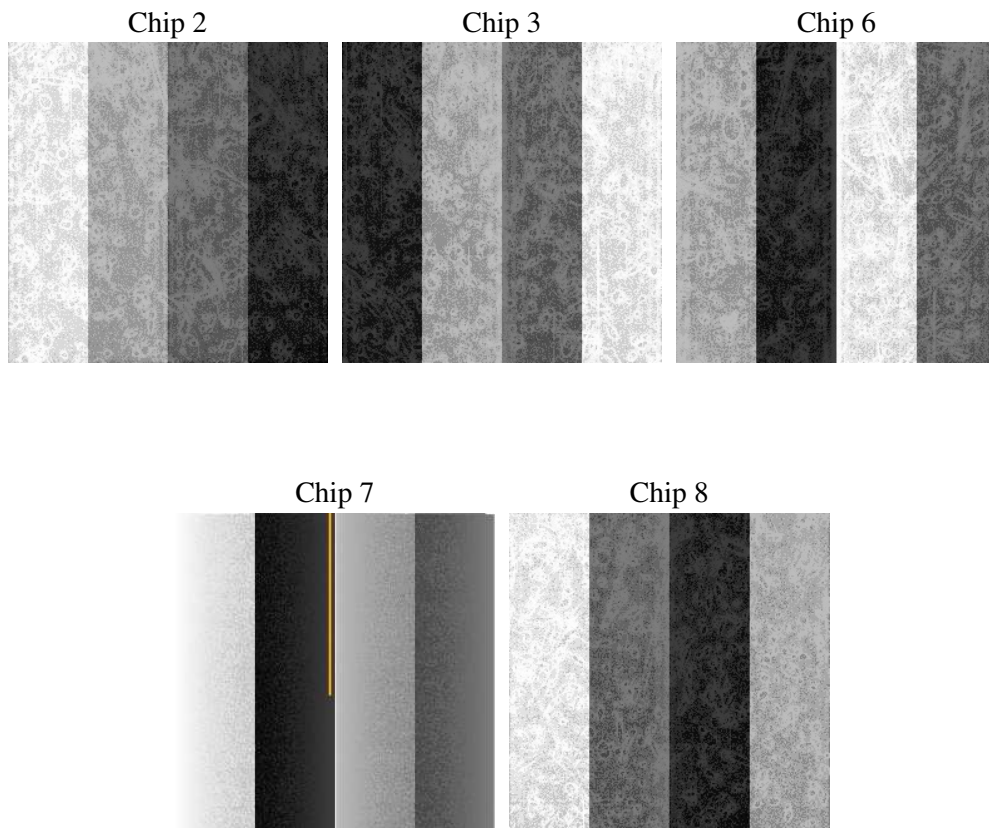
2 OBI

2.1 OBI

2.1.1 Images



2.1.2 Bias



2.1.3 Parameters

obi_num	0
ascdsver	7.6.8
caldbver	3.2.2
date	2006-06-30T18:08:43
revision	2

sched_exp_time	10000.000000
ontime	11474.079347581
ontime2	11474.079347581
ontime3	11474.079327673
ontime6	11470.938367456
ontime7	11474.079347581
ontime8	11470.938337535
l1events	292032

2.1.4 Events

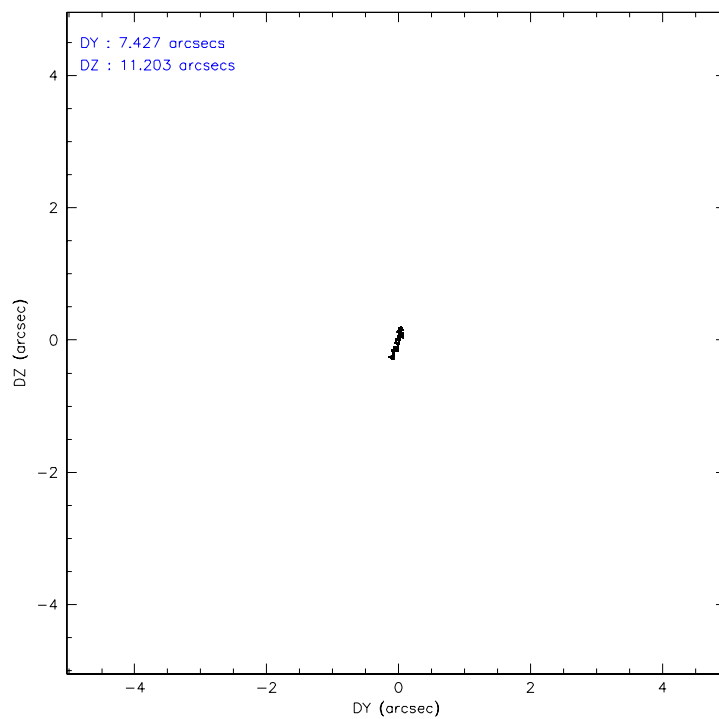
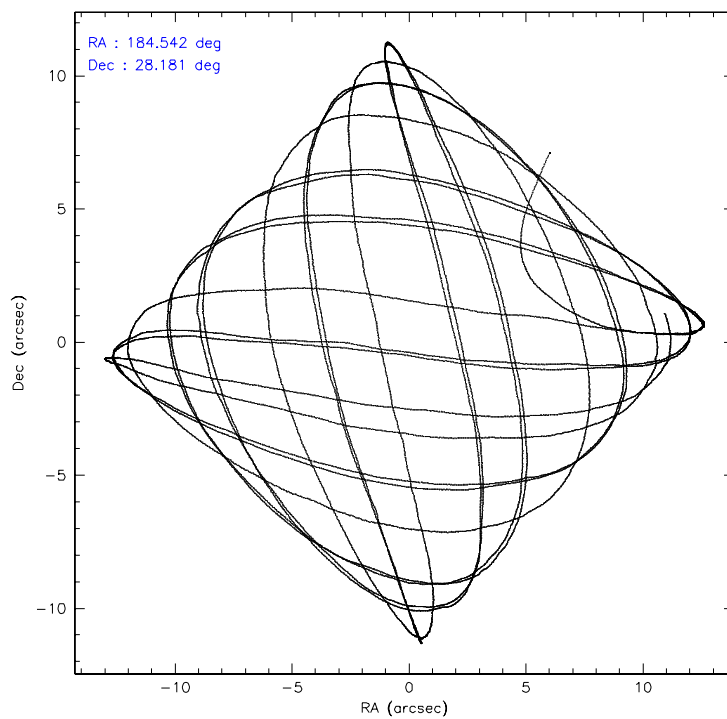
	ccd 2	ccd 3	ccd 6	ccd 7	ccd 8
level 1 events	53723	52638	55234	62003	68434
rejected events	48586	47670	49795	38022	53895
rejected %	90%	90%	90%	61%	78%

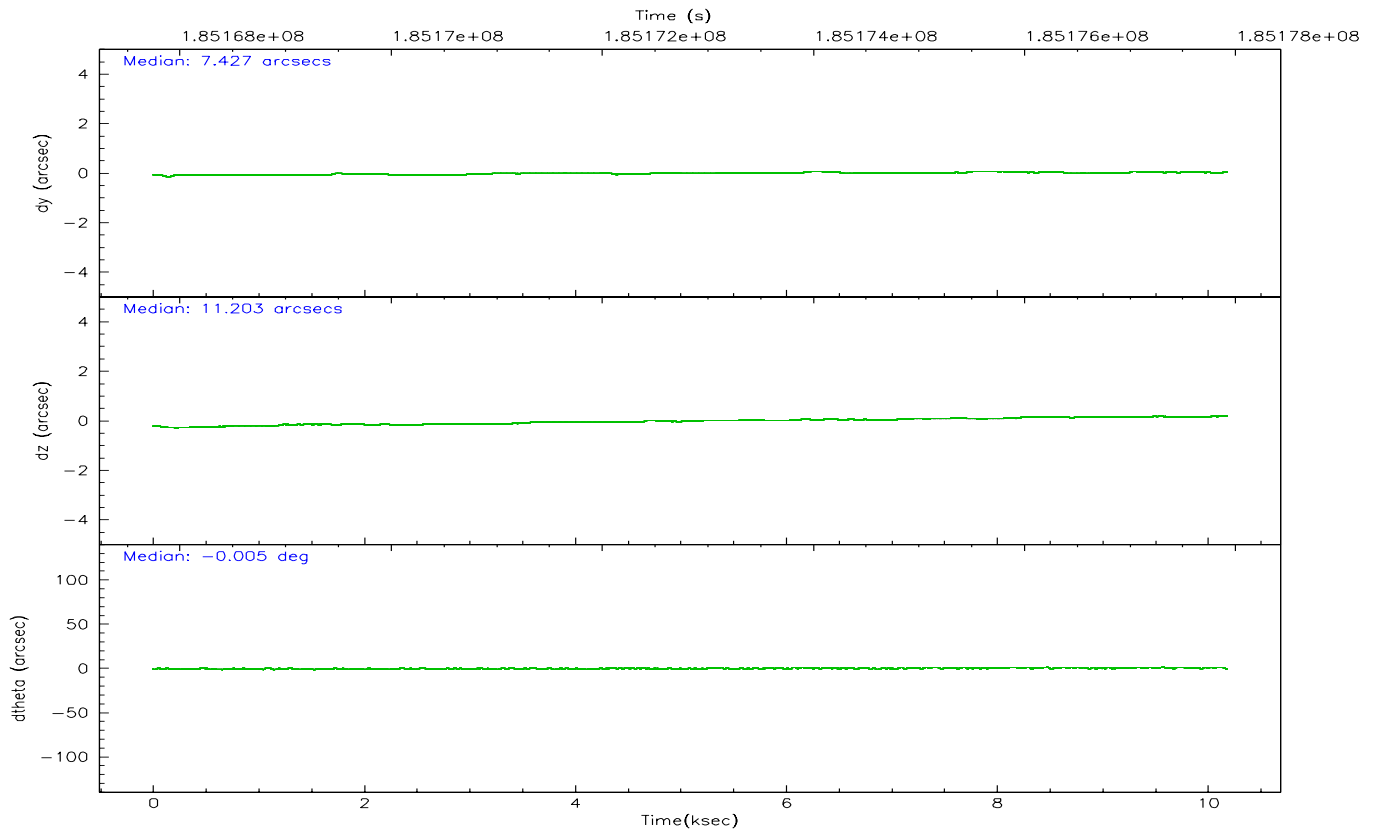
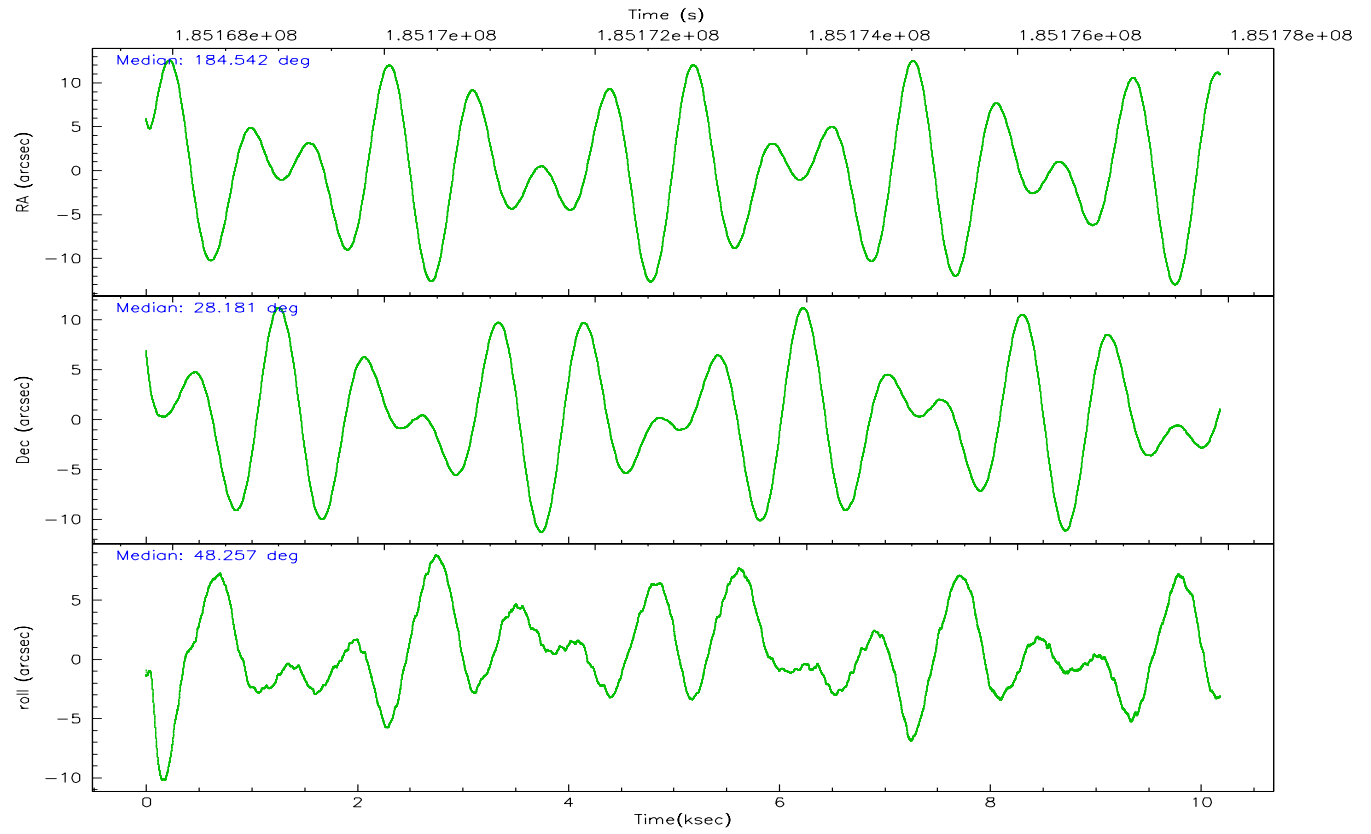
	ccd 2	ccd 3	ccd 6	ccd 7	ccd 8
grade 0 events	2184	2140	2226	2098	5144
	4%	4%	4%	3%	7%
grade 1 events	25	24	30	28	54
	0%	0%	0%	0%	0%
grade 2 events	1296	1161	1275	6749	3555
	2%	2%	2%	10%	5%
grade 3 events	641	577	653	1617	1828
	1%	1%	1%	2%	2%
grade 4 events	621	633	700	1676	1686
	1%	1%	1%	2%	2%
grade 5 events	1844	2106	2215	4762	2979
	3%	4%	4%	7%	4%
grade 6 events	1007	1085	1294	14800	4164
	1%	2%	2%	23%	6%
grade 7 events	46105	44912	46841	30273	49024
	85%	85%	84%	48%	71%

2.2 Compared Parameters

Parameter	Planned	Actual	Parameter	Planned	Actual
Instrument	ACIS	ACIS	Obspar format version number	6	6
Detector	ACIS-23678	ACIS-23678	Obspar file type	PREDICTED	ACTUAL
Grating	NONE	NONE	Obspar update status	NONE	UPDATED
Data mode	VFAINT	VFAINT	On-chip summing requested	N	N
Observation mode	POINTING	POINTING	Subarray requested	NONE	NONE
Pointing RA	184.536084	184.5419973335579	Alternating exposures requested	N	N
Pointing Dec	28.154792	28.18151651086813	Primary exposure time	0.000000	3.1
Pointing Roll	48.109432	48.26326185871293			
SIM focus pos (mm)	-0.684267	-0.6828225247311905			
SIM defocus (mm)	0	0.001444936568705701			
SIM translation stage pos (mm)	-190.132523	-190.1400660498719			
SIM translation stage offset (mm)	0	0.00754346686406393			
Observation start time	185167921.184000	185166278.49345			
Observation start date	2003-11-14T03:30:57	2003-11-14T03:04:38			
Observation end time	185177921.184000	185178395.53148			
Observation end date	2003-11-14T06:17:37	2003-11-14T06:26:35			
Read mode	TIMED	TIMED			

2.3 Aspect



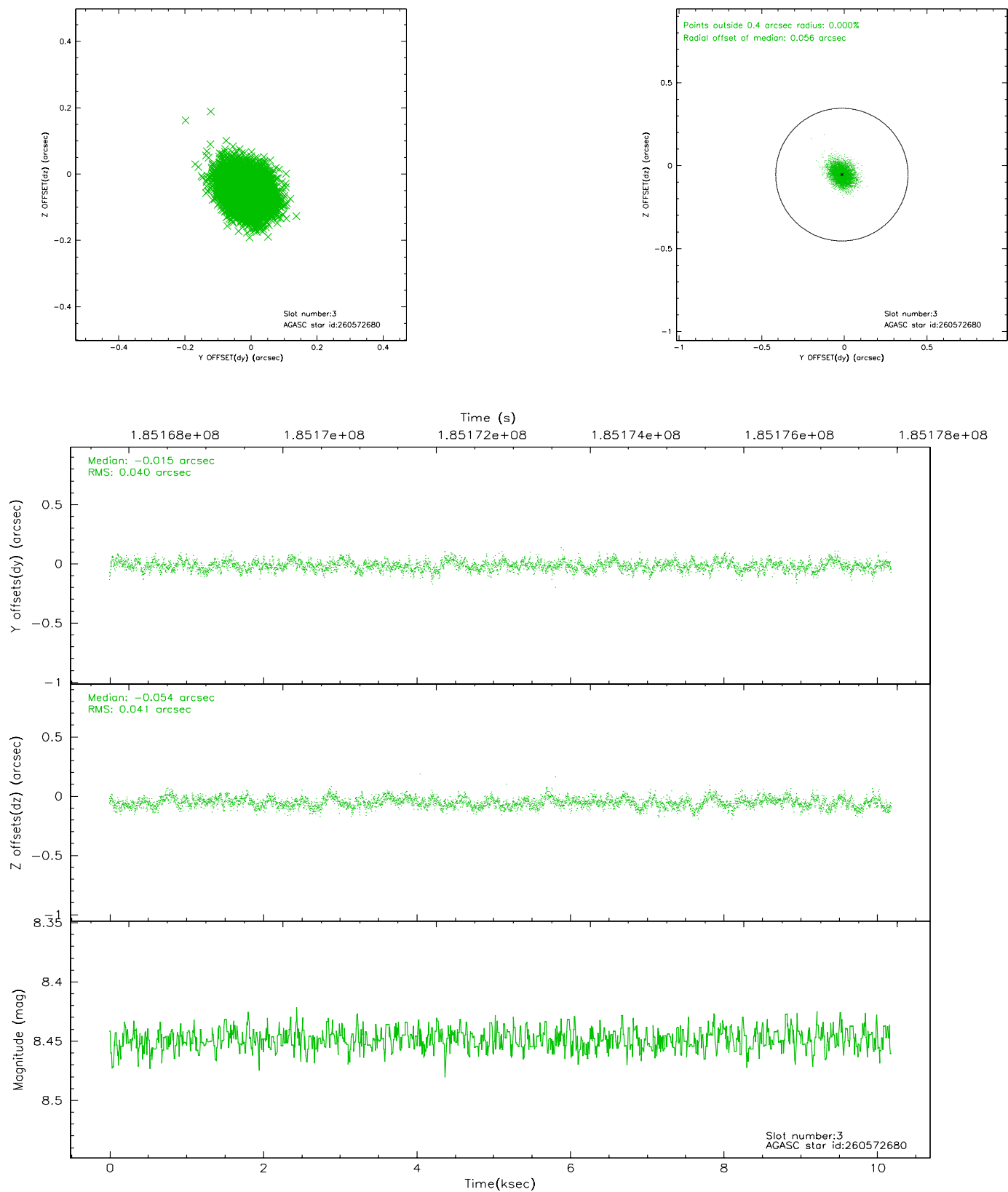


Slot Statistics

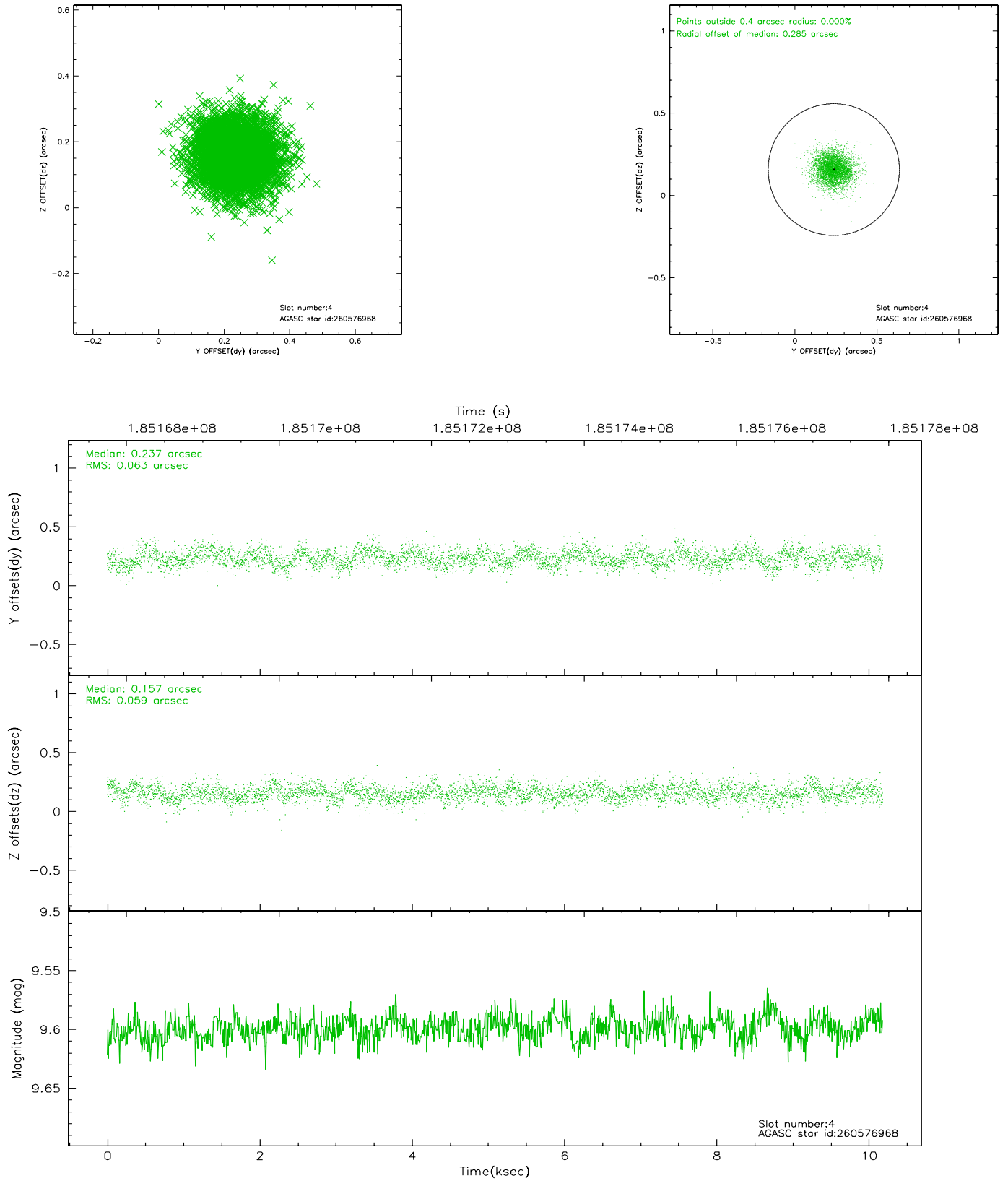
slot	status	id	mag	n_pts	med_dy	med_dz	dr1	dr2	ra	dec	mean_y	mean_z
0	FID	ACIS-S-2	7.10	2484	-0.021	0.017	0.007	0.011	0.000000	0.000000	-760.18	-1732.46
1	FID	ACIS-S-4	7.20	2484	0.011	0.005	0.005	0.009	0.000000	0.000000	2152.87	175.51
2	FID	ACIS-S-5	7.23	2484	-0.021	-0.014	0.006	0.011	0.000000	0.000000	-1812.38	169.71
3	GUIDE	260572680	8.45	4966	-0.015	-0.054	0.061	0.099	184.010427	28.048682	-1396.90	990.67
4	GUIDE	260576968	9.60	4965	0.237	0.157	0.091	0.149	184.148082	27.653037	-2169.39	-283.38
5	GUIDE	260965760	8.96	4967	0.029	0.005	0.079	0.124	184.753472	28.047993	174.28	-770.00
6	GUIDE	260969480	9.08	4969	-0.134	-0.197	0.080	0.131	184.329513	28.726397	1096.49	1860.08
7	GUIDE	260973208	7.02	4968	-0.115	0.091	0.066	0.102	184.960936	28.464352	1729.26	-254.37

2.4 Star Slots

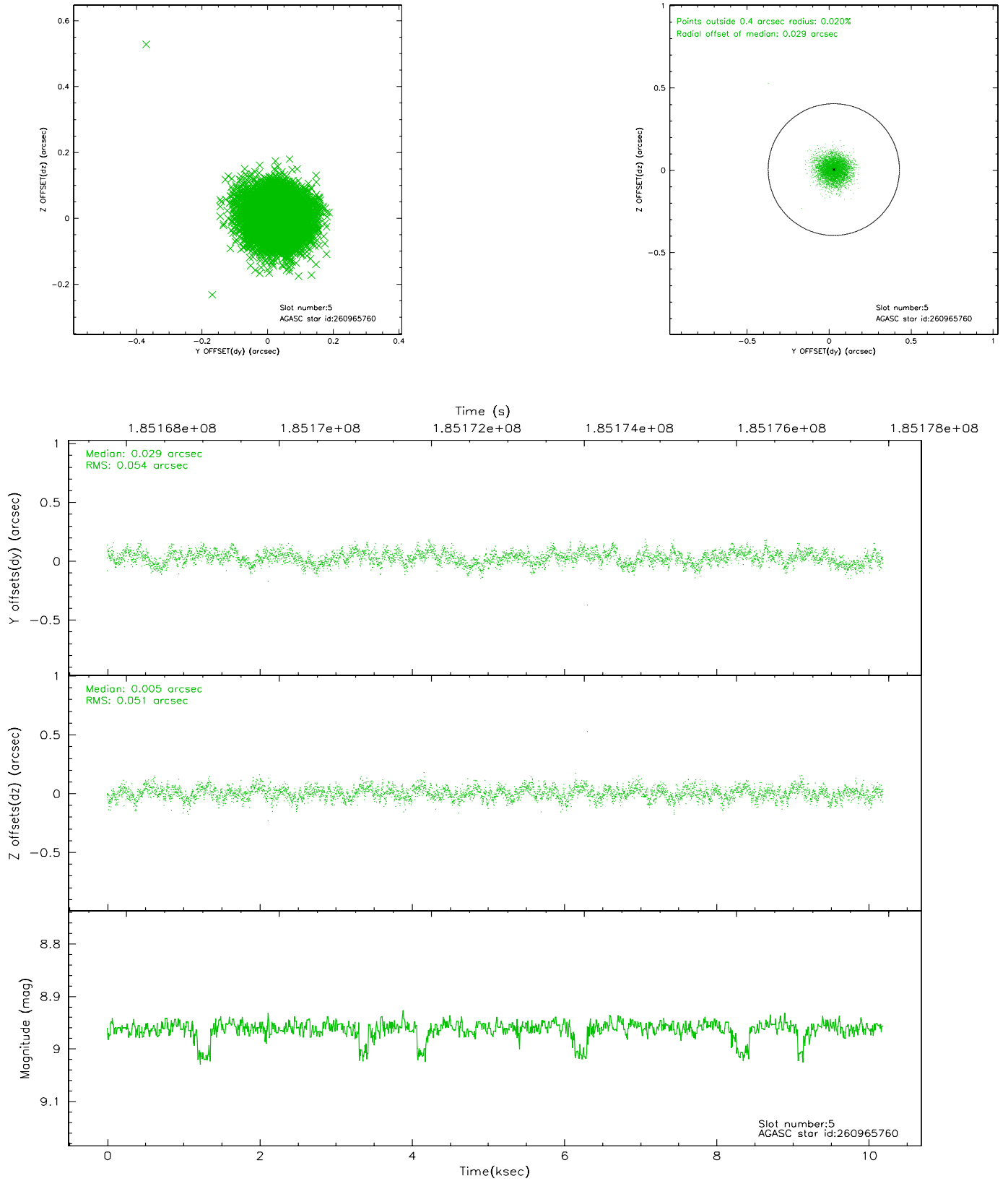
2.4.1 Slot 3



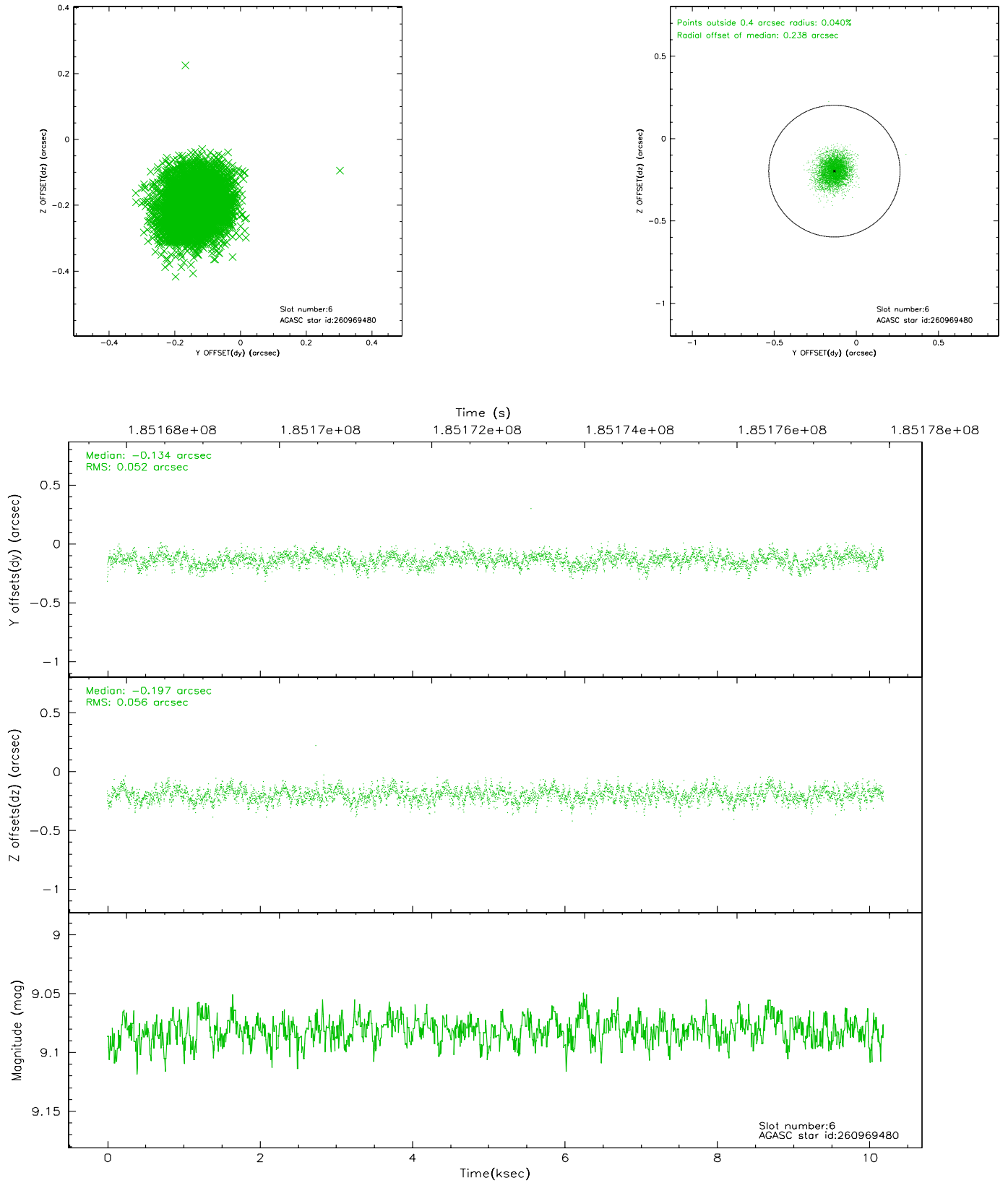
2.4.2 Slot 4



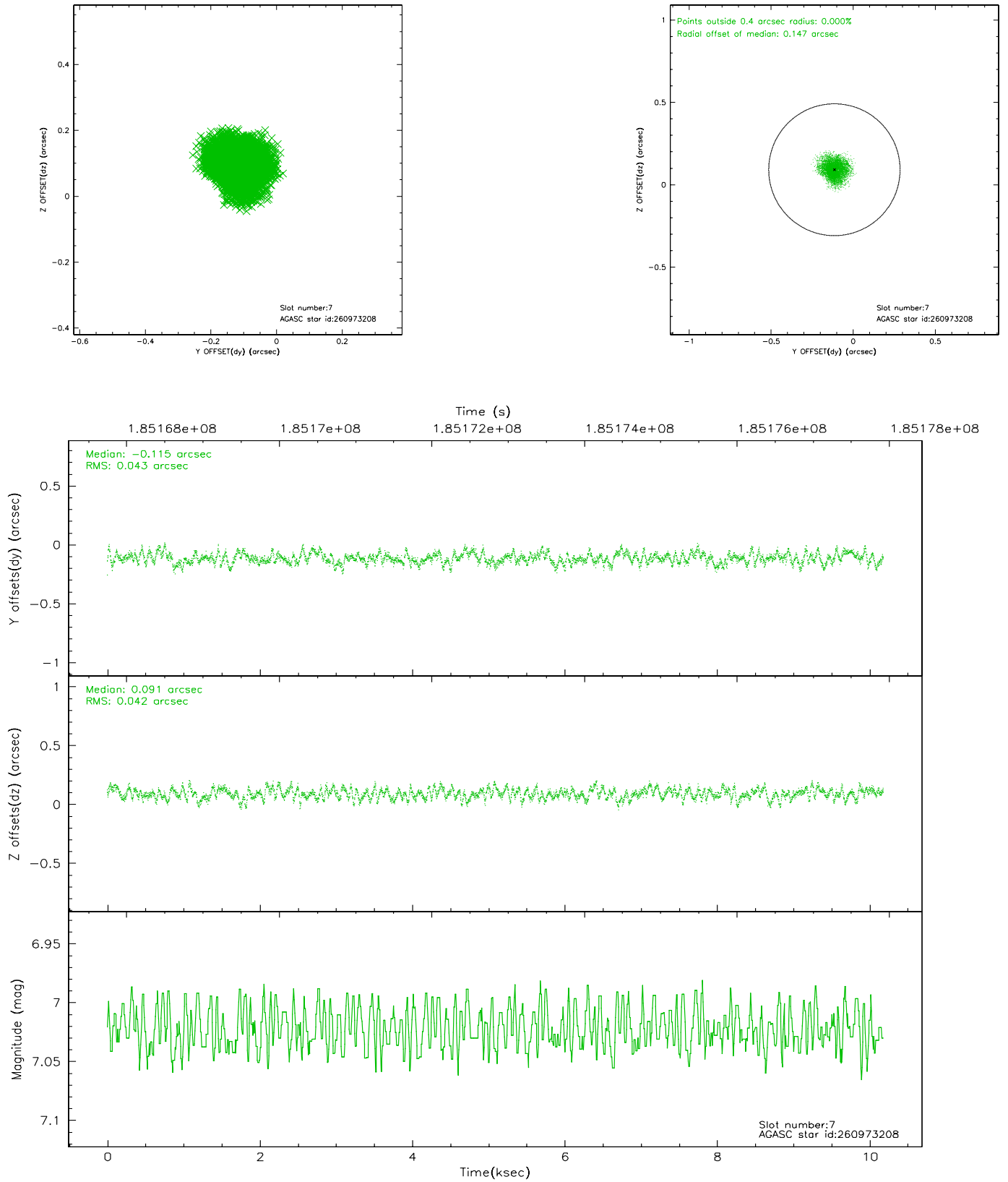
2.4.3 Slot 5



2.4.4 Slot 6

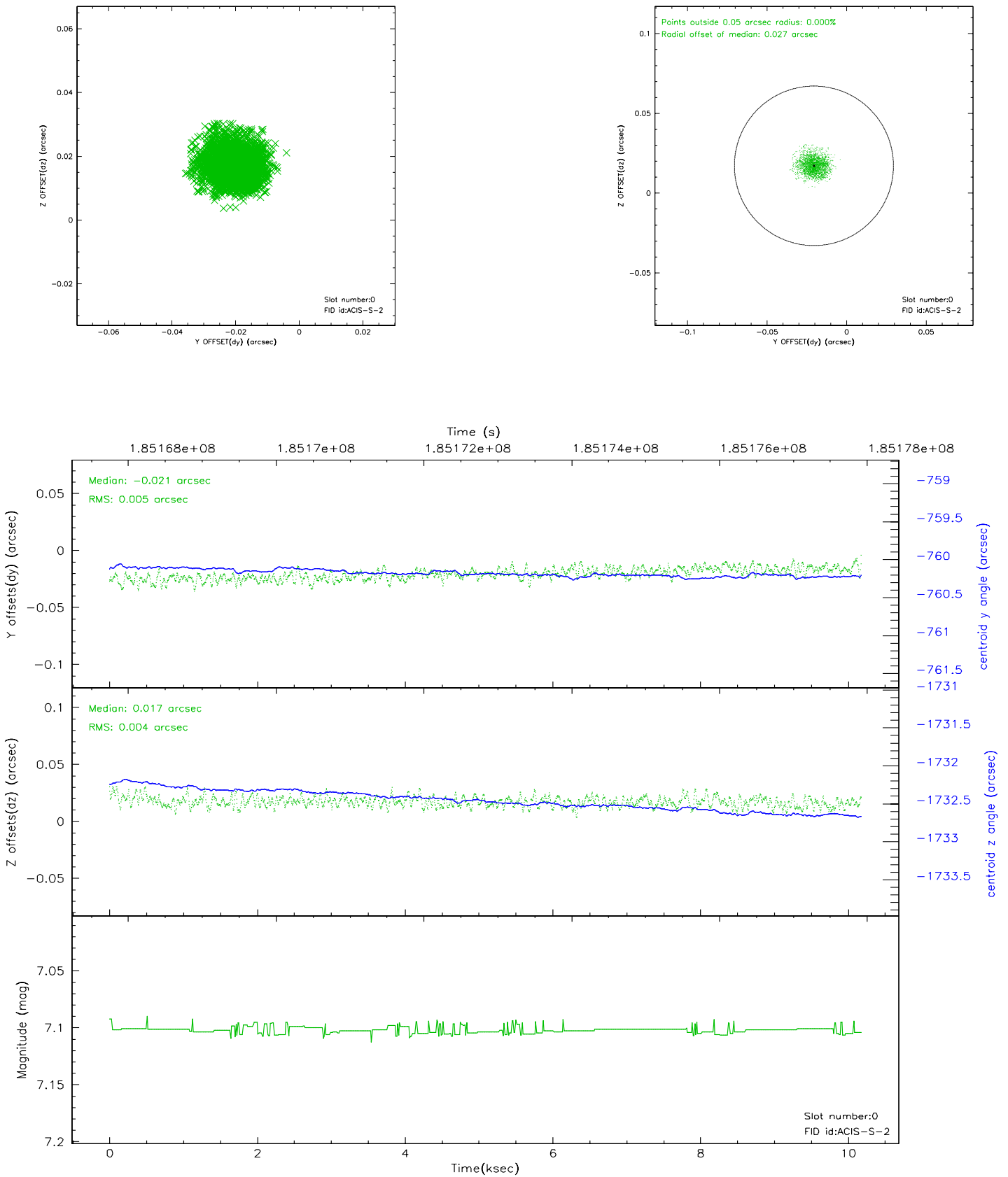


2.4.5 Slot 7

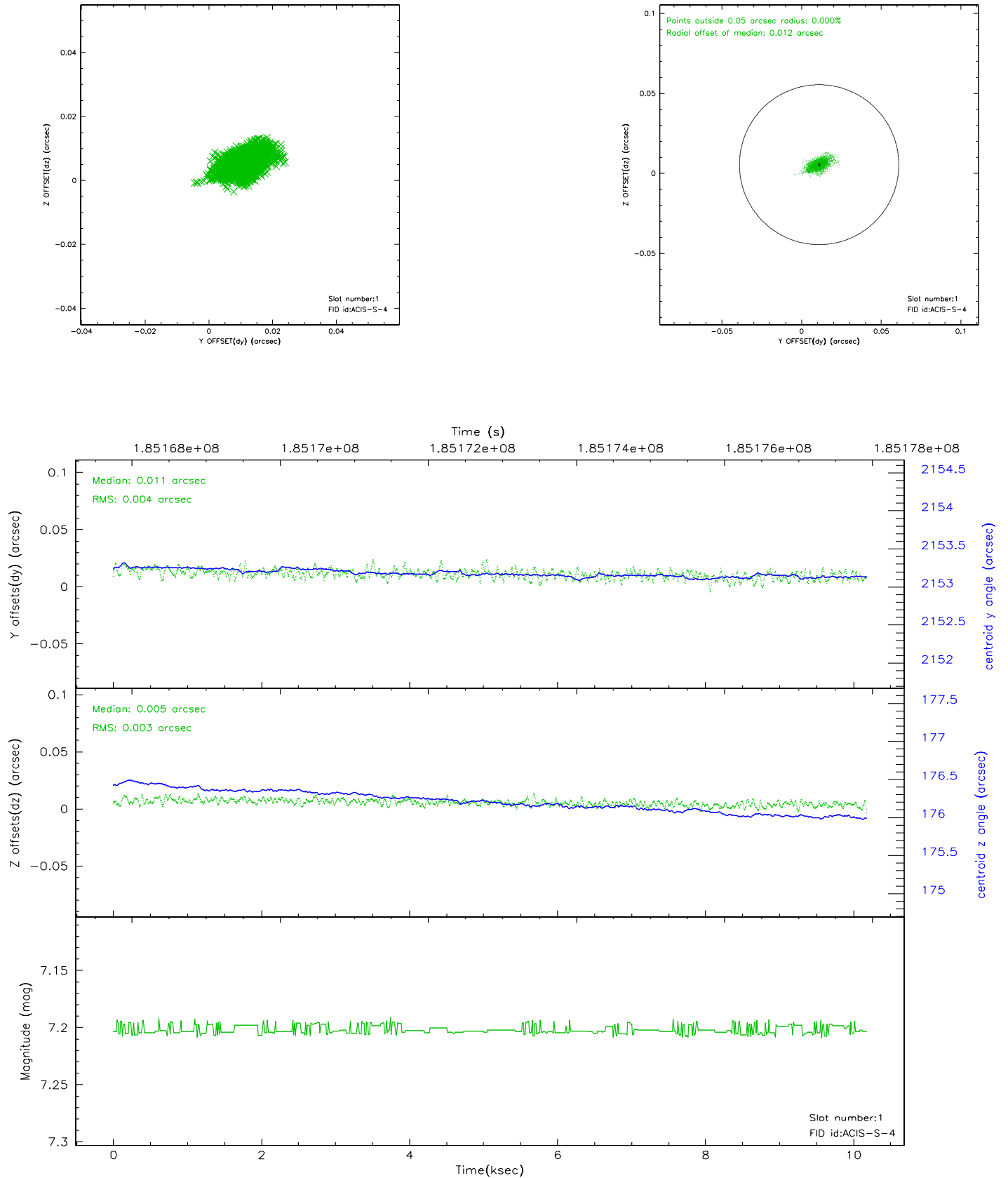


2.5 FID Slots

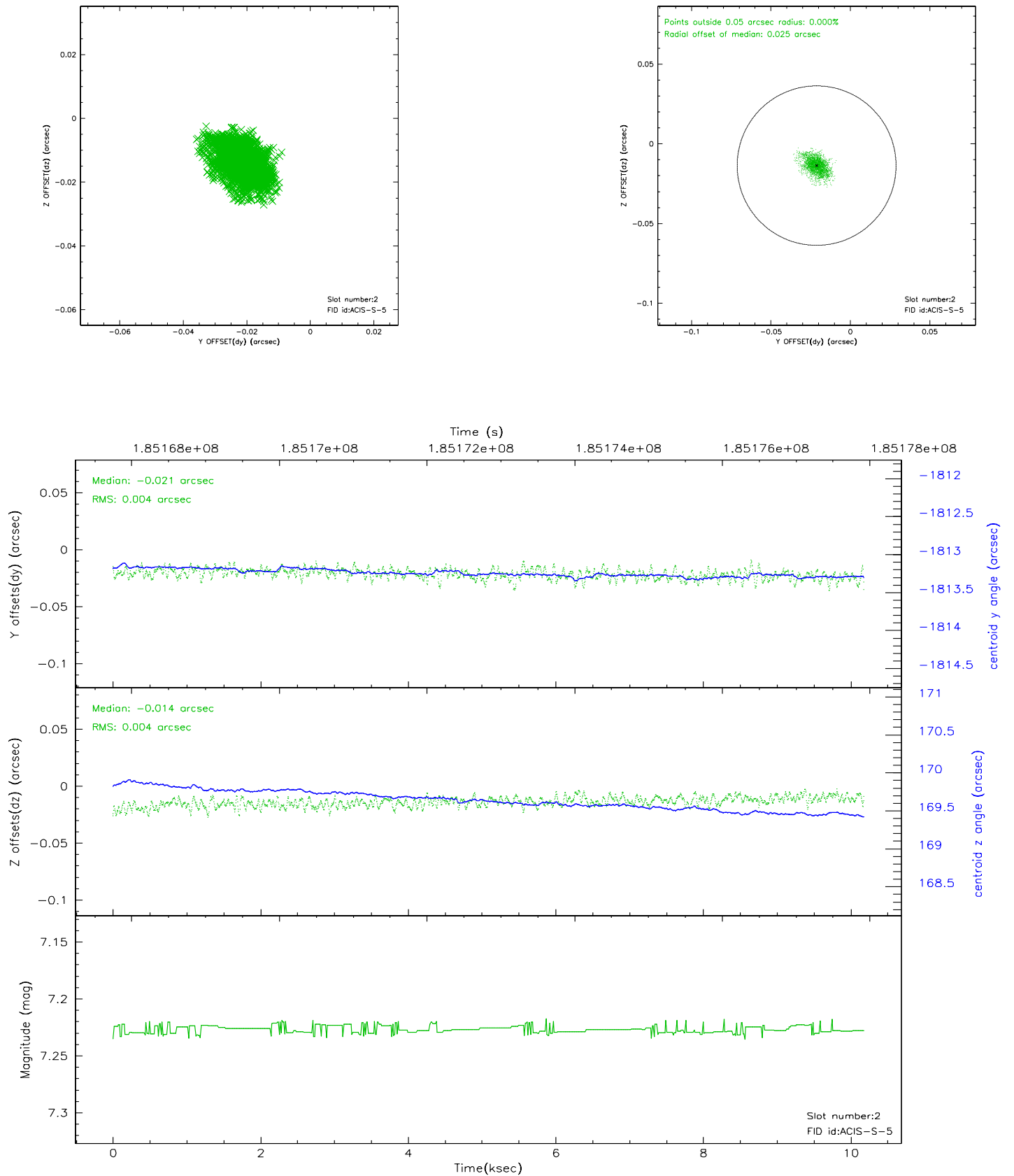
2.5.1 Slot 0



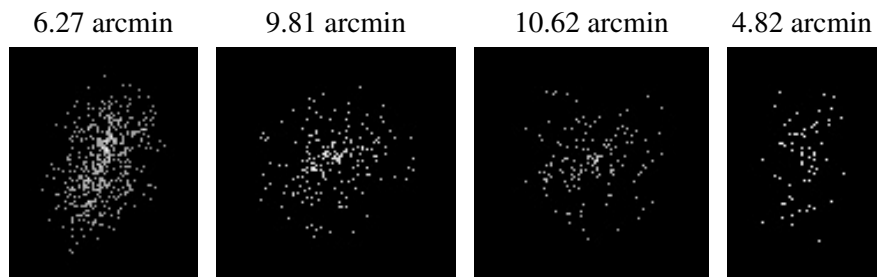
2.5.2 Slot 1



2.5.3 Slot 2



3 Point Sources



A Summary

A.1 Status

V&V Scientist	Beth Sundheim
V&V Date (YYYY-MM-DD)	2006.06.30
V&V Edition	1
V&V Disposition and Status	OK
V&V Charge Time	10.177

A.2 Comments