

V&V Reference Report

L2 ASCDS Version : 7.6.7.1

Observation 4676 - L2 Version 001
Chandra X-Ray Center

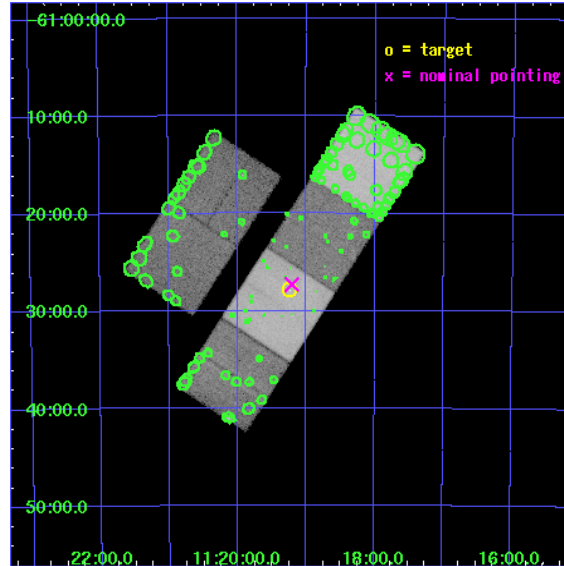
L2 Processing Date : Apr 13 2006

Contents

1	Front	2
2	OBI	3
2.1	OBI	3
2.1.1	Images	3
2.1.2	Bias	3
2.1.3	Parameters	4
2.1.4	Events	4
2.2	Compared Parameters	5
2.3	Aspect	6
2.4	Star Slots	9
2.4.1	Slot 3	9
2.4.2	Slot 4	10
2.4.3	Slot 5	11
2.4.4	Slot 6	12
2.4.5	Slot 7	13
2.5	FID Slots	14
2.5.1	Slot 0	14
2.5.2	Slot 1	15
2.5.3	Slot 2	16
3	Point Sources	17
A	Summary	18
A.1	Status	18
A.2	Comments	18

1 Front

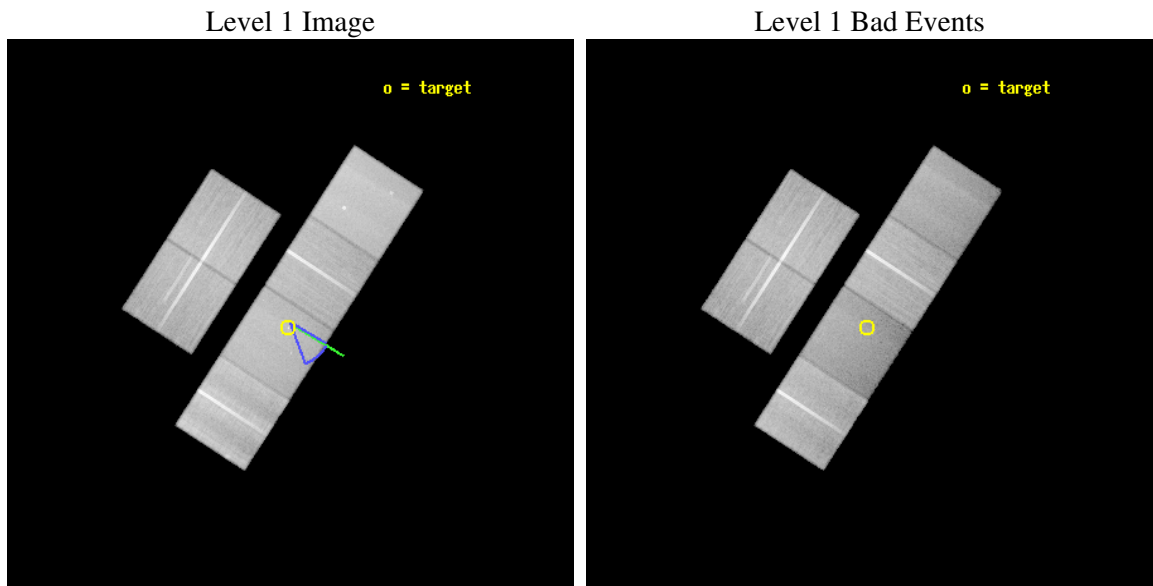
seq_num	500495
obs_id	4676
title	Probing the X-ray emission from the high-magnetic field radio pulsar PSR J1119-6127 associated with SNR G292.2-0.5
observer	Prof. Samar Safi-Harb
object	PSR J1119-6127
dtcycle	0
cycle	P
ra_targ	169.81
dec_targ	-61.463806
ra_nom	169.80217042707
dec_nom	-61.454906237266
roll_nom	122.94974799047
revision	2
ontime	61315.199771583
livetime	60538.789792494
ontime2	61305.476860821
ontime3	61308.717850983
ontime5	61315.199771583
ontime6	61315.199771583
ontime7	61315.199771583
ontime8	61315.199771583
l2events	597284



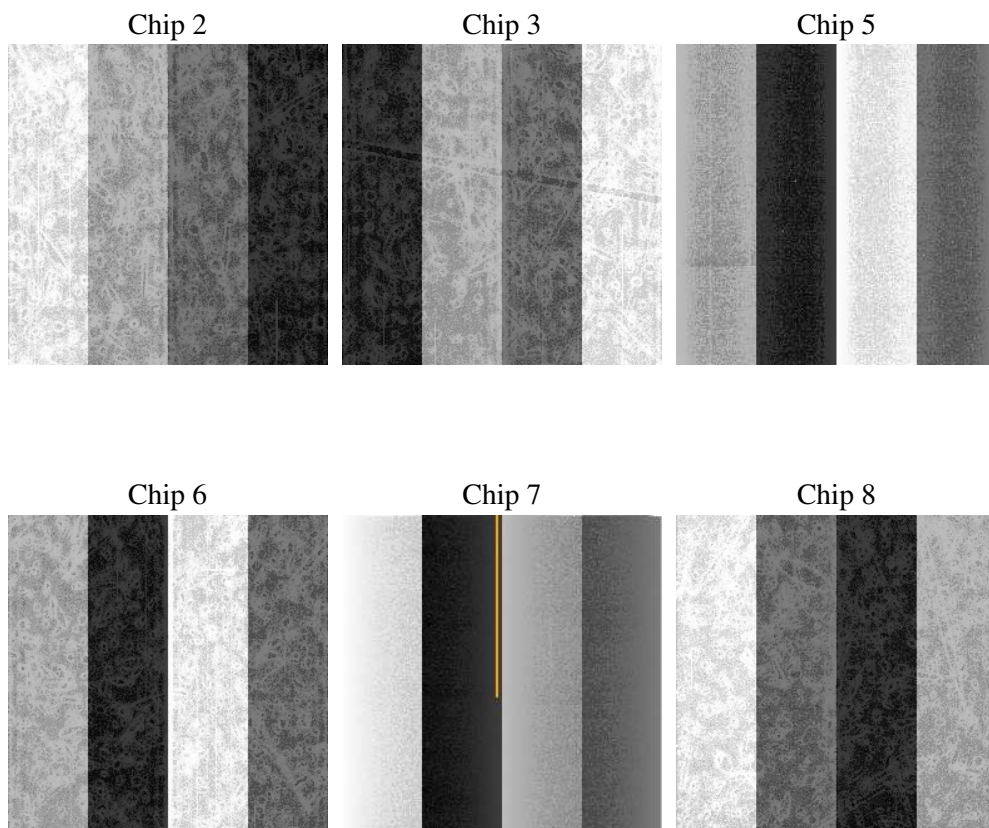
2 OBI

2.1 OBI

2.1.1 Images



2.1.2 Bias



2.1.3 Parameters

obi_num	1
ascdsver	7.6.7.1
caldsver	3.2.1
date	2006-04-13T13:36:29
revision	2

sched_exp_time	61183.728000
ontime	61880.427253842
ontime2	61870.704323173
ontime3	61873.945333242
ontime5	61880.427253842
ontime6	61880.427233934
ontime7	61880.427253842
ontime8	61880.427233934
l1events	2586851

2.1.4 Events

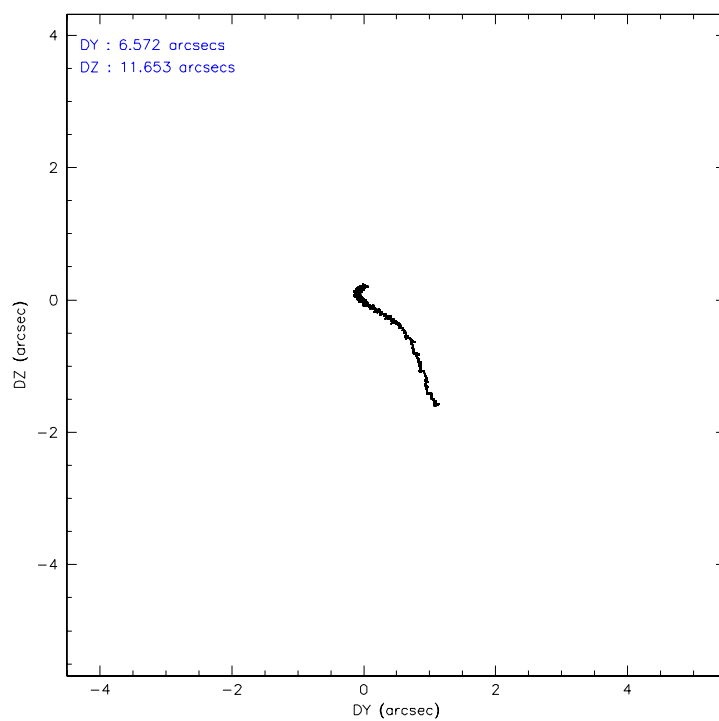
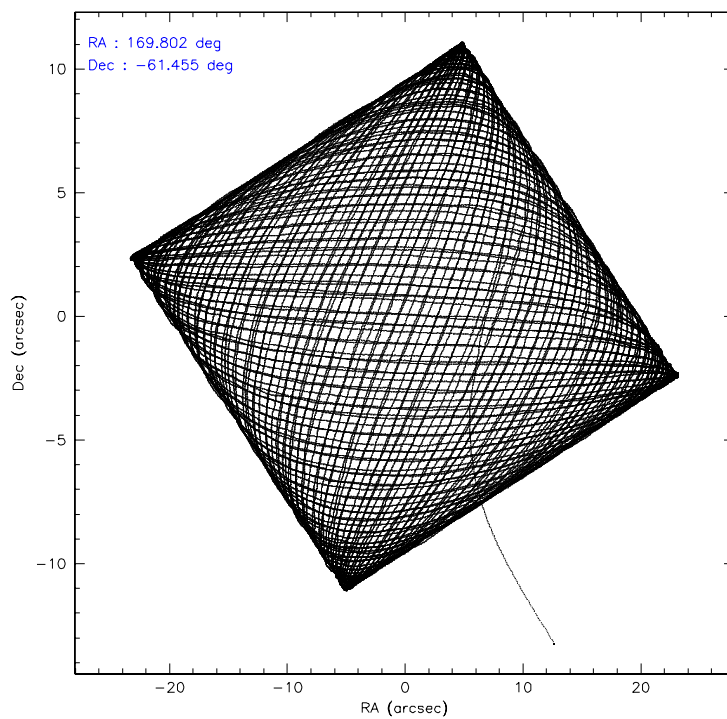
	ccd 2	ccd 3	ccd 5	ccd 6	ccd 7	ccd 8
level 1 events	429598	389376	478688	408058	396691	484440
rejected events	385678	348112	234878	352850	203761	361892
rejected %	89%	89%	49%	86%	51%	74%

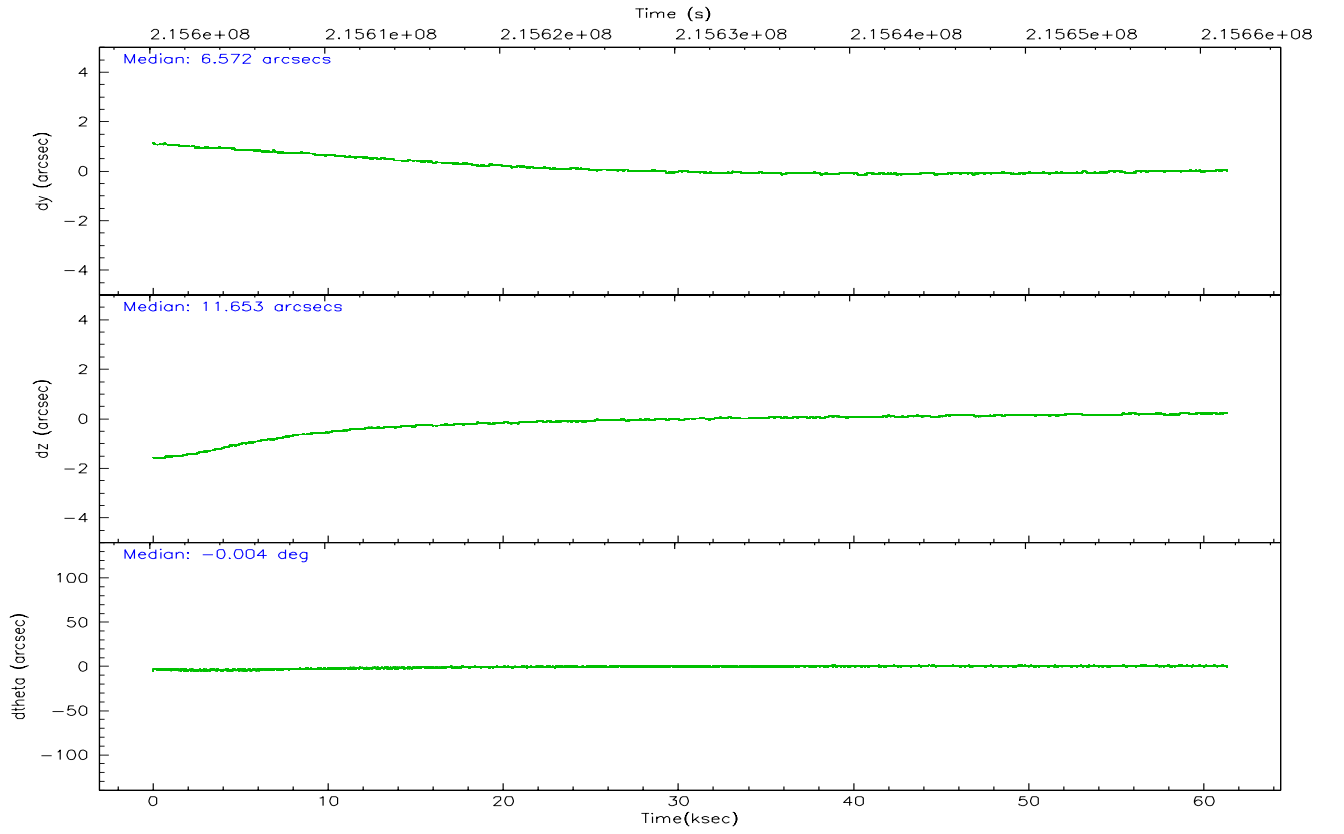
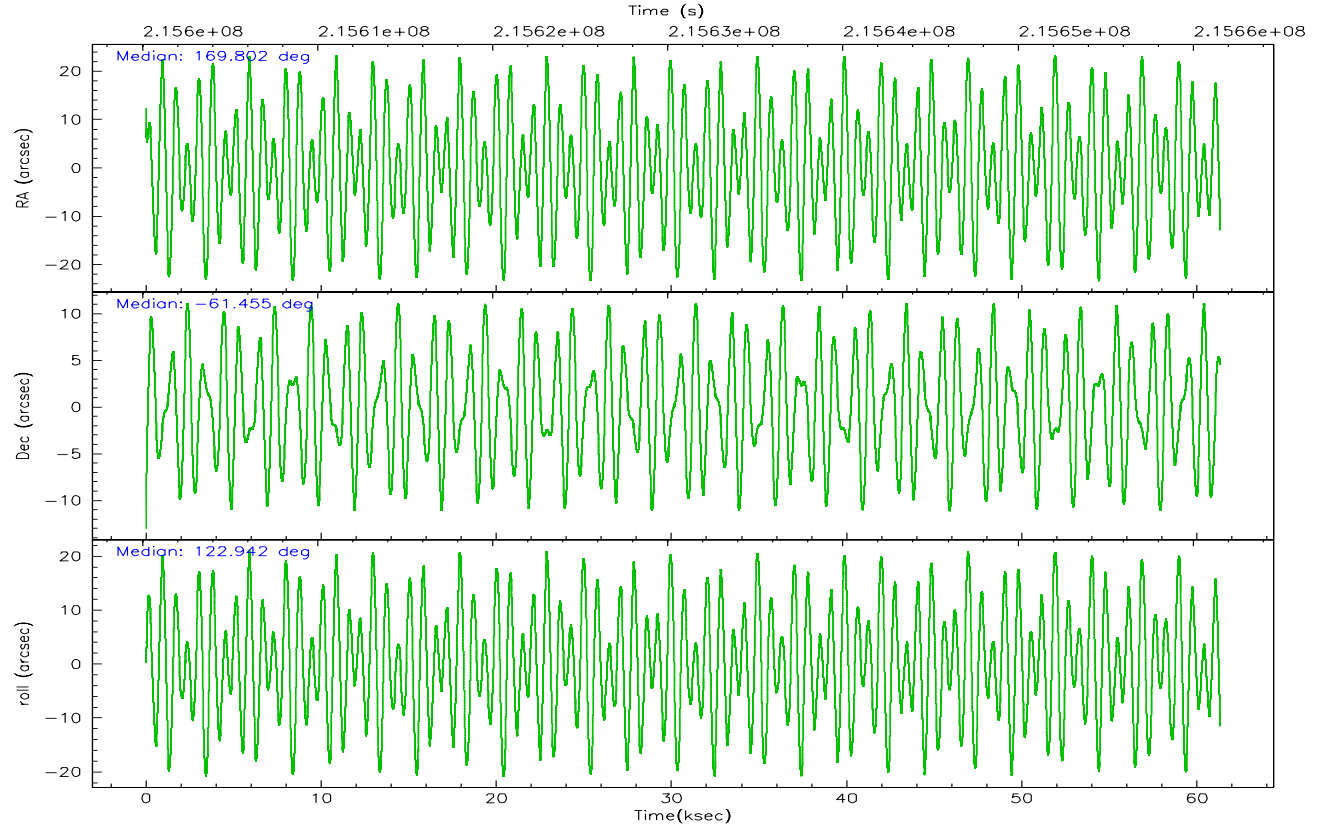
	ccd 2	ccd 3	ccd 5	ccd 6	ccd 7	ccd 8
grade 0 events	18332	17371	13639	26725	14609	35103
	4%	4%	2%	6%	3%	7%
grade 1 events	263	231	156	229	221	371
	0%	0%	0%	0%	0%	0%
grade 2 events	10078	8317	78360	10330	46738	27624
	2%	2%	16%	2%	11%	5%
grade 3 events	4335	4453	5843	5016	11384	15037
	1%	1%	1%	1%	2%	3%
grade 4 events	4410	4350	5605	4947	11257	13640
	1%	1%	1%	1%	2%	2%
grade 5 events	11219	12731	26740	13193	29855	19717
	2%	3%	5%	3%	7%	4%
grade 6 events	7140	7138	142393	8621	110456	32289
	1%	1%	29%	2%	27%	6%
grade 7 events	373821	334785	205952	338997	172171	340659
	87%	85%	43%	83%	43%	70%

2.2 Compared Parameters

Parameter	Planned	Actual	Parameter	Planned	Actual
Instrument	ACIS	ACIS	Obspar format version number	6	6
Detector	ACIS-235678	ACIS-235678	Obspar file type	PREDICTED	ACTUAL
Grating	NONE	NONE	Obspar update status	NONE	UPDATED
Data mode	VFAINT	VFAINT	On-chip summing requested	N	N
Observation mode	POINTING	POINTING	Subarray requested	NONE	NONE
Pointing RA	169.853254	169.802170427071	Alternating exposures requested	N	N
Pointing Dec	-61.466930	-61.45490623726587	Primary exposure time	0.000000	3.2
Pointing Roll	122.837997	122.9497479904731			
Roll angle	140.000000	140.000000			
Roll tolerance	20.000000	20.000000			
Roll constraint allows 180D rotation	N	N			
SIM focus pos (mm)	-0.684267	-0.6828225247311905			
SIM defocus (mm)	0	0.001444936568705701			
SIM translation stage pos (mm)	-190.132523	-190.1425803651734			
SIM translation stage offset (mm)	0	0.01005778216563158			
Observation start time	215600351.184000	215599022.86014			
Observation start date	2004-10-31T08:58:07	2004-10-31T08:37:02			
Observation end time	215661534.184000	215661759.01295			
Observation end date	2004-11-01T01:57:50	2004-11-01T02:02:39			
Read mode	TIMED	TIMED			

2.3 Aspect



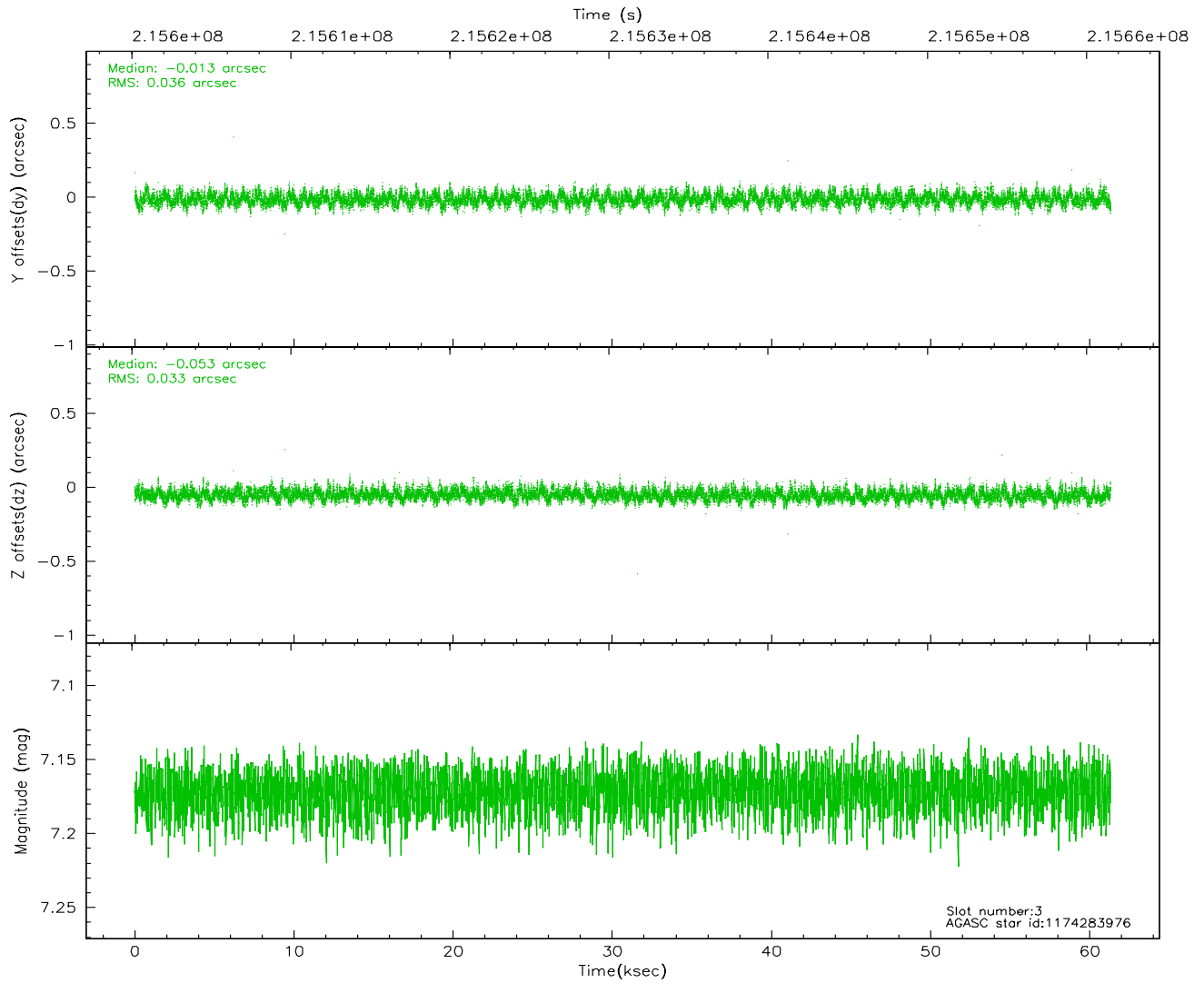
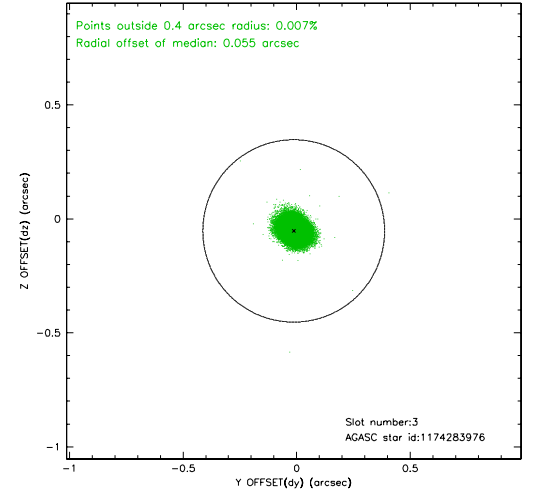
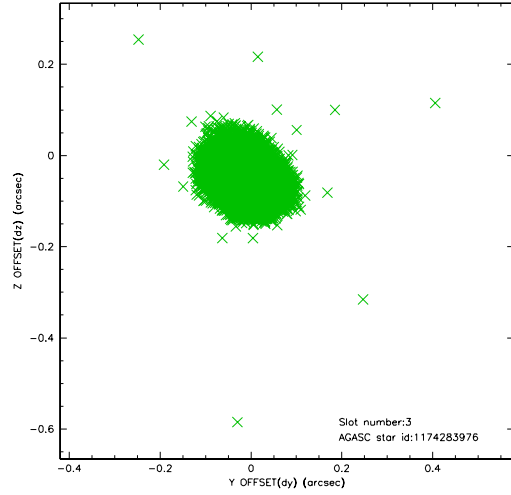


Slot Statistics

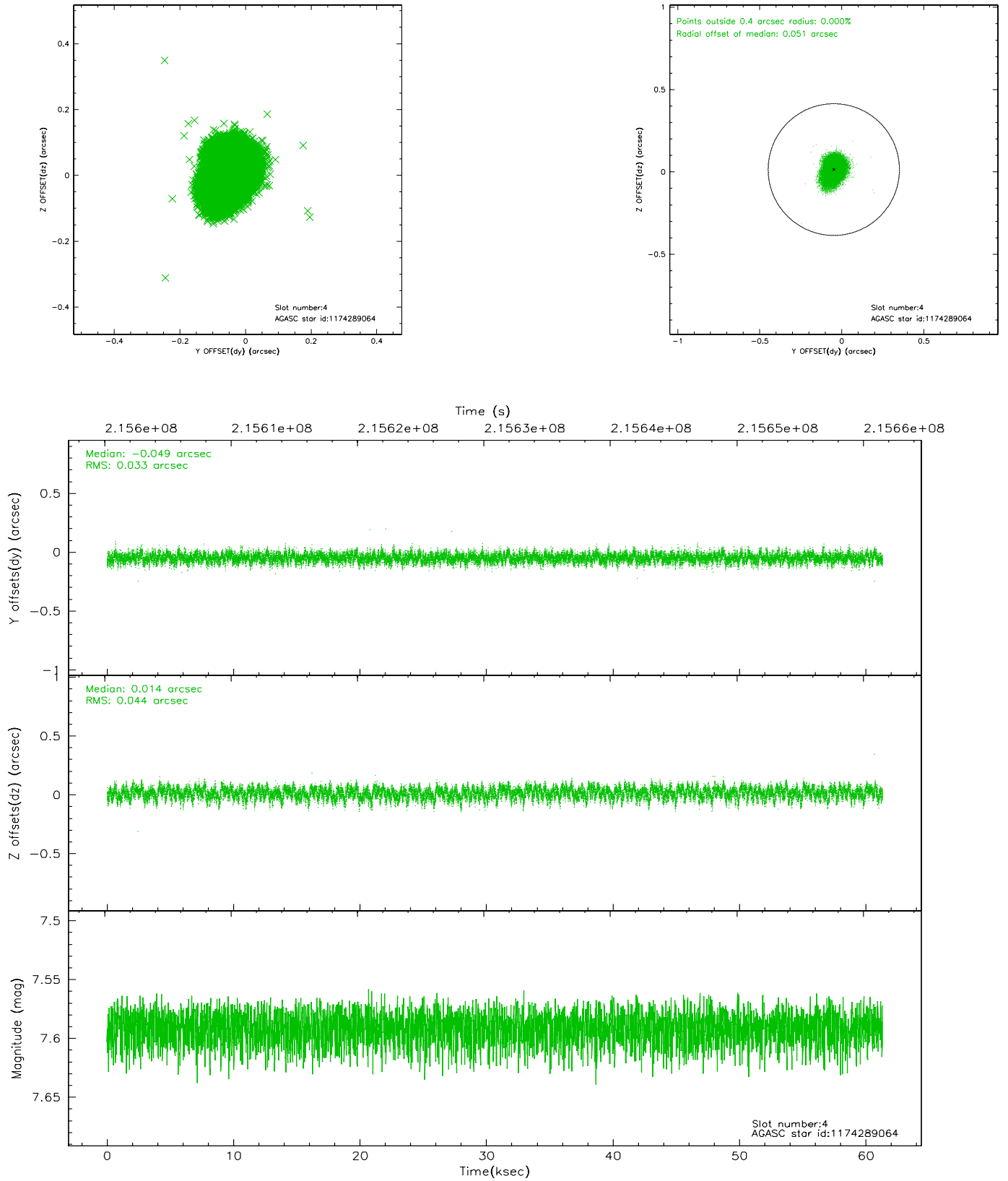
slot	status	id	mag	n_pts	med_dy	med_dz	dr1	dr2	ra	dec	mean_y	mean_z
0	FID	ACIS-S-2	7.10	14956	-0.037	-0.005	0.012	0.019	0.000000	0.000000	-759.53	-1732.72
1	FID	ACIS-S-4	7.20	14956	0.039	0.020	0.013	0.031	0.000000	0.000000	2153.83	175.85
2	FID	ACIS-S-5	7.23	14955	-0.033	-0.006	0.013	0.025	0.000000	0.000000	-1812.44	169.42
3	GUIDE	1174283976	7.17	29911	-0.013	-0.053	0.052	0.083	170.390254	-61.226219	221.14	-1249.29
4	GUIDE	1174289064	7.59	29912	-0.049	0.014	0.059	0.096	169.403245	-61.635432	-94.44	977.14
5	GUIDE	1174290744	8.19	29903	0.010	0.048	0.062	0.098	171.197974	-61.558775	-1547.41	-1744.84
6	GUIDE	1174294448	8.41	29900	0.012	0.026	0.061	0.101	169.819774	-60.897022	1756.02	-1062.96
7	GUIDE	1174808080	8.72	29825	0.041	-0.035	0.063	0.102	169.528961	-61.918631	-1069.22	1344.22

2.4 Star Slots

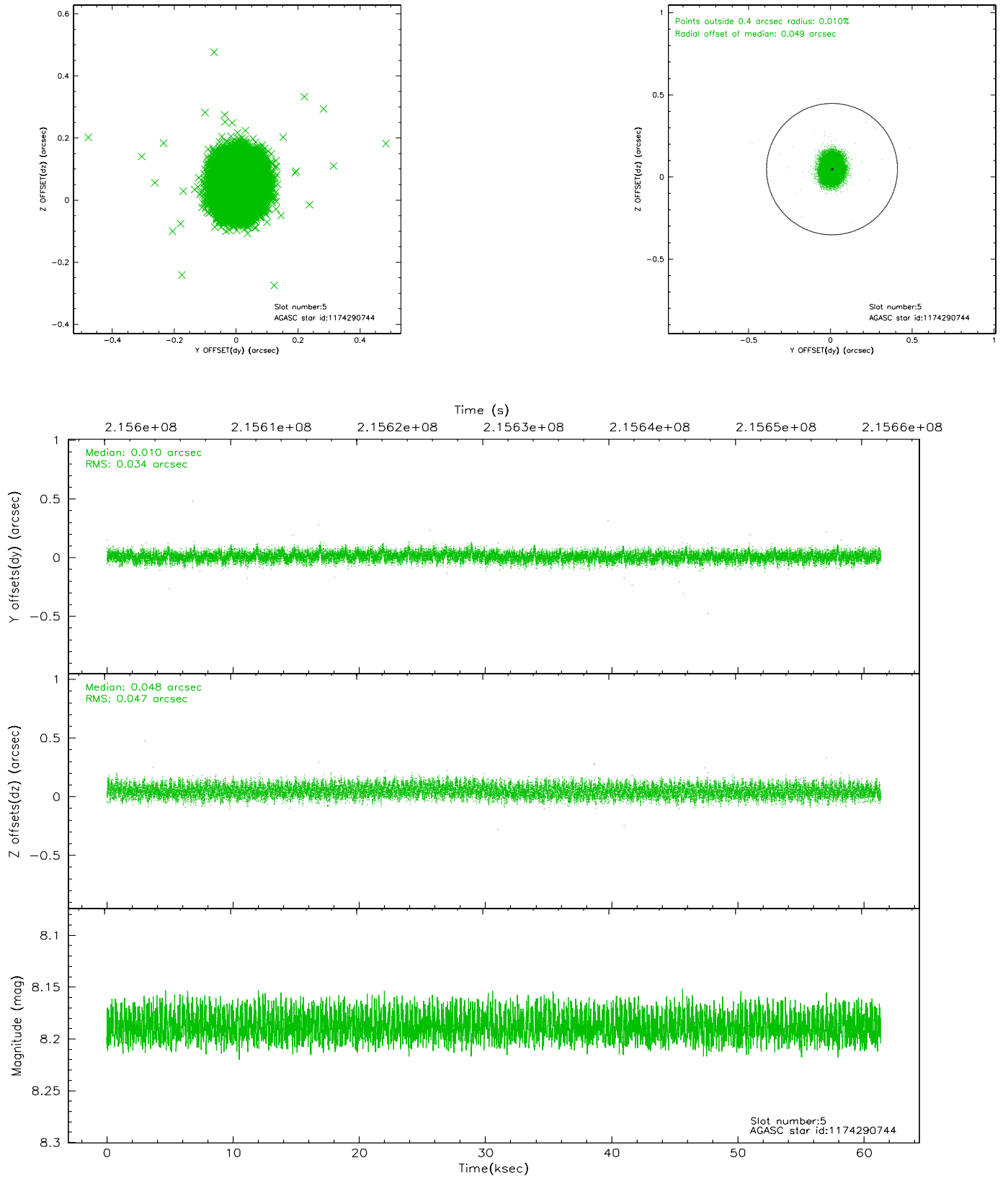
2.4.1 Slot 3



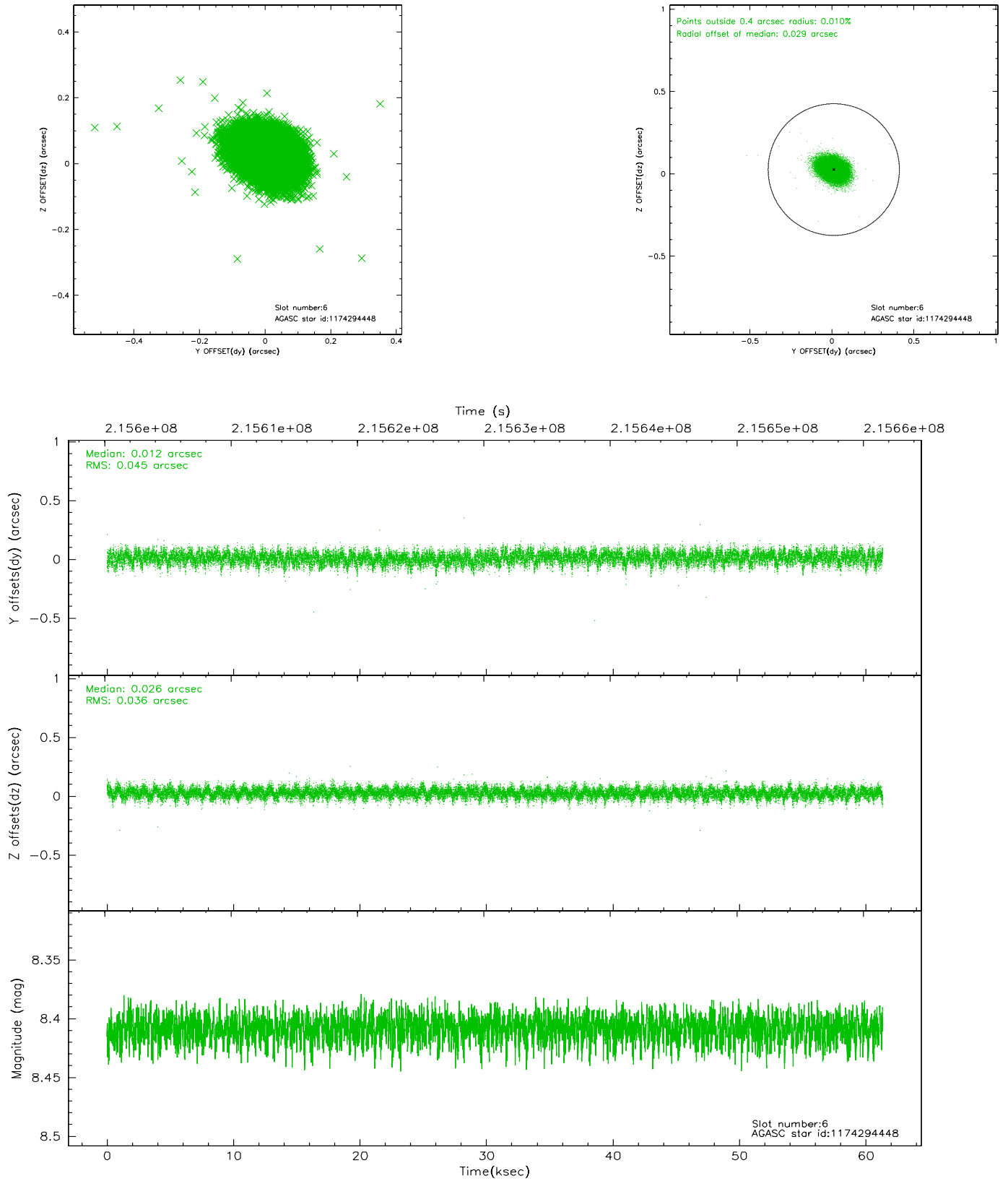
2.4.2 Slot 4



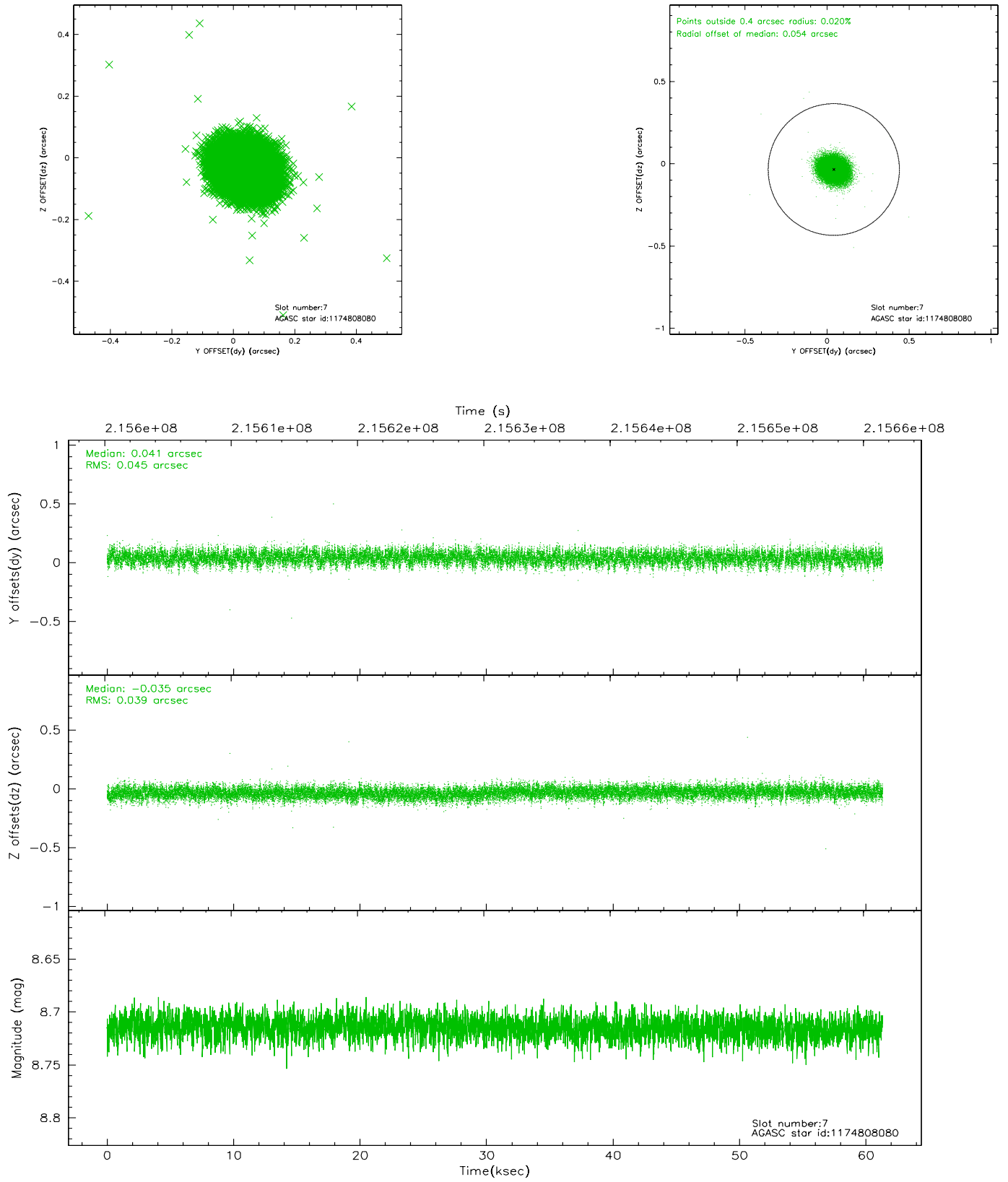
2.4.3 Slot 5



2.4.4 Slot 6

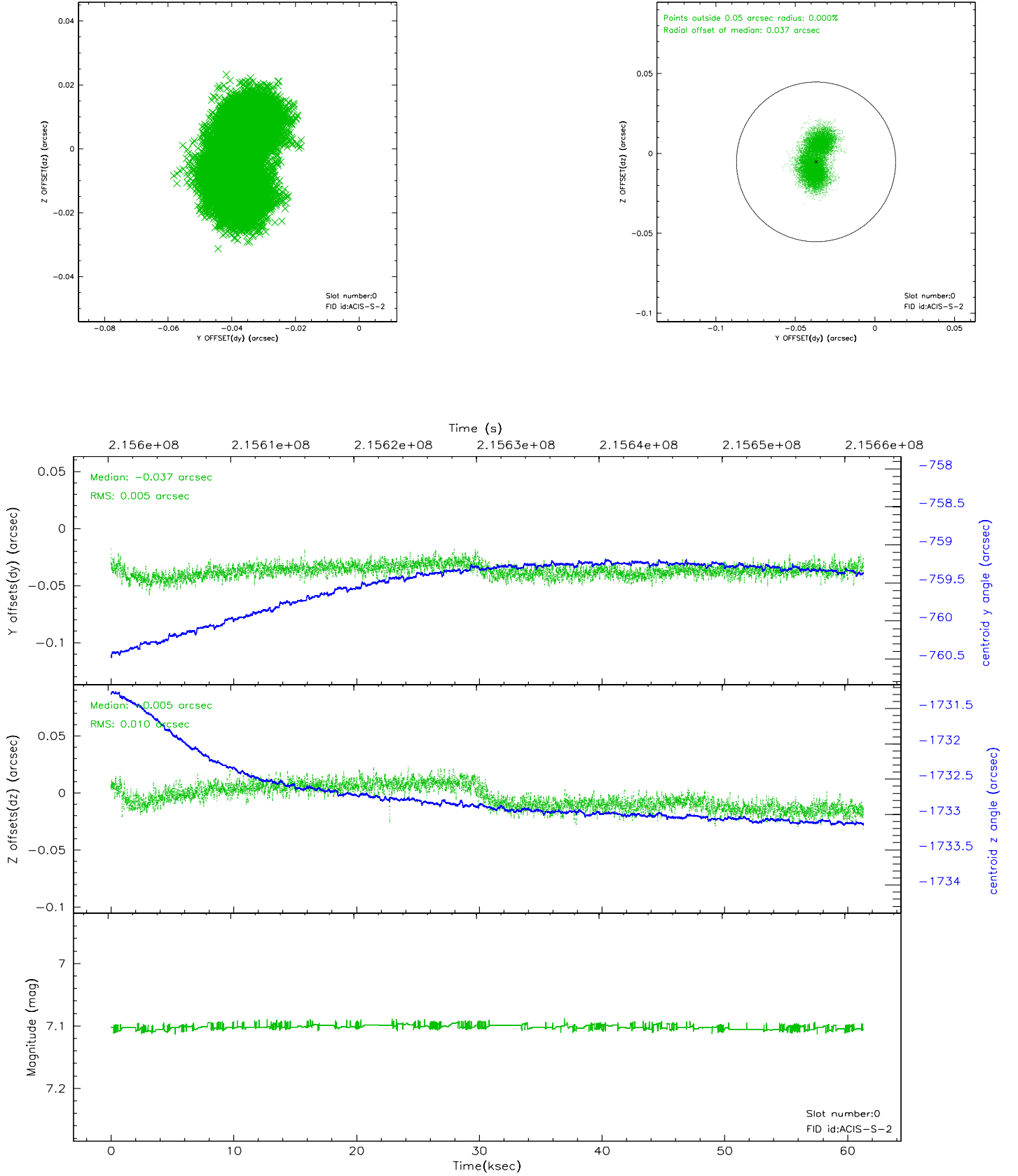


2.4.5 Slot 7

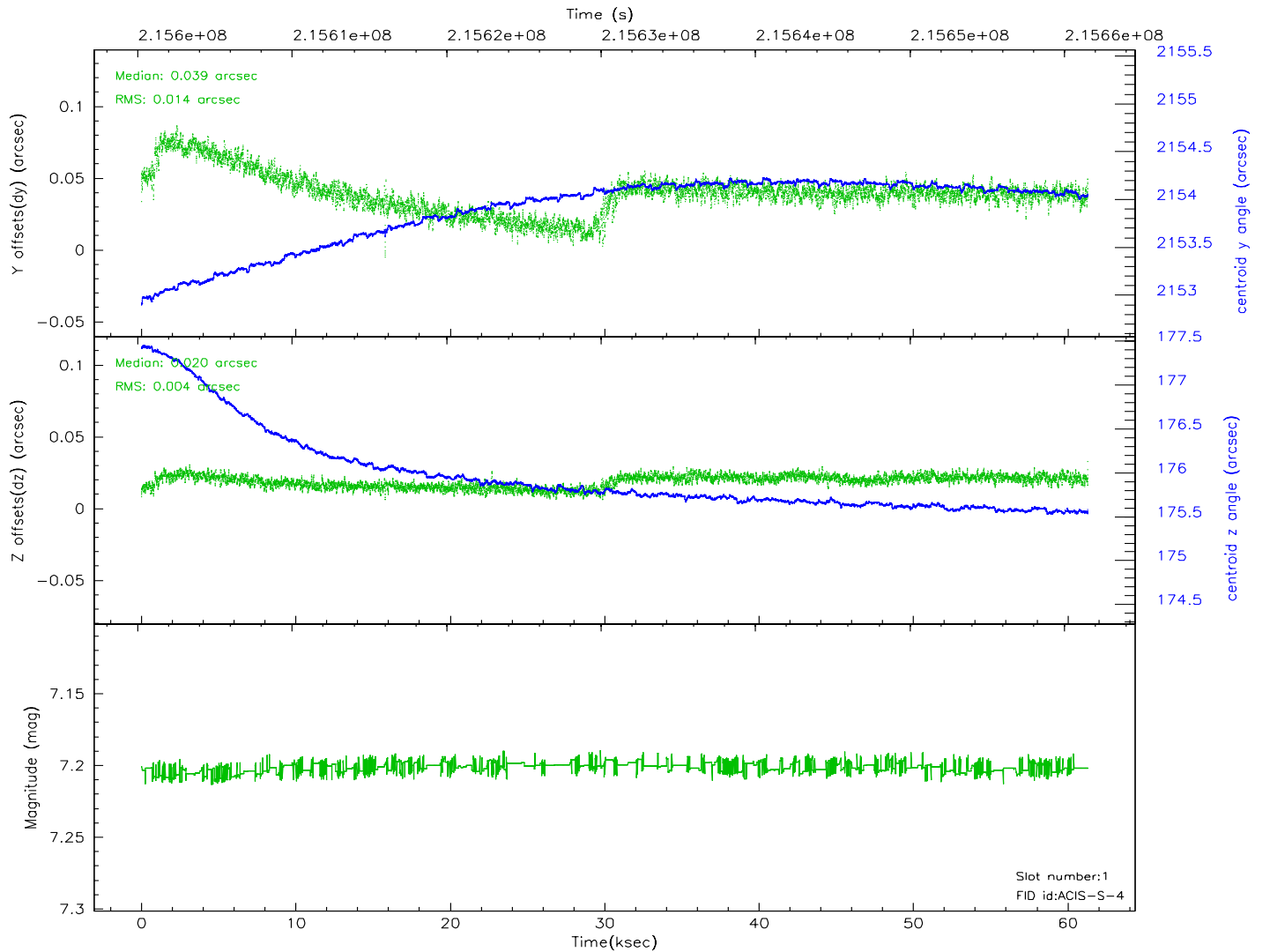
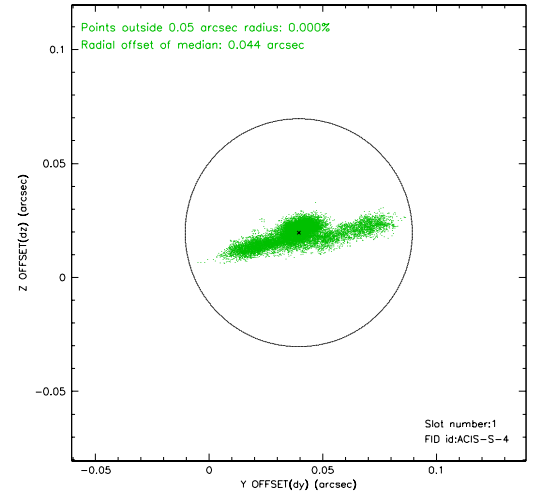
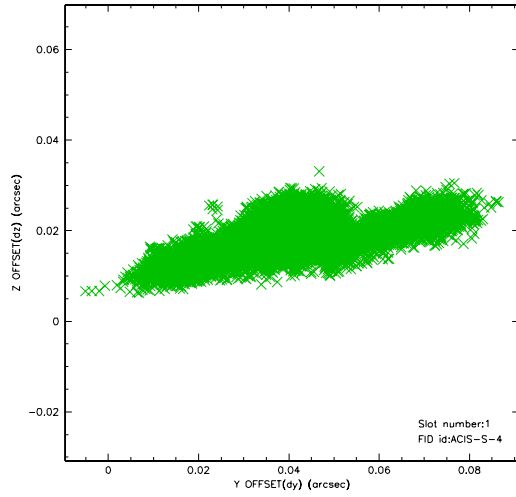


2.5 FID Slots

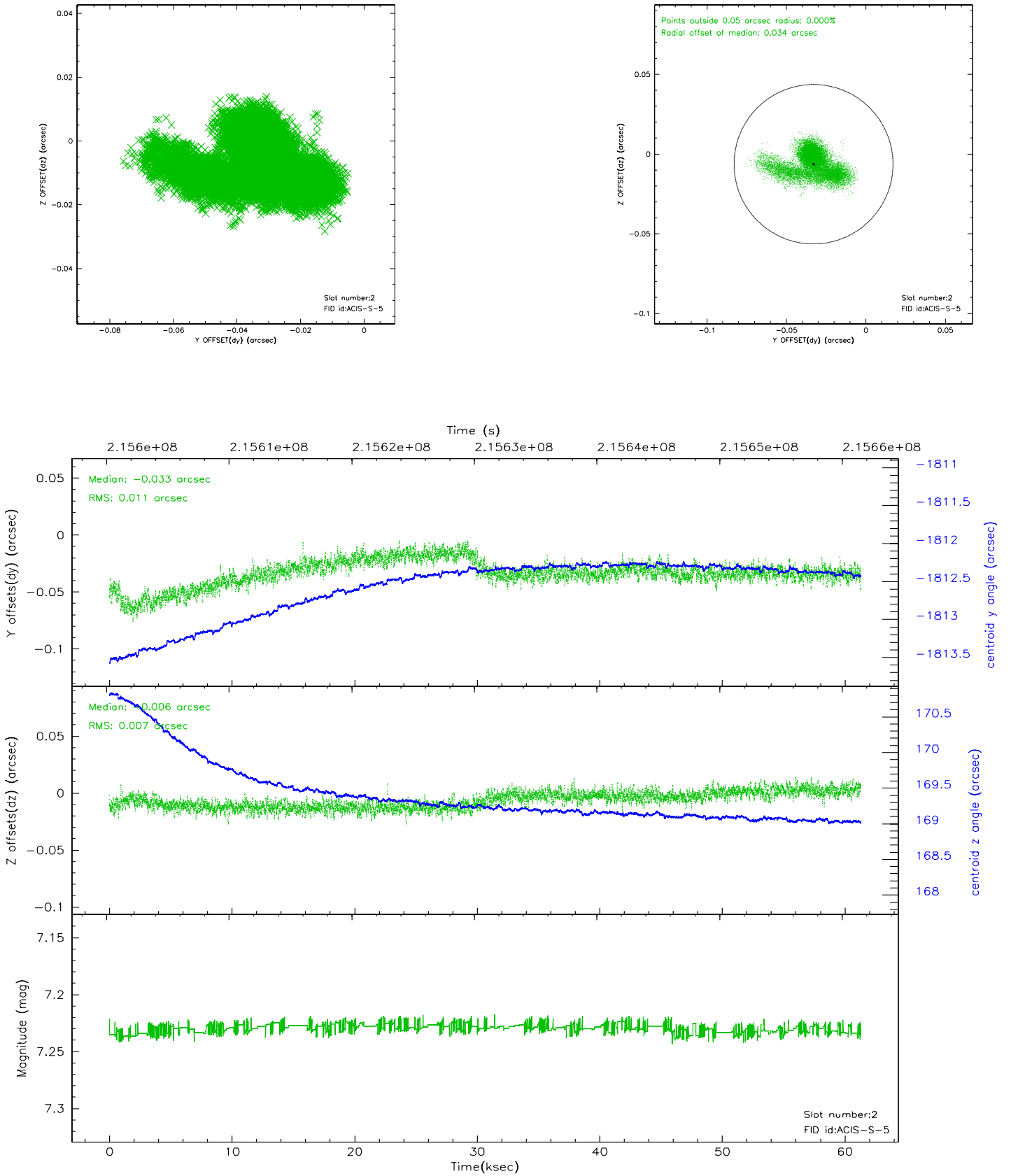
2.5.1 Slot 0



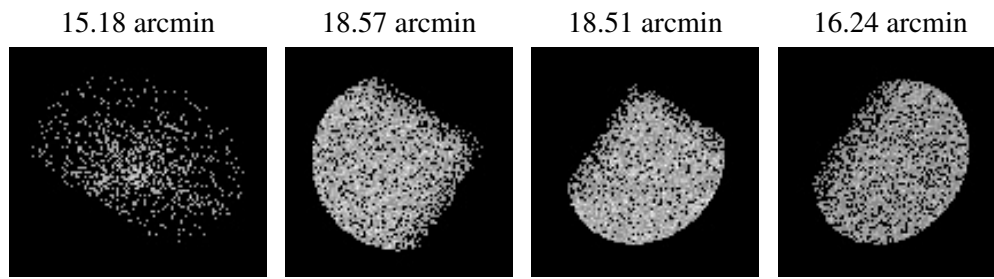
2.5.2 Slot 1



2.5.3 Slot 2



3 Point Sources



A Summary

A.1 Status

V&V Scientist	Beth Sundheim
V&V Date (YYYY-MM-DD)	2006.04.13
V&V Edition	1
V&V Disposition and Status	OK
V&V Charge Time	61.315

A.2 Comments

Roll constraint satisfied.