

V&V Reference Report

L2 ASCDS Version : 7.6.7.2

Observation 4668 - L2 Version 3
Chandra X-Ray Center

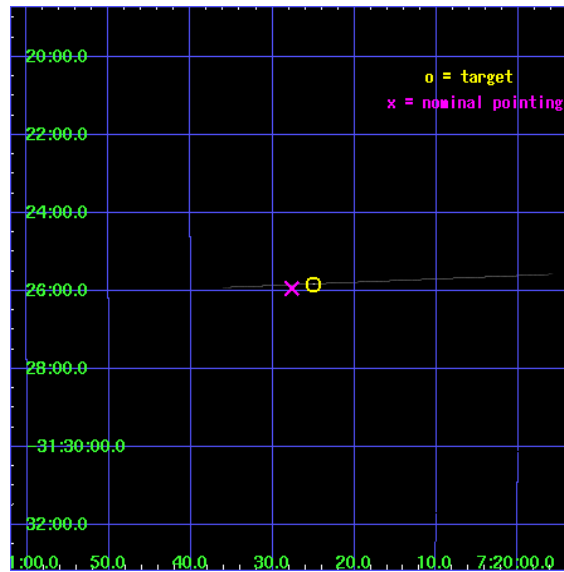
L2 Processing Date : Apr 10 2008

Contents

1	Front	2
2	OBI	3
2.1	OBI	3
2.1.1	Images	3
2.1.2	Bias	3
2.1.3	Parameters	4
2.1.4	Events	4
2.2	Compared Parameters	5
2.3	Aspect	6
2.4	Star Slots	9
2.4.1	Slot 3	9
2.4.2	Slot 4	10
2.4.3	Slot 5	11
2.4.4	Slot 6	12
2.4.5	Slot 7	13
2.5	FID Slots	14
2.5.1	Slot 0	14
2.5.2	Slot 1	15
2.5.3	Slot 2	16
A	Summary	17
A.1	Status	17
A.2	Comments	17

1 Front

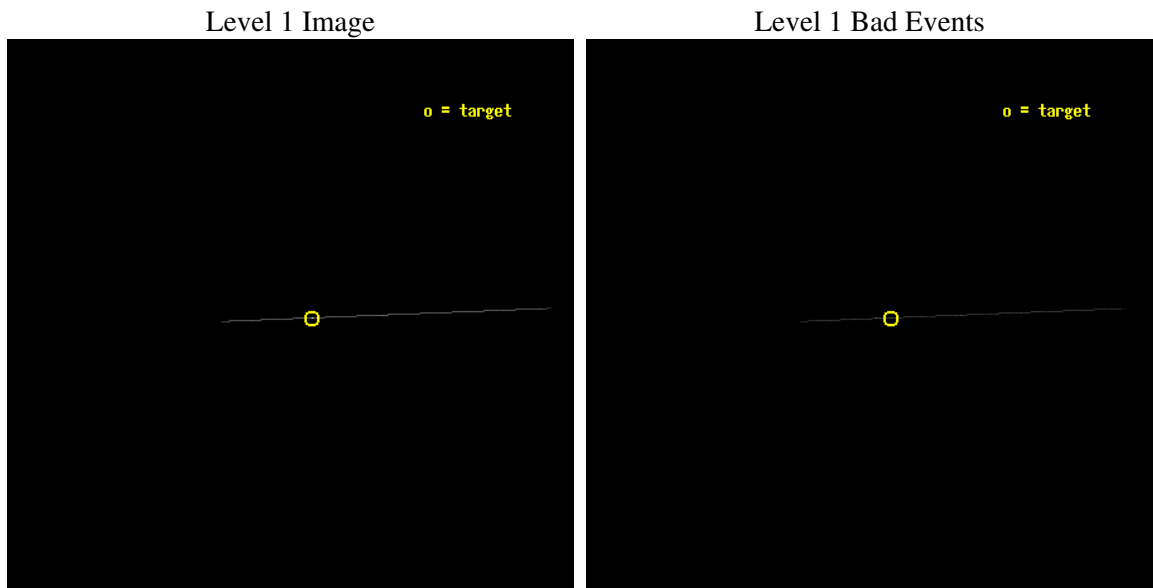
seq_num	500487
obs_id	4668
title	Timing the Enigmatic Nearby Neutron Star RX J0720.4-3125
observer	Dr David Kaplan
object	RX J0720.4-3125
ra_targ	110.104167
dec_targ	-31.430444
ra_nom	110.1151744541
dec_nom	-31.43248170909
roll_nom	357.70108732827
revision	3
ontime	5156.75
livetime	5136.6064453125
ontime7	5156.75
l2events	26757



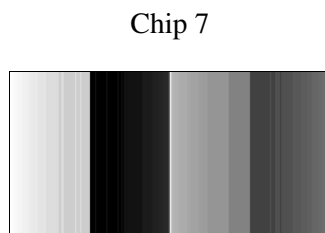
2 OBI

2.1 OBI

2.1.1 Images



2.1.2 Bias



2.1.3 Parameters

obi_num	1
ascdsver	7.6.11.6
caldbver	3.4.4
date	2008-04-10T22:17:23
revision	3

sched_exp_time	5000.000000
ontime	5156.75
ontime7	5156.75
l1events	35706

2.1.4 Events

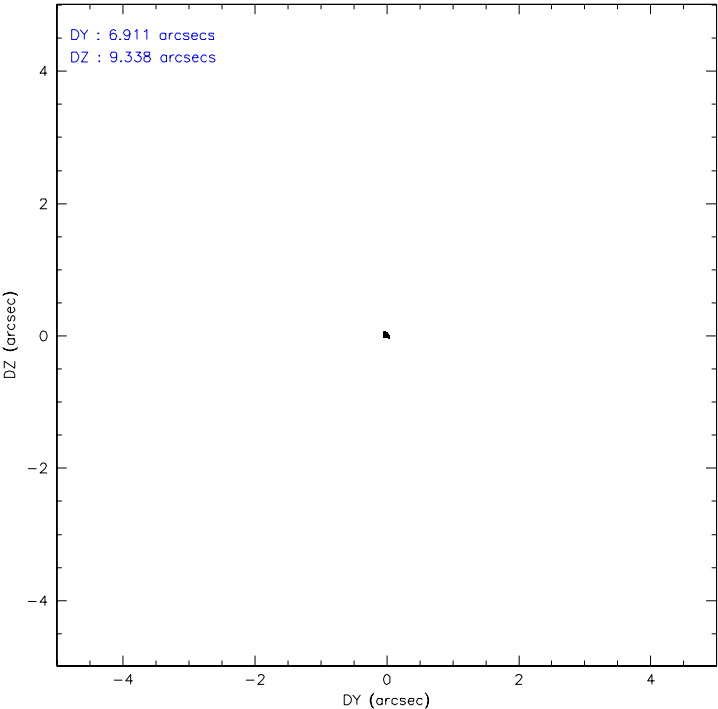
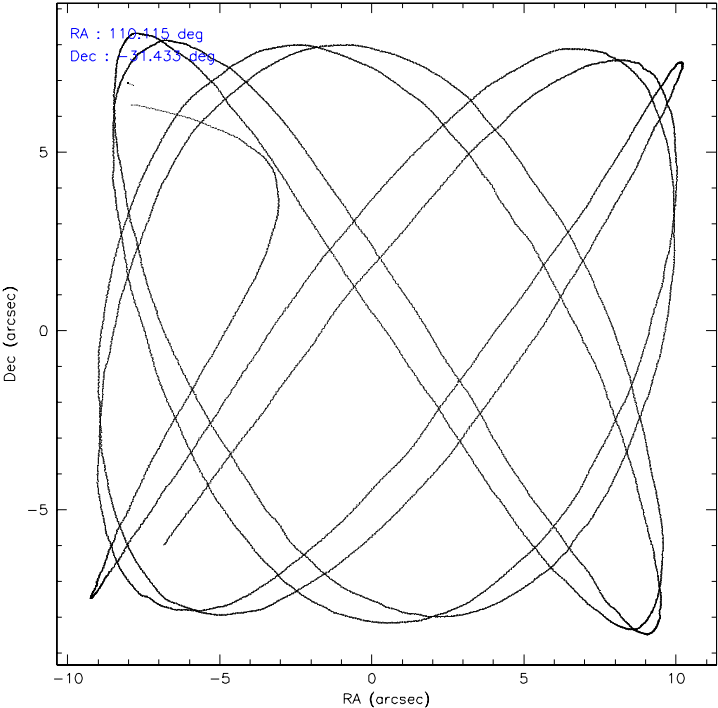
	ccd 7
level 1 events	35706
rejected events	8292
rejected %	23%

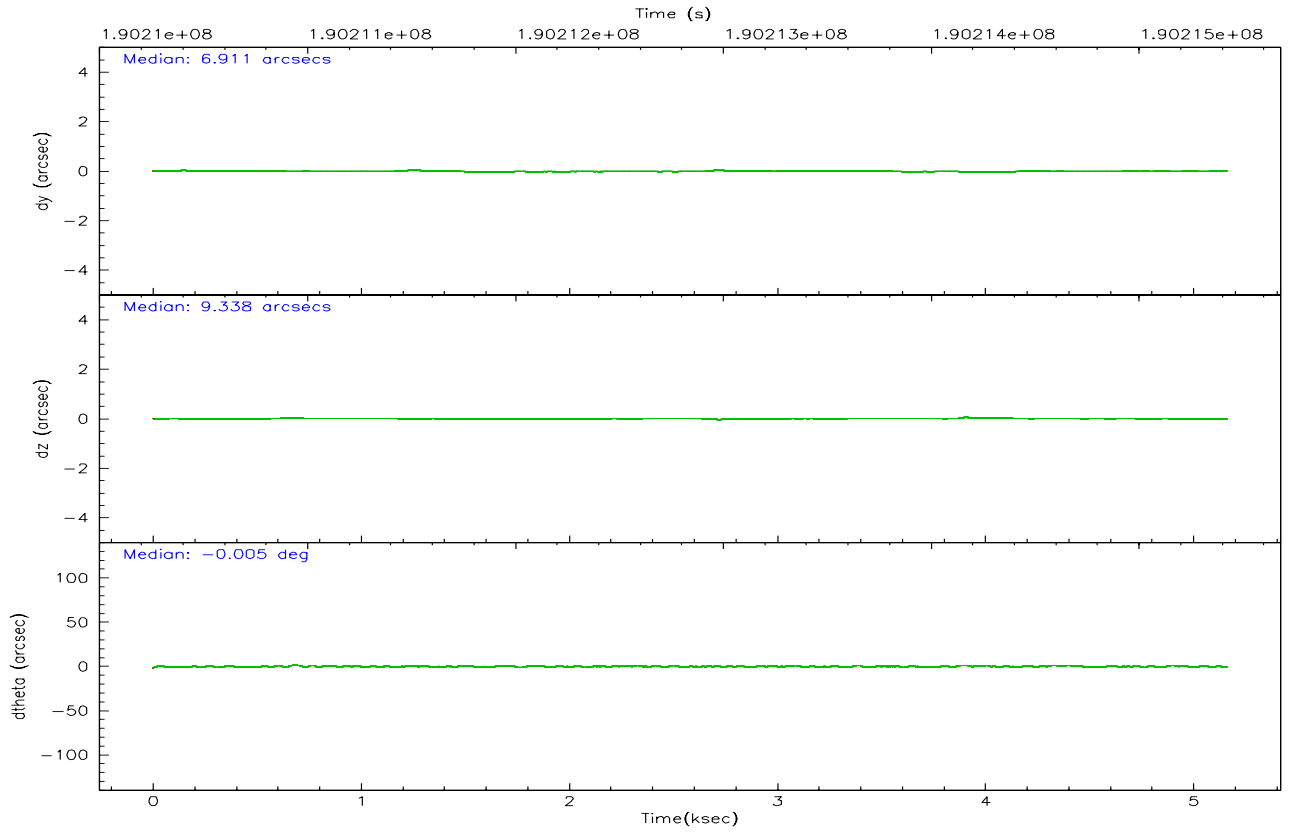
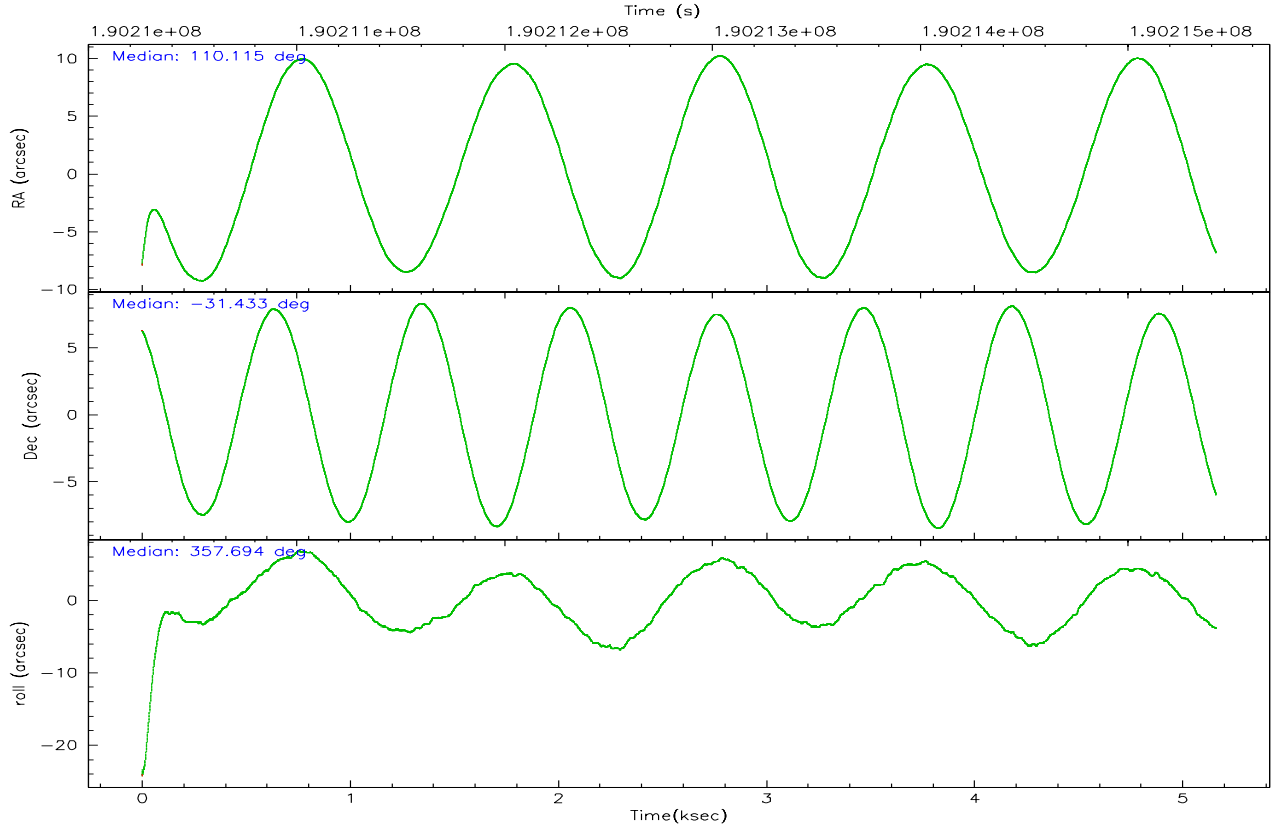
	ccd 7
grade 0 events	7956
	22%
grade 1 events	64
	0%
grade 2 events	7218
	20%
grade 3 events	2426
	6%
grade 4 events	2494
	6%
grade 5 events	4179
	11%
grade 6 events	11369
	31%
grade 7 events	0
	0%

2.2 Compared Parameters

Parameter	Planned	Actual	Parameter	Planned	Actual
Instrument	ACIS	ACIS	Obspar format version number	6	6
Detector	ACIS-7	ACIS-7	Obspar file type	PREDICTED	ACTUAL
Grating	NONE	NONE	Obspar update status	NONE	UPDATED
Data mode	CC33_FAINT	CC33_FAINT	On-chip summing requested	N	N
Observation mode	POINTING	POINTING	Subarray requested	NONE	NONE
Pointing RA	110.087186	110.1151744541028	Alternating exposures requested	N	N
Pointing Dec	-31.445501	-31.43248170909018	Primary exposure time	0.000000	0
Pointing Roll	357.529897	357.7010873282675			
SIM focus pos (mm)	-0.684267	-0.6828225247311905			
SIM defocus (mm)	0	0.001444936568705701			
SIM translation stage pos (mm)	-190.132523	-190.1400660498719			
SIM translation stage offset (mm)	0	0.00754346686406393			
Observation start time	190210417.184000	190209141.87492			
Observation start date	2004-01-11T12:12:33	2004-01-11T11:52:21			
Observation end time	190215417.184000	190216340.45023			
Observation end date	2004-01-11T13:35:53	2004-01-11T13:52:20			
Read mode	CONTINUOUS	CONTINUOUS			

2.3 Aspect



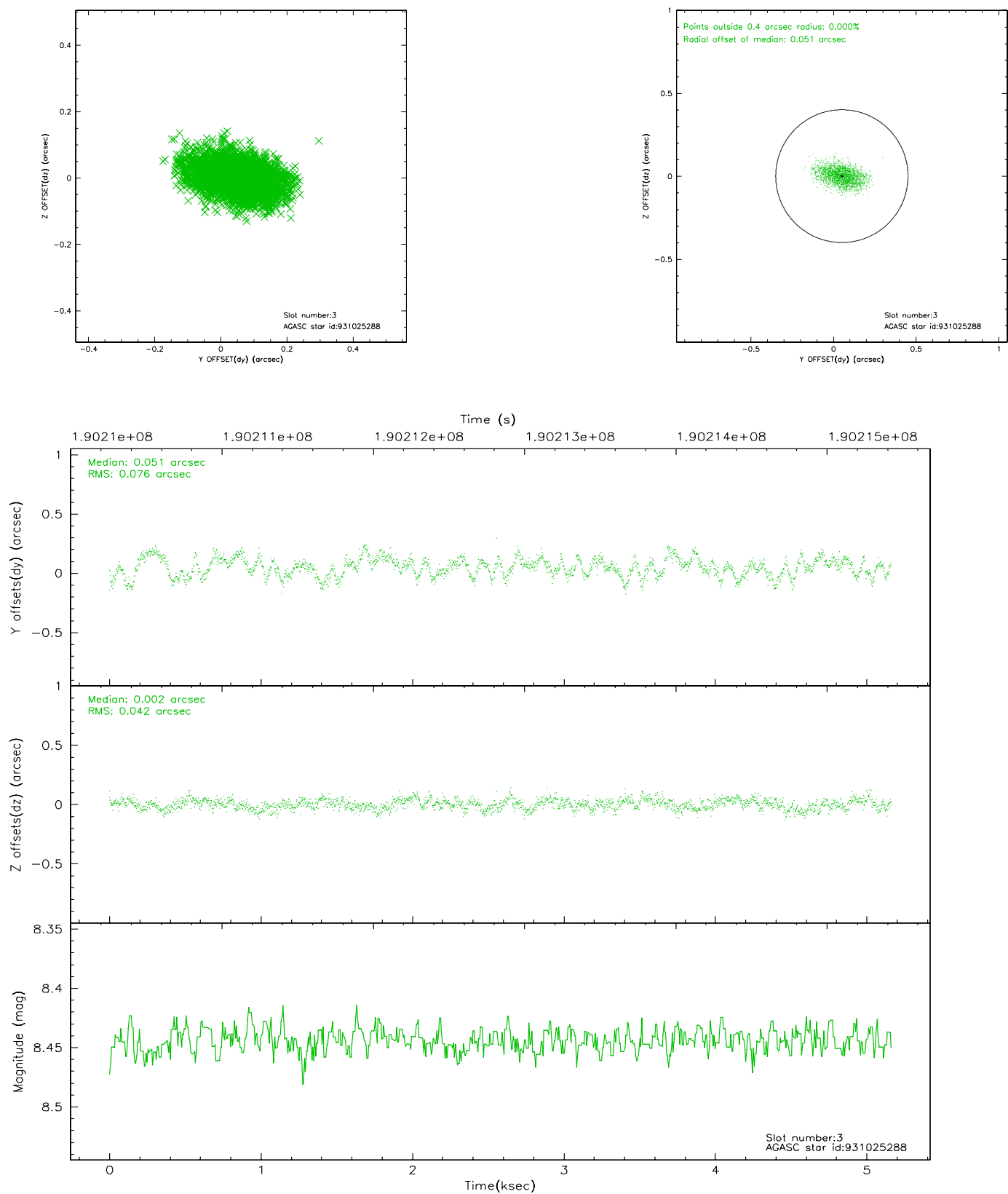


Slot Statistics

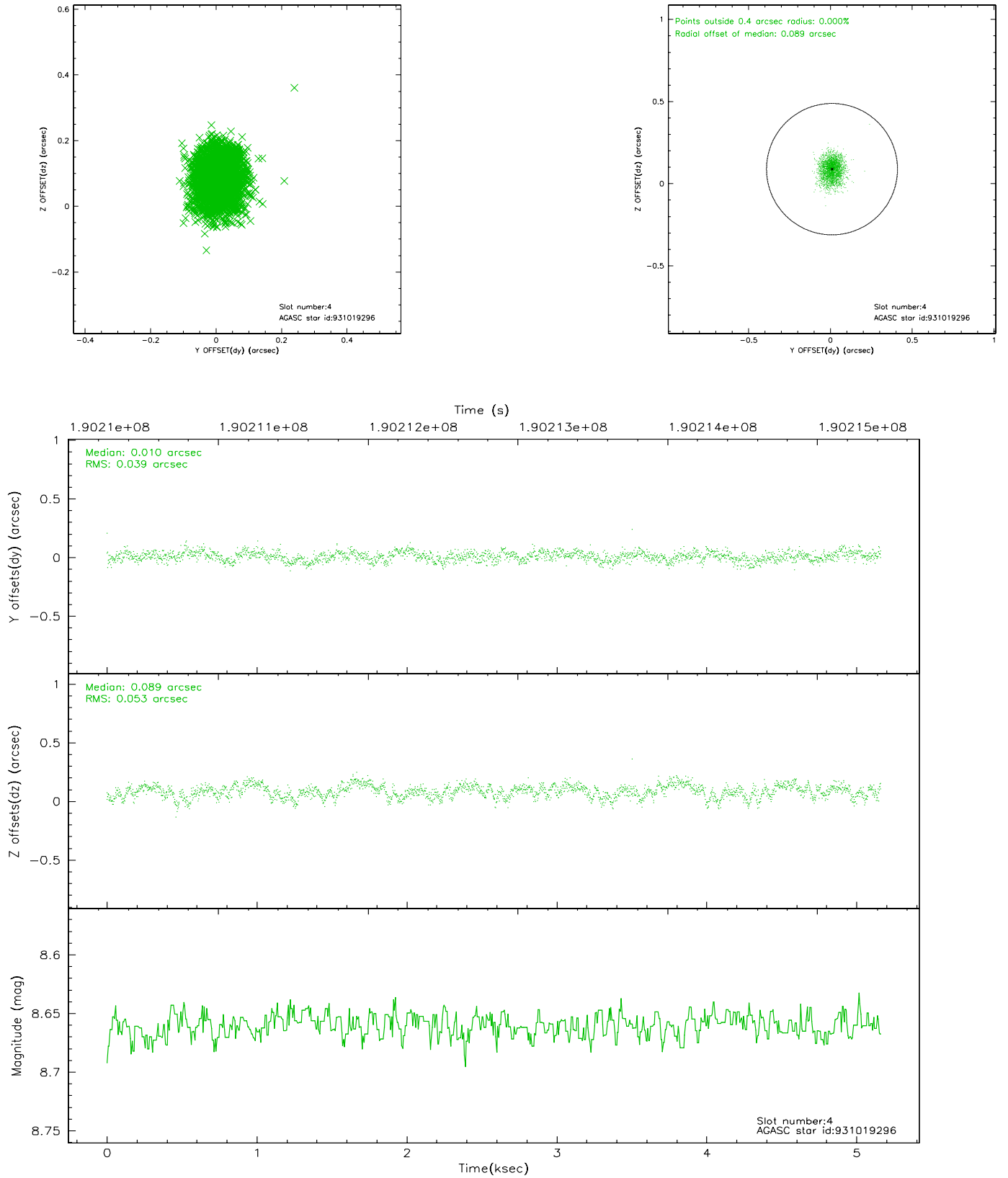
slot	status	id	mag	n_pts	med_dy	med_dz	dr1	dr2	ra	dec	mean_y	mean_z
0	FID	ACIS-S-1	7.18	1260	0.019	0.022	0.006	0.010	0.000000	0.000000	936.39	-1726.18
1	FID	ACIS-S-2	7.10	1259	-0.033	0.009	0.006	0.009	0.000000	0.000000	-758.91	-1731.95
2	FID	ACIS-S-6	7.35	1259	-0.007	-0.025	0.005	0.010	0.000000	0.000000	401.50	813.90
3	GUIDE	931025288	8.44	2519	0.051	0.002	0.092	0.153	109.511084	-30.937793	-1855.69	1744.67
4	GUIDE	931019296	8.66	2518	0.010	0.089	0.070	0.114	109.471771	-31.694370	-1844.86	-981.24
5	GUIDE	931018016	8.47	2519	0.076	-0.031	0.071	0.113	109.684535	-31.226562	-1272.68	731.26
6	GUIDE	931160352	8.64	2513	-0.102	-0.144	0.102	0.158	110.268138	-30.864891	468.04	2112.29
7	GUIDE	931695048	7.37	2517	-0.042	0.093	0.087	0.150	110.648539	-32.046020	1805.55	-2089.23

2.4 Star Slots

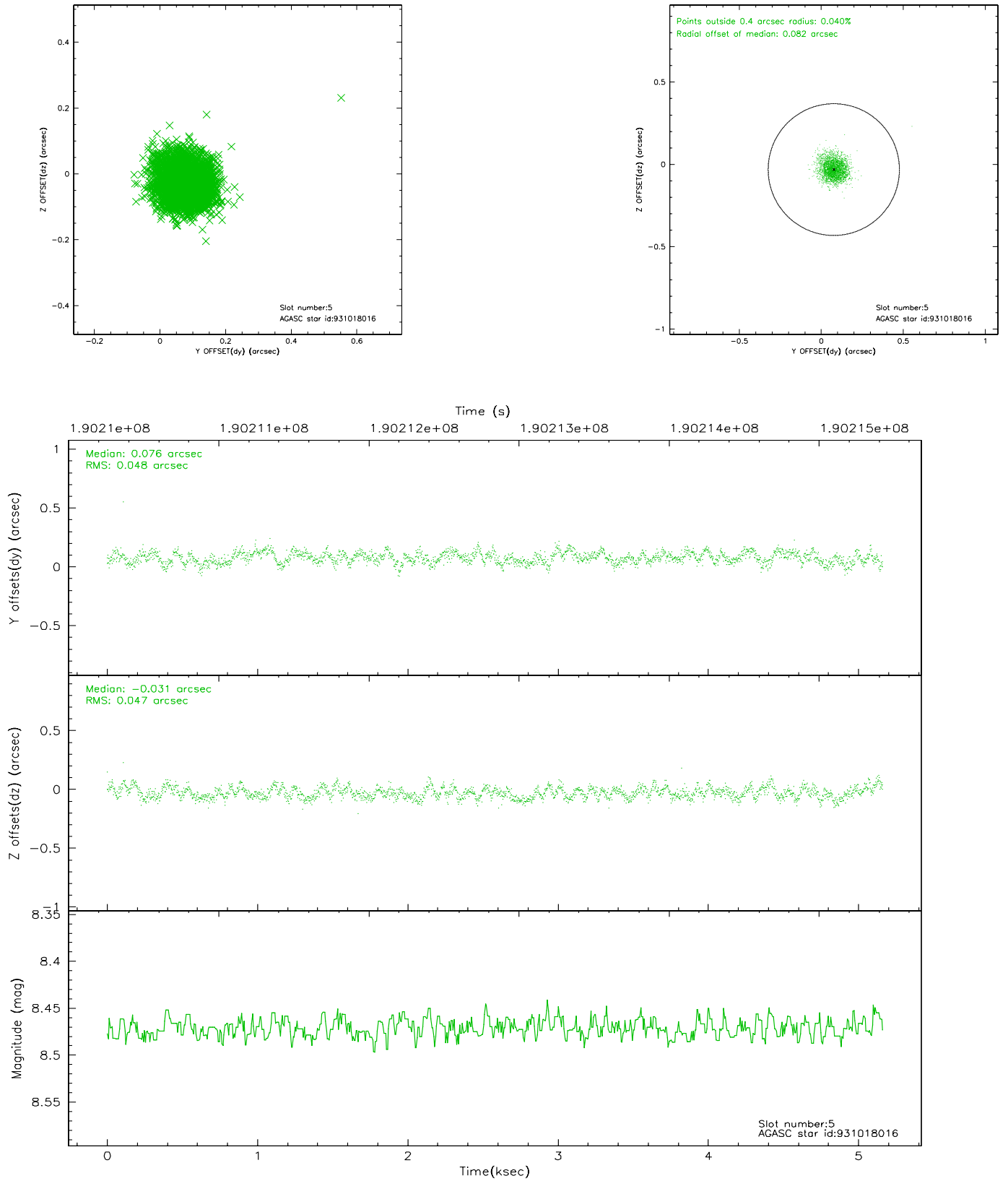
2.4.1 Slot 3



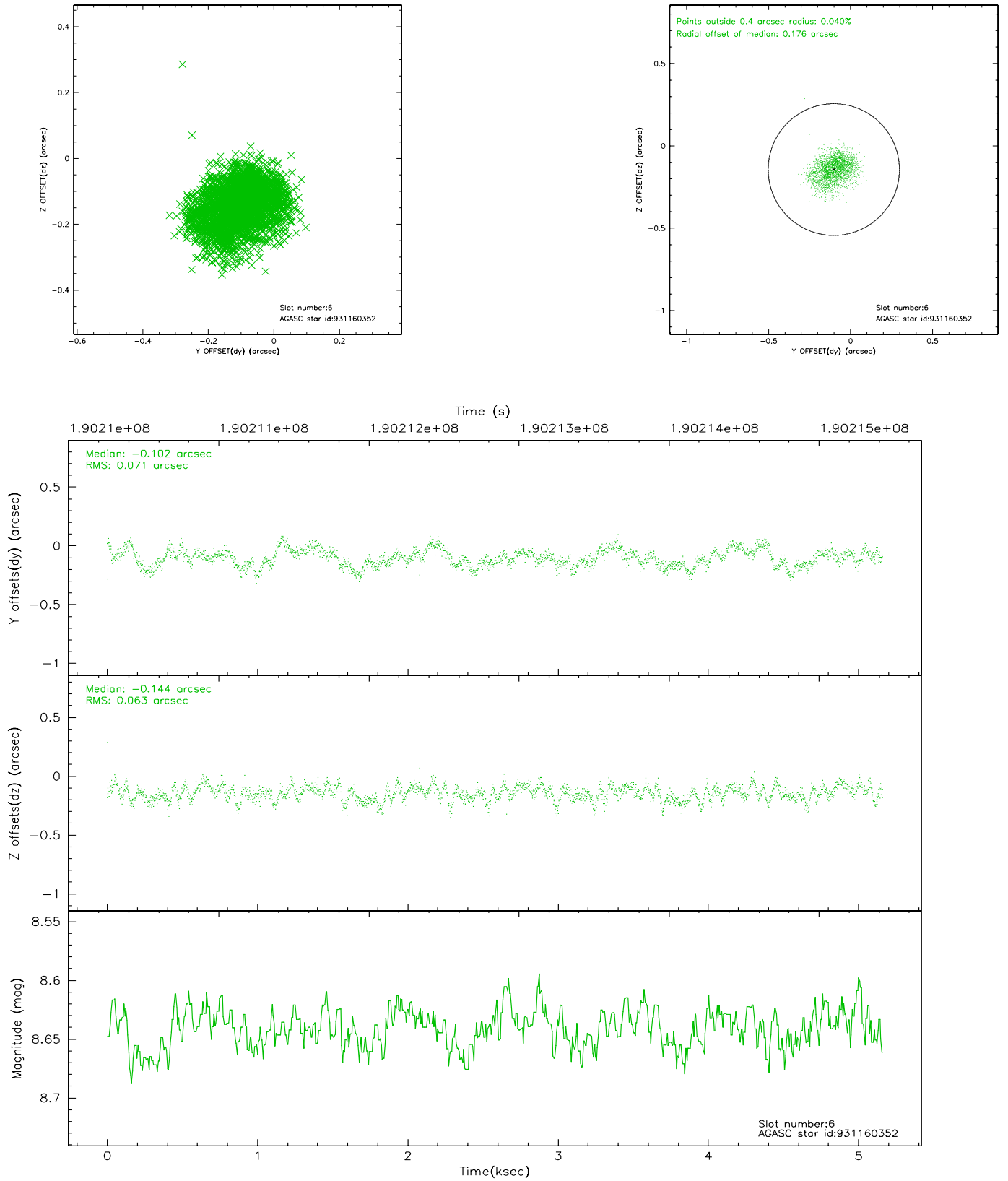
2.4.2 Slot 4



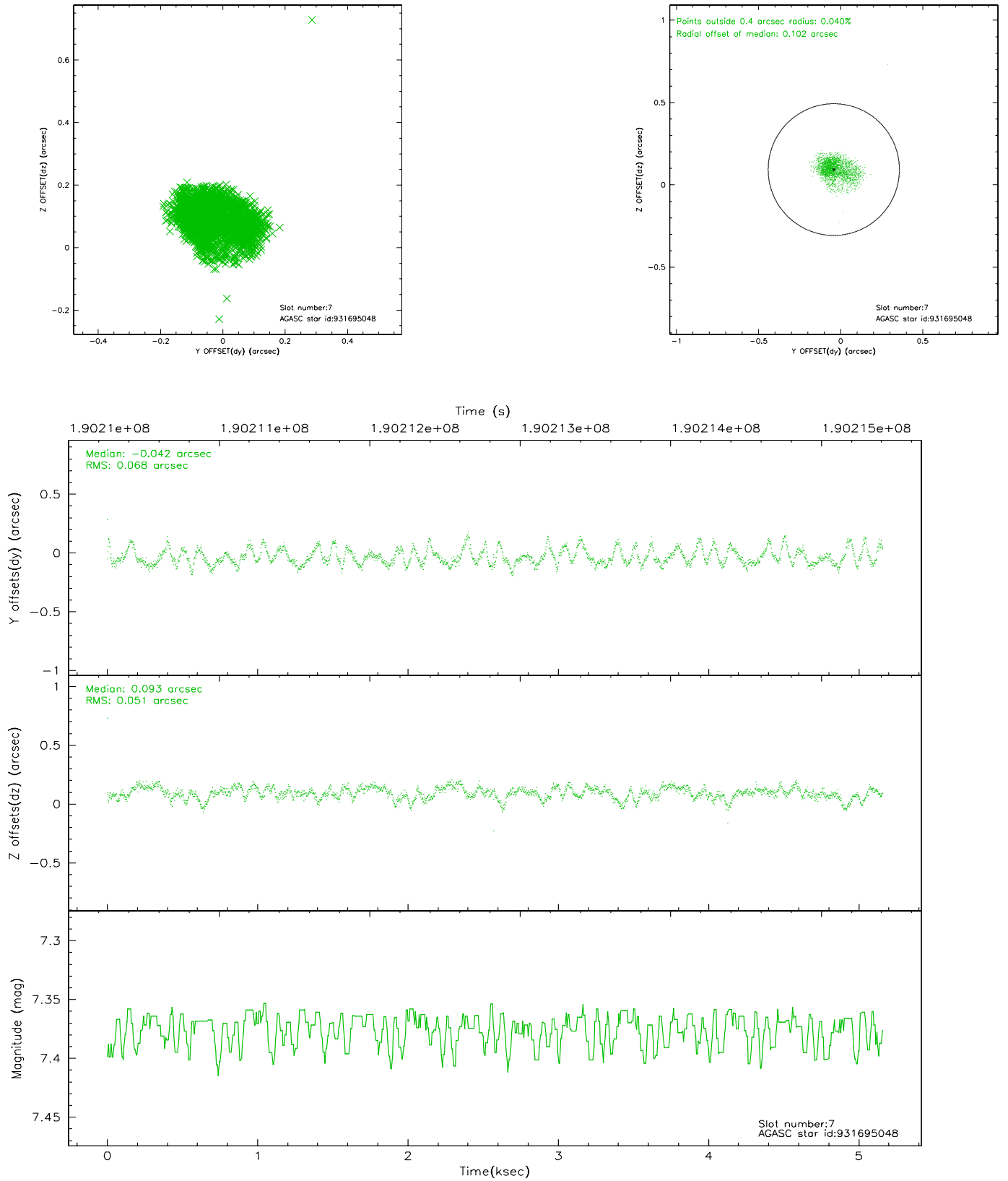
2.4.3 Slot 5



2.4.4 Slot 6

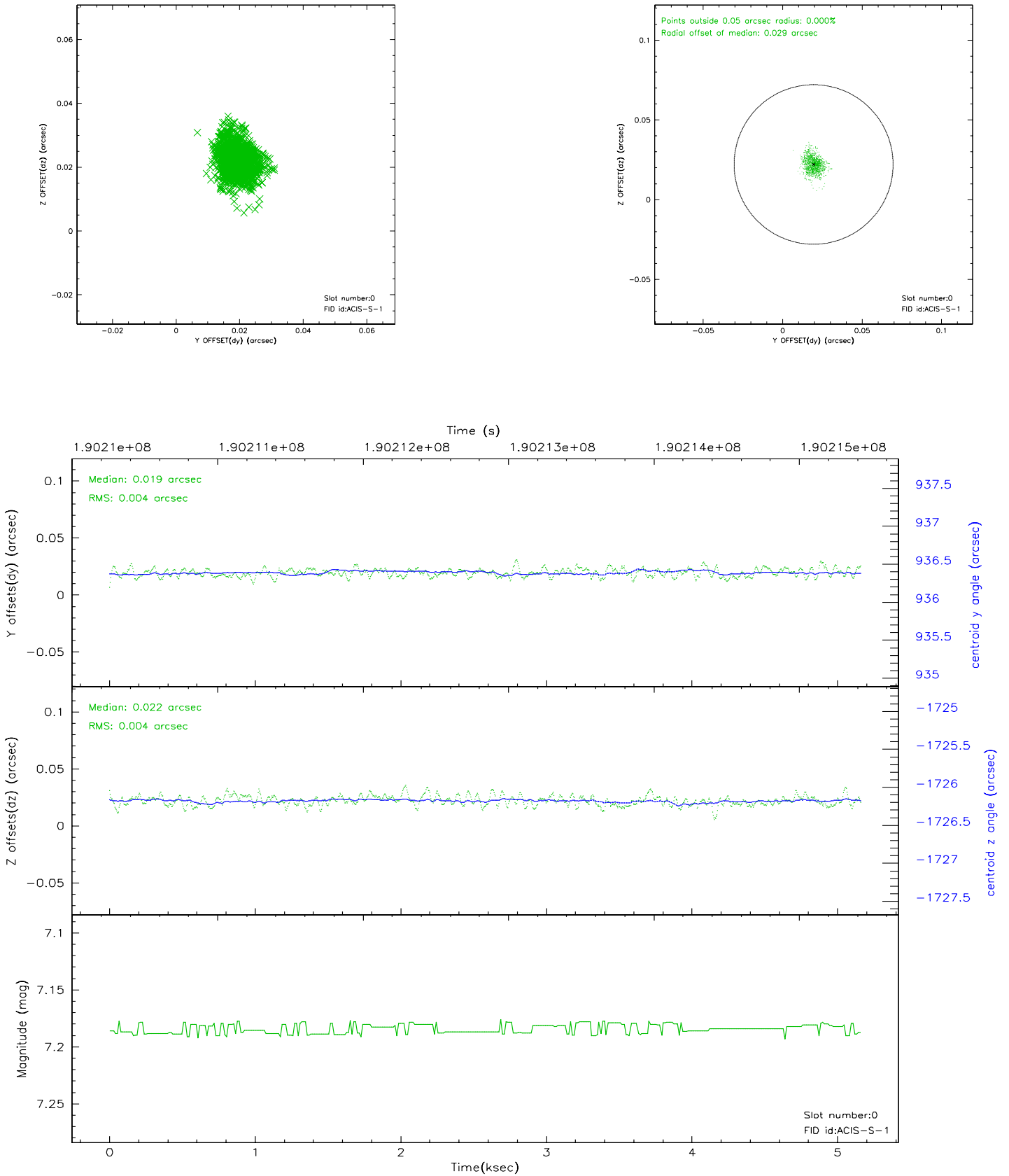


2.4.5 Slot 7

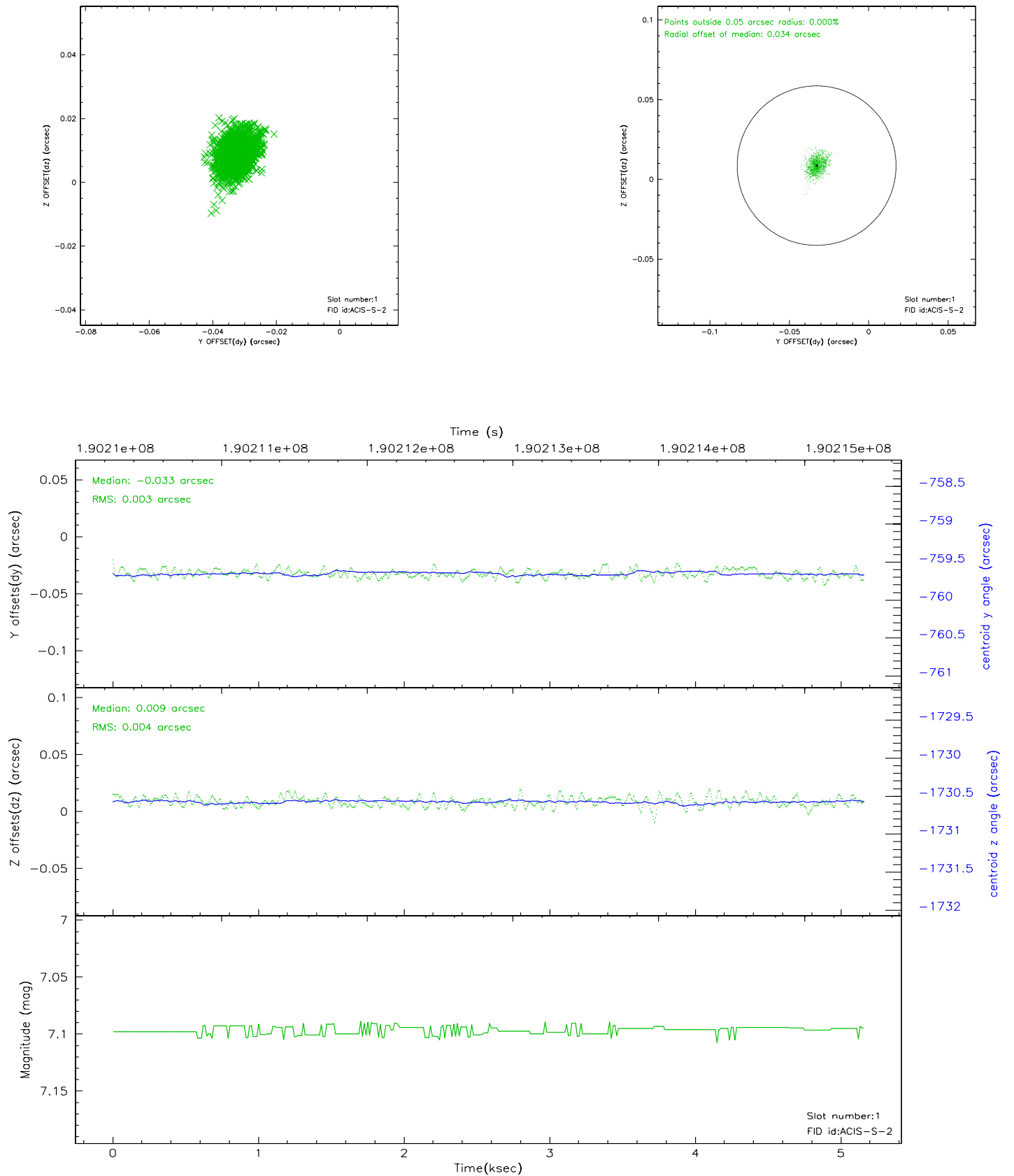


2.5 FID Slots

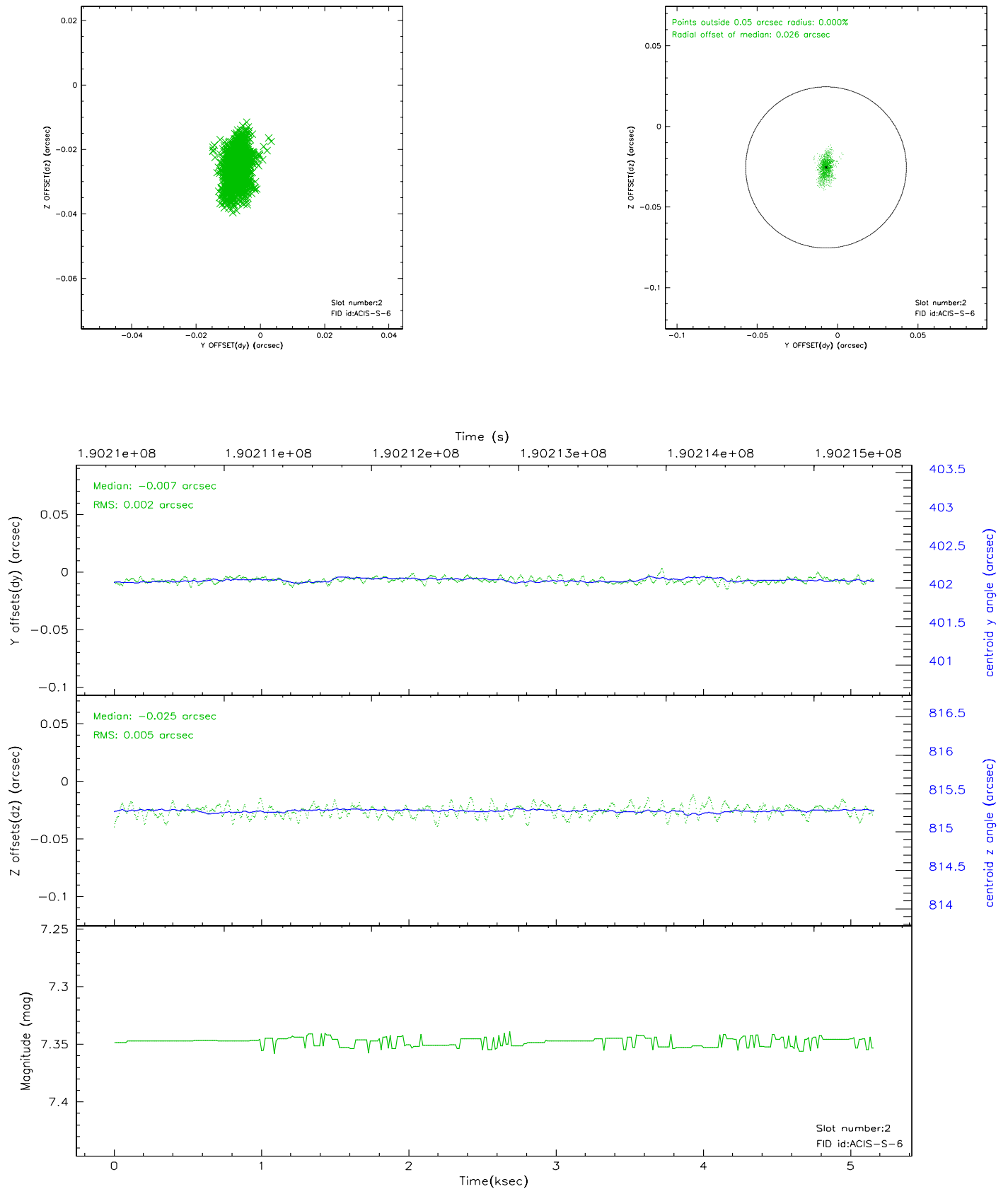
2.5.1 Slot 0



2.5.2 Slot 1



2.5.3 Slot 2



A Summary

A.1 Status

V&V Scientist	Beth Sundheim
V&V Date (YYYY-MM-DD)	2008.04.14
V&V Edition	1
V&V Disposition and Status	OK
V&V Charge Time	5.16

A.2 Comments