

V&V Reference Report

L2 ASCDS Version : 8.4.5

Observation 4666 - L2 Version 4
Chandra X-Ray Center

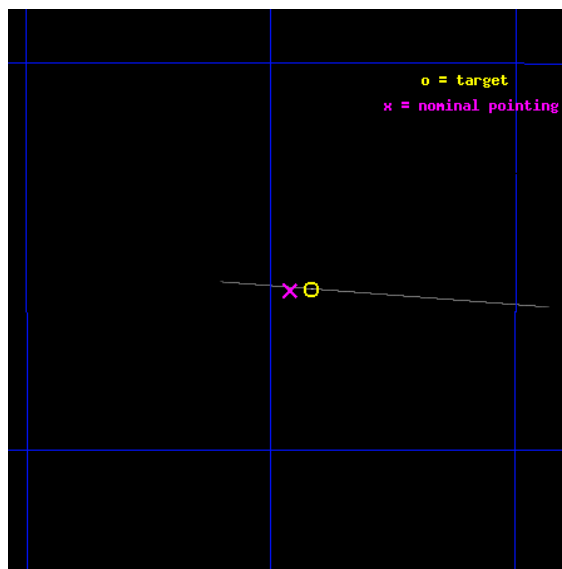
L2 Processing Date : Nov 10 2012

Contents

1	Front	2
2	OBI	3
2.1	OBI	3
2.1.1	Images	3
2.1.2	Bias	3
2.1.3	Parameters	4
2.1.4	Events	4
2.2	Compared Parameters	5
2.3	Aspect	6
2.4	Star Slots	9
2.4.1	Slot 3	9
2.4.2	Slot 4	10
2.4.3	Slot 5	11
2.4.4	Slot 6	12
2.4.5	Slot 7	13
2.5	FID Slots	14
2.5.1	Slot 0	14
2.5.2	Slot 1	15
2.5.3	Slot 2	16
A	Summary	17
A.1	Status	17
A.2	Comments	17

1 Front

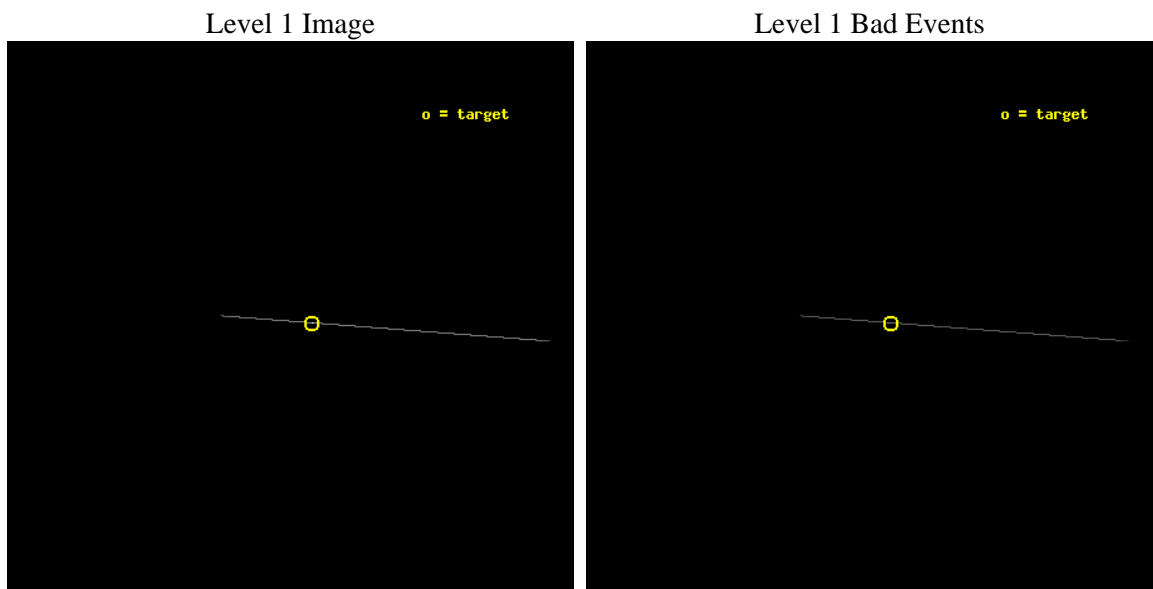
seq_num	500485	Sequence number
obs_id	4666	Observation id
title	Timing the Enigmatic Nearby Neutron Star RX J0720.4-3125	Proposal
observer	Prof. David Kaplan	Principal investigator
object	RX J0720.4-3125	Source name
ra_targ	110.104167	Observer's specified target RA [deg]
dec_targ	-31.430444	Observer's specified target Dec [deg]
ra_nom	110.11545643879	Nominal RA [deg]
dec_nom	-31.431379463665	Nominal Dec [deg]
roll_nom	4.3280487661709	Nominal Roll [deg]
revision	4	Processing version of data
ontime	10121.25	Sum of GTIs [s]
livetime	10081.713867188	Livetime [s]
ontime7	10121.25	Sum of GTIs [s]
l2events	52255	Number of level 2 events



2 OBI

2.1 OBI

2.1.1 Images



2.1.2 Bias

Chip 7



2.1.3 Parameters

obi_num	0	Obi number	sched_exp_time	9941.337000	[s] Scheduled observation exposure time
ascdsver	8.4.5	Processing system revision	ontime	10121.25	Sum of GTIs [s]
caldsver	4.5.2	 	ontime7	10121.25	Sum of GTIs [s]
date	2012-11-10T03:01:13	Date and time of file creation	l1events	64150	Number of level 1 events
revision	4	Processing version of data			

2.1.4 Events

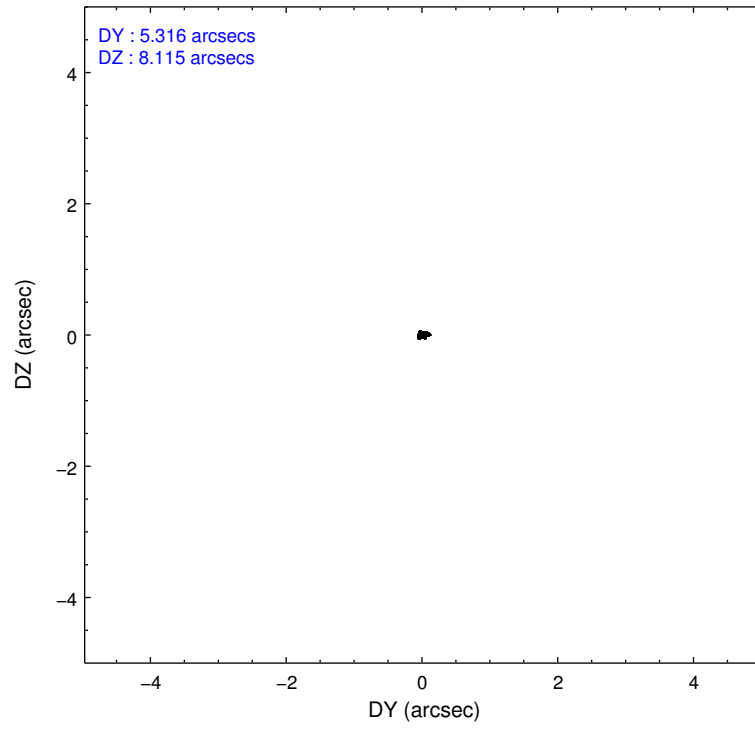
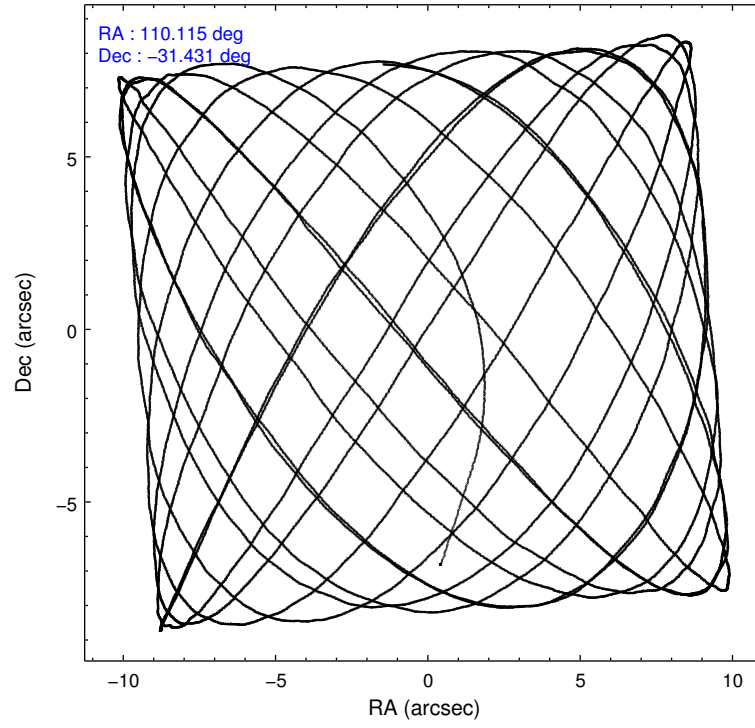
	ccd 7
level 1 events	64150
rejected events	10498
rejected %	16%

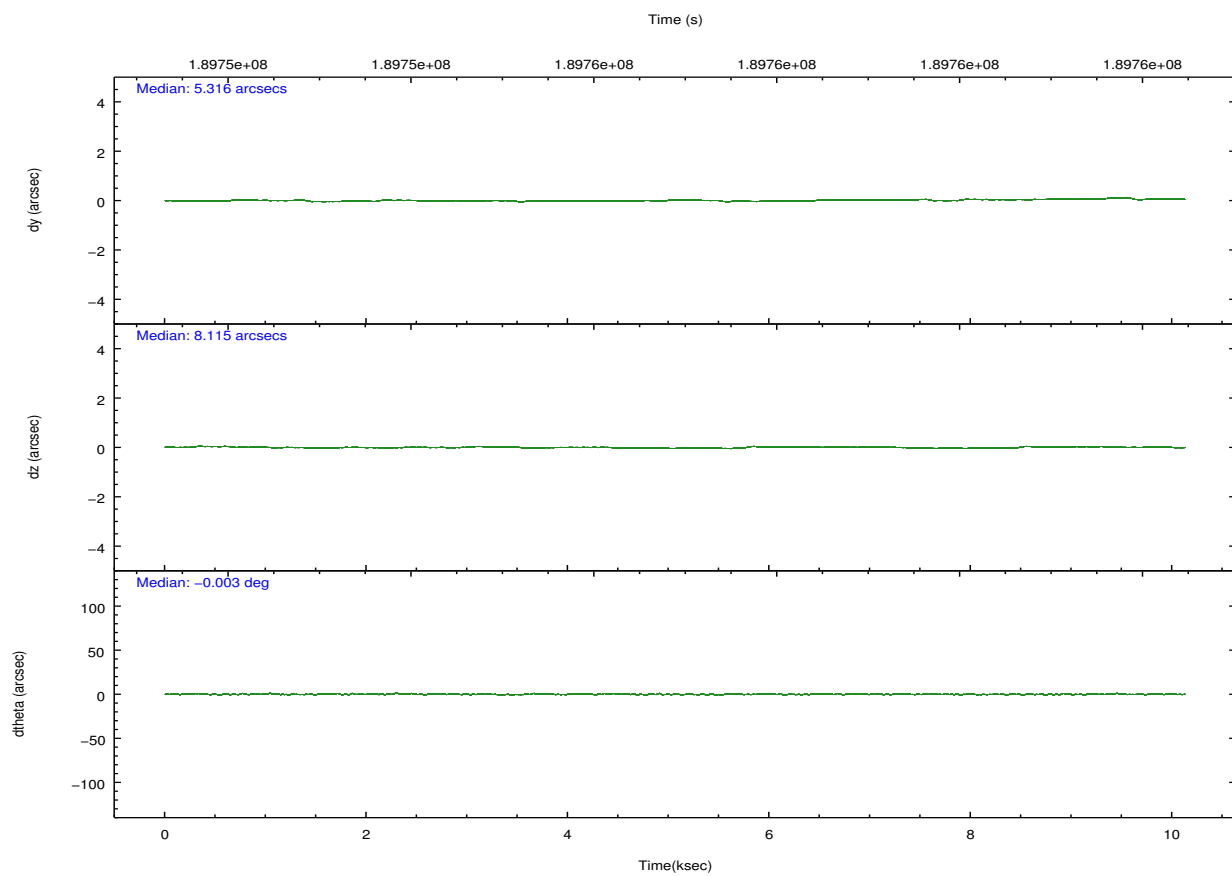
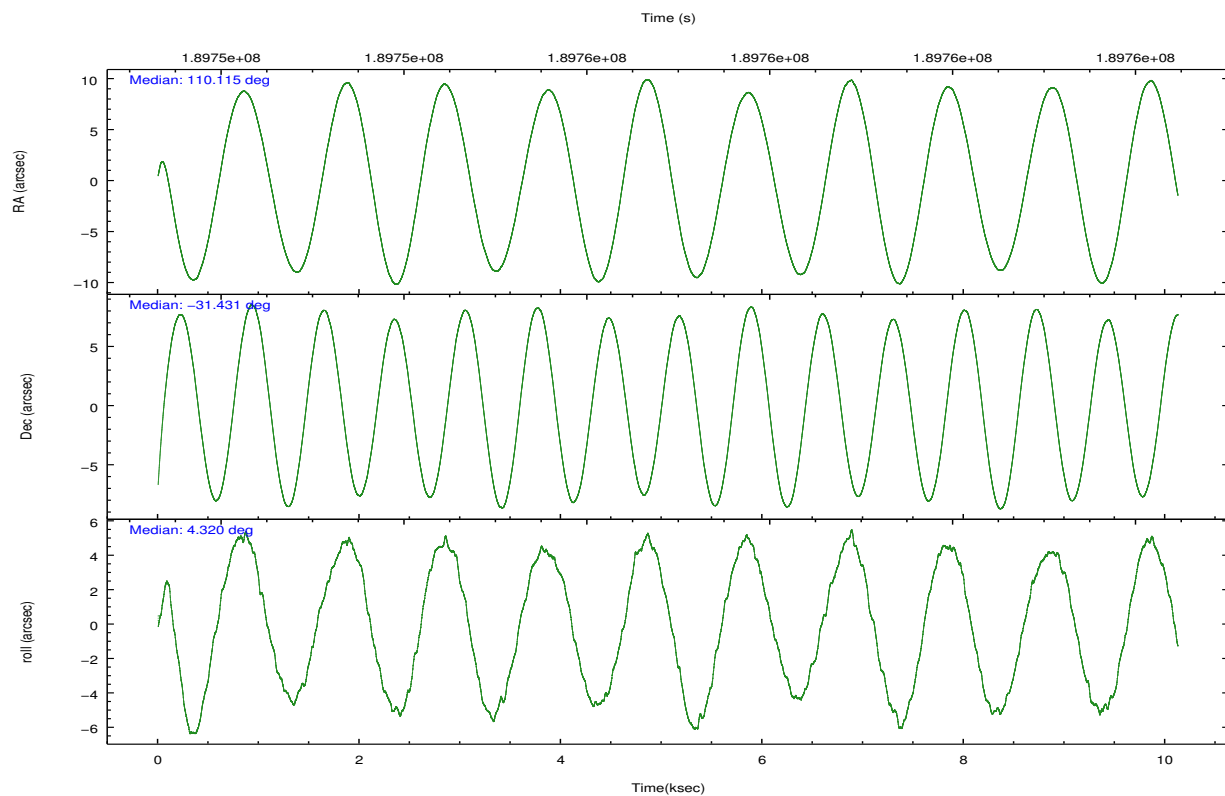
	ccd 7
grade 0 events	14912
	23%
grade 1 events	143
	0%
grade 2 events	13034
	20%
grade 3 events	4239
	6%
grade 4 events	4375
	6%
grade 5 events	7237
	11%
grade 6 events	20210
	31%
grade 7 events	0
	0%

2.2 Compared Parameters

Parameter	Planned	Actual	Parameter	Planned	Actual
Instrument	ACIS	ACIS	Obspar format version number	7	7
Detector	ACIS-7	ACIS-7	Obspar file type	PREDICTED	ACTUAL
Grating	NONE	NONE	Obspar update status	NONE	UPDATED
Data mode	CC33_FAINT	CC33_FAINT	Number of optional ACIS chips dropped	0	0
Observation mode	POINTING	POINTING	On-chip summing requested	N	N
[deg] Pointing RA	110.089327	110.1154564387892	Subarray requested	NONE	NONE
[deg] Pointing Dec	-31.447075	-31.431379463665	Alternating exposures requested	N	N
[deg] Pointing Roll	4.157792	4.328048766170911	[s] Primary exposure time	0.000000	0
[mm] SIM focus pos	-0.684267	-0.6828225247311905			
[mm] SIM defocus	0	0.001444936568705701			
[mm] SIM translation stage pos	-190.132523	-190.1400660498719			
[mm] SIM translation stage offset	0	0.00754346686406393			
[s] Observation start time (MET)	189752014.184000	189750927.39246			
Observation start date	2004-01-06T04:52:30	2004-01-06T04:35:27			
[s] Observation end time (MET)	189761955.184000	189763180.243			
Observation end date	2004-01-06T07:38:11	2004-01-06T07:59:40			
Read mode	CONTINUOUS	CONTINUOUS			

2.3 Aspect



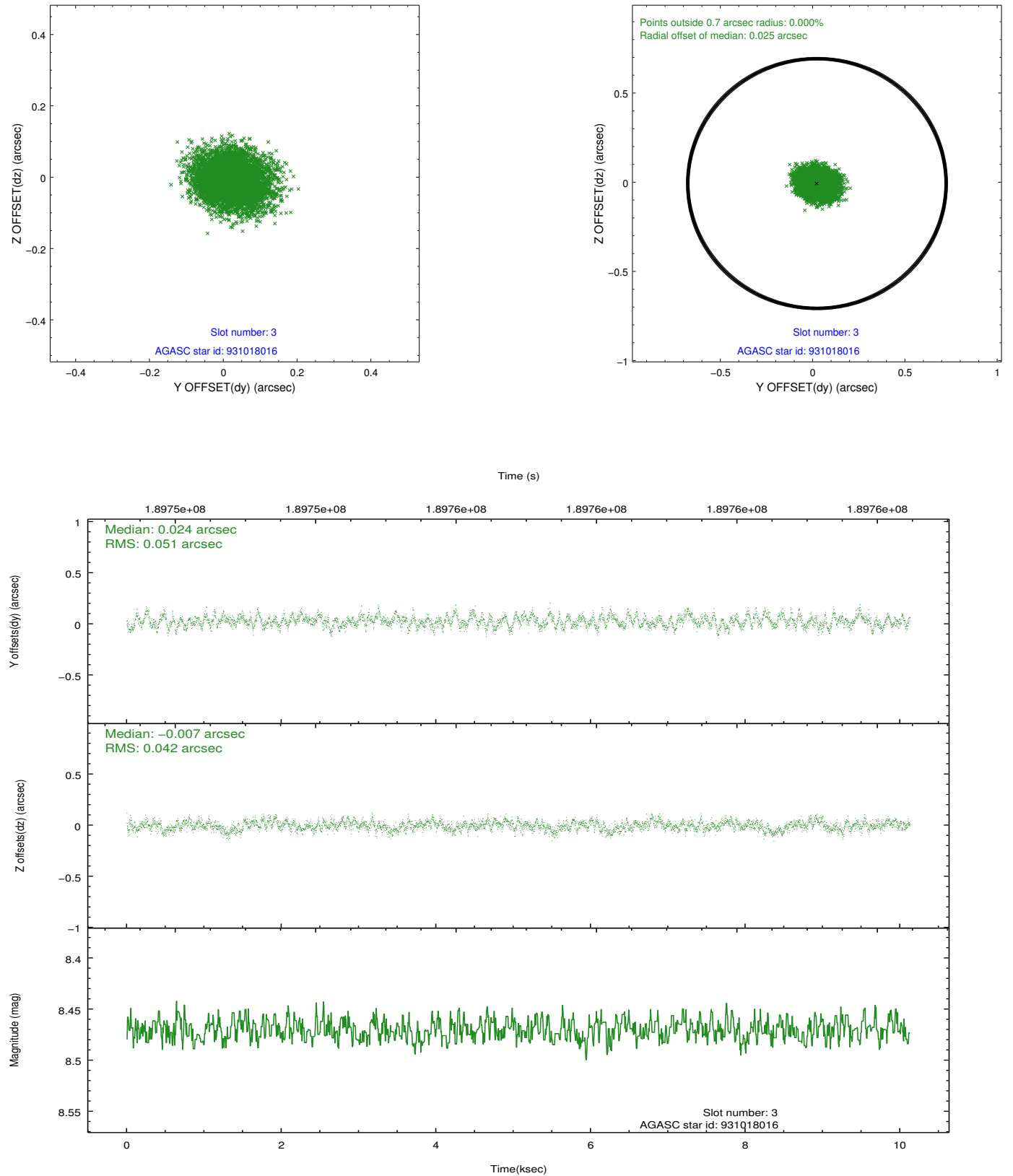


Slot Statistics

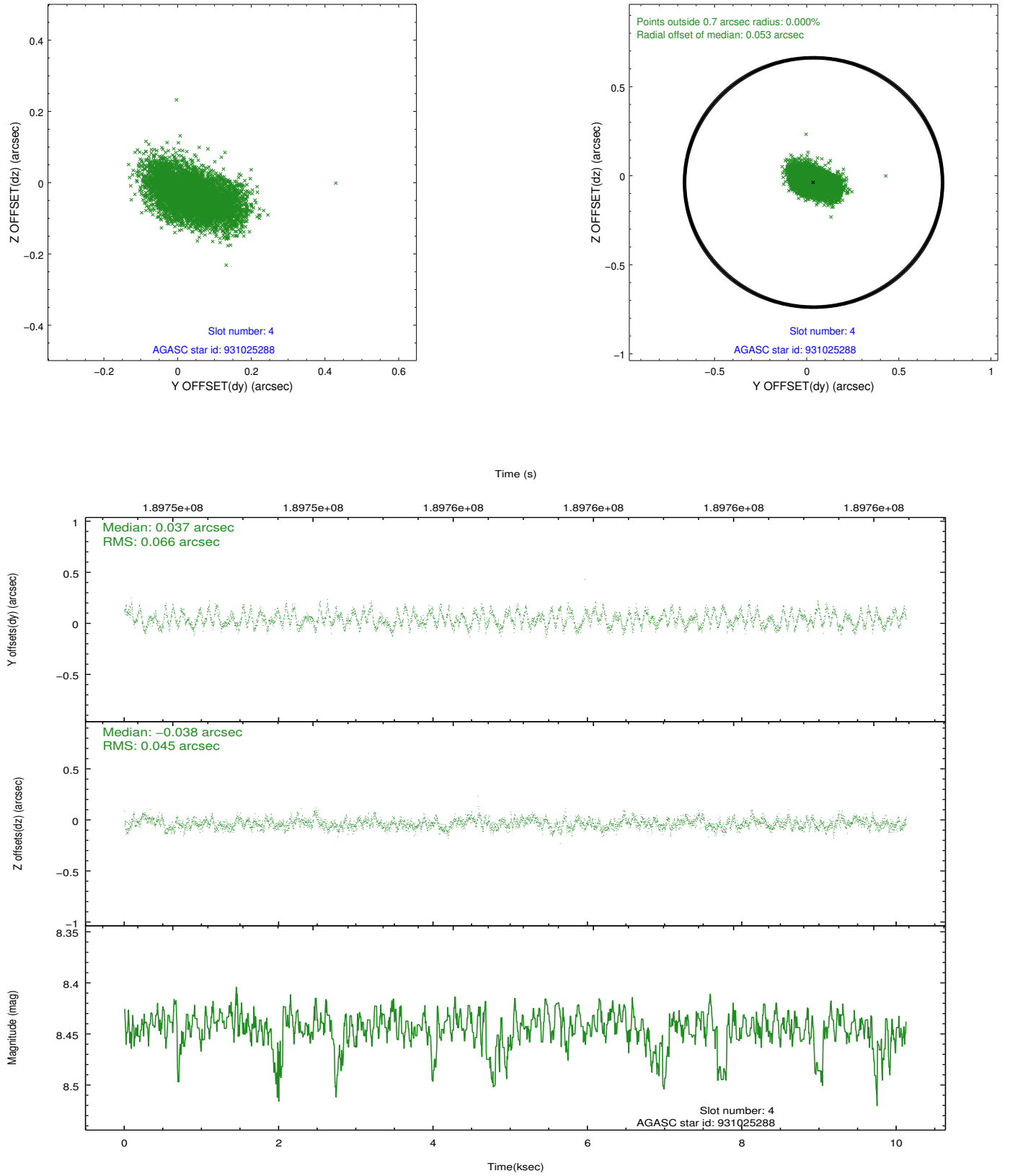
slot	status	id	mag	n_pts	med_dy	med_dz	dr1	dr2	ra	dec	mean_y	mean_z
0	FID	ACIS-S-2	7.11	2470	-0.036	-0.055	0.007	0.011	0.000000	0.000000	-758.09	-1729.35
1	FID	ACIS-S-4	7.21	2470	0.096	0.032	0.006	0.010	0.000000	0.000000	2155.11	178.64
2	FID	ACIS-S-5	7.23	2469	-0.091	0.032	0.007	0.011	0.000000	0.000000	-1810.29	172.96
3	GUIDE	931018016	8.47	4941	0.024	-0.007	0.071	0.114	109.684535	-31.226562	-1185.39	879.71
4	GUIDE	931025288	8.44	4939	0.037	-0.038	0.086	0.139	109.511084	-30.937793	-1648.54	1953.42
5	GUIDE	931160352	8.62	4938	-0.086	-0.057	0.093	0.141	110.268138	-30.864891	702.51	2050.45
6	GUIDE	931695048	7.39	4940	-0.009	0.033	0.100	0.151	110.648539	-32.046020	1545.98	-2277.91
7	GUIDE	931019296	8.66	4938	0.038	0.067	0.060	0.094	109.471771	-31.694370	-1951.08	-756.91

2.4 Star Slots

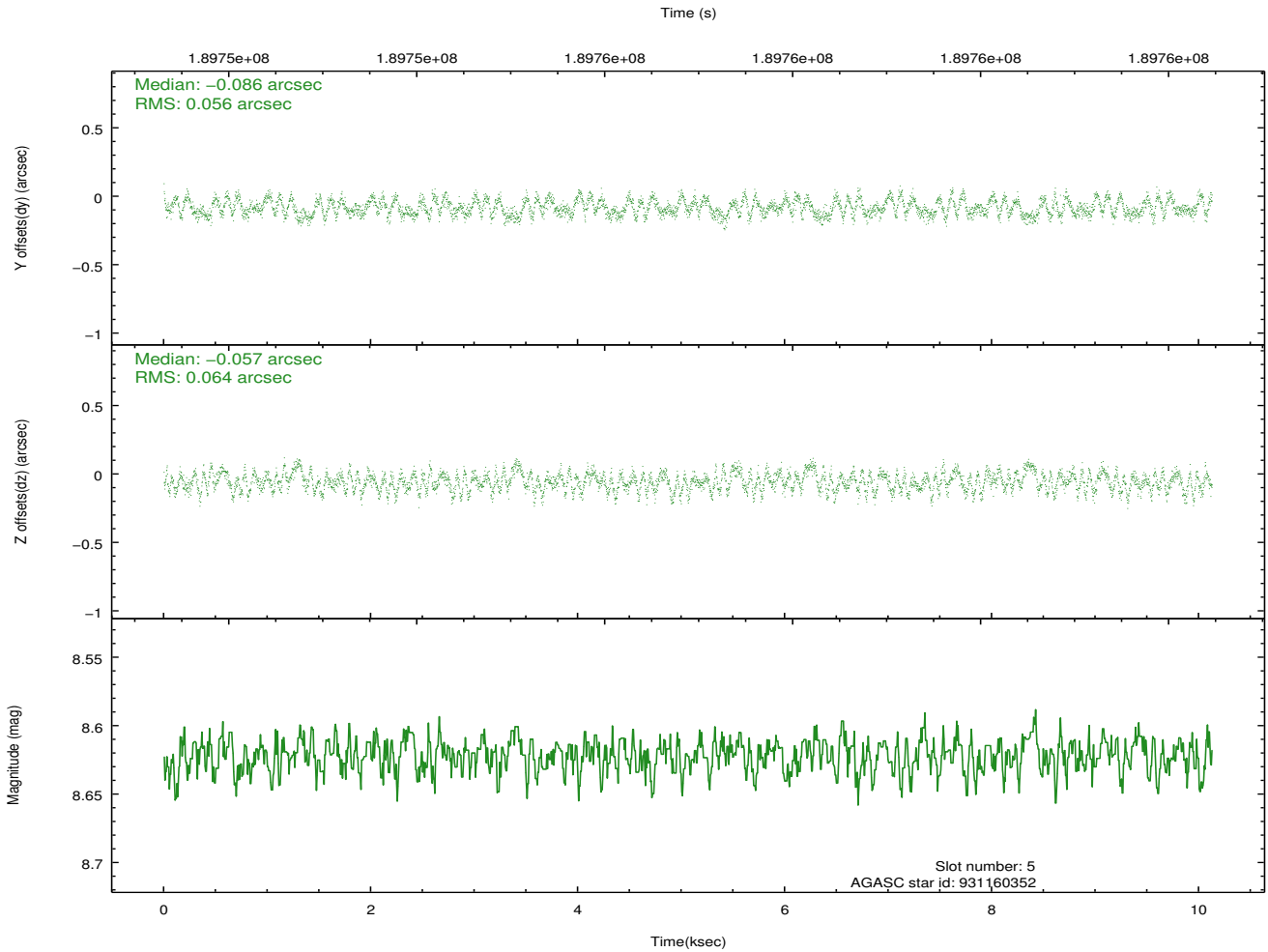
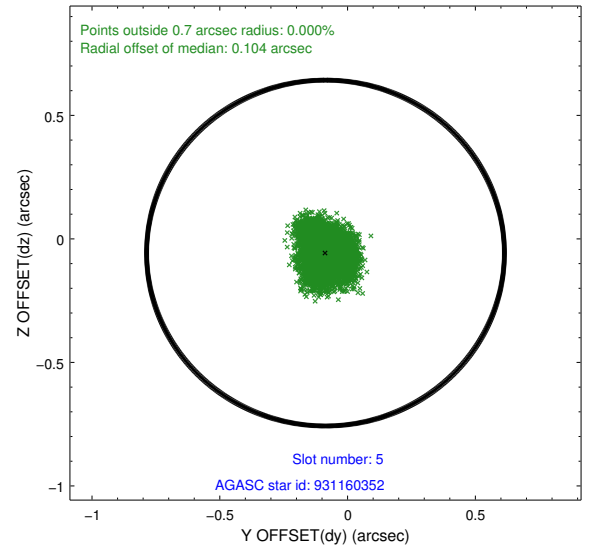
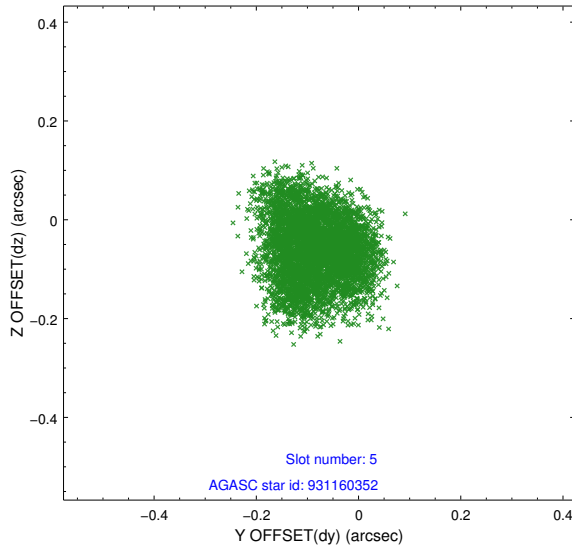
2.4.1 Slot 3



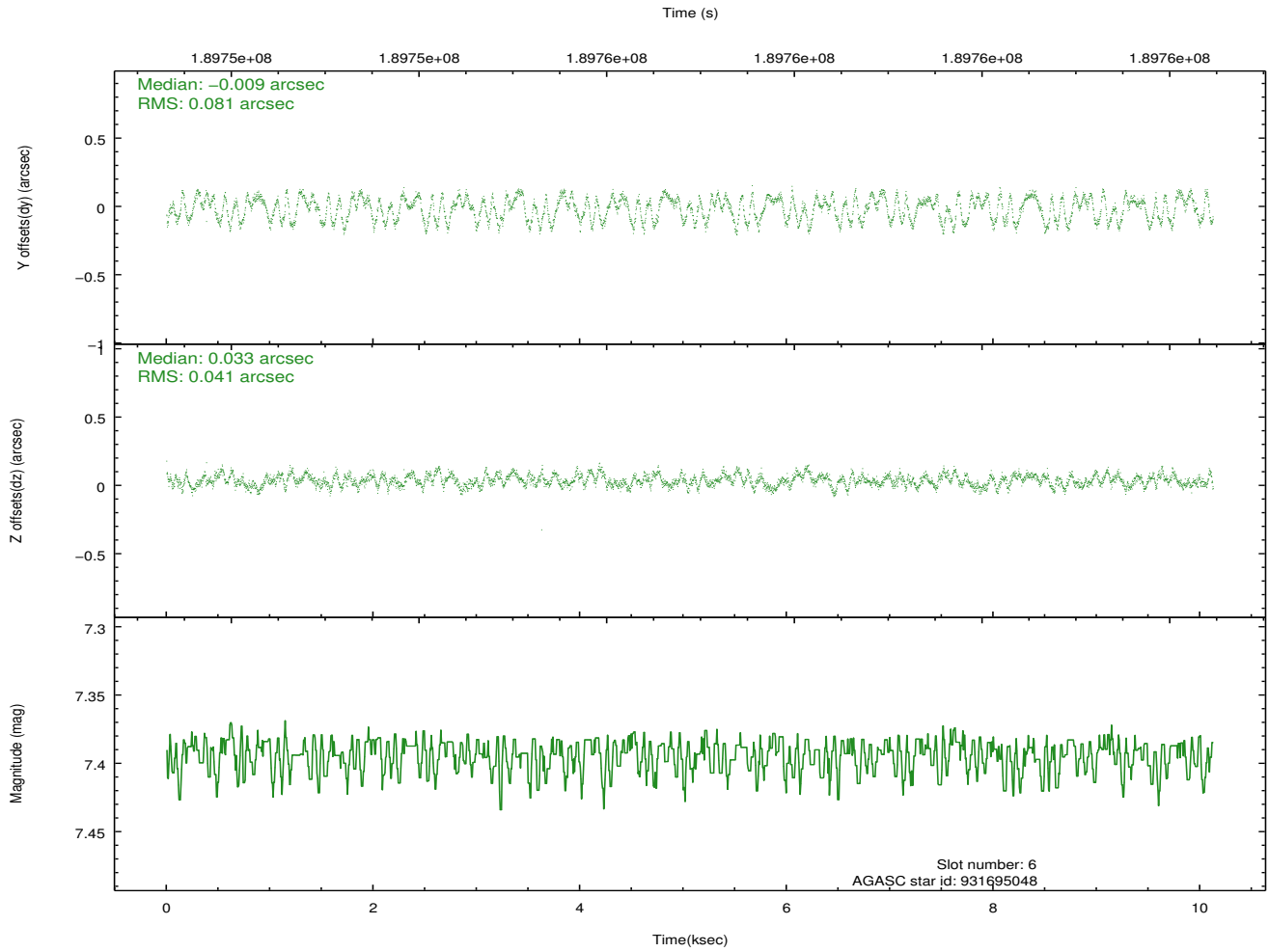
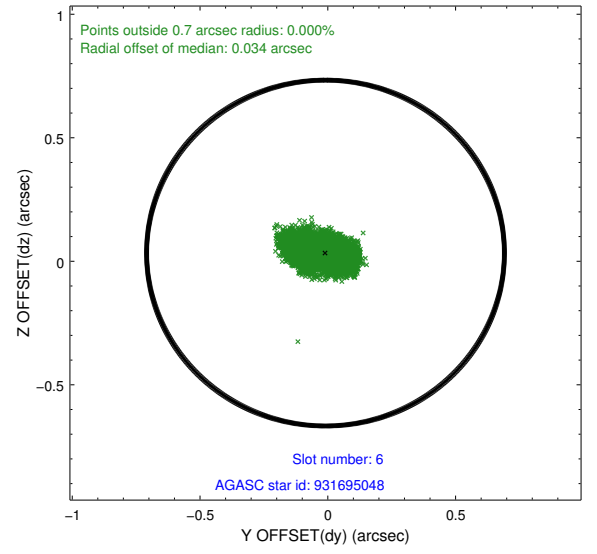
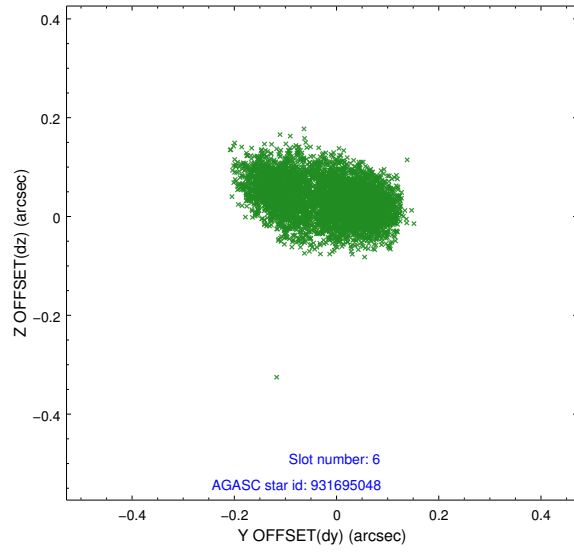
2.4.2 Slot 4



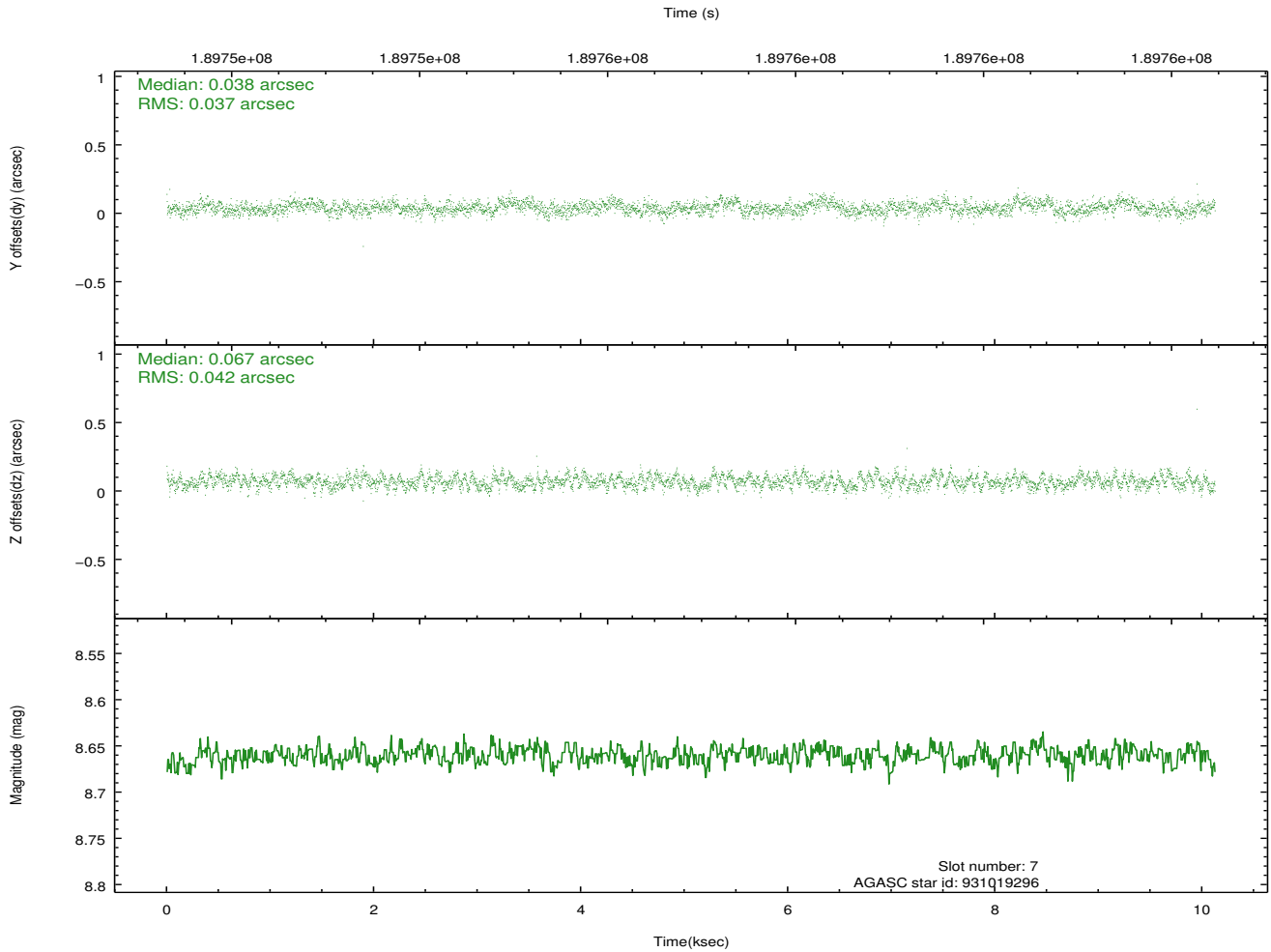
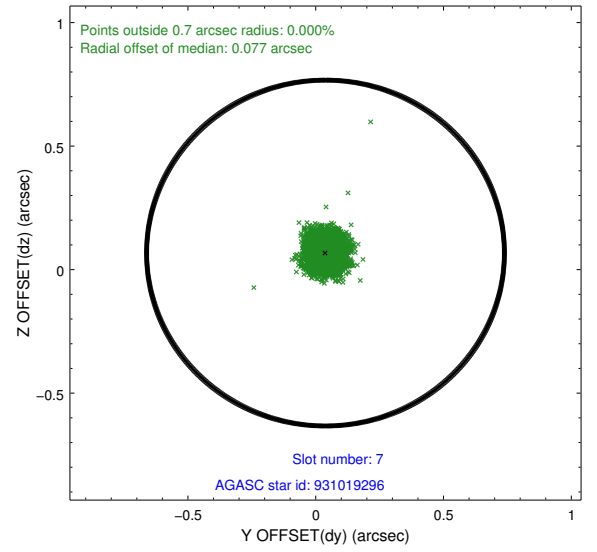
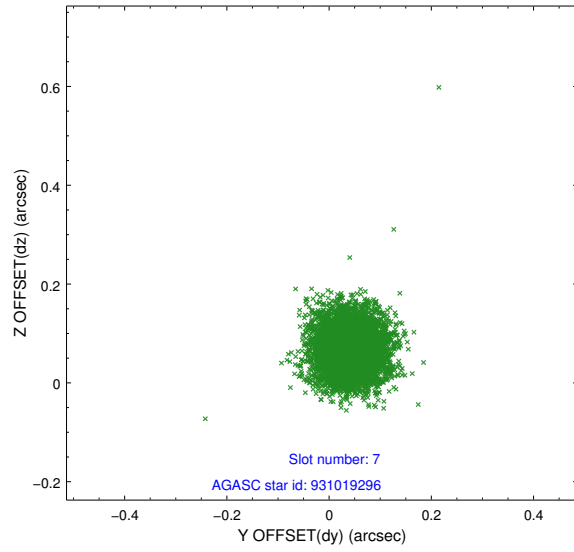
2.4.3 Slot 5



2.4.4 Slot 6

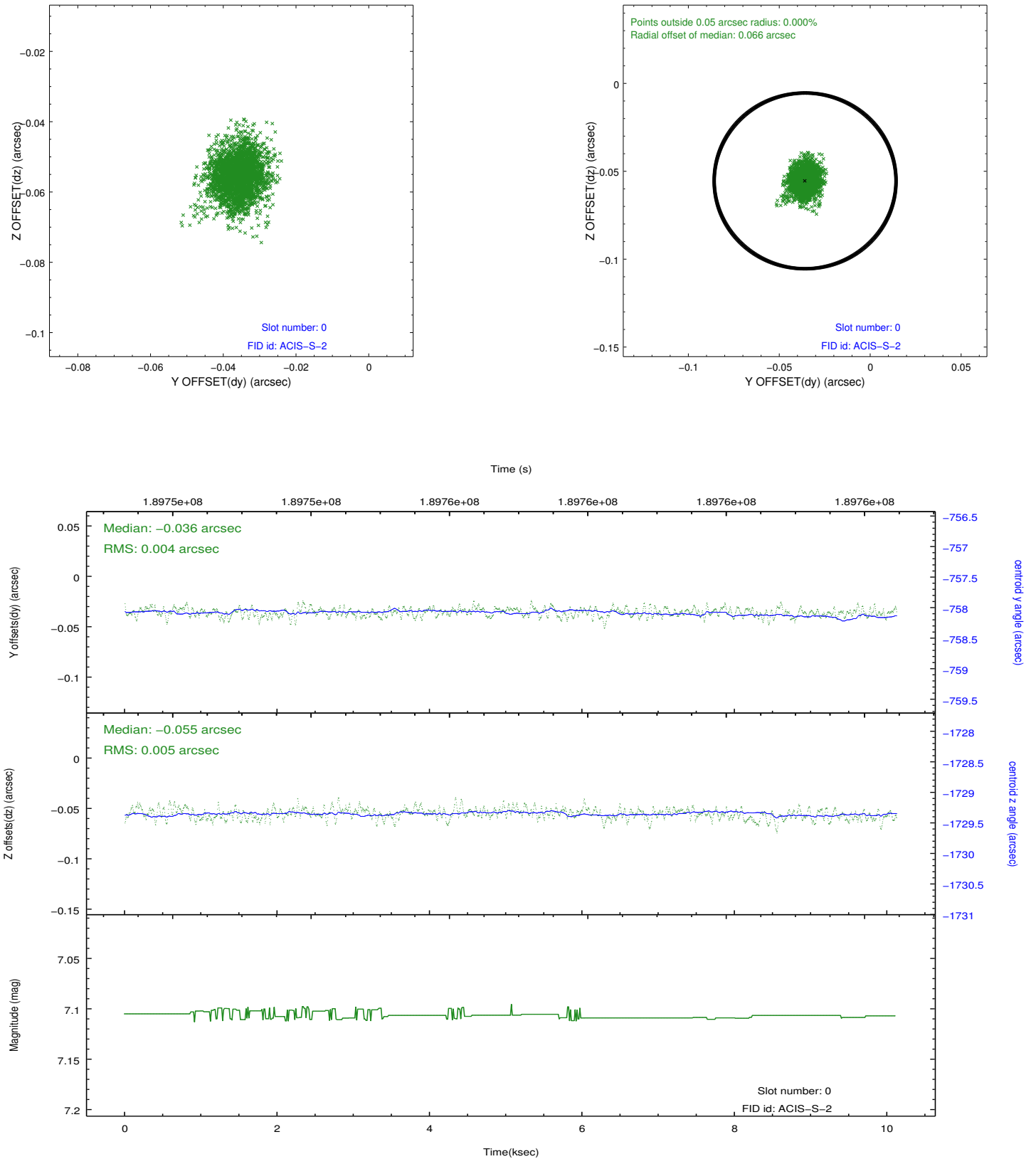


2.4.5 Slot 7

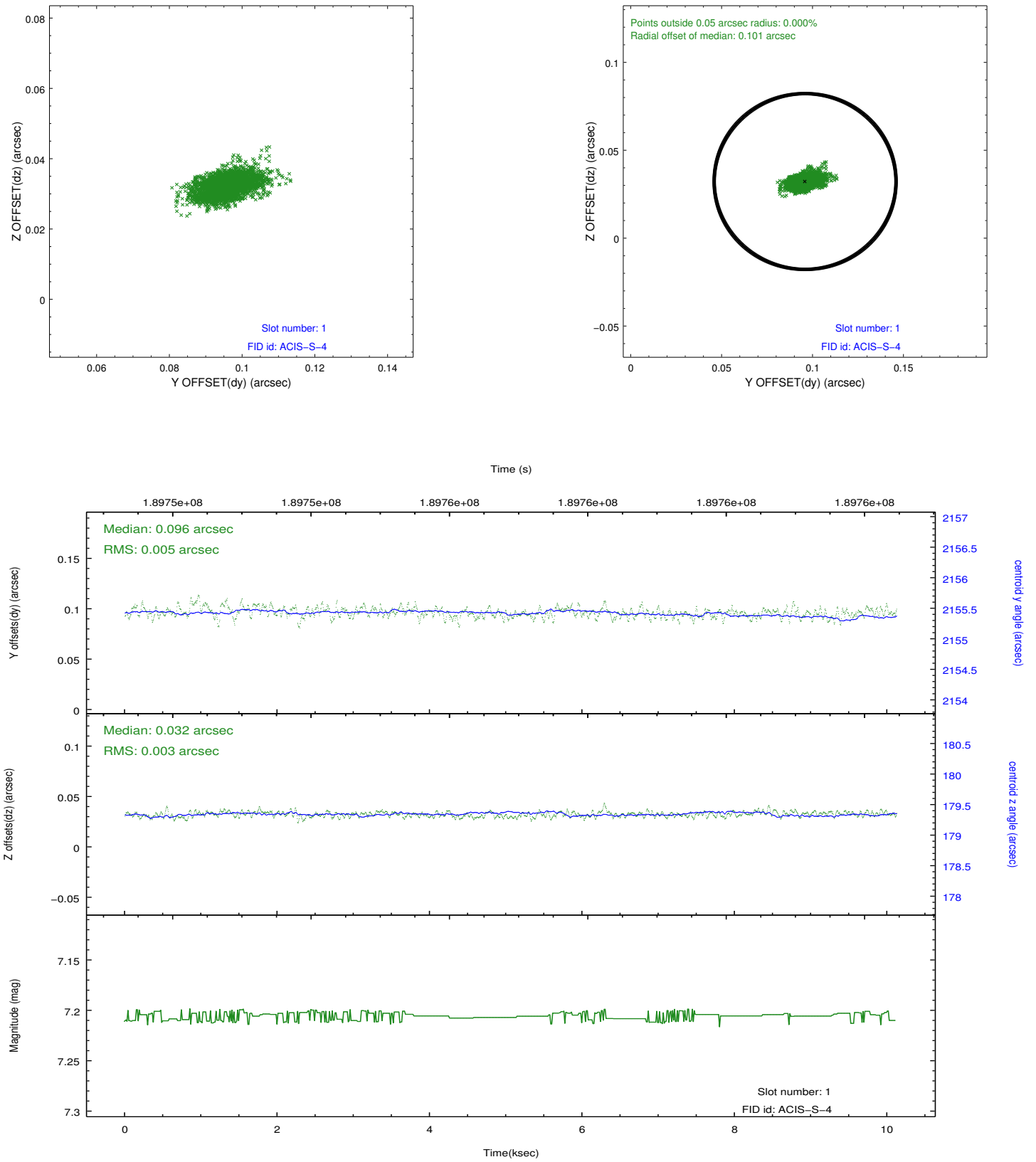


2.5 FID Slots

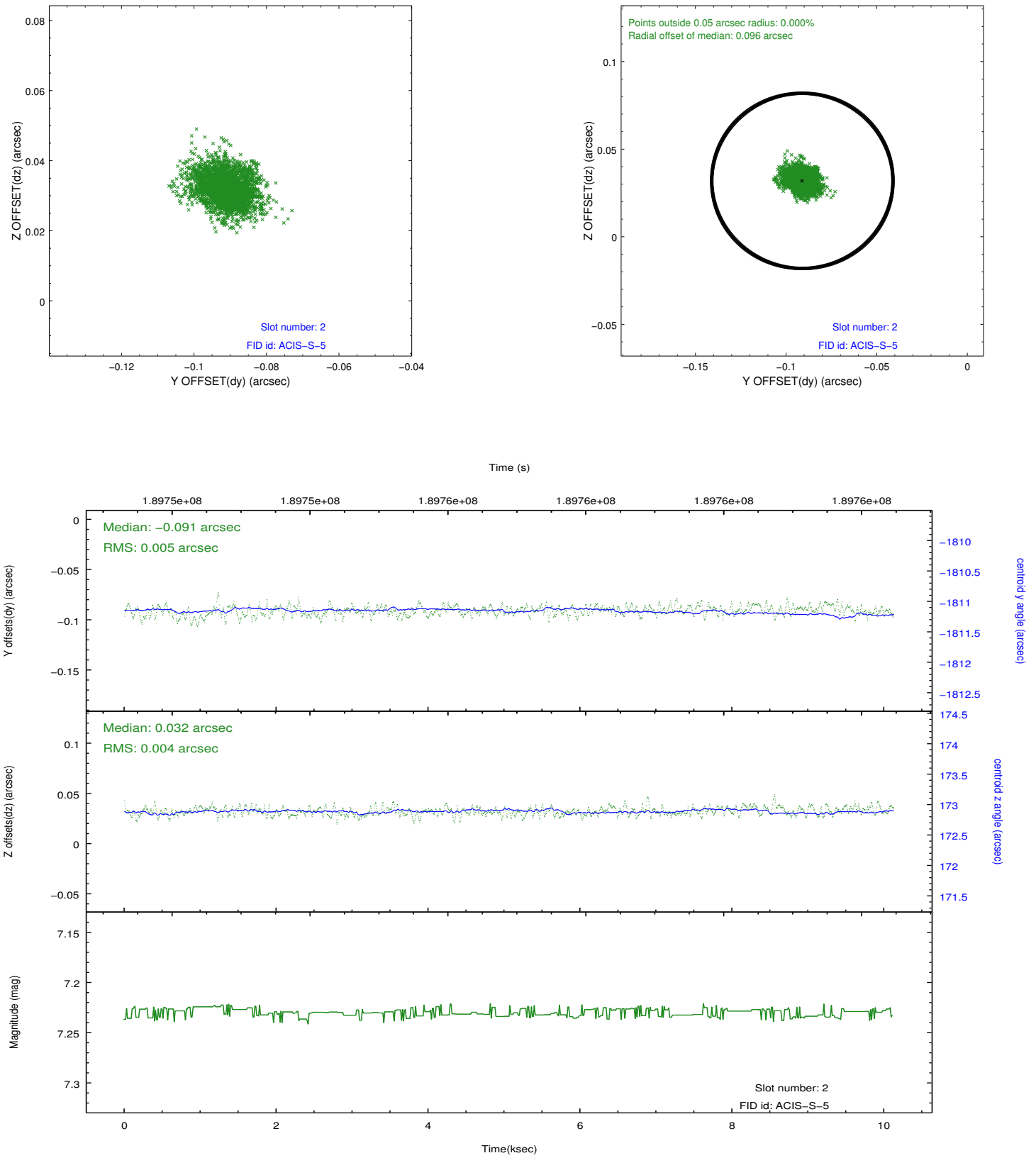
2.5.1 Slot 0



2.5.2 Slot 1



2.5.3 Slot 2



A Summary

A.1 Status

V&V Scientist	Joy Nichols
V&V Date (YYYY-MM-DD)	2012.12.12
V&V Edition	1
V&V Disposition and Status	OK
V&V Charge Time	10.124

A.2 Comments