

V&V Reference Report

L2 ASCDS Version : 7.6.7.2

Observation 4662 - L2 Version 001
Chandra X-Ray Center

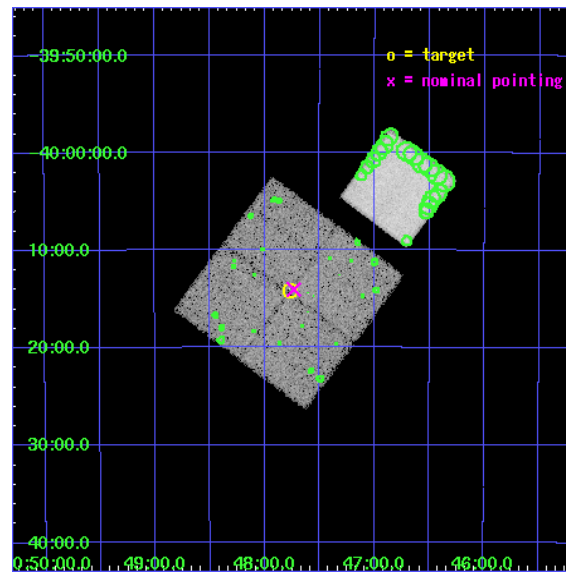
L2 Processing Date : Apr 28 2006

Contents

1	Front	2
2	OBI	3
2.1	OBI	3
2.1.1	Images	3
2.1.2	Bias	3
2.1.3	Parameters	4
2.1.4	Events	4
2.2	Compared Parameters	5
2.3	Aspect	6
2.4	Star Slots	9
2.4.1	Slot 3	9
2.4.2	Slot 4	10
2.4.3	Slot 5	11
2.4.4	Slot 6	12
2.4.5	Slot 7	13
2.5	FID Slots	14
2.5.1	Slot 0	14
2.5.2	Slot 1	15
2.5.3	Slot 2	16
3	Point Sources	17
A	Summary	18
A.1	Status	18
A.2	Comments	18

1 Front

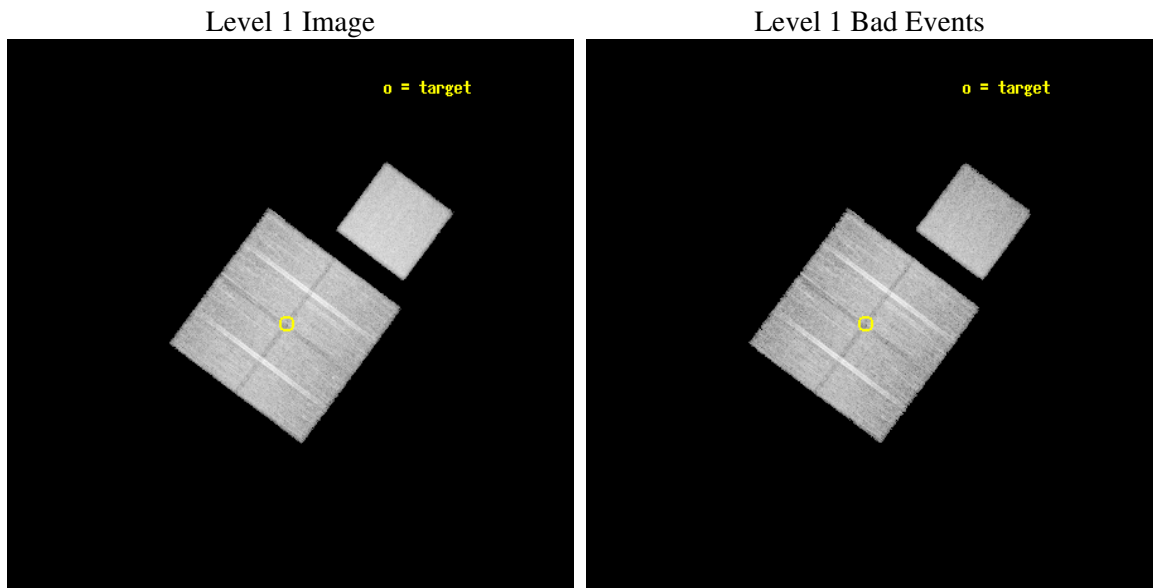
seq_num	500481
obs_id	4662
title	The Energetics and Host Galaxies of X-Ray Flashes
observer	Dr Derek Fox
object	XRF040701
dtcycle	0
cycle	P
ra_targ	311.942917
dec_targ	-40.236944
ra_nom	311.93352906031
dec_nom	-40.234093270248
roll_nom	36.671292069785
revision	2
ontime	18984.318013012
livetime	18736.273922121
ontime0	18987.458993256
ontime1	18987.458993256
ontime2	18990.599963486
ontime3	18984.318013012
ontime7	18990.599963486
l2events	133081



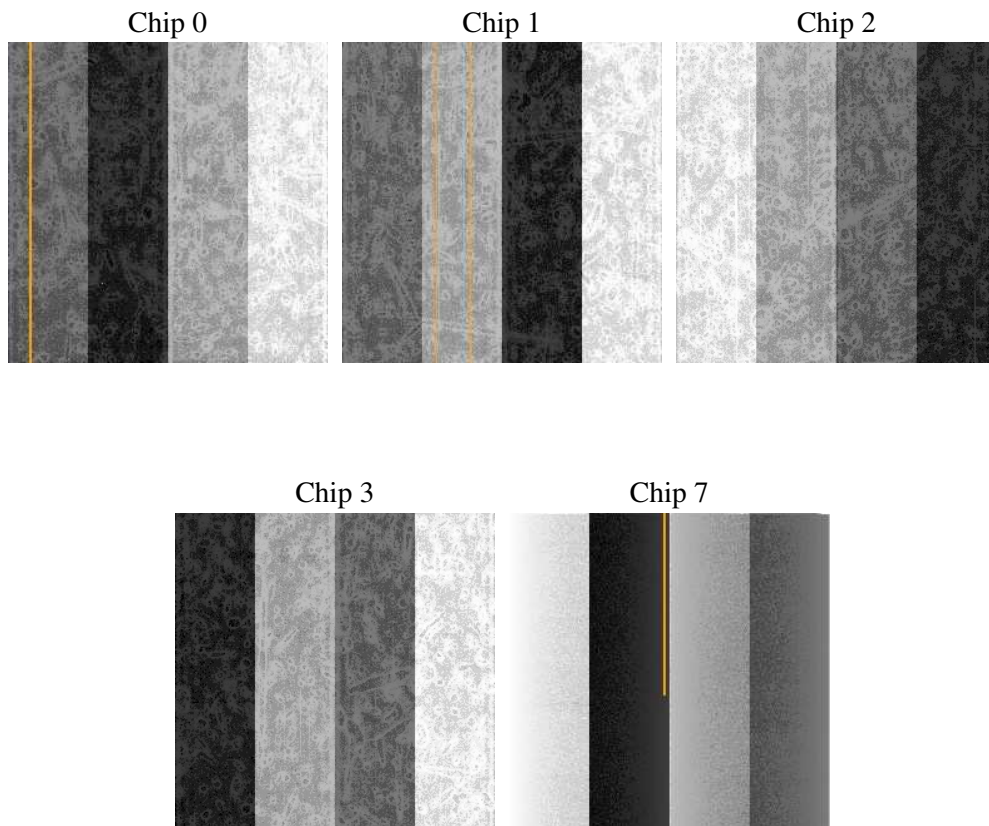
2 OBI

2.1 OBI

2.1.1 Images



2.1.2 Bias



2.1.3 Parameters

obi_num	0
ascdsver	7.6.7.2
caldbver	3.2.1
date	2006-04-28T15:15:49
revision	2

sched_exp_time	18816.059000
ontime	19634.446442068
ontime0	19637.587412417
ontime1	19637.587412417
ontime2	19640.728392541
ontime3	19634.446442068
ontime7	19640.728392541
l1events	743434

2.1.4 Events

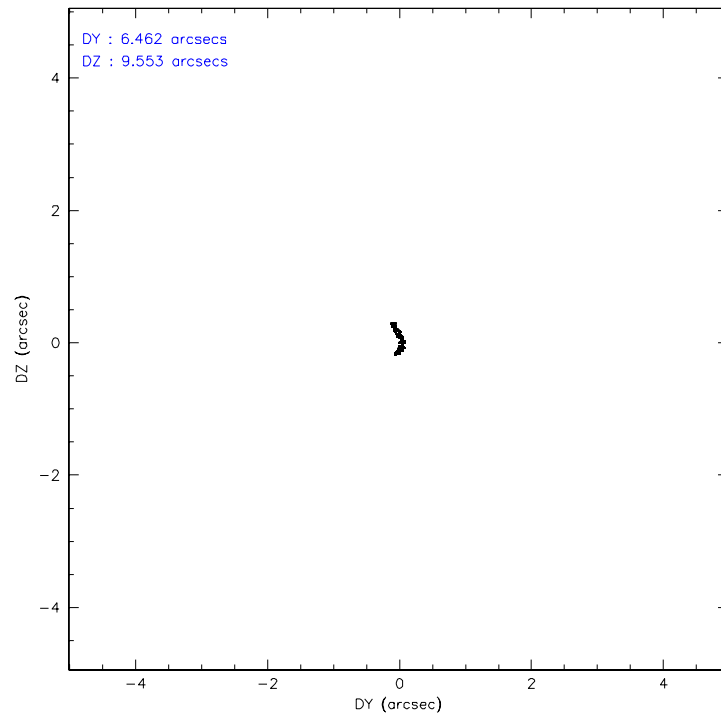
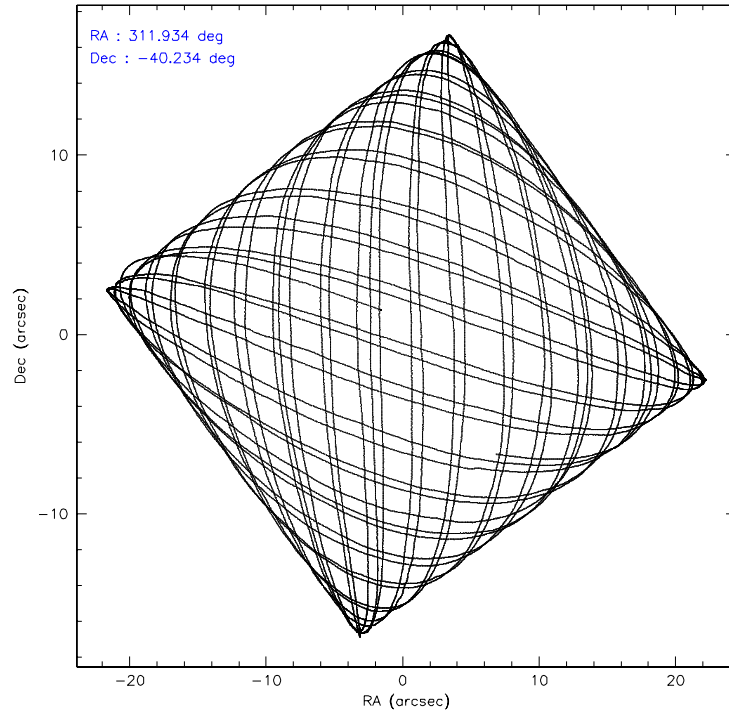
	ccd 0	ccd 1	ccd 2	ccd 3	ccd 7
level 1 events	132637	132161	144495	141056	193085
rejected events	114117	113495	126397	123297	121443
rejected %	86%	85%	87%	87%	62%

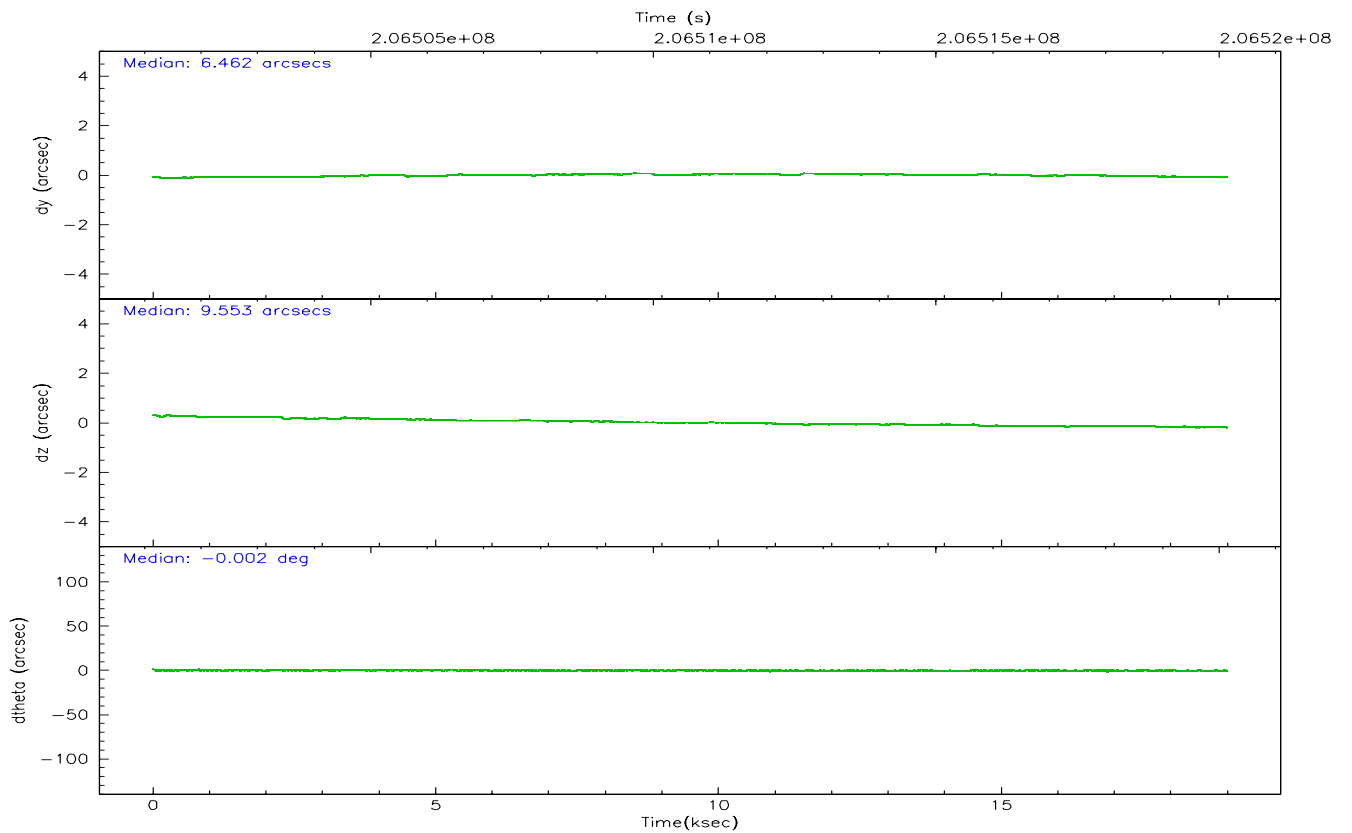
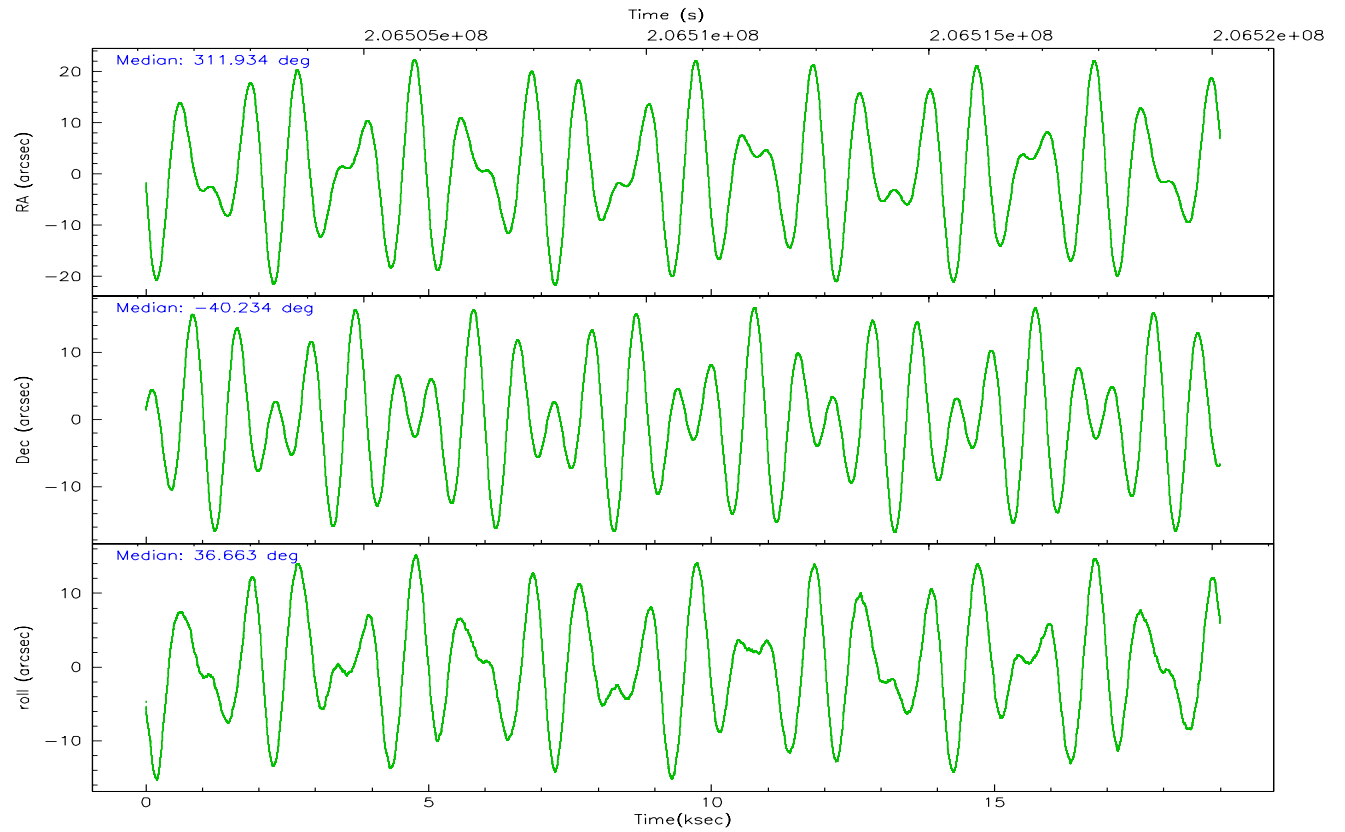
	ccd 0	ccd 1	ccd 2	ccd 3	ccd 7
grade 0 events	9003	8244	8924	8618	4080
	6%	6%	6%	6%	2%
grade 1 events	72	77	107	93	98
	0%	0%	0%	0%	0%
grade 2 events	3713	3980	3674	3339	18565
	2%	3%	2%	2%	9%
grade 3 events	1735	1803	1645	1622	3610
	1%	1%	1%	1%	1%
grade 4 events	1598	1808	1621	1743	3509
	1%	1%	1%	1%	1%
grade 5 events	5753	6069	5424	6447	12494
	4%	4%	3%	4%	6%
grade 6 events	3044	3432	2835	3020	44394
	2%	2%	1%	2%	22%
grade 7 events	107719	106748	120265	116174	106335
	81%	80%	83%	82%	55%

2.2 Compared Parameters

Parameter	Planned	Actual	Parameter	Planned	Actual
Instrument	ACIS	ACIS	Obspar format version number	6	6
Detector	ACIS-01237	ACIS-01237	Obspar file type	PREDICTED	ACTUAL
Grating	NONE	NONE	Obspar update status	NONE	UPDATED
Data mode	VFAINT	VFAINT	On-chip summing requested	N	N
Observation mode	POINTING	POINTING	Subarray requested	NONE	NONE
Pointing RA	311.919468	311.9335290603095	Alternating exposures requested	N	N
Pointing Dec	-40.259287	-40.23409327024766	Primary exposure time	0.000000	3.1
Pointing Roll	36.453523	36.67129206978473			
SIM focus pos (mm)	-0.782348	-0.7809083437167272			
SIM defocus (mm)	0	0.001439871863259334			
SIM translation stage pos (mm)	-233.592463	-233.5874344608287			
SIM translation stage offset (mm)	0	-0.005018542100998502			
Observation start time	206501334.184000	206500015.96679			
Observation start date	2004-07-18T01:27:50	2004-07-18T01:06:55			
Observation end time	206520150.184000	206520386.81769			
Observation end date	2004-07-18T06:41:26	2004-07-18T06:46:26			
Read mode	TIMED	TIMED			

2.3 Aspect



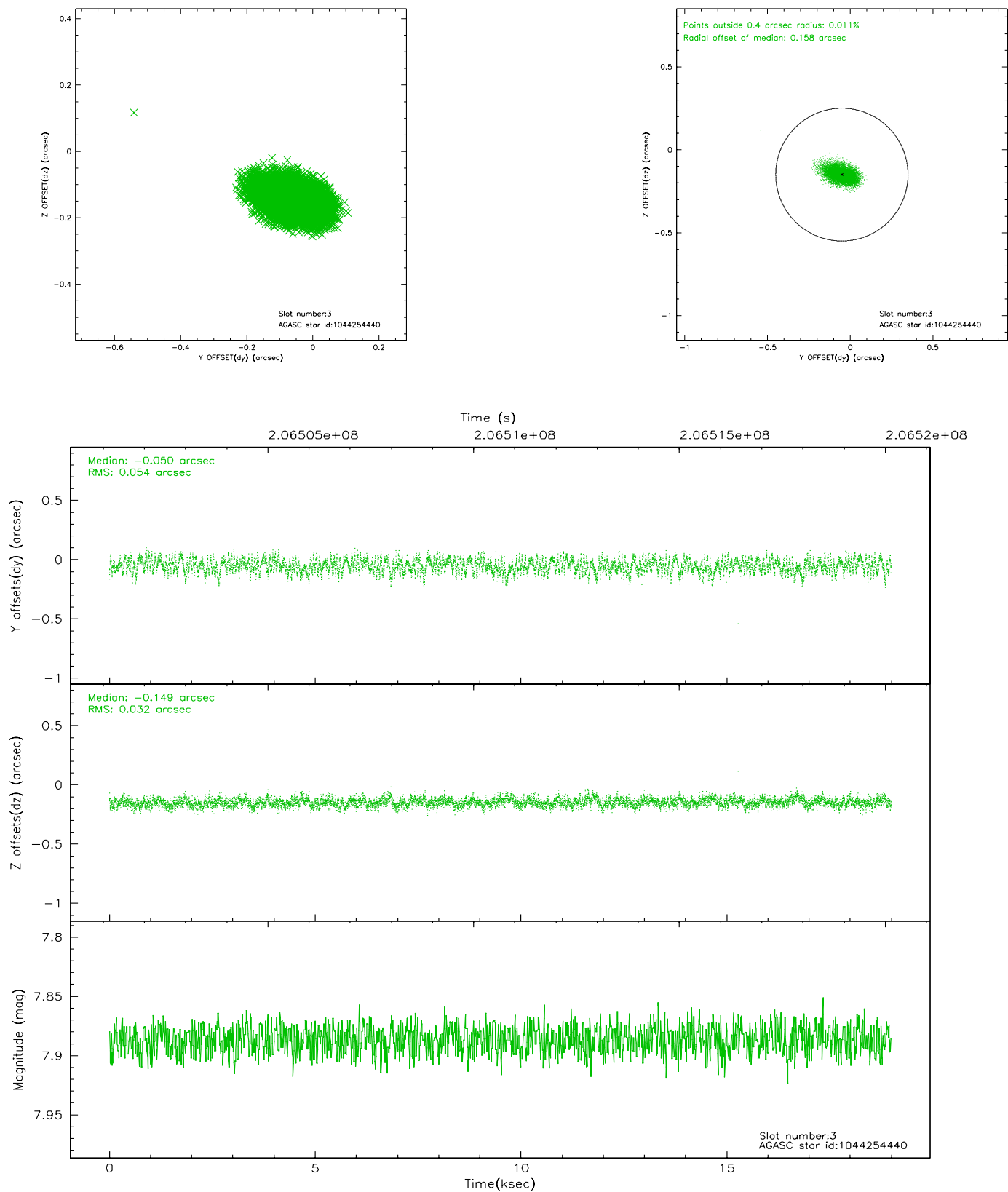


Slot Statistics

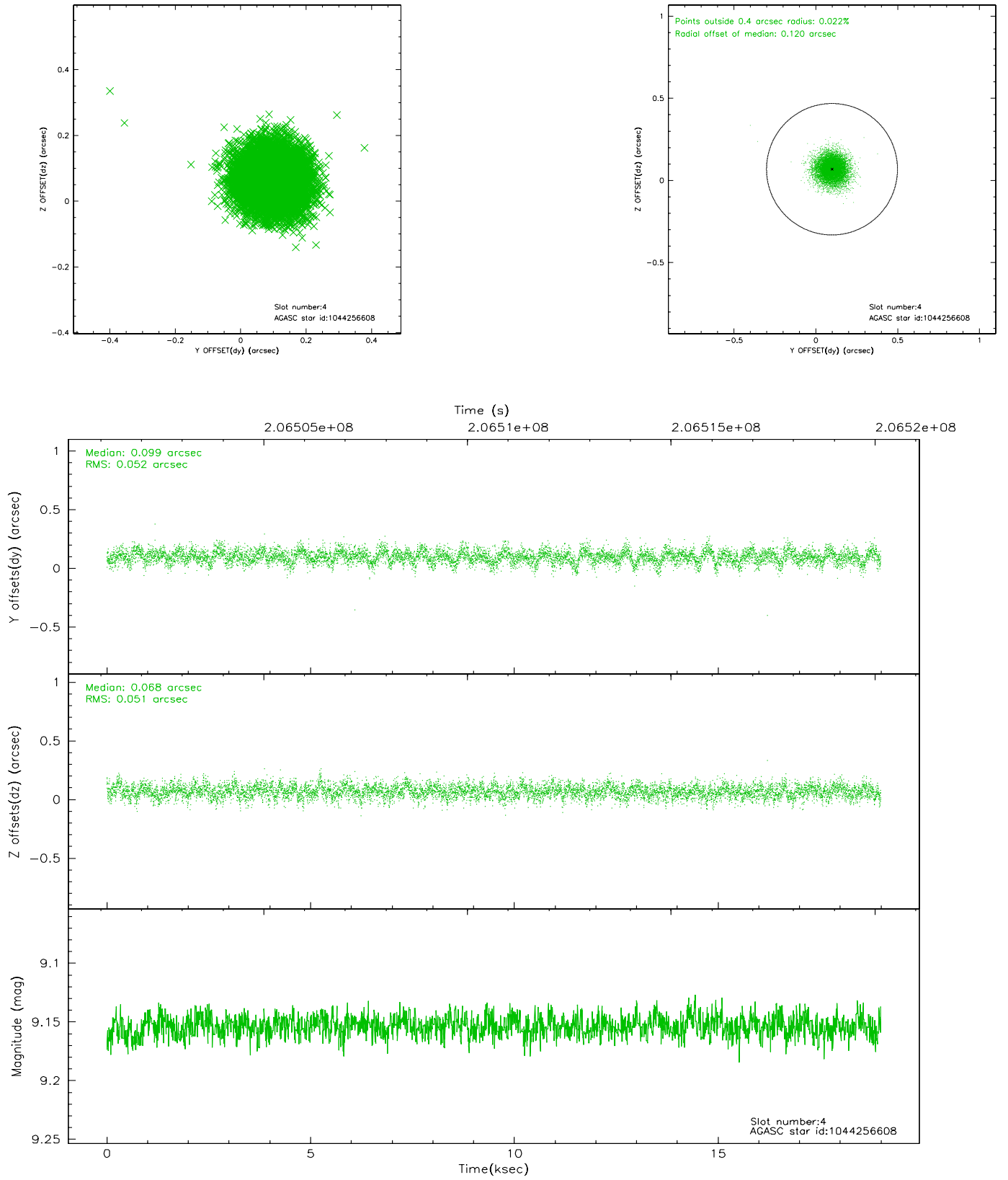
slot	status	id	mag	n_pts	med_dy	med_dz	dr1	dr2	ra	dec	mean_y	mean_z
0	FID	ACIS-I-1	7.24	4633	-0.028	0.069	0.007	0.012	0.000000	0.000000	933.22	-832.96
1	FID	ACIS-I-5	7.23	4633	-0.114	0.014	0.006	0.010	0.000000	0.000000	-1814.87	1064.36
2	FID	ACIS-I-6	7.26	4633	0.050	-0.013	0.008	0.012	0.000000	0.000000	398.60	1709.08
3	GUIDE	1044254440	7.89	9267	-0.050	-0.149	0.066	0.110	310.924905	-40.060336	-1787.91	2191.77
4	GUIDE	1044256608	9.15	9260	0.099	0.068	0.077	0.127	311.405786	-40.800053	-2285.00	-737.12
5	GUIDE	1044260200	7.39	9267	-0.016	-0.115	0.060	0.091	312.080069	-40.001195	907.90	483.77
6	GUIDE	1044260208	9.18	9262	0.065	0.081	0.084	0.136	311.587523	-40.801920	-1888.86	-1035.12
7	GUIDE	1044388888	9.00	9257	-0.098	0.115	0.086	0.140	312.593988	-40.608474	730.36	-2113.15

2.4 Star Slots

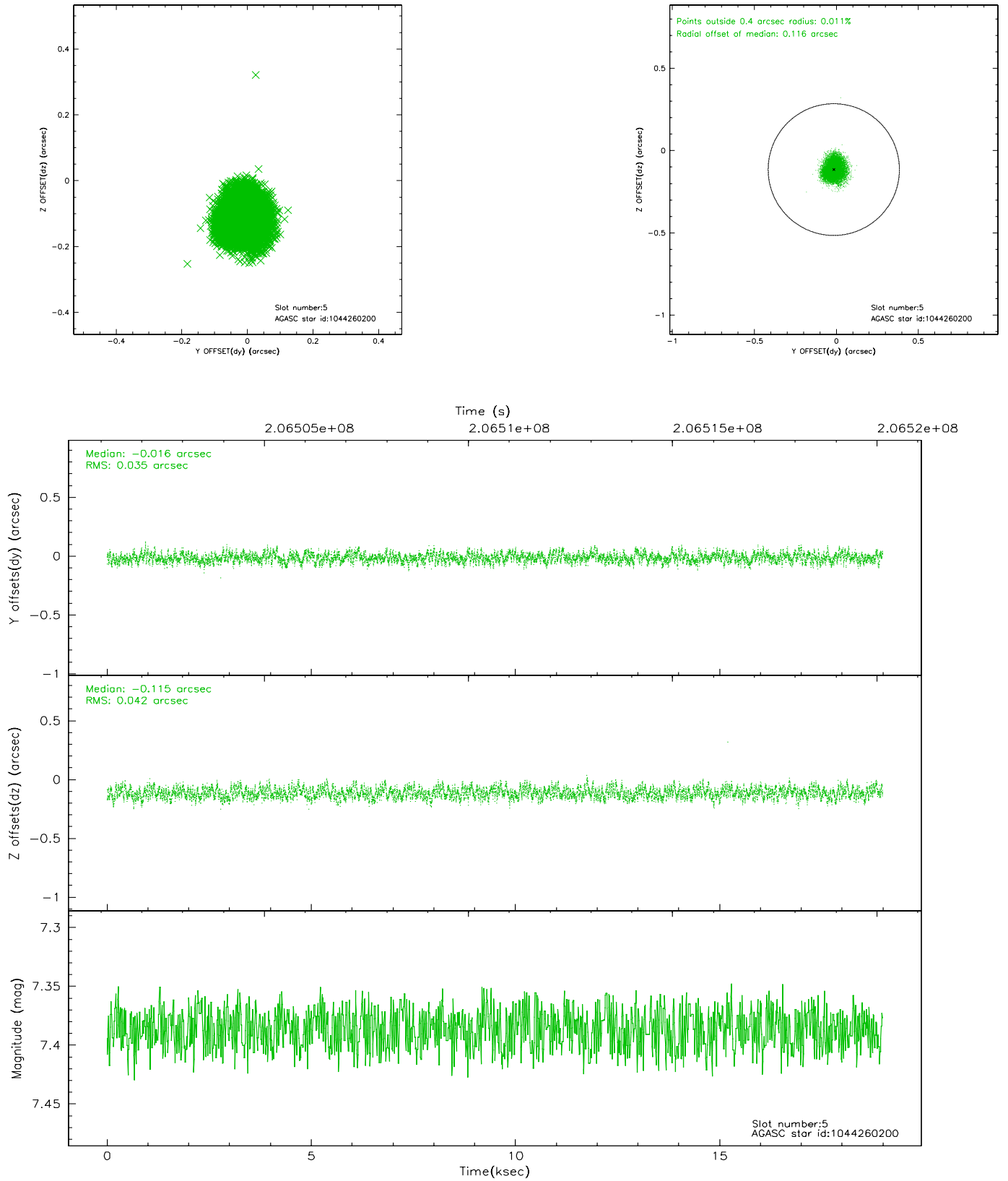
2.4.1 Slot 3



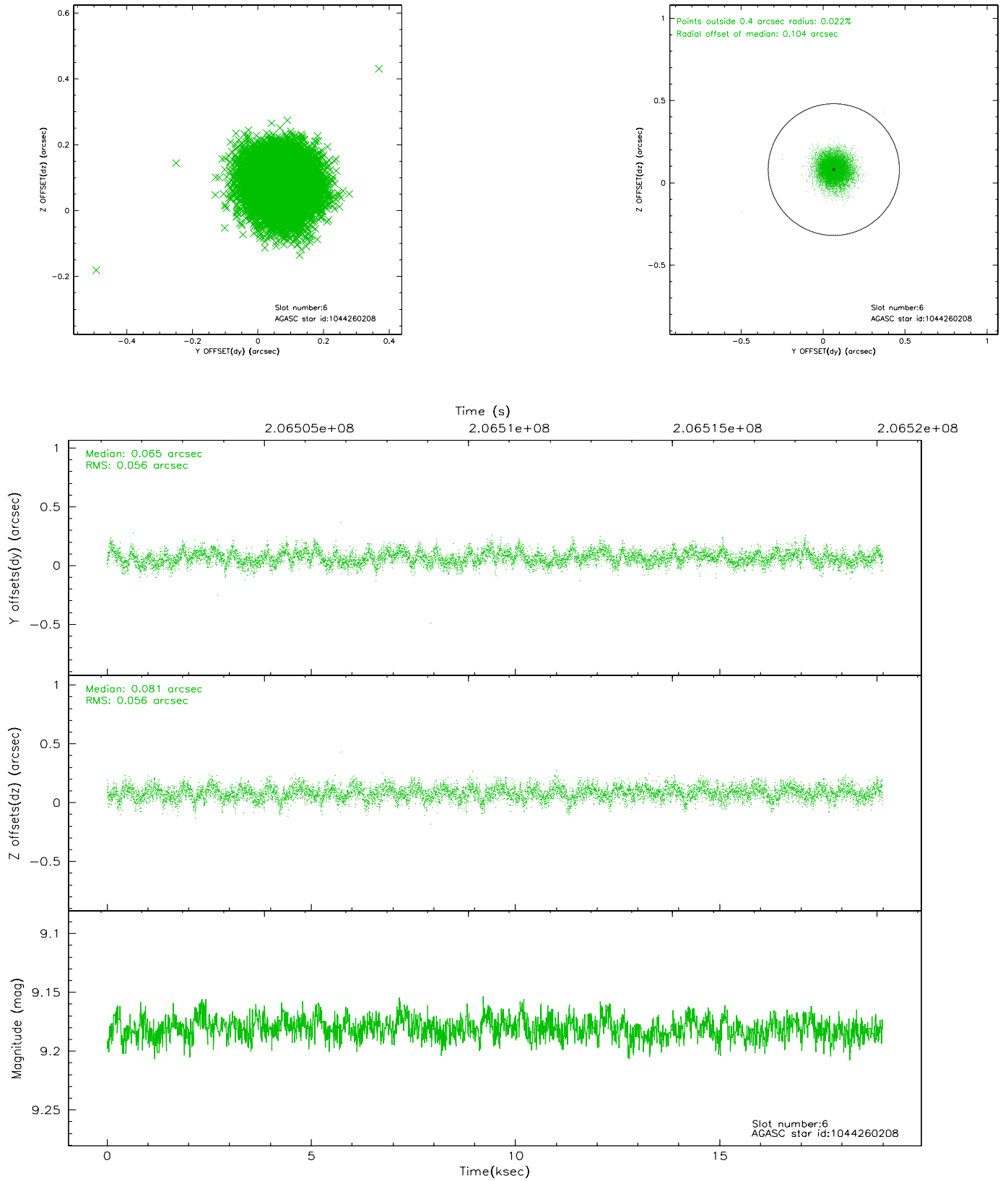
2.4.2 Slot 4



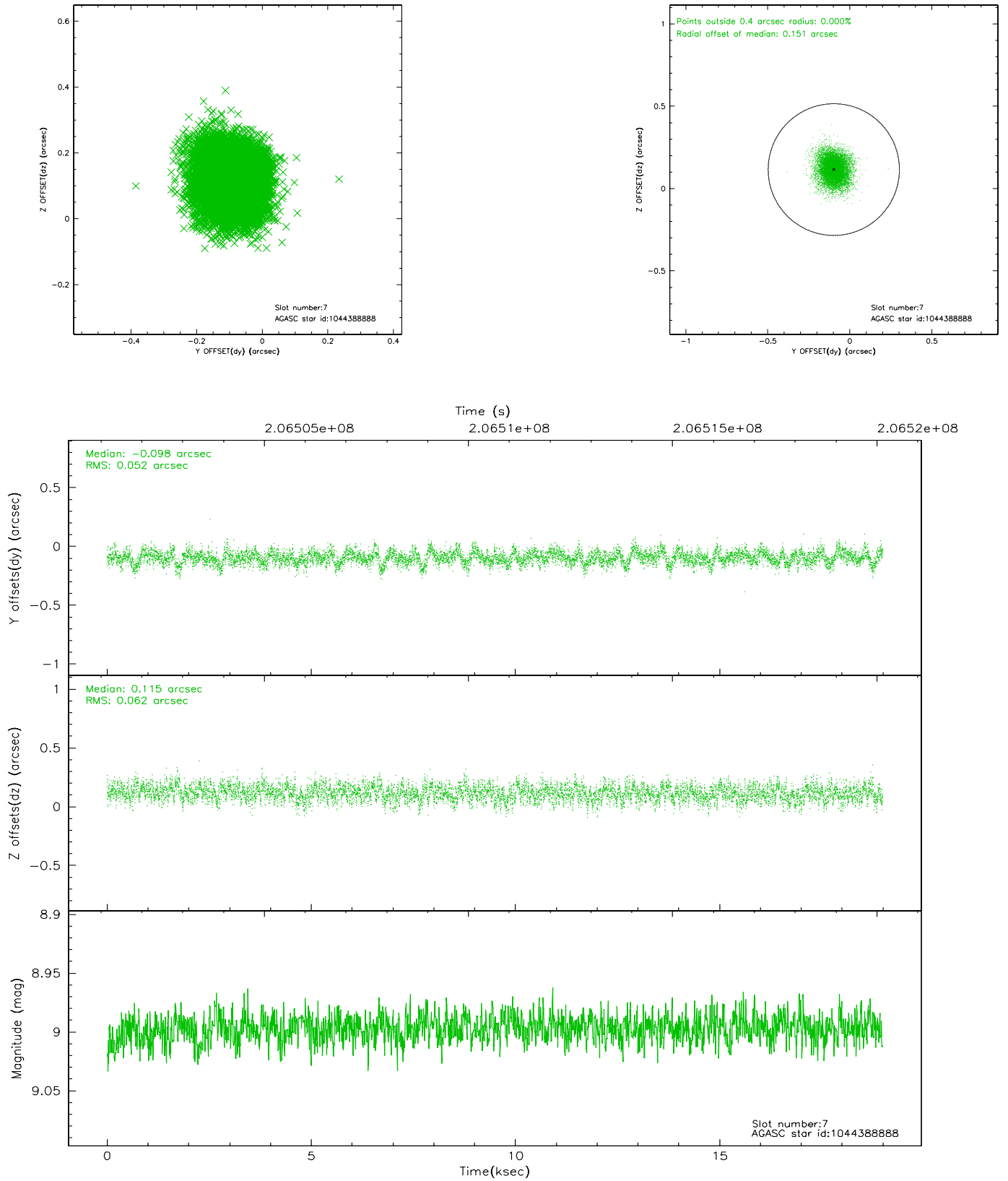
2.4.3 Slot 5



2.4.4 Slot 6

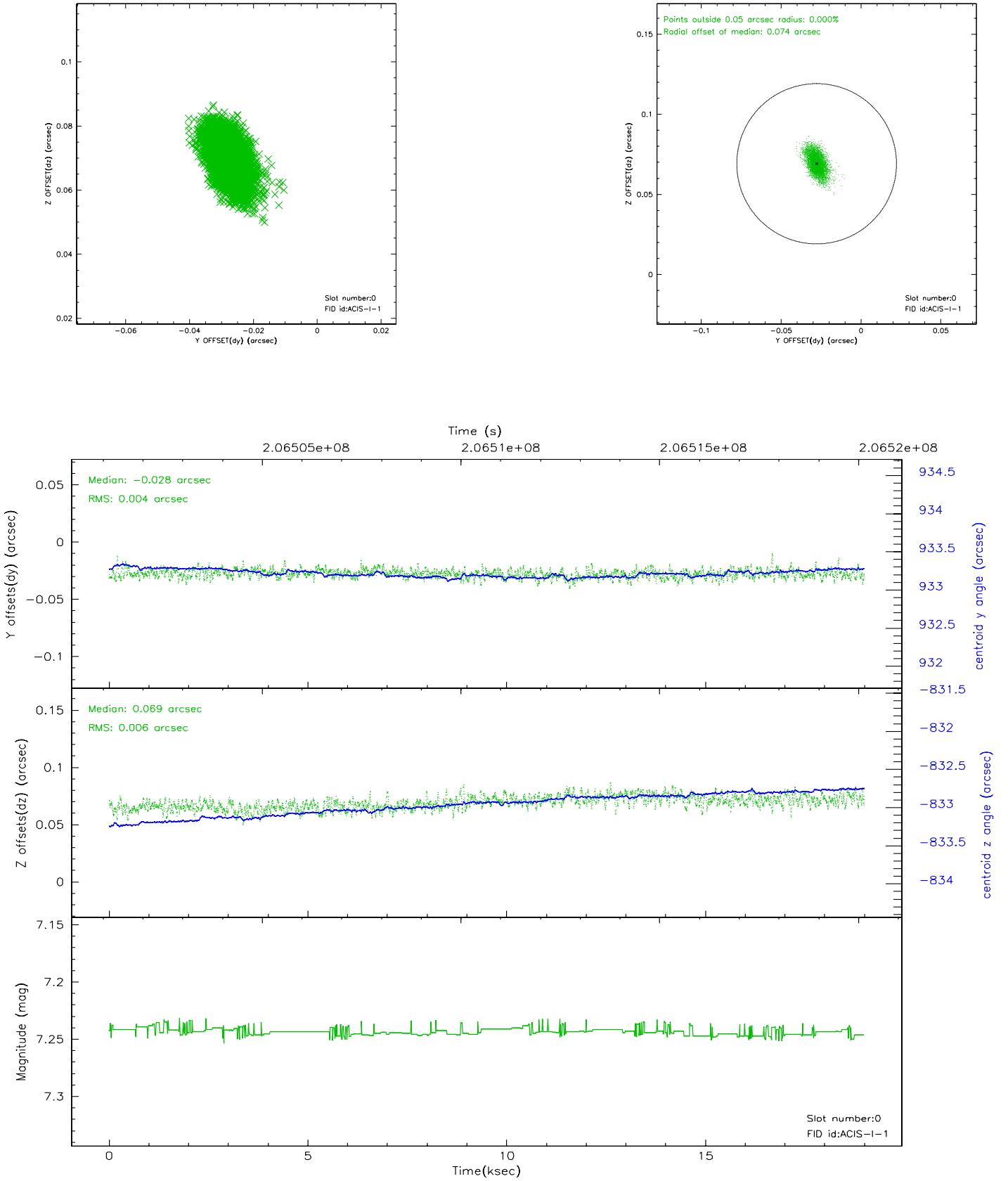


2.4.5 Slot 7

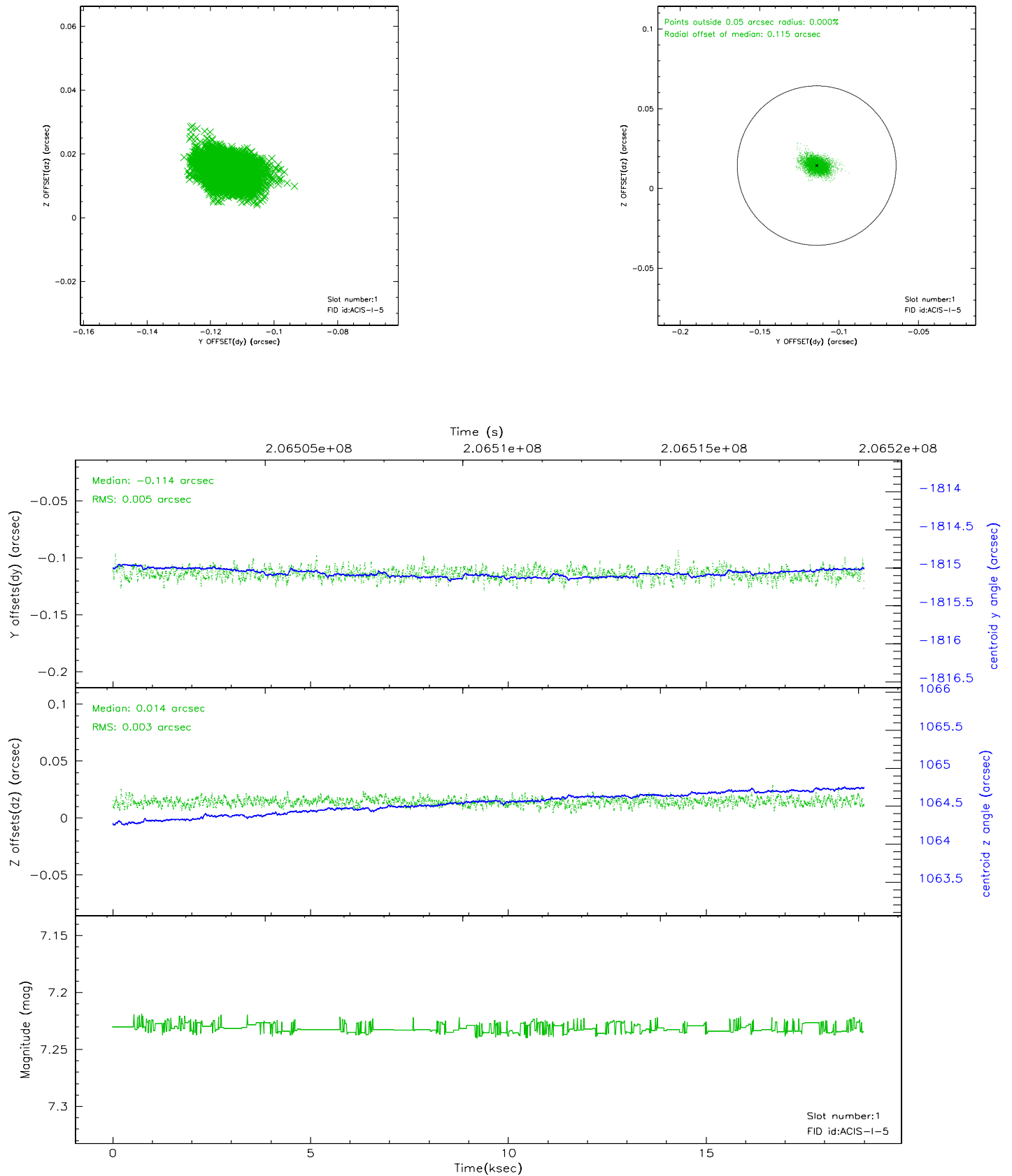


2.5 FID Slots

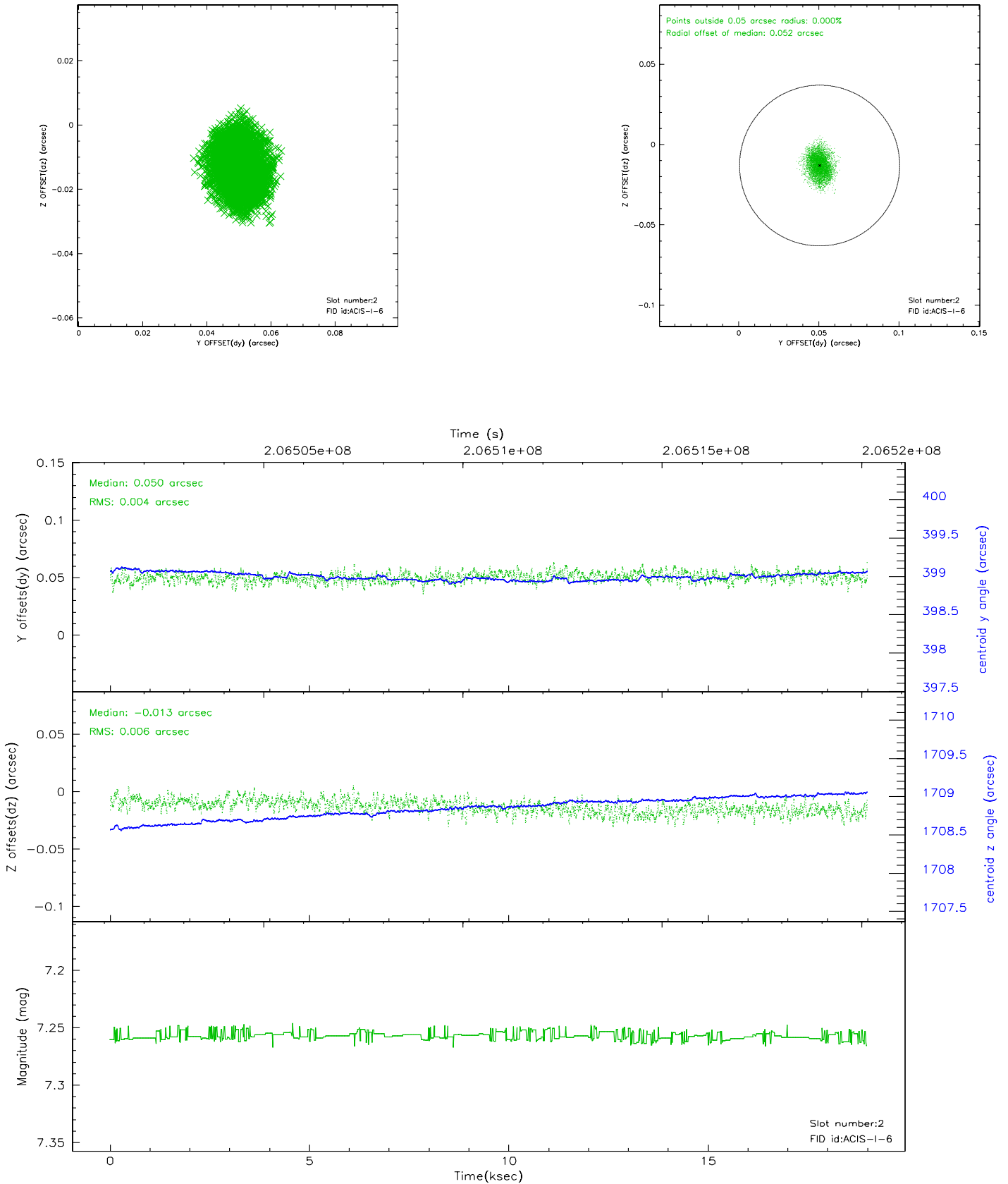
2.5.1 Slot 0



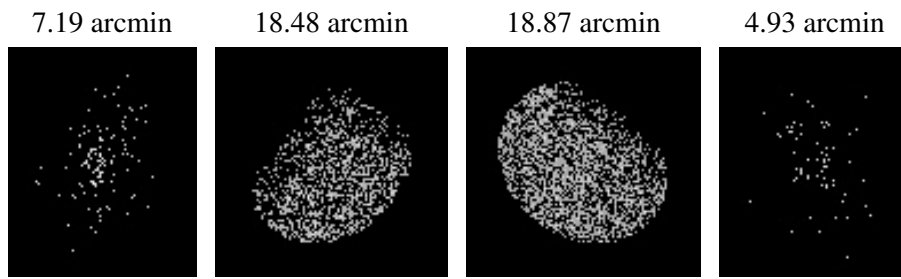
2.5.2 Slot 1



2.5.3 Slot 2



3 Point Sources



A Summary

A.1 Status

V&V Scientist	Jen Lauer
V&V Date (YYYY-MM-DD)	2006.04.28
V&V Edition	1
V&V Disposition and Status	OK
V&V Charge Time	18.99

A.2 Comments

Monitor constraint met. Roll preference not met.