

# V&V Reference Report

## L2 ASCDS Version : 7.6.8

Observation 4637 - L2 Version 002  
Chandra X-Ray Center

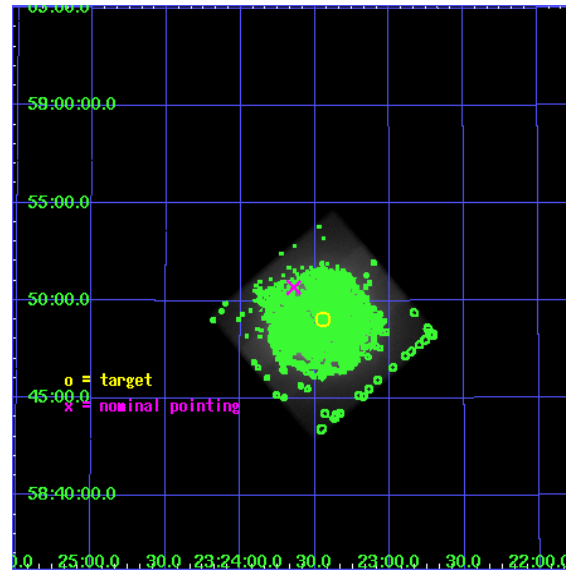
L2 Processing Date : Jul 27 2006

## Contents

<b>1</b>	<b>Front</b>	<b>2</b>
<b>2</b>	<b>OBI</b>	<b>3</b>
2.1	OBI . . . . .	3
2.1.1	Images . . . . .	3
2.1.2	Parameters . . . . .	4
2.1.3	Events . . . . .	4
2.2	Compared Parameters . . . . .	5
2.3	Aspect . . . . .	6
2.4	Star Slots . . . . .	9
2.4.1	Slot 3 . . . . .	9
2.4.2	Slot 4 . . . . .	10
2.4.3	Slot 5 . . . . .	11
2.4.4	Slot 6 . . . . .	12
2.4.5	Slot 7 . . . . .	13
2.5	FID Slots . . . . .	14
2.5.1	Slot 0 . . . . .	14
2.5.2	Slot 1 . . . . .	15
2.5.3	Slot 2 . . . . .	16
<b>3</b>	<b>Point Sources</b>	<b>17</b>
<b>A</b>	<b>Summary</b>	<b>18</b>
A.1	Status . . . . .	18
A.2	Comments . . . . .	18

# 1 Front

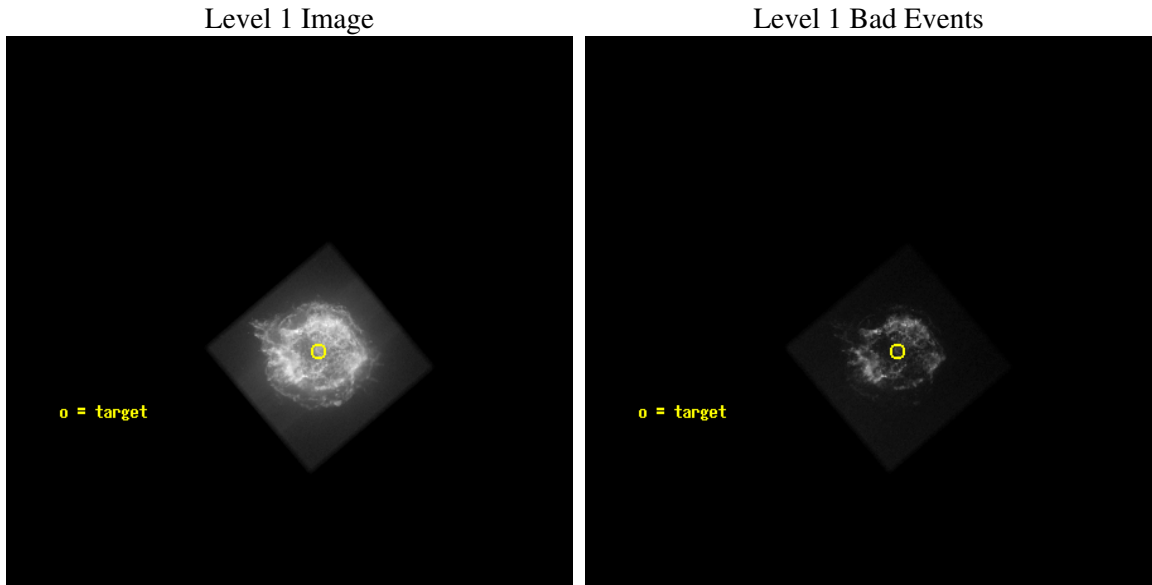
seq_num	500459
obs_id	4637
title	The Cassiopeia A Explosion: Getting at the Core Issues
observer	Dr Una Hwang
object	Cassiopeia A
dtcycle	0
cycle	P
ra_targ	350.86125
dec_targ	58.8175
ra_nom	350.91044003224
dec_nom	58.844868864308
roll_nom	49.767539333952
revision	3
ontime	165729.0
livetime	163492.42364454
ontime7	165729.0
l2events	49083100



## 2 OBI

### 2.1 OBI

#### 2.1.1 Images



### 2.1.2 Parameters

obi_num	0
ascdsver	7.6.8
caldbver	3.2.2
date	2006-07-20T21:04:03
revision	3

sched_exp_time	165579.539000
ontime	165853.20660987
ontime7	165853.20660987
l1events	52624526

### 2.1.3 Events

	ccd 7
level 1 events	52624526
rejected events	3053788
rejected %	5%

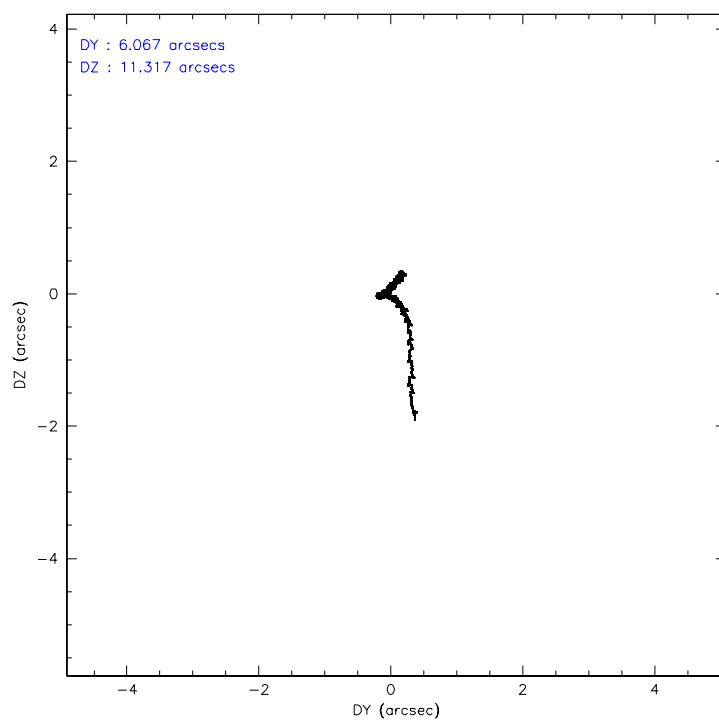
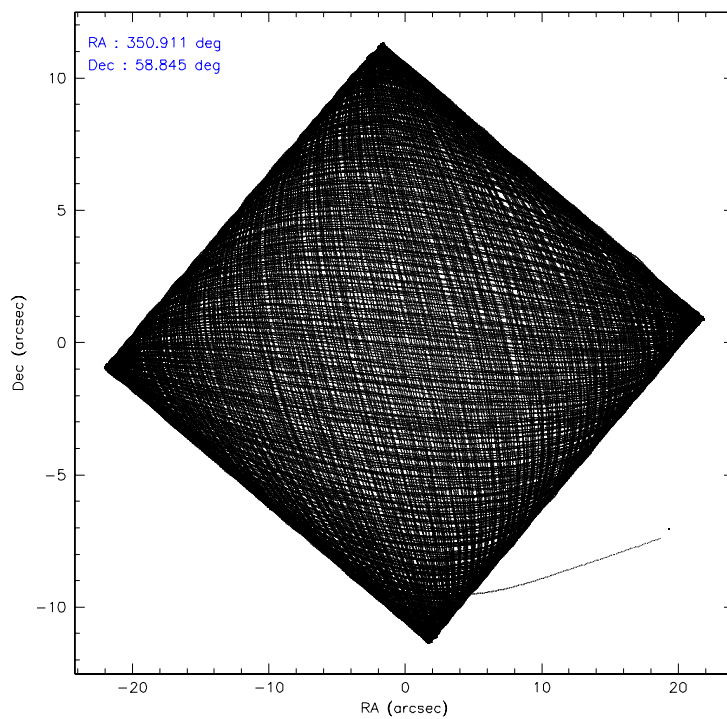
	ccd 7
grade 0 events	10935809
	20%
grade 1 events	195527
	0%
grade 2 events	14485763
	27%
grade 3 events	5316911
	10%
grade 4 events	5228638
	9%
grade 5 events	926632
	1%
grade 6 events	13640800
	25%
grade 7 events	1894446
	3%

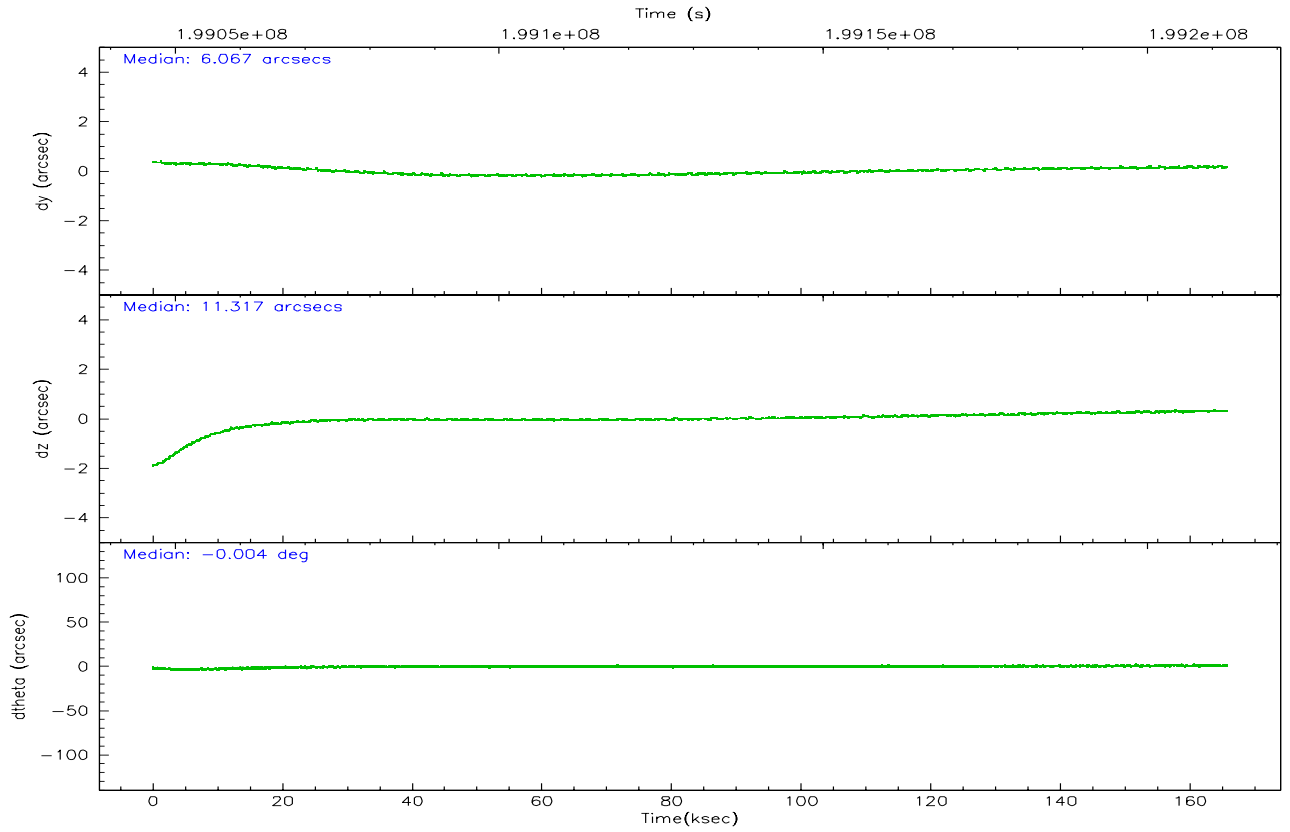
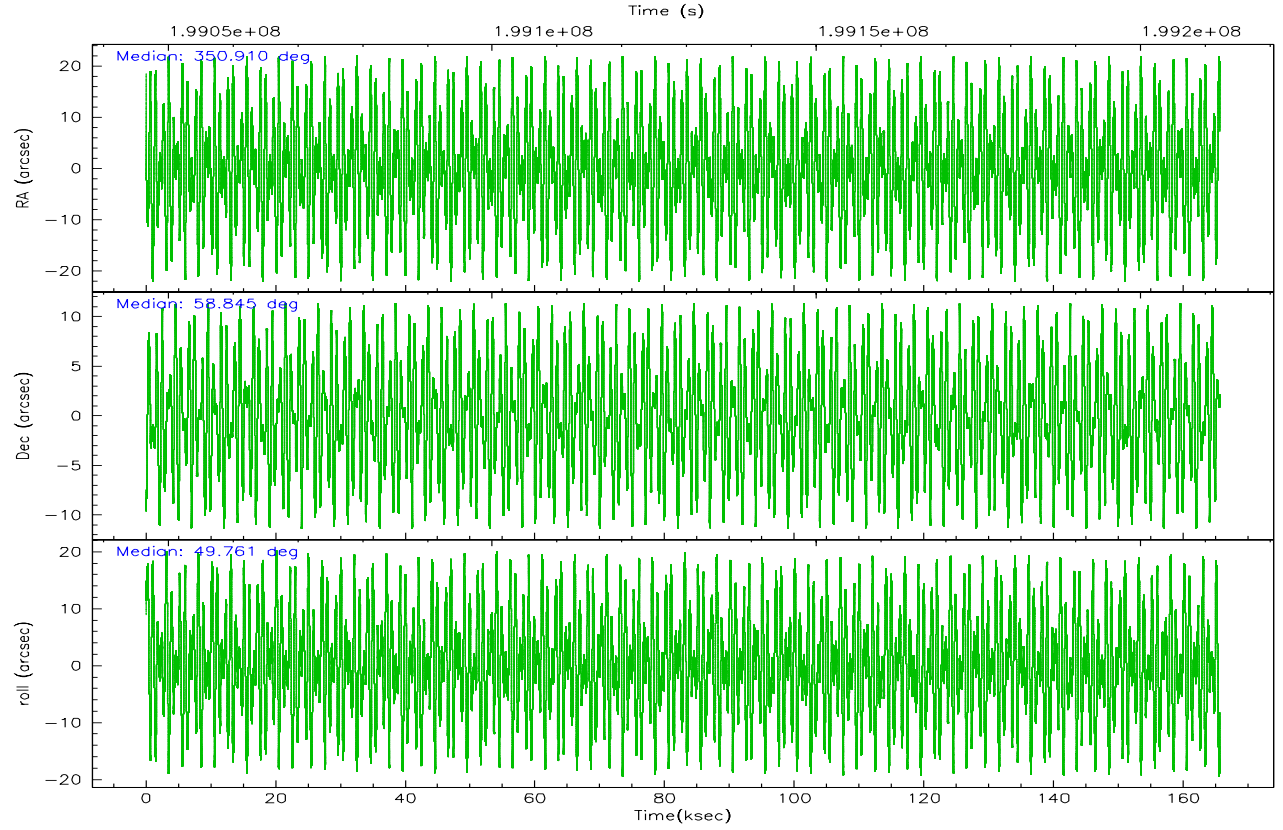


## 2.2 Compared Parameters

Parameter	Planned	Actual	Parameter	Planned	Actual
Instrument	ACIS	ACIS	Obspar format version number	6	6
Detector	ACIS-7	ACIS-7	Obspar file type	PREDICTED	ACTUAL
Grating	NONE	NONE	Obspar update status	NONE	UPDATED
Data mode	GRADED	GRADED	On-chip summing requested	N	N
Observation mode	POINTING	POINTING	Subarray requested	NONE	NONE
Pointing RA	350.901823	350.9104400322374	Alternating exposures requested	N	N
Pointing Dec	58.818026	58.84486886430813	Primary exposure time	0.000000	3
Pointing Roll	49.618278	49.76753933395176			
SIM focus pos (mm)	-0.684267	-0.6828225247311905			
SIM defocus (mm)	0	0.001444936568705701			
SIM translation stage pos (mm)	-190.132523	-190.1400660498719			
SIM translation stage offset (mm)	0	0.00754346686406393			
Observation start time	199046738.184000	199046464.71219			
Observation start date	2004-04-22T18:44:34	2004-04-22T18:41:04			
Observation end time	199212317.184000	199212632.08201			
Observation end date	2004-04-24T16:44:13	2004-04-24T16:50:32			
Read mode	TIMED	TIMED			

## 2.3 Aspect



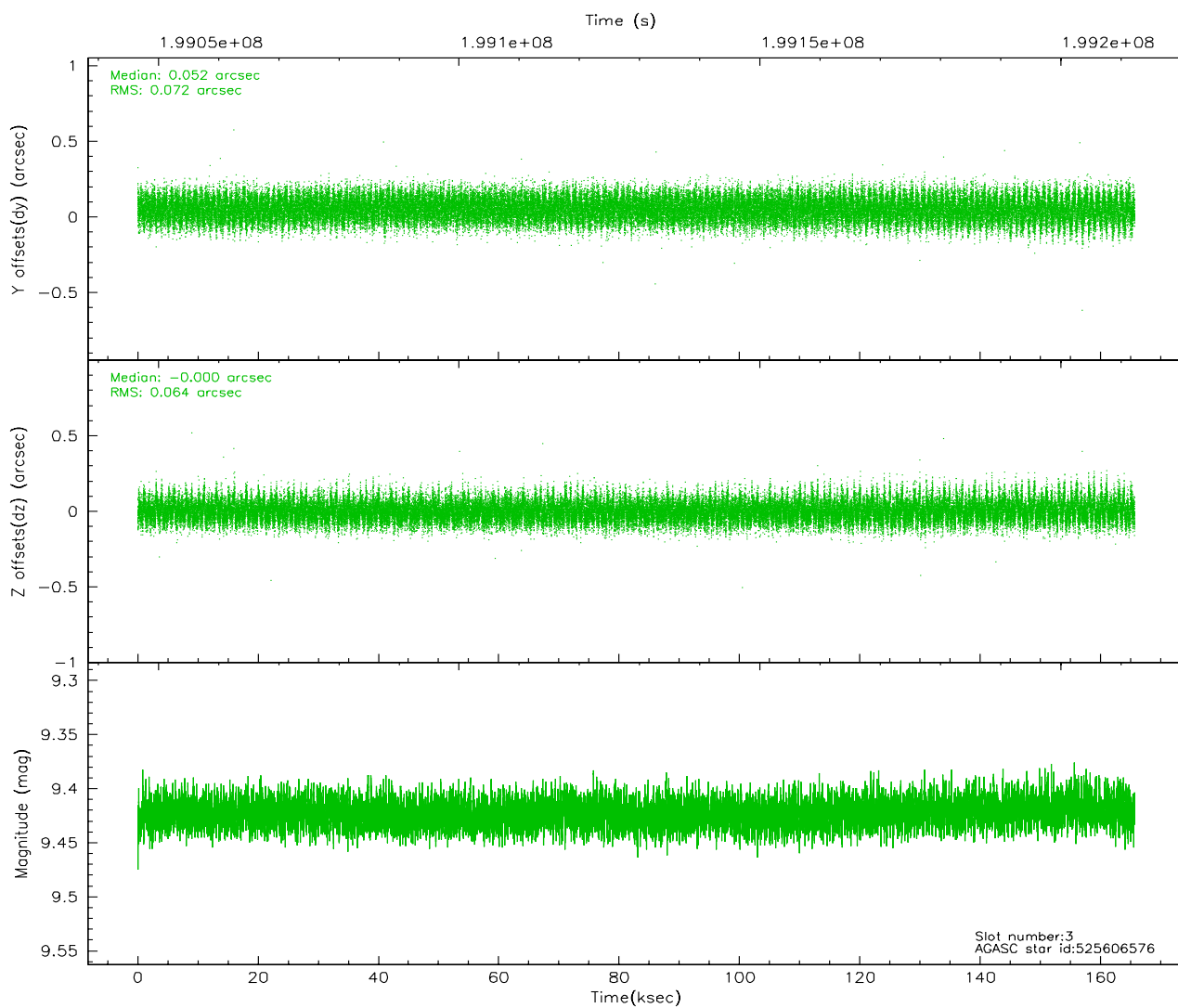
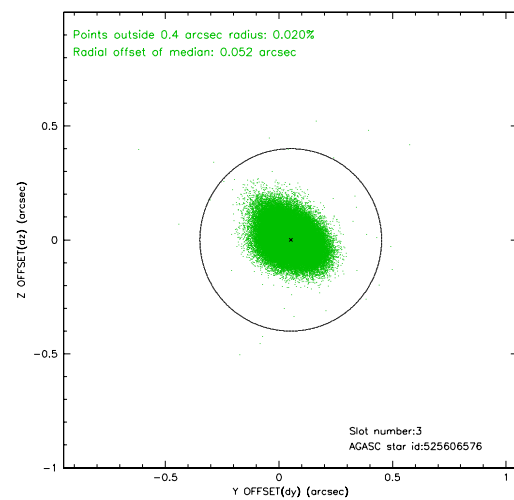
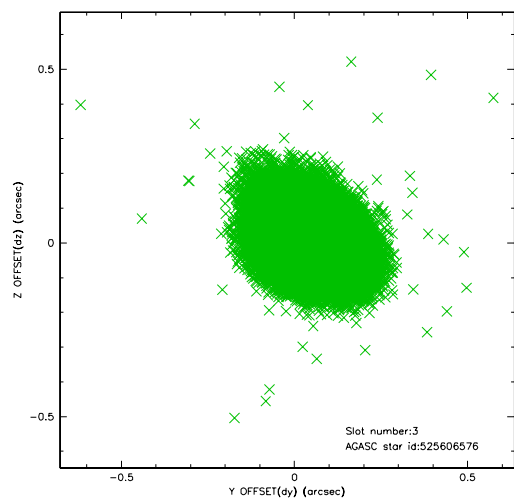


### Slot Statistics

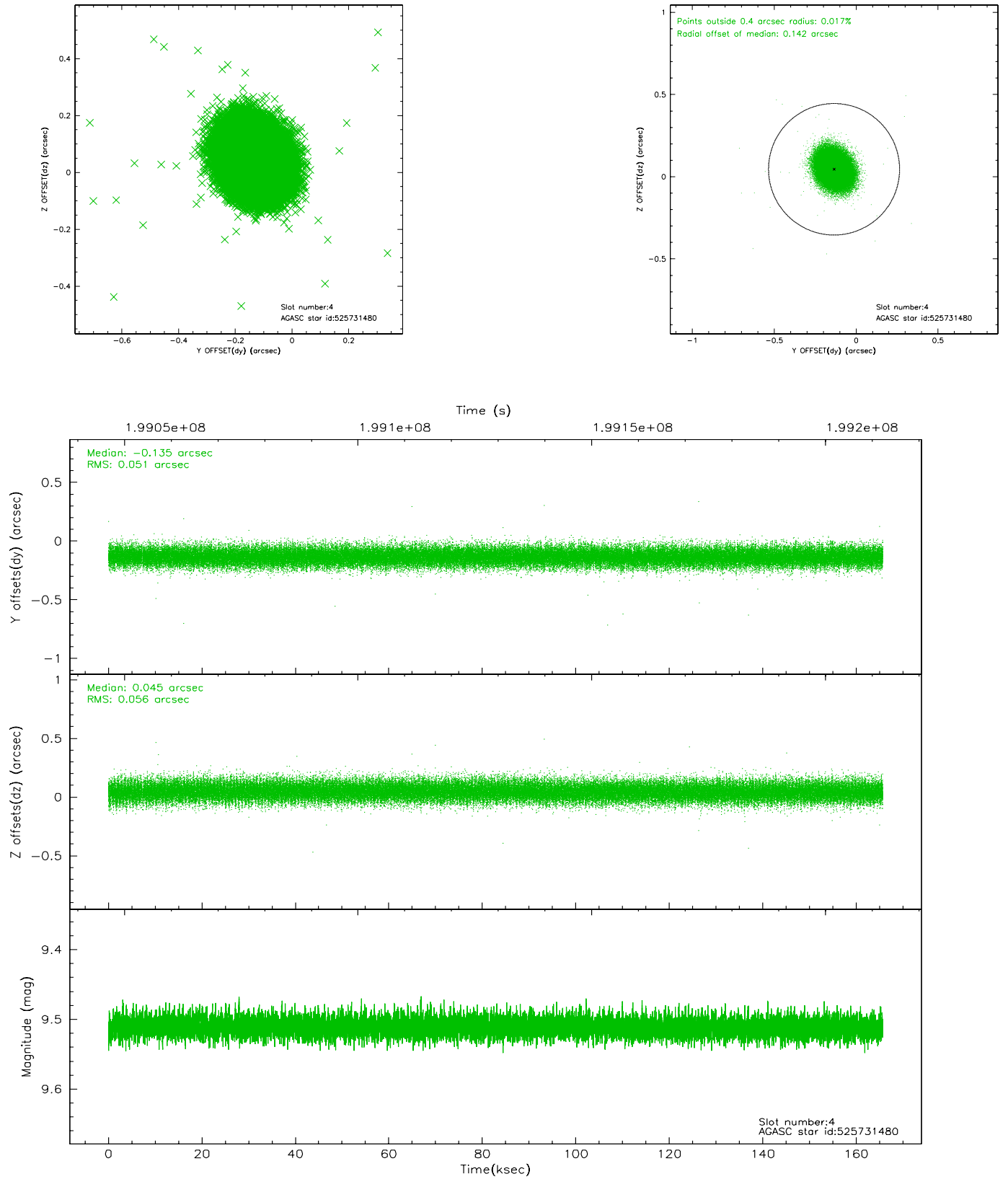
slot	status	id	mag	n_pts	med_dy	med_dz	dr1	dr2	ra	dec	mean_y	mean_z
0	FID	ACIS-S-1	7.18	40421	-0.012	-0.049	0.009	0.023	0.000000	0.000000	937.19	-1728.26
1	FID	ACIS-S-4	7.20	40419	0.013	0.044	0.008	0.023	0.000000	0.000000	2154.58	176.09
2	FID	ACIS-S-5	7.23	40420	-0.029	0.018	0.007	0.017	0.000000	0.000000	-1811.83	169.58
3	GUIDE	525606576	9.42	80788	0.052	-0.000	0.102	0.166	349.543555	58.678895	-2008.71	1628.41
4	GUIDE	525731480	9.51	80641	-0.135	0.045	0.080	0.131	351.647209	58.687294	551.13	-1361.76
5	GUIDE	525732232	9.11	80808	0.073	0.041	0.074	0.127	351.669550	58.757012	768.12	-1229.26
6	GUIDE	525732488	8.41	80830	-0.032	-0.083	0.062	0.098	350.087090	58.516915	-1810.76	470.51
7	GUIDE	525736400	9.07	80812	0.041	-0.007	0.069	0.111	350.974563	59.175145	1066.49	731.19

## 2.4 Star Slots

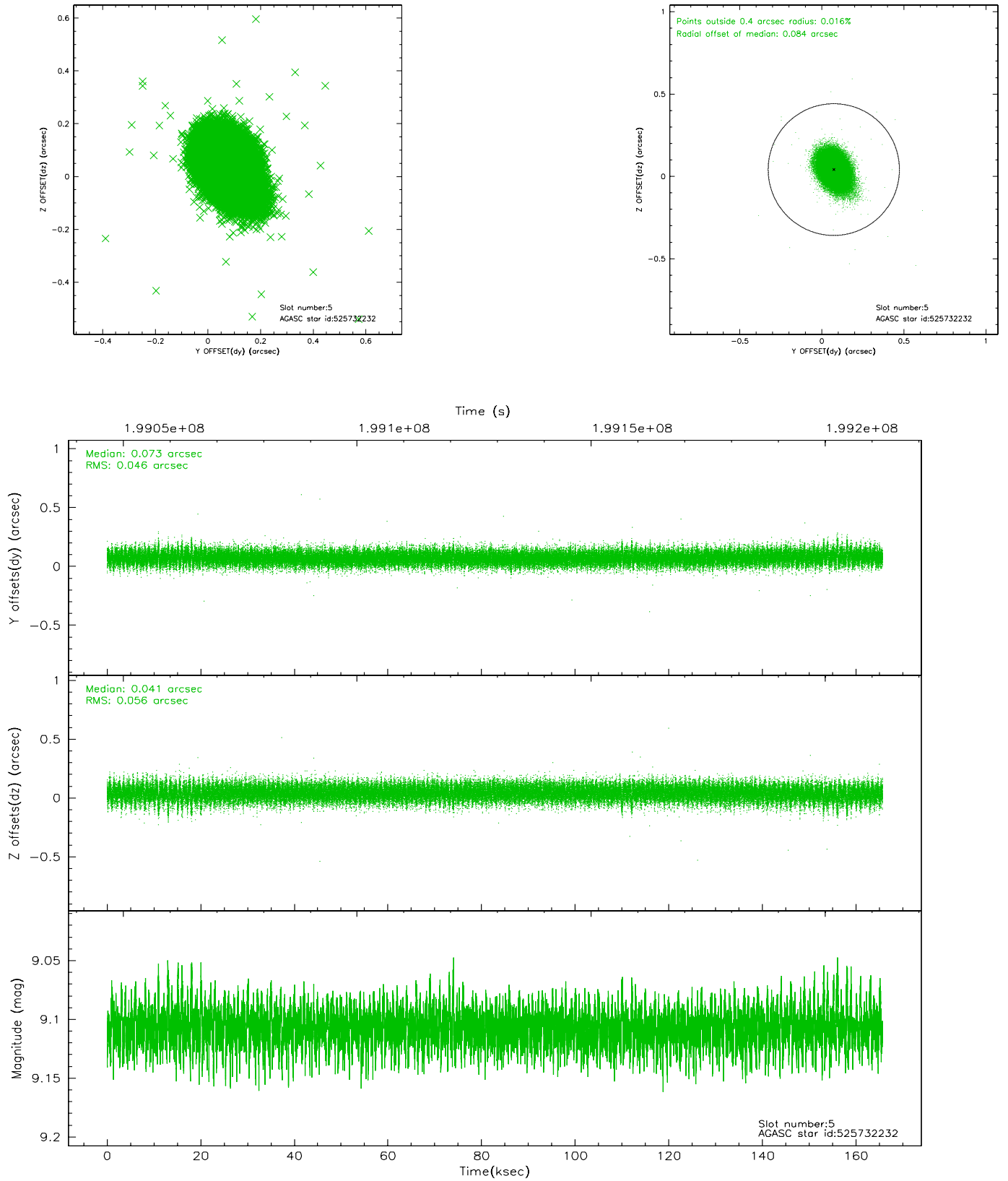
### 2.4.1 Slot 3



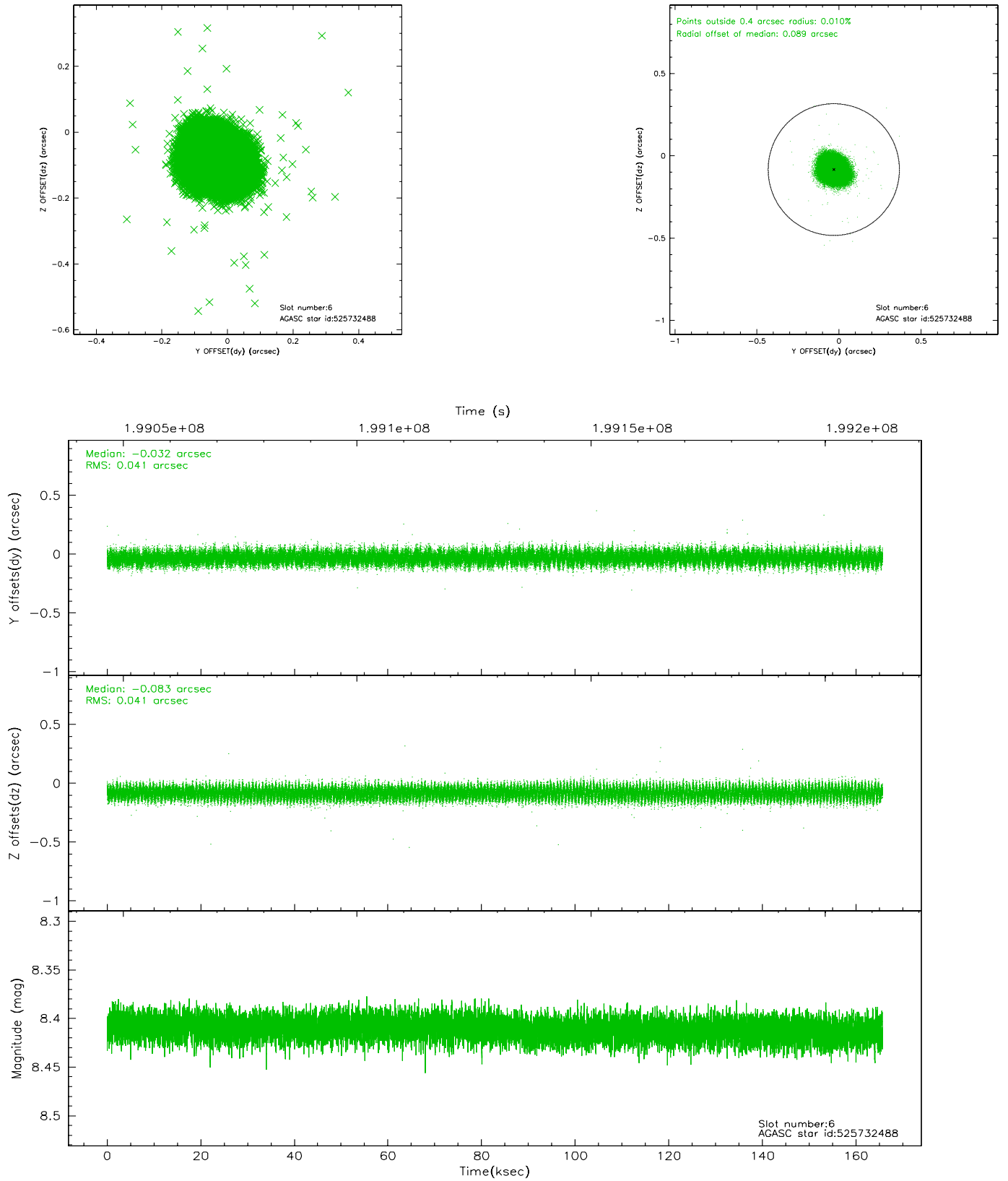
## 2.4.2 Slot 4



### 2.4.3 Slot 5

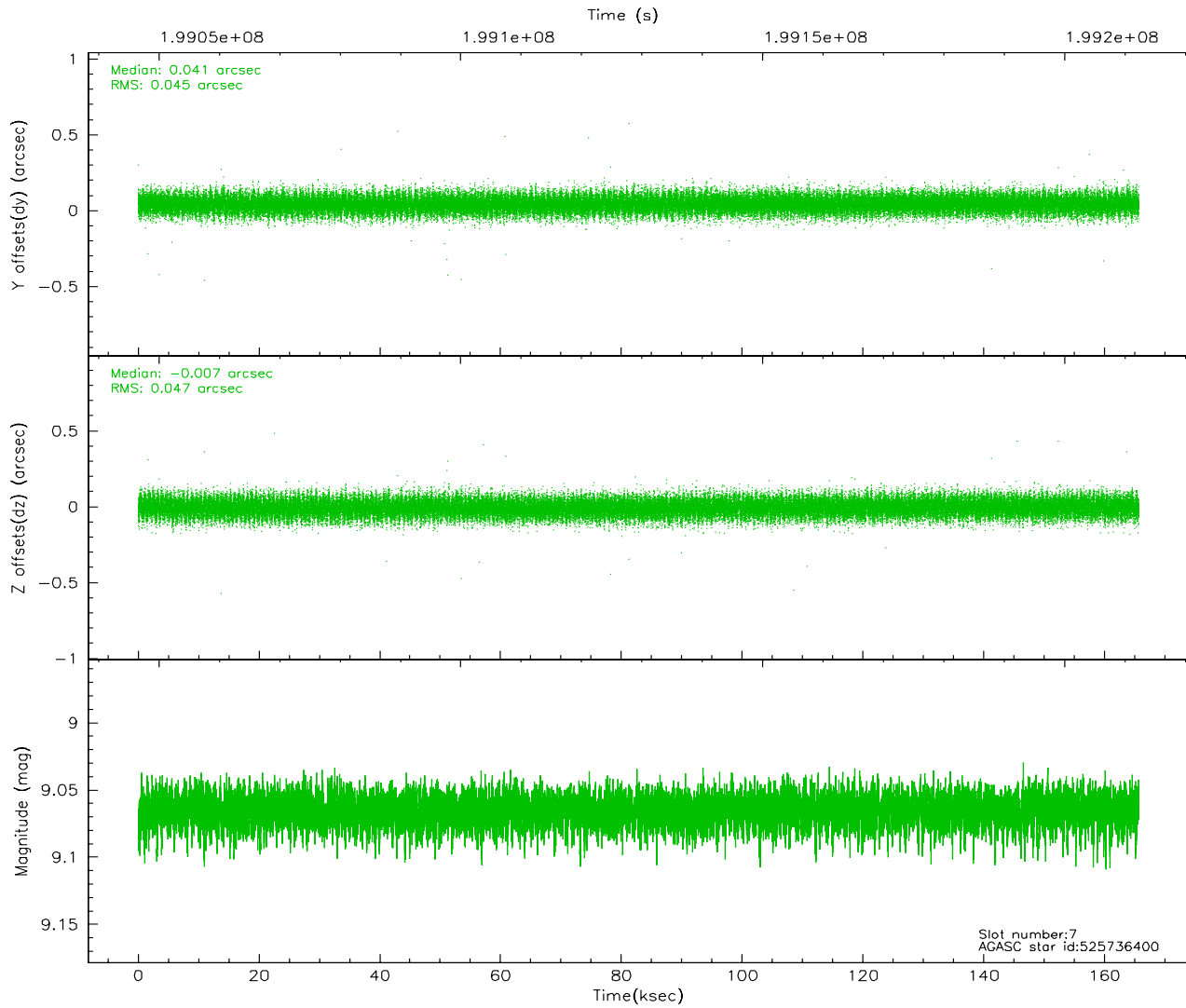
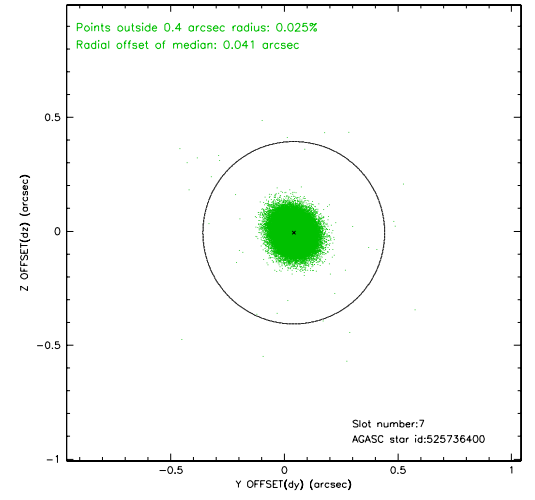
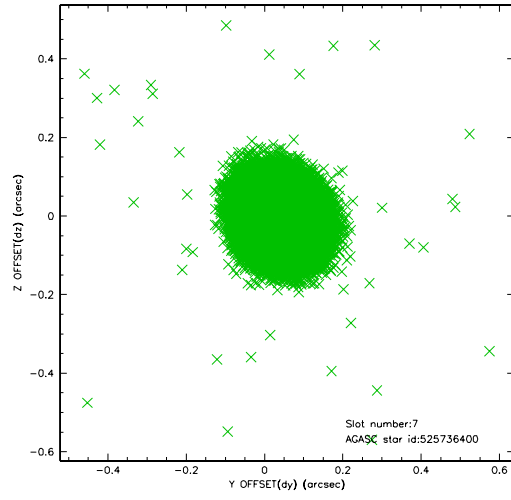


## 2.4.4 Slot 6



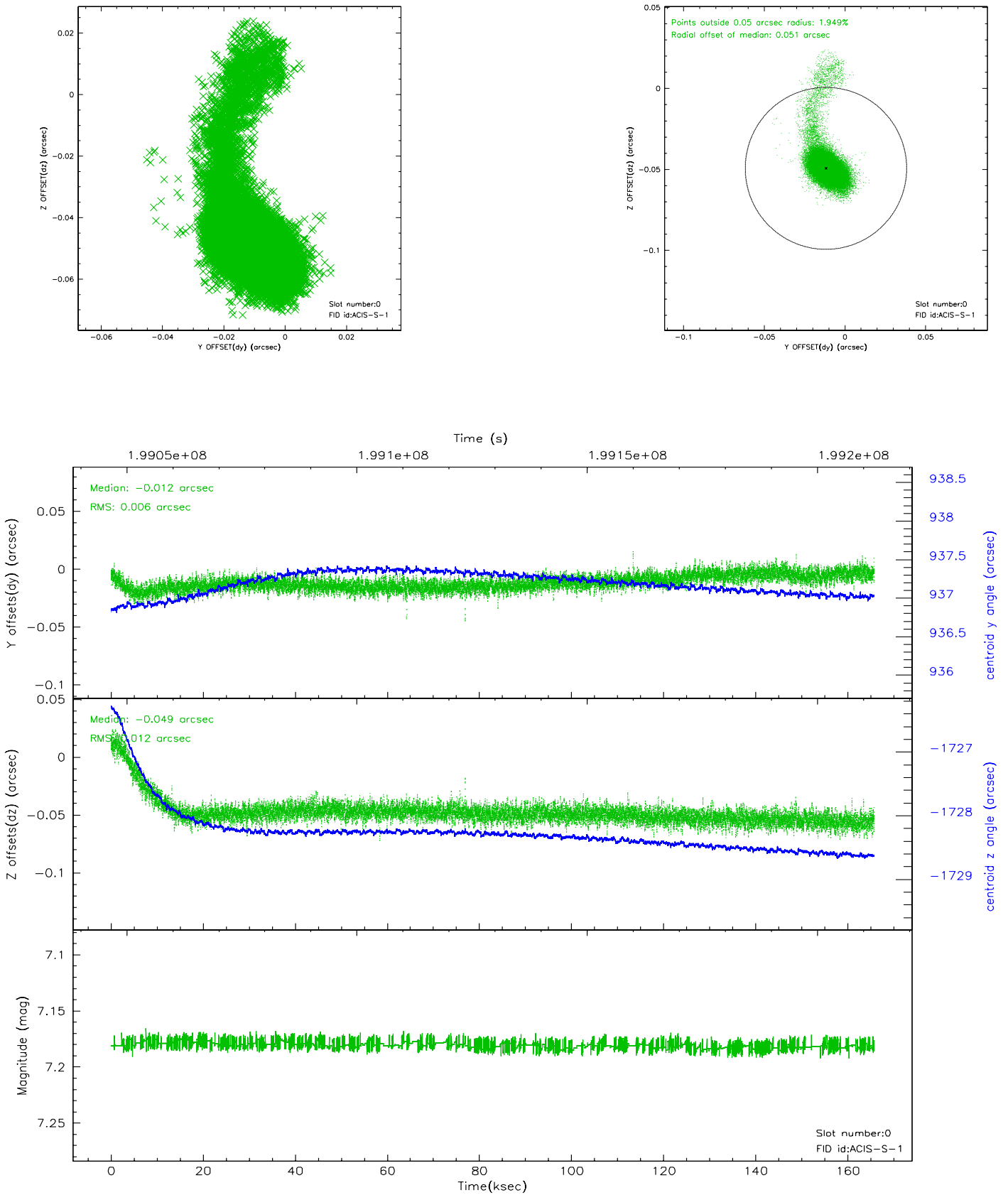


## 2.4.5 Slot 7

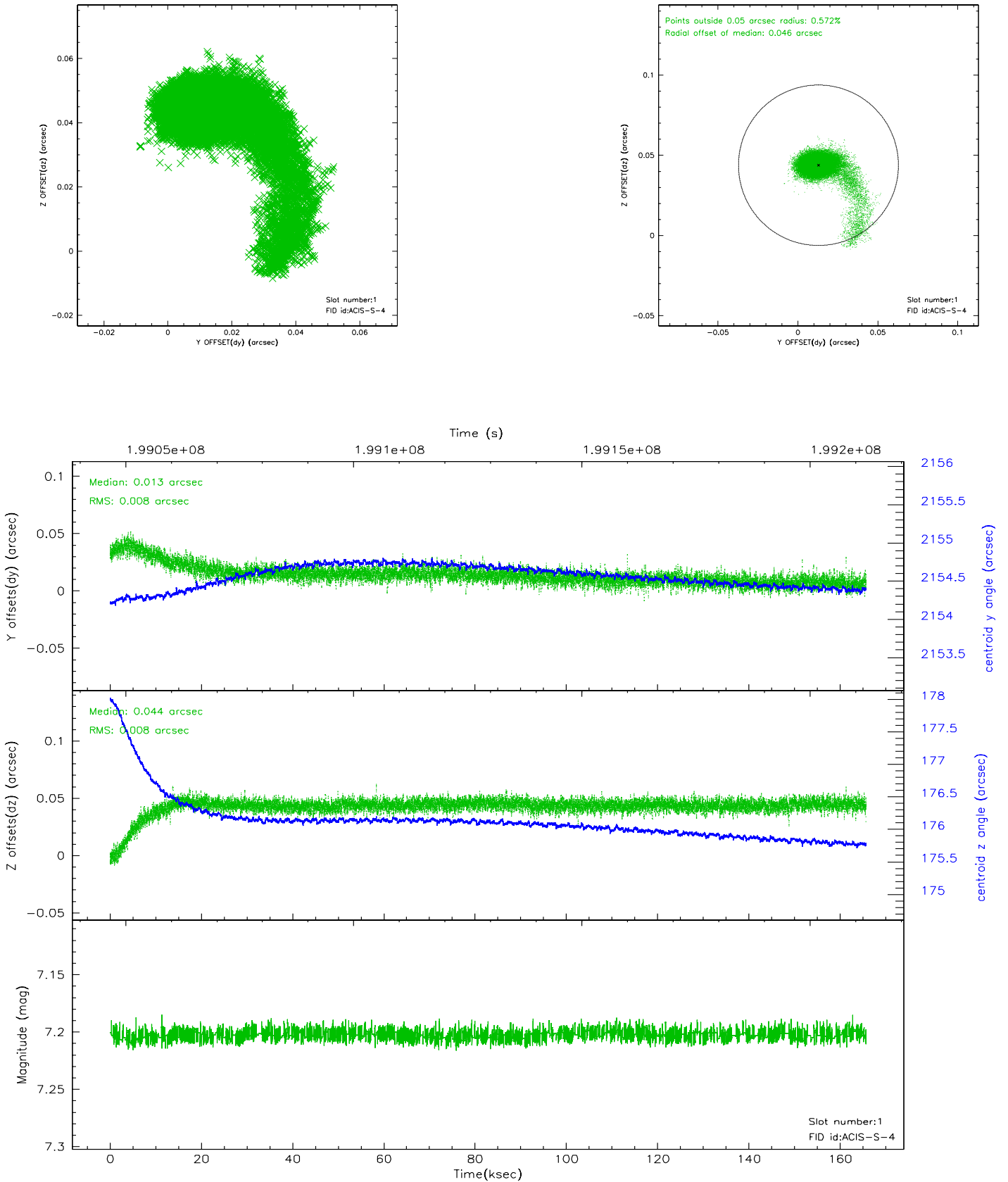


## 2.5 FID Slots

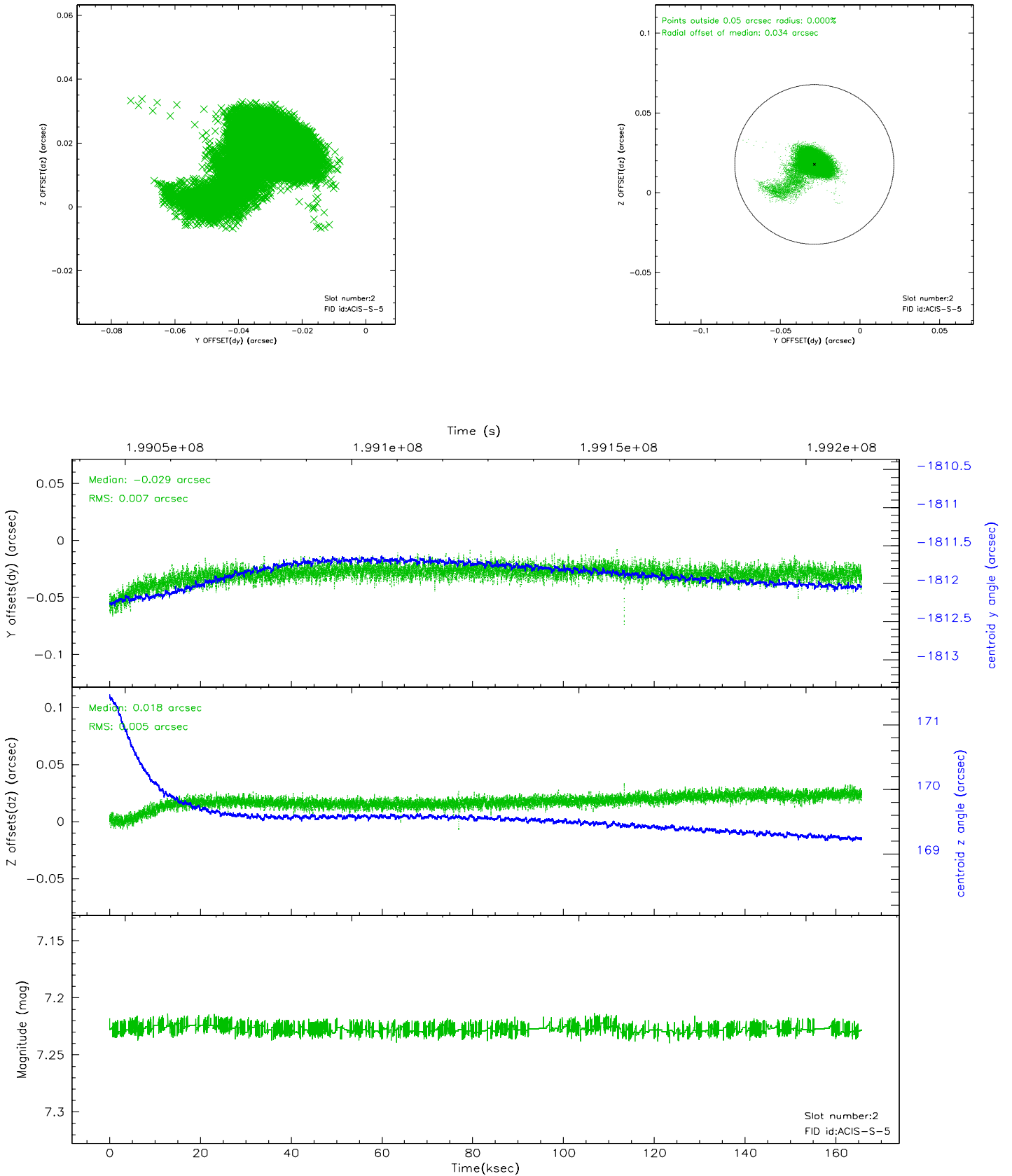
### 2.5.1 Slot 0



## 2.5.2 Slot 1



### 2.5.3 Slot 2



### 3 Point Sources

## A Summary

### A.1 Status

V&V Scientist	Joy Nichols
V&V Date (YYYY-MM-DD)	2006.07.31
V&V Edition	1
V&V Disposition and Status	OK
V&V Charge Time	165.66

### A.2 Comments