

V&V Reference Report

L2 ASCDS Version : 7.6.7.1

Observation 4630 - L2 Version 002
Chandra X-Ray Center

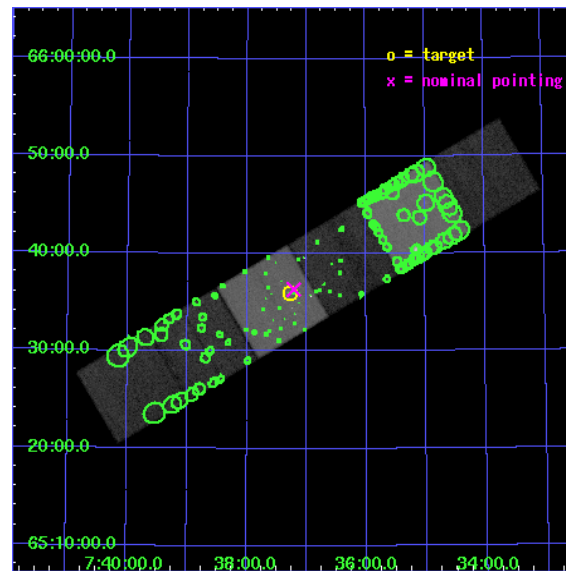
L2 Processing Date : Apr 7 2006

Contents

1	Front	2
2	OBI	3
2.1	OBI	3
2.1.1	Images	3
2.1.2	Bias	3
2.1.3	Parameters	4
2.1.4	Events	4
2.2	Compared Parameters	5
2.3	Aspect	6
2.4	Star Slots	9
2.4.1	Slot 3	9
2.4.2	Slot 4	10
2.4.3	Slot 5	11
2.4.4	Slot 6	12
2.4.5	Slot 7	13
2.5	FID Slots	14
2.5.1	Slot 0	14
2.5.2	Slot 1	15
2.5.3	Slot 2	16
3	Point Sources	17
A	Summary	18
A.1	Status	18
A.2	Comments	18

1 Front

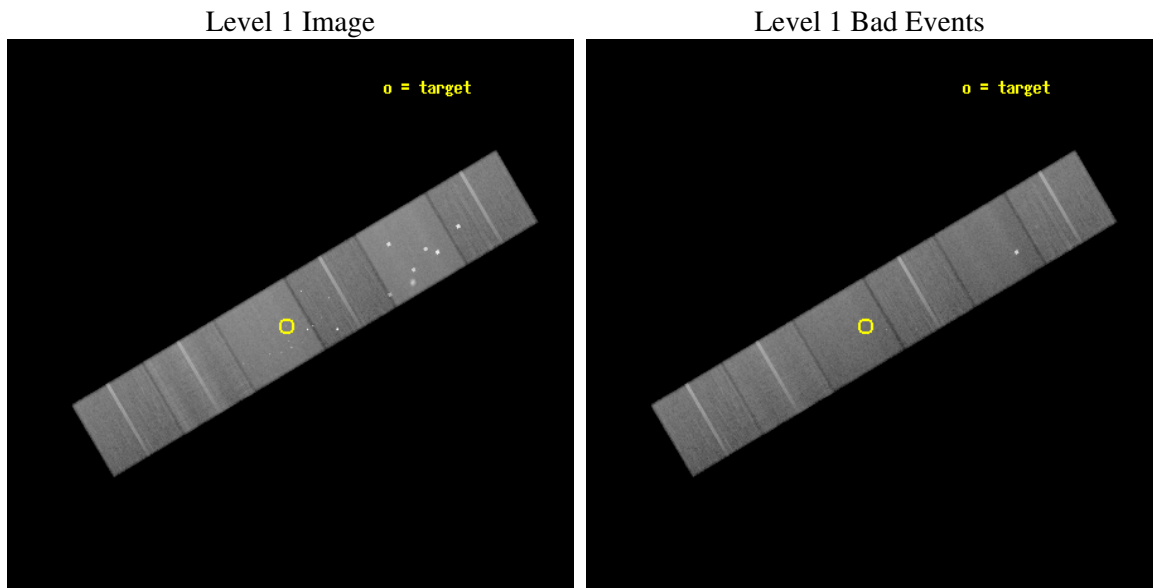
seq_num	500455
obs_id	4630
title	Prompt Chandra Observations of Nearby Supernovae
observer	Prof. Walter Lewin
object	SN 2004dj
dtcycle	0
cycle	P
ra_targ	114.32125
dec_targ	65.599528
ra_nom	114.30355970308
dec_nom	65.605832872199
roll_nom	149.30223533275
revision	2
ontime	50575.99981159
livetime	49935.576048764
ontime4	50575.99981159
ontime5	50575.99981159
ontime6	50572.758831292
ontime7	50575.99981159
ontime8	50572.758890957
ontime9	50575.99981159
l2events	635107



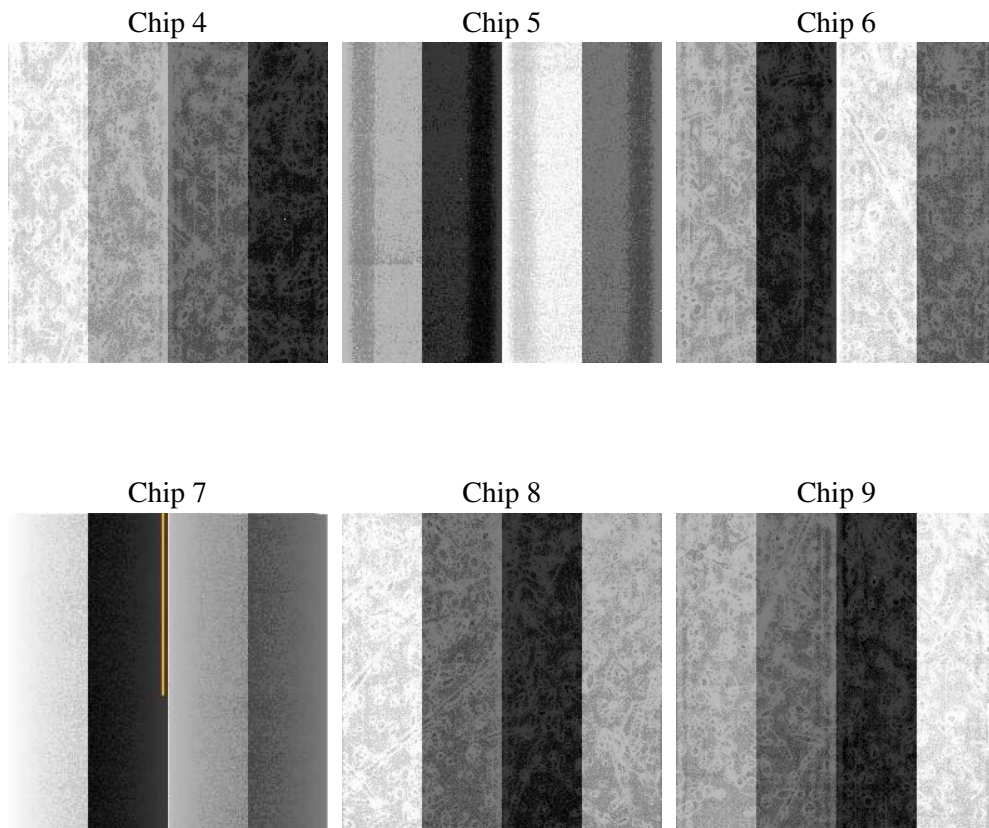
2 OBI

2.1 OBI

2.1.1 Images



2.1.2 Bias



2.1.3 Parameters

obi_num	0
ascdsver	7.6.7.1
caldsver	3.2.1
date	2006-04-07T11:46:56
revision	2

sched_exp_time	50620.000000
ontime	50579.224098563
ontime4	50579.224098563
ontime5	50579.224108487
ontime6	50575.983118266
ontime7	50579.224098563
ontime8	50575.98317793
ontime9	50579.224098563
l1events	2936434

2.1.4 Events

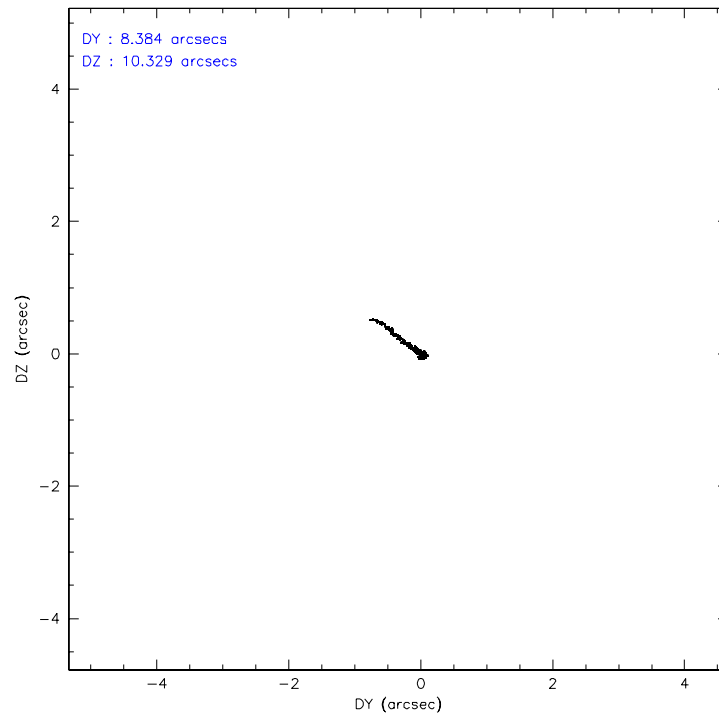
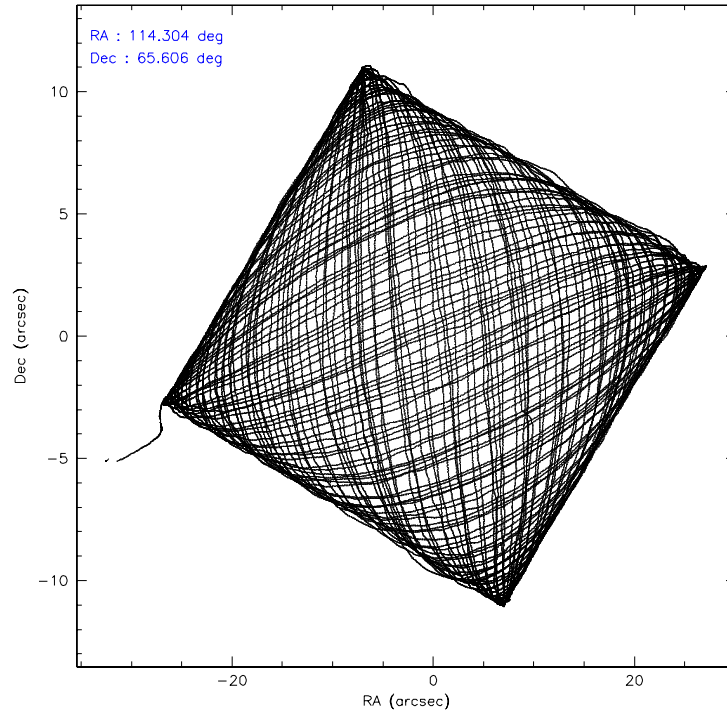
	ccd 4	ccd 5	ccd 6	ccd 7	ccd 8	ccd 9
level 1 events	459216	630210	408092	542768	499383	396765
rejected events	394899	334474	352400	332244	393752	349147
rejected %	85%	53%	86%	61%	78%	87%

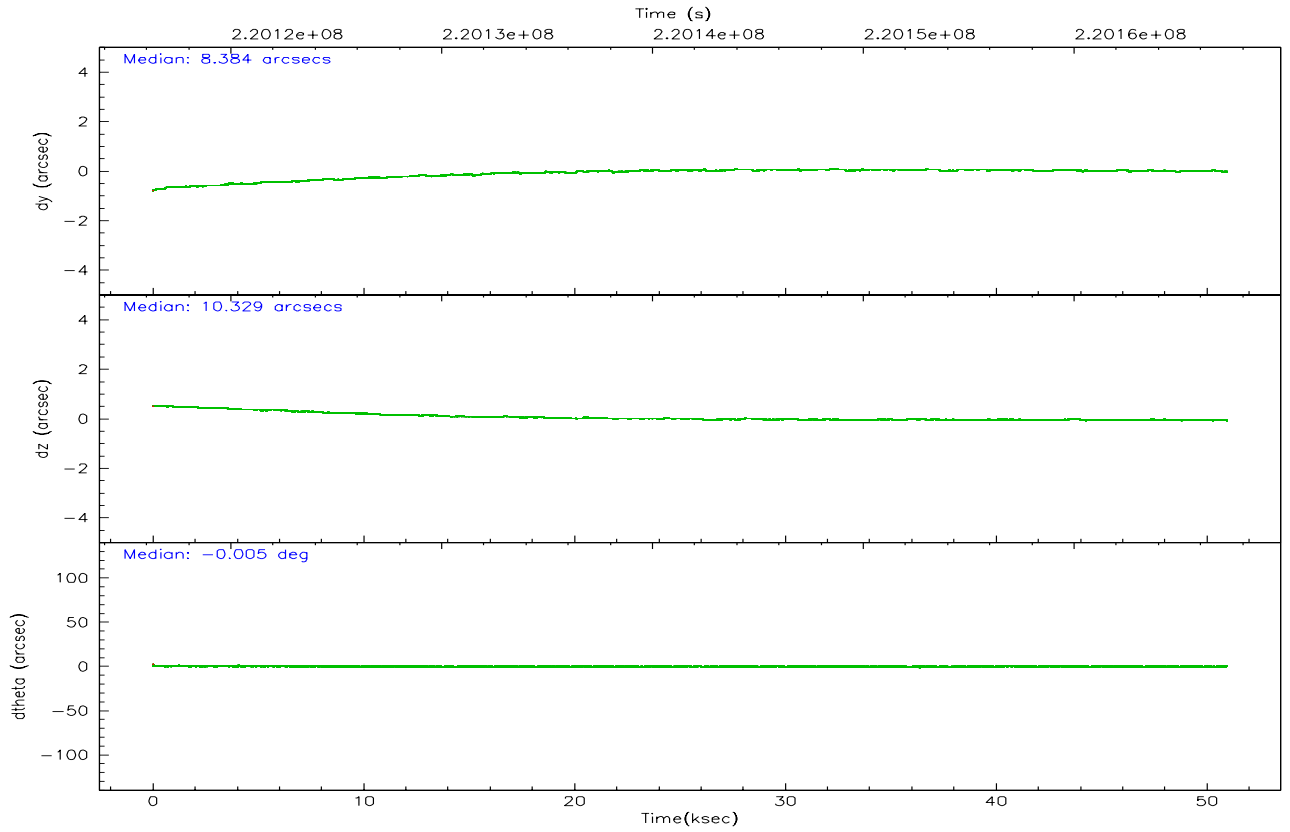
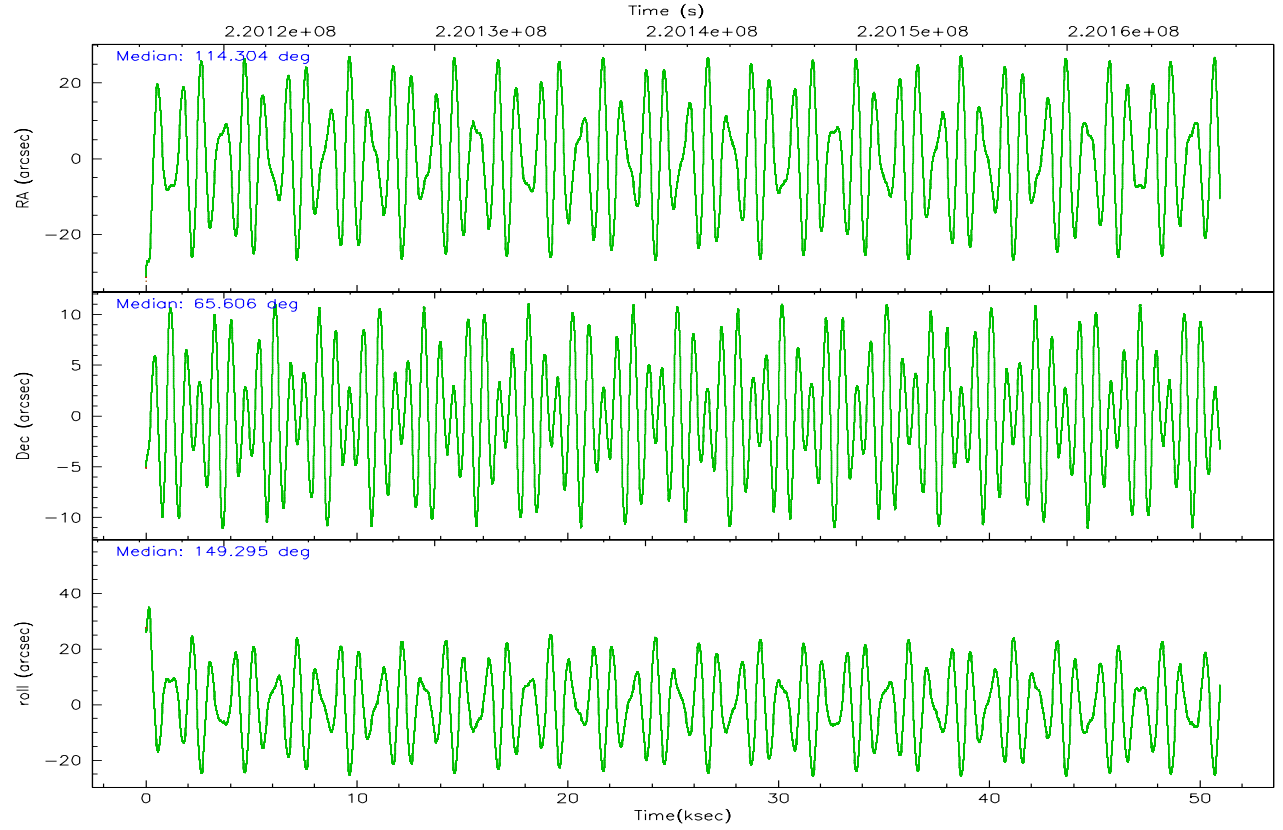
	ccd 4	ccd 5	ccd 6	ccd 7	ccd 8	ccd 9
grade 0 events	36425	45604	25782	12926	33301	19808
	7%	7%	6%	2%	6%	4%
grade 1 events	450	4637	248	319	352	219
	0%	0%	0%	0%	0%	0%
grade 2 events	10435	87301	10759	52485	23383	9101
	2%	13%	2%	9%	4%	2%
grade 3 events	4995	6438	4765	10735	11114	4710
	1%	1%	1%	1%	2%	1%
grade 4 events	4853	6115	4865	10402	10458	4690
	1%	0%	1%	1%	2%	1%
grade 5 events	17559	29366	18200	34754	23924	19185
	3%	4%	4%	6%	4%	4%
grade 6 events	7611	150307	9523	123997	27378	9312
	1%	23%	2%	22%	5%	2%
grade 7 events	376888	300442	333950	297150	369473	329740
	82%	47%	81%	54%	73%	83%

2.2 Compared Parameters

Parameter	Planned	Actual	Parameter	Planned	Actual
Instrument	ACIS	ACIS	Obspar format version number	6	6
Detector	ACIS-456789	ACIS-456789	Obspar file type	PREDICTED	ACTUAL
Grating	NONE	NONE	Obspar update status	NONE	UPDATED
Data mode	FAINT	FAINT	On-chip summing requested	N	N
Observation mode	POINTING	POINTING	Subarray requested	NONE	NONE
Pointing RA	114.369477	114.3035597030818	Alternating exposures requested	N	N
Pointing Dec	65.605874	65.60583287219863	Primary exposure time	0.000000	3.2
Pointing Roll	149.085577	149.3022353327514			
SIM focus pos (mm)	-0.684267	-0.6828225247311905			
SIM defocus (mm)	0	0.001444936568705701			
SIM translation stage pos (mm)	-190.132523	-190.1400660498719			
SIM translation stage offset (mm)	0	0.00754346686406393			
Observation start time	220116644.184000	220115609.71305			
Observation start date	2004-12-22T15:29:40	2004-12-22T15:13:29			
Observation end time	220167264.184000	220168051.79041			
Observation end date	2004-12-23T05:33:20	2004-12-23T05:47:31			
Read mode	TIMED	TIMED			

2.3 Aspect



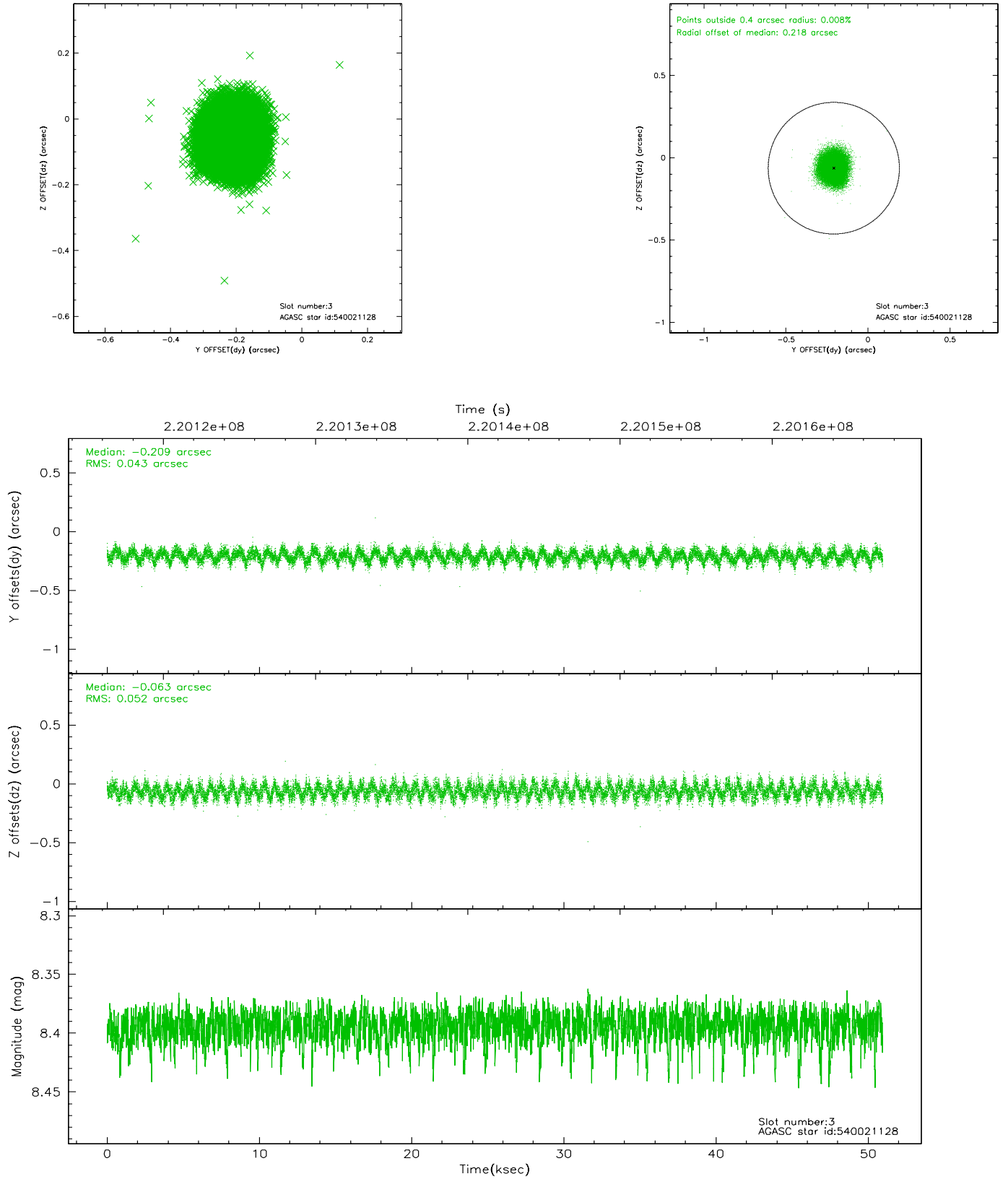


Slot Statistics

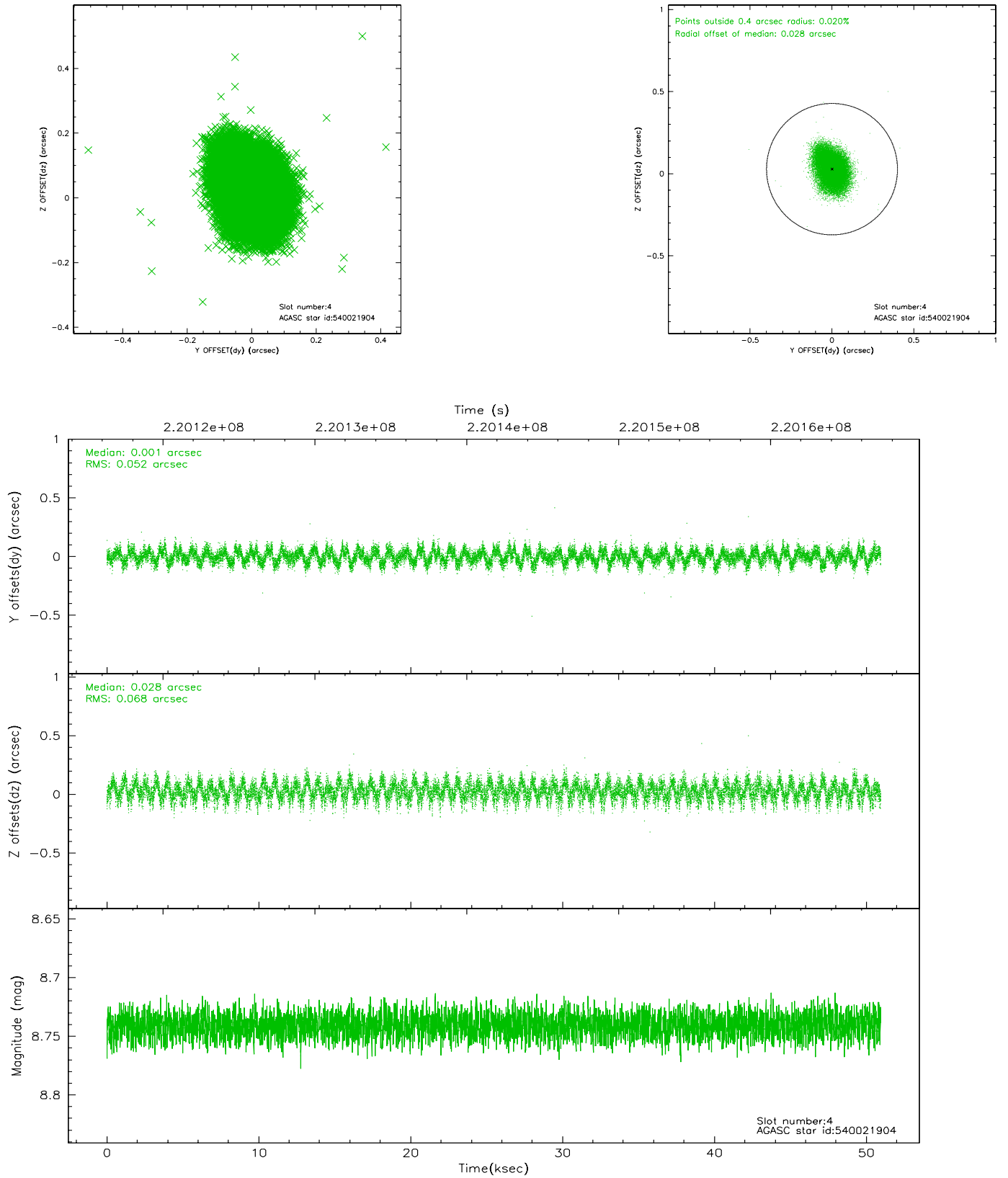
slot	status	id	mag	n_pts	med_dy	med_dz	dr1	dr2	ra	dec	mean_y	mean_z
0	FID	ACIS-S-2	7.11	12429	-0.030	0.002	0.009	0.016	0.000000	0.000000	-761.05	-1731.68
1	FID	ACIS-S-4	7.21	12429	0.084	0.014	0.012	0.035	0.000000	0.000000	2152.30	176.91
2	FID	ACIS-S-5	7.23	12428	-0.085	-0.008	0.012	0.029	0.000000	0.000000	-1814.02	170.44
3	GUIDE	540021128	8.39	24841	-0.209	-0.063	0.073	0.114	114.291258	65.330448	-408.67	911.05
4	GUIDE	540021904	8.74	24850	0.001	0.028	0.092	0.147	114.203372	65.242134	-457.71	1251.98
5	GUIDE	540541056	8.92	24837	-0.018	0.106	0.083	0.133	114.633382	66.183962	740.88	-1982.66
6	GUIDE	540548768	8.47	24745	0.050	-0.164	0.188	0.253	113.788166	65.673634	867.29	230.65
7	GUIDE	540153792	9.35	24835	0.174	0.090	0.082	0.135	115.938716	65.425474	-2333.52	-674.80

2.4 Star Slots

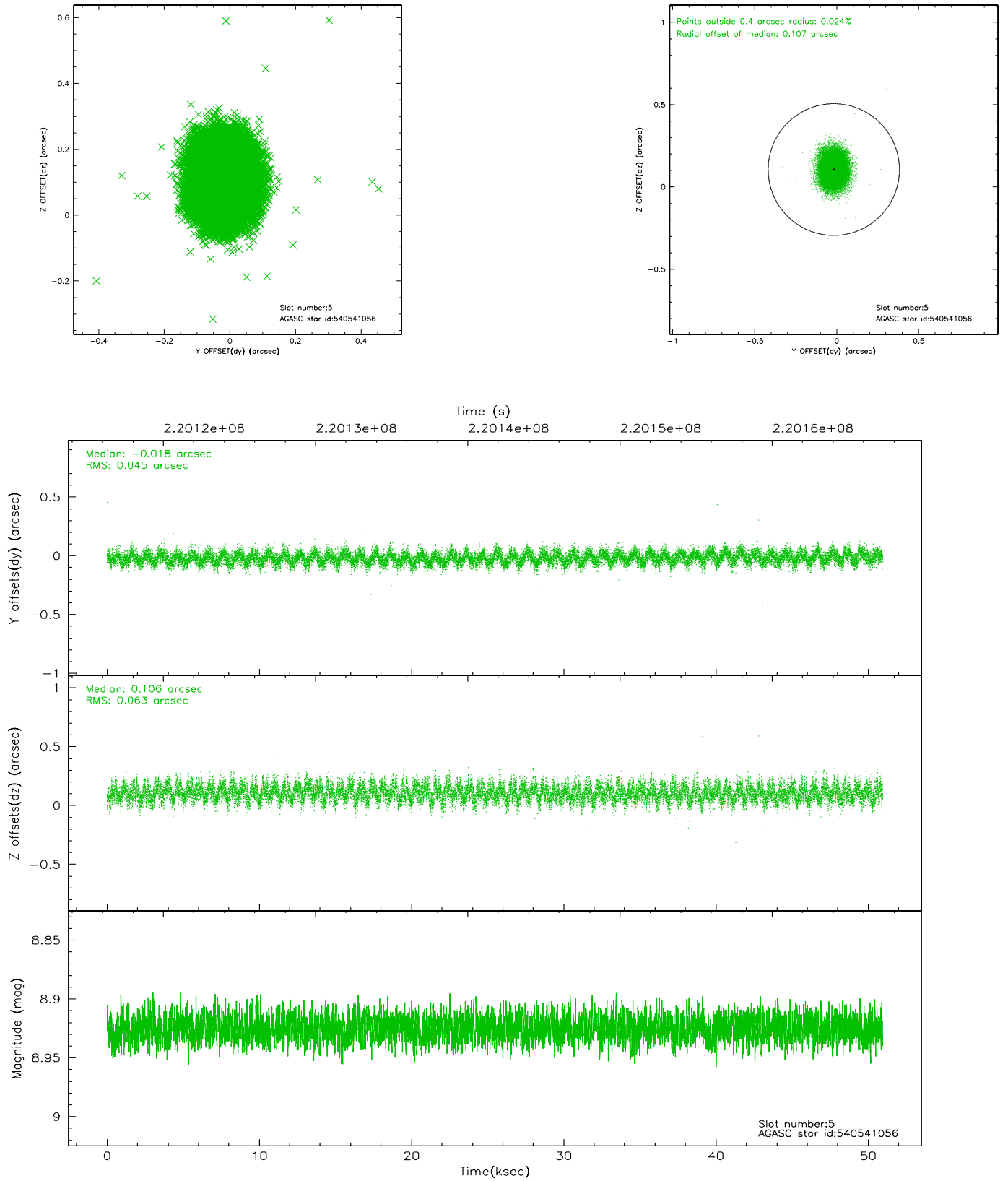
2.4.1 Slot 3



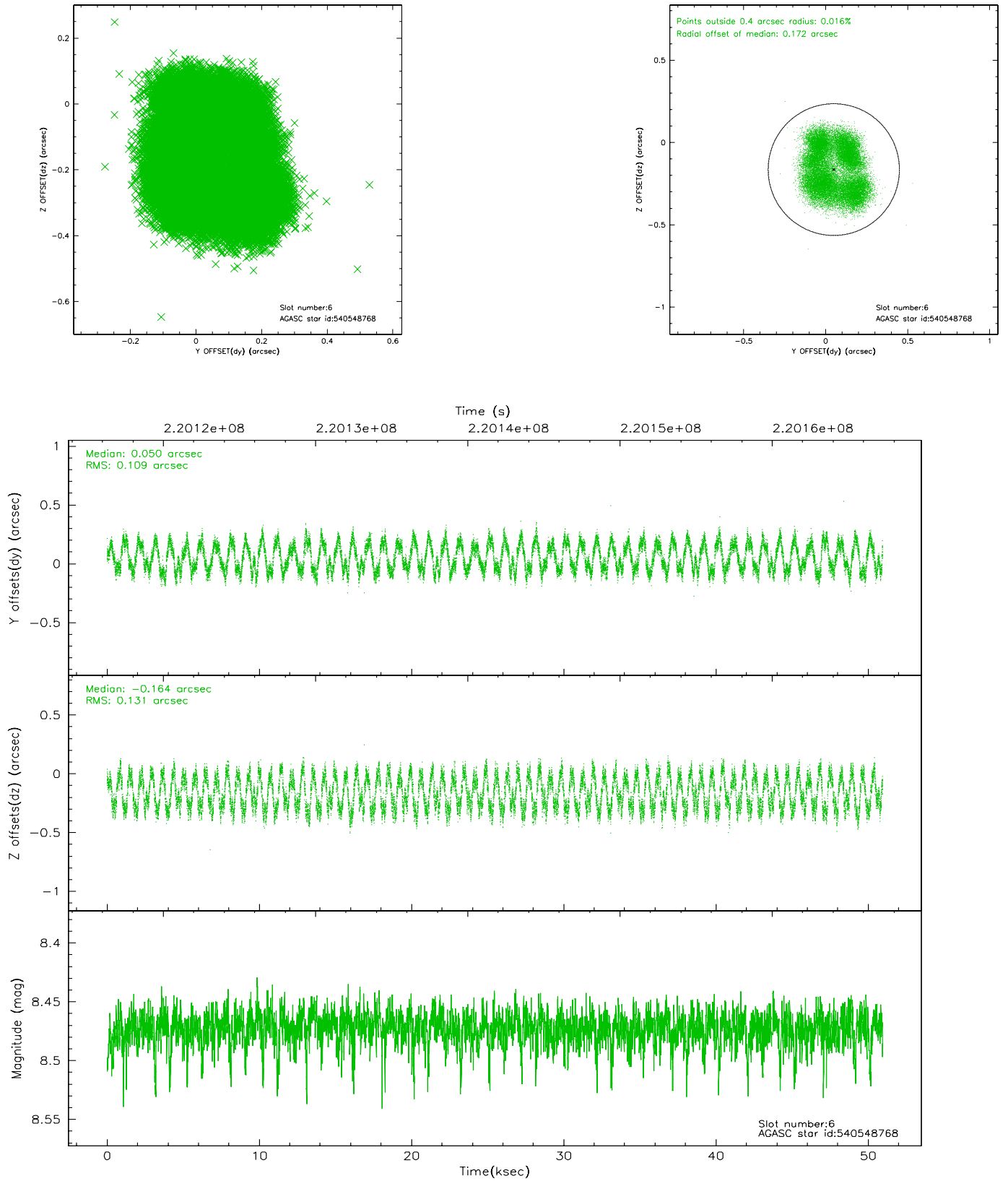
2.4.2 Slot 4



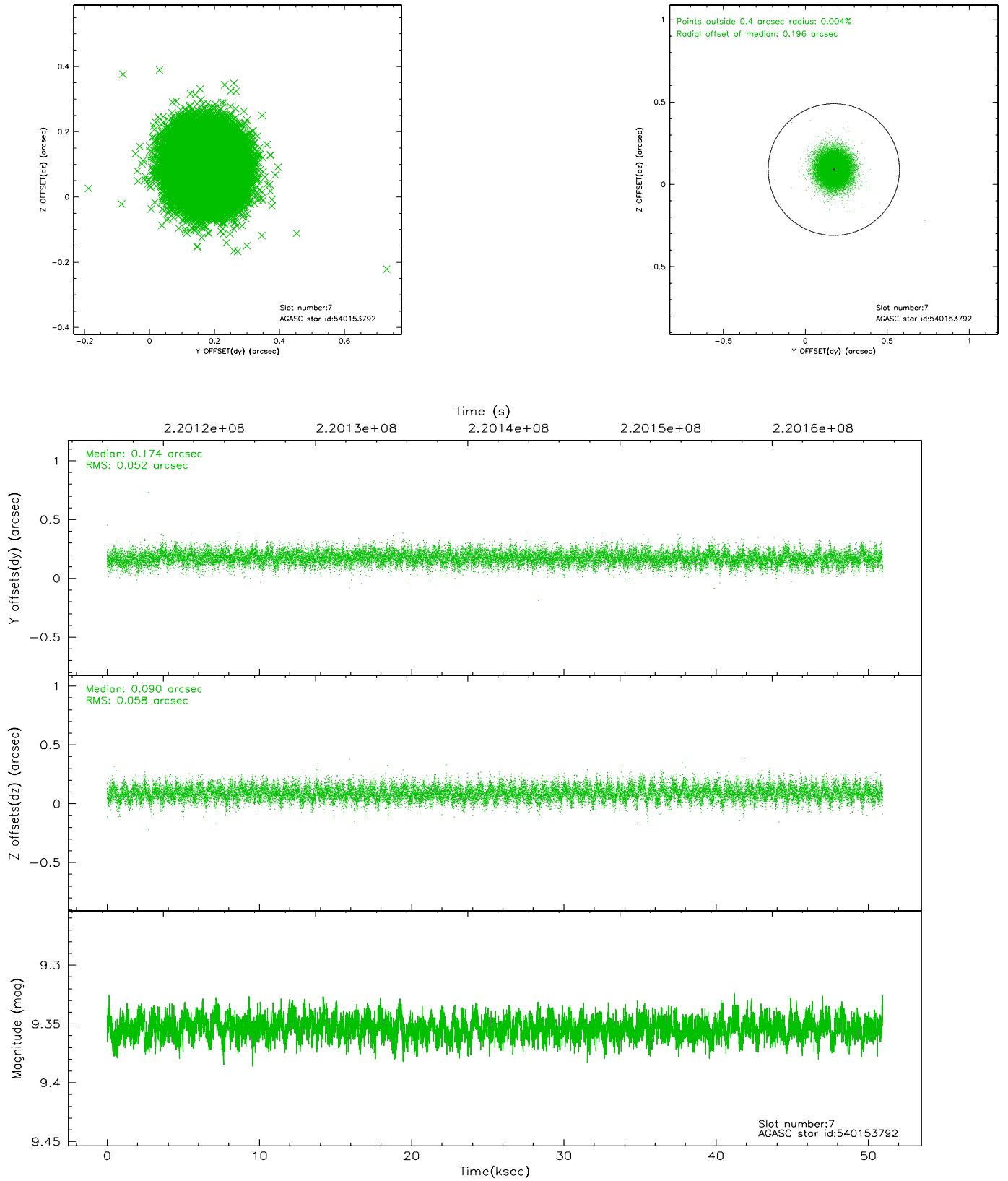
2.4.3 Slot 5



2.4.4 Slot 6

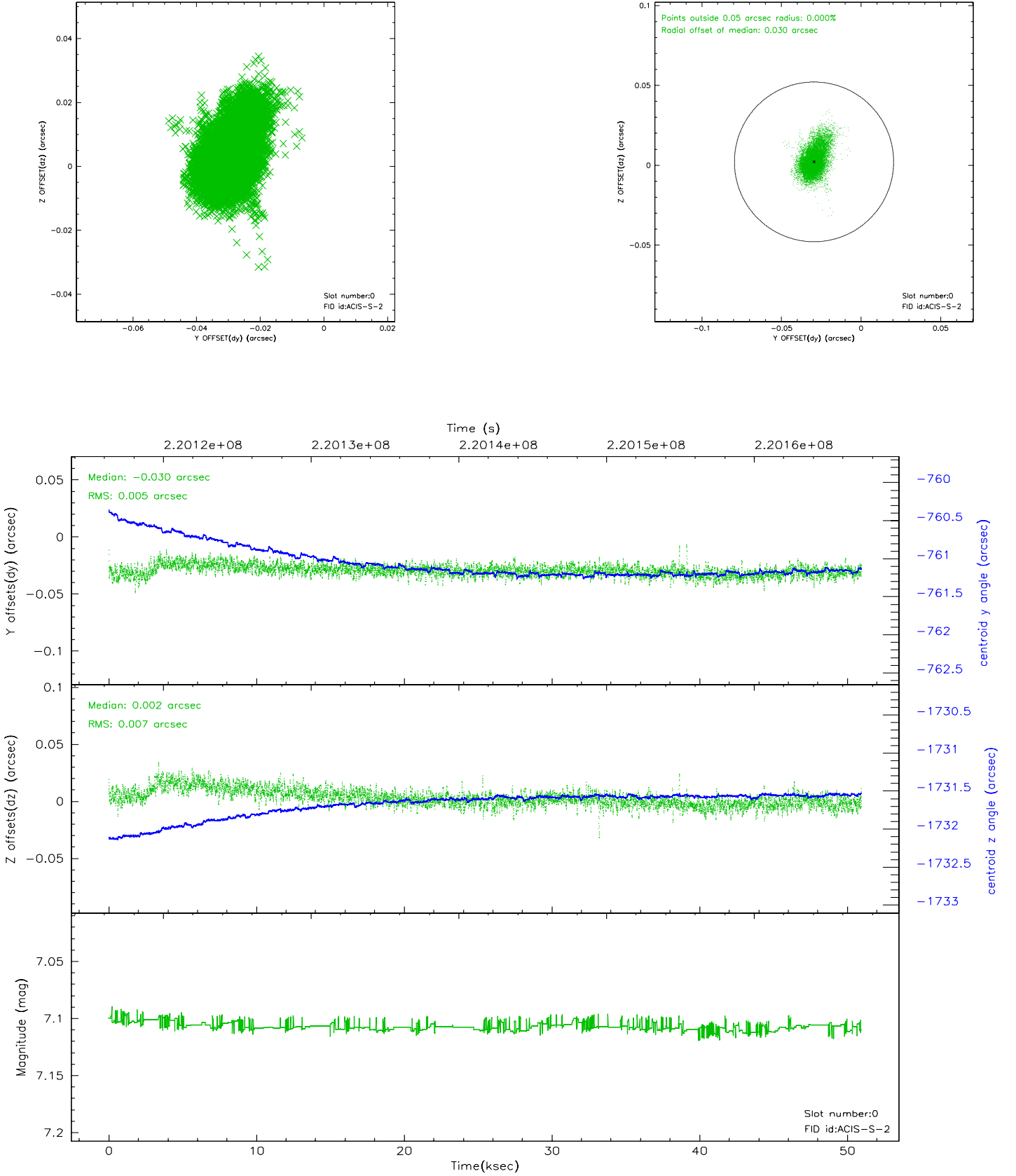


2.4.5 Slot 7

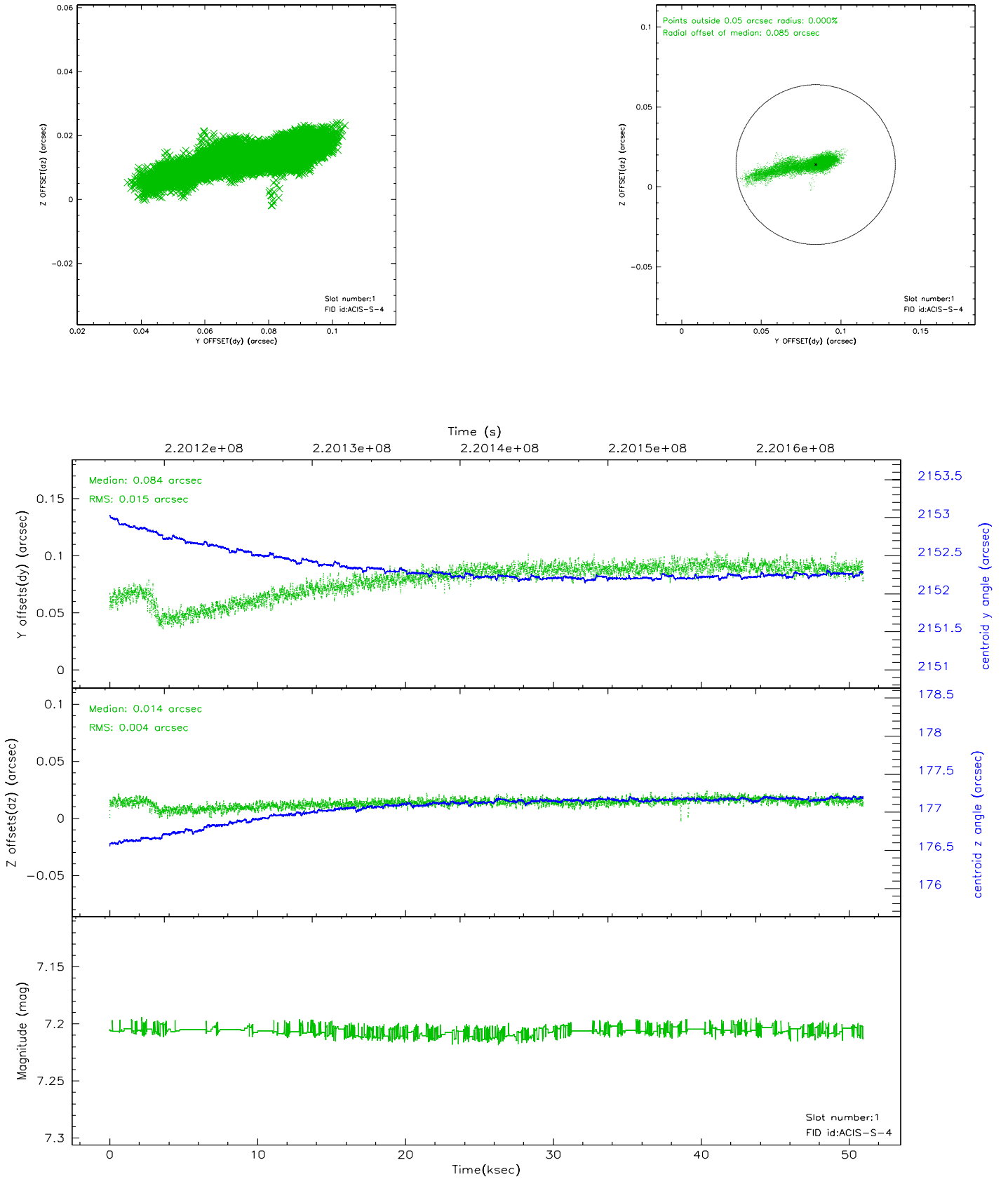


2.5 FID Slots

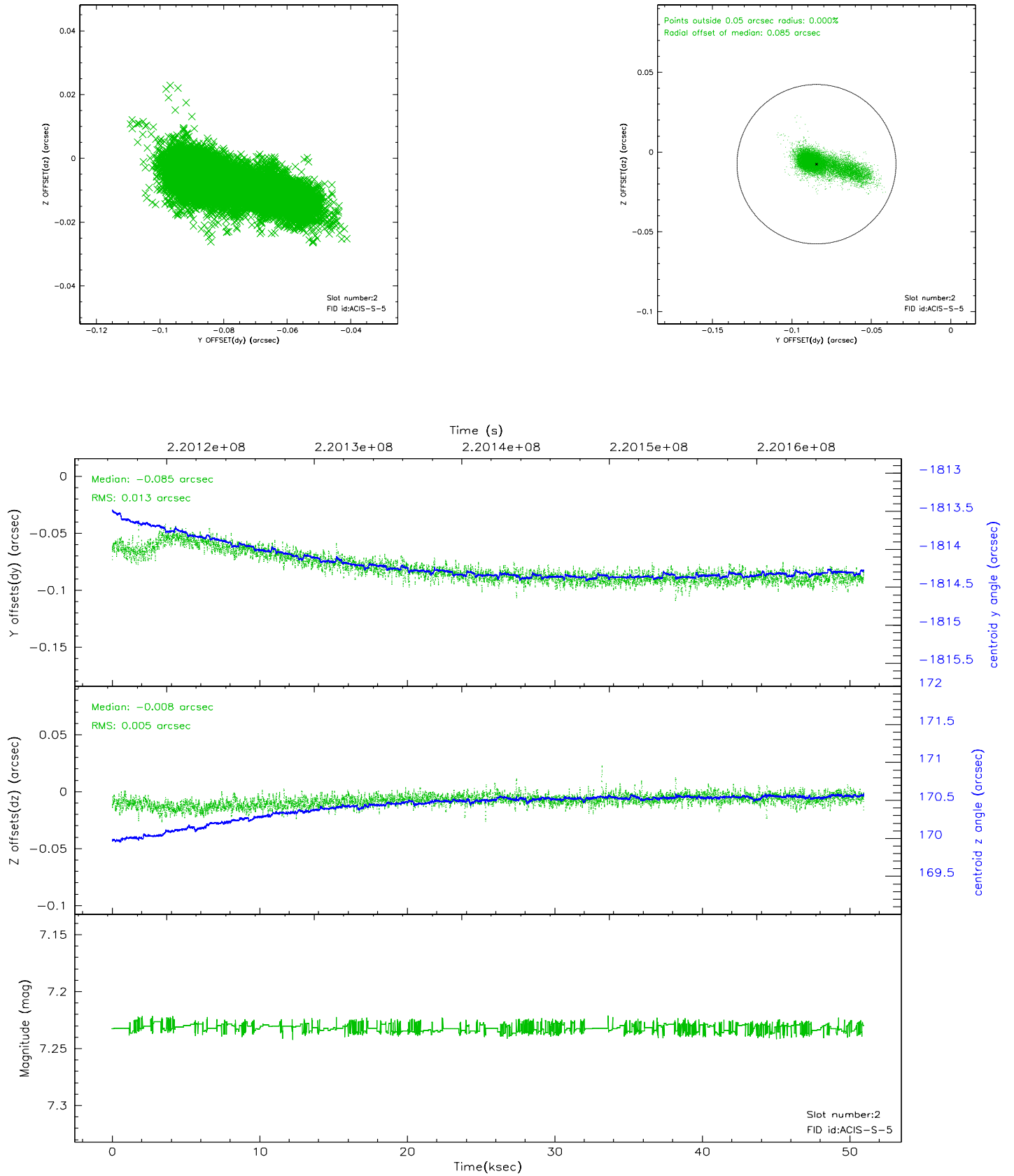
2.5.1 Slot 0



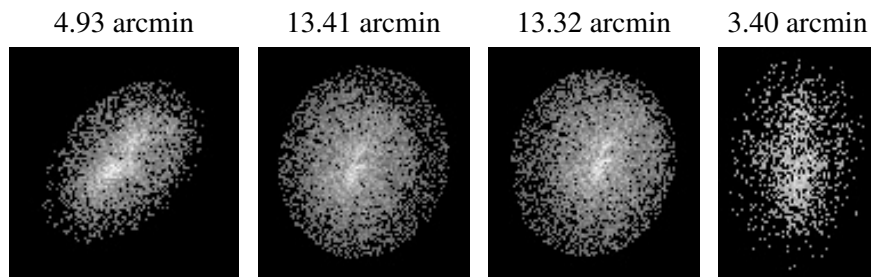
2.5.2 Slot 1



2.5.3 Slot 2



3 Point Sources



A Summary

A.1 Status

V&V Scientist	Beth Sundheim
V&V Date (YYYY-MM-DD)	2006.04.07
V&V Edition	1
V&V Disposition and Status	OK
V&V Charge Time	50.57599

A.2 Comments