

V&V Reference Report

L2 ASCDS Version : 7.6.7.2

Observation 4621 - L2 Version 001
Chandra X-Ray Center

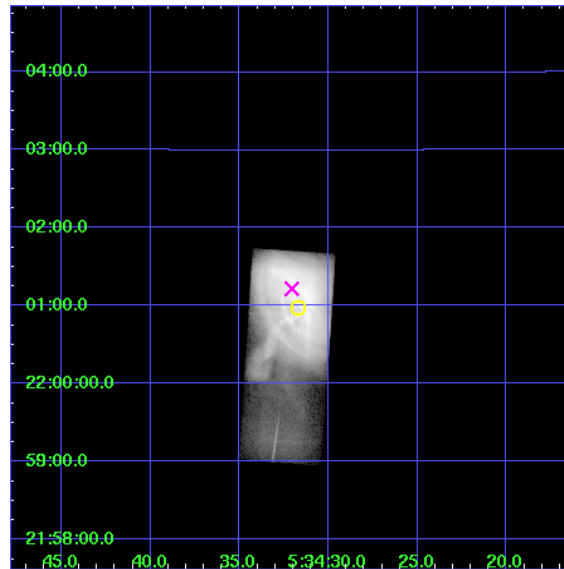
L2 Processing Date : Apr 26 2006

Contents

1	Front	2
2	OBI	3
2.1	OBI	3
2.1.1	Images	3
2.1.2	Parameters	4
2.1.3	Events	4
2.2	Compared Parameters	5
2.3	Aspect	6
2.4	Star Slots	9
2.4.1	Slot 3	9
2.4.2	Slot 4	10
2.4.3	Slot 5	11
2.4.4	Slot 6	12
2.4.5	Slot 7	13
2.5	FID Slots	14
2.5.1	Slot 0	14
2.5.2	Slot 1	15
2.5.3	Slot 2	16
3	Gratings	17
3.1	HEG Arm	17
3.2	MEG Arm	19
A	Summary	21
A.1	Status	21
A.2	Comments	21

1 Front

seq_num	500446
obs_id	4621
title	Spectroscopic Study of the Dynamic Shock in the Pulsar Wind of the Crab Nebula
observer	Dr Koji Mori
object	The Crab Nebula
dtcycle	0
cycle	P
ra_targ	83.632083
dec_targ	22.016472
ra_nom	83.633647787649
dec_nom	22.020557703452
roll_nom	93.837895366197
revision	2
ontime	10150.800403357
liveltime	8929.2755131567
ontime7	10150.800403357
l2events	2203692

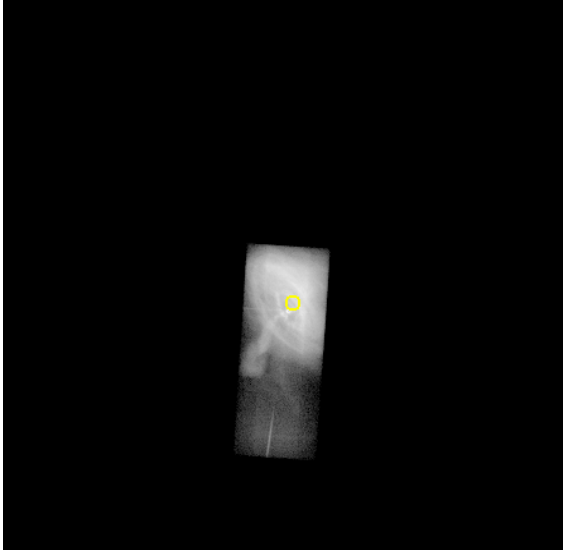


2 OBI

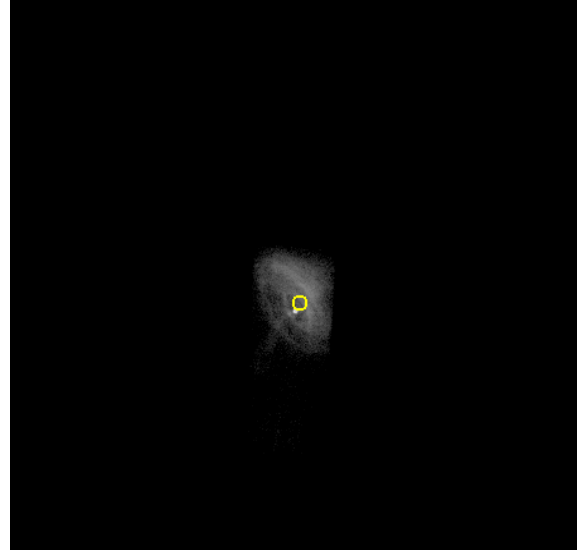
2.1 OBI

2.1.1 Images

Level 1 Image



Level 1 Bad Events



2.1.2 Parameters

obi_num	2
ascdsver	7.6.7.2
caldbver	3.2.1
date	2006-04-26T11:11:57
revision	2

sched_exp_time	10000.000000
ontime	10875.970153183
ontime7	10875.970153183
l1events	2358029

2.1.3 Events

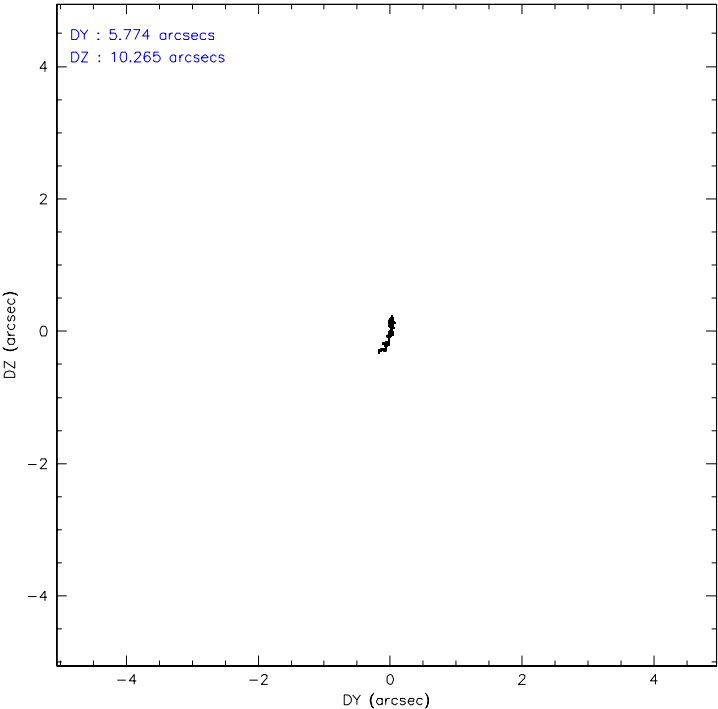
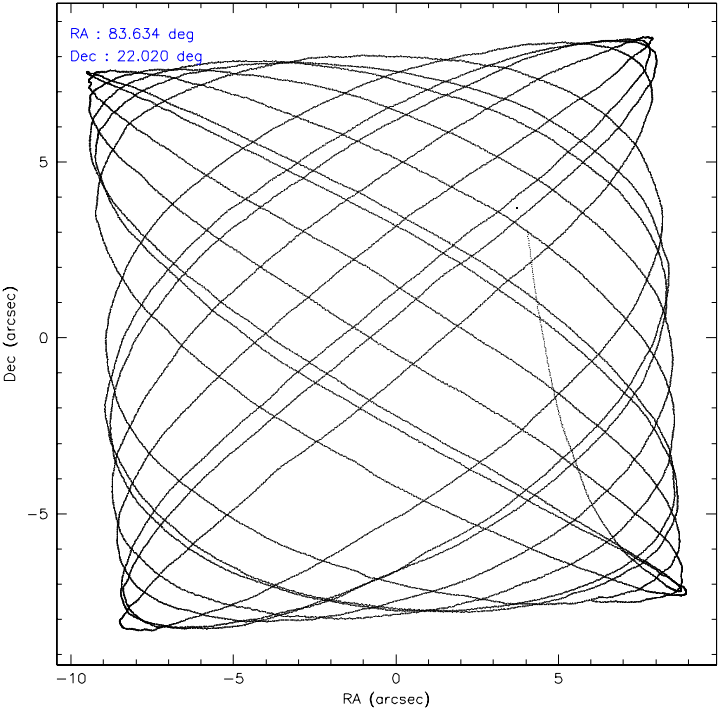
	ccd 7
level 1 events	2358029
rejected events	126352
rejected %	5%

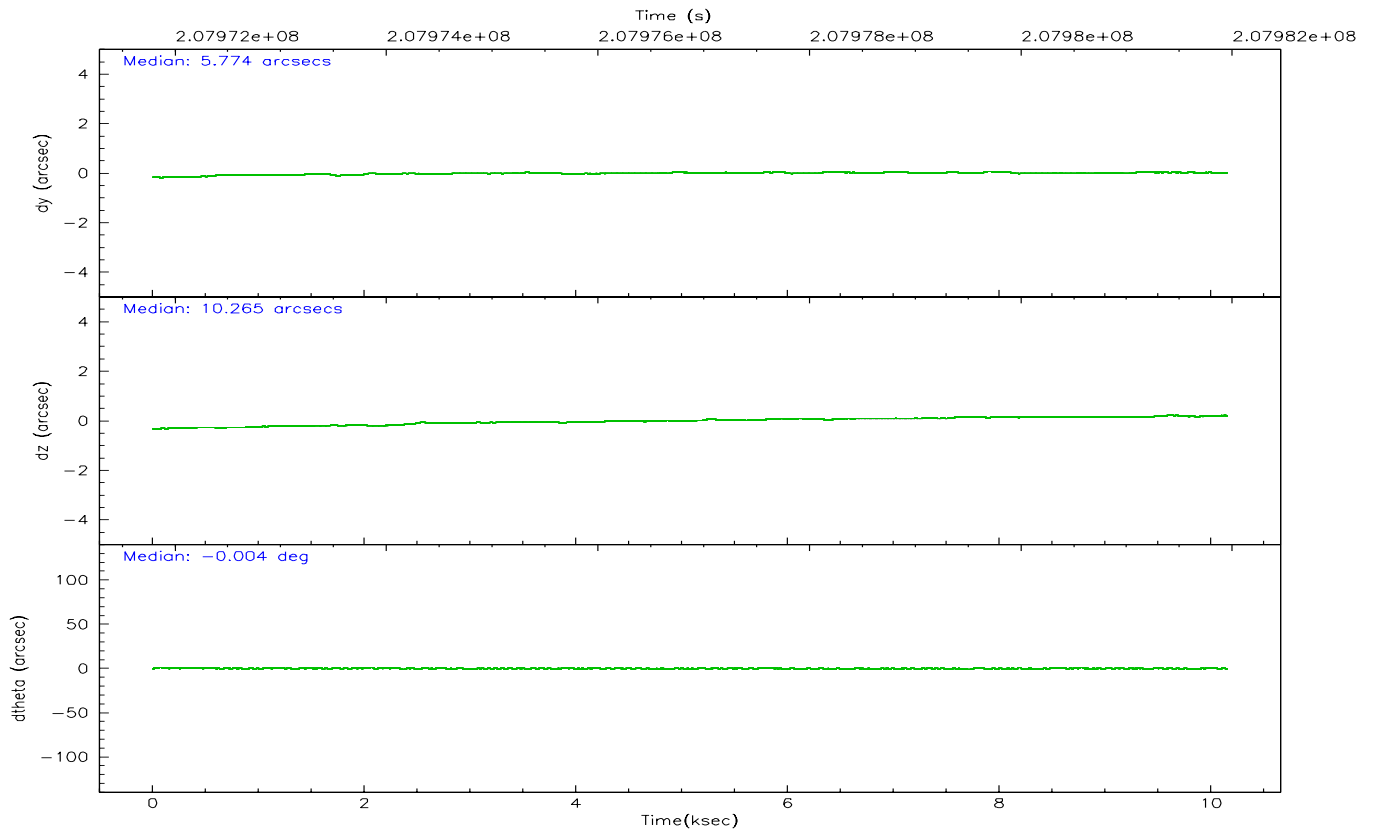
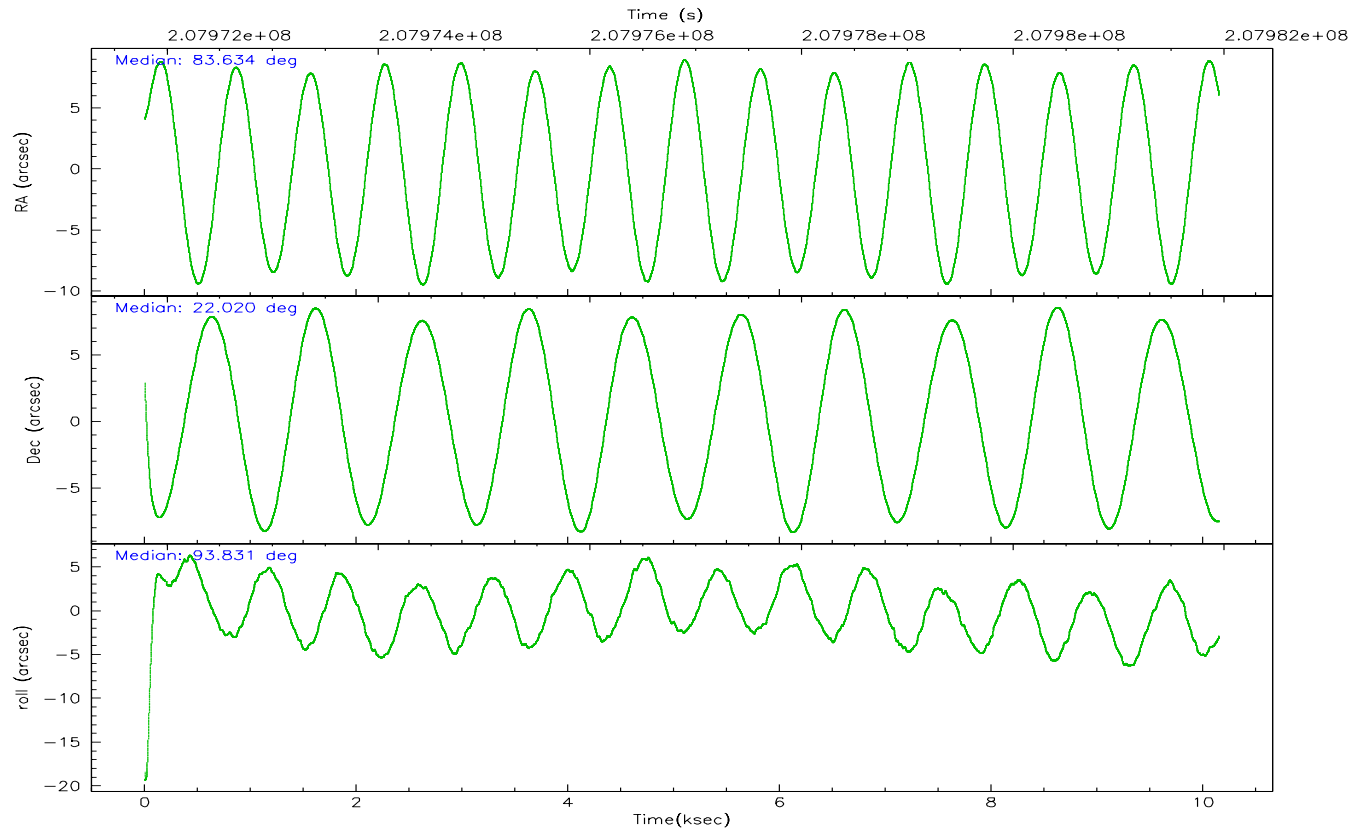
	ccd 7
grade 0 events	428755
	18%
grade 1 events	8377
	0%
grade 2 events	578177
	24%
grade 3 events	247536
	10%
grade 4 events	243525
	10%
grade 5 events	35593
	1%
grade 6 events	769796
	32%
grade 7 events	46270
	1%

2.2 Compared Parameters

Parameter	Planned	Actual	Parameter	Planned	Actual
Instrument	ACIS	ACIS	Obspar format version number	6	6
Detector	ACIS-7	ACIS-7	Obspar file type	PREDICTED	ACTUAL
Grating	HETG	HETG	Obspar update status	NONE	UPDATED
Data mode	GRADED	GRADED	On-chip summing requested	N	N
Observation mode	POINTING	POINTING	Subarray requested	CUSTOM	CUSTOM
Pointing RA	83.650289	83.63364778764853	Subarray start row	127	127
Pointing Dec	21.998183	22.02055770345216	Subarray row count	101	101
Pointing Roll	93.675064	93.83789536619743	Alternating exposures requested	N	N
SIM focus pos (mm)	-0.684267	-0.6828225247311905	Primary exposure time	0.000000	0.3
SIM defocus (mm)	0	0.001444936568705701			
SIM translation stage pos (mm)	-182.132523	-182.139514760308			
SIM translation stage offset (mm)	-8	-7.993007822699838			
Observation start time	207971947.184000	207970834.14465			
Observation start date	2004-08-04T01:58:03	2004-08-04T01:40:34			
Observation end time	207981947.184000	207982910.69519			
Observation end date	2004-08-04T04:44:43	2004-08-04T05:01:50			
Read mode	TIMED	TIMED			

2.3 Aspect



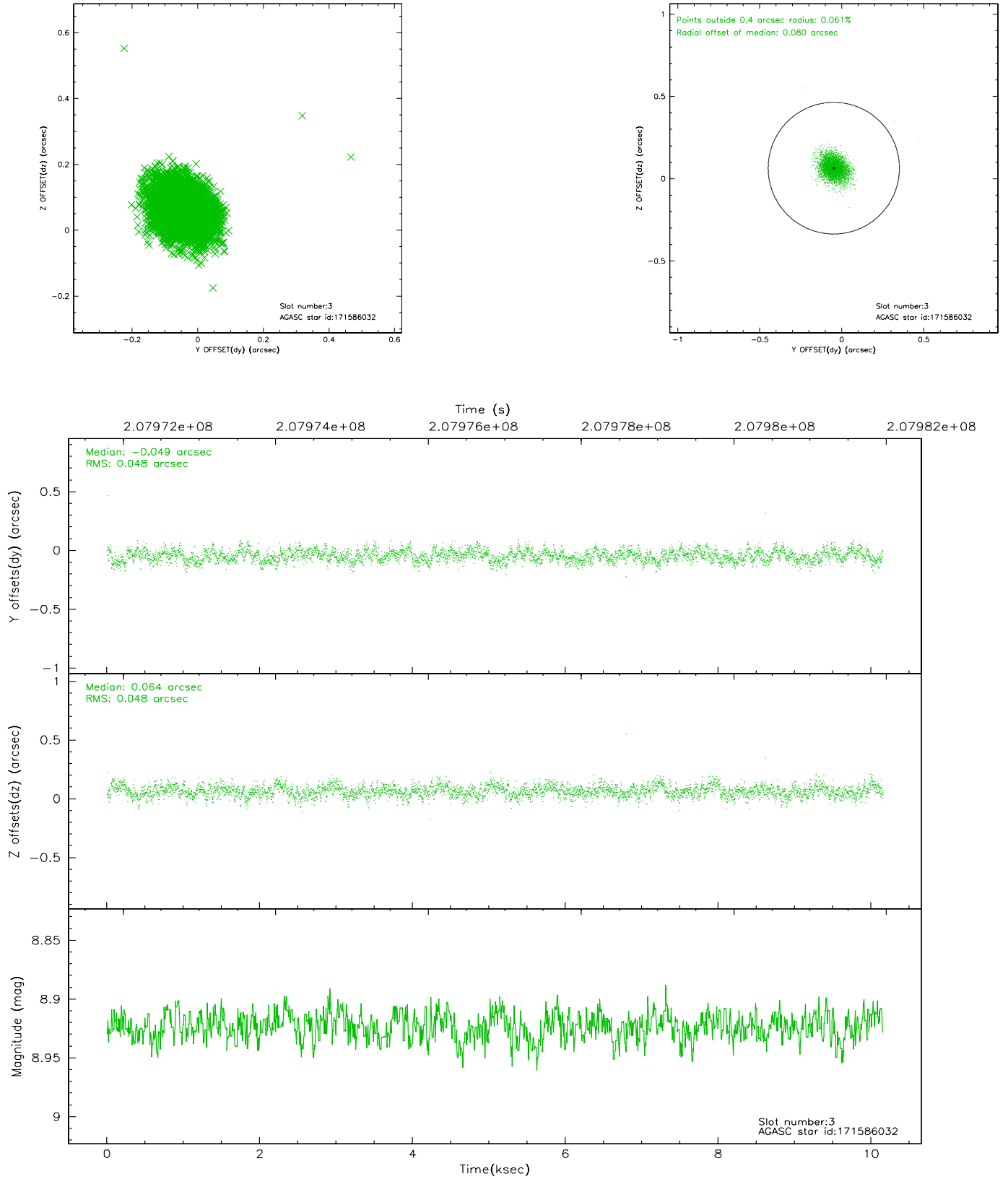


Slot Statistics

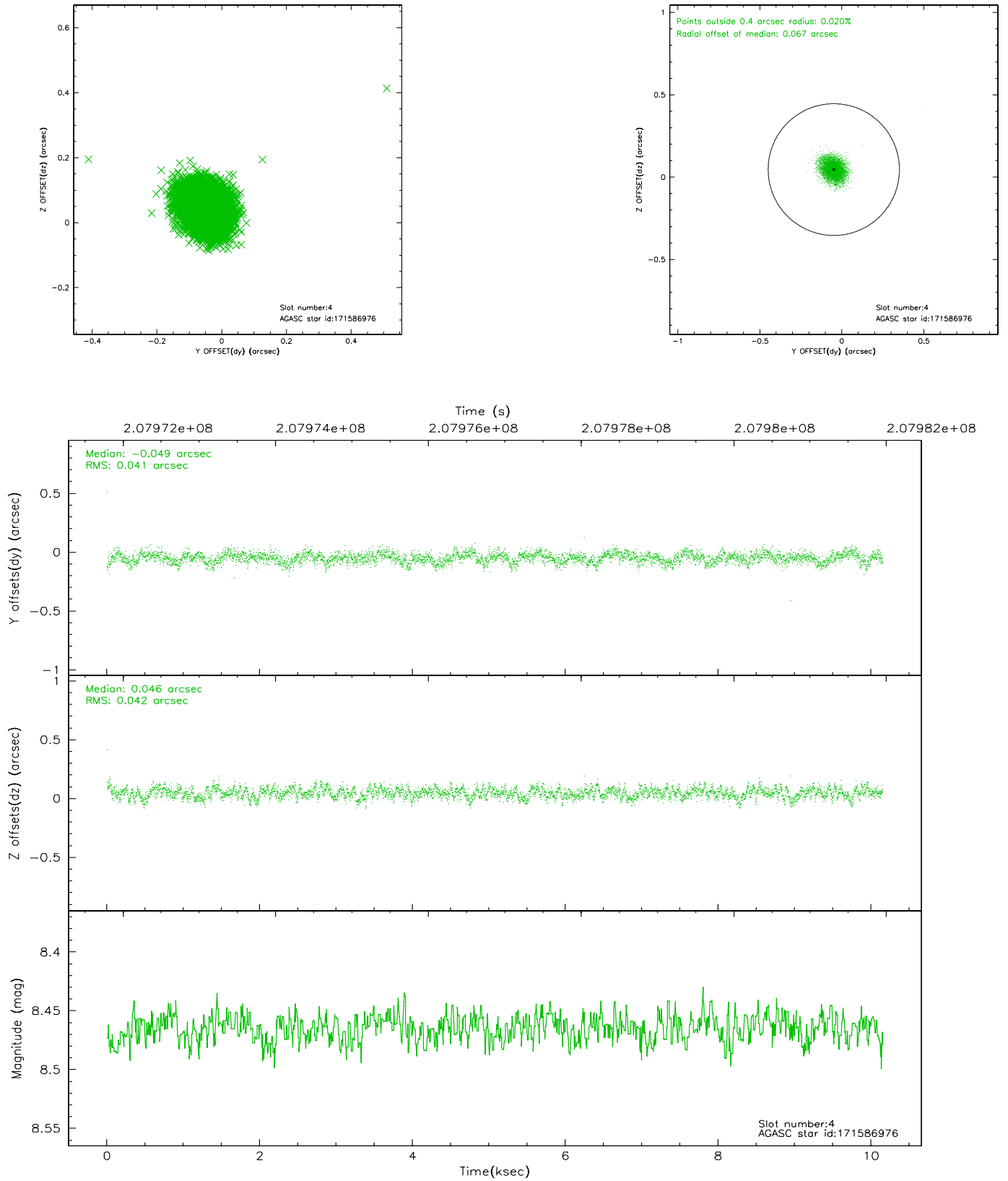
slot	status	id	mag	n_pts	med_dy	med_dz	dr1	dr2	ra	dec	mean_y	mean_z
0	FID	ACIS-S-2	7.09	2476	-0.082	-0.081	0.007	0.012	0.000000	0.000000	-757.97	-1896.26
1	FID	ACIS-S-4	7.18	2476	0.128	0.061	0.006	0.011	0.000000	0.000000	2155.26	11.77
2	FID	ACIS-S-5	7.23	2476	-0.077	0.027	0.007	0.012	0.000000	0.000000	-1810.15	5.97
3	GUIDE	171586032	8.92	4951	-0.049	0.064	0.071	0.116	83.950197	22.083225	242.88	-1017.70
4	GUIDE	171586976	8.46	4951	-0.049	0.046	0.062	0.099	83.857953	22.438065	1536.90	-790.93
5	GUIDE	171597832	9.15	4946	0.283	-0.230	0.093	0.149	83.183230	21.366702	-2165.13	1707.94
6	GUIDE	171721904	9.19	4950	-0.050	0.057	0.099	0.163	84.272676	22.116922	297.95	-2098.39
7	GUIDE	243941560	8.30	4950	-0.134	0.067	0.065	0.103	83.733264	22.568598	2032.00	-406.68

2.4 Star Slots

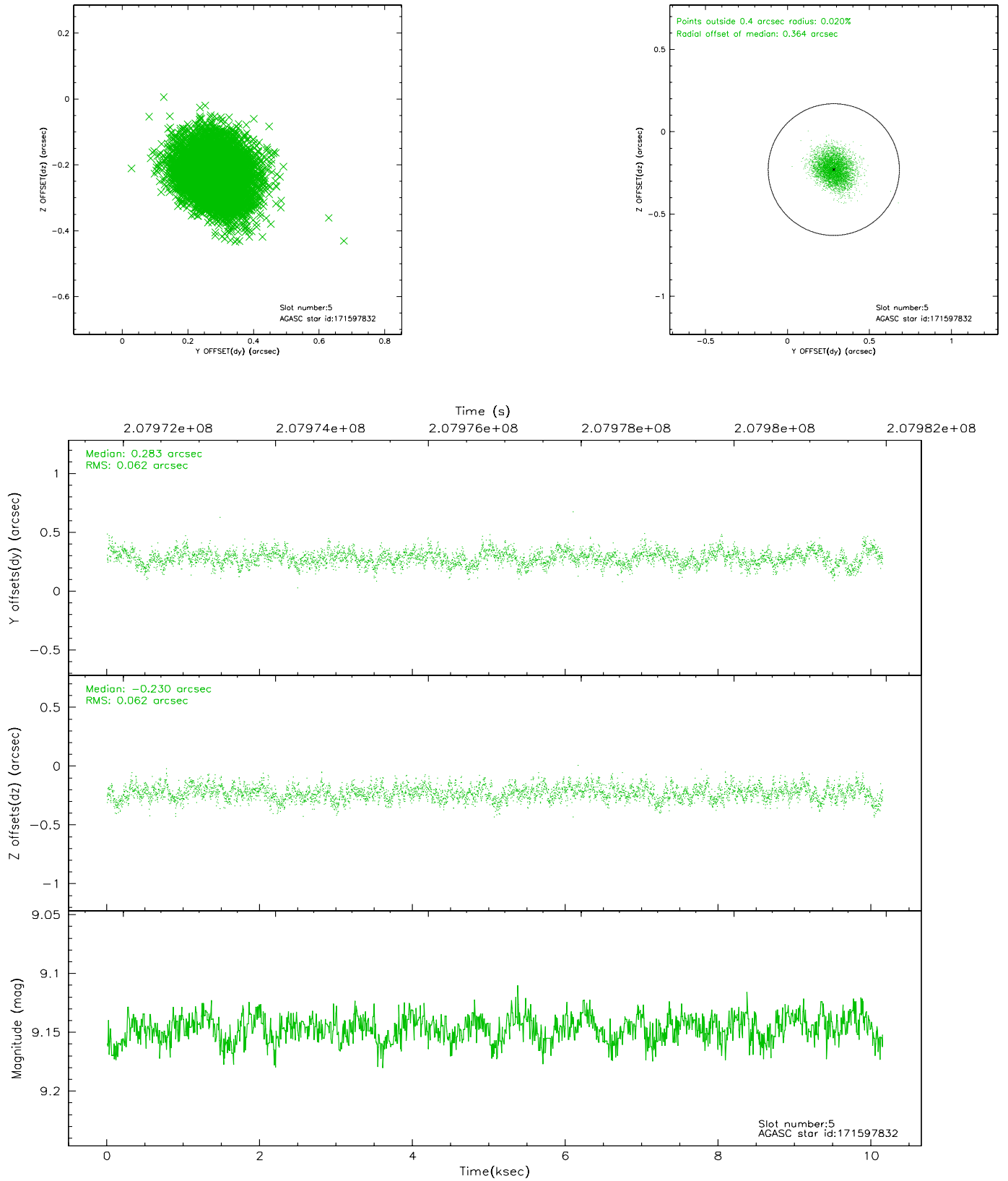
2.4.1 Slot 3



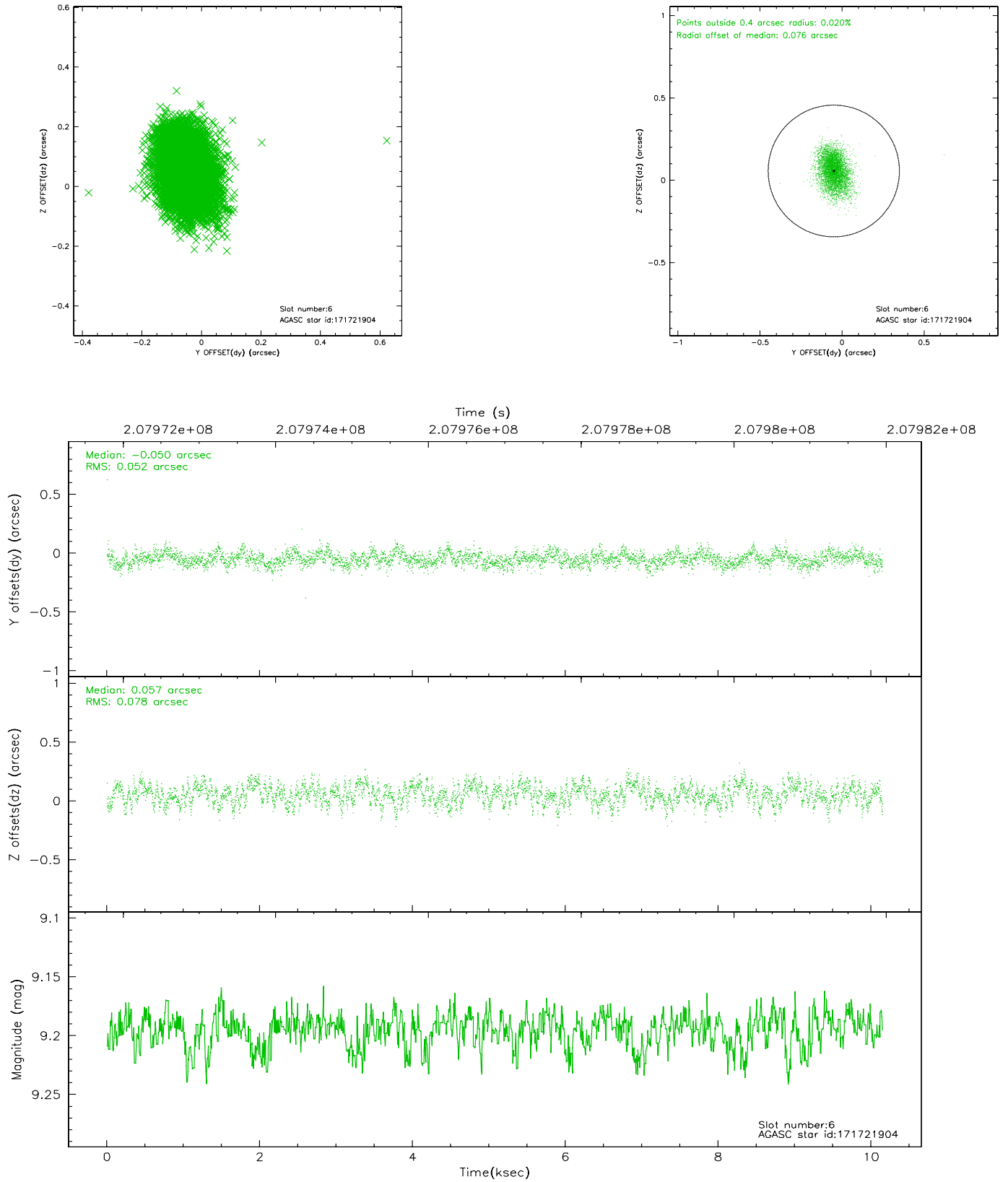
2.4.2 Slot 4



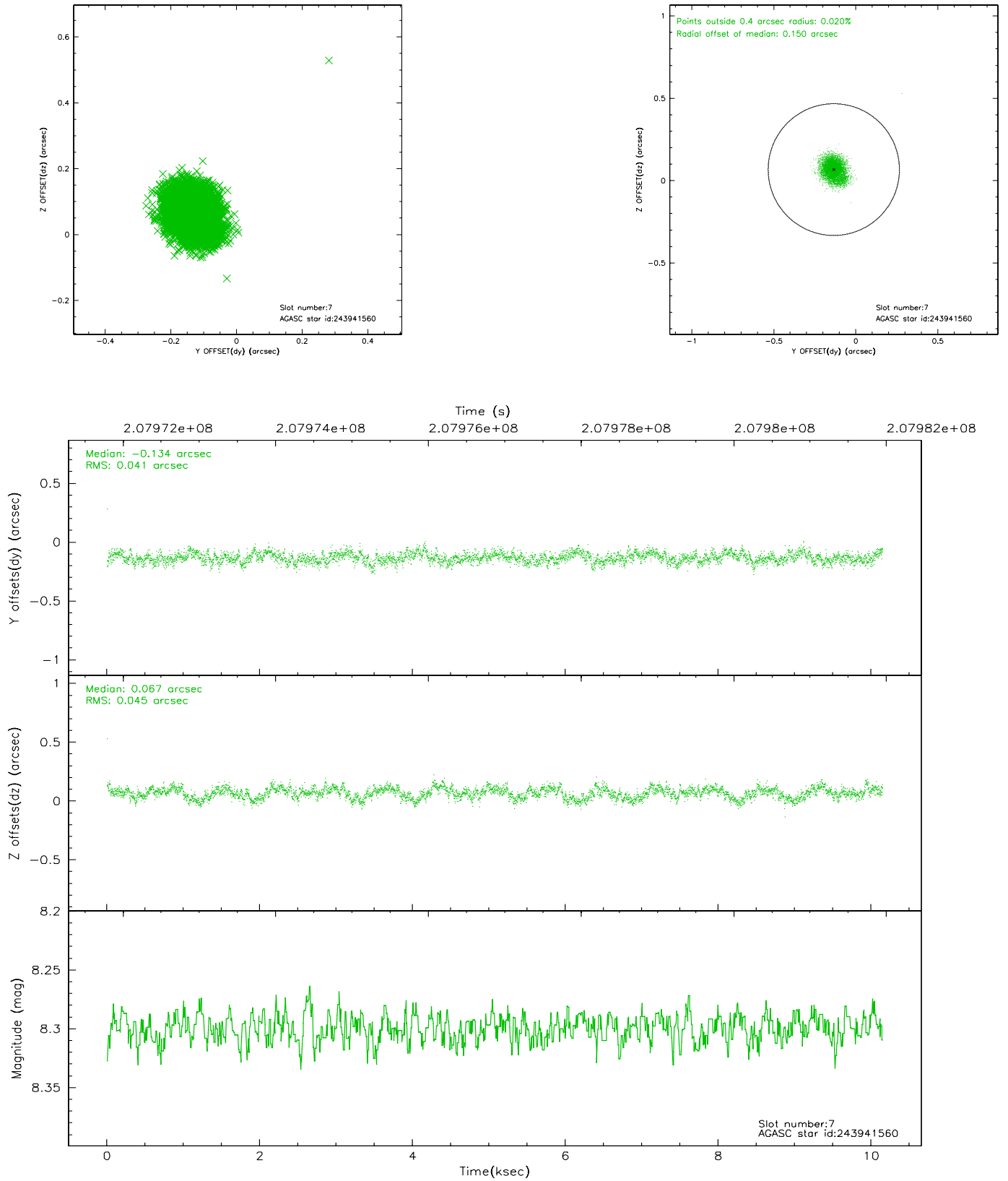
2.4.3 Slot 5



2.4.4 Slot 6

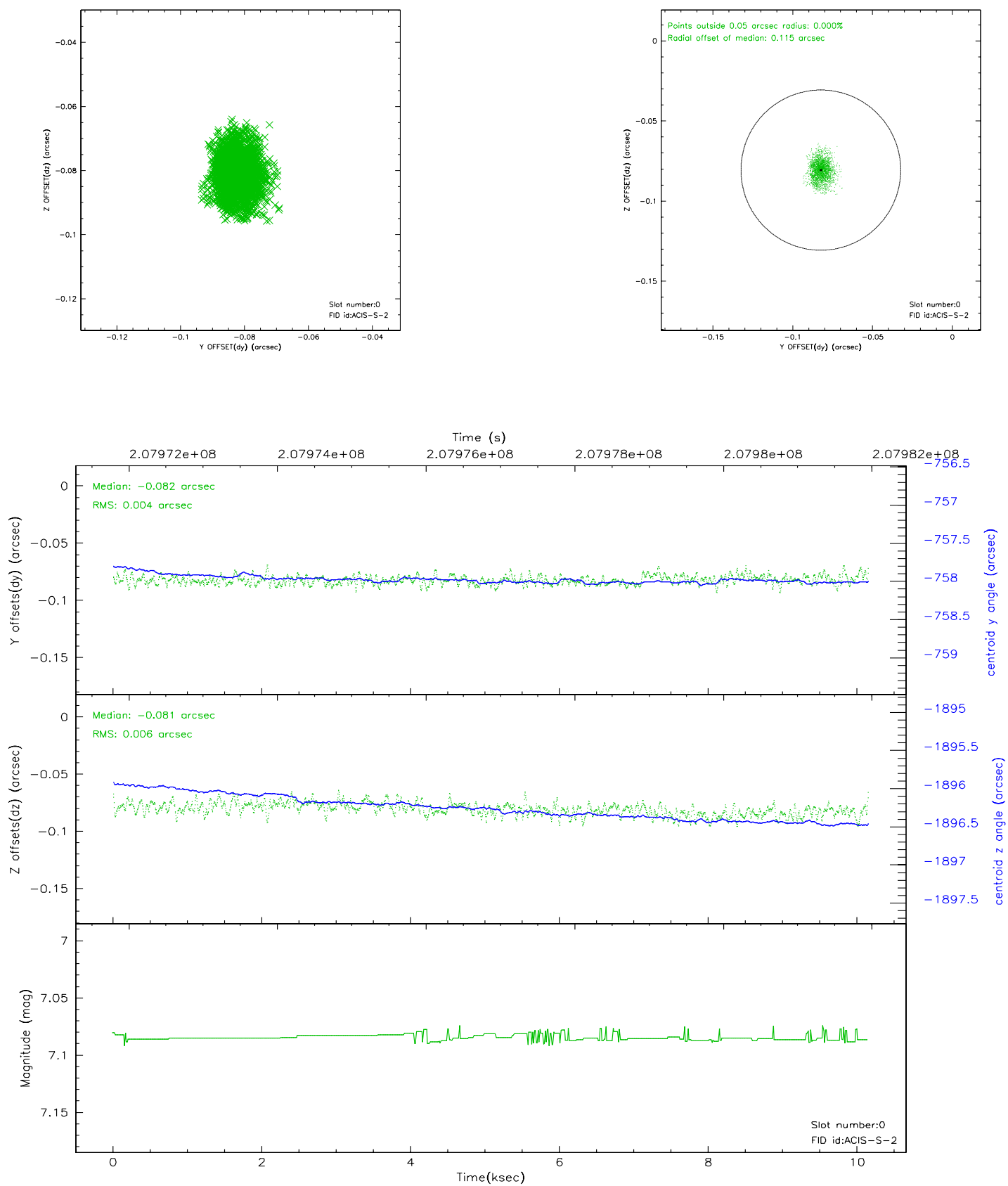


2.4.5 Slot 7

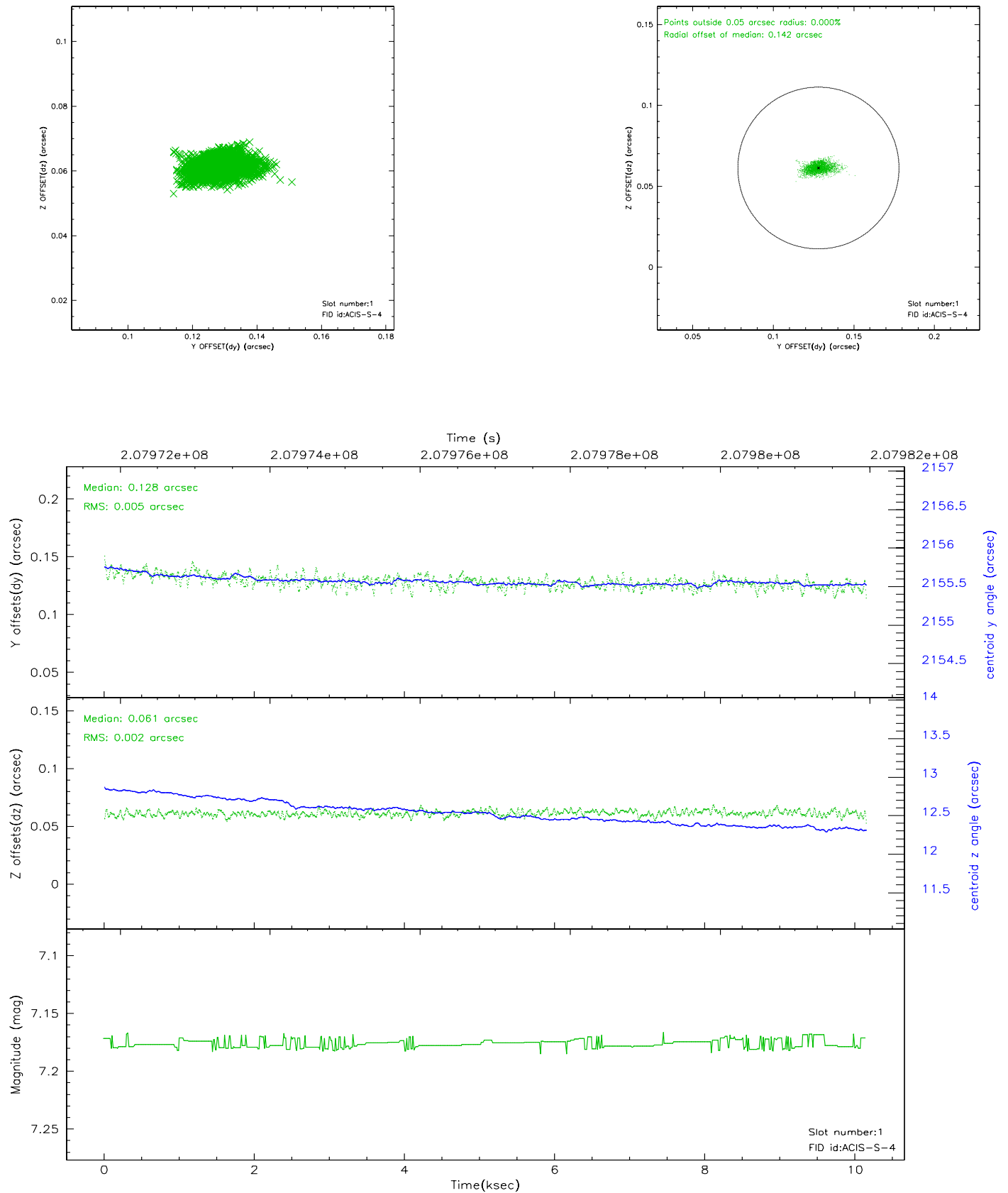


2.5 FID Slots

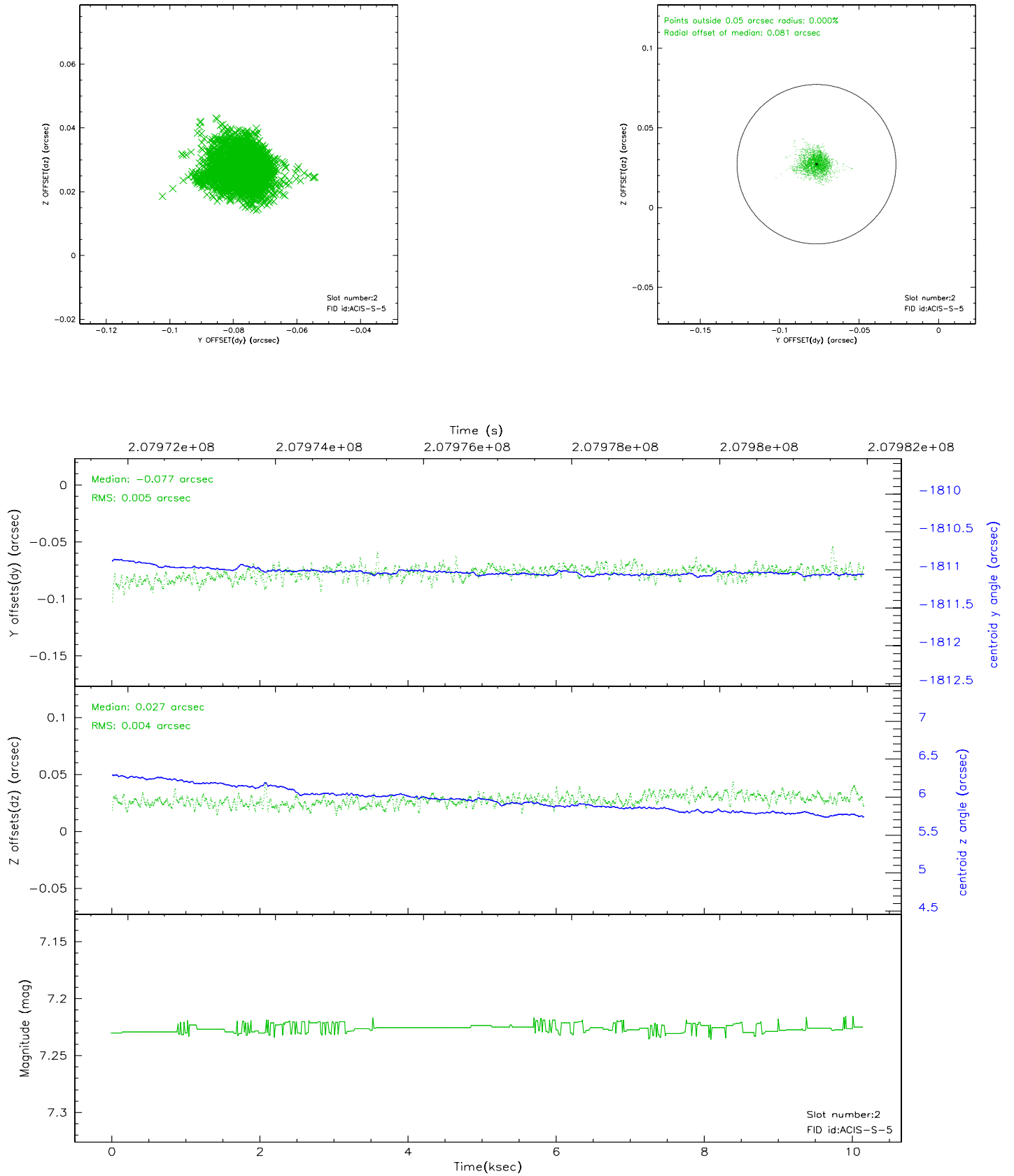
2.5.1 Slot 0



2.5.2 Slot 1



2.5.3 Slot 2

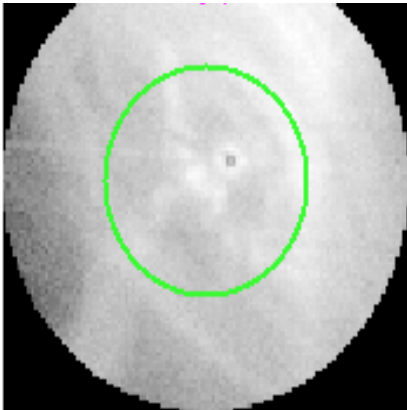


3 Gratings

3.1 HEG Arm



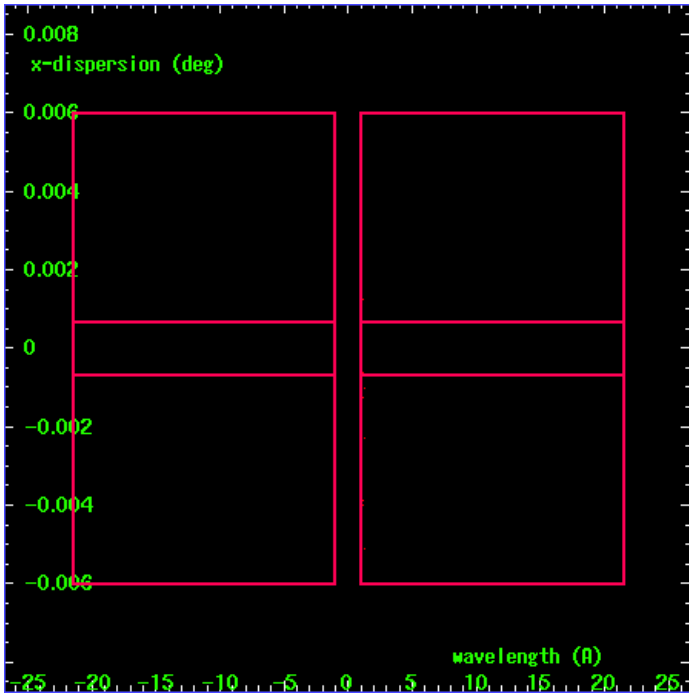
HEG Order Sort 123



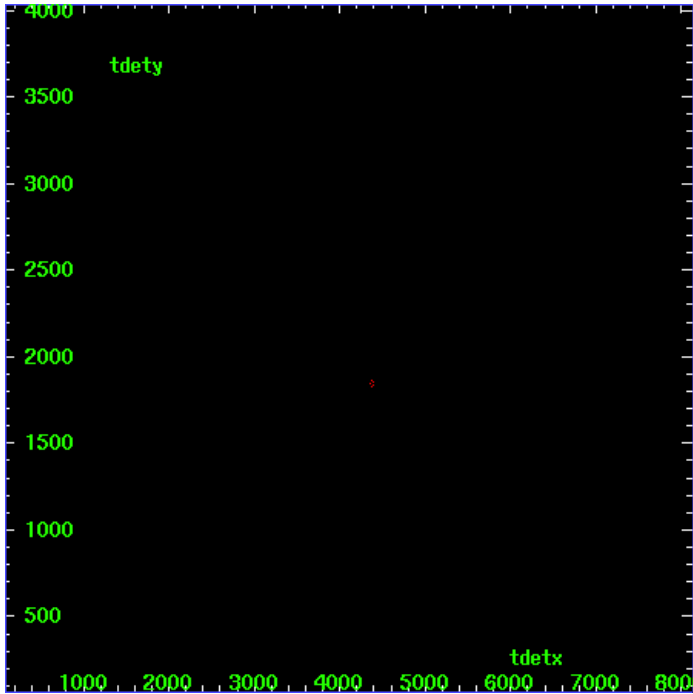
HEG Zero Order



HEG Order Sort ALL

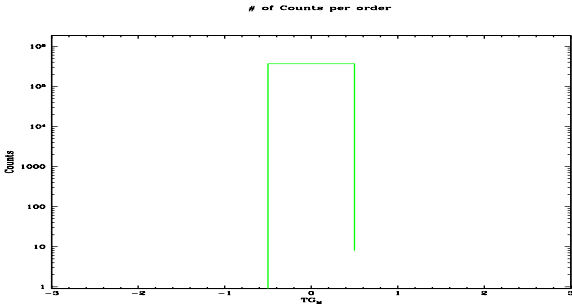


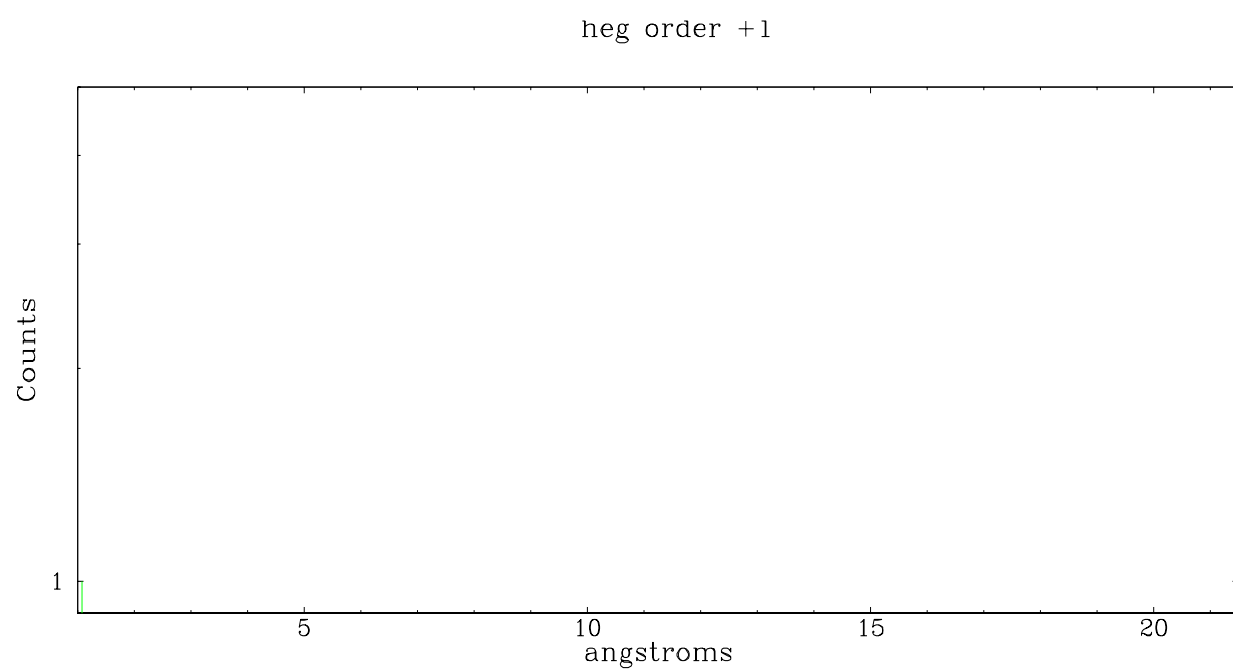
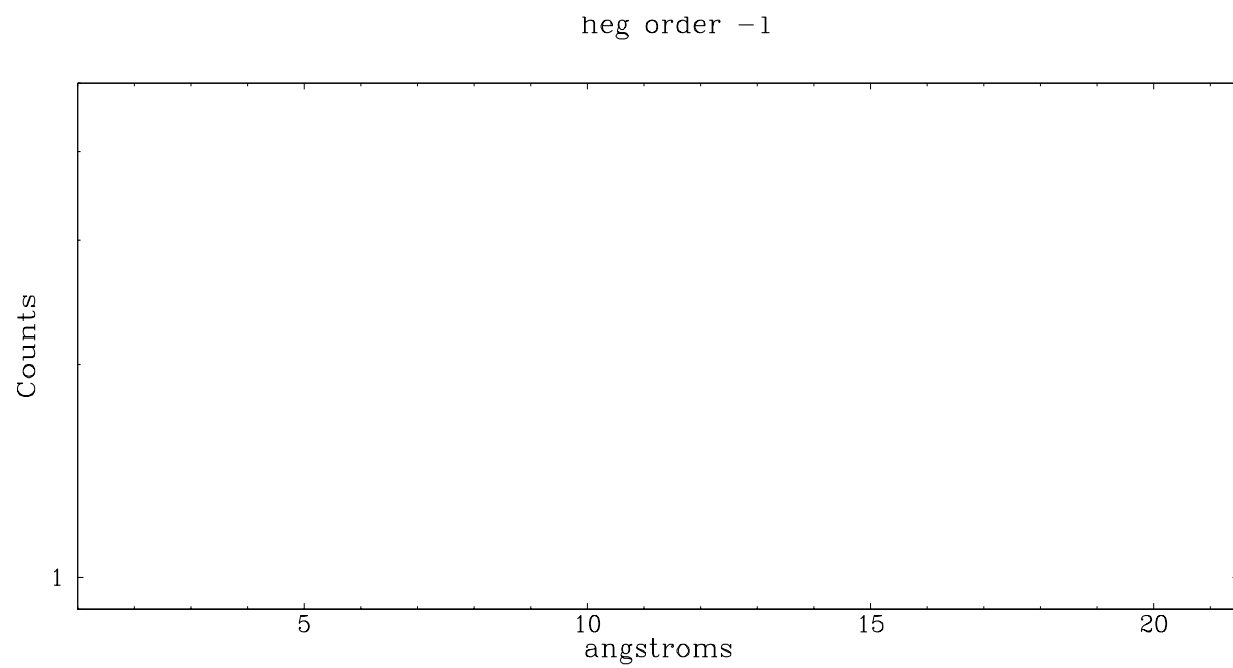
Spot Image HEG



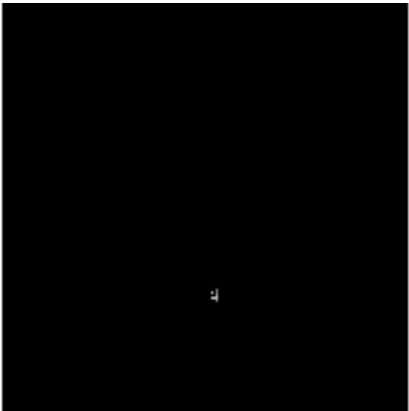
Full Detector HEG

	order -3	order -2	order -1	order 0	order 1	order 2	order 3
Events	0	0	0	3692158	0	0	0

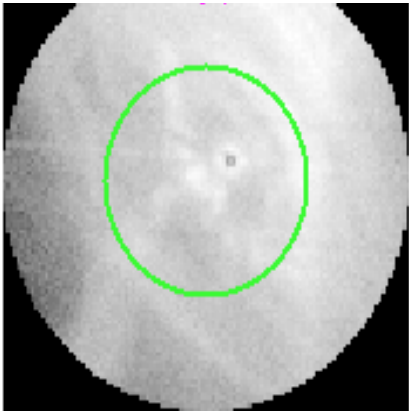




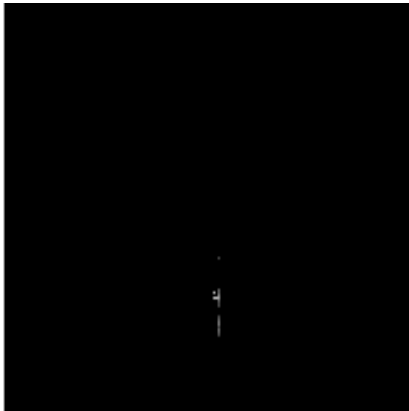
3.2 MEG Arm



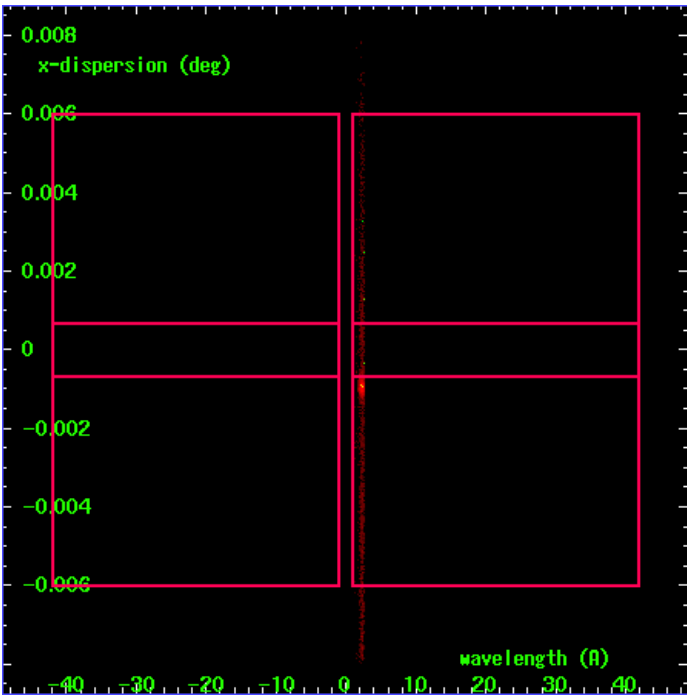
MEG Order Sort 123



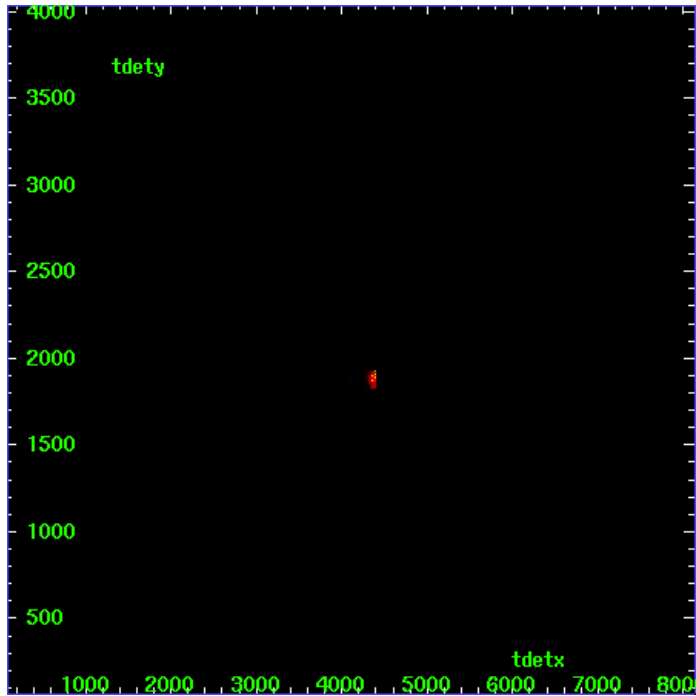
MEG Zero Order



MEG Order Sort ALL

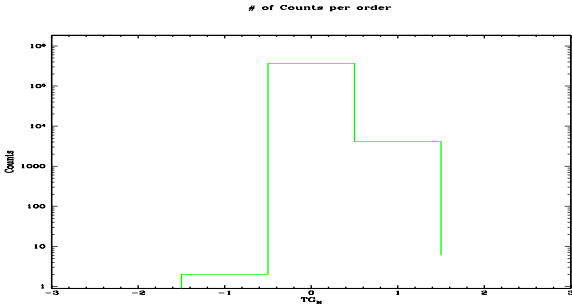


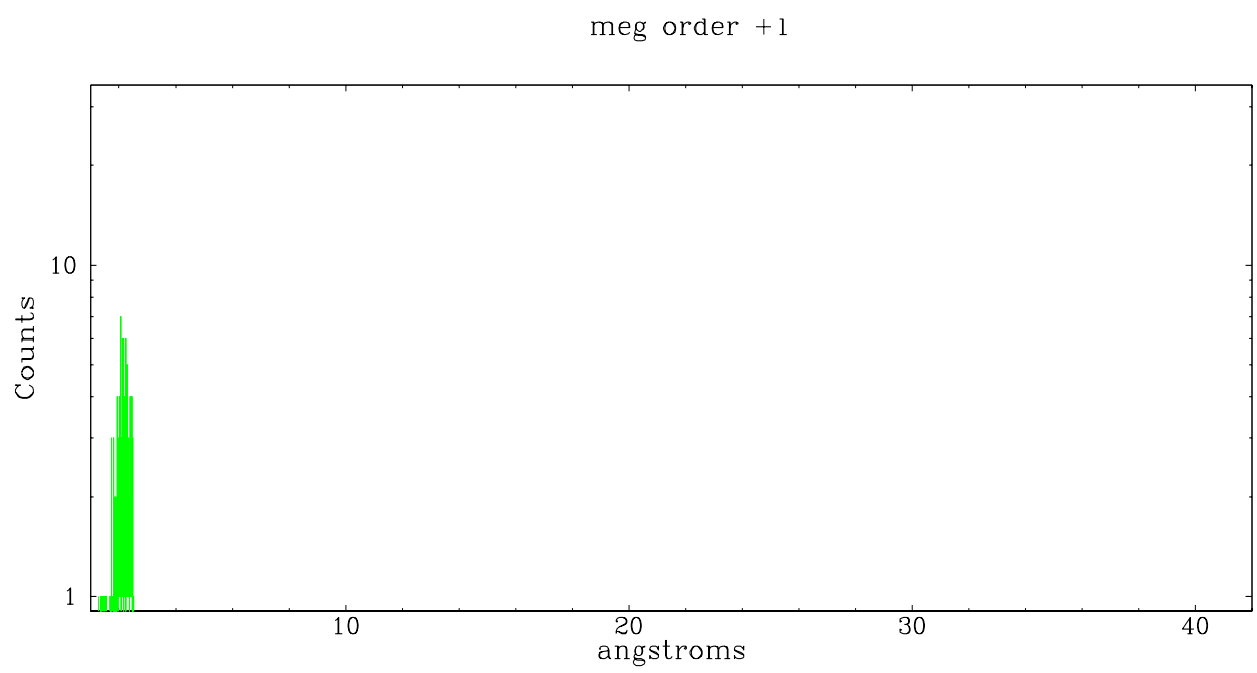
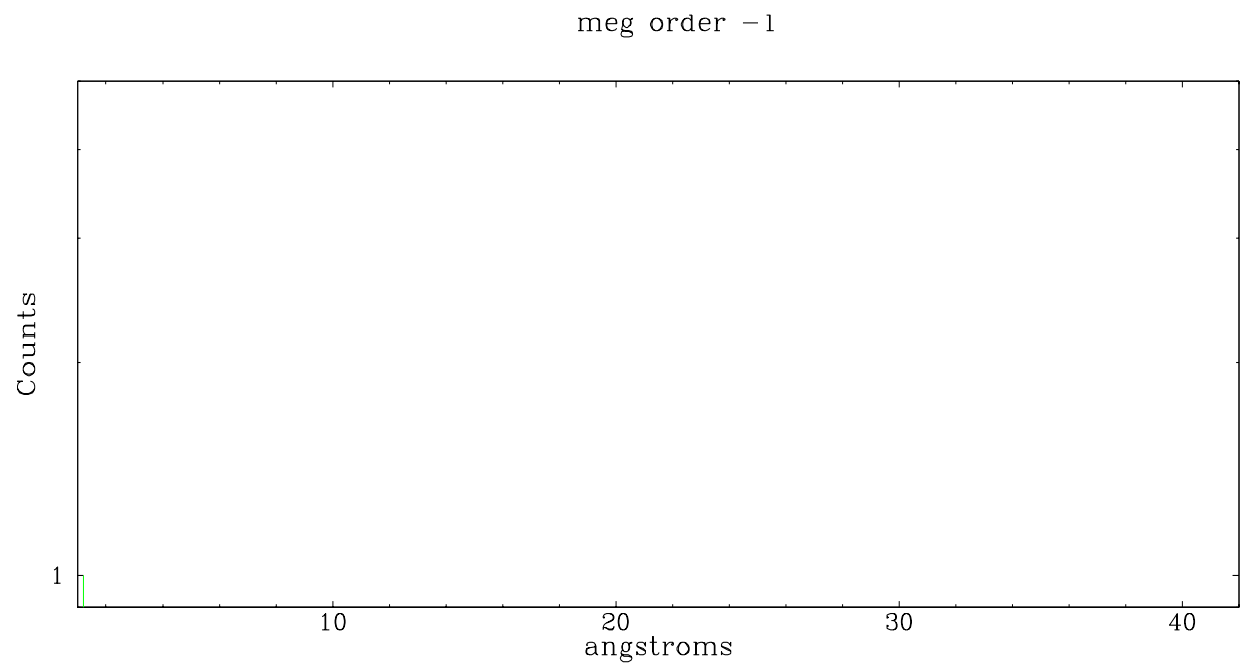
Spot Image MEG



Full Detector MEG

	order -3	order -2	order -1	order 0	order 1	order 2	order 3
Events	0	0	2	369215	4118	6	0





A Summary

A.1 Status

V&V Scientist	Jen Lauer
V&V Date (YYYY-MM-DD)	2006.04.26
V&V Edition	1
V&V Disposition and Status	OK
V&V Charge Time	10.15

A.2 Comments

HETG is inserted as filter, there is very little useful gratings information in the observation.